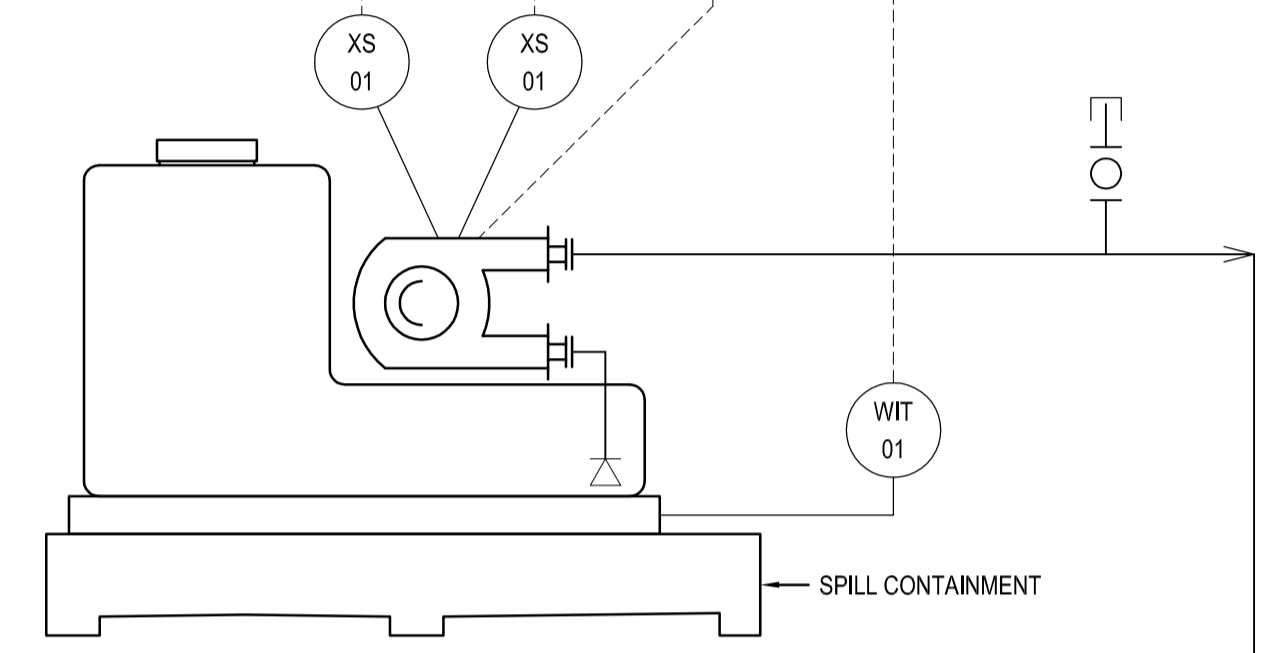
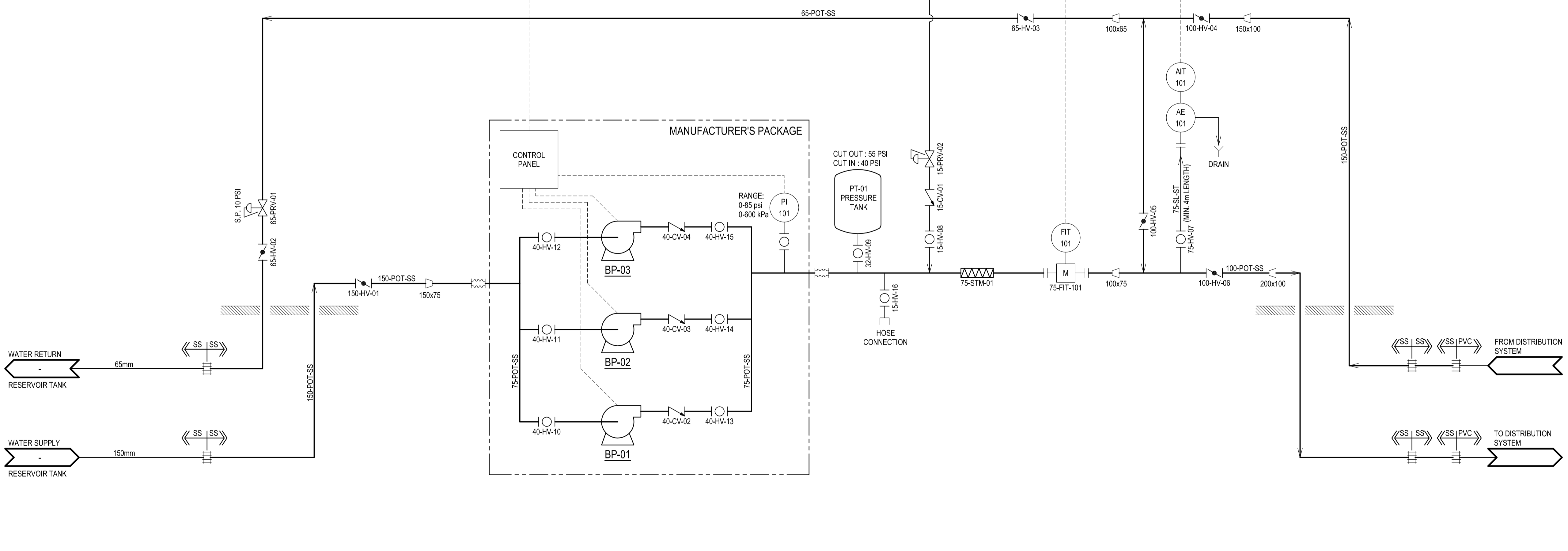


CS-01
SODIUM HYPOCHLORITE SYSTEM
 PUMP TYPE : PERISTALTIC
 TANK CAPACITY : 113.5L (50 gal)
 REAGENT : SODIUM HYPOCHLORITE
 CONCENTRATION : 6 %
 OPERATION : VARIABLE SPEED



- LEGENDS**
- BALL VALVE
 - BUTTERFLY VALVE
 - CHECK VALVE
 - SOLENOID VALVE
 - PRESSURE REDUCING VALVE
 - FLEXIBLE CONNECTOR
 - MAGNETIC FLOW METER
 - RESTRAINED COUPLING
 - STATIC IN-LINE MIXER



BP-01, BP-02 & BP-03
BOOSTER PUMPS
 OPERATION : VARIABLE SPEED PUMP
 No. OF PUMPS : 3 (2 DUTY, 1 STANDBY)
 CAPACITY : 4.25 L/s @ 37m
 POWER : 3 HP (EACH)
 VOLTAGE/PHASE/Hz : 230V/1PH/60Hz



ISL Engineering and Land Services
 SUITE 301, 20338 - 65 AVENUE
 LANGLEY, BRITISH COLUMBIA, V2Y 2X3
 [604] 530-2288 FAX : [604] 530-1132

6		
5		
4		
3		
2	ISSUED FOR TENDER	13/10/04
1	ISSUED FOR 100% DESIGN	12/05/18
Revision/Revisão	Description/Description	Date/Date

Client/Client
PUBLIC WORKS & GOVERNMENT SERVICES CANADA (PWGSC)

Project Title/Titre du projet
PACIFIC RIM NATIONAL PARK TOPINO, BC

WATER & SANITARY SERVICES - PHASE 2

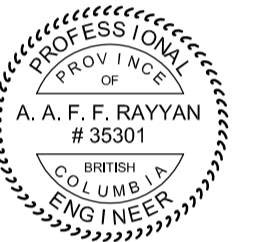
Consultant Signature Only
A. RAYYAN
 Designed by/Concept par
A. RAYYAN
 Drawn by/Dessiné par
M. LANDICHO
 PWGSC Project Manager/Administrateur de Projets TPSGC
T. DUNPHY
 Regional Manager, Architectural and Engineering Services,
 Gestionnaire régional, Services d'architecture et de génie, TPSGC
REGIONAL MANAGER AES

Drawing Title/Titre du dessin
RCO BOOSTER STATION PIPING AND INSTRUMENTATION DIAGRAM

Project No./No. du projet	Sheet/Feuille	Revision no./La Révision no.
R.023478.001	39 OF 85	2

j:\30000\30500\30589_Pacific_Rim_National_Park_System\02_CADD\20_Drafting\205_Mechanical\02-RCO_Booster_Station\R.023478.001-702.dwg





6		
5		
4		
3		
2	ISSUED FOR TENDER	13/10/04
1	90% DESIGN SUBMISSION	11/08/25

Revision/Revisions Description/Description Date/Date

Client/client
PUBLIC WORKS & GOVERNMENT SERVICES CANADA (PWGSC)

Project title/Titre du projet
PACIFIC RIM NATIONAL PARK TOFINO, BC

WATER & SANITARY SERVICES - PHASE 2

Consultant Signature Only
A. RAYYAN

Designed by/Concept par
A. RAYYAN

Drawn by/Dessiné par
M. LANDICHO

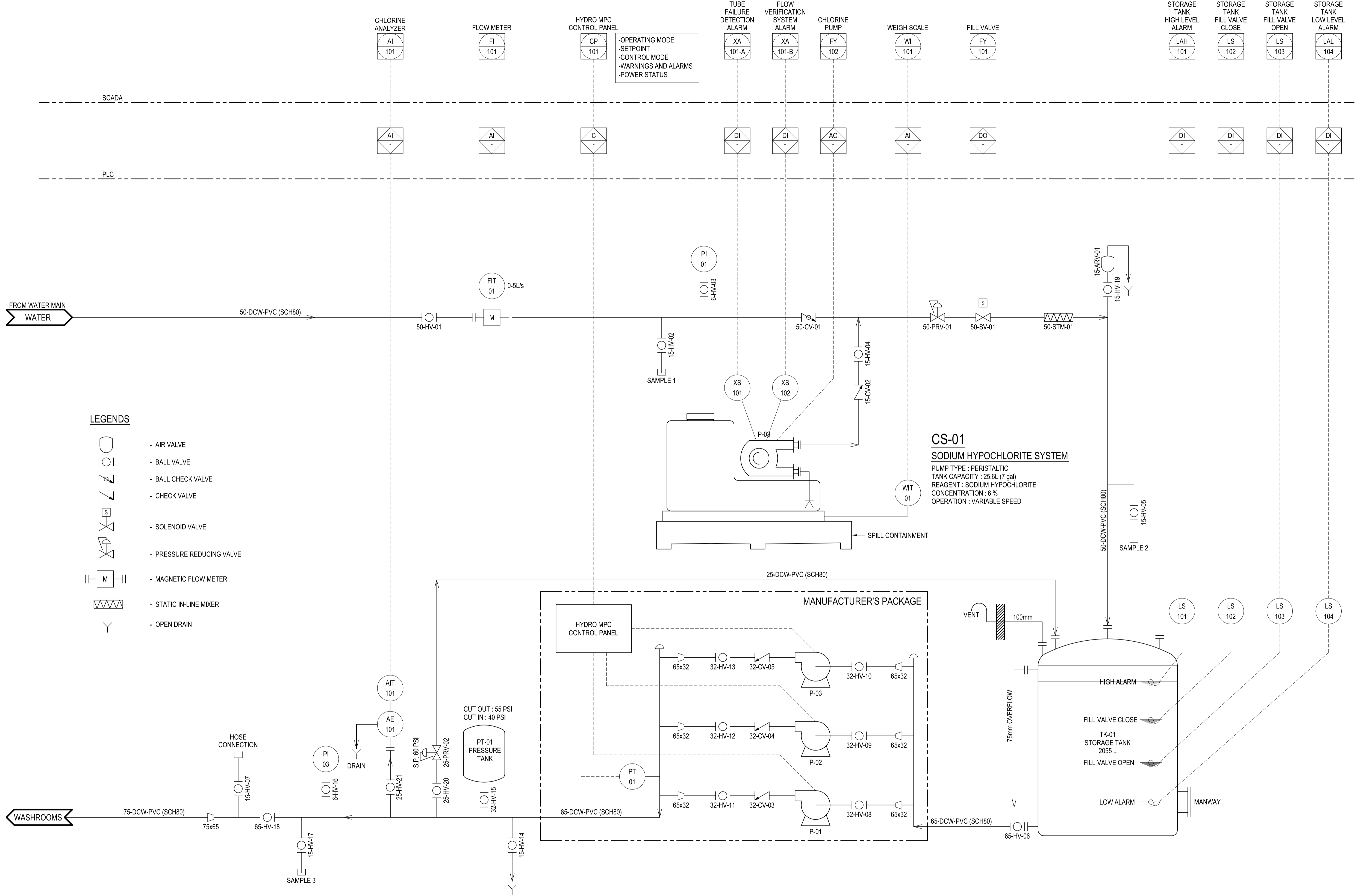
PWGSC Project Manager/Administrateur de Projets TPSGC
T. DUNPHY

Regional Manager, Architectural and Engineering Services
Gestionnaire régional, Services d'architecture et de génie, TPSGC
REGIONAL MANAGER/AES

Drawing title/Titre du dessin

**LONG BEACH BOOSTER STATION
PIPING AND INSTRUMENTATION
DIAGRAM**

Project No./No. du projet R.023478.001	Sheet/Feuille 45 OF 85	Revision no./ La Révision no. 2
--	-------------------------------------	--



- LEGENDS**
- AIR VALVE
 - BALL VALVE
 - BALL CHECK VALVE
 - CHECK VALVE
 - SOLENOID VALVE
 - PRESSURE REDUCING VALVE
 - MAGNETIC FLOW METER
 - STATIC IN-LINE MIXER
 - OPEN DRAIN

P-01, P-02 & P-03
BOOSTER PUMPS
PUMP TYPE : INLINE PUMP
No. OF PUMPS: 3 (2 DUTY / 1 STANDBY)
OPERATION : VARIABLE SPEED
FLOW : 2.25 L/s @ 39m (EACH)
POWER : 2 HP (EACH)
VOLTAGE : 230V / 1PH / 60Hz

CS-01
SODIUM HYPOCHLORITE SYSTEM
PUMP TYPE : PERISTALTIC
TANK CAPACITY : 25.6L (7 gal)
REAGENT : SODIUM HYPOCHLORITE
CONCENTRATION : 6 %
OPERATION : VARIABLE SPEED

j:\30000\30500\Pacific_Rim_National_Park_System\02_CADD\20_Drafting\205_Mechanical\02-2_Long_Beach_Booster_Station\R.023478.001-708.dwg



LEGEND

- AIR VALVE
- BALL VALVE
- BALL CHECK VALVE
- CHECK VALVE
- SOLENOID VALVE
- MOTORIZED VALVE
- PRESSURE SUSTAINING VALVE
- MAGNETIC FLOW METER
- STATIC IN-LINE MIXER
- OPEN DRAIN
- BORE HOLE PUMP
- PRESSURE LEVEL TRANSMITTER

ISL Engineering and Land Services
SUITE 301, 20338 - 65 AVENUE
LANGLEY, BRITISH COLUMBIA, V2Y 2K3
[604] 530-2288 FAX: [604] 530-1132

6		
5		
4		
3		
2	ISSUED FOR TENDER	15/08/14
1	ISSUED FOR 90% REVIEW	15/07/15
Revision/Revision	Description/Description	Date/Date

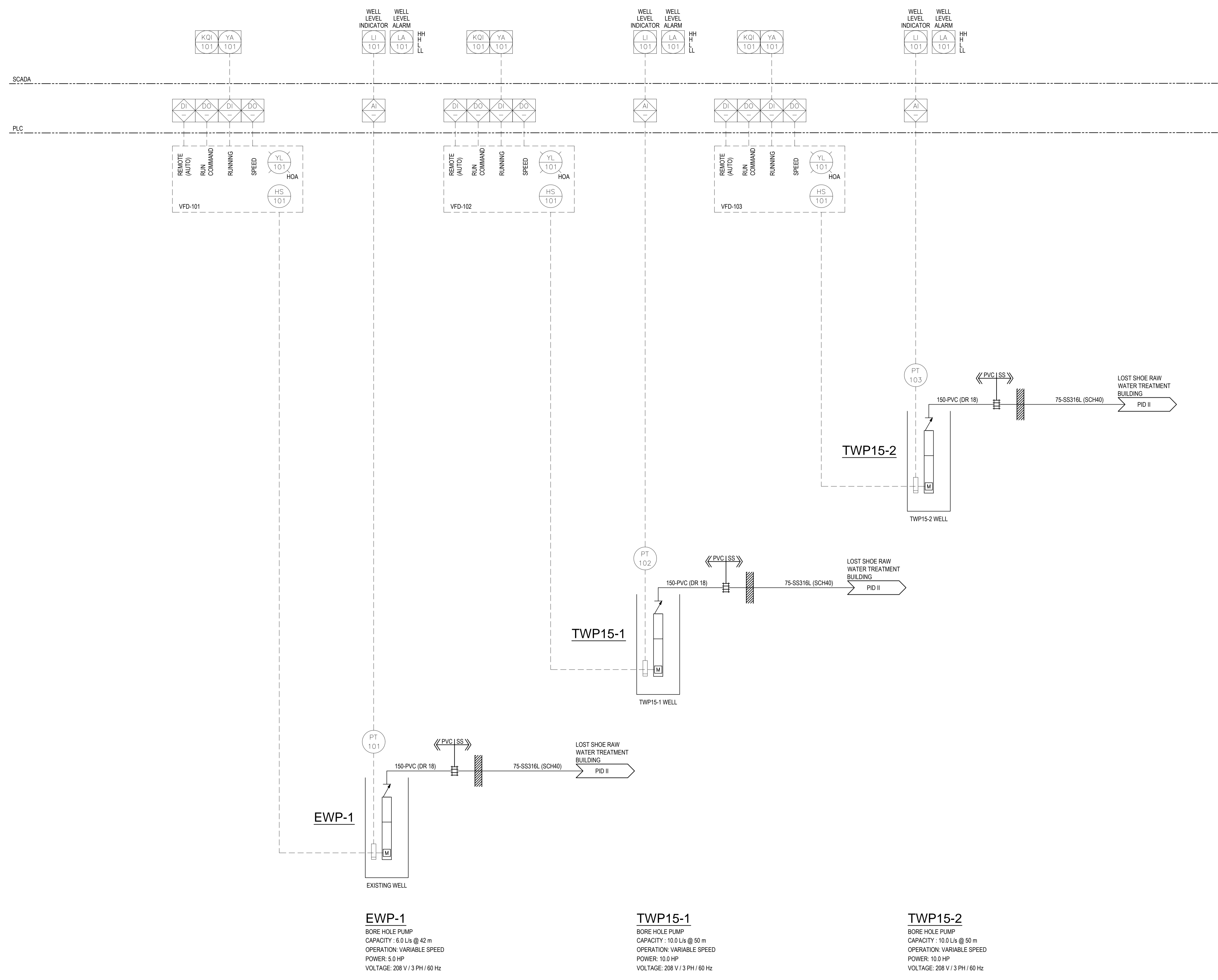
Client/client
PUBLIC WORKS & GOVERNMENT SERVICES CANADA (PWGSC)

Project title/Titre du projet
PACIFIC RIM NATIONAL PARK TOFINO, BC
LOST SHOE CREEK WATER SUPPLY PROJECT

Consultant Signature Only
A. RAYYAN
Designed by/Concept par
A. RAYYAN
Drawn by/Dessiné par
A. LI
PWGSC Project Manager/Administrateur de Projets TPSGC
T. DUNPHY
Regional Manager, Architectural and Engineering Services
Gestionnaire régionale, Services d'architectural et de génie, TPSGC
REGIONAL MANAGER AES

Drawing title/Titre du dessin
LOST SHOE TREATMENT BUILDING PROCESS & INSTRUMENTATION DIAGRAM I

Project No./No. du projet	Sheet/Fauille	Revision no./La Révision no.
R.023478-001	62 OF 86	2



T:\Projects\31000\31283 Pacific Rim Water Domestic Water System\02_CADD\PID\31283_PID01.dwg

DWG. NO.
R.023478.001-720

LEGEND

- AIR VALVE
- BALL VALVE
- BALL CHECK VALVE
- CHECK VALVE
- SOLENOID VALVE
- MOTORIZED VALVE
- PRESSURE SUSTAINING VALVE
- MAGNETIC FLOW METER
- STATIC IN-LINE MIXER
- OPEN DRAIN
- PRESSURE RELIEF VALVE
- PULSATION DAMPER
- PRESSURE GAUGE
- CALIBRATION COLUMN

ISL Engineering and Land Services
SUITE 301, 20338 - 65 AVENUE
LANGLEY, BRITISH COLUMBIA, V2Y 2X3
[604] 530-2288 FAX : [604] 530-1132

6		
5		
4		
3		
2	ISSUED FOR TENDER	15/08/14
1	ISSUED FOR 90% REVIEW	15/07/15
Revision/	Description/Description	Date/Date

Client/client
PUBLIC WORKS & GOVERNMENT SERVICES CANADA (PWGSC)

Project title/Titre du projet
PACIFIC RIM NATIONAL PARK TOPINO, BC

LOST SHOE CREEK WATER SUPPLY PROJECT

Consultant Signature Only
A. RAYYAN

Designed by/Concept par
A. RAYYAN

Drawn by/Designe par
A. LI

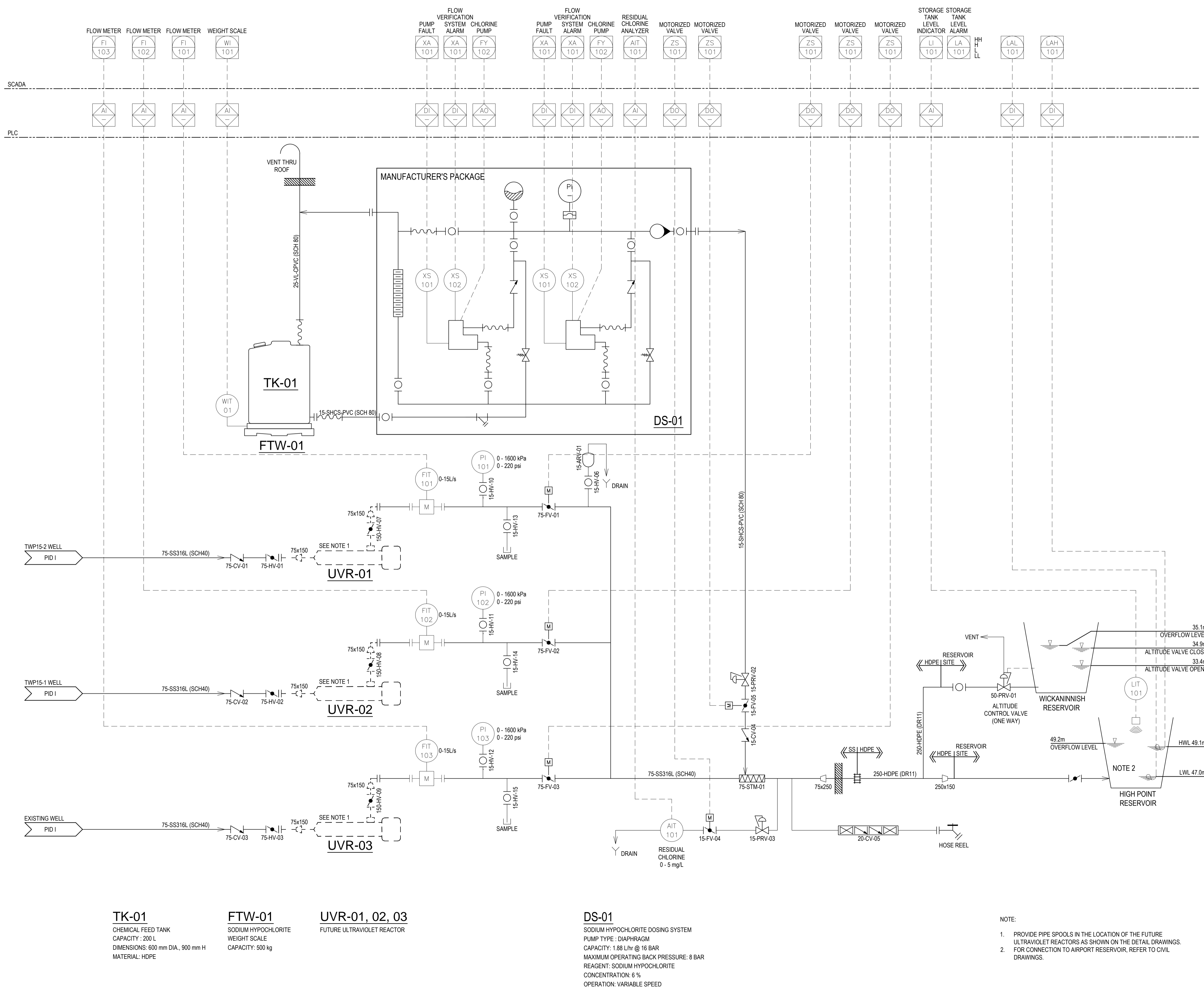
PWGSC Project Manager/Administrateur de Projets TPSGC
T. DUNPHY

Regional Manager, Architectural and Engineering Services
Gestionnaire régional, Services d'architectural et de génie, TPSGC
REGIONAL MANAGER AES

Drawing title/Titre du dessin

LOST SHOE TREATMENT BUILDING PROCESS & INSTRUMENTATION DIAGRAM II

Project No./No. du projet	Sheet/Feuille	Revision no./La Révision no.
R.023478-001	63 OF 86	2



- TK-01**
CHEMICAL FEED TANK
CAPACITY: 200 L
DIMENSIONS: 600 mm DIA., 900 mm H
MATERIAL: HDPE
- FTW-01**
SODIUM HYPOCHLORITE WEIGHT SCALE
CAPACITY: 500 kg
- UVR-01, 02, 03**
FUTURE ULTRAVIOLET REACTOR

- DS-01**
SODIUM HYPOCHLORITE DOSING SYSTEM
PUMP TYPE: DIAPHRAGM
CAPACITY: 1.88 L/hr @ 16 BAR
MAXIMUM OPERATING BACK PRESSURE: 8 BAR
REAGENT: SODIUM HYPOCHLORITE
CONCENTRATION: 6%
OPERATION: VARIABLE SPEED

- NOTE:
- PROVIDE PIPE SPOOLS IN THE LOCATION OF THE FUTURE ULTRAVIOLET REACTORS AS SHOWN ON THE DETAIL DRAWINGS.
 - FOR CONNECTION TO AIRPORT RESERVOIR, REFER TO CIVIL DRAWINGS.

T:\Projects\31000_31283_Pacific Rim Water Domestic Water System_02_CADD\PID\31283_PID01.dwg

DWG. NO.
R.023478.001-721

