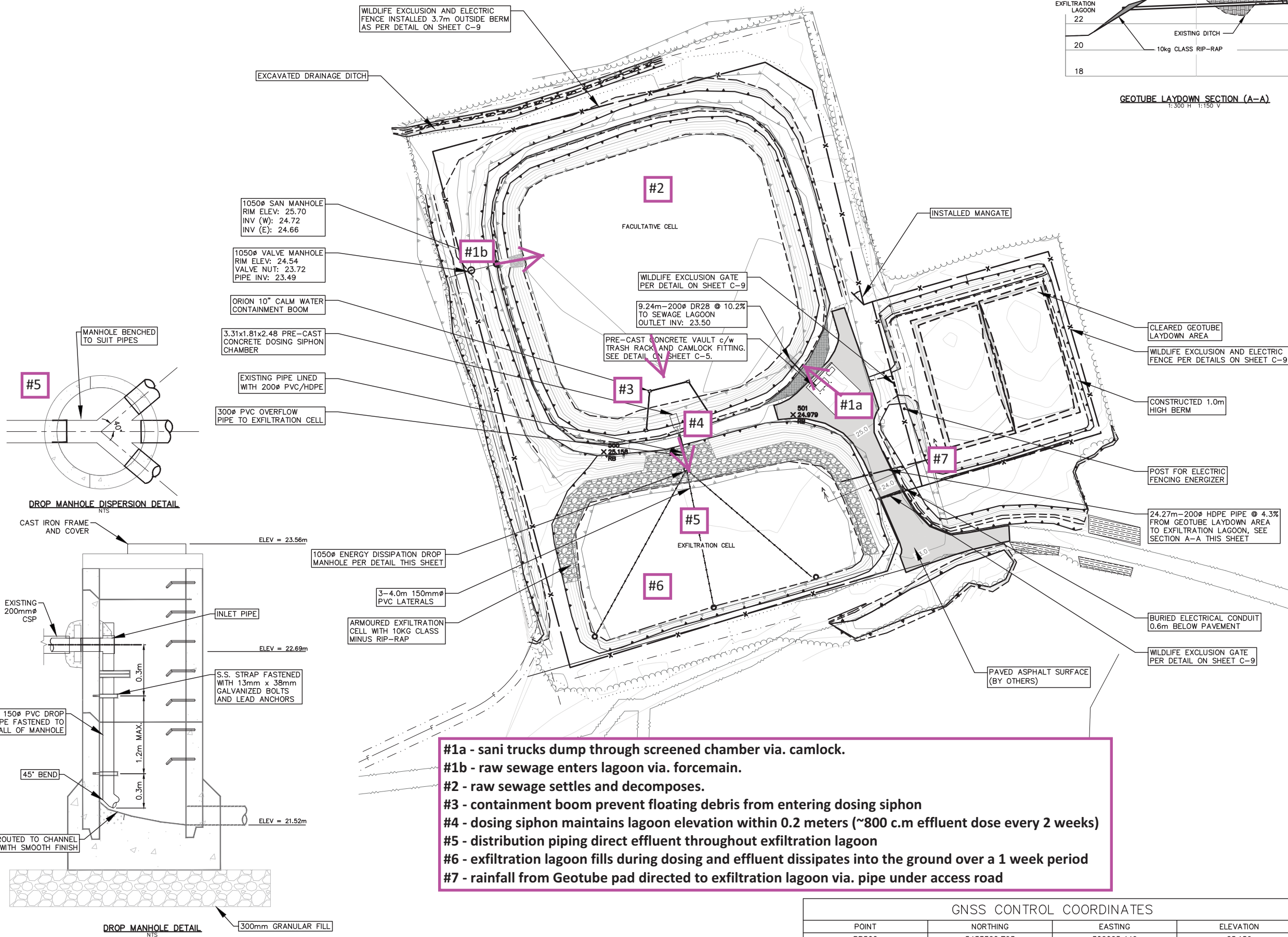


GEOTUBE LAYDOWN SECTION (A-A)
1:300 H 1:150 V



- #1a - sani trucks dump through screened chamber via. camlock.
- #1b - raw sewage enters lagoon via. forcemain.
- #2 - raw sewage settles and decomposes.
- #3 - containment boom prevent floating debris from entering dosing siphon
- #4 - dosing siphon maintains lagoon elevation within 0.2 meters (~800 c.m effluent dose every 2 weeks)
- #5 - distribution piping direct effluent throughout exfiltration lagoon
- #6 - exfiltration lagoon fills during dosing and effluent dissipates into the ground over a 1 week period
- #7 - rainfall from Geotube pad directed to exfiltration lagoon via. pipe under access road

Revision/Revision	Description/Description	Date/Date
5	ISSUED AS RECORD DRAWING	2016/11/29
4	RE-ISSUED FOR TENDER	2015/11/13
3	ISSUED FOR TENDER	2015/11/06
2	ISSUED FOR 99% REVIEW	2015/10/23
1	ISSUED FOR 33% REVIEW	2015/08/24

Client/client
**PACIFIC RIM NATIONAL PARK
PARKS CANADA
CANADA**
2040 Pacific Rim Highway
Ucluelet BC V0R 3A0

Project title/Titre du projet
**PACIFIC RIM NATIONAL PARK
SEWAGE LAGOON
REHABILITATION**

Consultant Signature Only
WEDLER ENGINEERING LLP.
Designed by/Concept par
ARG
Drawn by/Dessiné par
DBB
PWSC Project Manager/Administrateur de Projets TPSCG
TOM DUNPHY
Regional Manager, Architectural and Engineering Services
Gestionnaire régionale, Services d'architectural et de génie, TPSCG

Drawing title/Titre du dessin

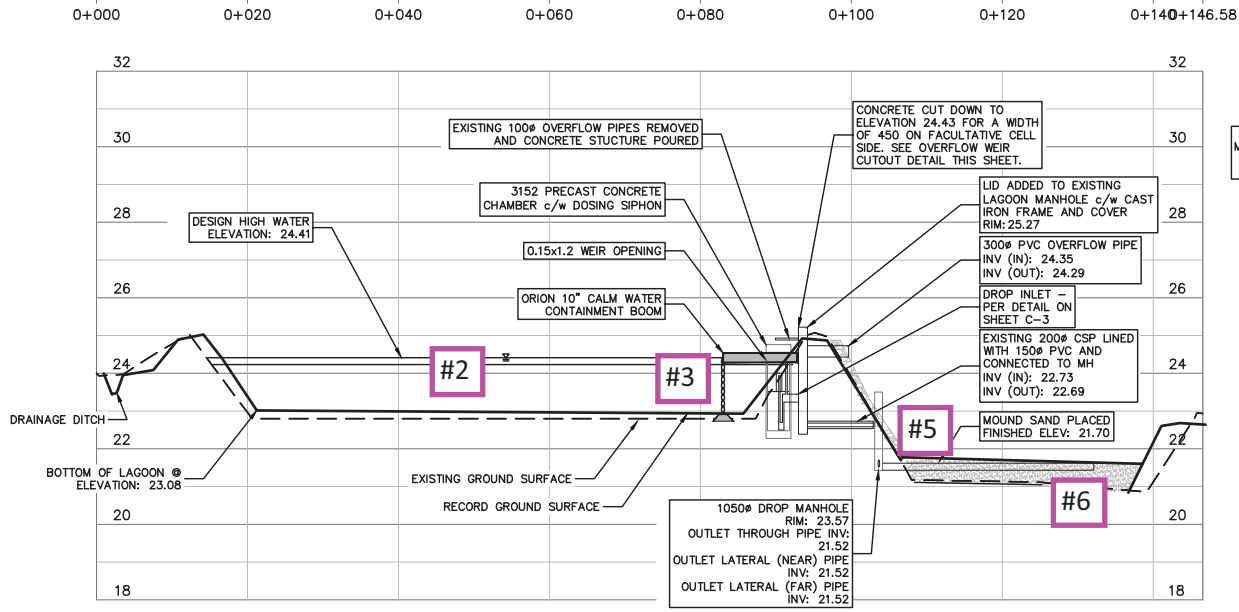
LAGOON REFURBISHMENT PLAN

Project No./No. du projet R.067787.001	Sheet/Feuille C3	Revision no./La Révision no. 5
--	----------------------------	--

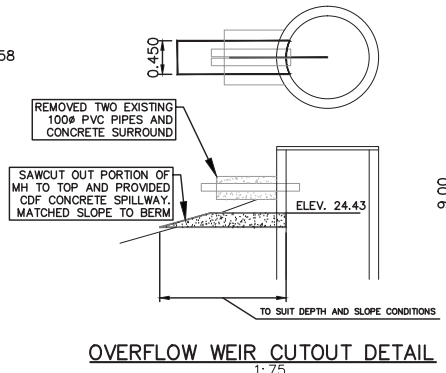
GNSS CONTROL COORDINATES			
POINT	NORTHING	EASTING	ELEVATION
RB500	5433360.793	306065.449	25.159
RB501	5433370.248	306113.717	24.979

COORDINATES SHOWN ARE GROUND-LEVEL UTM NAD83 (CSRS).

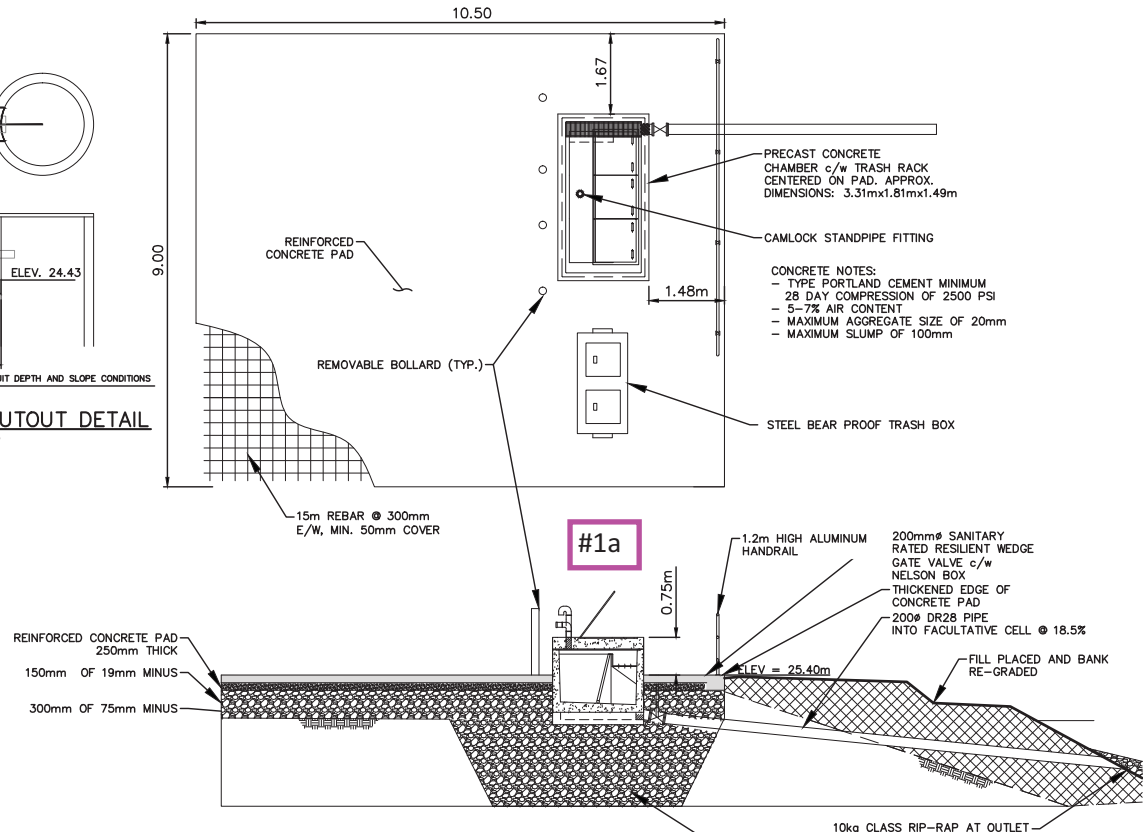




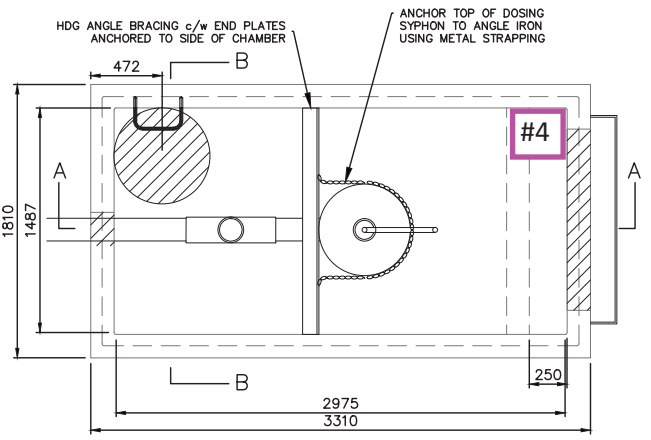
LAGOON SECTION W/ DOSING SIPHON DETAIL
N.T.S.



OVERFLOW WEIR CUTOUT DETAIL
1:75



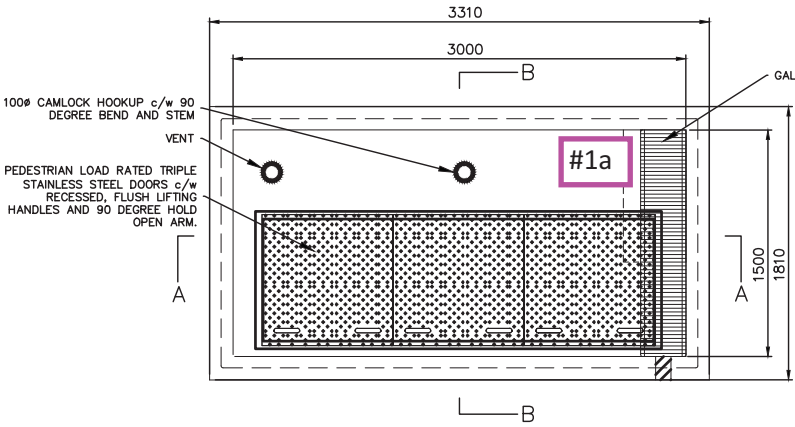
TRUCK DUMP STATION DETAIL
1:75



DOSING SIPHON CHAMBER PLAN VIEW
1:25

DOSING SIPHON VAULT NOTES:

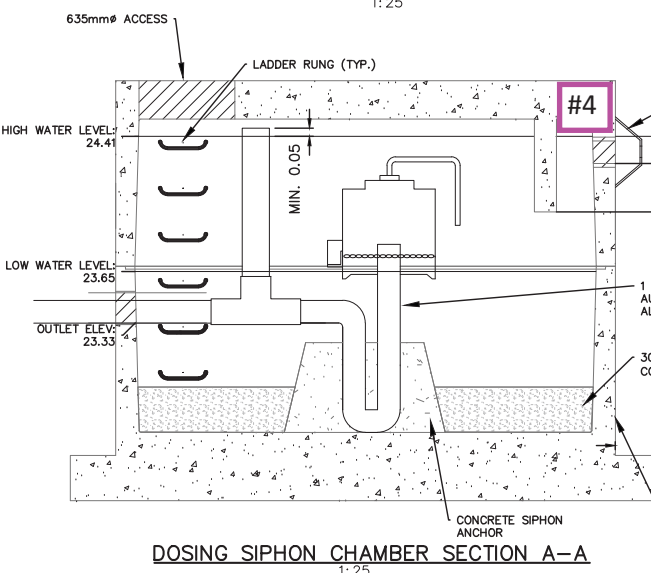
1. CHAMBER TO BE CONSTRUCTED AS SHOWN.
2. CONCRETE CHAMBER DIMENSIONS: 3.0 x 1.5 x 2 m.
3. CHAMBER TO HAVE 635 mm ACCESS CORE AS SHOWN.
4. KNOCK OUT CORES TO BE PROVIDED AS SHOWN.
5. UNIT TO COME WITH LIFTING INSERT.
6. CHAMBER c/w LADDER RUNGS AS REQUIRED.
7. EACH CORE TO HAVE ADDITIONAL REINFORCEMENT PLACED AROUND THE CORE, EQUAL OR GREATER THAN THE STEEL AREA REMOVED FOR THE CORE.
9. MINIMUM 25mm COVER FOR ALL REINFORCING STEEL.
10. APPROXIMATE MASS:
-TOP SECTION: 7,380 kg
-BOTTOM SECTION: 6,325 kg
11. MINIMUM CONCRETE STRENGTH: 35 MPa.
12. MINIMUM REBAR YIELD STRENGTH: 414 MPa.
13. ALL DIMENSIONS ARE IN MILLIMETERS.
14. REBAR TO BE HOT DIP-GALVANIZED.



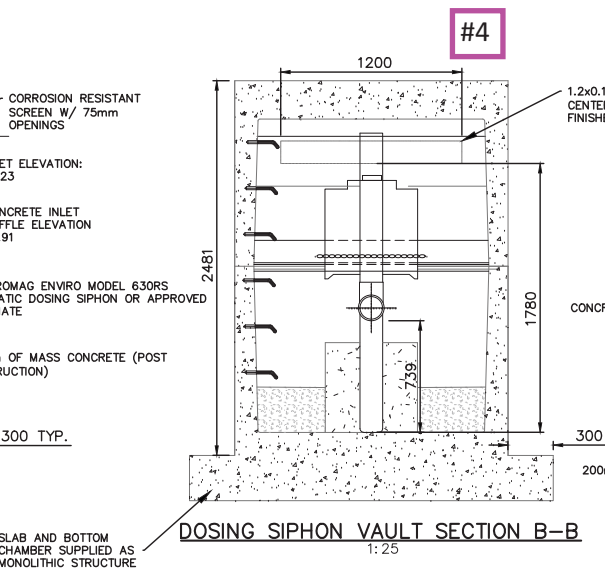
TRUCK DUMP STATION PLAN VIEW
1:25

DUMP STATION VAULT NOTES:

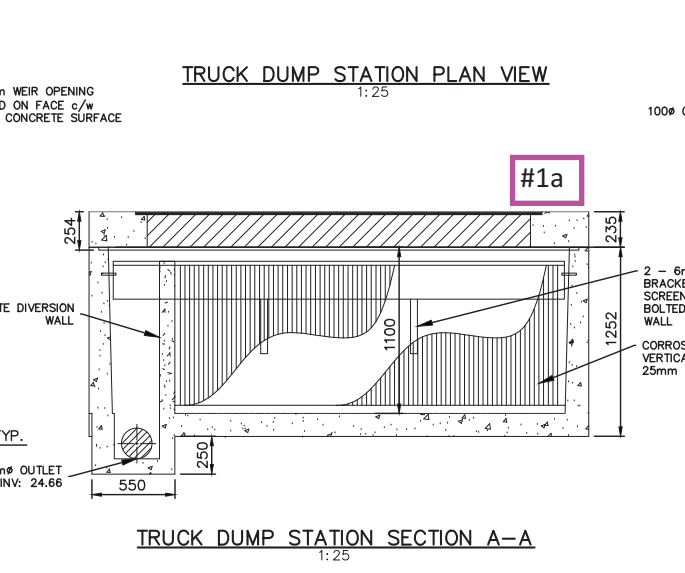
1. CONCRETE VAULT INSIDE DIMENSIONS: 3.0x1.5x1.1m
2. CHAMBER c/w 254mm THICK LID w/ TRIPLE DOOR AS SHOWN.
3. BOTTOM CHAMBER TO HAVE 0.3x0.3x1.5m TRENCH c/w GRATE.
4. UNIT c/w 102mm DRAINAGE HOLES AS SHOWN.
5. UNIT c/w ROUGH CORES FOR INLET/OUTLET AS REQUIRED.
6. EACH CORE TO HAVE ADDITIONAL REINFORCEMENT PLACED AROUND THE CORE EQUAL TO OR GREATER THAN THE STEEL AREA REMOVED FOR THE CORE.
7. ALL REINFORCEMENT HAS A MINIMUM OF 25mm CONCRETE COVER.
8. APPROXIMATE MASS:
-CHAMBER (w/ TROUGH): 7,000 KG
-LID (w/o HATCH): 3,750 KG
9. MINIMUM CONCRETE STRENGTH: 35 MPa
10. MINIMUM REBAR YIELD STRENGTH: 414 MPa
11. ALL DIMENSIONS ARE IN MILLIMETERS



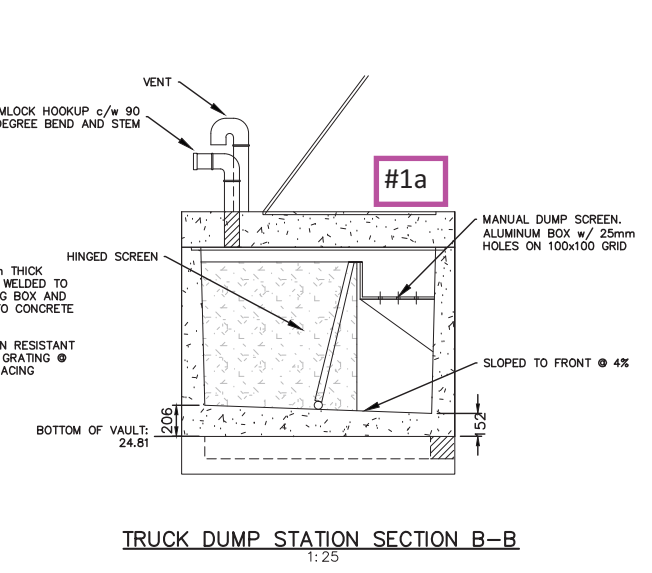
DOSING SIPHON CHAMBER SECTION A-A
1:25



DOSING SIPHON VAULT SECTION B-B
1:25



TRUCK DUMP STATION SECTION A-A
1:25



TRUCK DUMP STATION SECTION B-B
1:25

Revision/	Description/Description	Date/Date
5	ISSUED AS RECORD DRAWING	2016/11/29
4	RE-ISSUED FOR TENDER	2015/11/13
3	ISSUED FOR TENDER	2015/11/06
2	ISSUED FOR 99% REVIEW	2015/10/23
1	ISSUED FOR 33% REVIEW	2015/08/24

Client/client
**PACIFIC RIM NATIONAL PARK
PARKS CANADA
CANADA**
2040 Pacific Rim Highway
Ucluellet BC V0R 3A0

Project title/Titre du projet
**PACIFIC RIM NATIONAL PARK
SEWAGE LAGOON
REHABILITATION**

Consultant Signature Only
WEDLER ENGINEERING LLP.
Designed by/Concept par
ARG
Drawn by/Dessiné par
DBB
PWSC Project Manager/Administrateur de Projets TPSC
TOM DUNPHY
Regional Manager, Architectural and Engineering Services
Gestionnaire régionale, Services d'architecture et de génie, TPSC

Drawing title/Titre du dessin

**DUMP STATION AND DOSING
SIPHON DETAILS**

Project No./No. du projet	Sheet/Feuille	Revision no./La Révision no.
R.067787.001	C5	5