



No of Page/ N° de page	_____
---------------------------------	-------

<b>Date of Solicitation – Date de la demande</b> <b>September 6<sup>th</sup>, 2017</b>
<b>Address inquiries to – Adresser toute demande de renseignement à :</b> <b>See Section 2, Article 4.1.</b> <b>Voir Section 2, Article 4.1</b>
<b>Destination</b> <b>See Section 2, Annex A.</b> <b>Voir Section 2, Annexe A.</b>

**RETURN BIDS TO:**

**RETOURNER LES SOUMISSIONS A:**

See Section 1. Voir Section 1.
-----------------------------------

**STANDARD REQUEST FOR BID**

**INVITATION A SOUMISSIONNER - STANDARD**

The Bidder offers to provide to Canada the goods, services or both listed in the bid solicitation in accordance with the conditions set out in the bid solicitation and the prices set out in the bid.

This bid solicitation is issued in accordance with the conditions of the Supply Arrangement E60PQ-140003/.../PQ.

Le soumissionnaire offre de fournir au Canada les biens, services ou les deux énumérés dans la demande de soumissions aux conditions prévues dans la demande de soumissions et aux prix indiqués dans la soumission.

Cette demande de soumissions est émise conformément aux conditions de l'arrangement en matière d'approvisionnement E60PQ-140003/PQ

<b>Solicitation No. - N° de la demande</b> <b>F0243</b>	<b>Amendment No. - N° de modification</b>
--	---

<b>Solicitation closes – La demande prend fin :</b>  <b>at – à See Section 1</b> <b>Voir Section 1</b> <b>on – le See Section 1</b> <b>Voir Section 1</b>	<b>File No. - N° de dossier</b>
--	---------------------------------

**Instructions:**

**Municipal taxes are not applicable.**

**Unless otherwise specified in the bid solicitation, all prices quoted must be net prices in Canadian funds including Canadian customs duties, excise taxes, must be FOB, including all delivery charges to destination(s) as indicated. The amount for Applicable Taxes is to be shown as a separate item.**

**Instructions:**

**Les taxes municipales ne s'appliquent pas.**

**Sauf indication contraire dans la demande de soumissions, tous les prix indiqués doivent être des prix nets, en dollars canadiens, comprenant les droits de douane canadiens, la taxe d'accise et doivent être FAB, y compris tous frais de livraison à la (aux) destination(s) indiqué(s). Le montant des taxes applicables doit apparaître séparément.**

<b>Supplier Name and Address – Nom et adresse du fournisseur</b>
<b>Telephone No. - N° de téléphone</b> <b>Facsimile No. - N° de télécopieur</b>
<b>Name and title of person authorized to sign on behalf of supplier (type or print)</b> <b>Nom et titre de la personne autorisée à signer au nom du fournisseur (caractère d'impression)</b>
<b>Signature : _____</b> <b>Date : _____</b>



**TABLE OF CONTENTS**

Section 1 – Invitation and Instructions to Bidders

Section 2 – Resulting Contract including a list of required goods and services

**SECTION 1 – INVITATION AND INSTRUCTIONS TO BIDDERS**

**Step 1. For Tier 2 and Tier 3 only (If Tier 1, skip this step and proceed with step 2)**

Is this a Manufacturer Product Specific Procurement? If yes, the IU must complete and submit the Manufacturer Product Specific form to AB. If form approved, keep copy on file and proceed with the step 2.

**Step 2.  Competitive or  Non-Competitive**

For Competitive Requirements:

The Bidder must provide the following information AFTER bid closing, if requested to do so by Canada:

- One or more of the following price justifications:
  1. a current published price list indicating the percentage discount available to Canada; or
  2. a copy of paid invoices for the like quality and quantity of the goods, services or both sold to other customers; or
  3. a price breakdown showing the cost of direct labour, direct materials, purchased items, engineering and plant overheads, general and administrative overhead, transportation, etc., and profit; or
  4. any other supporting documentation as requested by Canada.

For Non-Competitive Requirements:

The Bidder must provide the following information WITH the bid:

- The information requested by Canada in Annex A herein.
- One or more of the following price justifications:
  1. a current published price list indicating the percentage discount available to Canada; or
  2. a copy of paid invoices for the like quality and quantity of the goods, services or both sold to other customers; or
  3. a price breakdown showing the cost of direct labour, direct materials, purchased items, engineering and plant overheads, general and administrative overhead, transportation, etc., and profit; or
  4. any other supporting documentation as requested by Canada.

**Step 3.  General or  PSAB**

**Terms of the RFB:**

This RFB is issued pursuant to the Supplier’s Furniture for Workspaces Supply Arrangement (SA) that forms part of the series of SAs issued by PWGSC with the number E60PQ-140003/PQ. The terms and conditions in the Supplier’s SA apply to and form part of this RFB. Bidders who submit a bid agree to be bound by those terms and conditions as well as the terms and conditions in this RFB.

The Bidder must provide the following information WITH the bid:

- The information requested by Canada in Annex A herein.

**Bid Evaluation**

An evaluation team composed of representatives of Canada will evaluate the bids.

<b>RFB Issued by:</b>	
Identified User’s (IU) Department/Agency/Crown Corporation: Contact for this RFB:	See Section 2, article 4.1 below.
<b>RFB Closing - Submit Bid:</b>	
Bids must be submitted to the Contracting Authority on the date and at the time indicated below.	

By no later than date and time:	a. September 15 <sup>th</sup> , 2017 b. 14:00 EDT
- To e-mail address (if applicable)	<a href="mailto:BidReceipt-ReceptiondeSoumission@inspection.gc.ca">BidReceipt-ReceptiondeSoumission@inspection.gc.ca</a>
<b>RFB Enquiries</b>	
Unless a different period is listed in the adjacent column, Bidders may submit enquires about the RFB to the Contracting Authority two business days prior to the RFB closing date. Enquiries received after the timeline indicated may not be answered.	2 business days

## SECTION 2 - RESULTING CONTRACT CLAUSES

<b>1.</b>	<b>Terms and Conditions of the Contract</b>	
	The terms and conditions of Parts 6A and 6C of the Supplier's SA within the series E60PQ-140003/PQ apply to and form part of this Contract.	
<b>2.</b>	<b>Security Requirement</b> (Applies if article a. or b. is checked)	
2.1	The applicable security requirement(s) is (are) set out in the Security Requirement Check List attached as Annex B of this contract. The Contractor must fulfill the security requirements by meeting the terms below (the checked article applies).	
a.		<b>Contractor may be escorted; possession of security clearance not required.</b> Contractor personnel MAY NOT ENTER NOR PERFORM WORK ON sites where PROTECTED or CLASSIFIED information or assets are kept, without an escort provided by the department or agency for which the work is being performed.
b.		<b>Possession of security clearance(s) is required.</b> The Contractor must meet the security clearance requirements contained in the clausings in Annex B herein.
c.	<b>X</b>	<b>There is no security requirement associated with this contract.</b>
<b>3.</b>	<b>Requirement</b>	
3.1	The Contractor must perform the Work listed in Annex A herein.	
<b>4.</b>	<b>Authorities</b>	
4.1	<b>Contracting Authority</b>	
	Name:	<b>Karine Chrétien</b>
	Title:	<b>Procurement Officer</b>
	Department/Agency/Crown Corporation:	<b>Canadian Food Inspection Agency</b>
	Address:	<b>59 Camelot Drive, Ottawa ON K1A 0Y9</b>
	Telephone No.:	<b>(613) 773-7606</b>
	Facsimile No.:	<b>(613) 773-7615</b>
	E-mail address:	<a href="mailto:Karine.chretien@inspection.gc.ca">Karine.chretien@inspection.gc.ca</a>
4.2	<b>Project Authority [will be provided at contract award]</b>	
	Name:	
	Title:	
	Department/Agency/Crown Corporation:	
	Address:	
	Telephone No.:	
	Facsimile No.:	

	E-mail address:	
4.3	<b>Contractor's Representative</b>	
	As set out in Annex A, Table 10 below.	
5.	<b>Payment</b>	
	Method of Payment	
	The checked box applies. If the Contractor's SA indicates acceptance for payment by credit card, that method may be used in conjunction with the following.	
	<input checked="" type="checkbox"/>	Single Payment
	<input type="checkbox"/>	Multiple Payment
6.	<b>Invoicing</b>	
	Further to the Invoicing terms of the WTCM document, the Contractor will deliver the original and one copy of the invoice to the following address for certification and payment:	
	Name of the organization and contact: <b>[will be provided at contract award]</b>	
	Address: <b>[will be provided at contract award]</b>	
7.	<b>Defence Contract. This clause applies if the box below is checked.</b>	
	<input type="checkbox"/>	The Contract is a defence contract within the meaning of the <a href="#">Defence Production Act</a> , R.S.C. 1985, c. D-1.

ANNEX A  
REQUIREMENT and BASIS OF PAYMENT

---

---

**1. IU to complete an Annex A for each category with the exception of the rules specified herein.**

**2. For Tier 2 and 3 competitive requirements, Conforming Suppliers must acquire the bid solicitation document from GETS and IUs are not to identify the Conforming Suppliers in the solicitation or NPP.**

---

---

1. Category Selection

The requirement includes the following category (ies) of work (*check applicable box(es)*):

1.  Category 1 – Interconnecting Panels and Freestanding Systems

**RULE:** Metal Storage

Identified Users may procure metal storage products forming part of Category 1 when combined with interconnecting panels and/or freestanding systems and if the total sum of metal storage products represent less than 20% of the requirement. If this rule does not apply to the requirement, Category 3 must be used for the metal storage products forming part of this category.

- Category 1 Non-SA (NSA) products forming part of this requirement, refer to Annex D of this RFB (approval by AB required before adding to requirement)

2.  Category 2 – Freestanding Height Adjustable Desk / Table Products

**RULE:** Category 1 and 2

Category 1 and 2 can be combined for tier 2 and tier 3 requirements when Category 2 surfaces comprise no more than 50% of the total sum of work surfaces.

- Category 2 Non-SA (NSA) products forming part of this requirement, refer to Annex D of this RFB (approval by AB required before adding to requirement)

3.  Category 3 – Metal Filing and Storage Cabinets

**RULE:** High Storage Products

Identifying the maximum height of the Personal Storage Towers, Wardrobes and Storage Cabinets is acceptable when the requirement is to match existing panel systems heights forming part of an existing inventory. Additional storage forming part of the same requirement not incorporated into an existing panel system workstation must not specify maximum heights and added as a separate line item at article 3 of this Annex.

Maximum Height for products at article 3 of this Annex is 51”.

- Category 3 Non-SA (NSA) products forming part of this requirement, refer to Annex D of this RFB (approval by AB required before adding to requirement)

4.  Category 4 – Wood Veneer – Freestanding Products

- Category 4 Non-SA (NSA) products forming part of this requirement, refer to Annex D of this RFB (approval by AB required before adding to requirement)

5.  Category 5 – Ancillary and Lighting Products

- Category 5 Non-SA (NSA) products forming part of this requirement, refer to Annex D of this RFB (approval by AB required before adding to requirement)

6.  Category 6 - Support Space – Collaborative Furniture

Category 6 can be further subdivided by space or like item in order to increase or allow competition. Space is defined as a location available for a particular purpose such as a meeting room space or a collaborative space. Like items are defined as products with similar design and construction.

- Category 6 Non-SA (NSA) products forming part of this requirement, refer to Annex D of this RFB (approval by AB required before adding to requirement)

7.  Product Related Services (*cannot be combined with Category 1-6 requirements for Tier 2 and 3*)

2. GoCUID identification and/or floor plan(s)

2.1 For Product Related Services requirements (*IU to skip article 2 and complete Section A of Table 7 at article 3 of this Annex*)

2.2 For Categories 1-6:

Scenario a.  Does not include a floor plan – Category(ies) \_\_\_\_\_

*(IU to complete section A of Tables 1-3; Section A of Tables 4-6 if optional quantities are required ;Table 8 in its entirety at article 3 of this Annex and Annex D if NSA products form part of the requirement).*

Scenario b.  Includes floor plan(s) WITH identification of product information in Annex C of this RFB. Category(ies) \_\_\_\_\_.

Floor plan(s) are used for information purposes (*IU to attach plan(s) and complete information at Annex C of this RFB and complete Section A of Tables 2 & 3; Section A of Tables 6 if optional quantities are required ;Table 8 in its entirety at article 3 of this Annex and Annex D if NSA products form part of the requirement.*

*When optional quantities are required, IU to complete Table 4. Optional quantities identified at Table 4 will not be shown on floor plan(s) at Annex C of this RFB. )*

Refer to Annex A article 4 of the SA for Site inspection and Documentation instructions after contract award.

Site Inspection Date: \_\_\_\_\_ (*to be completed by IU at contract award*)

3. Product and Pricing Tables

**Bidder to complete:** Sections B of the tables identified by the IU in article 3 of this Annex as well as Tables 9 and 10. In a resulting contract, the term “Bid” means the Supplier’s commitment, the term “Bidder” means “Contractor”.

*(IU to insert either “firm unit” or “firm lot” or “firm price” or “firm hourly rate” in Section B of each of Tables 1-7 and make other corresponding adjustments.)*

**Product Category:** \_\_\_\_\_ (*Add Product Category #, Tables 1-10 (except 7) to be repeated for additional product categories*)

**Table 1 – Product (Only applicable for Scenario A procurements)**

Section A - IU REQUIREMENT				Section B – SUPPLIER’S BID		
#	GoCUID	Description of Product (optional field)	Qty	Supplier Part Number	Firm _____ Price** \$	Extended Total [Qty x Price] \$
<b>Category 1a</b>						
<b>1. Panel 36x24</b>						
1.1	PAFRBHNP24	Frame, non-powered 36x24	3			
1.2	PAELBHxxxFA24	Fabric element 30x24	6			
<b>2. Panel 36x42</b>						
2.1	PAFRBHNP42	Frame, non-powered 36x42	1			
2.2	PAELBHxxxFA42	Fabric element 30x42	2			
<b>3. Panel 36x48</b>						
3.1	PAFRBHNP48	Frame, non-powered 36x48	4			
3.2	PAELBHxxxFA48	Fabric element 30x48	8			
<b>4. Panel 36x60</b>						
4.1	PAFRBHNP60	Frame, non-powered 36x60	1			
4.2	PAELBHxxxFA60	Fabric element 30x60	2			
<b>5. Panel 51x60 1x side all fabric 1x side powered</b>						
5.1	PAFRBHPW60	Frame, powered above the work surface 36x60	4			
5.2	PAFRWANP60	Additional frame, non-powered 15x60	4			
5.3	PAELBHCPDFA60	Fabric element with cut-out 30x60	4			

Section A - IU REQUIREMENT				Section B – SUPPLIER’S BID		
#	GoCUID	Description of Product (optional field)	Qty	Supplier Part Number	Firm Price** \$	Extended Total [Qty x Price] \$
5.4	PAELBHxxxFA60	Fabric element 30x60	4			
5.5	PAELBHxxxFA60	Fabric element 15x60	8			
<b>6. Panel 51x24 all fabric</b>						
6.1	PAFRBHNP24	Frame36x24	4			
6.2	PAFRWANP24	Additional frame, non-powered 15x24	4			
6.3	PAELBHxxxFA24	Élément de tissu 30x24	8			
6.4	PAELSAxxxFA24	Élément de tissu 15x24	8			
<b>7. Panel 51x36 all fabric</b>						
7.1	PAFRBHNP36	Frame, non-powered 36x36	3			
7.2	PAFRWANP36	Additional frame, non-powered 15x36	3			
7.3	PAELBHxxxFA36	Fabric element 30x36	6			
7.4	PAELSAxxxFA36	Fabric element 15x36	6			
<b>8. Panel 51x48 all fabric</b>						
8.1	PAFRBHNP48	Frame, non-powered 36x48	4			
8.2	PAFRWANP48	Additional frame, non-powered 15x48	4			
8.3	PAELBHxxxFA48	Fabric element 30x48	8			
8.4	PAELSAxxxFA48	Fabric element 15x48	8			
<b>Category 1b</b>						
9	ACPRPMAFxxxxxxxx1542xx	Panel mounted privacy screen, frosted 15x42	1			
10	ACPRPMAFxxxxxxxx1560xx	Panel mounted privacy screen, frosted 15x60	1			
11	ACPRPMAFxxxxxxxx1524xx	Panel mounted privacy screen, frosted 15x24	3			
12	ACPRPMAFxxxxxxxx1548xx	Panel mounted privacy screen, frosted 15x48	4			
13	WSxxGGLHRxxxxxxxx6024	Work surface 2 full legs	12			
14	SPPDWLLxxxxBFCSxxxx22	Mobile pedestal 6/12 with lock	8			
15	SPPTFSLxxLWFFCD542424	Personal storage tower, wardrobe left - 2 drawers - 1 locked	4			
16	SPPTFSLxxDWFFCD542424	Personal storage tower, wardrobe right - 2 drawers - 1 locked	4			
17	SPPTFSLxxRW2FCD542424	Personal storage tower, wardrobe right - 6/6/12 - 1 locked	2			
18	SPPTFSLxxLW2FCD542424	Personal storage tower, wardrobe left - 6/6/12 - 1 locked	2			
<b>Category 2</b>						
	FSCAMC4824	Sit/Stand Range Height Adjustable Work Surfaces, with crank, 48x30	12			
<b>Category 3</b>						
	LLFC4DFDXXX2042XXXX	Four (4) drawers cabinet 20x42	1			
**Must not exceed ceiling unit price in SA.					Product Total	\$

**Table 2 - Delivery**

Section A - IU REQUIREMENT				Section B – SUPPLIER’S BID		
Product Item # from Table 1	Location	Desired Date (Y/M/D)	Desired Time: Normal Business Hours (Normal) Or Outside Normal Business Hours (Outside)*	Supplier will deliver on the date and at the time below*	Firm Price \$	Extended Total (Qty x Firm Unit Price) \$
1	Canadian Food Inspection Agency 2021 Union St, 14 <sup>th</sup> floor, Montréal Qc H3A 2S9	2017-09-22	[Normal]	(Y) (M) (D)		
*If no dates and times are added by the Supplier, the Supplier agrees to deliver on the Desired Date and Time. [Normal Business Hours 8:00 – 17:00, as per SA, Annex A, article 5] Add more rows if necessary.				Delivery Total:		\$

**Table 3 – Installation**

Section A - IU REQUIREMENT				Section B – SUPPLIER’S BID		
Product Item # from Table 1	Location	Desired Date (Y/M/D)	Desired Time: Normal Business Hours (Normal) Or Outside Normal Business Hours (Outside)*	Supplier will install on the date and at the time below*	Firm Price \$	Extended Total (Qty x Firm Unit Price) \$
1	Canadian Food Inspection Agency 2021 Union St, 14 <sup>th</sup> floor, Montréal Qc H3A 2S9	2017-09-22	[Outside Normal]	(Y) (M) (D)		
*If no dates and times are added by the Supplier, the Supplier agrees to install on the Desired Date and Time. [Normal Business Hours 8:00 – 17:00, as per SA, Annex A, article 5]				Installation Total:		\$

**Table 4 – Optional Product**

**Table 5 – Optional Delivery**

**Table 6 – Optional Installation**

**Table 7 – Product Related Services**

**Table 8 – Standard Finishes and Canada’s Facilities to Accommodate the Delivery and Certifications**

<b>1.</b>	<b>Standard Finishes</b>	
1.1	IU is to consult the Supplier’s Website identified in Part 6A of the SA to view the available finishes. Within ten business days of the contract award, the Contracting Authority will provide the Contractor with a written notice of Canada’s finish choices for each of the product(s) in Annex A. The Contractor will deliver the products corresponding to Canada’s choice of specific finishes(s). No additional charge will be applied to Canada.	
<b>2.</b>	<b>Canada’s Facilities to Accommodate the Delivery</b>	
2.1	Loading Dock/Location	
A	Location	2021 Union St, 14 <sup>th</sup> floor, Montréal Qc H3A 2S9
B	Dock	N/A



C	Lift	N/A
D	Door	Front Door
2.2	Freight Elevator	Yes
2.3	Other	
<b>Continuance of Certifications</b>		
The Bidder certifies that by submitting a bid in response to the RFB, the Bidder, and any of the Bidder's members if the Bidder is a Joint Venture, continues to comply with all of the certifications listed in Parts 6A and 6B of the Bidder's SA for Work Spaces, as follows:		
3.1	Integrity Provisions	
3.2	Federal Contractor's Program for Employment Equity	
3.4	Product Conformance	
3.5	Price Certification (In accordance with the SA, Part 6B)	

**Table 9 - Bid Evaluation and Contract Total (Canada may complete if not completed by the Bidder)**

1	Product Total (Table 1) or Annex C Total	\$
2	<b>Optional</b> Product Total (Table 4)	\$
3	Delivery Total (Table 2)	\$
4	<b>Optional</b> Delivery Total (Table 5)	\$
5	Installation Total (Table 3)	\$
6	<b>Optional</b> Installation Total (Table 6)	\$
7	Product Related Services Total (if applicable) (Table 7)	\$
8	NSA Total (if applicable) refer to Annex D	\$
9	Hardware Total as per article 1.5 of Annex A-1 of SA (if applicable)	\$
10	<b>Total Evaluated (Bid) Price* (1 + 2 + 3 + 4 + 5 + 6+ 7+8+9):</b>	\$\$
11	Applicable Tax(es):	\$
12	Total Estimated Cost (10+11):	\$

**Table 10 – Bidder's Authorized Representative**

<b>Table 6 – Bidder's Authorized Representative</b>		
1.	Bidder's Authorized Representative for the Bid and the Contract	
	Name:	Telephone:
		E-Mail:
		Other:

\*At contract award, "Total Evaluated (Bid) Price" becomes "Contract Price".

**ANNEX C  
FLOOR PLAN(s)**

**Instructions to Bidder(s):**

For scenario B procurements Bidders must provide:

- a) completed floor plan(s) with proposed SA approved products;
- b) a product listing of proposed SA approved products offered at floor plan(s).

As a minimum the product listing must include the following information:

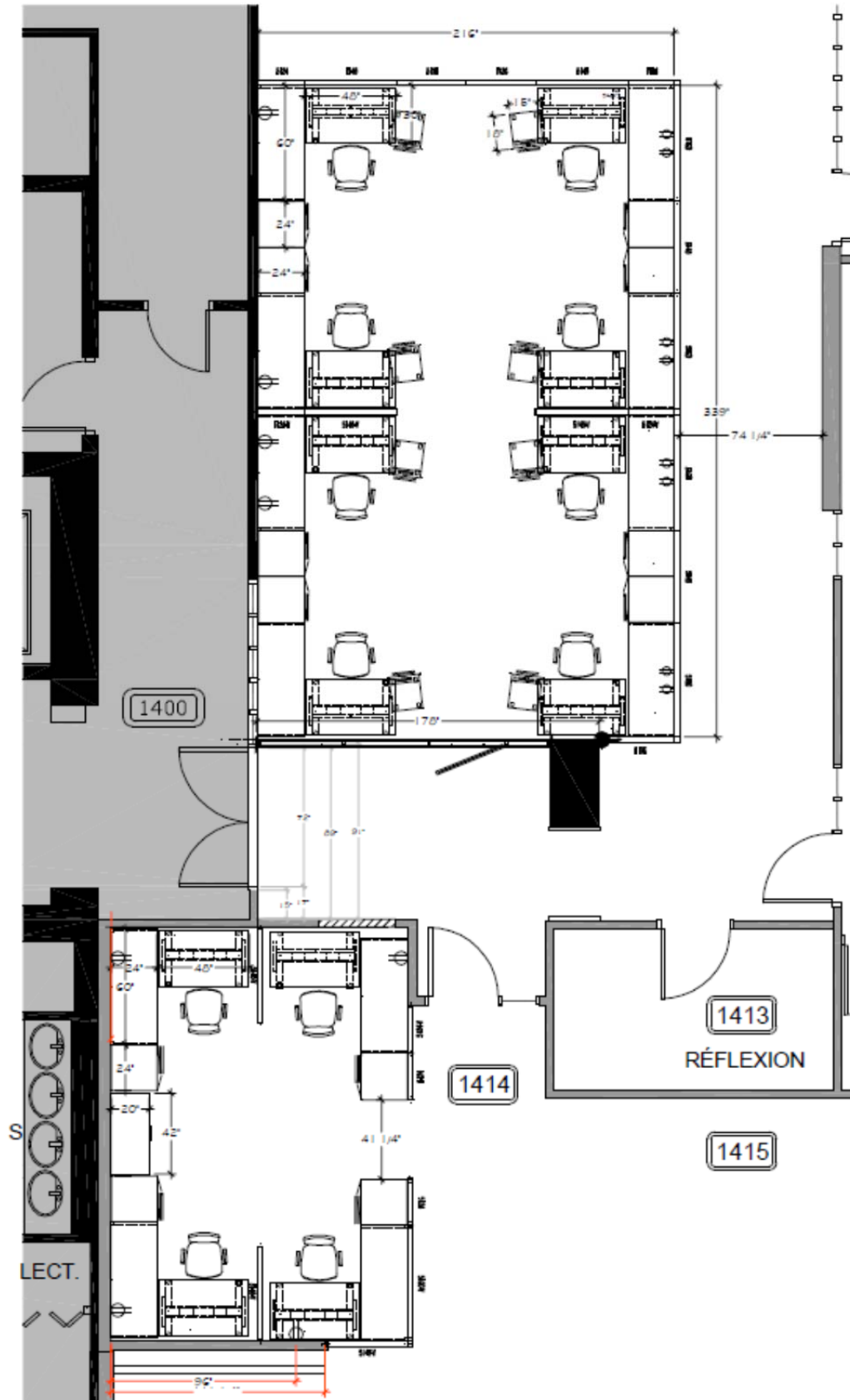
- Supplier part numbers;
- brief product descriptions;
- quantities;
- firm unit prices.

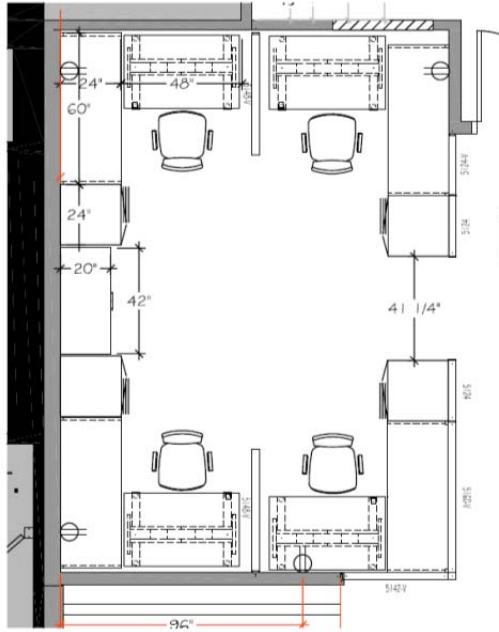
By submitting a bid, the Bidder certifies that their submission includes all components and quantities required and identified in the floor plan(s) in accordance with the product descriptions, the product configurations and panel matrices or workstation layouts stipulated at Annex C.

**\*At contract award, “By submitting a bid, the Bidder...” becomes “The Contractor...”.**

NSA products forming part of the requirement will be identified at Annex D of this RFB.

1) Floor Plan(s) in PDF or AutoCAD version





## 2) Product Descriptions

Self-supporting furniture

- 1 table 30x48 adjustable crank with metal base surface Laminate High Pressure
- 1 fixed table 24x60 with 2 solid laminated bases, surface Laminated High Pressure
- Depending on the plan, 1 personal tour with cloakroom, closed storage and drawer 6/6/12 or 1 personal tour with cloakroom, closed storage and drawer 12/12
- According to the plan, 1 Box 6/12 with cushion on lockable wheels
- All furniture must have the same grade 1b and category 2 finish

Partition

- Depending on the plan, the partition must include a base + panel on a fabric panel or a frosted glass privacy screen
- Electrified 2 duplex / 1 voice / 1 data partition above the work surface
- Connection to the ceiling (ceiling to floor)

General Notes

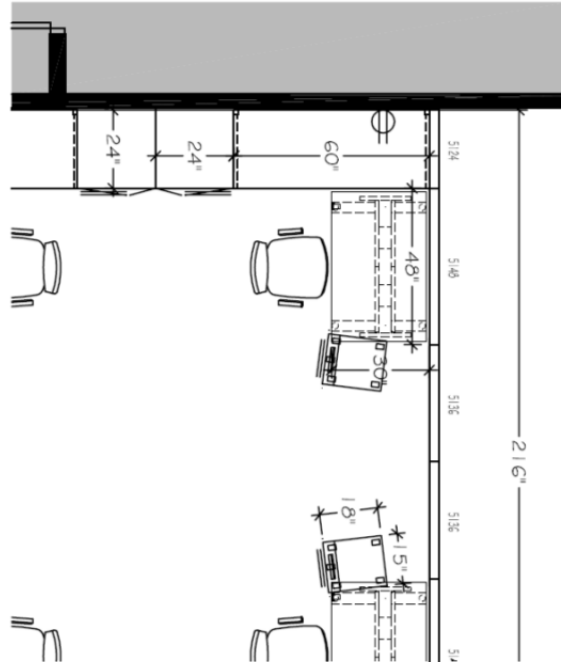
- The supplier must provide at least in its bid: Plan, price list broken down with product code, description and firm price
- Installation price including all costs associated with installation
- Delivery price
- Work will be done outside normal working hours

3) **Product Configurations**

#	CIUGDC	Description de produit
<b>Category 1a</b>		
<b>1.</b>	<b>Panel 36x24</b>	
1.1	PAFRBHNP24	Frame, non-powered 36x24
1.2	PAELBHxxxFA24	Fabric element 30x24
<b>2.</b>	<b>Panel 36x42</b>	
2.1	PAFRBHNP42	
2.2	PAELBHxxxFA42	Fabric element 30x42
<b>3.</b>	<b>Panel 36x48</b>	
3.1	PAFRBHNP48	Frame, non-powered 36x48
3.2	PAELBHxxxFA48	
<b>4.</b>	<b>Panel 36x60</b>	
4.1	PAFRBHNP60	Frame, non-powered 36x60
4.2	PAELBHxxxFA60	Fabric element 30x60
<b>5.</b>	<b>Panel 51x60 1x side all fabric 1x side powered</b>	
5.1	PAFRBHPW60	Frame, powered above the work surface 36x60
5.2	PAFRWANP60	Additional frame, non-powered 15x60
5.3	PAELBHCPDFA60	Fabric element with cut-out 30x60
5.4	PAELBHxxxFA60	
5.5	PAELBHxxxFA60	Fabric element 15x60
<b>6.</b>	<b>Panel 51x24 all fabric</b>	
6.1	PAFRBHNP24	Frame 36x24
6.2	PAFRWANP24	Additional frame, non-powered 15x24
6.3	PAELBHxxxFA24	Élément de tissu 30x24
6.4	PAELSAxxxFA24	Élément de tissu 15x24
<b>7.</b>	<b>Panel 51x36 all fabric</b>	
7.1	PAFRBHNP36	Frame, non-powered 36x36
7.2	PAFRWANP36	Additional frame, non-powered 15x36
7.3	PAELBHxxxFA36	Fabric element 30x36
7.4	PAELSAxxxFA36	Fabric element 15x36
<b>8.</b>	<b>Panel 51x48 all fabric</b>	
8.1	PAFRBHNP48	
8.2	PAFRWANP48	Additional frame, non-powered 15x48
8.3	PAELBHxxxFA48	Fabric element 30x48
8.4	PAELSAxxxFA48	Fabric element 15x48
<b>Category 1b</b>		
9	ACPRPMAFxxxxxxxx1542xx	Panel mounted privacy screen, frosted 15x42
10	ACPRPMAFxxxxxxxx1560xx	
11	ACPRPMAFxxxxxxxx1524xx	Panel mounted privacy screen, frosted 15x24
12	ACPRPMAFxxxxxxxx1548xx	Panel mounted privacy screen, frosted 15x48
13	WSxxGGLHRxxxxxxxx6024	Work surface 2 full legs
14	SPPDWLxxxBFCsxxx22	Mobile pedestal 6/12 with lock
15	SPPTFSLxxLWFFCD542424	Personal storage tower, wardrobe left - 2 drawers - 1 locked
16		
17	SPPTFSLxxRW2FCD542424	Personal storage tower, wardrobe right - 6/6/12 - 1 locked
18	SPPTFSLxxLW2FCD542424	Personal storage tower, wardrobe left - 6/6/12 - 1 locked
<b>Category 2</b>		
	FSCAMC4824	Sit/Stand Range Height Adjustable Work Surfaces, with crank, 48x30
<b>Category 3</b>		
	LLFC4DFDXXX2042XXXX	Four (4) drawers cabinet 20x42

**4) Workstation Layout(s) or Panel Matrix**

**b. Workstation Layout(s)**



**1. Product and Pricing**

1	Product Total	INSERT \$ AT ANNEX A, ARTICLE 3, TABLE 9, LINE 1 FOR THE RESPECTIVE CATEGORY
2	Delivery Total	INSERT \$ AT ANNEX A, ARTICLE 3, TABLE 9, LINE 3 FOR THE RESPECTIVE CATEGORY
3	Installation Total	INSERT \$ AT ANNEX A, ARTICLE 3, TABLE 9, LINE 5 FOR THE RESPECTIVE CATEGORY



PURCHASING OFFICE - BUREAU DES ACHATS

**CONTRACT – CONTRAT**

Canada accepts your bid to provide to Canada the goods, services or both described in the Contract in accordance with the conditions and at the prices set out in the Contract.

Le Canada accepte votre soumission de fournir au Canada les

biens, services ou les deux décrits dans le contrat conformément aux conditions et aux prix prévus au contrat.

You are requested to sell to the Majesty the Queen in right of Canada, in accordance with the terms and conditions set out herein, referred to herein or attached hereto, the supplies and services listed herein and on any attached sheets at the price or prices set out therefor.

Nous vous demandons de vendre à Sa Majesté la Reine du chef du Canada, aux conditions énoncées ou incluses par référence dans les présentes et aux annexes ci-jointes, les articles et les services énumérés dans les présentes et sur toute feuille ci-annexée, au(x) prix indiqué(s).

The vendor hereby accepts this contract Le fournisseur accepte le présent contrat	
Name, title of person authorized to sign (type or print) Nom et titre du signataire autorisé (caractère d'impression)	
Signature	Date

Page	of de
------	----------

File No. – N° de dossier
Date of Contract – Date du Contrat
Contract No. - N° du contrat

PWGSC-TPSGC 9400-4 (11/2008) modified by Furniture Division November 2015

Return signed copy forthwith - Prière de retourner une copie dûment signée immédiatement

Client Reference No. (optional) - N° du référence du client (facultatif)	
Financial Code(s) – Code(s) financier(s)	
Duty - Droits  <input checked="" type="checkbox"/> Included <input type="checkbox"/> Excluded Inclus Ensus	GST - TPS/ HST – TVH  <input checked="" type="checkbox"/> Included <input type="checkbox"/> Inclus Excluded En sus
FOB – FAB DESTINATION	
Destination See Section 2, Annex A. Voir Section 2, Annexe A.	
Invoices - Original and two copies must be completed and sent to: Factures – L’original et deux copies doivent être remplis et envoyés à : See Section 2, Article 6. Voir Section 2, Article 6.	
Address inquiries to : - Adresser toute demande de renseignements à : See Section 2, Article 4.1. Voir Section 2, Article 4.1.	
Area Code and Telephone No. Code régional et N° de téléphone	Facsimile No. N° de télécopieur
Total estimated cost – Coût total estimatif	
For the Minister – Pour le Ministre	

