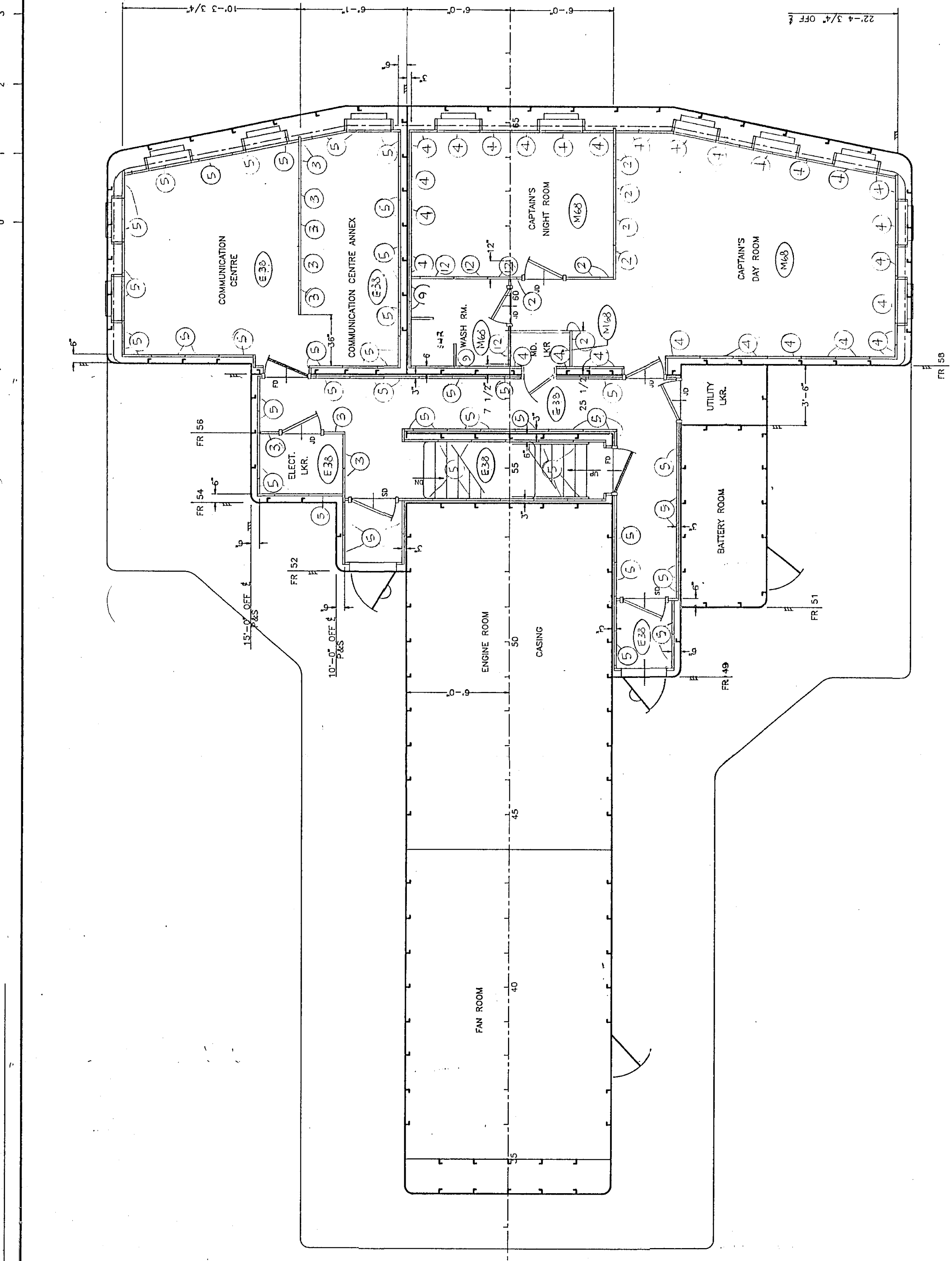
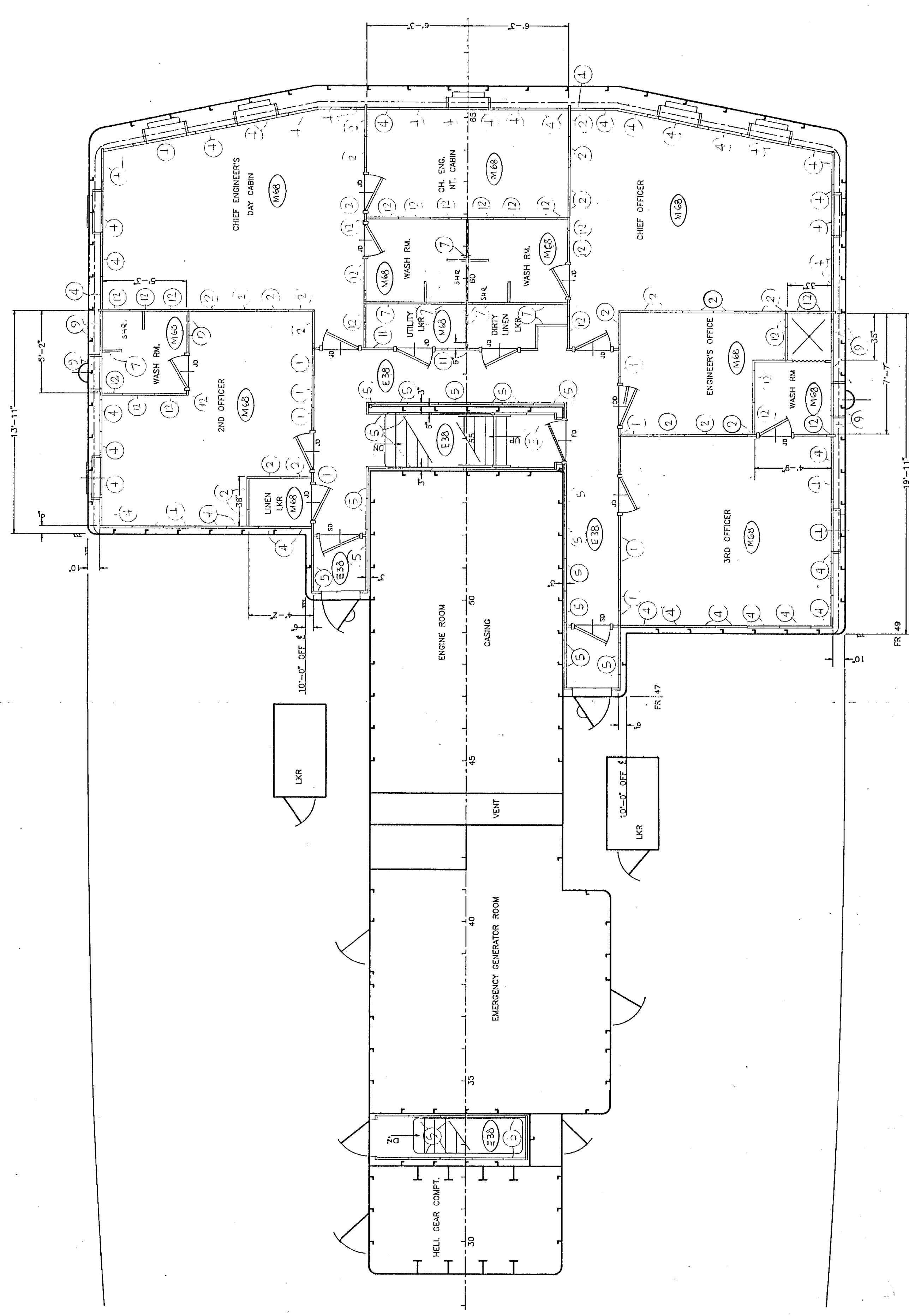


11
Inches

0 1 2 3 4 5 6 7 8 9 10 11
Centimeters



BRIDGE DECK



BOAT DECK

NAV. BRIDGE DECK

Joiner Bulkheads and Linings

No.	Part	No. Panels
1	Partition Panel PA33C502 M48 One Side E38 One Side	118
2	Partition Panel PA33C502 M48 One Side M48 One Side	156
3	Partition Panel PA33C502 E38 One Side E38 One Side	46
4	Lining Panel PA33C501 M48 One Side Galv. One Side	295
5	Lining Panel PA33C501 E38 One Side Galv. One Side	534
6	Partition Panel PA33C502W E38 Wet Side E38 Wet Side	17
7	Lining Panel PA33C501W E38 Wet Side Galv. One Side	27
8	Partition Panel PA33C502W M48 Wet Side M48 Wet Side	49
9	Lining Panel PA33C501W M48 Wet Side Galv. One Side	45
10	Partition Panel PA33C502WF E38 Wet Side E38 Dry Side	8
11	Partition Panel PA33C502WE M48 Wet Side E38 Dry Side	10
12	Partition Panel PA33C502WE M48 Wet Side M48 Dry Side	78
13	Partition Panel PA33C502WE E38 Wet Side M48 Dry Side	9
14	Lining Panel PA33C501W S.S. Wet Side Galv. Dry Side	54

This drawing is the property of Canadian Shipbuilding & Engineering Ltd. with whom its further use must be specially arranged.

REFERENCES

GENERAL NOTES

C	SHED - SHEDS MODIFIED	M.M.	17/12/94
D	PANEL LEGEND ADDED	A.B.	13 OCT 94
REV A	PANEL LEGEND ADDED	A.B.	11 OCT 94

NO.	REVISION	DATE
1	1	17/12/94

NO.	REV.	DATE	NO.	REV.	DATE
1	1	17/12/94	1	1	17/12/94
2	1	17/12/94	2	1	17/12/94
3	1	17/12/94	3	1	17/12/94
4	1	17/12/94	4	1	17/12/94
5	1	17/12/94	5	1	17/12/94
6	1	17/12/94	6	1	17/12/94
7	1	17/12/94	7	1	17/12/94
8	1	17/12/94	8	1	17/12/94
9	1	17/12/94	9	1	17/12/94
10	1	17/12/94	10	1	17/12/94
11	1	17/12/94	11	1	17/12/94
12	1	17/12/94	12	1	17/12/94
13	1	17/12/94	13	1	17/12/94
14	1	17/12/94	14	1	17/12/94
15	1	17/12/94	15	1	17/12/94
16	1	17/12/94	16	1	17/12/94
17	1	17/12/94	17	1	17/12/94
18	1	17/12/94	18	1	17/12/94
19	1	17/12/94	19	1	17/12/94
20	1	17/12/94	20	1	17/12/94
21	1	17/12/94	21	1	17/12/94
22	1	17/12/94	22	1	17/12/94
23	1	17/12/94	23	1	17/12/94
24	1	17/12/94	24	1	17/12/94
25	1	17/12/94	25	1	17/12/94
26	1	17/12/94	26	1	17/12/94
27	1	17/12/94	27	1	17/12/94
28	1	17/12/94	28	1	17/12/94
29	1	17/12/94	29	1	17/12/94
30	1	17/12/94	30	1	17/12/94
31	1	17/12/94	31	1	17/12/94
32	1	17/12/94	32	1	17/12/94
33	1	17/12/94	33	1	17/12/94
34	1	17/12/94	34	1	17/12/94
35	1	17/12/94	35	1	17/12/94
36	1	17/12/94	36	1	17/12/94
37	1	17/12/94	37	1	17/12/94
38	1	17/12/94	38	1	17/12/94
39	1	17/12/94	39	1	17/12/94
40	1	17/12/94	40	1	17/12/94
41	1	17/12/94	41	1	17/12/94
42	1	17/12/94	42	1	17/12/94
43	1	17/12/94	43	1	17/12/94
44	1	17/12/94	44	1	17/12/94
45	1	17/12/94	45	1	17/12/94
46	1	17/12/94	46	1	17/12/94
47	1	17/12/94	47	1	17/12/94
48	1	17/12/94	48	1	17/12/94
49	1	17/12/94	49	1	17/12/94
50	1	17/12/94	50	1	17/12/94
51	1	17/12/94	51	1	17/12/94
52	1	17/12/94	52	1	17/12/94
53	1	17/12/94	53	1	17/12/94
54	1	17/12/94	54	1	17/12/94
55	1	17/12/94	55	1	17/12/94
56	1	17/12/94	56	1	17/12/94
57	1	17/12/94	57	1	17/12/94
58	1	17/12/94	58	1	17/12/94
59	1	17/12/94	59	1	17/12/94
60	1	17/12/94	60	1	17/12/94
61	1	17/12/94	61	1	17/12/94
62	1	17/12/94	62	1	17/12/94
63	1	17/12/94	63	1	17/12/94
64	1	17/12/94	64	1	17/12/94
65	1	17/12/94	65	1	17/12/94
66	1	17/12/94	66	1	17/12/94
67	1	17/12/94	67	1	17/12/94
68	1	17/12/94	68	1	17/12/94
69	1	17/12/94	69	1	17/12/94
70	1	17/12/94	70	1	17/12/94
71	1	17/12/94	71	1	17/12/94
72	1	17/12/94	72	1	17/12/94
73	1	17/12/94	73	1	17/12/94
74	1	17/12/94	74	1	17/12/94
75	1	17/12/94	75	1	17/12/94
76	1	17/12/94	76	1	17/12/94
77	1	17/12/94	77	1	17/12/94
78	1	17/12/94	78	1	17/12/94
79	1	17/12/94	79	1	17/12/94
80	1	17/12/94	80	1	17/12/94
81	1	17/12/94	81	1	17/12/94
82	1	17/12/94	82	1	17/12/94
83	1	17/12/94	83	1	17/12/94
84	1	17/12/94	84	1	17/12/94
85	1	17/12/94	85	1	17/12/94
86	1	17/12/94	86	1	17/12/94
87	1	17/12/94	87	1	17/12/94
88	1	17/12/94	88	1	17/12/94
89	1	17/12/94	89	1	17/12/94
90	1	17/12/94	90	1	17/12/94
91	1	17/12/94	91	1	17/12/94
92	1	17/12/94	92	1	17/12/94
93	1	17/12/94	93	1	17/12/94
94	1	17/12/94	94	1	17/12/94
95	1	17/12/94	95	1	17/12/94
96	1	17/12/94	96	1	17/12/94
97	1	17/12/94	97	1	17/12/94
98	1	17/12/94	98	1	17/12/94
99	1	17/12/94	99	1	17/12/94
100	1	17/12/94	100	1	17/12/94

CSE Marine Services Inc.

Canadian Coast Guard
Garde côtière
canadienne

C.C.G.S. GRIFFON
BOAT, BRIDGE AND NAV. BRIDGE DECK
- JOINER BULKHEADS AND LININGS.

APPR.	SENT	APPR.	SENT	APPR.	SENT	DRAWN BY	H. SURTEES
OWNER		CHECKED BY	A. J. J.				
LOYDS		DATE	15 th AUG. 1994				
A.B.S.		REVISION NO.					
S.S.B.		Scale	1/4" = 1'-0"	Account no.			

DRG. NO. 732931
Sheet 1 of 1