

### **ADDENDUM NO. 3**

Photographs, Drawing and Detail Sheets and Specification Sections issued with this Addendum:

**Photographs Issued:**

Photographs No. 1 to 12 dated 2017-09-06 attached showing existing conditions.

**Specification Revisions:**

1.1 Section 08 71 00 Door Hardware Refer to paragraph 2.02.2.1 Automatic Door Operators. Revise to read as follows:

2. **AUTOMATIC DOOR OPERATORS**

1. Surface mounted ADO - Low Energy handicap operators.
2. Applicable standards: ANSI/ BHMA A156.19
3. ADO shall have the ability to operate the door via a proximity card reader with built-in interface module.
4. Install an ADO button on a stand-alone post to activate a set pair of doors.
5. ADO actuator shall be 114mm x 114mm minimum dimension, stainless steel material, with the international symbol of accessibility displayed blue in colour.
6. The maximum total open time for a door shall be 13 seconds of which a maximum of 10 seconds being held in the fully open position in accordance with ANSI/BHMA A156.19.  
1) Specified Manufacturer: Besam SW200i, Hunter HA-8 LP, Horton Automatics series 4100LE

**Electrical Drawing Revisions**

1.2 E6.1 ELECTRICAL SCHEDULES Lighting Fixture Schedule:

Refer to attached Epp Siepman Addendum 2E dated 17-09-11 for approved equals.

**END OF ADDENDUM**

# Addendum No. 2E

Date: 17-09-11  
To: Architecture 49  
Attention: John Crocker  
From: Mike Lee  
Cc:

**Project: RCMP Asset Management**  
**Subject: Stonewall - Request for Equals**

---

Addendum forms part of the Contract Documents and modifies the Bidding Documents dated 2017-05-12, previous Addenda numbered as 1E and previously issued, with amendments and additions noted below. Where inconsistent with the drawings and specification, this Addendum shall govern. The same conditions of Contract and General Requirements shall apply to this Addendum as to the original drawings and specifications. Bidders are to review the entire Addendum to confirm all work affecting their Section.

Acknowledge receipt of this Addendum in the space provided in the Bid Form. Failure to do so may disqualify the Bidder at the Owner's discretion.

---

## Electrical:

### Substitutions:

Products listed are approved but must comply with Specification Section 260500 - Common Work for Electrical:

1. **EXT01**
  - a. Kenall MS11FL-PP-MW-10L40K-DV
2. **EXT02**
  - a. COOPER GWC-AF01-LED-E1-T3-BZ
  - b. Philips-Gardco 121-32L-530-NW-G3-3-UNV-BZ
3. **RL02**
  - a. COOPER 22CZ-LD5-34-UNV-L840-CD1-U
  - b. Focal Point FMA2-22-ACR-3000L-40K-1C-UNV-LD1-G-WH
4. **RL03**
  - a. COOPER 24CZ-LD5-60-UNV-L840-CD1-U
  - b. Focal Point FMA2-24-ACR-6000L-40K-1C-UNV-LD1-G-WH
5. **RL05**
  - a. RENESOLA RA60D010X0111
6. **SL01**
  - a. RENESOLA RA60D010X0111
7. **SL02**
  - a. BJTAKE BLSPI-4-3.5L-840-UNV
  - b. Philips-CFI FSS430840L-UNV-DIM

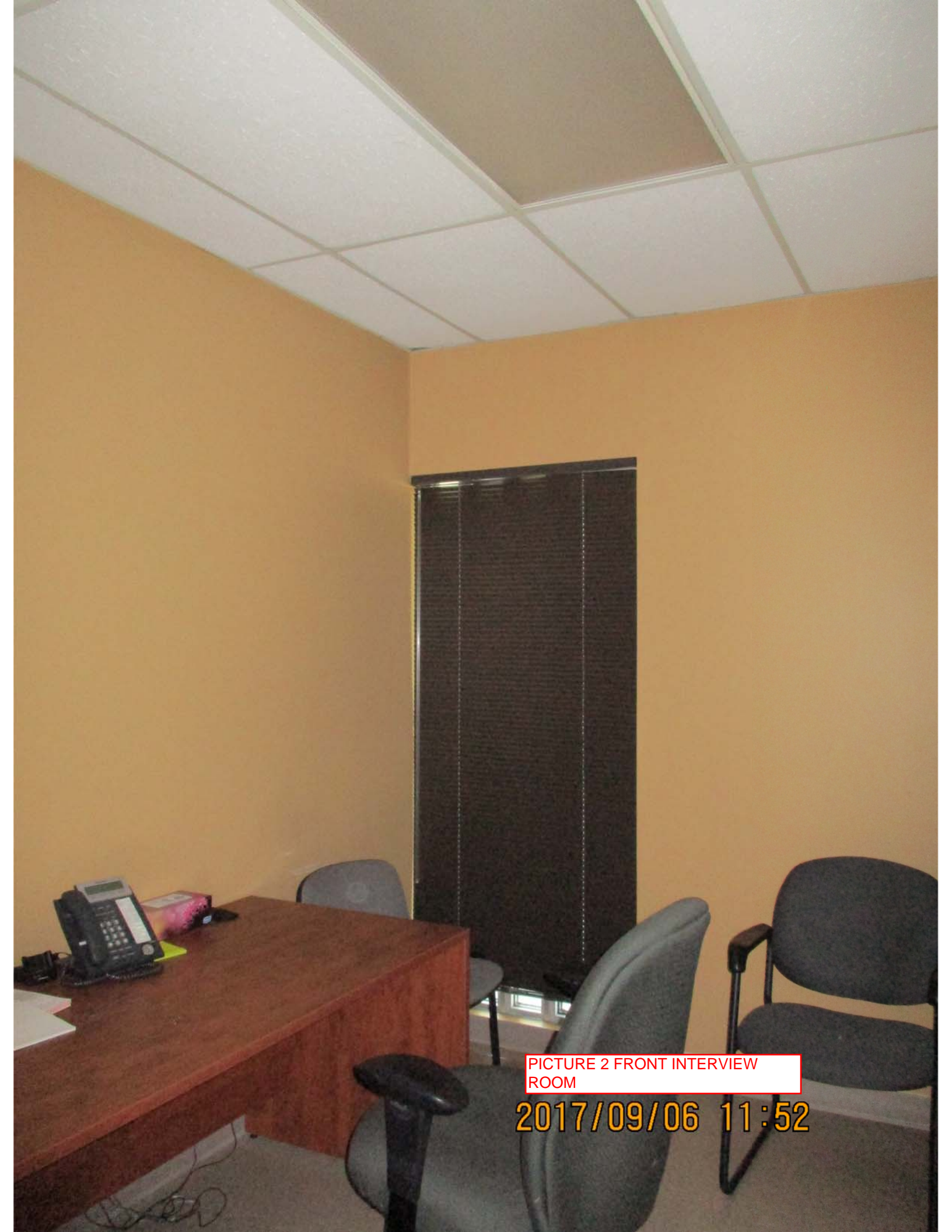
8. **SL03**
  - a. COOPER SLD606840WH
  - b. Philips-LOL S7R840K10
9. **SL06**
  - a. COOPER 22CZ-LD5-34-UNV-L840-CD1-U C/W SK22WS
  - b. Focal Point FMA2-22-ACR-3000L-40K-1C-UNV-LD1-SM-WH
10. **SL08**
  - a. COOPER 4WNLED-LD4-50SL-F-UNV-L840- CD1-U
  - b. Philips-CFI OWL450L840-UNV-DIM
11. **SL09**
  - a. COOPER LD4B-15D010-EU4B1020-840- 4LBM2H
  - b. Philips-LOL P4RD15NZ10UVB // P4RD840VB // P4RDCCP
12. **SL10**
  - a. COOPER LD6B15D010-EU6B10208040
  - b. Philips-LOL P6RD15NZ10UVB // P6RD840VB // P6RDCCP
13. **WL01**
  - a. COOPER FCC-5-4-LD4-2-STD-40-UNV- 80/84-EDC1-LLNL
  - b. Kenall CD-4-0/0-45L40K-DCC-DV-1/G-DLN
14. **WL02**
  - a. COOPER 2SWLED-LD4-20SL-LW-UNV-L840-CD1-U
  - b. Philips-CFI FSW220L840-UNV-DIM
15. **OS1**
  - a. COOPER OSW-P-010
  - b. Leviton OSSMT-G
16. **OS2**
  - a. COOPER ONW-D-1001-MV-W
  - b. Leviton 06C20-MDW // PLVSW-4LW // OPP20-OD1
17. **OS3**
  - a. COOPER OAC-U-2000-R-C/W SP20 MV
  - b. Leviton OSC10-MDW



PICTURE 1  
EXTERIOR OF GYM

2017/09/06 11:54





PICTURE 2 FRONT INTERVIEW ROOM

2017/09/06 11:52

A PERSON ARRESTED OR  
DETAINED HAS THE RIGHT  
TO RETAIN AND INSTRUCT  
COUNSEL, WITHOUT DELAY.

TOUTE PERSONNE ARRÊTÉE  
A LE DROIT DE FAIRE  
IMMÉDIATEMENT APPEL À  
UN CONSEILLER JURIDIQUE.

IF YOU CANNOT AFFORD IT,  
LEGAL AID DUTY COUNSEL  
IS AVAILABLE TO PROVIDE  
LEGAL ADVICE AND  
PROCESS AN APPLICATION  
WITHOUT CHARGE.

SI VOUS NE POUVEZ PAS  
LES MOYENS, UN AVOCAT  
DE L'AIDE JURIDIQUE PEUT  
VOUS CONSEILLER ET  
POURRA REMPLIR UNE  
DEMANDE SANS FRAIS.

PICTURE 3 MONITOR ROOM

2017/09/06 11:52





2017/09/06 11:53

PICTURE 4 MONITOR ROOM





2017/09/06 11:48

PICTURE 5  
PENTHOUSE HVAC





2017/09/06 11:46

PICTURE 6  
PENTHOUSE HVAC





2017/09/06 11:47

PICTURE 7  
PENTHOUSE HVAC





PICTURE 8  
ENTRANCE  
2017-09-06



PICTURE 9  
ENTRANCE  
2017-09-06





PICTURE 10  
ENTRANCE SECURITY SCREEN  
FROM ENTRY VESTIBULE  
2017-09-06



PICTURE 11  
ENTRANCE SECURITY SREEN  
FROM PUBLIC RECEPTION 102 SIDE  
2017-09-06





PICTURE 12  
ENTRANCE  
VESTIBULE 101  
2017-09-06