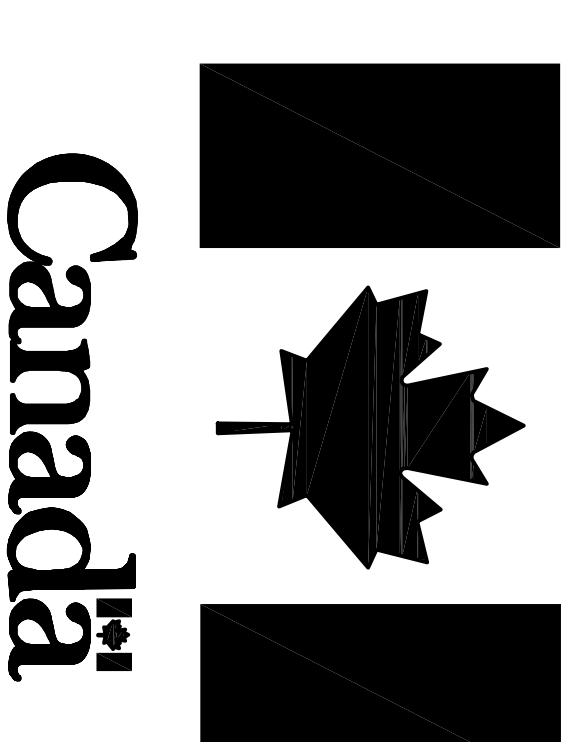


# FISHERIES AND OCEANS



## REMOVAL OF VARIOUS SURPLUS INFRASTRUCTURE AT THE GULL ISLAND LIGHT STATION GULL ISLAND, NL

PROJECT NO.: F6879-171008  
ISSUED FOR REVIEW

DATE: JULY 12, 2017

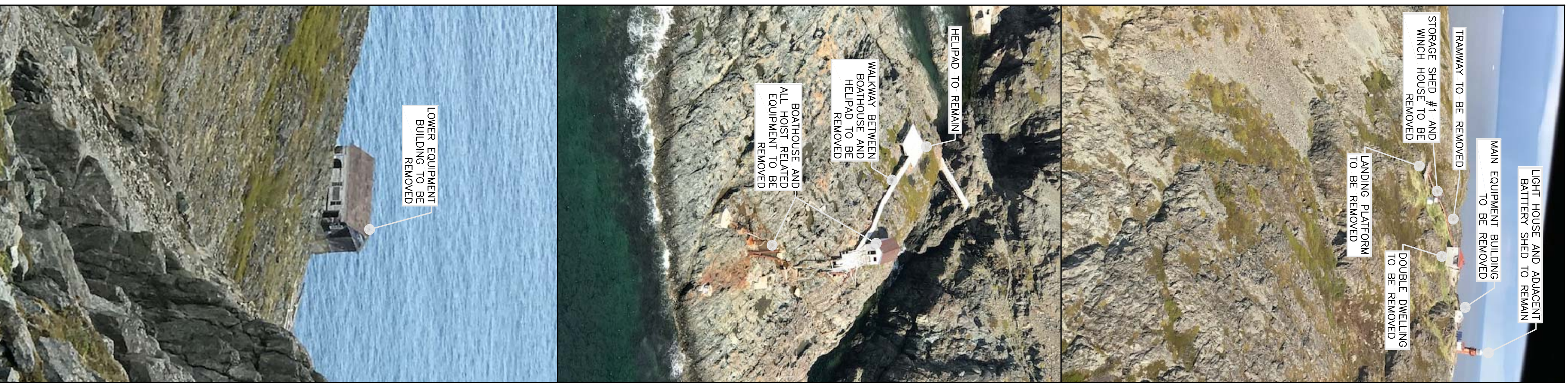
CLIENT/OWNER:  
DEPARTMENT OF FISHERIES & OCEANS,  
REAL PROPERTY, SAFETY & SECURITY

PRIME CONSULTANT:  
AFN ENGINEERING INC.

### DRAWING LIST:

02E1401A016C01	SITE PLAN
02E1401A016C02	PLANS – DOUBLE DWELLING
02E1401A016C03	ELEVATIONS – DOUBLE DWELLING
02E1401A016C04	PLANS – MAIN EQUIPMENT BUILDING AND LOWER EQUIPMENT BUILDING
02E1401A016C05	PLANS – BOATHOUSE AND STORAGE SHED #2
02E1401A016C06	PLANS – WINCH HOUSE AND STORAGE SHED #1





**Fisheries and Oceans**  
Pêches et Océans

**Safety & Security**  
Protection et sécurité

Province of Newfoundland  
Permit Holder  
This Permit Allows  
APN ENGINEERING INC.  
to conduct Professional Engineering in Newfoundland and Labrador from July 12, 2017 to July 12, 2018 which is valid for the year 2017-2018.

REGISTERED PROFESSIONAL ENGINEER  
MILL C. HUNT  
APN ENGINEERING INC.  
NEWFOUNDLAND

**SITE LOCATION**

A	ISSUED FOR TENDER	7/12/17	P.H.	N.H.
no.	revision	date	by	approved
no.	revision	date	by	approved

Project - project removal of various surplus infrastructure at Gull Island Light Station Gull Island, NL

Drawing - design

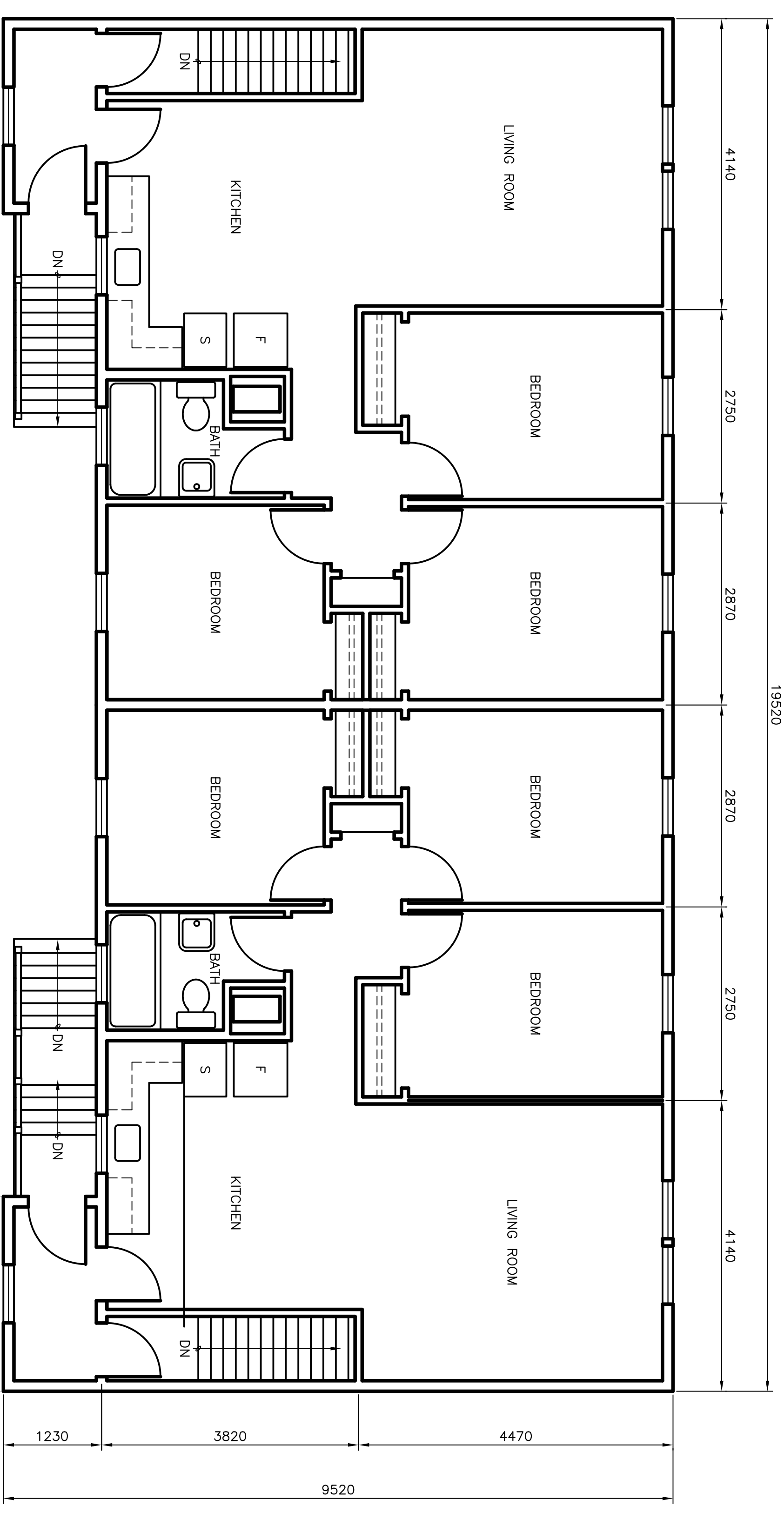
### SITE PLAN

drawn - dessiné	P.H.	designed - dessiné par	N.H.
date - date	JULY 12, 2017	checked - vérifié	N.H.
scale - échelle	N.T.S.	approved for tender - approuvé pour l'offre	
project no. - projet no.	drawing no. - no. du dessin	sheet - feuille	
FS9379-171008	02E14Q1A01B001	C01	

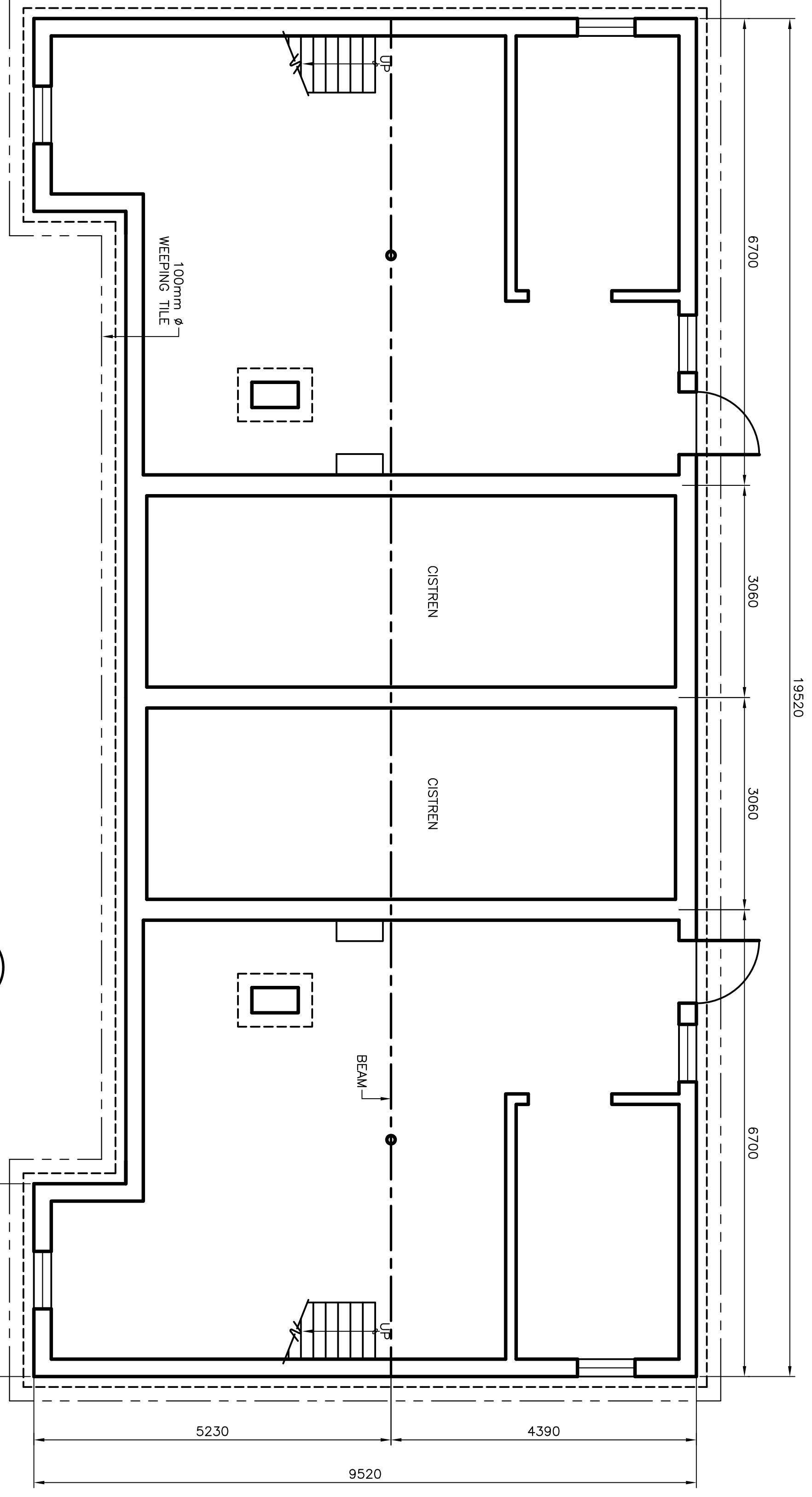




- NOTES:**
- DIMENSIONS SHOWN ARE TO BE CONSIDERED APPROXIMATE. DIMENSIONS SHOWN IN PARENTHESES DURING THE SITE VISIT AND CORRECTIONS ACCORDING TO THE ACTUAL CONDITIONS. COSTS ACCORDING TO THE ACTUAL CONDITIONS.
  - LAYOUTS, ELEVATIONS AND PLANS ARE SHOWN FOR GENERAL ILLUSTRATION PURPOSES ONLY. EXPECT ACTUAL SITE CONDITIONS TO VARY.
  - REFER TO THE HAZARDOUS MATERIAL SAMPLING REPORT (APPENDED TO THE SPECIFICATIONS) FOR QUANTITIES OF KNOWN OR SUSPECTED HAZARDOUS BUILDING MATERIALS. FOR THE PURPOSES OF THIS CONTRACT THE FOLLOWING HAZARDOUS MATERIALS ARE TO BE REMOVED AND DISPOSED OF AS PART OF THE DEMOLITION ACTIVITIES:
    - DRYWALL INCLUDING JOINT COMPOUND ON THE INTERIOR WALLS AND CEILING; CONTAINS ASBESTOS AND IS TO BE DISPOSED OF IN ACCORDANCE WITH THE NL ASBESTOS ABATEMENT REGULATIONS; ROOFING SHINGLES, UNDERLAYING TAR MATERIAL, INSULATION, GYPSUM BOARD, CEILING BOARD/SOUND (TRANSLUCENT) BOARD, FLOORING IS ALSO TO BE CONSIDERED ASBESTOS. CONTRACTORS TO PROVIDE EVIDENCE THAT THEY ARE REGISTERED WITH SERVICE NL AS AN ASBESTOS ABATEMENT CONTRACTOR.
    - LEACHABLE LEAD BASED PAINT IS PRESENT ON ALL INTERIOR AND EXTERIOR SURFACES. LEACHABLE LEAD BASED PAINT IS CONSIDERED HAZARDOUS FOR THE PURPOSES OF THIS CONTRACT. CONTRACTORS TO REMOVE ALL LEACHABLE LEAD BASED PAINT FROM SURFACES IS TO BE DRAINED-UP AND DISPOSED OF AS HAZARDOUS WASTE. WHERE PAINT IS NOT FLAKING/PEELING FROM CONSTRUCTION MATERIALS, THE MATERIAL CAN BE DISPOSED OF AT ONE OF THE REGIONAL SOLID WASTE DISPOSAL SITES, SUCH AS ROBIN HOOD BAY. WITH RESPECT TO THE EXTERIOR WOOD SIDING, THE PAINT AND SUBSTRATE IS TO BE REMOVED AND DISPOSED OF AS HAZARDOUS WASTE. CONTRACTORS TO PROVIDE EVIDENCE THAT THEY ARE REGISTERED WITH SERVICE NL AS AN ASBESTOS ABATEMENT CONTRACTOR.
    - CONCRETE FOUNDATIONS AND FLOOR SLABS WHICH ARE TO REMAIN, THE PAINT IS TO BE REMOVED FROM THE CONCRETE SURFACES AND DISPOSED OF AS HAZARDOUS LEAD WASTE. ALL THERMOSTATS AND FLUORESCENT LIGHT TUBES POTENTIALLY CONTAIN MERCURY AND ARE TO BE RECYCLED OR DISPOSED OF AT AN APPROVED FACILITY.
    - FLUORESCENT LIGHT BALLASTS ARE TO PLACED IN STEEL CONTAINERS, TRANSPORTED AS HAZARDOUS WASTE AND DISPOSED OF AS PCBs.
    - MOLD IS PRESENT THROUGHOUT THE INTERIOR SURFACES OF THE INFRASTRUCTURE AND IS TO BE REMOVED AND DISPOSED OF AS PCBs.
    - WATER PIPES, DRAINAGE PIPES, CONTAIN LEAD SOLDER AND ARE TO BE REMOVED AND DISPOSED OF AS HAZARDOUS WASTE.
    - WATER PIPES, DRAINAGE PIPES, CONTAIN LEAD SOLDER AND ARE TO BE REMOVED AND DISPOSED OF AS HAZARDOUS WASTE.
    - RESPONDING TYPE REFRIGERATORS AND REFRIGERATORS ARE TO BE REMOVED OF AT A LICENSED FACILITY CAPABLE OF ACCEPTING OZONE DEPLETING SUBSTANCES.
    - FIRE EXTINGUISHERS ARE TO BE DISPOSED OF AS HOUSEHOLD HAZARDOUS WASTE.
    - SMOKE ALARMS POTENTIALLY CONTAINING RADIOACTIVE MATERIALS, TO BE TRANSPORTED AS DANGEROUS GOODS AND DISPOSED OF AT A LICENSED DISPOSAL FACILITY.
    - IN THE ABSENCE OF SAMPLING, ALL TREATED TIMBER (CREOSOTE AND COA TIMBER) IS TO BE DISPOSED OF AS HAZARDOUS WASTE. THE DEPARTMENTAL REPRESENTATIVE WILL PERMIT DISPOSAL OF TREATED TIMBER AT ONE OF THE REGIONAL SOLID WASTE DISPOSAL SITES, SUCH AS ROBIN HOOD BAY, PROVIDED THE CONTRACTOR CHOOSES TO SWAPLE THE TREATED TIMBER TO ONE OF THE REGIONAL SOLID WASTE DISPOSAL SITES WITHIN THE APPLICABLE LEACHABILITY GUIDELINES FOR CREOSOTE AND METALS COMPOUNDS.
    - METAL WASTE AND OTHER DEBRIS, INCLUDING BUT NOT LIMITED TO ELECTRICAL AND MECHANICAL EQUIPMENT, TANKS, PRESSURE VESSELS, CABLES, PIPES, TIRES, WOOD, ETC. ARE SCATTERED AT VARIOUS LOCATIONS THROUGHOUT THE SITE. TAKE SITE INVENTORY OF THESE MATERIALS AT THE PRE-TENDER SITE VISIT AND OBTAIN DISPOSAL COSTS IN BID.



**PLAN - MAIN FLOOR**  
SCALE: 1:50  
2/2



**PLAN - BASEMENT**  
SCALE: 1:50  
2/2

A	no.	ISSUED FOR TENDER	revision	date	P.H.	N.H.
				7/12/17		

Project - project removal of various surplus infrastructure at Gull Island Light Station Gull Island, NL

PLANS - DOUBLE DWELLING

drawn - dessine P.H.  
date - date JULY 12, 2017  
scale - echelle N.T.S.  
project no. - projet no. 02E1401A01B002  
drawing no. - no. du dessin 02E1401A01B002

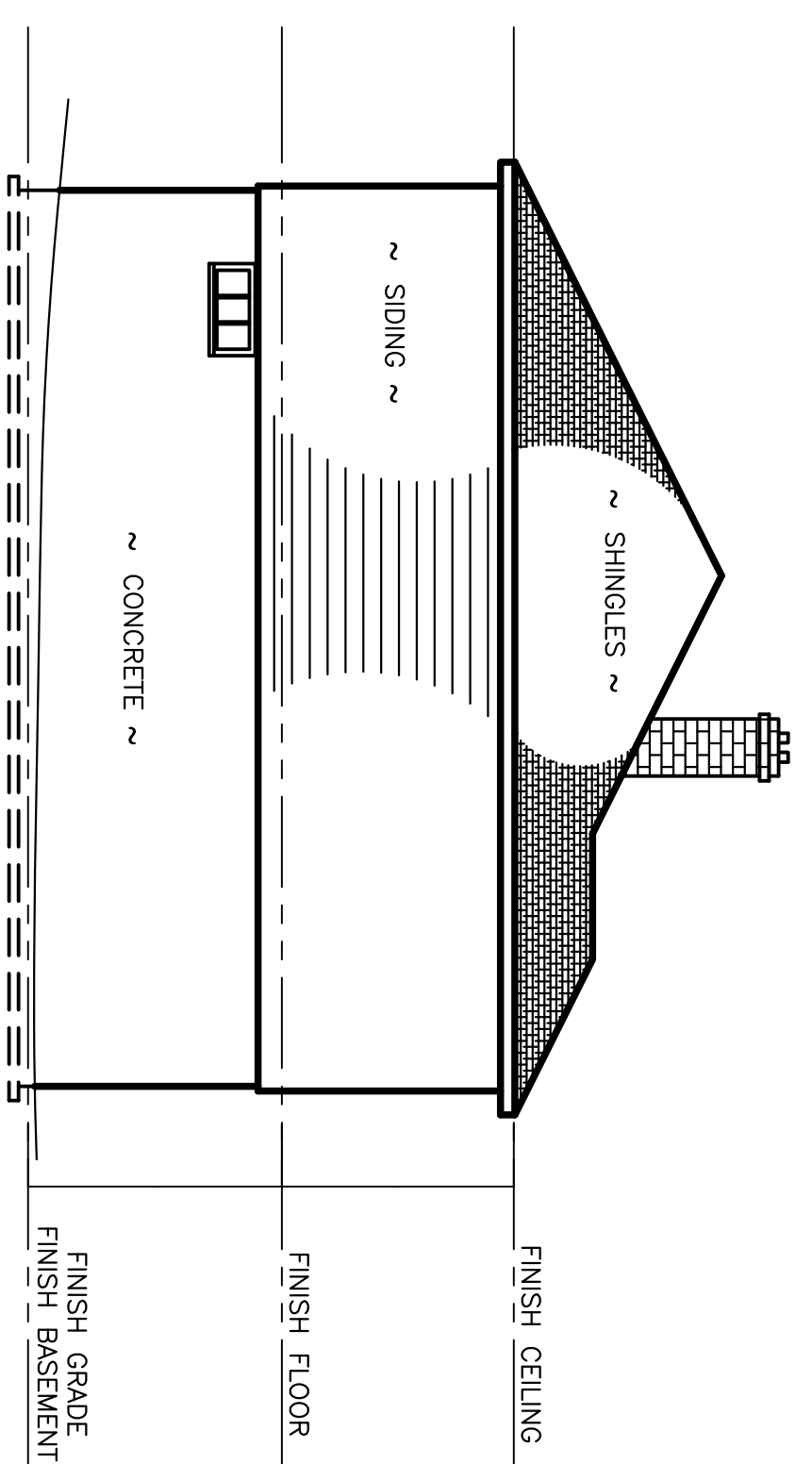
no.	by	approved	date	P.H.	N.H.

designated - dessine par  
checked - vérifié N.H.  
approved for tender - approuvé pour l'offre  
sheet - feuille 002



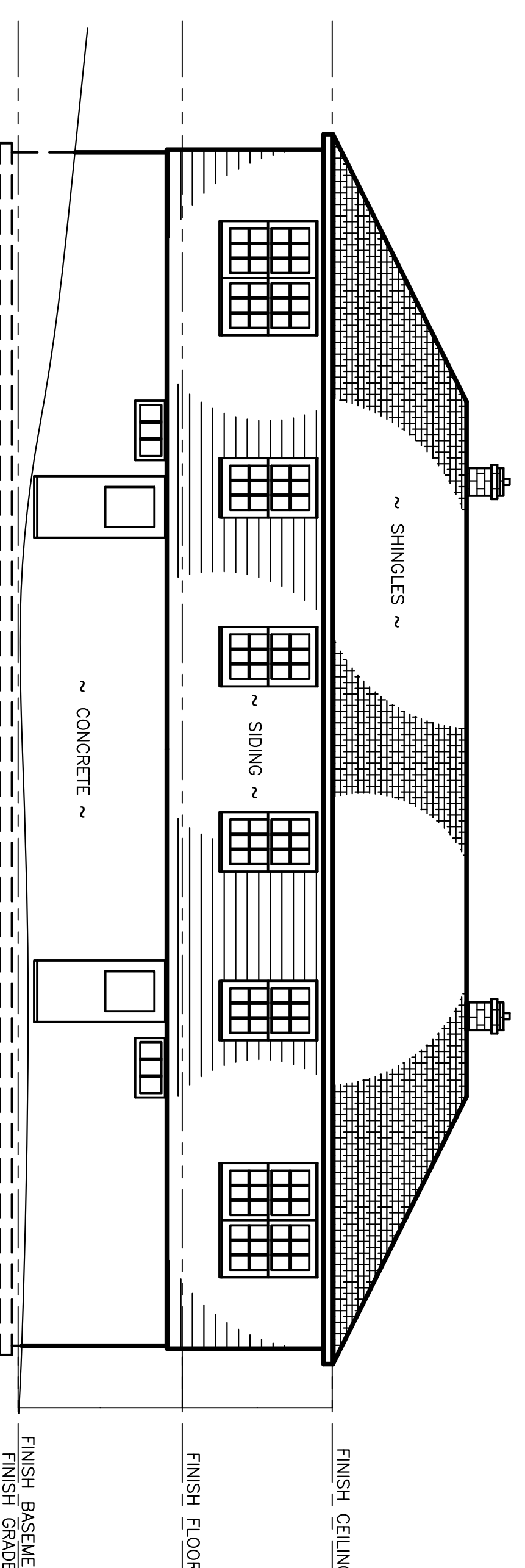
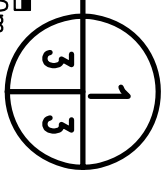
NOTES:

- DIMENSIONS SHOWN ARE TO BE CONSIDERED APPROXIMATE. CONFIRM ALL CRITICAL DIMENSIONS DURING THE SITE VISIT AND CARRY COSTS ACCORDINGLY.
- LAYOUTS, ELEVATIONS AND PLANS ARE SHOWN FOR GENERALLY ILLUSTRATION PURPOSES ONLY. EXPECT ACTUAL SITE CONDITIONS TO VARY.
- REFER TO THE HAZARDOUS MATERIAL SAMPLING REPORT (APPENDED TO THE SPECIFICATIONS), FOR QUANTITIES OF KNOWN OR SUSPECTED HAZARDOUS BUILDING MATERIALS. FOR THE PURPOSES OF THIS CONTRACT, THE FOLLOWING HAZARDOUS MATERIALS ARE TO BE REMOVED AND DISPOSED OF AS PART OF THE DEMOLITION ACTIVITIES:
  - PERMAL, INCLUDING JOINT COMPOUND ON THE INTERIOR WALLS AND CEILINGS CONTAINS ASBESTOS AND IS TO BE DISPOSED OF IN ACCORDANCE WITH THE NL ASBESTOS ABATEMENT REGULATIONS. ROOFING SHINGLES, UNDERLIERING TAR MATERIAL, MASTIC MATERIAL, AT ROOFING PENETRATIONS, HEAT SHIELDS ON FURNACES/STOVES, CEMENT BOARD/SIDING (TRANSITE), CAULKING AND VINYL FLOORING IS ALSO TO BE CONSIDERED ASBESTOS. CONTRACTORS TO PROVIDE EVIDENCE THAT THEY ARE REGISTERED WITH SERVICE NL AS AN ASBESTOS ABATEMENT CONTRACTOR.
  - DISPOSAL. LOOSE, FLAKING PAINT FROM SURFACES IS TO BE DEWATERED-UP AND DISPOSED OF AS HAZARDOUS WASTE. LEACHABLE LEAD BASED PAINT IS CONSIDERED HAZARDOUS FOR THE PURPOSES OF TRANSPORTATION AND THE MATERIAL CAN BE DISPOSED OF AT ONE OF THE REGIONAL SOLID WASTE DISPOSAL SITES, SUCH AS ROBIN HOOD BAY. WHERE PAINT IS NOT FLAKING/PEELING FROM CONSTRUCTION MATERIALS, SUBSTRATE (I.E. SIDING WITH THE PAINT ADHERED TO IT), IS TO BE CONSIDERED HAZARDOUS LEAD WASTE. WITH RESPECT TO THE EXTERIOR WOOD SIDING, THE PAINT AND THE PAINT IS TO BE REMOVED FROM THE CONCRETE SURFACES AND DISPOSED OF AS HAZARDOUS LEAD WASTE.
  - ALL THERMOSTATS AND FLUORESCENT LIGHT TUBES POTENTIALLY CONTAIN MERCURY AND ARE TO BE RECYCLED OR DISPOSED OF AT AN APPROVED FACILITY.
  - FLOURESCENT LIGHT BALLASTS ARE TO BE PLACED IN STEEL CONTAINERS, TRANSPORTED AS HAZARDOUS WASTE AND DISPOSED OF AS PCBs.
  - MOULD IS PRESENT THROUGHOUT THE INTERIOR SURFACES OF THE INFRASTRUCTURE. WORKERS TO DON PPE WHEN WORKING ON THE BUILDING INTERIOR.
  - WATER PIPES POTENTIALLY CONTAIN LEAD SOLDER AND ARE TO BE DISPOSED OF AT A WASTE FACILITY CAPABLE OF ACCEPTING OZONE DEPLETING SUBSTANCES.
  - RESIDENTIAL TYPE REFRIGERATORS AND FREEZERS ARE TO BE DISPOSED OF AT A WASTE FACILITY CAPABLE OF ACCEPTING OZONE DEPLETING SUBSTANCES.
  - FIRE EXTINGUISHERS ARE TO BE DISPOSED OF AS HOUSEHOLD HAZARDOUS WASTE.
  - SMOKE ALARMS POTENTIALLY CONTAINING RADIOACTIVE MATERIALS, TO BE TRANSPORTED AS DANGEROUS GOODS AND DISPOSED OF AT A LICENSED DISPOSAL FACILITY.
  - IN THE ABSENCE OF SAMPLING, ALL TREATED TIMBER (CREOSOTE AND COA TIMBER) IS TO BE DISPOSED OF AS HAZARDOUS WASTE. THE DEPARTMENTAL REPRESENTATIVE WILL PERMIT DISPOSAL OF TREATED TIMBER AT ONE OF THE REGIONAL SOLID WASTE DISPOSAL SITES, SUCH AS ROBIN HOOD BAY, IF THE CONTRACTOR CHOOSES TO SAMPLE THE WOOD FOR LEACHABILITY (AT THE CONTRACTORS COST) AND THE RESULTS ARE WITHIN THE APPLICABLE LEACHABILITY GUIDELINES FOR CREOSOTE AND METALS COMPOUNDS.
  - METAL WASTE AND OTHER DEBRIS, INCLUDING BUT NOT LIMITED TO ELECTRICAL AND MECHANICAL EQUIPMENT, TANKS, PRESSURE VESSELS, CABLES, PIPES, TIRES, WOOD, ETC. ARE SCATTERED AT VARIOUS LOCATIONS THROUGHOUT THE SITE. TAKE INVENTORY OF THESE MATERIALS AT THE PRE-TENDER SITE VISIT AND CARRY DISPOSAL COSTS IN BID.



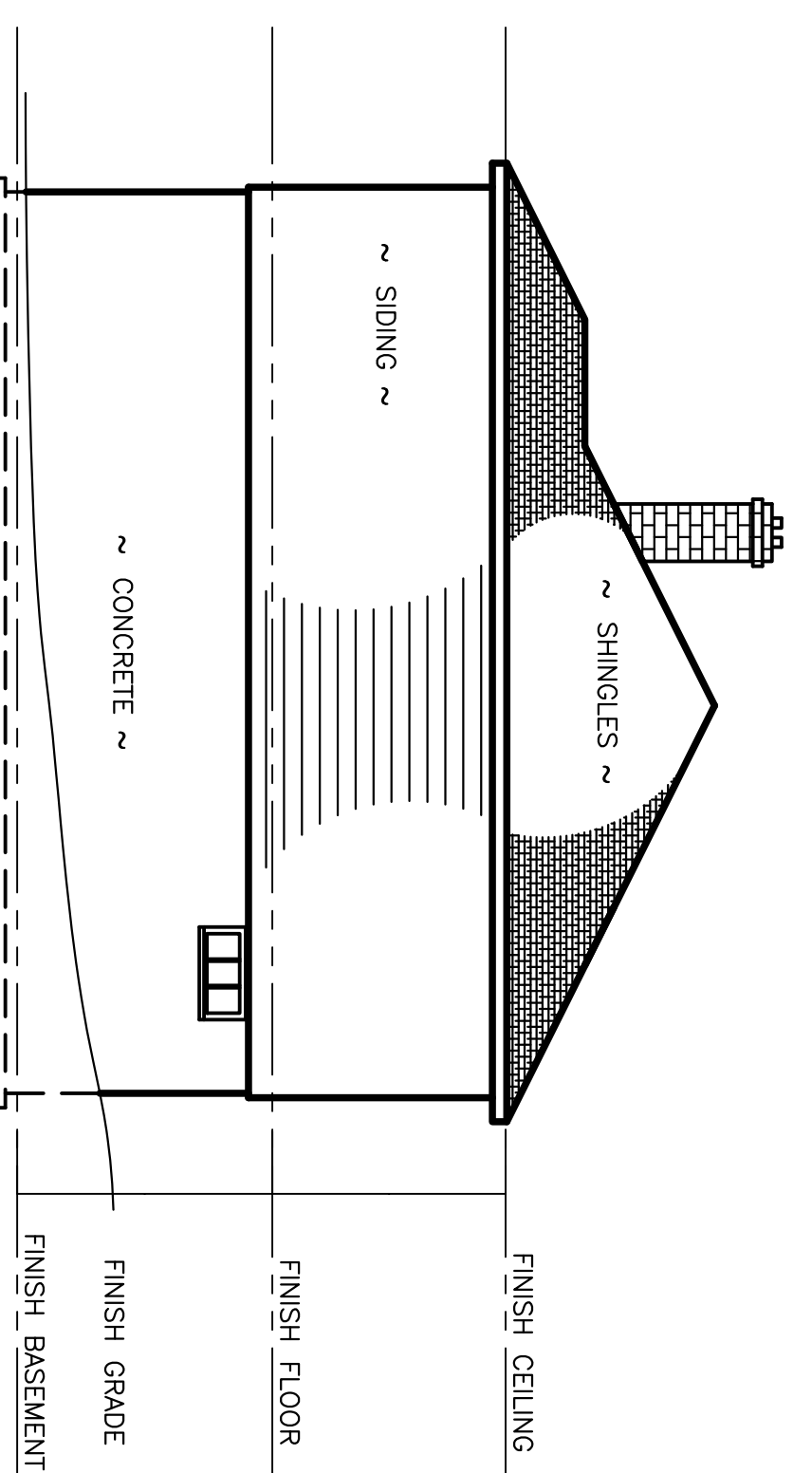
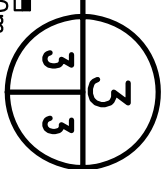
ELEVATION - SOUTH

SCALE : 1:75



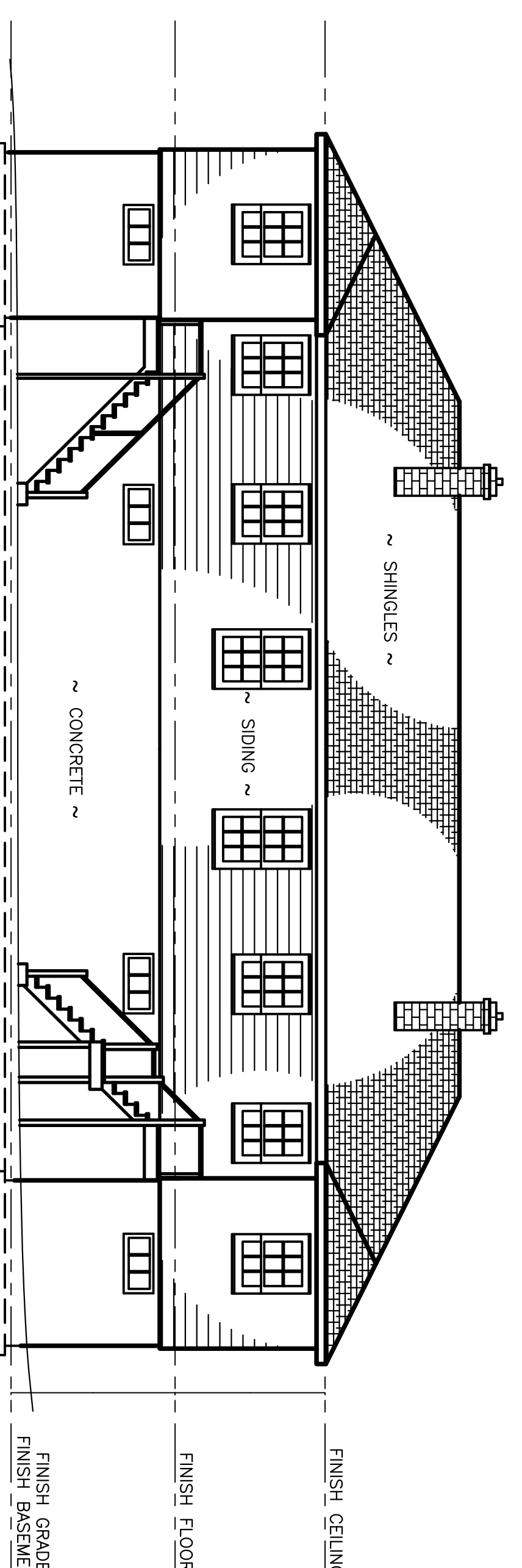
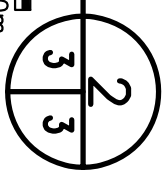
ELEVATION - WEST

SCALE : 1:75



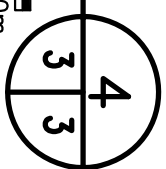
ELEVATION - NORTH

SCALE : 1:75



ELEVATION - EAST

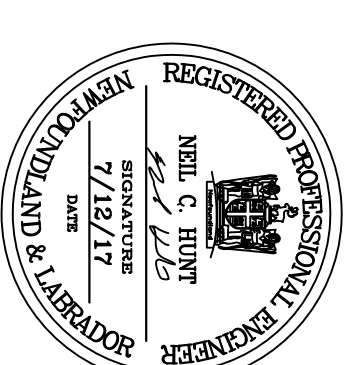
SCALE : 1:75



Fisheries and Oceans  
Pêches et Océans  
Red Property, Safety & Security  
Biens immobiliers, protection et sécurité

PROVINCE OF NEWFOUNDLAND  
Permit Holder  
The Permit Allows  
APN ENGINEERING, INC.

To practice Professional Engineering in Newfoundland and Labrador, you must be registered with the Engineering Council of Newfoundland and Labrador. This permit is valid for the term 2017-2020.



Project - project name  
REMOVAL OF VARIOUS SURPLUS INFRASTRUCTURE AT GULL ISLAND, NL

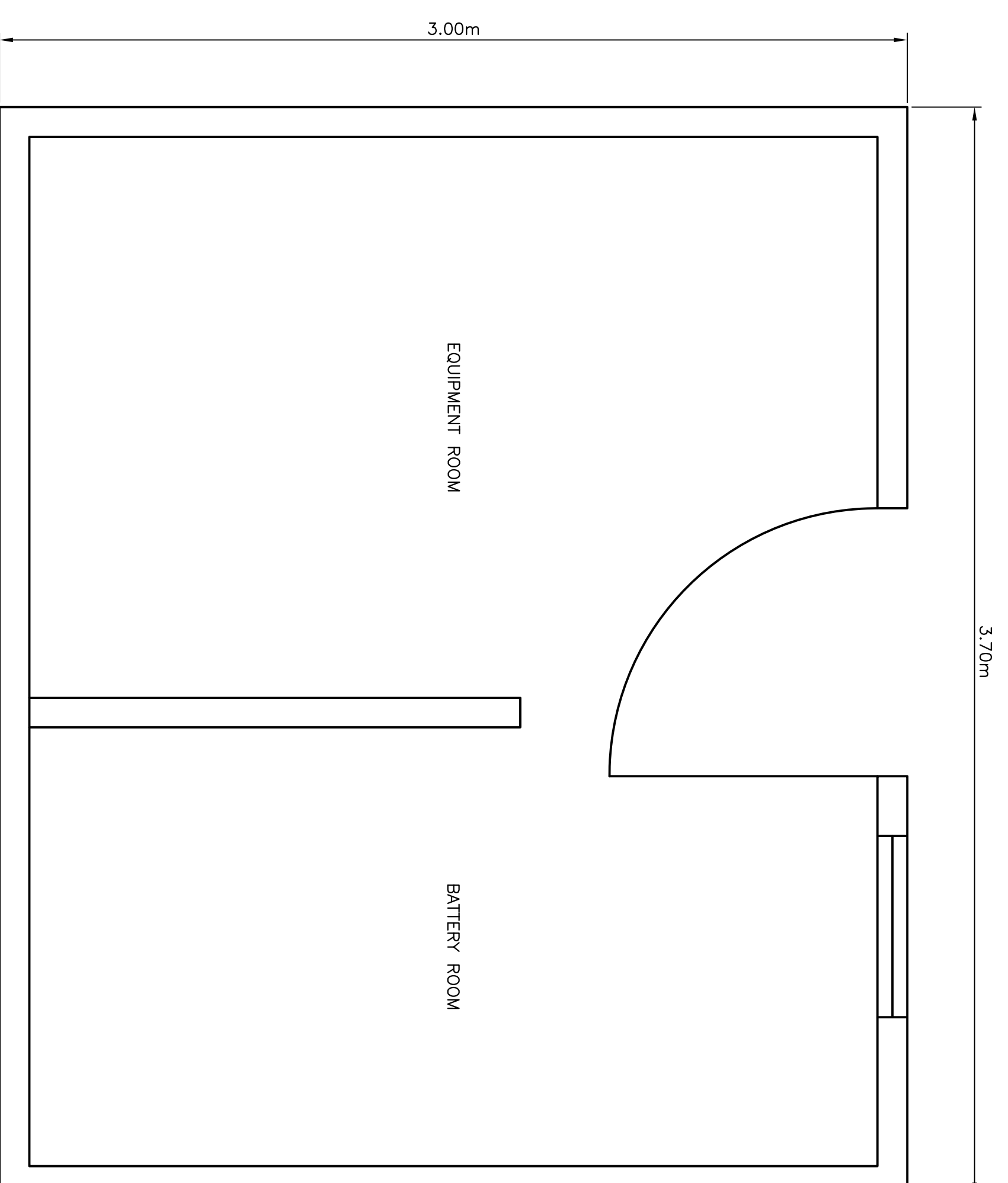
Drawing - dessin

ELEVATIONS - DOUBLE DWELLING

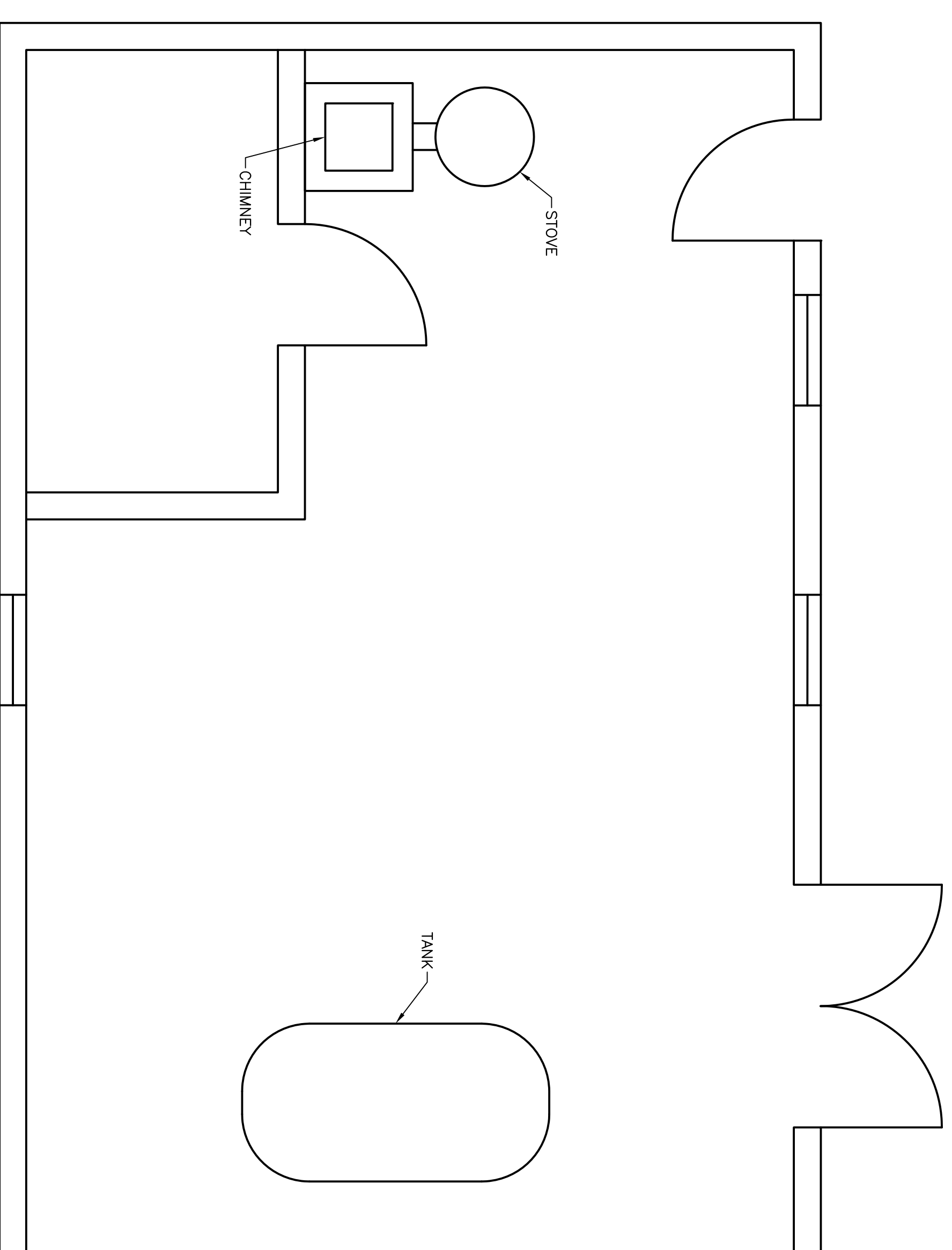
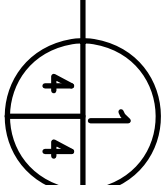
drawn - dessiné	P.H.	designed - dessiné par	N.H.
date - date	JULY 12, 2017	checked - vérifié	N.H.
scale - échelle	N.T.S.	approved for tender - approuvé pour l'offre	
project no. - projet no.	62E1401A01B003	sheet - feuille	003
drawing no. - no. du dessin	62E1401A01B003		



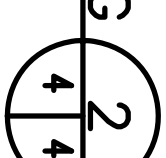
- NOTES:**
- DIMENSIONS SHOWN ARE TO BE CONSIDERED APPROXIMATE. CONFIRM ALL CRITICAL DIMENSIONS DURING THE SITE VISIT AND CARRY COSTS ACCORDINGLY.
  - LAYOUTS, ELEVATIONS AND PLANS ARE SHOWN FOR GENERALLY ILLUSTRATION PURPOSES ONLY. EXPECT ACTUAL SITE CONDITIONS TO VARY.
  - REFER TO THE HAZARDOUS MATERIAL SAMPLING REPORT (APPENDED TO THE SPECIFICATIONS), FOR QUANTITIES OF KNOWN OR SUSPECTED HAZARDOUS BUILDING MATERIALS. FOR THE PURPOSES OF THIS CONTRACT, THE FOLLOWING HAZARDOUS MATERIALS ARE TO BE REMOVED AND DISPOSED OF AS PART OF THE DEMOLITION ACTIVITIES:
    - PERMANENT, INCLUDING JOINT COMPOUND ON THE INTERIOR WALLS AND CEILINGS CONTAINS ASBESTOS AND IS TO BE DISPOSED OF IN ACCORDANCE WITH THE NL ASBESTOS ABATEMENT REGULATIONS. ROOFING SHINGLES, UNDERLAYING TAR MATERIAL, MASTIC MATERIAL, AT ROOFING PENETRATIONS, HEAT SHIELDS ON FURNACES/STOVES, CEMENT BOARD/SIDING (TRANSITE), CAULKING AND VINYL FLOORING IS ALSO TO BE CONSIDERED ASBESTOS. CONTRACTORS TO PROVIDE EVIDENCE THAT THEY ARE REGISTERED WITH SERVICE NL AS AN ASBESTOS ABATEMENT CONTRACTOR.
    - LEACHABLE LEAD BASED PAINT IS PRESENT ON ALL INTERIOR AND EXTERIOR SURFACES. LEACHABLE LEAD BASED PAINT IS CONSIDERED HAZARDOUS FOR THE PURPOSES OF TRANSPORTATION AND DISPOSAL. LOOSE, FLAKING PAINT FROM SURFACES IS TO BE DEWAXED-UP AND DISPOSED OF AS HAZARDOUS WASTE. WHERE PAINT IS NOT FLAKING/PEELING FROM CONSTRUCTION MATERIALS, THE MATERIAL CAN BE DISPOSED OF AT ONE OF THE REGIONAL SOLID WASTE DISPOSAL SITES, SUCH AS ROBIN HOOD BAY. WITH RESPECT TO THE EXTERIOR WOOD SIDING, THE PAINT AND SUBSTRATE (I.E. SIDING WITH THE PAINT ADHERED TO IT), IS TO BE CONSIDERED HAZARDOUS LEAD WASTE. WITH RESPECT TO CONCRETE FOUNDATIONS AND FLOOR SLABS WHICH ARE TO REMAIN, THE PAINT IS TO BE REMOVED FROM THE CONCRETE SURFACES AND DISPOSED OF AS HAZARDOUS LEAD WASTE.
    - ALL THERMOSTATS AND FLUORESCENT LIGHT TUBES POTENTIALLY CONTAIN MERCURY AND ARE TO BE RECYCLED OR DISPOSED OF AT AN APPROVED FACILITY.
    - FLUORESCENT LIGHT BALLASTS ARE TO BE PLACED IN STEEL CONTAINERS, TRANSPORTED AS HAZARDOUS WASTE AND DISPOSED OF AS PCBs.
    - MOULD IS PRESENT THROUGHOUT THE INTERIOR SURFACES OF THE INFRASTRUCTURE. WORKERS TO DON PPE WHEN WORKING ON THE BUILDING INTERIOR.
    - WATER PIPES POTENTIALLY CONTAIN LEAD SOLDER AND ARE TO BE DISPOSED OF AT A METAL RECYCLING FACILITY.
    - RESIDENTIAL TYPE REFRIGERATORS AND FREEZERS ARE TO BE DISPOSED OF AT A WASTE FACILITY CAPABLE OF ACCEPTING OZONE DEPLETING SUBSTANCES.
    - FIRE EXTINGUISHERS ARE TO BE DISPOSED OF AS HOUSEHOLD HAZARDOUS WASTE.
    - SMOKE ALARMS POTENTIALLY CONTAINING RADIOACTIVE MATERIALS, TO BE TRANSPORTED AS DANGEROUS GOODS AND DISPOSED OF AT A LICENSED DISPOSAL FACILITY.
    - IN THE ABSENCE OF SAMPLING, ALL TREATED TIMBER (CREOSOTE AND COA TIMBER) IS TO BE DISPOSED OF AS HAZARDOUS WASTE. THE DEPARTMENTAL REPRESENTATIVE WILL PERMIT DISPOSAL OF TREATED TIMBER AT ONE OF THE REGIONAL SOLID WASTE DISPOSAL SITES, SUCH AS ROBIN HOOD BAY, IF THE CONTRACTOR CHOOSES TO SAMPLE THE WOOD FOR LEACHABILITY (AT THE CONTRACTORS COST) AND THE RESULTS ARE WITHIN THE APPLICABLE LEACHABILITY GUIDELINES FOR CREOSOTE AND METALS COMPOUNDS.
    - METAL WASTE AND OTHER DEBRIS, INCLUDING BUT NOT LIMITED TO ELECTRICAL AND MECHANICAL EQUIPMENT, TANKS, PRESSURE VESSELS, CABLES, PIPES, TIRES, WOOD, ETC. ARE SCATTERED AT VARIOUS LOCATIONS THROUGHOUT THE SITE. TAKE INVENTORY OF THESE MATERIALS AT THE PRE-TENDER SITE VISIT AND CARRY DISPOSAL COSTS IN BID.



**PLAN – MAIN EQUIPMENT BUILDING**  
SCALE : N.T.S.



**PLAN – LOWER EQUIPMENT BUILDING**  
SCALE : N.T.S.

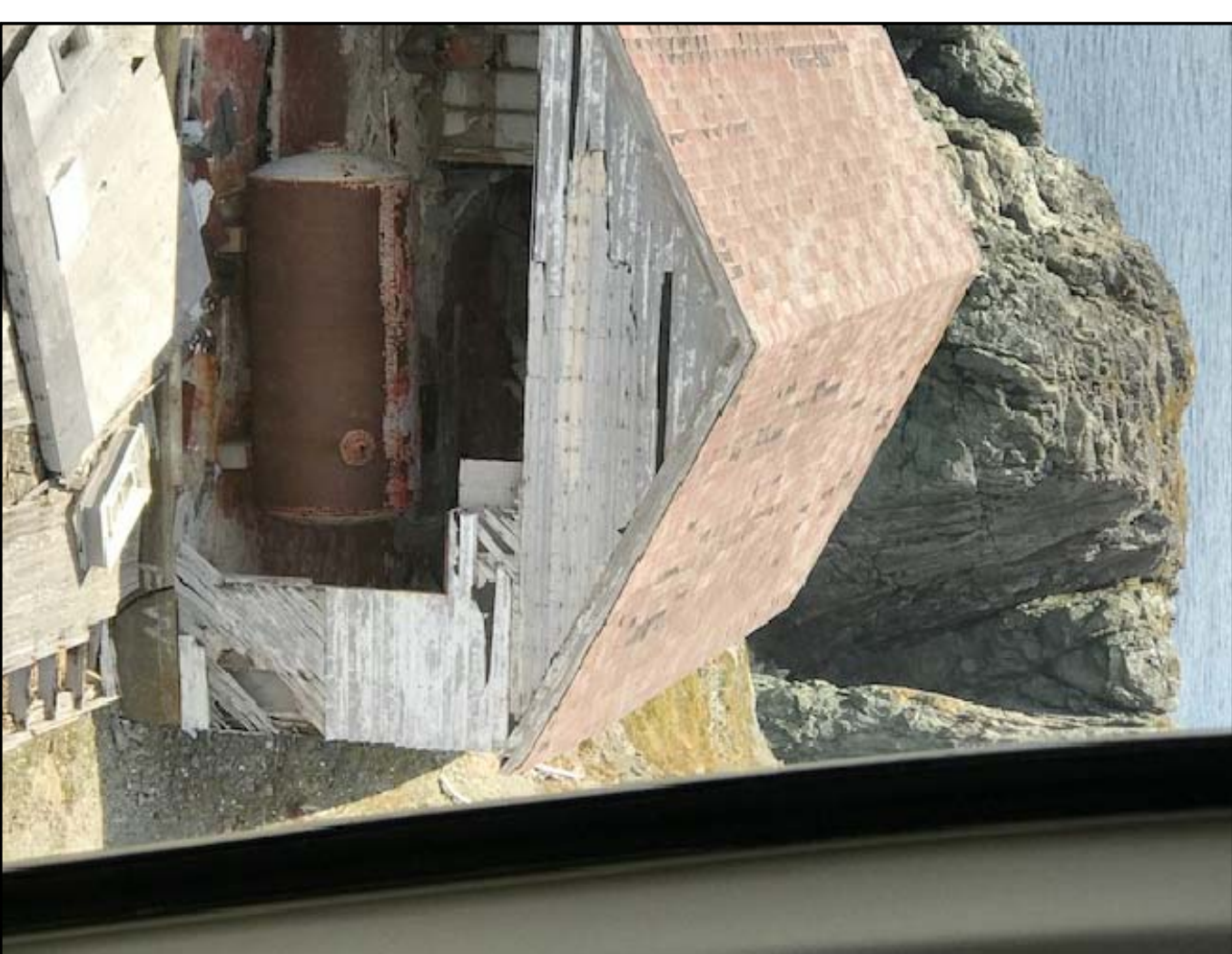
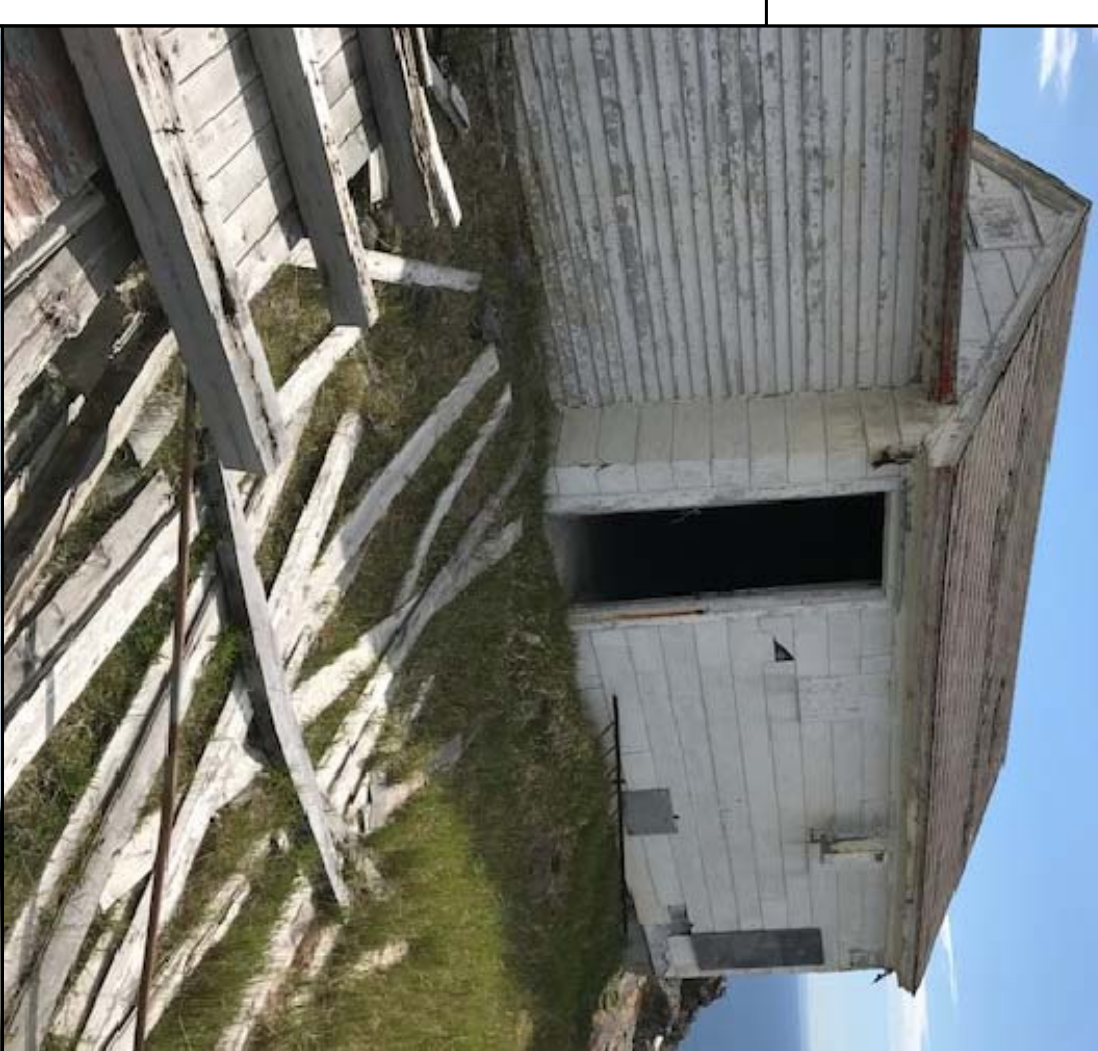


**Fisheries and Oceans**  
Pêches et Océans

**Road Property, Safety & Security**  
Biens immobiliers, protection et sécurité

**PROVINCE OF NEWFOUNDLAND**  
Permit Holder  
APN ENGINEERING INC.

**REGISTERED PROFESSIONAL ENGINEER**  
MEL C. HINE  
No. 11173  
NEWFOUNDLAND AND LABRADOR



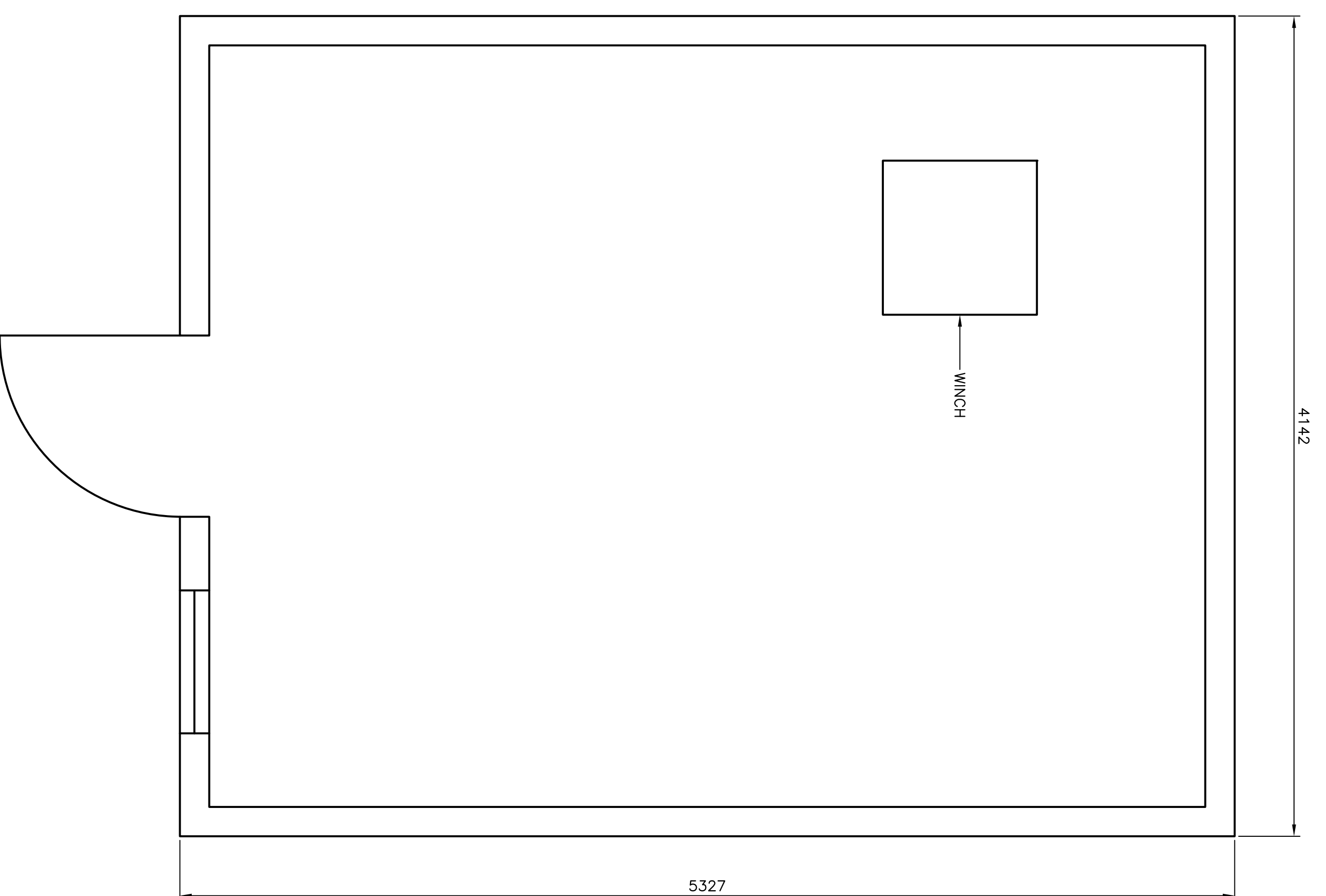
**Project – project** REMOVAL OF VARIOUS SURPLUS INFRASTRUCTURE AT GULL ISLAND LIGHT STATION GULL ISLAND, NL

**PLANS – MAIN EQUIPMENT BUILDING AND LOWER EQUIPMENT BUILDING**

drawn – dessiné	P.H.	designed – dessiné par	N.H.
date – date	JULY 12, 2017	checked – vérifié	N.H.
scale – échelle	N.T.S.	approved for tender – approuvé pour l'offre	
project no. – projet no.	5	drawing no. – no. du dessin	CO4
	FS879-171008	Q2E1A01A01B004	

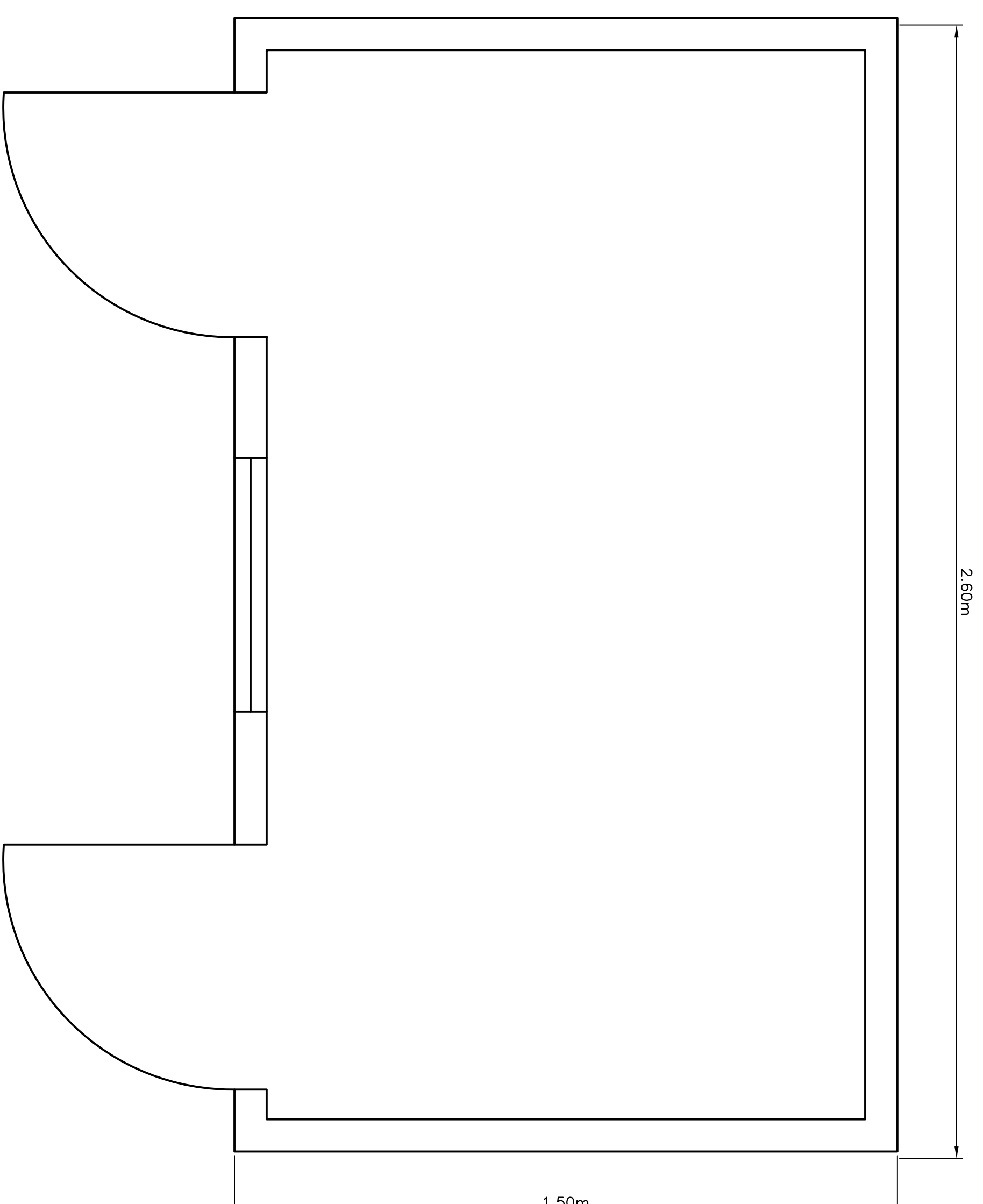
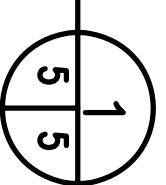


- NOTES:**
- DIMENSIONS SHOWN ARE TO BE CONSIDERED APPROXIMATE. CONFIRM ALL CRITICAL DIMENSIONS DURING THE SITE VISIT AND CARRY COSTS ACCORDINGLY.
  - LAYOUTS, ELEVATIONS AND PLANS ARE SHOWN FOR GENERALLY ILLUSTRATION PURPOSES ONLY. EXPECT ACTUAL SITE CONDITIONS TO VARY.
  - REFER TO THE HAZARDOUS MATERIAL SAMPLING REPORT (APPENDED TO THE SPECIFICATIONS), FOR QUANTITIES OF KNOWN OR SUSPECTED HAZARDOUS BUILDING MATERIALS. FOR THE PURPOSES OF THIS CONTRACT, THE FOLLOWING HAZARDOUS MATERIALS ARE TO BE REMOVED AND DISPOSED OF AS PART OF THE DEMOLITION ACTIVITIES:
    - PERMANENTLY CONTAMINATED GROUND ON THE INTERIOR WALLS AND CEILING CONTAINS ASBESTOS AND IS TO BE DISPOSED OF IN ACCORDANCE WITH THE NL ASBESTOS ABATEMENT REGULATIONS. ROOFING SHINGLES, UNDERLAYING TAR MATERIAL, MASTIC MATERIAL, AT ROOFING PENETRATIONS, HEAT SHIELDS ON FURNACES/STOVES, CEMENT BOARD/SIDING (TRANSITE), CAULKING AND VINYL FLOORING IS ALSO TO BE CONSIDERED ASBESTOS. CONTRACTORS TO PROVIDE EVIDENCE THAT THEY ARE REGISTERED WITH SERVICE NL AS AN ASBESTOS ABATEMENT CONTRACTOR.
    - LEACHABLE LEAD BASED PAINT IS PRESENT ON ALL INTERIOR AND EXTERIOR SURFACES. LEACHABLE LEAD BASED PAINT IS CONSIDERED HAZARDOUS FOR THE PURPOSES OF TRANSPORTATION AND DISPOSAL. LOOSE, FLAKING PAINT FROM SURFACES IS TO BE DEWAXED-UP AND DISPOSED OF AS HAZARDOUS WASTE. WHERE PAINT IS NOT FLAKING/PEELING FROM CONSTRUCTION MATERIALS, THE MATERIAL CAN BE DISPOSED OF AT ONE OF THE REGIONAL SOLID WASTE DISPOSAL SITES, SUCH AS ROBIN HOOD BAY. WITH RESPECT TO THE EXTERIOR WOOD SIDING, THE PAINT AND SUBSTRATE (I.E. SIDING WITH THE PAINT ADHERED TO IT), IS TO BE CONSIDERED HAZARDOUS LEAD WASTE. WITH RESPECT TO CONCRETE FOUNDATIONS AND FLOOR SLABS WHICH ARE TO REMAIN, THE PAINT IS TO BE REMOVED FROM THE CONCRETE SURFACES AND DISPOSED OF AS HAZARDOUS LEAD WASTE.
    - ALL THERMOSTATS AND FLUORESCENT LIGHT TUBES POTENTIALLY CONTAIN MERCURY AND ARE TO BE RECYCLED OR DISPOSED OF AT AN APPROVED FACILITY.
    - FLUORESCENT LIGHT BALLASTS ARE TO BE PLACED IN STEEL CONTAINERS, TRANSPORTED AS HAZARDOUS WASTE AND DISPOSED OF AS PCBs.
    - MOULD IS PRESENT THROUGHOUT THE INTERIOR SURFACES OF THE INFRASTRUCTURE. WORKERS TO DON PPE WHEN WORKING ON THE BUILDING INTERIOR.
    - WATER PIPES POTENTIALLY CONTAIN LEAD SOLDER AND ARE TO BE DISPOSED OF AT A METAL RECYCLING FACILITY.
    - RESIDENTIAL TYPE REFRIGERATORS AND FREEZERS ARE TO BE DISPOSED OF AT A WASTE FACILITY CAPABLE OF ACCEPTING OZONE DEPLETING SUBSTANCES.
    - FIRE EXTINGUISHERS ARE TO BE DISPOSED OF AS HOUSEHOLD HAZARDOUS WASTE.
    - SMOKE ALARMS POTENTIALLY CONTAINING RADIOACTIVE MATERIALS, TO BE TRANSPORTED AS DANGEROUS GOODS AND DISPOSED OF AT A LICENSED DISPOSAL FACILITY.
    - IN THE ABSENCE OF SAMPLING, ALL TREATED TIMBER (CREOSOTE AND COA TIMBER) IS TO BE DISPOSED OF AS HAZARDOUS WASTE. THE DEPARTMENTAL REPRESENTATIVE WILL PERMIT DISPOSAL OF TREATED TIMBER AT ONE OF THE REGIONAL SOLID WASTE DISPOSAL SITES, SUCH AS ROBIN HOOD BAY, IF THE CONTRACTOR CHOOSES TO SAMPLE THE WOOD FOR LEACHABILITY (AT THE CONTRACTOR'S COST) AND THE RESULTS ARE WITHIN THE APPLICABLE LEACHABILITY GUIDELINES FOR CREOSOTE AND METALS COMPOUNDS.
    - METAL WASTE AND OTHER DEBRIS, INCLUDING BUT NOT LIMITED TO ELECTRICAL AND MECHANICAL EQUIPMENT, TANKS, PRESSURE VESSELS, CABLES, PIPES, TIRES, WOOD, ETC. ARE SCATTERED AT VARIOUS LOCATIONS THROUGHOUT THE SITE. TAKE INVENTORY OF THESE MATERIALS AT THE PRE-TENDER SITE VISIT AND CARRY DISPOSAL COSTS IN BID.



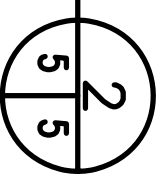
PLAN – BOATHOUSE

SCALE : N.T.S.



PLAN – STORAGE SHED #2

SCALE : N.T.S.



**Fisheries and Oceans**  
Pêches et Océans

**Road Property, Safety & Security**  
Biens immobiliers, protection et sécurité

**PROVINCE OF NEWFOUNDLAND**  
The Permit Holder  
APN ENGINEERING INC.

**REGISTERED PROFESSIONAL ENGINEER**  
MILL C. HUNY  
No. 12345  
REGISTERED IN THE PROVINCE OF NEWFOUNDLAND SINCE 2012

A	ISSUED FOR TENDER	7/12/17	P.H.	N.H.
no.	revision	date	by	approved
no.	revision	date	by	approved

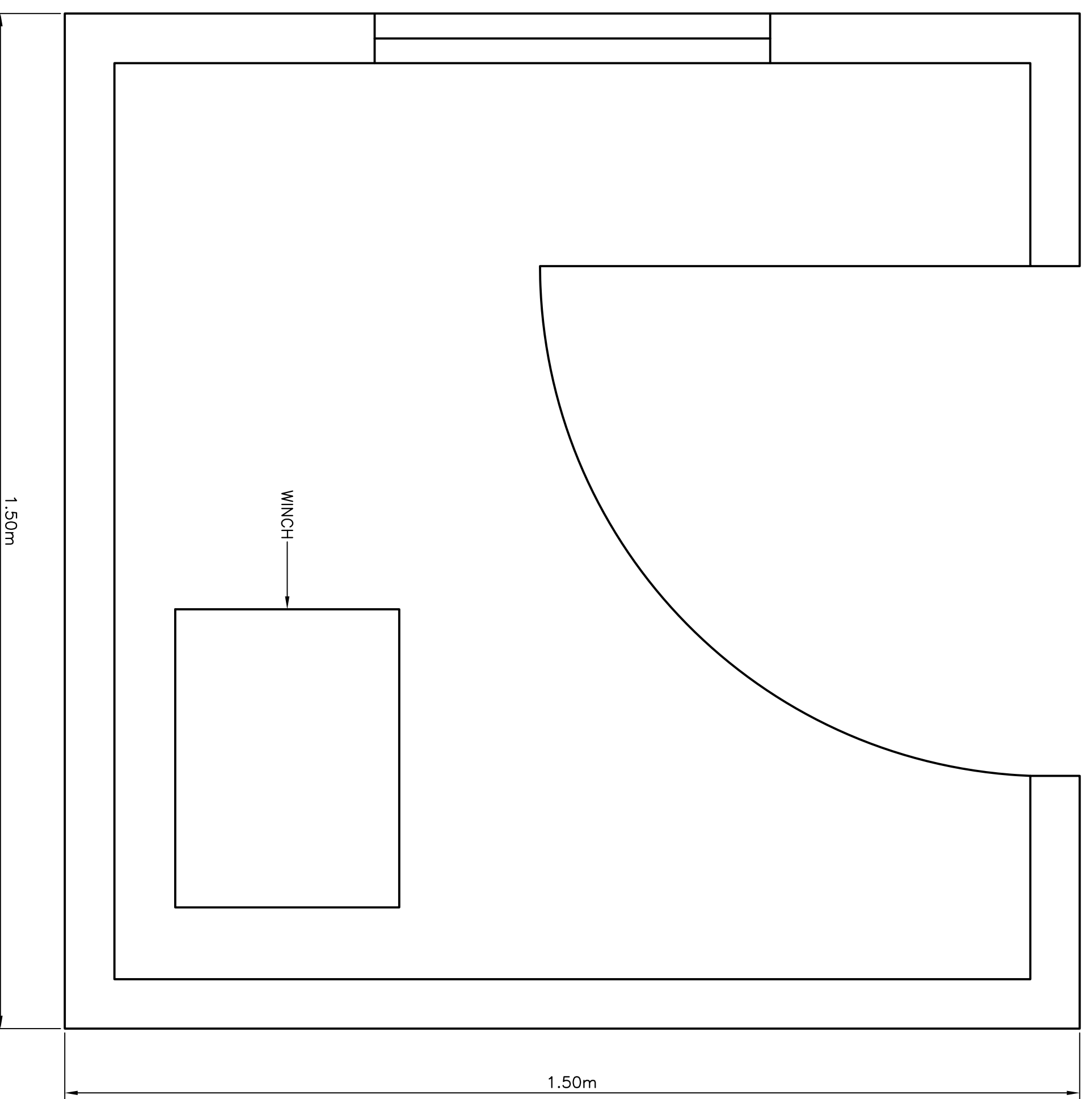
Project – project  
REMOVAL OF VARIOUS SURPLUS INFRASTRUCTURE AT GULL ISLAND LIGHT STATION GULL ISLAND, NL

Drawing – dessin  
PLANS – BOATHOUSE AND STORAGE SHED #2

drawn – dessiné	P.H.	designed – dessiné par	N.H.
date – date	JULY 12, 2017	checked – vérifié	N.H.
scale – échelle	N.T.S.	approved for tender – approuvé pour l'offre	
project no. – projet no.	62E1401A016005	sheet – feuille	C05
drawing no. – no. du dessin	62E1401A016005		
project no. – projet no.	62E1401A016005		

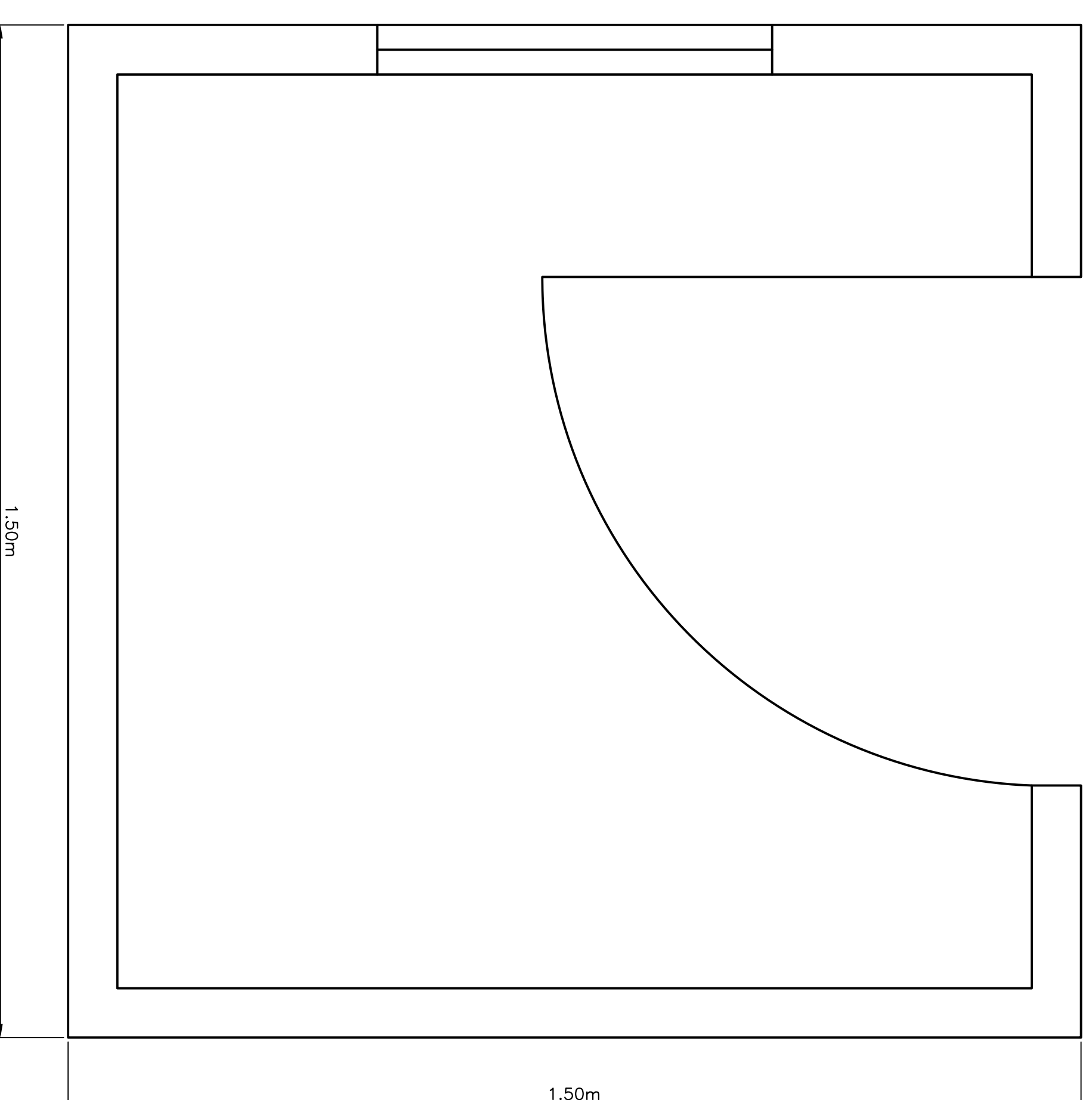
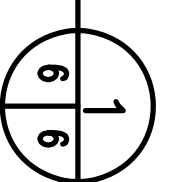


- NOTES:**
- DIMENSIONS SHOWN ARE TO BE CONSIDERED APPROXIMATE. CONFIRM ALL CRITICAL DIMENSIONS DURING THE SITE VISIT AND CARRY COSTS ACCORDINGLY.
  - LAYOUTS, ELEVATIONS AND PLANS ARE SHOWN FOR GENERALLY ILLUSTRATION PURPOSES ONLY. EXPECT ACTUAL SITE CONDITIONS TO VARY.
  - REFER TO THE HAZARDOUS MATERIAL SAMPLING REPORT (APPENDED TO THE SPECIFICATIONS), FOR QUANTITIES OF KNOWN OR SUSPECTED HAZARDOUS BUILDING MATERIALS. FOR THE PURPOSES OF THIS CONTRACT, THE FOLLOWING HAZARDOUS MATERIALS ARE TO BE REMOVED AND DISPOSED OF AS PART OF THE DEMOLITION ACTIVITIES:
    - PERMANENT, INCLUDING JOINT COMPOUND ON THE INTERIOR WALLS AND CEILINGS CONTAINS ASBESTOS AND IS TO BE REMOVED IN ACCORDANCE WITH THE NL ASBESTOS ABATEMENT REGULATIONS. ROOFING SHINGLES, UNDERLAYING TAR MATERIAL, MASTIC MATERIAL, AT ROOFING PENETRATIONS, HEAT SHIELDS ON FURNACES/STOVES, CEMENT BOARD/SIDING (TRANSITE), CAULKING AND VINYL FLOORING IS ALSO TO BE CONSIDERED ASBESTOS. CONTRACTORS TO PROVIDE EVIDENCE THAT THEY ARE REGISTERED WITH SERVICE NL AS AN ASBESTOS ABATEMENT CONTRACTOR.
    - LEACHABLE LEAD BASED PAINT IS PRESENT ON ALL INTERIOR AND EXTERIOR SURFACES. LEACHABLE LEAD BASED PAINT IS CONSIDERED HAZARDOUS FOR THE PURPOSES OF TRANSPORTATION AND DISPOSAL. LOOSE, FLAKING PAINT FROM SURFACES IS TO BE DEWUMED-UP AND DISPOSED OF AS HAZARDOUS WASTE. WHERE PAINT IS NOT FLAKING/PEELING FROM CONSTRUCTION MATERIALS, THE MATERIAL CAN BE DISPOSED OF AT ONE OF THE REGIONAL SOLID WASTE DISPOSAL SITES, SUCH AS ROBIN HOOD BAY. WITH RESPECT TO THE EXTERIOR WOOD SIDING, THE PAINT AND SUBSTRATE (I.E. SIDING WITH THE PAINT ADHERED TO IT), IS TO BE CONSIDERED HAZARDOUS LEAD WASTE. WITH RESPECT TO CONCRETE FOUNDATIONS AND FLOOR SLABS WHICH ARE TO REMAIN, THE PAINT IS TO BE REMOVED FROM THE CONCRETE SURFACES AND DISPOSED OF AS HAZARDOUS LEAD WASTE.
    - ALL THERMOSTATS AND FLUORESCENT LIGHT TUBES POTENTIALLY CONTAIN MERCURY AND ARE TO BE RECYCLED OR DISPOSED OF AT AN APPROVED FACILITY.
    - FLUORESCENT LIGHT BALLASTS ARE TO BE PLACED IN STEEL CONTAINERS, TRANSPORTED AS HAZARDOUS WASTE AND DISPOSED OF AS PCBs.
    - MOULD IS PRESENT THROUGHOUT THE INTERIOR SURFACES OF THE INFRASTRUCTURE. WORKERS TO DON PPE WHEN WORKING ON THE BUILDING INTERIOR.
    - WATER PIPES POTENTIALLY CONTAIN LEAD SOLDER AND ARE TO BE DISPOSED OF AT A METAL RECYCLING FACILITY.
    - RESIDENTIAL TYPE REFRIGERATORS AND FREEZERS ARE TO BE DISPOSED OF AT A WASTE FACILITY CAPABLE OF ACCEPTING OZONE DEPLETING SUBSTANCES.
    - FIRE EXTINGUISHERS ARE TO BE DISPOSED OF AS HOUSEHOLD HAZARDOUS WASTE.
    - SMOKE ALARMS POTENTIALLY CONTAINING RADIOACTIVE MATERIALS, TO BE TRANSPORTED AS DANGEROUS GOODS AND DISPOSED OF AT A LICENSED DISPOSAL FACILITY.
    - IN THE ABSENCE OF SAMPLING, ALL TREATED TIMBER (CREOSOTE AND COA TIMBER) IS TO BE DISPOSED OF AS HAZARDOUS WASTE. THE DEPARTMENTAL REPRESENTATIVE WILL PERMIT DISPOSAL OF TREATED TIMBER AT ONE OF THE REGIONAL SOLID WASTE DISPOSAL SITES, SUCH AS ROBIN HOOD BAY, IF THE CONTRACTOR CHOOSES TO SAMPLE THE WOOD FOR LEACHABILITY (AT THE CONTRACTOR'S COST) AND THE RESULTS ARE WITHIN THE APPLICABLE LEACHABILITY GUIDELINES FOR CREOSOTE AND METALS COMPOUNDS.
    - METAL WASTE AND OTHER DEBRIS, INCLUDING BUT NOT LIMITED TO ELECTRICAL AND MECHANICAL EQUIPMENT, TANKS, PRESSURE VESSELS, CABLES, PIPES, TIRES, WOOD, ETC. ARE SCATTERED AT VARIOUS LOCATIONS THROUGHOUT THE SITE. TAKE INVENTORY OF THESE MATERIALS AT THE PRE-TENDER SITE VISIT AND CARRY DISPOSAL COSTS IN BID.



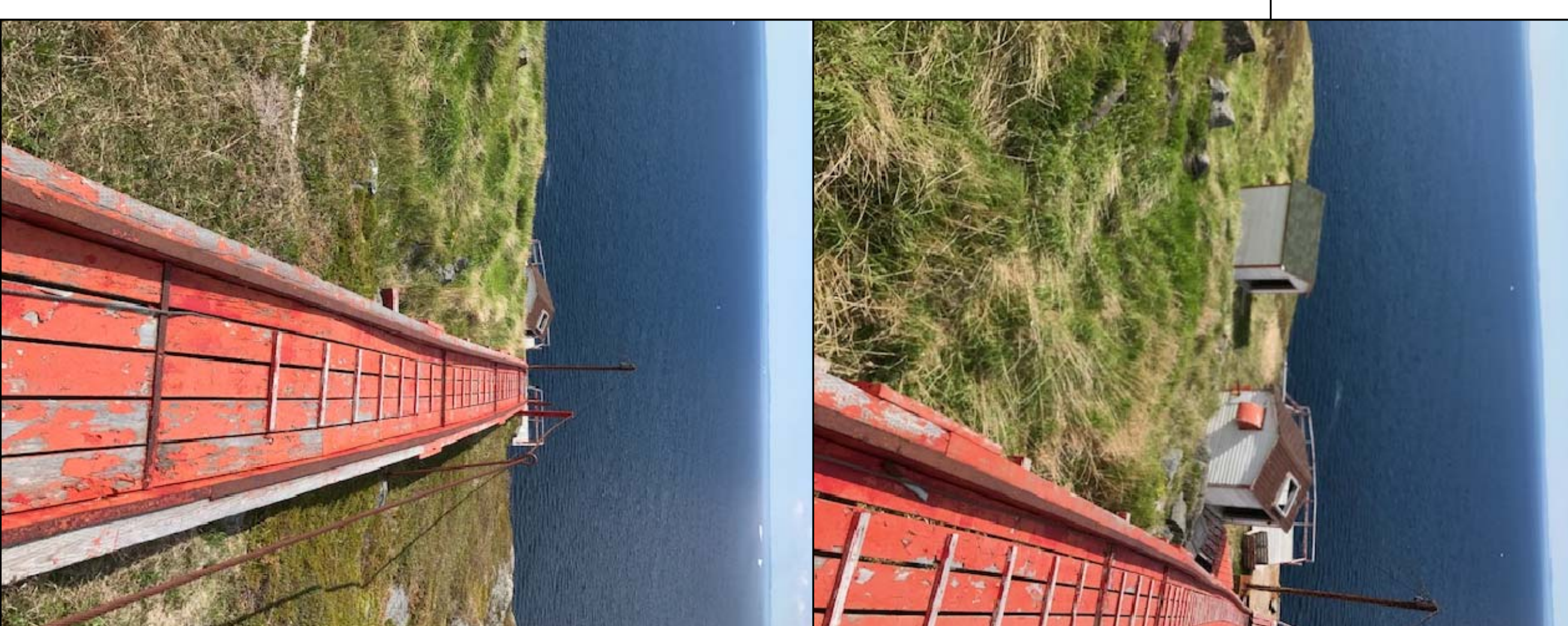
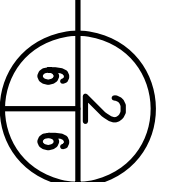
PLAN – WINCH HOUSE

SCALE : N.T.S.



PLAN – STORAGE SHED #1

SCALE : N.T.S.



A	no.	ISSUED FOR TENDER	revision	revision	date	P.H.	N.H.
					7/12/17		

Project – REMOVAL OF VARIOUS SURPLUS INFRASTRUCTURE AT GULL ISLAND LIGHT STATION GULL ISLAND, NL

Drawing – design

PLANS – WINCH HOUSE AND STORAGE SHED #1

drawn – dessine	P.H.	designed – dessiné par	N.H.
date – date	JULY 12, 2017	checked – vérifié	N.H.
scale – échelle	N.T.S.	approved by tender-approve pour l'offre	
project no. – projet no.	58979-171008	drawing no. – no. du dessin	02E1401A018C06
		sheet – feuille	006

**Fisheries and Oceans**  
Pêches et Océans  
Réal Property, Safety & Security  
Biens immobiliers, protection et sécurité

PROVINCE OF NEWFOUNDLAND  
PERMIT HOLDER  
The Permit Allows  
APN ENGINEERING INC.  
To practice Professional Engineering in Newfoundland and Labrador from July 12, 2017 to July 12, 2018.  
which is valid for the year 2017-2018.

