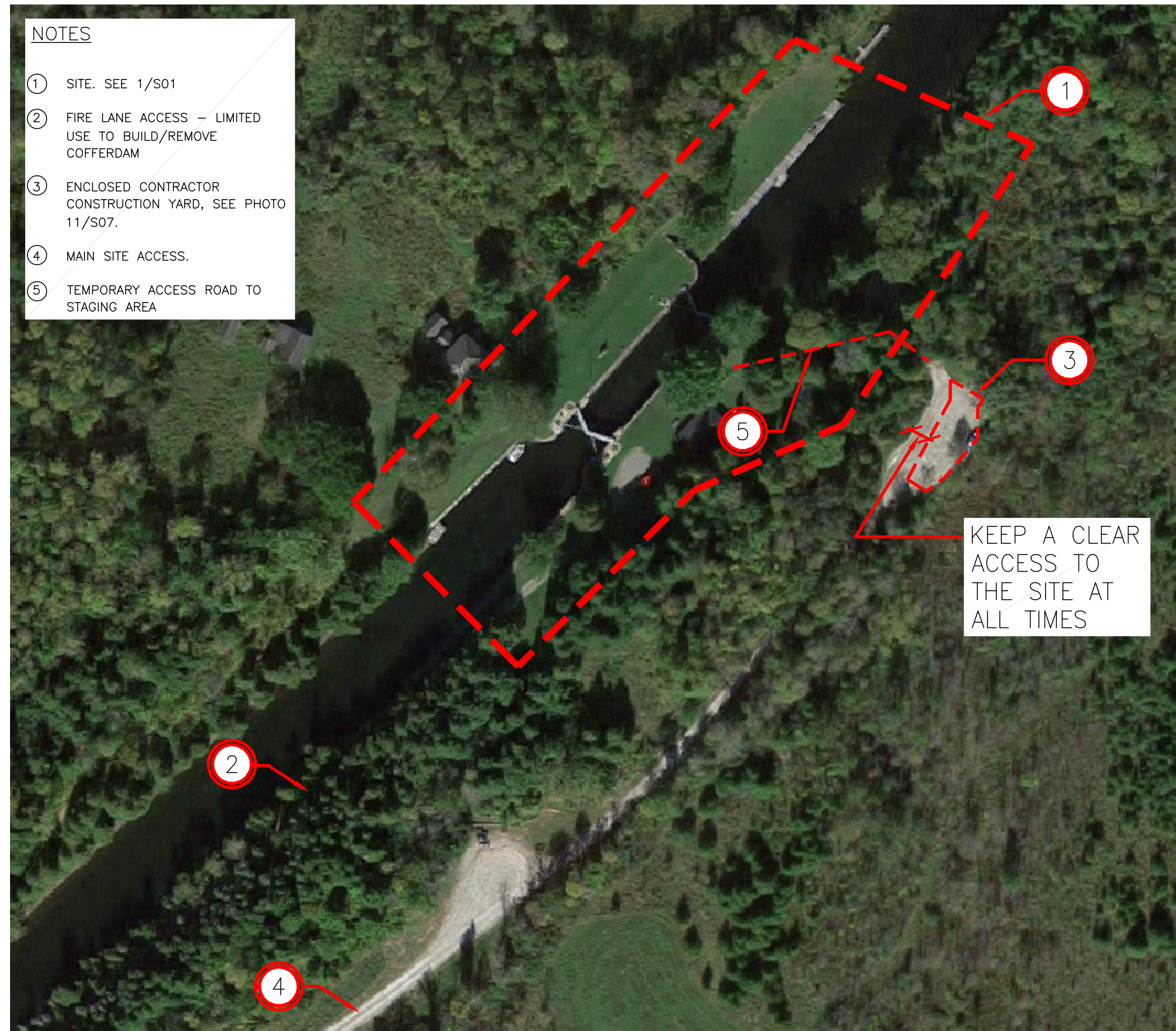


POONAMALIE LOCK 32 HERITAGE STONE MASONRY REPAIRS

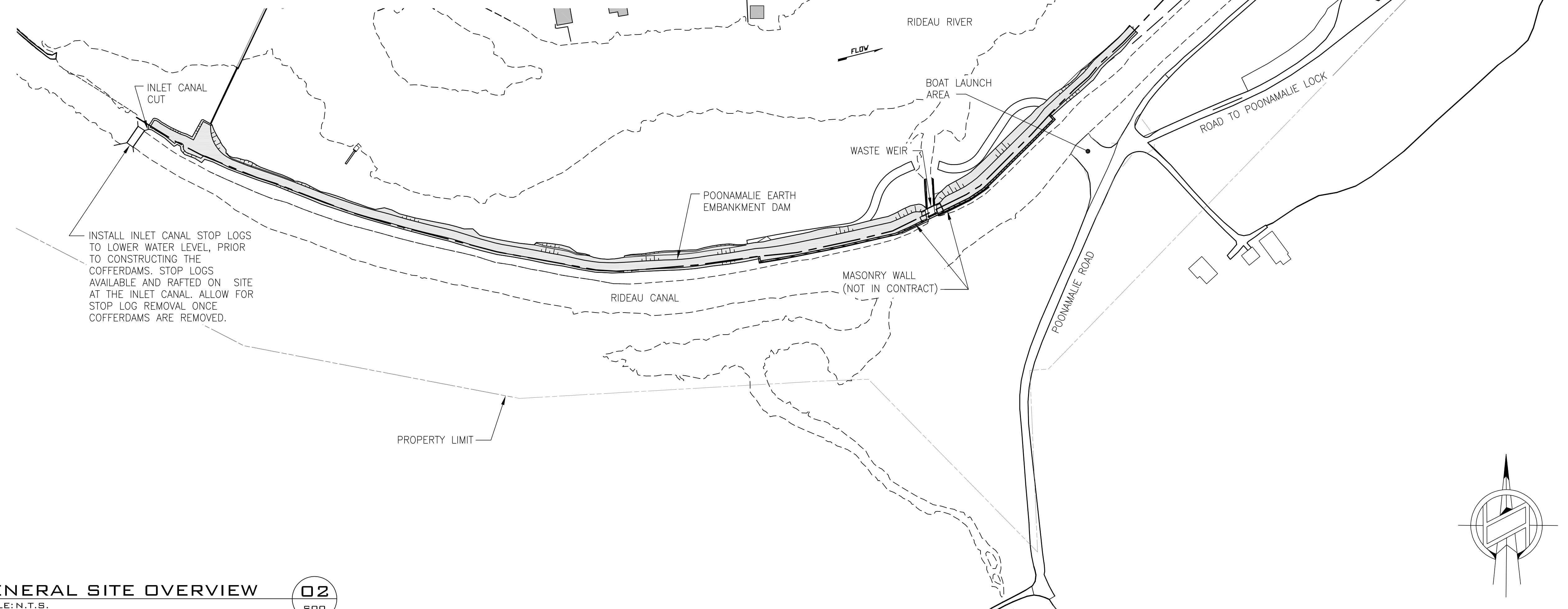
DRAWING LIST

- S00 GENERAL SITE OVERVIEW
- S01 GENERAL ARRANGEMENT KEY PLAN
- S02 PLAN
- S03 ELEVATIONS
- S04 SECTIONS AND DETAILS
- S05 SECTIONS AND DETAILS
- S06 PHOTOGRAPHIC DETAILS
- S07 PHOTOGRAPHIC DETAILS



- NOTES**
- 1 SITE. SEE 1/S01
 - 2 FIRE LANE ACCESS - LIMITED USE TO BUILD/REMOVE COFFERDAM
 - 3 ENCLOSED CONTRACTOR CONSTRUCTION YARD, SEE PHOTO 11/S07.
 - 4 MAIN SITE ACCESS.
 - 5 TEMPORARY ACCESS ROAD TO STAGING AREA

KEY LOCATION PLAN
SCALE: N.T.S. 01
S00



GENERAL SITE OVERVIEW
SCALE: N.T.S. 02
S00

Parcs Canada Parks Canada

JOHN G. COOKE & ASSOCIATES LTD.
CONSULTING ENGINEERS
17 FITZGERALD ROAD SUITE 200 (613) 226-8718 E-MAIL mallbox@jgcooke.com WEB SITE
OTTAWA, ONT. K2H 9G1 FAX (613) 226-7424
www.jgcooke.com

17026

17026-S01 DRAWING 1 OF 8

DRAWING NO. DRAWING NAME

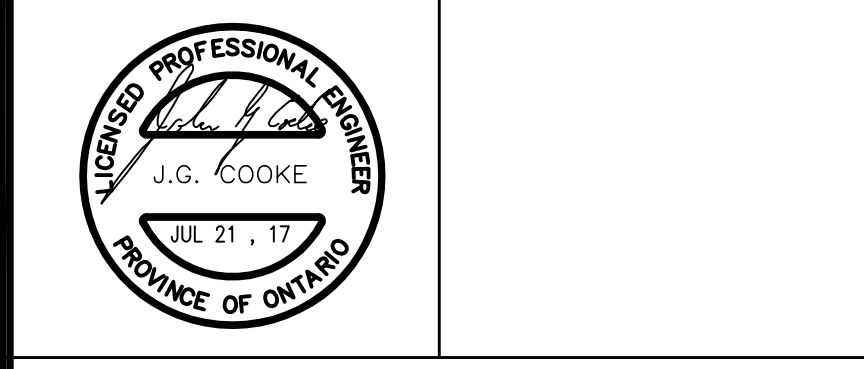
REFERENCE DRAWINGS

NO.	DATE	DESCRIPTION	Drawn by	Approved
2	2017/08/21	ISSUED FOR BID	C.P.	L.M.
1	2017/07/12	100% SUBMISSION	C.P.	L.M.

REVISIONS

A	B	A Detail number	B Sheet number	A Numero de detail	B Sur feuille numero

Linear dimensions in millimeters / Dimensions lineaires en millimetres



PARKS CANADA
EASTERN ONTARIO FIELD UNIT

Type of Record / Type d'enregistrement

Project title / Titre du projet
**POONAMALIE LOCK 32
HERITAGE STONE MASONRY REPAIRS**

Drawing title / Titre du dessin
GENERAL SITE OVERVIEW

Plot Scale / Echelle
1:1 (Arch D 24x36 Plot Size)

Drawn by / Dessine par
C.P. 2017/01/11

Field Recording by / Relevé-Terminé par
L.M. & J.C. & C.P. 2016/11/21

Approved by / Approuvé par
L.M. 2017/07/27

Checked by / Vérifié par
J.C. 2017/07/27

Project No./ No. du projet
17026

Asset No. / Feuille No.
17026-S00-R02

S00

SCOPE OF WORK (SEE DETAILS ON DWG S01 AND S02)

1. INSTALL APPROVED COFFERDAM STRUCTURES UPSTREAM AND DOWNSTREAM BEYOND EXTENT OF STONE MASONRY AS REQUIRED, TO ALLOW WORK. COFFERDAM DESIGN INSTALLATION TO BE REVIEWED AND CERTIFIED BY AN ENGINEER RETAINED BY THE CONTRACTOR, WHO IS REGISTERED IN THE PROVINCE OF ONTARIO AND EXPERIENCED IN COFFERDAM DESIGN AND CONSTRUCTION. BEFORE PROCEEDING WITH ANY REPAIRS, COFFERDAMS MUST BE LOCATED NO CLOSER THAN 600mm TO MASONRY WALLS REQUIRING STONE REPAIR. THE CONTRACTOR MAY CHOOSE TO LOCATE THE COFFERDAMS FURTHER UPSTREAM AND DOWNSTREAM IN ORDER TO BETTER SEAL THE EDGE CONDITIONS AT THE COFFERDAMS. CONSTRUCT UPSTREAM COFFERDAM TO CREST AT 122.63m, AND DOWNSTREAM COFFERDAM TO CREST AT 122.63m. REFER TO APPENDIX A FOR BATHYMETRY SURVEY AND BOREHOLE LOG. THIS IS FOR INFORMATION ONLY. CONTRACTOR IS RESPONSIBLE TO VERIFY ALL SITE CONDITIONS.
 - a) EDGE CONDITION CONSISTS OF NATURAL SLOPED ROCKY SAND BANK. SEE DETAIL 8/S05.
 - b) EDGE CONDITION CONSISTS OF CONCRETE RETAINING WALL FOR WHARF. SEE DETAIL 7/S05.
2. CONSTRUCT WINTER PROTECTION ENCLOSURE AS REQUIRED TO COMPLETE THE WORK WITHIN THE REQUIREMENTS OF THE PROJECT, SEE 01/S05.
3. INSTALL UPSTREAM AND DOWNSTREAM TURBIDITY CURTAINS, PRIOR TO START OF WORK. INSTALL CURTAINS AT LEAST 1m BEYOND COFFERDAM. AFTER MARCH 14, RELOCATE 1m BEYOND LOG GAINS. INSTALL CURTAINS AS TO EXCLUDE FISH FROM WORK AREA. KEEP TURBIDITY CURTAINS FREE OF ICE.
4. INSTALL STOP LOGS IN STOP LOG GAIN TO COMPLETE THE WORK INSIDE THE LOCK IF REQUIRED, BETWEEN MARCH AND MAY DEADLINES. STOP LOGS TO BE INSTALLED PRIOR TO DISMANTLING COFFERDAMS. STOP LOGS TO BE PROVIDED TO THE CONTRACTOR, ON LOAN FROM PCA. CONTRACTOR IS RESPONSIBLE FOR ARRANGING DELIVERY OF STOP LOGS TO SITE, INSTALLING THEM, REMOVING THEM AND RETURNING THEM TO PCA. THE STOP LOGS MUST BE SEALED ON THE OUTSIDE FACE WITH A POLYSHEET OR OTHER MEANS TO PREVENT THE LOGS FROM LEAKING IF NOT SEALED.
5. MASONRY REPAIRS ALONG LOCK MASONRY WALLS (ALL WALLS WITHIN OUTLINE SHOWN UNLESS NOTED), SEE 1/S03 AND 2/S03.
6. GROUTING OF MASONRY WALLS, SEE 08/S04.
7. RELOCATE TURBIDITY CURTAINS TO OUTSIDE LOG GAINS AND DISMANTLE COFFERDAM AFTER COMPLETION OF THE REPAIRS OUTSIDE OF LOG GAINS, BUT NO LATER THAN MARCH 14TH, 2018, WHICHEVER IS EARLIER.
8. PROTECT EARTH DAMS FROM RUTTING AND OTHER DAMAGE IF USED FOR TEMPORARY ACCESS.
9. LOCK GATES. NO WORK ON GATES IS INCLUDED IN SCOPE.
10. LADDER TO BE REMOVED AND DISPOSED OFF SITE, FABRICATE AND PAINT NEW LADDER. INSTALL AFTER MASONRY REPAIRS ARE COMPLETE, SEE DRAWING S03 FOR SCOPE.
11. PARKS CANADA SIGNAGE AND MISCELLANEOUS FURNITURE AT THE EDGE OF THE LOCKS TO BE PROTECTED FROM DAMAGE DURING CONSTRUCTION.
12. SKYWARD FACING JOINTS IN STONE/CONCRETE CAP INCLUDED IN SCOPE. REPOINT JOINTS AS PER 02/S04.
13. SLUICE TUNNEL/SHAFT MASONRY TO BE REPAIRED. SEE DRAWING S02 AND S03. SHAFT WALLS ARE INCLUDED IN REPOINTING SCOPE. REMOVE STEEL BRACING AFTER WALL HAS BEEN REPAIRED AND STABILIZED, SEE PHOTOS 01,02 AND 03/S07.

14. UPSTREAM STONE MASONRY WALL TO BE REPAIRED. JOINTS INCLUDED IN REPOINTING SCOPE. SEE 07 & 08/S04.
15. UPSTREAM EXISTING CONCRETE WHARF. FLAGSTONE JOINTS TO REPOINTED. SOME STONE RESET IS REQUIRED.
16. DOWNSTREAM STONE MASONRY WALL TO BE REPAIRED. EXCAVATION, SOME DISMANTLING, REBUILD AND BACKFILL REQUIRED, SEE 09/S05.
17. DOWNSTREAM EXISTING WOOD CRIB WHARF. N.I.C.
18. REMOVE AND REPLACE CONCRETE APRONS SUPPORTING LOCK HARDWARE, SEE 10/S05.
19. WORK ON SECTIONS OF APPROACH WALLS, OVER WATER OUTSIDE OF LOG GAINS, TO 2m INSIDE OF LOG GAINS MUST BE COMPLETED PRIOR TO COMMENCING WORK INSIDE OF LOCK.
20. CAREFULLY EXCAVATE BEHIND MASONRY WALL TO DEPTH OF 1.8m. CONSOLIDATE MASONRY WALL FROM BEHIND AND REPOINT. BACKFILL AND RESTORE WITH SOD, SEE 12/S04.
21. CAREFULLY EXCAVATE TO DEPTH OF 600mm ADJACENT TO WALL REPOINT JOINTS AS PER 02/S04. BACKFILL AFTER AS PER DETAIL 11/S05.
22. CONCRETE. APRON SUPPORTING LOCK HARDWARE. REPAIR AS REQUIRED. SEE 10/S04.
23. INSTALL ADDITIONAL TURBIDITY CURTAIN ON UPSTREAM SIDE OF THE DOWNSTREAM COFFERDAM. ONCE TURBID WATER GENERATED BY IN-WATER WORK IS MITIGATED. REMOVE TURBIDITY CURTAIN, PRIOR TO DEWATERING. REINSTALL TURBIDITY CURTAIN BEFORE COFFERDAM REMOVAL.
24. REMOVE SHRUBS AND FLOWERBED. REINSTATE WITH SOD.

SITE SPECIFIC NOTES

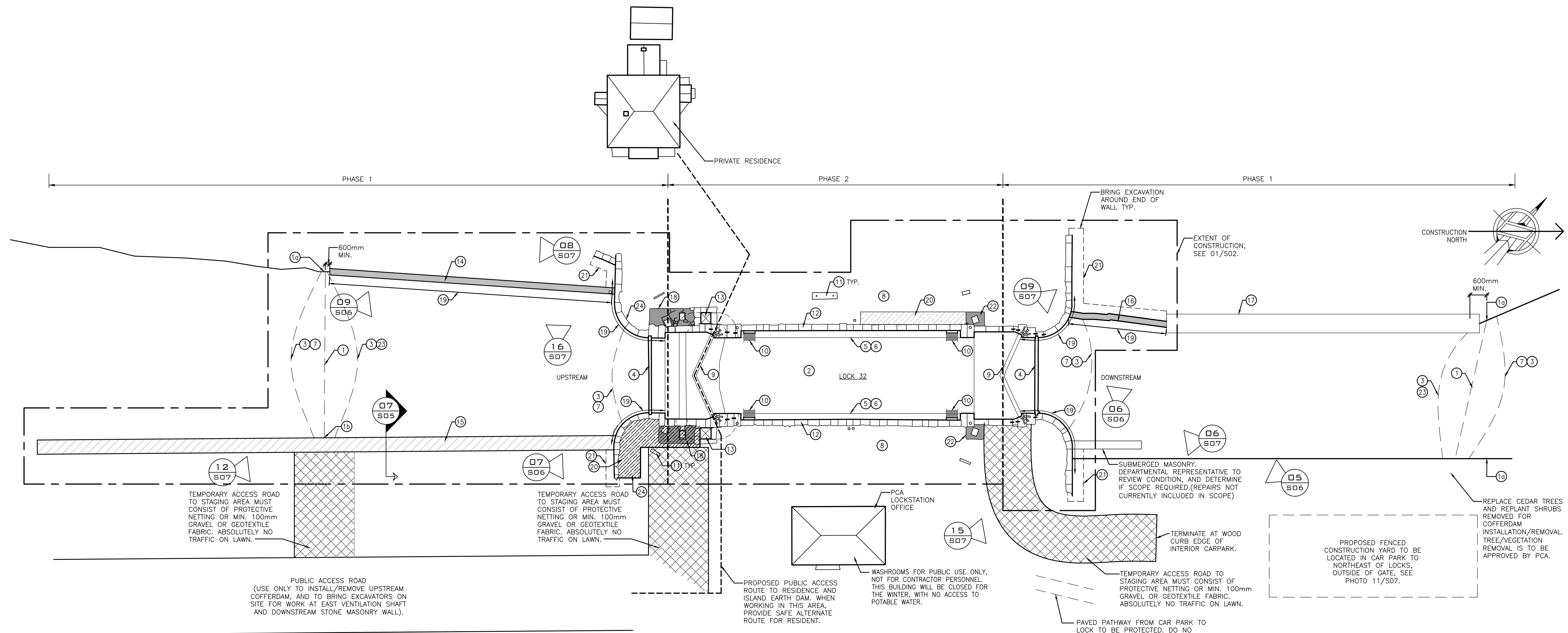
1. FENCE ALL WORK AREAS AND STAGING ZONES, WITH 1.8m HIGH FENCE
2. ALL COFFERDAMS MUST BE OUT OF WATER AND ALL REQUIRED STOP LOGS MUST BE IN PLACE, BY MARCH 14TH, 2018. NO IN-WATER WORK BEGINNING MARCH 15TH THROUGH JULY 15TH DUE TO FISHERIES RESTRICTIONS.
3. EXISTING SITE WASHROOMS ARE NOT PERMITTED FOR CONTRACTOR USE.
4. PRIOR TO DEWATERING, LOCK IS PERMITTED FOR CONTRACTOR USE WITHIN REGULAR OPERATIONS HOURS. PCA TO OPERATE LOCK ONLY. LOCKAGE FEES WILL BE WAIVED FOR MAX. 2 LOCKAGES PER DAY. THERE IS NO DEDICATED STAFF AVAILABLE AFTER THE END OF NAVIGATION SEASON. SITE WORK DOES NOT COMMENCE UNTIL AFTER OCTOBER 10TH, 2017. ALL LOCKAGES AFTER THIS DATE MUST BE COORDINATED WITH PCA. CONTRACTOR TO PROVIDE 24HR NOTICE TO PCA. PCA HOURS OF WORK 8:30AM TO 4:30PM, MONDAY TO FRIDAY.
5. NO CAMPING ON SITE. OVERNIGHT TRAILERS / SLEEPING QUARTERS FOR CONTRACTOR'S FORCES ARE PROHIBITED ON SITE.
6. NO TREE OR VEGETATION (SHRUB) CLEARING BETWEEN MAY 1ST AND AUGUST 1ST WITHOUT BIOLOGIST AND/OR PARKS CANADA DEPARTMENTAL REPRESENTATIVE FIRST CONSULTING MIGRATORY BIRD NESTING SURVEY TO CONFIRM WORK MAY PROCEED. CONTRACTOR REQUIRES PCA APPROVAL AND SHALL INDICATE SPECIFICALLY WHICH TREES/VEGETATION ARE REQUIRED TO BE REMOVED.
7. CONTRACTOR NOT TO INTERFERE WITH BOATER TRAFFIC USE OF THE LOCK.
8. MAINTAIN CONTINUOUS ACCESS TO LOCK MASTERS HOUSE ON ISLAND FOR DURATION OF THE PROJECT.
9. DESIGN AND CONSTRUCTION TO BE IN ACCORDANCE WITH THE CONTRACT DOCUMENTS. ENVIRONMENTAL LOADING TO BE IN ACCORDANCE WITH THE NATIONAL BUILDING CODE 2015.

GENERAL NOTES

1. CHECK ALL DIMENSIONS ON STRUCTURAL DRAWINGS. REPORT ANY INCONSISTENCIES BEFORE PROCEEDING WITH THE WORK. DO NOT SCALE THESE DRAWINGS.
2. BEFORE SUBMITTING BID FOR THE WORK, THE CONTRACTOR SHALL VISIT AND EXAMINE THE SITE. AN APPROVED SITE VISIT FOR JOB SHOWING IS PART OF THE BID PACKAGE. IF THE CONTRACTOR WISHES TO VISIT THE SITE, ARRANGEMENTS MUST BE MADE WITH PCA. MINIMUM 24 HOURS PRIOR TO VISITING THE SITE.
3. ALL DIMENSIONS UNLESS OTHERWISE NOTED ARE IN MILLIMETERS.
4. INDEPENDENT INSPECTION AND TESTING: THE DEPARTMENTAL REPRESENTATIVE WILL APPOINT AN INDEPENDENT INSPECTION AND TESTING AGENCY. THE COST OF INSPECTION SHALL BE PAID BY THE DEPARTMENTAL REPRESENTATIVE. WORK WILL BE INSPECTED AS REQUIRED BY THE DEPARTMENTAL REPRESENTATIVE TO DETERMINE CONFORMANCE TO THE DRAWINGS AND SPECIFICATIONS.
5. THESE DRAWINGS SHOW THE COMPLETED STRUCTURE. THE CONTRACTOR SHALL HAVE THE SOLE RESPONSIBILITY FOR THE DESIGN, ERECTION, OPERATION, MAINTENANCE, AND REMOVAL OF TEMPORARY SUPPORTS, EXCAVATION SHORING, STRUCTURES, AND FACILITIES, AND THE DESIGN AND EXECUTION OF CONSTRUCTION METHODS REQUIRED IN THEIR USE.
6. THE USE OF THESE DRAWINGS SHALL BE STRICTLY LIMITED TO THE INSTRUCTIONS IN THE REVISION BLOCK. BUILDING FROM THESE DRAWINGS SHALL PROCEED ONLY WHEN ISSUED FOR CONSTRUCTION.
7. THE SCOPE OF THE WORK DEPENDS ON THE SITE CONDITIONS. NOTIFY THE DEPARTMENTAL REPRESENTATIVE WHERE ON-SITE CONDITIONS MAY REQUIRE MODIFICATIONS TO THE CONTRACT DOCUMENTS.
8. BEFORE ALL EXCAVATION, THE CONTRACTOR MUST VERIFY THE EXISTENCE OF PUBLIC UTILITY SERVICES AND THEIR ELEVATIONS. THE CONTRACTOR IS RESPONSIBLE FOR DIVERTING OR RELOCATING OF CONDUITS, WATER, SEWER OR POWER LINES WHICH INTERFERE WITH THE EXECUTION OF THE WORKS AND OBTAINING THE AUTHORIZATION OF THE PROPER ORGANIZATION. PROVIDE MIN. 48HRS NOTICE TO PCA PRIOR TO EXCAVATION. PCA REPRESENTATIVE TO BE ON SITE FOR DURATION OF EXCAVATION. IF ARCHEOLOGICAL ARTIFACTS ARE FOUND, STOP WORK IMMEDIATELY AND NOTIFY PCA REPRESENTATIVE.

LEGEND

- EXTENT OF CONSTRUCTION
- ▒ MASONRY APPROACH WALLS
- ▣ PARKS CANADA OFFICE BUILDING AND PRIVATE RESIDENCE
- ▤ CONCRETE SURFACE
- ▥ FLAGSTONE
- ▧ EXCAVATION
- ▨ TEMPORARY ACCESS ROAD



PLAN: SCOPE OF WORK 01 S01
SCALE: 1:300

Parcs Canada Parks Canada

Canadä

JOHN G. COOKE & ASSOCIATES LTD.
CONSULTING ENGINEERS
17 FITZGERALD ROAD SUITE 200
OTTAWA, ONT. K2H 9G1
(613) 226-8718 FAX (613) 226-7424
E-MAIL: mailbox@jcooke.com
WEB SITE: www.jcooke.com

17026

17026-S01 DRAWING 2 OF 7

DRAWING NO. DRAWING NAME

REFERENCE DRAWINGS			
5	2017/08/21	ISSUED FOR BID	C.P. L.M.
4	2017/07/12	100% SUBMISSION	C.P. L.M.
3	2017/04/03	66% SUBMISSION	C.P. L.M.
2	2017/02/14	33% SUBMISSION	C.P. L.M.
1	2017/01/30	CONCEPT DESIGN	C.P. L.M.

NO.	DATE	DESCRIPTION	Drawn by	Approved
			Dessine par	Approuve

REVISIONS

A	A Detail number	A Numero de detail
B	B Sheet number	B Sur feuille numero

Linear dimensions in millimeters Dimensions lineaires en millimetres

PROFESSIONAL ENGINEER
LICENSED
J.G. COOKE
JUL 21, 17
PROVINCE OF ONTARIO

PARKS CANADA EASTERN ONTARIO FIELD UNIT

Type of Record / Type d'enregistrement

Project title / Titre du projet
POONAMALIE LOCK 32 HERITAGE STONE MASONRY REPAIRS

Drawing title / Titre du dessin

GENERAL ARRANGEMENT KEY PLAN

Plot Scale / Echelle
1:1 (Arch D 24x36 Plot Size)

Drawn by/ Dessine par C.P. Date 2017/07/06

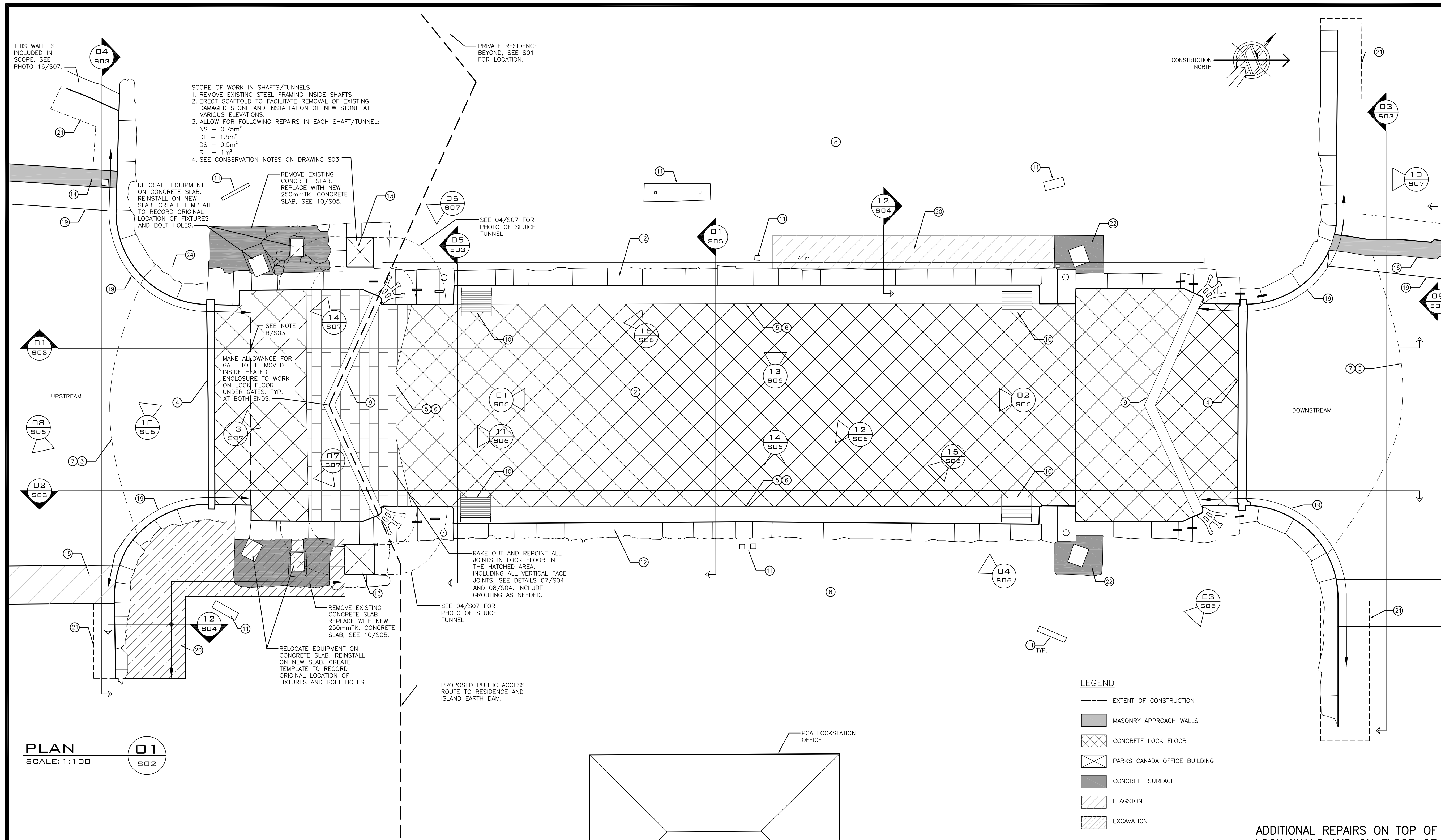
Field Recording by / Releve-Terminé par L.M. & J.C. & C.P. Date 2016/11/21

Approved by / Approuve par L.M. Date 2017/07/27

Checked by/ Verifie par J.C. Date 2017/07/27

Project No./ No. du projet 17026 Asset No. Sheet No./ Feuille No.

Drawing Re No./No. du Dessin 17026-S01-R04 **S01**



PLAN
SCALE: 1:100
01
S02

SCOPE OF WORK (SEE DETAILS ON DWG S01 AND S02)

1. INSTALL APPROVED COFFERDAM STRUCTURES UPSTREAM AND DOWNSTREAM BEYOND EXTENT OF STONE MASONRY AS REQUIRED, TO ALLOW WORK. COFFERDAM DESIGN INSTALLATION TO BE REVIEWED AND CERTIFIED BY AN ENGINEER RETAINED BY THE CONTRACTOR, WHO IS REGISTERED IN THE PROVINCE OF ONTARIO AND EXPERIENCED IN COFFERDAM DESIGN AND CONSTRUCTION, BEFORE PROCEEDING WITH ANY REPAIRS. COFFERDAMS MUST BE LOCATED NO CLOSER THAN 600mm TO MASONRY WALLS REQUIRING STONE REPAIR. THE CONTRACTOR MAY CHOOSE TO LOCATE THE COFFERDAMS FURTHER UPSTREAM AND DOWNSTREAM IN ORDER TO BETTER SEAL THE EDGE CONDITIONS AT THE COFFERDAMS. CONSTRUCT UPSTREAM COFFERDAM TO CREST AT 122.63m, AND DOWNSTREAM COFFERDAM TO CREST AT 122.63m. REFER TO APPENDIX A FOR BATHYMETRY SURVEY AND BOREHOLE LOG. THIS IS FOR INFORMATION ONLY. CONTRACTOR IS RESPONSIBLE TO VERIFY ALL SITE CONDITIONS.
 - a) EDGE CONDITION CONSISTS OF NATURAL SLOPED ROCKY SAND BANK, SEE DETAIL 8/S05.
 - b) EDGE CONDITION CONSISTS OF CONCRETE RETAINING WALL FOR WHARF. SEE DETAIL 7/S05.
2. CONSTRUCT WINTER PROTECTION ENCLOSURE AS REQUIRED TO COMPLETE THE WORK WITHIN THE REQUIREMENTS OF THE PROJECT, SEE 01/S05.
3. INSTALL UPSTREAM AND DOWNSTREAM TURBIDITY CURTAINS, PRIOR TO START OF WORK. INSTALL CURTAINS AT LEAST 1m BEYOND COFFERDAM. AFTER MARCH 14, RELOCATE 1m BEYOND LOG GAINS. INSTALL CURTAINS AS TO EXCLUDE FISH FROM WORK AREA. KEEP TURBIDITY CURTAINS FREE OF ICE.
4. INSTALL STOP LOGS IN STOP LOG GAIN TO COMPLETE THE WORK INSIDE THE LOCK IF REQUIRED, BETWEEN MARCH AND MAY DEADLINES. STOP LOGS TO BE INSTALLED PRIOR TO DISMANTLING COFFERDAMS. STOP LOGS TO BE PROVIDED TO THE CONTRACTOR, ON LOAN FROM PCA. CONTRACTOR IS RESPONSIBLE FOR ARRANGING DELIVERY OF STOP LOGS TO SITE, INSTALLING THEM, REMOVING THEM AND RETURNING THEM TO PCA. THE STOP LOGS MUST BE SEALED ON THE OUTSIDE FACE WITH A POLYSHEET OR OTHER MEANS TO PREVENT THE LOGS FROM LEAKING IF NOT SEALED.

5. MASONRY REPAIRS ALONG LOCK MASONRY WALLS (ALL WALLS WITHIN OUTLINE SHOWN UNLESS NOTED). SEE 1/S03 AND 2/S03.
6. GROUTING OF MASONRY WALLS, SEE 09/S04.
7. RELOCATE TURBIDITY CURTAINS TO OUTSIDE LOG GAINS AND DISMANTLE COFFERDAM AFTER COMPLETION OF THE REPAIRS OUTSIDE OF LOG GAINS, BUT NO LATER THAN MARCH 14TH, 2018, WHICHEVER IS EARLIER.
8. PROTECT EARTH DAMS FROM RUTTING AND OTHER DAMAGE IF USED FOR TEMPORARY ACCESS.
9. LOCK GATES. NO WORK ON GATES IS INCLUDED IN SCOPE.
10. LADDER TO BE REMOVED AND DISPOSED OFF SITE, FABRICATE AND PAINT NEW LADDER. INSTALL AFTER MASONRY REPAIRS ARE COMPLETE. SEE DRAWING S03 FOR SCOPE.
11. PARKS CANADA SIGNAGE AND MISCELLANEOUS FURNITURE AT THE EDGE OF THE LOCKS TO BE PROTECTED FROM DAMAGE DURING CONSTRUCTION.
12. SKYWARD FACING JOINTS IN STONE/CONCRETE CAP INCLUDED IN SCOPE. REPOINT JOINTS AS PER 02/S04.
13. SLUICE TUNNEL/SHAFT MASONRY TO BE REPAIRED. SEE DRAWING S02 AND S03. SHAFT WALLS ARE INCLUDED IN REPOINTING SCOPE. REMOVE STEEL BRACING AFTER WALL HAS BEEN REPAIRED AND STABILIZED. SEE PHOTOS 01, 02 AND 03/S07
14. UPSTREAM STONE MASONRY WALL TO BE REPAIRED. JOINTS INCLUDED IN REPOINTING SCOPE, SEE 07 & 08/S04.

15. UPSTREAM EXISTING CONCRETE WHARF. FLAGSTONE JOINTS TO REPOINTED. SOME STONE RESET IS REQUIRED.
16. DOWNSTREAM STONE MASONRY WALL TO BE REPAIRED. EXCAVATION, SOME DISMANTLING, REBUILD AND BACKFILL REQUIRED. SEE 09/S05.
17. DOWNSTREAM EXISTING WOOD CRIB WHARF. N.I.C.
18. REMOVE AND REPLACE CONCRETE APRONS SUPPORTING LOCK HARDWARE., SEE 10/S05.
19. WORK ON SECTIONS OF APPROACH WALLS, OVER WATER OUTSIDE OF LOG GAINS, TO 2m INSIDE OF LOG GAINS MUST BE COMPLETED PRIOR TO COMMENCING WORK INSIDE OF LOCK.
20. CAREFULLY EXCAVATE BEHIND MASONRY WALL TO DEPTH OF 1.8m. CONSOLIDATE MASONRY WALL FROM BEHIND AND REPOINT. BACKFILL AND RESTORE WITH S00, SEE 12/S04.
21. CAREFULLY EXCAVATE TO DEPTH OF 600mm ADJACENT TO WALL REPOINT JOINTS AS PER 02/S04, BACKFILL AFTER AS PER DETAIL 11/S05.
22. CONCRETE APRON SUPPORTING LOCK HARDWARE. REPAIR AS REQUIRED, SEE 10/S04.
23. INSTALL ADDITIONAL TURBIDITY CURTAIN ON UPSTREAM SIDE OF THE DOWNSTREAM COFFERDAM. ONCE TURBID WATER GENERATED BY IN-WATER WORK IS MITIGATED. REMOVE TURBIDITY CURTAIN, PRIOR TO Dewatering. REINSTALL TURBIDITY CURTAIN BEFORE COFFERDAM REMOVAL.
24. REMOVE SHRUBS AND FLOWERBED. REINSTATE WITH S00.

LEGEND OF MASONRY REPAIRS:

1. LARGE DUTCHMAN REPAIR. SEE 05/S04. FOR PRICING, AVERAGE REPAIR IS 800mm by 400mm (0.32m²) by 200mm Dp. (SPECIFICATIONS: SECTION 04 03 41, CLAUSE 3.8) TOOL FACE OF DUTCHMAN AS 02/S05.
2. SMALL DUTCHMAN REPAIR. SEE 04/S04. FOR PRICING, AVERAGE REPAIR IS 300mm by 150mm (0.05m²) by 100mm Dp. (SPECIFICATIONS: SECTION 04 03 41, CLAUSE 3.8) TOOL FACE OF DUTCHMAN AS 02/S05.
3. FRACTURED STONE REPAIRED IN-SITU. SEE 01/S04. (SPECIFICATIONS: SECTION 04 03 41, CLAUSE 3.7)
4. STEEL PIN INSERT REMOVAL. REMOVE EXISTING PIN AND FILL WITH DUTCHMAN PLUG.
5. REMOVE EXISTING CONCRETE PATCH AND INSTALL STONE DUTCHMAN REPAIR. APPROXIMATE SIZE 400x200mm AS FOR 1. CARVE FACE OF DUTCHMAN TO MATCH EXISTING
6. NEW STONE, SEE 09/S04 SIMILAR, FOR RESET. SEE ALSO 18 FOR SIZE. TOOL FACE OF STONE AS 02/S05.
7. REMOVE AND RESET LARGE STONE. SEE 09/S04. ASSUME AVERAGE STONE SIZE OF 450x800x500dp./UNIT. (0.36m²)
8. EDGE DUTCHMAN REPAIRS. APPLY TO STONE ARRIS OF EXISTING STONE, TO REDUCE WIDTH OF MORTAR JOINT TO 35mm, SEE DETAIL 03/S05.

ADDITIONAL REPAIRS ON TOP OF LOCK WALLS AND ON FLOOR OF LOCKS FOR PRICING:

- FOR PRICING, ALLOW THE FOLLOWING ADDITIONAL QUANTITIES BEYOND THOSE SHOWN ON PLAN 01/S03.
1. ALLOW FOR ADDITIONAL 5m² OF STONE REMOVE AND RESET.
 2. ALLOW FOR ADDITIONAL 5m² OF LARGE DUTCHMAN REPAIRS.
 3. ALLOW FOR ADDITIONAL 2m² OF SMALL DUTCHMAN REPAIRS.
 4. ALLOW FOR ADDITIONAL 10 IN-SITU FRACTURE REPAIRS.
 5. ALLOW FOR 8m² OF SURFACE CONCRETE REPAIRS, SEE 10/S04.
 6. ALLOW FOR 4m² DEEP SURFACE CONCRETE REPAIRS AS 05/S05.
 7. ALLOW FOR 10 STEEL PIN INSERT REMOVALS.
 8. ASSUME 5m² OF FLAGSTONES ON THE UPSTREAM JETTY MUST BE RESET IN GROUT.

Parcs Canada Parks Canada

Canada

JOHN G. COOKE & ASSOCIATES LTD. CONSULTING ENGINEERS
17 FITZGERALD ROAD SUITE 200 (613) 226-8718 E-MAIL mailbox@jgcooke.com WEB SITE www.jgcooke.com

OTTAWA, ONT. K2H 9G1
FAX (613) 226-7424

17026

17026-S02 DRAWING 3 OF 7

DRAWING NO. DRAWING NAME			
REFERENCE DRAWINGS			
5	2017/08/21	ISSUED FOR BID	C.P. L.M.
4	2017/07/12	100% SUBMISSION	C.P. L.M.
3	2017/04/03	66% SUBMISSION	C.P. L.M.
2	2017/02/14	33% SUBMISSION	C.P. L.M.
1	2017/01/30	CONCEPT DESIGN	C.P. L.M.
NO.	DATE	DESCRIPTION	Drawn by / Approved Dessine par / Approuve

REVISIONS			
A	A Detail number	A Numero de detail	
B	B Sheet number	B Sur feuille numero	

Linear dimensions in millimeters Dimensions lineaires en millimetres



PARKS CANADA
EASTERN ONTARIO FIELD UNIT

Type of Record /
Type d'enregistrement

Project title / Titre du projet
**POONAMALIE LOCK 32
HERITAGE STONE MASONRY REPAIRS**

Drawing title / Titre du dessin

PLAN

Plot Scale / Echelle
1:1 (Arch D 24x36 Plot Size)

Drawn by / Dessine par
C.P. Date
2017/01/12

Field Recording by /
Releve-Temoin par
L.M. & J.C. & C.P. Date
2016/11/21

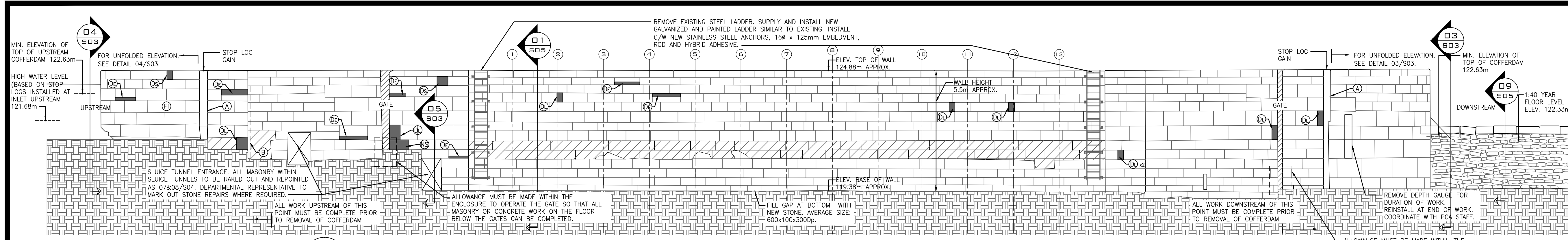
Approved by / Approuve par
L.M. Date
2017/07/27

Checked by / Verifie par
J.C. Date
2017/07/27

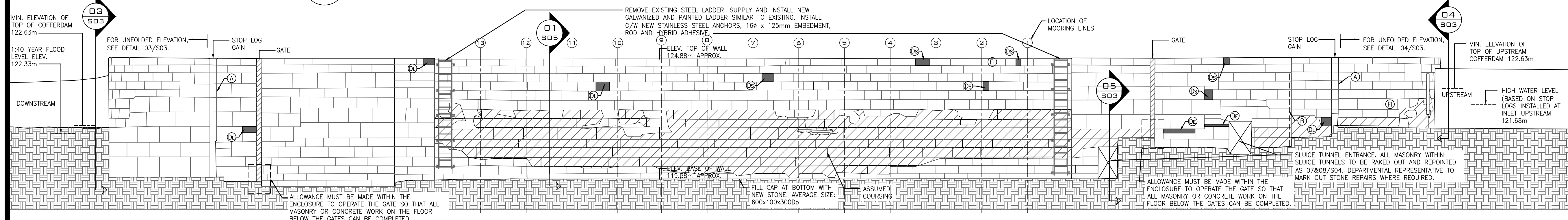
Project No./ No. du projet 17026	Asset No.	Sheet No./ Feuille No. S02
Drawing Re No./No. du Dessin 17026-S02-R04		

JOHN G. COOKE & ASSOCIATES LTD.
CONSULTING ENGINEERS
 17 FITZGERALD ROAD SUITE 200
 OTTAWA, ONT. K2H 9G1
 (613) 226-8718 FAX (613) 226-7424
 E-MAIL: mailbox@jgcooke.com
 WEB SITE: www.jgcooke.com

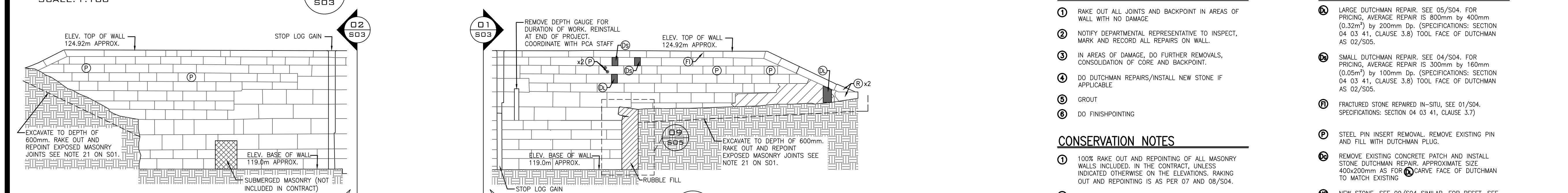
17026



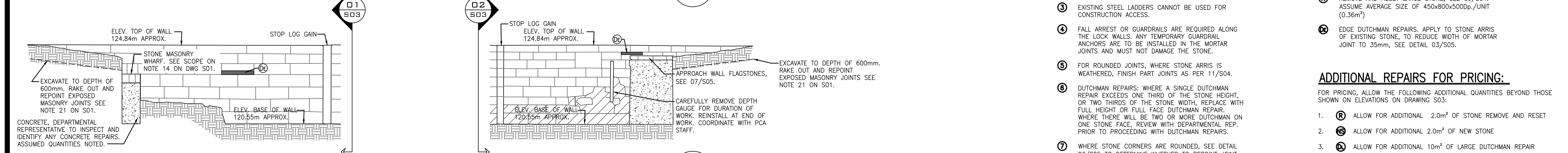
WEST WALL ELEVATION
SCALE: 1:100



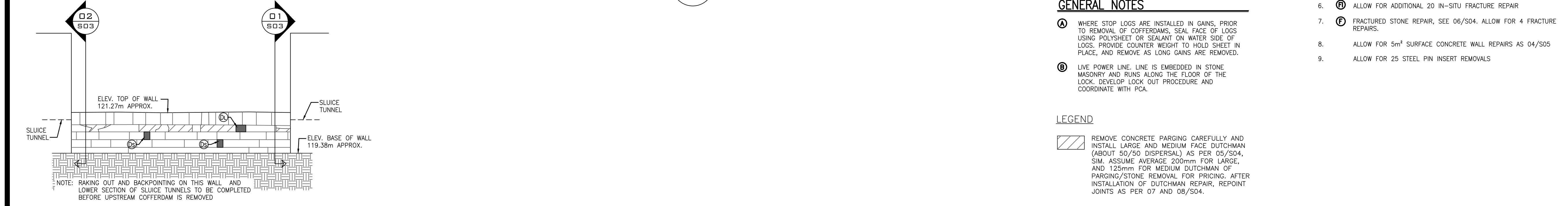
EAST WALL ELEVATION
SCALE: 1:100



DOWNSTREAM APPROACH WALLS (UNFOLDED ELEVATIONS)
SCALE: 1:100



UPSTREAM APPROACH WALLS (UNFOLDED ELEVATIONS)
SCALE: 1:100



SOUTH ELEVATION
SCALE: 1:100

MASONRY REPAIR PROCEDURE:

- 1 RAKE OUT ALL JOINTS AND BACKPOINT IN AREAS OF WALL WITH NO DAMAGE.
- 2 NOTIFY DEPARTMENTAL REPRESENTATIVE TO INSPECT, MARK AND RECORD ALL REPAIRS ON WALL.
- 3 IN AREAS OF DAMAGE, DO FURTHER REMOVALS, CONSOLIDATION OF CORE AND BACKPOINT.
- 4 DO DUTCHMAN REPAIRS/INSTALL NEW STONE IF APPLICABLE.
- 5 GROUT.
- 6 DO FINISHPOINTING.

CONSERVATION NOTES

- 1 100% RAKE OUT AND REPOINTING OF ALL MASONRY WALLS INCLUDED IN THE CONTRACT, UNLESS INDICATED OTHERWISE ON THE ELEVATIONS. RAKING OUT AND REPOINTING IS AS PER 07 AND 08/S04.
- 2 FOR STONE REPLACEMENT, ASSUMED STONE DEPTH IS SHOWN ON 07 AND 08/S04. ALL STONE SIZE TO BE MEASURED PRIOR TO ORDERING REPLACEMENT STONES, TO MATCH EXISTING.
- 3 EXISTING STEEL LADDERS CANNOT BE USED FOR CONSTRUCTION ACCESS.
- 4 FALL ARREST OR GUARDRAILS ARE REQUIRED ALONG THE LOCK WALLS. ANY TEMPORARY GUARDRAIL ANCHORS ARE TO BE INSTALLED IN THE MORTAR JOINTS AND MUST NOT DAMAGE THE STONE.
- 5 FOR ROUNDED JOINTS, WHERE STONE ARRIS IS WEATHERED, FINISH PART JOINTS AS PER 11/S04.
- 6 DUTCHMAN REPAIRS: WHERE A SINGLE DUTCHMAN REPAIR EXCEEDS ONE THIRD OF THE STONE HEIGHT, OR TWO THIRDS OF THE STONE WIDTH, REPLACE WITH FULL HEIGHT OR FULL FACE DUTCHMAN REPAIR. WHERE THERE WILL BE TWO OR MORE DUTCHMAN ON ONE STONE FACE, REVIEW WITH DEPARTMENTAL REP. PRIOR TO PROCEEDING WITH DUTCHMAN REPAIRS.
- 7 WHERE STONE CORNERS ARE ROUNDED, SEE DETAIL 06/S05 TO DETERMINE WHETHER TO REPOINT JOINT OR DO SMALL DUTCHMAN REPAIR, AS 04/S04. REVIEW WITH DEPARTMENTAL REPRESENTATIVE. PRIOR TO PROCEEDING WITH DUTCHMAN REPAIRS.

GENERAL NOTES

- A WHERE STOP LOGS ARE INSTALLED IN GAINS, PRIOR TO REMOVAL OF COFFERDAMS, SEAL FACE OF LOGS USING POLYSHEET OR SEALANT ON WATER SIDE OF LOGS. PROVIDE COUNTER WEIGHT TO HOLD SHEET IN PLACE, AND REMOVE AS LONG GAINS ARE REMOVED.
- B LIVE POWER LINE. LINE IS EMBEDDED IN STONE MASONRY AND RUNS ALONG THE FLOOR OF THE LOCK. DEVELOP LOCK OUT PROCEDURE AND COORDINATE WITH PCA.

LEGEND

- Remove concrete patching carefully and install large and medium face dutchman (about 50/50 dispersal) as per 05/S04, SIM. ASSUME AVERAGE 200mm FOR LARGE, AND 125mm FOR MEDIUM DUTCHMAN OF PATCHING/STONE REMOVAL FOR PRICING. AFTER INSTALLATION OF DUTCHMAN REPAIR, REPOINT JOINTS AS PER 07 AND 08/S04.

LEGEND OF MASONRY REPAIRS:

- A LARGE DUTCHMAN REPAIR. SEE 05/S04. FOR PRICING, AVERAGE REPAIR IS 800mm by 400mm (0.32m²) by 200mm Dp. (SPECIFICATIONS: SECTION 04 03 41, CLAUSE 3.8) TOOL FACE OF DUTCHMAN AS 02/S05.
- B SMALL DUTCHMAN REPAIR. SEE 04/S04. FOR PRICING, AVERAGE REPAIR IS 300mm by 160mm (0.05m²) by 100mm Dp. (SPECIFICATIONS: SECTION 04 03 41, CLAUSE 3.8) TOOL FACE OF DUTCHMAN AS 02/S05.
- F FRACTURED STONE REPAIRED IN-SITU. SEE 01/S04. SPECIFICATIONS: SECTION 04 03 41, CLAUSE 3.7).
- P STEEL PIN INSERT REMOVAL. REMOVE EXISTING PIN AND FILL WITH DUTCHMAN PLUS.
- R REMOVE EXISTING CONCRETE PATCH AND INSTALL STONE DUTCHMAN REPAIR. APPROXIMATE SIZE 400x200mm AS FOR A CARVE FACE OF DUTCHMAN TO MATCH EXISTING.
- S NEW STONE. SEE 09/S04 SIMILAR. FOR RESET, SEE ALSO R FOR SIZE. TOOL FACE OF STONE AS 02/S05.
- T REMOVE AND RESET LARGE STONE. SEE 09/S04. ASSUME AVERAGE SIZE OF 450x800x500Dp/JUNT (0.36m²)
- X EDGE DUTCHMAN REPAIRS. APPLY TO STONE ARRIS OF EXISTING STONE, TO REDUCE WIDTH OF MORTAR JOINT TO 35mm, SEE DETAIL 03/S05.

ADDITIONAL REPAIRS FOR PRICING:

FOR PRICING, ALLOW THE FOLLOWING ADDITIONAL QUANTITIES BEYOND THOSE SHOWN ON ELEVATIONS ON DRAWING S03:

1. Allow for additional 2.0m² of stone remove and reset
2. Allow for additional 2.0m² of new stone
3. Allow for additional 10m² of large dutchman repair
4. Allow for additional 10m² of small dutchman repair
5. Allow for additional 5m² of edge dutchman repair
6. Allow for additional 20 in-situ fracture repair
7. Fractured stone repair, see 06/S04. Allow for 4 fracture repairs.
8. Allow for 5m² surface concrete wall repairs as 04/S05
9. Allow for 25 steel pin insert removals

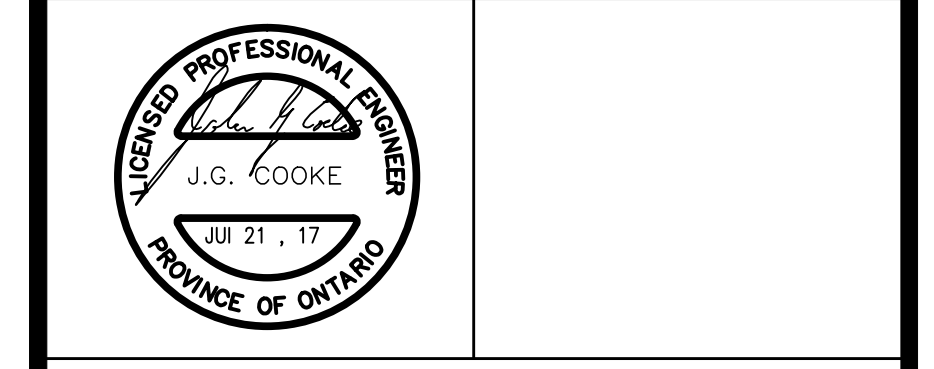
17026-S03 DRAWING 4 OF 7

REFERENCE DRAWINGS			
NO.	DATE	DESCRIPTION	Drawn by / Approved
5	2017/08/21	ISSUED FOR BID	C.P. / L.M.
4	2017/07/12	100% SUBMISSION	C.P. / L.M.
3	2017/04/03	66% SUBMISSION	C.P. / L.M.
2	2017/02/14	33% SUBMISSION	C.P. / L.M.
1	2017/01/30	CONCEPT DESIGN	C.P. / L.M.

REVISIONS

A	B	A Detail number	A Numero de detail
		B Sheet number	B Sur feuille numero

Linear dimensions in millimeters / Dimensions lineaires en millimetres



PARCS CANADA
EASTERN ONTARIO FIELD UNIT

Type of Record / Type d'enregistrement

Project title / Titre du projet

POONAMALIE LOCK 32
HERITAGE STONE MASONRY REPAIRS

Drawing title / Titre du dessin

ELEVATIONS

Plot Scale / Echelle
1:1 (Arch D 24x36 Plot Size)

Drawn by / Dessine par: C.P. Date: 2017/01/16

Field Recording by / Releve-Terminé par: L.M. & J.C. & C.P. Date: 2016/11/21

Approved by / Approuvé par: L.M. Date: 2017/07/27

Checked by / Verifié par: J.C. Date: 2017/07/27

Project No./ No. du projet: 17026 Asset No. / Feuille No. / 17026

Drawing Re No./No. du Dessin: 17026-S03-R04

S03

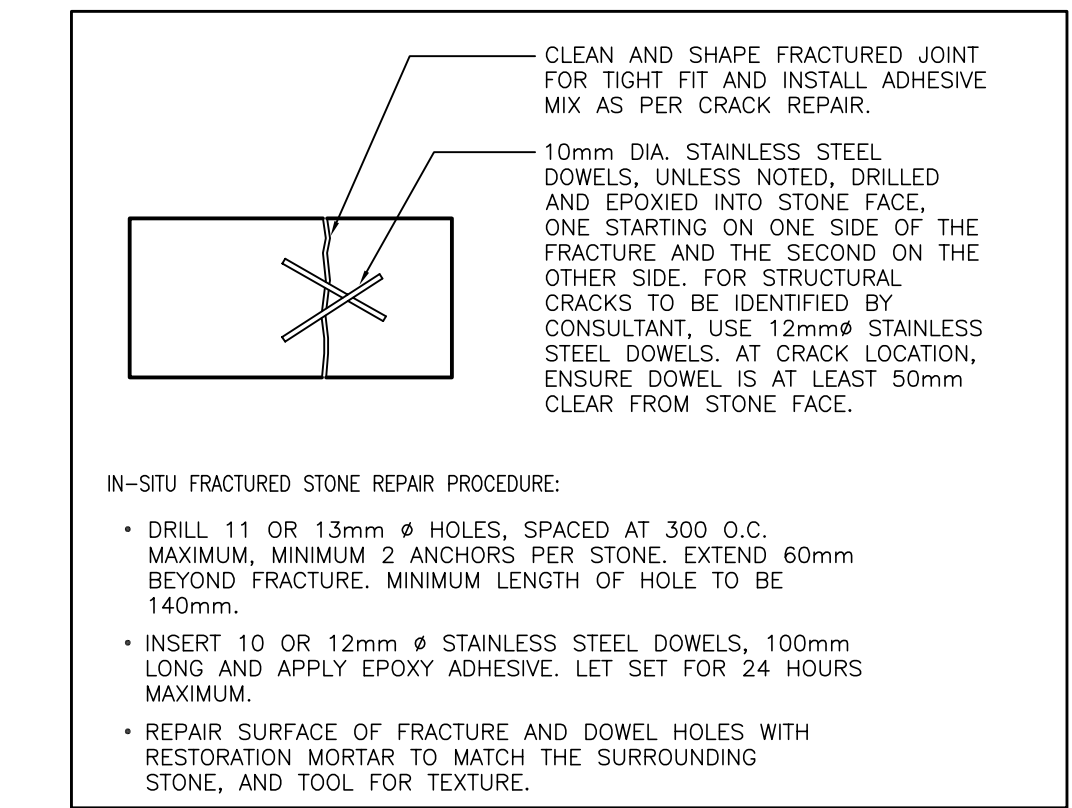
Canada

JOHN G. COOKE & ASSOCIATES LTD.
 CONSULTING ENGINEERS

17 FITZGERALD ROAD SUITE 200
 (613) 226-8718
 E-MAIL: mailbox@jgcooke.com
 WEB SITE: www.jgcooke.com

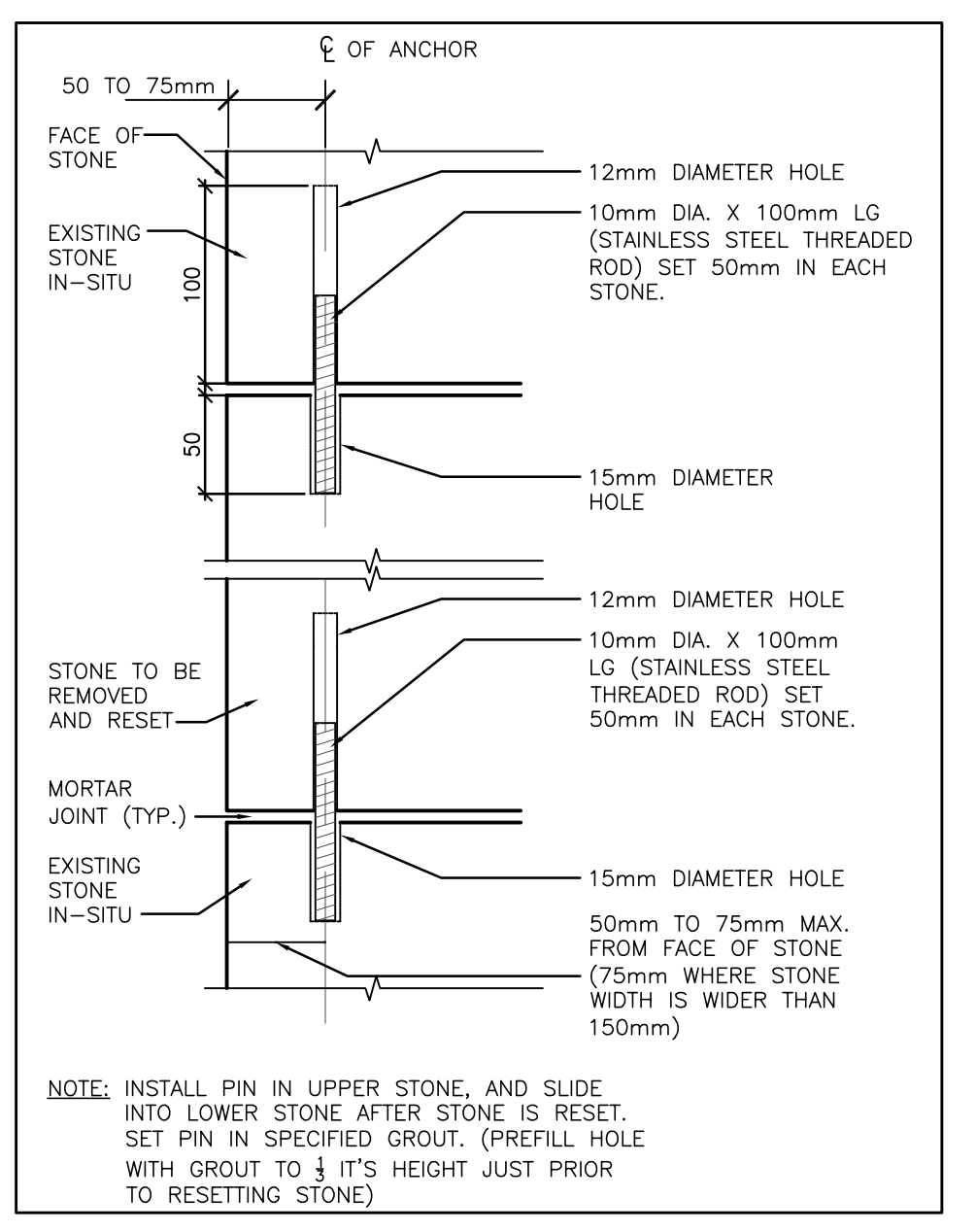
OTTAWA, ONT. K2H 9G1
 FAX (613) 226-7424

17026



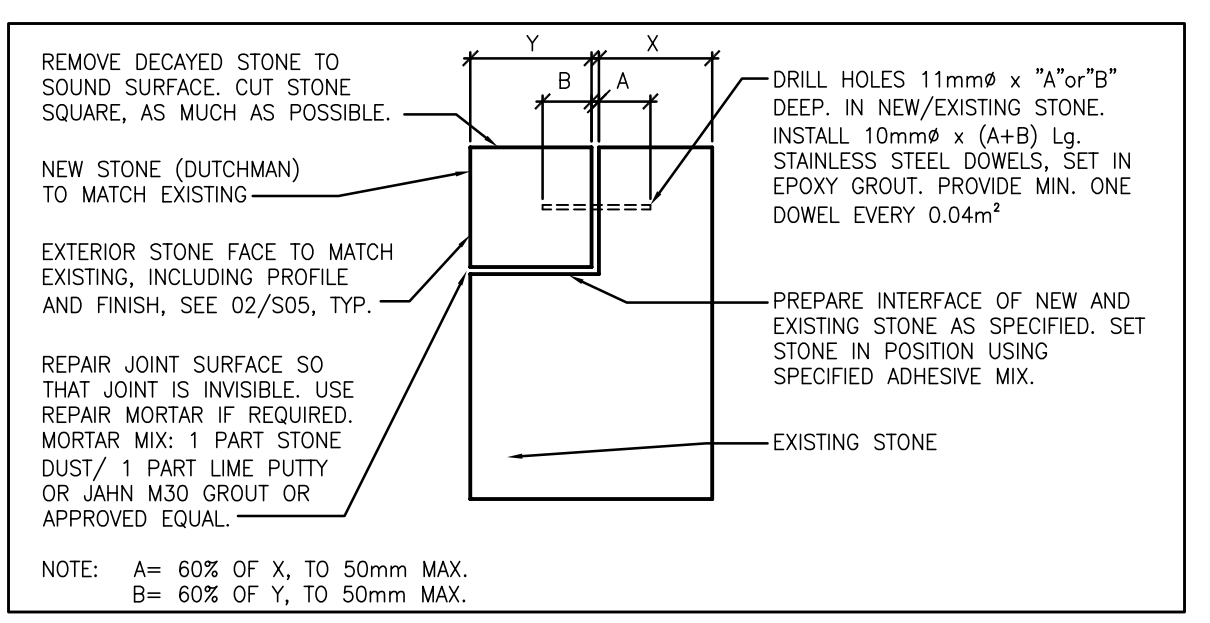
IN-SITU FRACTURED STONE REPAIR
 SCALE: NTS

01
 S04



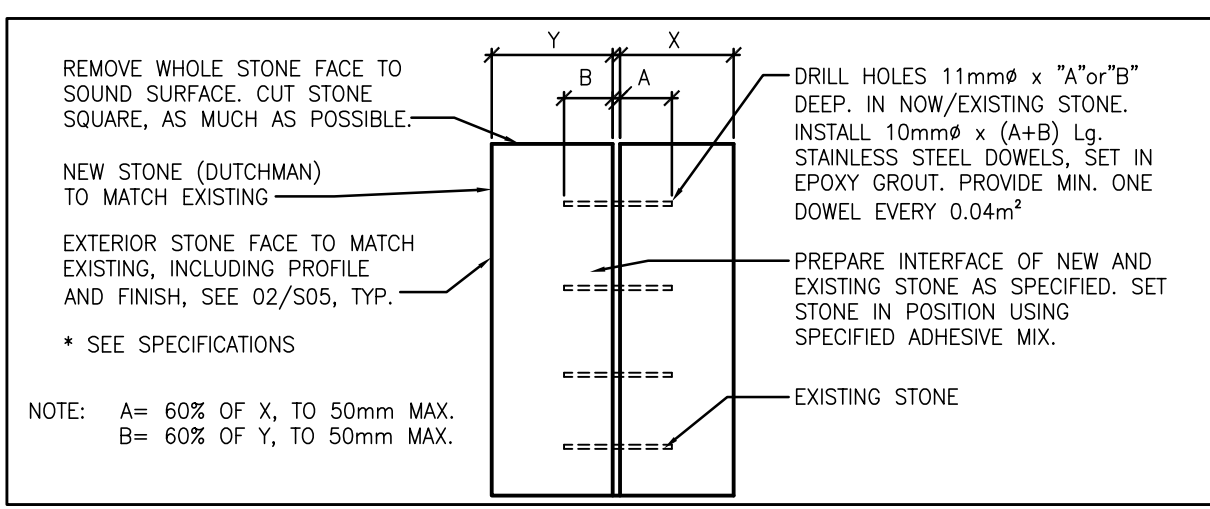
TYPICAL PIN DETAIL
 SCALE: NTS

03
 S04



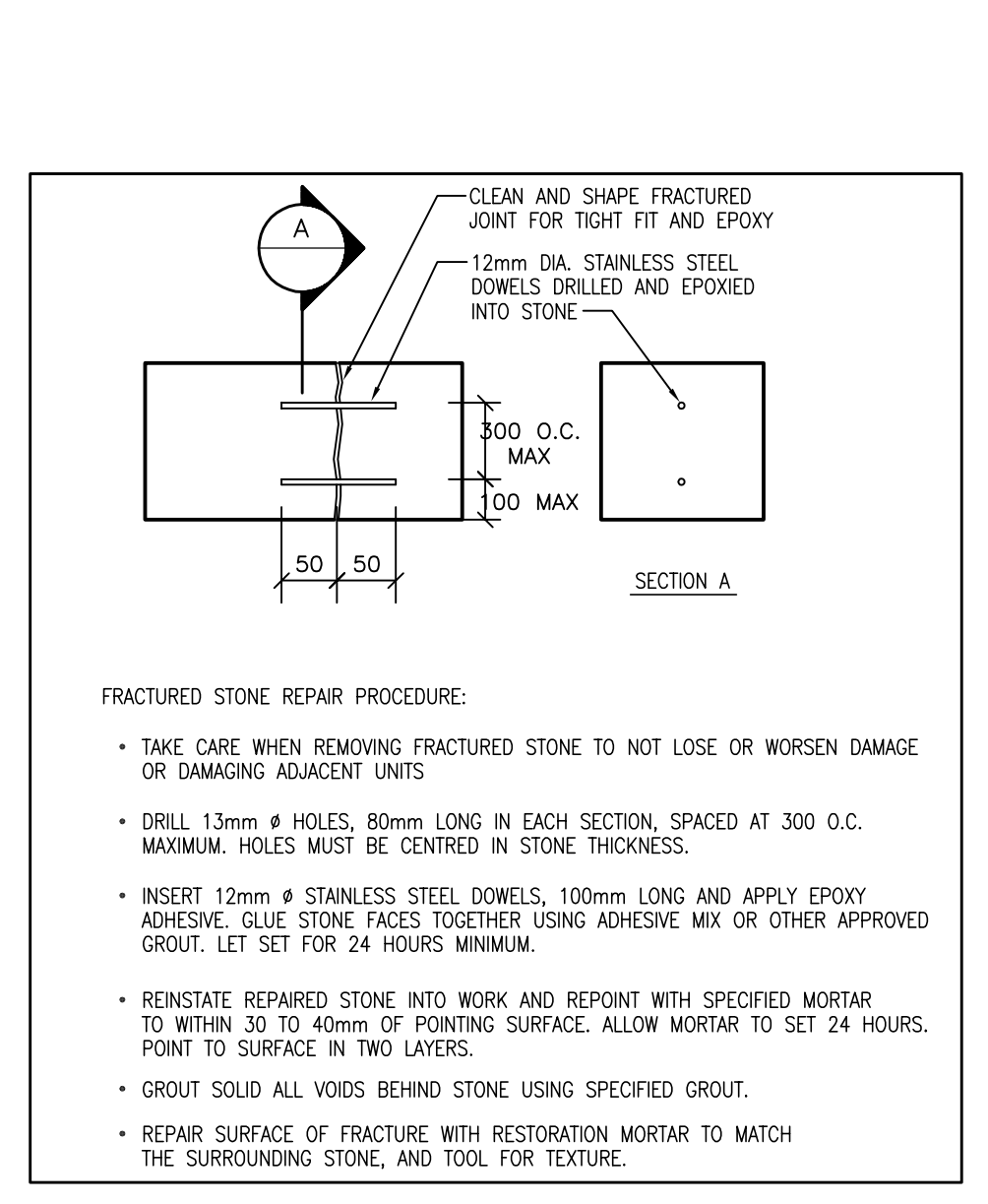
DUTCHMAN REPAIR DETAIL (SMALL)
 SCALE: NTS

04
 S04



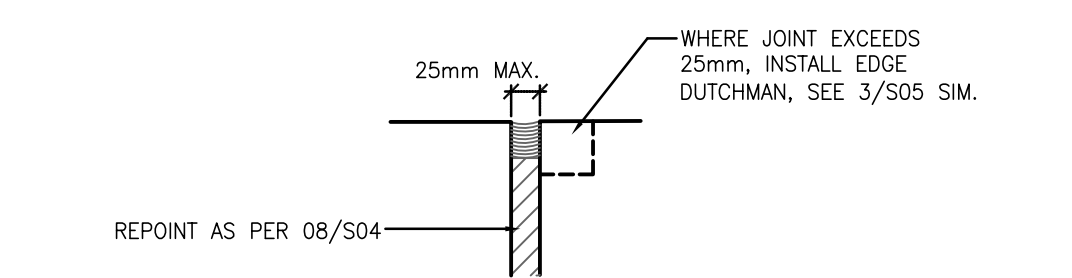
DUTCHMAN REPAIR DETAIL (LARGE)
 SCALE: NTS

05
 S04



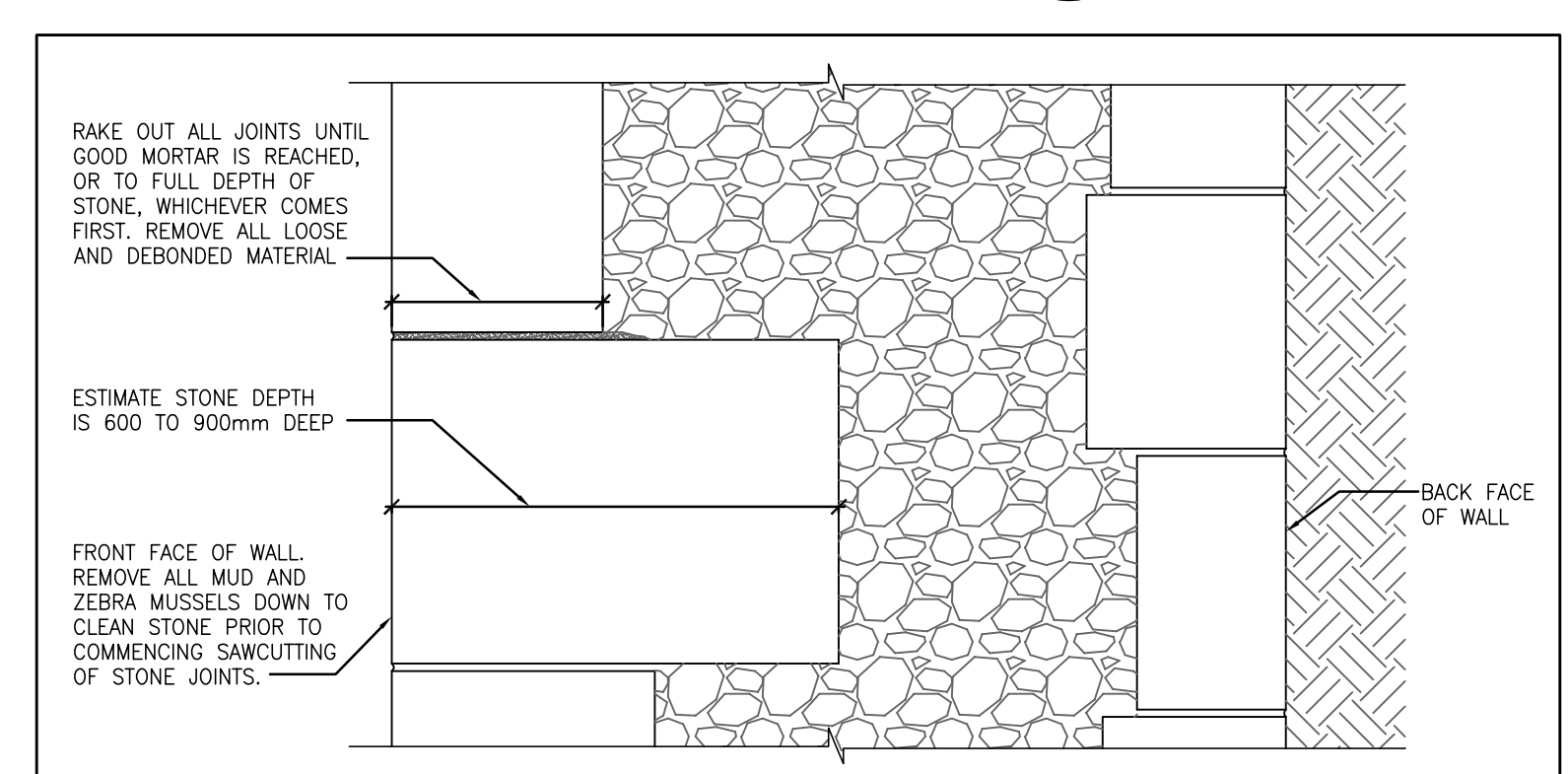
REPAIR OF FRACTURED STONE (WHERE STONE REMOVED)
 SCALE: NTS

06
 S04



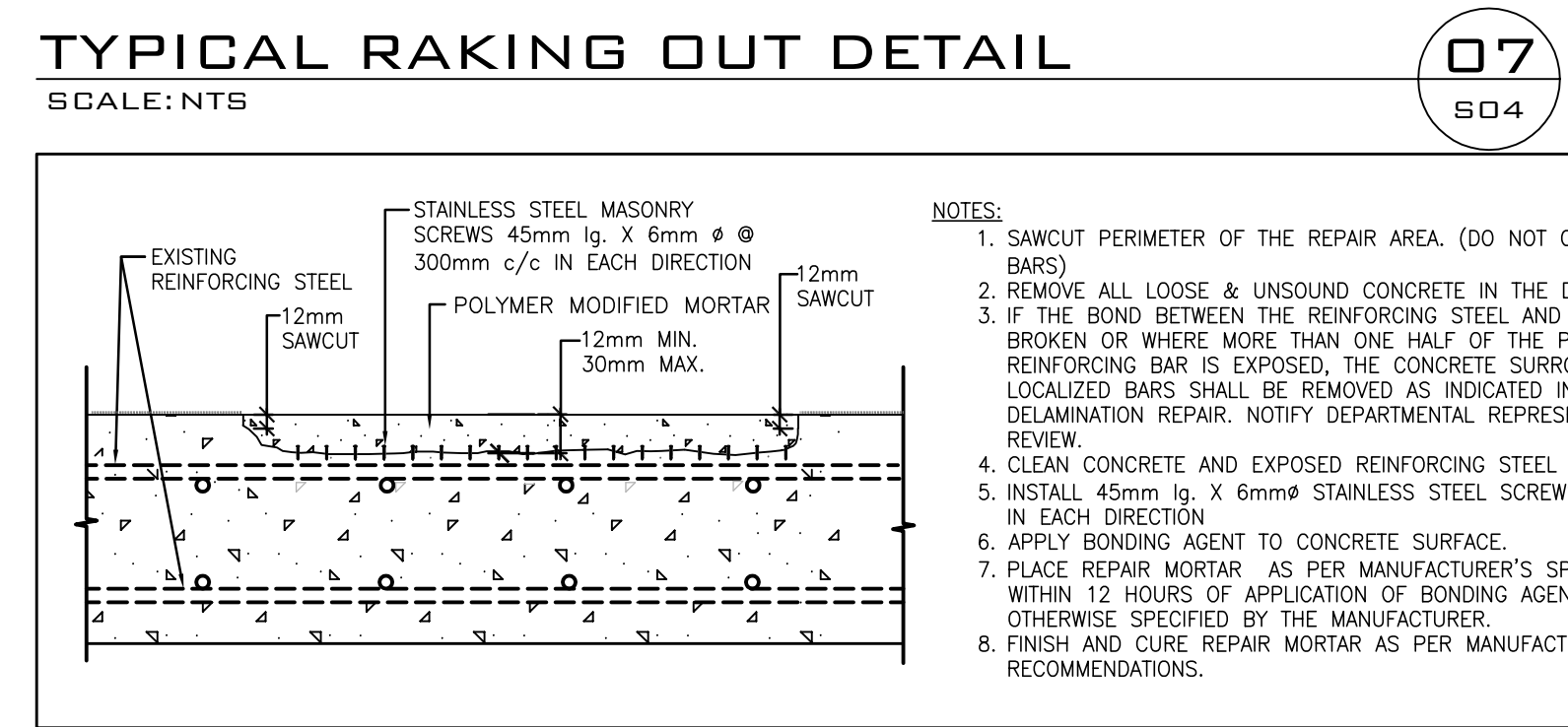
CAPSTONE VERTICAL AND HORIZONTAL JOINTS FOR LOCK WALLS
 SCALE: NTS

02
 S04



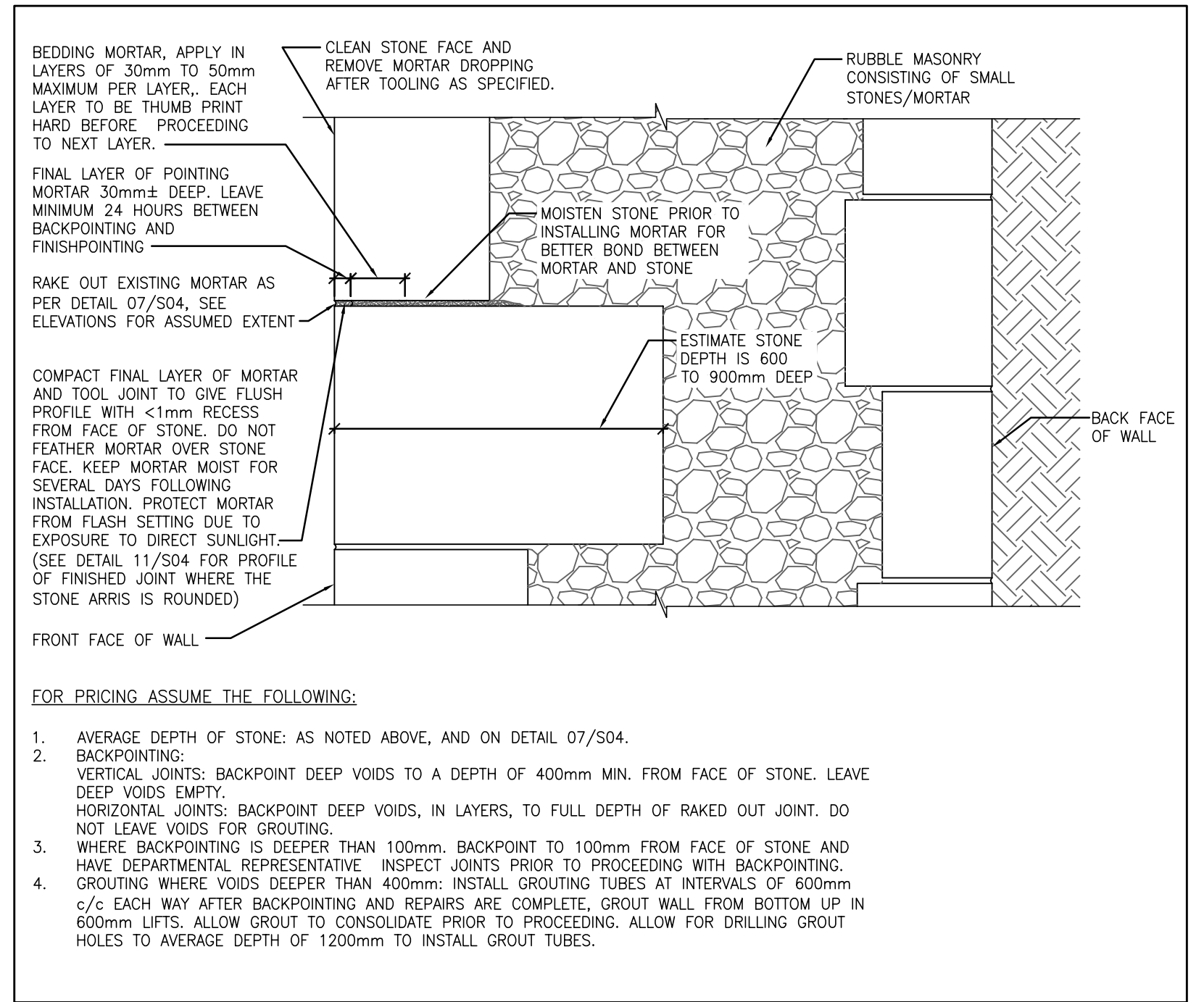
TYPICAL RAKING OUT DETAIL
 SCALE: NTS

07
 S04



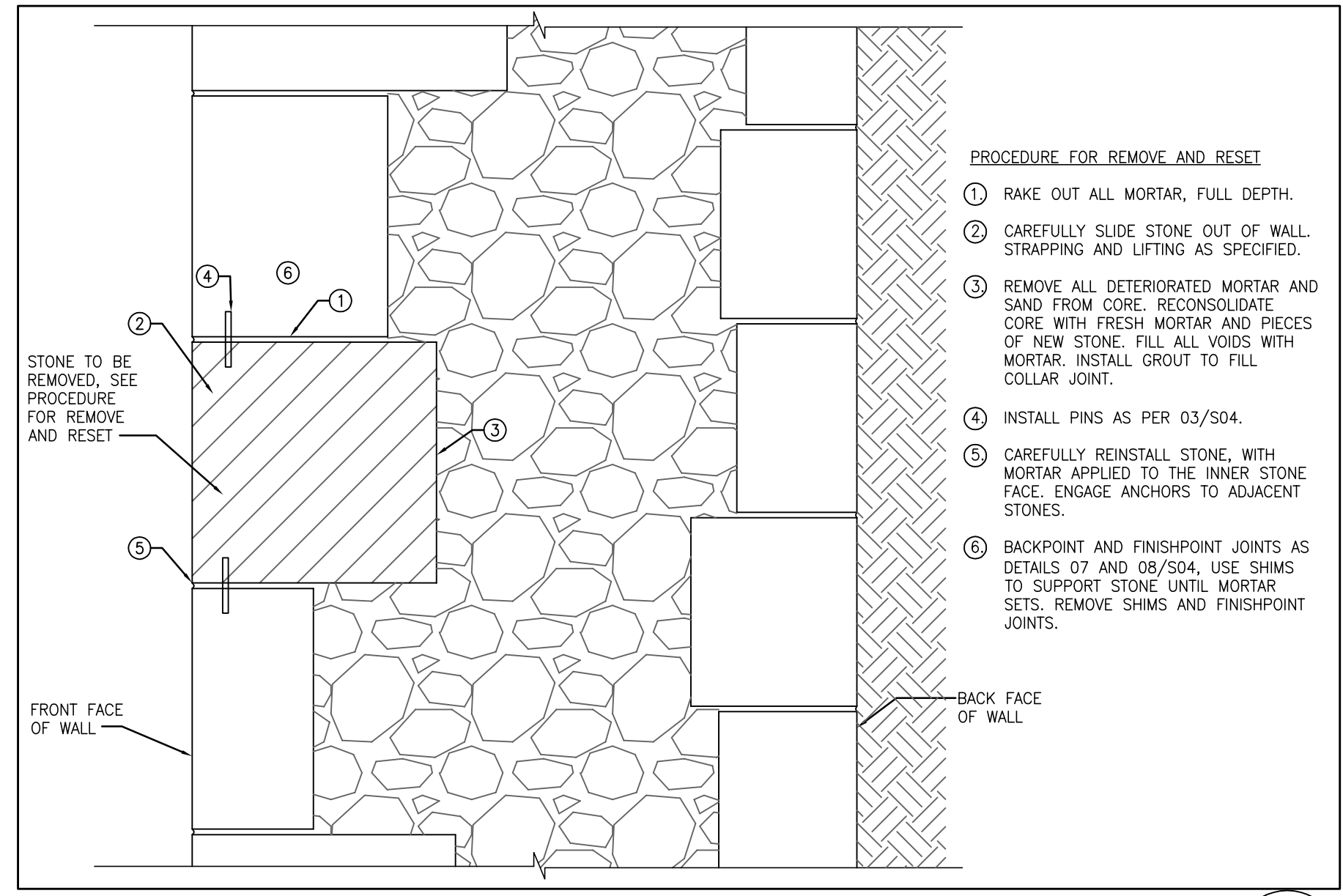
SHALLOW SURFACE CONCRETE REPAIRS (SKYWARD FACES)
 SCALE: NTS

10
 S04



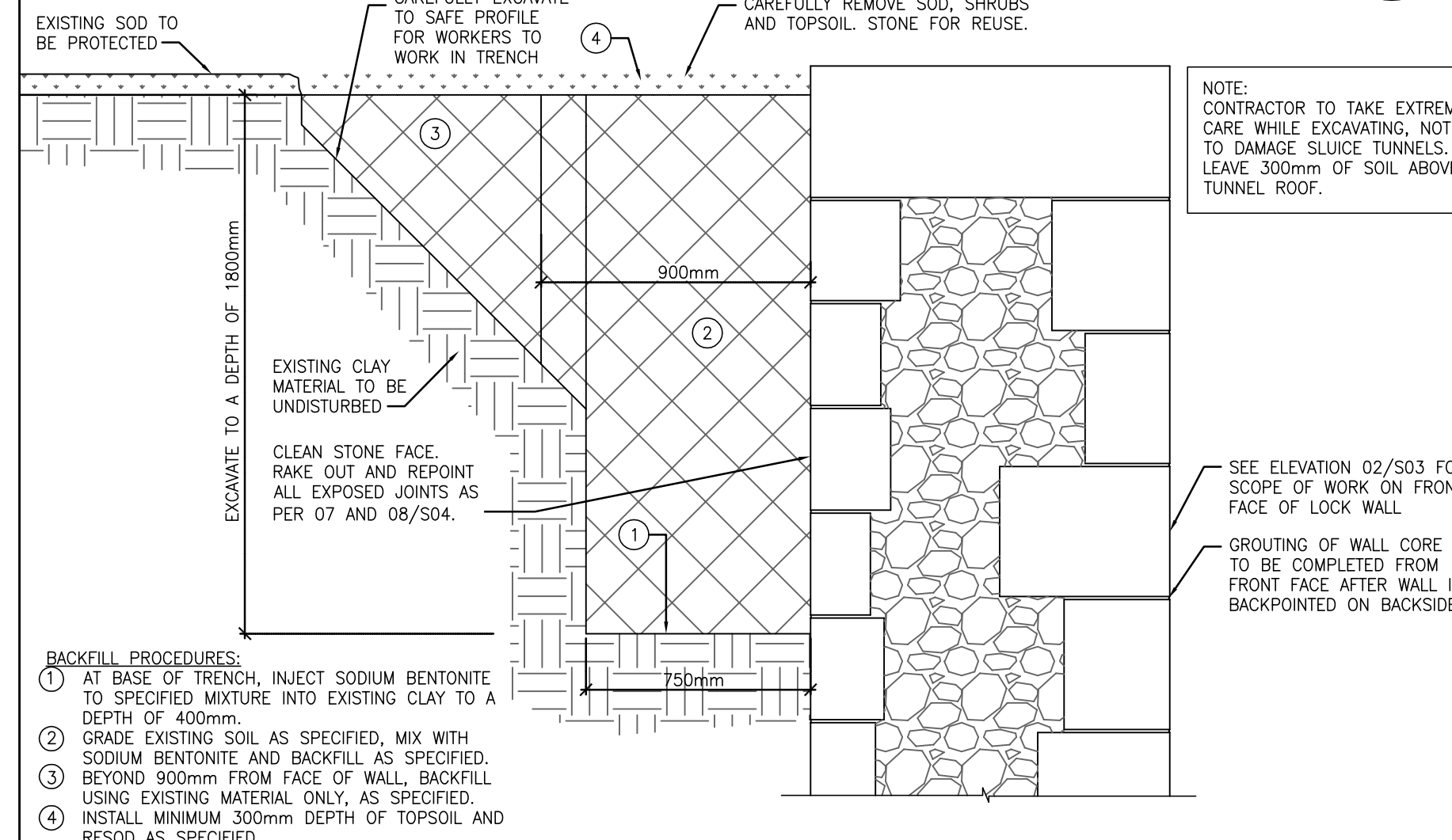
TYPICAL REPOINTING DETAIL
 SCALE: NTS

08
 S04



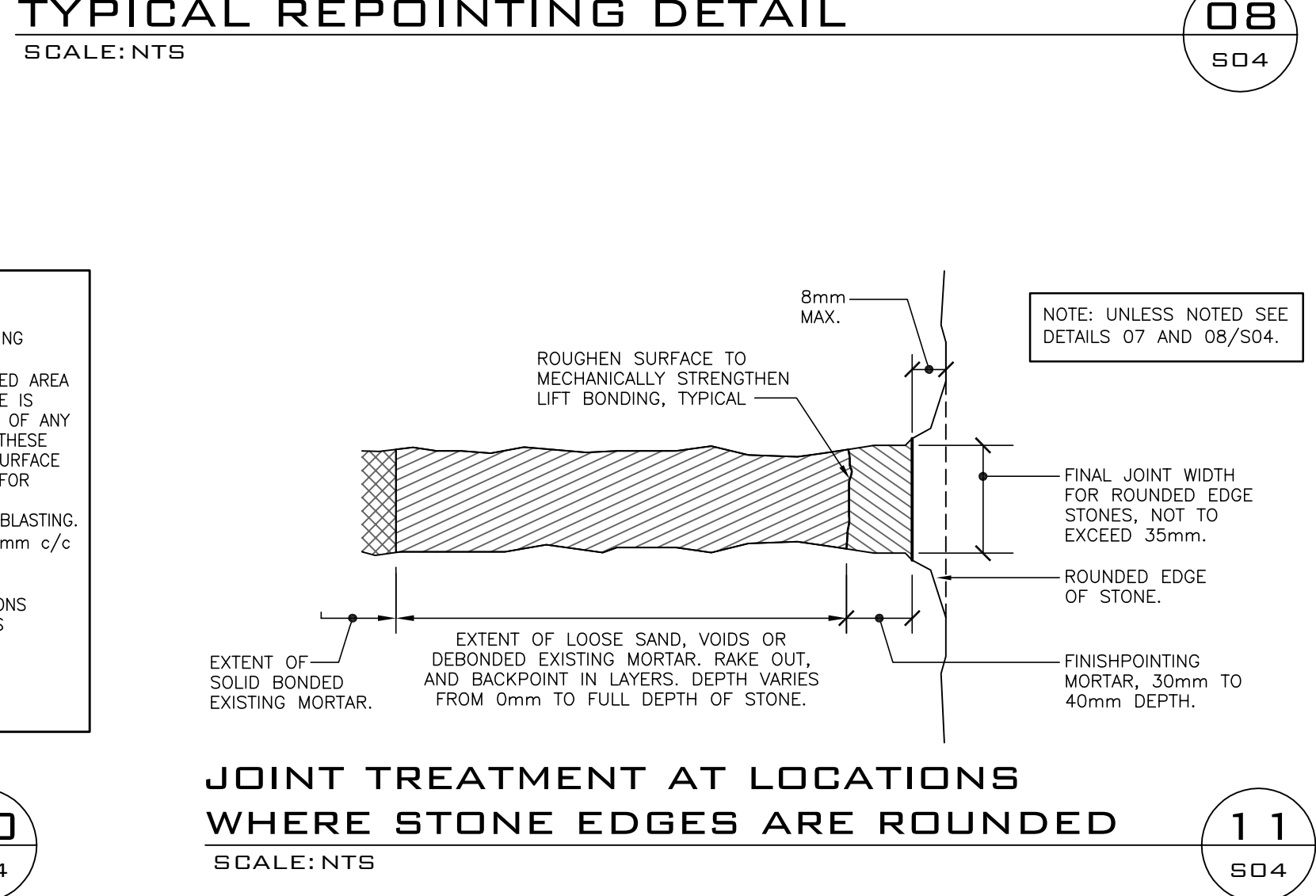
STONE REMOVAL AND RESETTING DETAIL
 SCALE: NTS

09
 S04



REPAIR AT REAR OF UPSTREAM EAST APPROACH WALL
 SCALE: NTS

12
 S04



JOINT TREATMENT AT LOCATIONS WHERE STONE EDGES ARE ROUNDED
 SCALE: NTS

11
 S04

17026-S04	DRAWING 5 OF 7
DRAWING NO.	DRAWING NAME

REFERENCE DRAWINGS				
NO.	DATE	DESCRIPTION	Drawn by	Approved
4	2017/08/21	ISSUED FOR BID	C.P.	L.M.
3	2017/07/12	100% SUBMISSION	C.P.	L.M.
2	2017/04/03	66% SUBMISSION	C.P.	L.M.
1	2017/02/14	33% SUBMISSION	C.P.	L.M.

REVISIONS				
A	B	Detail number	Numero de detail	Sheet number

Linear dimensions in millimetres / Dimensions lineaires en millimetres



PARKS CANADA
 EASTERN ONTARIO FIELD UNIT

Type of Record / Type d'enregistrement

Project title / Titre du projet

POONAMALIE LOCK 32 HERITAGE STONE MASONRY REPAIRS

Drawing title / Titre du dessin

SECTIONS AND DETAILS

Plot Scale / Echelle
 1:1 (Arch D 24x36 Plot Size)

Drawn by / Dessine par
 C.P. 2017/02/10

Field Recording by / Releve-Terminé par
 P.C. & J.C. 2016/11/21

Approved by / Approuvé par
 L.M. 2017/07/27

Checked by / Verifié par
 J.C. 2017/07/27

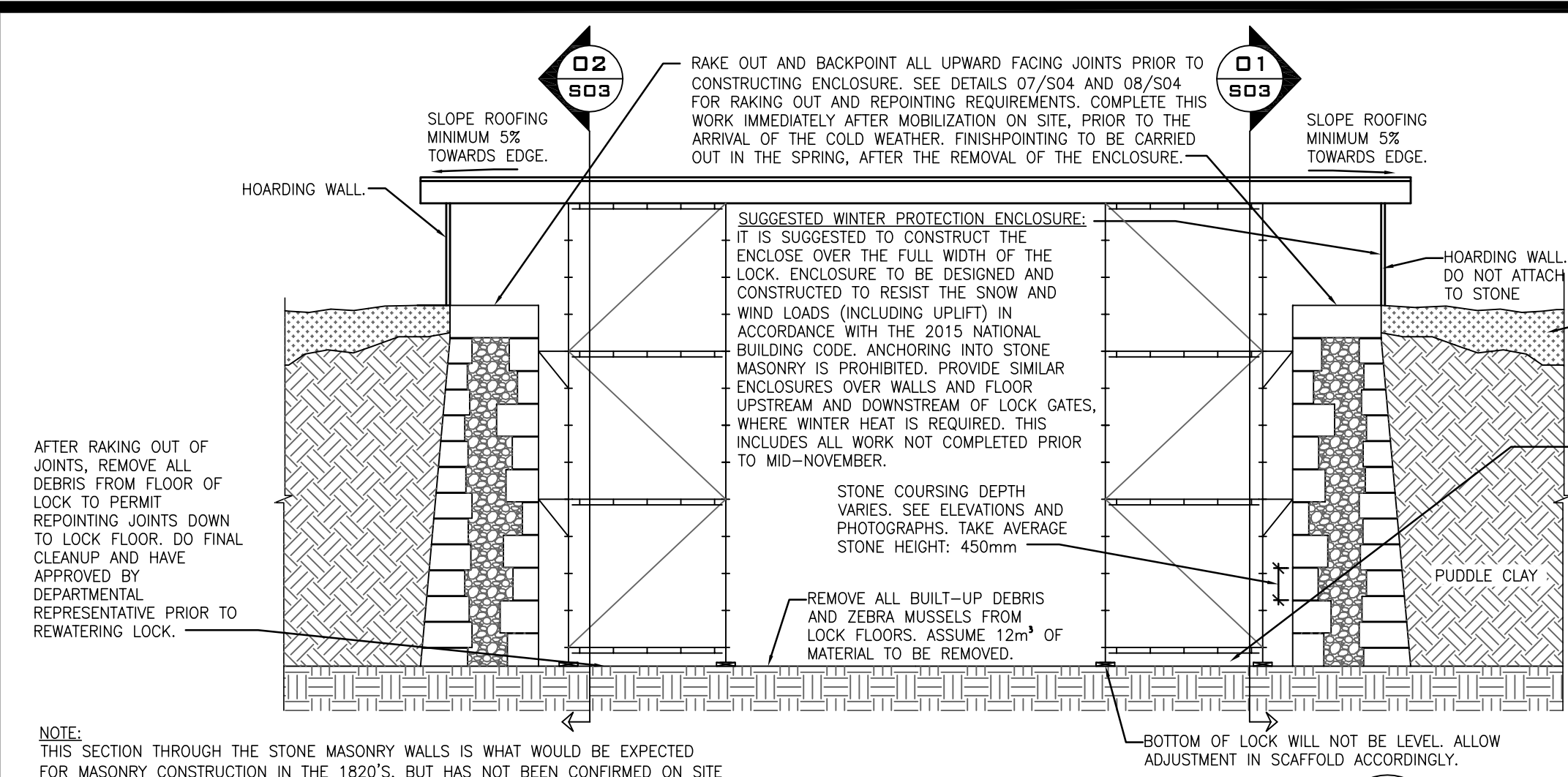
Project No./ No. du projet
 17026

Asset No.
 17026-S04-R03

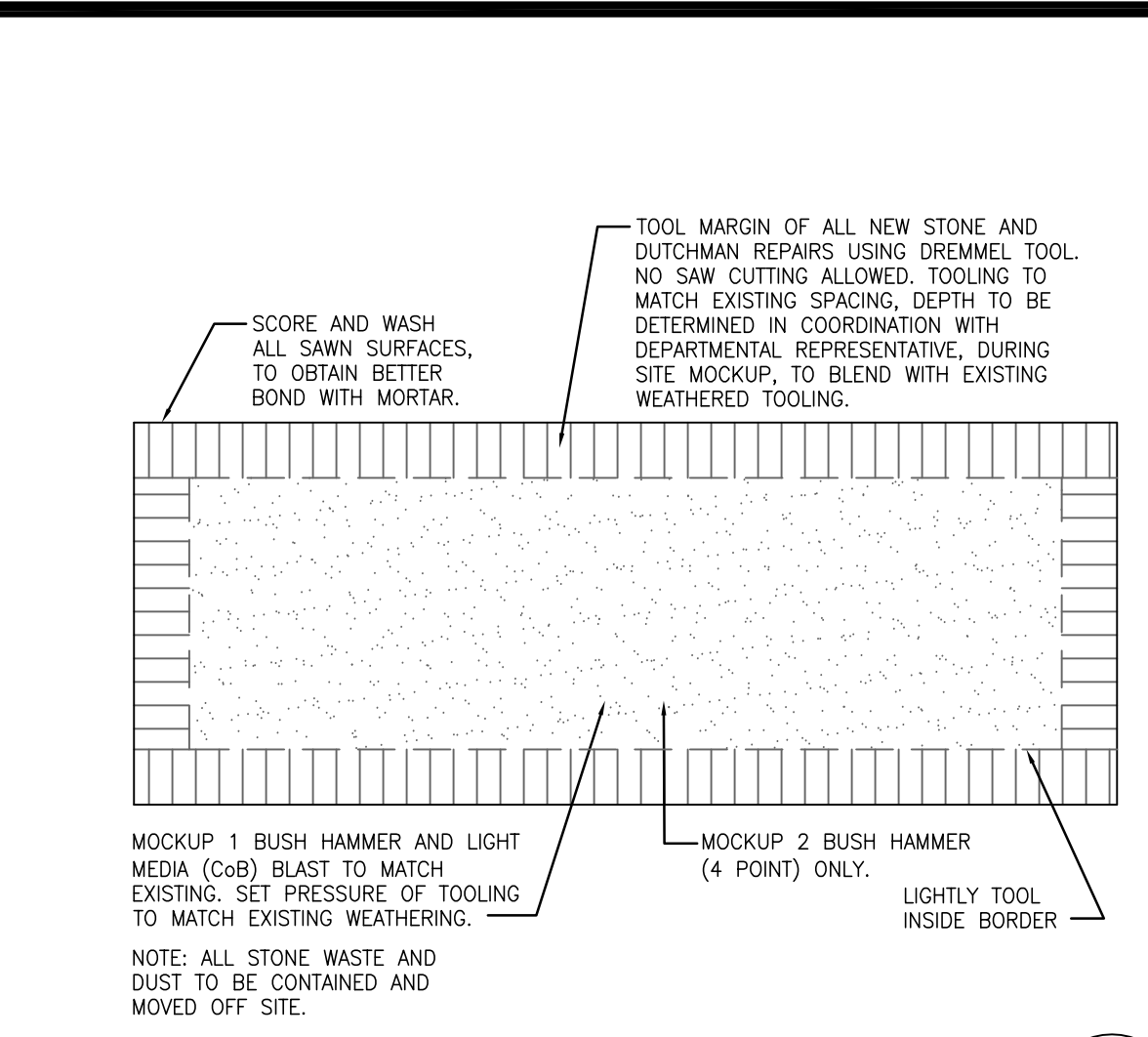
Sheet No./ Feuille No.
S04

JOHN G. COOKE & ASSOCIATES LTD. CONSULTING ENGINEERS
 17 FITZGERALD ROAD SUITE 200 (613) 226-8718
 OTTAWA, ONT. K2H 9G1 FAX (613) 226-7424
 mailbox@jgcooke.com www.jgcooke.com

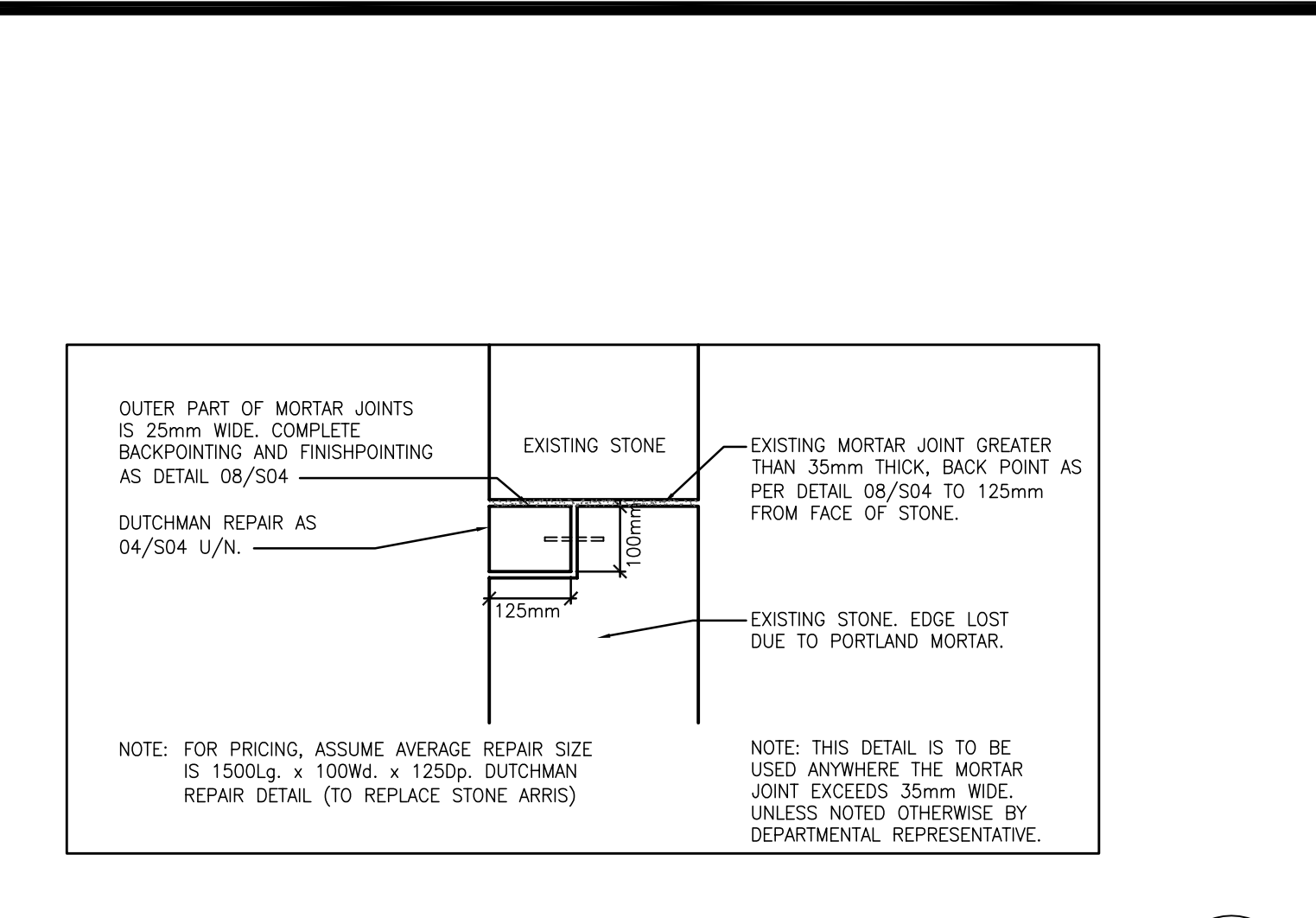
17026



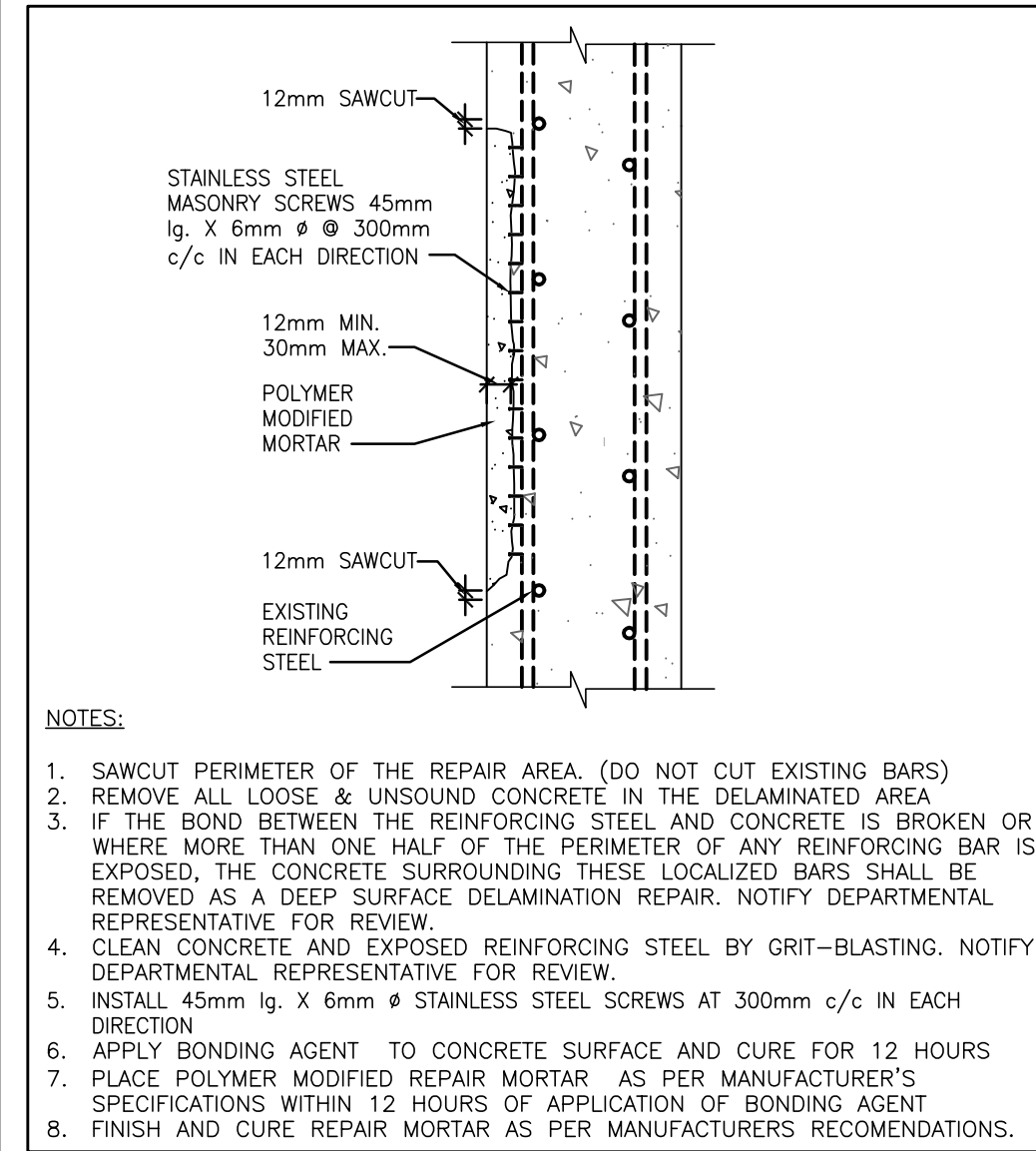
SUGGESTED ENCLOSURE - AT LOCK WALLS
SCALE: 1:75



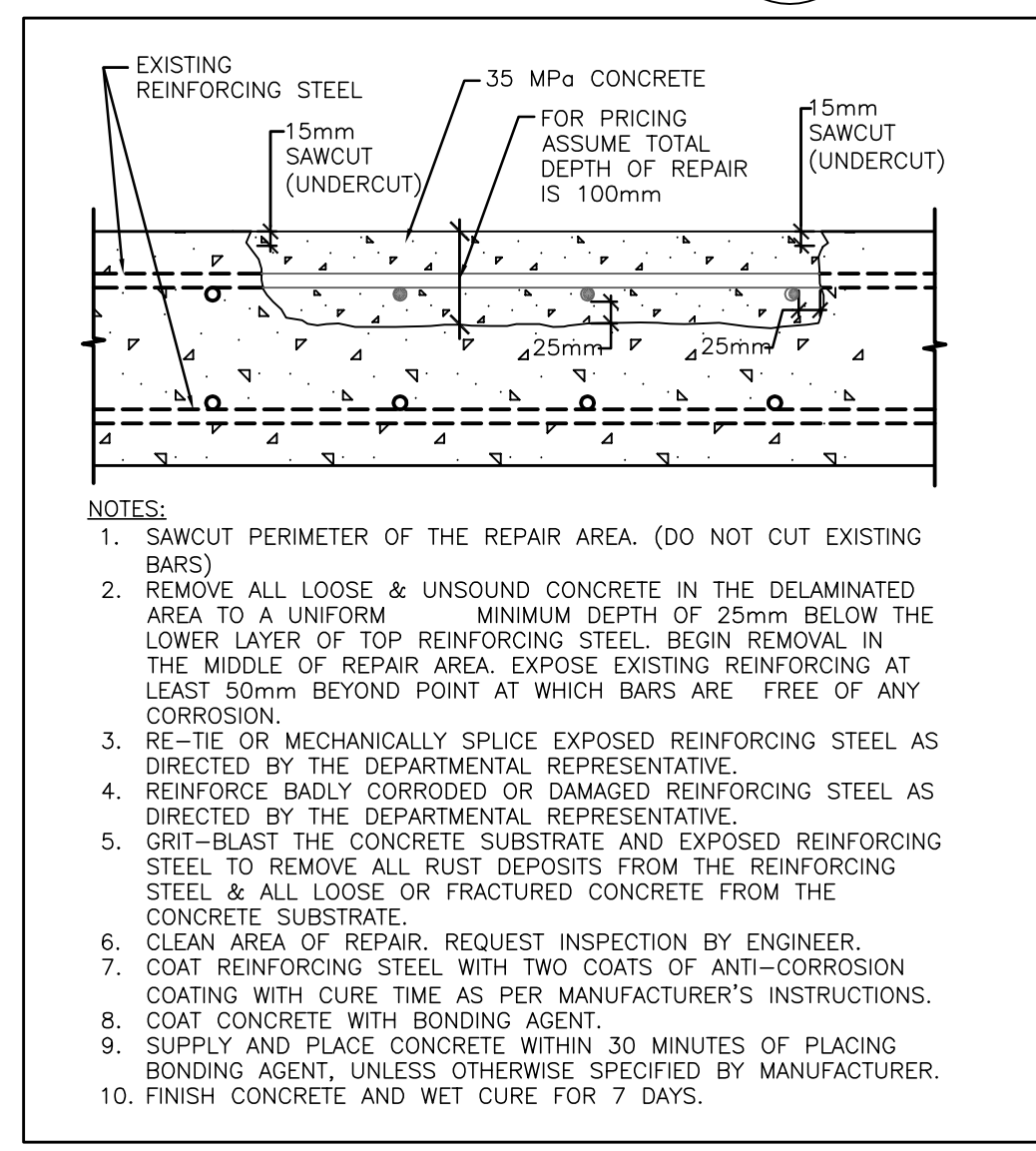
STONE EDGE FINISH
SCALE: NTS



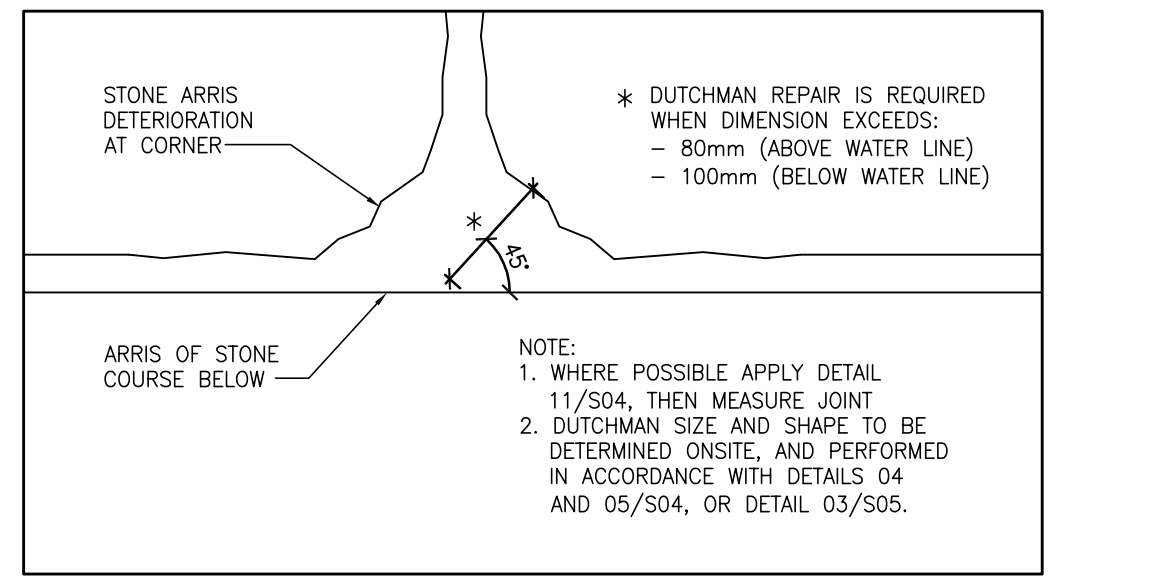
DUTCHMAN REPAIR DETAIL (EDGE)
SCALE: NTS



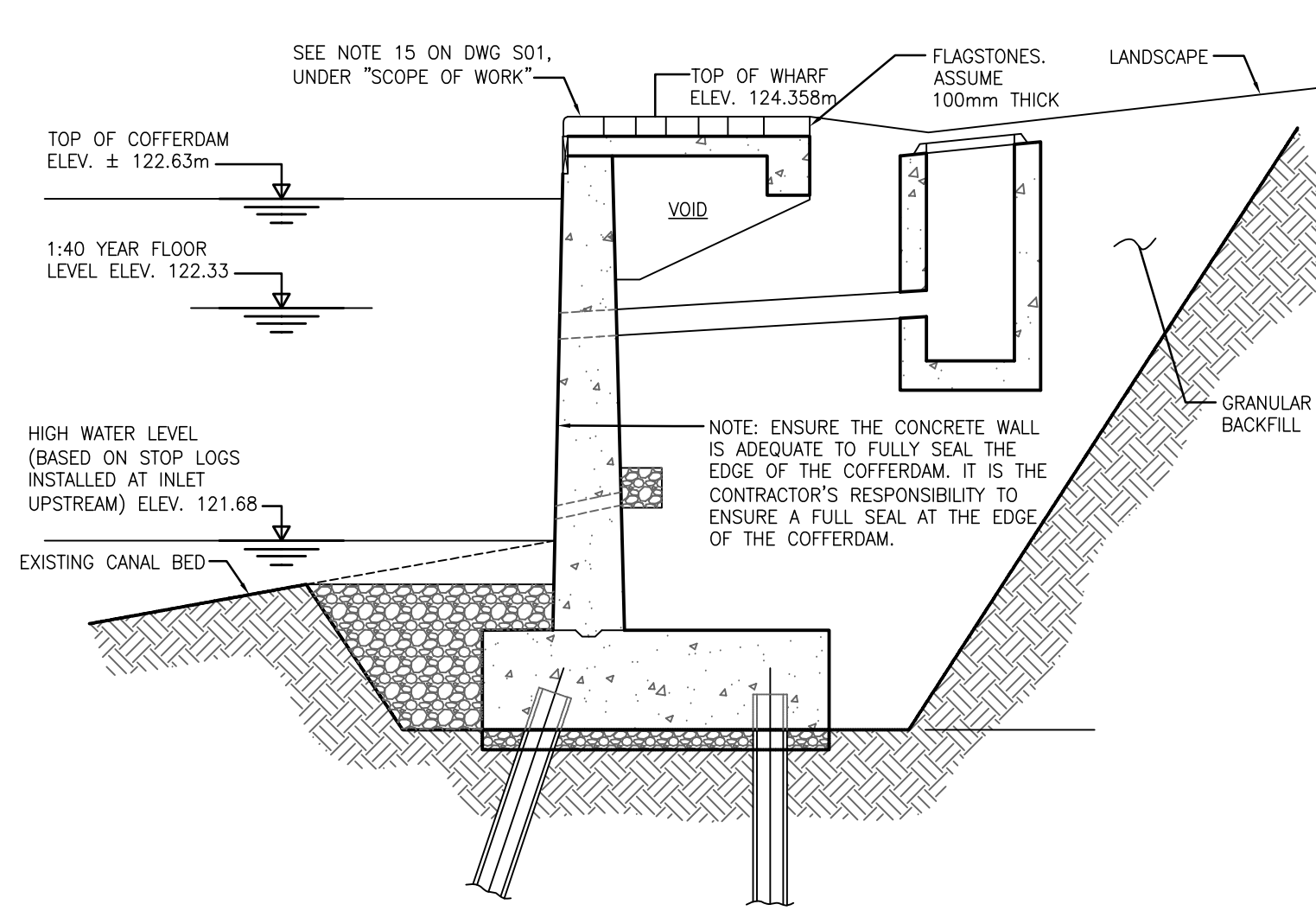
CONCRETE REPAIR ON WALL SURFACE
SCALE: NTS



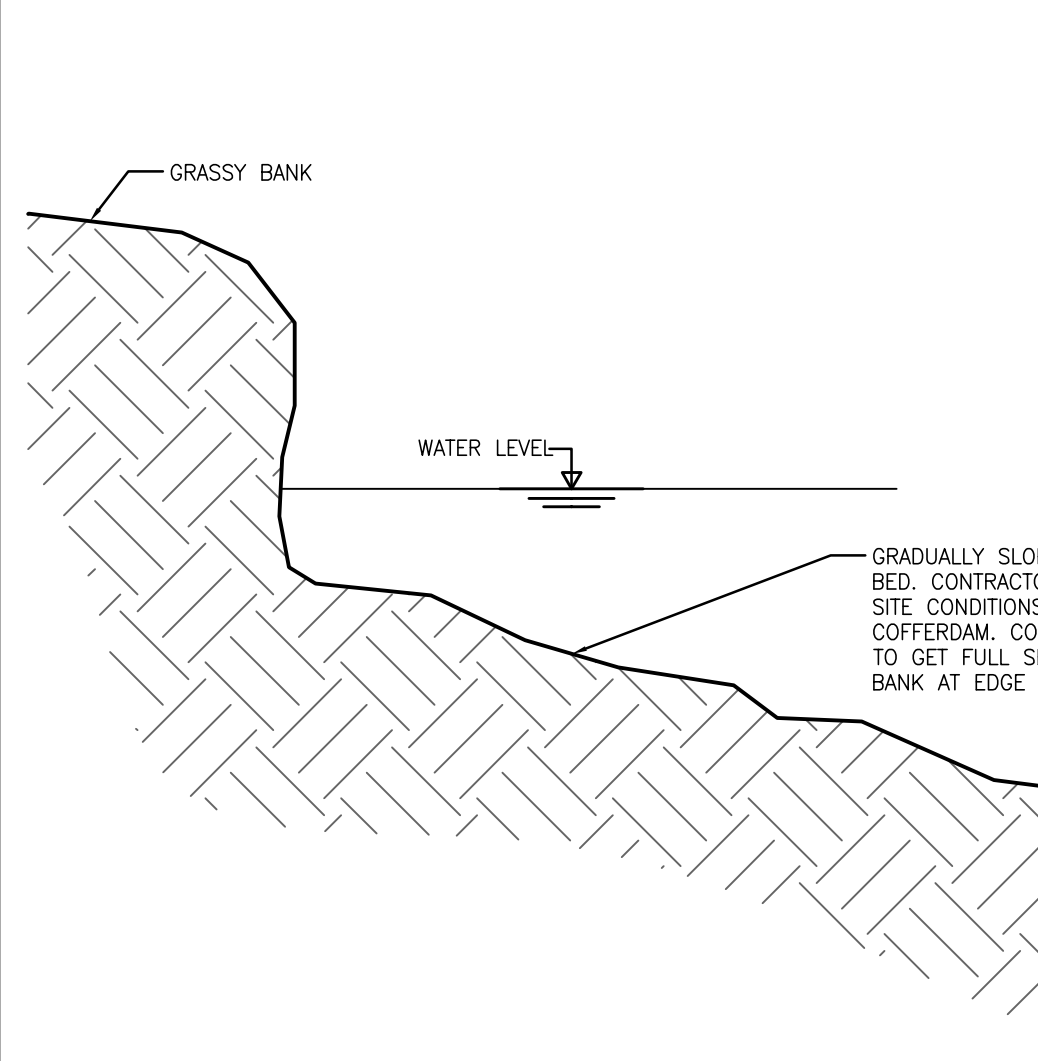
DEEP SURFACE DELAMINATION REPAIRS (SKYWARD & SURFACE)
SCALE: NTS



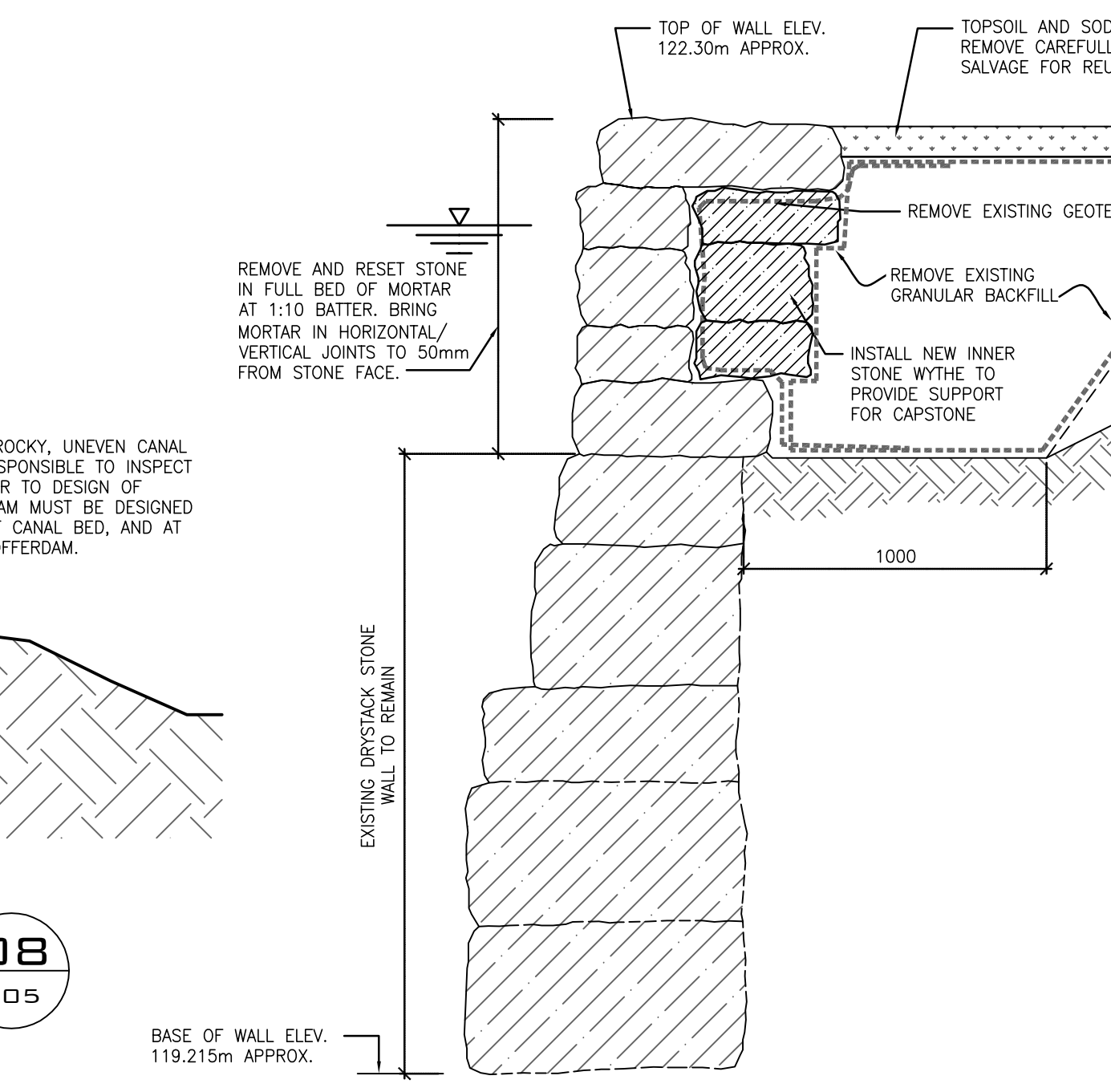
STONE CORNER DUTCHMAN REPAIR QUALIFICATION - ELEVATION
SCALE: NTS



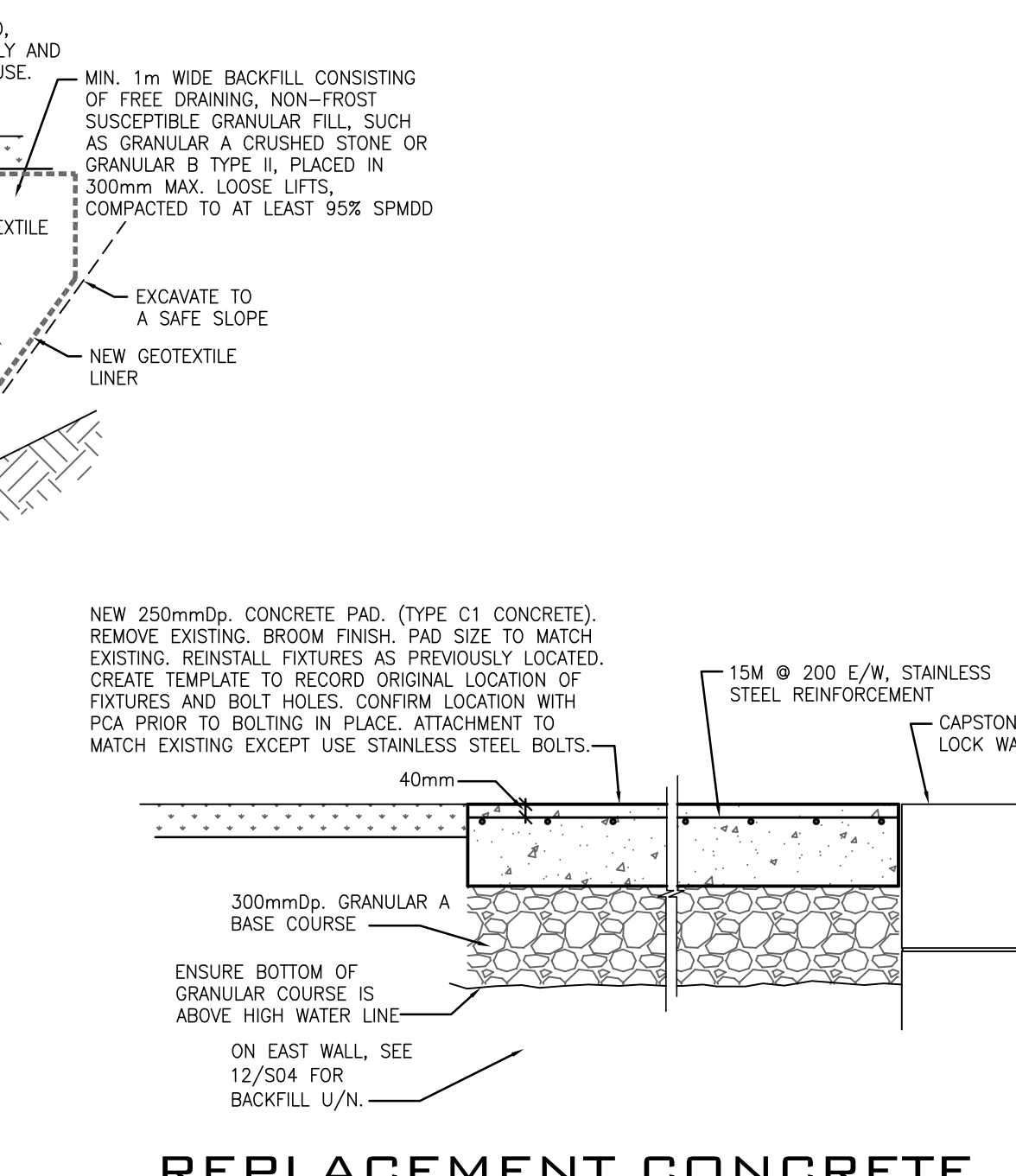
EXISTING REINFORCED CONCRETE RETAINING WALL AT WHARF
SCALE: 1:50



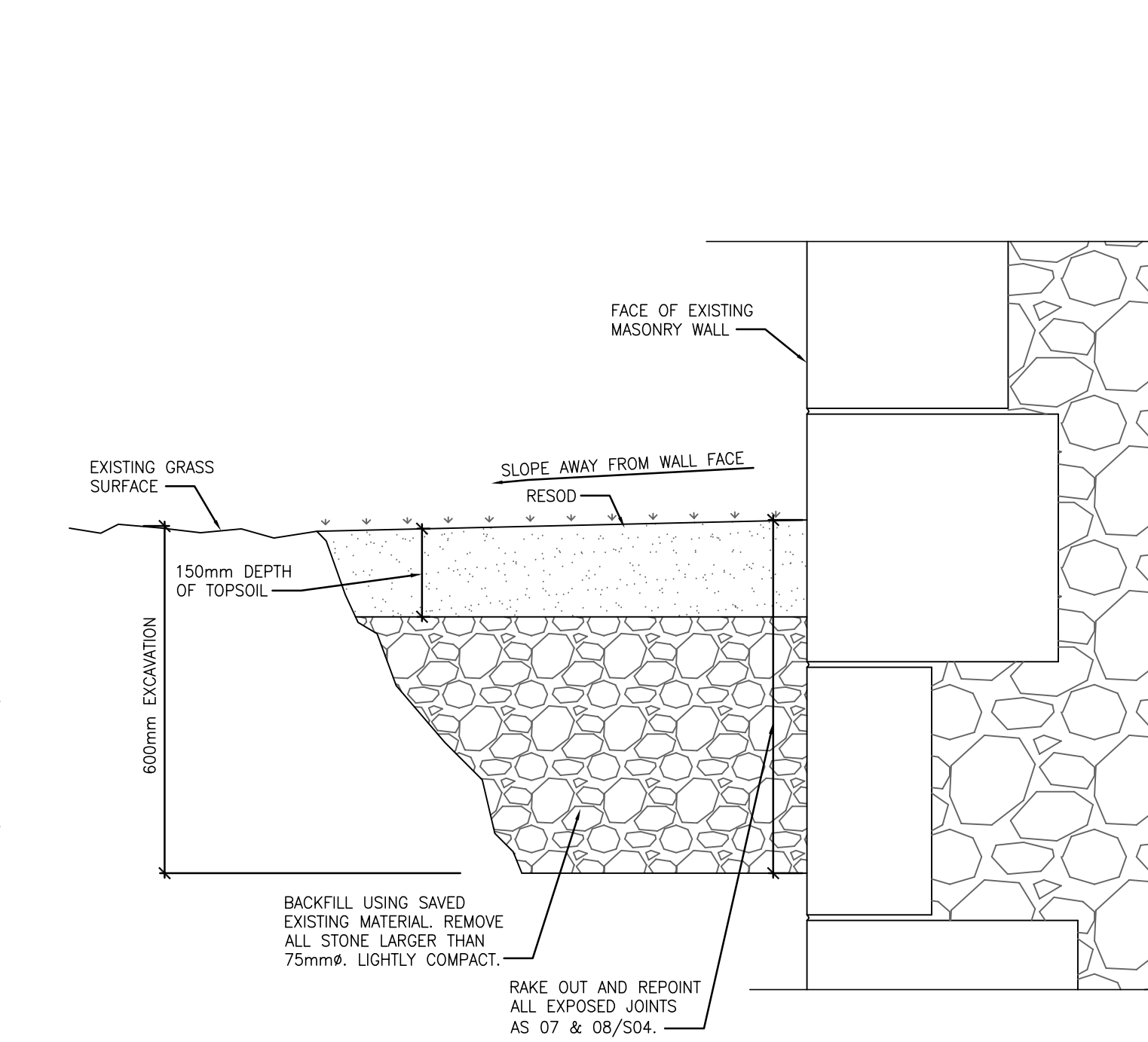
NATURAL CANAL BANK AT COFFERDAM
SCALE: 1:50



DOWNSTREAM STONE WALL REPAIR
SCALE: 1:20



REPLACEMENT CONCRETE SLAB ADJACENT TO EAST/WEST SHAFTS
SCALE: 1:20



EXCAVATION DETAIL ADJACENT TO MASONRY WALLS
SCALE: 1:20

17026-S05	DRAWING 6 OF 7
-----------	----------------

REFERENCE DRAWINGS				
NO.	DATE	DESCRIPTION	Drawn by	Approved
4	2017/08/21	ISSUED FOR BID	C.P.	L.M.
3	2017/07/12	100% SUBMISSION	C.P.	L.M.
2	2017/04/03	66% SUBMISSION	C.P.	L.M.
1	2017/02/14	33% SUBMISSION	C.P.	L.M.

REVISIONS				
A	B	A	B	
A	Detail number	A	Numero de detail	
B	Sheet number	B	Sur feuille numero	

Linear dimensions in millimeters / Dimensions lineaires en millimetres

PROFESSIONAL ENGINEER
 J.G. COOKE
 JUL 21, 17
 PROVINCE OF ONTARIO

PARCS CANADA
 EASTERN ONTARIO FIELD UNIT

Type of Record / Type d'enregistrement

Project title / Titre du projet

**POONAMALIE LOCK 32
 HERITAGE STONE MASONRY REPAIRS**

Drawing title / Titre du dessin

SECTIONS AND DETAILS

Plot Scale / Echelle
 1:1 (Arch D 24x36 Plot Size)

Drawn by / Dessine par
 C.P. Date 2017/02/10

Field Recording by / Releve-Terminé par
 P.C. & J.C. Date 2016/11/21

Approved by / Approuve par
 L.M. Date 2017/07/27

Checked by / Verifie par
 J.C. Date 2017/07/27

Project No./ No. du projet
 17026 Asset No.

Drawing Re No./No. du Dessin
 17026-S05-R03 Sheet No./ Feuille No.
S05



PHOTO 1
SCALE: NTS LOCK, LOOKING DOWNSTREAM
01
S06



PHOTO 2
SCALE: NTS LOCK, LOOKING UPSTREAM
02
S06



PHOTO 3
SCALE: NTS PCA LOCKSTATION OFFICE/POSSIBLE STAGING AREA
03
S06



PHOTO 4
SCALE: NTS PRIVATE RESIDENCE
04
S06



PHOTO 5
SCALE: NTS DOWNSTREAM WING WALLS
05
S06



PHOTO 6
SCALE: NTS DOWNSTREAM WEST APPROACH WALL
06
S06



PHOTO 7
SCALE: NTS UPSTREAM EAST APPROACH WALL AND WING WALL
07
S06

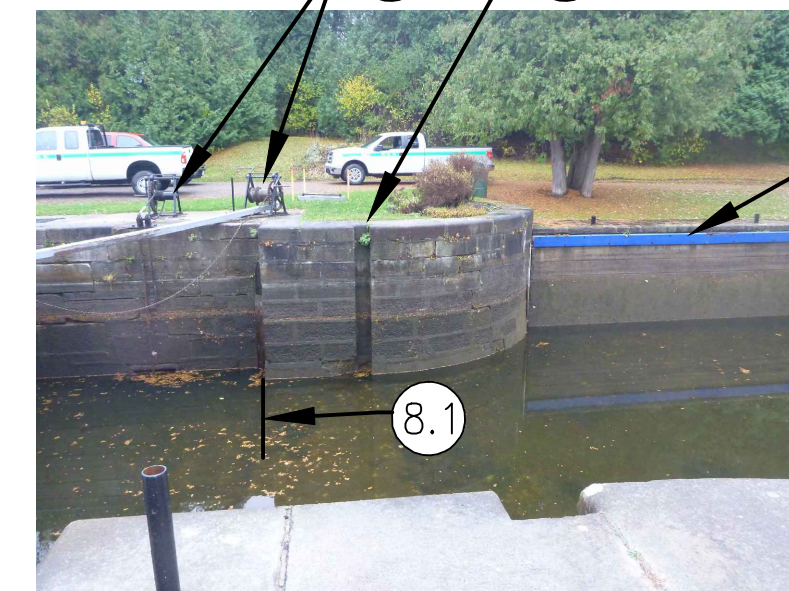


PHOTO 8
SCALE: NTS UPSTREAM EAST WING WALL
08
S06



PHOTO 9
SCALE: NTS UPSTREAM WEST APPROACH WALL
09
S06



PHOTO 10
SCALE: NTS UPSTREAM WEST WING WALL
10
S06



PHOTO 11
SCALE: NTS UPSTREAM BREAST WALL
11
S06



PHOTO 12
SCALE: NTS LOCK FLOOR (LOOKING UPSTREAM)
12
S06



PHOTO 13
SCALE: NTS WEST LOCK WALL
13
S06



PHOTO 14
SCALE: NTS EAST LOCK WALL
14
S06



PHOTO 15
SCALE: NTS CLOSE UP SHOWING PARGING OVER STONE FACE
15
S06

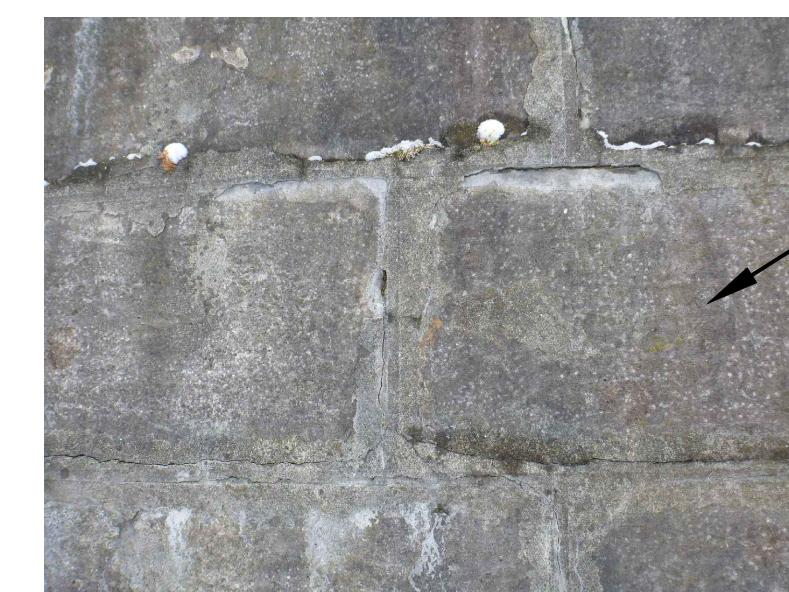


PHOTO 16
SCALE: NTS CLOSE UP SHOWING STONE FINISH
16
S06

PHOTOGRAPH NOTES:

- PHOTO 1**
1.1 FOR SCOPE OF WORK ON MASONRY WALLS, SEE ELEVATION ON DWG S03.
- PHOTO 2**
2.1 PROTECT ALL PERMANENT SITE FIXTURES SUCH AS SIGNS ETC.
- PHOTO 3**
3.1 POSSIBLE STAGING AREA. PROVIDE TEMPORARY ROAD OVER STAGING AREA AS SPECIFIED. REPAIR ALL LANDSCAPING ON COMPLETION OF WORK.
- 3.2 PCA OFFICE. PUBLIC WASHROOMS. THIS SPACE WILL BE LOCKED FOR THE DURATION OF THE PROJECT.
- 3.3 FURNITURE TO BE MOVED AND STORED. RELOCATE ON COMPLETION OF WORK.
- 3.4 PROTECT TREES AND SHRUBS AS SPECIFIED.
- PHOTO 4**
4.1 PRIVATE RESIDENCE
- PHOTO 5**
5.1 EXISTING MASONRY WALL TO BE REPAIRED, SEE 9/S05.

- 5.2 EXISTING WOOD CRIBBING TO BE PROTECTED.
- 5.3 RAFTED STOP LOGS ARE AVAILABLE ON SITE.
- PHOTO 6**
6.1 EXCAVATE / BACKFILL BEHIND WALL. SEE 9/S05.
- PHOTO 7**
7.1 SEE NOTE 15. IN "SCOPE OF WORK" ON DWG S01.
- 7.2 REMOVE SHRUBS, EXCAVATE BEHIND WALL AND BACKFILL, SEE 12/S04.
- 7.3 REMOVE SHRUBS AND FLOWERBED. REINSTATE WITH SOD, ONCE WORK IS COMPLETE.
- PHOTO 8**
8.1 EXTENT OF UPSTREAM MASONRY WORK PRIOR TO INSTALLING LOG GAINS.
- PHOTO 9**
9.1 MASONRY CONSERVATION ON UPSTREAM WALL. SEE NOTE 14 IN "SCOPE OF WORK" ON DWG S01.

- PHOTO 10**
10.1 EXISTING SLUICE GATE ON BOTH SIDE OF LOCK TO BE REMOVED AND HANDED OVER TO PCA FOR REPAIR. REINSTALL ONCE MASONRY CONSERVATION IS COMPLETE.
- PHOTO 11**
11.1 BREAST WALL, SEE ELEVATION ON DWG S03.
- 11.2 LOWER ENTRANCE TO SLUICE TUNNELS. COMPLETE MASONRY CONSERVATION REQUIRED, AS FOR LOCK WALLS.
- PHOTO 12**
12.1 REMOVE ALL ZEBRA MUSSELS AND OTHER DEBRIS FROM LOCK FLOOR.
- 12.2 EXISTING STEEL LADDERS TO BE REPLACED, SEE DWG S03.
- PHOTO 13**
13.1 SEE ELEVATION ON DWG S03 FOR EXTENT OF PARGING TO BE REMOVED AND REPLACED WITH NEW DUTCHMAN REPAIRS.
- PHOTO 16**
16.1 REFER TO 2/S05 FOR STONE FINISH.
- PHOTO 17**
17.1 EXISTING STEEL REINFORCEMENT TO BE REMOVED
- 17.2 SEE DWGS S02 AND S03 FOR EXTENT OF MASONRY CONSERVATION IN VENTILATION SHAFTS.

- PHOTO 18**
18.1 REMOVE CONCRETE PARGING AND DO DUTCHMAN REPAIRS, AS PER LOCK WALLS.
- PHOTO 20**
20.1 COMPLETE MASONRY CONSERVATION REQUIRED, AS FOR LOCK WALLS.
- PHOTO 21**
21.1 MASONRY CONSERVATION ON TOP OF LOCK WALLS, SEE DWG S02.
- 21.2 REMOVE AND REPLACE CONCRETE PAD AS 10/S05. INCLUDE CAREFUL REMOVAL AND REINSTALLATION OF EXISTING FIXTURES. CREATE TEMPLATE TO RECORD ORIGINAL LOCATION OF FIXTURES AND BOLT HOLES.
- PHOTO 22**
22.1 DOWNSTREAM EAST APPROACH WALL, SEE ELEVATION, DWG S03.
- PHOTO 24**
24.1 LOCATION OF UPSTREAM COFFERDAM, JUST UPSTREAM OF WEST MASONRY JETTY.
- PHOTO 25**
25.1 LOCATION OF DOWNSTREAM COFFERDAM, JUST DOWNSTREAM OF WOOD CRIB JETTY.

- PHOTO 27**
27.1 PROPOSED LOCATION OF MAIN SITE TRAILER AND LAYDOWN AREA.
- PHOTO 28**
28.1 ACCESS ROAD TO INSTALL UPSTREAM COFFERDAM, AND EXCAVATION/BACKFILL FOR NOTE 7.2.
- PHOTO 29**
29.1 SEE DWG S02 FOR EXTENT OF MASONRY WORK, ON LOCK FLOOR BELOW UPSTREAM GATES.
- PHOTO 31**
31.1 TEMPORARY ROADWAY TO STAGING AREA, ADJACENT TO LOCKS FROM MAIN SITE OFFICE, SEE SPECIFICATIONS. REPAIR LANDSCAPING AFTER ROADWAY REMOVED.
- 31.2 EXISTING PAVED PATHWAY TO BE PROTECTED. NO VEHICLES TO DRIVE ON THIS PATHWAY.
- 31.3 WOOD CURBING TO BE REMOVED AND REINSTALLED.
- 31.4 NO CONSTRUCTION MATERIAL TO BE LAID DOWN IN INNER CAR PARK.
- PHOTO 32**
32.1 EXAMPLE OF DRAWN DOWN WATER LEVEL WITH INLET STOP LOGS INSTALLED.

Parcs Canada Parks Canada

Canada

JOHN G. COOKE & ASSOCIATES LTD. CONSULTING ENGINEERS
17 FITZGERALD ROAD SUITE 200 (613) 226-8718 E-MAIL: mailbox@jgcooke.com WEB SITE: www.jgcooke.com

OTTAWA, ONT. K2H 9G1
FAX (613) 226-7424

17026-S06 DRAWING 7 OF 8

DRAWING NO. DRAWING NAME

REFERENCE DRAWINGS

NO.	DATE	DESCRIPTION	Drawn by	Approved
3	2017/08/21	ISSUED FOR BID	C.P.	L.M.
2	2017/07/12	100% SUBMISSION	C.P.	L.M.
1	2017/04/03	66% SUBMISSION	C.P.	L.M.

REVISIONS

A	B	A Detail number	B Sheet number	A Numero de detail	B Sur feuille numero

Linear dimensions in millimeters / Dimensions lineaires en millimetres

PARKS CANADA
EASTERN ONTARIO FIELD UNIT

Type of Record / Type d'enregistrement

Project title / Titre du projet
**POONAMALIE LOCK 32
HERITAGE STONE MASONRY REPAIRS**

Drawing title / Titre du dessin
PHOTOGRAPHIC DETAILS

Plot Scale / Echelle
1:1 (Arch D 24x36 Plot Size)

Drawn by/ Dessine par C.P.	Date 2017/04/03
Field Recording by / Releve-Terminé par P.C. & J.C.	Date 2016/11/21
Approved by / Approuve par L.M.	Date 2017/07/27
Checked by/ Verifie par J.C.	Date 2017/07/27

Project No./ No. du projet 17026	Asset No.	Sheet No./ Feuille No. S06
Drawing Re No./No. du Dessin 17026-S06-R03		

JOHN G. COOKE & ASSOCIATES LTD.
 CONSULTING ENGINEERS
 17 FITZGERALD ROAD SUITE 200
 (613) 226-8718 E-MAIL: mailbox@jgcooke.com
 OTTAWA, ONT. K2H 9G1
 FAX (613) 226-7424
 www.jgcooke.com

17026

17026-S07 DRAWING 8 OF 8

DRAWING NO. DRAWING NAME

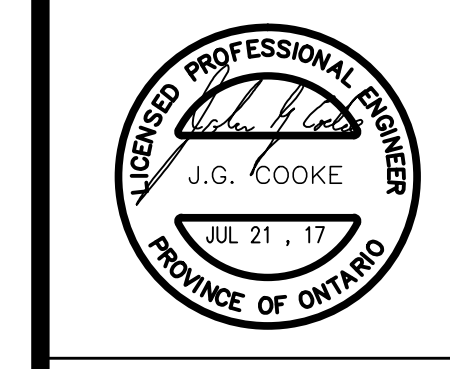
REFERENCE DRAWINGS

NO.	DATE	DESCRIPTION	Drawn by	Approved
2	2017/08/21	ISSUED FOR BID	C.P.	L.M.
1	2017/07/17	100% SUBMISSION	C.P.	L.M.

REVISIONS

A	A Detail number	A Numero de detail
B	B Sheet number	B Sur feuille numero

Linear dimensions in millimeters Dimensions lineaires en millimetres



PARCS CANADA EASTERN ONTARIO FIELD UNIT

Type of Record / Type d'enregistrement

Project title / Titre du projet
POONAMALIE LOCK 32 HERITAGE STONE MASONRY REPAIRS

Drawing title / Titre du dessin

PHOTOGRAPHIC DETAILS

Plot Scale / Echelle 1:1 (Arch D 24x36 Plot Size)	
Drawn by/ Dessine par C.P.	Date 2017/04/03
Field Recording by / Relevé-Terminé par P.C. & J.C.	Date 2016/11/21
Approved by / Approuvé par L.M.	Date 2017/07/27
Checked by/ Verifié par J.C.	Date 2017/07/27
Project No./ No. du projet 17026	Asset No. Sheet No./ Feuille No. S07
Drawing Re No./No. du Dessin 17026-S06-R02	

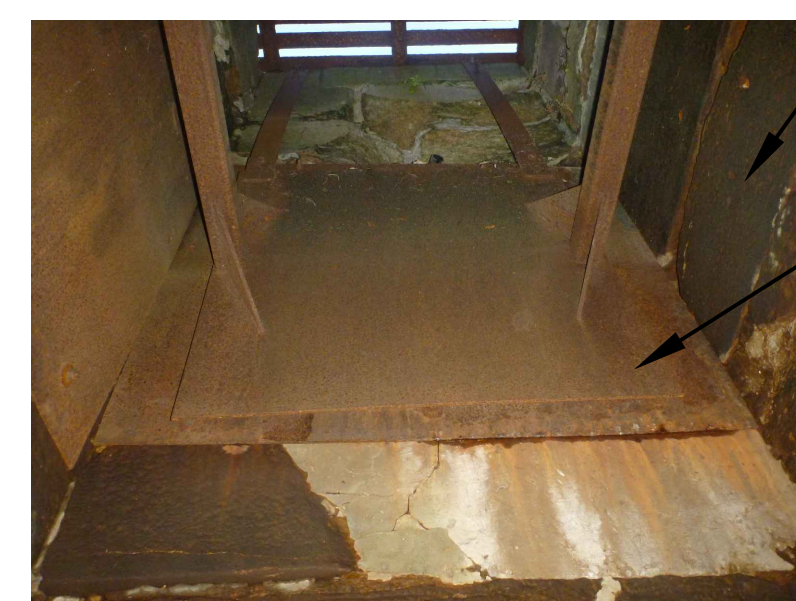


PHOTO 17
SCALE:NTS EAST SLUICE VENT BRACING

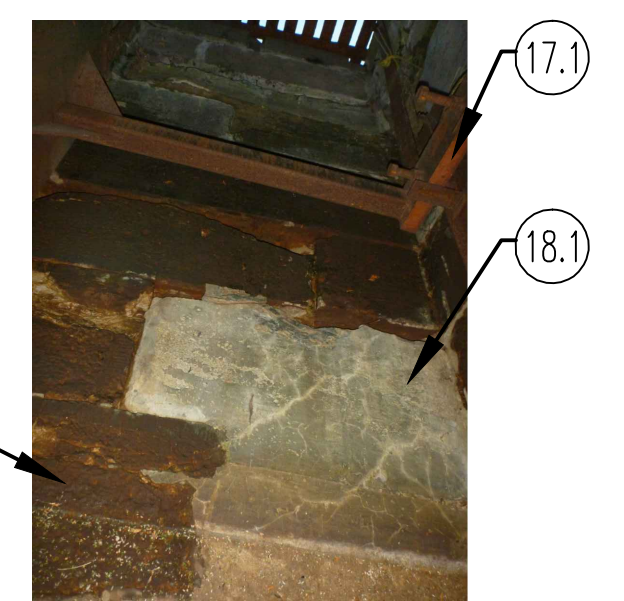


PHOTO 18
SCALE:NTS EAST SLUICE VENT



PHOTO 19
SCALE:NTS WEST SLUICE VENT AND TUNNEL

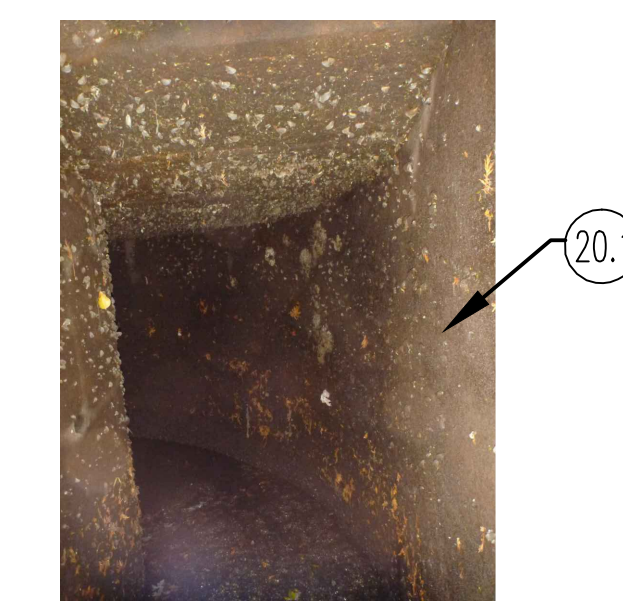


PHOTO 20
SCALE:NTS EAST SLUICE TUNNEL



PHOTO 21
SCALE:NTS SKYWARD FACING MASONRY AND CONCRETE



PHOTO 22
SCALE:NTS NORTH EAST WING WALL

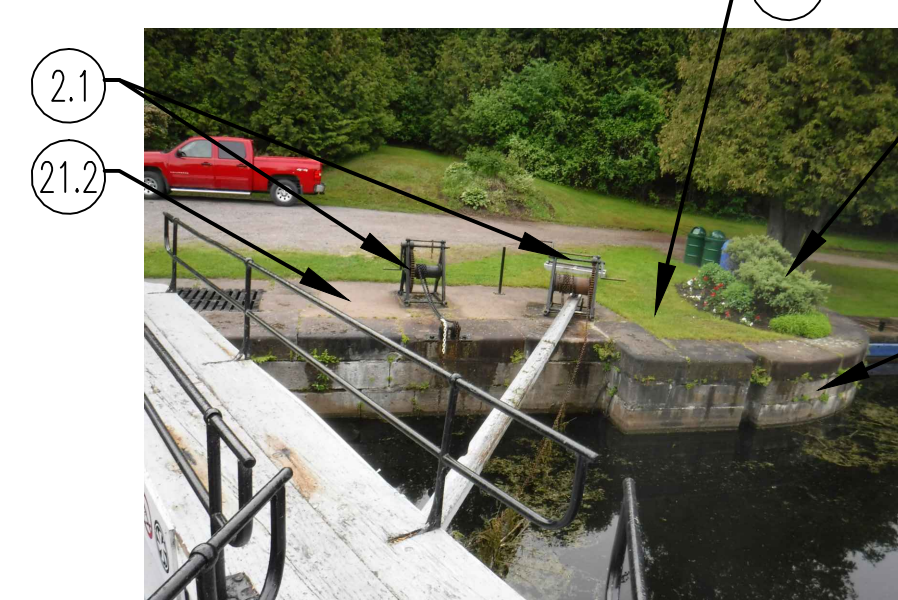


PHOTO 23
SCALE:NTS SOUTH EAST WING WALL

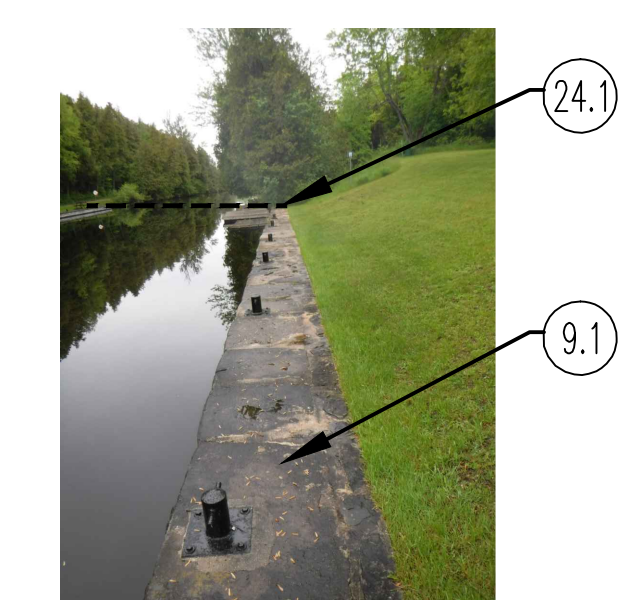


PHOTO 24
SCALE:NTS UPSTREAM WEST APPROACH WALL



PHOTO 25
SCALE:NTS DOWNSTREAM WEST APPROACH WALL

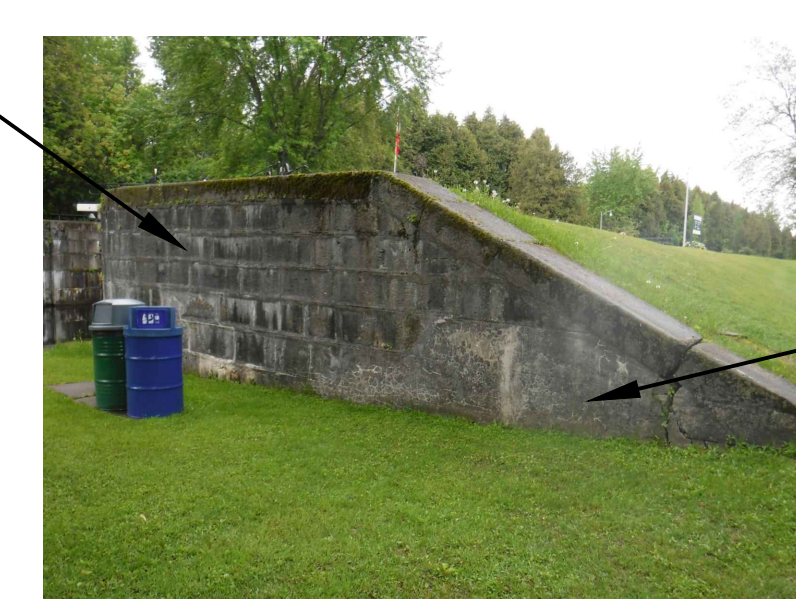


PHOTO 26
SCALE:NTS NORTHWEST WING WALL



PHOTO 27
SCALE:NTS PARKING AREA



PHOTO 28
SCALE:NTS LOCK SITE LOOKING NORTH



PHOTO 29
SCALE:NTS CONCRETE PAD TO BE REPAIRED

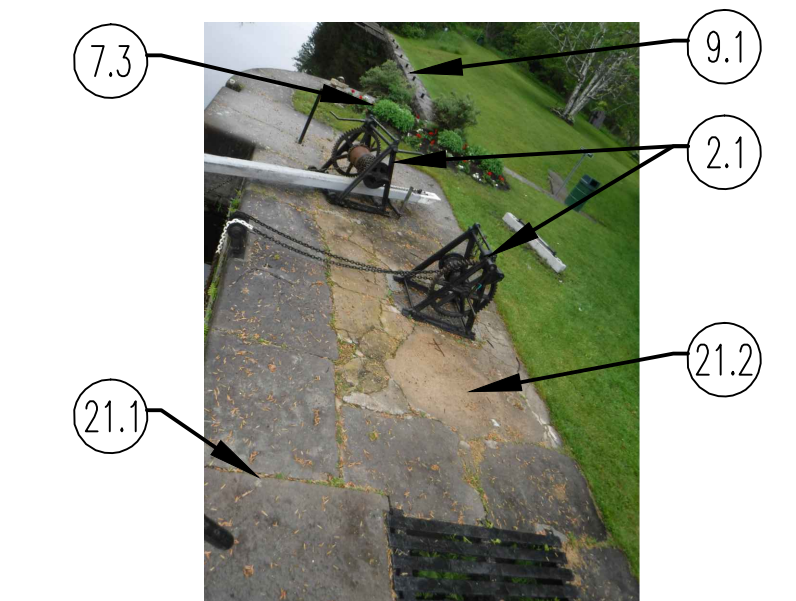


PHOTO 30
SCALE:NTS PARKING AREA ACCESS



PHOTO 31
SCALE:NTS UPSTREAM WEST APPROACH WALL



PHOTO 32
SCALE:NTS DOWNSTREAM WEST APPROACH WALL

PHOTOGRAPH NOTES:

- PHOTO 1**
1.1 FOR SCOPE OF WORK ON MASONRY WALLS, SEE ELEVATION ON DWG S03.
- PHOTO 2**
2.1 PROTECT ALL PERMANENT SITE FIXTURES SUCH AS SIGNS ETC.
- PHOTO 3**
3.1 POSSIBLE STAGING AREA. PROVIDE TEMPORARY ROAD OVER STAGING AREA AS SPECIFIED. REPAIR ALL LANDSCAPING ON COMPLETION OF WORK.
- 3.2 PCA OFFICE, PUBLIC WASHROOMS. THIS SPACE WILL BE LOCKED FOR THE DURATION OF THE PROJECT.
- 3.3 FURNITURE TO BE MOVED AND STORED. RELOCATE ON COMPLETION OF WORK.
- 3.4 PROTECT TREES AND SHRUBS AS SPECIFIED.
- PHOTO 4**
4.1 PRIVATE RESIDENCE
- PHOTO 5**
5.1 EXISTING MASONRY WALL TO BE REPAIRED, SEE 9/S05.

- 5.2 EXISTING WOOD CRIBBING TO BE PROTECTED.
- 5.3 RAFTED STOP LOGS ARE AVAILABLE ON SITE.
- PHOTO 6**
6.1 EXCAVATE / BACKFILL BEHIND WALL. SEE 9/S05.
- PHOTO 7**
7.1 SEE NOTE 15. IN "SCOPE OF WORK" ON DWG S01.
- 7.2 REMOVE SHRUBS, EXCAVATE BEHIND WALL AND BACKFILL, SEE 12/S04.
- 7.3 REMOVE SHRUBS AND FLOWERBED. REINSTATE WITH SOD, ONCE WORK IS COMPLETE.
- PHOTO 8**
8.1 EXTENT OF UPSTREAM MASONRY WORK PRIOR TO INSTALLING LOG GAINS.
- PHOTO 9**
9.1 MASONRY CONSERVATION ON UPSTREAM WALL. SEE NOTE 14 IN "SCOPE OF WORK" ON DWG S01.

- PHOTO 10**
10.1 EXISTING SLUICE GATE ON BOTH SIDE OF LOCK TO BE REMOVED AND HANDED OVER TO PCA FOR REPAIR. REINSTALL ONCE MASONRY CONSERVATION IS COMPLETE.
- PHOTO 11**
11.1 BREAST WALL, SEE ELEVATION ON DWG S03.
- 11.2 LOWER ENTRANCE TO SLUICE TUNNELS. COMPLETE MASONRY CONSERVATION REQUIRED, AS FOR LOCK WALLS.
- PHOTO 12**
12.1 REMOVE ALL ZEBRA MUSSELS AND OTHER DEBRIS FROM LOCK FLOOR.
- 12.2 EXISTING STEEL LADDERS TO BE REPLACED, SEE DWG S03.
- PHOTO 13**
13.1 SEE ELEVATION ON DWG S03 FOR EXTENT OF PARGING TO BE REMOVED AND REPLACED WITH NEW DUTCHMAN REPAIRS.
- PHOTO 16**
16.1 REFER TO 2/S05 FOR STONE FINISH.
- PHOTO 17**
17.1 EXISTING STEEL REINFORCEMENT TO BE REMOVED
- 17.2 SEE DWGS S02 AND S03 FOR EXTENT OF MASONRY CONSERVATION IN VENTILATION SHAFTS.

- PHOTO 18**
18.1 REMOVE CONCRETE PARGING AND DO DUTCHMAN REPAIRS, AS PER LOCK WALLS.
- PHOTO 20**
20.1 COMPLETE MASONRY CONSERVATION REQUIRED, AS FOR LOCK WALLS.
- PHOTO 21**
21.1 MASONRY CONSERVATION ON TOP OF LOCK WALLS, SEE DWG S02.
- 21.2 REMOVE AND REPLACE CONCRETE PAD AS 10/S05. INCLUDE CAREFUL REMOVAL AND REINSTALLATION OF EXISTING FIXTURES. CREATE TEMPLATE TO RECORD ORIGINAL LOCATION OF FIXTURES AND BOLT HOLES.
- PHOTO 22**
22.1 DOWNSTREAM EAST APPROACH WALL, SEE ELEVATION, DWG S03.
- PHOTO 24**
24.1 LOCATION OF UPSTREAM COFFERDAM, JUST UPSTREAM OF WEST MASONRY JETTY.
- PHOTO 25**
25.1 LOCATION OF DOWNSTREAM COFFERDAM, JUST DOWNSTREAM OF WOOD CRIB JETTY.

- PHOTO 27**
27.1 PROPOSED LOCATION OF MAIN SITE TRAILER AND LAYDOWN AREA.
- PHOTO 28**
28.1 ACCESS ROAD TO INSTALL UPSTREAM COFFERDAM, AND EXCAVATION/BACKFILL FOR NOTE 7.2.
- PHOTO 29**
29.1 SEE DWG S02 FOR EXTENT OF MASONRY WORK, ON LOCK FLOOR BELOW UPSTREAM GATES.
- PHOTO 31**
31.1 TEMPORARY ROADWAY TO STAGING AREA, ADJACENT TO LOCKS FROM MAIN SITE OFFICE, SEE SPECIFICATIONS. REPAIR LANDSCAPING AFTER ROADWAY REMOVED.
- 31.2 EXISTING PAVED PATHWAY TO BE PROTECTED. NO VEHICLES TO DRIVE ON THIS PATHWAY.
- 31.3 WOOD CURBING TO BE REMOVED AND REINSTALLED.
- 31.4 NO CONSTRUCTION MATERIAL TO BE LAID DOWN IN INNER CAR PARK.
- PHOTO 32**
32.1 EXAMPLE OF DRAWN DOWN WATER LEVEL WITH INLET STOP LOGS INSTALLED.