



Invitation to Tender (ITT)
Main Entrance/Colonnade Glazing/Roof Replacement
Reference #: NGC110697
Buy and Sell Reference #: PW-17-00789081
September 15, 2017

ADDENDA # 3

This Addendum forms part of the contract documents and is to be read, interpreted, and coordinated with all other parts. The cost of all contained herein is to be included in the contract sum. Acknowledge receipt of this Addendum by inserting its number and date on the Tender Form, specifically article G.2.

1. What are the ceiling heights for the temporary lighting?
 - a. Refer to architectural drawings for dimensions; Appendix F (English) and Appendix G (French). Temporary lighting to be hung to underside of ceiling.
2. Please specify the location of the emergency panel. How far is it from the work area?
 - a. Emergency circuits in construction area to be re-used.
3. Appendix Q – CLEB Drawings – B1.01-B5.01 - Is there a copy of these drawings available in REVIT or an equivalent BIM program and could it be made available to all tendering parties? This would be for visualisation purposes only.
 - a. The drawings are not available in a format that can be used in any BIM program.
4. Appendix L – Mechanical Drawings - Are there any sprinklers or live water pipes in the working space internally in the Colonnade or Entrance?
 - a. No.
5. We respectfully request an Extension to the RFI deadline of 2 days.
 - a. The question deadline has been extended, please refer to Addenda #2 posted on September 13, 2017.
6. Please confirm if it is a requirement to scaffold the outside of the Colonnade and Main Entrance to gain access externally or is this at the discretion of the tendering parties. Is hoisting acceptable?
 - a. Hoisting with personnel lifts are the preferred approach.
7. Please confirm the temporary lighting requirements on all hoarding (internal & external).
 - a. Temporary lighting to provide a minimum of 10lux.



8. Please provide detailed, highlighted sketches and narratives of the extent of demolition to the roofs. Please ensure this details the full original structure of the roof build up.
 - a. As per specification Section 07 65 00, the roof demolition is to include the removal of all components from the exposed, lead-coated copper to the top of an original vapour barrier. The attached excerpts from the original shop drawings illustrate the components described in the specification which should be anticipated for removal as part of the required roof demolition (reference details 1/14, 1/15 and 1/23, attached).

9. Due to the challenge caused by receiving subcontractor pricing at the last minute, we kindly request a two-stage closing. Since we will only receive all our prices within the last minute, we will likely not have picked our subcontractors before then and it will be very difficult to include all the information requested for each subcontractor with our submission in such a short time. We propose to provide a hard copy of the total price and bid bond at the closing date and time with all the other documents to be submitted within 48 hours of the closing time. This would be more in line with what is typically done in the construction industry.
 - a. All documents must be received by the bid closing date and time indicated in the tender. Please note that the deadline for submission has been extended, refer to Addenda #2 issued on September 13, 2017.

10. In ITT D.3.2.3.5, please clarify if the Temporary Work Subcontractor means the Scaffolding subcontractor.
 - a. The Temporary Works Sub-Contractor does refer to scaffolding installation.

11. Please provide the number of light fixtures and their approximate location as referenced in drawing 1197A-21C and note #8 in the legend for the exterior covered corridors.
 - a. The quantity of fixtures are specified in Appendix L (English) and Appendix M (French). General locations are also shown on the electrical drawings and the locations of the exterior covered public corridors themselves are defined on drawing 1197A-11'B'; Appendix F (English) and Appendix G (French).

12. Please provide a legend for the typical sections in the B6 Series Roof Replacement Drawings. The drawings have numbers for various components and no corresponding descriptions.
 - a. Drawing notes are included at the beginning of Appendix O.

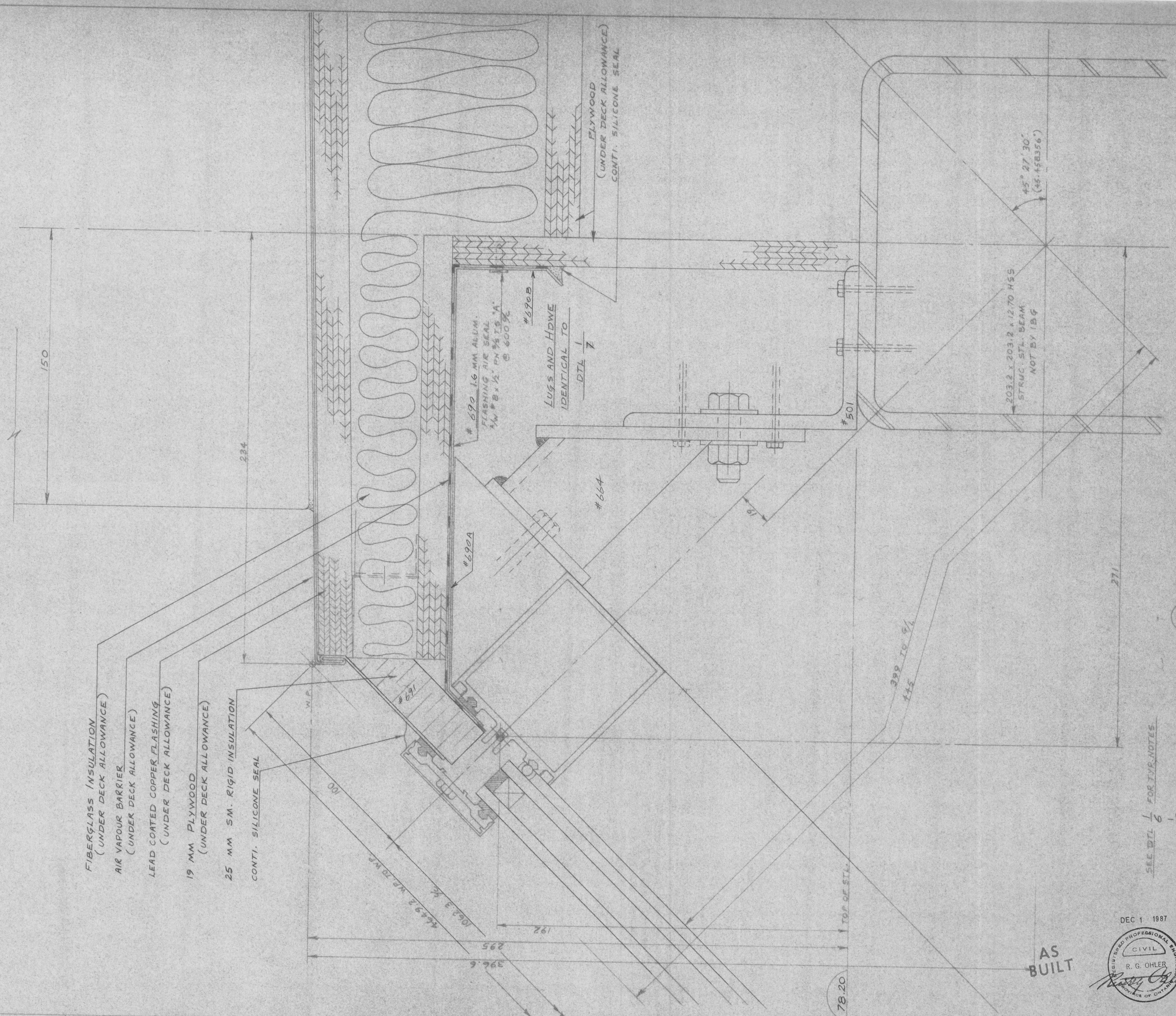
13. Please provide the detail showing the sill repair at Colonnade?
 - a. See Drawing B6.01, Appendix Q

14. Appendix Q – On drawing B4.04 by CLEB, there are 2 details coded as 1/B6.24 (i.e. rafter and horizontal purlin). Please confirm whether that is meant to be the case or whether this was a typo.
 - a. The detail is similar at both locations

15. Please confirm if there is any work required to the external doors.
 - a. No work is required at the exterior doors.



16. Please confirm if it is possible to coordinate any further Site Visits including access to the roof?
 - a. The NGC is unable to offer a 2nd site visit.



CROSS SECTION THRU RIDGE FURLIN AT PLATFORM ELEV. 78.20

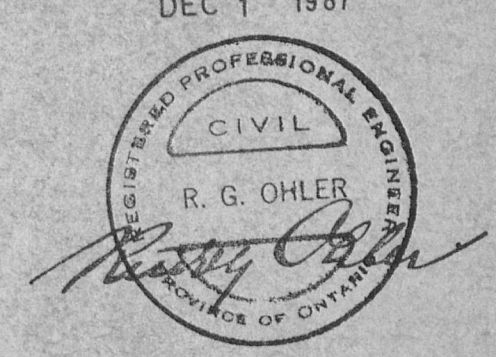
1/4

A-1656 SIM

SEE DTL 1/6 FOR TYPE NOTES

DEC 1 1987

AS BUILT



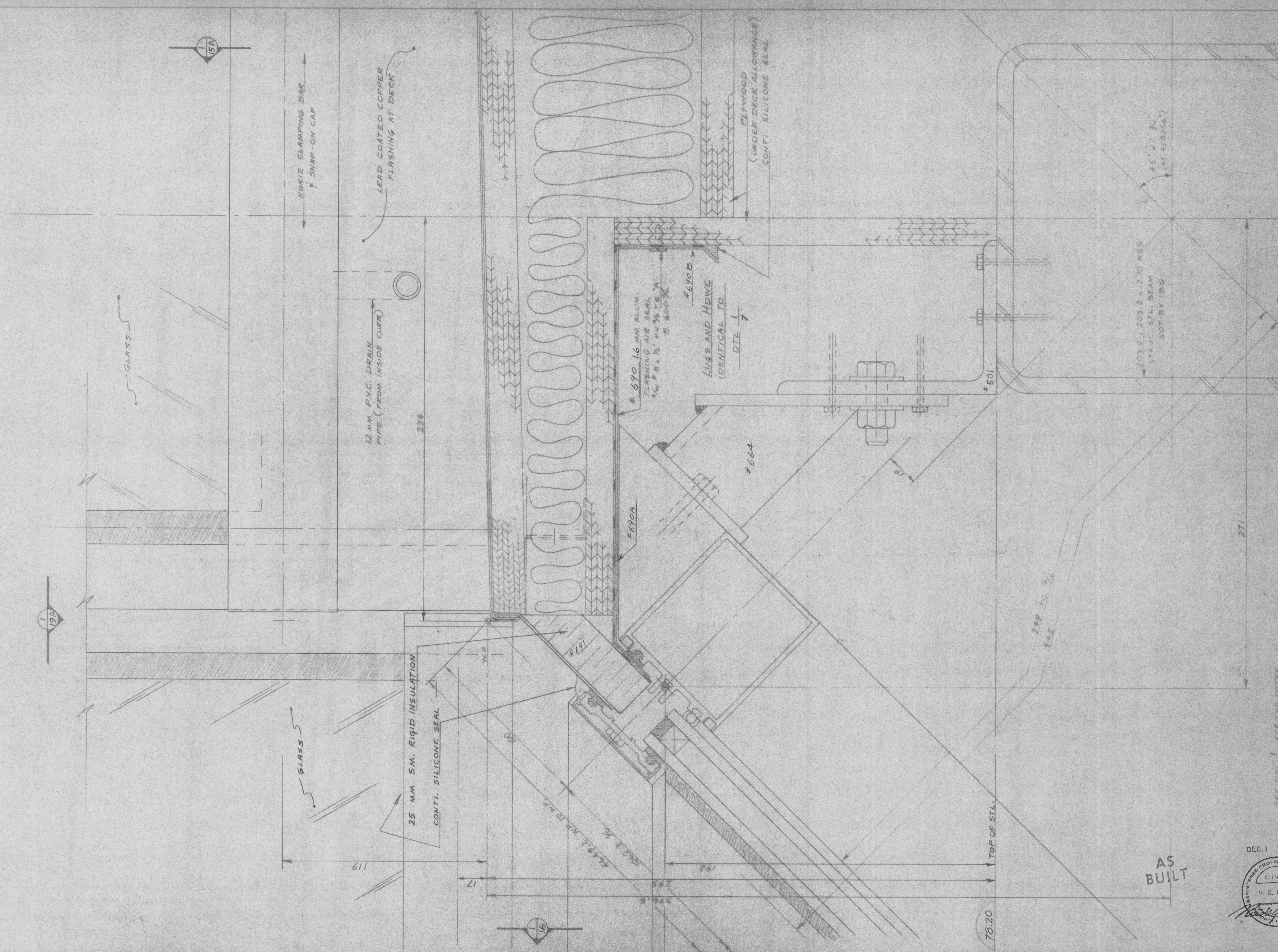
1 REVISED AS PER ARCH. APPROVAL + ARCH. SKETCH C (APRIL 24/86) LONG			
REVISIONS	DATE	CHECKED BY	DATE
	5/3/86		
DRAWN BY	DATE	CHECKED BY	DATE

IBG CANADA LTD.
 ADVANCED GLAZED STRUCTURE SPECIALISTS
 P.O. Box 2000, Beamsville, Ontario L0R 1B0 416-563-8276

SCALE	1:1	FOUR	
DRAWN BY	BLG	DATE	
CHECKED BY		DATE	

RIDGE DETAIL AT PLATFORM ELEV. 78.20
 THE NATIONAL GALLERY OF CANADA, OTTAWA, ONT.
 ARCHITECT - PARKIN/SAFDIE
 CONST. MGR - ELLIS-DON LTD

DRAWING NUMBER
 PLAN NUMBER
 57-5029
 SHEET NUMBER
 SK 18-14



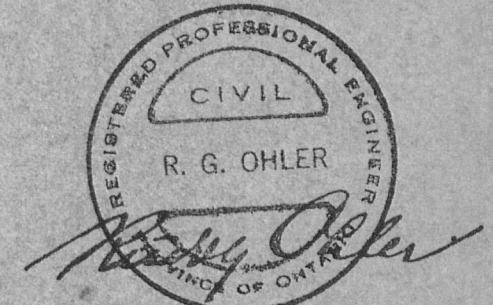
CROSS SECTION THRU RIDGE FURLIN AT PLATFORM (ELEV. 78.20) AND VALLEY

1/14

A-1656 SIM

SEE DT. 1 FOR TYP. NOTES
1/13

DEC 1 1987



AS BUILT

78.20
TOP OF STL.

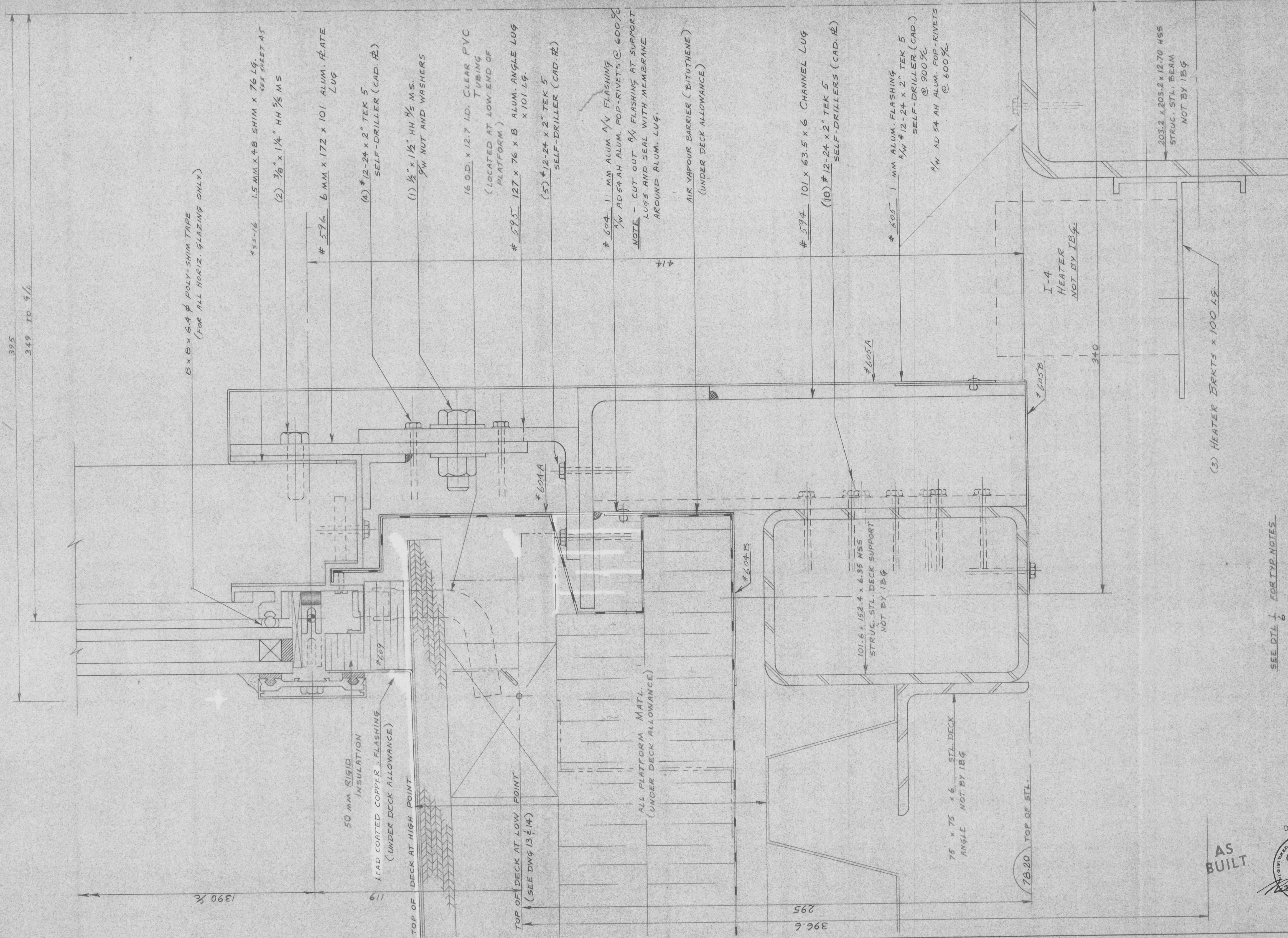
IBG CANADA LTD.
ADVANCED GLAZED STRUCTURE SPECIALISTS
P.O. Box 2000, Seaside, Ontario L0R 1B0 416-563-8278

RIDGE DETAIL AT PLATFORM (ELEV. 78.20) AND VALLEY
THE NATIONAL GALLERY OF CANADA, OTTAWA, ONT.
ARCHITECT - PARKIN/SAFFIE
CONST. MGR - ELLIS-TIGN LTD

57-3033
18 14

REVISED	DRAWN BY	DATE	CHECKED BY	DATE

SCALE	1/1
DESIGNED BY	BLG
CHECKED BY	



B x B x 6.4 φ POLY-SHIM TAPE
(FOR ALL HORIZ. GLAZING ONLY)

#53-16 1.5 MM X 48 SHIM X 76 LG.
SEE SHEET A5
(2) 3/8" x 1 1/4" HH 5/8 MS

#596 6 MM X 172 X 101 ALUM. PLATE LUG

(4) #12-24 x 2" TEK 5 SELF-DRILLER (CAD. #2)

(1) 1/2" x 1 1/2" HH 1/2 MS. 5/8 NUT AND WASHERS

16 OD. x 12.7 ID. CLEAR PVC (LOCATED AT LOW END OF PLATFORM)

#595 127 x 76 x 8 ALUM. ANGLE LUG x 101 LG.

(5) #12-24 x 2" TEK 5 SELF-DRILLER (CAD. #2)

#604 1.1 MM ALUM AV FLASHING 3/4 AD54AH ALUM. POP-RIVETS @ 600%
NOTE - CUT OUT AV FLASHING AT SUPPORT LUGS AND SEAL WITH MEMBRANE AROUND ALUM. LUG.

AIR VAPOUR BARRIER (BITUTHENE) (UNDER DECK ALLOWANCE)

#594 101 x 63.5 x 6 CHANNEL LUG
(10) #12-24 x 2" TEK 5 SELF-DRILLERS (CAD. #2)

#605 1 MM ALUM. FLASHING 3/4 AD54AH ALUM. POP-RIVETS @ 900%
1/4 AD54AH ALUM. POP-RIVETS @ 600%

78.20 TOP OF STL.

75 x 75 x 6 STL DECK ANGLE NOT BY IBG

101.6 x 152.4 x 6.35 HSS STRUC. STL DECK SUPPORT NOT BY IBG

I-4 HEATER NOT BY IBG

(3) HEATER BRKTS x 100 LG

203.2 x 203.2 x 12.70 HSS STRUC. STL BEAM NOT BY IBG

1	REVISED AS PER ARCH. APPROVAL + ARCH. SKETCH B (APRIL 24/86) LONG			
		DRAWN BY	DATE	CHECKED BY
			5/5/86	

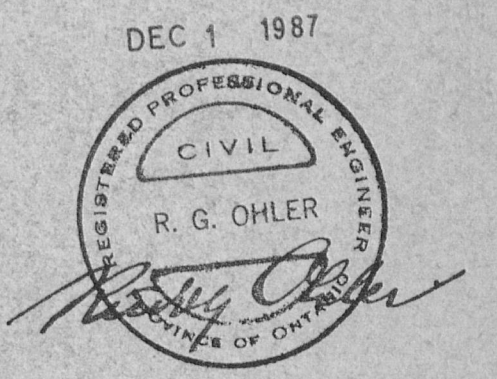
IBG CANADA LTD.
ADVANCED GLAZED STRUCTURE SPECIALISTS
P.O. Box 2000, Beamsville, Ontario L0R 1B0 416-563-8276

SCALE	1:1	FOLIO	
DRAWN BY	BLG	DATE	
CHECKED BY		DATE	

REGULAR SIDE WALL CURB DETAIL ELEV. 78.20
THE NATIONAL GALLERY OF CANADA, OTTAWA, ONT.
ARCHITECT - PARKIN/SAFDIE
CONST. MGR - ELLIS-DON LTD. ENTRANCE PAVILION

DRAWING NUMBER	
PLAN NUMBER	57-5029
SHEET NUMBER	SK 18 - 15

AS BUILT



SEE DTL 1 FORTY NOTES

CROSS SECTION THRU REGULAR SIDE WALL CURB AT PLATFORM ELEV. 78.20

1/15
A-1662

LEAD COATED COPPER FLASHING
(UNDER DECK ALLOWANCE)

ALL ROOFING MATERIAL
(UNDER DECK ALLOWANCE)

556 1 MM ALUM. FLASHING
AW # 8 x 1/2" PH 5/8 T.S. "A"
@ 600 c/c
1/4" AD 5/8 AH POP-RIVET
25 MM RIGID INSULATION

1/4" MEMBRANE (BITUTHENE)
(UNDER DECK ALLOWANCE)

IBG CANADA LTD.
ADVANCED GLAZED STRUCTURE SPECIALISTS
P.O. Box 2000, Beamsville, Ontario L0R 1B0 416-563-8276

SCALE 1:1
DRAWN BY *BLG*
CHECKED BY
FOLIO
DATE

RIDGE DETAIL AT PLATFORM ELEV. 87.55
THE NATIONAL GALLERY OF CANADA, OTTAWA, ONT.
ARCHITECT - PARKIN/SAFDIE
CONST. MGR. - ELLIS-DON LTD

CROSS SECTION THRU RIDGE PURLIN
AT PLATFORM ELEV. 87.55

AS BUILT

DEC 1 1987

REGISTERED PROFESSIONAL ENGINEER
CIVIL
R. G. OHLER
PROVINCE OF ONTARIO

DRAWING NUMBER
PLAN NUMBER
57-5029
SHEET NUMBER
5K 18 - 23

A-1660 SIM