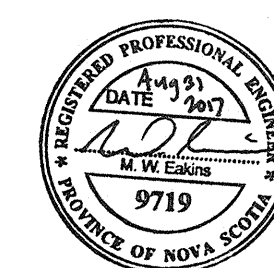


SNC-LAVALIN Inc.
Halifax, Nova Scotia, Canada
Member of the SNC-LAVALIN Group



CO1	ISSUED FOR ADDENDUM No. 001	AUG 31 2017
revisions		date

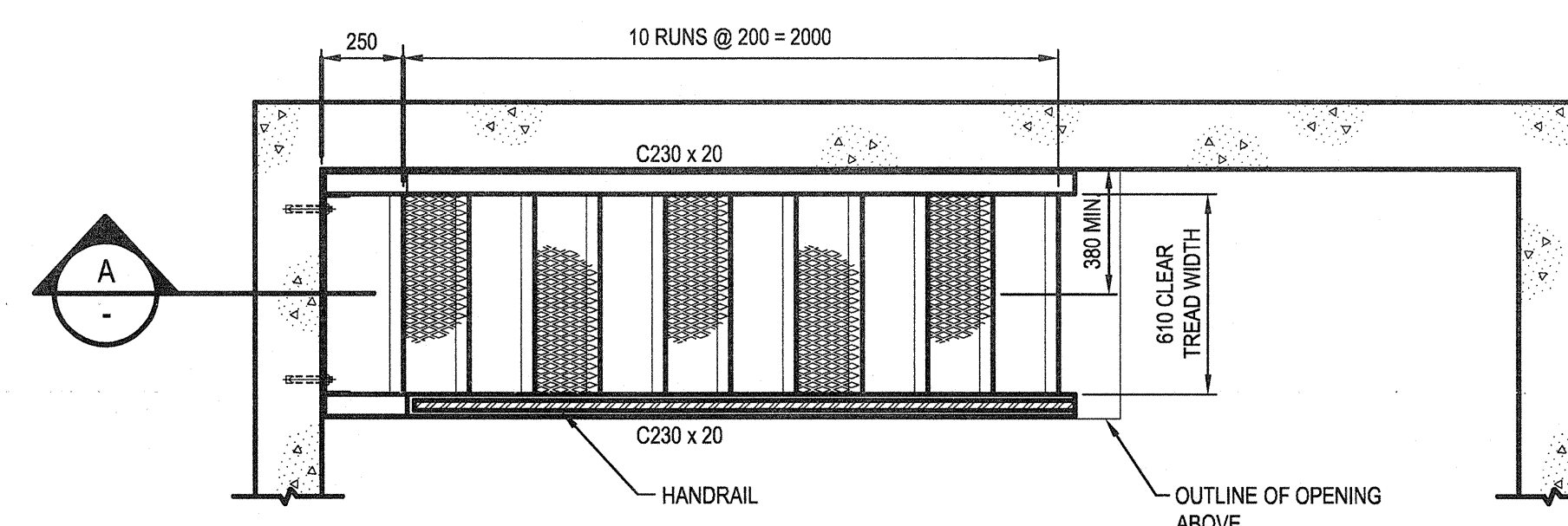
project
**BEDFORD INSTITUTE
OF OCEANOGRAPHY
DARTMOUTH, NS**
SECOND ACCESS ROAD

drawing
**PRV CHAMBER
SECTIONS AND DETAILS
- SHEET 2**

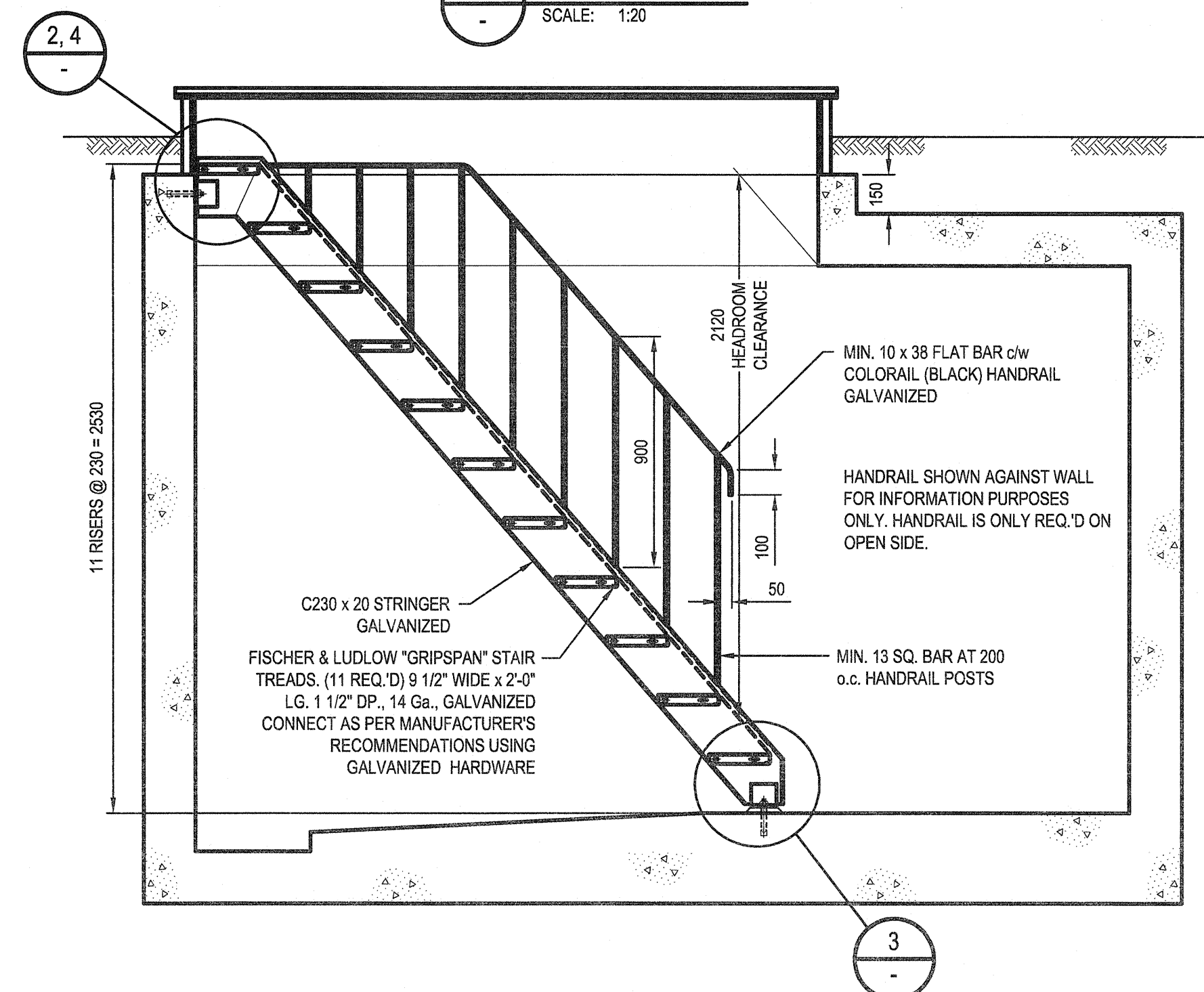
designed	JG	conçu	
date			
drawn	DPB	dessiné	
date			
approved	ME	approuvé	
date			
Tier 1		Scouté	
PWGSC Project Manager		Administrateur de projet TPSGC	
project number		no. du projet	
drawing no.		no. du dessin	

R.073592.001

C26



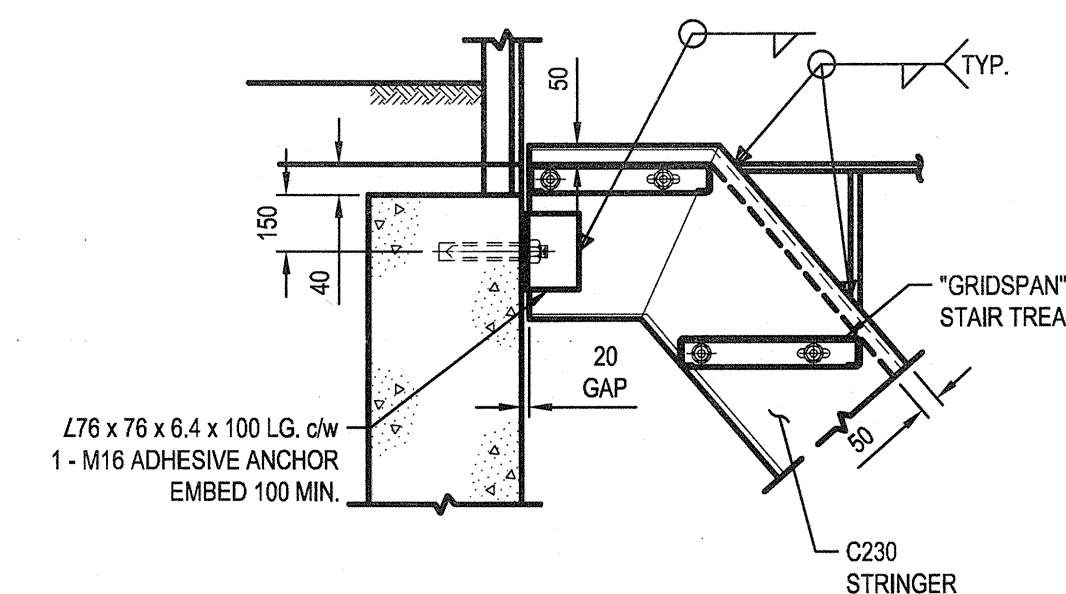
1 STAIR PLAN
SCALE: 1:20



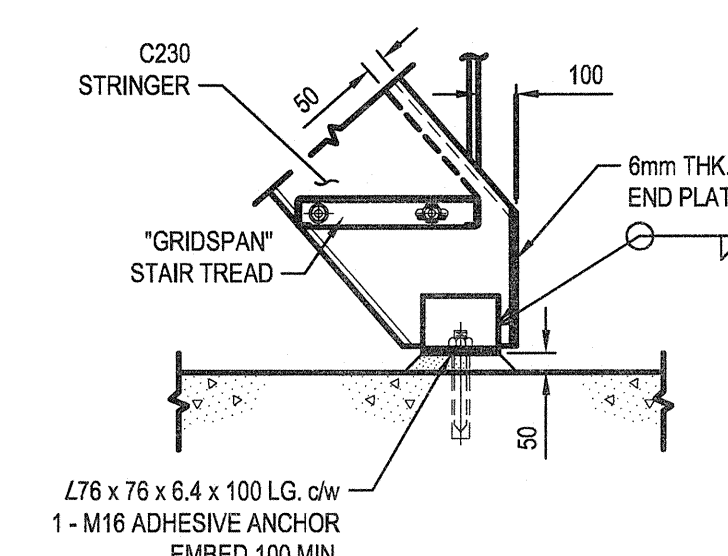
A CHAMBER SECTION
SCALE: 1:20

STRUCTURAL NOTES:

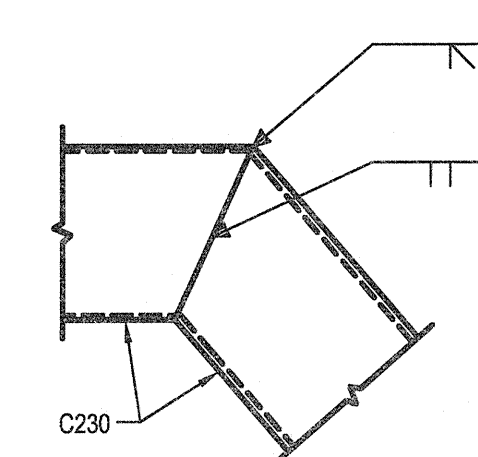
- ALL WORK AND MATERIALS SHALL CONFORM TO REQUIREMENTS OF NATIONAL BUILDING CODE OF CANADA, 2015.
- DESIGN LADDER AND HANDRAIL IN ACCORDANCE WITH APPLICABLE DESIGN LOADS TO ANS-A14.3-2008 AND NS OSHA.
- DESIGN TO BE PERFORMED BY STRUCTURAL ENGINEER REGISTERED IN PROVINCE OF NOVA SCOTIA. SUBMIT STAMPED SHOP DRAWINGS FOR REVIEW PRIOR TO FABRICATION.
- NO ALTERATIONS TO STRUCTURAL DETAILS SHALL BE MADE WITHOUT WRITTEN PERMISSION OF STRUCTURAL ENGINEER.
- THE CONTRACTOR SHALL COORDINATE DETAILS SHOWN ON STRUCTURAL DRAWINGS WITH CIVIL DRAWINGS AND SPECIFICATIONS.
- STRUCTURAL STEEL MATERIALS AND FABRICATION TO CAN/CSA G40.20-13/G40.21-13 TO FOLLOWING GRADES:
 - W, WWF, GRADE 350W.
 - C/S ANGLES PLATES & BARS - GRADE 300W.
- STRUCTURAL STEEL DESIGN AND ERECTION TO CSA S16-14.
- WELDING DESIGN AND PRACTICE TO CSA W59-13. WELDING ELECTRODES TO CSA W48-06.
- STRUCTURAL STEEL FABRICATOR, ERECTOR AND WELDERS TO BE CERTIFIED BY AND QUALIFIED IN ACCORDANCE WITH CSA STANDARD W47.1-09 DIVISION 1 OR 2.1. SUBMIT DOCUMENTATION CONFORMING CERTIFICATION PRIOR TO FABRICATION.
- DO NOT SPLICE STRUCTURAL STEEL MEMBERS WITHOUT PRIOR WRITTEN APPROVAL FROM ENGINEER. APPROVAL SPLICES TO BE FOR FULL MEMBER STRENGTH. EXAMINE SPLICE WELDS BY 100% RADIOGRAPHIC TESTING.
- MINIMUM WELDS FOR CONNECTIONS TO BE 5mm FILLET WELDS. WELDS SHALL BE CONTINUOUS U.N.O GRIND SMOOTH WHERE EXPOSED.
- ALL STEEL TO BE HOT DIPPED GALVANIZED AFTER FABRICATION.
- ALL PIPE TO BE SCH 40.



2 DETAIL
SCALE: N.T.S.



3 DETAIL
SCALE: N.T.S.



4 CRANKED STRINGER - DETAIL
SCALE: N.T.S.