



Invitation to Tender (ITT)
Lighting of the Garage Parkade
Reference #: NGC112012
Buy and Sell Reference #: PW-17-00792061
September 18, 2017

ADDENDA # 1

This Addendum forms part of the contract documents and is to be read, interpreted, and coordinated with all other parts. The cost of all contained herein is to be included in the contract sum. Acknowledge receipt of this Addendum by inserting its number and date on the Tender Form, specifically article G.2.

1. IN REFERENCE TO DRAWINGS L71-17-001-401 P.01 AND L71-17-001-402 P.01
Add note #9 which shall read: « Mounting heights of all new light fixtures should be the same as the existing light fixtures. »
2. IN REFERENCE TO DRAWING L71-17-001-401 P.05
Add note #2 which shall read: « Do not remove existing linear fixtures in this corridor. »
See attached drawing which indicates the location of the referenced corridor.
3. **Results of equivalents review**

TYPE	POINT OF NON-EQUIVALENCY	CRITERIA INDICATED IN THE INVITATION TO TENDER
TYPE A – LITHONIA – OPTION 1	CRI 70 @4000K	CRI 80+ @4000K
	5 YEAR WARRANTY	10 YEAR WARRANTY
TYPE A – LITHONIA – OPTION 2	CRI 70	CRI 80+
	5 YEAR WARRANTY	10 YEAR WARRANTY
TYPE A – VISIONAIRE LIGHTING	5 YEAR WARRANTY	10 YEAR WARRANTY
	CRI 70	CRI 80+
	LED source isn't shielded from direct view which increases the risk of glare	WaveMax Technology with acrylic lens
	MINIMAL OPERATING TEMPERATURE -40°C, NO MAXIMUM AVAILABLE	-28°C - 35°C OPERATING TEMPERATURE
TYPE A – EATON	5 YEAR WARRANTY	10 YEAR WARRANTY
	CRI 70	CRI 80+
	LED source isn't shielded from direct view which increases the risk of glare	WaveMax Technology with acrylic lens

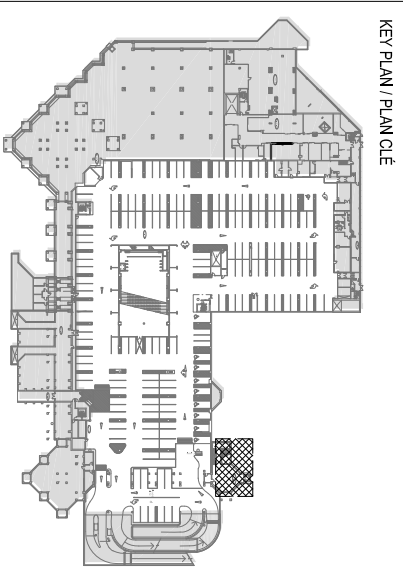


TYPE	POINT OF NON-EQUIVALENCY	CRITERIA INDICATED IN THE INVITATION TO TENDER
TYPE A – BEACON OPTION 1	MINIMUM OPERATING TEMPERATURE NOT INDICATED	-28°C - 35°C OPERATING TEMPERATURE
	5 YEAR WARRANTY	10 YEAR WARRANTY
	IP RATING NOT INDICATED	IP 66
	CRI 70	CRI 80+
	LED source isn't shielded from direct view which increases the risk of glare	WaveMax Technology with acrylic lens
TYPE A – BEACON OPTION 2	LED COLOUR AMBER OR RED ORANGE	4000K CCT
	5 YEAR WARRANTY	10 YEAR WARRANTY
	IP RATING NOT INDICATED	IP 66
TYPE A – EE LIGHTING	IP 54	IP 66
	5 YEAR WARRANTY	10 YEAR WARRANTY
	5900LM LUMEN OUTPUT	7500LM LUMEN OUTPUT
	5000K CCT	4000K CCT
	PHOTOMETRIC DISTRIBUTION NOT AVAILABLE	
	NOT INDICATED	LM80 AND TM21 TESTING MUST BE PROVIDED TO SUPPORT LAMP LIFE DATA
TYPE A – PHILIPS	CRI 70	CRI 80+
	5 YEAR WARRANTY	10 YEAR WARRANTY
	LED source isn't shielded from direct view which increases the risk of glare in this application	WaveMax Technology with acrylic lens
	Peak candela values are between 60 and 80 degrees which increases the risk of glare	Peak candelas at 45 degrees
TYPE B – LITHONIA – OPTION 1	-20°C - 40°C OPERATING TEMPERATURE	-28°C - 35°C OPERATING TEMPERATURE
	5 YEAR WARRANTY	10 YEAR WARRANTY
TYPE B – LITHONIA – OPTION 2	-20°C - 30°C OPERATING TEMPERATURE	-28°C - 35°C OPERATING TEMPERATURE
	5 YEAR WARRANTY	10 YEAR WARRANTY
TYPE B – PACO LIGHTING	OPERATING TEMPERATURE NOT INDICATED	-28°C - 35°C OPERATING TEMPERATURE
	5 YEAR WARRANTY	10 YEAR WARRANTY
	IP RATING NOT INDICATED	IP 66
	CRI NOT INDICATED	CRI 80+
TYPE B – EE LIGHTING	IP RATING NOT INDICATED	IP 20
	5 YEAR WARRANTY	10 YEAR WARRANTY
	NOT INDICATED	LM80 AND TM21 TESTING MUST BE PROVIDED TO SUPPORT LAMP LIFE DATA

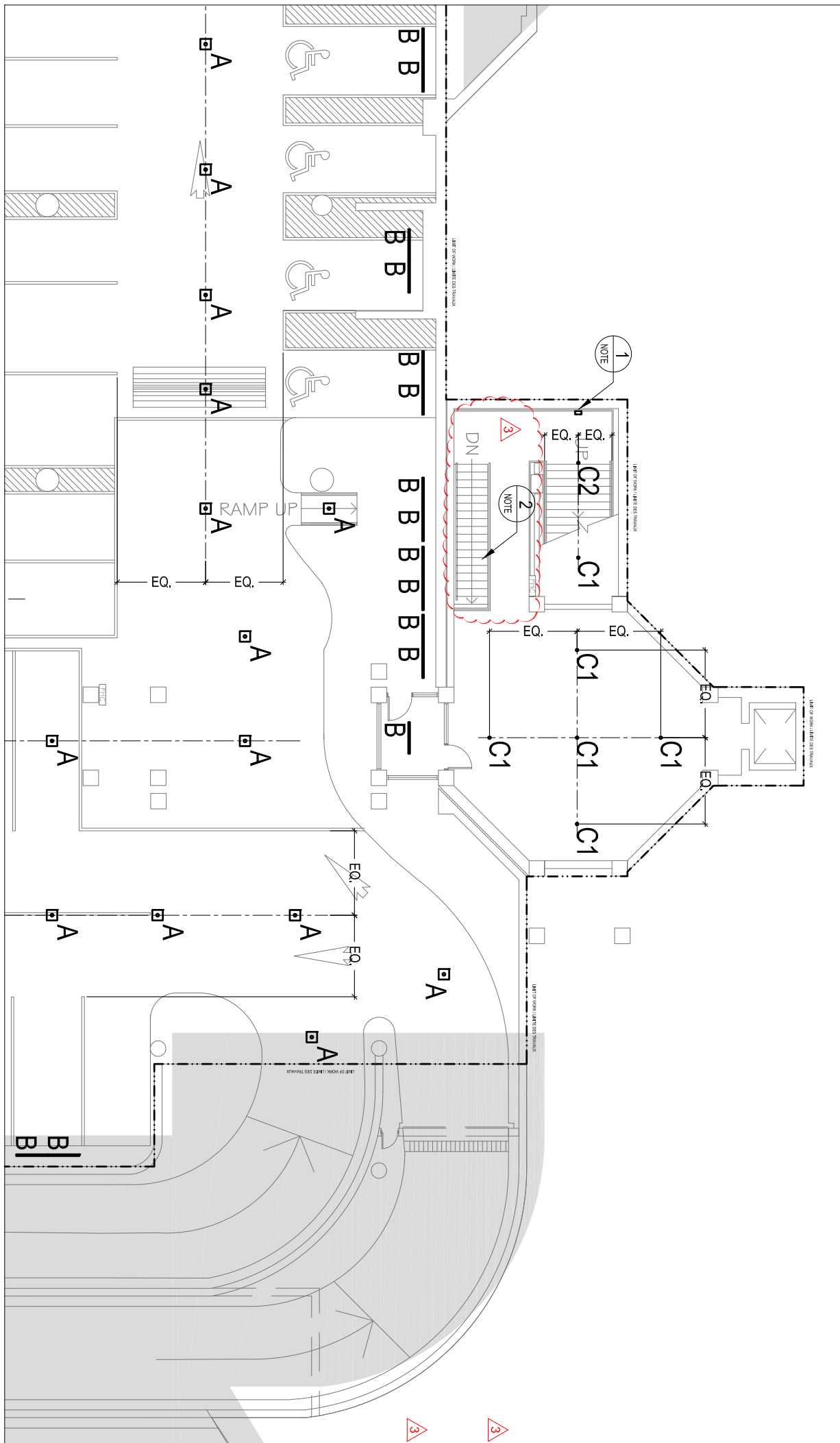


TYPE	POINT OF NON-EQUIVALENCY	CRITERIA INDICATED IN THE INVITATION TO TENDER
TYPE B – PHILIPS	MINIMAL OPERATING TEMPERATURE -20°C, NO MAXIMUM AVAILABLE	-28°C - 35°C OPERATING TEMPERATURE
	5 YEAR WARRANTY	10 YEAR WARRANTY
TYPE B – BRAMAL LED	THIS IS A LED RETROFIT LAMP, NOT AN LED FIXTURE	
TYPE B & BB – EATON	5 YEAR WARRANTY	10 YEAR WARRANTY
	MINIMUM OPERATING TEMPERATURE NOT INDICATED	-28°C - 35°C OPERATING TEMPERATURE
TYPE B – HUBBELL	5 YEAR WARRANTY	10 YEAR WARRANTY
	MINIMUM OPERATING TEMPERATURE NOT INDICATED	-28°C - 35°C OPERATING TEMPERATURE
TYPE C1/C2 – SPECTRUM LIGHTING	MUST DEMONSTRATE THAT 347V STEP DOWN TRANSFORMER IS INTEGRATED	
	MUST DEMONSTRATE cUL CERTIFICATION	cUL
	WARRANTY NOT INDICATED	5 YEAR WARRANTY
TYPE C1– EATON	ACCEPTABLE if step down transformer is integrated in the fixture and has same warranty as the fixture	
TYPE C2– EATON	ACCEPTABLE if step down transformer is integrated in the fixture and has same warranty as the fixture	
TYPE C1 / C2 – CONTECH	ACCEPTABLE	
TYPE C1/C2 – PHILIPS	120V/277V OPERATING VOLTAGE	347V TO COMPLY WITH EXISTING CONDITIONS

PROJECT TITLE / PROJET
 NGC PARKING
 STATIONNEMENT MBAC
 71-17-001



KEY PLAN / PLAN CLÉ



- SPECIFIC NOTES**
1. REMOVE EXISTING FIXTURE AND CONDUIT TO THE NEAREST JUNCTION BOX.
 2. DO NOT REMOVE EXISTING LINEAR FIXTURES IN THIS CORRIDOR.

- NOTES SPÉCIFIQUES**
1. RETIRER LE LUMINAIRE EXISTANT ET SON CONDUIT JUSQU'À LA BOÎTE DE JONCTION LA PLUS PROCHE
 2. NE PAS RETIRER LES LUMINAIRES LINÉAIRES EXISTANTS DANS CE CORRIDOR.

DRAWN BY /
 DESSINÉ PAR AS

VERIFIED BY /
 VÉRIFIÉ PAR CS

REVISIONS / RÉVISIONS

- 03 ADDENDA_01 2017-09-14
- 02 FOR TENDER/APPEL D'OFFRES 2017-08-18
- 01 COORDINATION-2017-07-19

NOTES

**FOR TENDER /
 POUR APPEL D'OFFRE**

CS Design

310 Victoria av. suite 408
 Westmount, QC H3Z 2M9
 514.507.4744
 www.designcs.ca