

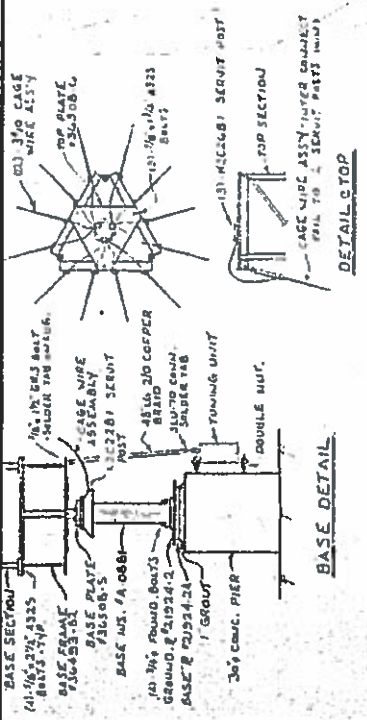
A PARTICULARITÉS DU SITE DE CAP-DES-ROSIERS

C-03 PLANS DU PYLÔNE TX/MF-R1 - 110'

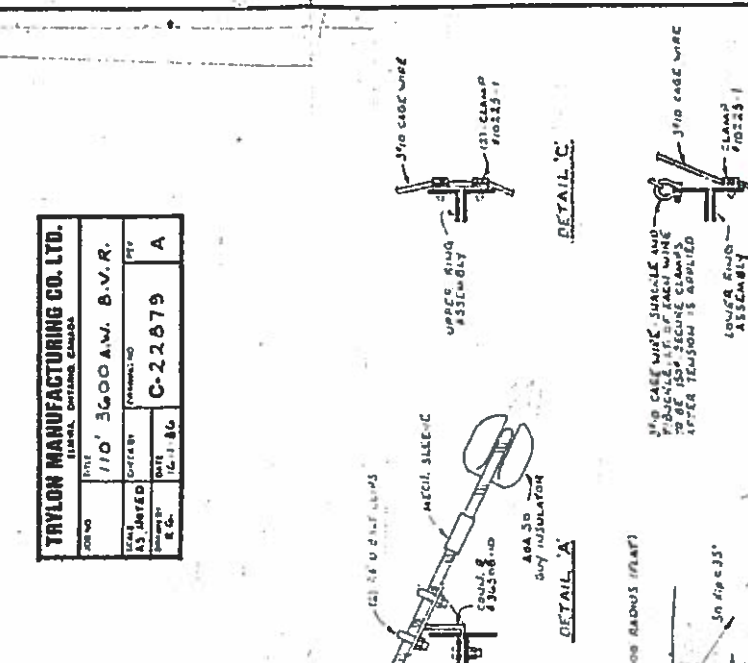
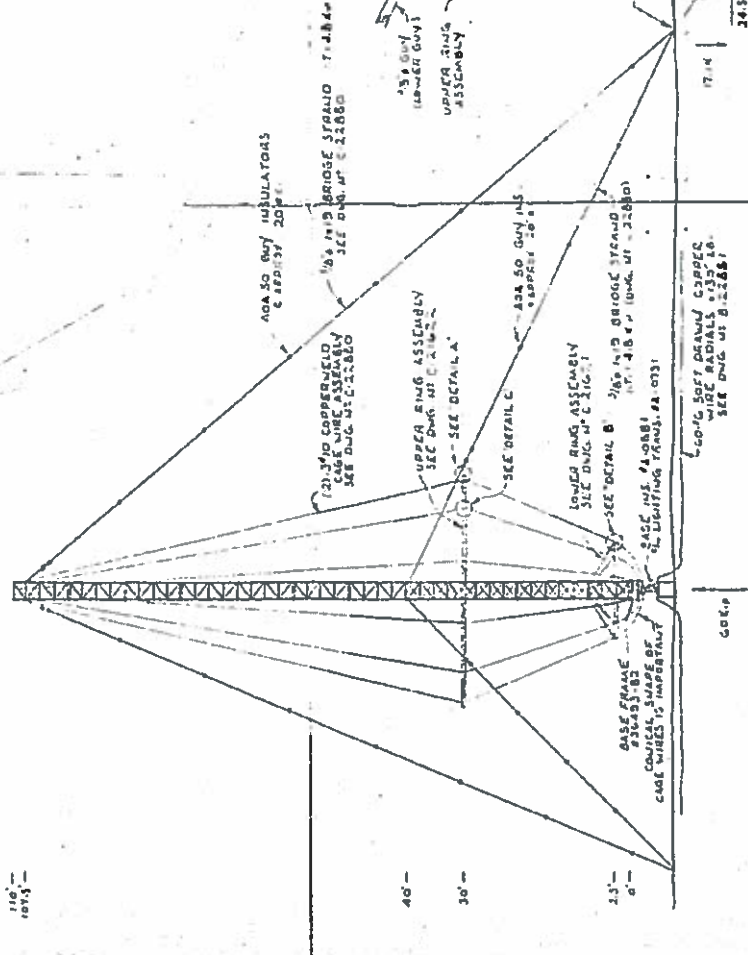
PLANS
05080-06 (2 FEUILLES)
07778 (1 FEUILLE)

PROJET "CAP DES ROSIERS"
REF. DESSIN NO. 081C-86-5090

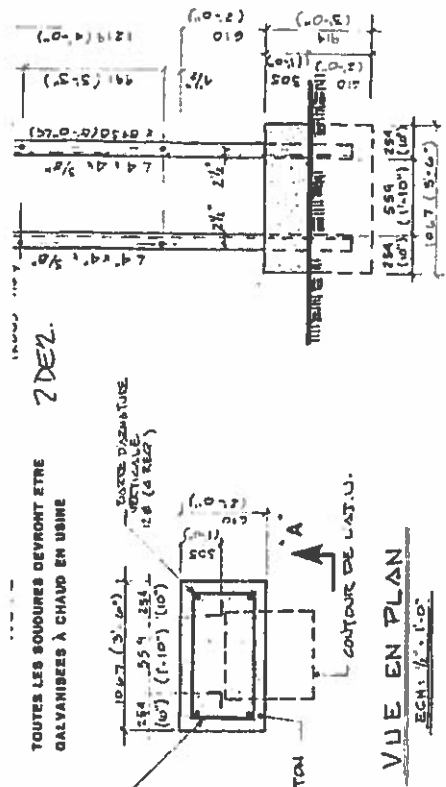
TRAYLON MANUFACTURING CO. LTD. <small>TRAYLON, QUEBEC, CANADA</small>	
Dwg No 110' 3600 A.M. B.V.R.	Date 12.11.86
Scale AS SHOWN	Project C-22679
Drawn by E.C.	App'd A



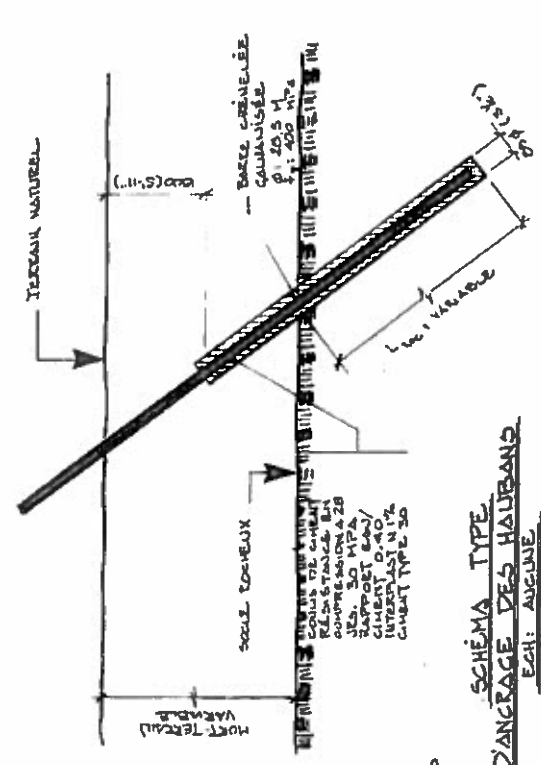
SECTION NO	110' 3600 A.M. B.V.R.
HORIZONTALS	1/2" S.A. BR. 40' 30" C.
DIAGONALS	2" S.A. Y. BRACE
LEGS	1 1/2" S.A. BR. 1" S.A. BAR REGULAR



110' 3600 A.M. B.V.R. VERTICAL BROADBAUD RADIATOR



SUPPORT A.T.J.

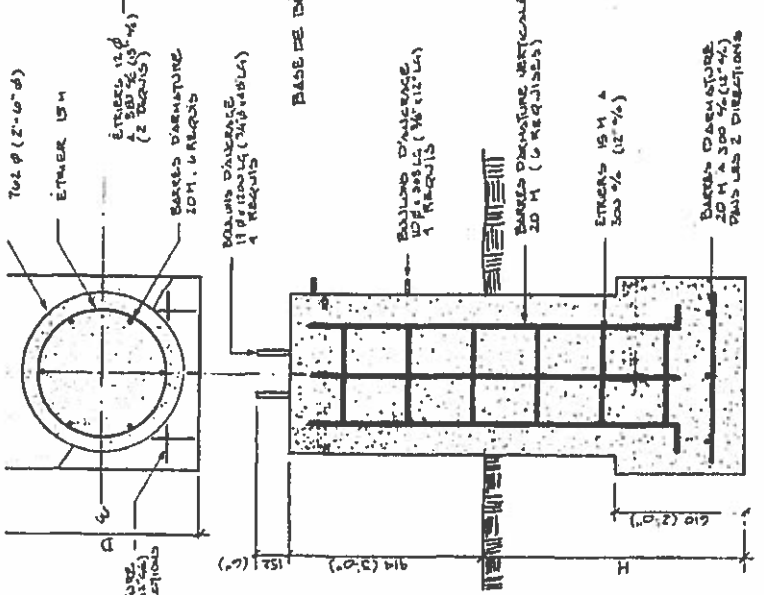


Cap des Rosiers
SITE TELECOM
BASES D'ANTENNES

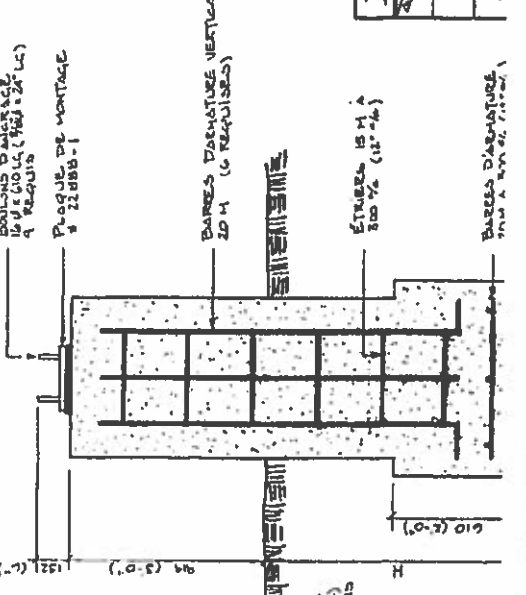
10.67 m
11.5 m
1100 mm
10.67 m

TABLEAU DES DIMENSIONS

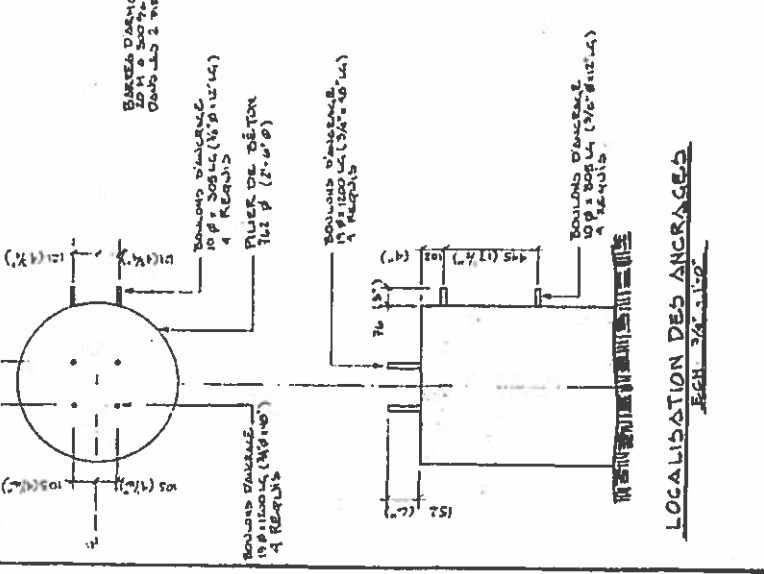
ANTENNE	L	D	H
ANTENNE 1	4.50 m	1.00 m	1.80 m
ANTENNE 2	2.0 m	1.80 m	2.35 m



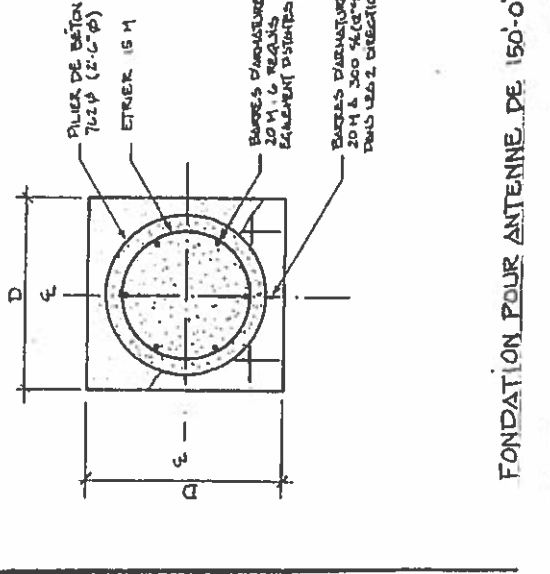
FONDATION POUR ANTENNE DE 110.0'



FONDATION POUR ANTENNE DE 150.0'



LOCALISATION DES ANCRAGES



FONDATION POUR ANTENNE DE 150.0'

