

**A. PARTICULARITÉS DU SITE DE CAP-DES-ROSIERS**

**A-04 PLANS DU PYLÔNE Tx-MF/Cw-NAVTEX – 150'**

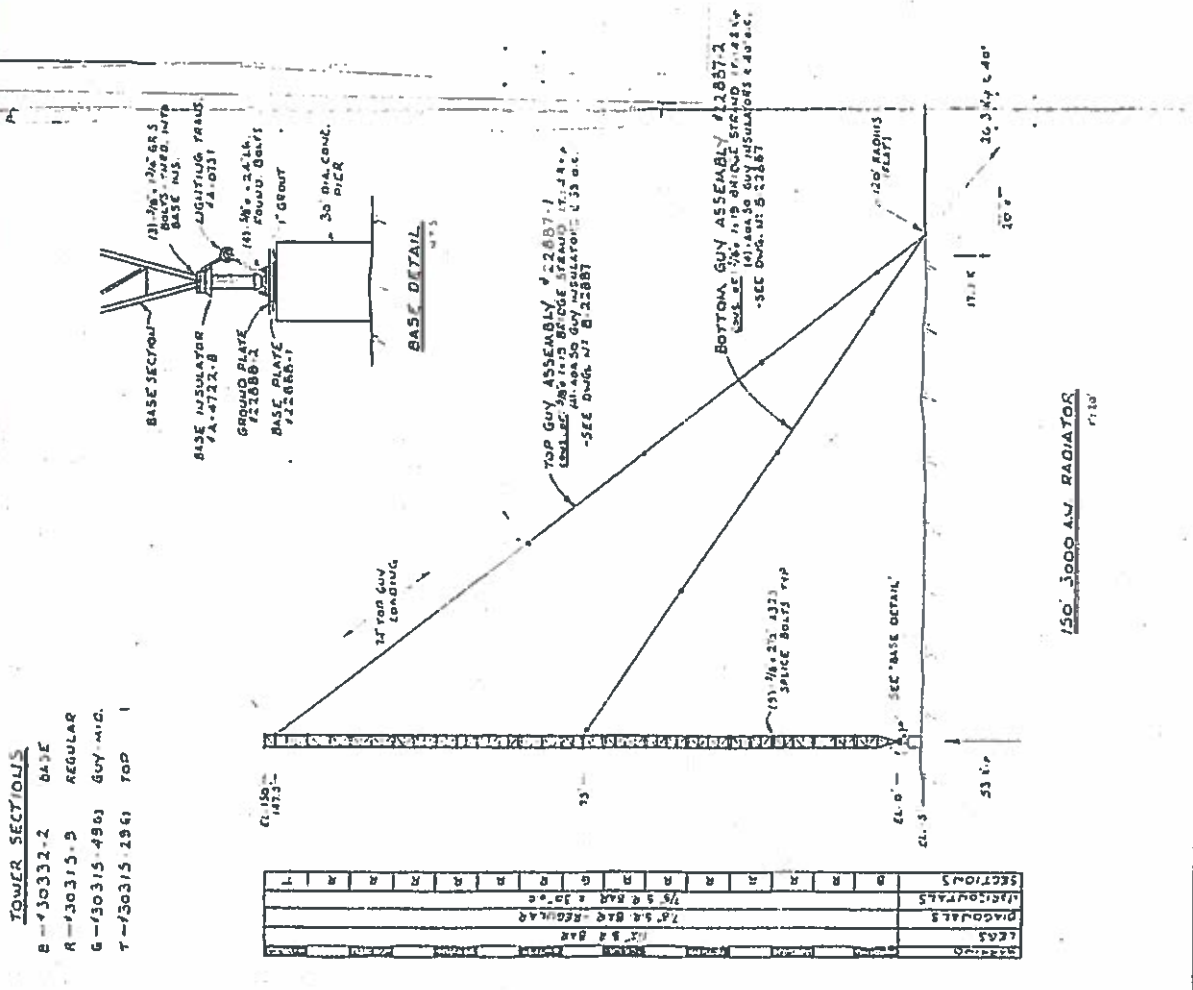
PLANS  
05090-07 (2 FEUILLES)  
07780 (1 FEUILLE)

1 DE 2

**PROJET "CAP DES ROSIERS"**  
 REF. DESSIN NO. QSIC-88-5080

<b>TYLON MANUFACTURING CO. LTD.</b> <small>BOULEVARD DE LA SERRAVALLE, MONTREAL, QUEBEC, CANADA</small>			
DRESS NO. <b>T059-3</b>	TOWER <b>150' 3000 A.M. TOWER</b>	DRAWN BY <b>C-2288C</b>	DATE <b>11.03.84</b>
CHECKED BY <b>[Signature]</b>	APPROVED BY <b>[Signature]</b>	CLASS <b>A</b>	SHEET NO. <b>1</b>

TOWER DESIGNED IN ACCORDANCE WITH CSA S37-1516, 2002 °C CLASS 'M'  
 FOUNDATIONS BASED ON NORMAL DRY SOIL



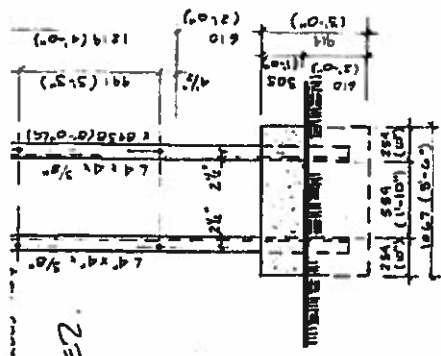
**TOWER SECTIONS**

- B - 150332-2 BASE
- A - 150315-5 REGULAR
- G - 150315-4803 GUY M.C.
- T - 150315-1961 TOP

SECTION	SECTION NO.	SECTION NAME	SECTION TYPE
BASE	150332-2	BASE	BASE
REGULAR	150315-5	REGULAR	REGULAR
GUY M.C.	150315-4803	GUY M.C.	GUY M.C.
TOP	150315-1961	TOP	TOP

**150' 3000 A.M. RADIATOR**  
 FIG. 1

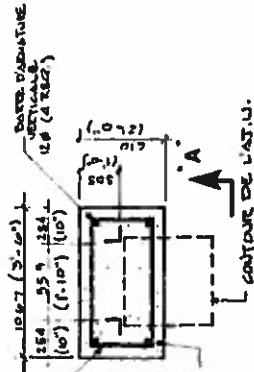
3000 A.M. RADIATOR  
 FIG. 1



ELEVATION A  
ECH. 1/4 - 1/0

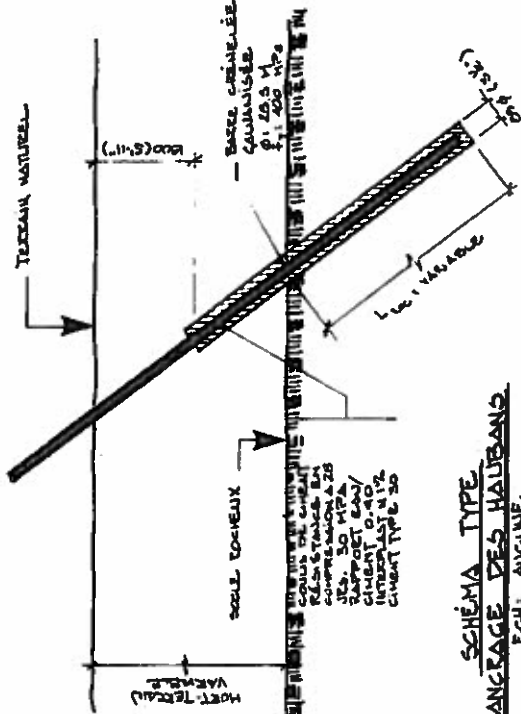
TOUTES LES SOUDURES DEVONT ETRE GALVANISEES A CHAUD EN USINE

IDEZ.



VUE EN PLAN  
ECH. 1/4 - 1/0

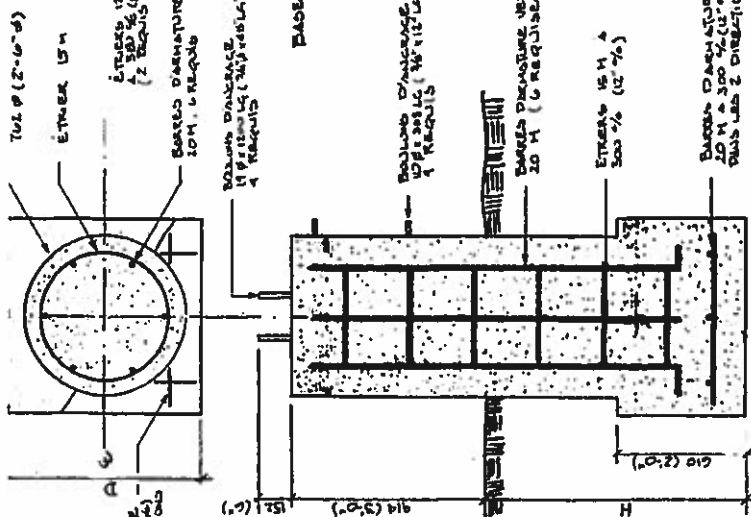
SUPPORT A.T.U.



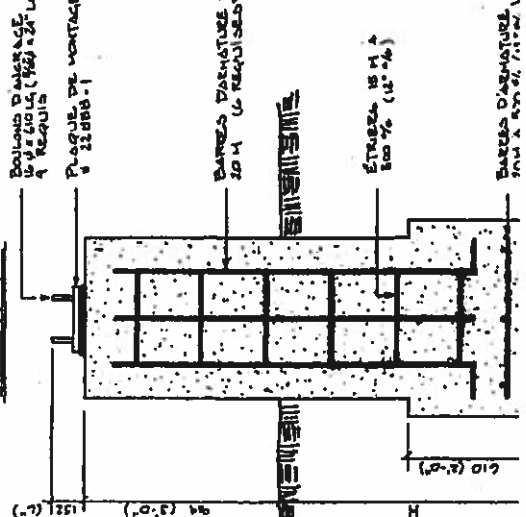
SCHEMA TYPE  
D'ANCRAGE DES HAUBAINS  
ECH. AUGMENTE

CAP DES ROSSIERS	
SITE TELECOM	
BASES D'ANTENNES	
Scale: 1/4	Date: 19/01/86
Project No: 58000000	Sheet No: 20/01
Author: J. P. B.	Scale: 1/4
Drawn: J. P. B.	Scale: 1/4

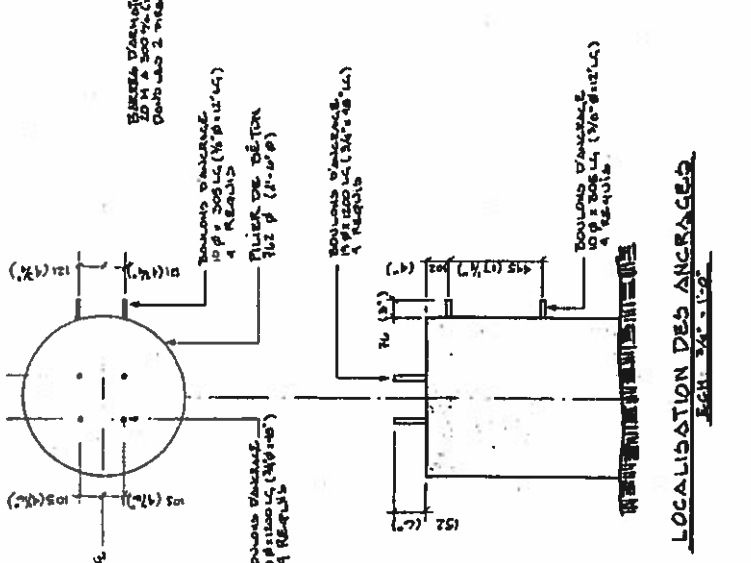
TABLEAU DES DIMENSIONS			
ANTENNES	L	D	H
ANTENNE 1	4.50 m	1.00 m	1.80 m
ANTENNE 2	2.0 m	1.80 m	2.35 m



FONDATION POUR ANTENNE DE 110°  
ECH. 3/4 - 1/0



FONDATION POUR ANTENNE DE 150°  
ECH. 3/4 - 1/0



LOCALISATION DES ANCRAGES  
ECH. 3/4 - 1/0

