

APPENDIX 1 – Vessel A “Cape Commodore” Specifications.

APPENDIX A – CCGS CAPE COMMODORE

Official Number: 826367

Call Sign: CG8075

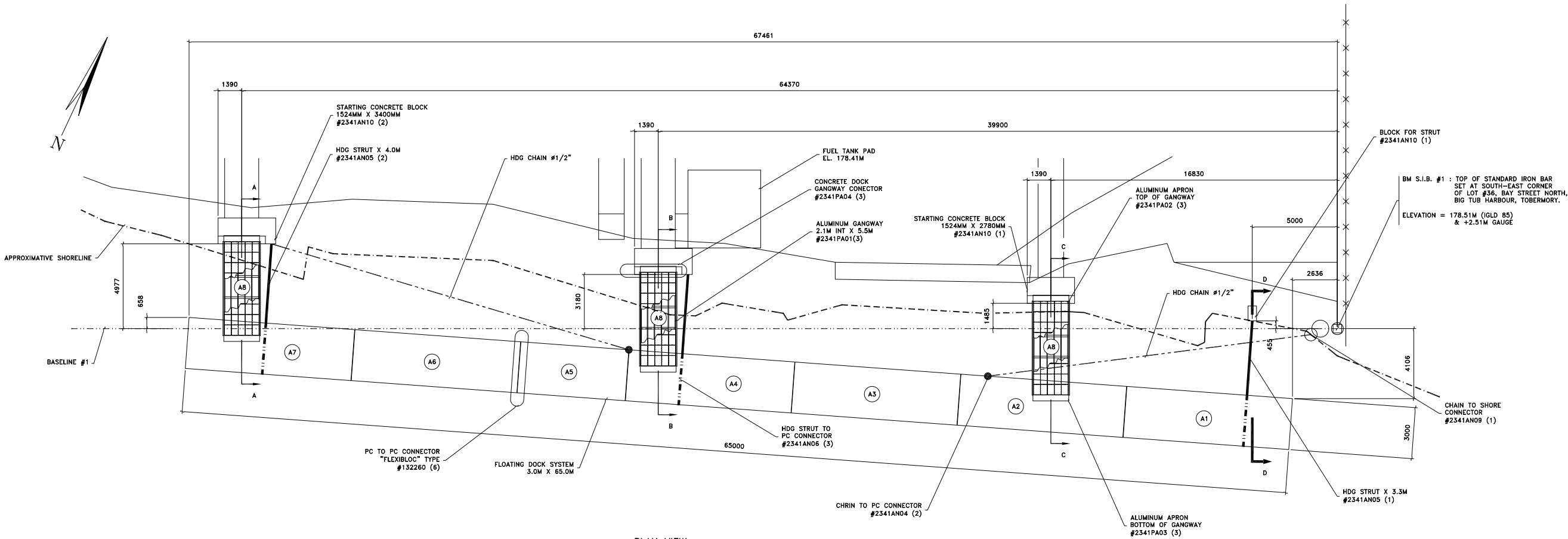


Specifications

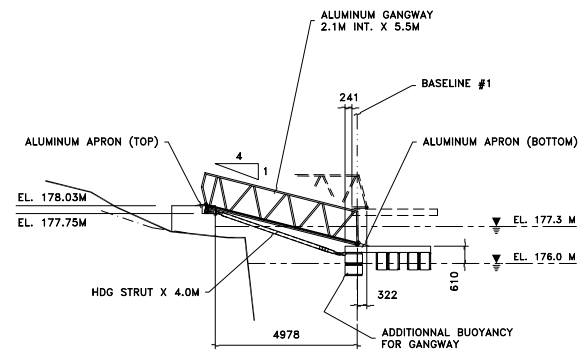
Length: 14.6 m (Metres)
Breadth: 4.3 m (Metres)
Draft: 1.4 m (Metres)
Freeboard: 0.8 m (Metres)
Gross Tonnage: 33.8 t (Tons)
Net Tonnage: 25.3 t (Tons)
Cruising Range: 200 nm (Nautical Miles)
Endurance: 1 d (Days)
Cruising Speed: 22.0 kts (Knots)
Maximum Speed: 25.0 kts (Knots)

Fresh Water: Not Applicable
Fuel Capacity: 1.60 m³ (Cubic Metres)
Fuel Consumption: 2.60 m³/d
Propulsion: Geared Diesel
Main Engines:
(2) x Caterpillar 3196
Power: 671kw (Kilowatts)
Propellers: (2) x Fixed Pitch
Bow thrusters: No
Stern thrusters: No
Emergency Generator:
Generators:
(2) x Shaft Generator
(2) x Alternator

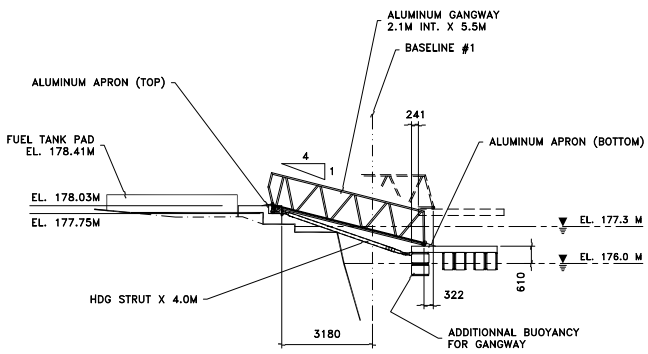
APPENDIX 2 - Existing Drawings.



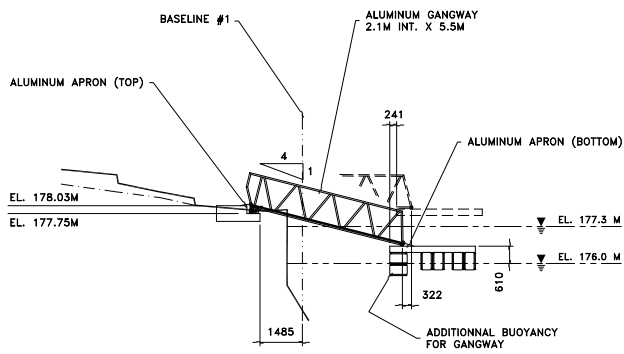
PLAN VIEW



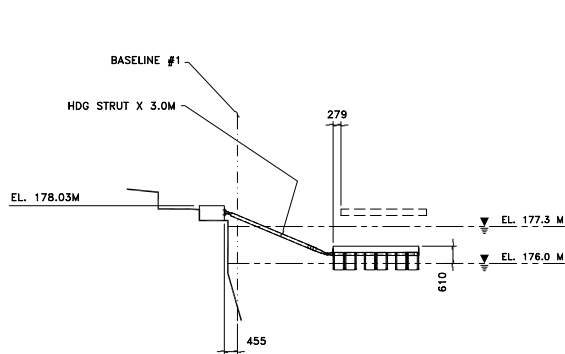
SECTION A-A



SECTION B-B



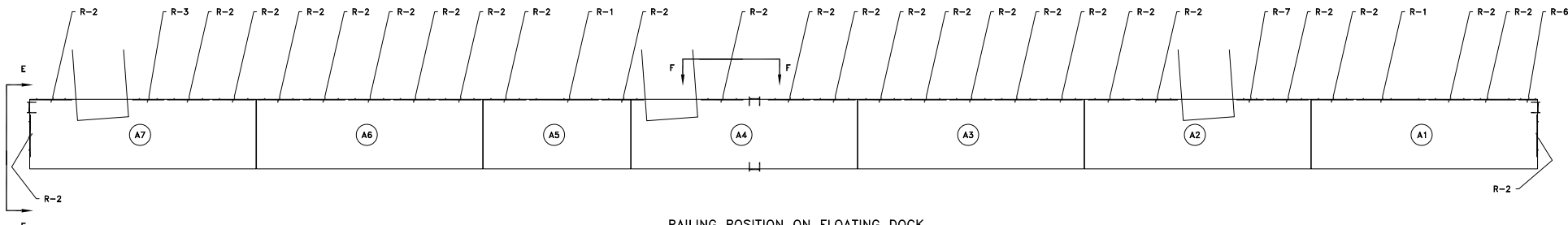
SECTION C-C



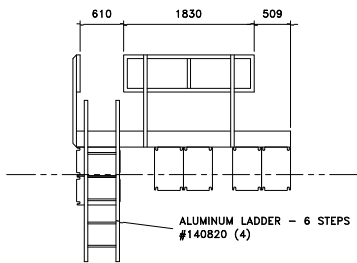
SECTION D-D

LIST OF STRUCTURES						
SECTION	STRUCTURE NO.	STRUCTURE TYPE	PIECE NO.	LENGTH (MM)	DESCRIPTION	QTY
A	A1	DOCK	2341PC02	9754	3 SIDES	1
	A2	DOCK	2341PC01	9754	ADD. BUOYANCY FOR GANGWAY	1
	A3	DOCK	2341PC01	9754	—	1
	A4	DOCK	2341PC01	9754	ADD. BUOYANCY FOR GANGWAY	1
	A5	DOCK	2341PC03	6356	—	1
	A6	DOCK	2341PC01	9754	—	1
	A7	DOCK	2341PC02	9754	3 SIDES & ADD. BUOYANCY	1
	A8	GANGWAY	2341PA01	5522	—	3

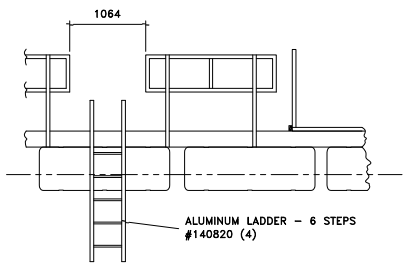
LIST OF RAILINGS					
SECTION	RAILING NO.	PIECE NO.	LENGTH (MM)	DESCRIPTION	QTY
A	R1	2341G001	3000	3 POST	2
	R2	2341G001	1830	2 POST	26
	R3	2341G002	1378	2 POST	1
	R6	2341G002	822	2 POST	1
	R7	2341G002	1168	2 POST	1



RAILING POSITION ON FLOATING DOCK



SECTION E-E
1:50



SECTION F-F
1:50

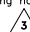
MATERIAL LIST			
SECTION	PIECE NO.	DESCRIPTION	QTY
A	—	FLOATING DOCK SYST. 3.0M	65M
A	2341PA01	GANGWAY 2.1M INT. X 5.5M	3
A	2341PA02	ALUM. APRON TOP	3
A	2341PA03	ALUM. APRON BOTTOM	3
A	2341PA04	CONCRETE DOCK GANGWAY CONN	3
A	2341AN05	HDG STRUT 4.0M	2
A	2341AN05	HDG STRUT 3.3M	1
A	2341AN06	HDG STRUT TO PC CONNECTOR	3
A	—	HDG CHAIN #1/2"	50M
A	132260	PC TO PC CONN. "FLEXIBLOC"	6
A	2341AN04	CHAIN TO PC CONNECTOR	2
A	2341AN09	CHAIN TO SHORE CONNECTOR	1
A	2341AN10	STARTING BLOCK 1524 X 3400	2
A	2341AN10	STARTING BLOCK 1524 X 2780	1
A	2341AN10	BLOCK FOR STRUT	1
A	140820	ALUM. LADDER - 6 STEPS	4

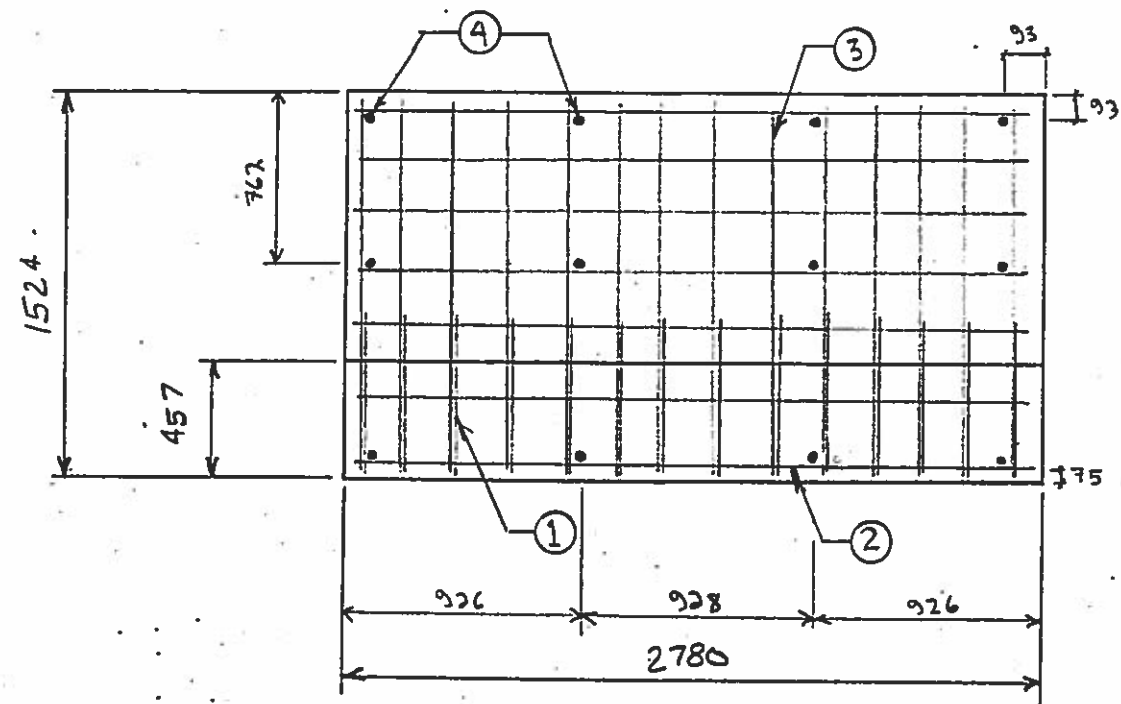
NOTES:

- BUOYANCY: 147 KG/M²
- FREEBOARD: 610MM NOMINAL
- DESIGN CRITERIA:
 - FLOATING DOCK:
 - VERTICAL LOAD: 2.4 KN/M²
 - WIND LOAD: 1 KN/M²
 - HORIZONTAL LOAD (RAILING): 730 N/M
 - GANGWAY:
 - VERTICAL LIVE LOAD: 1.68 KN/M²
 - HORIZONTAL LOAD (RAILING): 730 N/M
- SITE DATA:
 - H.W.L. +177.3M
 - L.W.L. +176.0M
 - BULKHEAD EL. +178.03M
- ALL SITE DIMENSIONS ACCORDING TO DRAWINGS NO. NOBP 97/R12 (MARCH 97) AND DRAWINGS NO. TS001 (98/05/10)

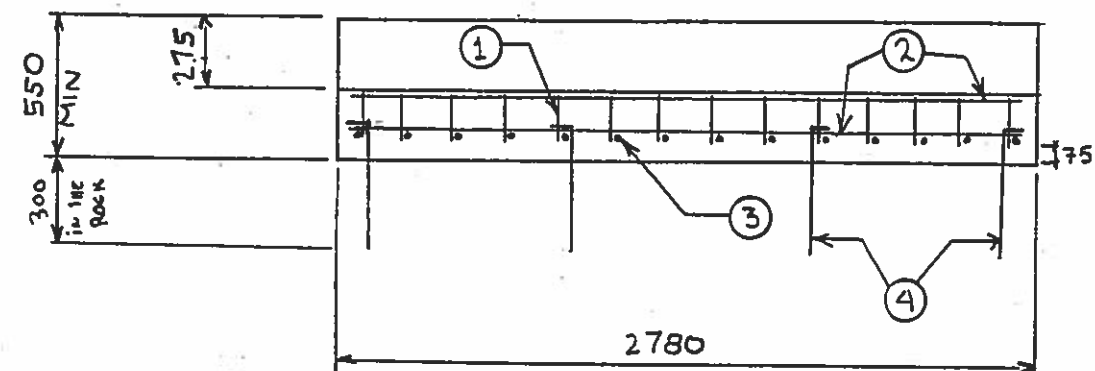
TECHNOMARINE®

ALUMINUM LADDER REVISION	28/04	CB
GENERAL REVISION	04/97	CB
GENERAL REVISION	04/97	CB
No.	Revision	Date
No.	Revision	Date

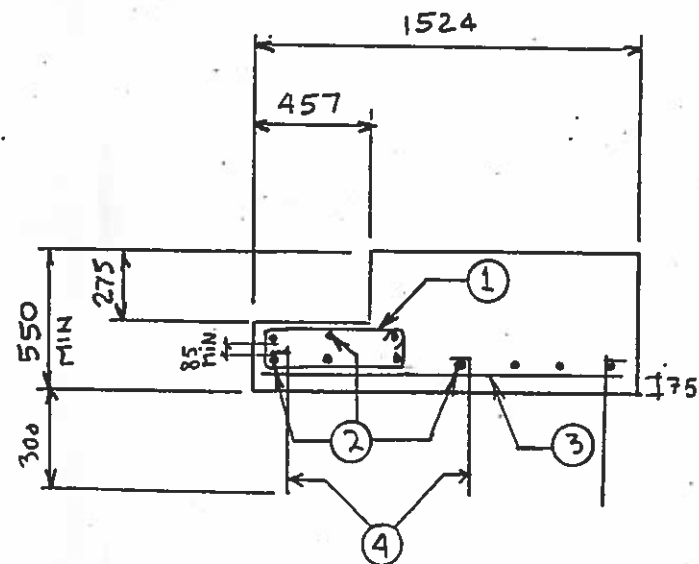
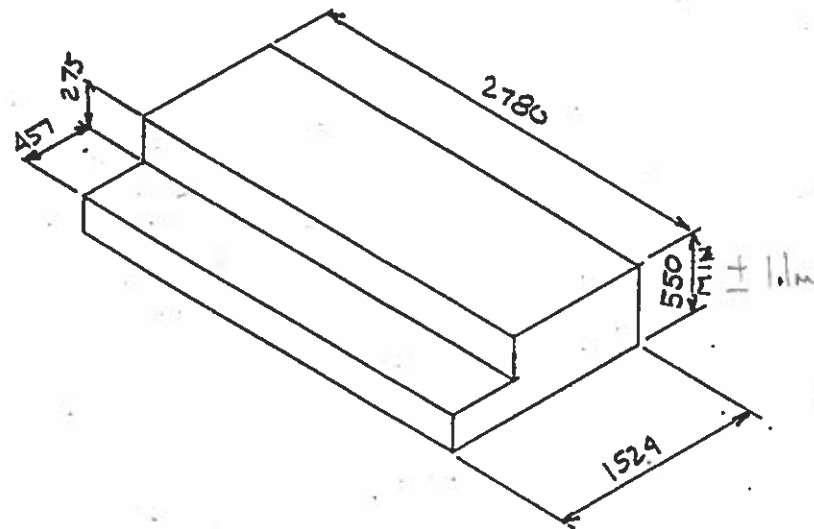
Project		Project	
MARINE OPERATION BASE FLOATING DOCK SYSTEM TOBERMORY, ONTARIO			
Dessin		Drawing	
GENERAL LAYOUT ANCHORING AND INSTALLATION			
Concu par	Designed by	Date	Date
TECHNOMARINE		MARCH, '97	
Dessine par	Drawn by	Date	Date
C. BROUSSEAU		MARCH 26, '97	
Verifie par	Verified by	Date	Date
Approuve par	Approved by	Date	Date
Echelle	Scale	Trace Le:	Printed:
1:125			
No. de projet	2341		Project no.
No. de dessin	2341AM01		Drawing no.
			



PLAN VIEW



ELEVATION VIEW

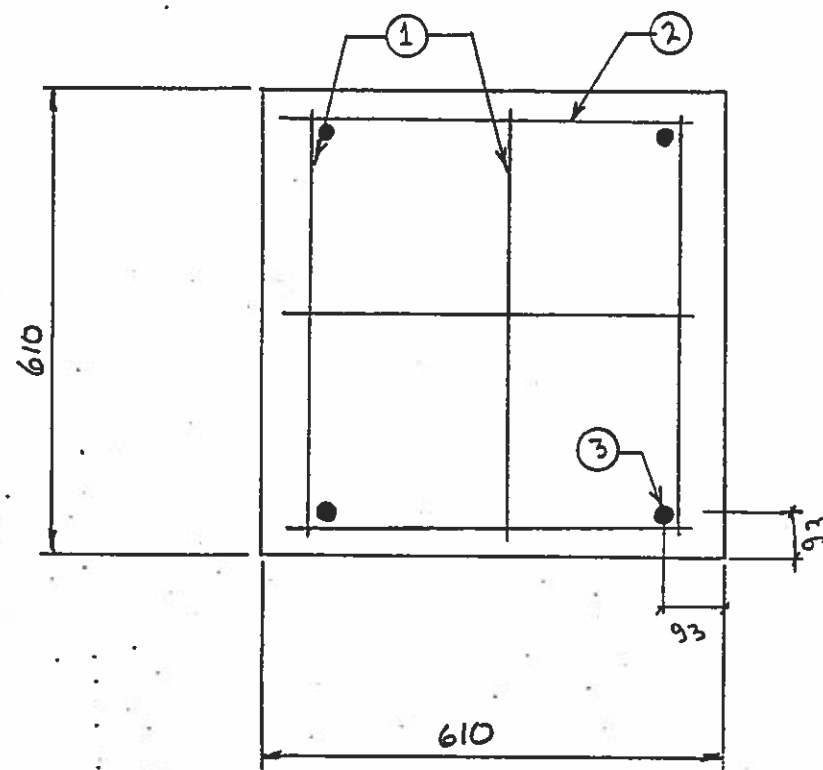


SIDE VIEW

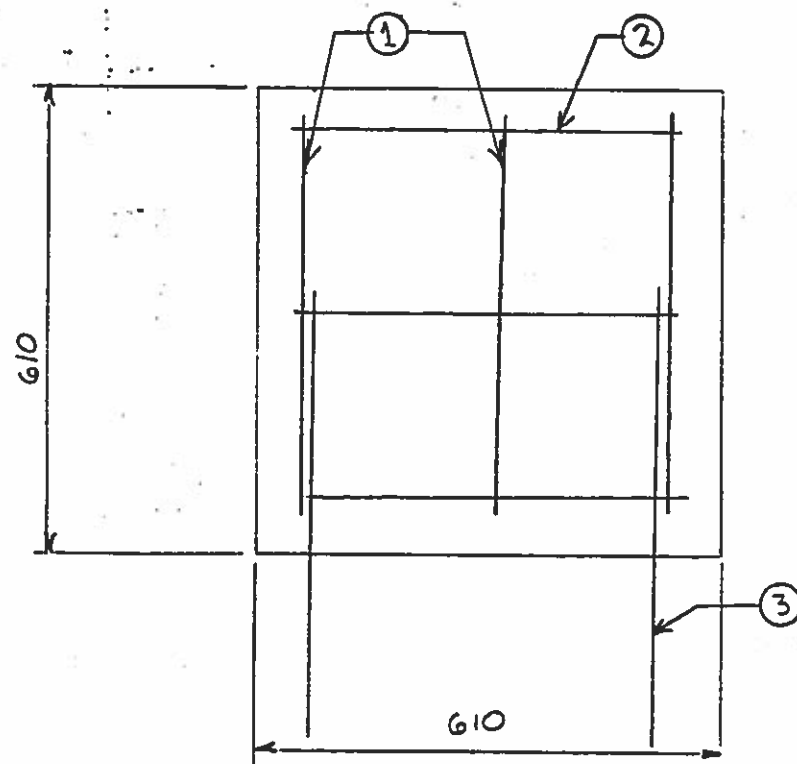
PIECE NO.	DESCRIPTION	QTE QTY
1	TIE 10 M @ 200 mm c/c	14
2	10 M @ 190 mm c/c (2630)	10
3	10 M @ 200 mm c/c (1374)	14
4	15 M (400 x 25 mm)	12
5		
6		
7		
8		
9		
10		
11		
12		
13		
14		
15		
16		
17		
18		
19		
20		

TECHNOMARINE®

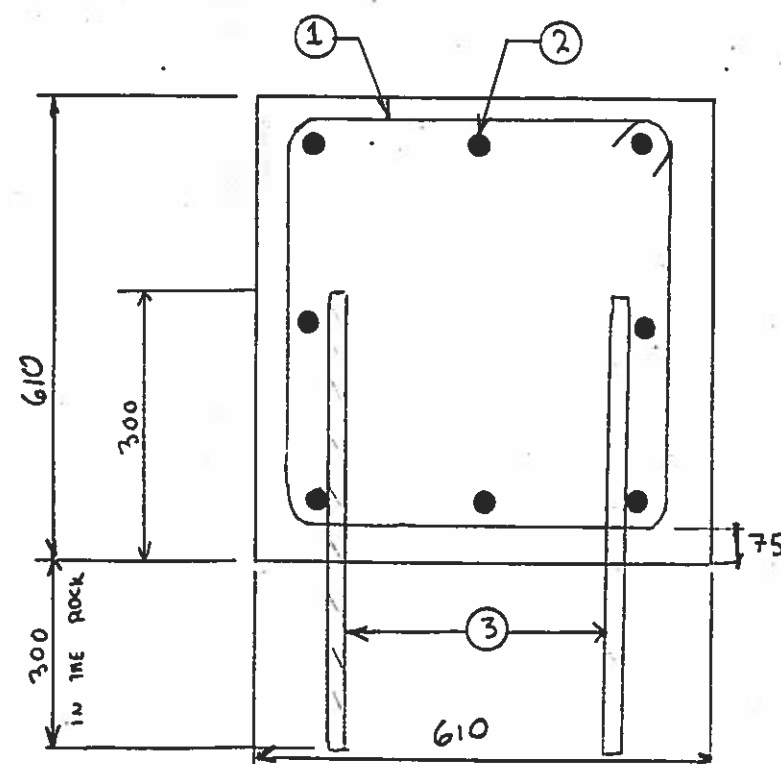
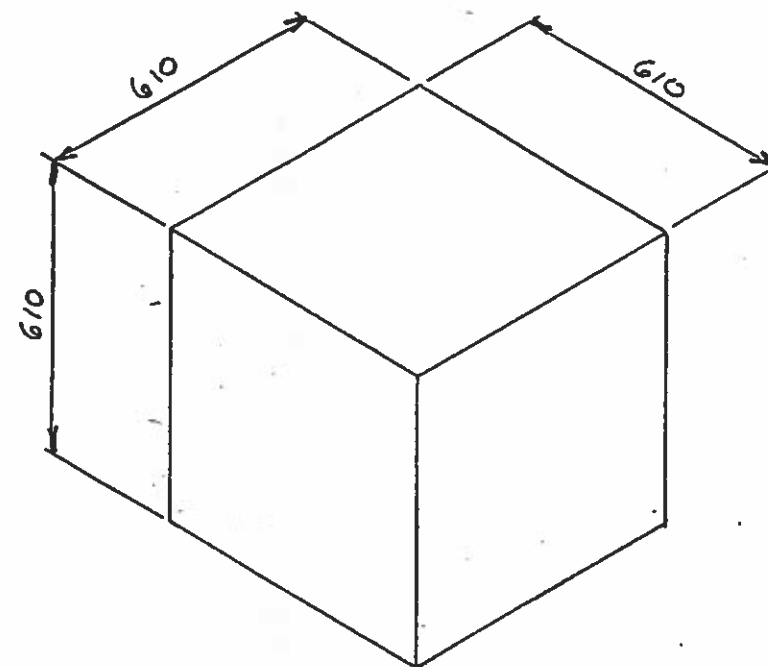
4			
3			
2			
1			
No. No.	Revision	Date	Par By
Project			
MARINE OPERATION BASE FLOATING DOCK SYSTEM TOBERMORY, ONTARIO			
Dessin			
STARTING CONCRETE BLOCK 1524 x 2780 QTY: 1			
Concu par		Date	Date
TECHNOMARINE		APRIL '97	
Dessine par		Date	Date
C. BROSSEAU		APRIL '97	
Verifie par		Date	Date
J. POIRIER		APRIL '97	
Approuve par		Date	Date
Echelle		Scale	Trace
1:30			
No. de projet			Project no.
2341			
No. de dessin			Drawing no.
2341ΔNO2			



PLAN VIEW



ELEVATION VIEW



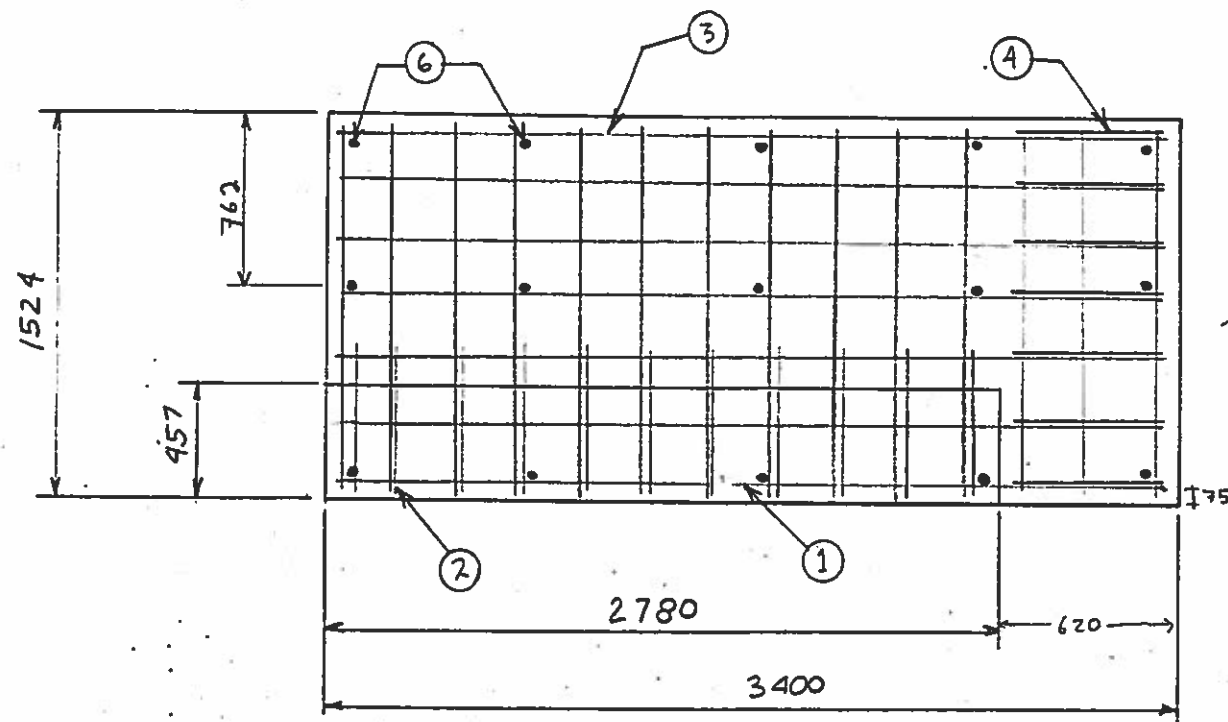
SIDE VIEW

- 1
- 2
- 3
- 4
- 5
- 6
- 7
- 8
- 9
- 10
- 11
- 12
- 13
- 14
- 15
- 16
- 17
- 18
- 19
- 20

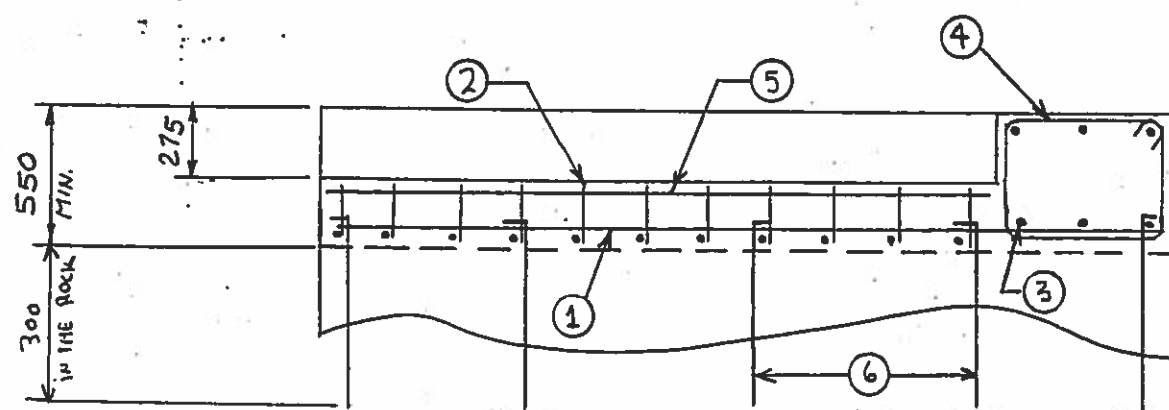
PIECE NO.	DESCRIPTION	QTE QTY
1	TIE 10M @ 230mm c/c	3
2	10M @ 230mm c/c (460)	8
3	15M (600)	4
4		
5		
6		
7		
8		
9		
10		
11		
12		
13		
14		
15		
16		
17		
18		
19		
20		

TECHNOMARINE®

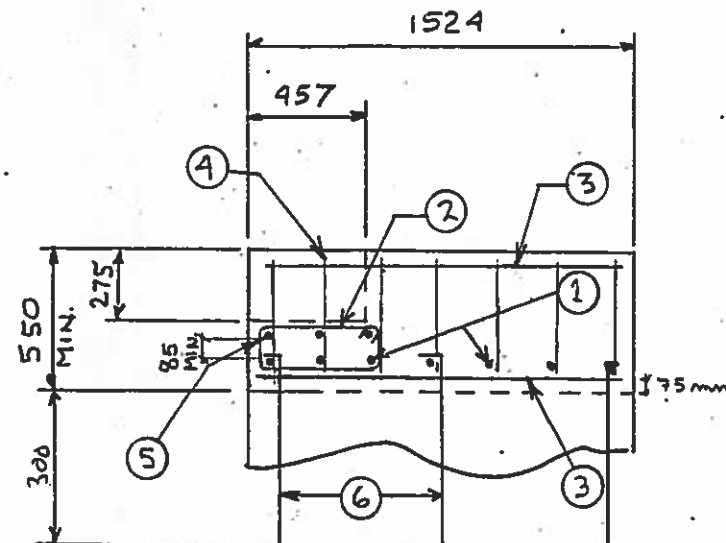
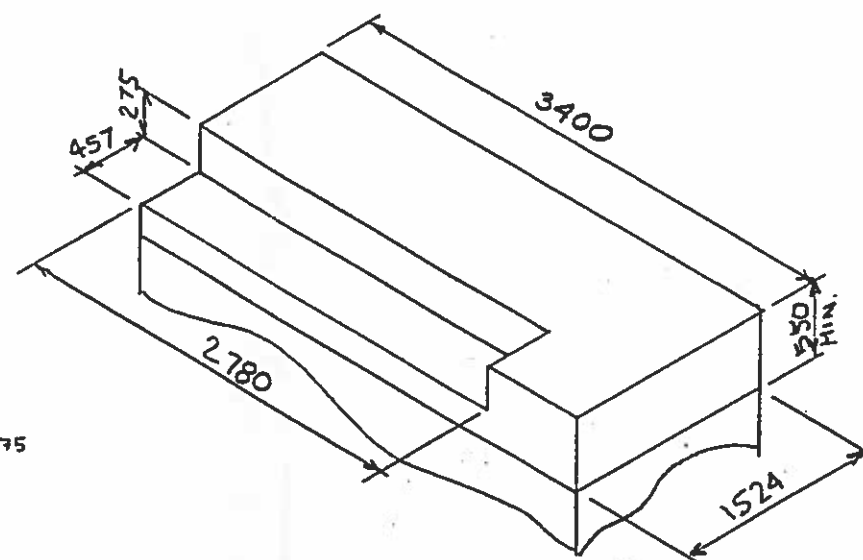
4			
3			
2			
1			
No. No.	Revision Revision	Date Date	Par By
Projet		Project	
MARINE OPERATION BASE FLOATING DOCK SYSTEM TOBERMORY, ONTARIO			
Dessin		Drawing	
BLOCK FOR STRUT CONNECTOR (HP4) QTY=1			
Concu par	Designed by	Date	Date
TECHNOMARINE		APRIL '97	
Dessine par	Drawn by	Date	Date
C. BROUSSEAU		APRIL '97	
Verifie par	Verified by	Date	Date
S. POIRIER		APRIL '97	
Approuve par	Approved by	Date	Date
Echelle	Scale	Trace	Traced
1:10			
No. de projet		Project no.	
2341			
No. de dessin		Drawing no.	
2341AN07			



PLAN VIEW



ELEVATION VIEW

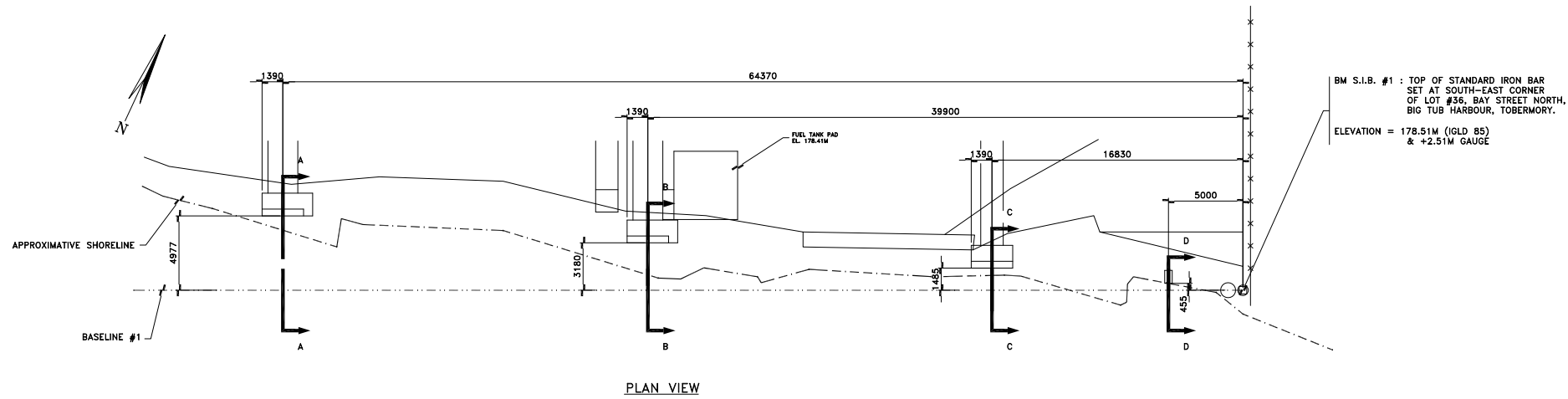


SIDE VIEW

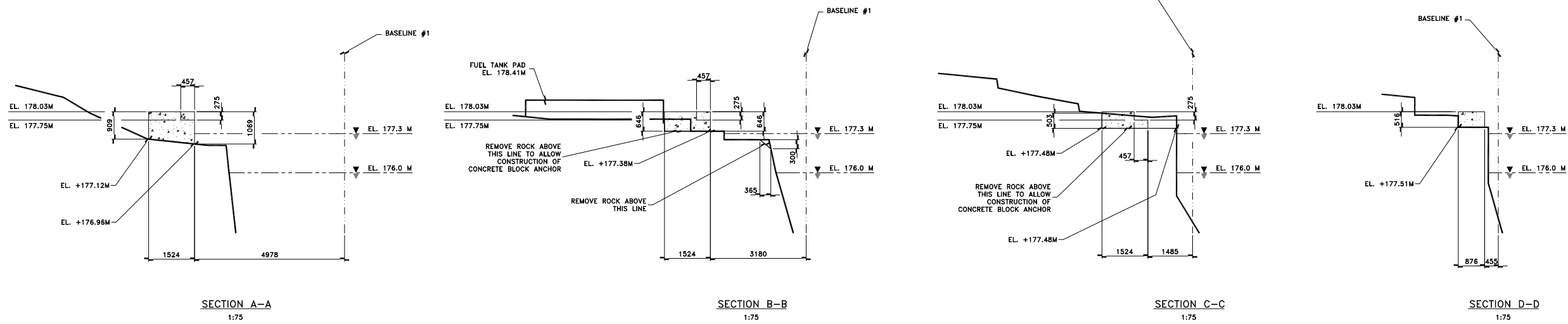
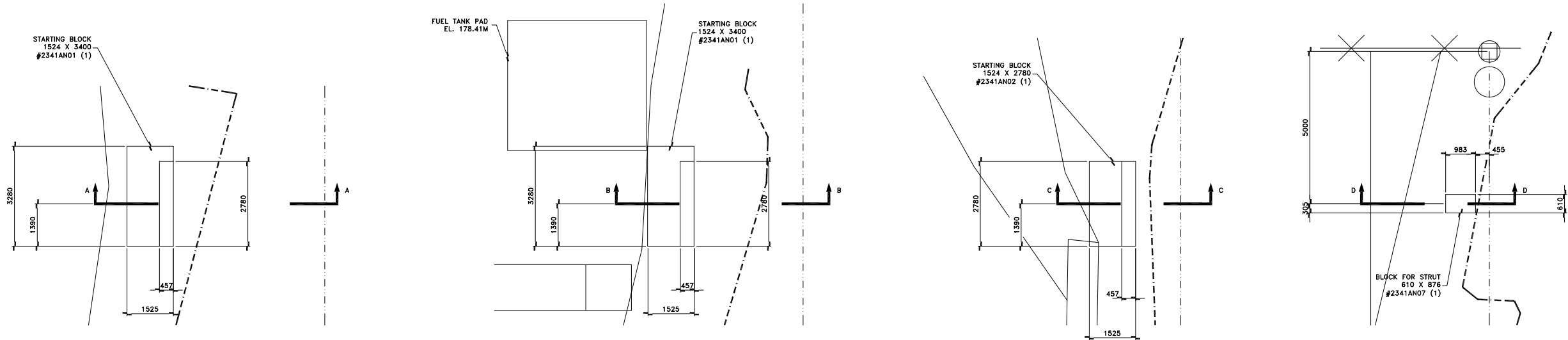
PIECE NO.	DESCRIPTION	QTE QTY
1	10M @ 190 mm c/c (3250 mm)	7
2	TIE 10M @ 250 mm c/c	11
3	10M @ 250 mm c/c (1374 mm)	17
4	TIE 10M @ 190 mm c/c	7
5	10M @ 190 mm c/c (2705 mm)	3
6	15M (400 x 25 mm)	15
7		
8		
9		
10		
11		
12		
13		
14		
15		
16		
17		
18		
19		
20		

TECHNOMARINE®

4			
3			
2			
1			
No. No.	Revision Revision	Date Date	Par By
Project		Project	
MARINE OPERATION BASE. FLOATING DOCK SYSTEM TOBERMORY, ONTARIO			
Dessin		Drawing	
STARTING CONCRETE BLOCK 1524 x 3400 QTY = 2			
Concu par	Designed by	Date	Date
TECHNOMARINE		APRIL '97	
Dessine par	Drawn by	Date	Date
C. BROUSSEAU		APRIL '97	
Verifie par	Verified by	Date	Date
S. POIRIER		APRIL '97	
Approuve par	Approved by	Date	Date
Echelle	Scale	Trace	Traced
1 : 30			
No. de projet		Project no.	
2341			
No. de dessin		Drawing no.	
2341/ANOI			



PLAN VIEW

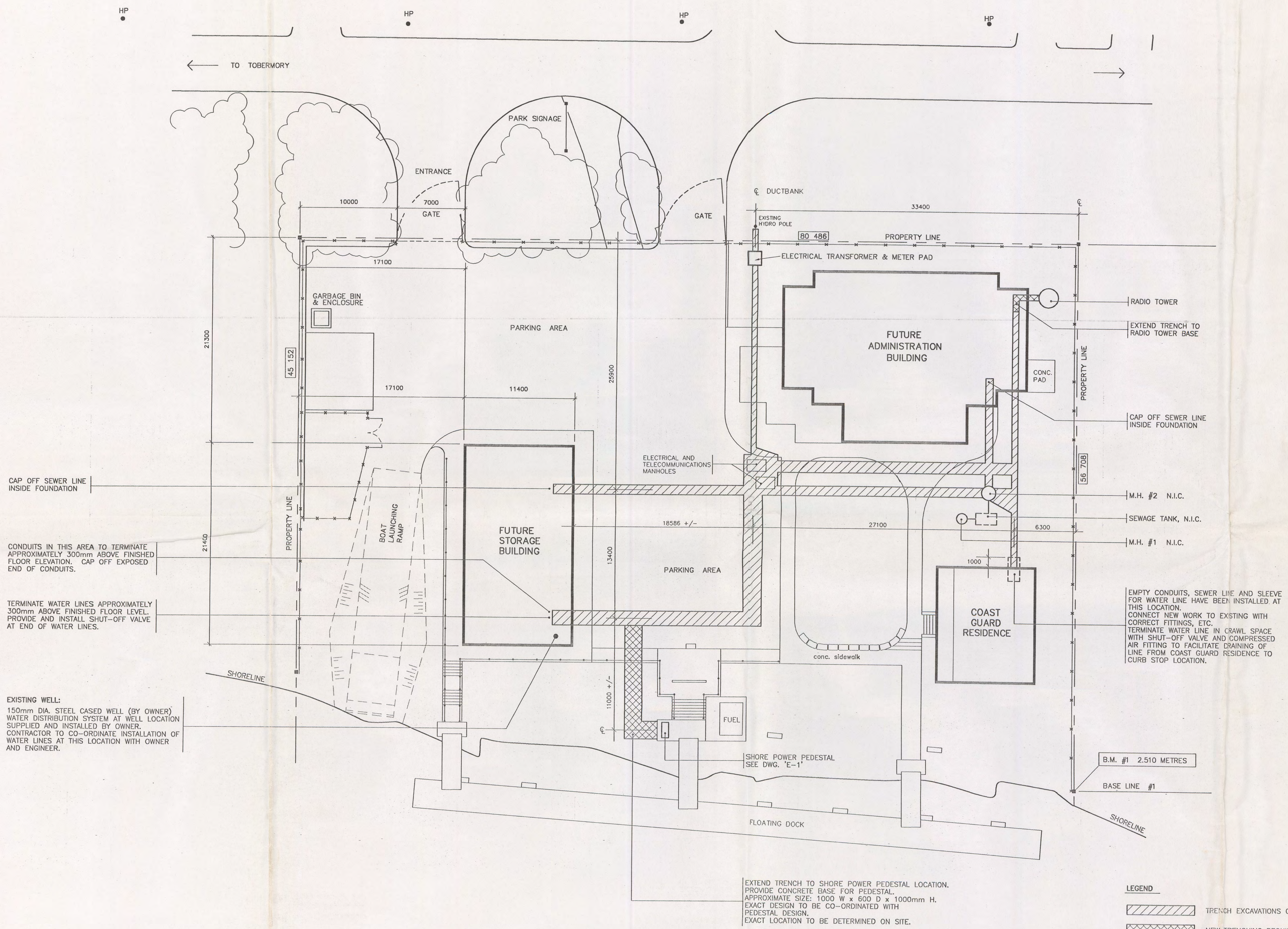


TECHNOMARINE®

No. No.	Revision Revision					Date Date	Par By		
Projet							Project		
MARINE OPERATION BASE FLOATING DOCK SYSTEM TOBERMORY, ONTARIO									
Dessin							Drawing		
STARTING CONCRETE BLOCK AND POSITION									
Concu par TECHNOMARINE					Designed by		Date APRIL, '97		Date
Dessine par C. BROUSSEAU					Drawn by		Date APRIL 15, '97		Date
Verifie par					Verified by		Date		Date
Approuve par					Approved by		Date		Date
Echelle 1:200 U/N					Scale		Trace Le:		Printed:
No. de projet 2341							Project no.		
No. de dessin 2341AN10							Drawing no.		
<div>0</div>									

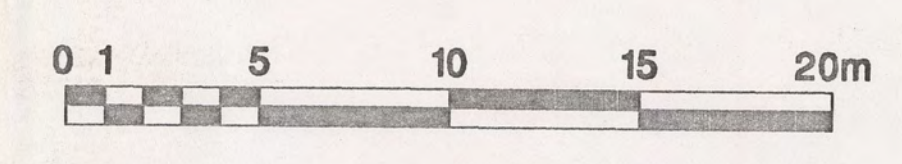
APPENDIX 3 - Existing Electrical Information.

LAYERS FROZEN
DRAWING NAME
TIME PLOTTED
DATE PLOTTED
PERSON PLOTTING
SCALE OF PLOT
VIEW PLOTTED



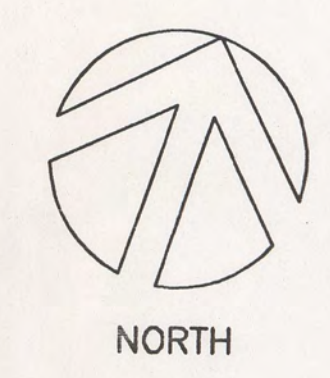
SITE SERVICES LOCATION PLAN

1 : 200



- LEGEND**
- TRENCH EXCAVATIONS COMPLETED
 - NEW TRENCHING REQUIRED

- NOTES:**
- CONTRACTOR TO VERIFY LOCATIONS AND CONDITIONS OF ALL TRENCHES. CONTRACTOR TO INCLUDE FOR ANY ADDITIONAL EXCAVATION OF ROCK OR OVERBURDEN TO PREPARE EXISTING TRENCHES FOR INSTALLATION OF SERVICES AND TO EXTEND TRENCHES TO THE RADIO TOWER AND SHORE POWER PEDESTAL LOCATION.
 - SEE SPECIFICATIONS, APPENDIX 'A', FOR ALL OWNER SUPPLIED ITEMS.



- LEGEND**
- Existing tree line
 - Proposed tree line
 - Existing trees
 - Existing hydro pole
 - Existing fence line
 - Property Line

NOTE:

ALL DIMENSIONS, SITE AND GRADING CONDITIONS AND ELEVATIONS ARE TO BE VERIFIED ON SITE. FOR ALL SITE AND UNDERGROUND SERVICES, SEE SITE SERVICES DRAWINGS: "E-1", "E-2", "E-3".

LIST OF DRAWINGS

E-1A	SITE SERVICES LOCATION PLAN
E-1	SITE SERVICES, WATER, SEWER, ELECTRICAL
E-2	SECTIONS
E-3	DETAILS

1	APRIL 16/97	ISSUED FOR TENDER		
No.	Date	Description	Drawn by	Approved
			Dessiné par	Approuvé

Revision / Révision		
A	Detail number	A Numéro de détail
B	Sheet number	B Sur feuille numéro

Client Acceptance / Acceptation du client		
Signature	Date	
File No.	Nº de dossier	

Public Works and Government Services Canada	Travaux publics et Services gouvernementaux Canada
Architecture and Engineering Services for Parks Canada	Services d'architecture et de génie pour Parcs Canada

Canada

DATE PRINTED
MAY 15 1997

Project title / Titre du projet
**MARINE OPERATIONS BASE
PARKS CANADA
CANADIAN COAST GUARD
BRUCE PENINSULA NATIONAL PARK
BIG TUB HARBOUR TOBERMORY, ONTARIO**

Drawing title / Titre du dessin
**SITE SERVICES
LOCATION PLAN**

Scale / Echelle AS SHOWN	
Drawn by / Dessiné par MICHAEL FIDLER	Date APRIL 1997
Designed by / Conçu par ROBERT CAMPBELL	Date APRIL 1997
Approved by / Approuvé par [Signature]	Date Apr 24/97
Checked by / Vérifié par [Signature]	Date Apr 24/97

Project No. / Nº du projet 52274	Asset No. / Nº du bien	Sheet No. / Feuille Nº E-1A
Drawing reference No. / Numéro de référence du dessin NOBP 97/R12		

LAYERS FROZEN
DRAWING NOTES

DRAWING NAME

TIME PLOTTED

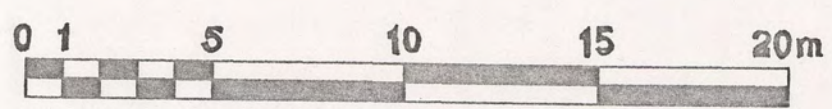
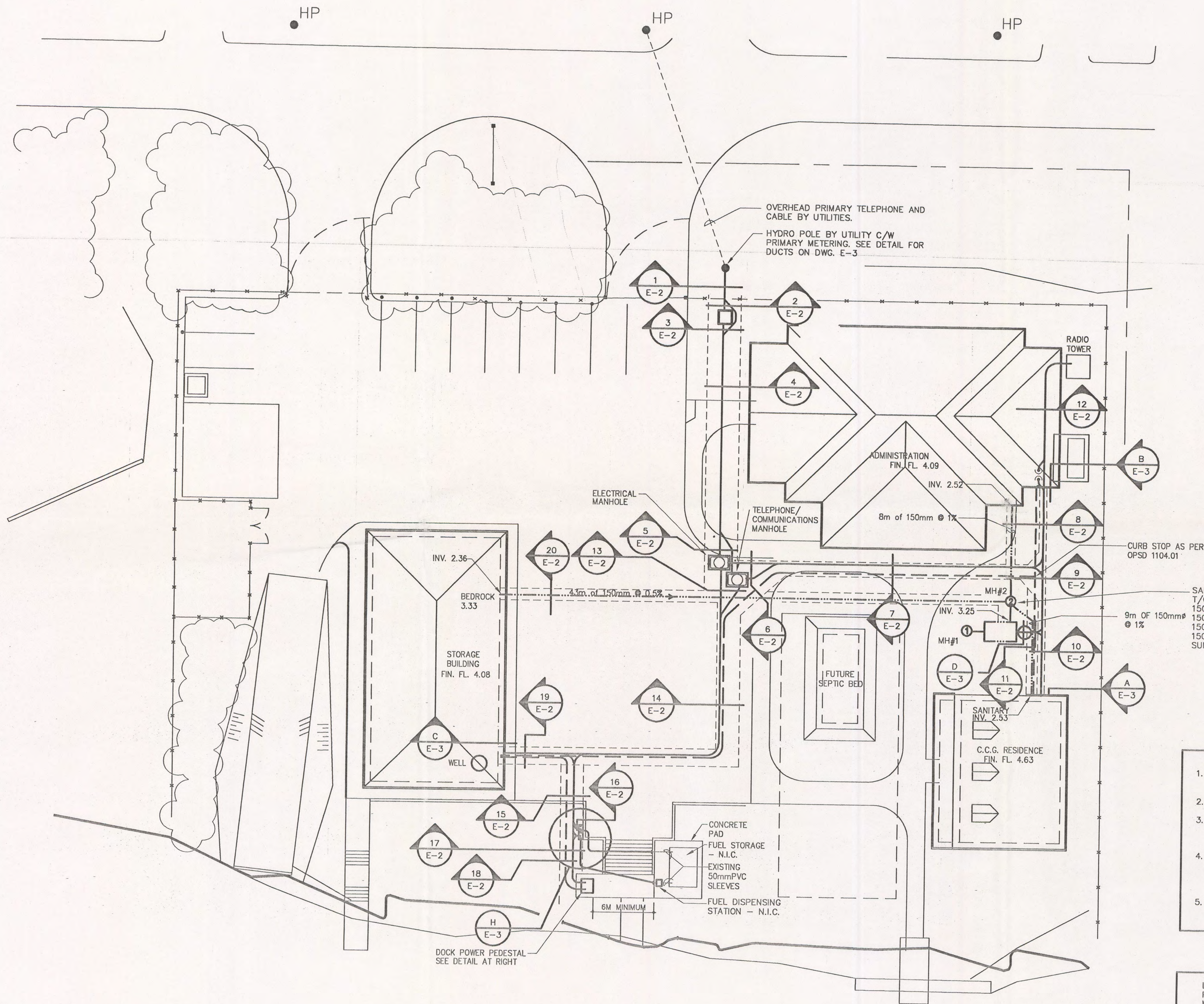
DATE PLOTTED

PERSON PLOTTING

SCALE OF PLOT

VIEW PLOTTED

M:\1997\97302\7302E1A 4-15-97 10:39:48 am EST



- PRIMARY DUCTS
- SECONDARY DUCTS TO MANHOLE (POWER)
- STORAGE POWER
- DOCK POWER
- ADMIN. POWER
- C.C.G. POWER
- SEWAGE SYSTEM POWER
- DOCK POWER
- INCOMING COMMUNICATION
- STORAGE COMMUNICATION
- ADMIN. COMMUNICATION
- C.C.G. COMMUNICATION
- ADMIN. RADIO TOWER
- SEWAGE COMMUNICATION
- C.C.G. & ADMIN. COMMUNICATION
- DOCK COMMUNICATION
- PUMPS TEMP. POWER
- DOCK COMMUNICATION

DUCT #	FROM	TO	PURPOSE
POWER CONDUITS			
1	HYDRO POLE	PAD MT. TRANS	U/G PRIMARY
2	HYDRO POLE	PAD MT. TRANS	SPARE
3	PAD MOUNT TRANS.	ELEC. MANHOLE	STORAGE POWER
4	PAD MOUNT TRANS.	ELEC. MANHOLE	DOCK POWER *
5	PAD MOUNT TRANS.	ELEC. MANHOLE	ADMIN. BLDG. POWER
6	PAD MOUNT TRANS.	ELEC. MANHOLE	CAN. COAST GUARD POWER *
7	PAD MOUNT TRANS.	ELEC. MANHOLE	SPARE
8	PAD MOUNT TRANS.	ELEC. MANHOLE	SPARE
9	ELEC. MANHOLE	STORAGE	POWER
10	ELEC. MANHOLE	STORAGE	SPARE
11	ELEC. MANHOLE	DOCK	POWER *
12	ELEC. MANHOLE	DOCK	SPARE
13	ELEC. MANHOLE	ADMINISTRATION	POWER
14	ELEC. MANHOLE	ADMINISTRATION	SPARE
15	ELEC. MANHOLE	CAN. COAST GUARD	POWER *
16	ELEC. MANHOLE	CAN. COAST GUARD	SPARE
17	ADMIN. BLDG.	SEWAGE STATION	FUTURE POWER
18	CAN. COAST GUARD	SEWAGE STATION	POWER
19	STORAGE	DOCK	FUTURE POWER PUMPS
COMMUNICATION CONDUITS			
20	HYDRO POLE	COMM. MANHOLE	TELE & CABLE
21	HYDRO POLE	COMM. MANHOLE	SPARE
22	COMM. MANHOLE	STORAGE	TELE & CABLE
23	COMM. MANHOLE	STORAGE	SPARE
24	COMM. MANHOLE	ADMIN.	TELE & CABLE
25	COMM. MANHOLE	ADMIN.	SPARE
26	COMM. MANHOLE	CAN. COAST GUARD	TELE & CABLE
27	COMM. MANHOLE	CAN. COAST GUARD	SPARE
28	RADIO TOWER	CAN. COAST GUARD	RADIO COMM.
29	RADIO TOWER	ADMIN. BLDG.	FUTURE RADIO COMM.
30	ADMIN. BLDG.	SEWAGE	FUTURE ALARMS
31	CAN. COAST GUARD	SEWAGE	ALARMS
32	CAN. COAST GUARD	ADMIN.	SPARE
33	PUMPS	STORAGE	ALARMS/FUTURE GAS.
34	PUMPS	COMM. MANHOLE	ALARMS/GAS PUMPS
35	STORAGE	COMM. MANHOLE	ALARMS/WELL PUMP
POWER CONDUIT			
36	DOCK	PUMPS	POWER TEMPORARY Ⓢ
37	DOCK	STORAGE	TELE. & CABLE

DUCT ROUTING IDENTIFICATION

- AT CROSSINGS MOVE WATERLINE TO ALLOW FOR ELECTRICAL TO PASS ABOVE
- CONCRETE TO BE MIN. 25MPA STRENGTH.
- ALL CONDUIT SHALL HAVE A 4.5mm POLYPROPYLENE FISH ROPE INSTALLED. WIRE OR TWINE NOT ACCEPTABLE.
- ONLY APPROVED PLASTIC SUPPORTS AND SPACERS SHALL BE USED FOR THE DUCTS. BRICKS OR BLOCKS OF WOOD ARE NOT ACCEPTABLE.
- PROVIDE DANGER IDENTIFICATION TAPE 150mm ABOVE ALL DUCTBANKS.

--- WATERMAIN-32mm P.E. SERIES 160
--- SANITARY SEWER-150mm SDR35-PVC
--- ELECTRICAL DUCTBANK

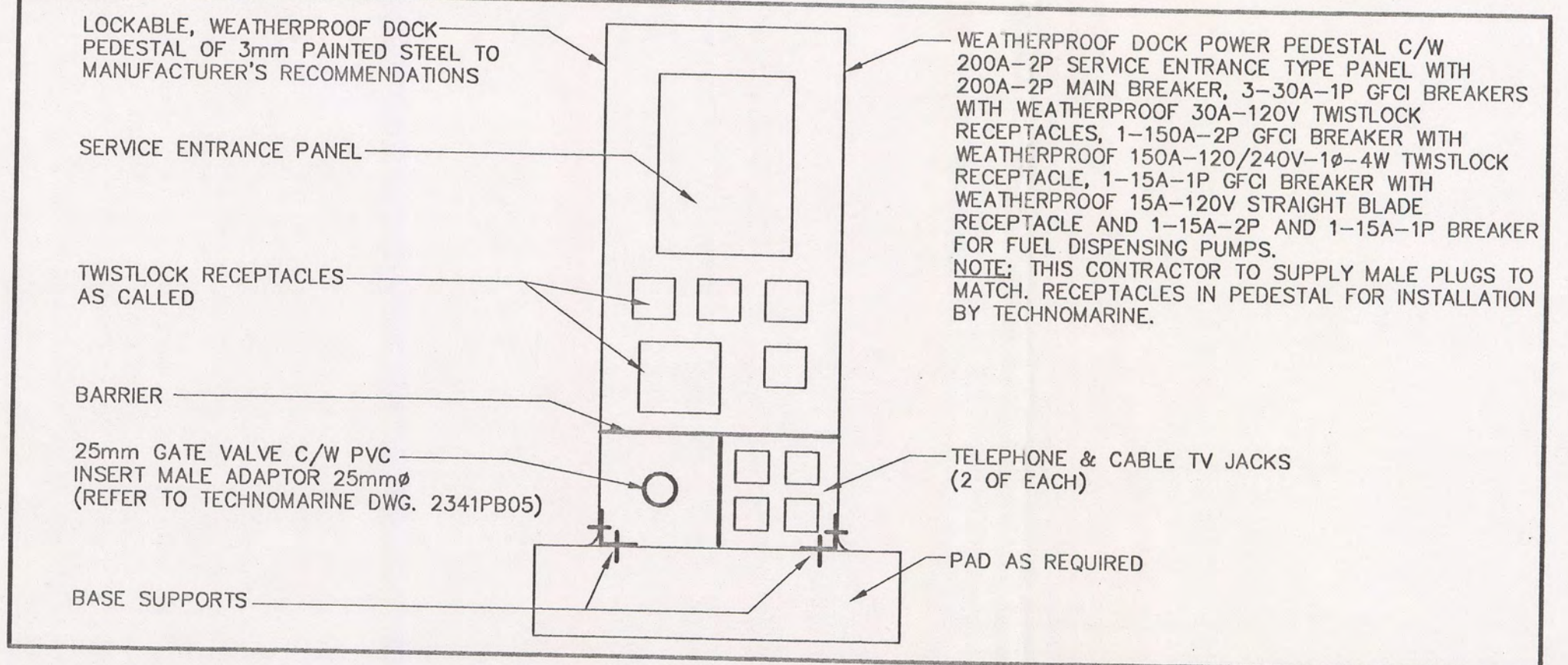
* SITE SERVICE CONTRACTOR TO PROVIDE 3c-250MCM TECK CABLE FROM TRANSFORMER TO BUILDING OR DOCK PEDESTAL C/W TERMINATIONS AT BUILDING OR DOCK PEDESTAL.

Ⓢ SITE SERVICE CONTRACTOR TO PROVIDE 2c#12 & 1#14GD FROM J.B. TO DISPENSING STATION THROUGH CONDUIT AND PROVIDE 'E' FITTING AT JUNCTION BOX. RUN 2c#12 TECK FROM JUNCTION BOX TO DOCK PEDESTAL.

PUMPS IN MH#1 & MH#2 BY OTHERS

NOTES

LEGEND



DOCK PEDESTAL

2	APRIL 16/97	ISSUED FOR TENDER		
1	APRIL 7/97	OWNER'S REVIEW		
No.	Date	Description	Drawn by	Approved
			Dessiné par	Approuvé

Revision / Révision		
A	A Detail number	A Numéro de détail
B	B Sheet number	B Sur feuille numéro
Linear dimensions in millimeters / Dimensions linéaires en millimètres		
Client Acceptance / Acceptation du client		
Signature		Date
File No. / N° de dossier		

Public Works and Government Services Canada / Travaux publics et Services gouvernementaux Canada

Architecture and Engineering Services for Parks Canada / Services d'architecture et de génie pour Parcs Canada

Canada

The THOMPSON ROSEMOUNT Group

1345 ROSEMOUNT AVE., CORNWALL, ONT. L6A 4K5
TEL: 613-933-5602
FAX: 613-936-0335
EMAIL: mail@trg.ca
WEBSITE: www.trg.ca

Project title / Titre du projet
**MARINE OPERATIONS BASE
PARKS CANADA
CANADIAN COAST GUARD
BRUCE PENINSULA NATIONAL PARK
BIG TUB HARBOUR TOBERMORY, ONTARIO**

Drawing title / Titre du dessin
**SITE SERVICES - WATER,
SEWER AND ELECTRICAL**

Scale / Echelle	1:200
Drawn by / Dessiné par	SL/JLK
Date	APRIL/97
Designed by / Conçu par	G. LANGSTAFF, J. WITHERSPOON
Date	APRIL/97
Approved by / Approuvé par	G. LANGSTAFF
Date	APR 29/97
Checked by / Vérifié par	G. LANGSTAFF

Project No. / N° du projet	Asset No. / N° du bien	Sheet No. / Feuille N°
52274		E-1
Drawing reference No. / Numéro de référence du dessin		
NOBP 97/R12		

LAYERS: FROZEN
DRAWING NOTES

DRAWING NAME

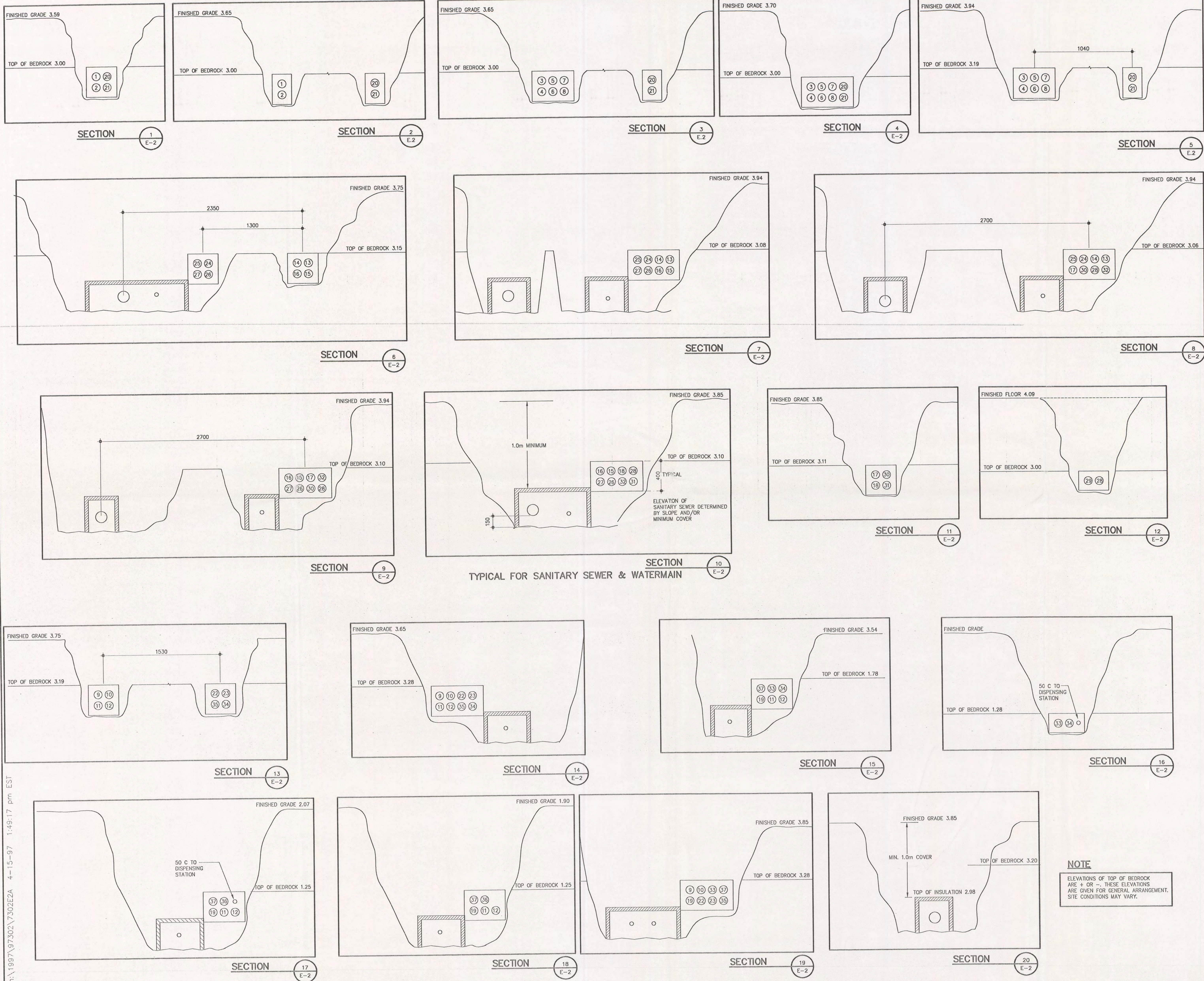
TIME PLOTTED

DATE PLOTTED

PERSON PLOTTING

SCALE OF PLOT

VIEW PLOTTED



2	APRIL 16/97	ISSUED FOR TENDER		
1	APRIL 7/97	OWNER'S REVIEW		
No.	Date	Description	Drawn by Dessiné par	Approved Approuvé

Revision / Révision

A	Detail number B	Sheet number B	A	Numéro de détail B	Sur feuille numéro
---	--------------------	-------------------	---	-----------------------	--------------------

Linear dimensions in millimeters
Dimensions linéaires en millimètres

Client Acceptance / Acceptation du client
Signature _____ Date _____
File No. / N° de dossier _____

Public Works and Government Services Canada
Travaux publics et Services gouvernementaux Canada
Architecture and Engineering Services for Parks Canada
Services d'architecture et de génie pour Parcs Canada

Canada

The THOMPSON ROSEMOUNT Group

1345 ROSEMOUNT AVE.,
CORNWALL, ONT.
TEL: 613-933-5602
FAX: 613-936-0335
EMAIL: mail@trg.ca
WEBSITE: www.trg.ca

Project title / Titre du projet
**MARINE OPERATIONS BASE
PARKS CANADA
CANADIAN COAST GUARD
BRUCE PENINSULA NATIONAL PARK
BIG TUB HARBOUR TOBERMORY, ONTARIO**

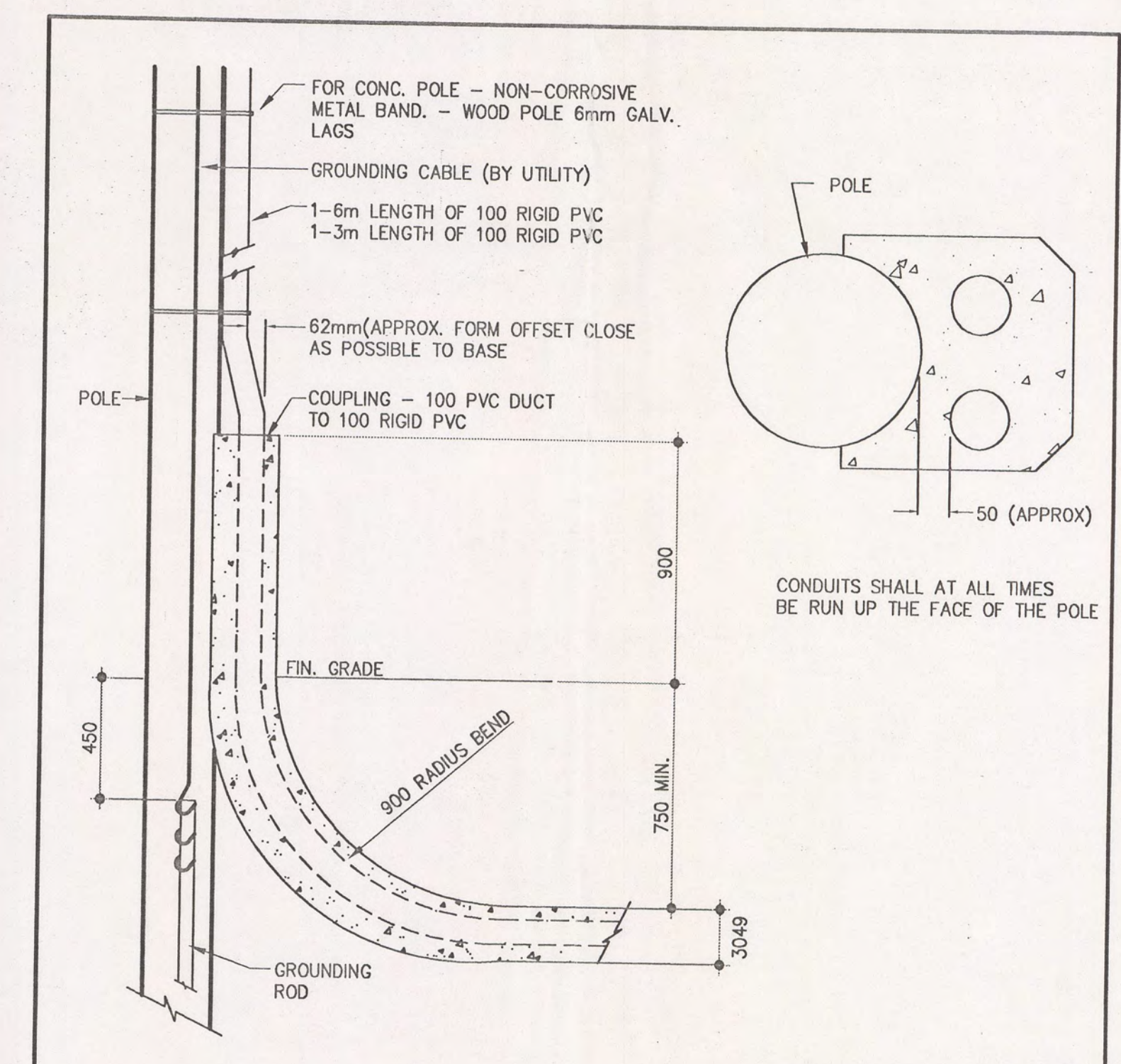
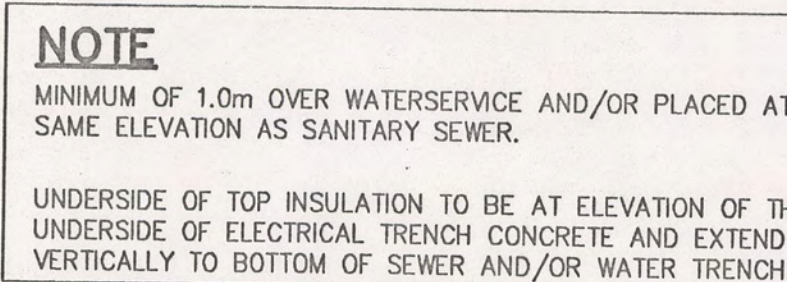
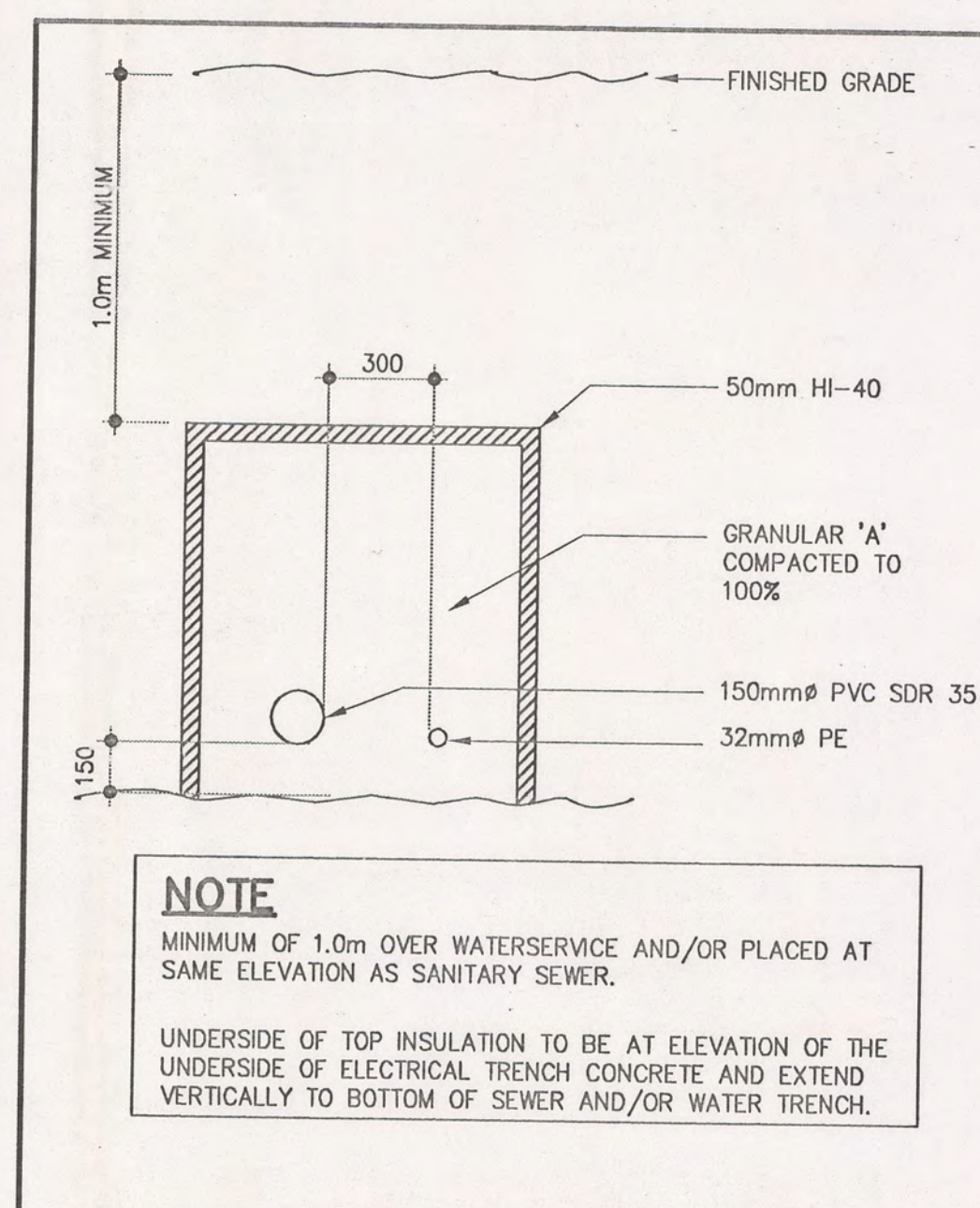
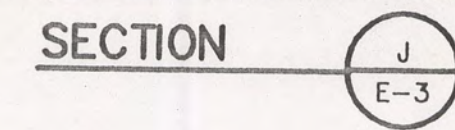
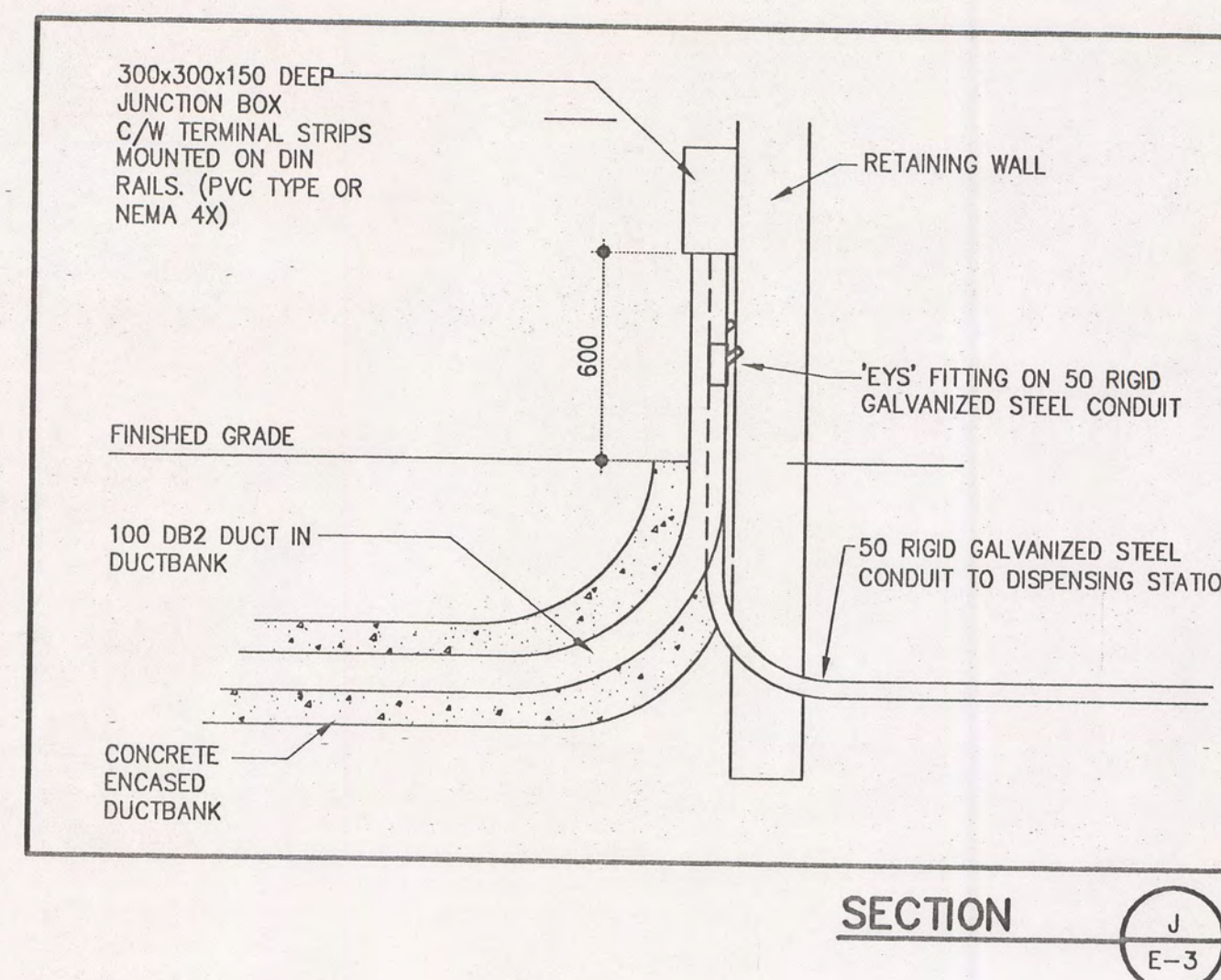
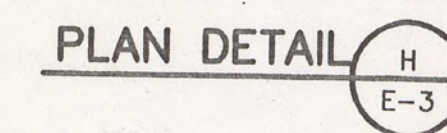
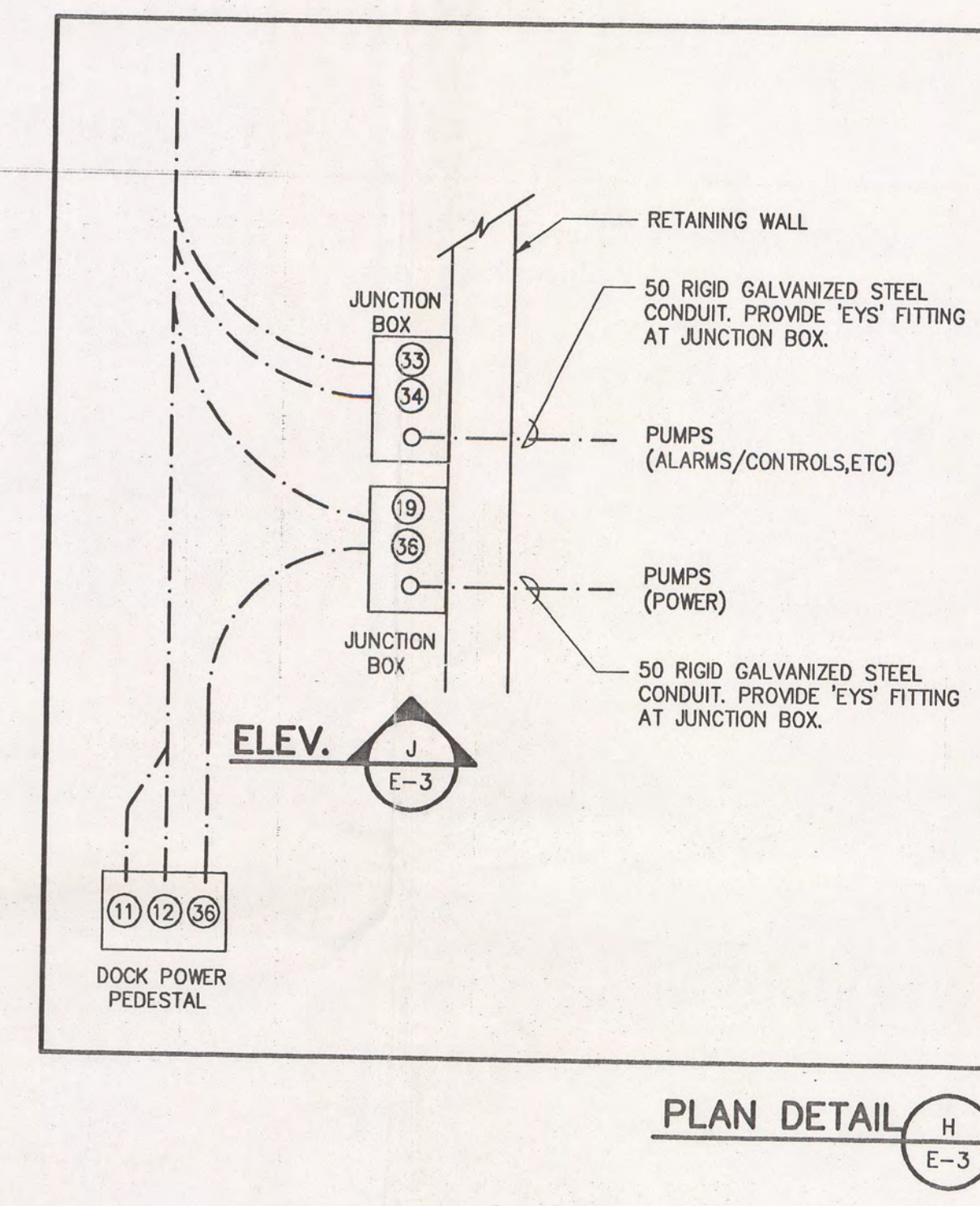
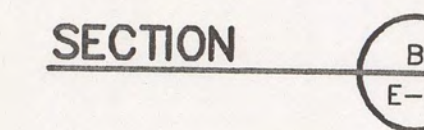
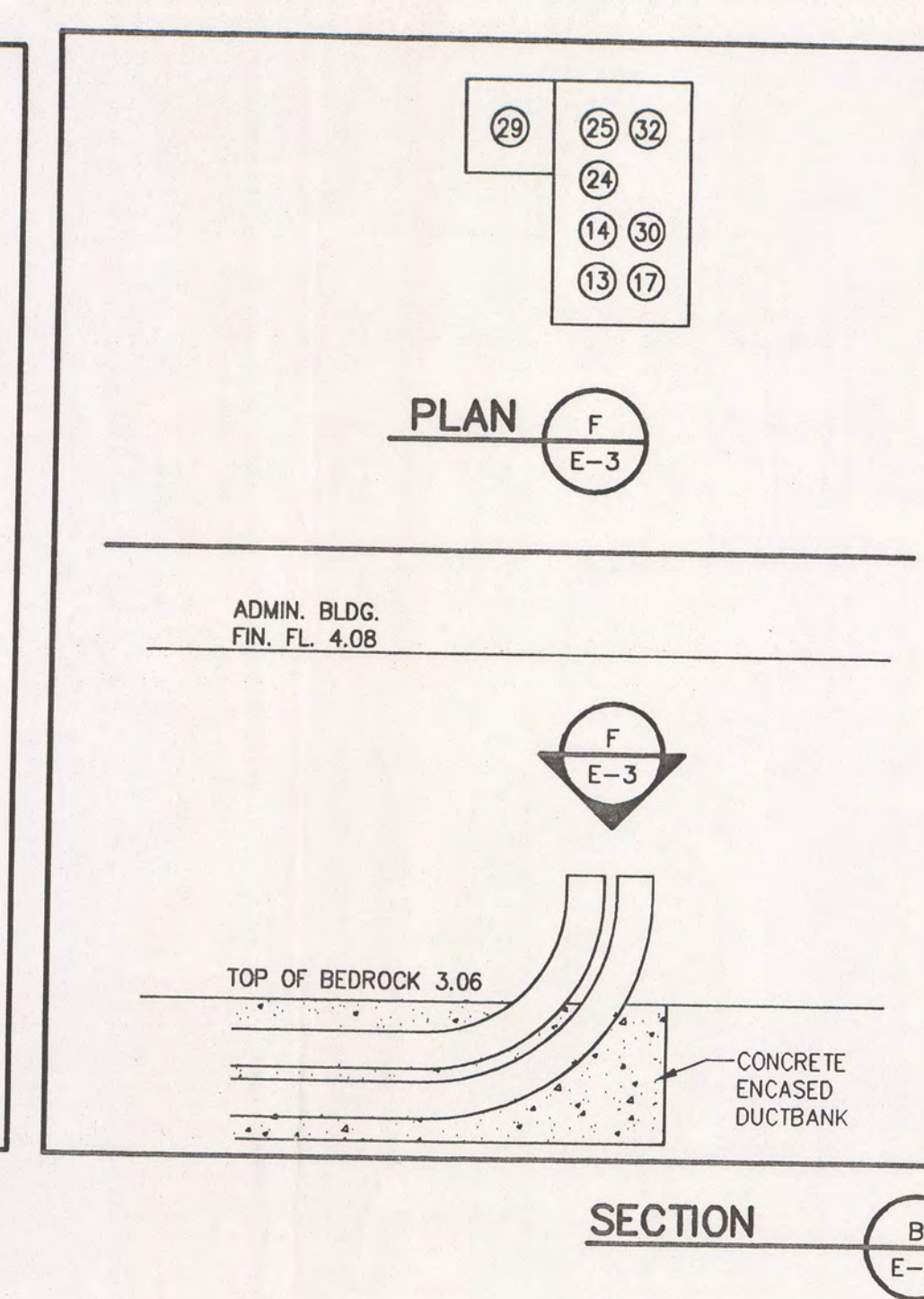
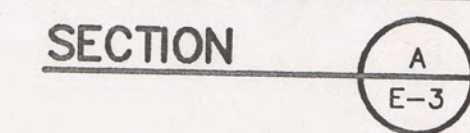
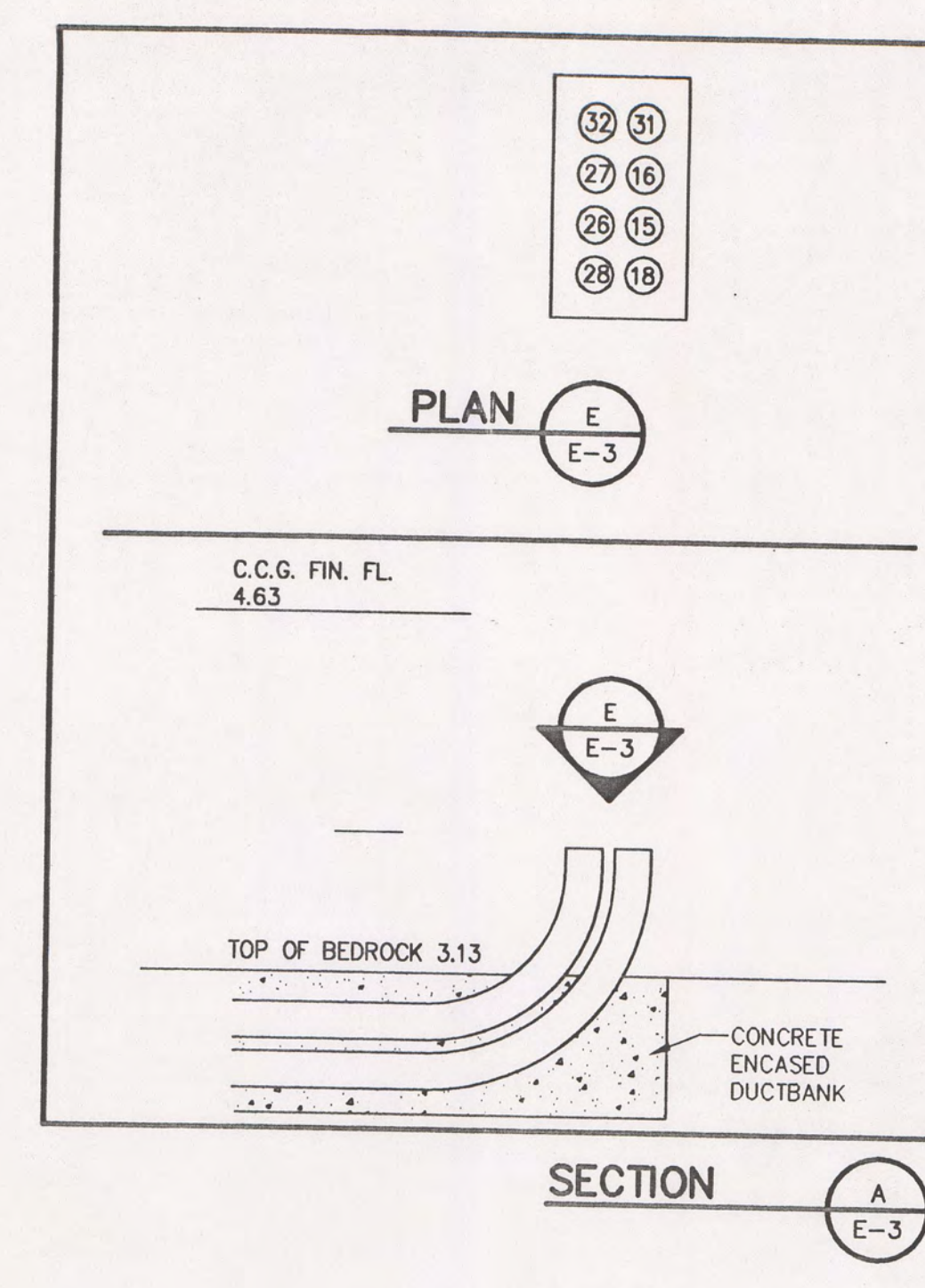
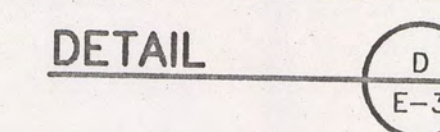
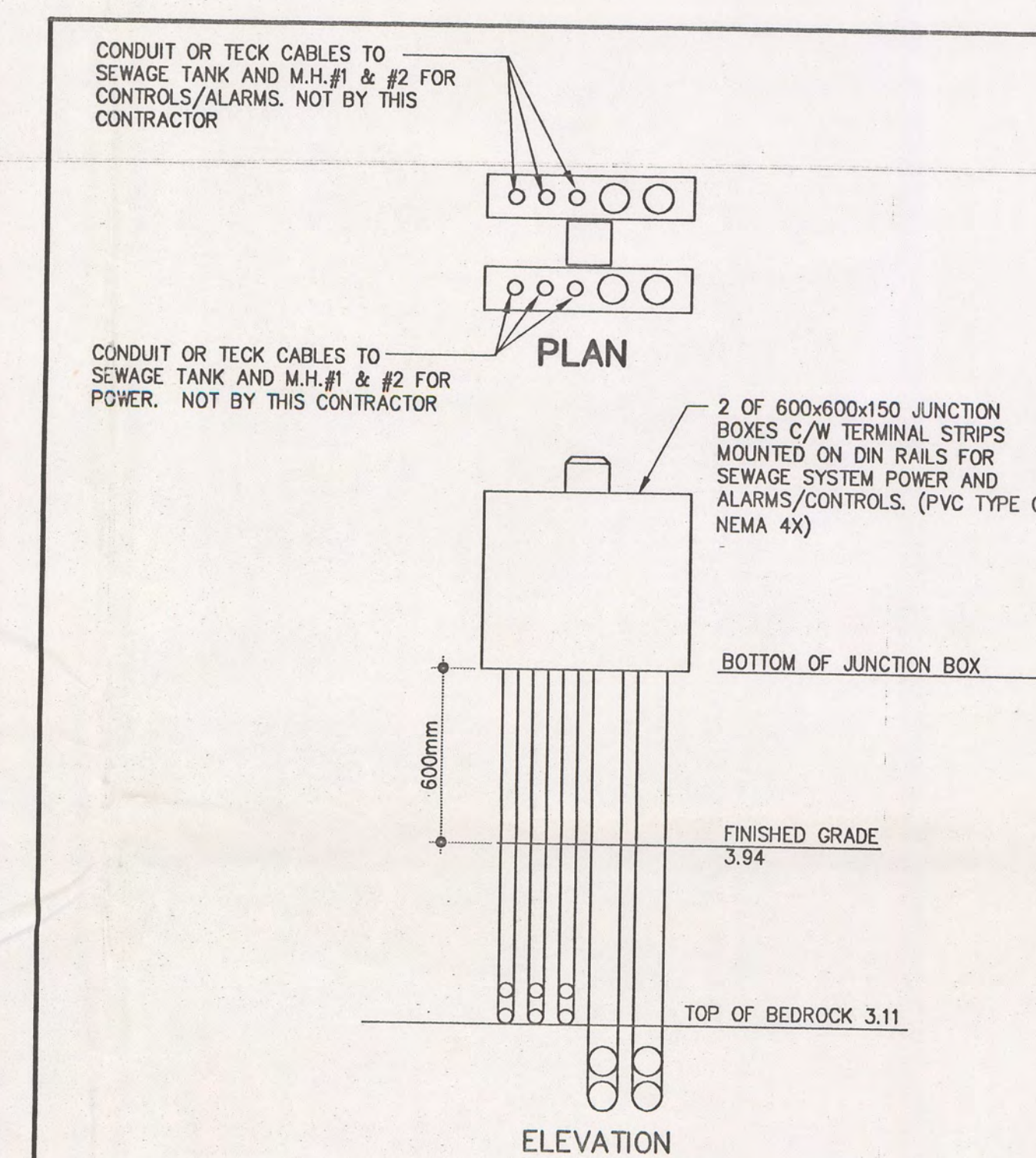
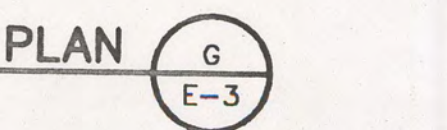
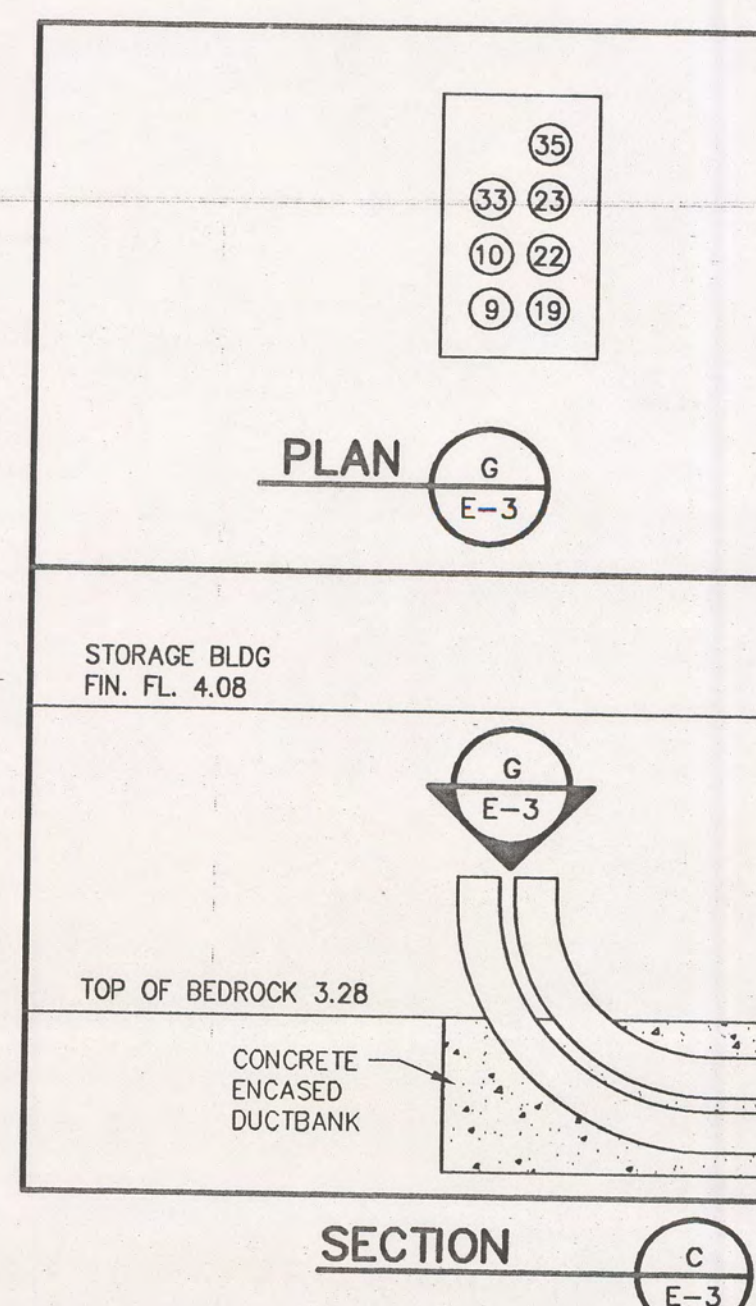
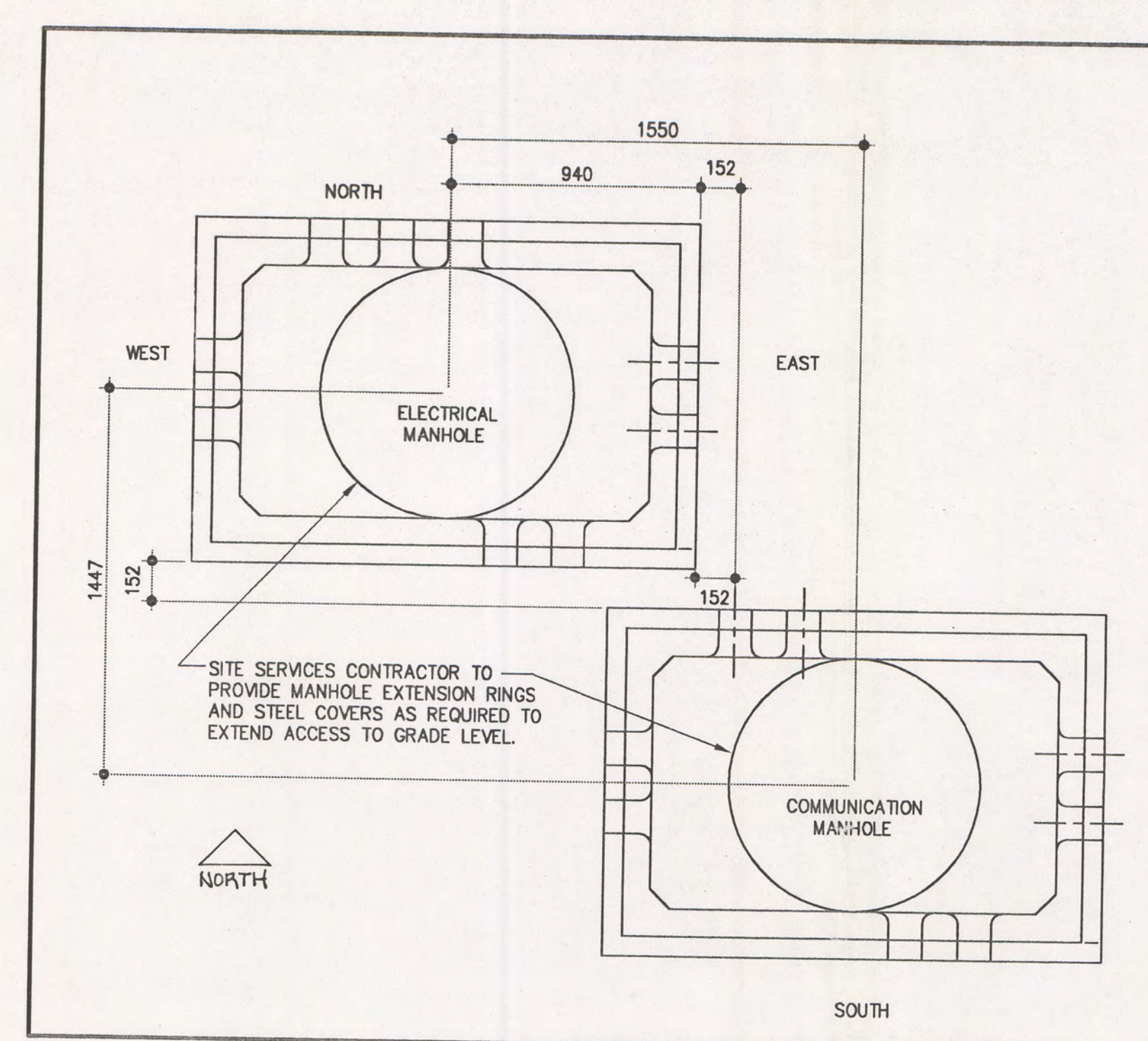
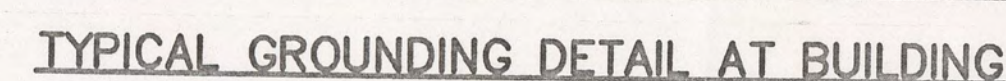
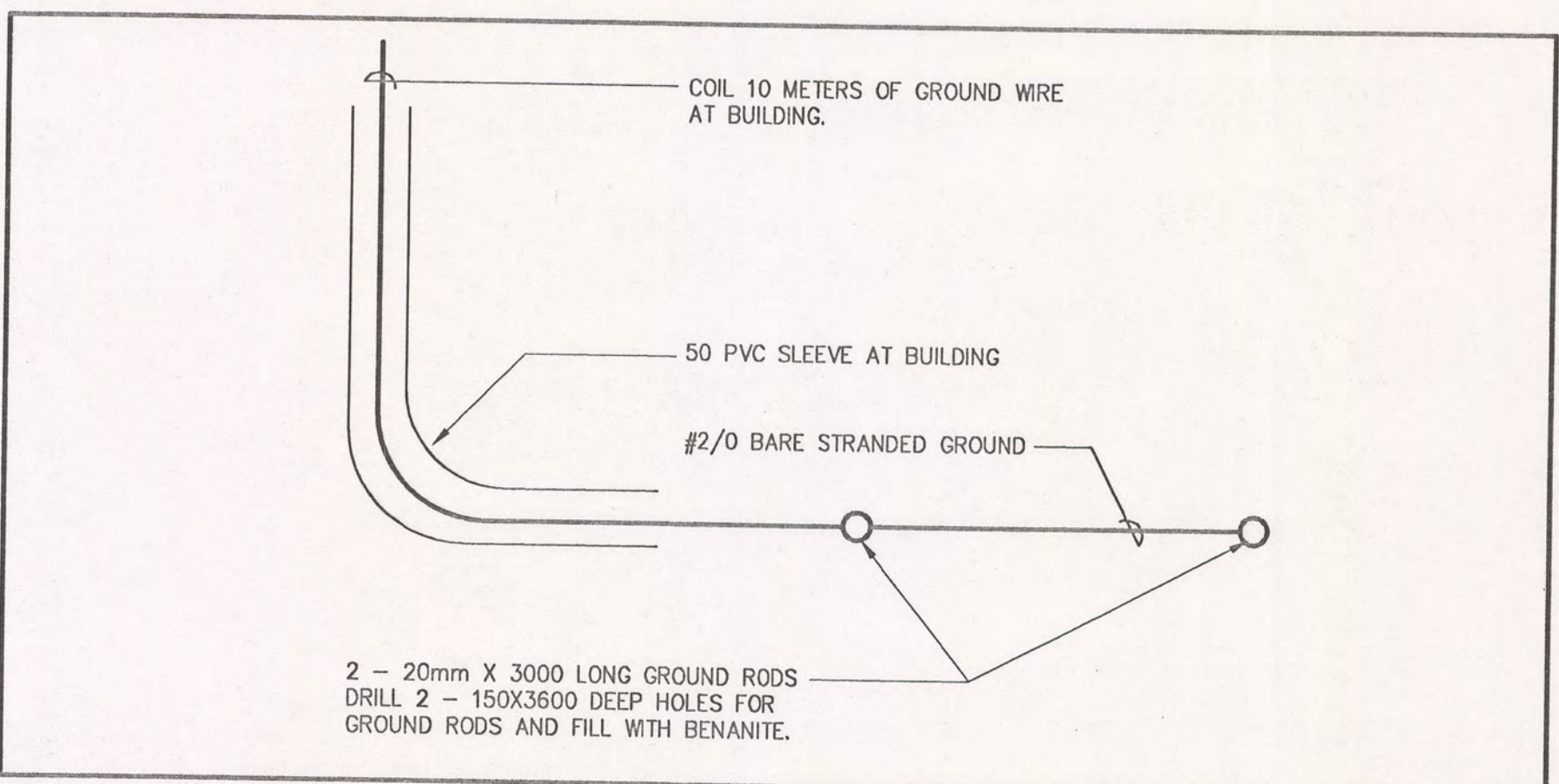
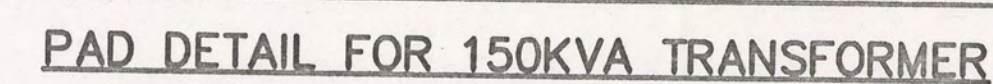
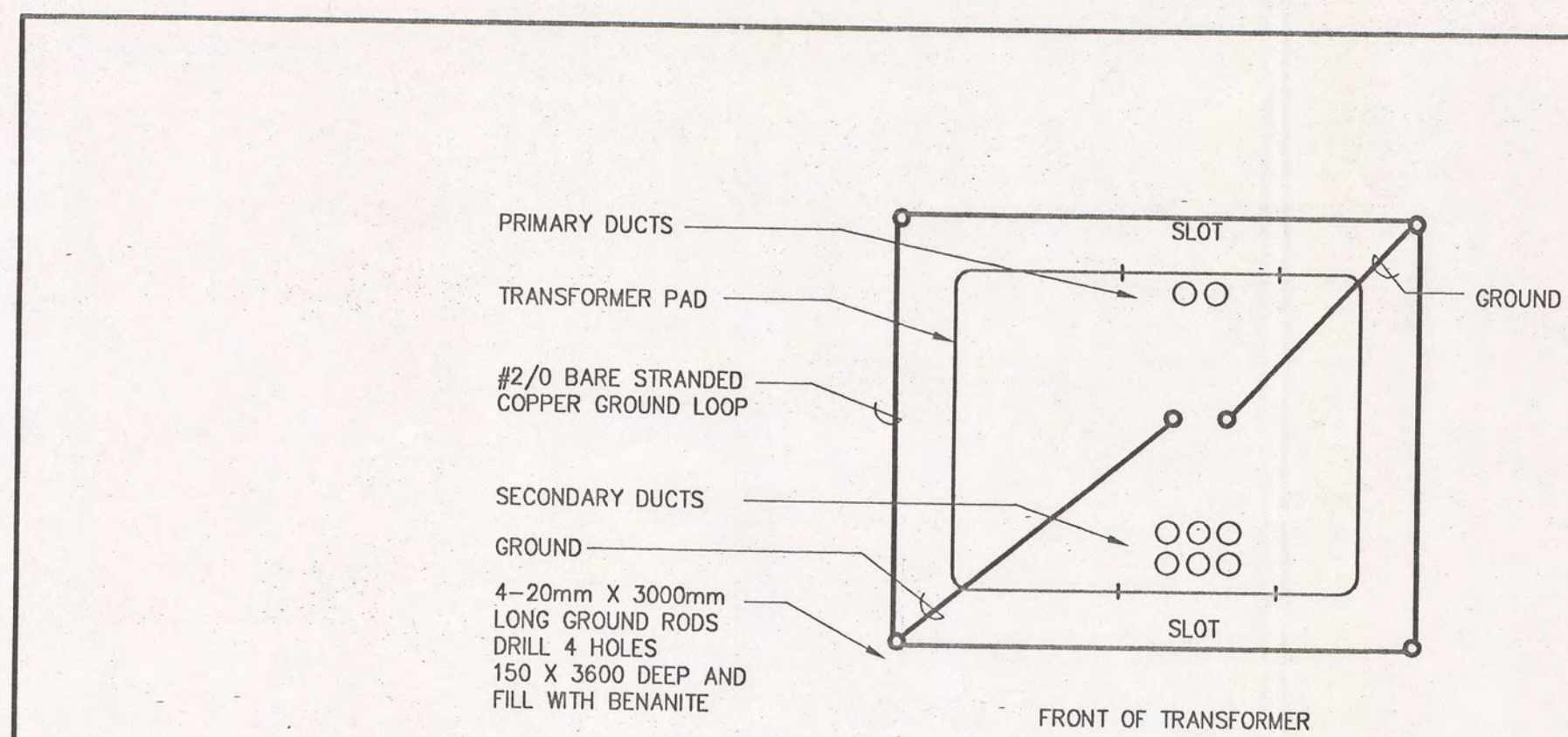
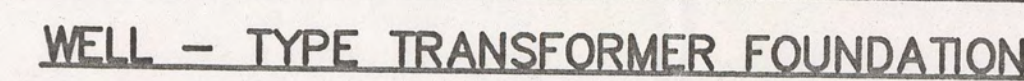
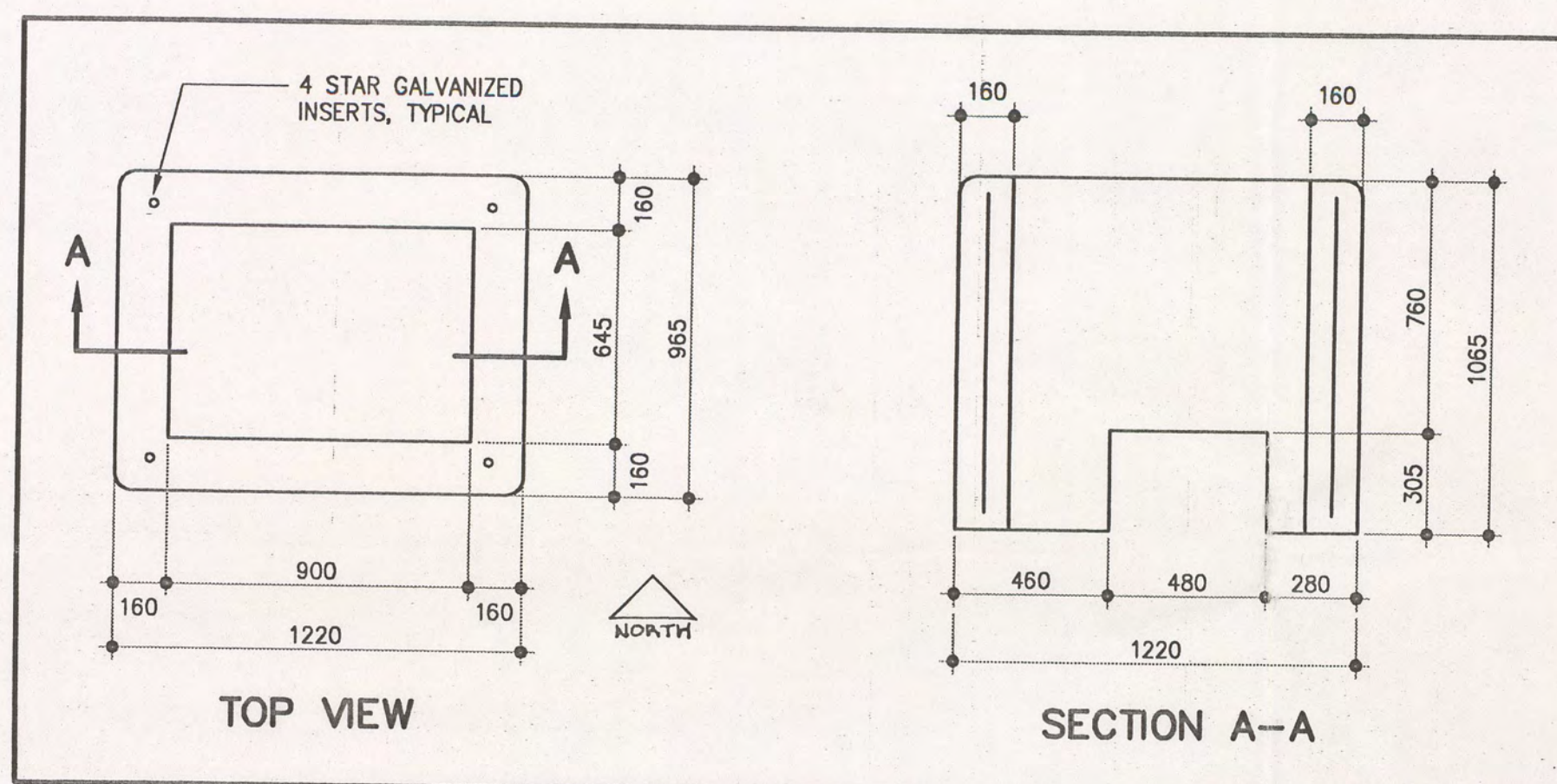
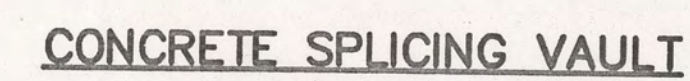
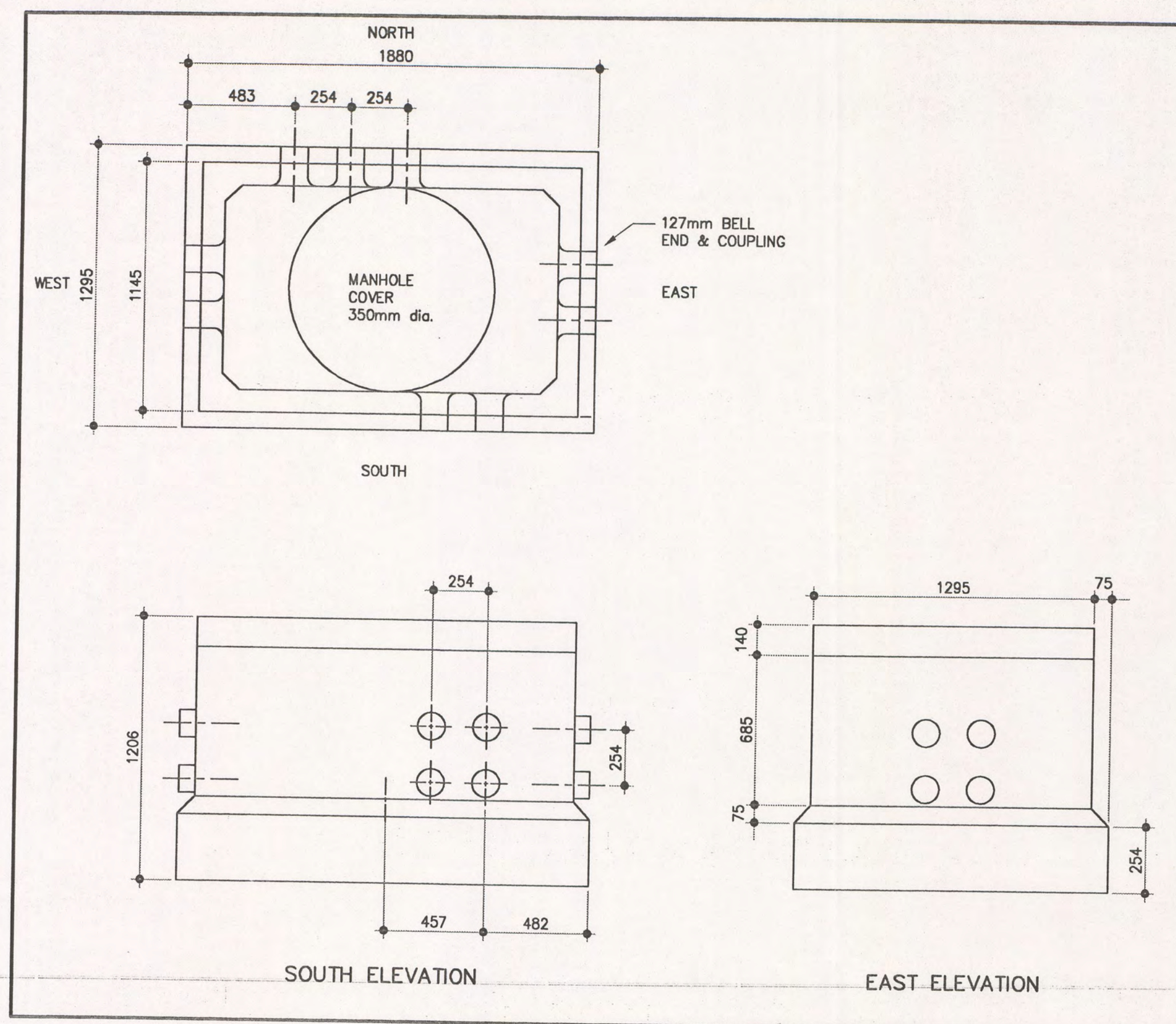
Drawing title / Titre du dessin


SECTIONS

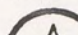
Scale / Echelle

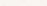
Drawn by / Dessiné par SL/JLK	Date APRIL/97
Designed by / Conçu par G. LANGSTAFF, J. WITHERSPOON	Date APRIL/97
Approved by / Approuvé par 	Date Apr 24/97
Checked by / Vérifié par G. LANGSTAFF	

Project No. / N° du projet 52274	Asset No. / N° du bien	Sheet No. / Feuille N° E-2
Drawing reference No. / Numéro de référence du dessin NOBP 97/R12		




2	APRIL 16/97	ISSUED FOR TENDER		
1	APRIL 7/97	OWNER'S REVIEW		
No. No	Date	Description	Drawn by Dessiné par	Approved Approuvé

Revision / Révision	
	A Detail number B Sheet number
	A Numéro de détail B Sur feuille numéro
Linear dimensions in millimeters	Dimensions linéaires en millimètres
Client Acceptance / Acceptation du client Signature _____ Date _____ File No. / N° de dossier _____	

 Public Works and Government Services Canada
Travaux publics et Services gouvernementaux Canada

Architecture and Engineering Services for Parks Canada
Services d'architecture et de génie pour Parcs Canada

Canada



The
THOMPSON
ROSEMOUNT
Group

1345 ROSEMOUNT AVE.,
CORNWALL, ONT.

Project title / Titre du projet

MARINE OPERATIONS BASE
PARKS CANADA
CANADIAN COAST GUARD
BRUCE PENINSULA NATIONAL PARK
BIG TUB HARBOUR TOBERMORY, ONTARIO

Drawing title / Titre du dessin

DETAILS

Scale / Échelle
1-20

Drawn by / Dessiné par	Date
SL / ILK	1999-11-11

Designed by / Conçu par	Date
G. LANGSTAFFE, J. WITHERSPOON	APRIL 1977

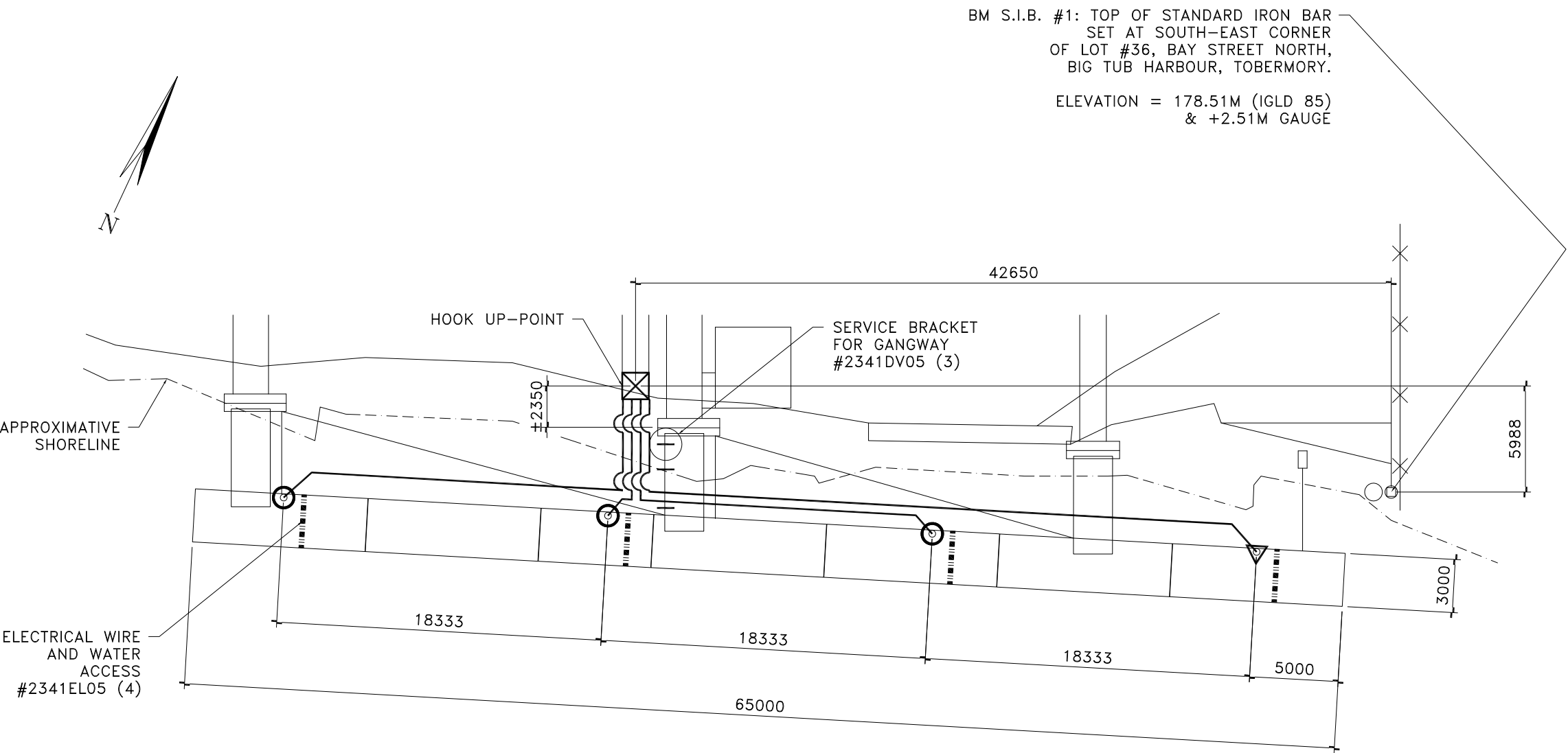
Approved by / Approuvé par Date

Checked by / Verifié par
G. LANGSTAFF

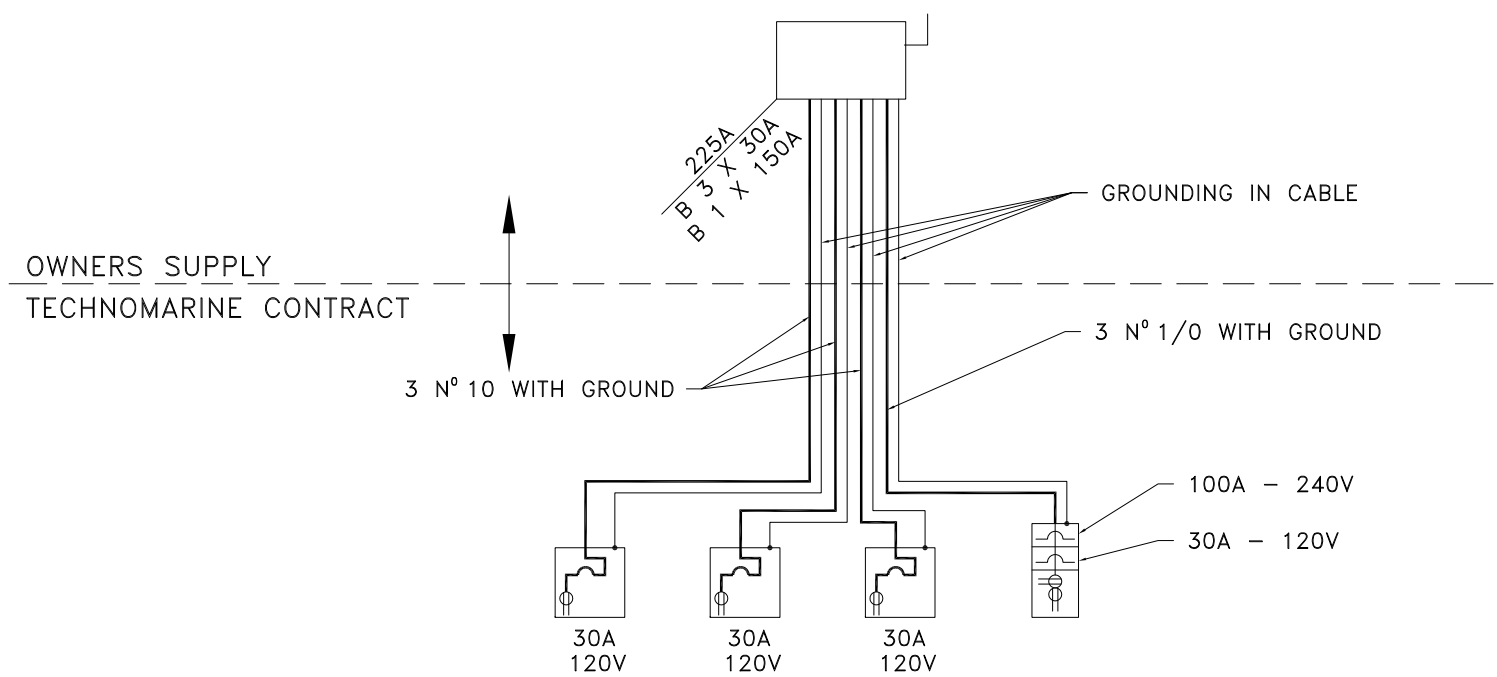
Project No. / N° du projet 52374	Asset No. / N° du bien	Sheet No. / Feuille N°
-------------------------------------	------------------------	---------------------------

Drawing reference No. / Numéro de référence du dessin
NPBP 97/R12

F-3



PLAN VIEW



DISTRIBUTION DIAGRAM

LEGEND:



1 OUTLET 30A, 120V, WATER TAPS,
LIGHT, PHOTOCCELL, 2 PHONES
OUTLETS, 2 TELEVISIONS OUTLETS
AND CIRCUIT BREAKER.



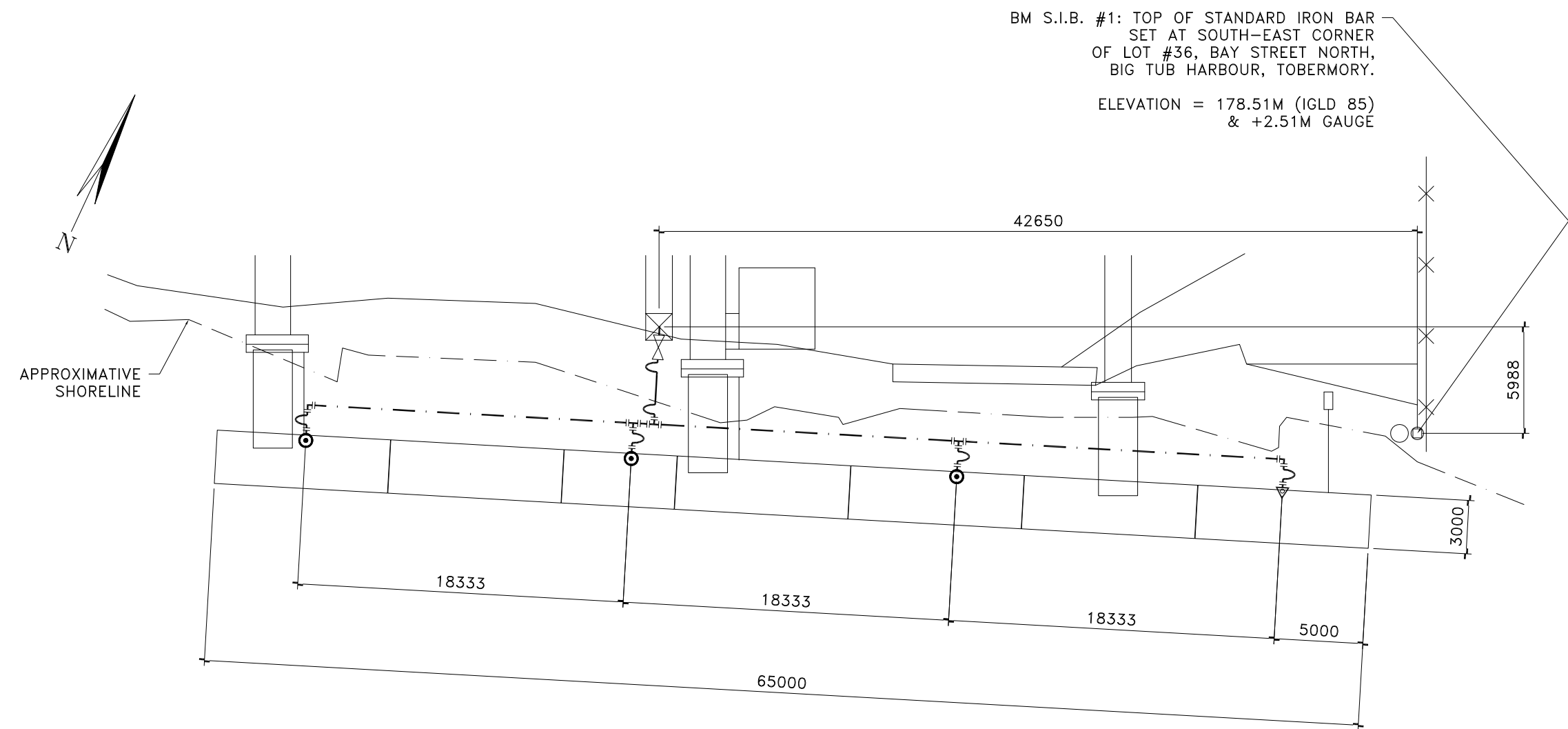
1 OUTLET 30A, 120V,
1 OUTLET 100A, 240V, WATER TAPS,
LIGHT, PHOTOCCELL, 2 PHONES
OUTLETS, 2 TELEVISIONS OUTLETS
AND CIRCUIT BREAKER.

NOTES:

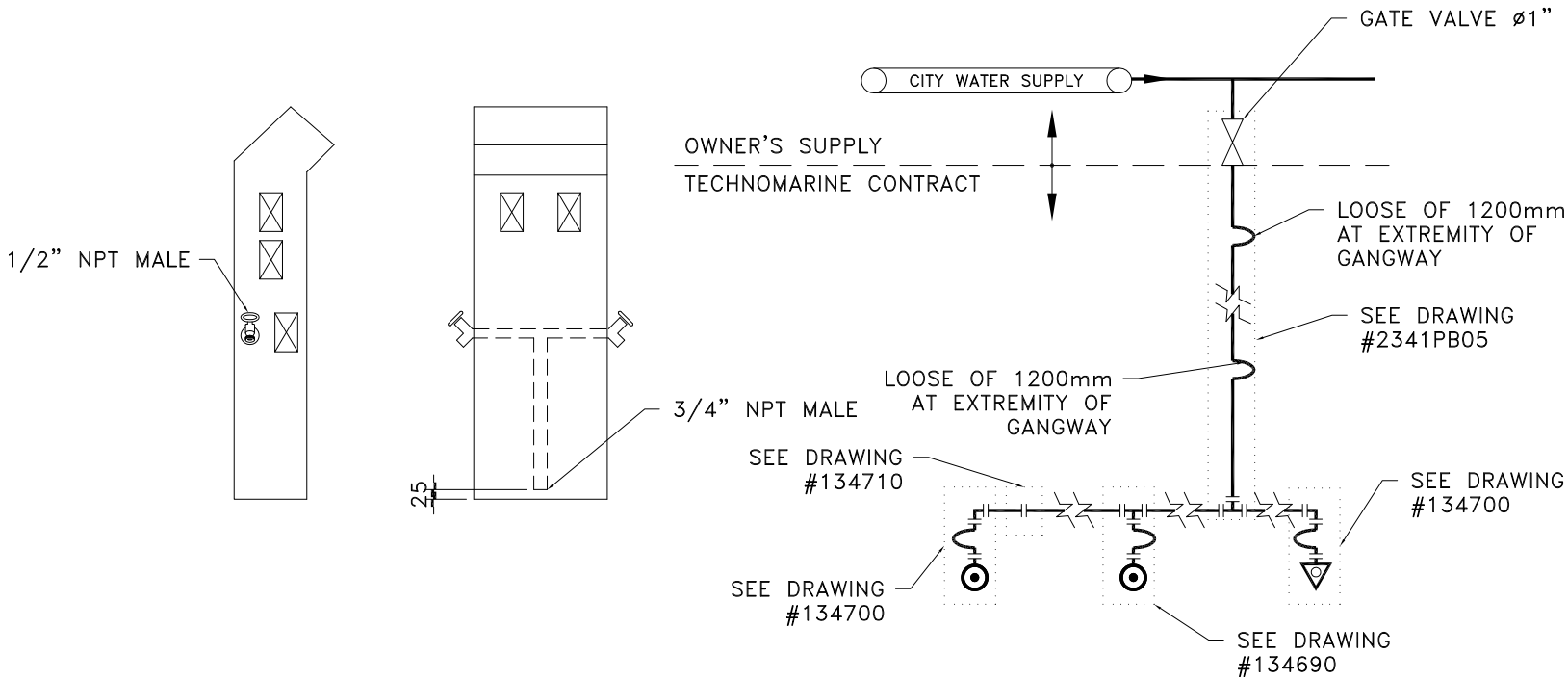
1. WIRE LENGTH BETWEEN PEDESTALS IS
EQUAL AT CENTER DIST. PLUS 762mm
AT BOTH ENDS.
2. LET A LOOSE OF 1200mm AT EACH
EXTREMITY OF THE GANGWAY TO
ALLOW DOCK MOUVEMENT.

TECHNOMARINE®

4			
3			
2			
1			
No. No.	Revision Revision	Date Date	Par By
Projet	MARINE OPERATION BASE FLOATING DOCK SYSTEM TOBERMORY, ONTARIO		
Dessin	ELECTRICAL LAYOUT		Drawing
Concu par	Designed by	Date	Date
TECHNOMARINE		MARCH '97	
Dessine par	Drawn by	Date	Date
C. BROSSEAU		MARCH 5, '97	
Verifie par	Verified by	Date	Date
Approuve par	Approved by	Date	Date
Echelle	Scale	Trace	Traced
	1:300		
No. de projet	2341		Project no.
No. de dessin	2341EL01		Drawing no.



PLAN VIEW



DOCKSIDE UTILITY CENTER
(ON DOCK MOUNTING)

WATER SERVICE DIAGRAM

LEGENDE	
	1 OUTLET 30A, 120V 2 HOSE VALVES, 13mm (1/2")
	1 OUTLET 30A, 120V 1 OUTLET 100A, 240V 2 HOSE VALVES, 13mm (1/2")
	INSERT COUPLING
	"T" CONNECTOR
	GATE VALVE $\varnothing 25\text{mm}$ (1" \varnothing) I.D.
	REINFORCED PVC CLEAR BRAIDED FLEXIBLE HOSE 19mm (3/4") I.D. 915mm (36") LONG SECTION U/N
	FRESH WATER LINE, POLYETHYLENE PIPE (SERIES 75), 25mm (1") I.D.
	CITY WATER SUPPLY

MATERIAL LIST

PART NO	DESCRIPTION	QTY
-	POLYETHYLENE PIPE $\varnothing 1"$, SERIE 75	60M
2341PB05	FLEXIBLE CONNECTOR FOR GANGWAY	1
134690	MAIN TO EPC	2
134700	MAIN TO EPC (END OF LINE)	2
134710	LINE TYP. CONN.	2
134790	PIPE LINE ATTACHMENT	3

4			
3			
2			
1			
No. No.	Revision Revision	Date Date	Par By

Projet	MARINE OPERATION BASE FLOATING DOCK SYSTEM TOBERMORY, ONTARIO	Project
--------	---------------------------------------------------------------------	---------

Dessin	Drawing
WATER SERVICE LAYOUT	

Concu par TECHNOMARINE	Designed by	Date MARCH '97	Date
---------------------------	-------------	-------------------	------

Dessine par C. BROSSEAU	Drawn by	Date MARCH 5, '97	Date
----------------------------	----------	----------------------	------

Verifie par	Verified by	Date	Date
-------------	-------------	------	------

Approuve par	Approved by	Date	Date
--------------	-------------	------	------

Echelle 1:300	Scale	Trace	Traced
------------------	-------	-------	--------

No. de projet 2341	Project no.
-----------------------	-------------

No. de dessin 2341PB01	Drawing no.
---------------------------	-------------

TECHNOMARINE®

ENSIGN

DOCKSIDE UTILITY CENTER

ON-DOCK MOUNTING SHOWN

DOWN FLUORESCENT LIGHT
Illuminates the dock and the unit.

ELECTRONIC KWh METERS
Monitors the power usage of each slip.

**ANY COMBINATION OF
FOUR OUTLETS**
20 Amp, 30 Amp, or 50 Amp.

CIRCUIT BREAKERS

WATER HOSE HANGERS

TV AND TELEPHONE OUTLETS
Lockable to prevent unauthorized use.

COMPLETE WATER HOOK-UP
With 3/4" copper plumbing.

**ISOLATED HIGH VOLTAGE FROM
WATER/TV AND TELEPHONE**

**COATED TO MATCH MANY
DIFFERENT COLORS**

DUAL BUSS LOOP WIRING

VERY LOW COST

PATENT PENDING



SPECIFICATIONS

	ENSIGN	ENSIGN MATE	ENSIGN DOCK BOX
VOLTAGE (VAC)	120 / 240	120 / 240	120 / 240
CURRENT (AMPS MAX.)	200	100	100
NO. OF OUTLETS (MAX.)	4	2	2
9 WATT FLUORESCENT LAMP	YES	YES	YES
KWh METERING	YES	NO	YES
TV/TELEPHONE	YES	NO	YES
WATER	YES	YES	NO
HEIGHT	42" (1067mm)	36" (914mm)	26" (660mm)
WIDTH	8" (203mm)	8" (203mm)	9.5" (241mm)
DEPTH	6" (152mm)	4" (102mm)	5" (127mm)
WEIGHT	38 LBS (17Kg)	26 LBS (12Kg)	30 LBS (14Kg)

3 units LWSS-IN-302-10100-022

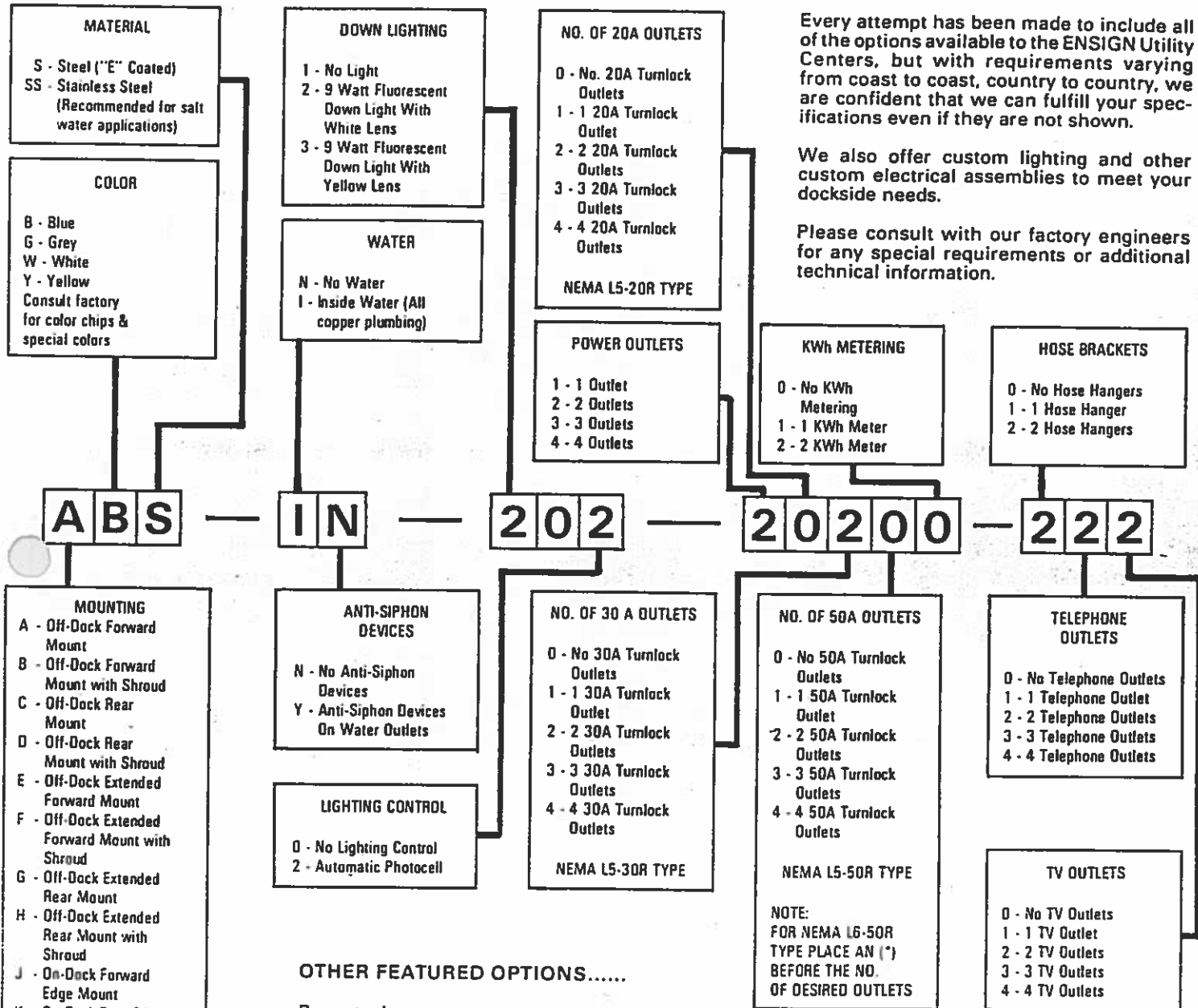
ENSIGN, On-Dock Flange Mount, stainless steel with a white protective powder coating, inside water with all copper plumbing, 9 watt fluorescent light with yellow lens and automatic photocell control, one 30A turnlock outlets with circuit breaker, 2 telephone and 2 television outlets.

1 unit LWSS-IN-302-20110-022**

ENSIGN, On-Dock Flange Mount, stainless steel with a white protective powder coating, inside water with all copper plumbing, 9 watt fluorescent light with yellow lens and automatic photocell control, one 30A turnlock outlet with circuit breaker, one 100A/250V pin and sleeve outlet with circuit breaker, and two telephone and two television outlets.

ENSIGN

ORDERING INFORMATION



OTHER FEATURED OPTIONS.....

Receptacles:

16 Amp, 2 Pole, 3 Wire, 240 Volt Pin and Sleeve Receptacle.
 32 Amp, 2 Pole, 3 Wire, 240 Volt Pin and Sleeve Receptacle.
 63 Amp, 2 Pole, 3 Wire, 240 Volt Pin and Sleeve Receptacle.
 100 Amp, 3 Pole, 4 Wire, 240 Volt Pin and Sleeve Receptacle.
 100 Amp, 4 Pole, 5 Wire, 3 Phase Pin and Sleeve Receptacle.

Terminal Blocks:

(Standard Block is a 3 Pole, 2/0 AWG, Buss Loop + Buss Loop Ground)

350 MCM, 3 Pole, Buss Loop W/ 2/0 AWG, Buss Loop Ground
 350 MCM, 4 Pole, Buss Loop W/ 2/0 AWG, Buss Loop Ground
 600 MCM, 3 Pole, Buss Loop W/ 2/0 AWG, Buss Loop Ground
 600 MCM, 4 Pole, Buss Loop W/ 2/0 AWG, Buss Loop Ground

ENSIGN High quality fiberglass dockbox.