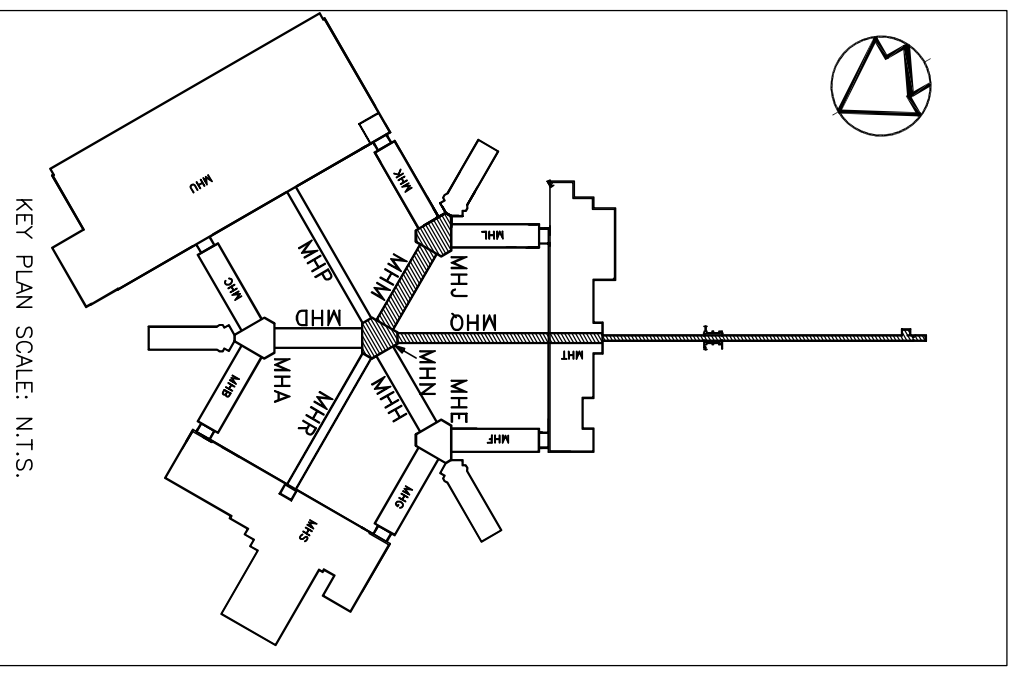
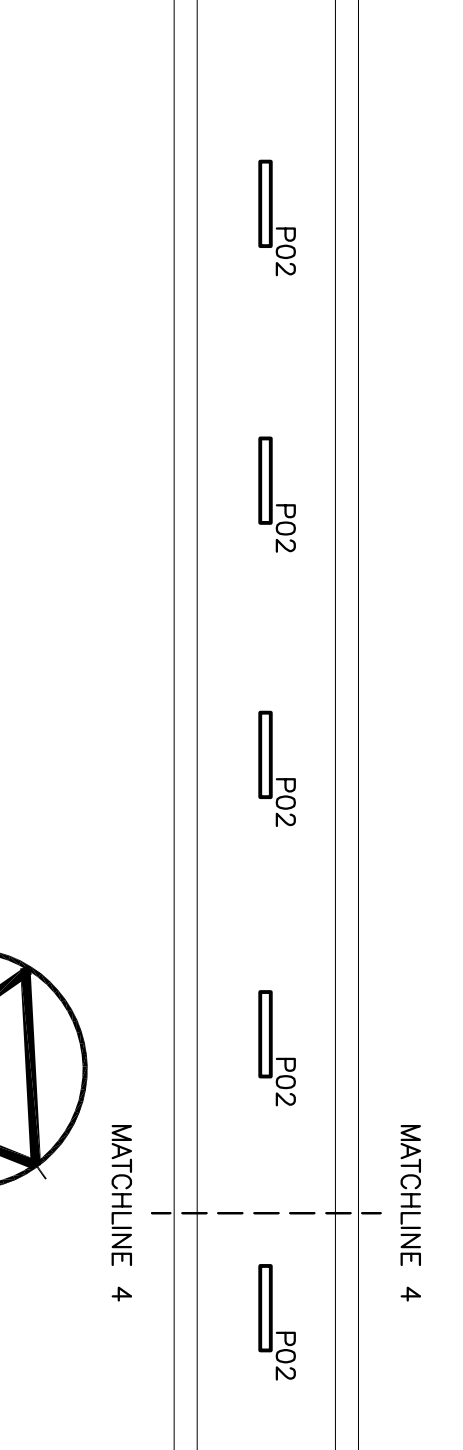
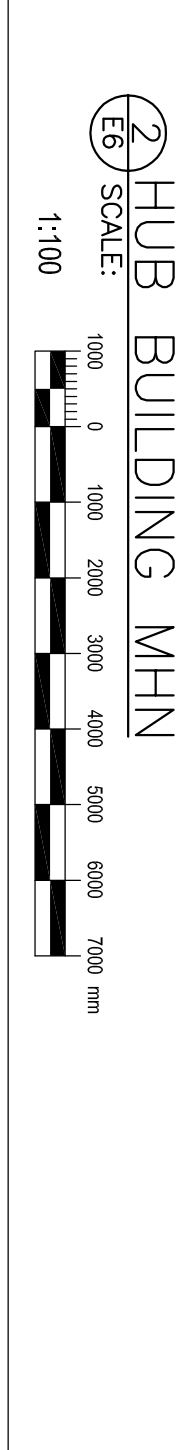
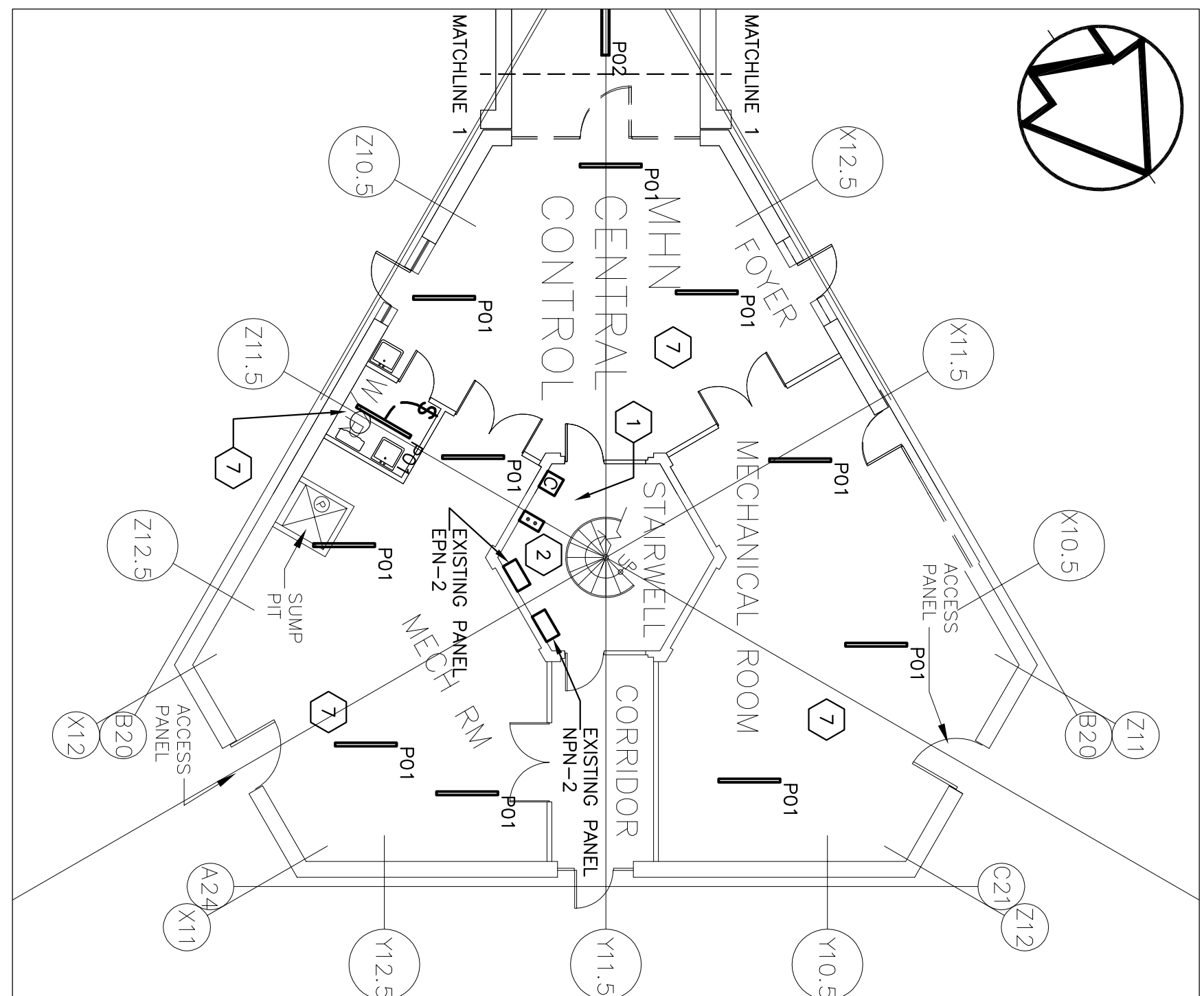
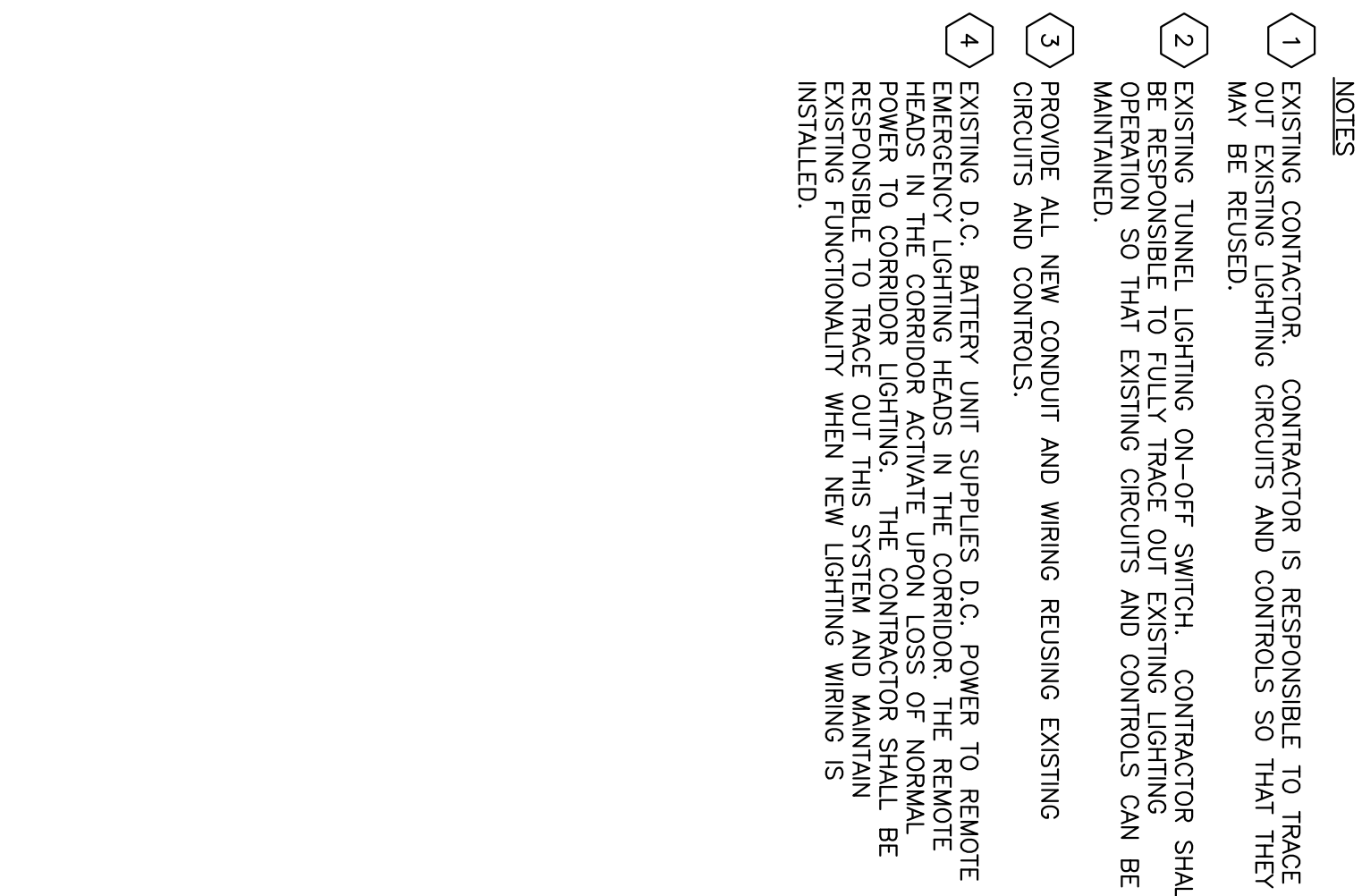
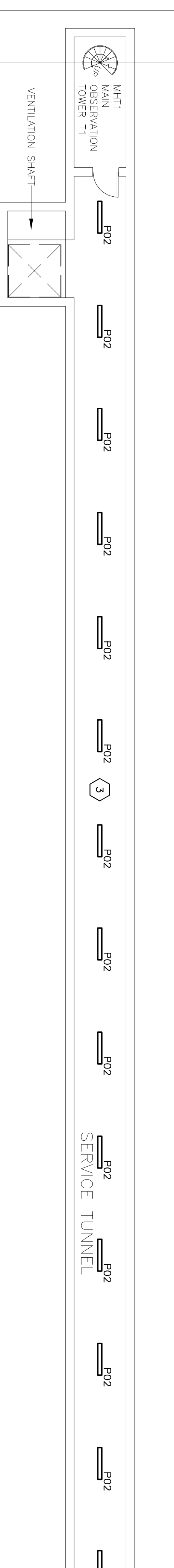
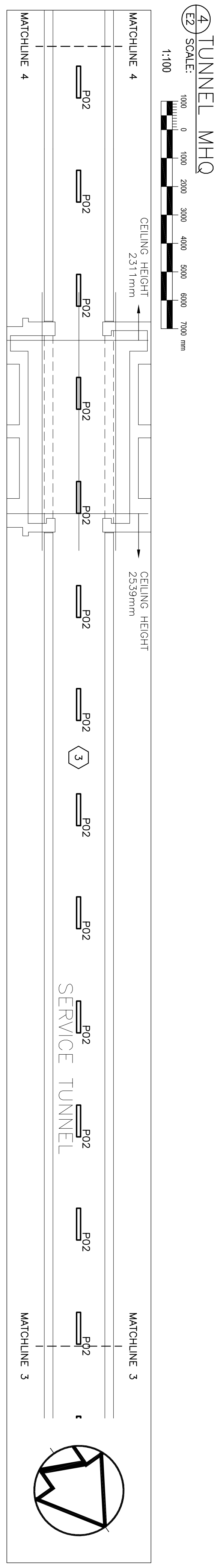
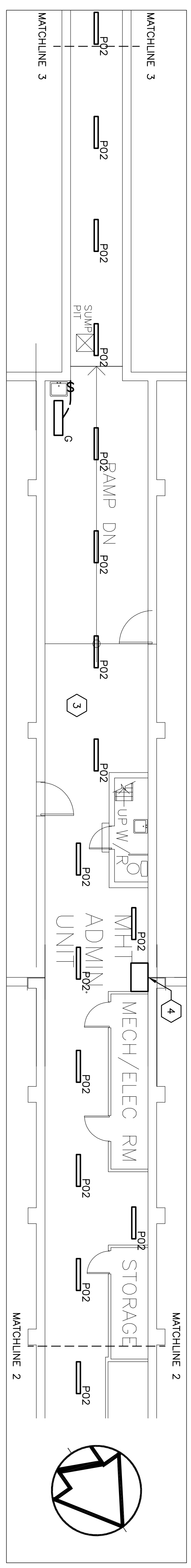
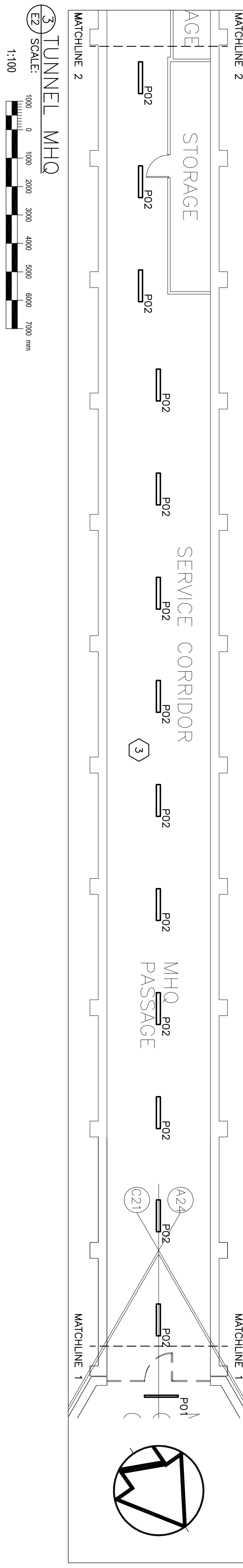
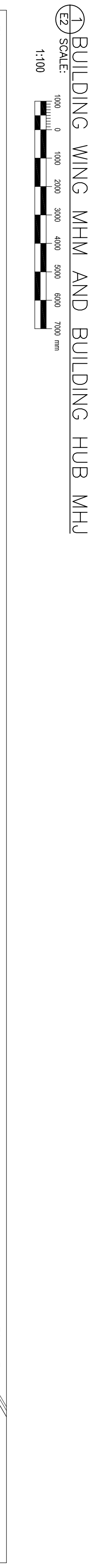


- NOTES
- PROVIDE ALL NEW CONDUIT AND WIRING FOR MECHANICAL ROOM LIGHTS. REUSE CIRCUIT NPM-1, CCT. NO. 1 PRESENTLY FEEDING THESE LIGHTS.
 - PROVIDE ALL NEW CONDUIT AND WIRING FOR TUNNEL LIGHTING REUSE CIRCUIT EPM-3.
 - TRACE OUT TO DETERMINE EXISTING CIRCUITS.

- NOTES
- EXISTING CONTRACTOR. CONTRACTOR IS RESPONSIBLE TO TRACE EXISTING LIGHTING CIRCUITS AND CONTROLS SO THAT THEY MAY BE REUSED.
 - EXISTING TUNNEL LIGHTING ON-OFF SWITCH. CONTRACTOR SHALL BE RESPONSIBLE TO FULLY TRACE OUT EXISTING LIGHTING OPERATION SO THAT EXISTING CIRCUITS AND CONTROLS CAN BE MAINTAINED.
 - PROVIDE ALL NEW CONDUIT AND WIRING REUSING EXISTING CIRCUITS AND CONTROLS.
 - EXISTING D.C. BATTERY UNIT SUPPLIES D.C. POWER TO REMOVE THE BATTERY HEADS IN THE ROOMS. THE CONTRACTOR SHALL BE RESPONSIBLE TO TRACE OUT THIS SYSTEM AND MAINTAIN EXISTING FUNCTIONALITY WHEN NEW LIGHTING WIRING IS INSTALLED.



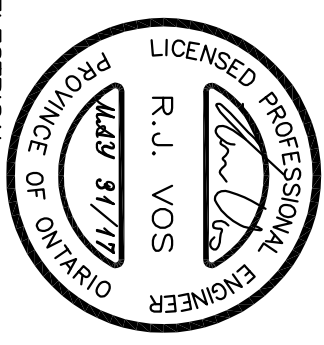
NO.	DESCRIPTION	DATE	BY
0	ISSUED FOR TENDER	MAR-21-2017	RV
REVISIONS			

Kirkland Engineering Ltd BCIN: 28857

NOT TO BE USED FOR CONSTRUCTION UNLESS SIGNED BY THE ENGINEER.

THIS DRAWING IS AN INSTRUMENT OF PROFESSIONAL SERVICE FOR USE EXCLUSIVELY ON THIS PROJECT. IS PROHIBITED.

Copyright 2017 Kirkland Engineering Ltd.



KIRKLAND ENGINEERING LTD.

570 West Street
Perth, Ontario
K8H 3K8
P: (705) 741-1526
www.kirklandeng.com

Milhaven Institution
Tunnel Lighting
HWY. 33
Bath, Ontario

REVISION	DATE	BY	CHKD	APPD
0	ISSUED FOR TENDER	MAR-21-2017	RV	RV

E2

5975

6 TUNNEL MHQ
SCALE: 1:100

5 TUNNEL MHQ
SCALE: 1:100

4 TUNNEL MHQ
SCALE: 1:100

3 TUNNEL MHQ
SCALE: 1:100

2 TUNNEL MHQ
SCALE: 1:100

1 BUILDING WING MHM AND BUILDING HUB MHJ
SCALE: 1:100

7 HUB BUILDING MHN
SCALE: 1:100

6 TUNNEL MHQ
SCALE: 1:100