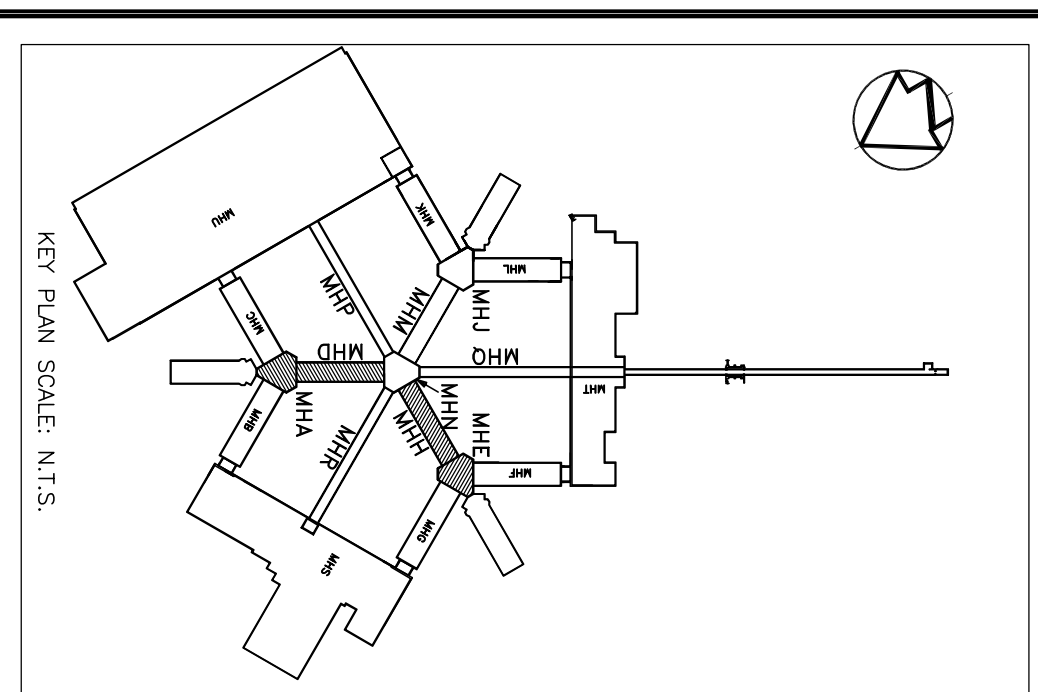
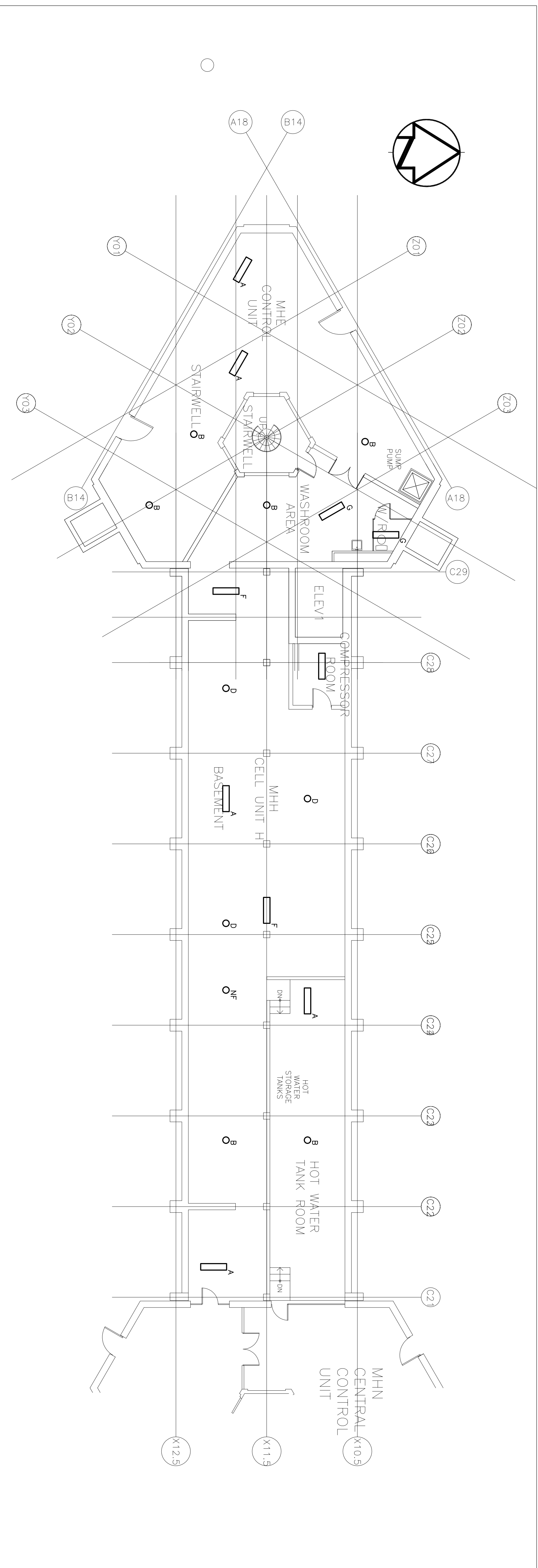


TYPE	EXISTING FIXTURE DESCRIPTION	WATTS
A	SURFACE 1"x4" FLUORESCENT 2x32W T8	60
B	100W METAL HALIDE FIXTURE	129
C	100W INCANDESCENT FIXTURE	100
D	100W MH BALLAST AND 70W HPS LAMP	100
F	1"x4" SURFACE FLUORESCENT WITH 2x34W T12 LAMPS	81
G	SURFACE WRAP 2x32W T8	60
H	8' STRIP C/W 2x...W F96 T12 LAMP	
J	4' SURFACE STRIP C/W 2x34W T12 LAMP	81
K	1"x4" SURFACE FLUORESCENT C/W 2 X-F96W T12 LAMPS	93
L	PORCELAIN KENLESS SOCKET 80W A LAMP	60
M	ORIGINAL INCANDESCENT FIXTURE 2x100W LAMPS	200
N	PENDANT MOUNTED INCANDESCENT WITH 150W A LAMP	150
NF	NO FIXTURE JUST WIRING	0

GENERAL DEMOLITION NOTES
 G01. REMOVE ALL EXISTING FIXTURE SHOWN.
 G02. PRIOR TO DEMOLITION, TRACE OUT FUNCTIONALITY OF EXISTING LIGHTING SYSTEMS AND LAMPS TO BE MAINTAINED WHEN NEW LIGHTS ARE INSTALLED.



1 WING BUILDING MHD AND HUB BUILDING MHA
 SCALE: 1:100

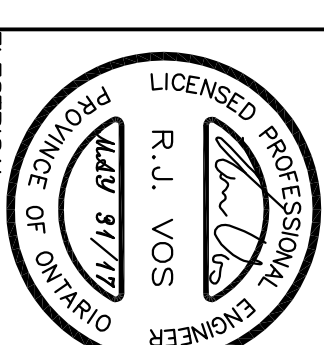


2 WING BUILDING MHH AND HUB BUILDING MHE
 SCALE: 1:100

NO.	DESCRIPTION	DATE	BY
0	ISSUED FOR TENDER	MR-31-2017	RV

REVISIONS

Kirkland Engineering Ltd BCIN: 28857



NOT TO BE USED FOR CONSTRUCTION UNLESS SIGNED BY THE ENGINEER.
 THIS DRAWING IS AN INSTRUMENT OF PROFESSIONAL SERVICE FOR USE EXCLUSIVELY ON THIS PROJECT. IS PROHIBITED.
 Copyright 2017 Kirkland Engineering Ltd.

KIRKLAND ENGINEERING LTD.
 570 West Street
 Peterborough, Ontario
 K9H 3N8
 P: (705) 741-1526
 www.kirklandeng.com

Milhaven Institution
 Tunnel Lighting

HWY. 33
 Bath, Ontario

PROJECT
 BUILDINGS MH-D, A, H, E
 LIGHTING DEMOLITION PLAN

DESIGN	DATE	SCALE	NOTES
DESIGN	RAW	SCALE AS NOTED	
CHECKED	RAW		
APPROVED	RAW		
PROJECT	5975		

E5

COMP. FILE NO. 5975/5