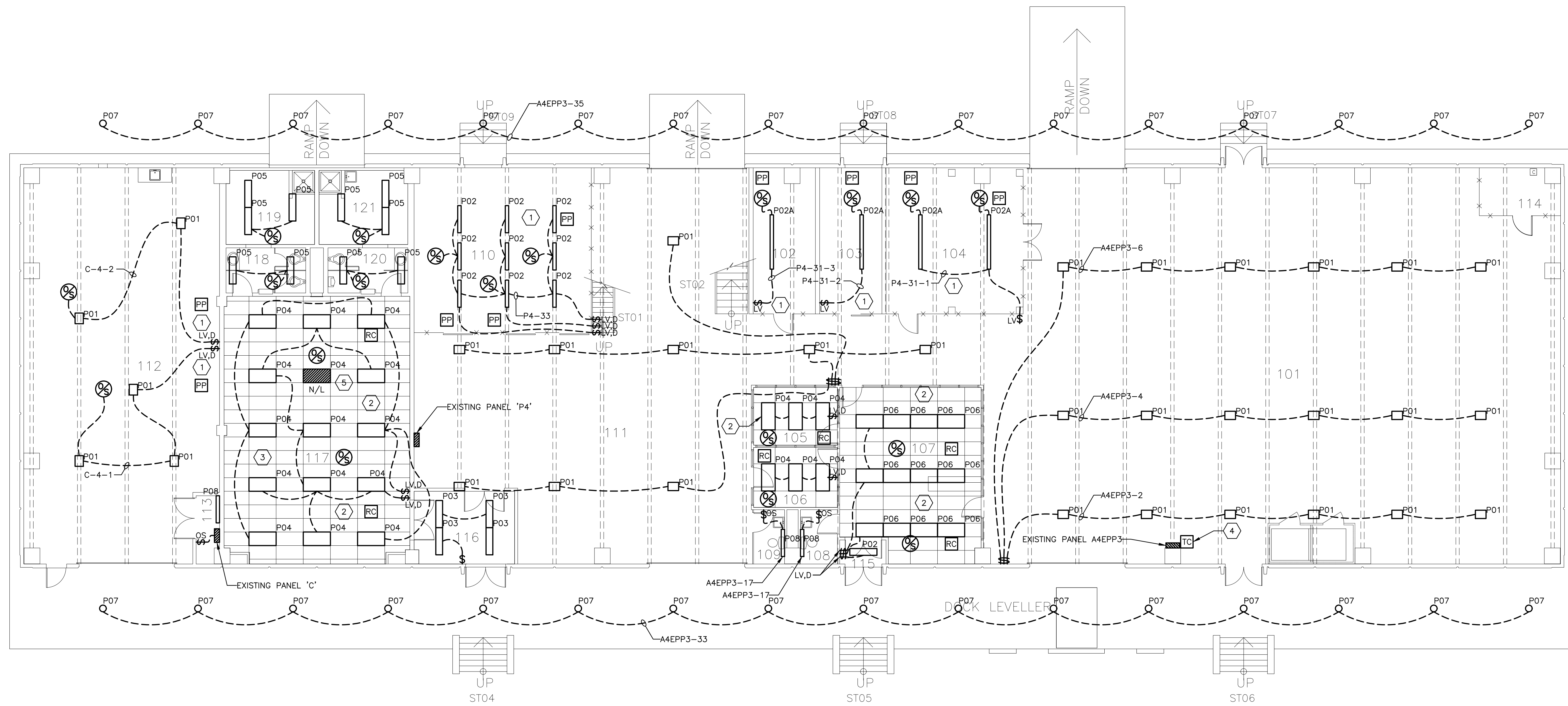
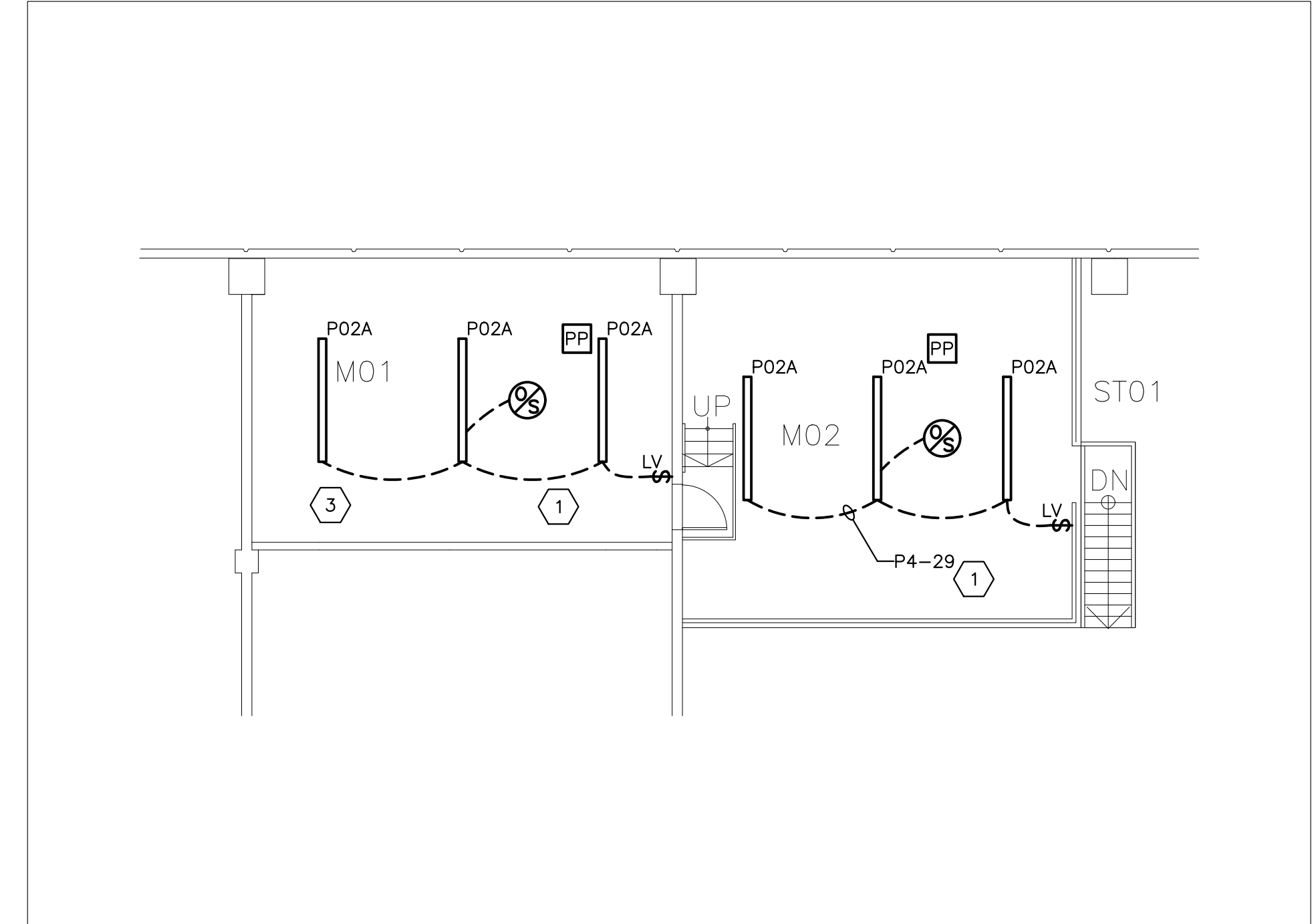
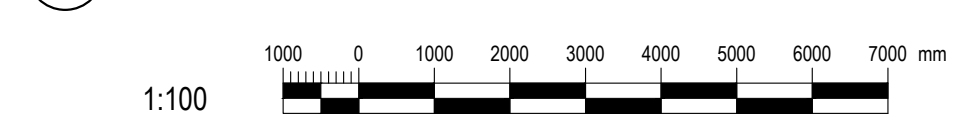


ROOM INDEX

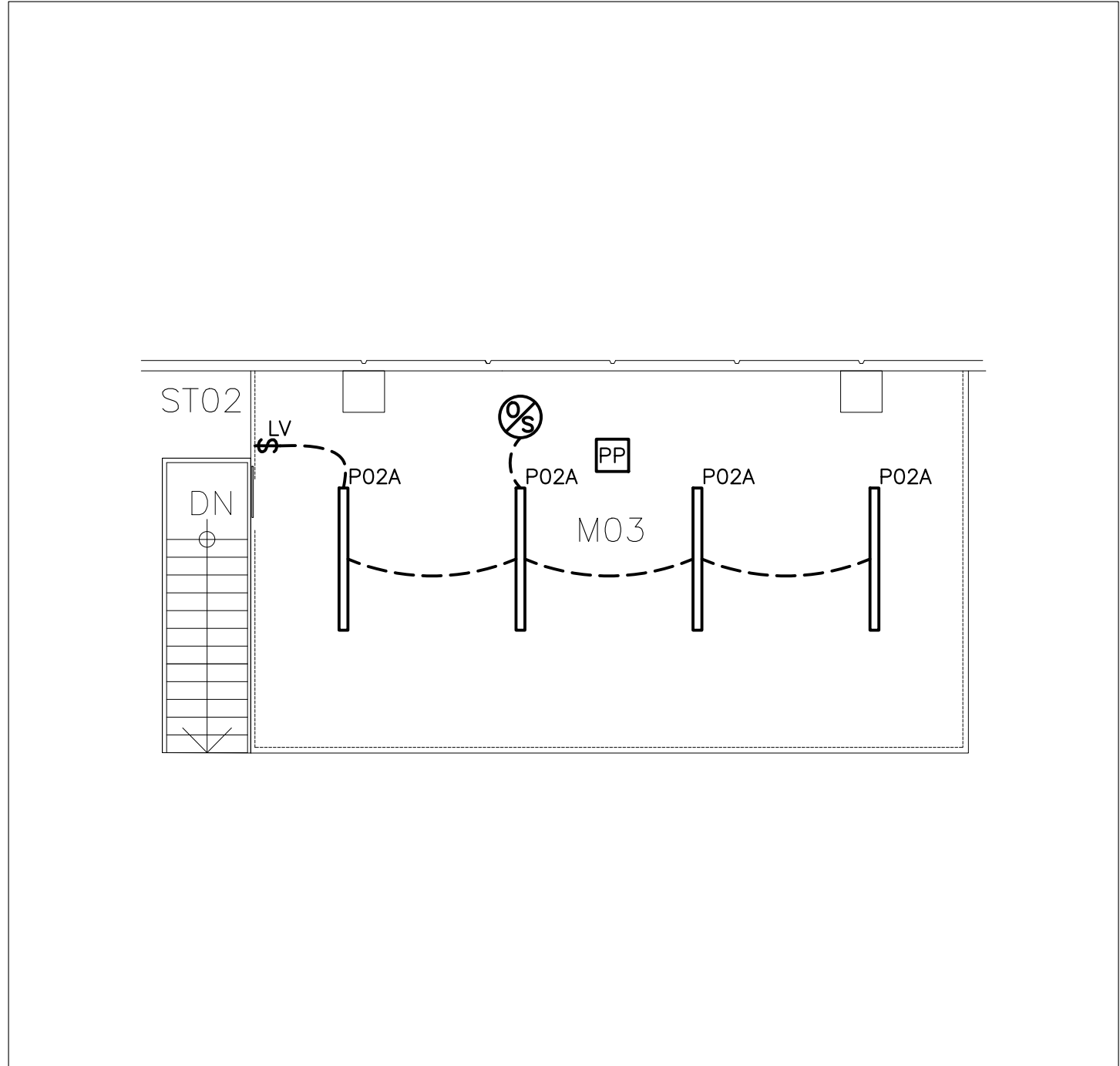
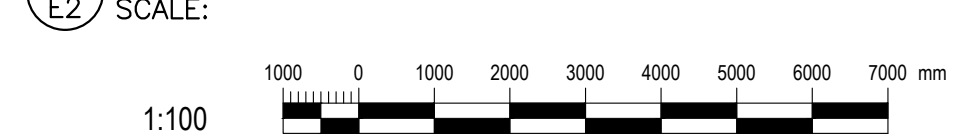
101	GENERAL STORES
102	SECURITY STORAGE
103	SECURITY STORAGE
104	SECURITY STORAGE
105	OFFICE
106	OFFICE
107	GENERAL OFFICE
108	WASHROOM
109	WASHROOM
110	SECURITY STORAGE
111	GENERAL STORAGE
112	COMPOSTING ROOM
113	EQUIPMENT ROOM
114	SPRINKLER ROOM
115	VESTIBULE
116	VESTIBULE
117	EXERCISE AREA
118	FEMALE WASHROOM
119	FEMALE CHANGE/SHOWER ROOM
120	MALE WASHROOM
121	MALE CHANGE/SHOWER ROOM
M01	MECHANICAL ROOM
M02	STORAGE
M03	STORAGE
ST01	STAIRS
ST02	STAIRS



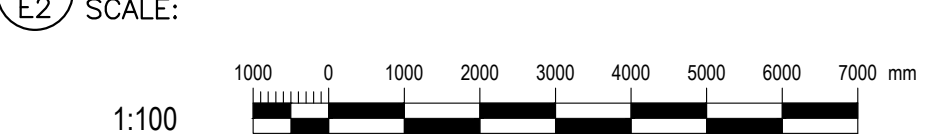
1 LIGHTING FLOOR PLAN



WA04 GENERAL STORES BUILDING
MEZZANINE M01 & M02 LIGHTING PLAN



WA04 GENERAL STORES BUILDING
MEZZANINE M03 LIGHTING PLAN



GENERAL LIGHTING NOTES

- GD1. PROVIDE ALL NEW CONDUIT AND WIRING.
 - GD2. 17. THIRD PARTY TESTING
- 1 THE CONTRACTOR IS RESPONSIBLE TO PROVIDE THIRD PARTY TESTING OF THE LIGHTING SYSTEM IN ACCORDANCE WITH ASHRAE STANDARD 90.1-2010, SECTION 9.4.4 FUNCTIONAL TESTING. THE PARTY RESPONSIBLE FOR THE FUNCTIONAL TESTING SHALL NOT BE DIRECTLY INVOLVED IN EITHER THE DESIGN OR CONSTRUCTION OF THE PROJECT AND SHALL PROVIDE DOCUMENTATION CERTIFYING THAT THE INSTALLED LIGHTING CONTROLS MEET OR EXCEED ALL DOCUMENTED PERFORMANCE CRITERIA.
- 2 LIGHTING CONTROL DEVICES AND CONTROL SYSTEMS SHALL BE TESTED TO ENSURE THAT CONTROL HARDWARE AND SOFTWARE ARE CALIBRATED, ADJUSTED, PROGRAMMED AND IN PROPER WORKING CONDITION IN ACCORDANCE WITH THE CONSTRUCTION DOCUMENTS AND MANUFACTURER'S INSTALLATION INSTRUCTIONS.
- 3 WHEN SENSORS, TIME SWITCHES, PROGRAMMABLE SCHEDULE CONTROLS OR PHOTOSENSORS ARE INSTALLED, THE FOLLOWING PROCEDURES SHALL BE PERFORMED:
- 3.1 CONFIRM THAT THE PLACEMENT, SENSITIVITY AND TIME-OUT ADJUSTMENTS FOR OCCUPANT SENSORS YIELD ACCEPTABLE PERFORMANCE, LIGHTS TURN OFF ONLY AFTER SPACE IS VACATED. WHERE AN AUTO-ON MODE HAS BEEN SELECTED, LIGHTS DO NOT TURN ON UNLESS SPACE IS OCCUPIED.
 - 3.2 CONFIRM THAT THE TIME SWITCHES AND PROGRAMMABLE SCHEDULE CONTROLS ARE PROGRAMMED CORRECTLY TO TURN THE LIGHTS OFF.
 - 3.3 WHERE DAYLIGHT HARVESTING CAPABILITY HAS BEEN INSTALLED, CONFIRM THAT PHOTOSENSOR CONTROLS REDUCE ELECTRIC LIGHT LEVELS BASED ON THE AMOUNT OF USABLE DAYLIGHT IN THE SPACE AS SPECIFIED.

DRAWING NOTES

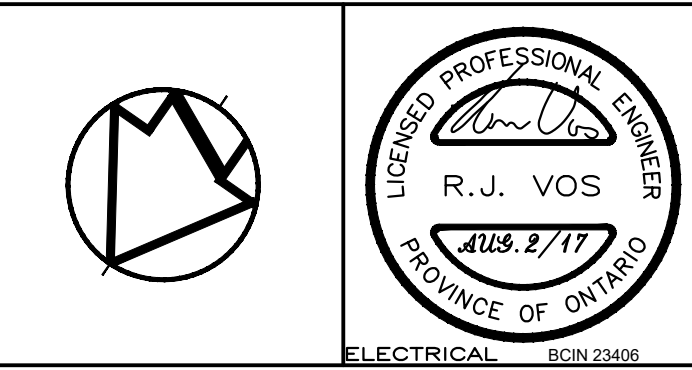
- 1 OPERATION OF LIGHTS SHALL BE MANUAL ON AND AUTOMATIC OFF WITH MANUAL OFF OVERRIDE.
- 2 SEE DETAIL 1 ON DRAWING E3 FOR CONTROL OF LIGHTING IN THIS AREA
- 3 IN ROOMS INDICATED BY THIS NOTE CONTRACTOR SHALL BE RESPONSIBLE TO TRACE OUT CIRCUITS TO DETERMINE ORIGIN. REUSE SAME CIRCUITS TO FEED NEW LIGHTING BUT PROVIDE ALL NEW CONDUIT AND WIRE.
- 4 REPLACE EXISTING EXTERIOR LIGHTING TIME CLOCK WITH NEW 7-DAY PROGRAMMABLE TIMECLOCK.
- 5 CONNECT NEW LIGHTING FIXTURE TO EXISTING NIGHT LIGHTING CIRCUIT SO THAT IT IS ON 24 HOURS/DAY AND 7 DAYS/WEEK.

3 LIGHTING CONTROL LEGEND

SCALE: N.T.S.

NO.	DESCRIPTION	DATE	BY
2	ISSUED FOR TENDER	AUGUST 2, 17	RV
1	ISSUED FOR 99% REVIEW	JULY 14, 17	RV
0	ISSUED FOR REVIEW	APRIL 6, 17	RV

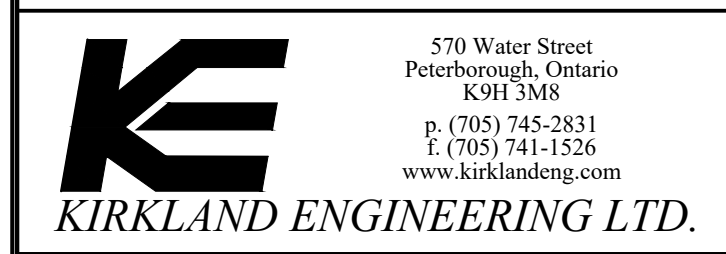
Kirkland Engineering Ltd BCIN: 28857



NOT TO BE USED FOR CONSTRUCTION UNLESS SIGNED BY THE ENGINEER.

THIS DRAWING IS AN INSTRUMENT OF PROFESSIONAL SERVICE FOR USE EXCLUSIVELY ON THIS PROJECT. RE-USE OF ANY PORTION OF THIS DOCUMENT IS PROHIBITED.

Copyright 2017 Kirkland Engineering Ltd



PROJECT
**Exterior/Interior Lighting
Warkworth Institution
Stores Building**

Warkworth, Ontario

TITLE
**NEW
LIGHTING FLOOR PLAN**

DESIGN	RJV	SCALE AS NOTED
DRAWN	KER	DWG NO.
CHECKED	RJV	E2
APPROVED	RJV	
PROJECT	5973	