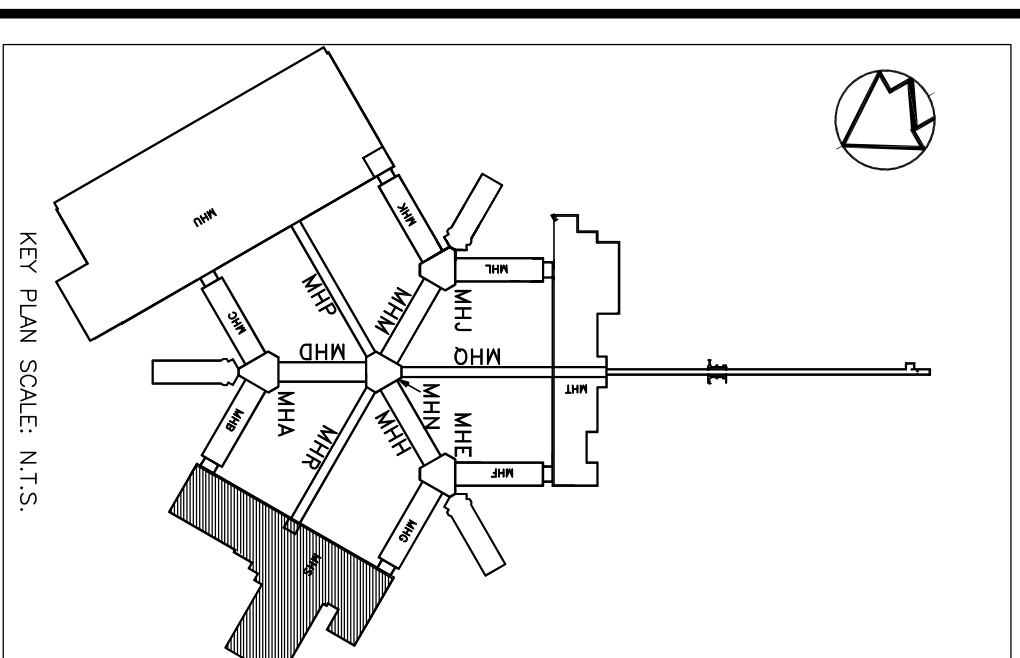
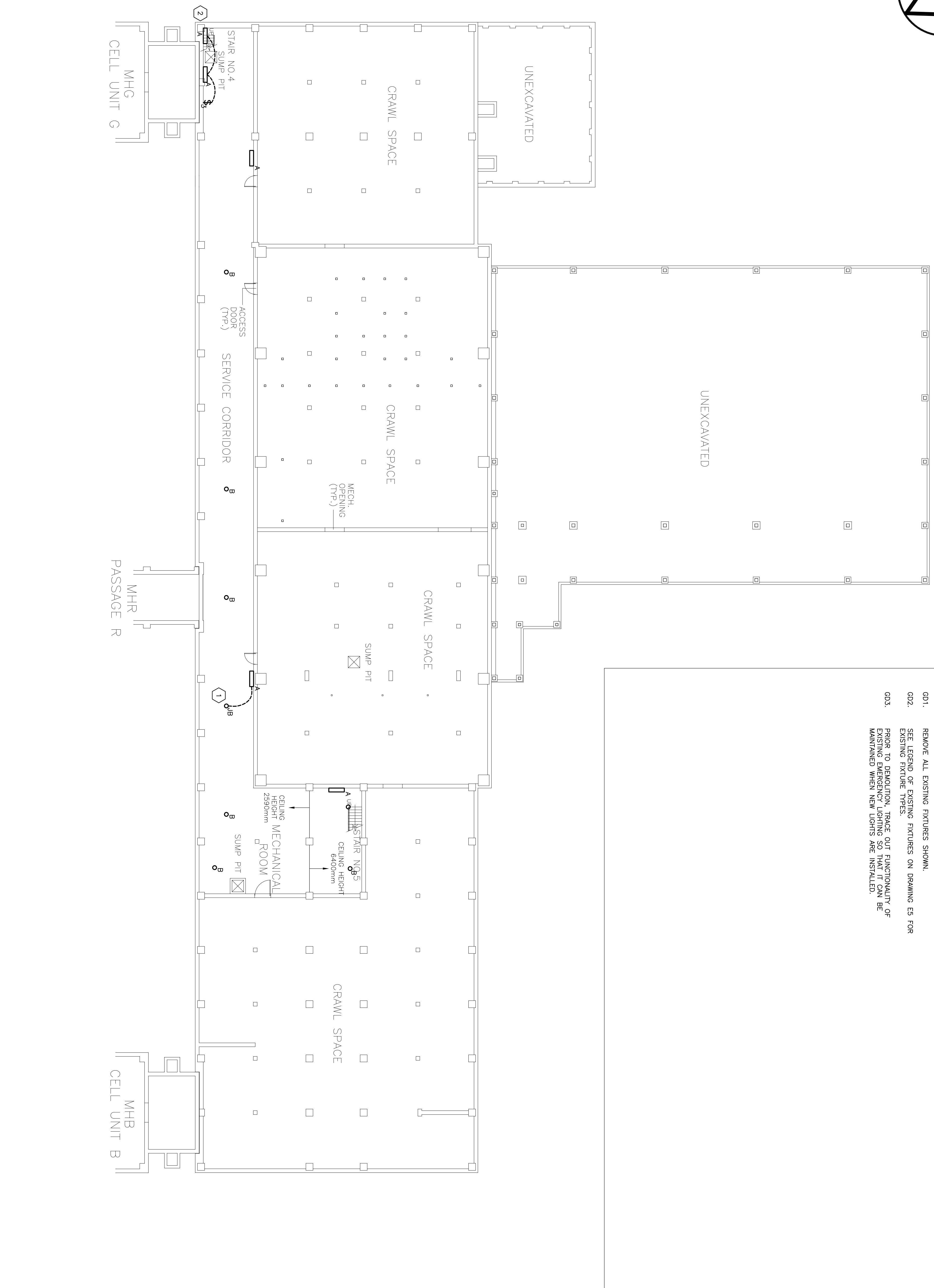


NOTES

- 1 ORIGINAL JUNCTION BOX
- 2 TWO 3-WAY SWITCH AT TOP OF STAIR.

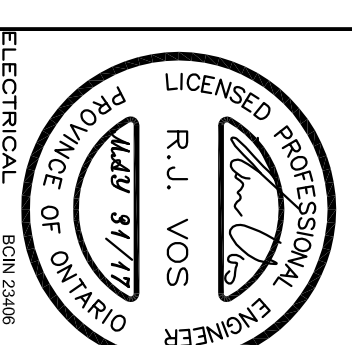
GENERAL DEMOLITION NOTES

- GD1. REMOVE ALL EXISTING FIXTURES SHOWN.
- GD2. SEE LEGEND OF EXISTING FIXTURES ON DRAWING E9 FOR EXISTING FIXTURE TYPES.
- GD3. PRIOR TO DEMOLITION, TRACE OUT FUNCTIONALITY OF EXISTING EMERGENCY LIGHTING SO THAT IT CAN BE MAINTAINED WHEN NEW LIGHTS ARE INSTALLED.



NO.	DESCRIPTION	DATE	BY
0	ISSUED FOR TENDER	MA-21-2017	RV
REVISIONS			

Kirkland Engineering Ltd BCIN: 28857



NOT TO BE USED FOR CONSTRUCTION UNLESS SIGNED BY THE ENGINEER.
 THIS DRAWING IS AN INSTRUMENT OF PROFESSIONAL SERVICE FOR USE EXCLUSIVELY ON THIS PROJECT. IS PROHIBITED.
 Copyright 2017 Kirkland Engineering Ltd.

KIRKLAND ENGINEERING LTD.
 570 Water Street
 Peterborough, Ontario
 K9H 3N8
 P: (705) 741-1526
 www.kirklandeng.com

**Milhaven Institution
 Tunnel Lighting**

**HWY. 33
 Bath, Ontario**

**BUILDING MHS
 LIGHTING DEMOLITION PLAN**

DESIGN	SCALE	DATE
DESIGNED: KER	SCALE AS NOTED	
CHECKED: RAV		
APPROVED: RAV		
Project		5975

E7 BUILDING MHS LIGHTING DEMOLITION PLAN

SCALE: 1:150
 0 2000 4000 6000 8000 10000mm