

ROOM INDEX

- 101 GENERAL STORES
- 102 SECURITY STORAGE
- 103 SECURITY STORAGE
- 104 SECURITY STORAGE
- 105 OFFICE
- 106 OFFICE
- 107 GENERAL OFFICE
- 108 WASHROOM
- 109 WASHROOM
- 110 SECURITY STORAGE
- 111 GENERAL STORAGE
- 112 COMPOSTING ROOM
- 113 EQUIPMENT ROOM
- 114 SPRINKLER ROOM
- 115 VESTIBULE
- 116 VESTIBULE
- 117 EXERCISE AREA
- 118 FEMALE WASHROOM
- 119 FEMALE CHANGE/SHOWER ROOM
- 120 MALE WASHROOM
- 121 MALE CHANGE/SHOWER ROOM
- M01 MECHANICAL ROOM
- M02 STORAGE
- M03 STORAGE
- ST01 STAIRS
- ST02 STAIRS

GENERAL DEMOLITION NOTES

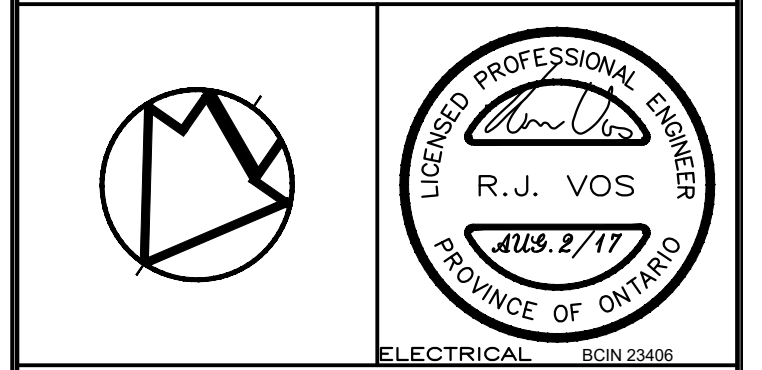
GD1. REMOVE ALL EXISTING LIGHT SWITCHES, CONTROLS, CONDUIT AND WIRING.

GD2. THE BUILDING WILL NEED TO BE KEPT OPERATIONAL FOR THE DURATION OF THE PROJECT. EXISTING LIGHTING SHALL BE NOT REMOVED UNTIL NEW LIGHTING IS INSTALLED AND OPERATIONAL.

| NO. | DESCRIPTION | DATE | BY |
|-----|-----------------------|--------------|----|
| 2 | ISSUED FOR TENDER | AUGUST 2, 17 | RV |
| 1 | ISSUED FOR 99% REVIEW | JULY 14, 17 | RV |
| 0 | ISSUED FOR REVIEW | APRIL 6, 17 | RV |

REVISIONS

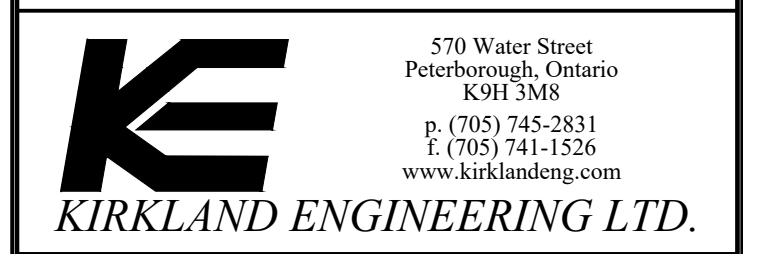
Kirkland Engineering Ltd BCIN: 28857



NOT TO BE USED FOR CONSTRUCTION UNLESS SIGNED BY THE ENGINEER.

THIS DRAWING IS AN INSTRUMENT OF PROFESSIONAL SERVICE FOR USE EXCLUSIVELY ON THIS PROJECT. RE-USE OF ANY PORTION OF THIS DOCUMENT IS PROHIBITED.

Copyright 2017 Kirkland Engineering Ltd



PROJECT

**Exterior/Interior Lighting
Warkworth Institution
Stores Building**

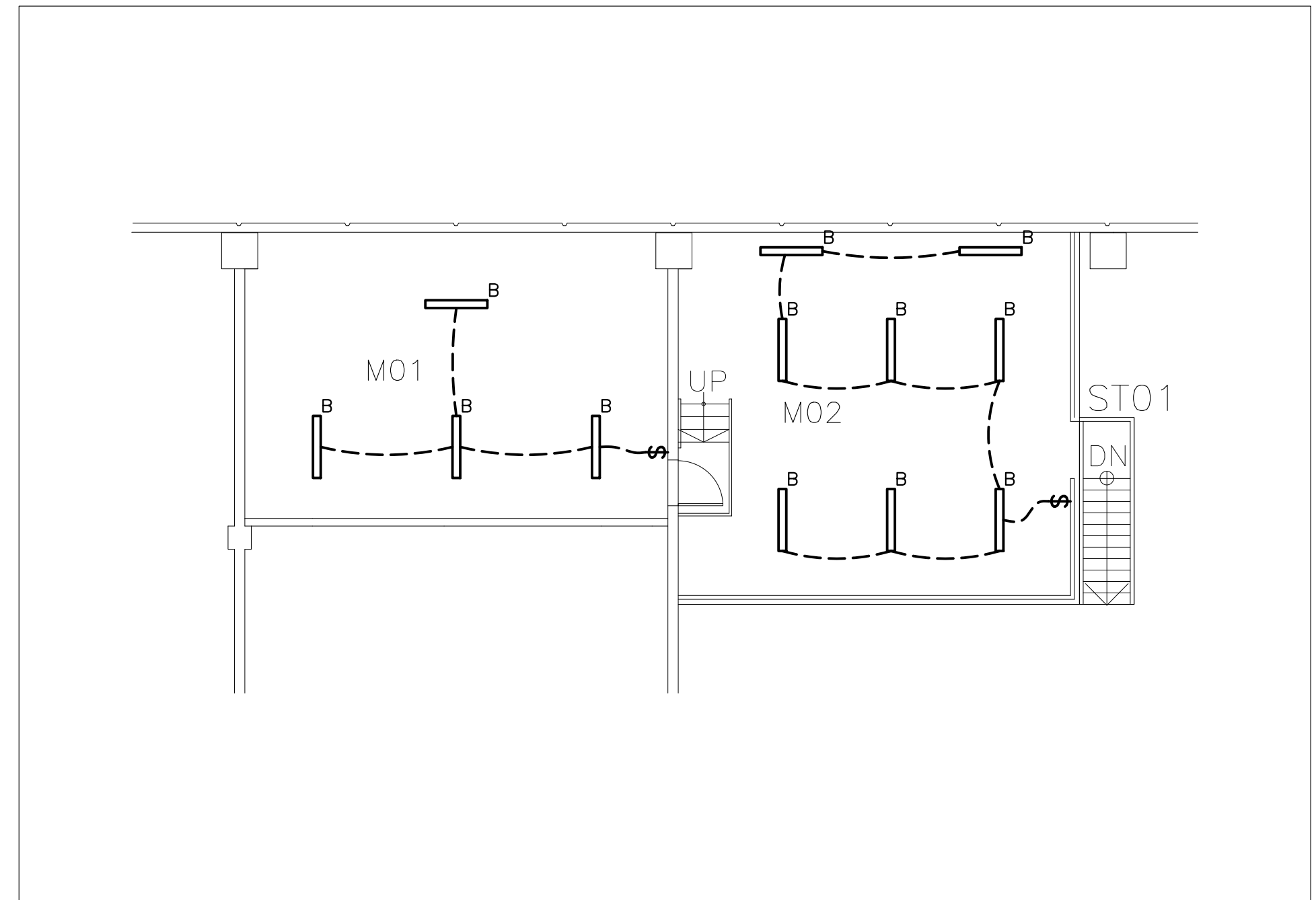
Warkworth, Ontario

TITLE

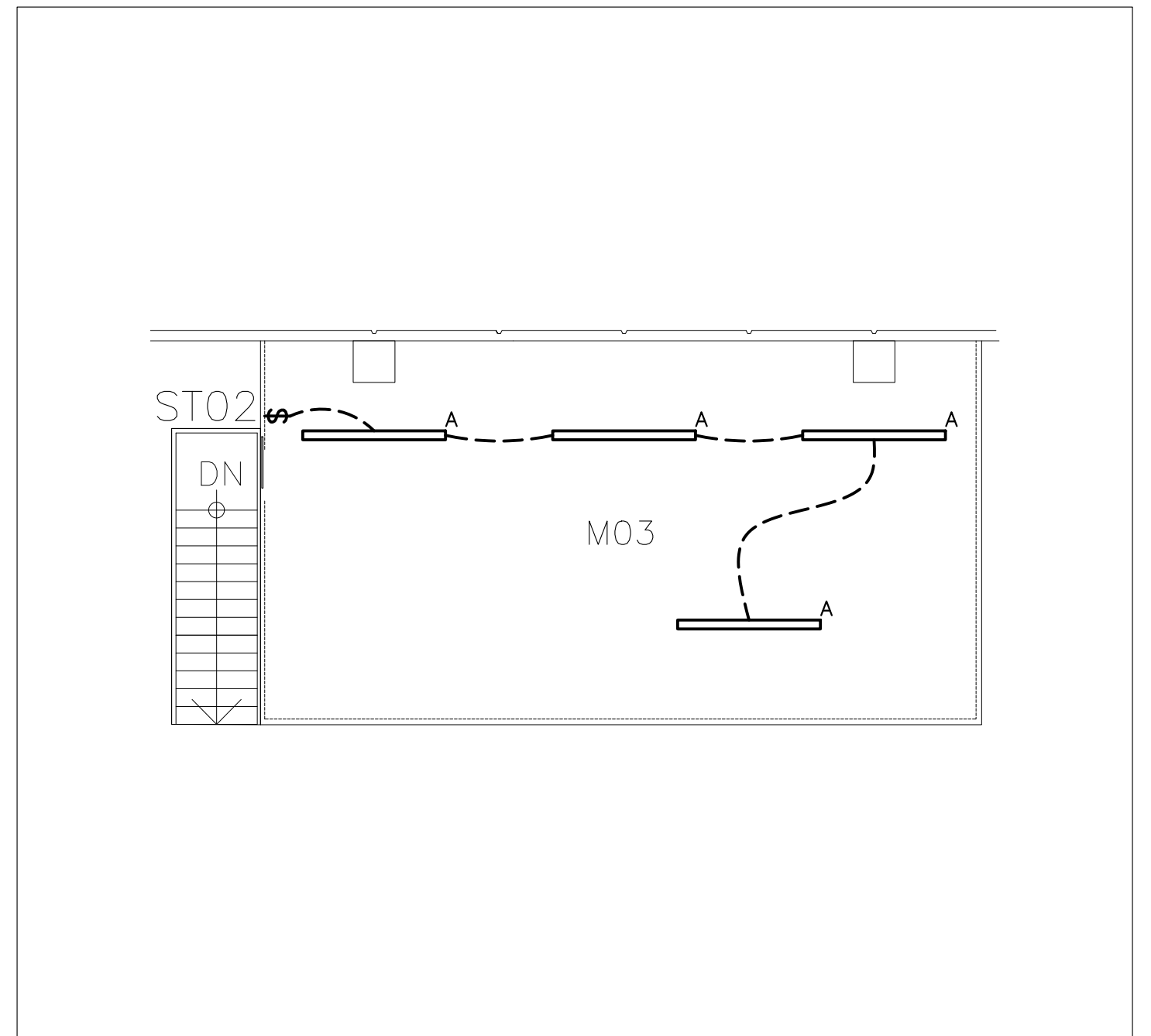
DEMOLITION LIGHTING PLAN

| DESIGN | RJV | SCALE AS NOTED |
|----------|------|----------------|
| DRAWN | KER | DWG NO. |
| CHECKED | RJV | E1 |
| APPROVED | RJV | |
| PROJECT | 5973 | |

1 LIGHTING FLOOR PLAN
SCALE: 1:100



2 WAO4 GENERAL STORES BLDG MEZZANINE M01 & M02 LIGHTING PLAN
SCALE: 1:100



3 WAO4 GENERAL STORES BUILDING MEZZANINE M03 LIGHTING PLAN
SCALE: 1:100

| | |
|---|--|
| A | 8' LONG FLUORESCENT INDUSTRIAL TURRET C/W 2 8' LONG T12 LAMPS. |
| B | 4' LONG INDUSTRIAL TURRET FIXTURE C/W 2 X 32W LAMP T8 |
| C | 1'x4' SURFACE MOUNTED FLOURESCENT C/W 2x32W T8 LAMPS. |
| D | 1'x4' RECESSED FLOURESCENT C/W 2x32W T8 LAMPS. |
| F | 1'x4' FLUORESCENT VAPOUR TIGHT FIXTURE C/W 2x32W T8 LAMPS |
| G | 2'x4' RECESSED FLUORESCENT C/W 4x32W T8 LAMPS. |
| H | INCANDESCENT SURFACE MOUNTED FIXTURE C/W 1x100W A-LAMP. |
| J | SURFACE MOUNTED FLOURESCENT FIXTURE C/W 2x40W T12 LAMPS. |
| K | NOT USED |
| L | SURFACE MOUNTED INCANDESCENT 2x60W A-LAMP |
| M | SURFACE WRAP 2x32WxT8 |
| N | PENDANT MOUNTED HID FIXTURE C/W 400W METAL HALIDE LAMP. |
| P | WALL MOUNTED FLOURESCENT C/W 2x32W T8 LAMPS. |

3 EXISTING LIGHT FIXTURE SCHEDULE
SCALE: 1:100