

## Questions and Answers

No./N°

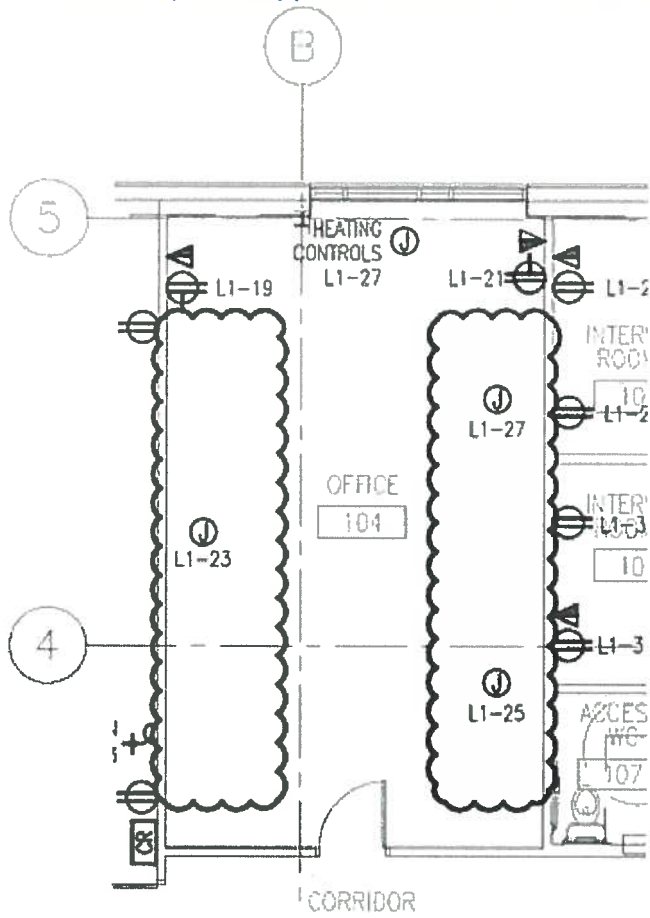
1

Project Description / Description de projet <b>Solicitation No. 17-22066: Furniture for the National Research Council U-72 Uplands</b>		
Solicitation No./ N° de sollicitation <b>17-22066</b>	Project No./N° de projet	W.O. No./N° d'ordre de travail
Departmental Representative / Représentant Ministériel <b>Steve Cassidy</b>	Date <b>Sept. 26, 2017</b>	
<p><b>Questions:</b></p> <ol style="list-style-type: none"> <li>1. Do you have a floorplan that shows how the electrical will be fed to the stations (i.e. power pole or base feed)</li> <li>2. Do you have a floorplan that shows the locations of the electrical outlets within the workstation.</li> <li>3. The drawing provided is not clear enough to read</li> </ol>	<p><b>Answers:</b></p> <ol style="list-style-type: none"> <li>1. Pole Fed (see drawing on page of attachment)</li> <li>2. Please refer to the furniture spec. and drawing below it outlines clearly the location of the electrical outlets within the workstations.</li> <li>3. It is clear on my end, but maybe it does not come through the B/S system clearly. (please send me a request by email to <a href="mailto:Steve.Cassidy@nrc-cnrc.gc.ca">Steve.Cassidy@nrc-cnrc.gc.ca</a>) and I will send it directly by email.</li> </ol>	

**Upon request, the text above can be provided in French.**



1. Ceiling feed Electrical:  
Existing three (3) junction boxes in ceiling space c/w 15A, 120V connection for new furniture poles supplied and installed under this contract.



2. The specification gives a description of type and location of the cubicle electrical outlets

10 Ceiling Feeds:

- 1 Provide ceiling poles when required and where indicated. Finish to match metal finish on exposed panel trim.
  - 1 Five station or less clusters require one ceiling pole, with power and a minimum data capacity of 24 CAT6.
    - 1 ~~With metal separation between power and data.~~
  - 2 Five to eight station clusters require two ceiling poles. One power ceiling feed pole and one data pole with minimum of 24 CAT6 capacity.
- 2 Power pole widths shall be equal to the thickness of the panels.
- 3 Power pole shall be capable of being opened along the length of the vertical of the pole to permit lay-in of wiring.

11 Wiring:

- 1 Wiring for panel systems shall have preconnectorized cable assemblies for connection of duplex receptacles and meet the following requirements:
  - 1 Voltage: 120/208 VAC
  - 2 Circuit capacity: three circuits with not less than six wires providing one circuit having the common ground and having its own neutral.
  - 3 One circuit for dedicated isolated use of the computer
  - 4 Tamper proof connectors.
  - 5 Flexible cable to the Canadian Electrical Code, approved for use in systems furniture. The complete electrical system in the panels and the components to meet CSA-C22.2, No. 23.

12 Receptacles:

- 1 Manufacturer's standard single sided duplex style, 15 Amp CSA configuration 5-15R configuration.

- 2 Coordinate actual locations in the panels on site by the Departmental Representative's Representative.
- 3 Provide two duplex receptacles for general use and one isolated dedicated duplex per workstation, receptacles may be a combination of duplex or simplex providing six (6) plug-in locations.
  - 1 One general use duplex outlet along spine.
  - 2 One general use duplex outlet and one isolated dedicated duplex outlet under the electric height adjustable table.

