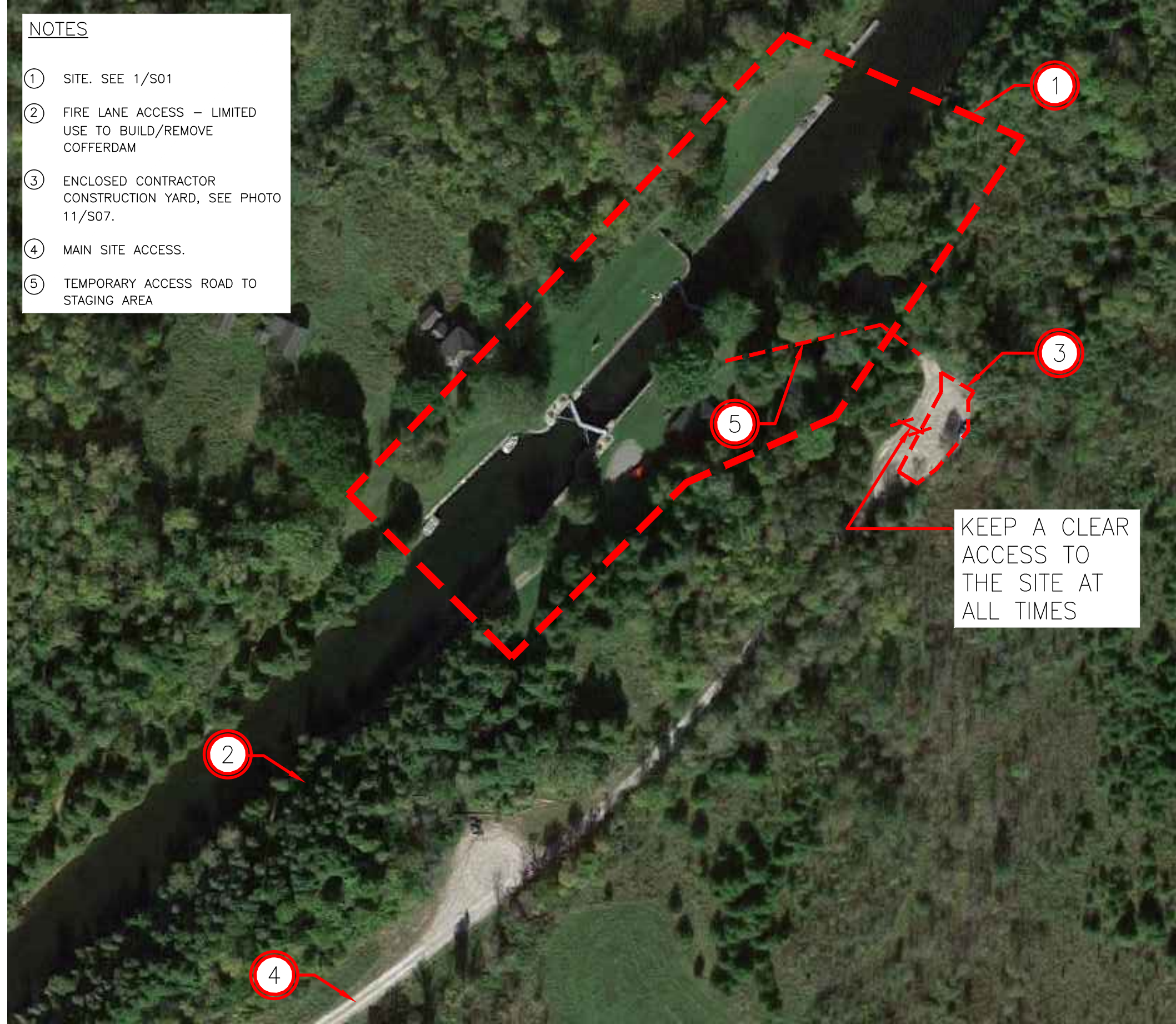


- NOTES
- 1 SITE. SEE 1/S01
  - 2 FIRE LANE ACCESS – LIMITED USE TO BUILD/REMOVE COFFERDAM
  - 3 ENCLOSED CONTRACTOR CONSTRUCTION YARD, SEE PHOTO 11/S07.
  - 4 MAIN SITE ACCESS.
  - 5 TEMPORARY ACCESS ROAD TO STAGING AREA



KEY LOCATION PLAN  
SCALE: N.T.S.

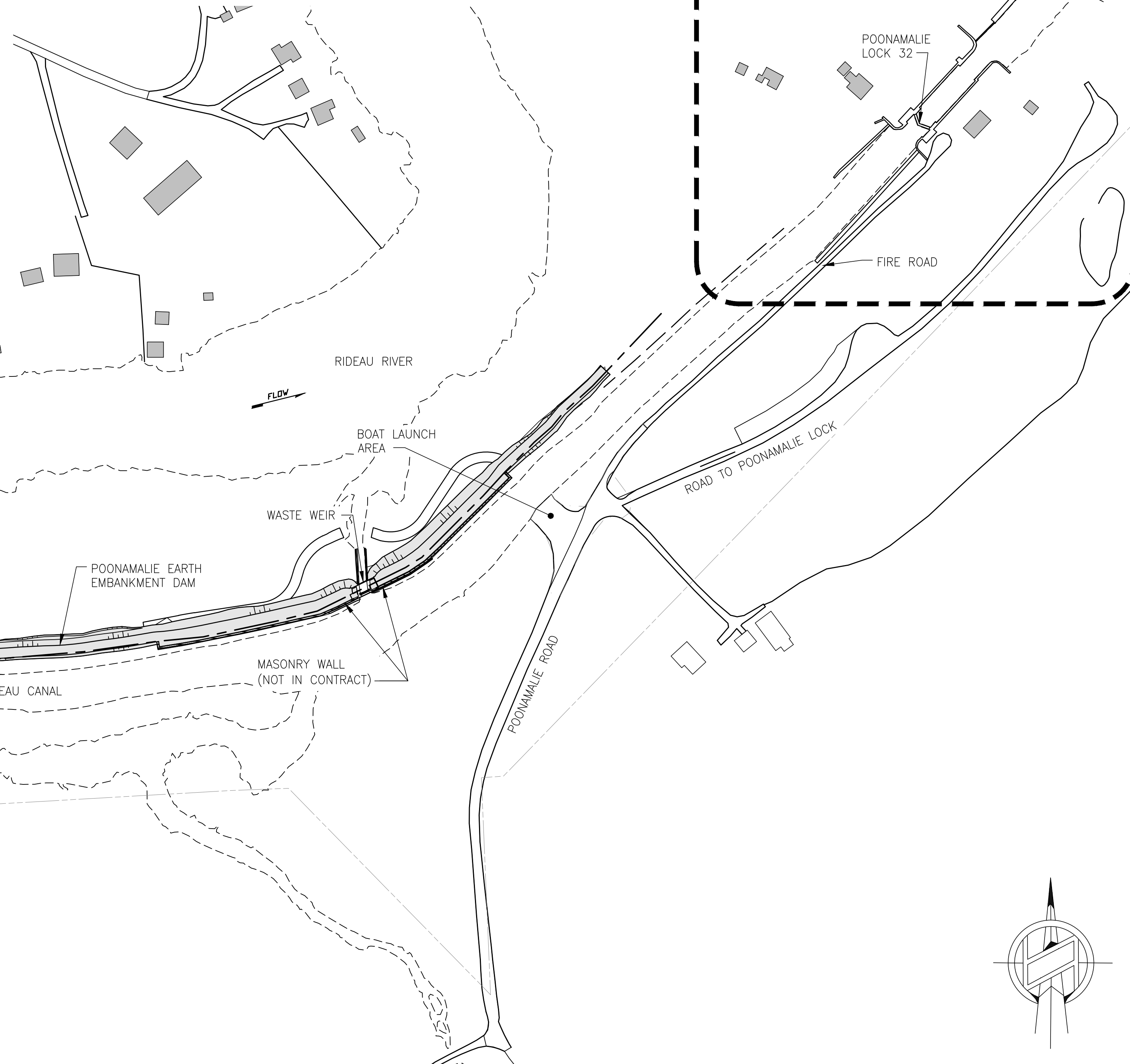
01  
S00

# POONAMALIE LOCK 32

## HERITAGE STONE MASONRY REPAIRS

### DRAWING LIST

- S00 GENERAL SITE OVERVIEW
- S01 GENERAL ARRANGEMENT KEY PLAN
- S02 PLAN
- S03 ELEVATIONS
- S04 SECTIONS AND DETAILS
- S05 SECTIONS AND DETAILS
- S06 PHOTOGRAPHIC DETAILS
- S07 PHOTOGRAPHIC DETAILS



STOP LOGS WILL BE INSTALLED IN INLET CANAL BY PARKS CANADA ON OR BEFORE OCTOBER 26, 2017 TO LOWER WATER LEVEL. PARKS CANADA WILL REMOVE INLET CANAL STOP LOGS BEGINNING APRIL 30, 2018.

GENERAL SITE OVERVIEW  
SCALE: N.T.S.

02  
S00

Canada



17026

17026-S01 DRAWING 1 OF 8

DRAWING NO. DRAWING NAME

### REFERENCE DRAWINGS

NO.	DATE	DESCRIPTION	Drawn by Dessine par	Approved Approuve
3	2017/09/27	AMENDMENT	C.P.	L.M.
2	2017/08/21	ISSUED FOR BID	C.P.	L.M.
1	2017/07/12	100% SUBMISSION	C.P.	L.M.

### REVISIONS

A	B	A Detail number B Sheet number	A Numero de detail B Sur feuille numero
---	---	-----------------------------------	--

Linear dimensions in millimeters Dimensions lineaires en millimetres



PARKS CANADA  
EASTERN ONTARIO FIELD UNIT

Type of Record /  
Type d'enregistrement

Project title / Titre du projet  
**POONAMALIE LOCK 32  
HERITAGE STONE MASONRY REPAIRS**

Drawing title / Titre du dessin

**GENERAL SITE OVERVIEW**

Plot Scale / Echelle  
1:1 (Arch D 24x36 Plot Size)

Drawn by/ Dessine par  
C.P.

Date  
2017/01/11

Field Recording by /  
Releve-Termain par  
L.M. & J.C. & C.P.

Date  
2016/11/21

Approved by / Approuve par  
L.M.

Date  
2017/07/27

Checked by/ Verifie par  
J.C.

Date  
2017/07/27

Project No./ No. du projet  
17026

Asset No.

Sheet No./  
Feuille No.

Drawing Re No./No. du Dessin  
17026-S00-R02

**S00**