

## GENERAL NOTES

## ALUMINUM FRAME

1. ALUMINUM:  
GRADE 6061-T6  
 $f_y = 275\text{ksi}$  (40psi)
  2. WELDING:  
TO BE COMPLETED TO  
REQUIREMENTS OF CSA W59.2.
- WELDERS MUST BE QUALIFIED  
ACCORDING TO CSA W47.2.

	2010/11/01	PRELIMINARY ISSUED FOR REVIEW	
revisions	date	description	
<p>linear dimensions in      Dimensions in inches  imperial                      en imperial</p>			
<p>Client acceptance / Acceptation du client</p> <p>Signature _____ Date _____</p> <p>File No. / No. de dossier _____</p>			



PARKS CANADA  
EASTERN ONTARIO FIELD UNIT

Type of Record /  
Type d'enregistrement  
TYPE

Project title / Titre du projet  
CANOE/KAYAK  
INFRASTRUCTURE  
PROGRAM

Drawing title / Titre du dessin  
DOCK FRAME  
PLAN AND SECTIONS

Scale / Estimate	
SCALE	
Drawn by / Destination	Date
W.J.L.	XXXXXX
Field Recording by /	Date
Relevé-Termoir par	
Approved by / Approve par	Date
Checked by / Vérifié par	

Project No./No. du projet	Asset No. XXXXX	Sheet No./ Feuille No.
Drawing Re No./No. du Dessin		C1

FOR GENERAL NOTES  
REFER TO DRWG C1

	2010/11/01	PRELIMINARY ISSUED FOR REVIEW
	date	description
revisions		

Linear dimensions in imperial      Dimensions lineaires en imperial

Client Acceptance / Acception du client

Signature \_\_\_\_\_ Date \_\_\_\_\_  
File No. / No. de dossier \_\_\_\_\_

Parcs Canada Parks Canada

PARKS CANADA  
EASTERN ONTARIO FIELD UNITType of Record /  
Type d'enregistrement

TYPE

Project title / Titre du projet  
**CANOE/KAYAK  
INFRASTRUCTURE  
PROGRAM**

Drawing title / Titre du dessin

## PRE-INSTALLED HOLES PLAN AND SECTIONS

Scale / Echelle

Drawn by/ Dessine par	Date
W.J.L.	XXXX

Date \_\_\_\_\_

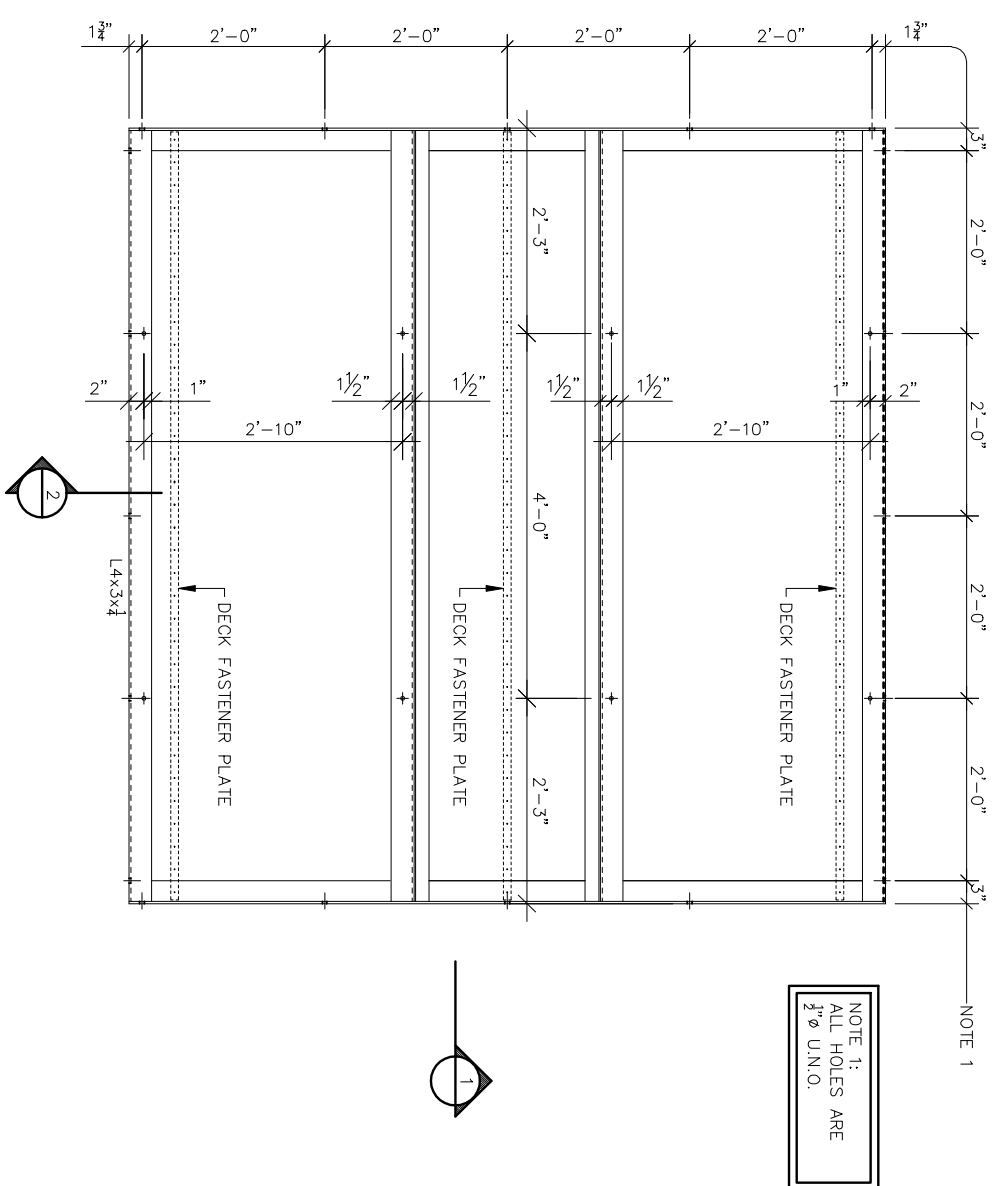
[illegible]

Checked by/ Verifie pa

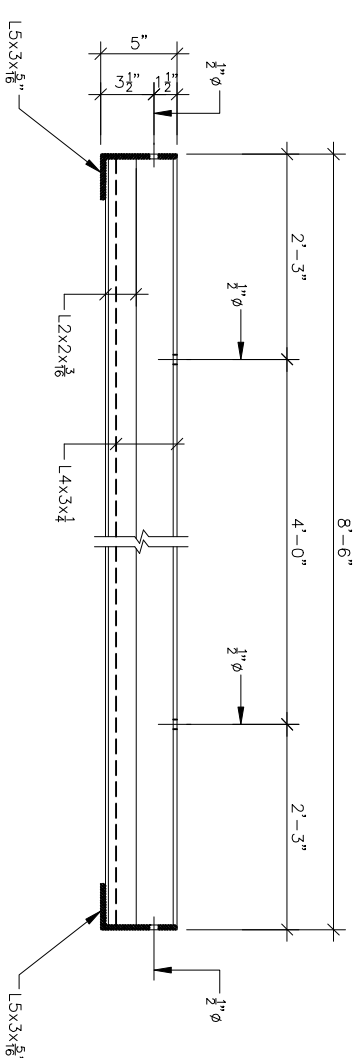
Project No./ No. du projet	Asset No.
----------------------------	-----------

	X
--	---

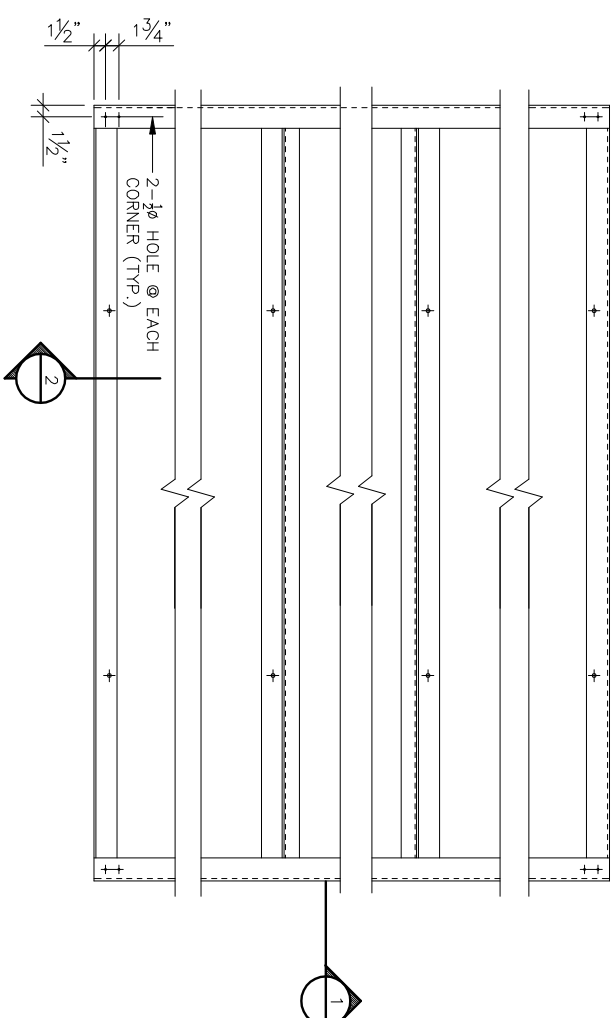
C2



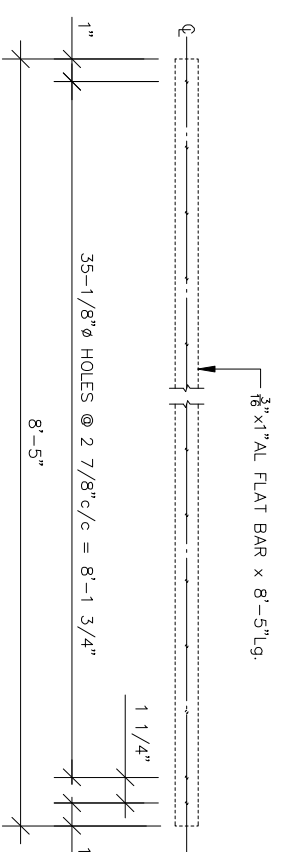
**PLAN PRE-DRILLED HOLES - TOP VIEW**



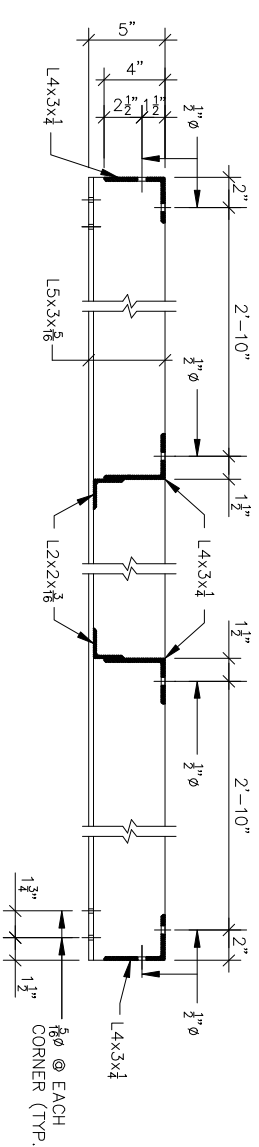
## SECTION 1



**PARTIAL PLAN PRE-DRILLED HOLES - BOTTOM VIEW**



**PLAN - DECK FASTENER PLATE**  
QUANTITY = 228



## SECTION 2

GENERAL NOTES

ASSEMBLY

1. WOOD:

NON-STRUCTURAL:  
EASTERN WHITE CEDAR  
SKIRT – ROUGH SAWN  
DECK – PLANED

STRUCTURAL:

JOISTS, POSTS, & RAILINGS  
WESTERN RED CEDAR No1/No2

2. METAL:

METAL BRACKETS ARE TO BE  
HOT DIPPED GALVANIZED.

3. FASTENERS:

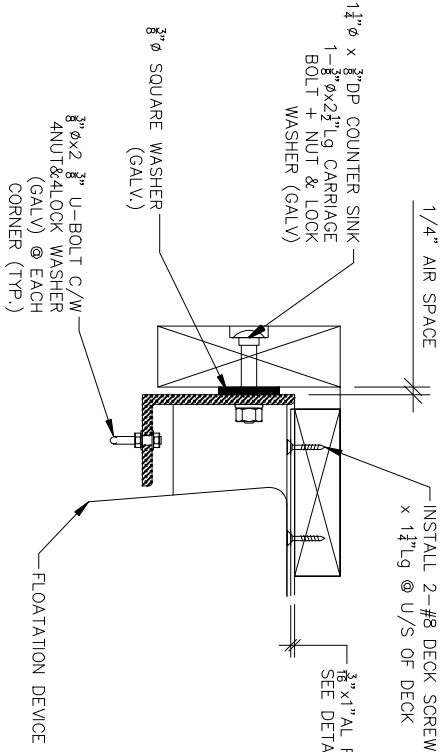
BOLTS, NUTS, WASHERS AND  
NAILS ARE TO BE HOT DIPPED  
GALVANIZED U.N.O.

DECK SCREWS ARE TO BE  
COATED

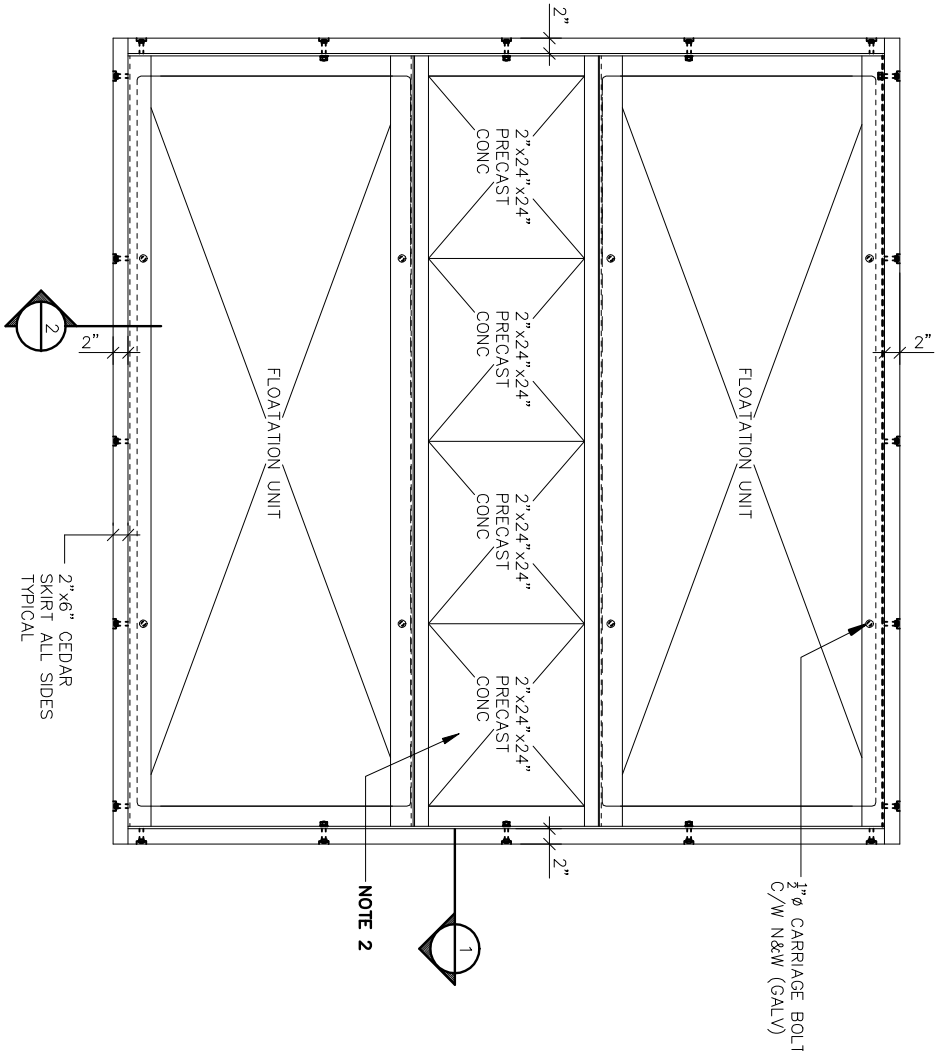
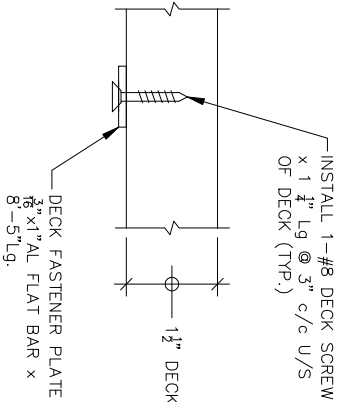
4. DOCK FLOATS:

SIZE: 36"x96"x12"Dp.  
BUOYANCY: 1330lbs MIN

DETAIL A

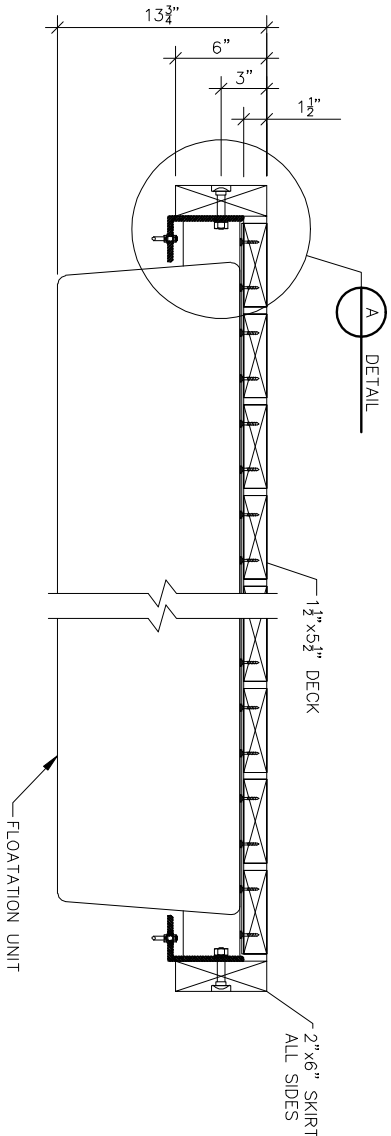


DETAIL B



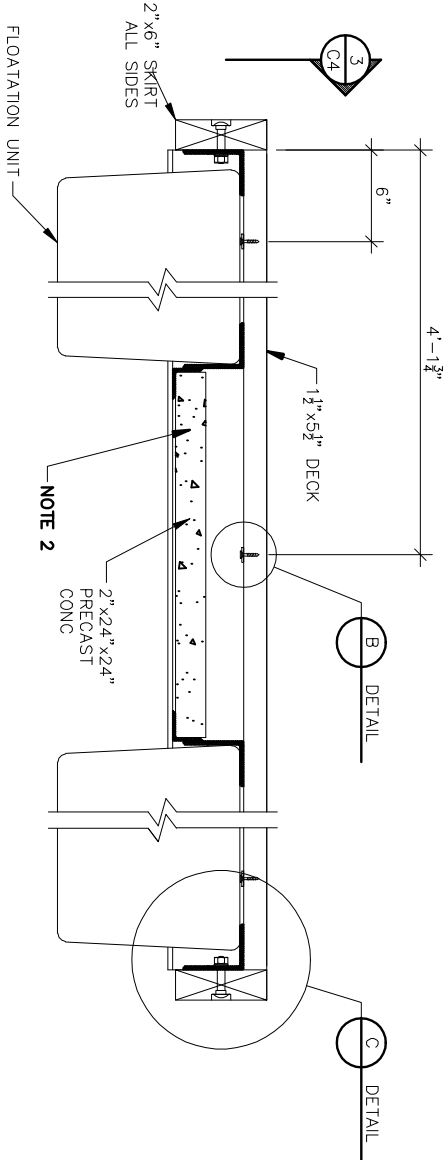
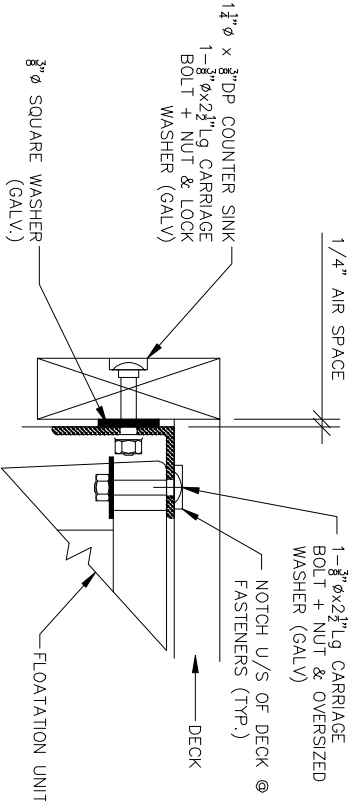
PLAN – TOP VIEW

NOTE 2:  
DO NOT INSTALL CONCRETE  
PATIO STONE UNDER LOCATION  
OF RAMP (TYP.)



SECTION 1

DETAIL C



SECTION 2



PARKS CANADA  
ESTERN ONTARIO FIELD UNIT  
Type of Record /  
Type d'enregistrement  
TYPE

Project title / Titre du projet  
CANOE/KAYAK  
INFRASTRUCTURE  
PROGRAM

Drawing title / Titre du dessin  
ASSEMBLY

PLAN, SECTIONS & DETAILS

Scale / Echelle

SCALE

Drawn by/ Dessiné par

W.J.L.

Field Recording by /

Releve-Témoin par

Approved by / Approuvé par

Checked by/ Vérifié par

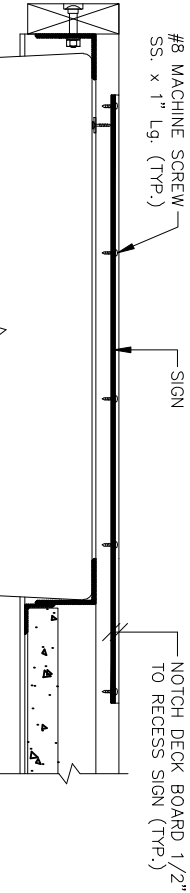
Project No./ No. du projet  
Asset No.  
XXXXX

Drawing Re No./No. du Dessin

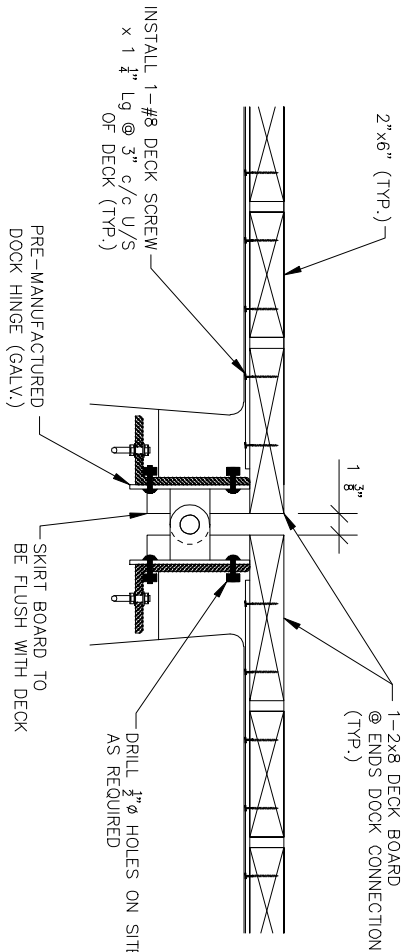
Sheet No./  
Feuille No.  
C3

FOR GENERAL NOTES  
REFER TO DRWG C3

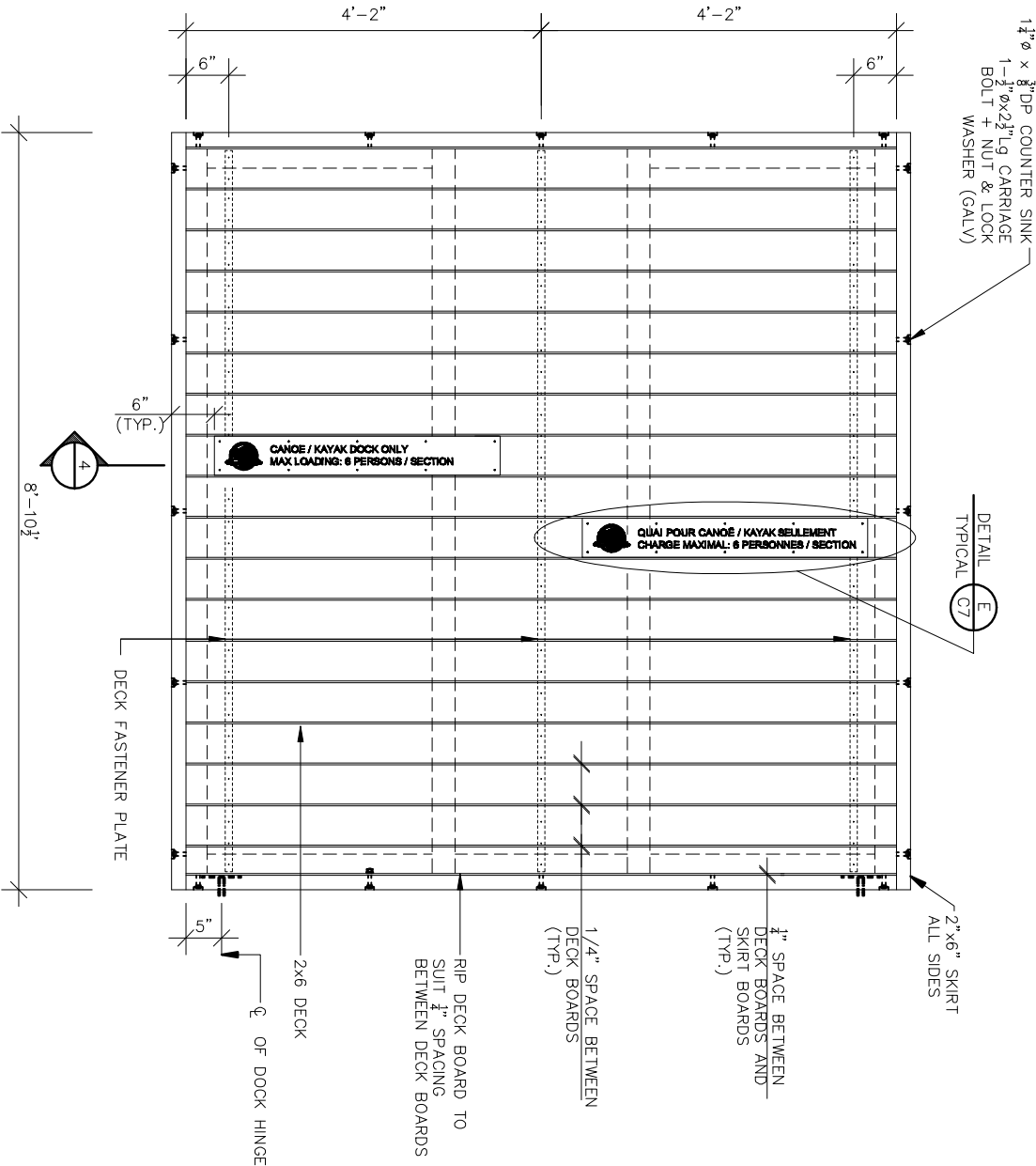
DOCK MATERIAL LIST (76 DOCK UNITS)				
ITEM	DESCRIPTION	SIZE / LENGTH	QTY/DOCK	TOTAL
<b>WOOD — EASTERN WHITE CEDAR</b>				
2x6 PLANED	1 1/2" x 5 1/2"	8'-4" Lg.	18	1292
2x8 PLANED	1 1/2" x 7 1/4"	8'-4" Lg.	1	76
2x6 ROUGH	2" x 6"	8'-10" Lg.	3	228
<b>FASTENERS</b>				
3/8" Ø — 16	CARRIAGE BOLT (GALV.)	2 1/2" Lg.	28	2128
3/8" Ø — 16	CARRIAGE BOLT (GALV.)	1 1/2" Lg.	8	
3/8" Ø — 16	NUT (GALV.)		44	3344
3/8" Ø — 16	U-BOLT (GALV.)	2 3/8" Lg.	4	304
3/8" Ø	OVERSIZED WASHER (GALV.)	1 3/4" O.D.	8	608
3/8" Ø	LOCK WASHER (GALV.)		44	3344
3/8" Ø	SQUARE WASHER (GALV.)	2" x 1/4" x 2"	20	3344
# 8	DECK SCREW (COATED)	1 1/4" Lg.	102	7752
<b>DOCK HARDWARE</b>				
	MALE T CONNECTOR (GALV.)		1	76
	FEMALE T CONNECTOR (GALV.)		1	76
	CONNECTOR PIN + C.P. (GALV.)		2	152
	HATCH PULL (PLATED)		8	608
<b>CHAIN &amp; SHACKLES</b>				
3/2" Ø	CHAIN GRADE 80	36'-0" Lg.	0.072 DRUM	6 DRUMS
1/4" Ø	SHACKLE (GALV.)		6	456
<b>FLOATS</b>				
36"x96"x12" DP.	FOAM FILLED		2	152
<b>CONCRETE ANCHOR</b>				
550 Lbs			3	228
24"x2"	PATIO STONE	24" Lg.	4	304



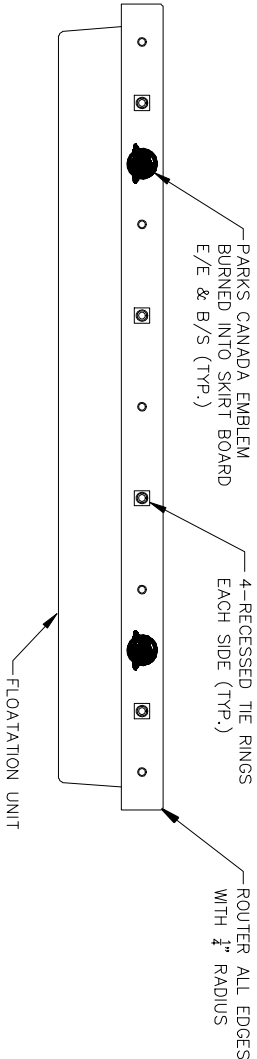
SECTION 4



DETAIL D

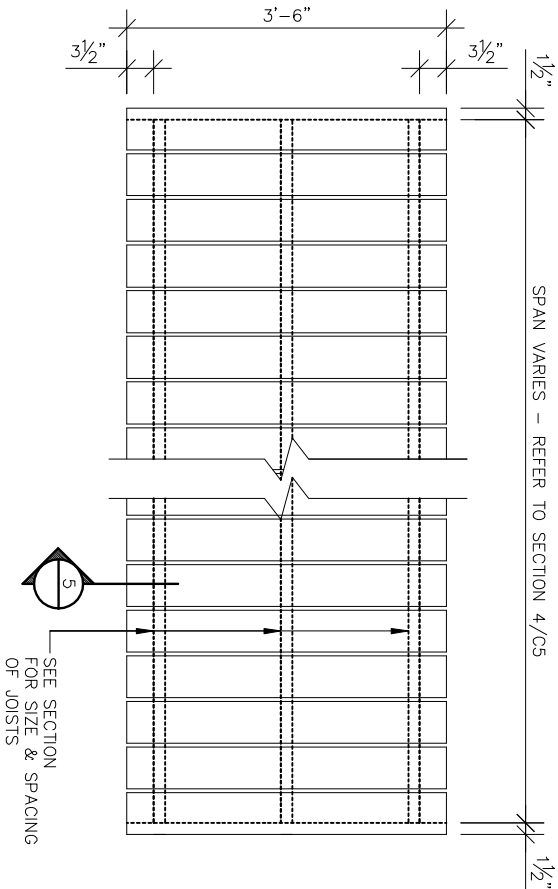


PLAN — DECK CONSTRUCTION TOP VIEW

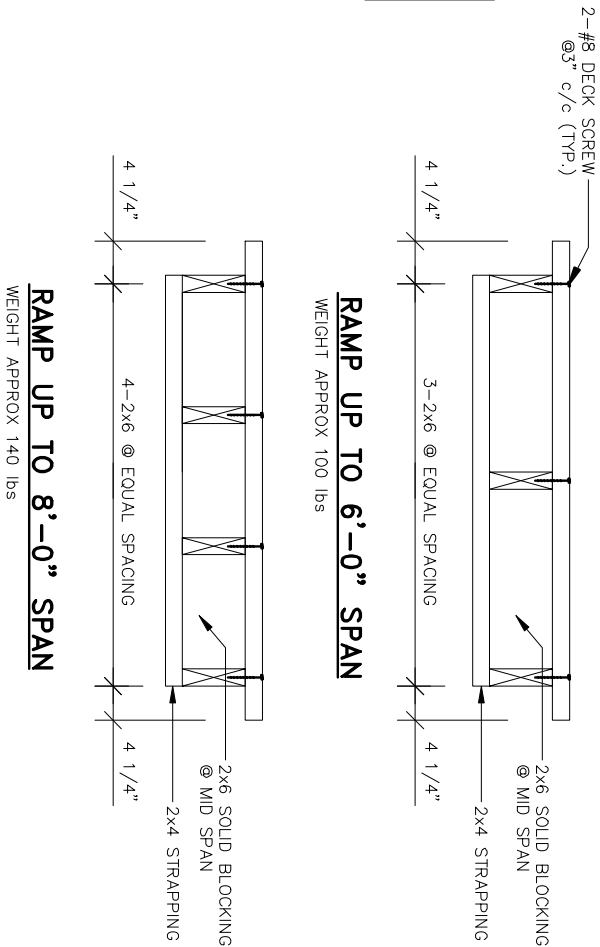


SECTION 3

Parks Canada ESTIEN ONIHO FIELD UNIT	
Type of Record / Type d'enregistrement	
Project title / Titre du projet TYPE	
CANOE/KAYAK INFRASTRUCTURE PROGRAM	
Drawing title / Titre du dessin ASSEMBLY PLAN, SECTIONS & DETAILS	
SCALE Scale / Échelle	
Drawn by/ Dessiné par W.J.L.	Date XXXXX
Field Recording by / Releve-Témoin par	Date XXXXX
Approved by / Approuvé par	Date XXXXX
Checked by/ Vérifié par	Date XXXXX
Project No./ No. du projet XXXXX	Asset No. XXXXX
Drawing Re No./No. du Dessin	Sheet No./ Feuille No. C4



**NOTE 3:**  
RAMPS WHERE WALKING SURFACE IS GREATER THAN 2'-0" ABOVE GROUND LEVEL REQUIRE GUARD RAIL. REFER TO DRAWING C6 FOR GENERAL DETAIL

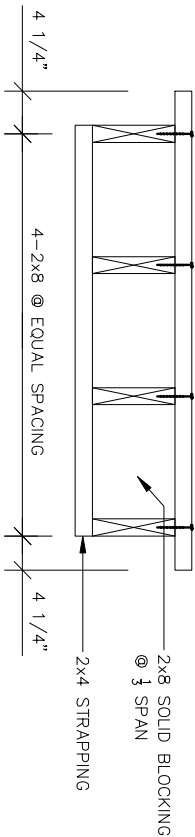


**RAMP UP TO 6'-0" SPAN**

WEIGHT APPROX 100 lbs

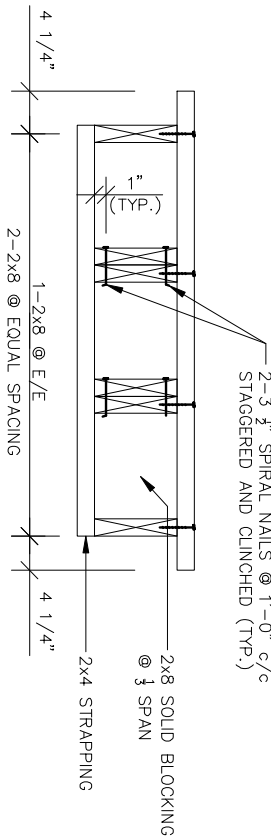
**RAMP UP TO 8'-0" SPAN**

WEIGHT APPROX 140 lbs



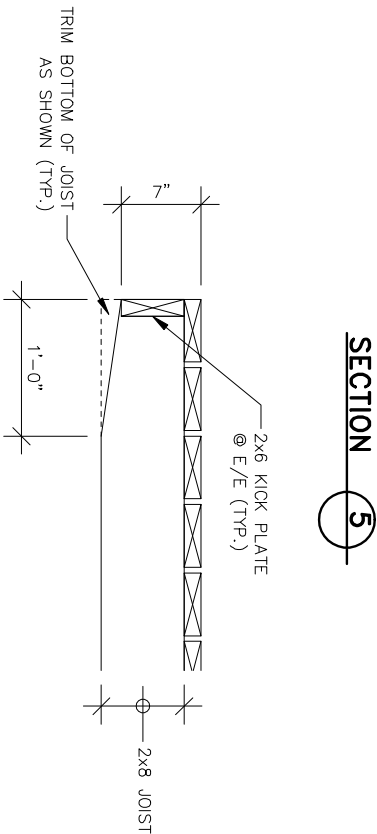
**RAMP UP TO 10'-0" SPAN**

WEIGHT APPROX 185 lbs



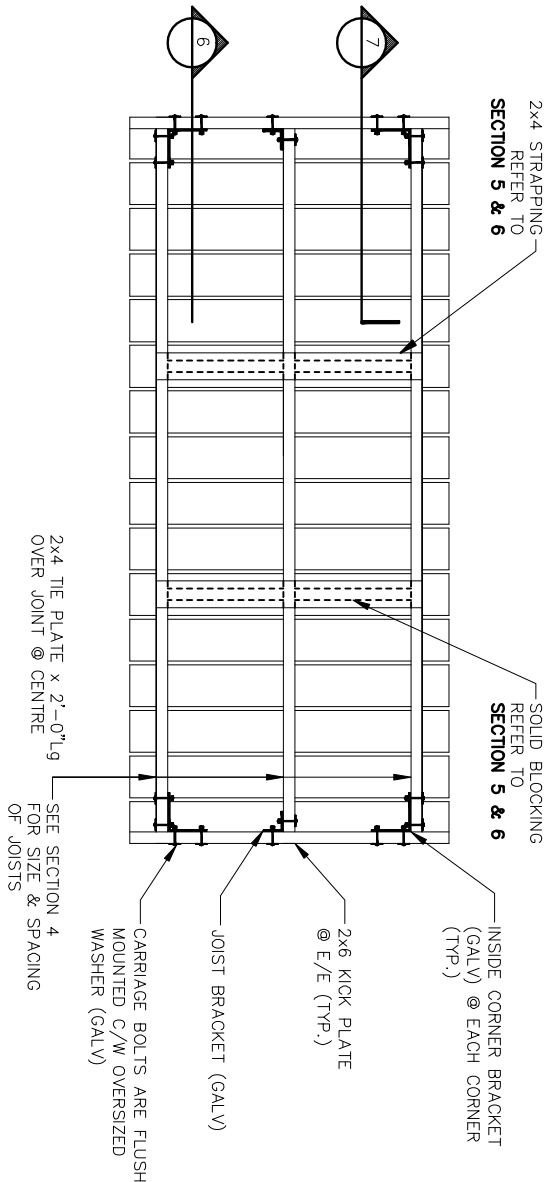
**RAMP UP TO 12'-0" SPAN**

WEIGHT APPROX 255 lbs

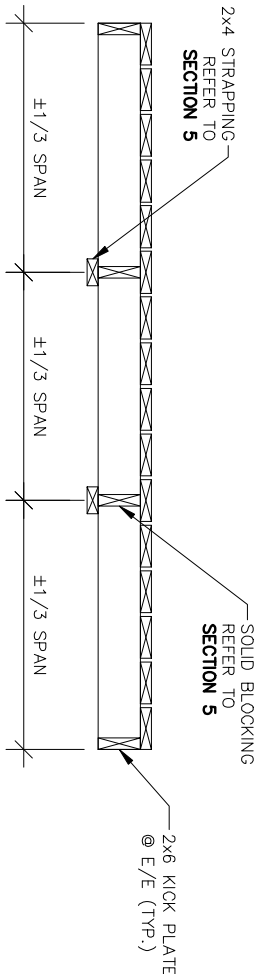


**SECTION 7**

**PLAN – TOP VIEW**



**PLAN – BOTTOM VIEW**



**SECTION 6**

FOR GENERAL NOTES  
REFER TO DRWG C3

--	--

--	--

1	2010/11/01	PRELIMINARY ISSUED FOR REVIEW
---	------------	-------------------------------

no.	date	description
-----	------	-------------

Linear dimensions in imperial	Dimensions lineaires en imperial
----------------------------------	-------------------------------------



PARKS CANADA  
ESTRIEN ONTARIO FIELD UNIT

Type of Record / Type d'enregistrement	TYPE
---	------

Project title / Titre du projet	CANOE/KAYAK INFRASTRUCTURE PROGRAM
---------------------------------	--

Drawing title / Titre du dessin

RAMPS & SIGNS

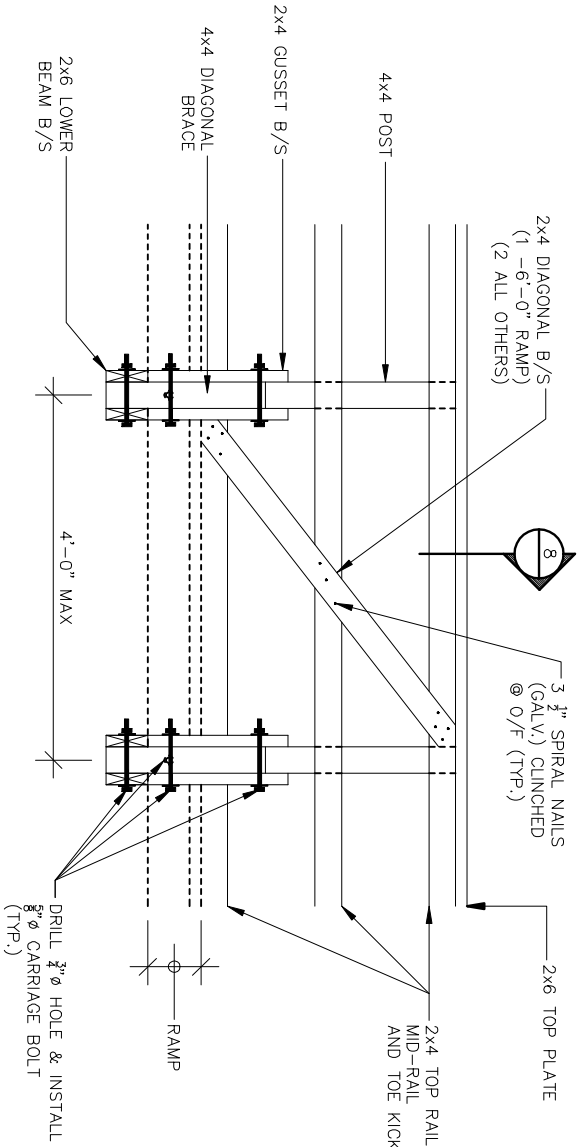
Scale / Echelle	
Drawn by/ Dessiné par	W.L.L.
Field Recording by / Releve-Terminé par	
Approved by / Approuvé par	
Checked by/ Vérifié par	

Project No./ No. du projet	Asset No. XXXXX	Sheet No./ Feuille No.
Drawing Re No./No. du Dessin		C5

FOR GENERAL NOTES  
REFER TO DWG C3

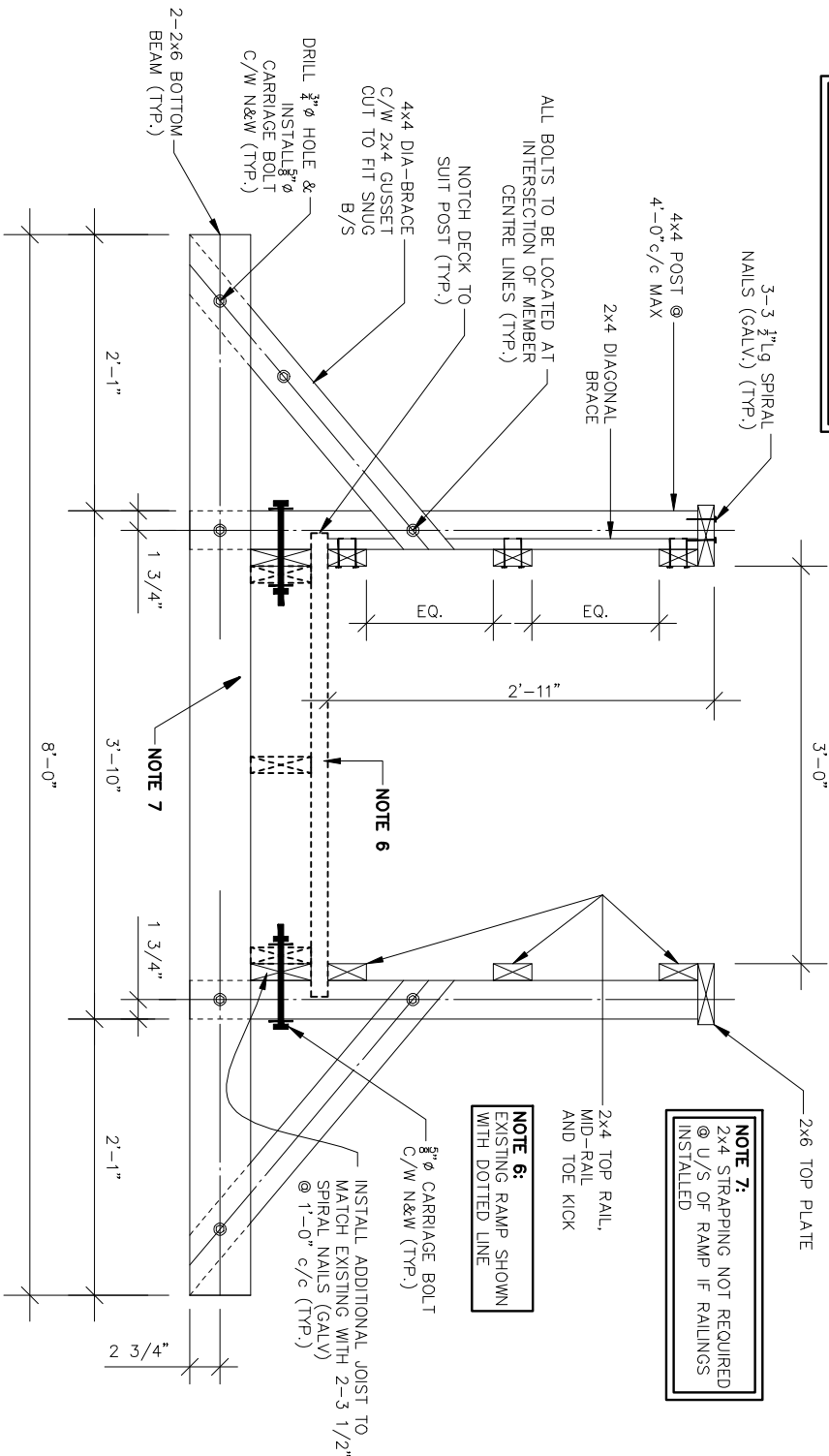
RAMP MATERIAL LIST

ITEM	DESCRIPTION	SIZE/ LENGTH	QTY/DOCK	TOTAL
6'-0" SPAN				
EASTERN WHITE CEDAR – UNGRADED				
2x6 PLANED	1 1/2" x 5 1/2"	8'-0" Lg.	6.5	–
WESTERN RED CEDAR – GRADE No.1/No.2				
2x6 PLANED	1 1/2" x 5 1/2"	12'-0" Lg.	1.5	–
2x6 PLANED	1 1/2" x 5 1/2"	8'-0" Lg.	1	–
2x4 PLANED	1 1/2" x 3 1/2"	8'-0" Lg.	1	–
FASTENERS				
3/8" Ø – 16	CARRIAGE BOLT (GALV.)	2 1/2" Lg.	32	–
3/8" Ø – 16	NUT (GALV.)		32	–
3/8" Ø	OVERSIZED WASHER (GALV.)		32	–
# 8	DECK SCREW (COATED)	3" Lg.	100	–
HARDWARE				
	INSIDE CORNER		4	–
	JOIST CORNER		2	–
8'-0" SPAN				
EASTERN WHITE CEDAR				
2x6 PLANED	1 1/2" x 5 1/2"	8'-0" Lg.	8.5	–
WESTERN RED CEDAR				
2x6 PLANED	1 1/2" x 5 1/2"	8'-0" Lg.	6	–
2x4 PLANED	1 1/2" x 3 1/2"	12'-0" Lg.	1	–
FASTENERS				
3/8" Ø – 16	CARRIAGE BOLT (GALV.)	2 1/2" Lg.	40	–
3/8" Ø – 16	NUT (GALV.)		40	–
3/8" Ø	OVERSIZED WASHER (GALV.)		40	–
# 8	DECK SCREW (COATED)	3" Lg.	160	–
DOCK HARDWARE				
	INSIDE CORNER		4	–
	JOIST CORNER		4	–
10'-0" SPAN				
EASTERN WHITE CEDAR				
2x6 PLANED	1 1/2" x 5 1/2"	8'-0" Lg.	10.5	–
WESTERN RED CEDAR				
2x8 PLANED	1 1/2" x 7 1/4"	10'-0" Lg.	4	–
2x8 PLANED	1 1/2" x 7 1/4"	8'-0" Lg.	2	–
2x4 PLANED	1 1/2" x 3 1/2"	8'-0" Lg.	1	–
FASTENERS				
3/8" Ø – 16	CARRIAGE BOLT (GALV.)	2 1/2" Lg.	40	–
3/8" Ø – 16	NUT (GALV.)		40	–
3/8" Ø	OVERSIZED WASHER (GALV.)		40	–
# 8	DECK SCREW (COATED)	3" Lg.	190	–
HARDWARE				
	INSIDE CORNER		4	–
	JOIST CORNER		4	–
12'-0" SPAN				
EASTERN WHITE CEDAR				
2x6 PLANED	1 1/2" x 5 1/2"	8'-0" Lg.	12.5	–
WESTERN RED CEDAR				
2x8 PLANED	1 1/2" x 7 1/4"	12'-0" Lg.	6	–
2x8 PLANED	1 1/2" x 7 1/4"	8'-0" Lg.	2	–
2x4 PLANED	1 1/2" x 3 1/2"	8'-0" Lg.	1	–
FASTENERS				
3/8" Ø – 16	CARRIAGE BOLT (GALV.)	2 1/2" Lg.	32	–
3/8" Ø – 16	NUT (GALV.)		8	–
3/8" Ø	OVERSIZED WASHER (GALV.)		40	–
# 8	DECK SCREW (COATED)	3" Lg.	220	–
3 1/2"	SPIRAL NAIL (GALV.)	3 1/2" Lg.	48	–
HARDWARE				
	INSIDE CORNER		4	–
	JOIST CORNER		4	–



SIDE ELEVATION – GUARD RAIL

**NOTE 4:**  
ALL WOOD MEMBERS FOR SIDE GUARD  
MUST BE  
WESTERN RED CEDAR No.1/No. 2



SECTION 8

1	2010/11/01 PRELIMINARY ISSUED FOR REVIEW
no.	date
revisions	
Linear dimensions in Imperial	
Dimensions lineaires en imperial	
Parcs Canada Parcs Canada	



PARCS CANADA  
ESTRIEN ONTARIO FIELD UNIT

Type of Record / Type d'enregistrement
Project title / Titre du projet

CANOE/KAYAK  
INFRASTRUCTURE  
PROGRAM

Drawing title / Titre du dessin

RAMPS & SIGNS

Scale / Echelle

SCALE

Drawn by/ Dessiné par

W.J.L.

Field Recording by /

Releve-Terminé par

Approved by / Approuvé par

Checked by/ Vérifié par

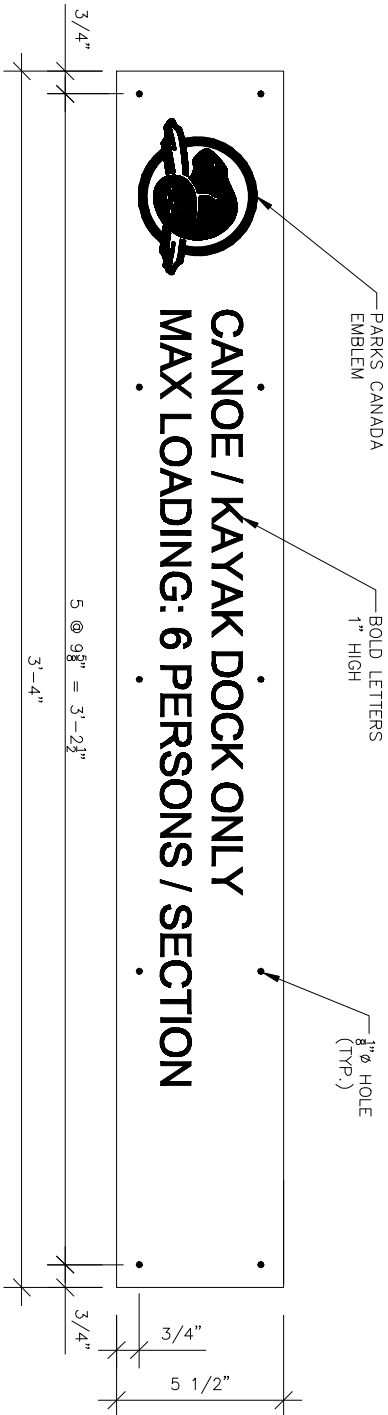
Project No./ No. du projet

Asset No.  
XXXXX

Drawing Re No./No. du Dessin

C6

FOR GENERAL NOTES  
REFER TO DRWG C3



DETAIL  
ENGLISH SIGN



QUAI POUR CANOE / KAYAK SEULEMENT  
CHARGE MAXIMAL: 6 PERSONNES / SECTION

DETAIL  
FRENCH SIGN



PARKS CANADA  
ESTRIEN ONTARIO FIELD UNIT

Type of Record /  
Type d'enregistrement  
TYPE

Project title / Titre du projet  
CANOE/KAYAK  
INFRASTRUCTURE  
PROGRAM

Drawing title / Titre du dessin

RAMPS & SIGNS

Scale / Echelle

SCALE

Drawn by/ Dessiné par

W.J.L.

Field Recording by /  
Releve-Terminé par

Approved by / Approuvé par

Checked by/ Vérifié par

Project No./ No. du projet

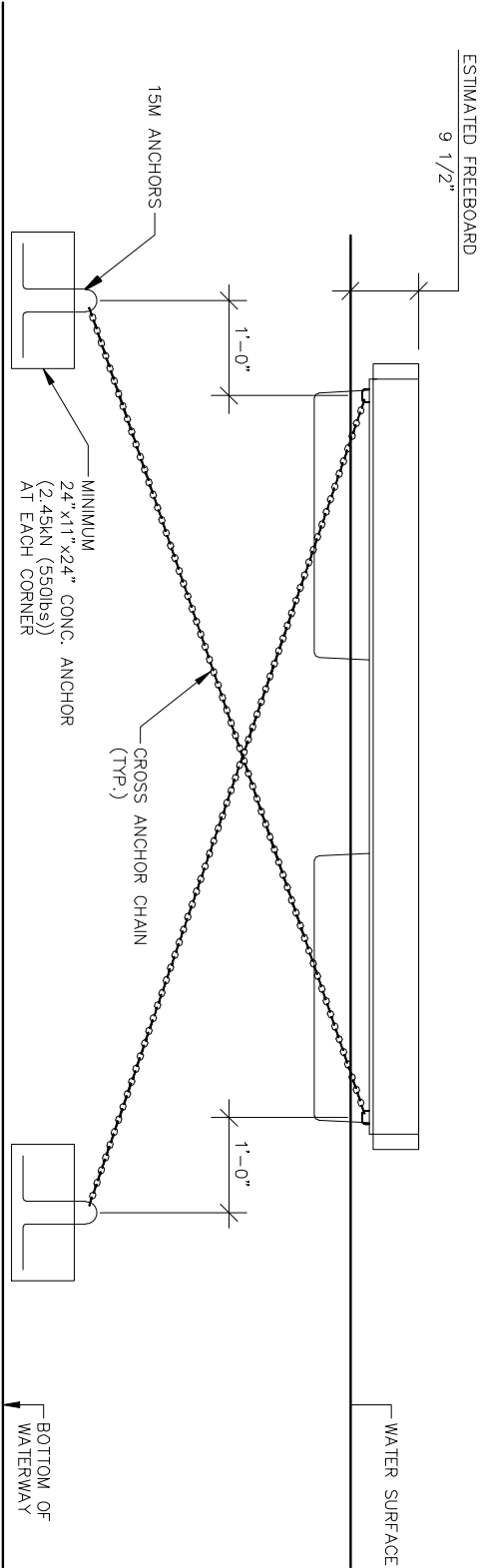
Asset No.  
XXXXX

Drawing Re No./No. du Dessin

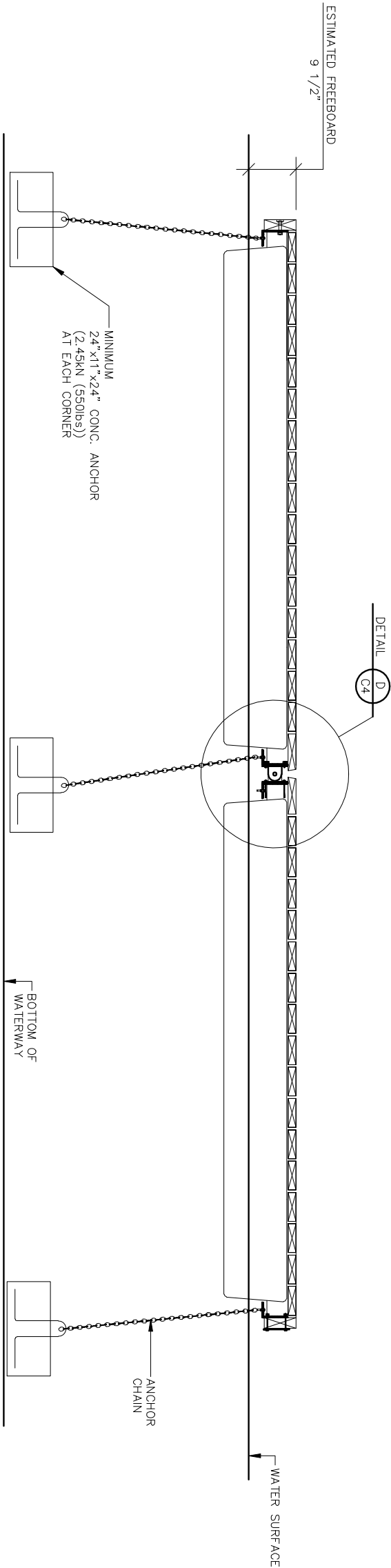
Sheet No./  
Feuille No.

C7

FOR GENERAL NOTES  
REFER TO DRWG C3



END ELEVATION – DOCK ANCHORAGE



SIDE ELEVATION – DOCK ANCHORAGE

--	--

--	--

1	2010/11/01	PRELIMINARY ISSUED FOR REVIEW
---	------------	-------------------------------

no.	date	description
-----	------	-------------

revisions		
-----------	--	--

Linear dimensions in imperial	Dimensions linéaires en impérial
----------------------------------	-------------------------------------



PARKS CANADA  
ESTRIEN ONTARIO FIELD UNIT

Type of Record / Type d'enregistrement	Type
---	------

Project title / Titre du projet	CANOE/KAYAK INFRASTRUCTURE PROGRAM
---------------------------------	--

Drawing title / Titre du dessin

FIELD CONFIGURATION

Scale / Echelle

SCALE

Drawn by/ Dessiné par	Date
-----------------------	------

W.J.L.	XXXXX
--------	-------

Field Recording by / Relevé—Témoin par	Date
---	------

Approved by / Approuvé par	Date
----------------------------	------

Checked by/ Vérifié par	
-------------------------	--

Project No./ No. du projet	Asset No. XXXXX	Sheet No./ Feuille No.
----------------------------	--------------------	---------------------------

Drawing Re No./No. du Dessin	C8
------------------------------	----