

|  |          |                   |
|--|----------|-------------------|
|  |          |                   |
|  |          |                   |
|  | 22.10.13 | ISSUED FOR REVIEW |

| no. | date | description |
|-----|------|-------------|
|-----|------|-------------|

revisions

Client Acceptance / Acceptation du client

Signature \_\_\_\_\_ Date \_\_\_\_\_

File No. / No. de dossier \_\_\_\_\_



Canada

PARKS CANADA  
ONTARIO WATERWAYS FIELD UNIT

Type of Record /  
Type d'enregistrement  
TYPE

Project title / Titre du projet  
ONTARIO WATERWAYS  
FIELD UNIT  
DOCK PROGRAM  
PLEASURE CRAFT DOCKS

Drawing title / Titre du dessin

ASSEMBLY SHOP DRWG  
ELEVATIONS

Scale / Echelle  
SCALE

Drawn by/ Dessiné par  
W.J.L. Date  
OCT 2013

Field Recording by /  
Relevé-Témoin par Date

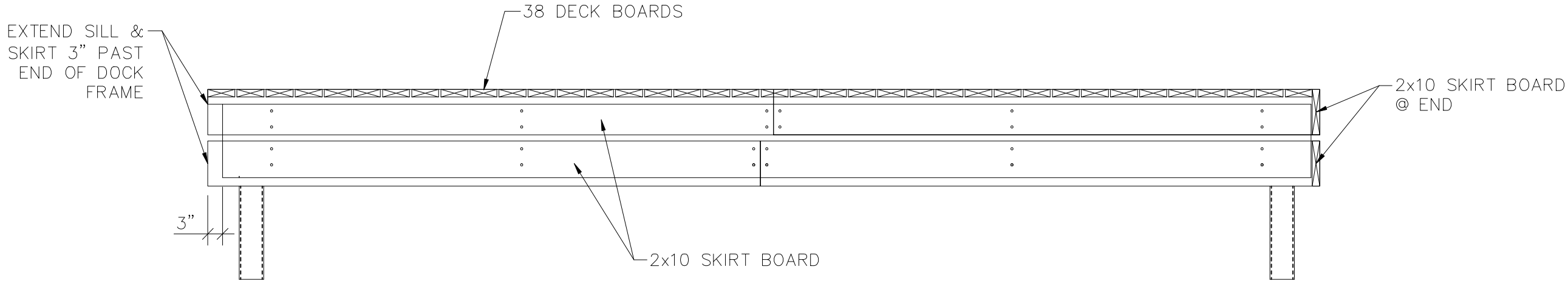
Approved by / Approuvé par Date

Checked by/ Vérifié par

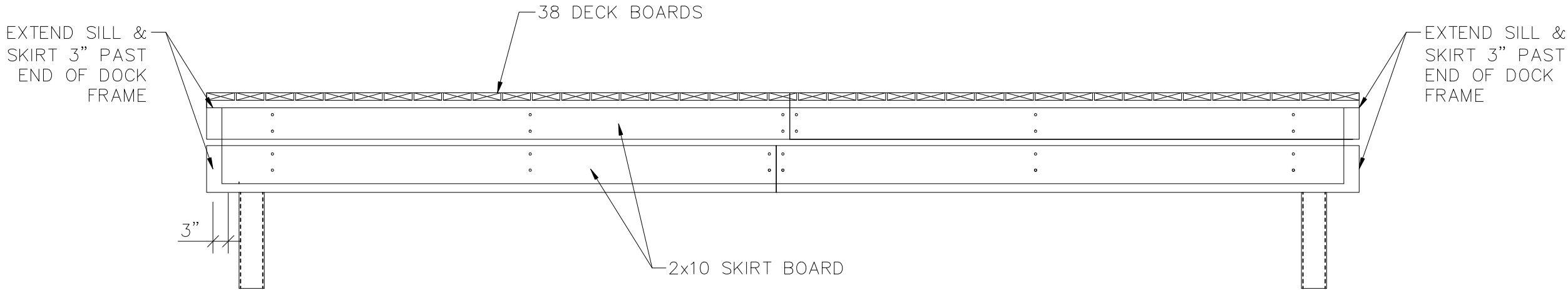
|                            |           |                           |
|----------------------------|-----------|---------------------------|
| Project No./ No. du projet | Asset No. | Sheet No./<br>Feuille No. |
|----------------------------|-----------|---------------------------|

Drawing Re No./No. du Dessin

AS1



ELEVATION — END UNIT



ELEVATION — MIDDLE UNIT

|  |          |                   |
|--|----------|-------------------|
|  |          |                   |
|  |          |                   |
|  | 22.10.13 | ISSUED FOR REVIEW |

| no.       | date | description |
|-----------|------|-------------|
| revisions |      |             |

Client Acceptance / Acceptation du client  
Signature \_\_\_\_\_ Date \_\_\_\_\_  
File No. / No. de dossier \_\_\_\_\_



PARKS CANADA  
ONTARIO WATERWAYS FIELD UNIT

Type of Record /  
Type d'enregistrement  
TYPE

Project title / Titre du projet  
ONTARIO WATERWAYS  
FEILD UNIT  
DOCK PROGRAM  
PLEASURE CRAFT DOCKS

Drawing title / Titre du dessin  
ASSEMBLY SHOP DRWG  
ELEVATIONS

Scale / Echelle  
SCALE

Drawn by/ Dessine par  
W.J.L.  
Date  
OCT 2013




Field Recording by /  
Releve-Temoin par  
Date

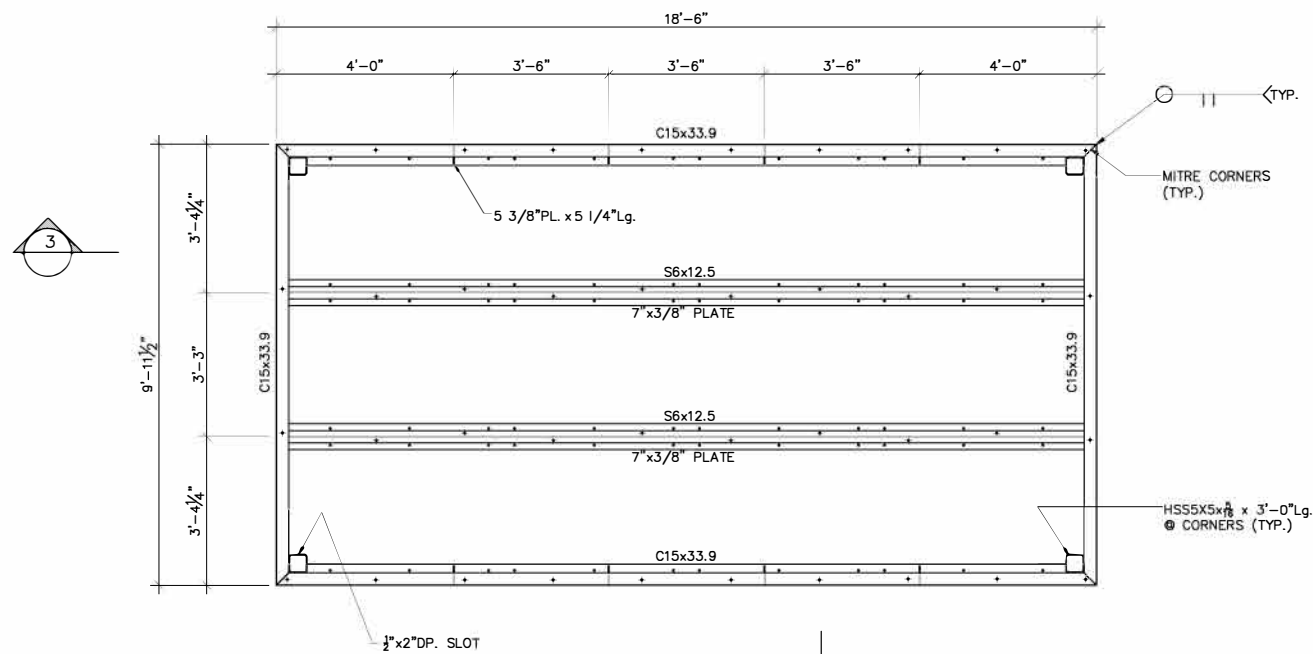
Approved by / Approuve par  
Date

Checked by/ Verifie par

|                              |           |                           |
|------------------------------|-----------|---------------------------|
| Project No./ No. du projet   | Asset No. | Sheet No./<br>Feuille No. |
| Drawing Re No./No. du Dessin |           | AS2                       |

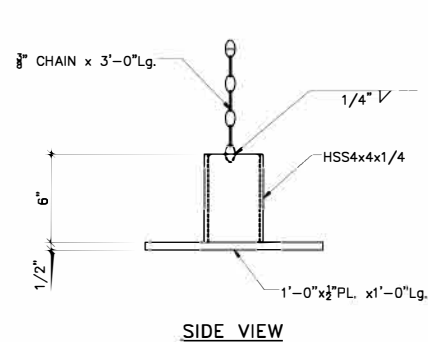
| MATERIAL LIST (1 DOCK SECTION) |                     |         |          |        |
|--------------------------------|---------------------|---------|----------|--------|
| SIZE                           | DESCRIPTION         | LENGTH  | QUANTITY |        |
|                                |                     |         | END      | MIDDLE |
| 2x6                            | EASTERN WHITE CEDAR | 10'–0"  | 38       | 39     |
| 2x10                           | EASTERN WHITE CEDAR | 10'–0"  | 10       | 8      |
| 2x4                            | COMPOSITE LUMBER    | 10'–0"  | 16       | 16     |
| 1/2"∅                          | CARRIAGE BOLTS      | 3"      | 96       | 84     |
| 1/2"∅                          | A307 BOLTS          | 3"      | 54       | 48     |
| 1/2"∅                          | HEX NUTS            | –       | 150      | 132    |
| 1/2"∅                          | FLAT WASHERS        | –       | 96       | 84     |
| 1/2"∅                          | DOCK WASHER         | 3" O.D. | 54       | 48     |
| 3/4"∅                          | A307 BOLTS          | 2"      | 8        | 16     |
| 3/4"∅                          | HEX NUTS            | –       | 8        | 16     |
| 3/4"∅                          | LOCK WASHERS        | –       | 8        | 16     |
| #8                             | DECK SCREWS         | 3"      | 304      | 312    |

|   |           |                           |
|---|-----------|---------------------------|
|   |           |                           |
|   |           |                           |
|   | 22.10.13  | ISSUED FOR REVIEW         |
| no.   | date      | description               |
| revisions   |           |                           |
| Client Acceptance / Acceptation du client   |           |                           |
| Signature _____ Date _____  |           |                           |
| File No. / No. de dossier _____   |           |                           |
| <div><div> Parcs Canada</div><div> Parks Canada</div></div> |           |                           |
|    |           |                           |
| PARKS CANADA<br>ONTARIO WATERWAYS FIELD UNIT  |           |                           |
| Type of Record /<br>Type d'enregistrement   |           |                           |
| TYPE  |           |                           |
| Project title / Titre du projet   |           |                           |
| ONTARIO WATERWAYS<br>FEILD UNIT<br>DOCK PROGRAM<br>PLEASURE CRAFT DOCKS   |           |                           |
| Drawing title / Titre du dessin   |           |                           |
| ASSEMBLY SHOP DRWG<br>MATERIAL LIST   |           |                           |
| Scale / Echelle   |           |                           |
| SCALE   |           |                           |
| Drawn by/ Dessine par   |           | Date                      |
| W.J.L.  |           | OCT 2013                  |
| Field Recording by /<br>Releve–Temoin par   |           | Date                      |
| Approved by / Approuve par  |           | Date                      |
| Checked by/ Verifie par   |           |                           |
| Project No./ No. du projet  | Asset No. | Sheet No./<br>Feuille No. |
| Drawing Re No./No. du Dessin  |           | AS3                       |

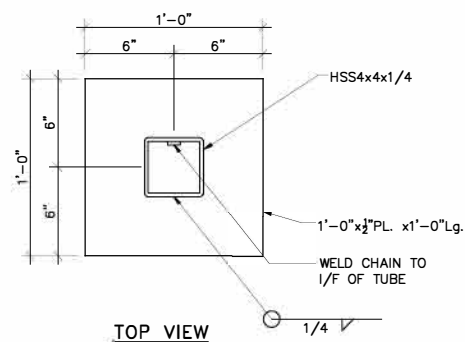


PLAN FRAME CONSTRUCTION- TOP VIEW

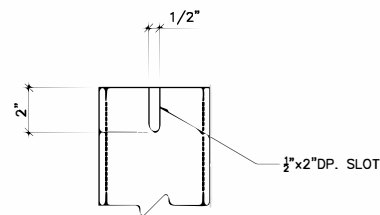
SCALE 1/2" = 1'-0"  
REQUIRED QUANTITY = 4 (TOTAL)



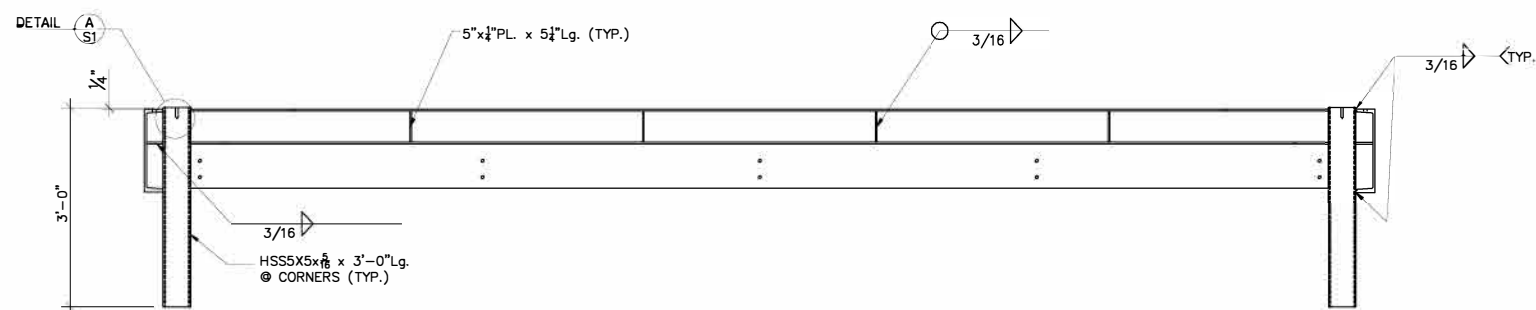
SIDE VIEW



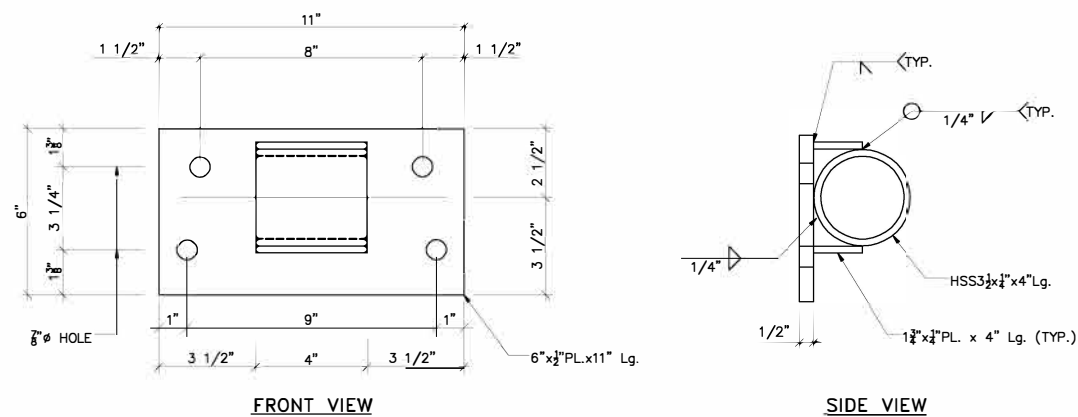
TOP VIEW



DETAIL A  
N.T.S.

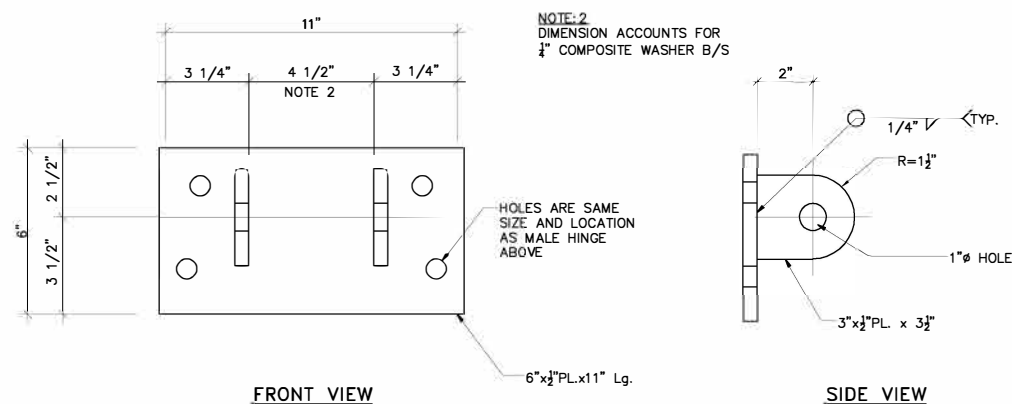


SECTION 3  
SCALE 3/4" = 1'-0"



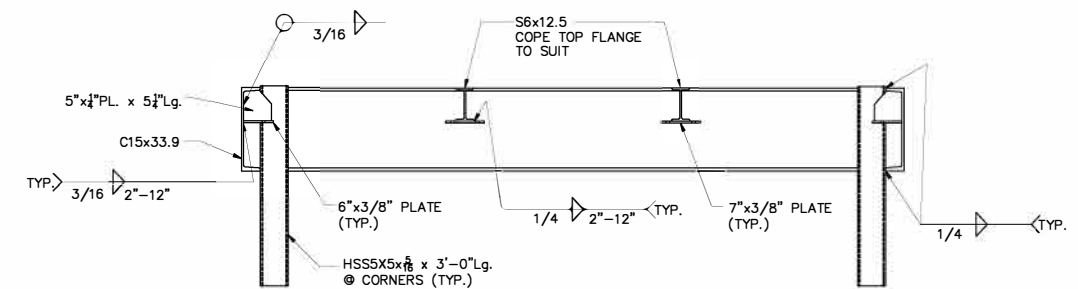
HINGE DETAIL - MALE

N.T.S.  
REQUIRED QUANTITY = 6 (TOTAL)



HINGE DETAIL - FEMALE




N.T.S.  
REQUIRED QUANTITY = 6 (TOTAL)

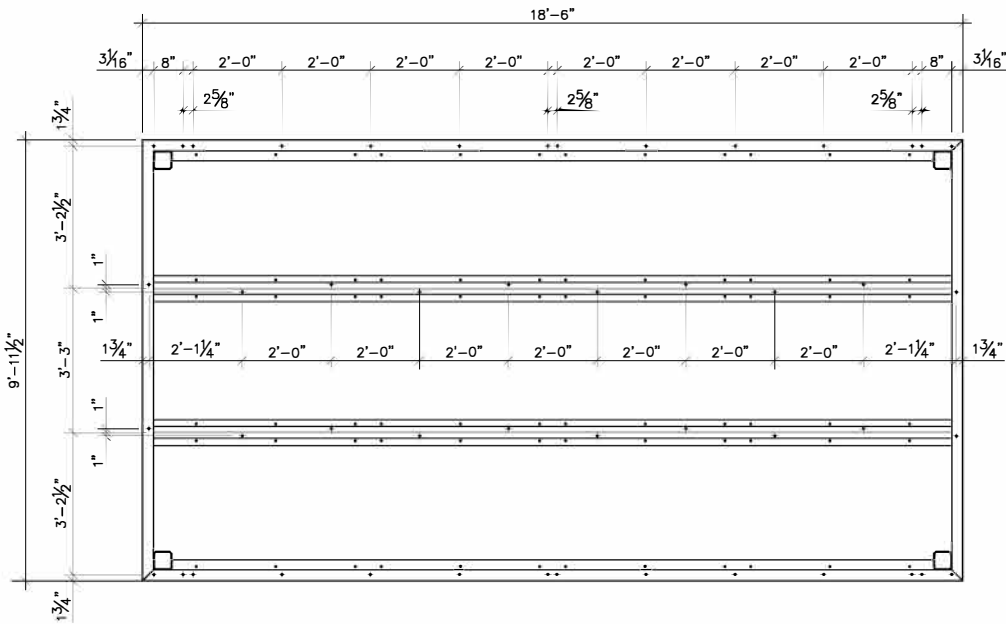


SECTION 4  
SCALE 3/4" = 1'-0"

# GENERAL NOTES:

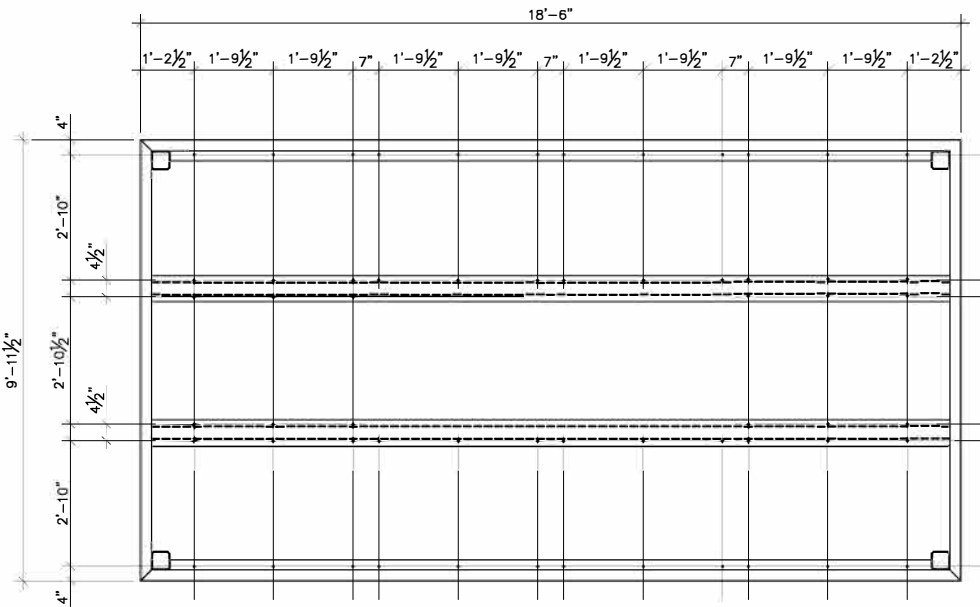
- DO NOT SCALE DRAWINGS. FABRICATOR TO VERIFY ALL DIMENSIONS AND CONDITIONS PRIOR TO FABRICATION.
  - STRUCTURAL STEEL: G40.21M ROLLED SECTIONS - 350MPa PLATES - 300MPa
- WELDING:  
TO W59 STANDARDS BY QUALIFIED COMPANIES UNDER W47.1 AND QUALIFIED WELDERS ONLY.
- PAINTING:  
BAR-RUST 235  
BY DEVCOE HIGH PERFORMANCE COATINGS.

|   |           |                           |
|---|-----------|---------------------------|
|   |           |                           |
|   |           |                           |
| 1   | 22.10.13  | ISSUED FOR REVIEW         |
| rev   | date      | description               |
| revisions:  |           |                           |
| Client Acceptance / Acceptation du client   |           |                           |
| Signature   |           | Date                      |
| Title No. / No. de dossier  |           |                           |
|    |           |                           |
| Canada  |           |                           |
|   |           |                           |
| Type of Record /<br>Type d'enregistrement   |           |                           |
| TYPE  |           |                           |
| Project Title / Titre du projet   |           |                           |
| ONTARIO WATERWAYS<br>FIELD UNIT<br>DOCK PROGRAM<br>PLEASURE CRAFT DOCKS   |           |                           |
| Drawing title / Titre du dessin   |           |                           |
| SUB FRAME<br>PLAN, ELEVATION<br>SECTION AND DETAILS   |           |                           |
| Scale / Echelle   |           |                           |
| 1:40  |           |                           |
| Drawn by/ Dessiné par   | Date      |                           |
| W.J.L.  | OCT 2011  |                           |
| Field Recording by /<br>Relevé-Temoir par   | Date      |                           |
| W.J.L.  | OCT 2011  |                           |
| Approved by / Approuvé par  | Date      |                           |
| Checked by/ Vérifié par   |           |                           |
| Project No./ No. du projet  | Asset No. | Sheet No./<br>Feuille No. |
|   | XXXXXX    |                           |
| Drawing Re No./No. du Dessin  | S1        |                           |



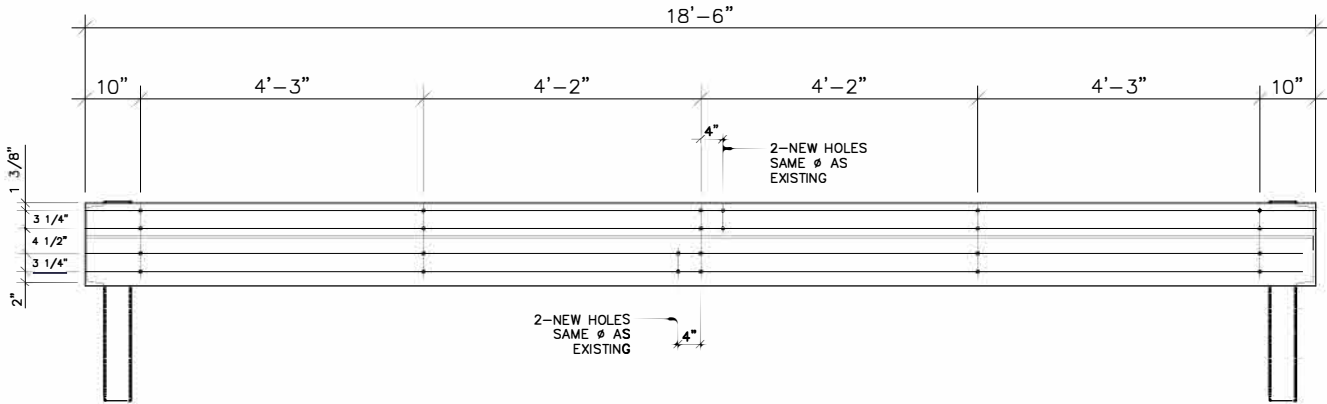
PLAN FRAME HOLES – TOP VIEW

DO NOT SCALE  
NOTE 3: ALL HOLES 8/8" Ø U.N.O.



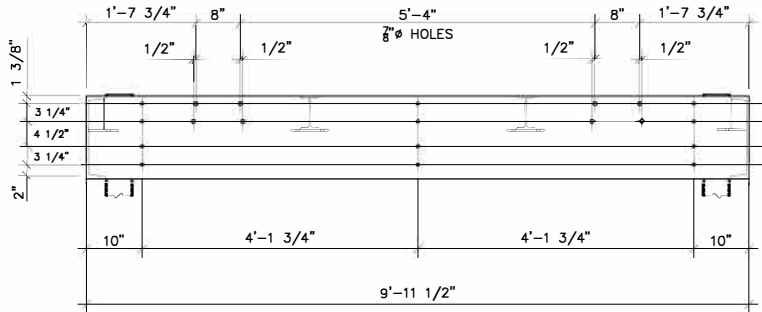
PLAN FRAME HOLES – BOTTOM VIEW

DO NOT SCALE  
NOTE 3: ALL HOLES 8/8" Ø U.N.O.  
NOTE 4: DIMENSIONS FOR **REFERENCE ONLY**.  
NOTE 5: CONTRACTOR TO ENSURE THAT BOLT HOLE PATTERN MATCHES  
WITH Den Hartog Industries Inc. 36" x 48" x 24" DOCK FLOATS  
PRIOR TO FABRICATION



ELEVATION FRAME HOLES – SIDE VIEW

DO NOT SCALE  
NOTE 3: ALL HOLES 8/8" Ø U.N.O.



ELEVATION FRAME HOLES – END VIEW


DO NOT SCALE  
NOTE 3: ALL HOLES 8/8" Ø U.N.O.

GENERAL NOTES:  
REFER TO DRAWING S1

|  |                   |                           |
|--|-------------------|---------------------------|
|  |                   |                           |
|  |                   |                           |
| 22-10-13   | ISSUED FOR REVIEW |                           |
| no.  | date              | description               |
| revisions  |                   |                           |
| Client Acceptance / Acceptation du client  |                   |                           |
| Signature  |                   | Date                      |
| File No. / No. de dossier  |                   |                           |
| <div><div><div></div><div></div></div><div><div>Parcs</div><div>Canada</div></div><div><div>Parcs</div><div>Canada</div></div></div> |                   |                           |
| Canada   |                   |                           |
| PARCS CANADA<br>ONTARIO WATERWAYS FIELD UNIT   |                   |                           |
| Type of Record /<br>Type d'enregistrement  |                   |                           |
| TYPE   |                   |                           |
| Project Title / Titre du projet  |                   |                           |
| ONTARIO WATERWAYS<br>FIELD UNIT<br>DOCK PROGRAM<br>PLEASURE CRAFT DOCKS  |                   |                           |
| Drawing title / Titre du dessin  |                   |                           |
| SUB FRAME<br>PLAN AND ELEVATION<br>BOLT HOLE LOCATIONS   |                   |                           |
| Scale / Echelle  |                   |                           |
| 1:40   |                   |                           |
| Drawn by/ Dessiné par  |                   | Date                      |
| W.J.L.   |                   | OCT 2011                  |
| Field Recording by /<br>Relevé-terrain par   |                   | Date                      |
| W.J.L.   |                   | OCT 2011                  |
| Approved by / Approuvé par   |                   | Date                      |
| Checked by/ Vérifié par  |                   |                           |
| Project No./ No. du projet   |                   | Asset No.<br>XXXXXX       |
| Drawing No./No. du Dessin  |                   | Sheet No./<br>Feuille No. |
|  |                   | S2                        |

| MATERIAL LIST (1 DOCK SECTION) |            |          |
|--------------------------------|------------|----------|
| DESCRIPTION                    | LENGTH     | QUANTITY |
| FRAME (ONE FRAME)              |            |          |
| C15x33.9                       | 18'-6"     | 2        |
| C15x33.9                       | 9'-11 1/2" | 2        |
| S6x12.5                        | 18'-6"     | 2        |
| 7" x 3/8" PLATE                | 18'-6"     | 2        |
| 6" x 3/8" PLATE                | 18'-6"     | 2        |
| 5" x 3/8" PLATE                | 5 1/4"     | 8        |
| HSS 5"x5"x5/16"                | 3'-0"      | 4        |
| HINGE (ONE HINGE)              |            |          |
| 6"x1/2"PLATE                   | 11"        | 2        |
| 3"x1/2"PLATE                   | 3 1/2"     | 2        |
| 1 3/4"x1/4" PLATE              | 4"         | 2        |
| HSS 3 1/2"x1/4"                | 4          | 1        |
| NEOPRENE SLEEVE                |            |          |
| BEARING PAD (ONE PAD)          |            |          |
| 1'-0" x 1/2" PLATE             | 1'-0"      | 1        |
| HSS 4"x4"x1/4"                 | 6"         | 1        |
| 3/8" CHAIN                     | 3'-0"      | 1        |

GENERAL NOTES:  
REFER TO DRAWING S1

|  |                    |                           |
|--|--------------------|---------------------------|
|  |                    |                           |
|  |                    |                           |
| 1  | 22/10/15           | ISSUED FOR REVIEW         |
| no   | date               | description               |
| Revisions  |                    |                           |
| Client Acceptance / Acceptation du client  |                    |                           |
| Signature  |                    | Date                      |
| File No. / No. de dossier  |                    |                           |
|                       |                    |                           |
| Canada   |                    |                           |
| PARKS CANADA<br>ONTARIO WATERWAYS FIELD UNIT   |                    |                           |
| Type of Record /<br>Type d'enregistrement  |                    |                           |
| TYPE   |                    |                           |
| Project title / Titre du projet<br>ONTARIO WATERWAYS<br>FIELD UNIT<br>DOCK PROGRAM<br>PLEASURE CRAFT DOCKS |                    |                           |
| Drawing title / Titre du dessin<br>SUB FRAME<br>MATERIAL LIST  |                    |                           |
| Scale / Echelle<br>1:40  |                    |                           |
| Drawn by/ Dessiné par<br>W.J.L.  |                    | Date<br>OCT 2011          |
| Field Recording by /<br>Relevé-Terminé par<br>W.J.L.   |                    | Date<br>OCT 2011          |
| Approved by / Approuvé par   |                    | Date                      |
| Checked by/ Vérifié par  |                    |                           |
| Project No./ No. du projet   | Asset No.<br>XXXXX | Sheet No./<br>Feuille No. |
| Drawing No./No. du Dessin  |                    | S3                        |