

BASEDATA:
 © Department of Natural Resources Canada, All rights reserved; National Road Network, National Railway Network Geobase®, Downloaded March 2014; Waterbodies 50k, GeomaticsYukon, Downloaded August 2016; Watercourses 50k, GeomaticsYukon, Downloaded August 2016, Contours 50k, GeomaticsYukon, Downloaded August 2016;

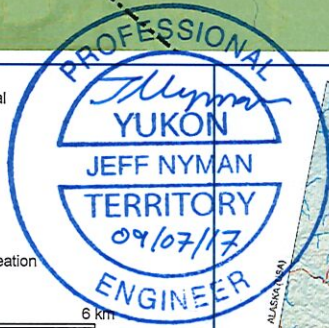
- Contour (20m)
- Municipality Boundary
- Watercourse
- Wetland
- Building
- Wooded Area
- Developed Area
- Arterial
- Local / Street
- Alleyway / Lane
- Resource / Recreation
- Highway



SCALE 1:100,000

WHEN PLOTTED CORRECTLY ON A 8.5 x 11 PAGE LAYOUT
 NAD 1983 UTM Zone 9 V

THIS DRAWING IS FOR CONCEPTUAL PURPOSES ONLY. ACTUAL
 LOCATIONS MAY VARY AND NOT ALL STRUCTURES ARE SHOWN.



PUBLIC SERVICES AND PROCUREMENT
 CANADA (PSPC)
 WATSON LAKE AIRPORT
 WATSON LAKE, YT

2017 AEC 5 REMEDIATION SPECIFICATION

SITE LOCATION

Date: September 7, 2017

Project No. 205.03873.00000

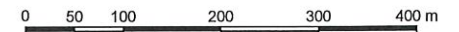
Drawing No.

1



NOTES:
 REFERENCED FROM FRONTIER GEOSCIENCE INC. BATHYMETRY, SIDE-SCAN SONAR AND MAGNETOMETER SURVEY REPORT, PROJECT FGI-1454 (SEPTEMBER 2016). IMAGERY: ESRI WMS, DIGITAL GLOBE, GEOEYE, EARTHSTAR GEOGRAPHICS, CNES/AIRBUS DS, USDA, USGS, AEX, GETMAPPING, AEROGRIID, IGN, IGP, SWISS TOPO, AND THE GIS COMMUNITY, ACCESSED FEBRUARY 2017

LEGEND:
 - - - - - WATSON LAKE AIRPORT BOUNDARY
 [Red dashed line] RESTRICTED AREA (AVIATION OPERATIONS)



SCALE 1:7,500
 WHEN PLOTTED CORRECTLY ON A 11 x 17 PAGE LAYOUT
 NAD 1983 UTM Zone 9 V
 THIS DRAWING IS FOR CONCEPTUAL PURPOSES ONLY. ACTUAL LOCATIONS MAY VARY AND NOT ALL STRUCTURES ARE SHOWN.

PUBLIC SERVICES AND PROCUREMENT
 CANADA (PSPC)
 WATSON LAKE AIRPORT
 WATSON LAKE, YT

2017 AEC 5 REMEDIATION SPECIFICATION

SITE LAYOUT

Date: September 7, 2017	Drawing No. 2
Project No. 205.03873.00000	

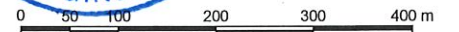
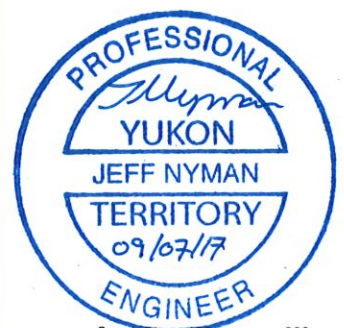


Caddfile name: S_205-03873-00000-A2.dwg



NOTES:
 REFERENCED FROM FRONTIER GEOSCIENCE INC. BATHYMETRY, SIDE-SCAN SONAR AND MAGNETOMETER SURVEY REPORT, PROJECT FGI-1454 (SEPTEMBER 2016). IMAGERY: ESRI WMS, DIGITAL GLOBE, GEOEYE, EARTHSTAR GEOGRAPHICS, CNES/AIRBUS DS, USDA, USGS, AEX, GETMAPPING, AEROGRIID, IGN, IGP, SWISSTOPO, AND THE GIS COMMUNITY, ACCESSED FEBRUARY 2017

- LEGEND:
- WATSON LAKE AIRPORT BOUNDARY
 - AEC 5 PROPOSED WORK AREA
 - PROPOSED WORK AREA
 - RESTRICTED AREA (AVIATION OPERATIONS)



SCALE 1:7,500
 WHEN PLOTTED CORRECTLY ON A 11 x 17 PAGE LAYOUT
 NAD 1983 UTM Zone 9 V
 THIS DRAWING IS FOR CONCEPTUAL PURPOSES ONLY. ACTUAL LOCATIONS MAY VARY AND NOT ALL STRUCTURES ARE SHOWN.

PUBLIC SERVICES AND PROCUREMENT
 CANADA (PSPC)
 WATSON LAKE AIRPORT
 WATSON LAKE, YT

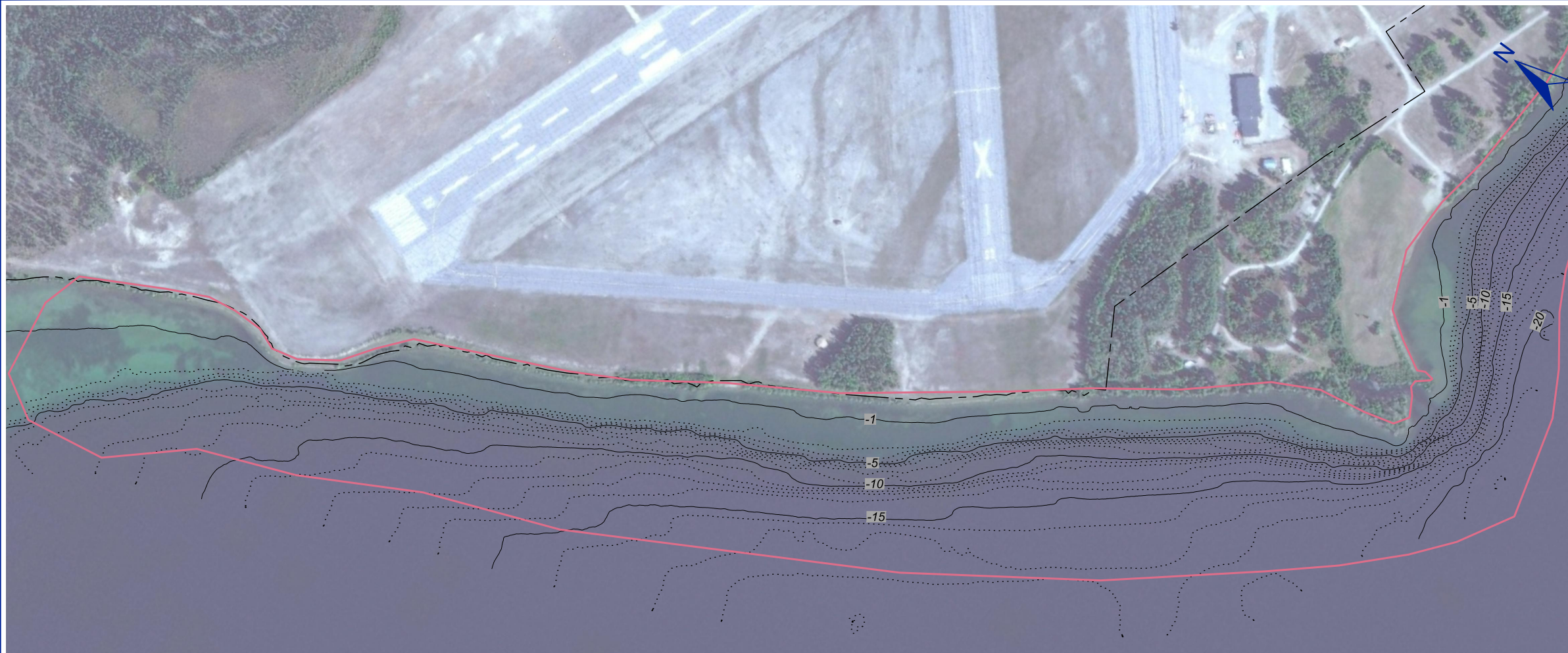
2017 AEC 5 REMEDIATION SPECIFICATION

PROPOSED WORK AREAS

Date: September 7, 2017	Drawing No.
Project No. 205.03873.00000	3



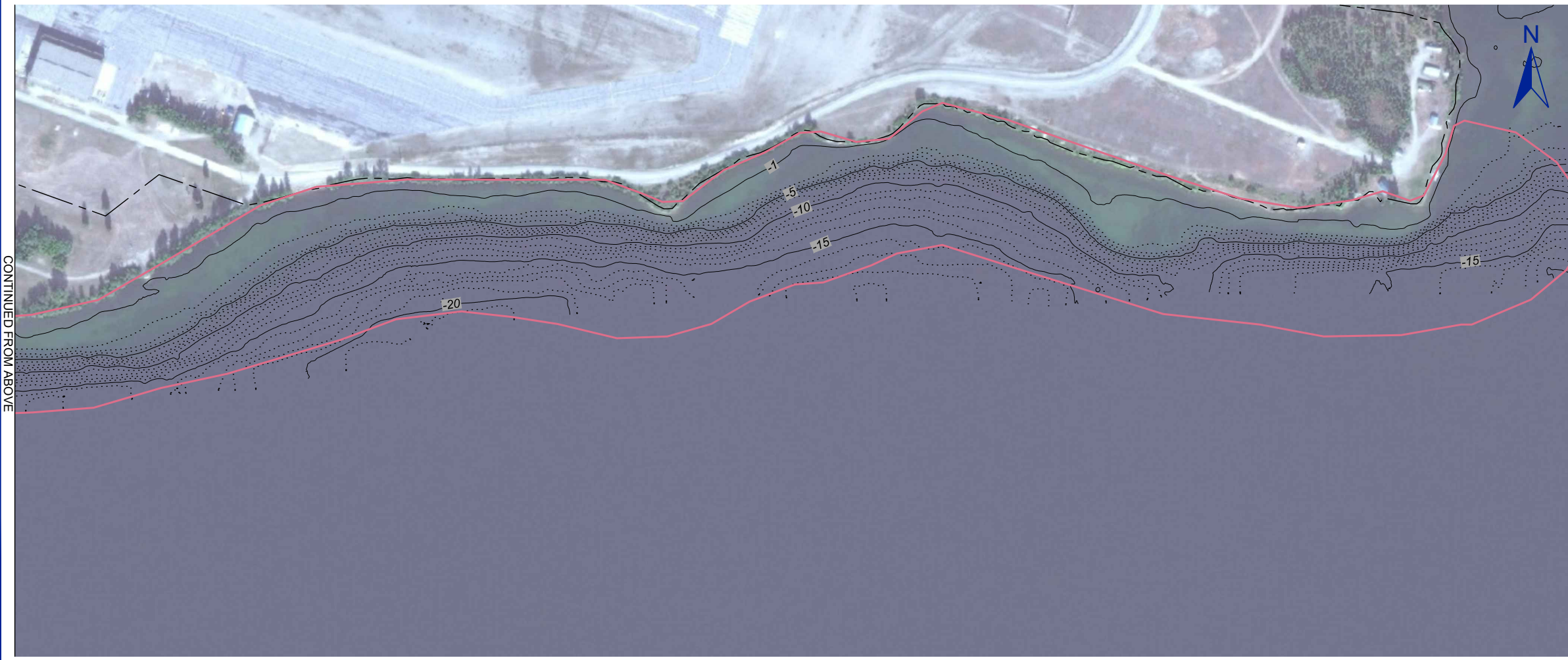
Cadfile name: S_205-03873-00000-A2.dwg



NOTES:
 REFERENCED FROM FRONTIER GEOSCIENCE INC. BATHYMETRY, SIDE-SCAN SONAR AND MAGNETOMETER SURVEY REPORT, PROJECT FGI-1454 (SEPTEMBER 2016). IMAGERY: ESRI WMS, DIGITAL GLOBE, GEOEYE, EARTHSTAR GEOGRAPHICS, CNES/AIRBUS DS, USDA, USGS, AEX, GETMAPPING, AEROGRID, IGN, IGP, SWISSTOPO, AND THE GIS COMMUNITY, ACCESSED FEBRUARY 2017

- LEGEND:
- WATSON LAKE AIRPORT BOUNDARY
 - AEC 5 PROPOSED WORK AREA BOUNDARY
 - BATHYMETRIC ELEVATION CONTOUR (5 m INTERVAL)
 - BATHYMETRIC ELEVATION CONTOUR (1 m INTERVAL)

CONTINUED BELOW



CONTINUED FROM ABOVE



SCALE 1:5,000
 WHEN PLOTTED CORRECTLY ON A 11 x 17 PAGE LAYOUT
 NAD 1983 UTM Zone 9 V

THIS DRAWING IS FOR CONCEPTUAL PURPOSES ONLY. ACTUAL LOCATIONS MAY VARY AND NOT ALL STRUCTURES ARE SHOWN.

**PUBLIC SERVICES AND PROCUREMENT
 CANADA (PSPC)
 WATSON LAKE AIRPORT
 WATSON LAKE, YT**

2017 APEC 5 REMEDIATION SPECIFICATION

BATHYMETRY

Date: September 7, 2017	Drawing No. 4
Project No. 205.03873.00000	



NOTES:
 REFERENCED FROM FRONTIER GEOSCIENCE INC. BATHYMETRY, SIDE-SCAN SONAR AND MAGNETOMETER SURVEY REPORT, PROJECT FGI-1454 (SEPTEMBER 2016). IMAGERY: ESRI WMS, DIGITAL GLOBE, GEOEYE, EARTHSTAR GEOGRAPHICS, CNES/AIRBUS DS, USDA, USGS, AEX, GETMAPPING, AEROGRIID, IGN, IGP, SWISSSTOPO, AND THE GIS COMMUNITY, ACCESSED FEBRUARY 2017

LEGEND:
 - - - - - WATSON LAKE AIRPORT BOUNDARY
 - - - - - AEC 5 PROPOSED WORK AREA
 ◆ LOCATION OF OBJECT(S) TO BE REMOVED
 □ LOCATION OF MULTIPLE OBJECTS OVER A LARGE AREA TO BE REMOVED

Location ID	Description
2017-014	Other object
2017-017	1 barrel
2017-018	1 barrel, other object
2017-019	other object
2017-020	1 barrel
2017-021	Other object
2017-023	1 barrel
2017-024	3 barrels
2017-025	3 barrels
2017-026	1 barrel
2017-027	Other object
2017-028	1 barrel
2017-034	Other object
2017-038	1 barrel
2017-039	4 barrels
2017-040	5 barrels
2017-041	2 barrels
2017-042	3 barrels
2017-043	1 barrels
2017-044	Other object
2017-045	1 barrel
2017-046	1 barrel
2017-047	5 barrels
2017-048	2 barrels
2017-051	Other object
2017-052	5 barrels
2017-053	1 barrels
2017-054	1 barrels
2017-055	Other object
2017-056	1 barrel
2017-057	Other object
2017-058	Other object
2017-059	1 barrel
2017-060	27 barrels

0 100 200 400 600 m

SCALE 1:10,000
 WHEN PLOTTED CORRECTLY ON A 11 x 17 PAGE LAYOUT
 NAD 1983 UTM Zone 9 V

THIS DRAWING IS FOR CONCEPTUAL PURPOSES ONLY. ACTUAL LOCATIONS MAY VARY AND NOT ALL STRUCTURES ARE SHOWN.

PUBLIC SERVICES AND PROCUREMENT
 CANADA (PSPC)
 WATSON LAKE AIRPORT
 WATSON LAKE, YT

2017 AEC 5 REMEDIATION SPECIFICATION

BASE WORK - LOCATION OF OBJECTS
 REQUIRING REMOVAL/DISPOSAL

Date: September 7, 2017
 Project No. 205.03873.00000
 Drawing No. 5

