



Royal Canadian Mounted Police
Gendarmerie royale du Canada

Doc. no: PD-PC-30

Date: 2017-01-04

Purchase Description

Jacket, Take Down

This document has 14 pages including the drawings.

This document was created in English.

The document is available in English and French.

English/Anglais
Français/French

The photograph on this page is for reference only.



RCMP VIEWING SAMPLE

A viewing sample, when available, will be supplied to the successful bidder.

This will be used to guide manufacturer in all factors not covered by this purchase description or referred to therein. Variation from the purchase description may appear in the sample in which case the purchase description shall govern.

It may be obtained from:

Royal Canadian Mounted Police
ATTN: Uniform & Equipment Program
(440 Coventry Road, Warehouse Building)
1200 Vanier Parkway
Ottawa, Ontario
K1A 0R2

It will be sent “prepaid” and is to be returned “prepaid”.

The viewing sample shall be returned to the RCMP in the same condition as received by the manufacturer. Lost or damaged viewing samples shall be replaced by an identical item or the RCMP shall be reimbursed for the cost of an acceptable replacement.

PURCHASE DESCRIPTION

JACKET, TAKE DOWN

1 Definitions

- 1.1 This purchase description shall govern the manufacture and inspection of the Jacket, Take Down. The specific item covered under this purchase description with stock numbers is as follows:
 - i. 3980- Jacket, Take Down/ Blouson d'intervention.
 - ii. 3981- Jacket, Take Down, Special/ Blouson d'intervention, taille spéciale.
- 1.2 This purchase description, or other information issued in connection therewith, may only be used for specific enquiries, solicitations, or orders placed on behalf of the Royal Canadian Mounted Police.
- 1.3 This purchase description supersedes all previous purchase descriptions for RCMP Jacket, Take Down.
- 1.4 This purchase description has been translated into French from this original English language document.

2 Applicable Specifications

- 2.1 The following publications are applicable to this purchase description and to the issues in effect on the date of the solicitation, unless otherwise specified.
- 2.2 CAN/CGSB 4.2, Textile Test methods.
- 2.3 ISO 4915:1991, Textiles – Stitch Types.
- 2.4 CAN/CGSB 4.131-93, Thread, Polyester, Polyester Covered.
- 2.5 CAN/ CGSB 86.1-2003, Care Labelling of Textiles.

3 General Requirements

- 3.1 The article or material covered by this purchase description shall be free from imperfections or blemishes such as may affect its appearance or serviceability.

- 3.2 **Design** – The Jacket, Take Down shall consist of a polyurethane coated nylon shell, black in colour. The Jacket, Take Down shall have dome fasteners for the front closure. The bottom hem shall be sewn to form a channel for the elastic draw cord and cord lock. There shall be a Police hide away patch on the front and back of the jacket.

4 **Detail Requirements**

4.1 **Components**

- 4.1.1 **Shell Material** – Shall be 100% nylon, plain weave, 84 ± 8 g/m², coated on one side with polyurethane finish, black in colour, to match viewing sample.
- 4.1.2 **Elastic** - Shall be good quality elastic, 1-1.5 cm width, equal in stretch and recovery performance to the viewing sample.
- 4.1.3 **Elastic Drawcord** - The drawcord shall be round braided polyester elastic, black in colour, 2.3 mm, with maximum elongation of 135% and full recovery. Cansew style EBR C-38 is known to meet the requirement.
- 4.1.4 **Thread** - The thread shall be polyester core, polyester-covered or cotton-covered, Tex. 40, of matching colour, meeting CAN/CGSB-4.131-93.
- 4.1.5 **Interlining** – The interlining shall be a light weight, non-fusible, non-woven, 100% polyester, equal to the viewing sample.
- 4.1.6 **Dome Fastener** - The dome fastener shall be a standard type 24 line fastener. All metal parts to be brass with a 15 mm matte black, powder coated cap. Universal SW61 (only).
- 4.1.7 **Hook and Loop** - Shall be woven nylon, black in colour, with a high life cycle. The combined hook and loop shall have no less than 8 P.S.I length-wise shear strength. The initial peel strength shall not be less than 1 P.I.W and after 1000 cycles shall be not less than 0.5 P.I.W. with a minimum lengthwise shear of 4 P.S.I.
- 4.1.8 **Cord Lock** - The cord lock shall be low profile cord lock cylinder, spring loaded in acetyl composition, black in colour. The cord lock for the hem channel shall be

shaped with a maximum diameter of 13 mm and a maximum depth of 11.2 mm. Texfast style #S217B is known to meet the requirement.

- 4.1.9 **Eyelets** - The eyelets shall be black in colour with a 5-6 mm diameter hole, brass or aluminum.
- 4.1.10 **Grograin Ribbon** – Shall be nylon grograin ribbon, black in colour and come in 1 cm width.
- 4.1.11 **Reflective Letterings** – Shall be reflective material, silver in colour, in the form of a heat transfer film. The reflective material shall meet a minimum coefficient of retro reflection, R_A , of 500. The reflective lettering shall be durable and able to withstand a minimum of 50 washes.
- 4.2 **Size and Dimensions** - Jacket, Take Down to this purchase description shall be supplied in the sizes specified in the scale of measurements attached and forming part of this purchase description.
- 4.3 **Construction Requirements**
- 4.3.1 **Stitching** – All stitching shall be lockstitch. There shall be not less than three nor more than four stitches per centimetre. The beginning and ending of all stitching shall be securely backstitch tacked unless secured by other stitching.
- 4.3.2 **Body** - The front shall be fitted with six (6) dome fasteners specified in para. 4.1.6. The front facing shall be interlined with the material specified in para. 4.1.5. There shall be a floating yoke on both front and back of the jacket, sewn at the shoulder and the arm seams as well as the front closure seam, and secured by hook and loop tape as specified in para. 4.1.7. The jacket shall have hideaway flaps constructed from the shell material incorporating reflective lettering POLICE and RCMP GRC as per para. 4.1.11, attached to the jacket, hidden by the yoke when not deployed. The body shall conform in all respects to the drawings.
- 4.3.3 **Coat Hanger** - A 6–7 cm long coat hanger, constructed from grograin ribbon as per para. 4.1.10 shall be centered at the neck in accordance with the viewing sample.
- 4.3.4 **Draw Cord Channel** – The bottom edge shall be turned up 2.0 cm and stitched to form a channel for the elastic draw cord specified in para. 4.1.3. The hem channel

shall have two eyelets as per para. 4.1.9, 6 cm from the edge of the left front as identified in drawing # 4. An elastic drawcord as specified in para. 4.1.3 shall be securely attached into the right front seam and threaded through the hem channel. It shall continue through the smaller cord lock as specified in para. 4.1.8, and through the eyelet outside the hem channel. It shall be threaded back through the second eyelet and continue back through the cord lock where the drawcord shall be knotted. When assembled completely, the cord lock shall be hidden in the channel with only the looped end of the elastic drawcord showing as per drawing #4.

- 4.3.5 **Sleeve** - The sleeves shall be one piece sleeves, with the elastic specified in para. 4.1.2 inserted in the cuff as per the viewing sample.
- 4.3.6 **Pockets** - The jacket shall have two lower front slash pockets made of shell material. The pocket opening shall measure 18 cm. Facing and construction details shall match the drawing and viewing sample.
- 4.3.7 **Collar** – The collar shall be a two piece collar made of shell material interlined with the material specified in para 4.1.5. The centre back of the collar shall have a width of 12 ± 0.5 cm. The front edges of the collar shall have a width of 10 ± 0.5 cm. The collar length shall be dimensioned as per the Scale of Measurements.
- 4.3.8 **“POLICE” and “RCMP GRC” Letterings** - The Jacket, Take Down shall have reflective “POLICE” letterings (7.5cm x 30cm), silver in colour, heat transferred to a hideaway flap made of shell material on the rear of the jacket. On the front attached to a hideaway flap made of shell material on the left side shall be lettering “RCMP GRC” (1.5cm x 11cm) over “POLICE” (2.5cm x 11cm), silver in colour, in the sizes and dimensions specified in drawing #3. The flaps shall tuck up under the yoke when not deployed.
- 4.4 **Marking and Cleaning Instructions Label** – Each Jacket, Take Down shall have a durable label positioned on the middle top of the inside back directly below the collar seam. All text except for the RCMP stock number shall be in size 6 font. The RCMP stock number shall appear in size 8 font. The manufacturer’s identification shall not appear anywhere on the garment except where indicated on the garment label. The label shall contain the following information in English and French:
1. Item name in English as written in para. 1.1.
 2. Item name in French as written in para. 1.1.

3. RCMP Stock number- reference contract documents. (Ex. 3980 000)
4. Size of the article, combining the size designation referenced in the English and French contract documents. (Ex. L-G)
5. Date of manufacture, in numeric format year/month (Ex. 2001/11)
6. Manufacturer identification (Company name or number).

Machine wash warm	Lavage à l'eau tiède
Do not bleach	Ne pas utiliser d'agent de blanchiment
Do not use softeners	Ne pas utiliser d'agent assouplissant
Tumble Dry - Low temperature	Séchage par culbutage - à basse température
Steam Iron - Low temperature	Repassage à la vapeur - à basse température
Dry clean	Nettoyage à sec

5 **Quality Assurance Provisions**

- 5.1 **Responsibility for Inspection** – Unless otherwise stipulated in the contract, it is the prime contractor’s responsibility to satisfy the RCMP, Uniform and Equipment Program that the material and services being supplied conform to this purchase description. This may be accomplished by performing the tests specified in this purchase description or by demonstrating to the satisfaction of the RCMP, Uniform and Equipment Program that conformity to this purchase description of manufacturing processes is assured. The contractor must use any independent, North American, ISO 9001 certified and ISO 17025 “Textile” certified testing facilities.

- 5.2 The RCMP, Uniform and Equipment Program reserves the right to perform any inspection considered necessary to ensure the material and services conform to the specified requirements. For the purpose of inspection, a portion of each delivery not exceeding two percent or two out of any number delivered under 100 may be put to tests that could destroy the articles. If found to be inferior or not in accordance with this purchase description, all articles so destroyed shall be replaced by others of proper quality and pattern at the expense of the contractor. The entire delivery may also be rejected if it is found that articles previously rejected due to non-repairable defects are redelivered for inspection.

- 5.3 The contractor will be promptly notified when any articles are not accepted and such articles will be returned at the contractor's risk and expense.

6 Scale of Measurement Definitions and Location References

(Refer to the Scale of Measurements and Drawing No. 1)

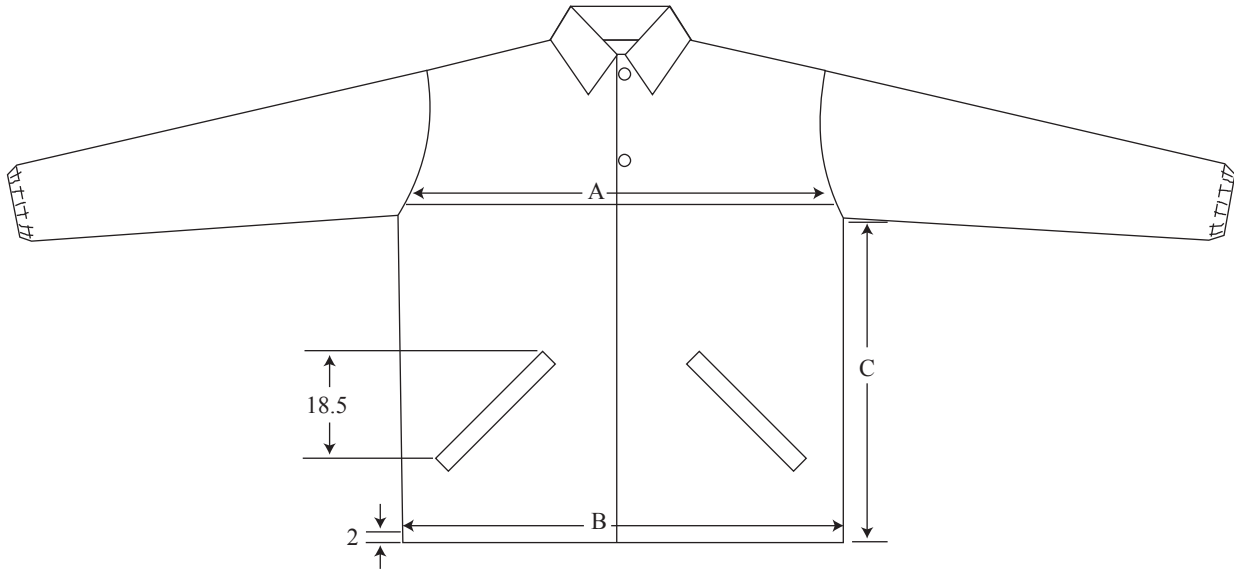
- 6.1 **Chest Circumference (total circumference)** – When placed flat, the chest circumference shall be the distance across the jacket, measured at the widest part of the chest. The result shall be doubled to measure total circumference. (A).
- 6.2 **Bottom Circumference (total circumference)** – When placed flat, the bottom shall be measured across the jacket bottom. The result shall be doubled to measure total circumference. (B).
- 6.3 **Side Length** – The length shall be the distance measured from the underarm seam at the side to the hem. (C).
- 6.4 **Back Length** - The length shall be the distance measured from the bottom of the collar at the back to the hem. (D).
- 6.5 **Back Width** – When placed flat, the distance measured across the back from armhole to armhole at the yoke seam. (E).
- 6.6 **Sleeve Length Overarm** - The overarm sleeve length shall be the distance from the armhole at the shoulder seam to the bottom edge of the sleeve cuff. (F).
- 6.7 **Sleeve Length Underarm** - The underarm sleeve length shall be the distance under sleeve from the underarm seam to the bottom edge of the sleeve cuff. (G).
- 6.8 **Sleeve Cuff Circumference (Relaxed)** - The sleeve cuff shall be measured at the bottom edge of the sleeve when relaxed. The result shall be doubled to measure the total circumference. (H).
- 6.9 **Sleeve Cuff Circumference (Stretched)** - The sleeve cuff shall be measured at the bottom edge of the sleeve when stretched. The result shall be doubled to measure the total circumference. (I).
- 6.10 **Elbow Circumference** – The sleeve shall be folded in half to the underarm seam. The elbow shall be measured across the width of the sleeve at the fold. The result shall be doubled to measure total circumference. (J).
- 6.11 **Collar Length** – The collar length shall be measured along the seam from edge to edge. (K).

**Scale of Measurements
Jacket, Take Down**

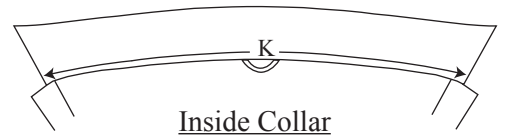
		All measurements in cm unless otherwise indicated										
Body Measurements		Finished Garment Measurements										
Size	Chest	Chest Circumference	Bottom Circumference	Side Length	Back Length	Back Width	Sleeve Length Overarm	Sleeve Length Underarm	Sleeve Cuff Circumference (Relaxed)	Sleeve Cuff Circumference (Stretched)	Elbow Circumference	Collar Length
S	91-96 (36"-38")	118	110	44	71	49	66	56	22	32	41	44
M	102-107 (40"-42")	128	120	46.5	74	51.5	67	56	23	34	43	47
L	112-117 (44"-46")	138	130	49	77	54	68	56	24	36	45	50
XL	122-127 (48"-50")	148	140	51.5	80	56.5	69	56	25	38	47	53
XXL	132-137 (52"-54")	158	150	54	83	59	70	56	26	38	49	56
Tolerances ±		2.5	2.5	2.0	2.0	1.5	1.0	1.5	1.0	1.0	1.0	0.75
Measurement Location		A	B	C	D	E	F	G	H	I	J	K

Measurements Location Chart

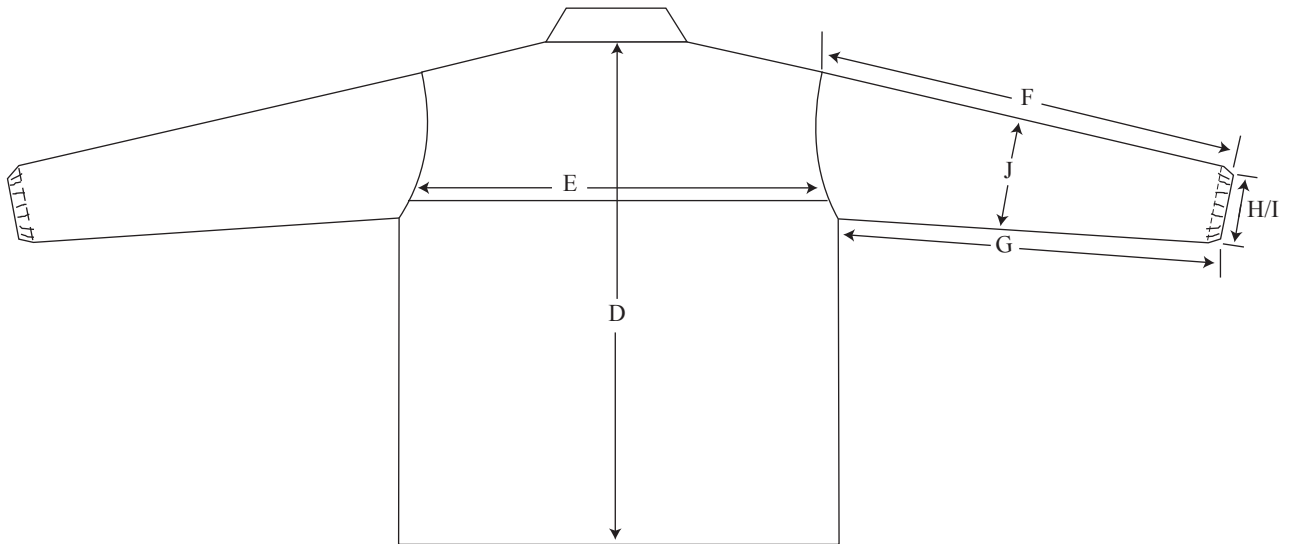
Dwg. 1



Front View



Inside Collar



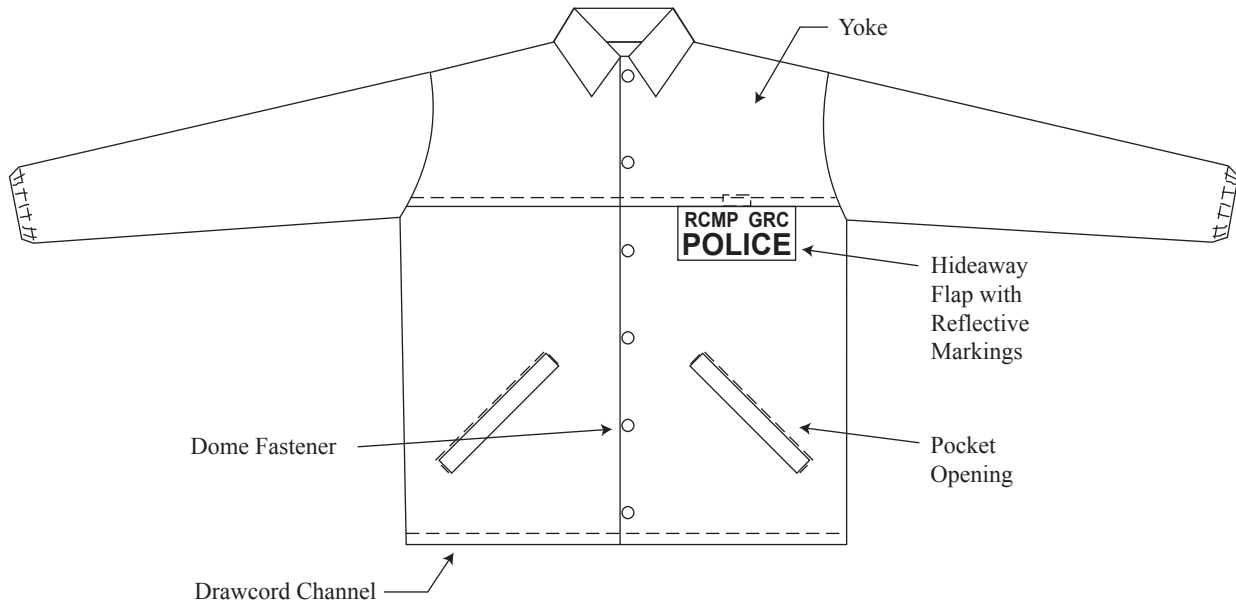
Rear View

NOT TO SCALE

All Measurements in Centimeters

± 1 cm tolerance acceptable unless otherwise indicated.

Dwg. 2



Front View

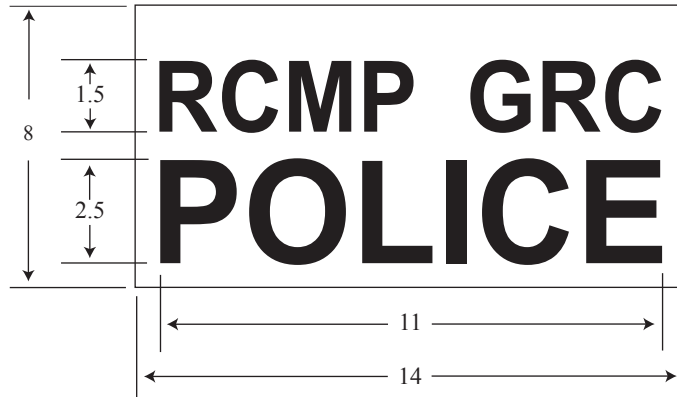


Rear View

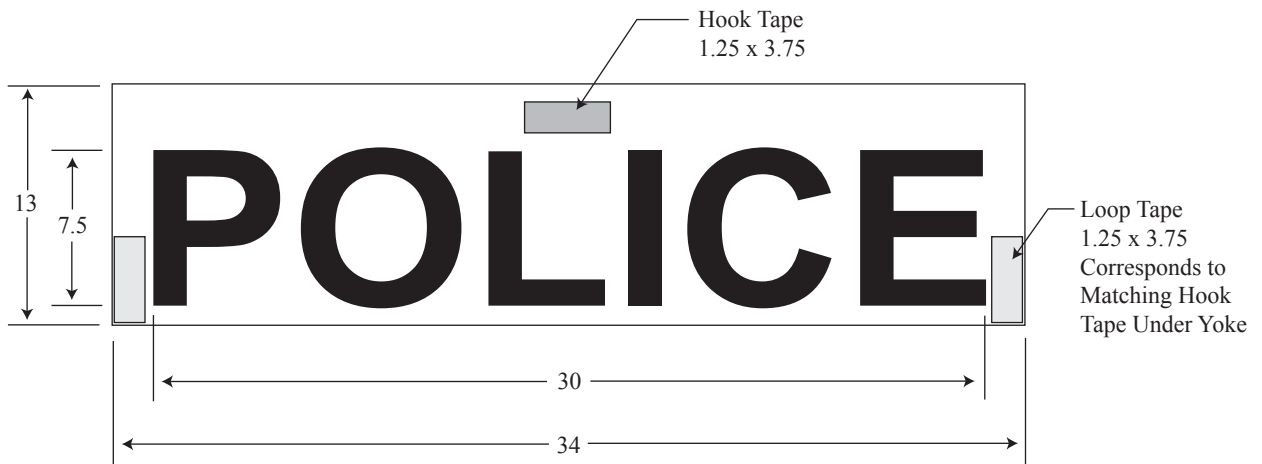
NOT TO SCALE
All Measurements in Centimeters

Hideaway Flaps with Reflective Lettering Detail

Dwg. 3



Reflective RCMP GRC/POLICE Marking
on Hideaway Flap of Left Front of Jacket



Reflective POLICE Marking
on Hideaway Flap on Back of Jacket

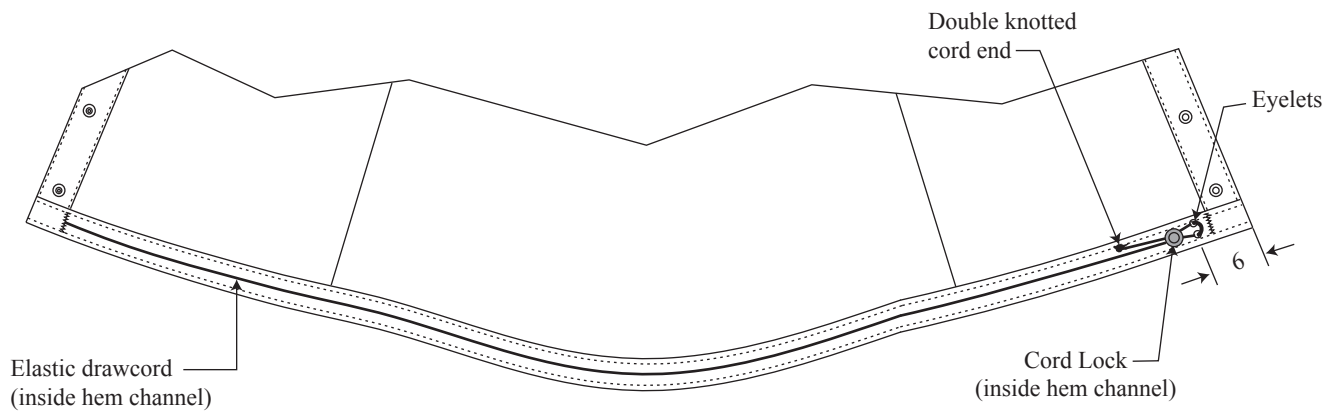
NOT TO SCALE

All Measurements in Centimeters

± 0.5cm tolerance acceptable unless otherwise indicated.

Hem Channel Detail View

Dwg. 4



Hem Channel - Interior View

NOT TO SCALE

All Measurements in Centimeters

± 1 cm tolerance acceptable unless otherwise indicated.