

Canadä

JOHN G. COOKE & ASSOCIATES LTD.
 CONSULTING ENGINEERS
 17 FITZGERALD ROAD SUITE 200 OTTAWA, ONT. K2H 9G1
 (613) 226-8718 FAX (613) 226-7424
 E-MAIL mailbox@jgcooke.com
 WEB SITE www.jgcooke.com

15174A

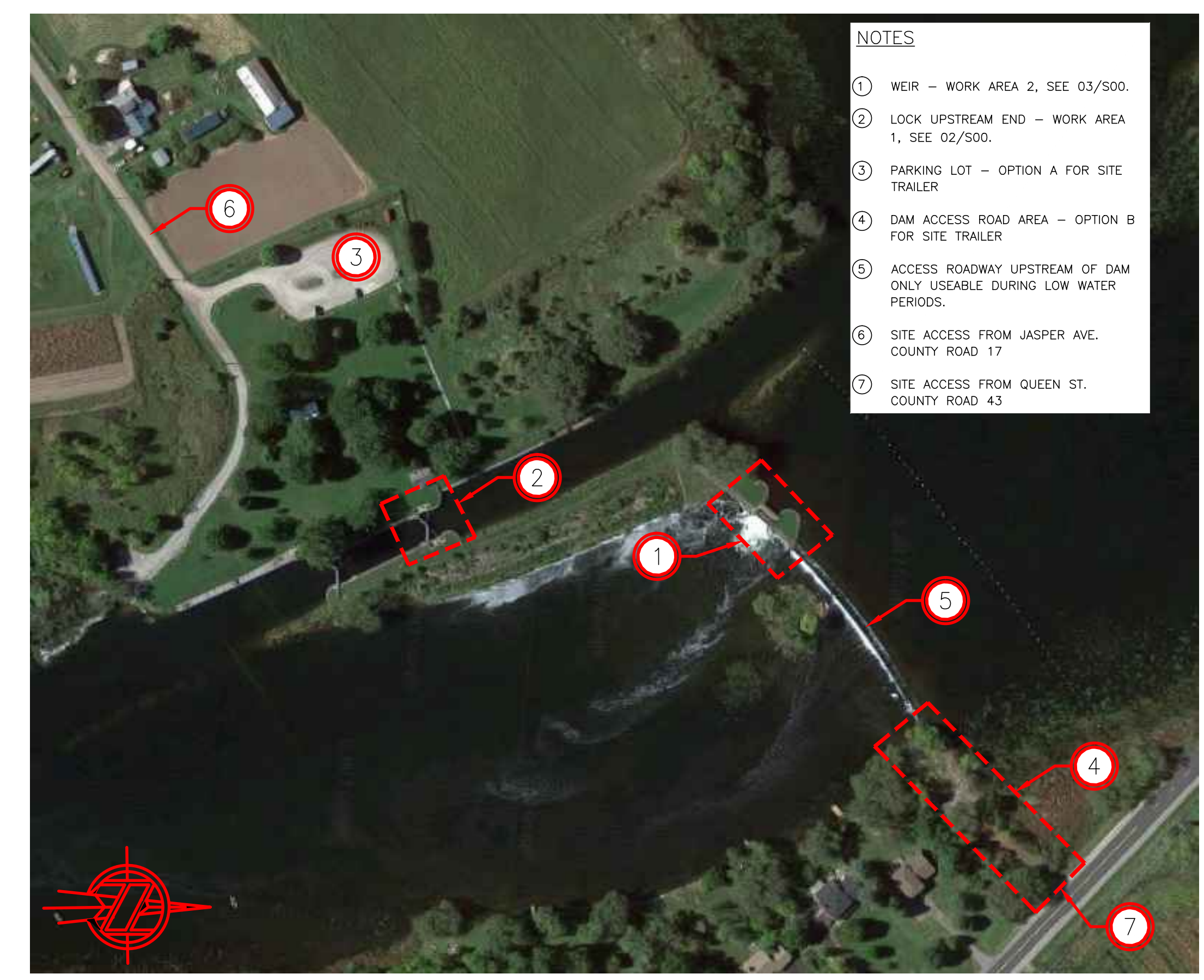
patersongroup
 consulting engineers

154 Colonnade Road South
 Ottawa, Ontario K2E 7J5
 Tel: (613) 226-7381 Fax: (613) 226-6344

WEIR - EDMOND'S LOCK MASONRY REHABILITATION

DRAWING LIST

- S00 GENERAL SITE OVERVIEW
- S01 SITE STAGING AND ACCESS PLAN
- S02 WEIR (AREA 2) PLAN AND ELEVATIONS
- S03 LOCK (AREA 1) PLAN AND ELEVATIONS
- S04 SECTIONS AND DETAILS
- S05 SECTIONS AND DETAILS
- S06 LOG SLIDE DETAILS FROM PARKS CANADA

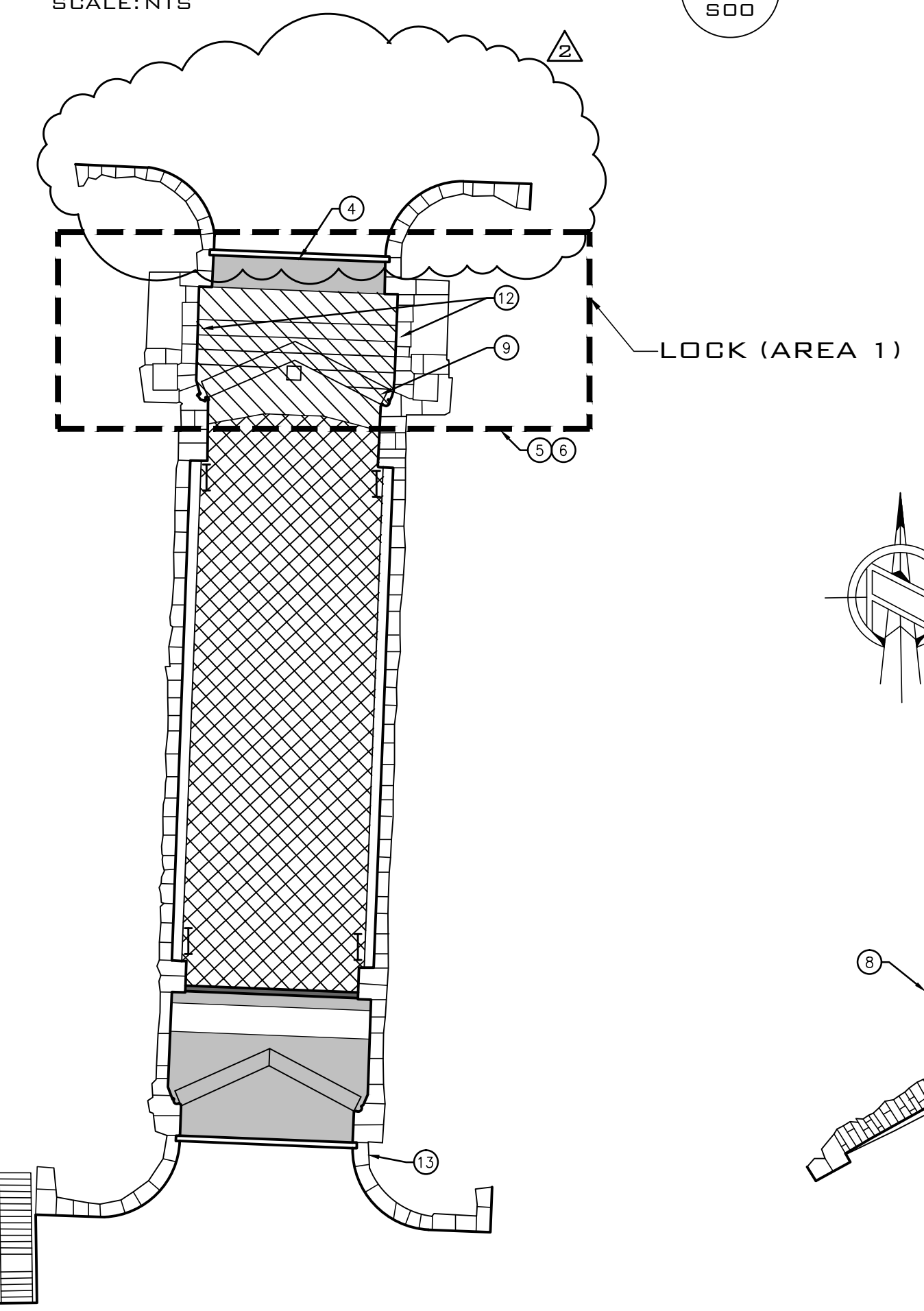


- NOTES**
- ① WEIR - WORK AREA 2, SEE 03/S00.
 - ② LOCK UPSTREAM END - WORK AREA 1, SEE 02/S00.
 - ③ PARKING LOT - OPTION A FOR SITE TRAILER
 - ④ DAM ACCESS ROAD AREA - OPTION B FOR SITE TRAILER
 - ⑤ ACCESS ROADWAY UPSTREAM OF DAM ONLY USEABLE DURING LOW WATER PERIODS.
 - ⑥ SITE ACCESS FROM JASPER AVE. COUNTY ROAD 17
 - ⑦ SITE ACCESS FROM QUEEN ST. COUNTY ROAD 43

KEY LOCATION PLAN
 SCALE: NTS

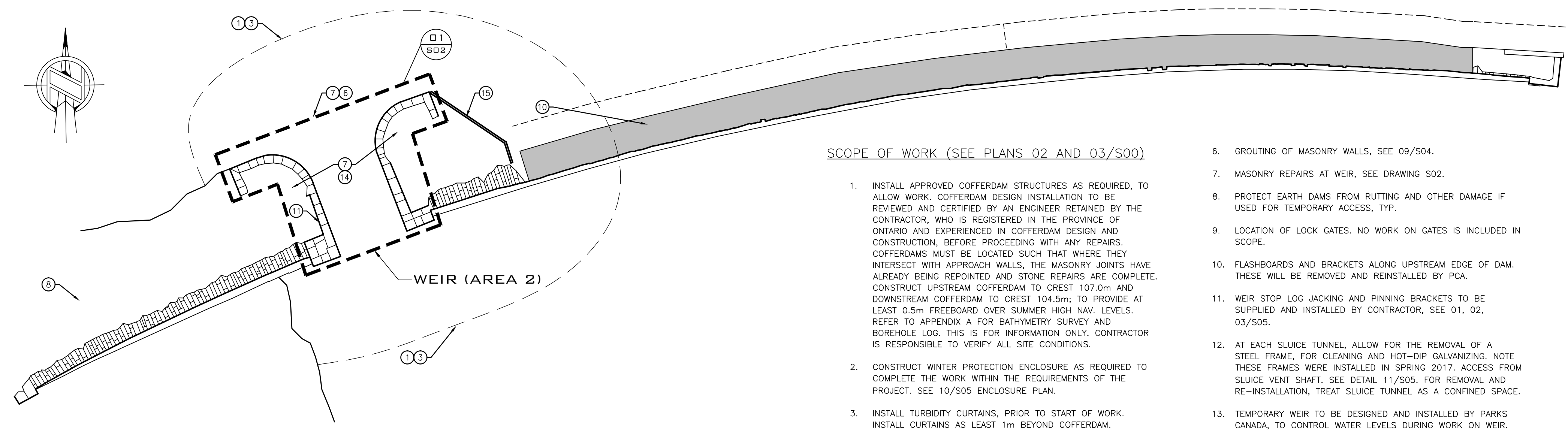
01
 S00

NOTE: FOR SITE STAGING AND ACCESS PLAN, SEE DRAWING S01.



LOCK PLAN: SCOPE OF WORK
 SCALE: 1:300 AREA 2: LOCK

02
 S00



WEIR PLAN: SCOPE OF WORK
 SCALE: 1:300 AREA 1: WEIR

03
 S00

SCOPE OF WORK (SEE PLANS 02 AND 03/S00)

1. INSTALL APPROVED COFFERDAM STRUCTURES AS REQUIRED, TO ALLOW WORK. COFFERDAM DESIGN INSTALLATION TO BE REVIEWED AND CERTIFIED BY AN ENGINEER RETAINED BY THE CONTRACTOR, WHO IS REGISTERED IN THE PROVINCE OF ONTARIO AND EXPERIENCED IN COFFERDAM DESIGN AND CONSTRUCTION, BEFORE PROCEEDING WITH ANY REPAIRS. COFFERDAMS MUST BE LOCATED SUCH THAT WHERE THEY INTERSECT WITH APPROACH WALLS, THE MASONRY JOINTS HAVE ALREADY BEEN REPOINTED AND STONE REPAIRS ARE COMPLETE. CONSTRUCT UPSTREAM COFFERDAM TO CREST 107.0m AND DOWNSTREAM COFFERDAM TO CREST 104.5m; TO PROVIDE AT LEAST 0.5m FREEBOARD OVER SUMMER HIGH NAV. LEVELS. REFER TO APPENDIX A FOR BATHYMETRY SURVEY AND BOREHOLE LOG. THIS IS FOR INFORMATION ONLY. CONTRACTOR IS RESPONSIBLE TO VERIFY ALL SITE CONDITIONS.
2. CONSTRUCT WINTER PROTECTION ENCLOSURE AS REQUIRED TO COMPLETE THE WORK WITHIN THE REQUIREMENTS OF THE PROJECT. SEE 10/S05 ENCLOSURE PLAN.
3. INSTALL TURBIDITY CURTAINS, PRIOR TO START OF WORK. INSTALL CURTAINS AS LEAST 1m BEYOND COFFERDAM.
4. STOP LOGS WILL BE INSTALLED BY PCA FOR THE DURATION OF THE AREA 1 WORK.
5. MASONRY REPAIRS AT LOCK MASONRY WALLS (WALLS WITHIN OUTLINE SHOWN). SEE DRAWINGS S03.
6. GROUTING OF MASONRY WALLS, SEE 09/S04.
7. MASONRY REPAIRS AT WEIR, SEE DRAWING S02.
8. PROTECT EARTH DAMS FROM RUTTING AND OTHER DAMAGE IF USED FOR TEMPORARY ACCESS, TYP.
9. LOCATION OF LOCK GATES. NO WORK ON GATES IS INCLUDED IN SCOPE.
10. FLASHBOARDS AND BRACKETS ALONG UPSTREAM EDGE OF DAM. THESE WILL BE REMOVED AND REINSTALLED BY PCA.
11. WEIR STOP LOG JACKING AND PINNING BRACKETS TO BE SUPPLIED AND INSTALLED BY CONTRACTOR, SEE 01, 02, 03/S05.
12. AT EACH SLUICE TUNNEL, ALLOW FOR THE REMOVAL OF A STEEL FRAME, FOR CLEANING AND HOT-DIP GALVANIZING. NOTE THESE FRAMES WERE INSTALLED IN SPRING 2017. ACCESS FROM SLUICE VENT SHAFT. SEE DETAIL 11/S05. FOR REMOVAL AND RE-INSTALLATION, TREAT SLUICE TUNNEL AS A CONFINED SPACE.
13. TEMPORARY WEIR TO BE DESIGNED AND INSTALLED BY PARKS CANADA, TO CONTROL WATER LEVELS DURING WORK ON WEIR. INSTALLATION MUST BE COMPLETE BEFORE INSTALLING COFFERDAM AT WEIR.
14. CAREFULLY EXCAVATE BEHIND WEIR MASONRY WALLS TO DEPTH OF 1.8m. CONSOLIDATE MASONRY WALL FROM BEHIND AND REPOINT. BACKFILL AND RESTORE LANDSCAPING, SEE 12/S05.
15. CONCRETE RETAINING WALL AT WEIR, TO BE REPAIRED. SEE PLAN 01/S02 AND DETAIL 03/S04.

15174A-S00 DRAWING 1 OF 7
 DRAWING NO. DRAWING NAME

REFERENCE DRAWINGS				
NO.	DATE	DESCRIPTION	Drawn by	Approved
2	2017/10/05	BID AMENDMENT #3	C.P.	N.J.
1	2017/08/25	ISSUED FOR BID	C.P.	N.J.

REVISIONS				
A	B	A	B	
Detail number	Sheet number	Numero de detail	Sur feuille numero	

Linear dimensions in millimeters / Dimensions lineaires en millimetres



Project title / Titre du projet
**WEIR - EDMOND'S LOCK
 MASONRY REHABILITATION**

Drawing title / Titre du dessin
**GENERAL SITE
 OVERVIEW**

Plot Scale / Echelle
 1:1 (Arch D 24x36 Plot Size)

Drawn by/ Dessine par: C.P. Date: 2017/02/10

Field Recording by / Relevé-Terminé par: P.C. & J.C. Date: 2015/12/21

Approved by / Approuve par: N.J. Date:

Checked by/ Verifie par: J.C. Date:

Project No./ No. du projet: 15174A Asset No.: Sheet No./ Feuille No.: S00
 Drawing Re No./No. du Dessin: 15174A-S00-R01