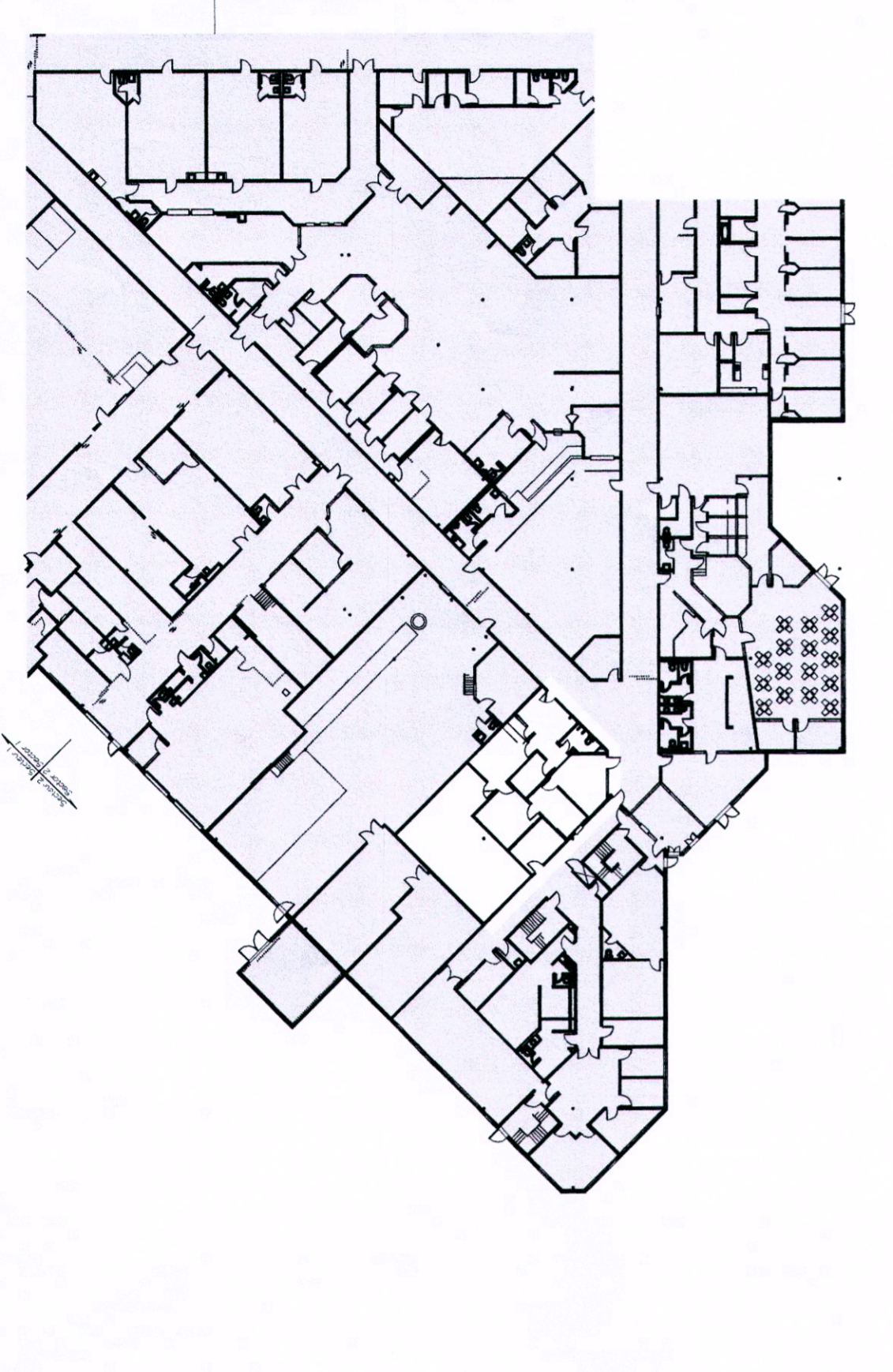


2017/09/28	APPEL D'OFFRE / TENDER - 100%	C.G.
5	1	8
DATE	EMIS POUR / ISSUED FOR	PROJET / PROJECT

ARCHITECTURE

TITRE DU DESSIN / DRAWING TITLE
PLANS DÉMOLITION/CONSTRUCTION
 SECTEUR 2 | REZ-DE-CHAUSSEE
DEMOLITION & NEW FLOOR PLAN
 SECTOR 2 | GROUND FLOOR

Contenu de l'ouvrage	Classe
Dessin de base	100%
Version	01
N. de plan	01-100
Date	1/10/2017
Échelle	1:100
Projet	A.5739
Architecte	CAROLINE GIRARD
Département	Québec



01 KEY PLAN
 SECTOR 2 _ GROUND FLOOR
 ÉCH. 1: 500

GENERAL NOTES (PAGE A201 ONLY)

1. PERFORM DEMOLITION OF WORK IN THE STATE AT WHICH IT IS FOUND ON DRAWING. ALL MATERIALS TO BE REMOVED SHALL BE UNLESS OTHERWISE INDICATED. ALL DEMOLITION WORK SHALL BE PERFORMED IN SUCH A WAY THAT NEW FINISHES CAN BE INSTALLED AFTERWARD.
2. UNLESS OTHERWISE INDICATED, ALL ACCESSORIES AND EQUIPMENT INSTALLED ON WALL SHALL BE REMOVED. HOLES LEFT AFTER REMOVAL SHALL BE PATCHED TO MATCH ADJACENT SURFACES.
3. ALL DRAWINGS AND SPECIFICATIONS, EVEN IF ONLY PARTIAL, FOUND IN THE BID DOCUMENTS OF ALL DISCIPLINES, A PART OF A WHOLE, IN CONNECTION WITH THIS WORK SHALL BE APPLIED TO THIS WORK. ALL DISCREPANCY WORK MUST BE COMPLETED WITHOUT EXCEPTION, BY THE APPROPRIATE CONTRACTORS FOR EACH TASK OR SPECIALTY.
4. IN ADDITION TO THE OPENINGS INDICATED IN ARCHITECTURAL DRAWINGS, MECHANICAL AND ELECTRICAL PLANS, MAKE ALL OTHER OPENINGS REQUIRED FOR THE PERFORMANCE OF WORK AND PATCH OPENINGS AFTERWARD.
5. USE PRECAUTIONS AS REQUIRED TO ENSURE ACOUSTIC INTEGRITY OF ALL ROOMS INVOLVED IN WORK. SEAL ALL OPENINGS AND JOINTS TO SEAL 2.5x4 OF OPENINGS.
6. AFTER REMOVAL OF EXISTING FLOOR FINISHES, REMOVE ALL GUE RESIDUE AND PREPARE SURFACE APPROPRIATELY FOR NEW FLOOR FINISHES.
7. PAINT ALL VISIBLE WALL SURFACES IN ROOMS INCLUDED WITHIN THE SCOPE OF WORK. IN ADDITION, PAINT WALLS IN ADJACENT ROOMS TO BE DEMOLISHED SO THAT THEY REMAIN OPERATIONAL AT ALL TIMES. MAKE AN APPOINTMENT TO PROTECT ADJACENT ROOMS. BLOCK UP EXISTING DOOR FRAME. MINIMUM SIZE AS REQUIRED FOR THE WORK. SEE ENG. DOC.
8. REMOVE HALF BLOCKS OF CONCRETE AT PERIMETER OF DOOR AND WINDOW FRAMES IN ORDER TO ALLOW NEW BLOCKS TO BE INSTALLED. REMOVE EXISTING BLOCKS DURING BLOCKING UP OF THE OPENINGS.
9. DEMOLISH CONCRETE BLOCK WALL UP TO DECK (E 3.1, 3.2mm)
10. DELIVER KEY BOX TO ESTABLISHMENT
11. RELOCATE PHOTO-COPYER
12. REMOVE EXISTING FURNITURE
13. DEMOLISH METAL CORNER PROTECTION
14. BLOCK UP EXISTING DOOR, DOOR AND FRAME TO REMAIN.

DEMOLITION NOTES (PAGE A201 ONLY)

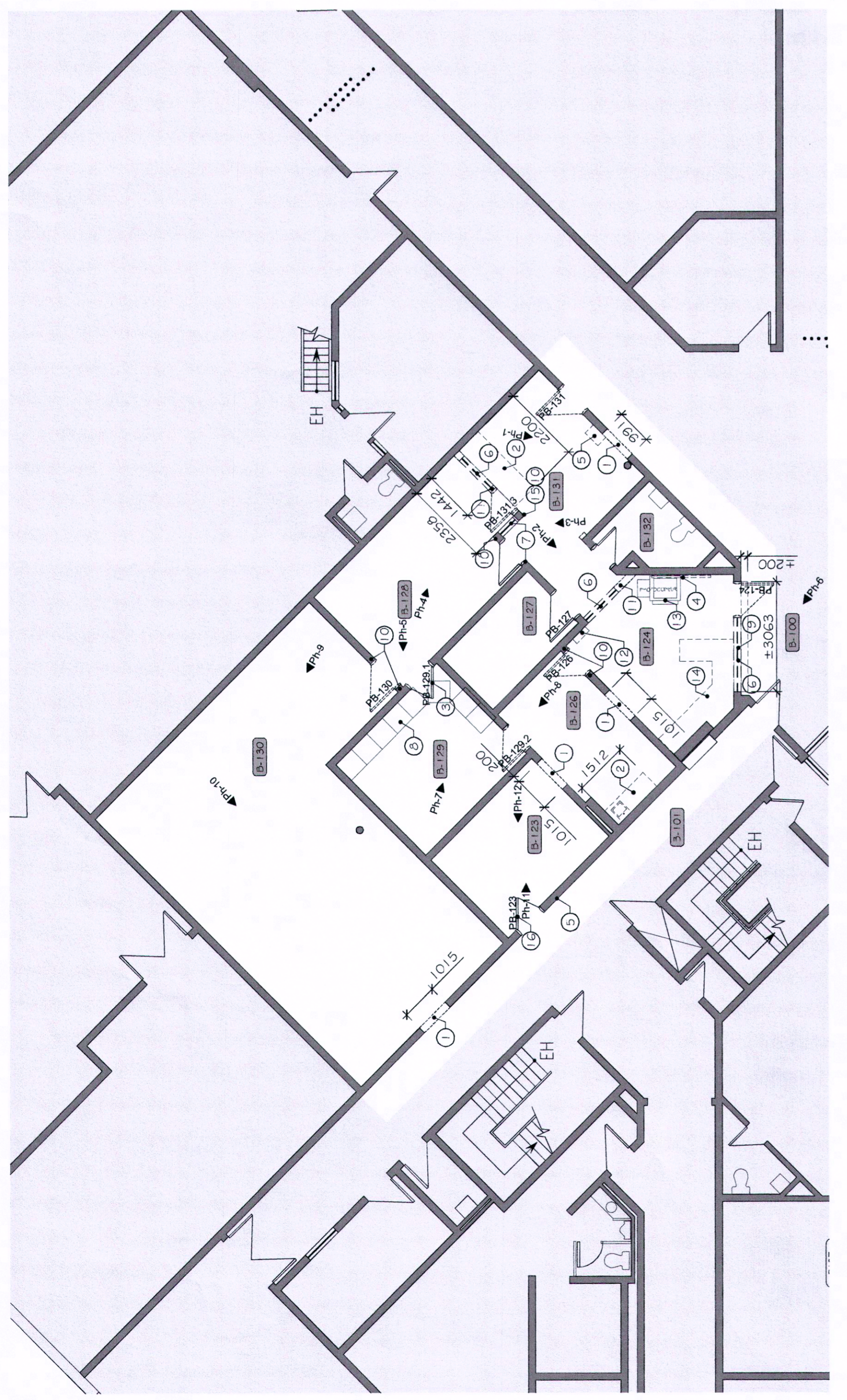
1. MAKE OPENING IN CONCRETE BLOCK WALL FOR NEW DOOR FRAME. SEE ENG. DOC.
2. DEMOLISH COUNTER
3. BLOCK UP EXISTING DOOR, REMOVE DOOR AND FRAME TO REMAIN.
4. REMOVE PLAT SCREEN AND DELIVER TO ESTABLISHMENT
5. REMOVE EXISTING ACCESSORY AND DELIVER TO ESTABLISHMENT
6. DEMOLISH FRAME AND WINDOW DOORS AND WINDOW FRAME TO REMAIN. DEMOLISH GLAZING AND BLOCK UP WINDOW OPENING.
7. RELOCATE EXISTING (E) EXISTING LOCKERS
8. DISMANTLE ROWS OF BLOCK (E 3900mm HIGH) OVER WINDOW FRAME UP TO CONCRETE STRUCTURE. REMOVE ALL CONDITIONS THAT PASS THROUGH THE AREA OPERATIONAL AT ALL TIMES. MAKE AN APPOINTMENT TO PROTECT ADJACENT ROOMS. MINIMUM SIZE AS REQUIRED FOR THE WORK. SEE ENG. DOC.
9. REMOVE HALF BLOCKS OF CONCRETE AT PERIMETER OF DOOR AND WINDOW FRAMES IN ORDER TO ALLOW NEW BLOCKS TO BE INSTALLED. REMOVE EXISTING BLOCKS DURING BLOCKING UP OF THE OPENINGS.
10. DEMOLISH CONCRETE BLOCK WALL UP TO DECK (E 3.1, 3.2mm)
11. DELIVER KEY BOX TO ESTABLISHMENT
12. RELOCATE PHOTO-COPYER
13. REMOVE EXISTING FURNITURE
14. DEMOLISH METAL CORNER PROTECTION
15. BLOCK UP EXISTING DOOR, DOOR AND FRAME TO REMAIN.

CONSTRUCTION NOTES (PAGE A201 ONLY)

- A. ACCESS CONTROL SYSTEM AND TIMECLOCK (SEE ENG. DOC)
- B. FILE CABINET NOT IN CONTRACT
- C. FURNITURE NOT IN CONTRACT
- D. RELOCATED EXISTING FILE CABINETS
- E. NEW TYPE (E) CONCRETE BLOCK WALL OVER NEW INTERIOR WINDOW FRAME AND FACTALLY IN DOOR OPENING TO BE BLOCKED UP. REBUILD DETAIL AT THE TOP OF THE WALL AT EXISTING JUNCTION SUCH AS ADJACENT DETAIL.
- F. PAINT STEEL COLUMN
- G. JOINTION OF NEW BLOCK WALL WITH PERPENDICULAR EXISTING BLOCK WALL. SEE ENG.
- H. RELOCATED PHOTO-COPYER
- I. SECTION OF GYPSUM CEILING TO PATCH AND PAINT FOLLOW-UP TO THE WORK.

LEGEND

EXISTING PARTITION WALL TO REMAIN
 PARTITION WALL TO BE DEMOLISHED
 NEW PARTITION WALL
 EXISTING DOOR AND FRAME TO REMAIN
 EXISTING DOOR AND FRAME TO BE DEMOLISHED
 EXISTING DOOR AND FRAME TO BE REINSTALLED ELSEWHERE
 NEW DOOR AND FRAME
 EXISTING ROOM NUMBER
 NEW ROOM NUMBER
 TYPICAL PARTITION WALL. SEE TYPICAL WALL SECTION, PAGE A701
 DOOR NUMBER. SEE DOOR SCHEDULE, PAGE A701
 SEE PHOTO NUMBER INDICATED ON PAGE A501
 PHOTO NUMBER. SEE DOOR SCHEDULE, PAGE A701
 PAINTED BLOCK WALL TO BE REPAINTED
 CONCRETE WALL TO BE PAINTED
 FURNITURE - NOT IN CONTRACT
 FURNITURE EQUIPMENT TO REMAIN



02 DEMOLITION PLAN _ GROUND FLOOR
 SECTOR 2 _ OPERATIONAL OFFICES
 ÉCH. 1: 100

