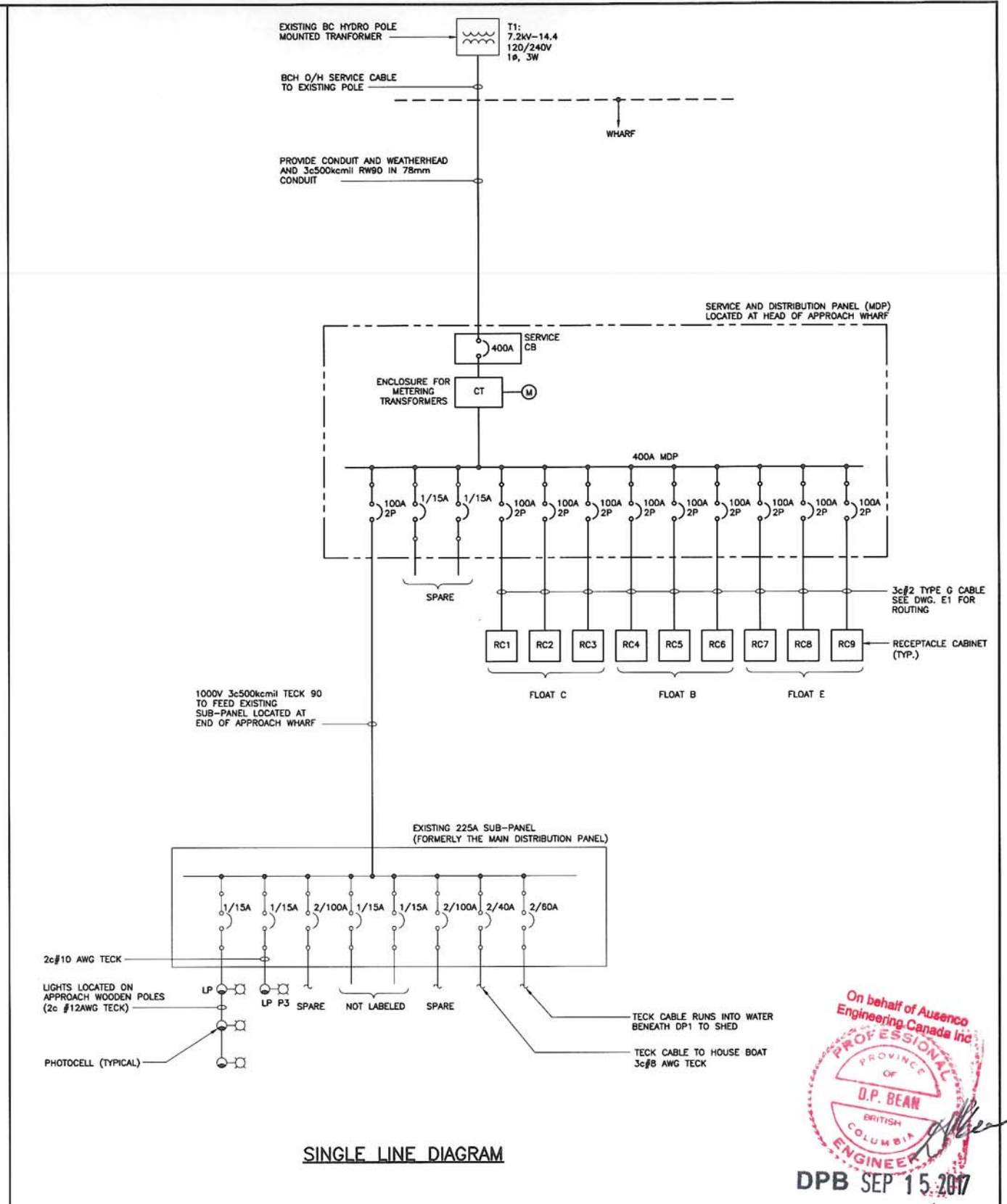


EXISTING ELECTRICAL SINGLE LINE DIAGRAM
 ① 125V 20A TWIST LOCK RECEPTACLE TYPICAL WITH 15A BREAKER EXCEPT NOTED IN PED RC6



SINGLE LINE DIAGRAM

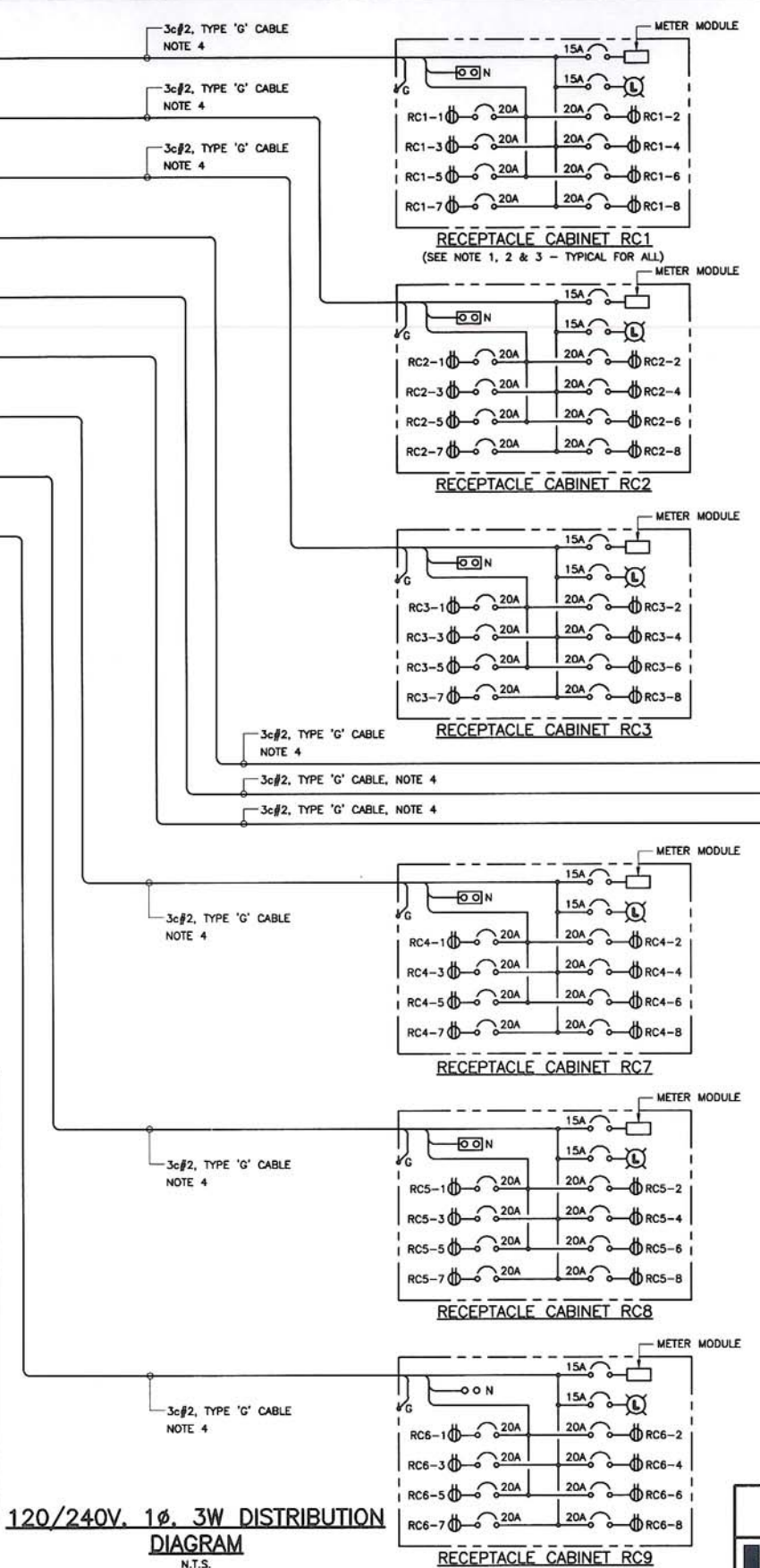
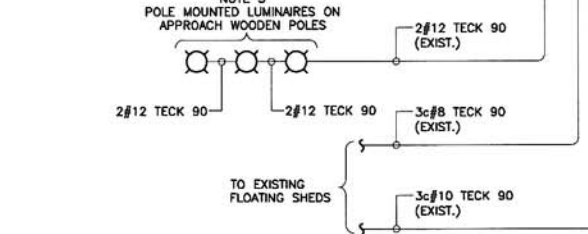
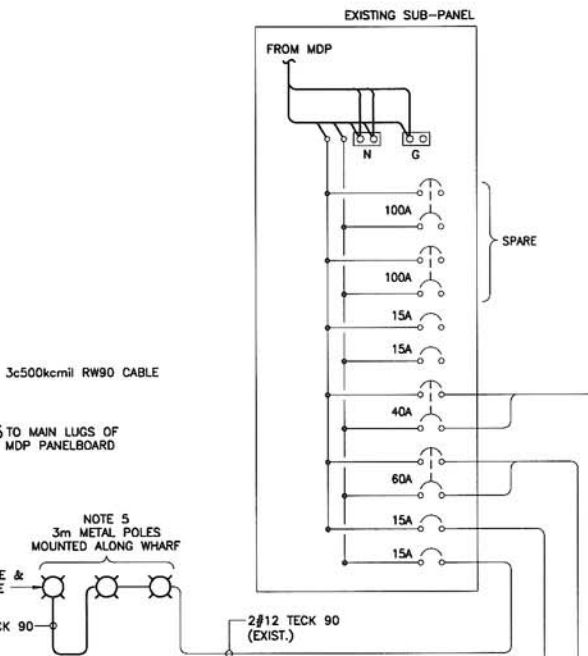
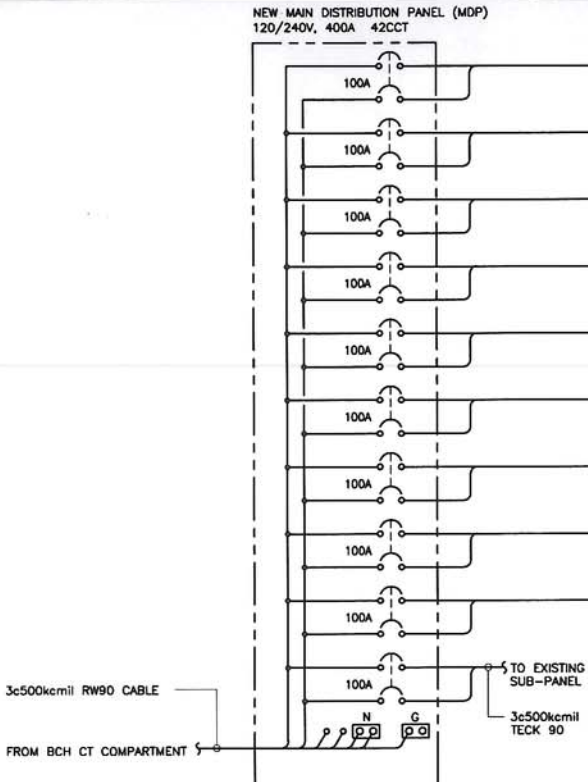
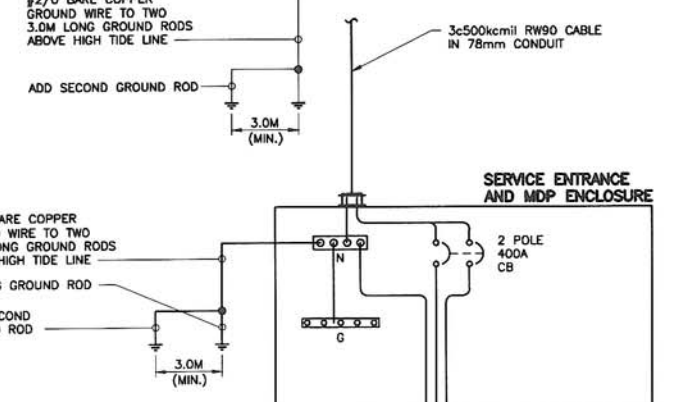
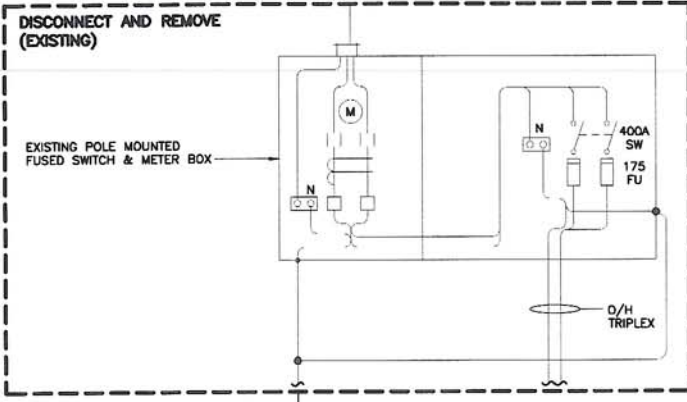
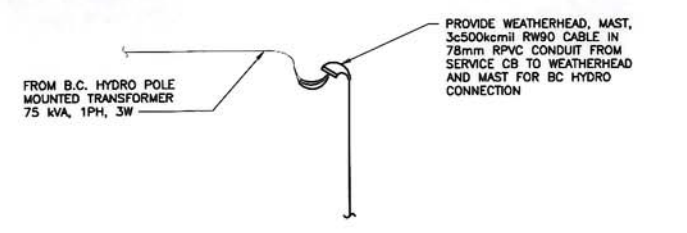
On behalf of Ausenco
 Engineering Canada Inc.
 PROFESSIONAL
 OF
 O.P. BEAN
 BRITISH
 COLUMBIA
 ENGINEER
 DPB SEP 15 2017

| | |
|---|---------------------|
| Ausenco | |
| FISHERIES AND OCEANS CANADA SMALL CRAFT HARBOURS | |
| HARBOUR UPGRADE BELLA BELLA - MARTINS COVE, B.C. SINGLE LINE DIAGRAMS | |
| SCALE AS NOTED | DATE 27-NOV-2013 |
| DRAWING NUMBER 100247-E2A | REVISION 0 |

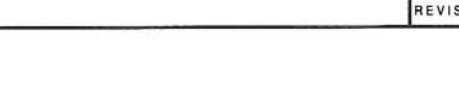
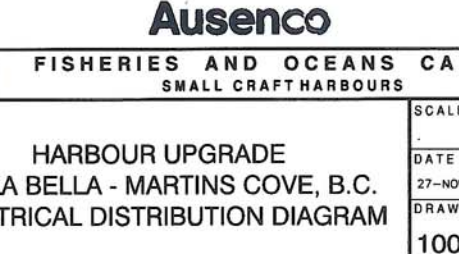
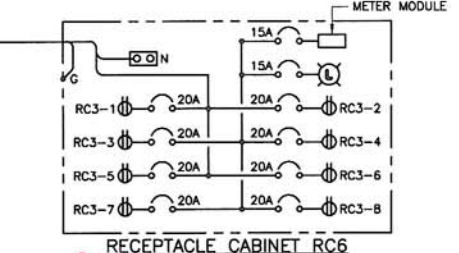
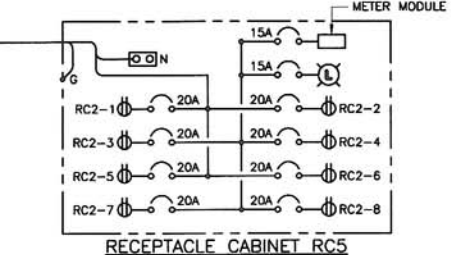
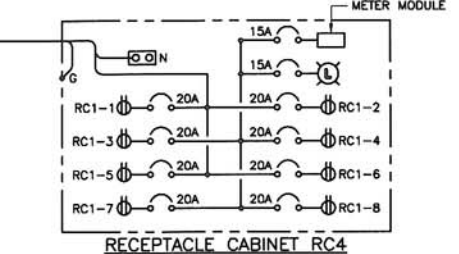
| | | | |
|-----------------|-----|---------|---------------------|
| DESIGNED PJS | 0 | 14SEP17 | ISSUED FOR TENDER |
| DRAWN LT | P1 | 19DEC13 | ISSUED FOR COMMENTS |
| CHECKED DPB | | | |
| RECOMMENDED | | | |
| APPROVED | | | |
| APPROVED | | | |
| | NO. | DATE | REVISIONS |

| | |
|----------|--------------------------|
| DWG. NO. | DRAWING REFERENCES |
| - E1 | HARBOUR PLAN AND DETAILS |

NOTES

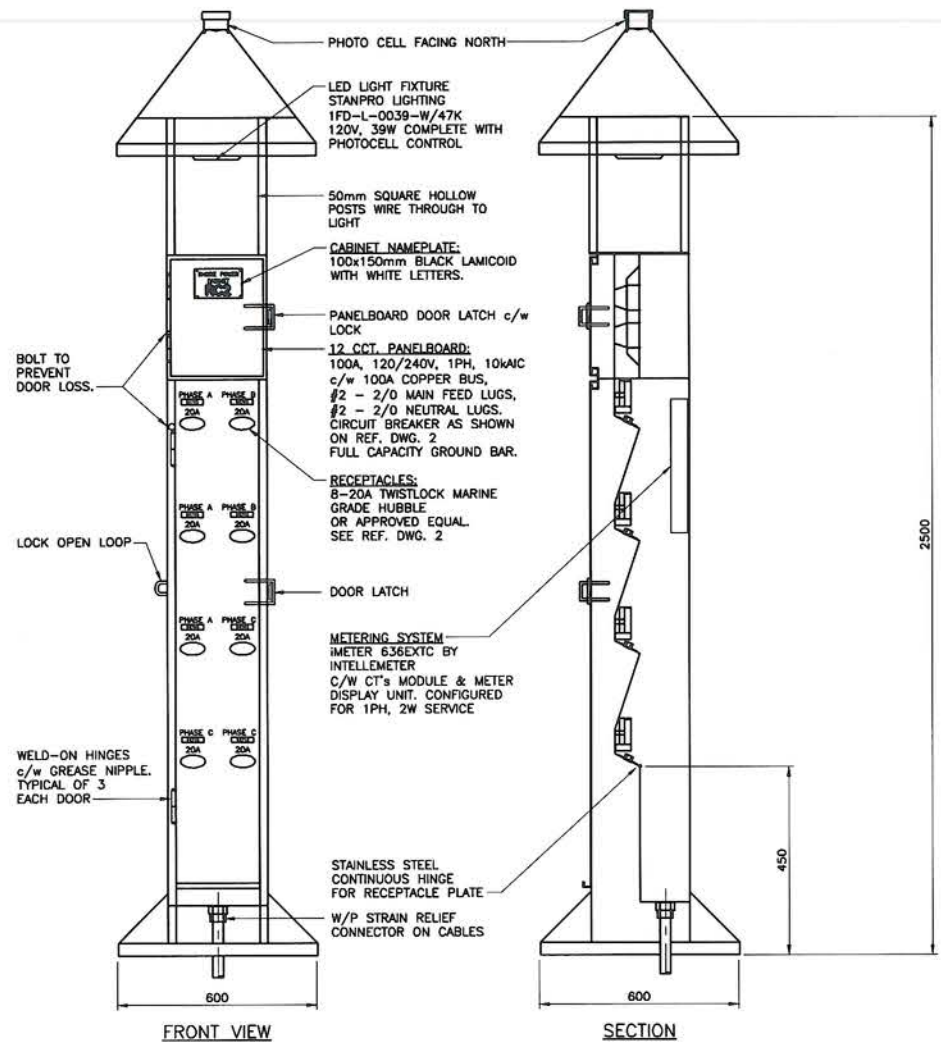


- NOTES:**
CONTRACTOR SHALL SUPPLY AND INSTALL THE FOLLOWING:
- ADD LAMACOID NAMEPLATES TO RECEPTACLE CABINETS AND CIRCUIT BREAKER POSITIONS AS SHOWN. SEE REF. DWG. -E3 FOR MOUNTING DETAILS.
 - RECEPTACLE CABINETS ARE SUPPLIED BY OTHERS, ASSEMBLED INSTALLED BY CONTRACTOR TO MATCH EXISTING LOCATIONS.
 - ALL RECEPTACLE CABINETS CIRCUIT BREAKERS ARE SINGLE POLE 20A AND RECEPTACLES ARE TYPE L5-20R TWIST LOCK.
 - 3c#2, TYPE G CABLE TO RECEPTACLE CABINETS. ROUTE ALL CABLES UNDER GANGWAY IN RIGID PVC CONDUIT C/W BELL ENDS WHERE CABLES EXIT CONDUITS UNDER GANGWAY. SEE DETAIL REF. DWG. -E1.
 - REPLACE ALL POLE MOUNTED LUMINAIRES ON APPROACH AND ON FLOAT A. ADD SQUARE METAL 3m POLE & LUMINAIRE WHERE SHOWN ON REF. DWG. -E1.
LUMINAIRES SHALL BE AS FOLLOWS:
STANPRO TYPE KL ROADWAY LED,
4500K COLOUR TEMP, 120VAC, 50W
CAT. KL-50-G-3-W-GY/PR C/W PHOTOCELL RECEPTACLE.
 - ADD BREAKERS TO MAIN BREAKER PANEL. SIZES AS SHOWN. THOSE NOT MARKED EXISTING ARE NEW.

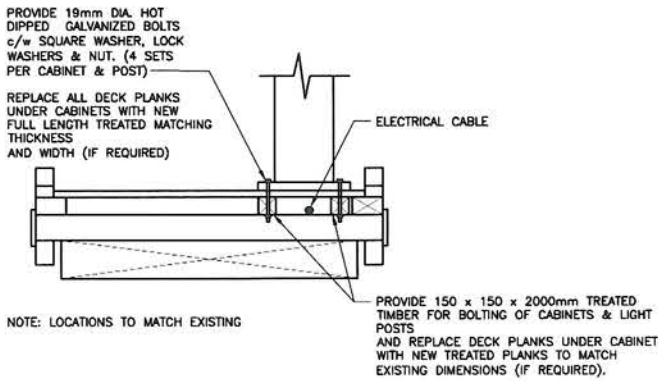


NOTES

1. RECEPTACLE CABINETS WILL BE SUPPLIED BY OTHERS AS A COMPLETE ASSEMBLED UNIT. ELECTRICAL COMPONENTS INCLUDE LED LUMINAIRE, PANELBOARD, CIRCUIT BREAKERS AND RECEPTACLES.
2. CONTRACTOR TO INSTALL RECEPTACLE CABINETS IN SAME LOCATION AS EXISTING. REPLACE DECK PLANKS UNDER CABINETS WITH SAME IF REQUIRED.



METERED RECEPTACLE CABINET
(NOTE 1, 2)



TYPICAL RECEPTACLE & LIGHT POST
CABINET
ON FLOAT DETAIL

On behalf of Ausenco
Engineering Canada Inc.

PROFESSIONAL
ENGINEER
D.P. BEAN
BRITISH COLUMBIA

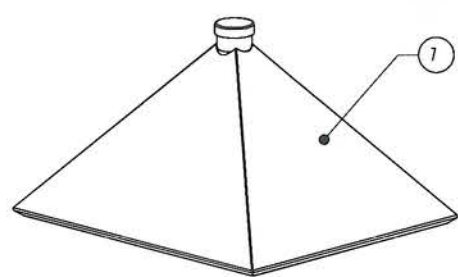
DPB SEP 15 2017

| DWG. NO. | DRAWING REFERENCES | NOTES | NO. | DATE | REVISIONS |
|----------|---|-------|-----|---------|-----------------------------|
| -E2B | BELLA BELLA HARBOUR - ELECT. DISTRIBUTION DIAG. | | 0 | 14SEP17 | ISSUED FOR TENDER |
| -E1 | BELLA BELLA HARBOUR - PLAN DETAILS | | P2 | 19DEC13 | REVISED PER CLIENT COMMENTS |
| | | | P1 | 27NOV13 | ISSUED FOR COMMENTS |

Ausenco
FISHERIES AND OCEANS CANADA
SMALL CRAFT HARBOURS

**HARBOUR UPGRADE
BELLA BELLA - MARTINS COVES B.C.
RECEPTACLE CABINET
DETAILS**

SCALE
DATE
27-NOV-2013
DRAWING NUMBER
100247-E3
REVISION
0

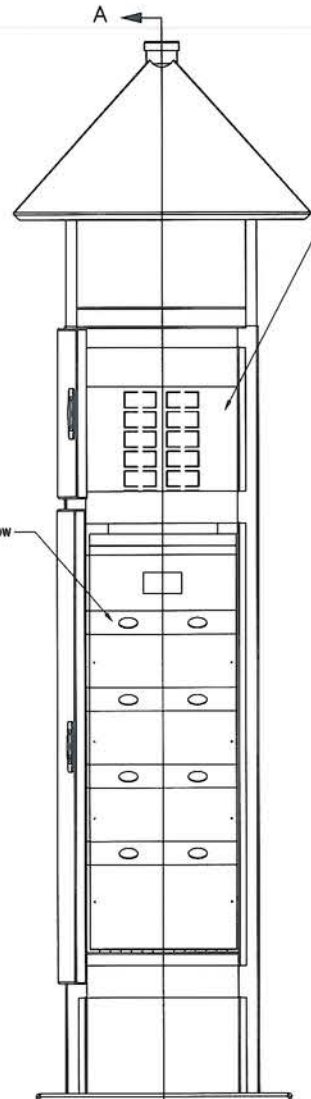
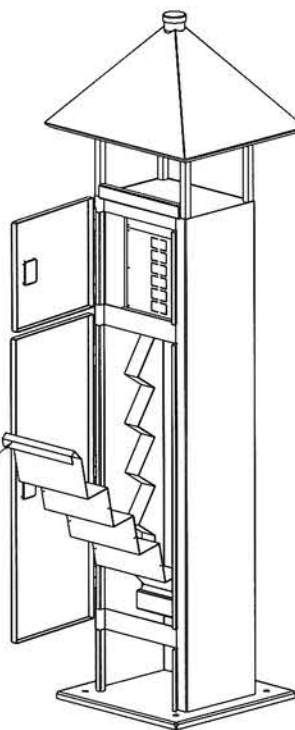
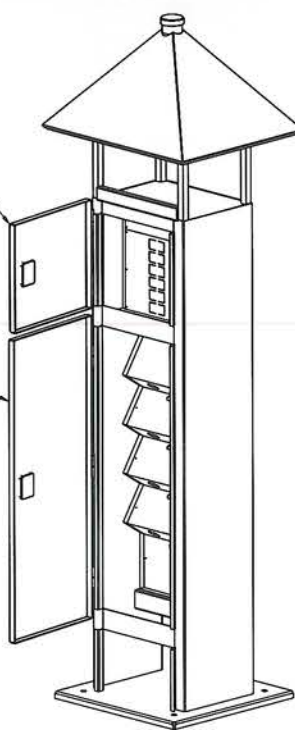
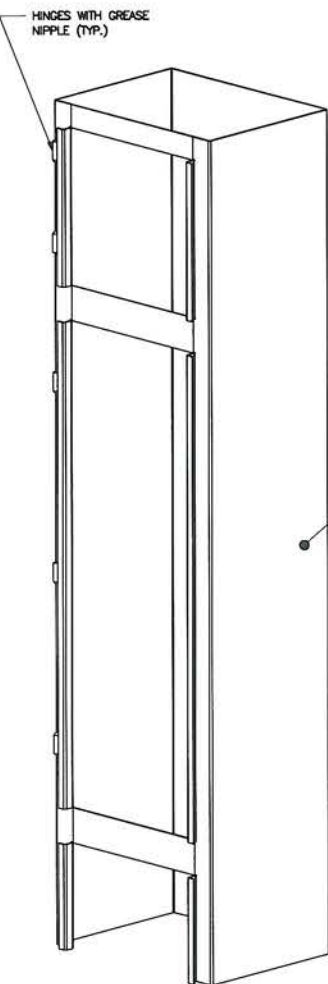
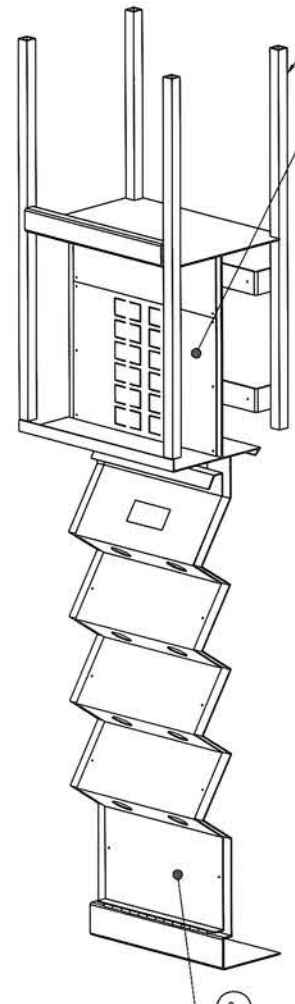
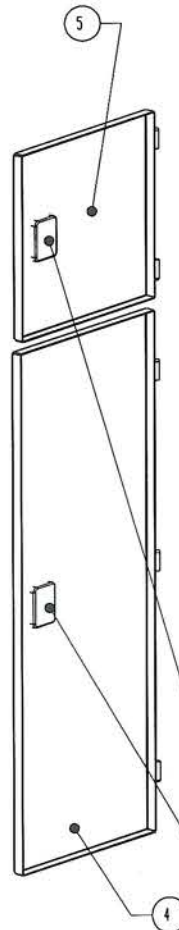


DOORS ARE TETHERED WITH 1/16" S.S. CABLE NOT TO OPEN BEYOND 100°

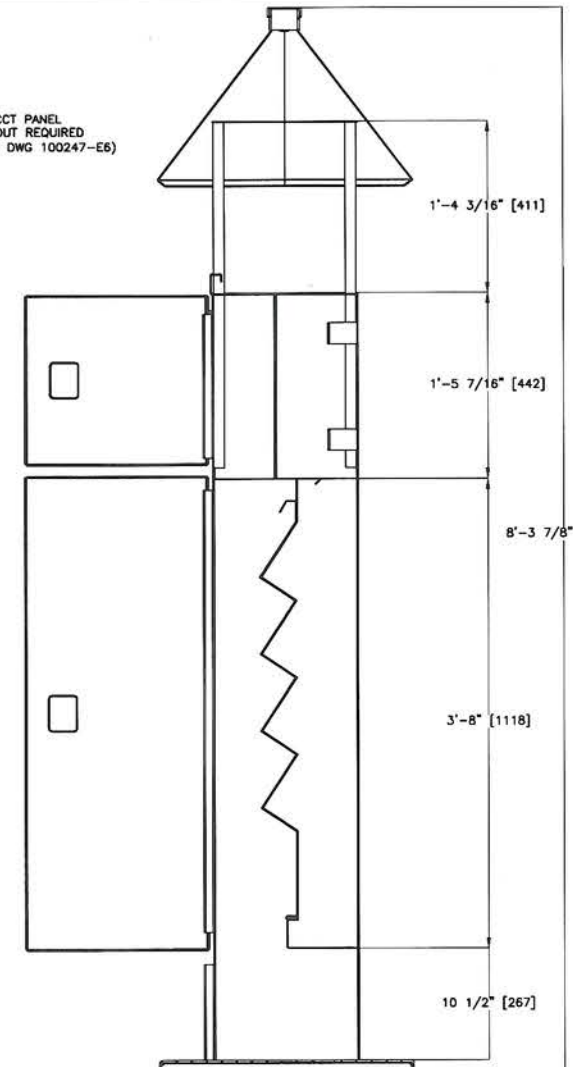
DOOR HINGES MAY BE LOCATED ON EITHER SIDE OF THE CABINET IN CONSIDERATION OF WIND DIRECTION AT THE SUBJECT HARBOUR. CONSULTATION WITH THE ENGINEER IS REQUIRED

NOTE:
KIOSK FABRICATOR TO INSTALL ALL ELECTRICAL DEVICES (SEE DWG. -E3) AND HAVE COMPLETED PANEL INSPECTED, ELECTRICALLY CERTIFIED AND LABELED BY AN AUTHORIZED AGENCY.

| ITEM NO. | DWG No. | DESCRIPTION | Default/ QTY. |
|----------|---------|------------------------|---------------|
| 1 | E5 | BASE PLATE | 1 |
| 2 | E5 | BOX SECTION ASSEMBLY | 1 |
| 3 | E6 | HINGED PLATE ASSEMBLY | 1 |
| 4 | E5 | LOWER DOOR ASSEMBLY | 1 |
| 5 | E5 | UPPER DOOR ASSEMBLY | 1 |
| 6 | E5 | BREAKER PANEL ASSEMBLY | 1 |
| 7 | E7 | ROOF CAP ASSEMBLY | 1 |
| 8 | E7 | ROOF SUPPORTS | 4 |



12 CCT PANEL CUTOUT REQUIRED (SEE DWG 100247-E6)



SECTION A-A
SCALE 1 : 8

STAINLESS STEEL KEYED ALIKE RECESSED T HANDLE LOCKS, LIP AND WEATHER STRIPPING ALL AROUND DOORS. TYP. ALL DOORS, INSTALL AS PER MANUFACTURERS INSTRUCTIONS.

HINGED PLATE FOR RECEPTICALS

2 RECEPTACLES PER ROW

On behalf of Ausenco Engineering Canada Inc
PROFESSIONAL ENGINEER
OF
D.P. BEAN
BRITISH COLUMBIA

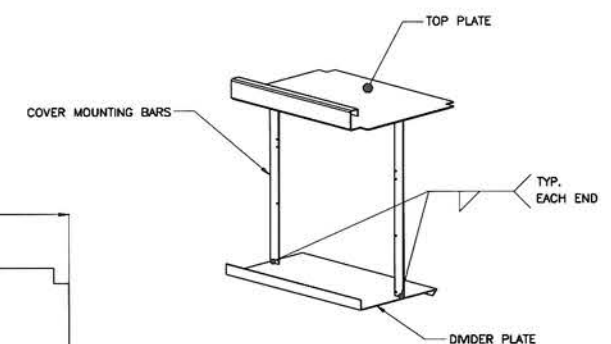
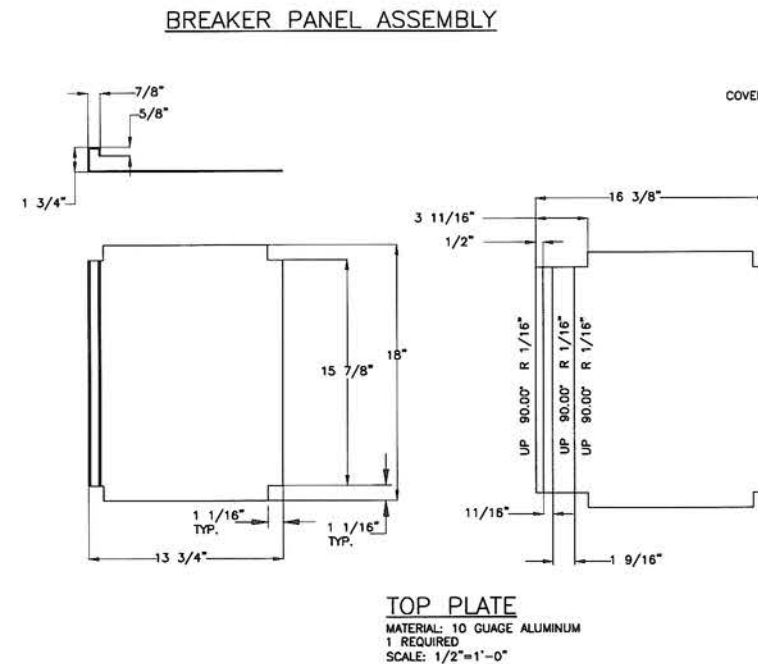
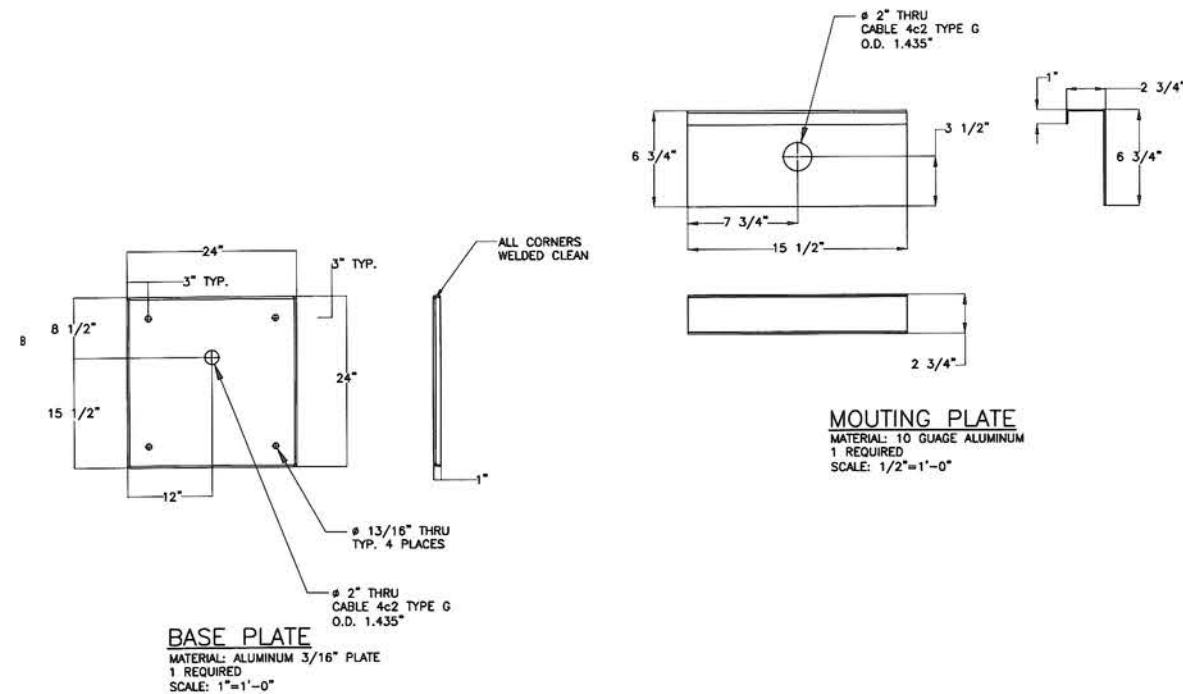
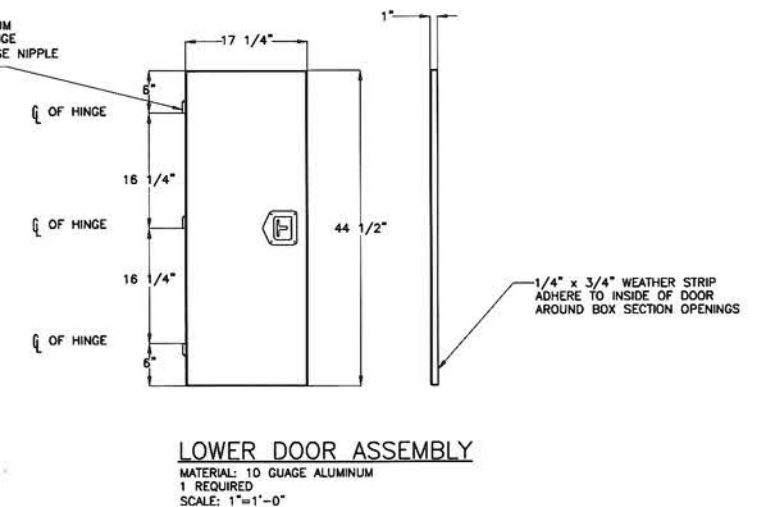
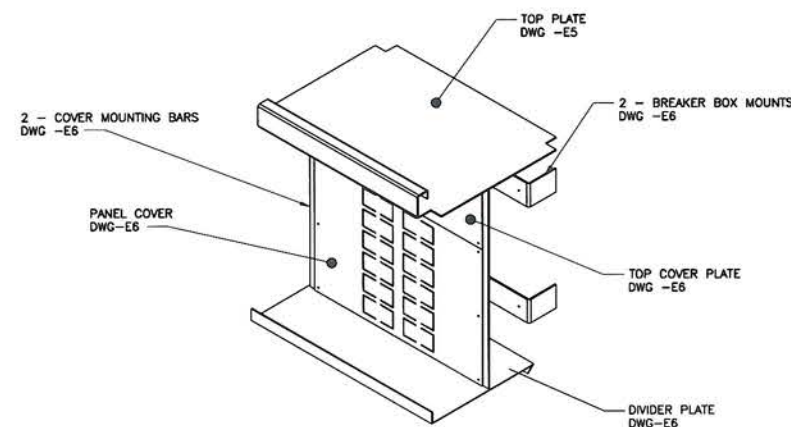
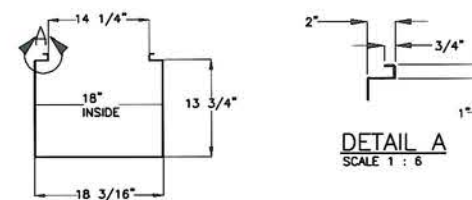
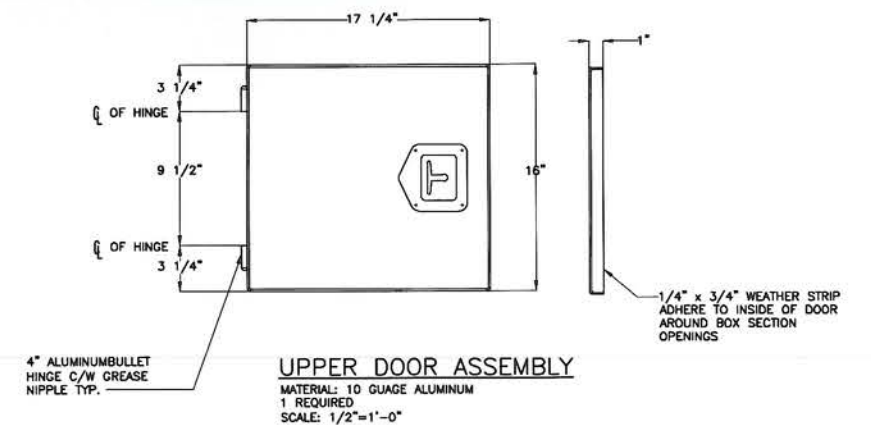
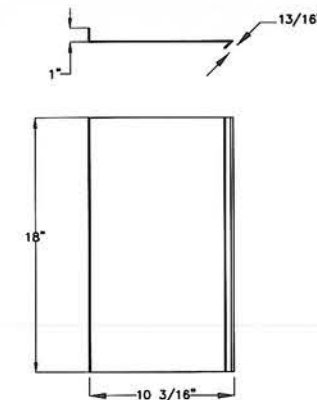
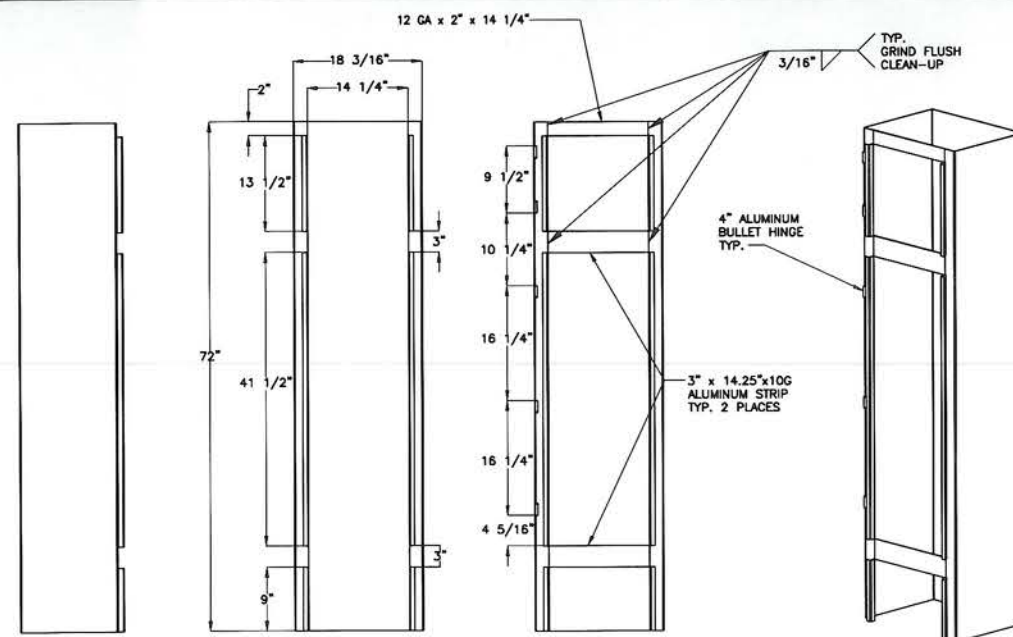
DPB SEP 15 2017

Ausenco
FISHERIES AND OCEANS CANADA
SMALL CRAFT HARBOURS

HARBOUR UPGRADE
BELLA BELLA - MARTINS COVE, B.C.
ALUMINUM KIOSK
DETAILS

SCALE
AS NOTED
DATE
27-NOV-2013
DRAWING NUMBER
100247-E4
REVISION
0

| DWG. NO. | DRAWING REFERENCES | NOTES | NO. | DATE | REVISIONS |
|----------|----------------------------|-------|-----|---------|-----------------------------|
| -E3 | RECEPTACLE CABINET DETAILS | | 0 | 14SEP17 | ISSUED FOR TENDER |
| | | | P2 | 19DEC13 | REVISED PER CLIENT COMMENTS |
| | | | P1 | 27NOV13 | ISSUED FOR COMMENTS |



On behalf of Ausenco Engineering Canada Inc.

PROFESSIONAL

PROVINCE OF


D.P. BEAM

BRITISH COLUMBIA

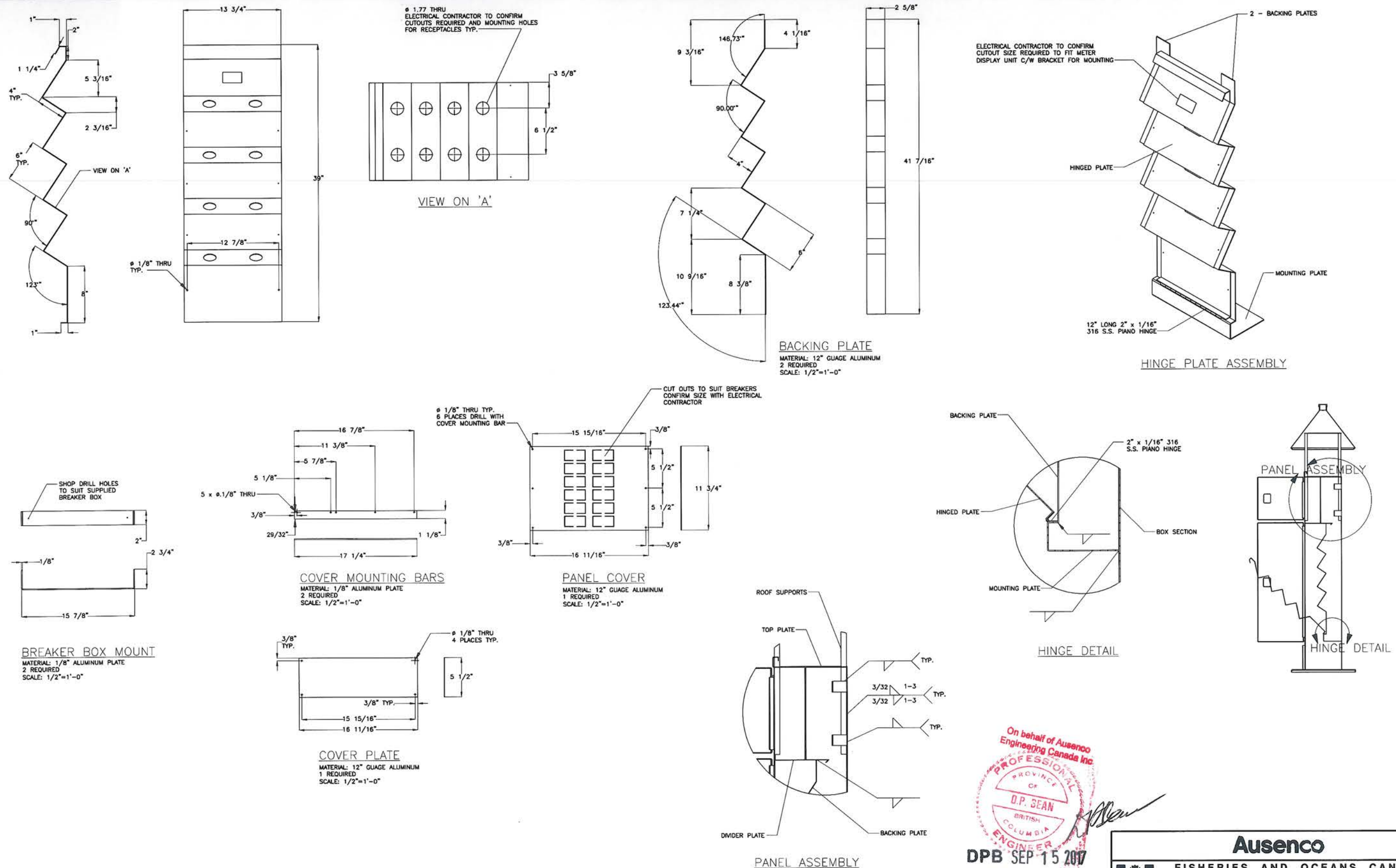
ENGINEER

[Signature]

DPB SEP 15 2017

| | |
|--|------------------------------------|
| <h1>Ausenco</h1> | |
|  <h2>FISHERIES AND OCEANS CANADA</h2> <h3>SMALL CRAFT HARBOURS</h3> | |
| <h1>HARBOUR UPGRADE</h1> <h2>BELLA BELLA, MARTINS COVE, B.C.</h2> <h3>ALUMINUM KIOSK</h3> <h3>DETAILS</h3> | SCALE AS NOTED |
| | DATE 27-NOV-2013 |
| | DRAWING NUMBER 100247-E5 |
| | REVISION |

[illegible]



On behalf of Ausenco Engineering Canada Inc.

PROFESSIONAL ENGINEER

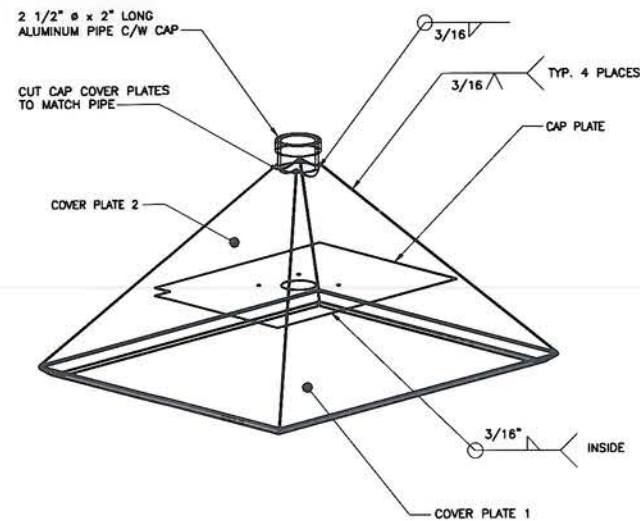
PROVINCE OF BRITISH COLUMBIA

D.P. SEAN

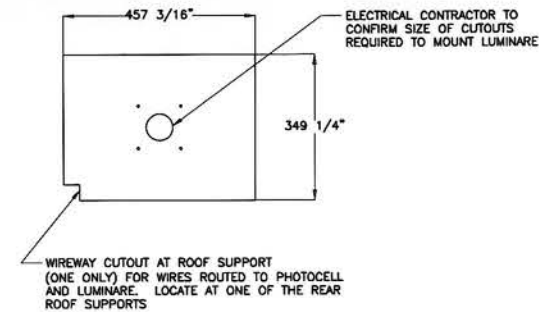
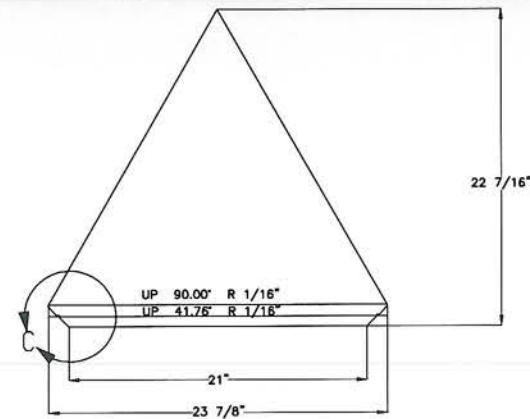
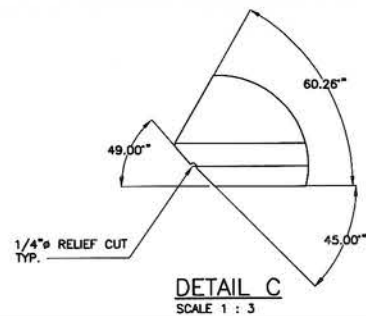
SEP 15 2017

| Ausenco | | FISHERIES AND OCEANS CANADA SMALL CRAFT HARBOURS | |
|--|--|---|----------------|
| HARBOUR UPGRADE BELLA BELLA - MARTINS COVE, B.C. ALUMINUM KIOSK DETAILS | | SCALE AS NOTED | DATE |
| | | 27-NOV-2013 | DRAWING NUMBER |
| | | 100247-E6 | REVISION |
| | | 0 | |

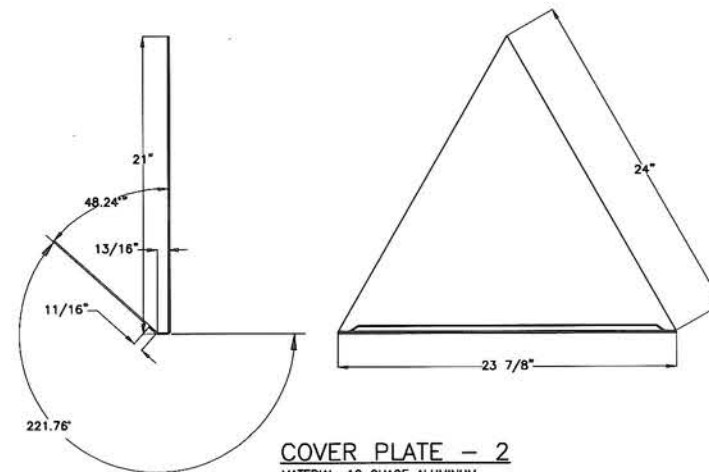
| DWG. NO. | DRAWING REFERENCES | NOTES | NO. | DATE | REVISIONS | DESIGNED PJS | DRAWN LT | CHECKED DPB | RECOMMENDED | APPROVED | APPROVED |
|----------|--------------------|-------|-----|---------|-----------------------------|-----------------|-------------|----------------|-------------|----------|----------|
| | | | 0 | 14SEP17 | ISSUED FOR TENDER | | | | | | |
| | | | P2 | 19DEC13 | REVISED PER CLIENT COMMENTS | | | | | | |
| | | | P1 | 27NOV13 | ISSUED FOR COMMENTS | | | | | | |



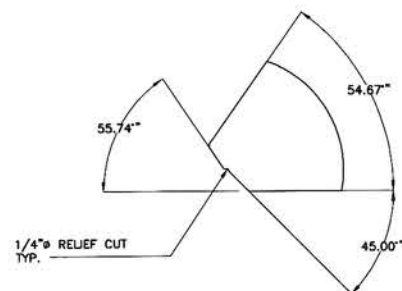
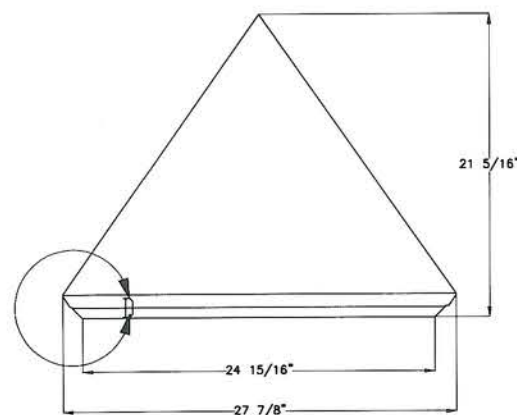
ROOF CAP ASSEMBLY



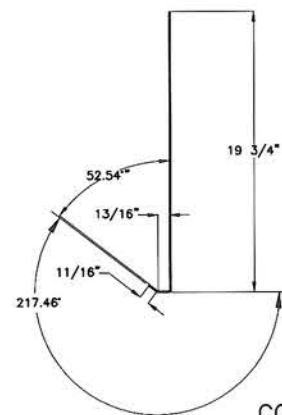
CAP PLATE
MATERIAL: 12 GAUGE ALUMINUM
1 REQUIRED
SCALE: 3/4\"/>



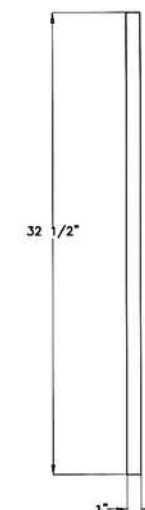
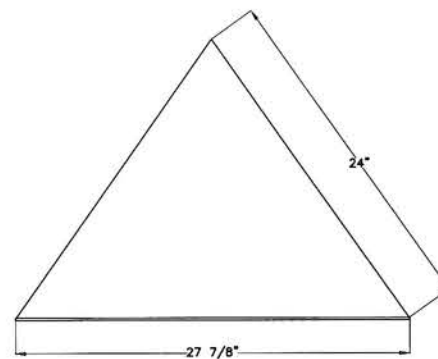
COVER PLATE - 2
MATERIAL: 10 GAUGE ALUMINUM
2 REQUIRED
SCALE: 1/2\"/>



DETAIL D
SCALE 1 : 3



COVER PLATE - 1
MATERIAL: 10 GAUGE ALUMINUM
2 REQUIRED
SCALE: 1/2\"/>

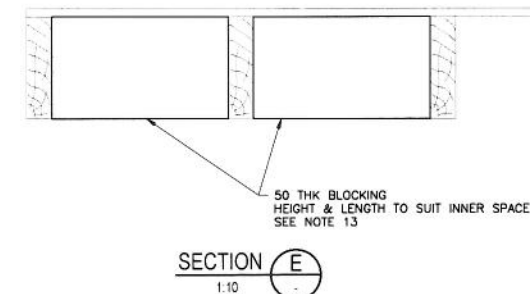
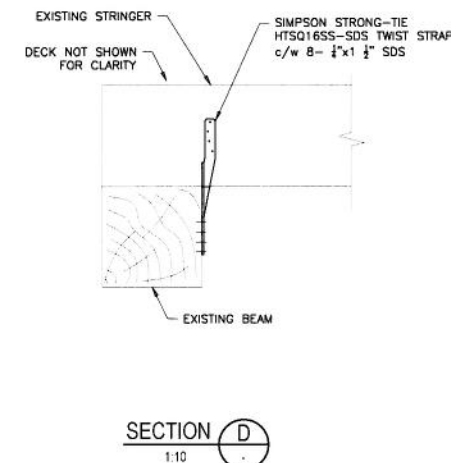
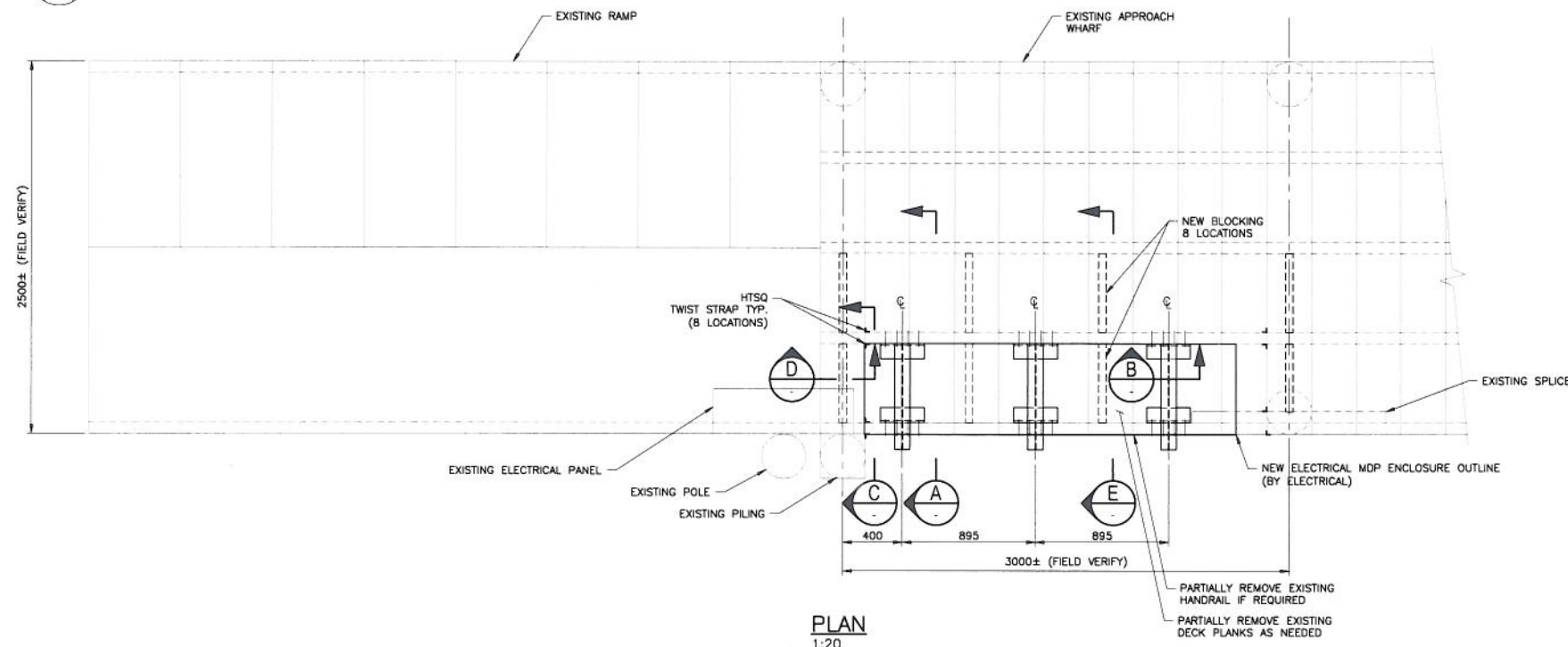


ROOF SUPPORTS
MATERIAL: TS 1 x 1 x 0.12 x 32 1/2\"/>

On behalf of Ausenco
Engineering Canada Inc
PROFESSIONAL
ENGINEER
D.P. BEAN
BRITISH COLUMBIA
SEP 15 2017

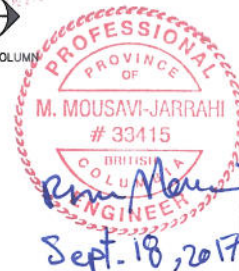
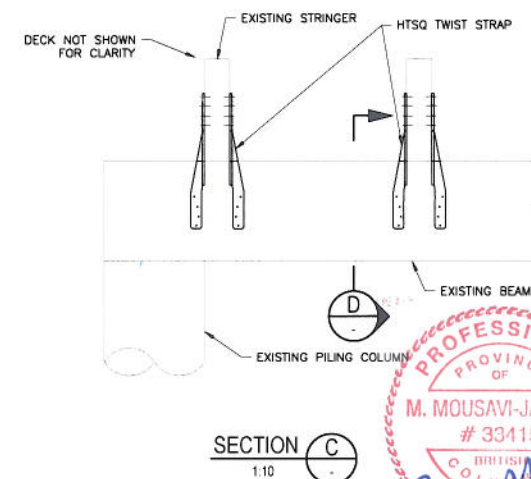
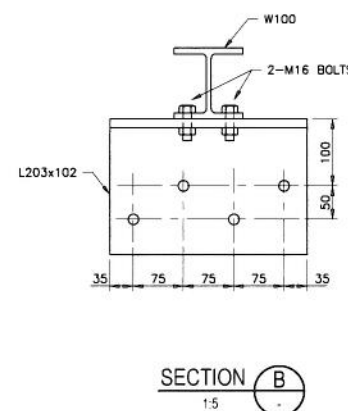
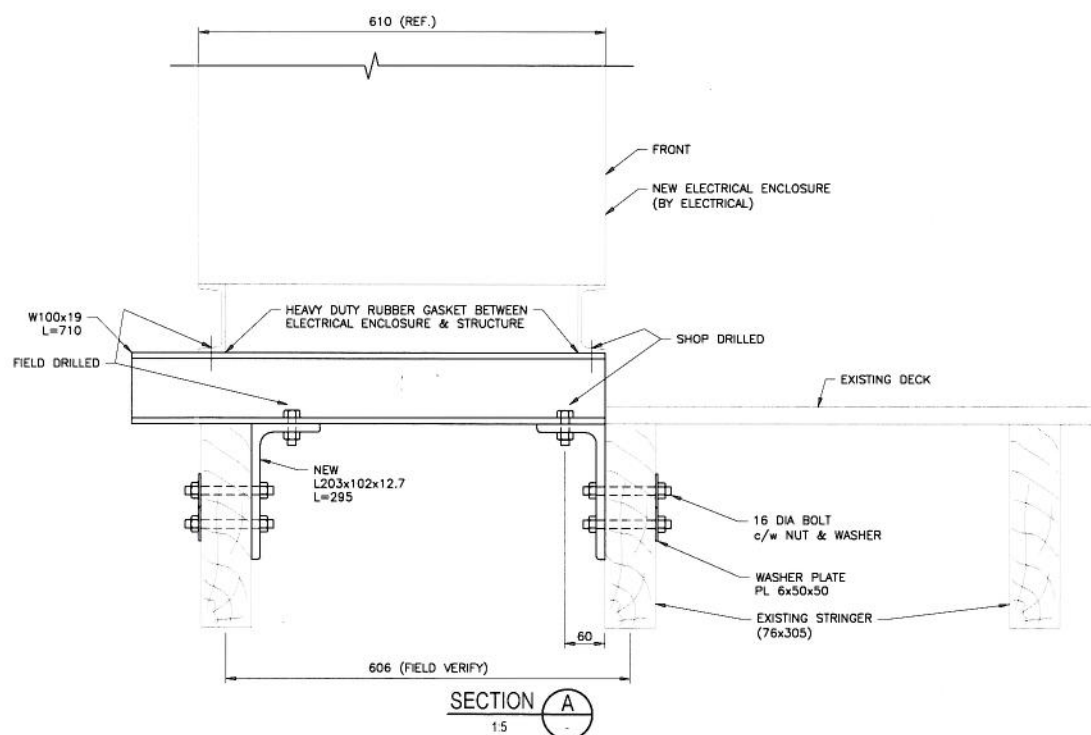
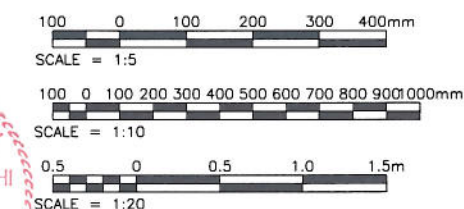
| Ausenco | | FISHERIES AND OCEANS CANADA SMALL CRAFT HARBOURS | |
|--|--|---|-------------|
| HARBOUR UPGRADE BELLA BELLA - MARTINS COVE, B.C. ALUMINUM KIOSK DETAILS | | SCALE | AS NOTED |
| | | DATE | 27-NOV-2013 |
| | | DRAWING NUMBER | 100247-E7 |
| | | REVISION | 0 |

| DWG. NO. | DRAWING REFERENCES | NOTES | NO. | DATE | REVISIONS | DESIGNED PJS | DRAWN LT | CHECKED | RECOMMENDED | APPROVED | APPROVED |
|----------|--------------------|-------|-----|---------|-----------------------------|-----------------|-------------|---------|-------------|----------|----------|
| | | | 0 | 14SEP17 | ISSUED FOR TENDER | | | | | | |
| | | | P2 | 19DEC13 | REVISED PER CLIENT COMMENTS | | | | | | |
| | | | P1 | 27NOV13 | ISSUED FOR COMMENTS | | | | | | |



NOTES:

1. ALL WORK SHALL BE IN ACCORDANCE WITH CONTRACT DOCUMENTS.
2. CONSTRUCTION SHALL CONFORM TO THE REQUIREMENTS OF OCCUPATIONAL HEALTH REGULATIONS OF WORKSAFE BC AND THE OWNER'S SAFETY POLICY.
3. ALL DIMENSIONS ARE IN MILLIMETERS UNLESS NOTED OTHERWISE.
4. CONTRACTOR TO FIELD VERIFY DIMENSIONS AND ELEVATIONS OF ALL EXISTING ITEMS PRIOR TO FABRICATION.
5. STRUCTURAL STEEL SHALL CONFORM TO THE GENERAL REQUIREMENTS OF CAN/CSA-G40.20-13/G40.21-13. ALL STEEL WORKS TO BE IN ACCORDANCE WITH BCBC 2012 AND CSA STANDARD S16-14.
6. STRUCTURAL STEEL:
A. WIDE FLANGE SECTIONS: GRADE 350
B. ANGLES, CHANNELS AND PLATES: GRADE 300
C. THREADED RODS AND ANCHOR RODS: ASTM A307.
7. ALL BOLTS SHALL BE GALVANIZED HIGH STRENGTH STRUCTURAL BOLTS CONFORMING TO ASTM A325.
8. ALL STRUCTURAL AND MISCELLANEOUS STEEL INCLUDING ALL BOLTS, NUTS AND WASHERS SHALL BE HOT-DIP GALVANIZED TO MINIMUM COATING THICKNESS OF 700 g/m² AFTER FABRICATION. GALVANIZING SHALL CONFORM TO CSA STANDARD G164.
9. APPLY TWO COATS OF GALVON ON ANY STEEL SURFACE WHERE BARE STEEL HAS BEEN EXPOSED INCLUDING FIELD DRILLED HOLES.
10. PROVIDE STRUCTURAL WOOD FRAMING/AND DECKING AND PERFORM WORK TO 2012 BC BUILDING CODE AND CAN/CSA-086-14 ENGINEERING DESIGN IN WOOD.
11. LUMBER SHALL CONFORM TO CAN/CSA-0141-05, THE NLGA STANDARD GRDING RULES FOR CANADIAN LUMBER, AND SHALL HAVE A MAXIMUM 15% MOISTURE CONTENT AT TIME OF INSTALLATION.
12. WOOD MATERIAL: PRESSURE-TREATED DOUGLAS FIR No.1.
13. FOR ALL NEW BLOCKING PROVIDE TIGHT FIT BETWEEN EXISTING STRINGERS AND CONNECT WITH 4-76mm LONG TOE NAILS ON BOTH SIDES.

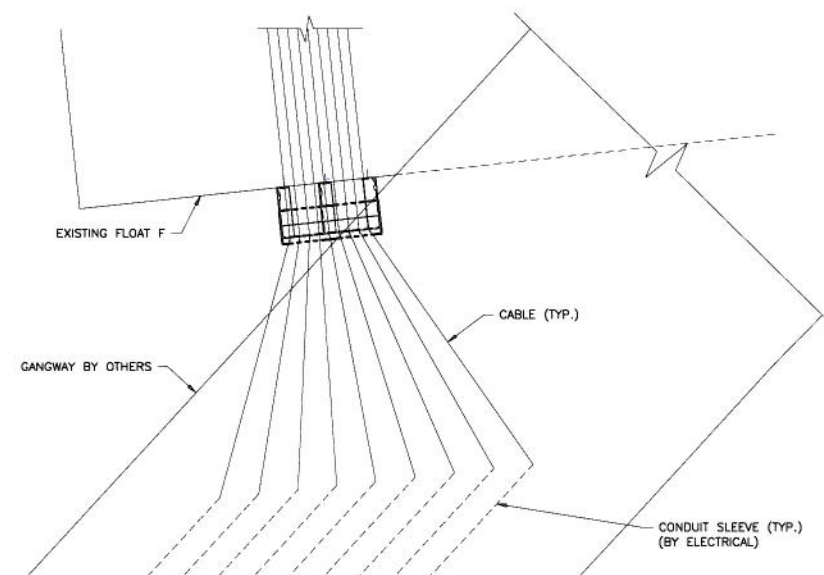


| | | | | | | |
|----------|----------------------------|-------|-----|---------|-------------------|-------------|
| DWG. NO. | DRAWING REFERENCES | NOTES | NO. | DATE | REVISIONS | DESIGNED |
| | | | | | | RM |
| -E3 | RECEPTACLE CABINET DETAILS | | 0 | 15SEP17 | ISSUED FOR TENDER | DRAWN |
| | | | | | | SB |
| | | | | | | CHECKED |
| | | | | | | HP |
| | | | | | | RECOMMENDED |
| | | | | | | DB |
| | | | | | | APPROVED |
| | | | | | | DB |

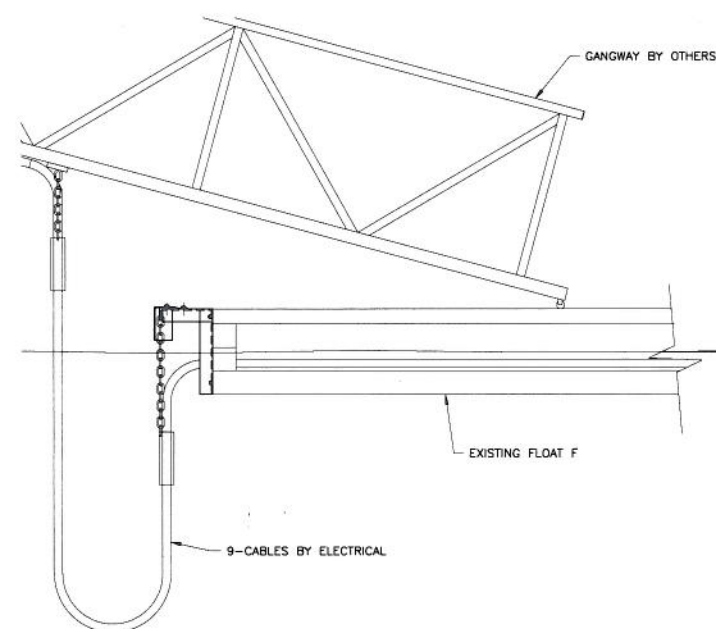
Ausenco
FISHERIES AND OCEANS CANADA
SMALL CRAFT HARBOURS

**HARBOUR UPGRADE
BELLA BELLA - MARTINS COVE, B.C.
ELECTRICAL ENCLOSURE SUPPORT
SECTIONS AND DETAILS**

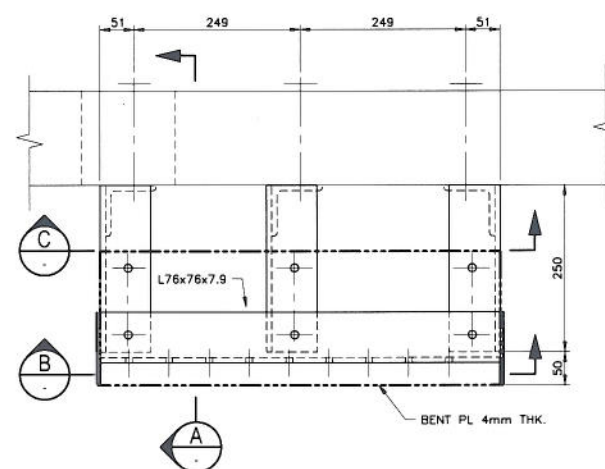
SCALE
AS NOTED
DATE
15-SEP-2017
DRAWING NUMBER
100247-S1
REVISION
0



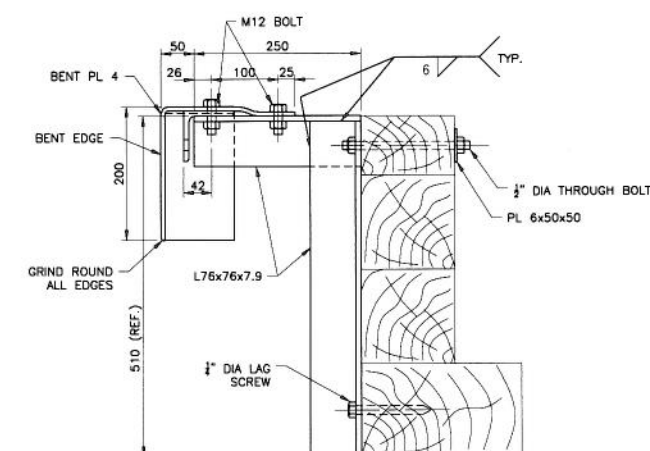
GENERAL ARRANGEMENT – PLAN
1:20



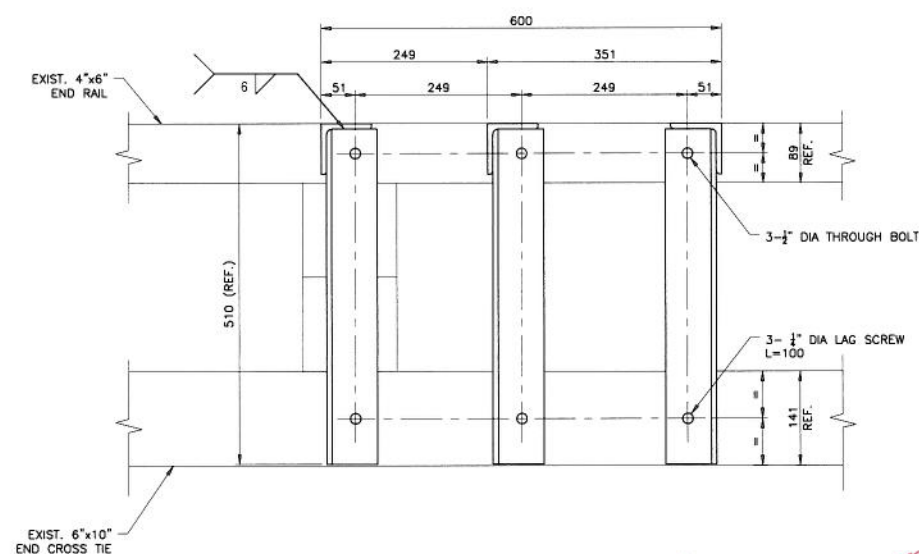
ELEVATION
1:20



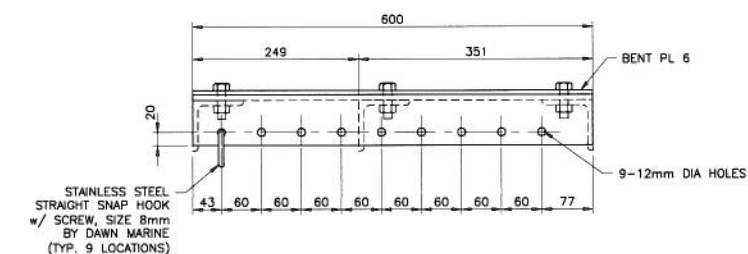
PLAN
1:5



SECTION A



SECTION C
1.5

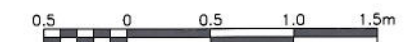


SECTION 1.5

1. FOR ALL GENERAL NOTES SEE DWG 100247-S1



SCALE = 1:5



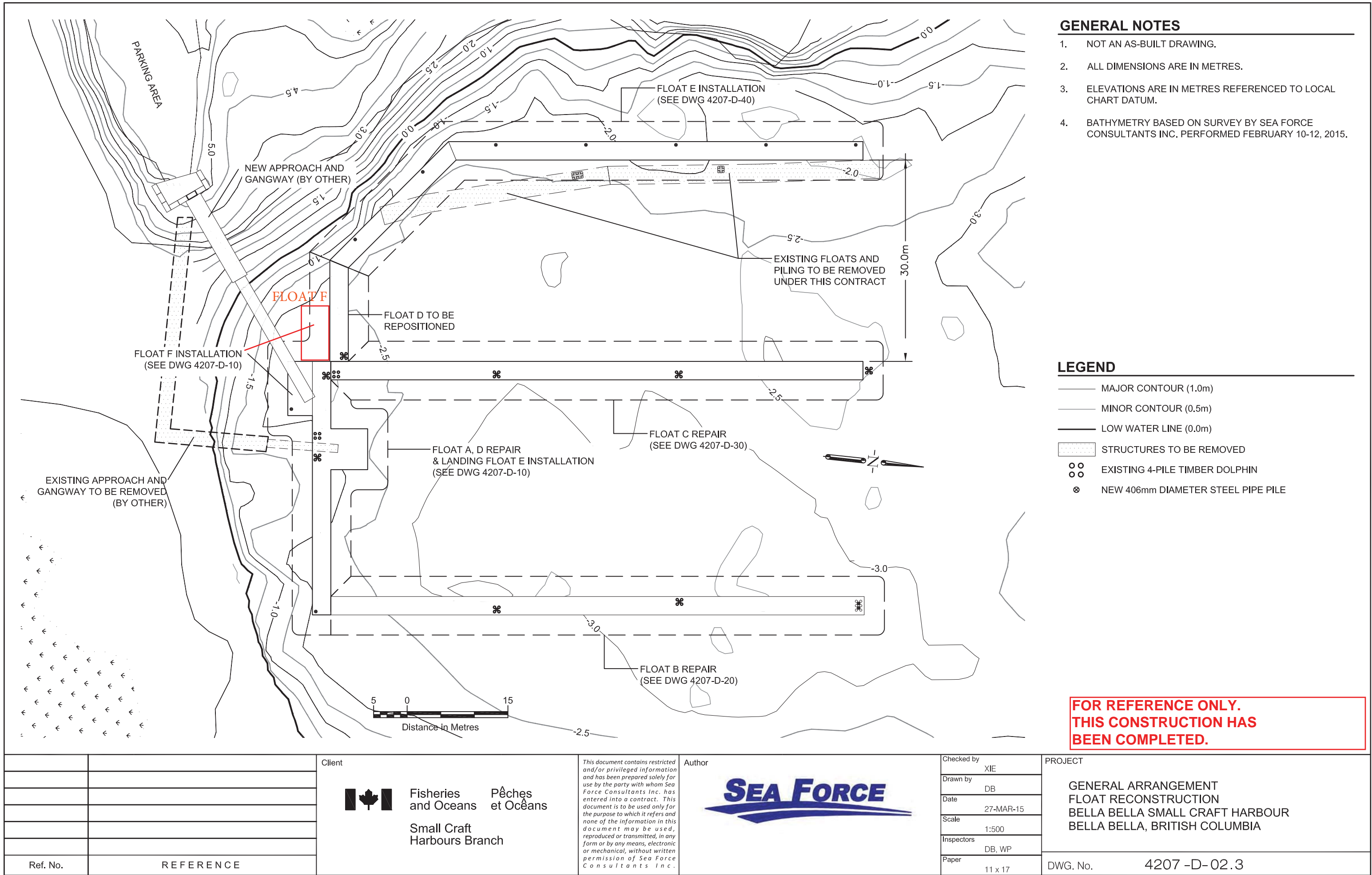
SCALE = 1:20

Sept. 18, 2017

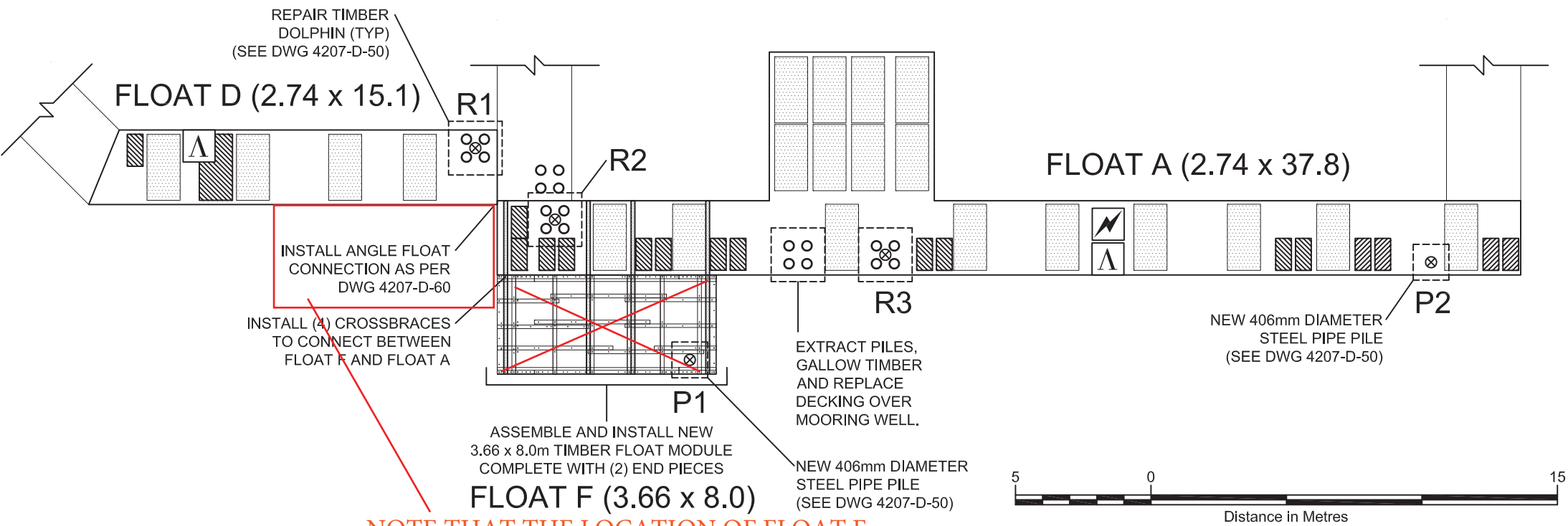
Ausenco

FISHERIES AND OCEANS CANADA
SMALL CRAFT HARBOURS

[illegible]



PLAN VIEW: FLOATS A, D & E

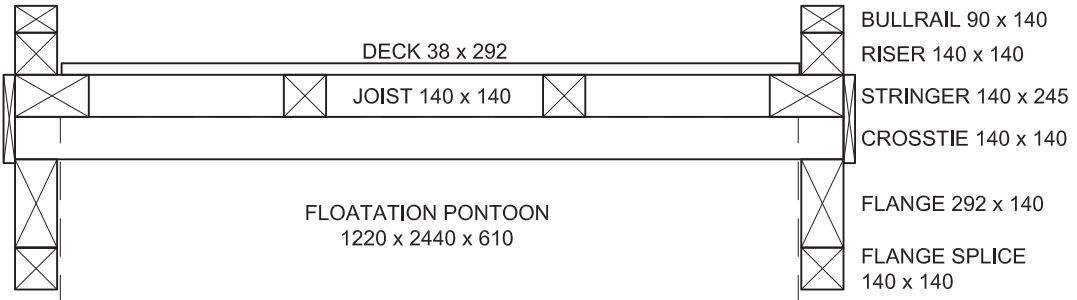


NOTE THAT THE LOCATION OF FLOAT F
HAS CHANGED TO THAT SHOWN ON
DWG. 4207-D-02.3

REPAIR SCHEDULE 1

| COMPONENT | MATERIAL | DIMENSIONS (mm) | QUANTITY | LOCATION/COMMENTS |
|--|----------|--------------------|-------------|-----------------------------|
| 4-PILE DOLPHIN | TIMBER | NA | 1 | EXTRACT AT LOCATION SHOWN |
| GALLOW BEAM | TIMBER | 305 x 305 x 5000 | 1 | REMOVE PLUS HARDWARE. |
| 4-PILE DOLPHIN REPAIR WITH CENTER STEEL PILE (R) | | | 3 | REPAIR IN LOCATIONS SHOWN. |
| STEEL MOORING PILE INSTALLATION (P) | | | 2 | INSTALL IN LOCATIONS SHOWN. |
| FLOAT F - NEW 3.66 x 8.0m TIMBER FLOAT MODULE | | | 1 | ASSEMBLE AND INSTALL. |
| CROSS-TIES | CREO | 140 x 140 x 6400 | 4 | INSTALL AS SHOWN. |
| DECKING | ACZA | 38 x 292 x 2440 | 5 PLANKS | REPLACE WHERE SHOWN. |
| FLOATATION A | FIBRGLAS | 610 x 1200 x 2440 | 1 PONTOON | INSTALL/REPLACE AS SHOWN. |
| FLOATATION B | PLASTIC | 610 x 580 x 1180 | 17 PONTOONS | INSTALL/REPLACE AS SHOWN. |
| FASCIA | ACZA | 292 x 38 x TO SUIT | 125 METRES | REPLACE ALL EXISTING |
| WALKWAY TREAD | STEEL | 1220 WIDE | 50 METRES | INSTALL ON TOP OF DECK |
| FLOAT CONNECTION | STEEL | AS SPECIFIED | 1 | INSTALL AS SHOWN. |

TYPICAL SECTION: FLOATS A & D



DRAWING NOTES

1.

NOT AN AS-BUILT DRAWING.
2.

REPAIR LOCATIONS SHOWN FOR ILLUSTRATION PURPOSES.
3.

ALL DIMENSIONS AND REPAIR LOCATIONS TO BE CONFIRMED BY THE CONTRACTOR.
4.

ALL FLOAT MODULES TO BE ASSEMBLED AS PER REFERENCE DRAWINGS:
- FM12-END-200:

3.66m (12ft) WIDE END PIECE ASSEMBLY
- FM12-END-201:

3.66m (12ft) WIDE END PIECE MEMBERS
- FM12-ST-000:

3.66m (12ft) WIDE MODULE ASSEMBLY
- FM12-ST-001:

3.66m (12ft) WIDE MODULE MEMBERS

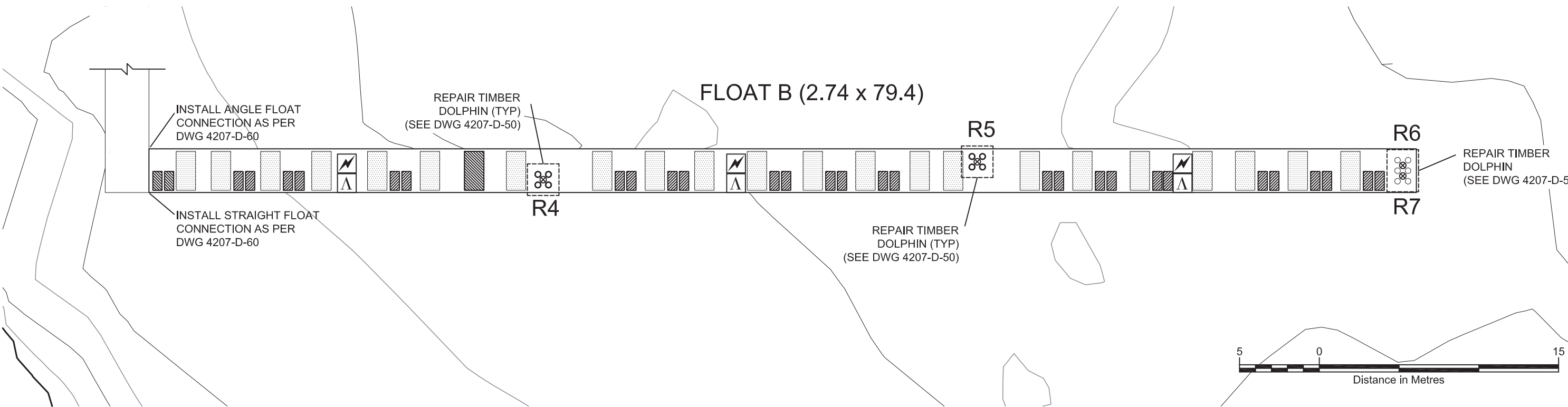
LEGEND

- EXISTING FLOATATION
- NEW FLOATATION PONTOON A (610 x1220 x 2440)
- NEW FLOATATION PONTOON B (610 x 580 x 1180)
- NEW 406mm DIAMETER STEEL PIPE PILE
- EXISTING 4-PILE TIMBER DOLPHIN
- LAMP STANDARD
- TRANSFORMER
- ELECTRICAL RECEPTACLE

FOR REFERENCE ONLY.
THIS CONSTRUCTION HAS
BEEN COMPLETED.

| | | | | | | | |
|----------|-----------|--|--|------------|-----------|---------|--|
| | | <div><div><div></div><div></div></div><div><div>Fisheries and Oceans</div><div>Pêches et Océans</div></div><div><div>Small Craft Harbours Branch</div></div></div> | <div><div>This document contains restricted and/or privileged information and has been prepared solely for use by the party with whom Sea Force Consultants Inc. has entered into a contract. This document is to be used only for the purpose to which it refers and none of the information in this document may be used, reproduced or transmitted, in any form or by any means, electronic or mechanical, without written permission of Sea Force Consultants Inc.</div><div>Author</div><div><div>SEA FORCE</div></div></div> | Checked by | XIE | PROJECT | |
| | | | | Drawn by | DB | | FLOATS A, D & F LAYOUT FLOAT RECONSTRUCTION BELLA BELLA SMALL CRAFT HARBOUR BELLA BELLA, BRITISH COLUMBIA |
| | | | | Date | 27-MAR-15 | | |
| | | | | Scale | 1:200 | | |
| | | | | Inspectors | DB, WP | | |
| Ref. No. | REFERENCE | | | | | Paper | 11 x 17 |

PLAN VIEW: FLOAT B



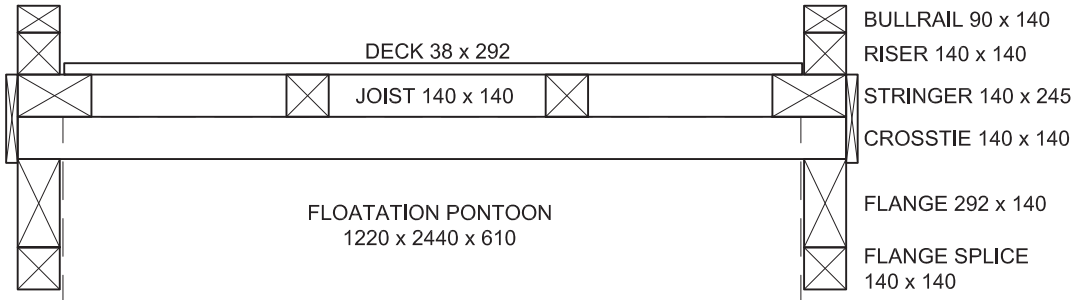
DRAWING NOTES

- 1. NOT AN AS-BUILT DRAWING.
- 2. REPAIR LOCATIONS SHOWN FOR ILLUSTRATION PURPOSES.
- 3. ALL DIMENSIONS AND REPAIR LOCATIONS TO BE CONFIRMED BY THE CONTRACTOR.

REPAIR SCHEDULE 2

| COMPONENT | MATERIAL | DIMENSIONS (mm) | QUANTITY | LOCATION/COMMENTS |
|--|----------|--------------------|-------------|----------------------------|
| 4-PILE DOLPHIN REPAIR WITH CENTER STEEL PILE (R) | | | 4 | REPAIR IN LOCATIONS SHOWN. |
| FLOATATION A | FIBRGLAS | 610 x 1200 x 2440 | 1 PONTOONS | INSTALL/REPLACE AS SHOWN. |
| FLOATATION B | PLASTIC | 610 x 580 x 1180 | 30 PONTOONS | INSTALL/REPLACE AS SHOWN. |
| FASCIA | ACZA | 292 x 38 x TO SUIT | 160 METRES | REPLACE ALL EXISTING. |
| WALKWAY TREAD | STEEL | 1220 WIDE | 78 METRES | INSTALL ON TOP OF DECK. |
| FLOAT CONNECTION | STEEL | AS SPECIFIED | 2 | INSTALL AS SHOWN. |

TYPICAL SECTION: FLOAT B



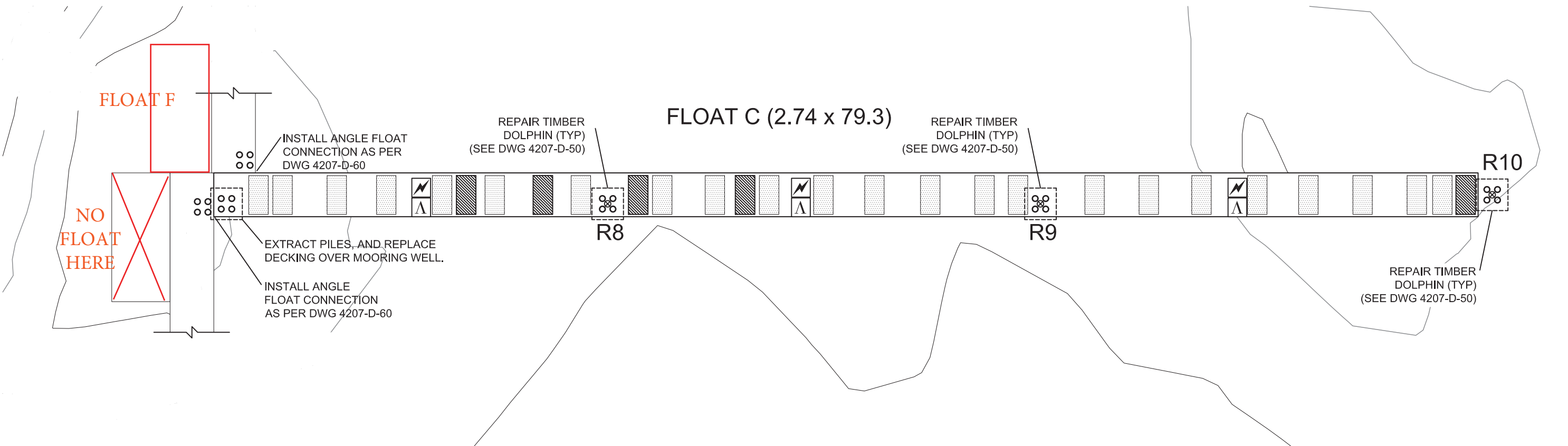
LEGEND

- EXISTING FLOATATION
- NEW FLOATATION PONTOON A (610 x 1220 x 2440)
- NEW FLOATATION PONTOON B (610 x 580 x 1180)
- NEW 406mm DIAMETER STEEL PIPE PILE
- EXISTING 4-PILE TIMBER DOLPHIN
- LAMP STANDARD
- TRANSFORMER
- ELECTRICAL RECEPTACLE

FOR REFERENCE ONLY.
THIS CONSTRUCTION HAS
BEEN COMPLETED.

| | | | | | |
|----------|-----------|---|--|----------------------|---|
| | | <div>Client</div> <div> Fisheries and Oceans / Pêches et Océans</div> <div>Small Craft Harbours Branch</div> | <div>This document contains restricted and/or privileged information and has been prepared solely for use by the party with whom Sea Force Consultants Inc. has entered into a contract. This document is to be used only for the purpose to which it refers and none of the information in this document may be used, reproduced or transmitted, in any form or by any means, electronic or mechanical, without written permission of Sea Force Consultants Inc.</div> <div>Author</div> <div></div> | Checked by XIE | PROJECT FLOAT B LAYOUT FLOAT RECONSTRUCTION BELLA BELLA SMALL CRAFT HARBOUR BELLA BELLA, BRITISH COLUMBIA |
| | | | | Drawn by DB | |
| | | | | Date 27-MAR-15 | |
| | | | | Scale 1:1000 | |
| | | | | Inspectors DB, WP | |
| Ref. No. | REFERENCE | | | Paper 11 x 17 | DWG. No. 4207 -D- 20.3 |

PLAN VIEW: FLOAT C



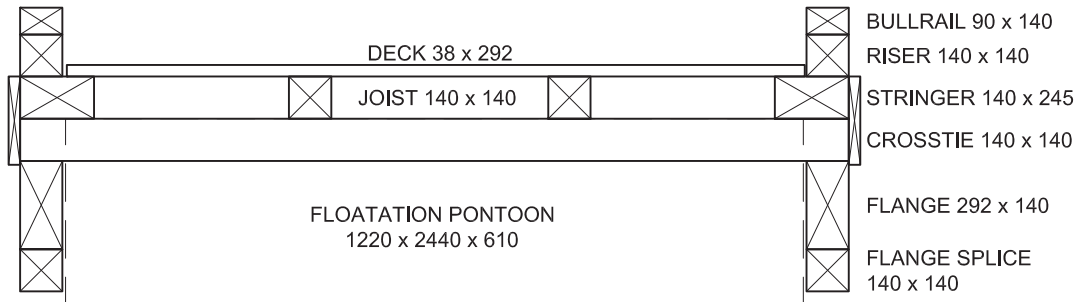
DRAWING NOTES

- 1. NOT AN AS-BUILT DRAWING.
- 2. REPAIR LOCATIONS SHOWN FOR ILLUSTRATION PURPOSES.
- 3. ALL DIMENSIONS AND REPAIR LOCATIONS TO BE CONFIRMED BY THE CONTRACTOR.

REPAIR SCHEDULE 3

| COMPONENT | MATERIAL | DIMENSIONS (mm) | QUANTITY | LOCATION/COMMENTS |
|--|----------|--------------------|------------|----------------------------|
| 4-PILE DOLPHIN | TIMBER | NA | 1 | EXTRACT AT LOCATION SHOWN |
| 4-PILE DOLPHIN REPAIR WITH CENTER STEEL PILE (R) | | | 3 | REPAIR IN LOCATIONS SHOWN. |
| DECKING | ACZA | 38 x 292 x 2440 | 5 PLANKS | REPLACE WHERE SHOWN. |
| FLOATATION A | FIBRGLAS | 610 x 1200 x 2440 | 5 PONTOONS | INSTALL/REPLACE AS SHOWN. |
| FASCIA | ACZA | 292 x 38 x TO SUIT | 160 METRES | REPLACE ALL EXISTING |
| WALKWAY TREAD | STEEL | 1220 WIDE | 78 METRES | INSTALL ON TOP OF DECK |
| FLOAT CONNECTION | STEEL | AS SPECIFIED | 2 | INSTALL AS SHOWN. |

TYPICAL SECTION: FLOAT C



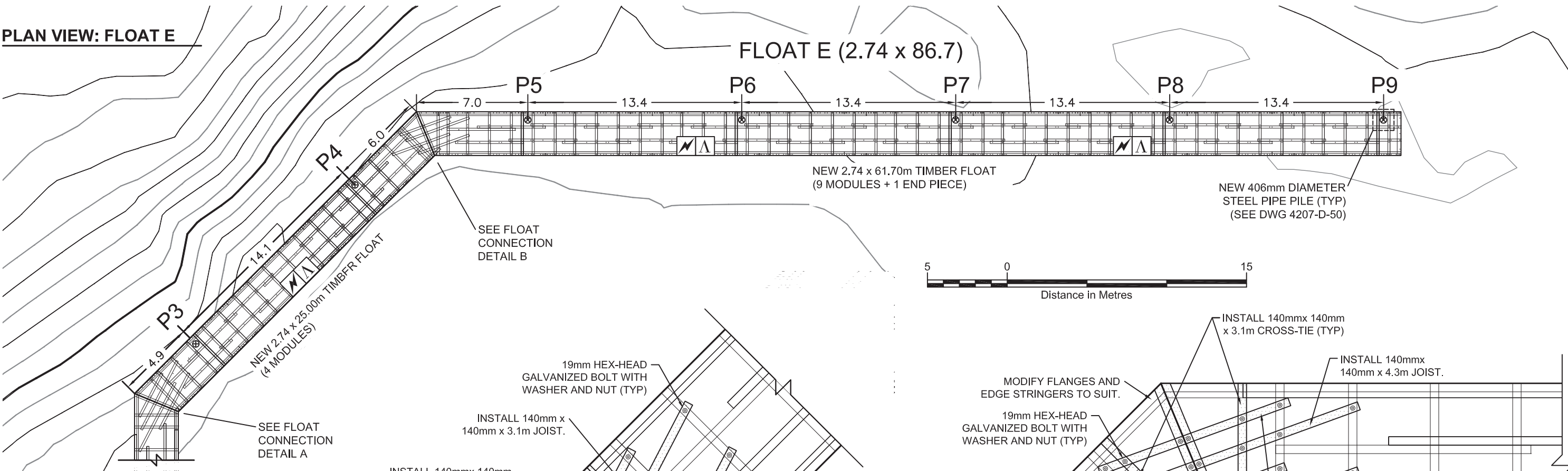
LEGEND

- EXISTING FLOATATION
- NEW FLOATATION PONTOON A (610 x 1220 x 2440)
- NEW FLOATATION PONTOON B (610 x 580 x 1180)
- NEW 406mm DIAMETER STEEL PIPE PILE
- EXISTING 4-PILE TIMBER DOLPHIN
- LAMP STANDARD
- TRANSFORMER
- ELECTRICAL RECEPTACLE

FOR REFERENCE ONLY.
THIS CONSTRUCTION HAS
BEEN COMPLETED.

| | | | | | | | | | | | | | | |
|----------|-----------|---|--|--|--|--|--|--|--|--|--|--|----------|-----------|
| | | <div>Client</div> <div><div><div><div></div><div></div></div><div>Fisheries and Oceans</div><div>Pêches et Océans</div></div><div><div>Small Craft Harbours Branch</div></div></div> <div><div><div>This document contains restricted and/or privileged information and has been prepared solely for use by the party with whom Sea Force Consultants Inc. has entered into a contract. This document is to be used only for the purpose to which it refers and none of the information in this document may be used, reproduced or transmitted, in any form or by any means, electronic or mechanical, without written permission of Sea Force Consultants Inc.</div><div>Author</div><div><div>SEA FORCE</div></div></div><div><div><div>Checked by</div><div>XIE</div><div>Drawn by</div><div>DB</div><div>Date</div><div>27-MAR-15</div><div>Scale</div><div>1:1000</div><div>Inspectors</div><div>DB, WP</div><div>Paper</div><div>11 x 17</div></div><div><div>PROJECT</div><div>FLOAT C LAYOUT FLOAT RECONSTRUCTION BELLA BELLA SMALL CRAFT HARBOUR BELLA BELLA, BRITISH COLUMBIA</div><div><div>DWG. No.</div><div>4207 -D- 30.3</div></div></div></div><tr><td></td><td></td></tr><tr><td></td><td></td></tr><tr><td></td><td></td></tr><tr><td></td><td></td></tr><tr><td></td><td></td></tr><tr><td>Ref. No.</td><td>REFERENCE</td></tr></div> | | | | | | | | | | | Ref. No. | REFERENCE |
| | | | | | | | | | | | | | | |
| | | | | | | | | | | | | | | |
| | | | | | | | | | | | | | | |
| | | | | | | | | | | | | | | |
| | | | | | | | | | | | | | | |
| Ref. No. | REFERENCE | | | | | | | | | | | | | |

PLAN VIEW: FLOAT E



DRAWING NOTES

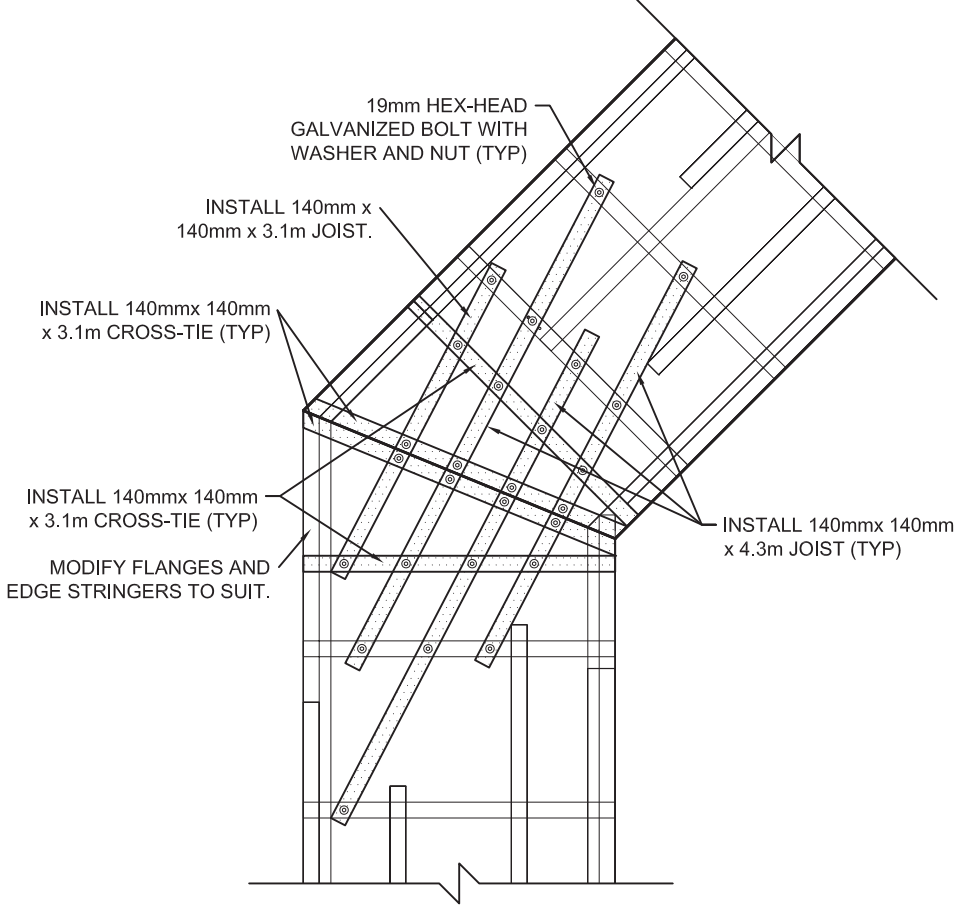
- NOT AN AS-BUILT DRAWING.
- DECKING AND OTHER MEMBERS NOT SHOWN FOR CLARITY.
- ALL FLOAT MODULES TO BE ASSEMBLED AS PER REFERENCE DRAWINGS:

FM9-END-200: 2.74m (9ft) WIDE END PIECE ASSEMBLY
FM9-END-201: 2.74m (9ft) WIDE END PIECE MEMBERS
FM9-ST-000: 2.74m (9ft) WIDE MODULE ASSEMBLY
FM9-ST-001: 2.74m (9ft) WIDE MODULE MEMBERS

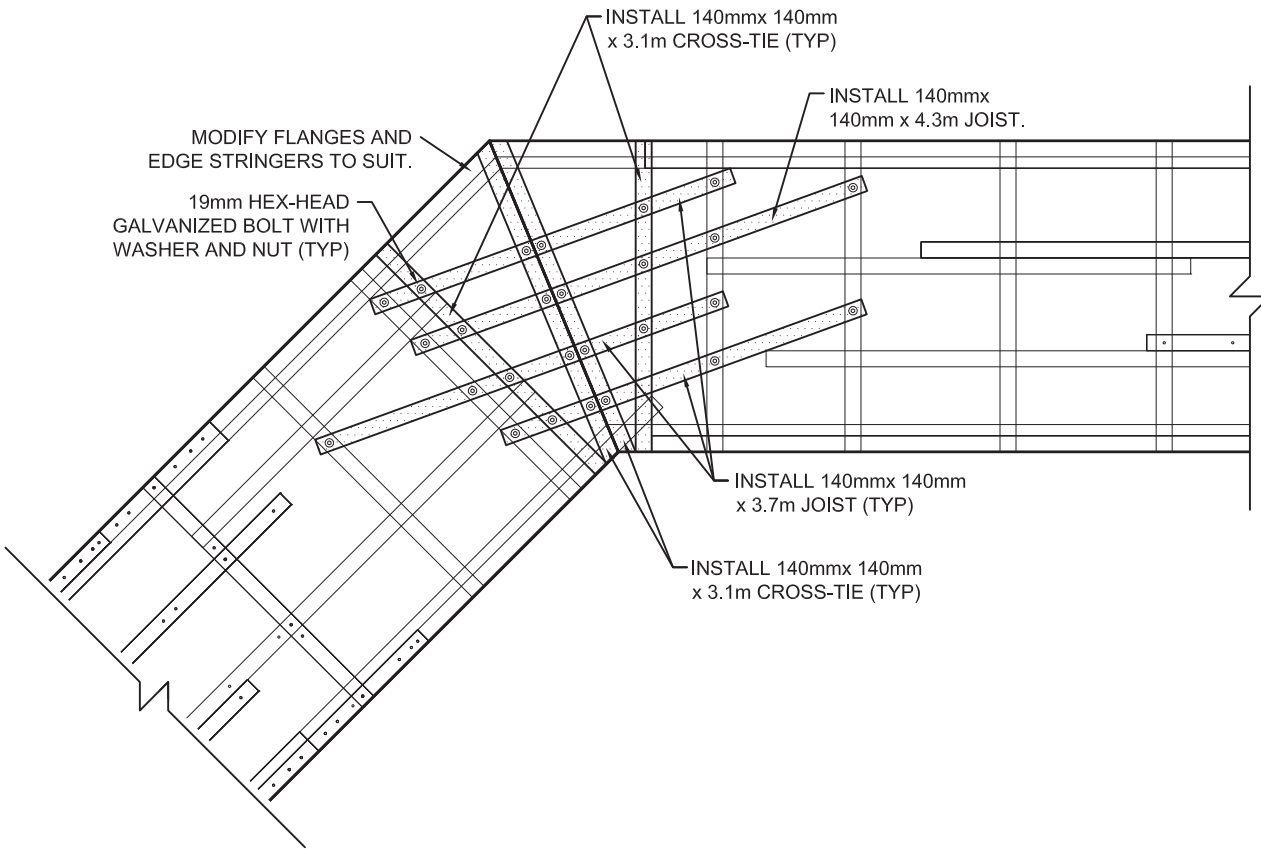
WITH 84 m OF WALKWAY TREAD AS PER DWG 4900-D-01.3 AND 174m OF NEW 38mm x 292m ACZA FASCIA TIMBER.
- CROSS-TIES AND CONNECTION JOISTS AS SHOWN TO BE INCLUDED WITH OWNER SUPPLIED FLOAT MODULE MATERIALS AND MODIFIED IN ORDER TO MAKE CONNECTIONS SHOWN.

**FOR REFERENCE ONLY.
THIS CONSTRUCTION HAS
BEEN COMPLETED.**

FLOAT CONNECTION DETAIL A

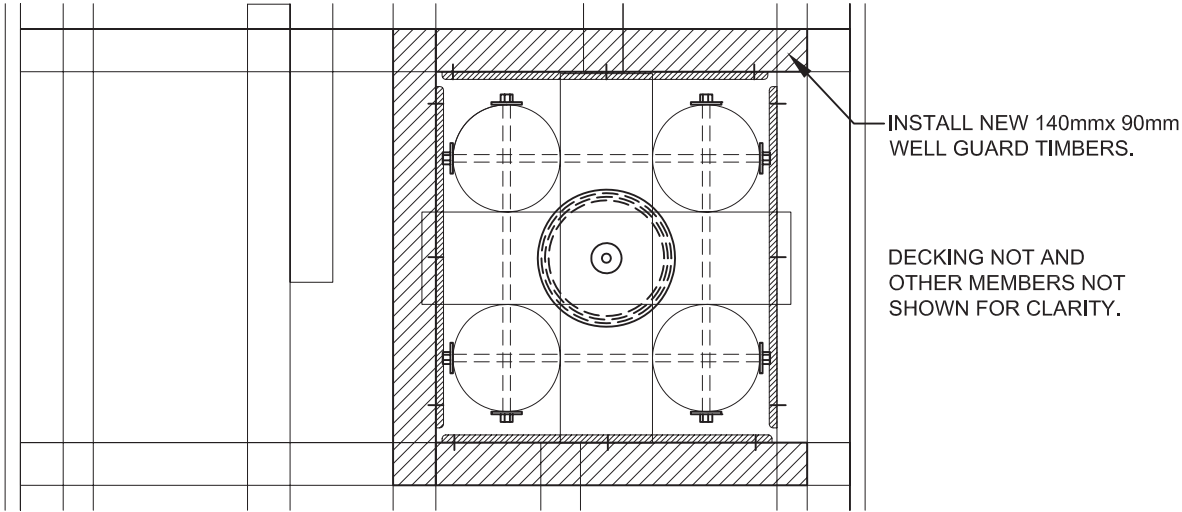


FLOAT CONNECTION DETAIL B

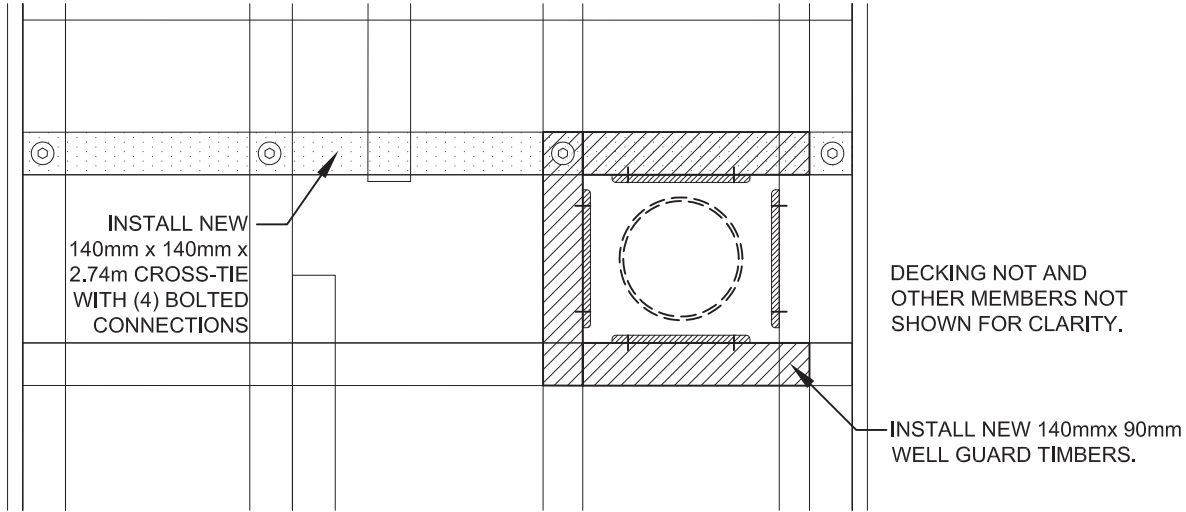


| | | | | | | | |
|----------|-----------|---|--|--|------------|-----------|---|
| | | <div>Client</div> <div><div></div><div>Fisheries and Oceans Pêches et Océans</div><div>Small Craft Harbours Branch</div></div> | <div><i>This document contains restricted and/or privileged information and has been prepared solely for use by the party with whom Sea Force Consultants Inc. has entered into a contract. This document is to be used only for the purpose to which it refers and none of the information in this document may be used, reproduced or transmitted, in any form or by any means, electronic or mechanical, without written permission of Sea Force Consultants Inc.</i></div> | <div>Author</div> <div></div> | Checked by | XIE | <div>PROJECT</div> <div>FLOAT E LAYOUT FLOAT RECONSTRUCTION BELLA BELLA SMALL CRAFT HARBOUR BELLA BELLA, BRITISH COLUMBIA</div> |
| | | | | | Drawn by | DB | |
| | | | | | Date | 27-MAR-15 | |
| | | | | | Scale | 1:1000 | |
| | | | | | Inspectors | DB, WP | |
| Ref. No. | REFERENCE | | | | | | |

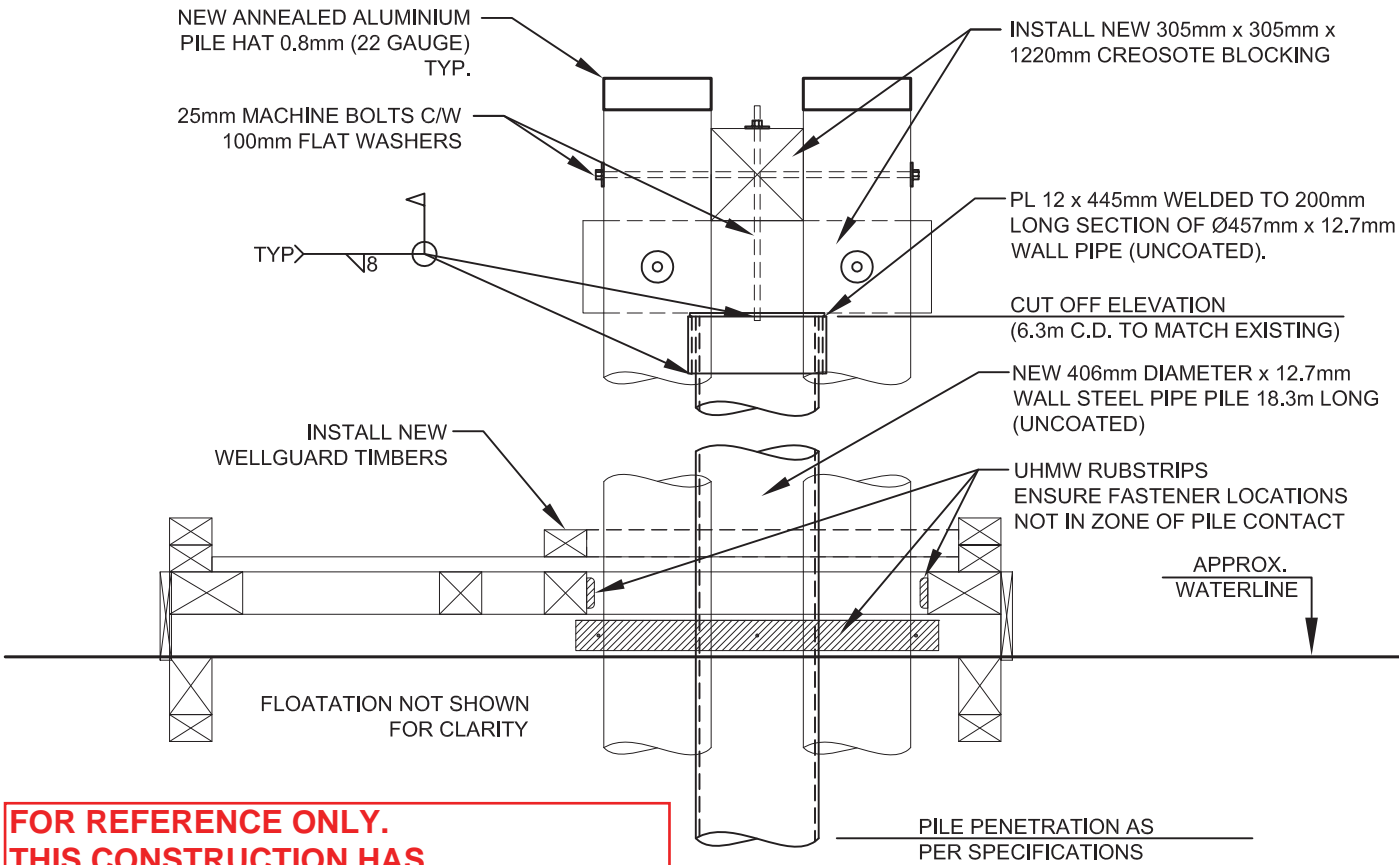
TIMBER PILE DOLPHIN REPAIR:
PLAN VIEW (TYP)



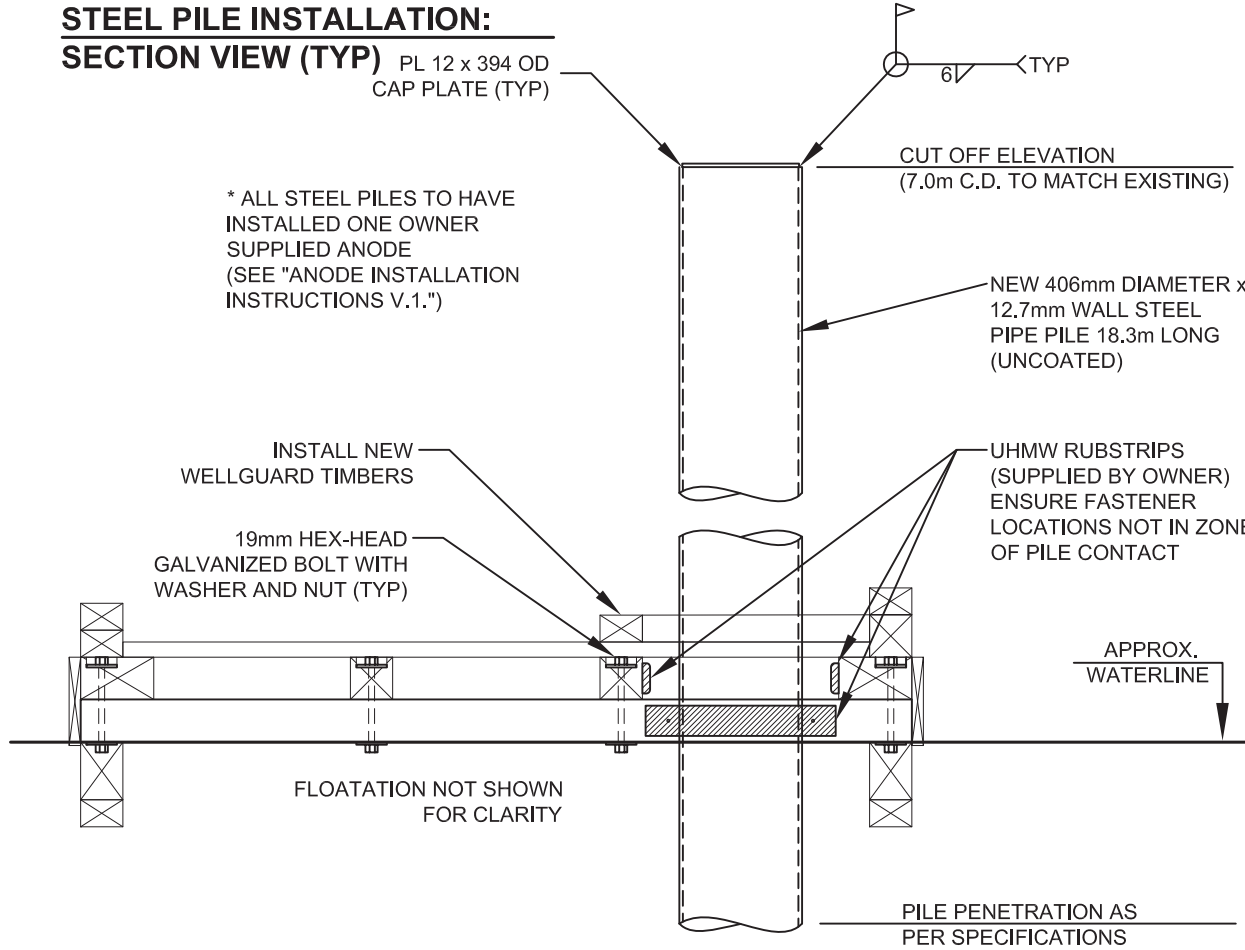
STEEL PILE INSTALLATION:
PLAN VIEW (TYP)




TIMBER PILE DOLPHIN REPAIR:
SECTION VIEW (TYP)



STEEL PILE INSTALLATION:
SECTION VIEW (TYP)

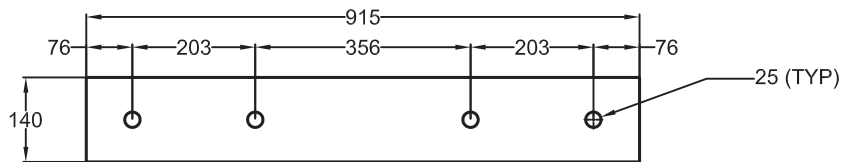


**FOR REFERENCE ONLY.
THIS CONSTRUCTION HAS
BEEN COMPLETED.**

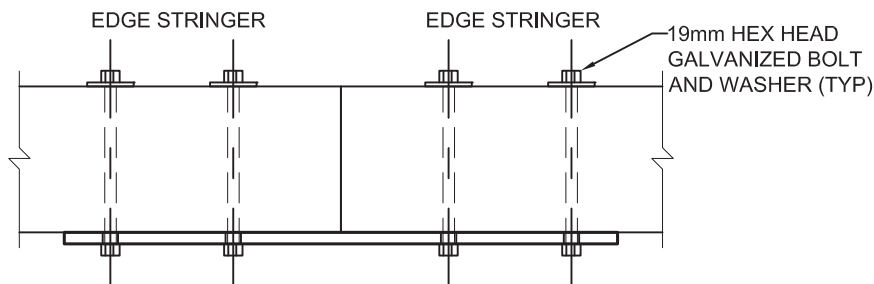
| | | | | | | | | | | | | | | | | | | | | | | |
|----------|-----------|--|--|--|--------------------------------------|--|--|--|-----------------------------------|--|--|--------------------------------------|--|--|----------------------------------|--|--|---|----------|-----------|-------------------------------------|--|
| | | <div>Client</div> <div><div><div><div></div><div></div></div><div>Fisheries and Oceans</div><div>Pêches et Océans</div></div><div>Small Craft Harbours Branch</div></div> <div><div>This document contains restricted and/or privileged information and has been prepared solely for use by the party with whom Sea Force Consultants Inc. has entered into a contract. This document is to be used only for the purpose to which it refers and none of the information in this document may be used, reproduced or transmitted, in any form or by any means, electronic or mechanical, without written permission of Sea Force Consultants Inc.</div><div>Author</div><div></div></div> <tr><td></td><td></td><td><div>Checked by</div><div>XIE</div></td><td rowspan="5"><div>PROJECT</div><div>PILE DOLPHIN DETAILS</div><div>FLOAT RECONSTRUCTION</div><div>BELLA BELLA SMALL CRAFT HARBOUR</div><div>BELLA BELLA, BRITISH COLUMBIA</div></td></tr> <tr><td></td><td></td><td><div>Drawn by</div><div>DB</div></td></tr> <tr><td></td><td></td><td><div>Date</div><div>27-MAR-15</div></td></tr> <tr><td></td><td></td><td><div>Scale</div><div>1:25</div></td></tr> <tr><td></td><td></td><td><div>Inspectors</div><div>DB, WP</div></td></tr> <tr><td>Ref. No.</td><td>REFERENCE</td><td><div>Paper</div><div>11 x 17</div></td><td><div>DWG. No.</div><div>4207 -D- 50.3</div></td></tr> | | | <div>Checked by</div> <div>XIE</div> | <div>PROJECT</div> <div>PILE DOLPHIN DETAILS</div> <div>FLOAT RECONSTRUCTION</div> <div>BELLA BELLA SMALL CRAFT HARBOUR</div> <div>BELLA BELLA, BRITISH COLUMBIA</div> | | | <div>Drawn by</div> <div>DB</div> | | | <div>Date</div> <div>27-MAR-15</div> | | | <div>Scale</div> <div>1:25</div> | | | <div>Inspectors</div> <div>DB, WP</div> | Ref. No. | REFERENCE | <div>Paper</div> <div>11 x 17</div> | <div>DWG. No.</div> <div>4207 -D- 50.3</div> |
| | | | <div>Checked by</div> <div>XIE</div> | <div>PROJECT</div> <div>PILE DOLPHIN DETAILS</div> <div>FLOAT RECONSTRUCTION</div> <div>BELLA BELLA SMALL CRAFT HARBOUR</div> <div>BELLA BELLA, BRITISH COLUMBIA</div> | | | | | | | | | | | | | | | | | | |
| | | | <div>Drawn by</div> <div>DB</div> | | | | | | | | | | | | | | | | | | | |
| | | | <div>Date</div> <div>27-MAR-15</div> | | | | | | | | | | | | | | | | | | | |
| | | | <div>Scale</div> <div>1:25</div> | | | | | | | | | | | | | | | | | | | |
| | | | <div>Inspectors</div> <div>DB, WP</div> | | | | | | | | | | | | | | | | | | | |
| Ref. No. | REFERENCE | <div>Paper</div> <div>11 x 17</div> | <div>DWG. No.</div> <div>4207 -D- 50.3</div> | | | | | | | | | | | | | | | | | | | |



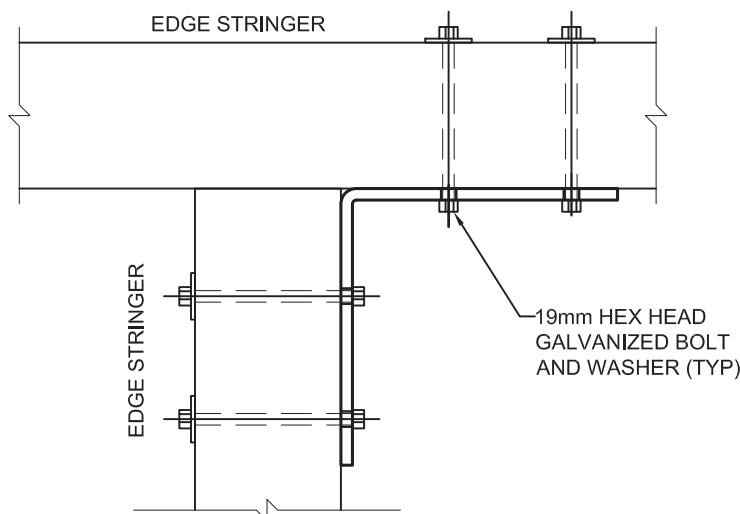
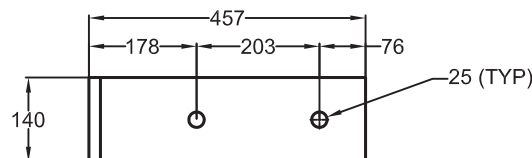
FLOAT CONNECTOR: STRAIGHT



MATERIAL: 19mm STEEL PLATE
COATING: HOT DIPPED GALVANIZED



FLOAT CONNECTOR: ANGLED



* DECKING AND OTHER FLOAT COMPONENTS NOT SHOWN FOR CLARITY.

**FOR REFERENCE ONLY.
THIS CONSTRUCTION HAS
BEEN COMPLETED.**

| | | | | |
|----------|-----------|------------|--|--|
| | | Checked by | PROJECT | |
| | | XIE | FLOAT CONNECTION DETAILS (TYPICAL) 2.74m AND 3.66m WIDE TIMBER FLOATS SMALL CRAFT HARBOURS PACIFIC REGION | |
| | | Drawn by | | |
| | | DB | | |
| | | Date | | |
| | | 27-MAR-15 | | |
| | | Scale | DWG. No. 4207 -D- 60.3 | |
| | | AS SHOWN | | |
| | | Inspectors | | |
| | | N/A | | |
| Ref. No. | REFERENCE | Paper | | |
| | | 8.5 x 11 | | |

Client



Fisheries and Oceans
Pêches et Océans

Small Craft
Harbours Branch

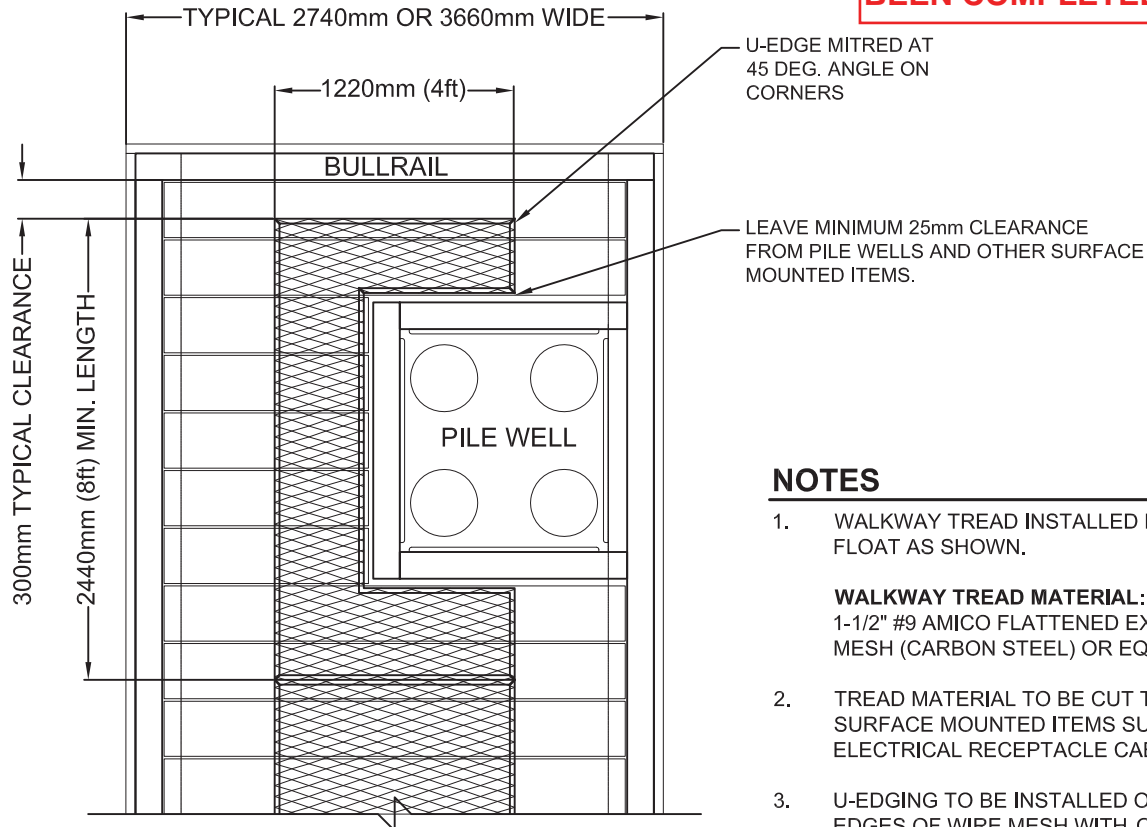
This document contains restricted and/or privileged information and has been prepared solely for use by the party with whom Sea Force Consultants Inc. has entered into a contract. This document is to be used only for the purpose to which it refers and none of the information in this document may be used, reproduced or transmitted, in any form or by any means, electronic or mechanical, without written permission of Sea Force Consultants Inc.

Author



PLAN VIEW WALKWAY TREAD LAYOUT (TYPICAL)

**FOR REFERENCE ONLY.
THIS CONSTRUCTION HAS
BEEN COMPLETED.**



NOTES

1. WALKWAY TREAD INSTALLED DOWN CENTRE OF FLOAT AS SHOWN.
2. TREAD MATERIAL TO BE CUT TO CONFORM TO SURFACE MOUNTED ITEMS SUCH AS PILE WELLS, ELECTRICAL RECEPTACLE CABINETS, ETC.
3. U-EDGING TO BE INSTALLED OVER ALL EXPOSED EDGES OF WIRE MESH WITH CORNERS MITRED AT 45 DEGREES.

WALKWAY TREAD MATERIAL:

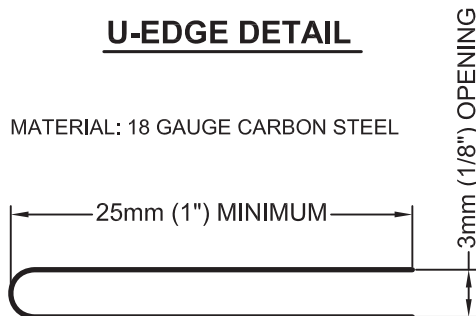
1-1/2" #9 AMICO FLATTENED EXPANDED METAL MESH (CARBON STEEL) OR EQUIVALENT.

U-EDGING MATERIAL: 18 GAUGE #401 METALMART OR EQUIVALENT WITH DIMENSIONS SHOWN.

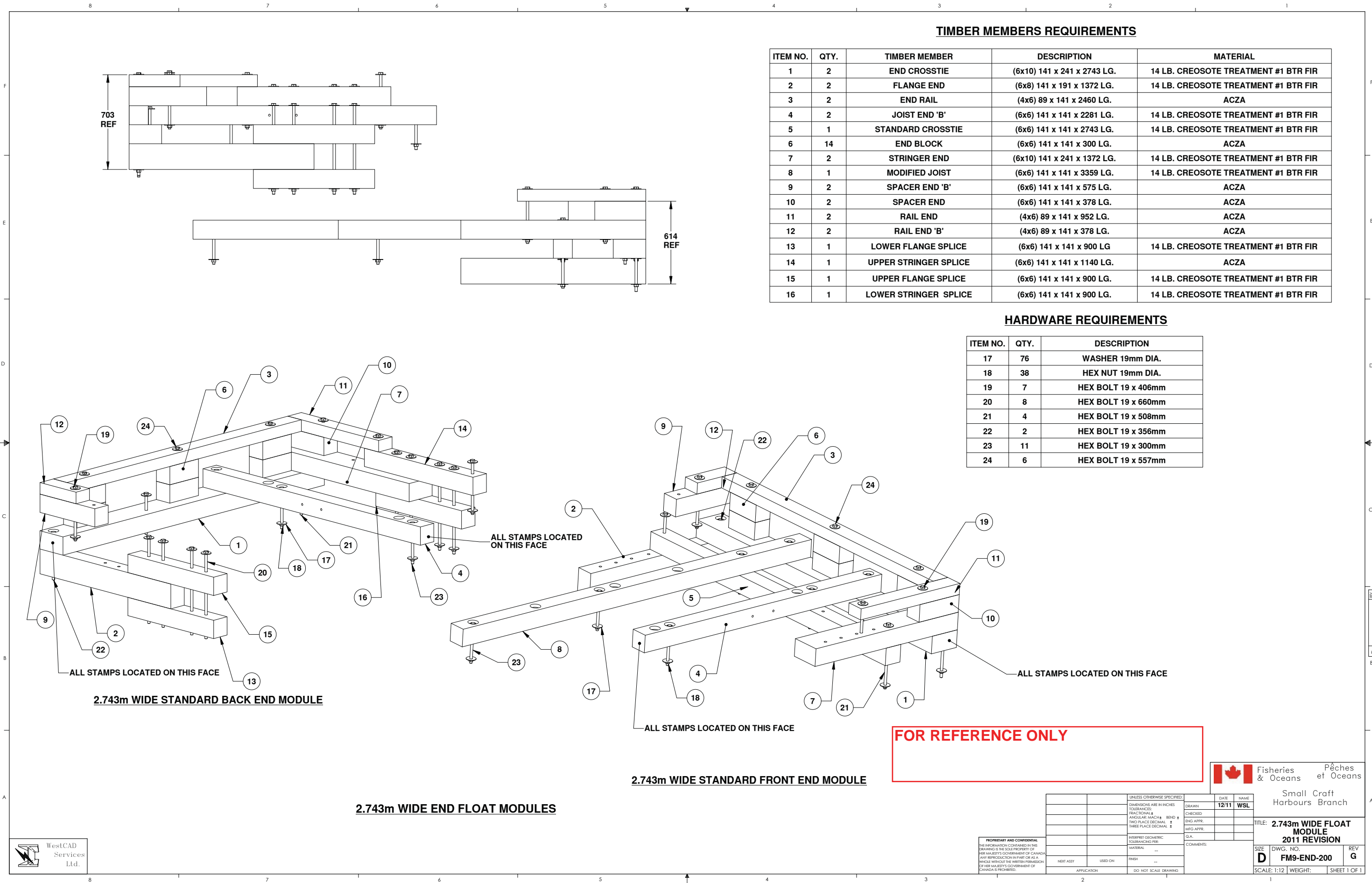
4. U-EDGING TO BE PRE-DRILLED AND FASTENED WITH #14 STAINLESS PAN HEAD WOOD SCREWS, 38mm (1-1/2" LONG).
5. FASTENERS TO HAVE A MAXIMUM SPACING OF 500mm WITH TWO (2) CONNECTION POINTS AT EACH CORNER

U-EDGE DETAIL

MATERIAL: 18 GAUGE CARBON STEEL



| | | | |
|----------|-----------|-------------------|--|
| | | Checked by XIE | PROJECT WALKWAY TREAD TYPICAL DETAIL 2.74m (9ft) AND 3.66m (12ft) WIDE TIMBER FLOATS SMALL CRAFT HARBOURS PACIFIC REGION, BRITISH COLUMBIA |
| | | Drawn by DB | |
| | | Date 25-MAR-15 | |
| | | Scale 1:40 | |
| | | Inspectors N/A | |
| | | Paper 8.5 x 11 | |
| Ref. No. | REFERENCE | | DWG. No. 4900 -D- 01 .3 |



TIMBER MEMBERS REQUIREMENTS

| ITEM NO. | QTY. | TIMBER MEMBER | DESCRIPTION | MATERIAL |
|----------|------|-----------------------|-----------------------------|--------------------------------------|
| 1 | 2 | END CROSSTIE | (6x10) 141 x 241 x 2743 LG. | 14 LB. CREOSOTE TREATMENT #1 BTR FIR |
| 2 | 2 | FLANGE END | (6x8) 141 x 191 x 1372 LG. | 14 LB. CREOSOTE TREATMENT #1 BTR FIR |
| 3 | 2 | END RAIL | (4x6) 89 x 141 x 2460 LG. | ACZA |
| 4 | 2 | JOIST END 'B' | (6x6) 141 x 141 x 2281 LG. | 14 LB. CREOSOTE TREATMENT #1 BTR FIR |
| 5 | 1 | STANDARD CROSSTIE | (6x6) 141 x 141 x 2743 LG. | 14 LB. CREOSOTE TREATMENT #1 BTR FIR |
| 6 | 14 | END BLOCK | (6x6) 141 x 141 x 300 LG. | ACZA |
| 7 | 2 | STRINGER END | (6x10) 141 x 241 x 1372 LG. | 14 LB. CREOSOTE TREATMENT #1 BTR FIR |
| 8 | 1 | MODIFIED JOIST | (6x6) 141 x 141 x 3359 LG. | 14 LB. CREOSOTE TREATMENT #1 BTR FIR |
| 9 | 2 | SPACER END 'B' | (6x6) 141 x 141 x 575 LG. | ACZA |
| 10 | 2 | SPACER END | (6x6) 141 x 141 x 378 LG. | ACZA |
| 11 | 2 | RAIL END | (4x6) 89 x 141 x 952 LG. | ACZA |
| 12 | 2 | RAIL END 'B' | (4x6) 89 x 141 x 378 LG. | ACZA |
| 13 | 1 | LOWER FLANGE SPLICE | (6x6) 141 x 141 x 900 LG | 14 LB. CREOSOTE TREATMENT #1 BTR FIR |
| 14 | 1 | UPPER STRINGER SPLICE | (6x6) 141 x 141 x 1140 LG. | ACZA |
| 15 | 1 | UPPER FLANGE SPLICE | (6x6) 141 x 141 x 900 LG. | 14 LB. CREOSOTE TREATMENT #1 BTR FIR |
| 16 | 1 | LOWER STRINGER SPLICE | (6x6) 141 x 141 x 900 LG. | 14 LB. CREOSOTE TREATMENT #1 BTR FIR |

HARDWARE REQUIREMENTS


| ITEM NO. | QTY. | DESCRIPTION |
|----------|------|---------------------|
| 17 | 76 | WASHER 19mm DIA. |
| 18 | 38 | HEX NUT 19mm DIA. |
| 19 | 7 | HEX BOLT 19 x 406mm |
| 20 | 8 | HEX BOLT 19 x 660mm |
| 21 | 4 | HEX BOLT 19 x 508mm |
| 22 | 2 | HEX BOLT 19 x 356mm |
| 23 | 11 | HEX BOLT 19 x 300mm |
| 24 | 6 | HEX BOLT 19 x 557mm |

FOR REFERENCE ONLY



PROPRIETARY AND CONFIDENTIAL
THE INFORMATION CONTAINED IN THIS
DRAWING IS THE SOLE PROPERTY OF
HER MAJESTY'S GOVERNMENT OF CANADA.
ANY REPRODUCTION IN PART OR AS A
WHOLE WITHOUT THE WRITTEN PERMISSION
OF HER MAJESTY'S GOVERNMENT OF
CANADA IS PROHIBITED.

| | | | | |
|-----------|---------|--|--|--------------------------|
| | | UNLESS OTHERWISE SPECIFIED: DIMENSIONS ARE IN INCHES TOLERANCES: FRACTIONAL ± ANGULAR: MATCH ± TWO PLACE DECIMAL ± THREE PLACE DECIMAL ± | DRAWN: 12/11 WSL CHECKED: ENG APPR: MFG APPR: | DATE: 12/11 NAME: WSL |
| | | INTERPRET GEOMETRIC TOLERANCING PER: MATERIAL: --- | COMMENTS: | |
| | | FINISH: --- | | |
| NEXT ASSY | USED ON | APPLICATION | DO NOT SCALE DRAWING | |



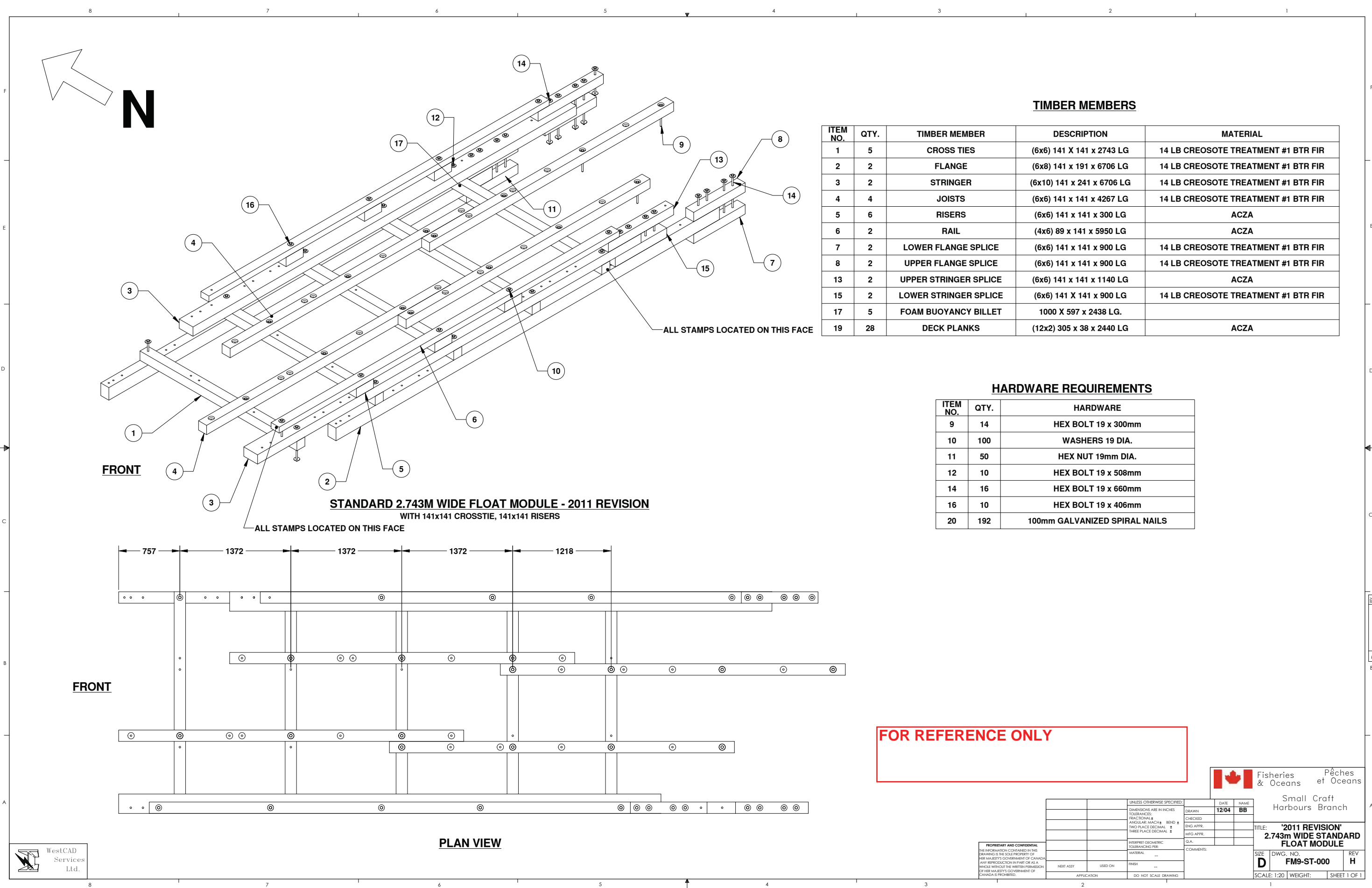
Fisheries & Oceans
Pêches et Océans

Small Craft
Harbours Branch

TITLE: 2.743m WIDE FLOAT
MODULE
2011 REVISION

SIZE: D DWG. NO.: FM9-END-200 REV: G

SCALE: 1:12 WEIGHT: SHEET 1 OF 1



TIMBER MEMBERS

| ITEM NO. | QTY. | TIMBER MEMBER | DESCRIPTION | MATERIAL |
|----------|------|-----------------------|----------------------------|-------------------------------------|
| 1 | 5 | CROSS TIES | (6x6) 141 X 141 x 2743 LG | 14 LB CREOSOTE TREATMENT #1 BTR FIR |
| 2 | 2 | FLANGE | (6x8) 141 x 191 x 6706 LG | 14 LB CREOSOTE TREATMENT #1 BTR FIR |
| 3 | 2 | STRINGER | (6x10) 141 x 241 x 6706 LG | 14 LB CREOSOTE TREATMENT #1 BTR FIR |
| 4 | 4 | JOISTS | (6x6) 141 x 141 x 4267 LG | 14 LB CREOSOTE TREATMENT #1 BTR FIR |
| 5 | 6 | RISERS | (6x6) 141 x 141 x 300 LG | ACZA |
| 6 | 2 | RAIL | (4x6) 89 x 141 x 5950 LG | ACZA |
| 7 | 2 | LOWER FLANGE SPLICE | (6x6) 141 x 141 x 900 LG | 14 LB CREOSOTE TREATMENT #1 BTR FIR |
| 8 | 2 | UPPER FLANGE SPLICE | (6x6) 141 x 141 x 900 LG | 14 LB CREOSOTE TREATMENT #1 BTR FIR |
| 13 | 2 | UPPER STRINGER SPLICE | (6x6) 141 x 141 x 1140 LG | ACZA |
| 15 | 2 | LOWER STRINGER SPLICE | (6x6) 141 X 141 x 900 LG | 14 LB CREOSOTE TREATMENT #1 BTR FIR |
| 17 | 5 | FOAM BUOYANCY BILLET | 1000 X 597 x 2438 LG. | |
| 19 | 28 | DECK PLANKS | (12x2) 305 x 38 x 2440 LG | ACZA |

HARDWARE REQUIREMENTS


| ITEM NO. | QTY. | HARDWARE |
|----------|------|-------------------------------|
| 9 | 14 | HEX BOLT 19 x 300mm |
| 10 | 100 | WASHERS 19 DIA. |
| 11 | 50 | HEX NUT 19mm DIA. |
| 12 | 10 | HEX BOLT 19 x 508mm |
| 14 | 16 | HEX BOLT 19 x 660mm |
| 16 | 10 | HEX BOLT 19 x 406mm |
| 20 | 192 | 100mm GALVANIZED SPIRAL NAILS |

FOR REFERENCE ONLY



PROPRIETARY AND CONFIDENTIAL
THE INFORMATION CONTAINED IN THIS
DRAWING IS THE SOLE PROPERTY OF
HER MAJESTY'S GOVERNMENT OF CANADA.
ANY REPRODUCTION IN PART OR AS A
WHOLE WITHOUT THE WRITTEN PERMISSION
OF HER MAJESTY'S GOVERNMENT OF
CANADA IS PROHIBITED.

| | | | |
|-----------------------------|--|----------------------|-------|
| UNLESS OTHERWISE SPECIFIED: | | DATE | NAME |
| DIMENSIONS ARE IN INCHES | | 12/04 | BB |
| TOLERANCES: | | | |
| FRACTIONAL: ± | | CHECKED | |
| ANGULAR: MATCH ± | | ENG APPR. | |
| TWO PLACE DECIMAL: ± | | MFG APPR. | |
| THREE PLACE DECIMAL: ± | | | |
| INTERPRET GEOMETRIC | | Q.A. | |
| TOLERANCING PER: | | COMMENTS: | |
| MATERIAL | | | |
| NEXT ASSY | | USED ON | FRESH |
| APPLICATION | | DO NOT SCALE DRAWING | |

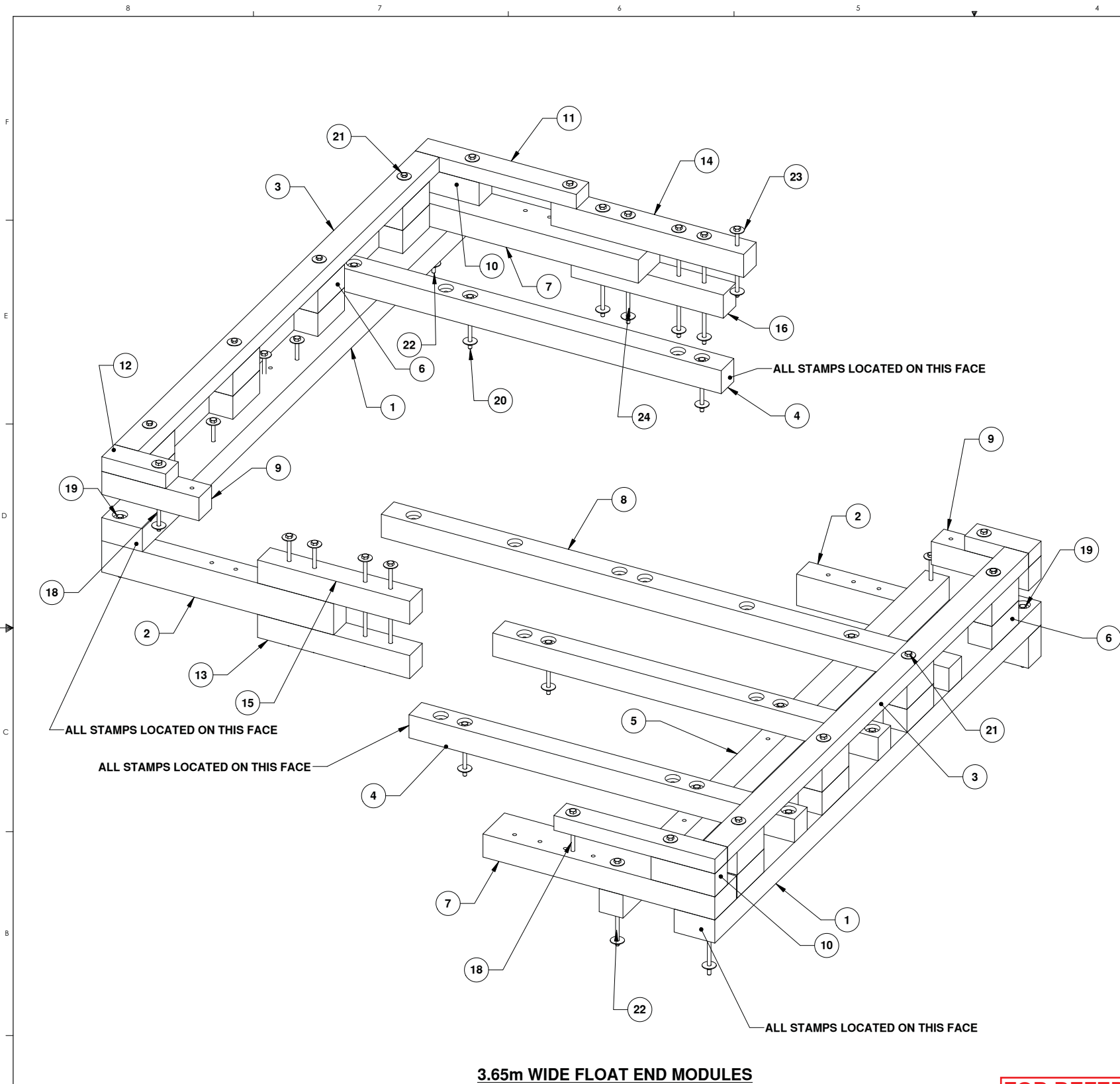


Fisheries & Oceans
Pêches et Océans

Small Craft
Harbours Branch

TITLE: '2011 REVISION'
2.743m WIDE STANDARD
FLOAT MODULE

| | | |
|-------------|------------|--------------|
| SIZE | DWG. NO. | REV |
| D | FM9-ST-000 | H |
| SCALE: 1:20 | WEIGHT: | SHEET 1 OF 1 |



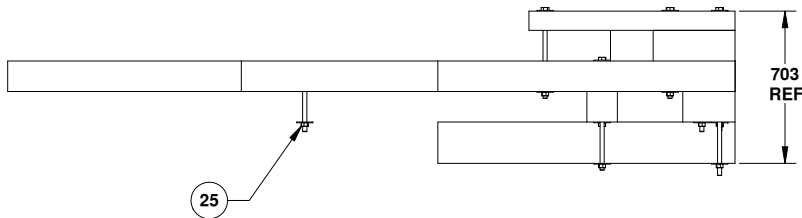
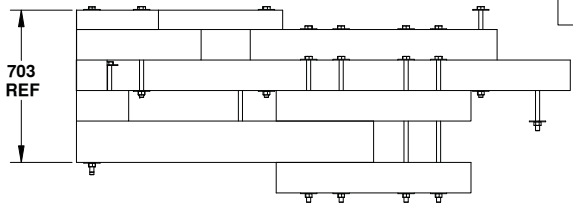
3.65m WIDE FLOAT END MODULES

TIMBER MEMBER REQUIREMENTS

| ITEM NO. | QTY. | TIMBER MEMBER | DESCRIPTION | MATERIAL |
|----------|------|-----------------------|-----------------------------|--------------------------------------|
| 1 | 2 | END CROSSTIE | (6x10) 141 x 241 x 3658 LG. | 14 LB. CREOSOTE TREATMENT #1 BTR FIR |
| 2 | 2 | FLANGE END | (6x8) 141 x 191 x 1372 LG. | 14 LB. CREOSOTE TREATMENT #1 BTR FIR |
| 3 | 2 | END RAIL | (4x6) 89 x 141 x 3374 LG. | ACZA |
| 4 | 3 | JOIST END 'B' | (6x6) 141 x 141 x 2281 LG. | 14 LB. CREOSOTE TREATMENT #1 BTR FIR |
| 5 | 1 | STANDARD CROSSTIE | (6x6) 141 x 141 x 3658 LG. | 14 LB. CREOSOTE TREATMENT #1 BTR FIR |
| 6 | 16 | END BLOCK | (6x6) 141 x 141 x 300 LG. | ACZA |
| 7 | 2 | STRINGER END | (6x10) 141 X 241 x 1372 LG. | 14 LB. CREOSOTE TREATMENT #1 BTR FIR |
| 8 | 1 | MODIFIED JOIST | (6x6) 141 x 141 x 3359 LG. | 14 LB. CREOSOTE TREATMENT #1 BTR FIR |
| 9 | 2 | SPACER END 'B' | (6x6) 141 x 141 x 575 LG. | ACZA |
| 10 | 2 | SPACER END | (6x6) 141 x 141 x 378 LG. | ACZA |
| 11 | 2 | RAIL END | (4x6) 89 x 141 x 952 LG. | ACZA |
| 12 | 2 | RAIL END 'B' | (4x6) 89 x 141 x 378 LG. | ACZA |
| 13 | 1 | LOWER FLANGE SPLICE | (6x6) 141 x 141 x 900 LG. | 14 LB. CREOSOTE TREATMENT #1 BTR FIR |
| 14 | 1 | UPPER STRINGER SPLICE | (6x6) 141 x 141 x 1140 LG. | ACZA |
| 15 | 1 | UPPER FLANGE SPLICE | (6x6) 141 x 141 x 900 LG. | 14 LB. CREOSOTE TREATMENT #1 BTR FIR |
| 16 | 1 | LOWER STRINGER SPLICE | (6x6) 141 x 141 x 900 LG. | 14 LB. CREOSOTE TREATMENT #1 BTR FIR |

HARDWARE REQUIREMENTS

| ITEM NO. | QTY. | DESCRIPTION |
|----------|------|---------------------|
| 18 | 7 | HEX BOLT 19 x 406mm |
| 19 | 2 | HEX BOLT 19 x 356mm |
| 20 | 13 | HEX BOLT 19 x 300mm |
| 21 | 8 | HEX BOLT 19 x 557mm |
| 22 | 4 | HEX BOLT 19 x 508mm |
| 23 | 84 | WASHER 19mm DIA. |
| 24 | 8 | HEX BOLT 19 x 660mm |
| 25 | 42 | HEX NUT 19mm DIA. |

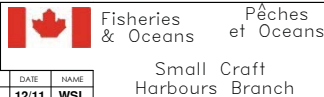


FOR REFERENCE



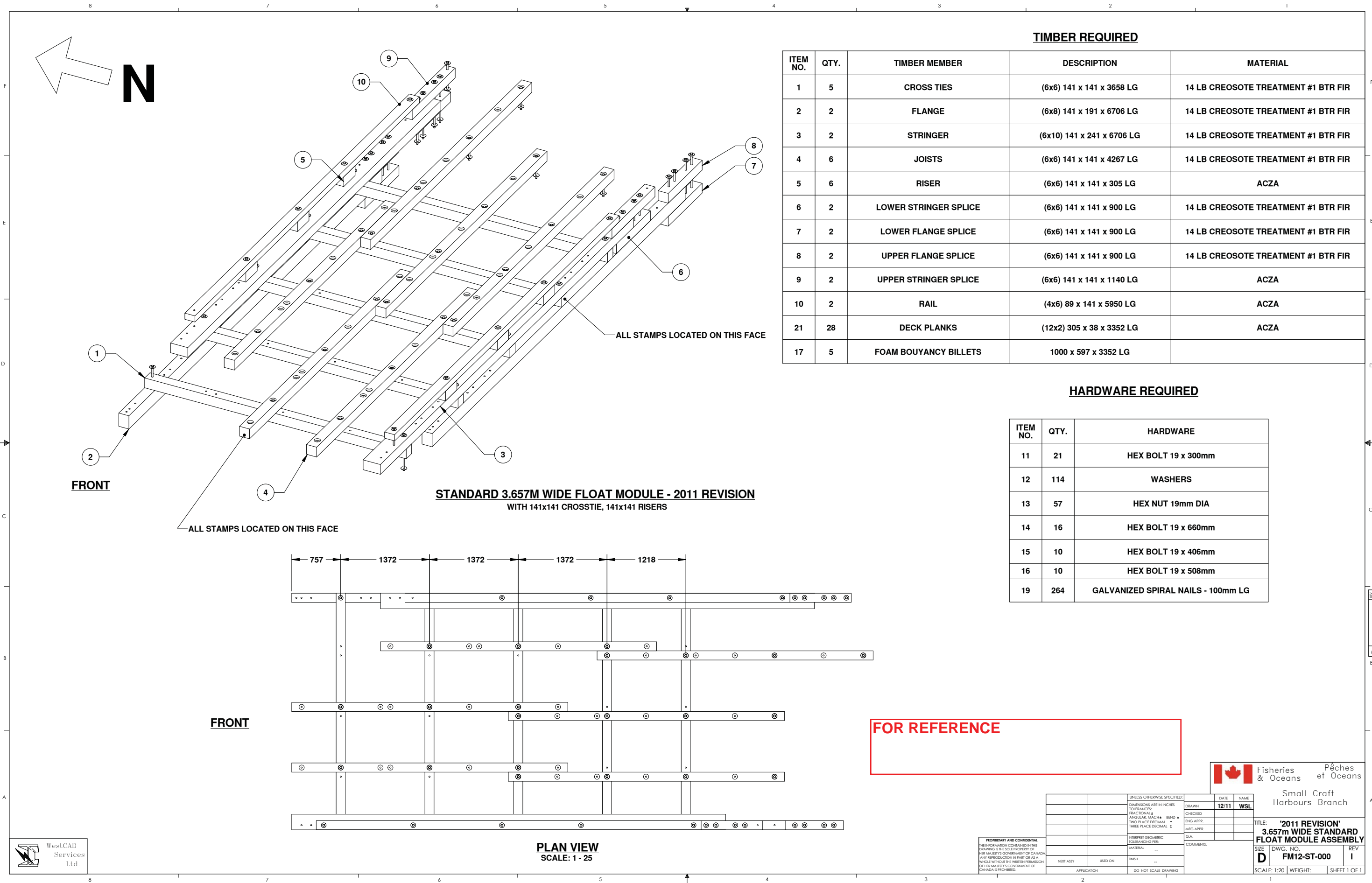
PROPRIETARY AND CONFIDENTIAL
THE INFORMATION CONTAINED IN THIS
DRAWING IS THE SOLE PROPERTY OF
HER MAJESTY'S GOVERNMENT OF CANADA.
ANY REPRODUCTION IN PART OR AS A
WHOLE WITHOUT THE WRITTEN PERMISSION
OF HER MAJESTY'S GOVERNMENT OF
CANADA IS PROHIBITED.

| UNLESS OTHERWISE SPECIFIED: | | DATE | NAME |
|--------------------------------------|----------------------|------|------|
| DRAWN: | 12/11 | WSL | |
| CHECKED: | | | |
| ENG APPR: | | | |
| MFG APPR: | | | |
| Q.A. | | | |
| COMMENTS: | | | |
| INTERPRET GEOMETRIC TOLERANCING PER: | | | |
| MATERIAL: | | | |
| FINISH: | | | |
| NEXT ASSY: | USED ON: | | |
| APPLICATION: | DO NOT SCALE DRAWING | | |



TITLE: 3.65m WIDE FLOAT
MODULE
2011 REVISION

| SIZE | DWG. NO. | REV |
|-------------|--------------|--------------|
| D | FM12-END-200 | J |
| SCALE: 1:12 | WEIGHT: | SHEET 1 OF 1 |



| TIMBER REQUIRED | | | | |
|-----------------|------|-----------------------|----------------------------|-------------------------------------|
| ITEM NO. | QTY. | TIMBER MEMBER | DESCRIPTION | MATERIAL |
| 1 | 5 | CROSS TIES | (6x6) 141 x 141 x 3658 LG | 14 LB CREOSOTE TREATMENT #1 BTR FIR |
| 2 | 2 | FLANGE | (6x8) 141 x 191 x 6706 LG | 14 LB CREOSOTE TREATMENT #1 BTR FIR |
| 3 | 2 | STRINGER | (6x10) 141 x 241 x 6706 LG | 14 LB CREOSOTE TREATMENT #1 BTR FIR |
| 4 | 6 | JOISTS | (6x6) 141 x 141 x 4267 LG | 14 LB CREOSOTE TREATMENT #1 BTR FIR |
| 5 | 6 | RISER | (6x6) 141 x 141 x 305 LG | ACZA |
| 6 | 2 | LOWER STRINGER SPLICE | (6x6) 141 x 141 x 900 LG | 14 LB CREOSOTE TREATMENT #1 BTR FIR |
| 7 | 2 | LOWER FLANGE SPLICE | (6x6) 141 x 141 x 900 LG | 14 LB CREOSOTE TREATMENT #1 BTR FIR |
| 8 | 2 | UPPER FLANGE SPLICE | (6x6) 141 x 141 x 900 LG | 14 LB CREOSOTE TREATMENT #1 BTR FIR |
| 9 | 2 | UPPER STRINGER SPLICE | (6x6) 141 x 141 x 1140 LG | ACZA |
| 10 | 2 | RAIL | (4x6) 89 x 141 x 5950 LG | ACZA |
| 21 | 28 | DECK PLANKS | (12x2) 305 x 38 x 3352 LG | ACZA |
| 17 | 5 | FOAM BOUYANCY BILLETS | 1000 x 597 x 3352 LG | |

| HARDWARE REQUIRED | | |
|-------------------|------|------------------------------------|
| ITEM NO. | QTY. | HARDWARE |
| 11 | 21 | HEX BOLT 19 x 300mm |
| 12 | 114 | WASHERS |
| 13 | 57 | HEX NUT 19mm DIA |
| 14 | 16 | HEX BOLT 19 x 660mm |
| 15 | 10 | HEX BOLT 19 x 406mm |
| 16 | 10 | HEX BOLT 19 x 508mm |
| 19 | 264 | GALVANIZED SPIRAL NAILS - 100mm LG |

FOR REFERENCE



PLAN VIEW
SCALE: 1 - 25

PROPRIETARY AND CONFIDENTIAL
THE INFORMATION CONTAINED IN THIS DRAWING IS THE SOLE PROPERTY OF HER MAJESTY'S GOVERNMENT OF CANADA. ANY REPRODUCTION IN PART OR AS A WHOLE WITHOUT THE WRITTEN PERMISSION OF HER MAJESTY'S GOVERNMENT OF CANADA IS PROHIBITED.

| | | |
|--------------------------------------|-------|------|
| UNLESS OTHERWISE SPECIFIED: | DATE | NAME |
| DIMENSIONS ARE IN INCHES | 12/11 | WSL |
| TOLERANCES: | | |
| FRACTIONAL: ± | | |
| ANGULAR: MATCH ± | | |
| BEND ± | | |
| TWO PLACE DECIMAL ± | | |
| THREE PLACE DECIMAL ± | | |
| INTERPRET GEOMETRIC TOLERANCING PER: | | |
| MATERIAL | | |
| FINISH | | |
| USED ON | | |
| APPLICATION | | |

COMMENTS:

Q.A.

Small Craft Harbours Branch

TITLE: '2011 REVISION' 3.657m WIDE STANDARD FLOAT MODULE ASSEMBLY

SIZE DWG. NO. REV

D FM12-ST-000 I

SCALE: 1:20 WEIGHT: SHEET 1 OF 1