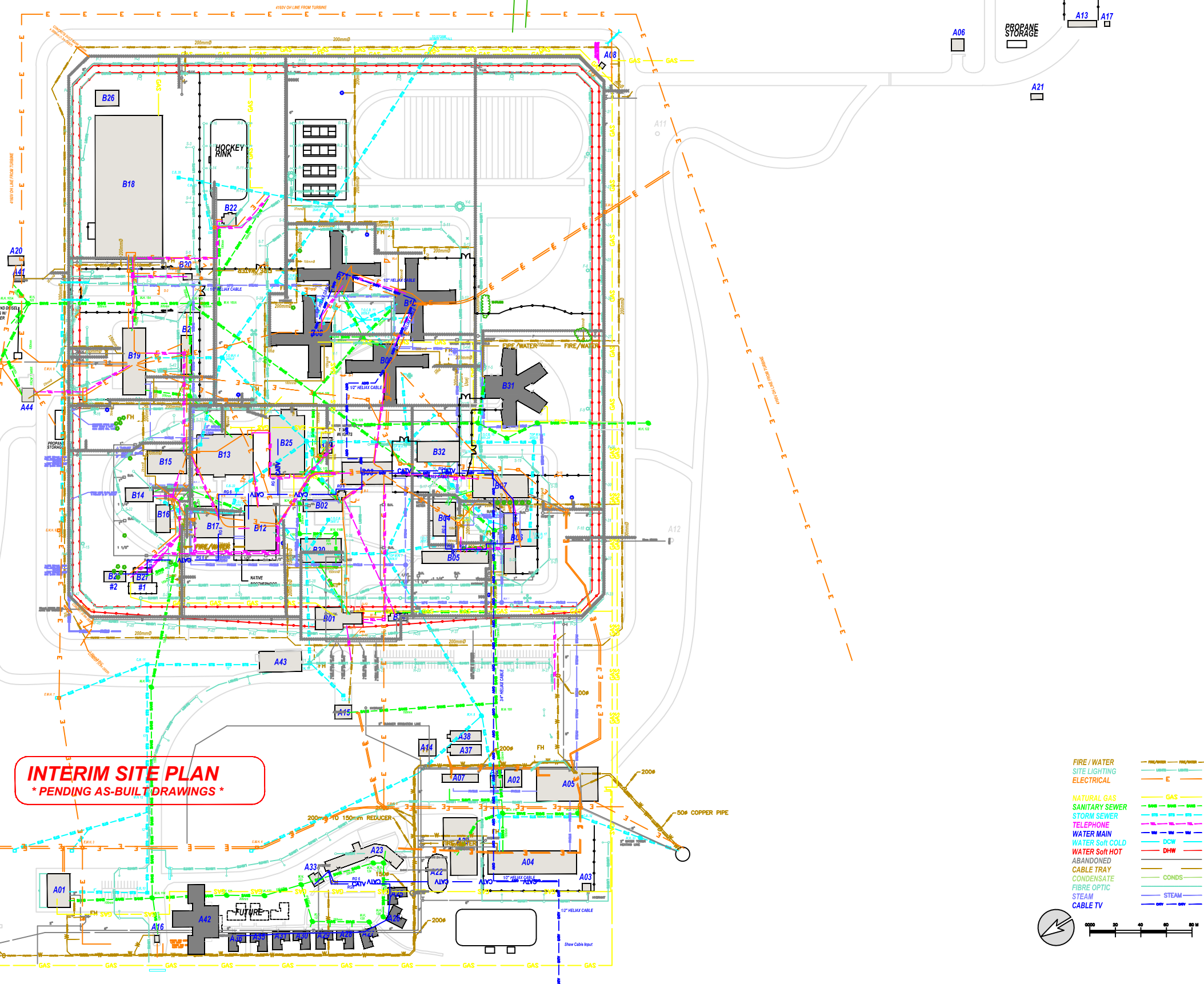




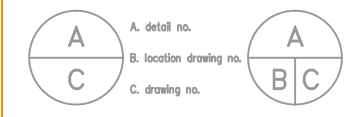
INTERIM SITE PLAN
* PENDING AS-BUILT DRAWINGS *



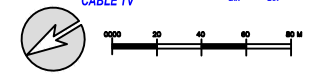
INTERIM SITE PLAN
* PENDING AS-BUILT DRAWINGS *

- BUILDINGS**
- A-01 ADMINISTRATION
 - A-02 FIRE HALL
 - A-03 STORAGE
 - A-04 STORES
 - A-05 CENTRAL HEATING PLANT
 - A-06 STORAGE
 - A-07 OLD GREENHOUSE
 - A-08 GUARD TOWER T3
 - A-09 GUARD TOWER T1
 - A-10 GUARD TOWER #2 (REMOVED)
 - A-11 GUARD TOWER #3 (REMOVED)
 - A-12 GUARD TOWER #4 (REMOVED)
 - A-13 RIFLE RANGE
 - A-14 GREENHOUSE STORAGE
 - A-15 ARMOURY
 - A-16 CHECKPOINT CHARLIE
 - A-17 GAS HUT
 - A-18 STAFF TRAINING CENTRE (DEMOLISHED)
 - A-19 PWC TRAILER (DEMOLISHED)
 - A-20 HAZARDOUS STORAGE
 - A-21 SMOKE HOUSE
 - A-22 SPRUNG STRUCTURE
 - A-23 ANNEX ADMINISTRATION
 - A-24 GARAGE
 - A-25 ANNEX HOUSE A-1
 - A-26 ANNEX HOUSE B-1
 - A-27 ANNEX HOUSE C-3
 - A-28 ANNEX HOUSE D-4
 - A-29 ANNEX HOUSE E-5
 - A-30 ANNEX HOUSE F-6
 - A-31 ANNEX HOUSE G-7
 - A-32 COMPOSTER BUILDING
 - A-33 PFV- ANNEX
 - A-34 HOBBY SHOP
 - A-35 ANNEX HOUSE H-8
 - A-36 ANNEX HOUSE I-9
 - A-37 GREENHOUSE
 - A-38 GREENHOUSE
 - A-39 MULTI-PURPOSE BUILDING
 - A-40 SILVER STORAGE BUILDING
 - A-41 STORAGE
 - A-42 50 BED LIVING UNIT
 - A-43 GO BUILDING
 - A-44 GENERATOR BUILDING
 - A-45 STORAGE BUILDING
 - B-01 MAIN GATE
 - B-02 STAFF LOUNGE
 - B-03 ADMINISTRATION
 - B-04 INTAKE ASSESSMENT UNIT
 - B-05 DISSOCIATION
 - B-06 A AND D
 - B-07 HEALTH CARE INTAKE UNIT
 - B-08 LIVING UNITS #8
 - B-09 LIVING UNITS #9
 - B-10 LIVING UNITS #10
 - B-11 LIVING UNITS #11
 - B-12 NATIVE CULTURAL CENTRE
 - B-13 KITCHEN
 - B-14 CATHOLIC CHAPEL
 - B-15 S.I.S.
 - B-16 PROTESTANT CHAPEL
 - B-17 SCHOOL
 - B-18 CORCAN
 - B-19 MAINTENANCE BUILDING
 - B-20 SALLY PORT
 - B-21 MAINTENANCE STORAGE
 - B-22 FIELDHOUSE SLAB ELECT-SUB
 - B-23 CURLING RINK (DEMOLISHED)
 - B-24 MCCP
 - B-25 GYMNASIUM
 - B-26 INDUSTRIES STORAGE
 - B-27 FAMILY VISITING #1 (S)
 - B-28 FAMILY VISITING #2 (N)
 - B-29 INMATE CANTEEN (DEMOLISHED)
 - B-30 PROGRAM/ADMIN BUILDING
 - B-31 LIVING UNIT
 - B-32 GI BUILDING

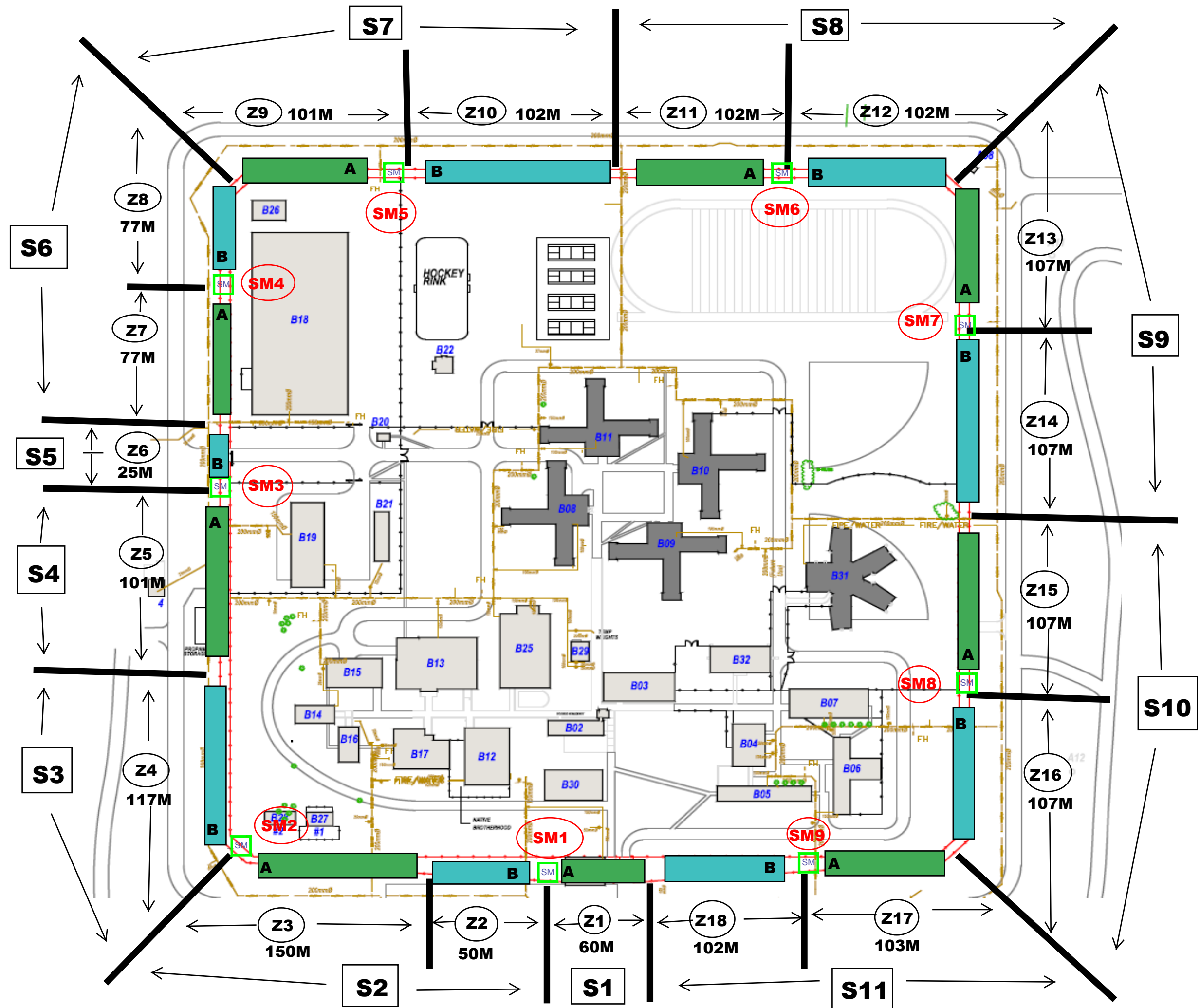
SITE UTILITIES



- FIRE / WATER
- SITE LIGHTING
- ELECTRICAL
- NATURAL GAS
- SANITARY SEWER
- STORM SEWER
- TELEPHONE
- WATER MAIN
- WATER Soft COLD
- WATER Soft HOT
- ABANDONED
- CABLE TRAY
- CONDENSATE
- FIBRE OPTIC
- STEAM
- CABLE TV



INSTITUTION	DRUMHELLER INSTITUTION DRUMHELLER, AB
DESCRIPTION	SITE UTILITIES
SCALE	1:3500
LAST UPDATE	

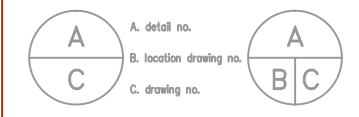


NOTES:

 = Sensor Module

S = SECTOR

Z = ZONES



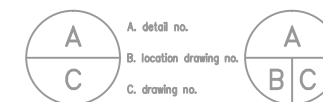
INSTITUTION
 DRUMHELLER INSTITUTION
 DRUMHELLER, AB

DESCRIPTION
 OVERALL SITE PLAN
PIDS MDS

ES02

NOTES:

S = PIDS Speaker

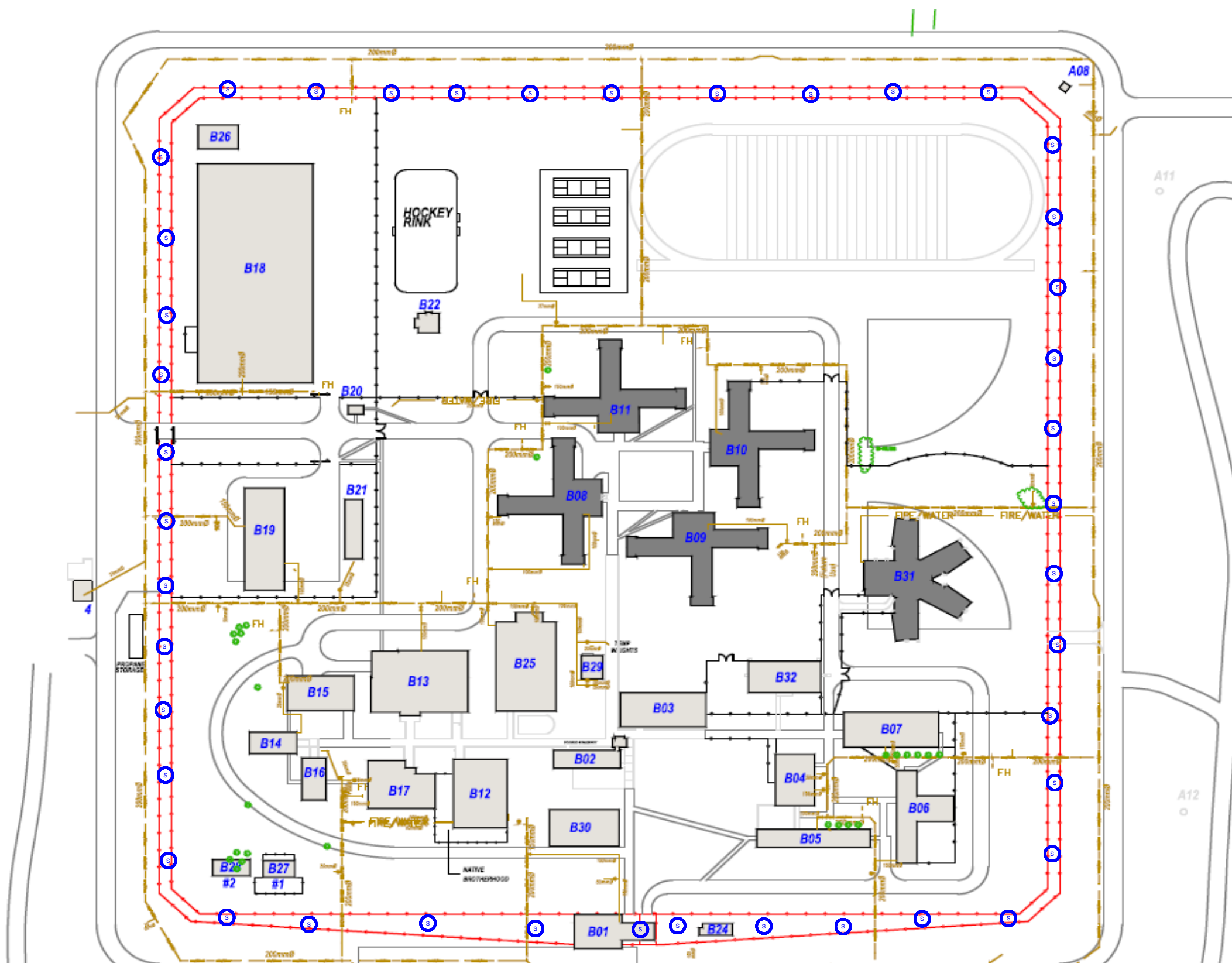


INSTITUTION
 DRUMHELLER INSTITUTION
 DRUMHELLER, AB

DESCRIPTION
 OVERALL SITE PLAN

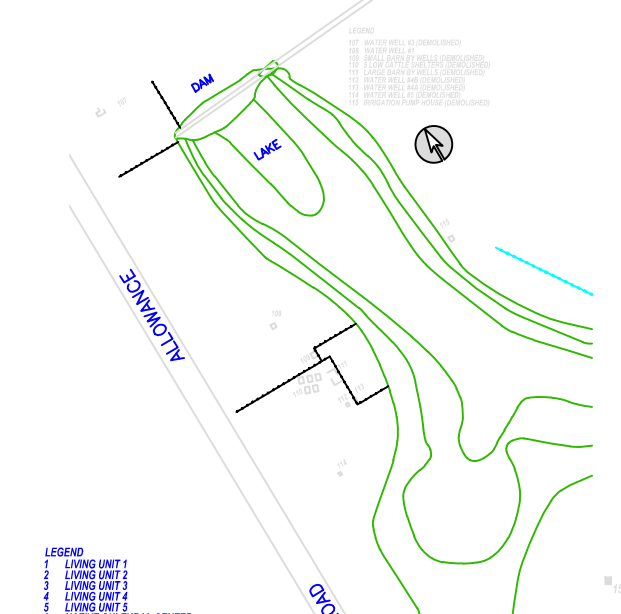
PIDS PA

ES03

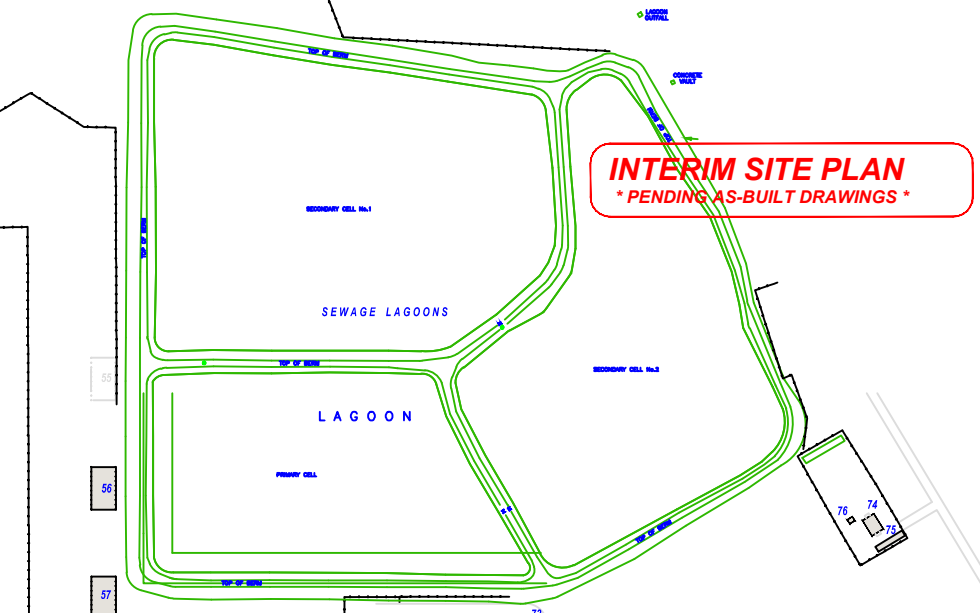




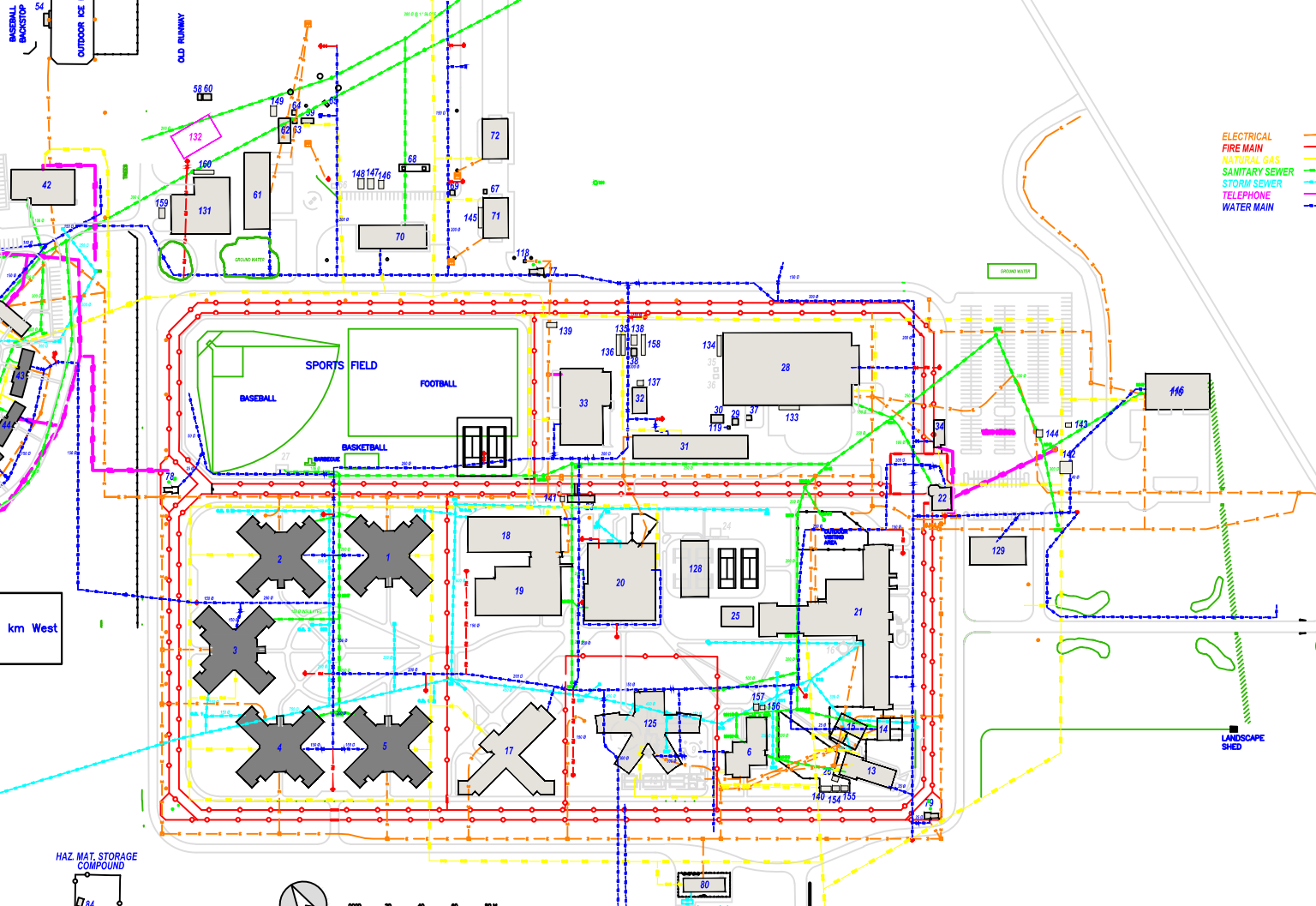
WATER WELL AREA
SCALE 1:6000



INTERIM SITE PLAN
* PENDING AS-BUILT DRAWINGS *



- LEGEND**
- 1 LIVING UNIT 1
 - 2 LIVING UNIT 2
 - 3 LIVING UNIT 3
 - 4 LIVING UNIT 4
 - 5 LIVING UNIT 5
 - 6 NATIVE CULTURAL CENTER
 - 7 WATER RESERVOIR (DEMOLISHED)
 - 8 WATER RESERVOIR (DEMOLISHED)
 - 9 WATER RESERVOIR (DEMOLISHED)
 - 10 STORAGE SHED UNDER WATER TOWER
 - 11 GREENHOUSE
 - 12 CHURCH
 - 13 CHAPEL
 - 14 PRIVATE FAMILY VISITS UNIT #1,2
 - 15 PRIVATE FAMILY VISITS UNIT #3,4
 - 16
 - 17 DISSOCIATION/SEGREGATION HEALTH
 - 18 GYMNASIUM
 - 19 RECREATION AND HOBBY SHOP
 - 20 KITCHEN AND DINING HALL
 - 21 ADMINISTRATION BUILDING
 - 22 GATE HOUSE
 - 23 CHECK POINT CHARLIE
 - 24
 - 25 INMATE SMOKING AREA
 - 26 NATIVE SACRED GROUND STORAGE SHED
 - 27
 - 28 CORCAN INDUSTRIES
 - 29 MAINTENANCE FLAMMABLE STORES
 - 30 MAINTENANCE STORAGE
 - 31 MAINTENANCE
 - 32 MAINTENANCE STORAGE BUILDING
 - 33 LAUNDRY/DATAQUICK
 - 34 MCCP
 - 35 RECYCLING SHED #1 (DEMOLISHED)
 - 36 RECYCLING SHED #2 (DEMOLISHED)
 - 37 CORCAN STORAGE SHED
 - 38 LAWNMOWER, LANDSCAPING STORAGE
 - 39 ANNEX KITCHEN AND ADMINISTRATION BUILDING
 - 40 ANNEX ACTIVITY BUILDING
 - 41 ANNEX RECREATIONAL BUILDING
 - 42 ANNEX PRIVATE FAMILY VISITS
 - 43 ANNEX LIVING UNIT #1
 - 44 ANNEX LIVING UNIT #2
 - 45 ANNEX LIVING UNIT #3
 - 46 ANNEX LIVING UNIT #4
 - 47 ANNEX LIVING UNIT #5
 - 48 ANNEX LIVING UNIT #6
 - 49 ANNEX LIVING UNIT #7
 - 50 ANNEX LIVING UNIT #8
 - 51 ANNEX GARDENING STORAGE
 - 52 ANNEX NATIVE GROUND STORAGE BUILDING
 - 53 ANNEX NATIVE GROUND STORAGE BUILDING
 - 54 ANNEX ATCO TRAILER- HOCKEY RINK
 - 55
 - 56 MIDDLE HAY BARN
 - 57 SOUTH HAY BARN
 - 58 PUBLIC WORKS STORAGE
 - 59 PUBLIC WORKS TRAILER
 - 60 PUBLIC WORKS TOOL SHED
 - 61 ANNEX CORCAN WAREHOUSE
 - 62 ANNEX MAINTENANCE BUILDING
 - 63 ANNEX MAINTENANCE SHED #1
 - 64 ANNEX MAINTENANCE SHED #2
 - 65 PROPANE STORAGE
 - 66
 - 67 ANNEX FUEL MAN SHELTER
 - 68 GAS AND DIESEL FUEL DISPENSER
 - 69 AGR-CENTRE ACTIVITY STORAGE SHED
 - 70 AGR-BUSINESS CENTRE
 - 71 AGR-CENTRE MACHINERY STORAGE SHED#1
 - 72 AGR-CENTRE MACHINERY STORAGE SHED#2
 - 73 SEWAGE DISPOSAL PLANT
 - 74 SHOOTING RANGE OFFICE
 - 75 SMOKE HOUSE
 - 76 SHOOTING RANGE STORAGE SHED
 - 77 NORTH SECURITY TOWER
 - 78 WEST SECURITY TOWER
 - 79 SOUTHEAST SECURITY TOWER
 - 80 ELECTRICAL SUB STATION
 - 81
 - 82 LOW SHED (DEMOLISHED)
 - 83
 - 84 HAZARDOUS WASTE STORAGE
 - 85 COMPOST BUILDING
 - 86 CONCRETE SILAGE PIT (COW CALF)
 - 87
 - 88 CATTLE OPERATION STORAGE
 - 89 GRANARY
 - 90 GRANARY
 - 91 FEED STORAGE
 - 92 CATTLE OPERATION HAY BARN
 - 93 OPEN FEEDING STATION FOR PEN #1
 - 94 OPEN FEEDING STATION FOR PEN #2, 3
 - 95 OPEN FEEDING STATION FOR PEN #4
 - 96 OPEN FEEDING STATION FOR PEN #5
 - 97 OPEN FEEDING STATION FOR PEN #7
 - 98 OPEN FEEDING STATION FOR PEN #8 (DEMOLISHED)
 - 99 OPEN FEEDING STATION FOR PEN #9, 10 (DEMOLISHED)
 - 100 OPEN FEEDING STATION FOR PEN #11, 12 (DEMOLISHED)
 - 101 OPEN FEEDING STATION (COW CALF) (DEMOLISHED)
 - 102 OPEN FEEDING STATION (COW CALF) (DEMOLISHED)
 - 103 CALVING BARN AND VET AREA
 - 104
 - 105 NATURAL GAS STATION
 - 106 FEEL SHED (DEMOLISHED)
 - 107
 - 108 STORES
 - 109 ANTHONY HENDAY SUBSTATION
 - 110 ANNEX USED OIL RECOVERY STATION
 - 111 MAINTENANCE USED OIL RECOVERY STATION
 - 112 ANNEX HOUSING 9
 - 113 ANNEX HOUSING 10
 - 114 ANNEX HOUSING 11
 - 115 ANNEX HOUSING 12
 - 116 ANNEX HOUSING 13
 - 117 56 BED INTAKE UNIT
 - 118 ANNEX PPV NORTH
 - 119 ANNEX ADMIN BUILDING NORTH
 - 120 PROGRAMS BUILDING
 - 121 EAST POINT
 - 122 POTABLE WATER BUILDING
 - 123 PRODUCTION KITCHEN
 - 124 GREEN HOUSE
 - 125
 - 126
 - 127
 - 128
 - 129
 - 130
 - 131
 - 132
 - 133 SEA CAN STORAGE - CORCAN
 - 134 SEA CAN STORAGE - CORCAN
 - 135 SEA CAN STORAGE - Works & Eng.
 - 136 SEA CAN STORAGE - Works & Eng.
 - 137 STORAGE - Works & Eng.
 - 138 GARAGE - Aboriginal Initiatives
 - 139 WOOD STORAGE - Aboriginal Initiatives
 - 140 WOOD STORAGE - Aboriginal Initiatives
 - 141 STORAGE
 - 142 BBQ SHELTER
 - 143 BBQ STORAGE
 - 144 QUAD STORAGE GARAGE
 - 145 SEA CAN STORAGE - Works & Eng.
 - 146 STORAGE - Works & Eng.
 - 147 GARAGE - Works & Eng.
 - 148 GARAGE - PWSC & ADGA
 - 149 GARAGE - Works & Eng.
 - 150 SWEAT LODGE - Aboriginal Initiatives
 - 151 FIREWOOD STORAGE - Aboriginal Initiatives
 - 152 FIREWOOD STORAGE - Aboriginal Initiatives
 - 153 8 FORAGE - Aboriginal Initiatives



- ELECTRICAL
- FIRE MAIN
- NATURAL GAS
- SANITARY SEWER
- STORM SEWER
- TELEPHONE
- WATER MAIN

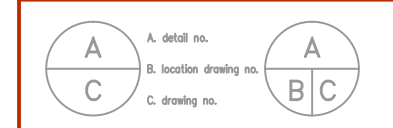
BOWDEN MEDIUM AND MINIMUM SECURITY AREAS
SCALE 1:4000

INTERIM SITE PLAN
* PENDING AS-BUILT DRAWINGS *

FARM OPERATION (CLOSED)
SCALE 1:4000



SITE UTILITIES

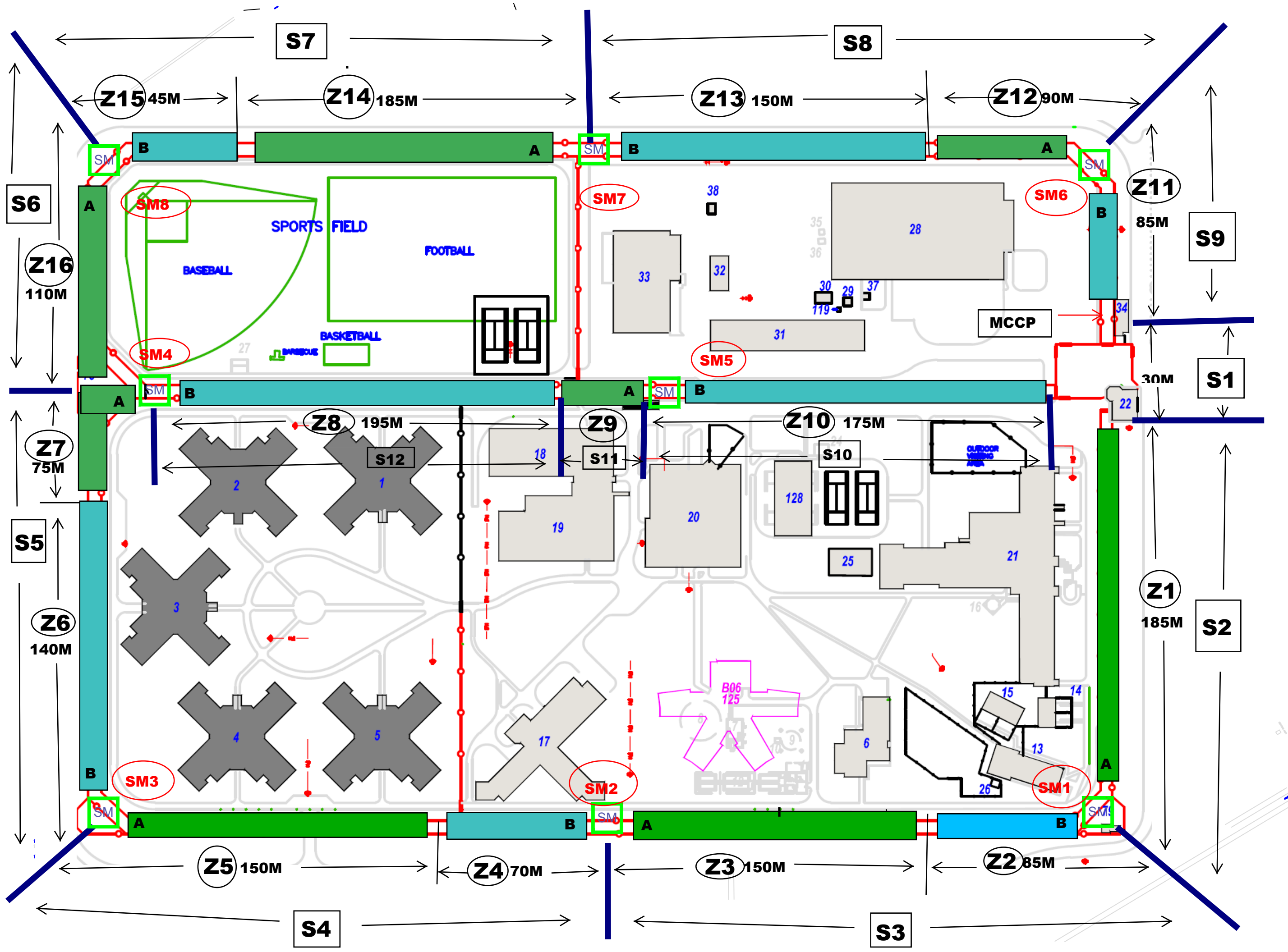


INSTITUTION
BOWDEN INSTITUTION
BOWDEN, AB


DESCRIPTION
SITE UTILITIES

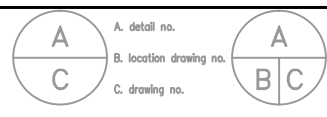
SCALE

LAST UPDATE



NOTES:

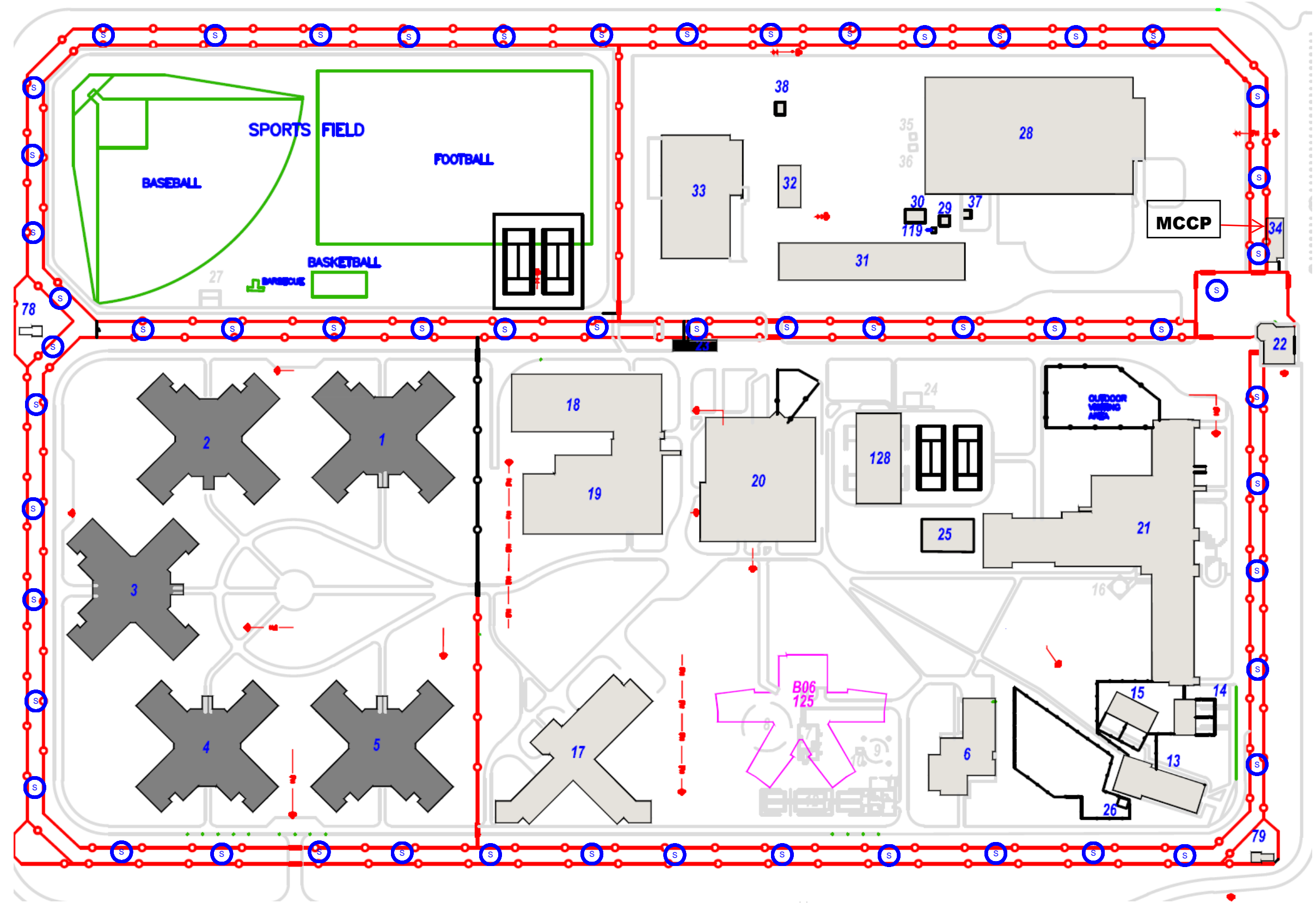
 = Sensor Module
S = SECTOR
Z = ZONE



BOWDEN INSTITUTION
BOWDEN, AB

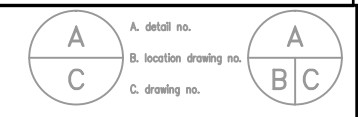
OVERALL SITE PLAN
PIDS MDS

ES05



NOTES:

 = PIDS Speaker



BOWDEN INSTITUTION
 BOWDEN, AB

OVERALL SITE PLAN
PIDS PA

ES06