



National Defence Headquarters
Ottawa, Ontario
K1A 0K2

Quartier général de la Défense nationale
Ottawa (Ontario)
K1A 0K2

REQUEST FOR PROPOSAL DEMANDE DE PROPOSITION

RETURN BIDS TO: RETOURNER LES SOUMISSIONS À :

Bid Receiving – PWGSC / Réception des
soumissions - TPSGC
11 Laurier St. / 11 rue Laurier
Place du Portage, Phase III
Core 0B2 / Noyau 0B2
Gatineau
Québec
K1A 0S5

Proposal To: National Defence Canada

We hereby offer to sell to Her Majesty the Queen in right of Canada, in accordance with the terms and conditions set out herein, referred to herein or attached hereto, the goods and services listed herein and on any attached sheets at the price(s) set out therefore.

Proposition à : Défense nationale Canada

Nous offrons par la présente de vendre à Sa Majesté la Reine du chef du Canada, aux conditions énoncées ou incluses par référence dans la présente et aux annexes ci-jointes, les biens et services énumérés ici et sur toute feuille ci-annexée, au(x) prix indique(s).

Title/Titre Manual Milling Machines	Solicitation No – N° de l’invitation W8486-184197/A
Date of Solicitation – Date de l’invitation 24 October 2017	
Address Enquiries to – Adresser toutes questions à Department of National Defence 101 Colonel By Drive Ottawa, ON K1A 0K2 Valerie Bleskie, DLP 7-1-3-1	
Telephone No. – N° de téléphone 819-939-6477	FAX No – N° de fax 819-994-7659
Destination Department of National Defence C/O QETE Warehouse Ramp 8, Room C-1113 45 Blvd. Sacre Coeur Gatineau, Quebec J8X-1C6	

Instructions:

Municipal taxes are not applicable. Unless otherwise specified herein all prices quoted must include all applicable Canadian customs duties, GST/HST, excise taxes and are to be delivered Delivery Duty Paid including all delivery charges to destination(s) as indicated. The amount of the Goods and Services Tax/Harmonized Sales Tax is to be shown as a separate item.

Instructions: Les taxes municipales ne s'appliquent pas. Sauf indication contraire, les prix indiqués doivent comprendre les droits de douane canadiens, la TPS/TVH et la taxe d'accise. Les biens doivent être livrés « rendu droits acquittés », tous frais de livraison compris, à la ou aux destinations indiquées. Le montant de la taxe sur les produits et services/taxe de vente harmonisée doit être indiqué séparément.

**Solicitation Closes –
L’invitation prend fin**

At – à: 14 :00 Eastern Standard Time

On - le : December 4, 2017

Delivery required - Livraison exigée	Delivery offered - Livraison proposée
See Herein	
Vendor Name and Address - Raison sociale et adresse du fournisseur	
Name and title of person authorized to sign on behalf of vendor (type or print) - Nom et titre de la personne autorisée à signer au nom du fournisseur (caractère d'imprimerie)	
Name/Nom _____	Title/Titre _____
Signature _____	Date _____

TABLE OF CONTENTS

PART 1 - GENERAL INFORMATION.....	3
1.1 SECURITY REQUIREMENTS	3
1.2 STATEMENT OF WORK	3
1.3 DEBRIEFINGS.....	3
1.4 TRADE AGREEMENTS.....	3
PART 2 - BIDDER INSTRUCTIONS.....	3
2.1 STANDARD INSTRUCTIONS, CLAUSES AND CONDITIONS.....	3
2.2 SUBMISSION OF BIDS	4
2.3 IMPROVEMENT OF REQUIREMENT DURING SOLICITATION PERIOD.....	4
2.4 ENQUIRIES - BID SOLICITATION	4
2.5 APPLICABLE LAWS.....	5
2.6 EQUIPMENT TO BE REMOVED.....	5
2.7 MANDATORY SITE VISIT	5
2.8 SACC MANUAL CLAUSES.....	5
PART 3 - BID PREPARATION INSTRUCTIONS	5
3.1 BID PREPARATION INSTRUCTIONS.....	5
SECTION I: TECHNICAL BID.....	6
SECTION II: FINANCIAL BID	6
3.1.1 ELECTRONIC PAYMENT OF INVOICES – BID.....	7
3.1.2 EXCHANGE RATE.....	7
SECTION III: CERTIFICATIONS.....	7
SECTION IV: ADDITIONAL INFORMATION	7
PART 4 - EVALUATION PROCEDURES AND BASIS OF SELECTION.....	7
4.1 EVALUATION PROCEDURES	7
4.1.1 MANDATORY SITE VISIT	7
4.1.2 MANDATORY TECHNICAL EVALUATION.....	7
4.1.3 FINANCIAL EVALUATION	7
4.1.4 BASIS OF SELECTION	8
PART 5 – CERTIFICATIONS AND ADDITIONAL INFORMATION.....	8
5.1 CERTIFICATIONS PRECEDENT TO CONTRACT AWARD AND ADDITIONAL INFORMATION.....	8
5.1.1 TRADE CERTIFICATIONS.....	8
5.2 INTEGRITY PROVISIONS – REQUIRED DOCUMENTATION.....	8
5.2.1 FEDERAL CONTRACTORS PROGRAM FOR EMPLOYMENT EQUITY - BID CERTIFICATION.....	8
PART 6 - RESULTING CONTRACT CLAUSES.....	9
6.1 SECURITY REQUIREMENTS	9
6.2 STATEMENT OF WORK	9
6.3 STANDARD CLAUSES AND CONDITIONS.....	9
6.3.1 GENERAL CONDITIONS.....	10
6.3.2 SUPPLEMENTAL GENERAL CONDITIONS.....	10
6.4 DELIVERY DATE.....	10
6.4.1 DELIVERY.....	10
6.5 AUTHORITIES.....	10
6.6 PAYMENT.....	11
6.6.1 BASIS OF PAYMENT – FIRM PRICE, FIRM UNIT PRICE(S) OR FIRM LOT PRICE(S)	11

6.6.1.1	TRADE-IN VALUE	12
6.6.2	SINGLE PAYMENT	12
6.6.3	SACC MANUAL CLAUSES.....	12
6.6.4	ELECTRONIC PAYMENT OF INVOICES – CONTRACT	12
6.6.5	INVOICING INSTRUCTIONS	12
6.6.6	EQUIPMENT TO BE REMOVED TRADE-IN VALUE.....	12
6.7	CERTIFICATIONS.....	12
6.7.1	COMPLIANCE	13
6.8	APPLICABLE LAWS.....	13
6.9	PRIORITY OF DOCUMENTS	13
6.10	DEFENCE CONTRACT	13
6.11	SACC MANUAL CLAUSES.....	13
6.12	PACKAGING REQUIREMENT USING SPECIFICATION D-LM-008-036/SF-000	14
6.13	INSPECTION AND ACCEPTANCE.....	14
6.14	CONDITION OF MATERIAL – CONTRACT.....	14
6.15	LIFETIME SPARES.....	14
ANNEX "A"	15
STATEMENT OF WORK.....		15
ANNEX "B"	27
MANDATORY TECHNICAL EVALUATION CRITERIA.....		27
ANNEX "C"	36
ATTACHMENT 1 TO PART 3, PRICING SCHEDULE.....		36
ANNEX "D"	38
SECURITY REQUIREMENTS CHECK LIST.....		38
ANNEX "E" TO PART 3 OF THE - BID SOLICITATION.....		42
ELECTRONIC PAYMENT INSTRUMENTS.....		42
ANNEX "F"	43
COMMERCIAL GENERAL LIABILITY INSURANCE.....		43

PART 1 - GENERAL INFORMATION

1.1 Security Requirements

1. Before award of a contract, the following conditions must be met:
 - (a) the Bidder must hold a valid organization security clearance as indicated in Part 6 - Resulting Contract Clauses;
 - (b) the Bidder's proposed individuals requiring access to classified or protected information, assets or sensitive work site(s) must meet the security requirements as indicated in Part 6 - Resulting Contract Clauses;
 - (c) the Bidder must provide the name of all individuals who will require access to classified or protected information, assets or sensitive work sites;
2. Bidders are reminded to obtain the required security clearance promptly. Any delay in the award of a contract to allow the successful Bidder to obtain the required clearance will be at the entire discretion of the Contracting Authority.
3. For additional information on security requirements, Bidders should refer to the Industrial Security Program (ISP) of Public Works and Government Services Canada (<http://ssi-iss.tpsgc-pwgsc.gc.ca/index-eng.html>) website.

1.2 Statement of Work

The Work to be performed is detailed under Article 6.2 of the resulting contract clauses.

1.3 Debriefings

Bidders may request a debriefing on the results of the bid solicitation process. Bidders should make the request to the Contracting Authority within 15 working days from receipt of the results of the bid solicitation process. The debriefing may be in writing, by telephone or in person.

1.4 Trade Agreements

"The requirement is subject to the provisions of the North American Free Trade Agreement (NAFTA), the Canada-Chile Free Trade Agreement (CCFTA), the Canadian Free Trade Agreement (CFTA), the Canada-Columbia Free Trade Agreement (CCoIFTA), the Canada-Panama Free Trade Agreement (CPanFTA), the Canada-Honduras Free Trade Agreement (CHFTA), and the Canada-Korea Free Trade Agreement (CKFTA)."

PART 2 - BIDDER INSTRUCTIONS

2.1 Standard Instructions, Clauses and Conditions

All instructions, clauses and conditions identified in the bid solicitation by number, date and title are set out in the Standard Acquisition Clauses and Conditions Manual (<https://buyandsell.gc.ca/policy-and->

guidelines/standard-acquisition-clauses-and-conditions-manual) issued by Public Works and Government Services Canada.

Bidders who submit a bid agree to be bound by the instructions, clauses and conditions of the bid solicitation and accept the clauses and conditions of the resulting contract.

The 2003 (2017-04-27) Standard Instructions – Goods and Services – Competitive Requirements, are incorporated by reference into and form part of the bid solicitation, with the following modifications:

- a) Section 02, Procurement Business Number is deleted in its entirety.
- b) Section 20, Further Information is deleted in its entirety.

Subsection 5.4 of 2003, Standard Instructions - Goods or Services – Competitive Requirements, is amended as follows:

Delete: 60 days
Insert: 90 days

2.2 Submission of Bids

Bids must be submitted only to Public Works and Government Services Canada (PWGSC) Bid Receiving Unit by the date, time and place indicated on page 1 of the bid solicitation.

2.3 Improvement of Requirement During Solicitation Period

Should bidders consider that the specifications or Statement of Work contained in the bid solicitation could be improved technically or technologically, bidders are invited to make suggestions, in writing, to the Contracting Authority named in the bid solicitation. Bidders must clearly outline the suggested improvement as well as the reason for the suggestion. Suggestions that do not restrict the level of competition nor favour a particular bidder will be given consideration provided they are submitted to the Contracting Authority 30 days following the Mandatory Site Visit on November 13, 2017. Canada will have the right to accept or reject any or all suggestions.

2.4 Enquiries - Bid Solicitation

All enquiries must be submitted in writing to the Contracting Authority no later than 14 calendar days before the bid closing date. Enquiries received after that time may not be answered.

Bidders should reference as accurately as possible the numbered item of the bid solicitation to which the enquiry relates. Care should be taken by Bidders to explain each question in sufficient detail in order to enable Canada to provide an accurate answer. Technical enquiries that are of a proprietary nature must be clearly marked "proprietary" at each relevant item. Items identified as "proprietary" will be treated as such except where Canada determines that the enquiry is not of a proprietary nature. Canada may edit the question(s) or may request that the Bidder do so, so that the proprietary nature of the question(s) is eliminated, and the enquiry can be answered to all Bidders. Enquiries not submitted in a form that can be distributed to all Bidders may not be answered by Canada.

2.5 Applicable Laws

Any resulting contract must be interpreted and governed, and the relations between the parties determined, by the laws in force in Ontario.

Bidders may, at their discretion, substitute the applicable laws of a Canadian province or territory of their choice without affecting the validity of their bid, by deleting the name of the Canadian province or territory specified and inserting the name of the Canadian province or territory of their choice. If no change is made, it acknowledges that the applicable laws specified are acceptable to the Bidders.

2.6 Equipment to be removed

The equipment to be removed is noted in SOW para 3.1.1, as shown in Figures 3-1 and 3-2 and as described in Tables 3-1 and 3-2 is being offered on an as-is, where is basis. The equipment may be viewed during the mandatory site visit indicated in Part 2 - Bidders Instructions, clause 2.7. The trade-in equipment will be immediately available to the selected Contractor upon delivery of the new equipment at destination.

2.7 Mandatory Site Visit

It is mandatory that the Bidder or a representative of the Bidder visit the work site. Arrangements have been made for the site visit to be held at National Printing Building, QETE, 45 Sacré-cœur Blvd., Gatineau, Quebec, on November 13, 2017. The site visit will begin at 9h00 to 11h00 and 12h30 to 14h30 EST, in room C-2119, 2nd floor.

Personnel security screening is required prior to gaining authorized access to PROTECTED information, assets, or sites. Bidders must communicate with the Contracting Authority no later than November 8, 2017 at 14:00 to confirm attendance and provide the name(s) of the person(s) who will attend. The Bidder's Company Security Officer (CSO) must ensure that their representatives hold a valid security clearance at the required level for the site visit. Failure to comply with the security requirements will result in the representative(s) being denied access to the site.

Bidders will be required to sign an attendance sheet. Bidders should confirm in their bid that they have attended the site visit. Bidders who do not attend the mandatory site visit or do not send a representative will not be given an alternative appointment and their bid will be declared non-responsive. Any clarifications or changes to the bid solicitation resulting from the site visit will be included as an amendment to the bid solicitation.

2.8 SACC Manual Clauses

SACC Manual Clause B1000T, (2014-06-26), Condition of Material - Bid

PART 3 - BID PREPARATION INSTRUCTIONS

3.1 Bid Preparation Instructions

Canada requests that Bidders provide their bid in separately bound sections as follows:

Section I: Technical Bid 3 hard copies

Section II: Financial Bid 1 hard copy

Section III: Certifications 3 hard copies

Section IV: Additional Information 3 hard copies

Prices must appear in the financial bid only. No prices must be indicated in any other section of the bid.

Canada requests that Bidders follow the format instructions described below in the preparation of their bid:

- (a) use 8.5 x 11 inch (216 mm x 279 mm) paper;
- (b) use a numbering system that corresponds to the bid solicitation.

In April 2006, Canada issued a policy directing federal departments and agencies to take the necessary steps to incorporate environmental considerations into the procurement process Policy on Green Procurement (<http://www.tpsgc-pwgsc.gc.ca/ecologisation-greening/achats-procurement/politique-policy-eng.html>). To assist Canada in reaching its objectives, Bidders should:

- 1) use 8.5 x 11 inch (216 mm x 279 mm) paper containing fibre certified as originating from a sustainably-managed forest and containing minimum 30% recycled content; and
- 2) use an environmentally-preferable format including black and white printing instead of colour printing, printing double sided/duplex, using staples or clips instead of cerlox, duotangs or binders.

Section I: Technical Bid

In their technical bid, Bidders should explain and demonstrate how they propose to meet the requirements and how they will carry out the Work.

Section II: Financial Bid

Bidders must submit their financial bid as follows:

Bidders must submit firm prices, Delivered Duty Paid (DDP) at 45 Sacré-Coeur, Gatineau, Québec, Canada Incoterms 2010, Applicable Taxes excluded. The total amount of Applicable Taxes must be shown separately.

Bids must be submitted in Canadian dollars.

If Bidders choose to use Attachment 1 to Part 3 to submit their prices, the Bidders must include Attachment 1 to Part 3 as part of their financial bid.

Blank Prices : Bidders are requested to insert "\$0.00" for any item for which it does not intend to charge or for items that are already included in other prices set out in Attachment 1 to Part 3. If the Bidder leaves any price blank, Canada will treat the prices as "\$0.00" for evaluation purposes and may request that the Bidder confirm that the price is, in fact, \$0.00. No bidder will be permitted to add or change a price as part of this confirmation. Any bidder who does not confirm that the price for a blank item is \$0.00 will be declared non-responsive.

3.1.1 Electronic Payment of Invoices – Bid

If you are willing to accept payment of invoices by Electronic Payment Instruments, complete Annex "E" Electronic Payment Instruments, to identify which ones are accepted.

If Annex "E" Electronic Payment Instruments is not completed, it will be considered as if Electronic Payment Instruments are not being accepted for payment of invoices.

Acceptance of Electronic Payment Instruments will not be considered as an evaluation criterion.

3.1.2 Exchange Rate

SACC *Manual* Clause C3011T (2013-11-06), Exchange Rate Fluctuation

Section III: Certifications

3.1.3 Bidders must submit the certifications and additional information required under Part 5.

Section IV: Additional Information

3.1.4 The Company Security Officer (CSO) must ensure through the Industrial Security Program (ISP) that the Contractor and individuals hold a valid security clearance at the required level, as indicated in Part 1, clause 1.1, Security Requirements.

PART 4 - EVALUATION PROCEDURES AND BASIS OF SELECTION

4.1 Evaluation Procedures

- (a) Bids will be assessed in accordance with the entire requirement of the bid solicitation including the technical and financial evaluation criteria.
- (b) An evaluation team composed of representatives of Canada will evaluate the bids.

4.1.1 Mandatory Site Visit

The Bidder must attend the mandatory site visit as per Part 2, 2.7 Mandatory Site Visit

4.1.2 Mandatory Technical Evaluation

The Mandatory Technical Criteria are noted in Annex B - Mandatory Technical Evaluation Criteria.

4.1.3 Financial Evaluation

The price of the bid will be evaluated in Canadian dollars, Delivered Duty Paid (DDP) at DND QETE, 45 Blvd Sacré Coeur, Gatineau, Quebec, J8X 1C6, Incoterms 2010, Canadian customs duties and excise taxes included, Applicable Taxes excluded.

4.1.4 Basis of Selection

A bid must comply with the requirements of the bid solicitation and meet all mandatory technical evaluation criteria to be declared responsive. The responsive bid with the lowest evaluated price as noted in Attachment 1 to Part 3 will be recommended for award of a contract.

PART 5 – CERTIFICATIONS AND ADDITIONAL INFORMATION

5.1 Certifications Precedent to Contract Award and Additional Information

The certifications and additional information listed below should be submitted with the bid, but may be submitted afterwards. If any of these required certifications or additional information is not completed and submitted as requested, the Contracting Authority will inform the Bidder of a time frame within which to provide the information. Failure to provide the certifications or the additional information listed below within the time frame provided will render the bid non-responsive.

5.1.1 Trade Certifications

The Bidder must provide the following certifications:

- 1) Electrician Certifications – for all workers proposed to perform the Work; and,
- 2) Forklift Driver/Operator Certifications for all drivers/operators proposed to perform the Work.
- 3) Original Equipment Manufacturer (OEM) Approved Supplier letter must be provided from the OEM confirming the Contractor is an Approved Supplier.

5.2 Integrity Provisions – Required Documentation

In accordance with the *Ineligibility and Suspension Policy* (<http://www.tpsgc-pwgsc.gc.ca/ci-if/politique-policy-eng.html>), the Bidder must provide the required documentation, as applicable, to be given further consideration in the procurement process.

5.2.1 Federal Contractors Program for Employment Equity - Bid Certification

By submitting a bid, the Bidder certifies that the Bidder, and any of the Bidder's members if the Bidder is a Joint Venture, is not named on the Federal Contractors Program (FCP) for employment equity "FCP Limited Eligibility to Bid" list available at the bottom of the page of the Employment and Social Development Canada (ESDC) - Labour's website (http://www.esdc.gc.ca/en/jobs/workplace/human_rights/employment_equity/federal_contractor_program.page?&_ga=1.229006812.1158694905.1413548969#afed).

Canada will have the right to declare a bid non-responsive if the Bidder, or any member of the Bidder if the Bidder is a Joint Venture, appears on the "FCP Limited Eligibility to Bid" list at the time of contract award.

5.2.2 Insurance - Proof of Availability Prior to Contract Award

The Bidder must provide a letter from an insurance broker or an insurance company licensed to operate in Canada stating that the Bidder, if awarded a contract as a result of the bid solicitation, can be insured in accordance with the Insurance Requirements specified in Annex "F".

If the information is not provided in the bid, the Contracting Authority will so inform the Bidder and provide the Bidder with a time frame within which to meet the requirement. Failure to comply with the request of the Contracting Authority and meet the requirement within that time period will render the bid non-responsive.

PART 6 - RESULTING CONTRACT CLAUSES

The following clauses and conditions apply to and form part of any contract resulting from the bid solicitation.

6.1 Security Requirements

6.1.1 The following security requirements (SRCL and related clauses provided by ISP) apply and form part of the Contract.

1. The Contractor/Offeror must, at all times during the performance of the Contract/Standing Offer, hold a valid Designated Organization Screening (DOS), issued by the Canadian Industrial Security Directorate (CISD), Public Works and Government Services Canada (PWGSC).
2. The Contractor/Offeror personnel requiring access to sensitive work site(s) must EACH hold a valid RELIABILITY STATUS, granted or approved by CISD/PWGSC.
3. Subcontracts which contain security requirements are NOT to be awarded without the prior written permission of CISD/PWGSC.
4. The Contractor/Offeror must comply with the provisions of the:
 - a. Security Requirements Check List and security guide (if applicable), attached at Annex "D";
 - b. Industrial Security Manual (Latest Edition).

6.1.1.2 The Company Security Officer (CSO) must ensure through the Industrial Security Program (ISP) that the Contractor and individuals hold a valid security clearance at the required level of document safeguarding capability.

6.1.1.3 The Contractor must provide the approved Visit Clearance Request (VCR) to P-OTG.DGLEPMDIVOR@intern.mil.ca with the subject line providing the contract reference.

6.2 Statement of Work

The Contractor must perform the Work in accordance with the Statement of Work at Annex "A".

6.3 Standard Clauses and Conditions

All clauses and conditions identified in the Contract by number, date and title are set out in the *Standard Acquisition Clauses and Conditions Manual* (<https://buyandsell.gc.ca/policy-and-guidelines/standard-acquisition-clauses-and-conditions-manual>) issued by Public Works and Government Services Canada.

6.3.1 General Conditions

2010A (2016-04-04), General Conditions - Goods (Medium Complexity) and
2010C (2016-04-04), General Conditions - Services (Medium Complexity), apply to and form part of the Contract, with the following modifications:

a. Definition of Minister is modified as follows:

"Canada", "Crown", "Her Majesty" or "the Government" means Her Majesty the Queen in right of Canada as represented by the Minister of National Defence and any other person duly authorized to act on behalf of that minister or, if applicable, an appropriate minister to whom the Minister of National Defence has delegated his or her powers, duties or functions and any other person duly authorized to act on behalf of that minister.

6.3.2 Supplemental General Conditions

4001 (2015-04-01, Hardware Purchase, Lease and Maintenance and
4003 (2010-08-16), Licensed Software and
4004 (2013-04-25), Maintenance and Support Services for Licensed Software apply to and form part of the Contract.

6.4 Delivery Date

All the deliverables must be received on or before 28 February 2018.

6.4.1 Delivery

Goods must be consigned and delivered to the destination specified in the contract:

1. Incoterms 2010 "DDP Delivered Duty Paid" 45 Sacré-coeur Blvd., Gatineau, Quebec.
2. The Contractor must deliver the goods to the Department of National Defence (DND) Quality Engineering Test Establishment (QETE) by appointment only. The Contractor or its carrier must arrange delivery appointments by contacting the Traffic Section at the location shown below. The consignee may refuse shipments when prior arrangements have not been made.
 - a. DND QETE
45 Sacré-coeur Blvd.
Gatineau, Quebec
Telephone: 819-939-9083

6.5 Authorities

6.5.1 Contracting Authority

The Contracting Authority for the Contract is:

Valerie Bleskie, DLP 7-1-3-1
Department of National Defence
Directorate of Land Procurement
101 Colonel By Drive
Ottawa, ON
K1A 0K2
Telephone: 819-939-6477
Facsimile: 819-994-7659
E-mail address: Valerie.Bleskie@forces.gc.ca

The Contracting Authority is responsible for the management of the Contract and any changes to the Contract must be authorized in writing by the Contracting Authority. The Contractor must not perform work in excess of or outside the scope of the Contract based on verbal or written requests or instructions from anybody other than the Contracting Authority.

6.5.2 Technical Authority

The Technical Authority for the Contract is:

Name: _____
Title: _____
Organization: _____
Address: _____
Telephone: _____
Facsimile: _____
E-mail address: _____

The Technical Authority named above is the representative of the department or agency for whom the Work is being carried out under the Contract and is responsible for all matters concerning the technical content of the Work under the Contract. Technical matters may be discussed with the Technical Authority, however the Technical Authority has no authority to authorize changes to the scope of the Work. Changes to the scope of the Work can only be made through a contract amendment issued by the Contracting Authority.

6.5.3 Contractor's Representative

Name: _____
Title: _____
Organization: _____
Address: _____
Telephone: _____
Facsimile: _____
E-mail address: _____

6.6 Payment

6.6.1 Basis of Payment – Firm Price, Firm Unit Price(s) or Firm Lot Price(s)

In consideration of the Contractor satisfactorily completing all of its obligations under the Contract, the Contractor will be paid firm unit price(s), as specified in the Annex "B" - Pricing for a total cost of \$ _____ (insert the amount at contract award) . Customs duties are included, and Applicable Taxes are extra.

Canada will not pay the Contractor for any design changes, modifications or interpretations of the Work, unless they have been approved, in writing, by the Contracting Authority before their incorporation into the Work.

6.6.1.1 Trade-in Value

The trade - in value of the equipment to be removed is noted in Annex "B" Items 009 and 010. The trade-in value of the equipment to be removed will be applied against the value of the final invoice.

6.6.2 Single Payment

SACC Manual Clause H1000C (2008-05-12), Single Payment

6.6.3 SACC Manual Clauses

SACC Manual Clause C2000C (2007-11-30), Taxes – Foreign-based Contractor

6.6.4 Electronic Payment of Invoices – Contract

The Contractor accepts to be paid using any of the following Electronic Payment Instrument(s):

- a. Direct Deposit (Domestic and International);
- b. Electronic Data Interchange (EDI);
- c. Wire Transfer (International (Only));

6.6.5 Invoicing Instructions

1. The Contractor must submit invoices in accordance with the section entitled "Invoice Submission" of the general conditions. Invoices cannot be submitted until all work identified in the invoice is completed.
2. Invoices must be distributed as follows:

The original must be forwarded to the address shown on page 1 of the Contract for certification and payment.

6.6.6 Equipment to be removed trade-in value

The Equipment to be removed trade-in value as noted in Annex "B" has taken into consideration the fact that the equipment to be removed will be retained for use by QETE until the new equipment is delivered. No adjustment to the trade-in value of the equipment to be removed will be made to allow for depreciation arising out of normal wear and tear on the equipment to be removed between the time of appraisal – determined to be the date of the mandatory site visit - and the date of removal of the equipment to be removed. Once the equipment has been disconnected from the building power supply by the Contractor, there shall be no adjustment to the trade-in value of the equipment to be removed.

Prior to performing any Work in Annex "A", if the Contractor has reason to claim that a change in the condition of the equipment to be removed is beyond what would be considered to be normal wear and tear, the Contractor shall not remove the equipment to be removed. The Contractor will immediately inform the on-site QETE personnel of its decision not to remove the equipment to be removed in writing.

Should the Contractor have a reason to claim a change in the condition of the equipment to be removed is beyond what would be considered to be normal wear and tear, the Contractor agrees that no Work in Annex "A" will be performed until directed by the Contracting Authority.

6.7 Certifications

6.7.1 Compliance

The continuous compliance with the certifications provided by the Contractor in its bid and the ongoing cooperation in providing additional information are conditions of the Contract. Certifications are subject to verification by Canada during the entire period of the Contract. If the Contractor does not comply with any certification, fails to provide the additional information, or if it is determined that any certification made by the Contractor in its bid is untrue, whether made knowingly or unknowingly, Canada has the right, pursuant to the default provision of the Contract, to terminate the Contract for default.

6.8 Applicable Laws

The Contract must be interpreted and governed, and the relations between the parties determined, by the laws in force in _____. (Insert the name of the province or territory as specified by the Bidder in its bid, if applicable)

6.9 Priority of Documents

If there is a discrepancy between the wording of any documents that appear on the list, the wording of the document that first appears on the list has priority over the wording of any document that subsequently appears on the list.

- (a) The Articles of Agreement;
- (b) The supplemental general conditions; 4001 (2015-04-01), Hardware Purchase, Lease and Maintenance;
- (c) The supplemental general conditions; 4003 (2010-08-16), Licensed Software;
- (d) The supplemental general conditions; 4004 (2013-04-25), Maintenance and Support Services for Licensed Software;
- (e) The General Conditions 2010A (2016-04-04), General Conditions - Goods (Medium Complexity);
- (f) The General Conditions 2010C (2016-04-04), General Conditions - Services (Medium Complexity);
- (g) Annex "A", Statement of Work;
- (h) Annex "B", Pricing;
- (i) Annex "C", Security Requirements Check List;
- (j) Annex "D", Commercial General Liability Insurance
- (k) The Contractor's bid dated _____ (insert date of bid)

6.10 Defence Contract

SACC Manual Clause A9006C (2012-07-16), Defence Contract

6.11 SACC Manual Clauses

SACC Manual Clause A9039C, (2008-05-12), Salvage
SACC Manual Clause A9068C, (2010-01-11, Government Site Regulations
SACC Manual Clause B1501C (2006-06-16), Electrical Equipment
SACC Manual Clause B7010C (2008-05-12), Marking and Labelling
SACC Manual Clause B7500C (2006-06-16), Excess Goods
SACC Manual Clause D2000C (2007-11-30), Marking
SACC Manual Clause D2001C (2007-11-30), Labelling
SACC Manual Clause D2025C (2013-11-06), Wood Packaging Materials
SACC Manual Clause D5545C (2010-08-16), ISO 9001:2008 – Quality Management Systems – Requirements (Quality Assurance Code C)
SACC Manual Clause D6010C (2007-11-30), Palletization
SACC Manual Clause D9002C (2007-11-30), Incomplete Assemblies

6.12 Packaging Requirement using Specification D-LM-008-036/SF-000

The Contractor must prepare all items for delivery in accordance with the latest issue of the Canadian Forces Packaging Specification **D-LM-008-036/SF-000**, DND Minimum Requirements for Manufacturer's Standard Pack.

The Contractor must package all items in quantities of 1 per package.

6.13 Inspection and Acceptance

The Technical Authority is the Inspection Authority. All reports, deliverable items, documents, goods and all services rendered under the Contract are subject to inspection by the Inspection Authority or representative. Should any report, document, good or service not be in accordance with the requirements of the Statement of Work and to the satisfaction of the Inspection Authority, as submitted, the Inspection Authority will have the right to reject it or require its correction at the sole expense of the Contractor before recommending payment.

6.14 Condition of Material – Contract

The Contractor must provide material that is new production of current manufacture supplied by the principal manufacturer or its accredited agent. The material must conform to the latest issue of the applicable drawing, specification and part number, as applicable, that was in effect on the bid closing date.

6.15 Lifetime Spares

6.16.1 It shall be a condition of any contract resulting here from that the Contractor undertakes to supply spare parts for the equipment proposed during the life of the equipment.

6.16.2 The life of the equipment is _____ years (*to be filled in only at contract award by the Contract Authority*). Should the Contractor discontinue the manufacture of the equipment being procured during the life expectancy of the equipment, it shall notify Canada sufficiently in advance to permit the purchase of spares for the remaining life of the equipment or, at the discretion of Canada, either make satisfactory arrangements with a third party to establish a continuing source of spares or provide to Canada, at no charge, a non-exclusive royalty free license to manufacture and have manufactured for its own use spare parts, and provide copies of all drawings, technical information, specifications, manufacturing instructions and patterns necessary to manufacture the spares.

ANNEX "A"

STATEMENT OF WORK

1. SCOPE

1.1. Objective

- 1.1.1. The purpose of this Statement of Work (SOW) is to define the technical requirements for two identical milling machines with both computer numerical control (CNC) and manual control capabilities.

1.2. Background

- 1.2.1 The Quality Engineering Test Establishment (QETE) is a field unit within the Canadian Armed Forces (CAF) with the mandate to provide the Department of National Defence (DND) and the CAF with specialized, technology-based test and investigative services required to support engineering decisions throughout all phases of materiel acquisition and support. QETE provides technical advice and consultation, material evaluation, investigation and analysis, calibration and measurement, in the domains of mechanical and materials engineering, applied science, electrical engineering, measurement science and imagery.

1.3. Terminology

AC	Alternating Current
CAD	Computer Aided Design
CAF	Canadian Armed Forces
CAM	Computer Aided Manufacturing
CNC	Computer Numerically Controlled
CSA	Canadian Standards Association
DND	Department of National Defence
FSR	Factory Service Representative
IEC	International Electrotechnical Commission
ISO	International Organization for Standardization
.mm	Millimetres
NPB	National Printing Bureau
QETE	Quality Engineering Test Establishment
RPM	Revolutions Per Minute
SOW	Statement of Work
VAC	Volts Alternating Current

Table 1-1 Acronyms and Abbreviations

2. REFERENCE DOCUMENTS

2.1. The following standards, references and documents apply to this SOW:

- 2.1.1. ISO/IEC 17025:2005 General requirements for the competence of testing and calibration laboratories.
- 2.1.2. Canadian Electrical Code.¹

3. REQUIREMENTS

3.1. Scope of Work

3.1.1. The scope of work involves providing a turnkey operation, including:

- (a) Disconnection and removal of two existing milling machines (identified in Figures 3-1 and 3-2 and in Tables 3-1 and 3-2);
- (b) Delivery, installation, testing and commissioning of two new and identical milling machines with both computer numerical control (CNC) and manual control capabilities;
- (c) Site clean-up and removal and disposal of all packaging and debris; and
- (d) Training for up to six QETE personnel on the new Equipment.

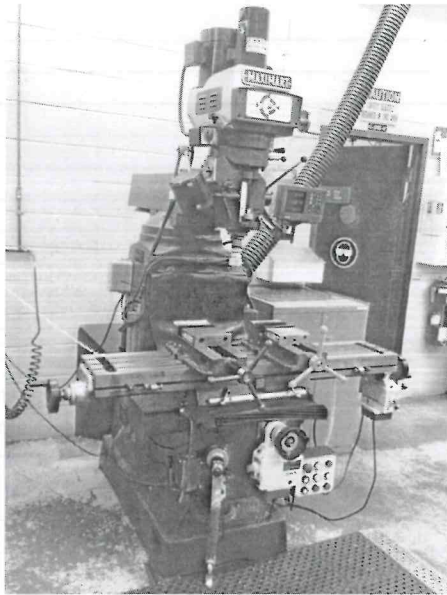


Figure 3-1
Existing MAXIMART 4VS-S
Vertical Turret Milling Machine

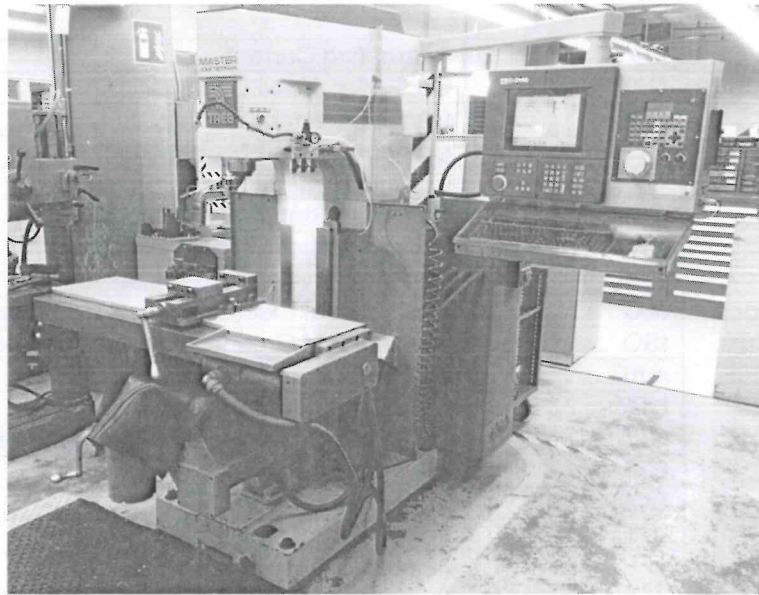


Figure 3-2
Existing Journeyman 425 CNC
Horizontal Milling Machine

¹ <http://www.csagroup.org/services/codes-and-standards/installation-codes/canadian-electrical-code/>

Table 3-1 Existing MAXIMART 4VS-S Vertical Turret Milling Machine	
Model	MAXIMART 4VS-S Vertical Turret Milling Machine
Model No.	4VS-S
Serial Number	991665
Manufacturer	Maximart Corp.
Supplier	Swiss Instruments Ltd.
Date of Installation	March 2000
NATO Stock Number	3417-21-920-8312
Overall Height	2300 mm ² (91 inches)
Overall Depth	1970 mm (78 inches)
Overall Width	1830 mm (72 inches)
Net Weight	1650 kg (3638 pounds)

Table 3-2 Existing Journeyman 425 CNC Horizontal Milling Machine	
Model	Journeyman 425 CNC Horizontal Milling Machine
Model No.	425
Serial Number	9-42-98-1009
Manufacturer	Tree Machine Tool Co. Inc.
Supplier	Swiss Instruments Ltd.
Date of Installation	March 2000
NATO Stock Number	3417-01-480-8595
Overall Height	2184 mm (86 inches)
Overall Depth	1830 mm - doors closed (70 inches) 2743 mm - doors open (108 inches)
Overall Width	1778 mm - doors closed (88 inches) 2743 mm - doors open (108 inches)
Weight	2,722 Kg (6,000 lbs)

- 3.1.2. The Equipment is defined as two (2) identical milling machines with both computer numerical control (CNC) and manual control capabilities.
- 3.1.3. General Requirements:
- 3.1.3.1. The Contractor must provide transport of the old equipment from its current location and load the equipment onto the Contractor's vehicle for disposal, as well as provide transport of new Equipment from the Contractor's delivery vehicle to the installation location.
- 3.1.3.2. All electrical components of the Equipment must be certified or approved for use in accordance with the Canadian Electrical Code, Part 1, before delivery, by a certification organization accredited by the Standards Council of Canada. Accordingly, electrical components of the Equipment must be Canadian Standards Association (CSA) compliant and must include a CSA certification mark applicable to Canada on a sticker on the delivered item(s).
- 3.1.3.3. The Equipment must meet the more stringent of the technical specifications stated in this Statement of Work or the manufacturer's published specifications.
- 3.1.3.4. The Equipment must meet the manufacturer's published specifications for any functional or performance parameter not specified in this Statement of Work.
- 3.1.4. Control System – Each machine must be provided with an ACU-RITE 3-AXIS MILLPWR G2 Control System, installed for the X, Y, and Z axis, including:
- (a) Remote stop/go switch

² All measurements are approximate and are taken from the manufacturers' published specification sheets.

-
- (b) Ball screws
 - (c) Servo drives and motors
 - (d) Motor mounting castings and hardware
 - (e) Handwheels
 - (f) Console and encoder mounting hardware
 - (g) Machine specific bracketry
 - (h) G2 CNC control
 - (i) Knee scale for coupling Z (Quill) and W (Knee) G2
 - (j) Electronic Edge Finder and Touch Probe
 - (k) USB and Ethernet compatible
 - (l) 12.1 inch or larger high resolution LCD display
 - (m) 1.4 GHz or more dual-core processor
 - (n) DXF converter
 - (o) Control System software loaded on the machine.
 - (p) Closed-looped system with positioning feedback by precision linear encoders
 - (q) Linear encoder precision of 1µm/0.00005" resolution
- 3.1.5. Control System offline software must provide the capability of functioning on an offline computer.
- 3.1.6. Software Compatibility – The Equipment must be compatible with the following versions of MasterCAM X8 and X9 software and GibbsCam software:
- (a) MasterCam X8 version 0.26.0.139
 - (b) MasterCam X9 version 18.0.11898.0
 - (c) GibbsCam version 10.3.16 (64 bit)
- 3.1.7. Functional and Performance Requirements – The Equipment must perform the following functions and meet the following parameters:
- (a) The Equipment must be equipped with a CAT 40 spindle taper
 - (b) Construction of the base and column: cast iron
 - (c) Minimum machine net weight: 1,600 kg (3,527 pounds)
 - (d) Machine maximum overall height: 2413mm (95 inches)
 - (e) Machine minimum overall height: 2159mm (85 inches)
 - (f) Machine maximum overall width: 2667 mm (105 inches)
 - (g) Machine minimum overall width: 1473 mm (58 inches)
 - (h) Machine maximum overall depth: 1524 mm (60 inches)
 - (i) Table size maximum width: 1524 mm (60 inches)
 - (j) Table size minimum width: 1219.2 mm (48 inches)
 - (k) Table size maximum depth: 304.8 mm (12 inches)
 - (l) Table size minimum depth: 228.6 mm (9 inches)
 - (m) Table X axis travel maximum: 1016 mm (40 inches)

-
- (n) Table X axis travel minimum: 914.4 mm (36 inches)
 - (o) Table Y axis travel maximum: 635 mm (25 inches)
 - (p) Table Y axis travel minimum: 444.5 mm (17.5 inches)
 - (q) Quill Z axis travel minimum: 127 mm (5 inches)
 - (r) Quill diameter minimum: 100mm (3.937 inches)
 - (s) Quill diameter maximum 125mm (4.921 inches)
 - (t) Quill feed rates: 0.076, 0.038, 0.15mm/Rev
 - (u) Knee travel (W axis) maximum: 635 mm (25 inches)
 - (v) Knee travel (W axis) minimum: 431.8mm (17 inches)
 - (w) Plate of table surface even level X-Z plate - maximum: 0.06mm/m
 - (x) Plate of table surface even level Y-Z plate - maximum: 0.06mm/m
 - (y) Parallelism of the X axis movement to the table top – maximum: 0.02mm/300mm
 - (z) Parallelism of the Y axis movement to the table top – maximum: 0.02mm/300mm
 - (aa) Parallelism of the X axis movement to the table reference T-slot side – maximum: 0.02mm/300mm
 - (ab) Squareness between T-slot & cross movement – maximum: 0.02mm/300mm
 - (ac) Squareness between the Z-axis movement and the table top, X-Z – maximum: 0.02mm/300mm
 - (ad) Squareness between the Z-axis movement and the table top, Y-Z – maximum: 0.02mm/300mm
 - (ae) Squareness between the quill movement & table top, Z-X – maximum: 0.20mm/300/mm
 - (af) Squareness between the quill movement & table top, Y-Z– maximum: 0.20mm/300/mm
 - (ag) Squareness between the table top and the spindle center line, Z-X – maximum: 0.02mm/300mm
 - (ah) Squareness between the table top and the spindle center line, Y-Z – maximum: 0.02mm/300mm
 - (ai) Runout of the spindle taper hole Z measurement distance “A”(just below face of spindle) - maximum: “A”= 0.01mm
 - (aj) Runout of the spindle taper hole Z measurement distance “B” (300mm below measurement location “A”) - maximum: “B”= 0.02mm
 - (ak) Axial runout of spindle – maximum: 0.01mm
 - (al) Radial runout of spindle – maximum: 0.01mm
 - (am) Ram slide parallel with the table top – maximum: 0.02mm/300mm
 - (an) T-slot on table minimum: 3
 - (ao) T-slot size: 5/8 inch
 - (ap) T-slot spacing: 2 ½ inches
 - (aq) Table load capacity minimum: 500 kg (1339 pounds)
 - (ar) Head rotation of 360 degrees

-
- (as) Distance from spindle nose to table top minimum range: 500mm to 45mm (19.685 inches to 1.75 inches)
 - (at) Centreline of spindle to column distance at 90 degrees minimum: 64mm (2.5 inches)
 - (au) Centreline of spindle to column distance at 90 degrees maximum: 690mm (27.165 inches)
 - (av) Spindle minimum speed range: 60 to 4000 RPM
 - (aw) Transmission minimum: Variable with two speed ranges
 - (ax) Spindle speed drive motor maximum rating: minimum 7 horsepower
 - (ay) Lubricant system included
 - (az) Ways must be: Hardened and ground square ways on the X and Y axes
 - (ba) Power feed for longitudinal (X axis)
 - (bb) Power feed for cross (Y axis)
 - (bc) Power feed for quill (Z axis)
 - (bd) Power feed for knee lift (W axis)
 - (be) Power draw bar
- 3.1.8. Accessories – For each machine, the contractor must provide the following accessories necessary to operate the Equipment for its intended design function:
- (a) Chip and coolant pan: Quantity of one (1) pan
 - (b) Halogen or LED work light: Quantity of one (1) work light
 - (c) Machine leveling bolts and pads: Quantity of one (1) set
 - (d) 6 inch angle lock vise: Quantity of four (4) vices, Kurt Model D675
- 3.1.9. Power Requirements:
- 3.1.9.1. Each machine must have its own disconnect box mounted on a nearby wall or column that complies with all applicable codes.
- 3.1.9.2. The existing disconnect box used for the Maximart Milling Machine, as shown in Figure 3-3, may be re-used by the Contractor for the installation of one of the new machines if it is compatible with the power requirements of the new machine. This connection currently provides 575 VAC / 3 Phase / 60 Hz power to the Maximart Milling Machine. If this disconnect box is not used by the Contractor for the installation of the new machine at this location, then the Contractor must remove and dispose of this box and provide a new box that is compatible with the Contractor's machine.
- 3.1.9.3. The existing disconnect box used for the Journeyman Milling Machine may be re-used by the Contractor for the installation of one of the new machines if it is compatible with the power requirements of the new machine. This connection currently provides 575 VAC / 3 Phase / 60 Hz power to the Journeyman Milling Machine through a transformer that converts the power to 230 VAC / 3 Phase / 60 Hz for use by this machine. If this disconnect box is not used by the Contractor for the installation of the new machine at this location, then the Contractor must remove and dispose of this box and provide a new box that is compatible with the Contractor's machine.
- 3.1.9.4. The existing transformer currently used for the Journeyman Milling Machine is hung from the ceiling due to the limited floor space available. If transformers are required for the new machines, then the Contractor must supply and install all necessary transformers in a similar manner as the existing transformer (i.e. to be hung from the ceiling).

- 3.1.9.5. Each machine must have an electrical plug connection that complies with all applicable codes.
- 3.1.9.6. The existing plug connection used for the Journeyman Milling Machine, as shown in Figure 3-4, may be re-used by the Contractor for the installation of one of the new machines, if it is compatible with the power requirements of the new machine. If this plug is not used by the Contractor for the installation of the new machine at this location, then the Contractor must remove and dispose of this plug and provide a new plug that is compatible with the Contractor's machine.
- 3.1.9.7. There is no existing electrical plug connection for the Maximart Milling Machine. The Contractor must provide and install a new electrical plug connection for the new machine to be installed at this location.

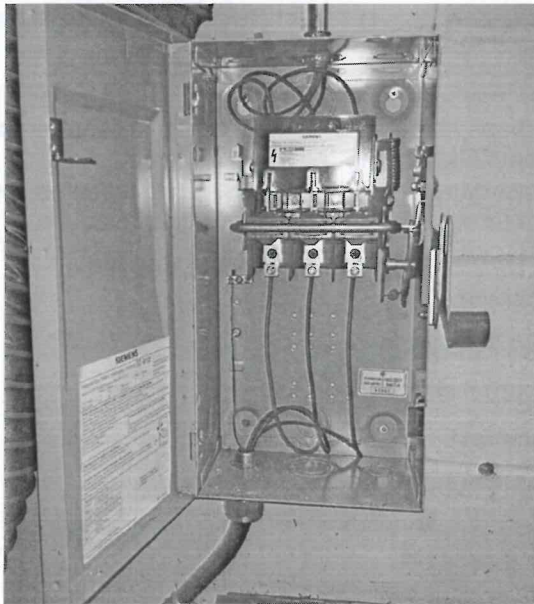


Figure 3-3
Maximart Milling Machine
Electrical Power Source Connection

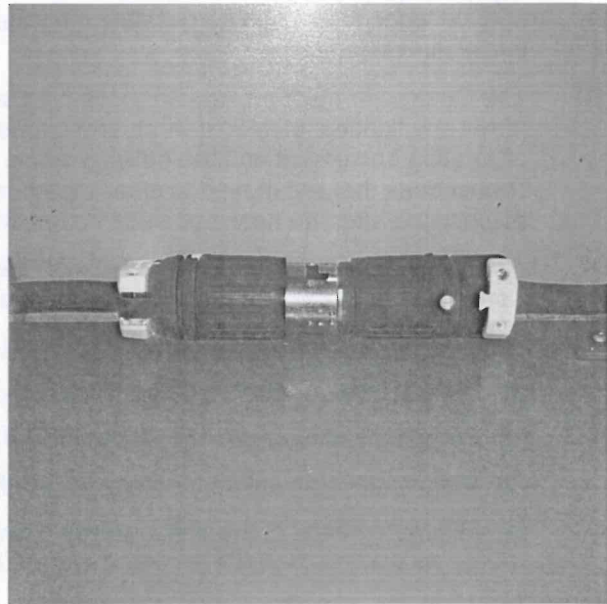


Figure 3-4
Journeyman Milling Machine
Electrical Power Source Connection

3.2. Tasks

3.2.1. Removal of Existing Milling Machines

3.2.1.1. The following equipment must be removed by the Contractor:

- (a) Maximart 4VS-S Vertical Turret Manual Milling Machine, Serial # 991665
- (b) Journeyman 425 3-Axis CNC Horizontal Milling Machine, Serial # 9-42-98-1009

3.2.1.2. The Contractor must decommission, prepare for transport, and remove, the existing milling machines located in QETE's Mechanical Design Workshop located in the National Printing Bureau (NPB) building, 45 Sacré-Coeur Blvd, Gatineau, Québec, in Room C-2119.

3.2.1.3. In the disassembly process, the Contractor must perform all disconnections from the building electrical and air supply.

3.2.1.4. The Contractor must disconnect, remove and dispose of the existing transformer that is used with the Journeyman Milling Machine.

-
- 3.2.1.5. The Contractor must prepare the machines for transport.
- 3.2.1.6. In the removal process, the Contractor must transport the existing milling machines from the second floor Mechanical Design Workshop (MDW) to the NPB shipping dock utilizing the building freight elevator.
- 3.2.1.7. The Contractor must load the existing milling machines onto the Contractor's delivery vehicle.
- 3.2.1.8. A Contractor's authorized Factory Service Representatives (FSRs) must be on site during the removal of existing equipment and delivery of the new equipment.
- 3.2.1.9. The Contractor must provide qualified heavy equipment movers to move adjacent machines, if required, to clear a path for the removal of existing equipment and the delivery of the new Equipment. Any adjacent machines that are moved to clear a path must be returned to their original location as soon as possible after the new machines have been moved to their final installation locations.
- 3.2.1.10. The Contractor must provide an electrician certified to work in the Province of Québec to move any lighting, electrical wires and connections, if required, to clear a path for the removal of existing equipment and the delivery of the new Equipment. Any lighting, electrical wires or connections that are moved to clear a path must be returned to their original location as soon as possible after the new machines have been moved to their final installation locations.
- 3.2.1.11. The following dimensions associated with the NPB building are provided to assist the Contractor with planning the transport of equipment:
- (a) Freight elevator door width: 224.79 cm (88.5 inches)
 - (b) Freight elevator door height: 306.07 cm (120.5 inches)
 - (c) Freight elevator depth 431.80 cm (170.0 inches)
 - (d) Freight elevator weight capacity: 5,443 kg (12,000 lbs)
 - (e) Minimum height of the passageway from the current machine locations to the corridor outside of the MDW : 152.4 cm (60 inches)
- 3.2.1.12. The Contractor must dispose of all debris resulting from the disassembly and removal of the existing milling machines.
- 3.2.2. Installation and Commissioning
- 3.2.2.1. The Contractor must install the Equipment in QETE's facilities at the National Printing Bureau building in Room 2-C119 (second floor) at 45 Sacré-Coeur Blvd, Gatineau, Québec in the Mechanical Design Workshop.
- 3.2.2.2. The Equipment must be transported by the Contractor from the Contractor's delivery vehicle from the NPB loading dock to the Mechanical Design Workshop located on the second floor utilizing the building freight elevator. The same dimensions provided above for the removal of the old equipment apply for the transport of the new Equipment to their installation locations.
- 3.2.2.3. All cables associated with the Equipment must be connected and retained using fasteners or other means to ensure mechanical and electrical integrity of the connection while allowing ease of disconnection for servicing.
- 3.2.2.4. In the installation process, the Contractor must make and test all connections to the building electrical and air supplies.
- 3.2.2.5. The Contractor must perform all actions needed to commission the Equipment for operational use by QETE staff. Commissioning includes conducting all visual inspections, calibration, system checks, tests and any other activities specified by the manufacturer's standard operating procedures for commissioning new equipment to ensure that the Equipment will function in accordance with the requirements of this SOW as well as the manufacturer's specifications.

-
- 3.2.2.6. The installation, levelling, securing, initial start-up, and calibration of Equipment must be performed by the Contractor's authorized Factory Service Representatives (FSRs).
- 3.2.2.7. The Contractor must supply all tools and supplies needed by the Contractor's FSRs to complete the installation.
- 3.2.2.8. The Contractor must dispose of all packaging used in the transport of the Equipment to the installation location and all debris resulting from the installation.
- 3.2.3. Training
- 3.2.3.1. The Contractor must provide on-site training in English on the proper operation and maintenance of the Equipment for up to six personnel who are proficient in the operation of the existing machines.
- 3.2.3.2. The Contractor must provide paper and electronic copies, in English, of all training materials provided and presented to the personnel who receive the training.
- 3.2.3.3. Training will consist of a hands-on tutorial, which must include, at a minimum, the following topics:
- (a) Equipment Start-up
 - (b) Equipment Shut-down
 - (c) Equipment Orientation
 - (d) Equipment Safety
 - (e) Operation
 - (f) Programming
 - (g) Maintenance
- 3.2.3.4. The hands-on tutorial will be conducted:
- (a) using the delivered Equipment after installation, testing and commissioning has been successfully completed by the Contractor;
 - (b) using QETE supplied test scenarios;
- 3.2.3.5. The Contractor must provide a Training Summary Report that identifies all students who participated in the training, the date(s) and location(s) of the training, and the instructor(s).
- 3.2.3.6. The Contractor must provide a Training Certificate for each student that identifies the student's name and organization, the training activity, the date(s) and location(s) of the training, the approved training organization's name, logo, and authorized signature.
- 3.2.4. Service Support
- 3.2.4.1. Availability – The Contractor must:
- (a) certify that full service support and replacement parts are available for a period of 15 years following the date of delivery of the Equipment; and
 - (b) without limiting the generality of Section 3.2.4.1.(a), provide Canada with a one year written notification prior to the Equipment parts no longer being available, and failing such notification, the Contractor must provide Canada sufficient notice to ensure that Canada may purchase the parts that are no longer available.
- 3.2.4.2. Service Desk – A support service desk function must be provided to help Canada in answering questions with respect to the Equipment that includes, at a minimum:
- (a) telephone technical support between the hours of 08:00 and 17:00 (Eastern Time), Monday to Friday, excluding public holidays;

-
- (b) e-mail technical support with a response within 48 hours excluding weekends and public holidays; and
 - (c) on-line help resources, including contact information, product information and documentation downloads (e.g. product brochures, technical manuals).
- 3.2.4.3. Product Notifications – Canada must be advised in writing as soon as reasonably possible in the event of:
- (a) any safety-related product recalls or advisories, component defects, and other similar events;
 - (b) any security vulnerabilities that are subsequently discovered; and
 - (c) any hidden or previously unknown defects that are subsequently discovered that may adversely affect product performance and/or functionality.
- 3.2.4.4. Software Support Period – The Contractor must provide Maintenance Releases for a period of 15 years from the Contract Award date.
- 3.2.4.5. Equipment Certifications
- (a) Inspection Reports – The Contractor must provide an Inspection Report for each machine, signed by an authorized representative of the manufacturer that provides the specific performance measurements demonstrating that they are within the approved tolerances for the machine as installed. This report may be in a Contractor-defined format. The parameters to be measured must be provided and approved by the Technical Authority prior to the delivery of the machine.
 - (b) Certificate of Conformance – The Contractor must provide a Certificate of Conformance (commonly referred to as an Inspection Report) to attest that the delivered Equipment has been manufactured according to the Contractor's published specifications and has been verified to function as designed. The Certificate must identify the location and date of completion of manufacturing and must be signed by an authorized representative of the manufacturer.
 - (c) Statement of Compliance – The Contractor must provide a Statement of Compliance to attest that the delivered equipment meets the requirements of the Contract. The Statement of Compliance may be provided within the Certificate of Conformance or as a separate document.
 - (d) Statement of Continued Production and Support – The Contractor must provide a Statement of Continued Production and Support to attest that the equipment is neither manufacturer-discontinued nor is there an intent to discontinue the manufacturing of the Equipment within two (2) years. The Statement must also attest that the Contractor will continue to provide technical support and spare parts supply for a minimum of 15 years following delivery of the Equipment.
- 3.2.4.6. Equipment Documentation – The Contractor must provide the following documentation in support of the delivered Equipment
- (a) Machine User and Maintenance Manual – provides detailed information about the functionality and operation of the Equipment and the care and maintenance of the Equipment that is normally performed by the user.
 - (b) ACU-RITE 3-AXIS MILLPWR G2 Control System User and Programming Manual.
- 3.3. Constraints
- 3.3.1. The Contractor must perform all on-site work to deliver, install, test, and commission the Equipment and to train QETE personnel during normal business hours for the Manufacturing Design Workshop (Monday to Friday, 07:00 to 16:00).

3.4. Support Provided by Canada

3.4.1. Canada will provide the Contractor with:

- (a) Access to the job site;
- (b) Access to electric power and air line hookups; and
- (c) On-site parking at the Contractor's expense.

3.5. Time Frame and Delivery Dates

3.5.1. Equipment delivery – six (6) weeks after contract award.

3.5.2. Equipment documentation – at the time of Equipment delivery.

3.5.3. Certifications and Inspection Reports – at the time of Equipment delivery.

3.5.4. Installation and commissioning of Equipment – within two (2) weeks of Equipment delivery at a mutually agreeable date to be coordinated with the Technical Authority.

3.5.5. Training – within five (5) days of Equipment commissioning and to be coordinated with the Technical Authority when planning for the installation of the Equipment.

3.5.6. The following services must be completed within a two-week period:

- (a) De-commissioning and Removal Services;
- (b) Installation and Commissioning Services; and
- (c) Training Services.

3.6. Contractor Qualifications

3.6.1. The Contractor must be an approved supplier of the Original Equipment Manufacturer. If the Contractor is not the OEM, then the Contractor must provide a letter from the OEM confirming that the Contractor is an approved supplier.

3.6.2. Personnel delivering training must be factory-trained representatives or must be approved as qualified trainers or by the Original Equipment Manufacturer.

4. DELIVERABLES

4.1. Equipment – The Contractor must provide the following Equipment deliverables:

4.1.1. Manual Milling Machine: Quantity of two (2)

4.1.2. Control System offline software for five (5) computers

4.1.3. Accessories: For each machine:

- (a) Chip and coolant pan: Quantity of one (1) pan
- (b) Halogen or LED work light: Quantity of one (1) work light
- (c) Machine leveling bolts and pads: Quantity of one (1) set
- (d) 6 inch angle lock vise: Quantity of four (4) vices, Kurt Model D675

4.2. Services – The Contractor must provide the following service deliverables:

4.2.1. De-commissioning and Removal Services

4.2.2. Installation and Commissioning Services

4.2.3. Training Services

4.2.4. Software Support Services

-
- 4.3. Documentation – The Contractor must provide the following documents to the Technical Authority:
- 4.3.1. Inspection Report: Quantity of one (1) for each Manual Milling Machine
 - 4.3.2. Certificate of Calibration: Quantity of one (1) for each Manual Milling Machine
 - 4.3.3. Statement of Compliance: Quantity of one (1)
 - 4.3.4. Statement of Continued Production and Support : Quantity of one (1)
 - 4.3.5. Machine User and Maintenance Manual: Quantity of one (1)
 - 4.3.6. ACU-RITE 3-AXIS MILLPWR G2 Control System User and Programming Manual: Quantity of one (1)
 - 4.3.7. Training Material: Quantity of one (1) per student
 - 4.3.8. Letter from the OEM confirming that the Contractor is an approved supplier, if the Contractor is not the OEM.
- 4.4. Format for Documentation
- 4.4.1. Equipment documentation and reports may be provided in Contractor format.
 - 4.4.2. Unless otherwise specified, certificates and compliance statements may be provided in Contractor format.
 - 4.4.3. Electronic copies of deliverable documents must be delivered on CD/DVD media or by e-mail to the Technical Authority.
 - 4.4.4. Document files provided in electronic format must provide users with the capability to search documents (e.g. keyword search).
 - 4.4.5. Unless otherwise specified, document files must be provided in PDF format.

ANNEX "B"

MANDATORY TECHNICAL EVALUATION CRITERIA

Manual Milling Machines

1. General Instructions

The Bid must meet the mandatory technical criteria specified below. Bidders must provide the necessary documentation to support compliance with the requirements, including technical data sheets, specifications, brochures and/or other relevant technical documentation describing the equipment offered and demonstrating compliancy. Each mandatory technical criterion should be addressed separately and in the order presented below.

2. Mandatory Technical Criteria

No.	Mandatory Technical Criteria	Supporting Evidence Required
M1	<p>Bidders must propose equipment that must not be a prototype or test unit, but standard proven equipment of the manufacturer and contains reliable state-of-the-art technology. In order to demonstrate this requirement, Bidders must provide with their bid, a list of at least three (3) valid projects identifying customers who have recently purchased the equipment. For a project to be considered valid, it is necessary that the equipment specified in the project:</p> <p>a) be a similar product (i.e. meets all technical specifications described in Section 3.1 of the Statement of Work);</p> <p>and</p> <p>b) was sold in the previous 24 months of the Solicitation closing date.</p>	<p>Bidders must submit with their bid, the following information for each project:</p> <p>a) the brand name and model of the equipment sold;</p> <p>b) the date of sale;</p> <p>c) technical details of the equipment sold;</p> <p>d) a description of how the equipment sold meets the requirements of Criterion M1; and</p> <p>e) customer contact information, which should include organization name, organization address, contact name, contact telephone number, and contact e-mail address.</p> <p>The provided information may be verified with the Bidder's customer to confirm its accuracy. If the information verification does not match the requirements, then the Bid may be declared non responsive.</p>
M2	<p>The Original Equipment Manufacturer (OEM) must have been actively designing, manufacturing and providing technical support for milling machines with both computer numerical control and manual control capabilities for the past five (5) years (as of the solicitation closing date).</p>	<p>Bidders must describe the prior experience of the OEM and how it meets this requirement, including the identification of the number of OEM-designed units of milling machines with both computer numerical control and manual control capabilities manufactured by the OEM in each year of the past five (5) years. If the total number of units manufactured per year is considered proprietary, then Bidders must indicate that a minimum of two (2) units have been manufactured in each year for the past five (5) years.</p>

No.	Mandatory Technical Criteria	Supporting Evidence Required
M3	Bidders must provide supporting evidence in their proposal to demonstrate that their proposed solution meets the mandatory requirements specified in the Mandatory Requirements Compliancy Matrix.	Bidders should complete the Mandatory Requirements Compliancy Matrix.

3. Mandatory Requirements Compliancy Matrix

Where *Provide Proposal Reference or Description* is indicated for the Bidder's response, Bidders must either provide a reference to their technical proposal where information can be found that clearly shows how the requirement is met by the proposed solution, or provide a description of how the requirement is met. **Where the Bidder's technical documentation does not clearly demonstrate that the equipment offered will meet a specific requirement, the Bidder's proposal must provide additional descriptions of how the requirement will be met by the proposed solution.**

Where *Provide Statement of Compliance* is indicated for the Bidder's response, Bidders must commit to complying with the requirement during the performance of the work. Bidders may indicate "Yes" in the Compliant column, which will be a commitment to comply, or they may provide a statement committing to comply.

MANDATORY REQUIREMENTS COMPLIANCY MATRIX				
SOW Para. #	MANDATORY REQUIREMENT	COMPLIANT		RESPONSE REQUIREMENT
		Yes	No	
3.	REQUIREMENTS			
3.1.	Scope of Work			
3.1.1.	The scope of work involves providing a turnkey operation, including: (a) Disconnection and removal of two existing milling machines (identified in Figures 3-1 and 3-2 and in Tables 3-1 and 3-2); (b) Delivery, installation, testing and commissioning of two new and identical milling machines with both computer numerical control (CNC) and manual control capabilities; (c) Site clean-up and removal and disposal of all packaging and debris; and (d) Training for up to six QETE personnel on the new Equipment.	<input type="checkbox"/>	<input type="checkbox"/>	<i>Provide Statement of Compliance.</i>
3.1.2.	The Equipment is defined as two (2) identical milling machines with both computer numerical control (CNC) and manual control capabilities.	<input type="checkbox"/>	<input type="checkbox"/>	<i>Provide Statement of Compliance</i>
3.1.3.	General Requirements:			
3.1.3.1.	The Contractor must provide transport of the old equipment from its current location and load the equipment onto the Contractor's vehicle for disposal, as well as provide transport of new Equipment from the Contractor's delivery vehicle to the installation location.	<input type="checkbox"/>	<input type="checkbox"/>	<i>Provide Statement of Compliance</i>
3.1.3.2.	All electrical components of the Equipment must be certified or approved for use in accordance with the Canadian Electrical Code, Part 1, before delivery, by a certification organization accredited by the Standards Council of Canada. Accordingly, electrical components of the Equipment must be Canadian Standards Association (CSA) compliant and must include a CSA certification mark applicable to Canada on a sticker on the delivered item(s).	<input type="checkbox"/>	<input type="checkbox"/>	<i>Provide Statement of Compliance</i>

MANDATORY REQUIREMENTS COMPLIANCY MATRIX				
SOW Para. #	MANDATORY REQUIREMENT	COMPLIANT		RESPONSE REQUIREMENT
		Yes	No	
3.1.3.3.	The Equipment must meet the more stringent of the technical specifications stated in this Statement of Work or the manufacturer's published specifications.	<input type="checkbox"/>	<input type="checkbox"/>	<i>Provide Statement of Compliance</i>
3.1.3.4.	The Equipment must meet the manufacturer's published specifications for any functional or performance parameter not specified in this Statement of Work.	<input type="checkbox"/>	<input type="checkbox"/>	<i>Provide Statement of Compliance</i>
3.1.4.	Control System – Each machine must be provided with an ACU-RITE 3-AXIS MILLPWR G2 Control System, installed for the X, Y, and Z axis, including:	<input type="checkbox"/>	<input type="checkbox"/>	<i>Provide Proposal Reference or Description</i>
(a)	Remote stop/go switch	<input type="checkbox"/>	<input type="checkbox"/>	<i>Provide Proposal Reference or Description</i>
(b)	Ball screws	<input type="checkbox"/>	<input type="checkbox"/>	<i>Provide Proposal Reference or Description</i>
(c)	Servo drives and motors	<input type="checkbox"/>	<input type="checkbox"/>	<i>Provide Proposal Reference or Description</i>
(d)	Motor mounting castings and hardware	<input type="checkbox"/>	<input type="checkbox"/>	<i>Provide Proposal Reference or Description</i>
(e)	Handwheels	<input type="checkbox"/>	<input type="checkbox"/>	<i>Provide Proposal Reference or Description</i>
(f)	Console and encoder mounting hardware	<input type="checkbox"/>	<input type="checkbox"/>	<i>Provide Proposal Reference or Description</i>
(g)	Machine specific bracketry	<input type="checkbox"/>	<input type="checkbox"/>	<i>Provide Proposal Reference or Description</i>
(h)	G2 CNC control	<input type="checkbox"/>	<input type="checkbox"/>	<i>Provide Proposal Reference or Description</i>
(i)	Knee scale for coupling Z (Quill) and W (Knee) G2	<input type="checkbox"/>	<input type="checkbox"/>	<i>Provide Proposal Reference or Description</i>
(j)	Electronic Edge Finder and Touch Probe	<input type="checkbox"/>	<input type="checkbox"/>	<i>Provide Proposal Reference or Description</i>
(k)	USB and Ethernet compatible	<input type="checkbox"/>	<input type="checkbox"/>	<i>Provide Proposal Reference or Description</i>
(l)	12.1 inch or larger high resolution LCD display	<input type="checkbox"/>	<input type="checkbox"/>	<i>Provide Proposal Reference or Description</i>
(m)	1.4 GHz or more dual-core processor	<input type="checkbox"/>	<input type="checkbox"/>	<i>Provide Proposal Reference or Description</i>
(n)	DXF converter	<input type="checkbox"/>	<input type="checkbox"/>	<i>Provide Proposal Reference or Description</i>
(o)	Control System software loaded on the machine	<input type="checkbox"/>	<input type="checkbox"/>	<i>Provide Proposal Reference or Description</i>
(p)	Closed-looped system with positioning feedback by precision linear encoders	<input type="checkbox"/>	<input type="checkbox"/>	<i>Provide Proposal Reference or Description</i>
(q)	Linear encoder precision of 1µm/0.00005" resolution	<input type="checkbox"/>	<input type="checkbox"/>	<i>Provide Proposal Reference or Description</i>

MANDATORY REQUIREMENTS COMPLIANCY MATRIX				
SOW Para. #	MANDATORY REQUIREMENT	COMPLIANT		RESPONSE REQUIREMENT
		Yes	No	
3.1.5.	Control System offline software must provide the capability of functioning on an offline computer.	<input type="checkbox"/>	<input type="checkbox"/>	<i>Provide Proposal Reference or Description</i>
3.1.6.	Software Compatibility – The Equipment must be compatible with the following versions of MasterCAM X8 and X9 software, and GibbsCam software:			
(a)	MasterCam X8 version 0.26.0.139	<input type="checkbox"/>	<input type="checkbox"/>	<i>Provide Proposal Reference or Description</i>
(b)	MasterCam X9 version 18.0.11898.0	<input type="checkbox"/>	<input type="checkbox"/>	<i>Provide Proposal Reference or Description</i>
(c)	GibbsCam version 10.3.16 (64 bit)	<input type="checkbox"/>	<input type="checkbox"/>	<i>Provide Proposal Reference or Description</i>
3.1.7.	Functional and Performance Requirements – The Equipment must perform the following functions and meet the following parameters:			
(a)	The Equipment must be equipped with a CAT 40 spindle taper	<input type="checkbox"/>	<input type="checkbox"/>	<i>Provide Proposal Reference or Description</i>
(b)	Construction of the base and column: cast iron	<input type="checkbox"/>	<input type="checkbox"/>	<i>Provide Proposal Reference or Description</i>
(c)	Minimum machine net weight: 1,600 kg (3,527 pounds)	<input type="checkbox"/>	<input type="checkbox"/>	<i>Provide Proposal Reference or Description</i>
(d)	Machine maximum overall height: 2413mm (95 inches)	<input type="checkbox"/>	<input type="checkbox"/>	<i>Provide Proposal Reference or Description</i>
(e)	Machine minimum overall height: 2159mm (85 inches)	<input type="checkbox"/>	<input type="checkbox"/>	<i>Provide Proposal Reference or Description</i>
(f)	Machine maximum overall width: 2667 mm (105 inches)	<input type="checkbox"/>	<input type="checkbox"/>	<i>Provide Proposal Reference or Description</i>
(g)	Machine minimum overall width: 1473 mm (58 inches)	<input type="checkbox"/>	<input type="checkbox"/>	<i>Provide Proposal Reference or Description</i>
(h)	Machine maximum overall depth: 1524 mm (60 inches)	<input type="checkbox"/>	<input type="checkbox"/>	<i>Provide Proposal Reference or Description</i>
(i)	Table size maximum width: 1524 mm (60 inches)	<input type="checkbox"/>	<input type="checkbox"/>	<i>Provide Proposal Reference or Description</i>
(j)	Table size minimum width: 1219.2 mm (48 inches)	<input type="checkbox"/>	<input type="checkbox"/>	<i>Provide Proposal Reference or Description</i>
(k)	Table size maximum depth: 304.8 mm (12 inches)	<input type="checkbox"/>	<input type="checkbox"/>	<i>Provide Proposal Reference or Description</i>
(l)	Table size minimum depth: 228.6 mm (9 inches)	<input type="checkbox"/>	<input type="checkbox"/>	<i>Provide Proposal Reference or Description</i>
(m)	Table X axis travel maximum: 1016 mm (40 inches)	<input type="checkbox"/>	<input type="checkbox"/>	<i>Provide Proposal Reference or Description</i>
(n)	Table X axis travel minimum: 914.4 mm (36 inches)	<input type="checkbox"/>	<input type="checkbox"/>	<i>Provide Proposal Reference or Description</i>
(o)	Table Y axis travel maximum: 635 mm (25 inches)	<input type="checkbox"/>	<input type="checkbox"/>	<i>Provide Proposal Reference or Description</i>
(p)	Table Y axis travel minimum: 444.5 mm (17.5 inches)	<input type="checkbox"/>	<input type="checkbox"/>	<i>Provide Proposal Reference or Description</i>

MANDATORY REQUIREMENTS COMPLIANCY MATRIX				
SOW Para. #	MANDATORY REQUIREMENT	COMPLIANT		RESPONSE REQUIREMENT
		Yes	No	
(q)	Quill Z axis travel minimum: 127 mm (5 inches)	<input type="checkbox"/>	<input type="checkbox"/>	<i>Provide Proposal Reference or Description</i>
(r)	Quill diameter minimum: 100mm (3.937 inches)	<input type="checkbox"/>	<input type="checkbox"/>	<i>Provide Proposal Reference or Description</i>
(s)	Quill diameter maximum 125mm (4.921 inches)	<input type="checkbox"/>	<input type="checkbox"/>	<i>Provide Proposal Reference or Description</i>
(t)	Quill feed rates: 0.076, 0.038, 0.15mm/Rev	<input type="checkbox"/>	<input type="checkbox"/>	<i>Provide Proposal Reference or Description</i>
(u)	Knee travel (W axis) maximum: 635 mm (25 inches)	<input type="checkbox"/>	<input type="checkbox"/>	<i>Provide Proposal Reference or Description</i>
(v)	Knee travel (W axis) minimum: 431.8mm (17 inches)	<input type="checkbox"/>	<input type="checkbox"/>	<i>Provide Proposal Reference or Description</i>
(w)	Plate of table surface even level X-Z plate - maximum: 0.06mm/m	<input type="checkbox"/>	<input type="checkbox"/>	<i>Provide Proposal Reference or Description</i>
(x)	Plate of table surface even level Y-Z plate - maximum: 0.06mm/m	<input type="checkbox"/>	<input type="checkbox"/>	<i>Provide Proposal Reference or Description</i>
(y)	Parallelism of the X axis movement to the table top – maximum: 0.02mm/300mm	<input type="checkbox"/>	<input type="checkbox"/>	<i>Provide Proposal Reference or Description</i>
(z)	Parallelism of the Y axis movement to the table top – maximum: 0.02mm/300mm	<input type="checkbox"/>	<input type="checkbox"/>	<i>Provide Proposal Reference or Description</i>
(aa)	Parallelism of the X axis movement to the table reference T-slot side – maximum: 0.02mm/300mm	<input type="checkbox"/>	<input type="checkbox"/>	<i>Provide Proposal Reference or Description</i>
(ab)	Squareness between T-slot & cross movement – maximum: 0.02mm/300mm	<input type="checkbox"/>	<input type="checkbox"/>	<i>Provide Proposal Reference or Description</i>
(ac)	Squareness between the Z-axis movement and the table top, X-Z – maximum: 0.02mm/300mm	<input type="checkbox"/>	<input type="checkbox"/>	<i>Provide Proposal Reference or Description</i>
(ad)	Squareness between the Z-axis movement and the table top, Y-Z – maximum: 0.02mm/300mm	<input type="checkbox"/>	<input type="checkbox"/>	<i>Provide Proposal Reference or Description</i>
(ae)	Squareness between the quill movement & table top, Z-X – maximum: 0.20mm/300/mm	<input type="checkbox"/>	<input type="checkbox"/>	<i>Provide Proposal Reference or Description</i>
(af)	Squareness between the quill movement & table top, Y-Z– maximum: 0.20mm/300/mm	<input type="checkbox"/>	<input type="checkbox"/>	<i>Provide Proposal Reference or Description</i>
(ag)	Squareness between the table top and the spindle center line, Z-X – maximum: 0.02mm/300mm	<input type="checkbox"/>	<input type="checkbox"/>	<i>Provide Proposal Reference or Description</i>
(ah)	Squareness between the table top and the spindle center line, Y-Z – maximum: 0.02mm/300mm	<input type="checkbox"/>	<input type="checkbox"/>	<i>Provide Proposal Reference or Description</i>
(ai)	Runout of the spindle taper hole Z measurement distance “A”(just below face of spindle) - maximum: “A”= 0.01mm	<input type="checkbox"/>	<input type="checkbox"/>	<i>Provide Proposal Reference or Description</i>

MANDATORY REQUIREMENTS COMPLIANCY MATRIX				
SOW Para. #	MANDATORY REQUIREMENT	COMPLIANT		RESPONSE REQUIREMENT
		Yes	No	
(aj)	Runout of the spindle taper hole Z measurement distance "B" (300mm below measurement location "A") - maximum: "B"= 0.02mm	<input type="checkbox"/>	<input type="checkbox"/>	<i>Provide Proposal Reference or Description</i>
(ak)	Axial runout of spindle – maximum: 0.01mm	<input type="checkbox"/>	<input type="checkbox"/>	<i>Provide Proposal Reference or Description</i>
(al)	Radial runout of spindle – maximum: 0.01mm	<input type="checkbox"/>	<input type="checkbox"/>	<i>Provide Proposal Reference or Description</i>
(am)	Ram slide parallel with the table top – maximum: 0.02mm/300mm	<input type="checkbox"/>	<input type="checkbox"/>	<i>Provide Proposal Reference or Description</i>
(an)	T-slot on table minimum: 3	<input type="checkbox"/>	<input type="checkbox"/>	<i>Provide Proposal Reference or Description</i>
(ao)	T-slot size: 5/8 inch	<input type="checkbox"/>	<input type="checkbox"/>	<i>Provide Proposal Reference or Description</i>
(ap)	T-slot spacing: 2 ½ inches	<input type="checkbox"/>	<input type="checkbox"/>	<i>Provide Proposal Reference or Description</i>
(aq)	Table load capacity minimum: 500 kg (1339 pounds)	<input type="checkbox"/>	<input type="checkbox"/>	<i>Provide Proposal Reference or Description</i>
(ar)	Head rotation of 360 degrees	<input type="checkbox"/>	<input type="checkbox"/>	<i>Provide Proposal Reference or Description</i>
(as)	Distance from spindle nose to table top minimum range: 500mm to 45mm (19.685 inches to 1.75 inches)	<input type="checkbox"/>	<input type="checkbox"/>	<i>Provide Proposal Reference or Description</i>
(at)	Centreline of spindle to column distance at 90 degrees minimum: 64mm (2.5 inches)	<input type="checkbox"/>	<input type="checkbox"/>	<i>Provide Proposal Reference or Description</i>
(au)	Centreline of spindle to column distance at 90 degrees maximum: 690mm (27.165 inches)	<input type="checkbox"/>	<input type="checkbox"/>	<i>Provide Proposal Reference or Description</i>
(av)	Spindle minimum speed range: 60 to 4000 RPM	<input type="checkbox"/>	<input type="checkbox"/>	<i>Provide Proposal Reference or Description</i>
(aw)	Transmission minimum: Variable with two speed ranges	<input type="checkbox"/>	<input type="checkbox"/>	<i>Provide Proposal Reference or Description</i>
(ax)	Spindle speed drive motor maximum rating: minimum 7 horsepower	<input type="checkbox"/>	<input type="checkbox"/>	<i>Provide Proposal Reference or Description</i>
(ay)	Lubricant system included	<input type="checkbox"/>	<input type="checkbox"/>	<i>Provide Proposal Reference or Description</i>
(az)	Ways must be: Hardened and ground square ways on the X and Y axes	<input type="checkbox"/>	<input type="checkbox"/>	<i>Provide Proposal Reference or Description</i>
(ba)	Power feed for longitudinal (X axis)	<input type="checkbox"/>	<input type="checkbox"/>	<i>Provide Proposal Reference or Description</i>
(bb)	Power feed for cross (Y axis)	<input type="checkbox"/>	<input type="checkbox"/>	<i>Provide Proposal Reference or Description</i>
(bc)	Power feed for quill (Z axis)	<input type="checkbox"/>	<input type="checkbox"/>	<i>Provide Proposal Reference or Description</i>
(bd)	Power feed for knee lift (W axis)	<input type="checkbox"/>	<input type="checkbox"/>	<i>Provide Proposal Reference or Description</i>
(be)	Power draw bar	<input type="checkbox"/>	<input type="checkbox"/>	<i>Provide Proposal Reference or Description</i>

MANDATORY REQUIREMENTS COMPLIANCY MATRIX				
SOW Para. #	MANDATORY REQUIREMENT	COMPLIANT		RESPONSE REQUIREMENT
		Yes	No	
3.1.8.	Accessories – For each machine, the contractor must provide the following accessories necessary to operate the Equipment for its intended design function:			
(a)	Chip and coolant pan: Quantity of one (1) pan	<input type="checkbox"/>	<input type="checkbox"/>	<i>Provide Proposal Reference or Description</i>
(b)	Halogen or LED work light: Quantity of one (1) work light	<input type="checkbox"/>	<input type="checkbox"/>	<i>Provide Proposal Reference or Description</i>
(c)	Machine leveling bolts and pads: Quantity of one (1) set	<input type="checkbox"/>	<input type="checkbox"/>	<i>Provide Proposal Reference or Description</i>
(d)	6 inch angle lock vise: Quantity of four (4) vices, Kurt Model D675	<input type="checkbox"/>	<input type="checkbox"/>	<i>Provide Proposal Reference or Description</i>
3.1.9.	Power Requirements:			
3.1.9.1.	Each machine must have its own disconnect box mounted on a nearby wall or column that complies with all applicable codes.	<input type="checkbox"/>	<input type="checkbox"/>	<i>Provide Proposal Reference or Description</i>
3.1.9.2.	The existing disconnect box used for the Maximart Milling Machine, as shown in Figure 3-3, may be re-used by the Contactor for the installation of one of the new machines if it is compatible with the power requirements of the new machine. This connection currently provides 575 VAC / 3 Phase / 60 Hz power to the Maximart Milling Machine. If this disconnect box is not used by the Contractor for the installation of the new machine at this location, then the Contractor must remove and dispose of this box and provide a new box that is compatible with the Contractor's machine.	<input type="checkbox"/>	<input type="checkbox"/>	<i>Provide Proposal Reference or Description</i>

MANDATORY REQUIREMENTS COMPLIANCY MATRIX				
SOW Para. #	MANDATORY REQUIREMENT	COMPLIANT		RESPONSE REQUIREMENT
		Yes	No	
3.1.9.3.	The existing disconnect box used for the Journeyman Milling Machine may be re-used by the Contactor for the installation of one of the new machines if it is compatible with the power requirements of the new machine. This connection currently provides 575 VAC / 3 Phase / 60 Hz power to the Journeyman Milling Machine through a transformer that converts the power to 230 VAC / 3 Phase / 60 Hz for use by this machine. If this disconnect box is not used by the Contractor for the installation of the new machine at this location, then the Contractor must remove and dispose of this box and provide a new box that is compatible with the Contractor's machine.	<input type="checkbox"/>	<input type="checkbox"/>	<i>Provide Proposal Reference or Description</i>
3.1.9.4.	The existing transformer currently used for the Journeyman Milling Machine is hung from the ceiling due to the limited floor space available. If transformers are required for the new machines, then the Contractor must supply and install all necessary transformers in a similar manner as the existing transformer (i.e. to be hung from the ceiling).	<input type="checkbox"/>	<input type="checkbox"/>	<i>Provide Proposal Reference or Description</i>
3.1.9.5.	Each machine must have an electrical plug connection that complies with all applicable codes.	<input type="checkbox"/>	<input type="checkbox"/>	<i>Provide Proposal Reference or Description</i>
3.1.9.6.	The existing plug connection used for the Journeyman Milling Machine, as shown in Figure 3-4, may be re-used by the Contractor for the installation of one of the new machines, if it is compatible with the power requirements of the new machine. If this plug is not used by the Contractor for the installation of the new machine at this location, then the Contractor must remove and dispose of this plug and provide a new plug that is compatible with the Contractor's machine.	<input type="checkbox"/>	<input type="checkbox"/>	<i>Provide Proposal Reference or Description</i>
3.1.9.7.	There is no existing electrical plug connection for the Maximart Milling Machine. The Contractor must provide and install a new electrical plug connection for the new machine to be installed at this location.	<input type="checkbox"/>	<input type="checkbox"/>	<i>Provide Proposal Reference or Description</i>

ANNEX "C"**ATTACHMENT 1 TO PART 3, PRICING SCHEDULE**

The Bidder must complete this pricing schedule and include it in its financial bid once completed. Bidders must include a price for all items. The information in this Annex will form part of the resulting contract. It is anticipated that in the resulting contract, this Annex will become Annex "B".

Bidders are to review paragraph 3.1 Bid Preparation Instructions Section II Financial bid for instructions on the completion of the Pricing Schedule.

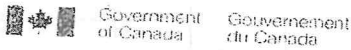
Bidders must fill in the prices for the following items. Goods and Services Tax (GST) and/or the Harmonized Sales Tax (HST) not included.

Item	Description	Proposed Part Numbers Option/ Components	Units of Issue	Qty.	Firm Unit/Lot Prices	Extended Price
001	Disassembly and removal for; Quantity 1, the MAXIMART 4VS-S Vertical Turret Milling Machine, , plus accessories as per the Statement of Work Annex "A", and		Lot	1	\$	\$
002	Disassembly and removal for; Quantity 1 Journeyman 425 CNC Horizontal Milling Machine, plus accessories as per the Statement of Work Annex "A".		Lot	1	\$	\$
003	Supply two (2) Manual Milling Machines and as per the SOW, Annex "A, Para 3.1.2 and 4.1.1 DELIVERY: six (6) weeks after contract award		Each	2	\$	\$
004	Accessories as per the SOW, Annex "A, Para 3.1.2 (b), 3.1.8 and Para 4.1.3 a) Chip and coolant pan: b) Halogen or LED work light: c) Machine leveling bolts and pads: d) 6 inch angle lock vise, Kurt Model D675 DELIVERY: six (6) weeks after contract award		Each	1	\$	\$
			Each	1	\$	\$
			Set	1	\$	\$
			Each	4	\$	\$
005	Control Systems offline software for five (5) computers as per SOW, Annex "A" Para 3.1.2 (c), 3.1.4, 3.1.5, 3.1.6 4.1.2 and 4.2.4 DELIVERY: six (6) weeks after contract award		Lot	1	\$	\$
006	Installation and commissioning of the Manual Milling Machines as per the SOW, Annex "A", Para 3.2.2.4, 3.2.2.5, to 3.2.28 and 4.2.2. DELIVERY: Within two (2) weeks after equipment		Each	2	\$	\$

	<p>delivery.</p> <p>To include all costs for travel, accommodation, meals, wages, living expenses and all other associated costs for the vendor's representative.</p>					
007	<p>Manual and documentation as per the SOW Annex "A", Para 3.2.4.6, 4.3.5, 4.3.6</p> <p>DELIVERY: six (6) weeks after contract award, with equipment</p>		Lot	1	\$	\$
008	<p>Training (on-site) as per the SOW Annex "A" Para 3.2.3 to 3.2.3.6, 3.5.4, 4.2.3 and 4.3.7.</p> <p>DELIVERY: five (5) days after equipment commissioning</p> <p>To include all costs for travel, accommodation, meals, wages, living expenses and all other associated costs for the vendor's representative.</p>		Lot	1	\$	\$
Total Bid Price items 001 to 008 (GST/HST/QST excluded)						\$
009	<p>Trade in value of</p> <p>Quantity 1, the MAXIMART 4VS-S Vertical Turret Milling Machine, , plus accessories as per the Statement of Work Annex "A", and</p>		Lot	1	\$	\$
010	<p>Trade in value of</p> <p>Quantity 1 Journeyman 425 CNC Horizontal Milling Machine, plus accessories as per the Statement of Work Annex "A".</p>		Lot	1	\$	\$
Total Trade in Value items 009 to 010 (GST/HST/QST excluded)						\$
Total Evaluated Bid Price (Total Evaluated Bid Price = Total Bid price for item 001-008 minus (-) Total trade in value for Item 009 and 010)						\$

ANNEX "D"

SECURITY REQUIREMENTS CHECK LIST



288

Contract Number / Numéro du contrat W8486-184197
Security Classification / Classification de sécurité Unclassified

SECURITY REQUIREMENTS CHECK LIST (SRCL)
LISTE DE VÉRIFICATION DES EXIGENCES RELATIVES À LA SÉCURITÉ (LVERS)

PART A - CONTRACT INFORMATION / PARTIE A - INFORMATION CONTRACTUELLE

1. Originating Government Department or Organization / Ministère ou organisme gouvernemental d'origine: **DND**

2. Branch or Directorate / Direction générale ou Direction: **Quality Engineering Test Establishment (QETE)**

3. a) Subcontract Number / Numéro du contrat de sous-traitance: _____

3. b) Name and Address of Subcontractor / Nom et adresse du sous-traitant: _____

4. Brief Description of Work / Brève description du travail:
Purchase, delivery, installation, testing, commissioning and training for Manual Milling Machine Equipment at: QETE
Delivery Address: DND, QETE Supply, NPB Building, 45 Blvd Sacré Coeur, Room C1113, Ramp 7, Gatineau, QC, J8X 1C6

5. a) Will the supplier require access to Controlled Goods? / Le fournisseur aura-t-il accès à des marchandises contrôlées? No / Non Yes / Oui

5. b) Will the supplier require access to unclassified military technical data subject to the provisions of the Technical Data Control Regulations? / Le fournisseur aura-t-il accès à des données techniques militaires non classifiées qui sont assujetties aux dispositions du Règlement sur le contrôle des données techniques? No / Non Yes / Oui

5. Indicate the type of access required / Indiquer le type d'accès requis

6. a) Will the supplier and its employees require access to PROTECTED and/or CLASSIFIED information or assets? (Specify the level of access using the chart in Question 7. c) / Le fournisseur ainsi que les employés auront-ils accès à des renseignements ou à des biens PROTÉGÉS et/ou CLASSIFIÉS? (Préciser le niveau d'accès en utilisant le tableau qui se trouve à la question 7. c) No / Non Yes / Oui

6. b) Will the supplier and its employees (e.g. cleaners, maintenance personnel) require access to restricted access areas? No access to PROTECTED and/or CLASSIFIED information or assets is permitted. / Le fournisseur et ses employés (p. ex. nettoyeurs, personnel d'entretien) auront-ils accès à des zones d'accès restreintes? L'accès à des renseignements ou à des biens PROTÉGÉS et/ou CLASSIFIÉS n'est pas autorisé. No / Non Yes / Oui

6. c) Is this a commercial courier or delivery requirement with no overnight storage? / S'agit-il d'un contrat de messagerie ou de livraison commerciale sans entreposage de nuit? No / Non Yes / Oui

7. a) Indicate the type of information that the supplier will be required to access / Indiquer le type d'information auquel le fournisseur devra avoir accès

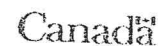
Canada	NATO / OTAN	Foreign / Étranger
No release restrictions / Aucune restriction relative à la diffusion <input type="checkbox"/>	All NATO countries / Tous les pays de l'OTAN <input type="checkbox"/>	No release restrictions / Aucune restriction relative à la diffusion <input type="checkbox"/>
Not releasable / À ne pas diffuser <input type="checkbox"/>		
Restricted to: / Limité à: <input type="checkbox"/>	Restricted to: / Limité à: <input type="checkbox"/>	Restricted to: / Limité à: <input type="checkbox"/>
Specify country(ies): / Préciser le(s) pays: _____	Specify country(ies): / Préciser le(s) pays: _____	Specify country(ies): / Préciser le(s) pays: _____

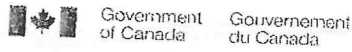
7. c) Level of information / Niveau d'information

Canada	NATO	Foreign
PROTECTED A / PROTÉGÉ A <input type="checkbox"/>	NATO UNCLASSIFIED / NATO NON CLASSIFIÉ <input type="checkbox"/>	PROTECTED A / PROTÉGÉ A <input type="checkbox"/>
PROTECTED B / PROTÉGÉ B <input type="checkbox"/>	NATO RESTRICTED / NATO DIFFUSION RESTREINTE <input type="checkbox"/>	PROTECTED B / PROTÉGÉ B <input type="checkbox"/>
PROTECTED C / PROTÉGÉ C <input type="checkbox"/>	NATO CONFIDENTIAL / NATO CONFIDENTIEL <input type="checkbox"/>	PROTECTED C / PROTÉGÉ C <input type="checkbox"/>
CONFIDENTIAL / CONFIDENTIEL <input type="checkbox"/>	NATO SECRET / NATO SECRET <input type="checkbox"/>	CONFIDENTIAL / CONFIDENTIEL <input type="checkbox"/>
SECRET / SECRET <input type="checkbox"/>	COSMIC TOP SECRET / COSMIC TRÈS SECRET <input type="checkbox"/>	SECRET / SECRET <input type="checkbox"/>
TOP SECRET / TRÈS SECRET <input type="checkbox"/>		TOP SECRET / TRÈS SECRET <input type="checkbox"/>
TOP SECRET (SIGINT) / TRÈS SECRET (SIGINT) <input type="checkbox"/>		TOP SECRET (SIGINT) / TRÈS SECRET (SIGINT) <input type="checkbox"/>
		TOP SECRET (SIGINT) / TRÈS SECRET (SIGINT) <input type="checkbox"/>

TBS/SCT 350-103(2004/12)

Security Classification / Classification de sécurité
Unclassified





Contract Number / Numéro du contrat
Security Classification / Classification de sécurité Unclassified

PART A (continued) / PARTIE A (suite)

8 Will the supplier require access to PROTECTED and/or CLASSIFIED COMSEC information or assets?
Le fournisseur aura-t-il accès à des renseignements ou à des biens COMSEC désignés PROTÉGÉS et/ou CLASSIFIÉS?
If Yes, indicate the level of sensitivity.
Dans l'affirmative, indiquer le niveau de sensibilité:

No Yes
Non Oui

9 Will the supplier require access to extremely sensitive INFOSEC information or assets?
Le fournisseur aura-t-il accès à des renseignements ou à des biens INFOSEC de nature extrêmement délicate?

No Yes
Non Oui

Short Title(s) of material / Titre(s) abrégé(s) du matériel:
Document Number / Numéro du document:

PART B - PERSONNEL (SUPPLIER) / PARTIE B - PERSONNEL (FOURNISSEUR)

10. a) Personnel security screening level required / Niveau de contrôle de la sécurité du personnel requis

<input checked="" type="checkbox"/> RELIABILITY STATUS COTE DE FIABILITE	<input type="checkbox"/> CONFIDENTIAL CONFIDENTIEL	<input type="checkbox"/> SECRET SECRET	<input type="checkbox"/> TOP SECRET TRÈS SECRET
<input type="checkbox"/> TOP SECRET - SIGINT TRÈS SECRET - SIGINT	<input type="checkbox"/> NATO CONFIDENTIAL NATO CONFIDENTIEL	<input type="checkbox"/> NATO SECRET NATO SECRET	<input type="checkbox"/> COSMIC TOP SECRET COSMIC TRÈS SECRET
<input type="checkbox"/> SITE ACCESS ACCÈS AUX EMPLACEMENTS			

Special comments:
Commentaires spéciaux: Site access to operational zone required to install and test equipment and to train QETE staff on its use.

NOTE: If multiple levels of screening are identified, a Security Classification Guide must be provided.
REMARQUE: Si plusieurs niveaux de contrôle de sécurité sont requis, un guide de classification de la sécurité doit être fourni.

10. b) May unscreened personnel be used for portions of the work?
Du personnel sans autorisation sécuritaire peut-il se voir confier des parties du travail?
If Yes, will unscreened personnel be escorted?
Dans l'affirmative, le personnel en question sera-t-il escorté?

No Yes
Non Oui

PART C - SAFEGUARDS (SUPPLIER) / PARTIE C - MESURES DE PROTECTION (FOURNISSEUR)

11. a) Will the supplier be required to receive and store PROTECTED and/or CLASSIFIED information or assets on its site or premises?
Le fournisseur sera-t-il tenu de recevoir et d'entreposer sur place des renseignements ou des biens PROTÉGÉS et/ou CLASSIFIÉS?

No Yes
Non Oui

11. b) Will the supplier be required to safeguard COMSEC Information or assets?
Le fournisseur sera-t-il tenu de protéger des renseignements ou des biens COMSEC?

No Yes
Non Oui

PRODUCTION

11. c) Will the production (manufacture, and/or repair and/or modification) of PROTECTED and/or CLASSIFIED material or equipment occur at the supplier's site or premises?
Les installations du fournisseur serviront-elles à la production (fabrication et/ou réparation et/ou modification) de matériel PROTÉGÉ et/ou CLASSIFIÉ?

No Yes
Non Oui

INFORMATION TECHNOLOGY (IT) MEDIA / SUPPORT RELATIF À LA TECHNOLOGIE DE L'INFORMATION (TI)

11. d) Will the supplier be required to use its IT systems to electronically process, produce or store PROTECTED and/or CLASSIFIED information or data?
Le fournisseur sera-t-il tenu d'utiliser ses propres systèmes informatiques pour traiter, produire ou stocker électroniquement des renseignements ou des données PROTÉGÉS et/ou CLASSIFIÉS?

No Yes
Non Oui

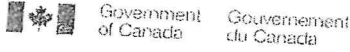
11. e) Will there be an electronic link between the supplier's IT systems and the government department or agency?
Disposera-t-on d'un lien électronique entre le système informatique du fournisseur et celui du ministère ou de l'agence gouvernementale?

No Yes
Non Oui

TBS/SCT 350-103(2004/12)

Security Classification / Classification de sécurité Unclassified
--





Contract Number / Numéro du contrat
Security Classification / Classification de sécurité Unclassified

PART C - (continued) / PARTIE C - (suite)

For users completing the form manually use the summary chart below to indicate the category(ies) and level(s) of safeguarding required at the supplier's site(s) or premises.
Les utilisateurs qui remplissent le formulaire manuellement doivent utiliser le tableau récapitulatif ci-dessous pour indiquer, pour chaque catégorie, les niveaux de sauvegarde requis aux installations du fournisseur.

For users completing the form online (via the Internet), the summary chart is automatically populated by your responses to previous questions.
Dans le cas des utilisateurs qui remplissent le formulaire en ligne (par Internet), les réponses aux questions précédentes sont automatiquement saisies dans le tableau récapitulatif.

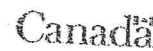
SUMMARY CHART / TABLEAU RÉCAPITULATIF

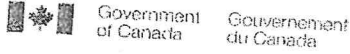
Category Catégorie	PROTECTED PROTÉGÉ			CLASSIFIED CLASSIFIÉ			NATO				COMSEC					
	A	B	C	CONFIDENTIAL CONFIDENTIEL	SECRET	TOP SECRET TRÈS SECRET	NATO RESTRICTED NATO DIFFUSION RESTREINTE	NATO CONFIDENTIAL NATO CONFIDENTIEL	NATO SECRET	COSMIC TOP SECRET COSMIC TRÈS SECRET	PROTECTED PROTÉGÉ			CONFIDENTIAL	SECRET	TOP SECRET TRÈS SECRET
											A	B	C			
Information / Assets Renseignements / Biens Production																
IT Media / Support TI																
IT Link / Lien électronique																

12. a) Is the description of the work contained within this SRCL PROTECTED and/or CLASSIFIED?
La description du travail visé par la présente LVERS est-elle de nature PROTÉGÉE et/ou CLASSIFIÉE?
- If Yes, classify this form by annotating the top and bottom in the area entitled "Security Classification".
Dans l'affirmative, classifiez le présent formulaire en indiquant le niveau de sécurité dans la case intitulée « Classification de sécurité » au haut et au bas du formulaire.
12. b) Will the documentation attached to this SRCL be PROTECTED and/or CLASSIFIED?
La documentation associée à la présente LVERS sera-t-elle PROTÉGÉE et/ou CLASSIFIÉE?
- If Yes, classify this form by annotating the top and bottom in the area entitled "Security Classification" and indicate with attachments (e.g. SECRET with Attachments).
Dans l'affirmative, classifiez le présent formulaire en indiquant le niveau de sécurité dans la case intitulée « Classification de sécurité » au haut et au bas du formulaire et indiquez qu'il y a des pièces jointes (p. ex. SECRET avec des pièces jointes).

TBS/SCT 350-103(2004/12)

Security Classification / Classification de sécurité Unclassified
--





Contract Number / Numéro du contrat
Security Classification / Classification de sécurité Unclassified

PART D - AUTHORIZATION / PARTIE D - AUTORISATION			
13. Organization Project Authority / Charge de projet de l'organisme			
Name (print) - Nom (en lettres moulées) Donald Turcotte		Title - Titre Complex Projects Manager	Signature <i>[Signature]</i>
Telephone No. - N° de téléphone 819-939-9149	Facsimile No. - N° de télécopieur 819-997-2523	E-mail address - Adresse courriel donald.turcotte@forces.gc.ca	Date 30 May 17
14. Organization Security Authority / Responsable de la sécurité de l'organisme			
Name (print) - Nom (en lettres moulées) Tippy Graham Senior Security Analyst		Title - Titre Senior Security Analyst	Signature <i>[Signature]</i>
Telephone No. - N° de téléphone 819-939-0283	Facsimile No. - N° de télécopieur	E-mail address - Adresse courriel tippy.graham@forces.gc.ca	Date 07 July 2017
15. Are there additional instructions (e.g. Security Guide, Security Classification Guide) attached? Des instructions supplémentaires (p. ex. Guide de sécurité, Guide de classification de la sécurité) sont-elles jointes?			
			<input type="checkbox"/> No / Non <input checked="" type="checkbox"/> Yes / Oui
16. Procurement Officer / Agent d'approvisionnement			
Name (print) - Nom (en lettres moulées) Valerie Blakie		Title - Titre Procurement Officer	Signature <i>[Signature]</i>
Telephone No. - N° de téléphone 819-939-6477	Facsimile No. - N° de télécopieur	E-mail address - Adresse courriel Valerie.Blakie@forces.gc.ca	Date 21 June 2017
17. Contracting Security Authority / Autorité contractante en matière de sécurité			
		Signature	
		E-mail address - Adresse courriel	Date July 25/17

Roxanne Antille
Contract Security Officer
Tel: 613-948-2561, Fax: 613-948-1712
Roxanne.Antille@tpsgc-pwgsc.gc.ca

ANNEX "E" to PART 3 OF THE - BID SOLICITATION

ELECTRONIC PAYMENT INSTRUMENTS

The Bidder accepts any of the following Electronic Payment Instrument(s):

- Direct Deposit (Domestic and International);
- Electronic Data Interchange (EDI);
- Wire Transfer (International Only);

ANNEX "F"

COMMERCIAL GENERAL LIABILITY INSURANCE

1. The Contractor must obtain Commercial General Liability Insurance, and maintain it in force throughout the duration of the Contract, in an amount usual for a contract of this nature, but for not less than \$2,000,000 per accident or occurrence and in the annual aggregate.
2. The Commercial General Liability policy must include the following:
3.
 - a. Additional Insured: Canada is added as an additional insured, but only with respect to liability arising out of the Contractor's performance of the Contract. The interest of Canada should read as follows: Canada, as represented by Public Works and Government Services Canada.
 - b. Bodily Injury and Property Damage to third parties arising out of the operations of the Contractor.
 - c. Products and Completed Operations: Coverage for bodily injury or property damage arising out of goods or products manufactured, sold, handled, or distributed by the Contractor and/or arising out of operations that have been completed by the Contractor.
 - d. Personal Injury: While not limited to, the coverage must include Violation of Privacy, Libel and Slander, False Arrest, Detention or Imprisonment and Defamation of Character.
 - e. Cross Liability/Separation of Insureds: Without increasing the limit of liability, the policy must protect all insured parties to the full extent of coverage provided. Further, the policy must apply to each Insured in the same manner and to the same extent as if a separate policy had been issued to each.
 - f. Blanket Contractual Liability: The policy must, on a blanket basis or by specific reference to the Contract, extend to assumed liabilities with respect to contractual provisions.
 - g. Employees and, if applicable, Volunteers must be included as Additional Insured.
 - h. Employers' Liability (or confirmation that all employees are covered by Worker's compensation (WSIB) or similar program)
 - i. Broad Form Property Damage including Completed Operations: Expands the Property Damage coverage to include certain losses that would otherwise be excluded by the standard care, custody or control exclusion found in a standard policy.
 - j. Notice of Cancellation: The Insurer will endeavour to provide the Contracting Authority thirty (30) days written notice of policy cancellation.
 - k. If the policy is written on a claims-made basis, coverage must be in place for a period of at least 12 months after the completion or termination of the Contract.
 - l. Owners' or Contractors' Protective Liability: Covers the damages that the Contractor becomes legally obligated to pay arising out of the operations of a subcontractor.
 - m. Non-Owned Automobile Liability - Coverage for suits against the Contractor resulting from the use of hired or non-owned vehicles.
 - n. Litigation Rights: Pursuant to subsection 5(d) of the *Department of Justice Act*, S.C. 1993, c. J-2, s.1, if a suit is instituted for or against Canada which the Insurer would, but for this clause, have the right to pursue or defend on behalf of Canada as an Additional Named Insured under the insurance policy, the Insurer must promptly contact the Attorney General of Canada to agree on the legal strategies by sending a letter, by registered mail or by courier, with an acknowledgement of receipt.

For the province of Quebec, send to:

*Director Business Law Directorate,
Quebec Regional Office (Ottawa),
Department of Justice,*

284 Wellington Street, Room SAT-6042,
Ottawa, Ontario, K1A 0H8

For other provinces and territories, send to:

Senior General Counsel,
Civil Litigation Section,
Department of Justice
234 Wellington Street, East Tower
Ottawa, Ontario K1A 0H8

A copy of the letter must be sent to the Contracting Authority. Canada reserves the right to co-defend any action brought against Canada. All expenses incurred by Canada to co-defend such actions will be at Canada's expense. If Canada decides to co-defend any action brought against it, and Canada does not agree to a proposed settlement agreed to by the Contractor's insurer and the plaintiff(s) that would result in the settlement or dismissal of the action against Canada, then Canada will be responsible to the Contractor's insurer for any difference between the proposed settlement amount and the amount finally awarded or paid to the plaintiffs (inclusive of costs and interest) on behalf of Canada.