

THIS DRAWING IS PROVIDED TO REFLECT THE GENERAL EXTENT OF WORK AND AS SUCH DOES NOT NECESSARILY INDICATE THE ENTIRE SCOPE OF WORK. THIS DRAWING IS TO BE READ IN CONJUNCTION WITH RELATED ARCHITECTURAL, STRUCTURAL, ELECTRICAL AND/OR MECHANICAL DRAWINGS, DETAILS, SPECIFICATIONS, TENDER AND/OR OTHER CONTRACT DOCUMENTS, AS APPLICABLE.

THIS DRAWING AND ITS RELATED DESIGNS, CALCULATIONS AND SPECIFICATIONS ARE INSTRUMENTS OF PROFESSIONAL SERVICE FOR THE PROJECT ONLY. THIS DRAWING SHALL NOT BE USED FOR ANY OTHER PROJECT WITHOUT THE EXPRESS WRITTEN CONSENT OF THE ENGINEER. THE ENGINEER ACCEPTS NO RESPONSIBILITY FOR LOSSES, DAMAGES OR COSTS ARISING OUT OF ANY USE OR REUSE OF THIS DRAWING NOT SPECIFICALLY AUTHORIZED BY THE ENGINEER IN WRITING.

"RECORD" OR "AS-BUILT" VERSIONS OF THIS DRAWING ARE BASED ON INFORMATION PROVIDED BY OTHERS AND THE ENGINEER NEITHER EXPRESSLY NOR IMPLICITLY WARRANTS THE ACCURACY OR COMPLETENESS OF SAID DOCUMENTS.

EXCEPT AS MAY BE CERTIFIED OTHERWISE IN WRITING BY THE ENGINEER, ONLY THE REPRODUCIBLE HARD COPY BEARING THE ENGINEER'S SEAL AND ORIGINAL SIGNATURE SHALL CONSTITUTE THE ORIGINAL OF THIS DRAWING.

THIS DRAWING IS NOT TO BE SCALED. OBTAIN ACCURATE DIMENSIONS FROM ARCHITECTURAL DRAWINGS OR SITE MEASUREMENTS.

2	Re-issued For Tender	Sept. 25 2017
1	Issued For 95% Review	May 25 2017
0	Issued For Permit and Pricing	Jan. 27 2017
Rev.	Description	Date

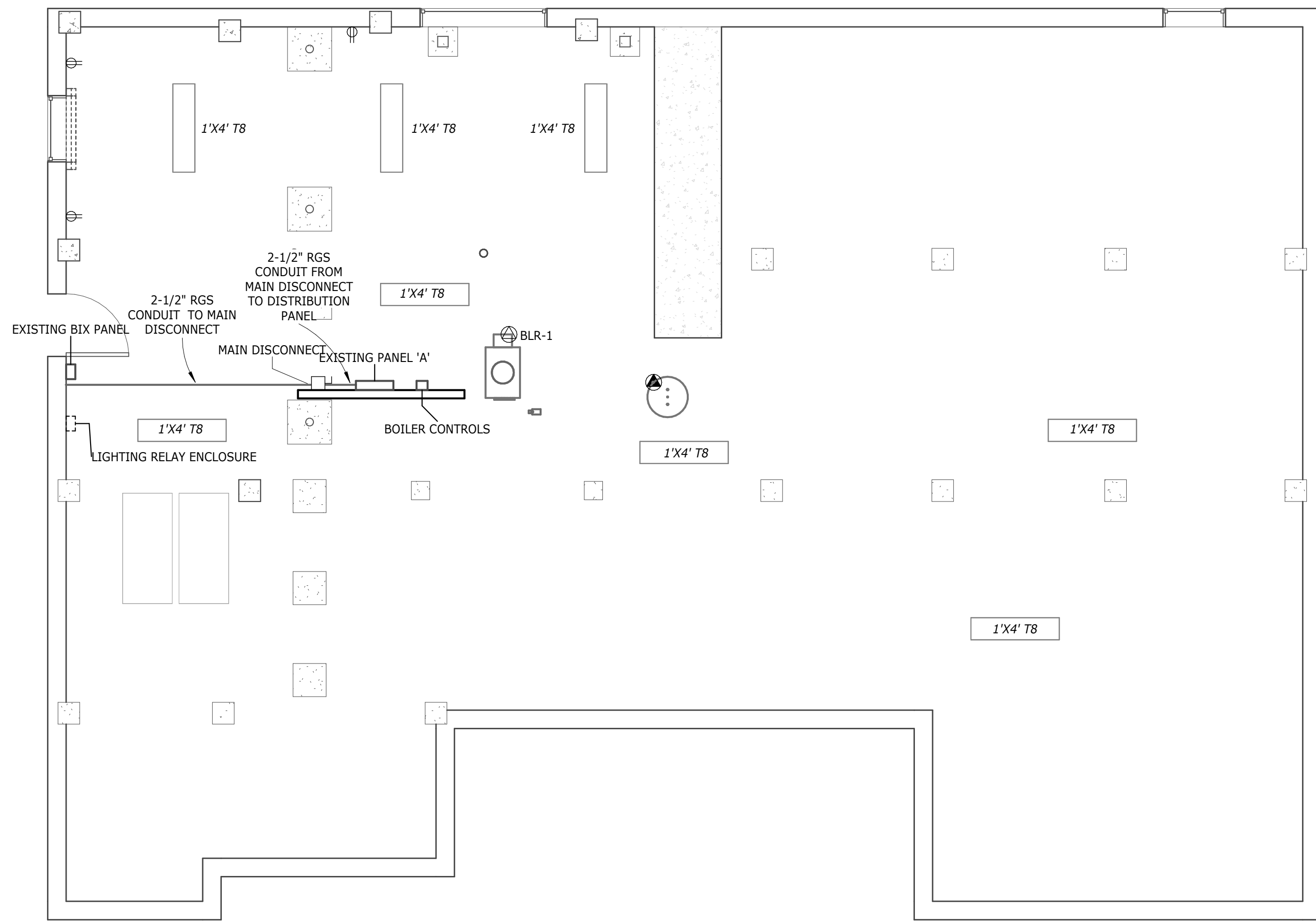


PROJECT:  
**HARRY HACHEY  
 CONFERENCE  
 CENTER**

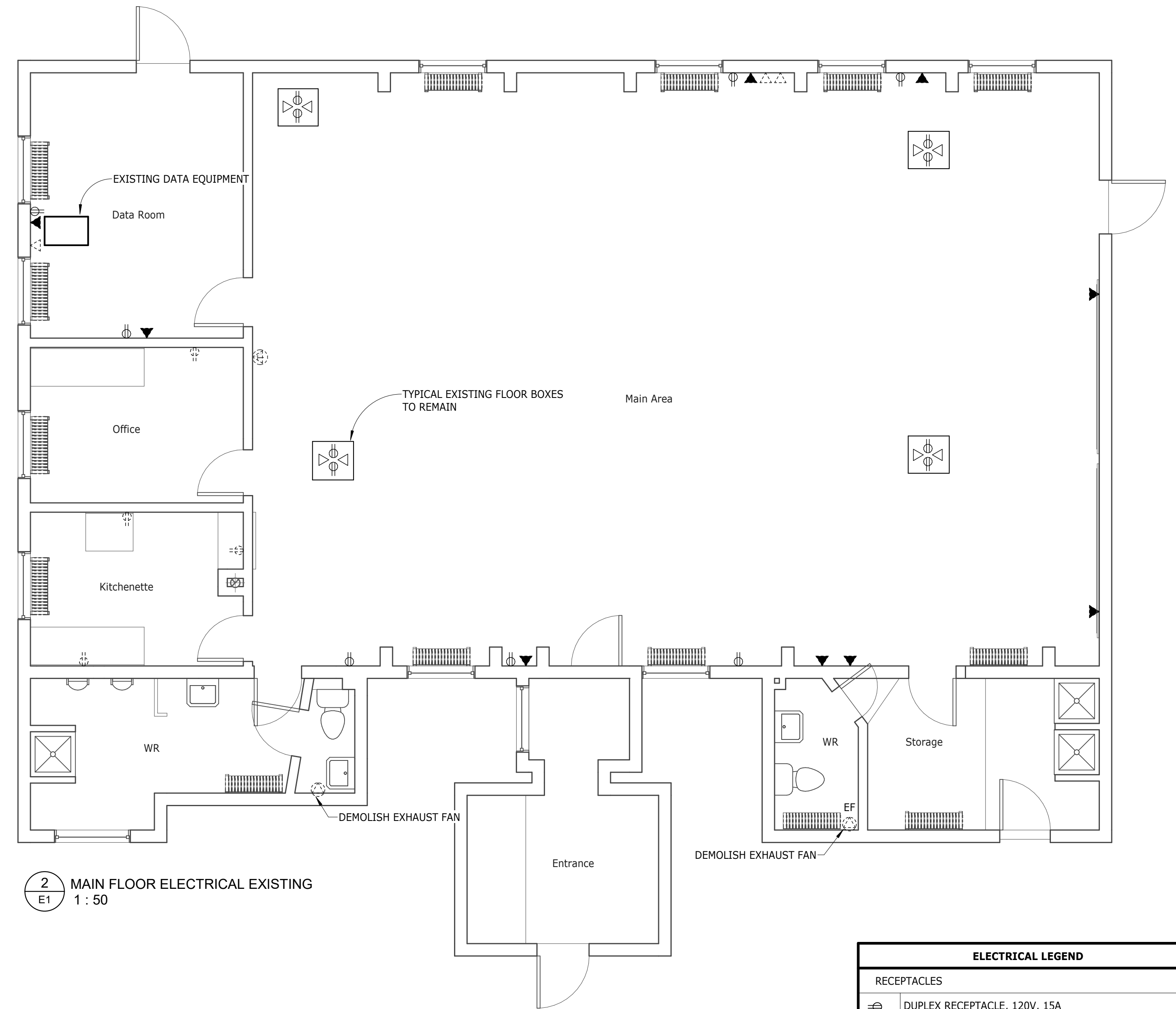
ST. ANDREWS, NB  
 DRAWING TITLE:  
**EXISTING  
 ELECTRICAL  
 CONDITIONS**

DRAWN: JDB FILE NO: 12225

DWG: **E1**



**1** BASEMENT ELECTRICAL EXISTING  
 E1 1 : 50



**2** MAIN FLOOR ELECTRICAL EXISTING  
 E1 1 : 50

DATA/COMMUNICATIONS	
	120V, 15A RECEPTACLE
	DATA/TELEPHONE OUTLET 1-CAT6 DATA TO EQUIPMENT ROOM DATA EQUIPMENT 1-CAT6 TELEPHONE TO BASEMENT TELEPHONE PANEL
	RESIDENT DATA OUTLET 1-CAT6 DATA TO EQUIPMENT ROOM DATA EQUIPMENT
	TELEPHONE OUTLET 1-CAT6 TELEPHONE TO BASEMENT TELEPHONE PANEL
	WiFi ROUTER
<b>DATA ANNOTATION</b> A = ABOVE COUNTER	

ELECTRICAL LEGEND	
RECEPTACLES	
	DUPLEX RECEPTACLE, 120V, 15A
	QUADRUPLEX RECEPTACLE (TWO DUPLEX) ON COMMON COVERPLATE, 120V, 15A
	SINGLE RECEPTACLE 208V
	GFCI RECEPTACLE, 120V, 15A
	T-SLOT RECEPTACLE, 120V, 20A, NEMA 5-20RA
	SURFACE-MOUNTED RECEPTACLE, 120V, 15A
	EXTERIOR, WEATHERPROOF GFCI RECEPTACLE
	FLOOR BOX MOUNTED RECEPTACLE, 120V, 15A
GENERAL RECEPTACLE ANNOTATIONS G = GFCI T = TAMPERPROOF TVSS = SURGE PROTECTION 208V = 208V RECEPTACLE F = FRIDGE RECEPTACLE	
ELECTRICAL CONNECTIONS	
	DIRECT CONNECTION, 120V
	DIRECT CONNECTION, 120V IN WALL BOX
	DIRECT CONNECTION, 240V, 2 POLE
	DISCONNECT: AMPERAGE, VOLTAGE AND NUMBER OF POLES TO MATCH LOAD CONNECTED
	JUNCTION BOX C/W 120V CIRCUITS
	IN-LINE RESISTANCE HEATER THERMOSTAT
	CEILING-MOUNTED OCCUPANCY SENSOR LIGHTING CONTROL SYSTEM
	ELECTRICAL PANEL OR ELECTRICAL EQUIPMENT AS DESIGNATED
	FORCE FLOW HEATER
EQUIPMENT DESIGNATIONS EF - EXHAUST FAN FF - FORCE-FLOW ELECTRIC HEATER AC - AIR CONDITIONER TX - TRANSFORMER	
<b>LINE-WORK LEGEND:</b>	
	EXISTING TO REMAIN: _____
	DEMOLISH ELECTRICAL: - - - - -
	NEW ELECTRICAL: _____

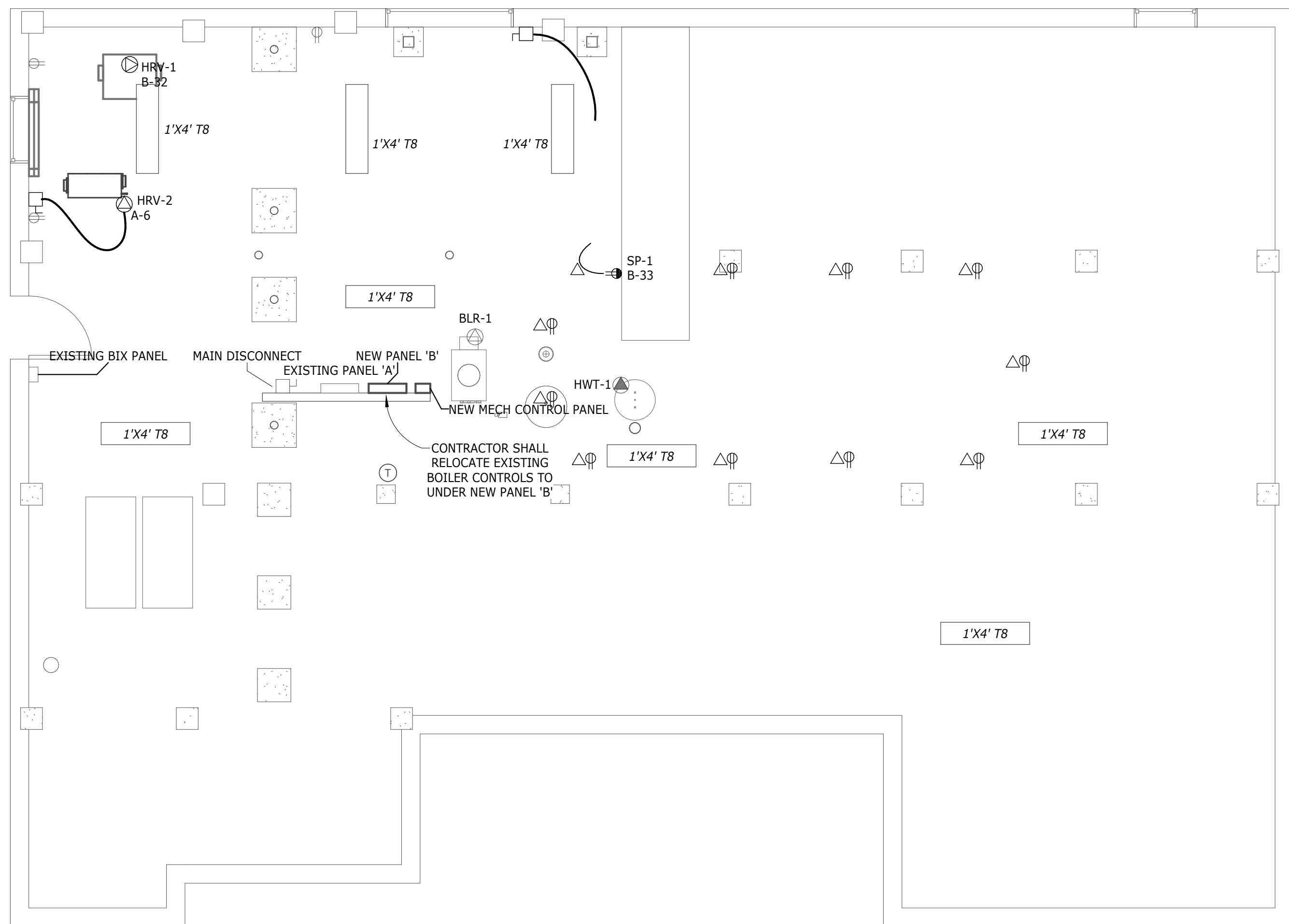
THIS DRAWING IS PROVIDED TO REFLECT THE GENERAL EXTENT OF WORK AND AS SUCH DOES NOT NECESSARILY INDICATE THE ENTIRE SCOPE OF WORK. THIS DRAWING IS TO BE READ IN CONJUNCTION WITH RELATED ARCHITECTURAL, STRUCTURAL, ELECTRICAL AND/OR MECHANICAL DRAWINGS, DETAILS, SPECIFICATIONS, TENDER AND/OR OTHER CONTRACT DOCUMENTS, AS APPLICABLE.

THIS DRAWING AND ITS RELATED DESIGNS, CALCULATIONS AND SPECIFICATIONS ARE INSTRUMENTS OF PROFESSIONAL SERVICE FOR THE EXECUTION OF THE WORK ON THIS PROJECT ONLY. THIS DRAWING SHALL NOT BE USED FOR ANY OTHER PROJECT WITHOUT THE EXPRESS WRITTEN CONSENT OF THE ENGINEER. THE ENGINEER ACCEPTS NO RESPONSIBILITY FOR LOSSES, DAMAGES OR COSTS ARISING OUT OF ANY USE OR REUSE OF THIS DRAWING NOT SPECIFICALLY AUTHORIZED BY THE ENGINEER IN WRITING.

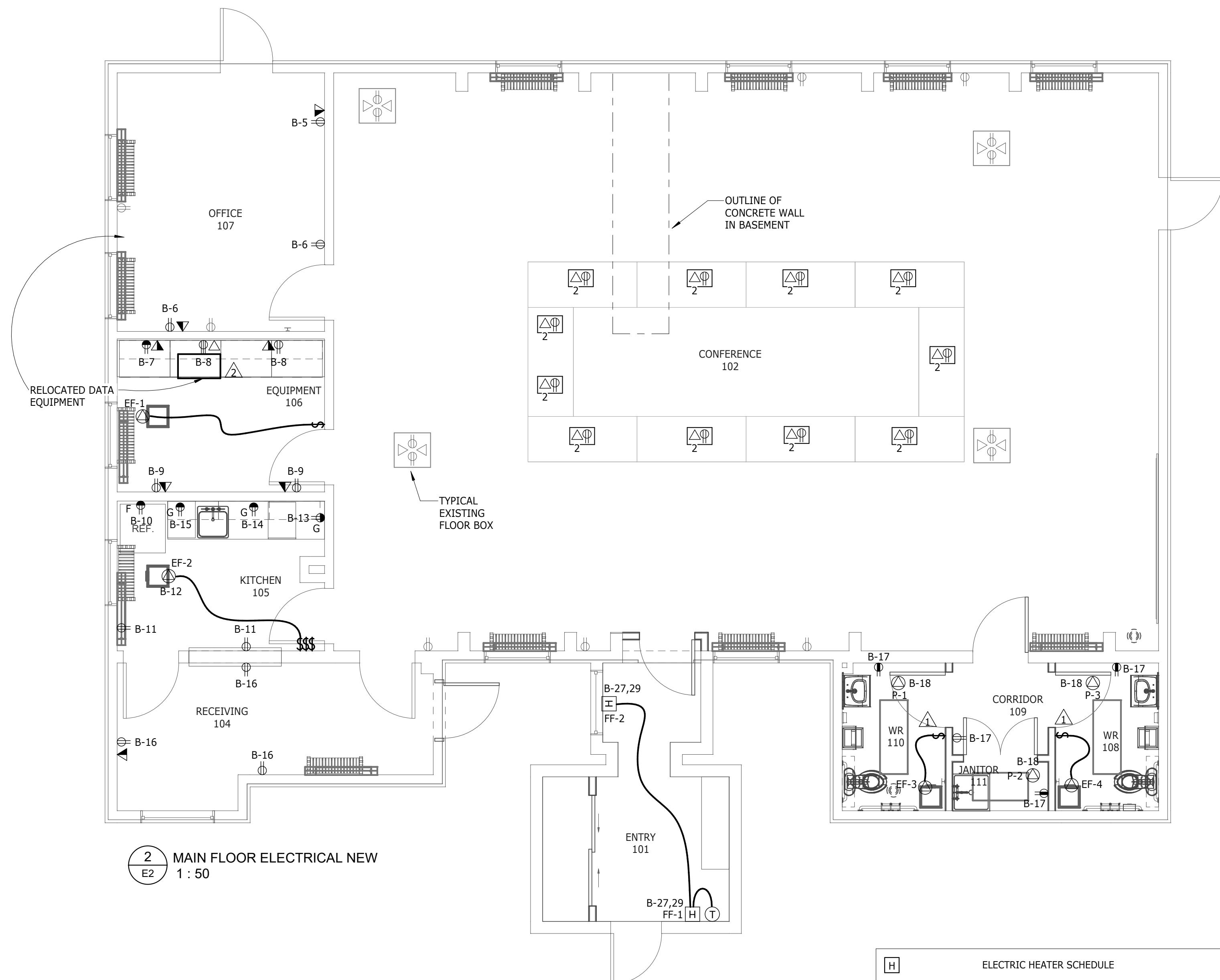
"RECORD" OR "AS-BUILT" VERSIONS OF THIS DRAWING ARE BASED ON INFORMATION PROVIDED BY OTHERS AND THE ENGINEER NEITHER EXPRESSLY NOR IMPLICITLY WARRANTS THE ACCURACY OR COMPLETENESS OF SAID DOCUMENTS.

EXCEPT AS MAY BE CERTIFIED OTHERWISE IN WRITING BY THE ENGINEER, ONLY THE REPRODUCIBLE HARD COPY BEARING THE ENGINEER'S SEAL AND ORIGINAL SIGNATURE SHALL CONSTITUTE THE ORIGINAL OF THIS DRAWING.

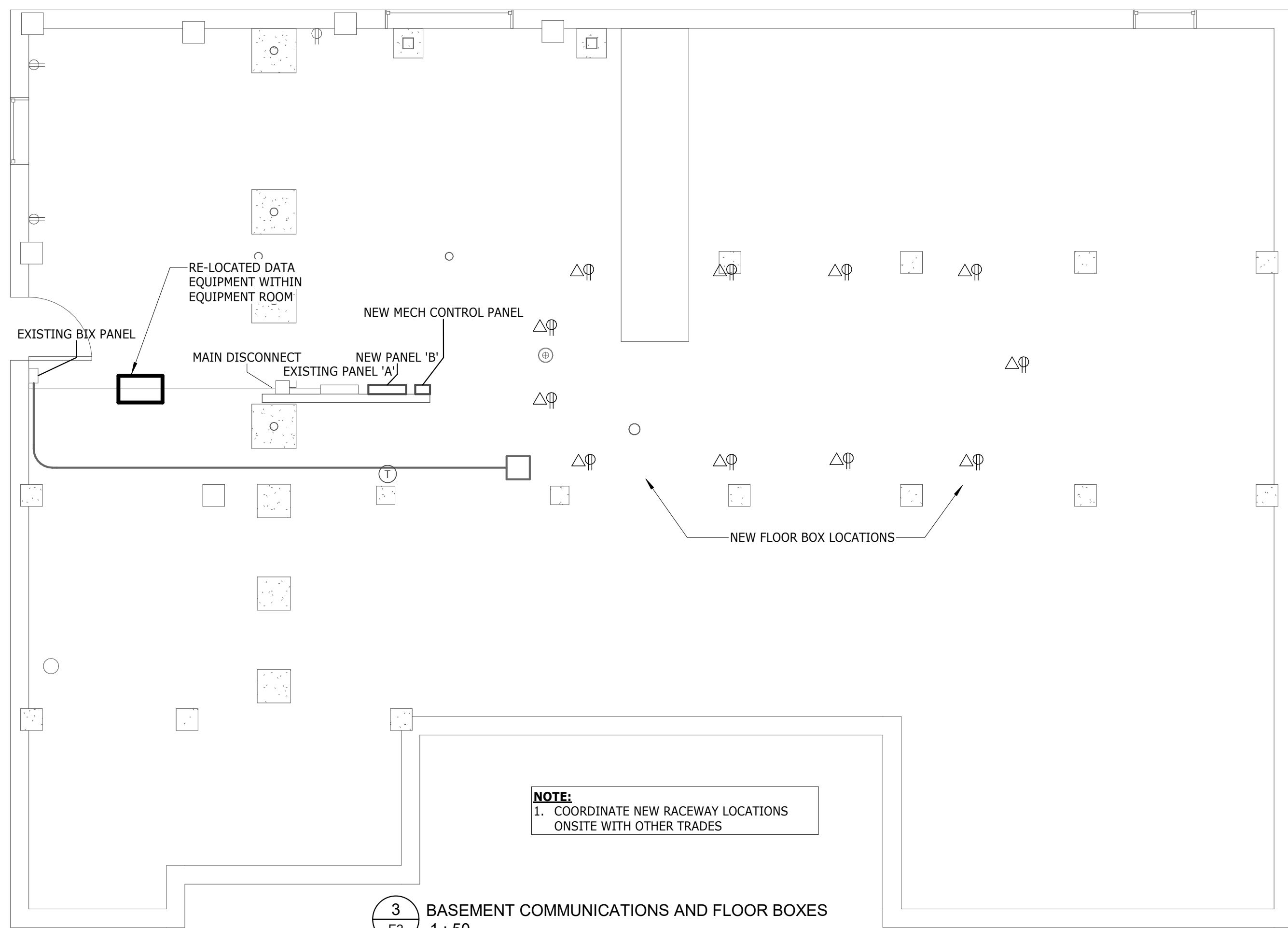
THIS DRAWING IS NOT TO BE SCALED. OBTAIN ACCURATE DIMENSIONS FROM ARCHITECTURAL DRAWINGS OR SITE MEASUREMENTS.



1 BASEMENT ELECTRICAL NEW  
 E2 1 : 50



2 MAIN FLOOR ELECTRICAL NEW  
 E2 1 : 50



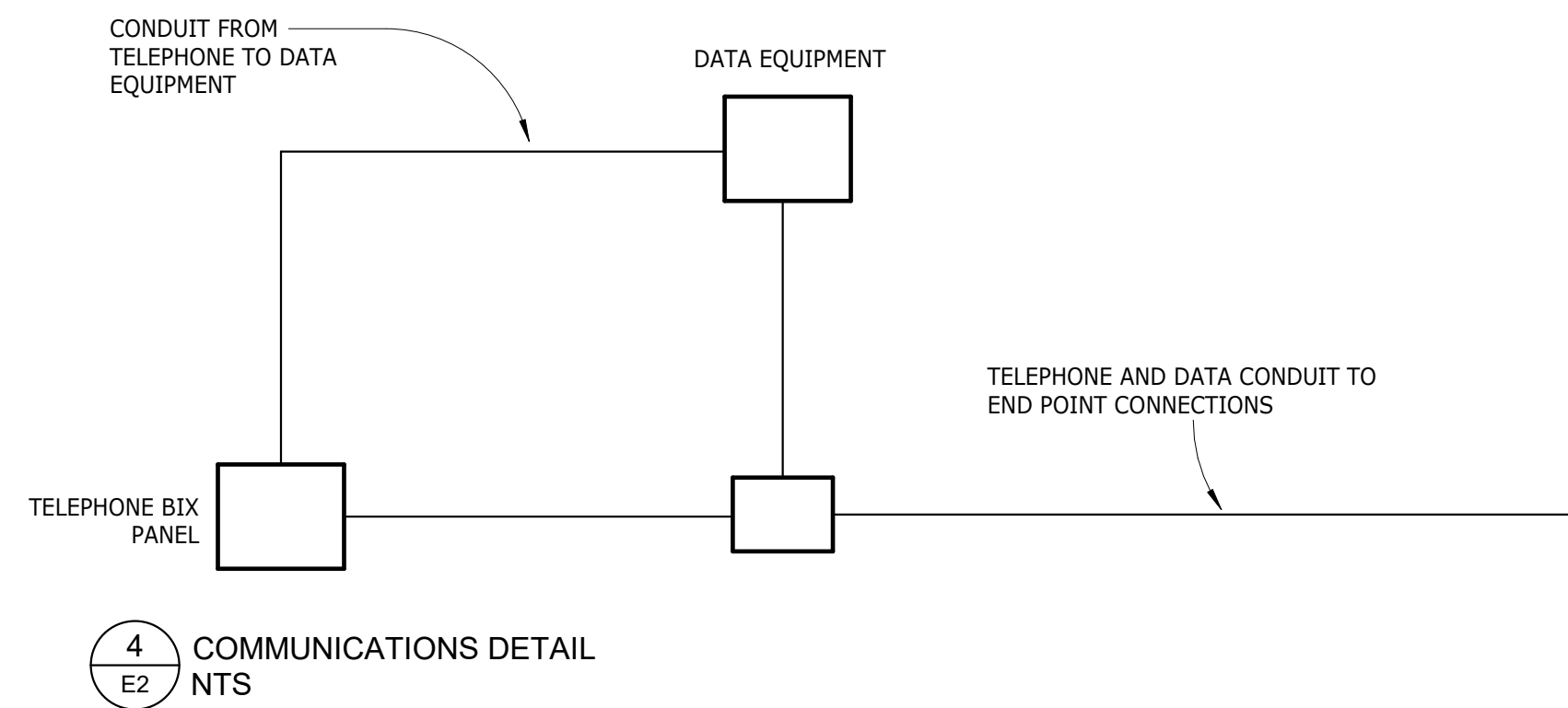
3 BASEMENT COMMUNICATIONS AND FLOOR BOXES  
 E2 1 : 50

FLOOR BOX LEGEND	
	NEW FLOOR BOX - STEEL CITY 60W SERIES FLOOR BOXES (FLUSH SERVICE FLOOR BOXES) FOR WOOD FLOOR INSTALLATIONS.
	FLOOR BOX COMPLETE WITH: DOUBLE GANGED - 1X DUPLEX RECEPTACLE, AND 1 X DATA OUTLET WITH 2 JACKS (2 DATA DROPS) NUMBER INDICATES DATA DROP QUANTITY

ELECTRIC HEATER SCHEDULE		
HEATER TYPE	DESCRIPTION	PLAN TAG
FORCE-FLOW HEATER	750W 240V 2P	FF-1
FORCE-FLOW HEATER	750W 240V 2P	FF-2

NEW ELECTRICAL KEYNOTES	
Tag	DESCRIPTION
1	EQUIPMENT ROOM 106 SWITCH: ONE SWITCH FOR BOTH LIGHTING AND EXHAUST FAN. SWITCH SHALL SHUT OFF EXHAUST FAN AFTER 15 MINUTES DELAY.
2	EQUIPMENT ROOM: RELOCATE DATA & COMMUNICATIONS EQUIPMENT AND ASSOCIATED FEEDERS (ENTRANCE LINES) TO NEW ADJACENT EQUIPMENT ROOM.



4 COMMUNICATIONS DETAIL  
 E2 NTS

Rev	Description	Date
2	Re-issued For Tender	Sept. 25 2017
1	Issued For 90% Review	May 29 2017
0	Issued For Permit and Pricing	Jan. 27 2017



PROJECT:  
**HARRY HACHEY  
 CONFERENCE  
 CENTER**

ST. ANDREWS, NB  
 DRAWING TITLE:  
**NEW ELECTRICAL**

DRAWN: JDB  
 FILE NO: 12225

DWG:  
**E2**

THIS DRAWING IS PROVIDED TO REFLECT THE GENERAL EXTENT OF WORK AND AS SUCH DOES NOT NECESSARILY INDICATE THE ENTIRE SCOPE OF WORK. THIS DRAWING IS TO BE READ IN CONJUNCTION WITH RELATED ARCHITECTURAL, STRUCTURAL, ELECTRICAL AND/OR MECHANICAL DRAWINGS, DETAILS, SPECIFICATIONS, TENDER AND/OR OTHER CONTRACT DOCUMENTS, AS APPLICABLE.

THIS DRAWING AND ITS RELATED DESIGNS, CALCULATIONS AND SPECIFICATIONS ARE INSTRUMENTS OF PROFESSIONAL SERVICE FOR THE EXECUTION OF THE WORK ON THIS PROJECT ONLY. THIS DRAWING SHALL NOT BE USED FOR ANY OTHER PROJECT WITHOUT THE EXPRESS WRITTEN CONSENT OF THE ENGINEER. THE ENGINEER ACCEPTS NO RESPONSIBILITY FOR LOSSES, DAMAGES OR COSTS ARISING OUT OF ANY USE OR REUSE OF THIS DRAWING NOT SPECIFICALLY AUTHORIZED BY THE ENGINEER IN WRITING.

"RECORD" OR "AS-BUILT" VERSIONS OF THIS DRAWING ARE BASED ON INFORMATION PROVIDED BY OTHERS AND THE ENGINEER NEITHER EXPRESSLY NOR IMPLICITLY WARRANTS THE ACCURACY OR COMPLETENESS OF SAID DOCUMENTS.

EXCEPT AS MAY BE CERTIFIED OTHERWISE IN WRITING BY THE ENGINEER, ONLY THE REPRODUCIBLE HARD COPY BEARING THE ENGINEER'S SEAL AND ORIGINAL SIGNATURE SHALL CONSTITUTE THE ORIGINAL OF THIS DRAWING.

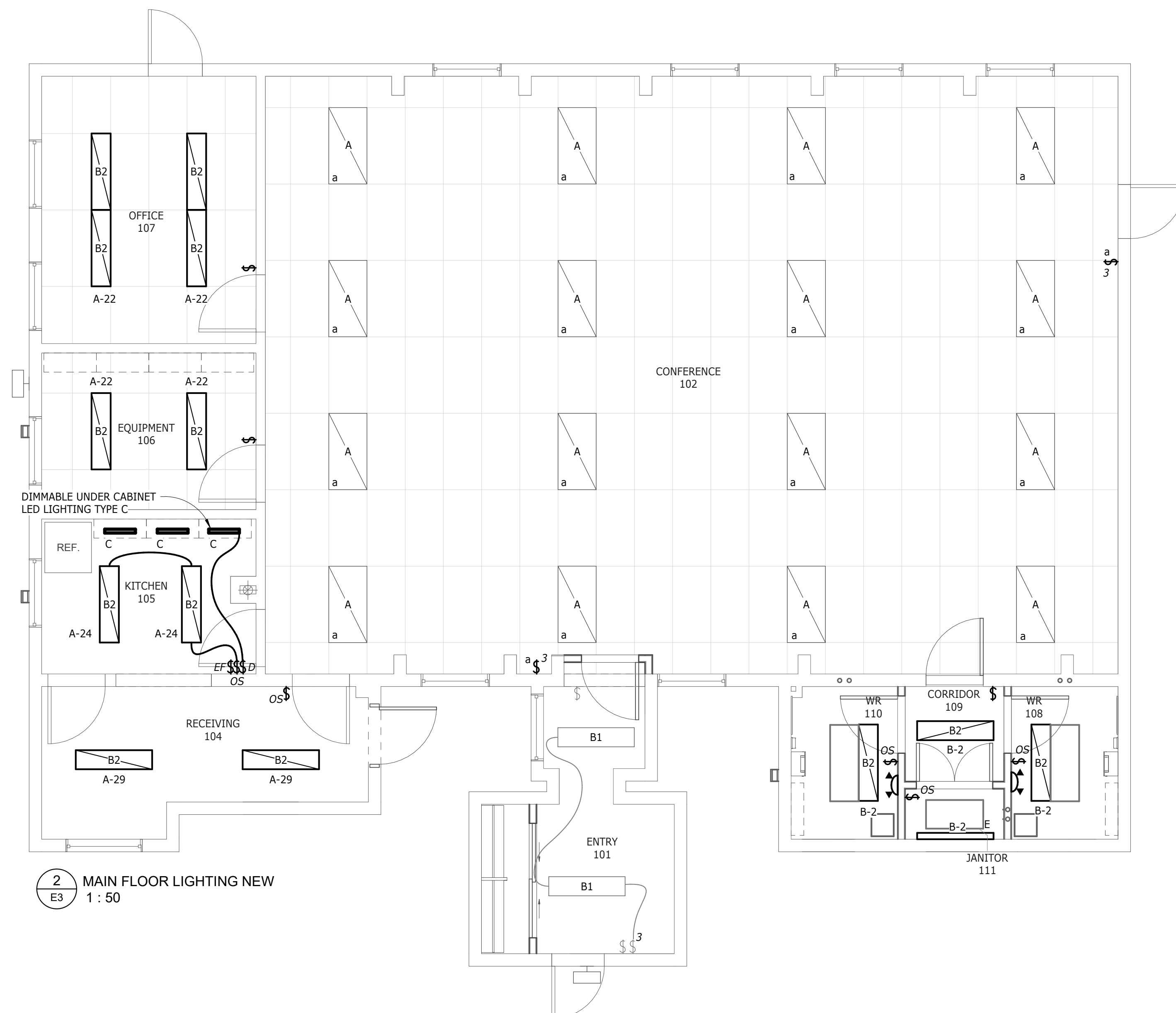
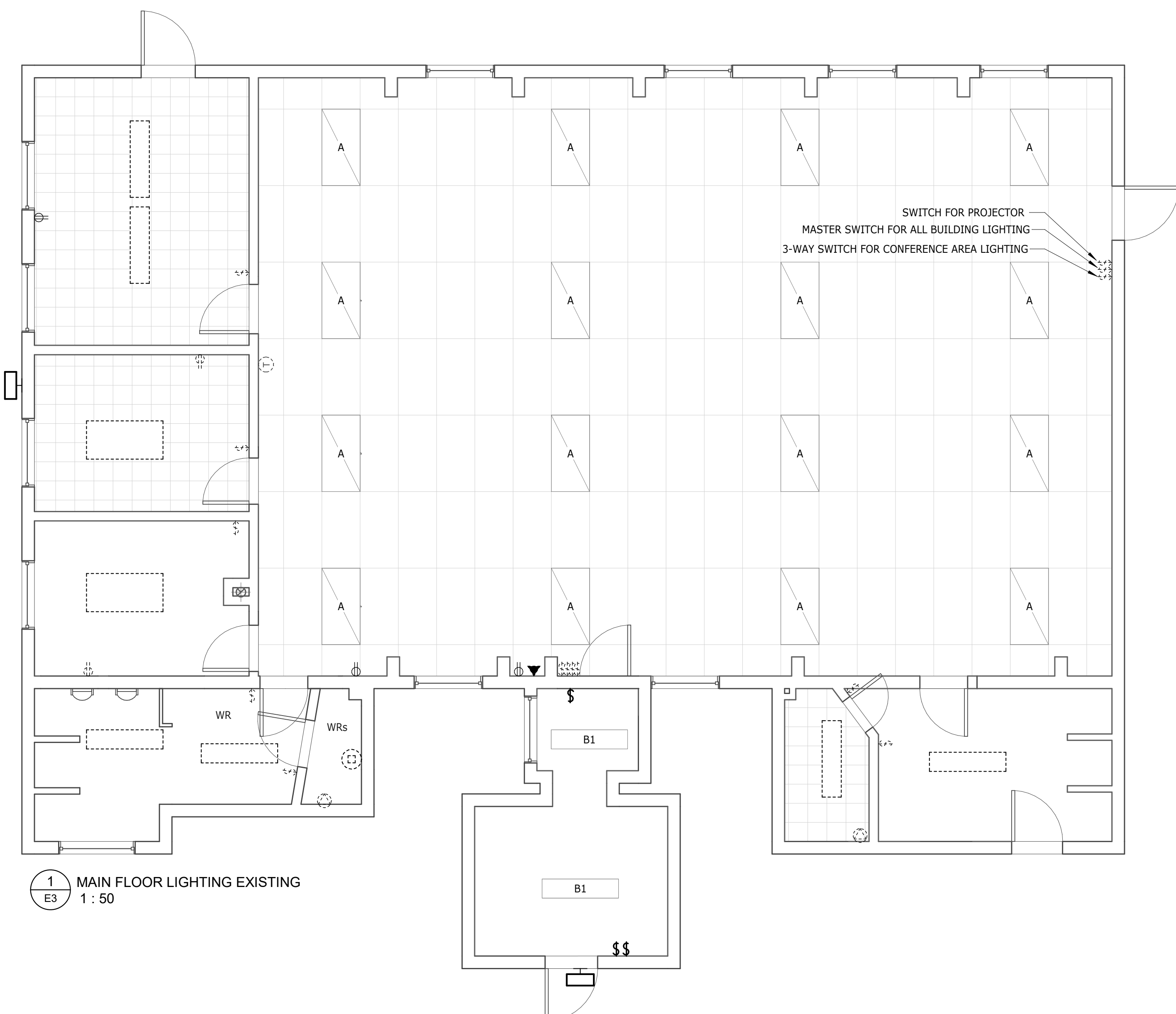
THIS DRAWING IS NOT TO BE SCALED. OBTAIN ACCURATE DIMENSIONS FROM ARCHITECTURAL DRAWINGS OR SITE MEASUREMENTS.

2	Re-issued For Tender	Sept 25 2017
1	Issued For 90% Review	May 29 2017
0	Issued For Permit and Pricing	Jan 27 2017
Rev	Description	Date



PROJECT:  
**HARRY HACHEY  
CONFERENCE  
CENTER**

ST. ANDREWS, NB  
DRAWING TITLE:  
**LIGHTING PLAN**



LIGHT FIXTURE LEGEND			
SYMBOL	DESCRIPTION	MANUFACTURER	LAMP
	T8 FLOURESCENT RECESSED PRISMATIC LIGHT FIXTURE	EXISTING FIXTURE TYPE	T8 32W
	T8 FLOURESCENT SURFACE PRISMATIC LIGHT FIXTURE	EXISTING FIXTURE TYPE	T8 32W
	LED RECESSED 300mm X 1200mm FIXTURE	PHILIPS DAY-BRITE 1AVEG38L840-4-ACR-UNV-DIM	3800 LUMEN LED, 4000K 40W
	LED UNDERCABINET LIGHT FIXTURE	PHILIPS eW PROFILE POWERCORE	480 LUMEN LED, 4000K 10W
	LED STRIP LIGHT WALL MOUNTED	PHILIPS SF4C38A5OUUS C/W MOTION SENSOR	4000 LUMEN LED, 4000K 40W
	EXIT SIGN AND EMERGENCY LIGHT COMBO UNIT	AIMLITE CARPW1250-2-M-2MD	2-4LR
	EMERGENCY LIGHT BATTERY UNIT 12VDC/120AC, 44W	AIMLITE EBST-12050-2MD-4WLR	2-4WLR
	EMERGENCY LIGHT REMOTE HEAD COMPATIBLE WITH BATTERY UNIT	AIMLITE EBST-REMOTE HEAD	2-4WLR
	<b>SWITCH LETTER DESIGNATIONS:</b> a - LOWERCASE LETTER INDICATES SWITCH ID AND ASSOCIATED LIGHT FIXTURES EF - INDICATES SWITCH USED FOR EXHAUST FAN IN ASSOCIATED SPACE OS - INDICATES SWITCH IMPLEMENTS OCCUPANCY SENSOR D - INDICATES DIMMER SWITCH		

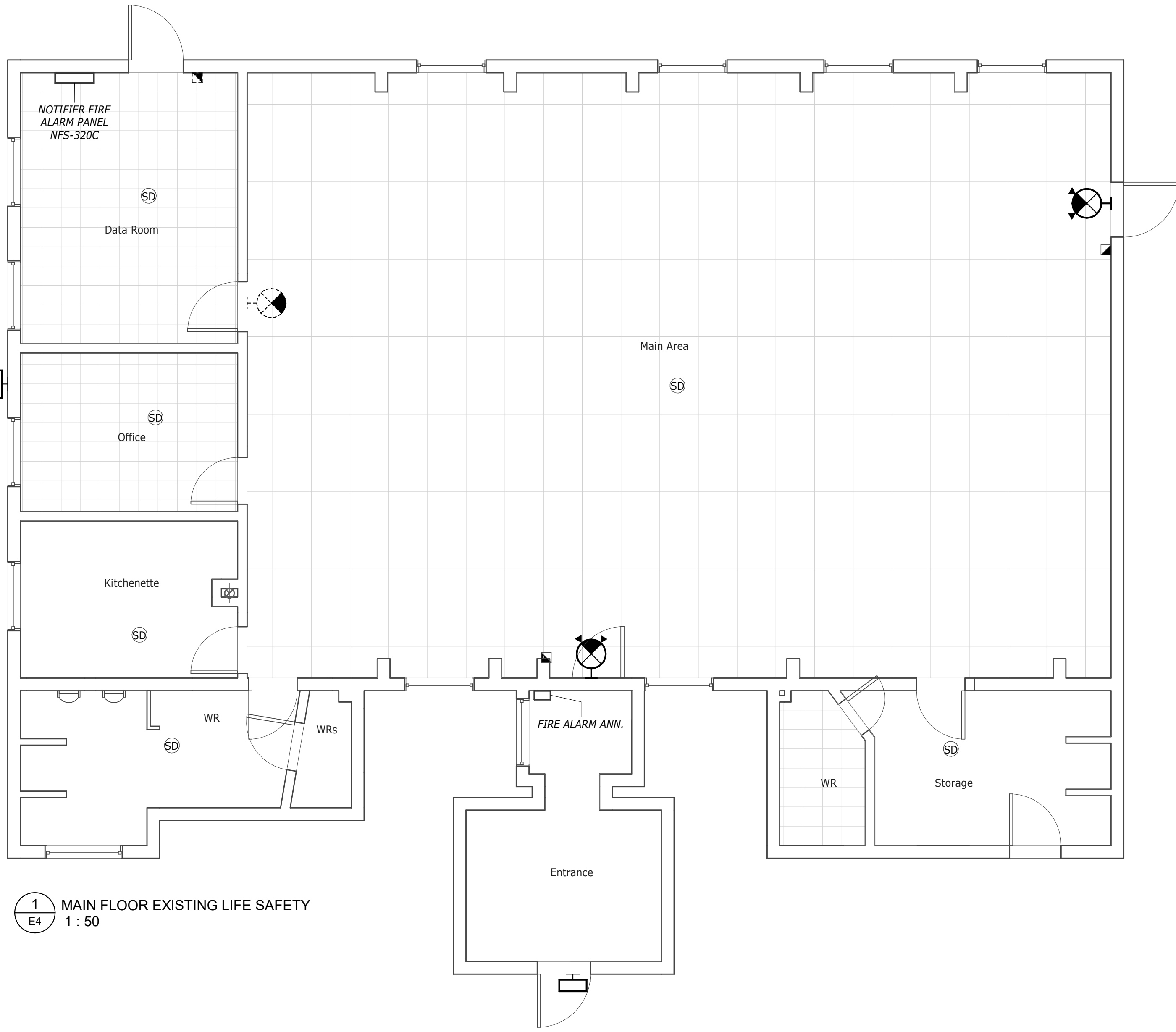
THIS DRAWING IS PROVIDED TO REFLECT THE GENERAL EXTENT OF WORK AND AS SUCH DOES NOT NECESSARILY INDICATE THE ENTIRE SCOPE OF WORK. THIS DRAWING IS TO BE READ IN CONJUNCTION WITH RELATED ARCHITECTURAL, STRUCTURAL, ELECTRICAL AND/OR MECHANICAL DRAWINGS, DETAILS, SPECIFICATIONS, TENDER AND/OR OTHER CONTRACT DOCUMENTS, AS APPLICABLE.

THIS DRAWING AND ITS RELATED DESIGNS, CALCULATIONS AND SPECIFICATIONS ARE INSTRUMENTS OF PROFESSIONAL SERVICE FOR THE EXECUTION OF THE WORK ON THIS PROJECT ONLY. THIS DRAWING SHALL NOT BE USED FOR ANY OTHER PROJECT WITHOUT THE EXPRESS WRITTEN CONSENT OF THE ENGINEER. THE ENGINEER ACCEPTS NO RESPONSIBILITY FOR LOSSES, DAMAGES OR COSTS ARISING OUT OF ANY USE OR REUSE OF THIS DRAWING NOT SPECIFICALLY AUTHORIZED BY THE ENGINEER IN WRITING.

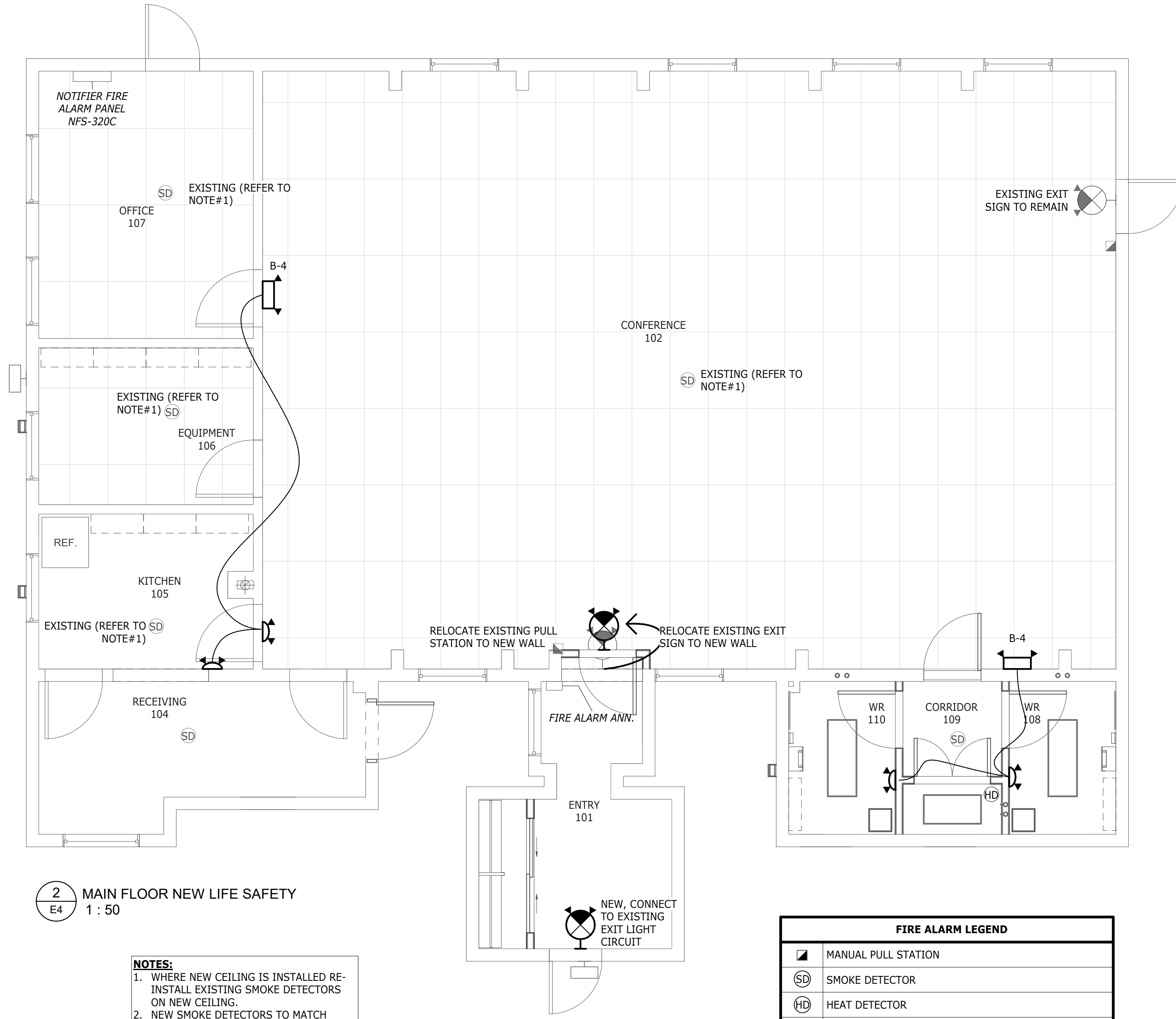
"RECORD" OR "AS-BUILT" VERSIONS OF THIS DRAWING ARE BASED ON INFORMATION PROVIDED BY OTHERS AND THE ENGINEER NEITHER EXPRESSLY NOR IMPLICITLY WARRANTS THE ACCURACY OR COMPLETENESS OF SAID DOCUMENTS.

EXCEPT AS MAY BE CERTIFIED OTHERWISE IN WRITING BY THE ENGINEER, ONLY THE REPRODUCIBLE HARD COPY BEARING THE ENGINEER'S SEAL AND ORIGINAL SIGNATURE SHALL CONSTITUTE THE ORIGINAL OF THIS DRAWING.

THIS DRAWING IS NOT TO BE SCALED. OBTAIN ACCURATE DIMENSIONS FROM ARCHITECTURAL DRAWINGS OR SITE MEASUREMENTS.



1 MAIN FLOOR EXISTING LIFE SAFETY  
 E4 1 : 50



2 MAIN FLOOR NEW LIFE SAFETY  
 E4 1 : 50

**NOTES:**  
 1. WHERE NEW CEILING IS INSTALLED RE-INSTALL EXISTING SMOKE DETECTORS ON NEW CEILING.  
 2. NEW SMOKE DETECTORS TO MATCH EXISTING.  
 3. ALL FIRE ALARM PULL STATIONS SHALL BE LOWERED TO 1400mm.

FIRE ALARM LEGEND	
	MANUAL PULL STATION
	SMOKE DETECTOR
	HEAT DETECTOR
	FIRE ALARM PANEL
	FIRE ALARM ANNUNCIATOR

**NOTE:**  
 FIRE ALARM SYSTEM SHALL BE RE-CERTIFIED

Rev	Description	Date
2	Re-issued For Tender	Sept. 25 2017
1	Issued For 90% Review	May 25 2017
0	Issued For Permit and Pricing	Jan. 27 2017



PROJECT:  
**HARRY HACHEY  
 CONFERENCE  
 CENTER**

ST. ANDREWS, NB  
 DRAWING TITLE:  
**LIFE SAFETY &  
 FIRE ALARM**

DRAWN: JDB FILE NO: 12225

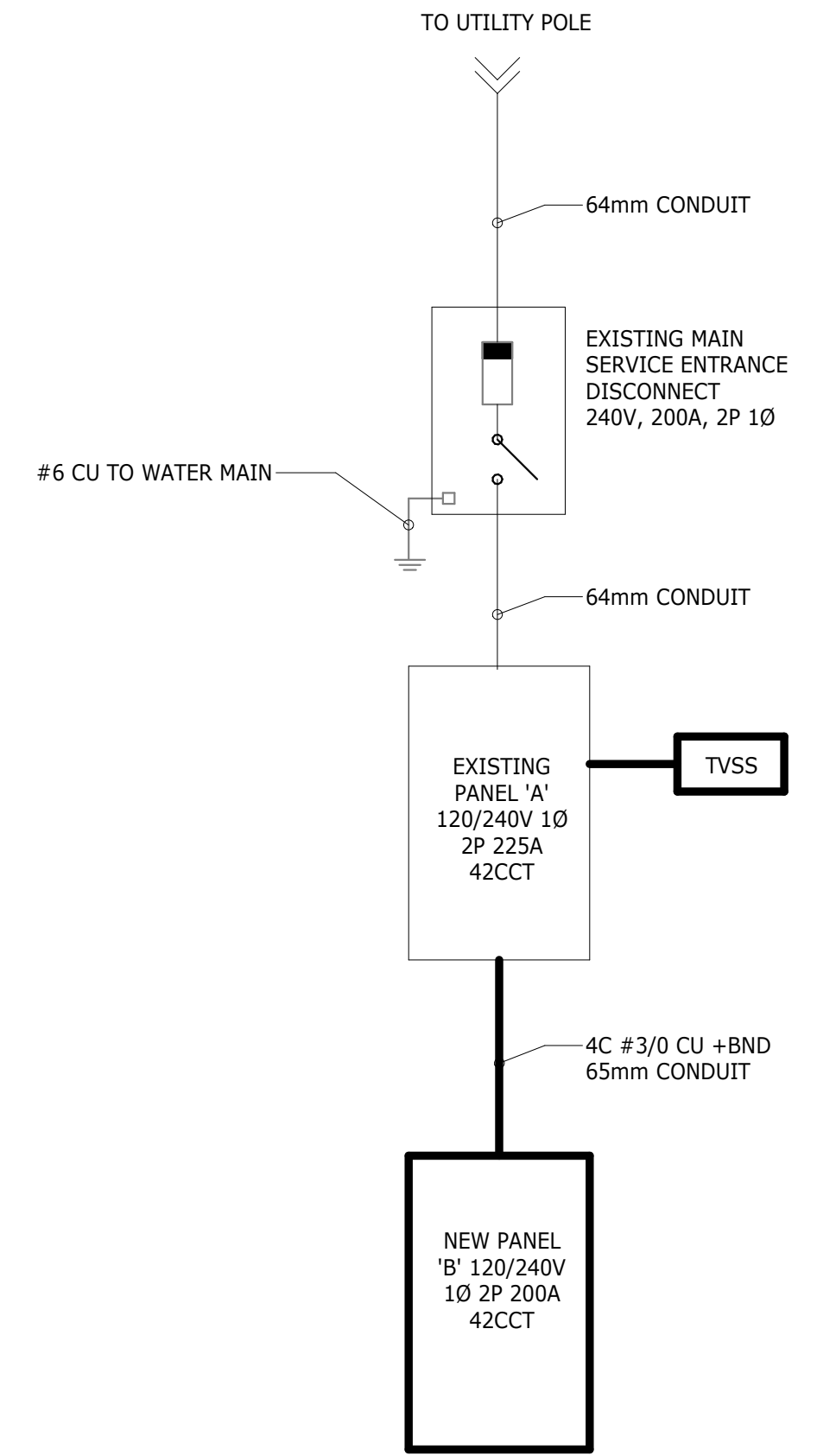
DWG:  
**E4**

Panel ID: EXISTING PANEL 'A'				Panel Totals					
Location: BASEMENT		Supply From: MAIN DISC.		Total Phase A: 10103 W		Total Phase B: 7840 W			
Mounting: Surface		Enclosure: Type 1		Total Phase C: 0 W		Total Conn. Load: 17943 W			
Volts: 120/240 Single		A.I.C. Rating: 3		Phases: 1		Wires: 3			
Mains Rating: 200 A		Panel To be CW: Label ID and Directory (Typed)		Total Conn. Load: 17943 W		Amps: 75 A			
Main Type: MLO									
CCT	Circuit Description	Trip	Poles	A	B	Poles	Trip	Circuit Description	CCT
A-1	LIGHTING ENTRANCE	15 A	1	128 W	540 W		1	RECEPTACLES BASEMENT	A-2
A-3					540 W		1	EXISTING CORRIDOR RECEPTACLES	A-4
A-5				350 W			1	HRV-2 BASEMENT	A-6
A-7									A-8
A-9									A-10
A-11									A-12
A-13	PANEL 'B'	200 A	2	5495 W					A-14
A-15	--	--	--		4360 W				A-16
A-17									A-18
A-19				450 W					A-20
A-21	BLR-1	20 A	1		600 W	90 W	1	LIGHTING OFFICE 107	A-22
A-23	LIGHTING BASE BUILDING...	15 A	1	600 W			1	LIGHTING KITCHEN 105	A-24
A-25									A-26
A-27	LIGHTING QUIET ROOM 104	15 A	1	90 W					A-28
A-29									A-30
A-31									A-32
A-33									A-34
A-35									A-36
A-37	TVSS	20 A	2		0 W	2250 W	1	FIRE ALARM PANEL	A-38
A-39									A-40
A-41	--	--	--	0 W	2250 W		--		A-42
				<b>Total Load:</b>	10103 W	7840 W			

Notes:

Panel ID: NEW PANEL 'B'				Panel Totals					
Location: BASEMENT		Supply From: EXISTING PANEL 'A'		Total Phase A: 5495 W		Total Phase B: 4360 W			
Mounting: Surface		Enclosure: Type 1		Total Phase C: 0 W		Total Conn. Load: 9855 W			
Volts: 120/240 Single		A.I.C. Rating: 3		Phases: 1		Wires: 3			
Mains Rating: 200 A		Panel To be CW: Label ID and Directory (Typed)		Total Conn. Load: 9855 W		Amps: 41 A			
Main Type: MLO									
CCT	Circuit Description	Trip	Poles	A	B	Poles	Trip	Circuit Description	CCT
B-1				525 W			1	LIGHTING WASHROOMS	B-2
B-3					300 W		1	NEW EMERGENCY LIGHTING	B-4
B-5	RECEPTACLES OFFICE 107	15 A	1	180 W	360 W		1	RECEPTACLES OFFICE 107	B-6
B-7	EQUIPMENT 106 PRINTER	20 A	1		400 W	800 W	1	RECEPTACLES EQUIPMENT 106	B-8
B-9	RECEPTACLES EQUIPMENT 106	15 A	1	360 W	500 W		1	FRIDGE KITCHEN 105	B-10
B-11	RECEPTACLES KITCHEN 105	15 A	1		360 W	180 W	1	EXHAUST FAN KITCHEN 105	B-12
B-13	RECEPTACLES COUNTER KITCHEN 105	20 A	1	180 W	1200 W		1	MIRCOWAVE RECEPTACLE KITCHEN...	B-14
B-15	RECEPTACLES COUNTER KITCHEN 105	20 A	1		500 W	540 W	1	RECEPTACLES QUIET ROOM	B-16
B-17	WASHROOMS RECEPTACLES	15 A	1	720 W	540 W		1	Mech Circ Pumps In WR's	B-18
B-19									B-20
B-21									B-22
B-23									B-24
B-25									B-26
B-27	Heating ENTRY 101	20 A	2		750 W				B-28
B-29	--	--	--	750 W					B-30
B-31	HEATING SINGLE POINT CIRC PUMPS	15 A	1		180 W	350 W	1	HRV-1	B-32
B-33	SUMP PUMP SP-1	15 A	1	180 W					B-34
B-35	Spare	15 A	1		0 W	0 W	1	Spare	B-36
B-37	Spare	15 A	1	0 W	0 W		1	Spare	B-38
B-39	Spare	15 A	1		0 W	0 W	1	Spare	B-40
B-41	Spare	15 A	1	0 W	0 W		1	Spare	B-42
				<b>Total Load:</b>	5495 W	4360 W			

Notes:



**NOTES:**  
 1. NAMING OF EXISTING PANEL(S) IS FOR REFERENCE.  
 2. SEE PANEL SCHEDULES FOR A COMPLETE LIST OF ALL ASSOCIATED PANEL LOADS.  
 3. NEW PANEL 'B' FED FROM PANEL 'A' SHALL FEED ALL NEW ELECTRICAL LOADS.

**ELECTRICAL DIAGRAM LINE LEGEND:**  
 EXISTING TO REMAIN: \_\_\_\_\_  
 DEMOLISHED ELECTRICAL: - - - - -  
 NEW ELECTRICAL: \_\_\_\_\_

1  
ES  
EXISTING ELECTRICAL SINGLE LINE  
NTS

Mechanical Equipment Schedule						
Mechanical ID	Voltage	Electrical Load	Circuit Number	Panel	Phase Created	Wire Size (H,N,G)
BLR-1	120 V	600 W	A-23	EXISTING PANEL 'A'	Existing	1-#12, 1-#12, 1-#12
EF-1	120 V	180 W	A-22	EXISTING PANEL 'A'	New Construction	1-#12, 1-#12, 1-#12
EF-2	120 V	180 W	B-12	NEW PANEL 'B'	New Construction	1-#12, 1-#12, 1-#12
EF-3	120 V	180 W	B-2	NEW PANEL 'B'	New Construction	1-#12, 1-#12, 1-#12
EF-4	120 V	180 W	B-2	NEW PANEL 'B'	New Construction	1-#12, 1-#12, 1-#12
HRV-1	120 V	350 W	B-32	NEW PANEL 'B'	New Construction	1-#12, 1-#12, 1-#12
HRV-2	120 V	350 W	A-6	EXISTING PANEL 'A'	New Construction	1-#12, 1-#12, 1-#12
HWT-1	240 V	4500 W	A-40,42	EXISTING PANEL 'A'	Existing	2-#10, 1-#10, 1-#10
P-1	120 V	180 W	B-18	NEW PANEL 'B'	New Construction	1-#12, 1-#12, 1-#12
P-2	120 V	180 W	B-18	NEW PANEL 'B'	New Construction	1-#12, 1-#12, 1-#12
P-3	120 V	180 W	B-18	NEW PANEL 'B'	New Construction	1-#12, 1-#12, 1-#12
P-12	120 V	180 W	B-31	NEW PANEL 'B'	New Construction	1-#12, 1-#12, 1-#12

ARCHITECT:  
 63 Fitzroy Street  
 Charlottetown, PE  
 Canada C1A 1R4  
 Ph: 902-566-4449  
 Fax: 902-566-1235  
 architects@bghj.com  
 Web: www.bghj.com

DESIGN CONSULTANT:  
**FUNDY Engineering**  
 27 Wellington Row  
 P.O. Box 9028  
 Saint John, NB  
 E2C 4E1  
 Tel: (506) 635-1566  
 Fax: (506) 635-0206  
 fundy@fundyeng.com  
 823-451  
 Keeping Our Clients' Needs First

THIS DRAWING IS PROVIDED TO REFLECT THE GENERAL EXTENT OF WORK AND AS SUCH DOES NOT NECESSARILY INDICATE THE ENTIRE SCOPE OF WORK. THIS DRAWING IS TO BE READ IN CONJUNCTION WITH RELATED ARCHITECTURAL, STRUCTURAL, ELECTRICAL AND/OR MECHANICAL DRAWINGS, DETAILS, SPECIFICATIONS, TENDER AND/OR OTHER CONTRACT DOCUMENTS, AS APPLICABLE.

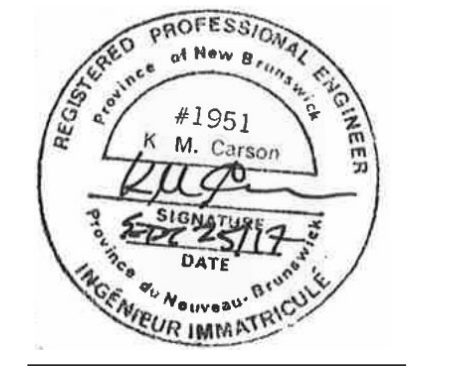
THIS DRAWING AND ITS RELATED DESIGNS, CALCULATIONS AND SPECIFICATIONS ARE INSTRUMENTS OF PROFESSIONAL SERVICE FOR THE EXECUTION OF THE WORK ON THIS PROJECT ONLY. THIS DRAWING SHALL NOT BE USED FOR ANY OTHER PROJECT WITHOUT THE EXPRESS WRITTEN CONSENT OF THE ENGINEER. THE ENGINEER ACCEPTS NO RESPONSIBILITY FOR LOSSES, DAMAGES OR COSTS ARISING OUT OF ANY USE OR REUSE OF THIS DRAWING NOT SPECIFICALLY AUTHORIZED BY THE ENGINEER IN WRITING.

"RECORD" OR "AS-BUILT" VERSIONS OF THIS DRAWING ARE BASED ON INFORMATION PROVIDED BY OTHERS AND THE ENGINEER NEITHER EXPRESSLY NOR IMPLICITLY WARRANTS THE ACCURACY OR COMPLETENESS OF SAID DOCUMENTS.

EXCEPT AS MAY BE CERTIFIED OTHERWISE IN WRITING BY THE ENGINEER, ONLY THE REPRODUCIBLE HARD COPY BEARING THE ENGINEER'S SEAL AND ORIGINAL SIGNATURE SHALL CONSTITUTE THE ORIGINAL OF THIS DRAWING.

THIS DRAWING IS NOT TO BE SCALED. OBTAIN ACCURATE DIMENSIONS FROM ARCHITECTURAL DRAWINGS OR SITE MEASUREMENTS.

Rev.	Description	Date
2	Re-issued For Tender	Sept. 25 2017
1	Issued For 90% Review	May 25 2017
0	Issued For Permit and Pricing	Jan. 27 2017



PROJECT:  
**HARRY HACHEY  
 CONFERENCE  
 CENTER**

ST. ANDREWS, NB  
 DRAWING TITLE:  
**PANEL  
 SCHEDULES &  
 DETAILS**

DRAWN: JDB  
 FILE NO: 12225

DWG:  
**E5**