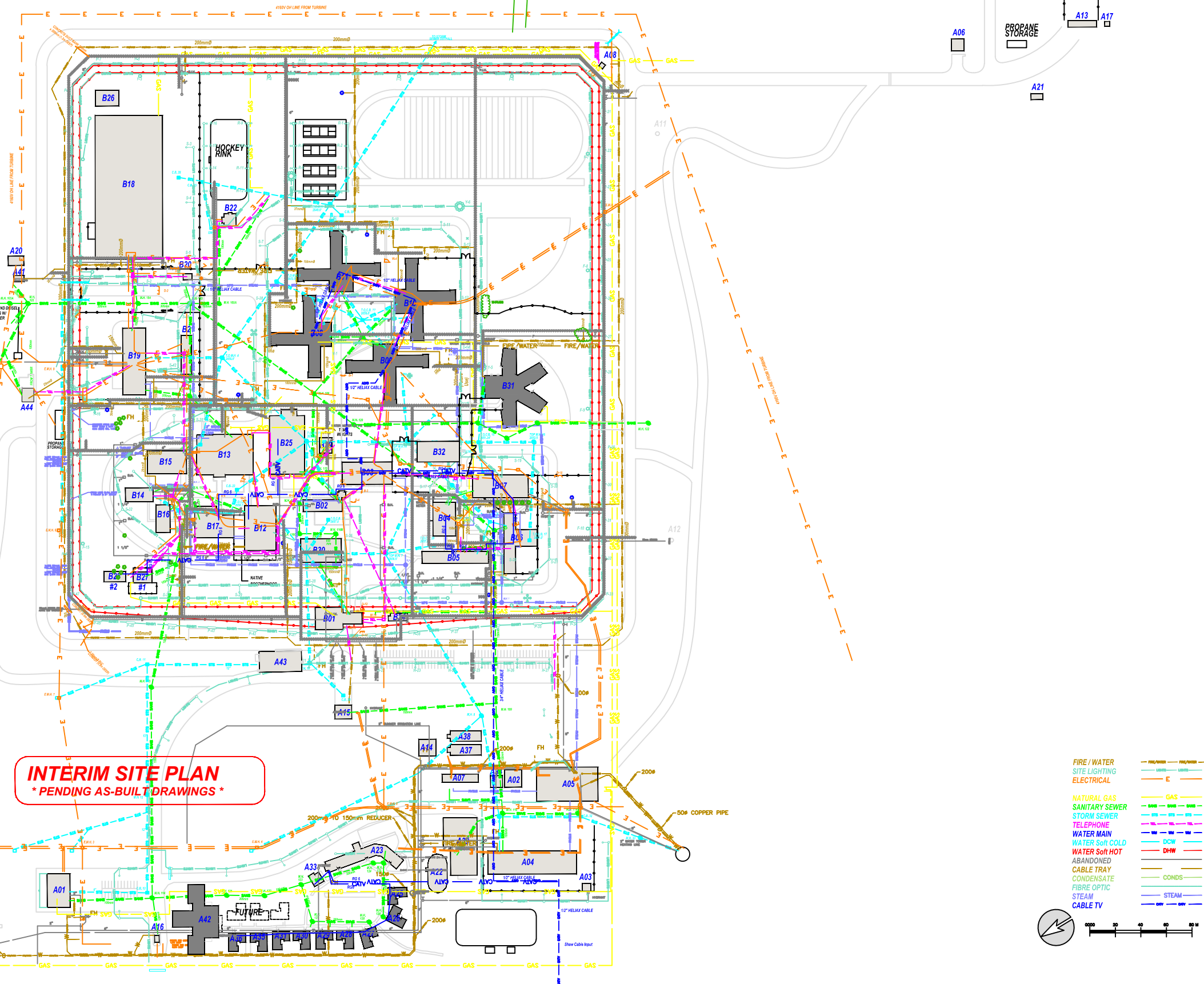




- BUILDINGS**
- A-01 ADMINISTRATION
 - A-02 FIRE HALL
 - A-03 STORAGE
 - A-04 STORES
 - A-05 CENTRAL HEATING PLANT
 - A-06 STORAGE
 - A-07 OLD GREENHOUSE
 - A-08 GUARD TOWER T3
 - A-09 GUARD TOWER T1
 - A-10 GUARD TOWER #2 (REMOVED)
 - A-11 GUARD TOWER #3 (REMOVED)
 - A-12 GUARD TOWER #4 (REMOVED)
 - A-13 RIFLE RANGE
 - A-14 GREENHOUSE STORAGE
 - A-15 ARMOURY
 - A-16 CHECKPOINT CHARLIE
 - A-17 GAS HUT
 - A-18 STAFF TRAINING CENTRE (DEMOLISHED)
 - A-19 PWC TRAILER (DEMOLISHED)
 - A-20 HAZARDOUS STORAGE
 - A-21 SMOKE HOUSE
 - A-22 SPRUNG STRUCTURE
 - A-23 ANNEX ADMINISTRATION
 - A-24 GARAGE
 - A-25 ANNEX HOUSE A-1
 - A-26 ANNEX HOUSE B-1
 - A-27 ANNEX HOUSE C-3
 - A-28 ANNEX HOUSE D-4
 - A-29 ANNEX HOUSE E-5
 - A-30 ANNEX HOUSE F-6
 - A-31 ANNEX HOUSE G-7
 - A-32 COMPOSTER BUILDING
 - A-33 PFV- ANNEX
 - A-34 HOBBY SHOP
 - A-35 ANNEX HOUSE H-8
 - A-36 ANNEX HOUSE I-9
 - A-37 GREENHOUSE
 - A-38 GREENHOUSE
 - A-39 MULTI-PURPOSE BUILDING
 - A-40 SILVER STORAGE BUILDING
 - A-41 STORAGE
 - A-42 50 BED LIVING UNIT
 - A-43 GO BUILDING
 - A-44 GENERATOR BUILDING
 - A-45 STORAGE BUILDING
 - B-01 MAIN GATE
 - B-02 STAFF LOUNGE
 - B-03 ADMINISTRATION
 - B-04 INTAKE ASSESSMENT UNIT
 - B-05 DISSOCIATION
 - B-06 A AND D
 - B-07 HEALTH CARE INTAKE UNIT
 - B-08 LIVING UNITS #8
 - B-09 LIVING UNITS #9
 - B-10 LIVING UNITS #10
 - B-11 LIVING UNITS #11
 - B-12 NATIVE CULTURAL CENTRE
 - B-13 KITCHEN
 - B-14 CATHOLIC CHAPEL
 - B-15 S.I.S.
 - B-16 PROTESTANT CHAPEL
 - B-17 SCHOOL
 - B-18 CORCAN
 - B-19 MAINTENANCE BUILDING
 - B-20 SALLY PORT
 - B-21 MAINTENANCE STORAGE
 - B-22 FIELDHOUSE SLAB ELECT-SUB
 - B-23 CURLING RINK (DEMOLISHED)
 - B-24 MCCP
 - B-25 GYMNASIUM
 - B-26 INDUSTRIES STORAGE
 - B-27 FAMILY VISITING #1 (S)
 - B-28 FAMILY VISITING #2 (N)
 - B-29 INMATE CANTEEN (DEMOLISHED)
 - B-30 PROGRAM/ADMIN BUILDING
 - B-31 LIVING UNIT
 - B-32 GI BUILDING

INTERIM SITE PLAN
* PENDING AS-BUILT DRAWINGS *

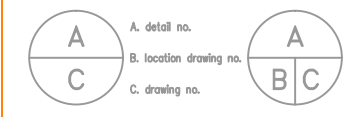


INTERIM SITE PLAN
* PENDING AS-BUILT DRAWINGS *

LEGEND

- FIRE / WATER: Solid red line
- SITE LIGHTING: Dashed red line
- ELECTRICAL: Solid blue line
- NATURAL GAS: Solid yellow line
- SANITARY SEWER: Solid green line
- STORM SEWER: Dashed green line
- TELEPHONE: Solid purple line
- WATER MAIN: Solid cyan line
- WATER Soft COLD: Solid light blue line
- WATER Soft HOT: Solid dark blue line
- ABANDONED: Dashed black line
- CABLE TRAY: Solid black line
- CONDENSATE: Solid light green line
- FIBRE OPTIC: Solid dark green line
- STEAM: Solid orange line
- CABLE TV: Solid brown line

SITE UTILITIES

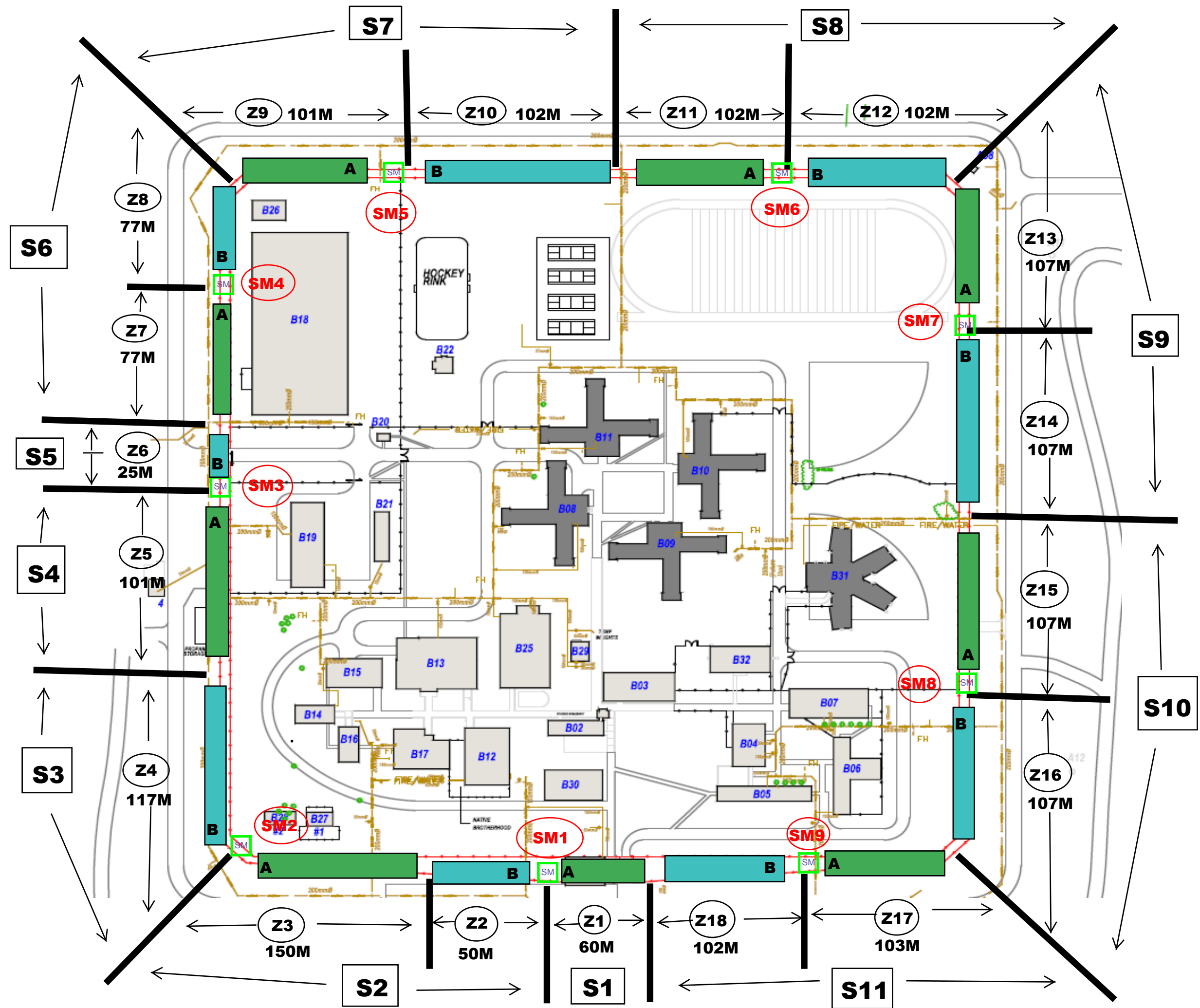


INSTITUTION
DRUMHELLER INSTITUTION
DRUMHELLER, AB


DESCRIPTION
SITE UTILITIES

SCALE
1:3500

LAST UPDATE

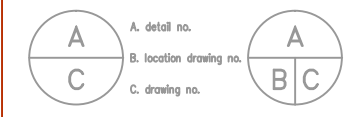


NOTES:

 = Sensor Module

S = SECTOR

Z = ZONES



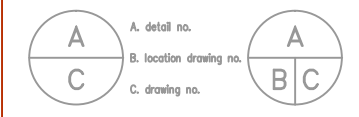
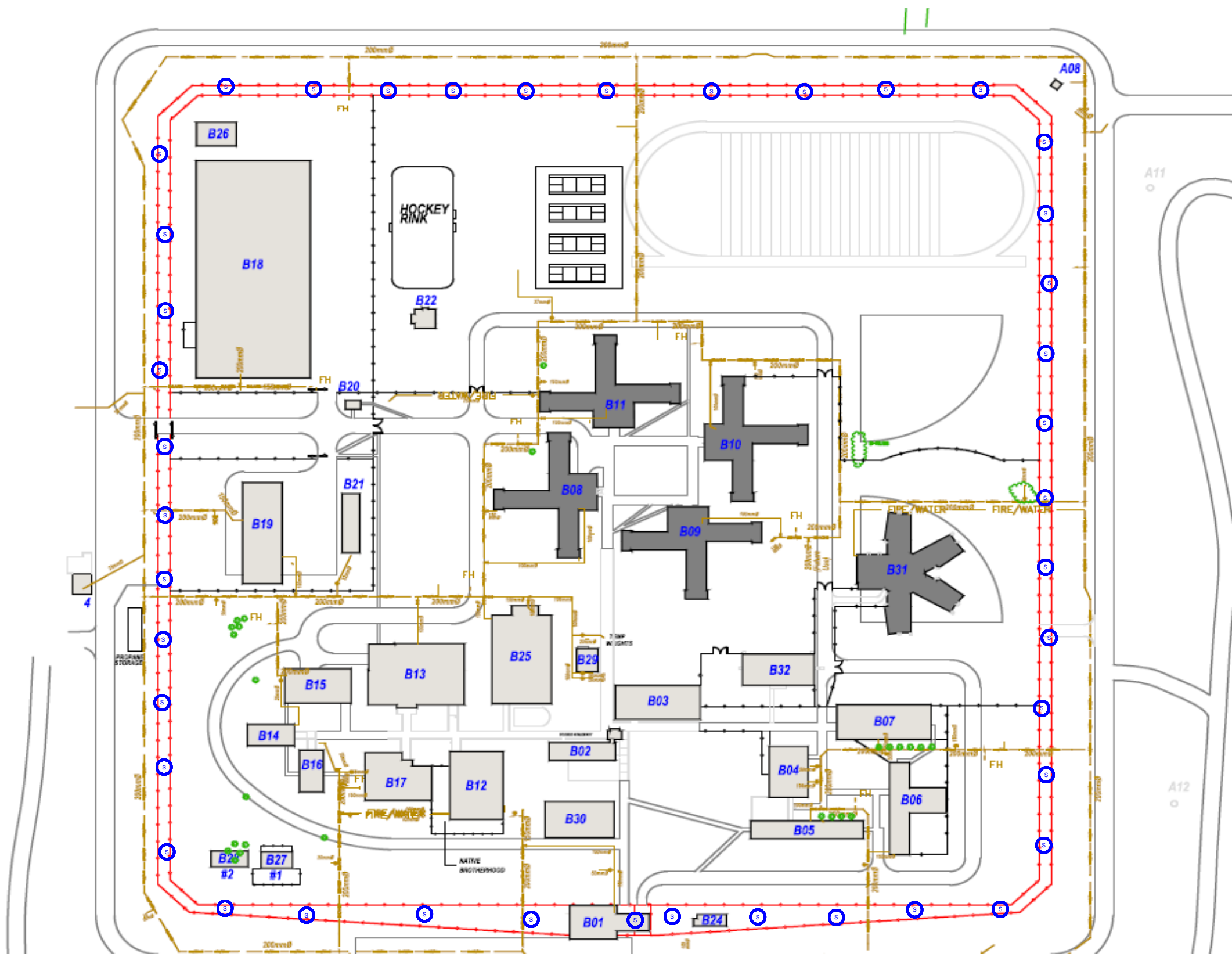
INSTITUTION
 DRUMHELLER INSTITUTION
 DRUMHELLER, AB

DESCRIPTION
 OVERALL SITE PLAN
PIDS MDS

ES02

NOTES:

S = PIDS Speaker



INSTITUTION
 DRUMHELLER INSTITUTION
 DRUMHELLER, AB

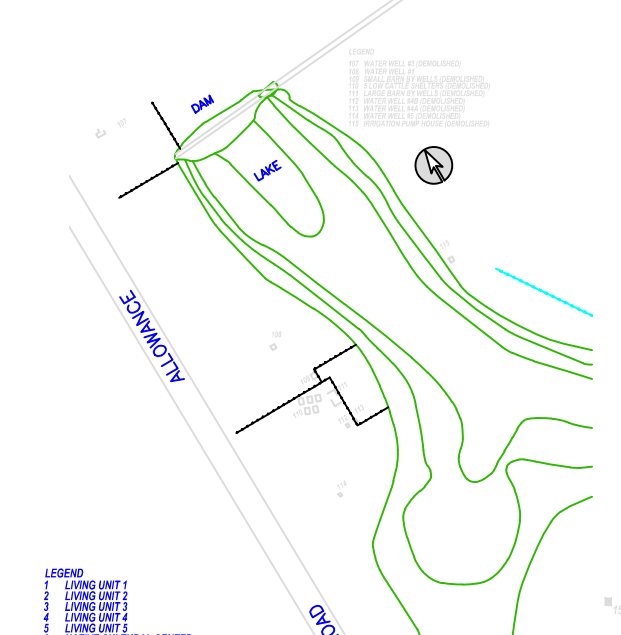
DESCRIPTION
 OVERALL SITE PLAN

PIDS PA

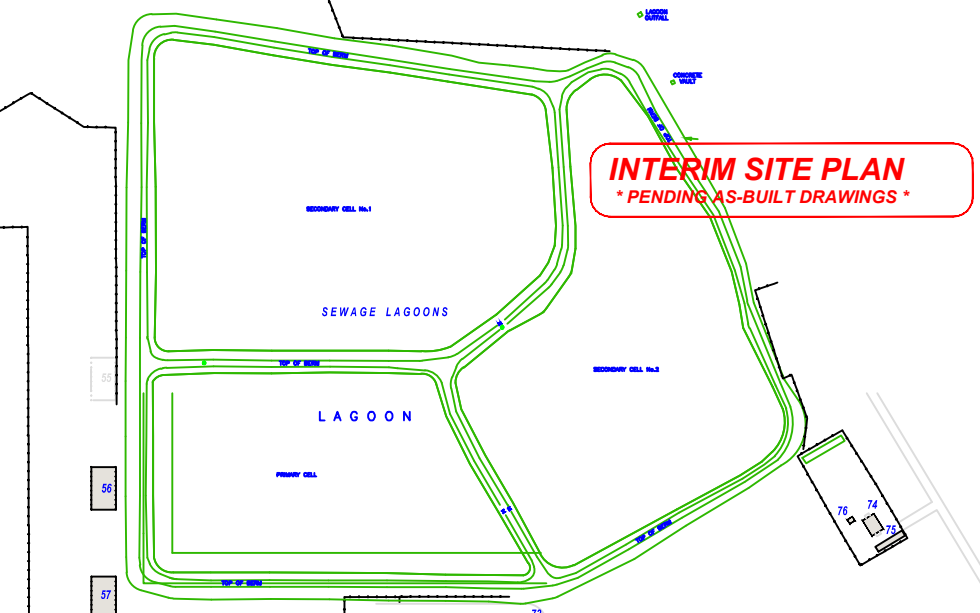
ES03



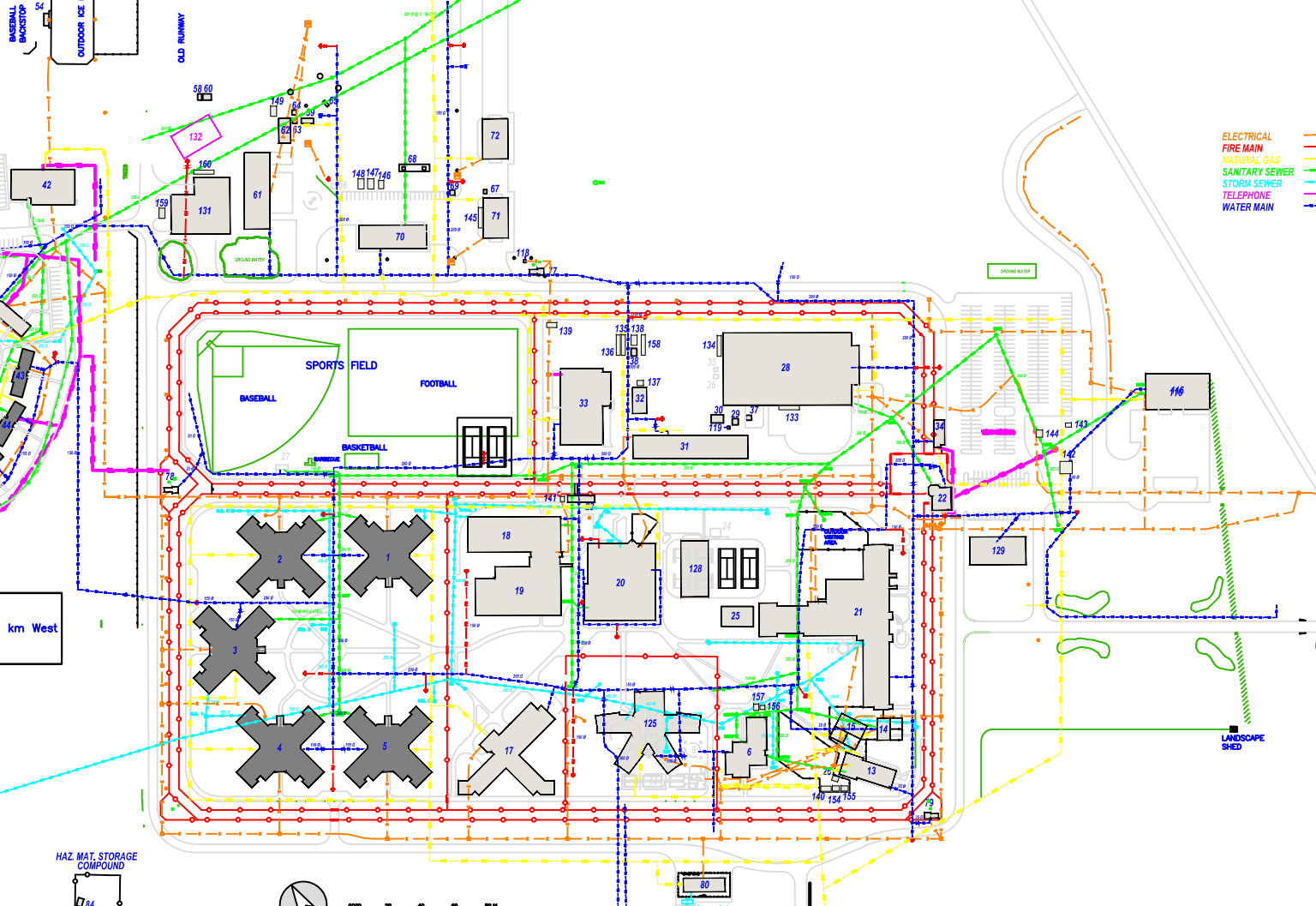
WATER WELL AREA
SCALE 1:6000



INTERIM SITE PLAN
* PENDING AS-BUILT DRAWINGS *



- LEGEND**
- 1 LIVING UNIT 1
 - 2 LIVING UNIT 2
 - 3 LIVING UNIT 3
 - 4 LIVING UNIT 4
 - 5 LIVING UNIT 5
 - 6 NATIVE CULTURAL CENTER
 - 7 WATER RESERVOIR (DEMOLISHED)
 - 8 WATER RESERVOIR (DEMOLISHED)
 - 9 WATER RESERVOIR (DEMOLISHED)
 - 10 STORAGE SHED UNDER WATER TOWER
 - 11 GREENHOUSE
 - 12 CHURCH
 - 13 CHAPEL
 - 14 PRIVATE FAMILY VISITS UNIT #1,2
 - 15 PRIVATE FAMILY VISITS UNIT #3,4
 - 16
 - 17 DISSOCIATION/SEGREGATION HEALTH
 - 18 GYMNASIUM
 - 19 RECREATION AND HOBBY SHOP
 - 20 KITCHEN AND DINING HALL
 - 21 ADMINISTRATION BUILDING
 - 22 GATE HOUSE
 - 23 CHECK POINT CHARLIE
 - 24
 - 25 INMATE SMOKING AREA
 - 26 NATIVE SACRED GROUND STORAGE SHED
 - 27
 - 28 CORCAN INDUSTRIES
 - 29 MAINTENANCE FLAMMABLE STORES
 - 30 MAINTENANCE STORAGE
 - 31 MAINTENANCE
 - 32 MAINTENANCE STORAGE BUILDING
 - 33 LAUNDRY/DATAQUICK
 - 34 MCCP
 - 35 RECYCLING SHED #1 (DEMOLISHED)
 - 36 RECYCLING SHED #2 (DEMOLISHED)
 - 37 CORCAN STORAGE SHED
 - 38 LAWNMOWER, LANDSCAPING STORAGE
 - 39 ANNEX KITCHEN AND ADMINISTRATION BUILDING
 - 40 ANNEX ACTIVITY BUILDING
 - 41 ANNEX RECREATIONAL BUILDING
 - 42 ANNEX PRIVATE FAMILY VISITS
 - 43 ANNEX LIVING UNIT #1
 - 44 ANNEX LIVING UNIT #2
 - 45 ANNEX LIVING UNIT #3
 - 46 ANNEX LIVING UNIT #4
 - 47 ANNEX LIVING UNIT #5
 - 48 ANNEX LIVING UNIT #6
 - 49 ANNEX LIVING UNIT #7
 - 50 ANNEX LIVING UNIT #8
 - 51 ANNEX GARDENING STORAGE
 - 52 ANNEX NATIVE GROUNDS BUILDING
 - 53 ANNEX NATIVE GROUNDS STORAGE BUILDING
 - 54 ANNEX ATCO TRAILER- HOCKEY RINK
 - 55
 - 56 MIDDLE HAY BARN
 - 57 SOUTH HAY BARN
 - 58 PUBLIC WORKS STORAGE
 - 59 PUBLIC WORKS TRAILER
 - 60 PUBLIC WORKS TOOL SHED
 - 61 ANNEX CORCAN WAREHOUSE
 - 62 ANNEX MAINTENANCE BUILDING
 - 63 ANNEX MAINTENANCE SHED #1
 - 64 ANNEX MAINTENANCE SHED #2
 - 65 PROPANE STORAGE
 - 66
 - 67 ANNEX FUEL MAN SHELTER
 - 68 GAS AND DIESEL FUEL DISPENSER
 - 69 AGR-CENTRE ACTIVITY STORAGE SHED
 - 70 AGR-BUSINESS CENTRE
 - 71 AGR-CENTRE MACHINERY STORAGE SHED#1
 - 72 AGR-CENTRE MACHINERY STORAGE SHED#2
 - 73 SEWAGE DISPOSAL PLANT
 - 74 SHOOTING RANGE OFFICE
 - 75 SMOKE HOUSE
 - 76 SHOOTING RANGE STORAGE SHED
 - 77 NORTH SECURITY TOWER
 - 78 WEST SECURITY TOWER
 - 79 SOUTHEAST SECURITY TOWER
 - 80 ELECTRICAL SUB STATION
 - 81
 - 82 LOW SHED (DEMOLISHED)
 - 83
 - 84 HAZARDOUS WASTE STORAGE
 - 85 COMPOST BUILDING
 - 86 CONCRETE SILAGE PIT (COW CALF)
 - 87
 - 88 CATTLE OPERATION STORAGE
 - 89 GRANARY
 - 90 GRANARY
 - 91 FEED STORAGE
 - 92 CATTLE OPERATION HAY BARN
 - 93 OPEN FEEDING STATION FOR PEN #1
 - 94 OPEN FEEDING STATION FOR PEN #2, 3
 - 95 OPEN FEEDING STATION FOR PEN #4
 - 96 OPEN FEEDING STATION FOR PEN #5
 - 97 OPEN FEEDING STATION FOR PEN #6
 - 98 OPEN FEEDING STATION FOR PEN #7
 - 99 OPEN FEEDING STATION FOR PEN #8 (DEMOLISHED)
 - 100 OPEN FEEDING STATION FOR PEN #9, 10 (DEMOLISHED)
 - 101 OPEN FEEDING STATION FOR PEN #11, 12 (DEMOLISHED)
 - 102 OPEN FEEDING STATION (COW CALF) (DEMOLISHED)
 - 103 CALVING BARN AND VET AREA
 - 104
 - 105 NATURAL GAS STATION
 - 106 FEEL SHED (DEMOLISHED)
 - 107
 - 108 STORES
 - 109 ANTHONY HENDAY SUBSTATION
 - 110 ANNEX USED OIL RECOVERY STATION
 - 111 MAINTENANCE USED OIL RECOVERY STATION
 - 112 ANNEX HOUSING 9
 - 113 ANNEX HOUSING 10
 - 114 ANNEX HOUSING 11
 - 115 ANNEX HOUSING 12
 - 116 ANNEX HOUSING 13
 - 117 56 BED INTAKE UNIT
 - 118 ANNEX PPV NORTH
 - 119 ANNEX ADMIN BUILDING NORTH
 - 120 PROGRAMS BUILDING
 - 121 EAST POINT
 - 122 POTABLE WATER BUILDING
 - 123 PRODUCTION KITCHEN
 - 124 GREEN HOUSE
 - 125
 - 126
 - 127
 - 128
 - 129
 - 130
 - 131
 - 132
 - 133 SEA CAN STORAGE - CORCAN
 - 134 SEA CAN STORAGE - CORCAN
 - 135 SEA CAN STORAGE - Works & Eng.
 - 136 SEA CAN STORAGE - Works & Eng.
 - 137 STORAGE - Works & Eng.
 - 138 GARAGE - Aboriginal Initiatives
 - 139 WOOD STORAGE - Aboriginal Initiatives
 - 140 WOOD STORAGE - Aboriginal Initiatives
 - 141 STORAGE
 - 142 BBQ SHELTER
 - 143 BBQ STORAGE
 - 144 QUAD STORAGE GARAGE
 - 145 SEA CAN STORAGE - Works & Eng.
 - 146 STORAGE - Works & Eng.
 - 147 GARAGE - Works & Eng.
 - 148 GARAGE - PWSC & ADGA
 - 149 GARAGE - Works & Eng.
 - 150 SWEAT LODGE - Aboriginal Initiatives
 - 151 FIREWOOD STORAGE - Aboriginal Initiatives
 - 152 FIREWOOD STORAGE - Aboriginal Initiatives
 - 153 8 FORAGE - Aboriginal Initiatives



INTERIM SITE PLAN
* PENDING AS-BUILT DRAWINGS *

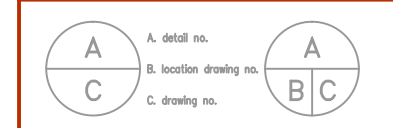
BOWDEN MEDIUM AND MINIMUM SECURITY AREAS

SCALE 1:4000

FARM OPERATION (CLOSED)
SCALE 1:4000



SITE UTILITIES



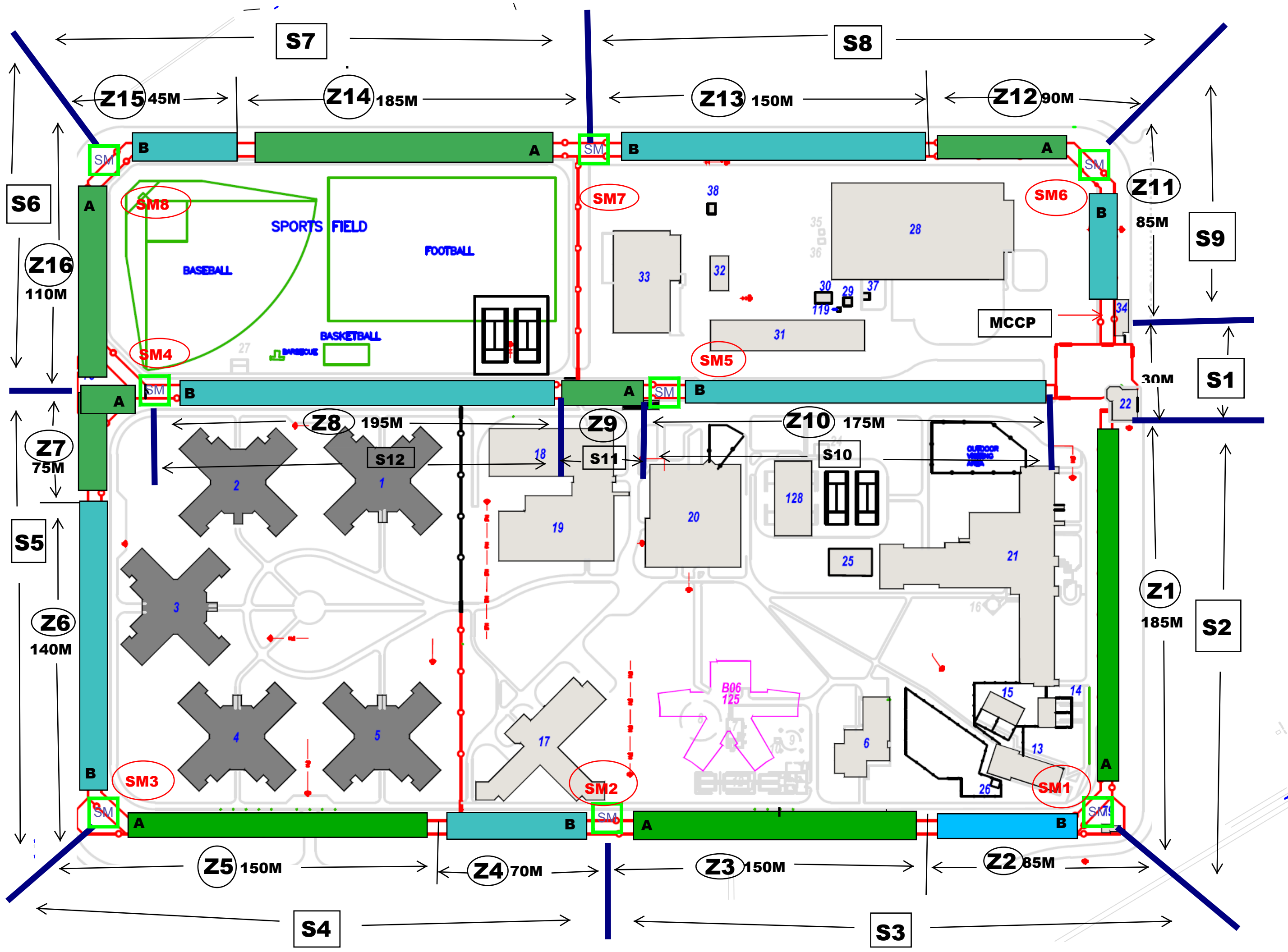
INSTITUTION
BOWDEN INSTITUTION
BOWDEN, AB

DESCRIPTION
SITE UTILITIES

SCALE _____

LAST UPDATE _____

ES04



NOTES:

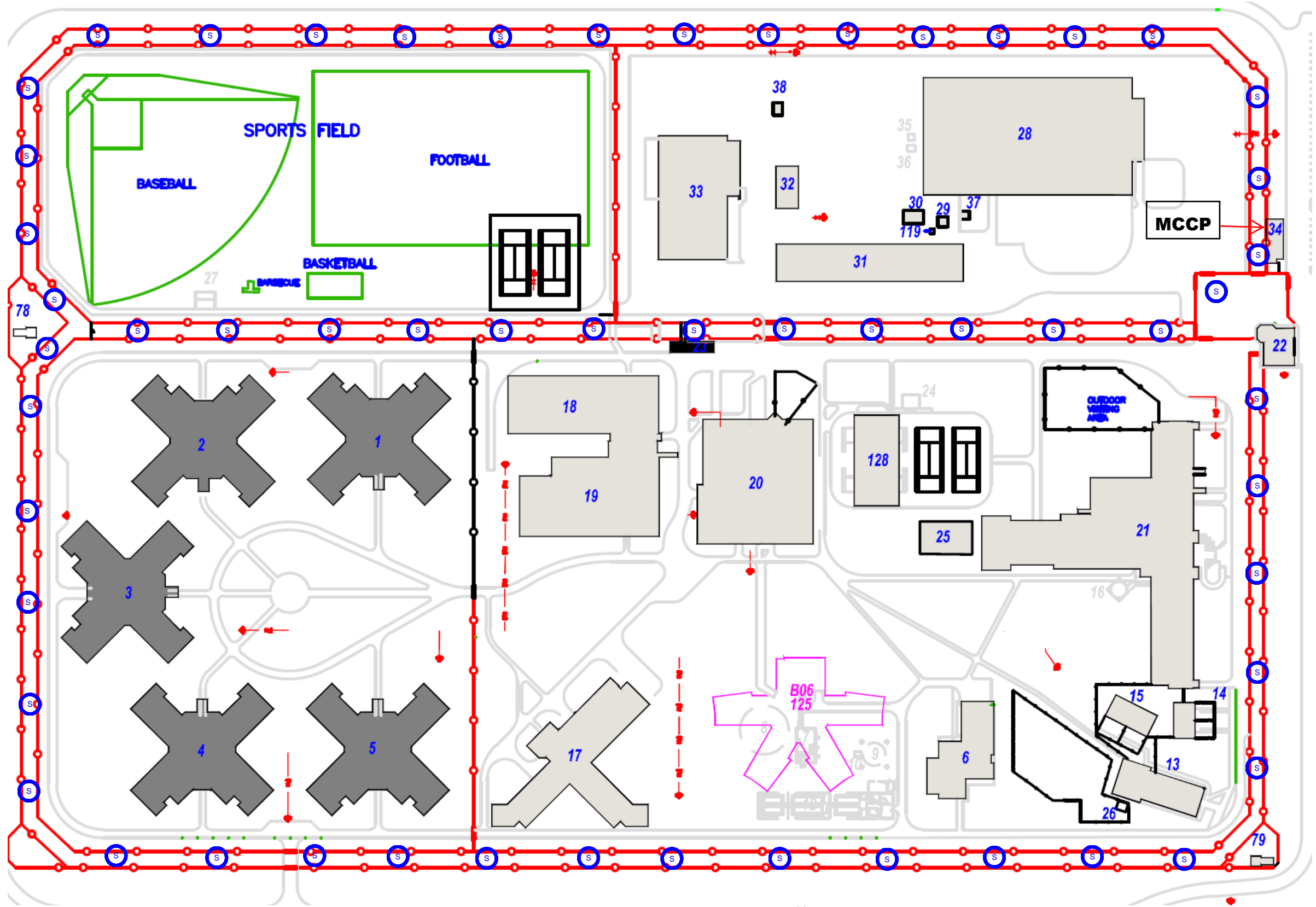
- SM = Sensor Module
- S** = SECTOR
- Z** = ZONE

A	A. detail no.	A
C	B. location drawing no.	B/C
	C. drawing no.	

BOWDEN INSTITUTION
BOWDEN, AB

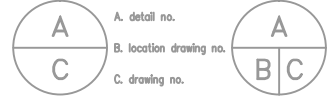
OVERALL SITE PLAN
PIDS MDS

ES05



NOTES:

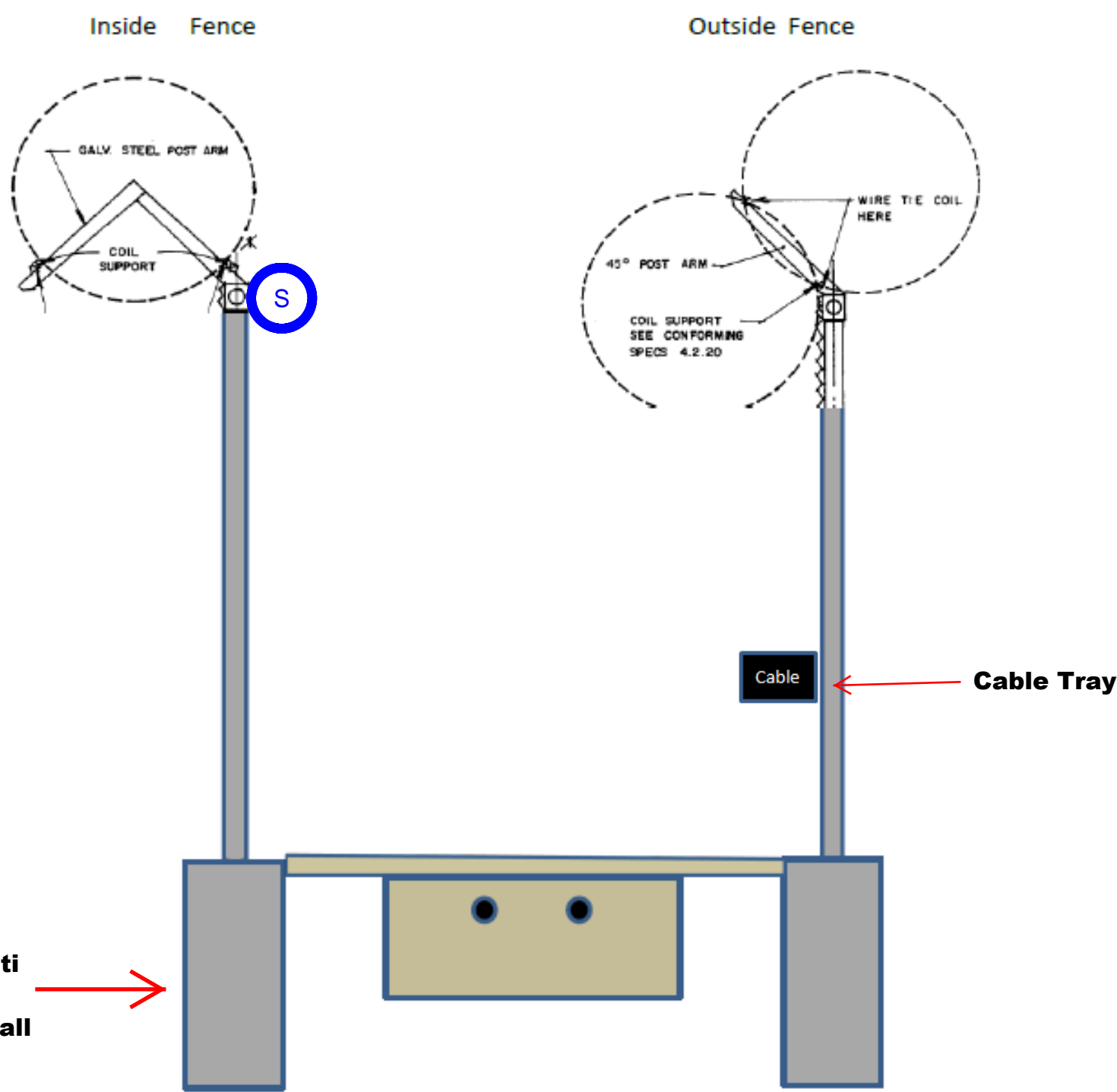
 = PIDS Speaker



BOWDEN INSTITUTION
 BOWDEN, AB

OVERALL SITE PLAN
PIDS PA

ES06



Note 1: Water shall be prevented from pooling and from forming ice between the perimeter fences, as this could affect the operation of the Movement Detection System (MDS). Special attention must be paid to sloped sites to assure that gaps do not develop between the ground surface and the lower fence rail. The area between the perimeter security fences shall be graded to a slope of 2% from the inner to the outer fence and treated with herbicide.

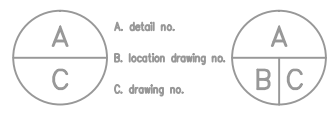
Note 2: The surface will be covered with three inches of crushed gravel installed over the sectors. The use of round river rock 1/2 to 1" is recommended. Apply the rock with a small dump truck and a bobcat, landscape fabric about 10' wide. After placement, the crushed stone will also be sprayed with herbicide to assure a sterile area between the fences.

Note 3: The area shall be stabilized to a compaction of 95% corrected maximum dry density to hinder run-off erosion and tunnelling by inmates. It is the contractors responsibility to verify compaction criteria with the MDS cable manufacturer to insure proper operation and protection from damage. The contractor shall provide installation detail as part of the bid package.

Note 4: Original cables were installed in a sand bed wrapped with a geo-textile fabric. The geo-textile layer keeps the protective sand cushion in place ensuring the life of the system and preventing erosion. The geo textile non-woven fabric used at these sites were Geo Synthetics p/n Amoco 4535. It is the contractor's responsibility to contact the manufacturer of the MDS cable with respect to the recommended fabric similar in product as per original specification. It is requested that sand be used as part of the installation process subject to the manufacturers specifications.

Sites Requirements

S = **Speaker**



Drumheller & Bowden Institutions

DESCRIPTION _____

SCALE _____

LAST UPDATE **ES07**