

CFIA-OTTAWA LABORATORY FALLOWFIELD A-WING WASHROOMS REFURBISHMENT 1st, 2nd, 3rd & 4th FLOOR

ISSUED FOR TENDER

MCROBIE
ARCHITECTS + INTERIOR DESIGNERS

DRAWING LIST:

ARCHITECTURAL:

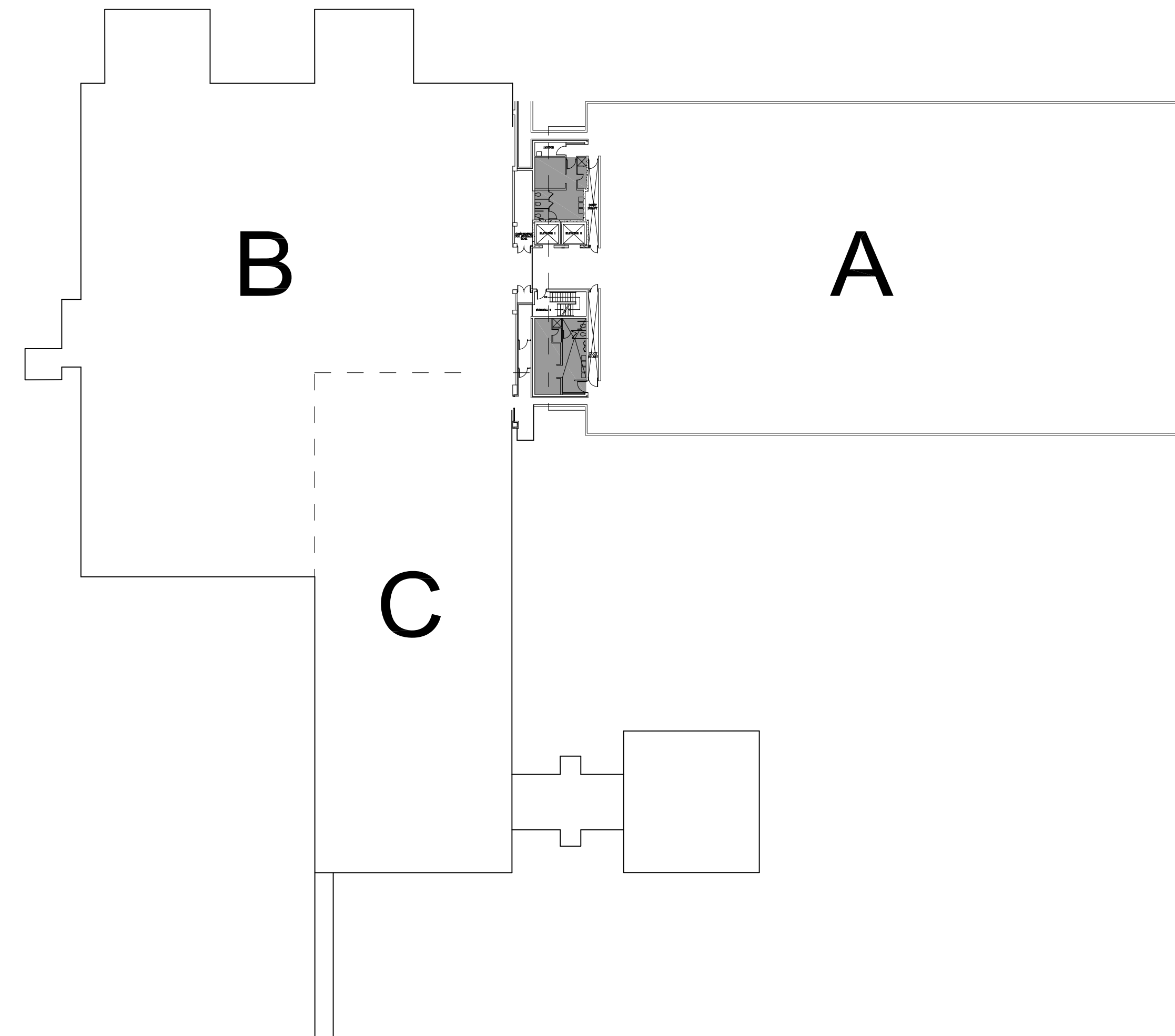
- A101 NOTES AND LEGEND, DEMOLITION, AND NEW CONSTRUCTION PLANS
- A102 WOMEN'S WASHROOM ELEVATIONS, WASHROOM ACCESSORIES LEGEND
- A103 MEN'S WASHROOM ELEVATIONS
- A104 MEN'S WASHROOM ELEVATION, DOOR SCHEDULE AND CODE REVIEW

MECHANICAL:

- M-1 MECHANICAL FIRST FLOOR WASHROOMS EXISTING AND NEW
- M-2 MECHANICAL SECOND FLOOR WASHROOMS EXISTING AND NEW
- M-3 MECHANICAL THIRD FLOOR WASHROOMS EXISTING AND NEW
- M-4 MECHANICAL FOURTH FLOOR WASHROOMS EXISTING AND NEW
- M-5 SPECIFICATIONS

ELECTRICAL:

- E-1 ELECTRICAL GENERAL NOTES, LEGEND AND SPECIFICATIONS
- E-2 ELECTRICAL FIRST FLOOR WASHROOMS EXISTING AND NEW
- E-3 ELECTRICAL SECOND FLOOR WASHROOMS EXISTING AND NEW
- E-4 ELECTRICAL THIRD FLOOR WASHROOMS EXISTING AND NEW
- E-5 ELECTRICAL FOURTH FLOOR WASHROOMS EXISTING AND NEW



14 FINISHES LEGEND
A101 SCALE: 1:50

WALL PAINT	BENJAMIN MOORE- DISTANT GRAY (2124-70)(WHITE)
WALL ACCENT PAINT	BENJAMIN MOORE- SWEET INNOCENCE (2125-50) (LIGHT BLUE GREY)
	BENJAMIN MOORE- NEW HOPE GRAY (2130-50) (BLUE)
	PRATT & LAMBERT PAINT- SHADOW BEIGE (11-288 / OLD#2257) (BEIGE/SAND)
TILES AND FINISHES	
FLOOR TILE: 305 X 610mm	SHOWER WALL TILE: 305 X 610mm
MAN: OLYMPIA	MAN: OLYMPIA
COLOR: BLUE MATTE (NY.RG.BLU.1224.MT)	COLOR: TAUPE (NY.RG. TPE. 1224.MT)
FINISH: MATTE	FINISH: MATTE
LOCATION: ALL FLOORS & CONCRETE BASES EXCEPT IN SHOWER	LOCATION: ALL WALLS & VERTICAL FACE OF CONCRETE BASES EXCEPT IN SHOWER
SHOWER FLOOR TILE: 302 X 271mm MAN: OLYMPIA	SHOWER WALL TILE: 305 X 610mm
STYLE: QUEBEC HEXAGON SERIES	MAN: OLYMPIA
COLOR: STERLING GRAY (OD.CO.STR.02.HEX)	COLOR: BLUE MATTE (NY.GR.BLU.424.MT)
FINISH: MATTE	FINISH: MATTE

12 NOTES/ LEGENDS
A101 SCALE: 1:50

NOTES:

- PROVIDE SHOP DRAWINGS FOR REVIEW AND APPROVAL FOR ALL ACCESSORIES AND FINISHES.
- PROVIDE PLYWOOD BLOCKING FOR ALL ACCESSORIES.

LEGEND:

ROOM NAME (T) PARTITION TYPE

ELEVATION REFERENCE

DOOR NUMBER WHERE T=01 FOR FIRST FLOOR T=02 FOR SECOND FLOOR T=03 FOR THIRD FLOOR T=04 FOR FOURTH FLOOR

ACOUSTIC CEILING TILES

11 DEMOLITION NOTES
A101 SCALE: N/A

01 REMOVE EXISTING FLOOR FINISHES, PREPARE EXISTING FLOOR SLAB FOR NEW CERAMIC FLOOR TILE FINISH.

02 REMOVE EXISTING FIXTURES, WASHROOM, SHOWERS, WALL MOUNTED BENCHES, ACCESSORIES, LOCKERS, MIRRORS, AND TOILET PARTITIONS.

03 REMOVE EXISTING CONCRETE CURB LOCKER BASE AS INDICATED, GRIND SMOOTH FLOORS AND PREPARE FOR CERAMIC FLOOR FINISH.

04 REMOVE EXISTING TILE FROM PARTITION TO REMAIN.

05 REMOVE TILE FINISH FROM EXISTING CONCRETE LOCKER BASES.

06 CHIP OFF EXISTING CONCRETE BLOCK WALL FOR NEW RECEPTACLE.

07 EXISTING HEATER TO REMAIN.

PARTITIONS TO BE REMOVED: ---

CONCRETE CURB BASE TO BE REMOVED: ---

10 PARTITIONS TYPES
A101 SCALE: N/A

P1: STEEL STUDS EXTENDING FROM FLOOR TO U/S OF STRUCTURE, FINISHES EXTENDING FROM FLOOR TO 100mm ABOVE FINISHED CEILING
15.9mm GYPSUM BOARD
64mm STEEL STUD @ 400 OC
EXISTING CONCRETE OR CONCRETE MASONRY UNIT WALL
22mm FURRING CHANNEL
15.9mm GYPSUM BOARD

P2: EXTENDING FROM FLOOR TO UNDERSIDE OF STRUCTURE*, SEE NOTE C7, FINISHES EXTENDING FROM FLOOR TO 100mm ABOVE FINISHED CEILING
15.9 MM TYPE 1 GYPSUM BOARD
92 MM STEEL STUDS AT 406 MM OC
15.9 MM TYPE 1 GYPSUM BOARD

P3: EXTENDING FROM FLOOR TO 100mm ABOVE FINISHED CEILING
15.9 mm GYPSUM BOARD
22 mm FURRING CHANNEL ON EXISTING CONCRETE OR CONCRETE MASONRY UNIT WALL

P3* : EXTENDING FROM TOP OF LOCKERS TO 100mm ABOVE FINISHED CEILING
15.9 mm GYPSUM BOARD
22 mm FURRING CHANNEL TO EXISTING CONCRETE OR CONCRETE MASONRY UNIT WALL

09 CONSTRUCTION NOTES AND GENERAL NOTES
A101 SCALE: N/A

C1 PROVIDE 1% SLOPE TO EXISTING FLOOR DRAINS IN LOCKER ROOM AND WASHROOM.

C2 CHIP OUT AND/OR ADD LEVELING COMPOUND AT NEW FLOOR DRAINS IN SHOWERS, PROVIDE 2% SLOPE TO SHOWER FLOOR DRAINS.

C3 TAPE AND FINISH GYPSUM BOARD BEHIND MIRRORS. APPLY THREE COATS OF WHITE PAINT PRIOR TO INSTALLING MIRRORS.

C4 2 MM THICK ALUMINUM PLATE MECHANICALLY FASTENED TO INTERIOR OF TOILET STALL TO COVER GAP BETWEEN TOILET PARTITION AND WALL ABOVE TILE.

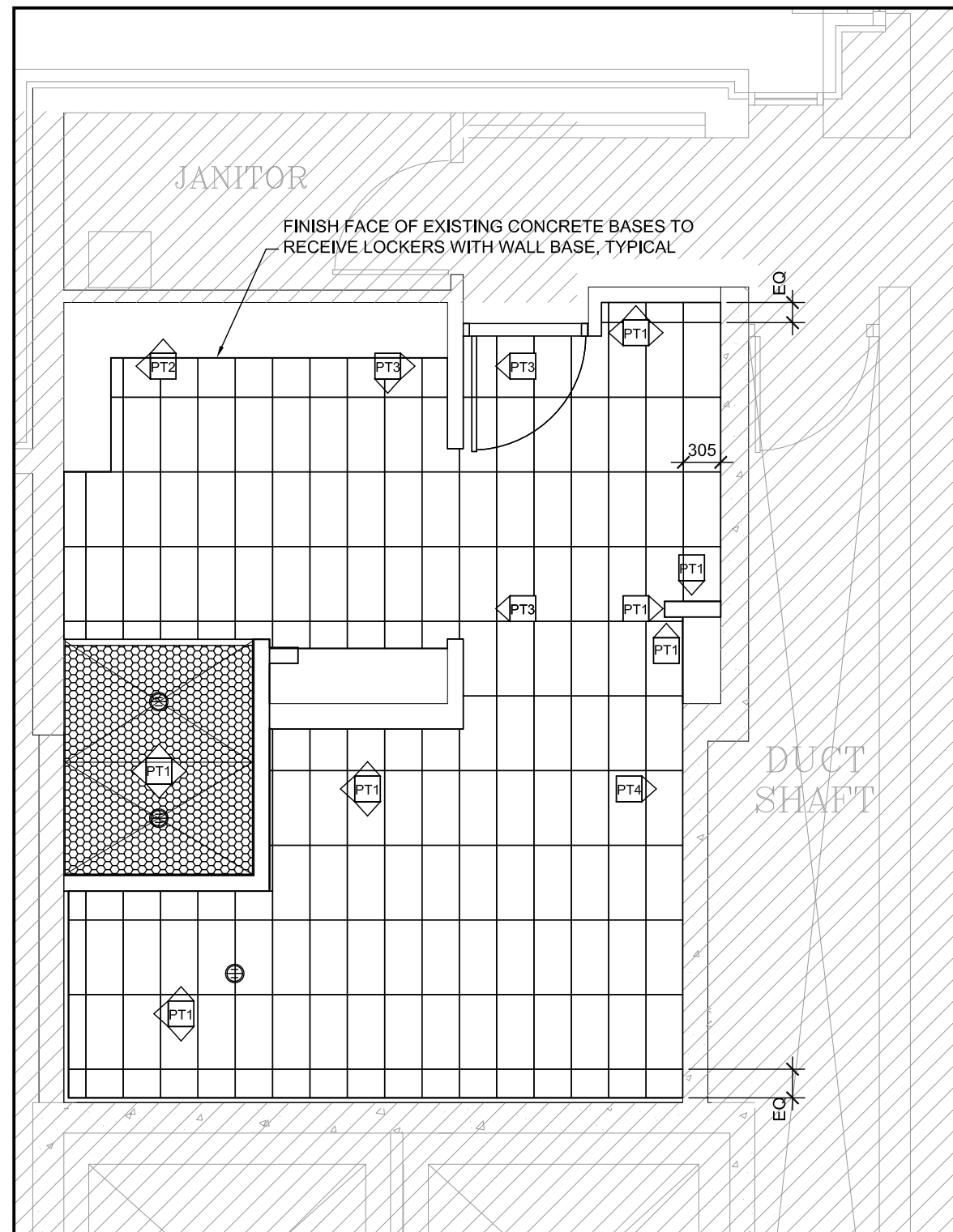
C5 STARTING OUT POINT FOR CERAMIC TILE FLOORING.

C6 ALIGN ALL URINAL CLEANOUT COVER PLATES WITH CENTRELINE OF URINAL FLUSH VALVES, ALIGN ALL COVER PLATES AT SAME ELEVATION.

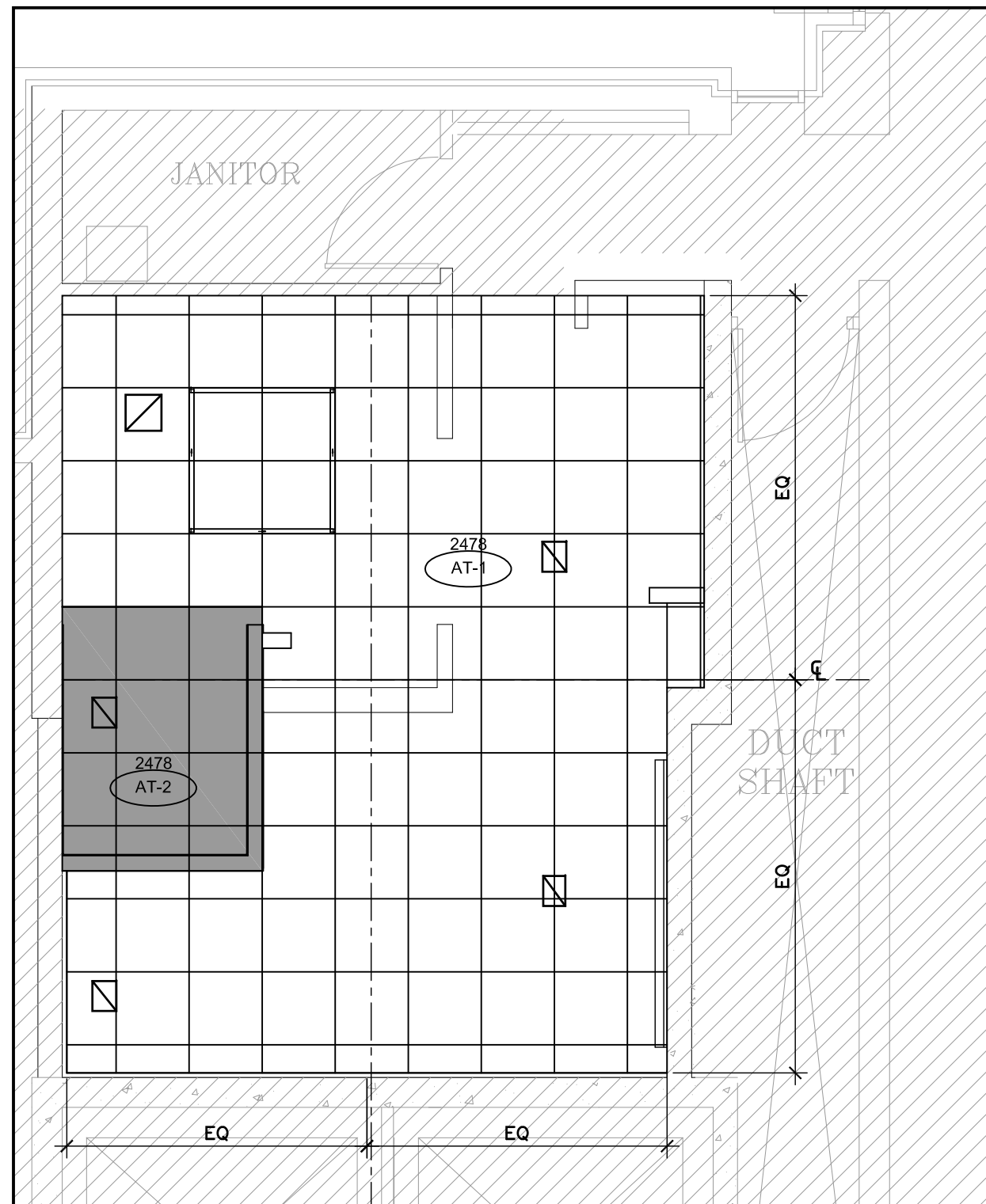
C7 PROVIDE CONTINUOUS STEEL STUDS TO U/S OF STRUCTURE AS REQUIRED FOR LATERAL SUPPORT OF PARTITION, PROVIDE DESIGN AND SHOP DRAWINGS BY ENGINEER LICENSED IN THE PROVINCE OF ONTARIO.

GENERAL CONSTRUCTION NOTES

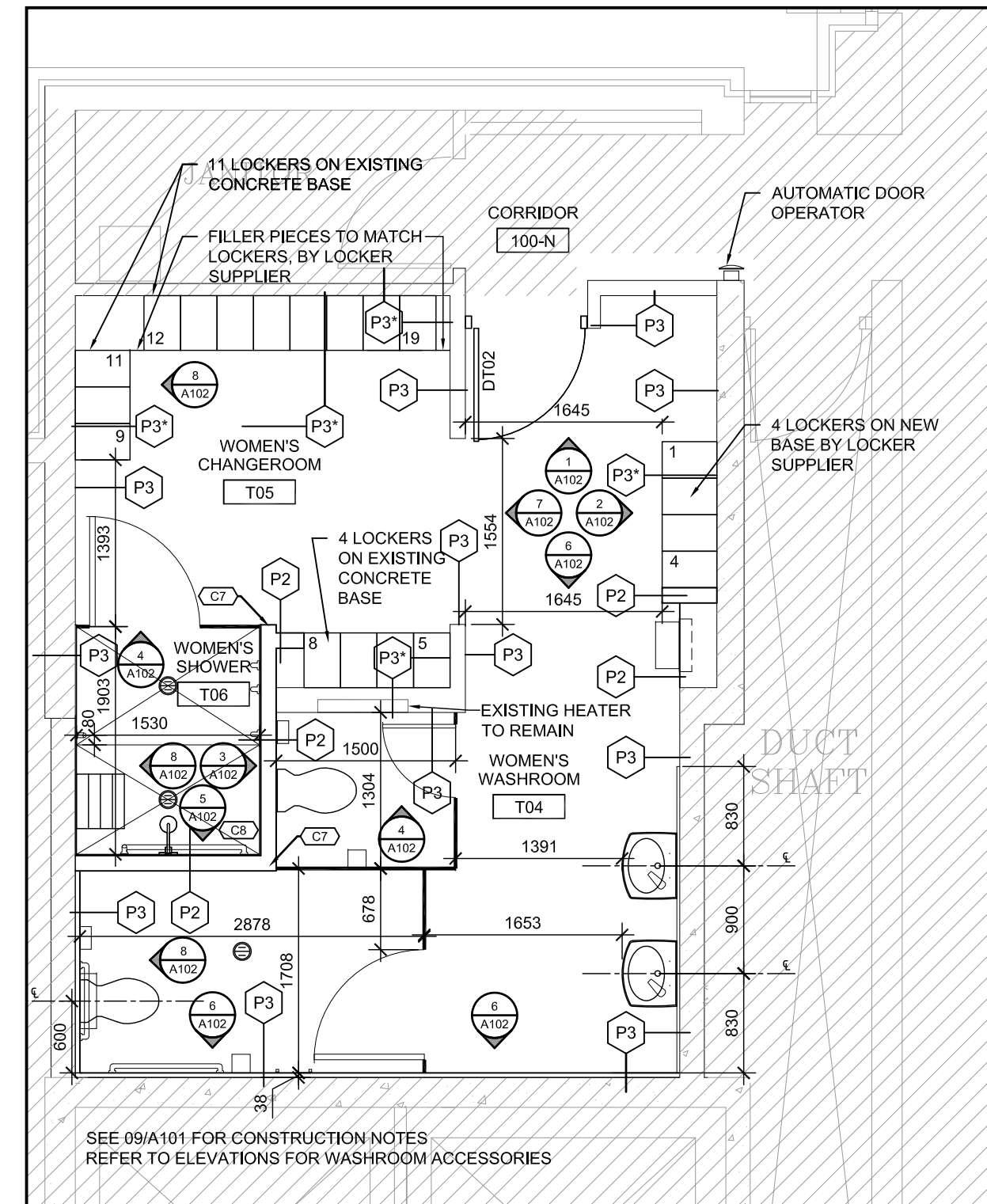
- REFER TO 14/A101 FOR FINISHES.
- REFER TO 3/A102 FOR WASHROOM ACCESSORIES LEGEND.
- PROVIDE 19 MM THICK PLYWOOD BLOCKING BEHIND GYPSUM BOARD AT ALL WASHROOM ACCESSORIES AND GRAB BARS.



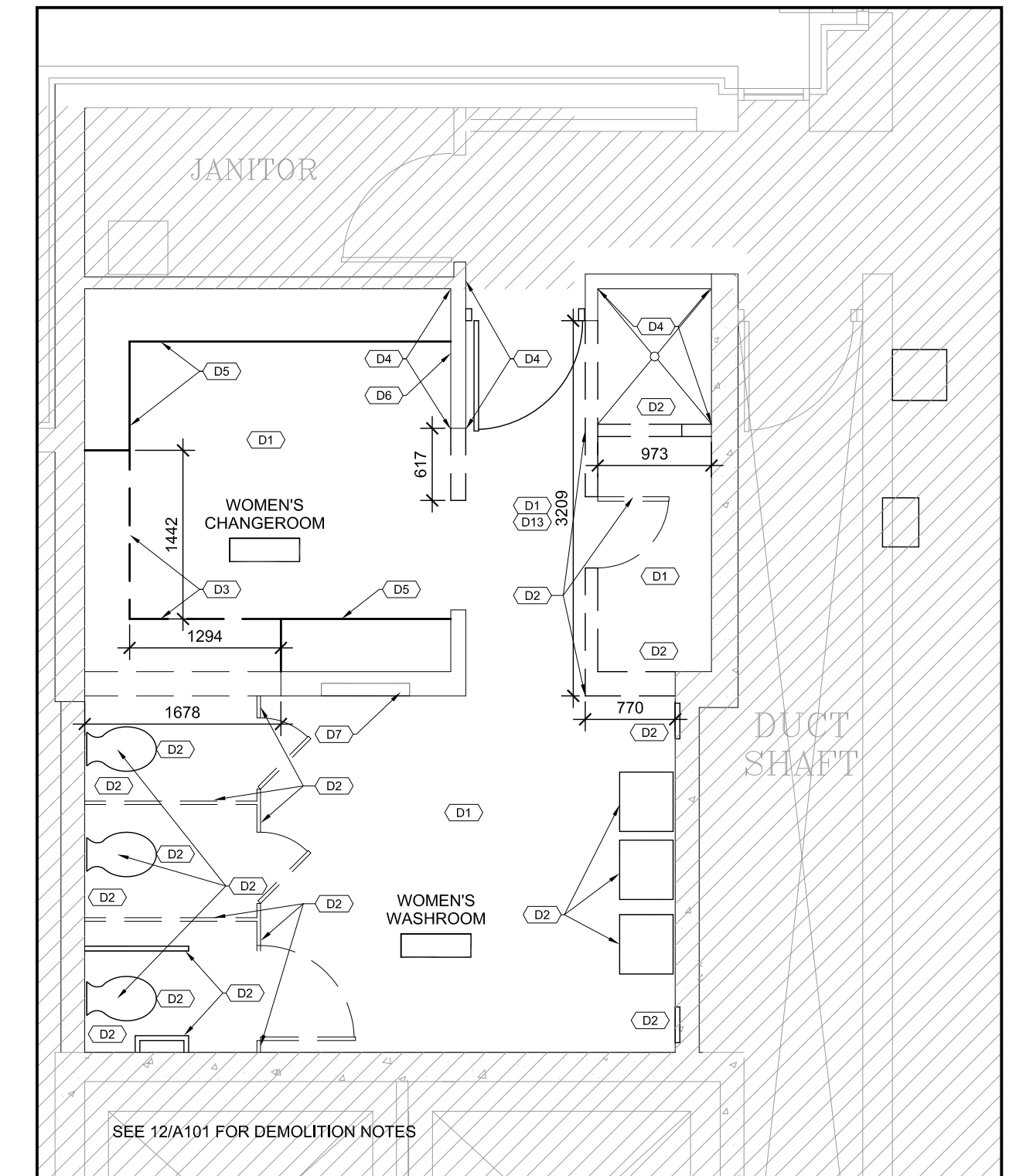
08 TYPICAL WOMEN'S W.R. FINISHES PLAN
A101 SCALE: 1:50



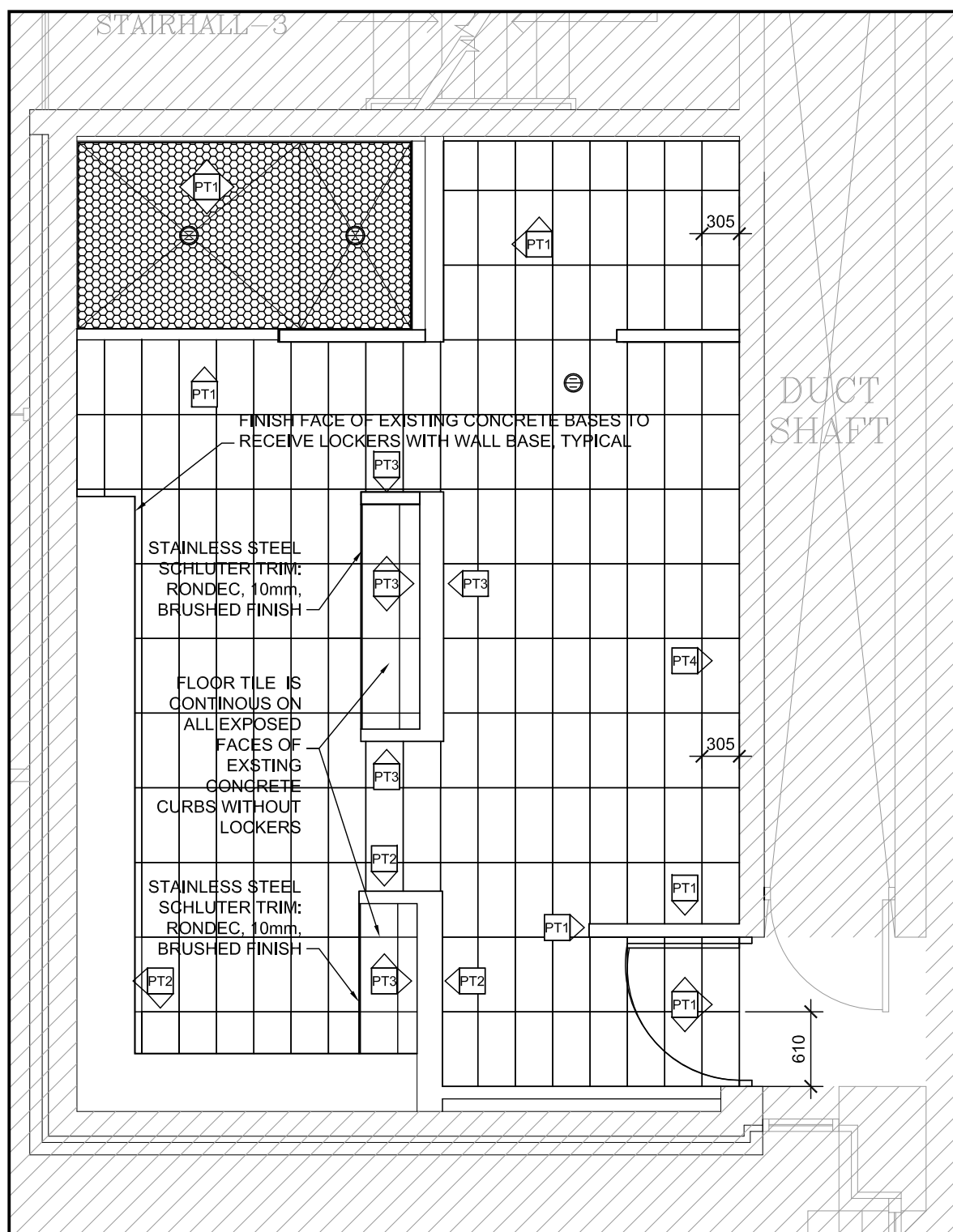
06 TYPICAL FLOOR- WOMEN'S REFLECTED CEILING
A101 SCALE: 1:50



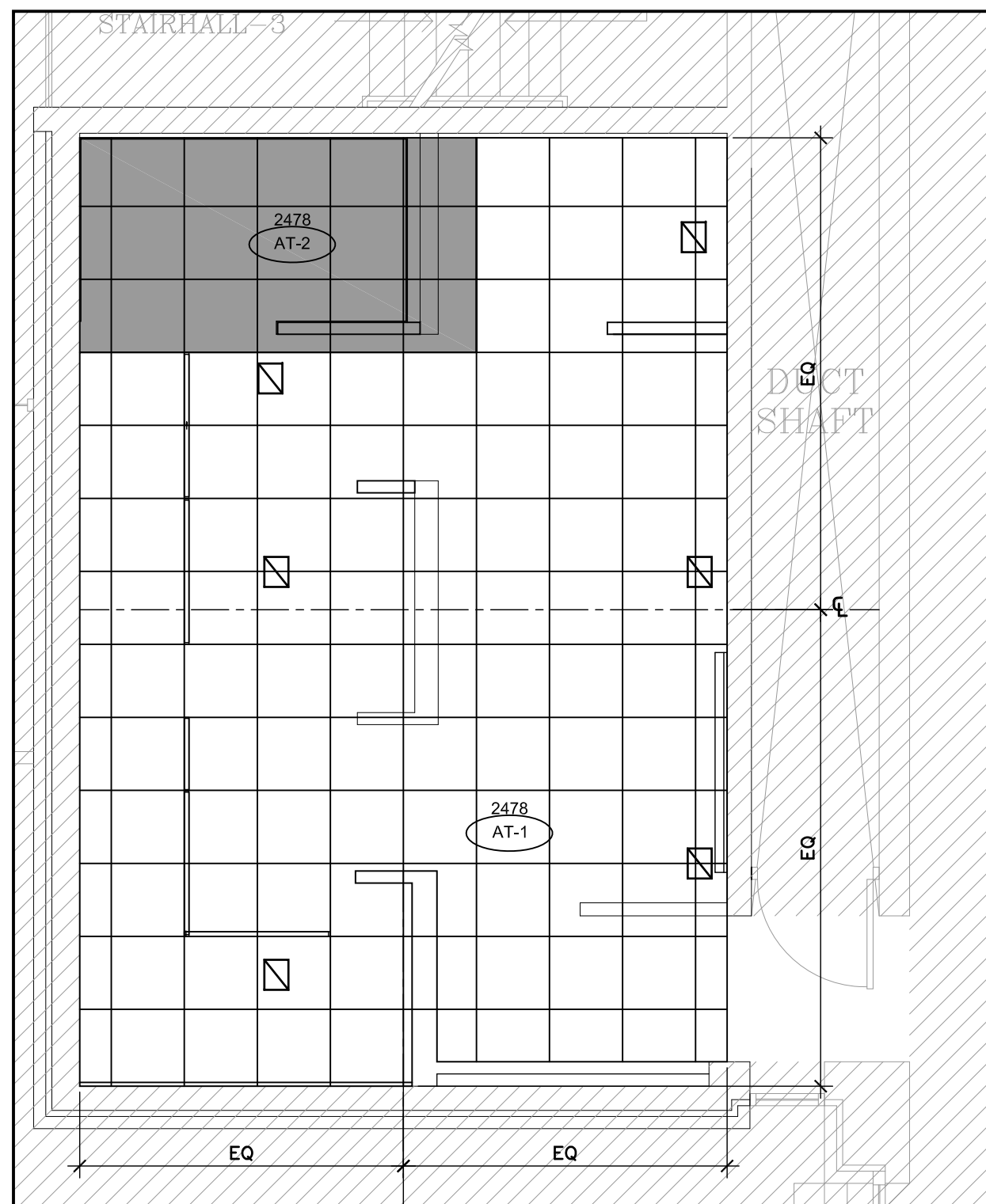
04 TYPICAL FLOOR-WOMEN'S CONSTRUCTION PLAN
A101 SCALE: 1:50



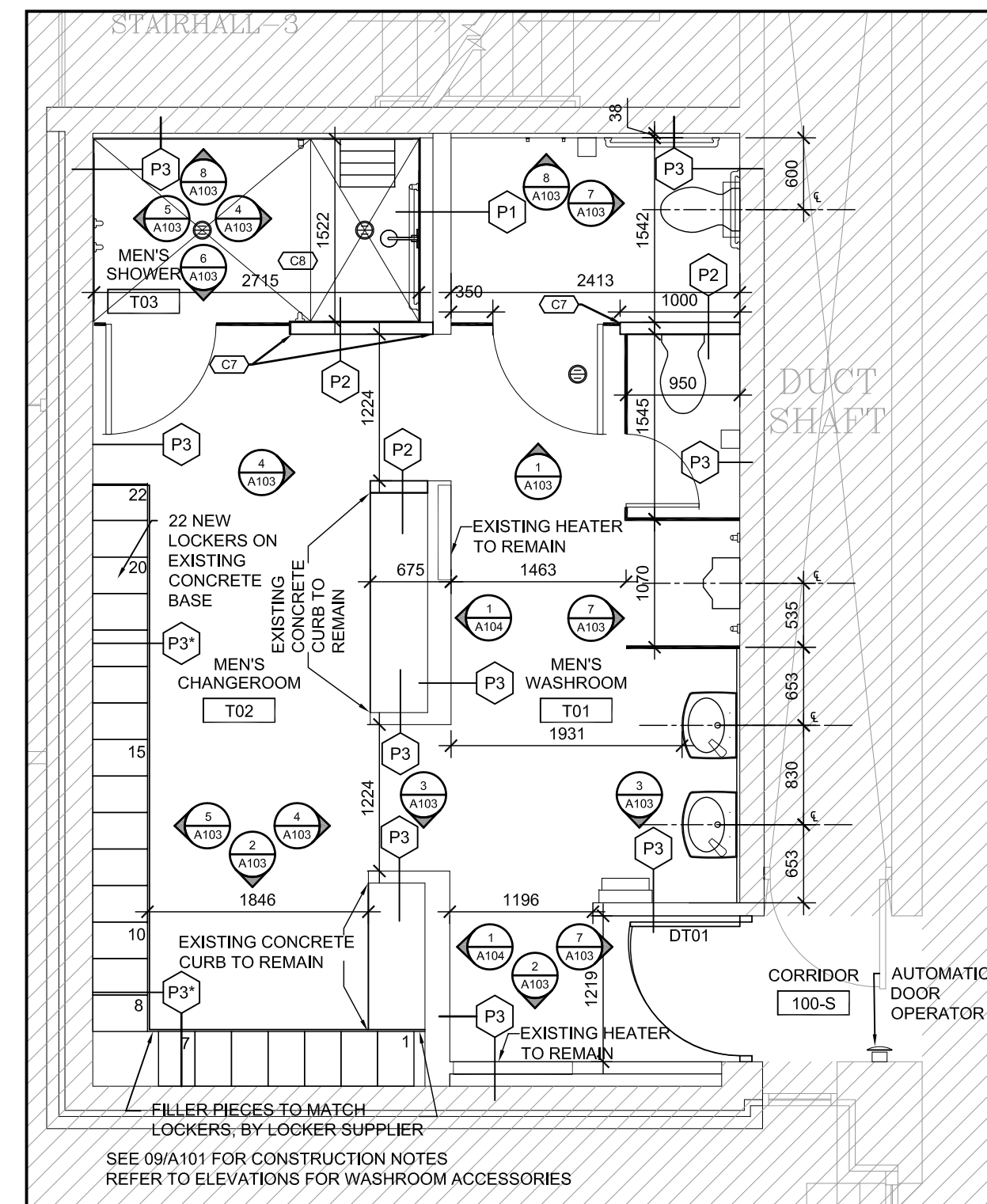
02 TYPICAL FLOOR-WOMEN'S DEMOLITION PLAN
A101 SCALE: 1:50



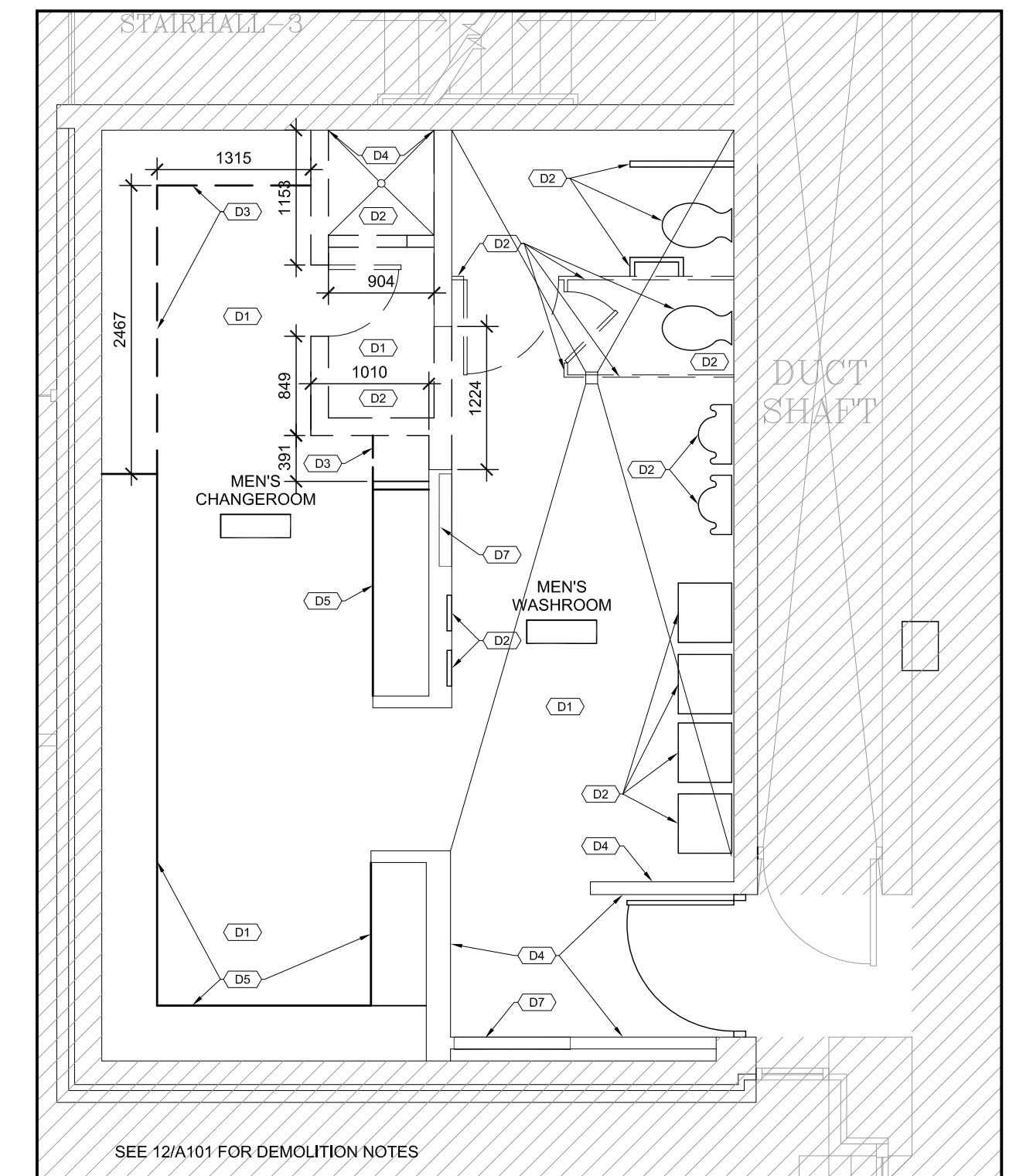
07 TYPICAL MEN'S W.R. FINISHES PLAN
A101 SCALE: 1:50



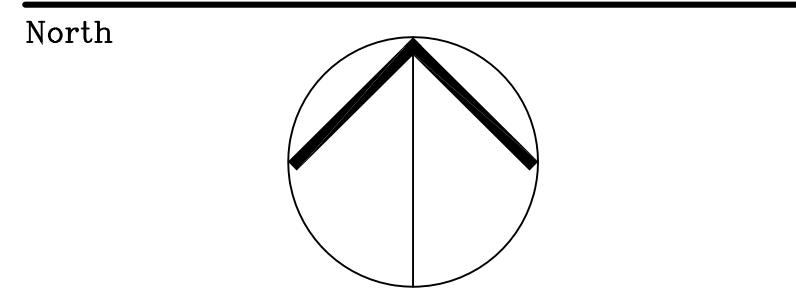
05 TYPICAL FLOOR-MEN'S REFLECTED CEILING
A101 SCALE: 1:50



03 TYPICAL FLOOR MEN'S CONSTRUCTION PLAN
A101 SCALE: 1:50



01 TYPICAL FLOOR-MEN'S DEMOLITION PLAN
A101 SCALE: 1:50



Revisions

No.	By	Description	Date
01	ZAS	ISSUED FOR TENDER	29 SEP. 2017

Project
**CFIA-OTTAWA LABORATORY
FALLOWFIELD, A-WING
WASHROOM
REFURBISHMENT**
OTTAWA, ON

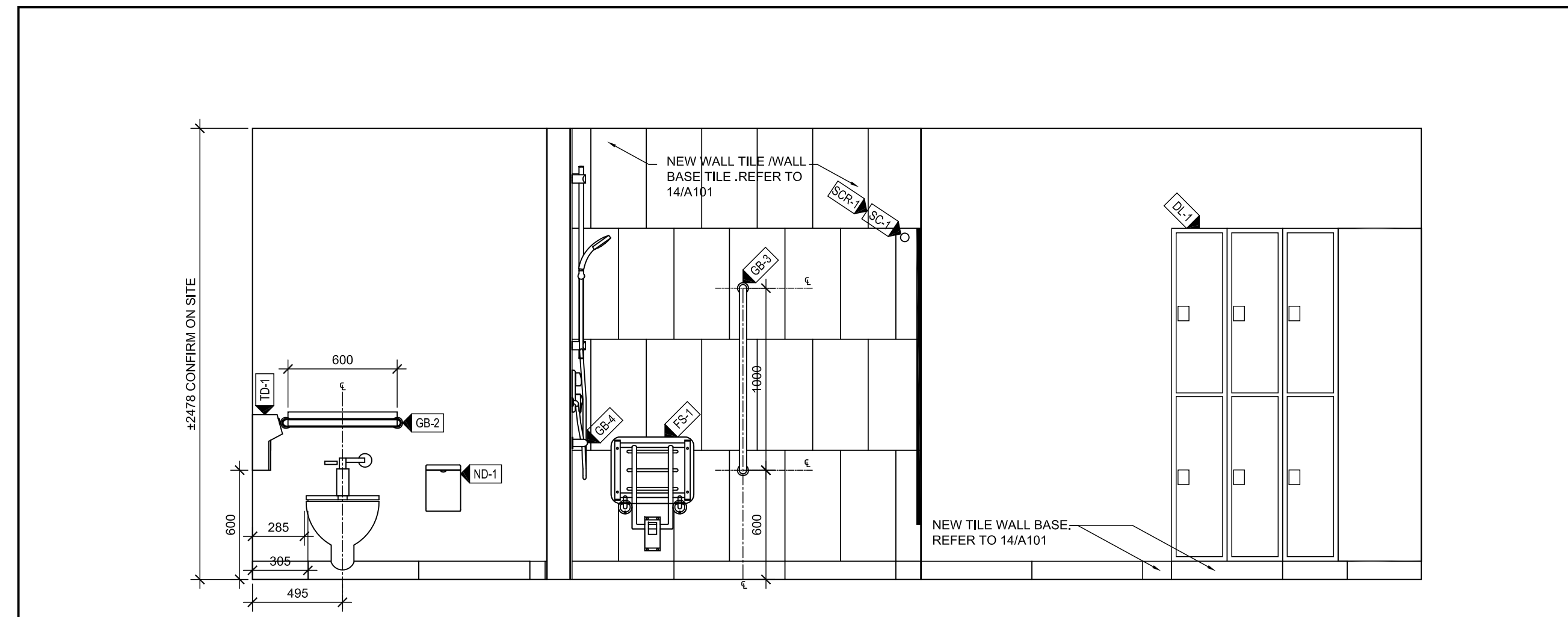
**GENERAL NOTES,
DEMOLITION & NEW
CONSTRUCTION PLANS**

Scale	AS NOTED	Stamp
Drawn	ZAS	
Checked	JS	

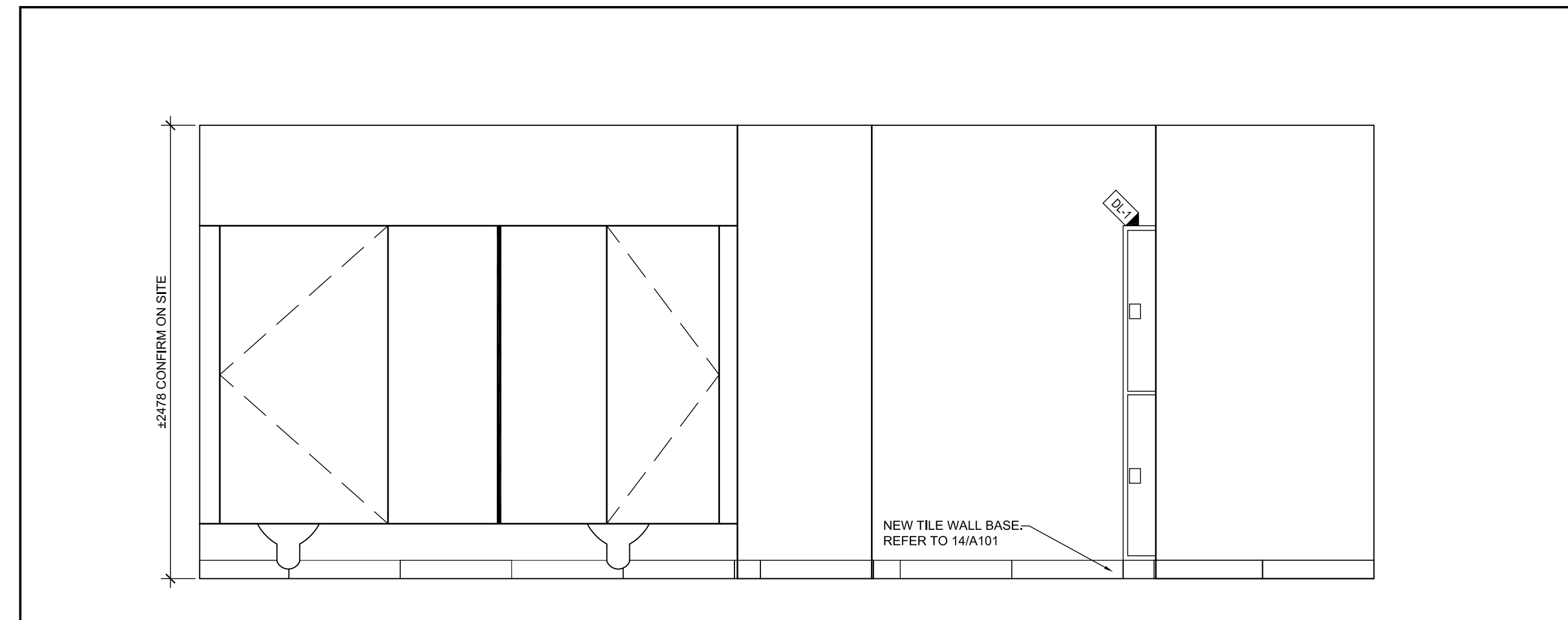
Project No. 17-166 Drawing No. A101
Date September 29, 2017

- | | | | | |
|---|---|---|---|---|
| GB-1 GRAB BAR 1 - HORIZONTAL
CONFORMS TO N.B.C. CLAUSE 3.8.3.11.(e)(f)
900 mm WIDTH MINIMUM, MTD. @ 750 A.F.F. | GB-5 GRAB BAR 5 - VERTICAL
CONFORMS TO N.B.C. CLAUSE 3.8.3.14. (f)
600 mm WIDTH MINIMUM, MTD. @ 1000 A.F.F. TO
THE CENTER OF THE GRAB BAR | DL-1 DOUBLE TIER LOCKER
MAN.: ASI
SIZE: 305 X 457 X 1829 mm
COLOR: TO LATER SELECTION OF ARCHITECT | SD-1 SOAP DISPENSER 1
MAN.: BOBRICK NO.: B824
COL.: STAINLESS STEEL
COUNTER-MOUNTED - AUTOMATIC | ND-1 SANITARY DISPOSAL 1
MAN.: BOBRICK NO.: B270
FIN.: STAINLESS STEEL
SIZE: 255 X 150 X 95 mm
SURFACE MOUNTED |
| GB-2 GRAB BAR 2 - HORIZONTAL
CONFORMS TO N.B.C. CLAUSE 3.8.3.11.(e)(f)
600 mm WIDTH MINIMUM, MTD. @ 750 A.F.F. | SC-1 SHOWER CURTAIN
MAN.: RICHELIEU
PRODUCT NO.: B2042
SIZE: SIZED FOR FULL WIDTH OF OPENING
COLOUR: WHITE
NOTES: PROVIDE STAINLESS STEEL HOOKS | PD-1 PAPER TOWEL DISPENSER 2 AND WASTE RECEPTACLE
MAN.: BOBRICK NO.: B3949
COL.: STAINLESS STEEL
WALL MOUNTED CONVERTIBLE | TD-1 TOILET TISSUE DISPENSER 1- TWIN HIDE -A-ROLL
MAN.: ASI NO.: 0030
COL.: STAINLESS STEEL
SIZE: 152 X 305 X 165 mm
SURFACE MOUNTED | SD-2 SOAP DISH 1
MAN.: BOBRICK NO.: B4380
FIN.: STAINLESS STEEL
SIZE: 185 X 125 mm
RECESSED HEAVY-DUTY SOAP DISH |
| GB-3 GRAB BAR 3 - VERTICAL
CONFORMS TO N.B.C. CLAUSE 3.8.3.16.(f)(ii)
1000 mm WIDTH MINIMUM, MTD. @ 600 A.F.F. LOCATED ON THE
SIDE WALL 80mm FROM THE ADJACENT CLEAR FLOOR SPACE | SCR-1 SHOWER CURTAIN ROD
MAN.: RICHELIEU
SIZE: 25 mm DIA. LENGTH SIZED FOR FULL OPENING
COLOUR: STAINLESS STEEL | PD-2 PAPER TOWEL DISPENSER 2 AND WASTE RECEPTACLE
MAN.: BOBRICK NO.: B3947
COL.: STAINLESS STEEL
RECESSED CONVERTIBLE | CH-1 COAT HOOK
CONFORMS TO N.B.C. CLAUSE 3.8.3.11
MAN.: BOBRICK NO.: B-6717
FIN.: STAIN FINISH STAINLESS STEEL | ML-1 MIRROR WITH METAL CLIPS |
| GB-4 GRAB BAR 4 - L SHAPED
CONFORMS TO N.B.C. CLAUSE 3.8.3.16.(f)(ii)
HORIZONTAL MEMBER 1000 mm WIDTH MINIMUM, MTD. @ 750
A.F.F. AND A VERTICAL MEMBER 750mm LONG MOUNTED 400mm
FROM THE SIDE WALL ON WHICH THE OTHER VERTICAL GRAB
BAR IS MOUNTED. | | | FS-1 FOLDING SHOWER/DRESSING AREA SEAT
MAN.: BOBRICK NO.: B5191
COL.: IVORY-COLORED FACE
COUNTER-MOUNTED - AUTOMATIC | ADO AUTOMATIC DOOR OPERATOR &
PUSH PADDLES (152 mm DIA.) |

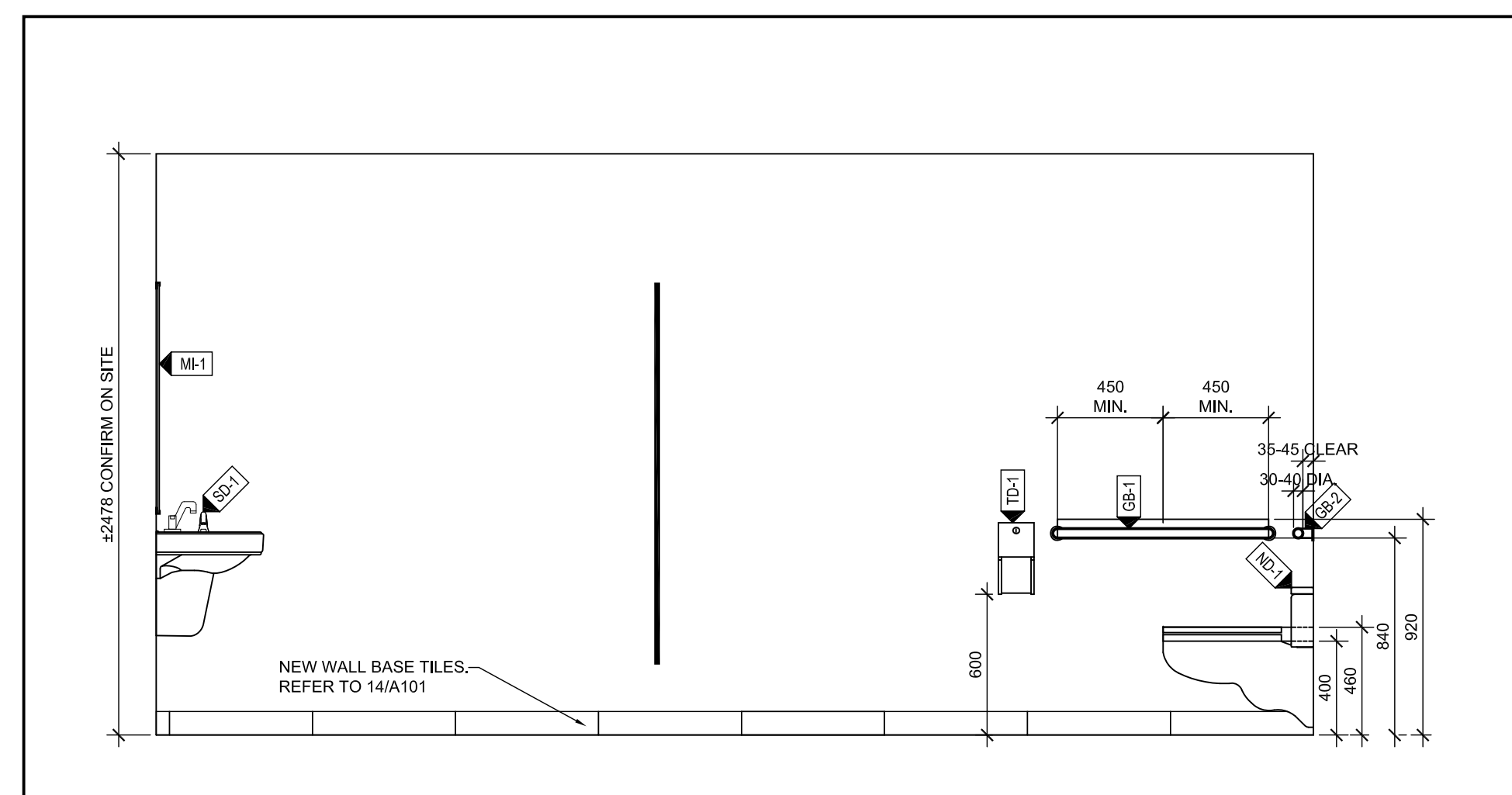
3 WASHROOM ACCESSORIES LEGENDS
A102 SCALE: N/A



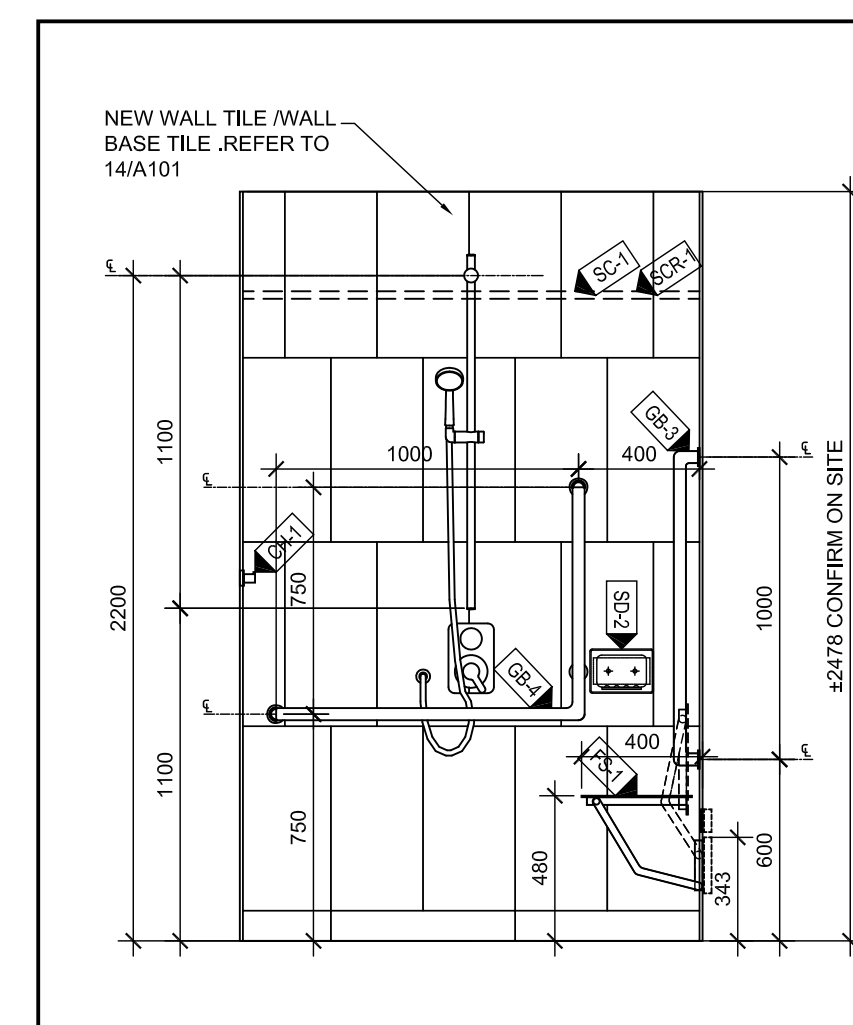
8 WEST WOMEN'S ELEVATION
A102 SCALE: 1:25



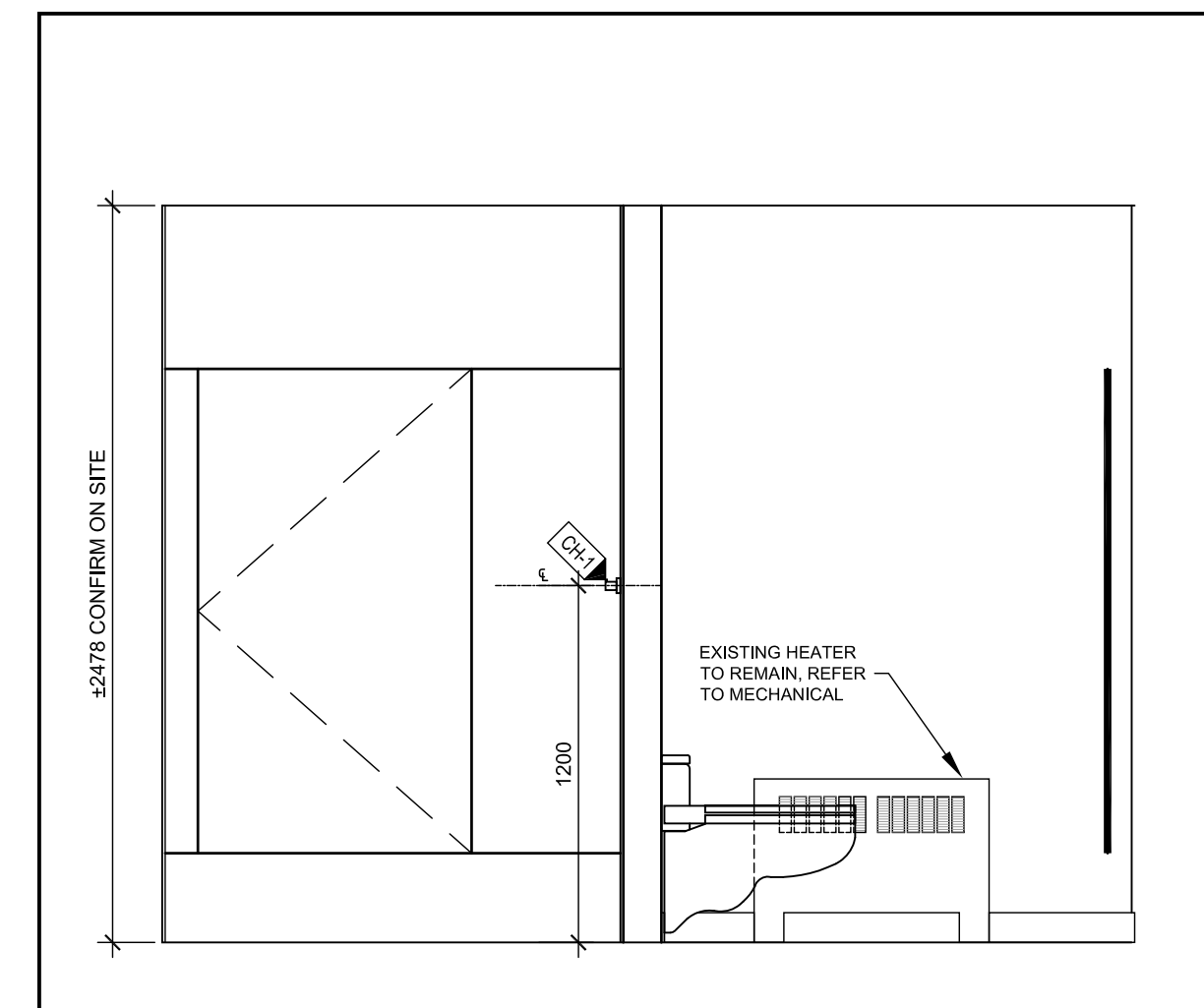
7 WEST WOMEN'S ELEVATION
A102 SCALE: 1:25



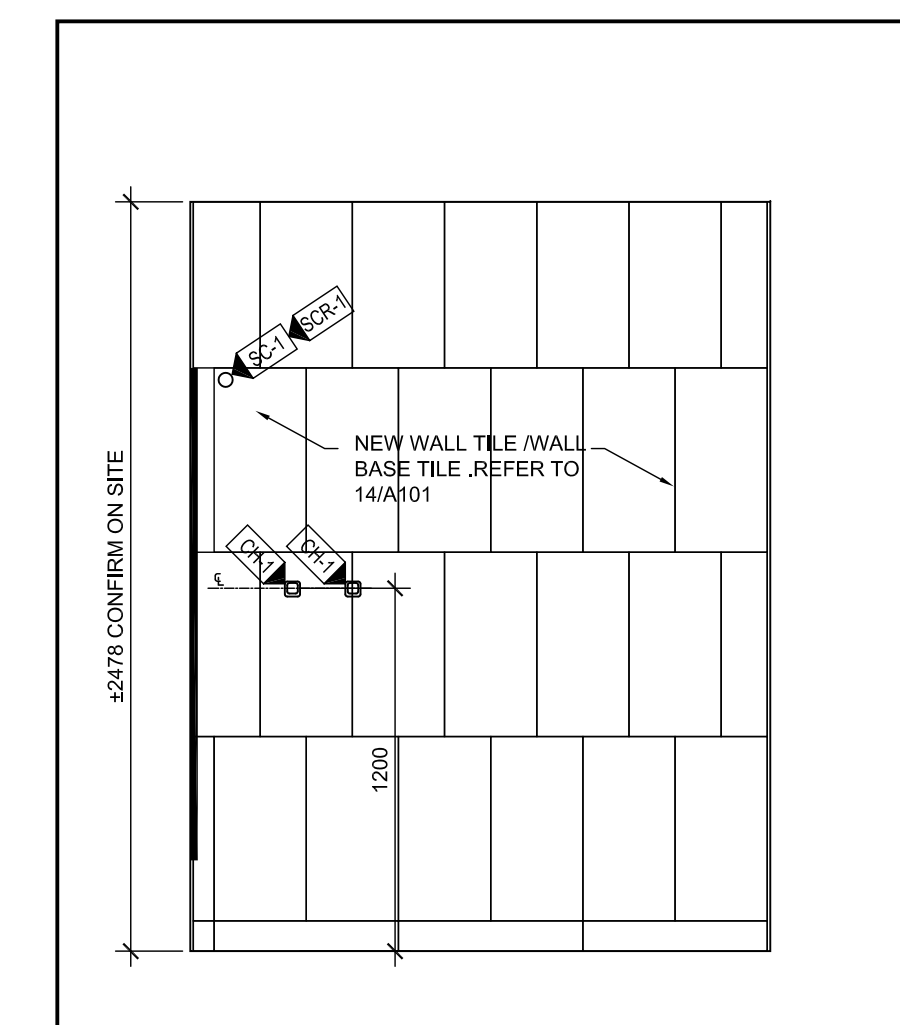
6 SOUTH WOMEN'S ELEVATION
A102 SCALE: 1:25



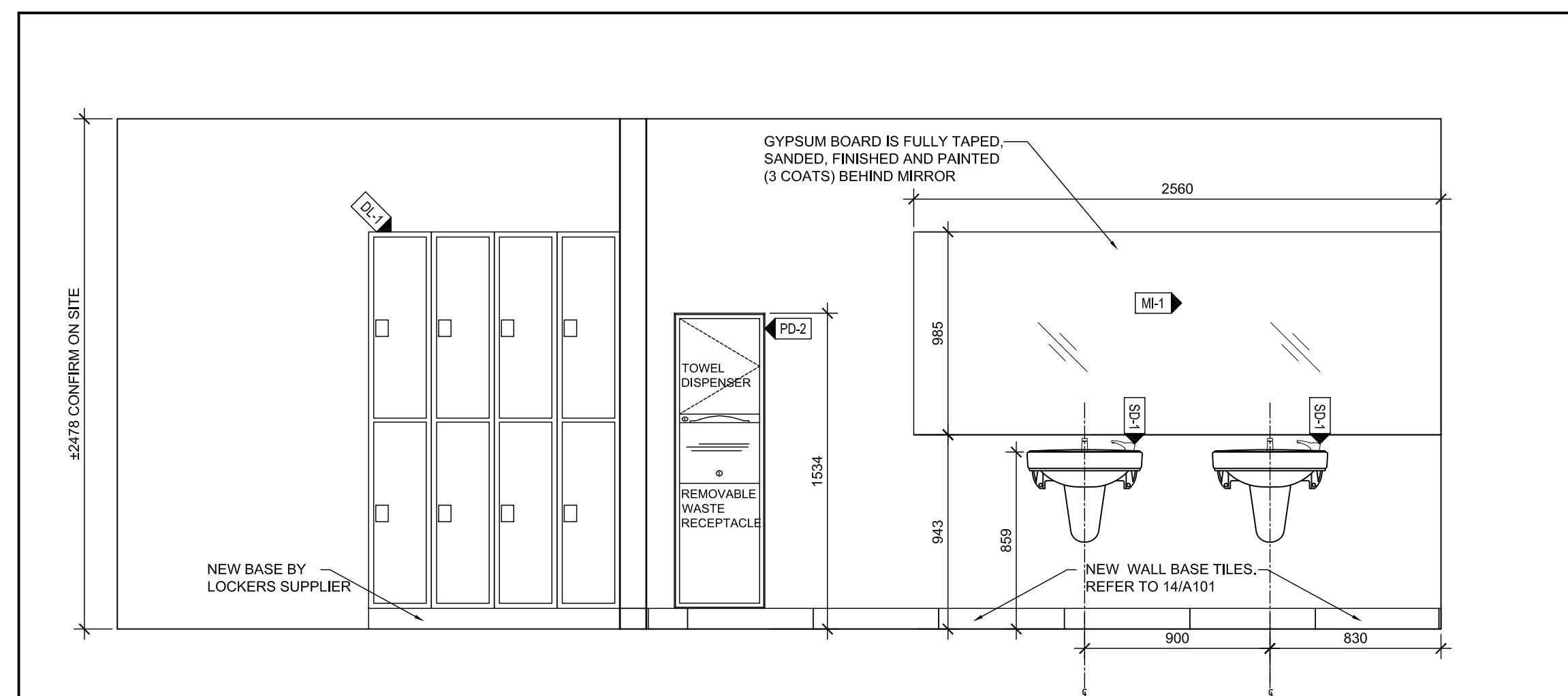
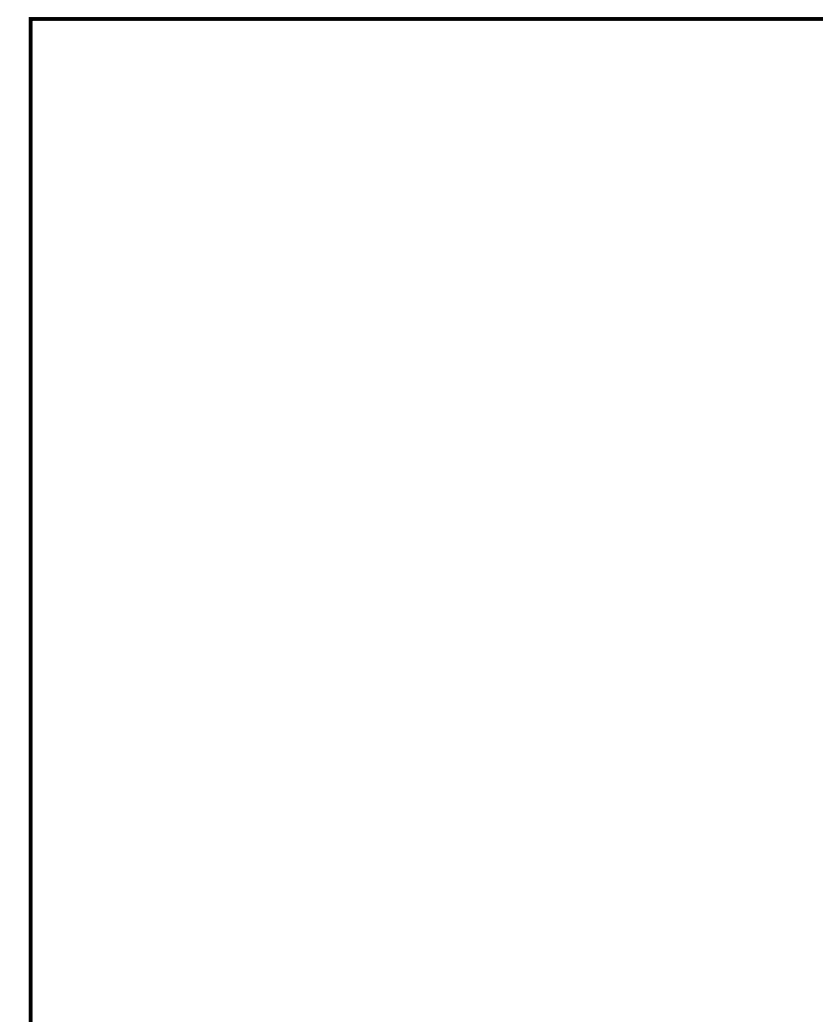
5 SOUTH WOMEN'S SHOWER ELE.
A102 SCALE: 1:25



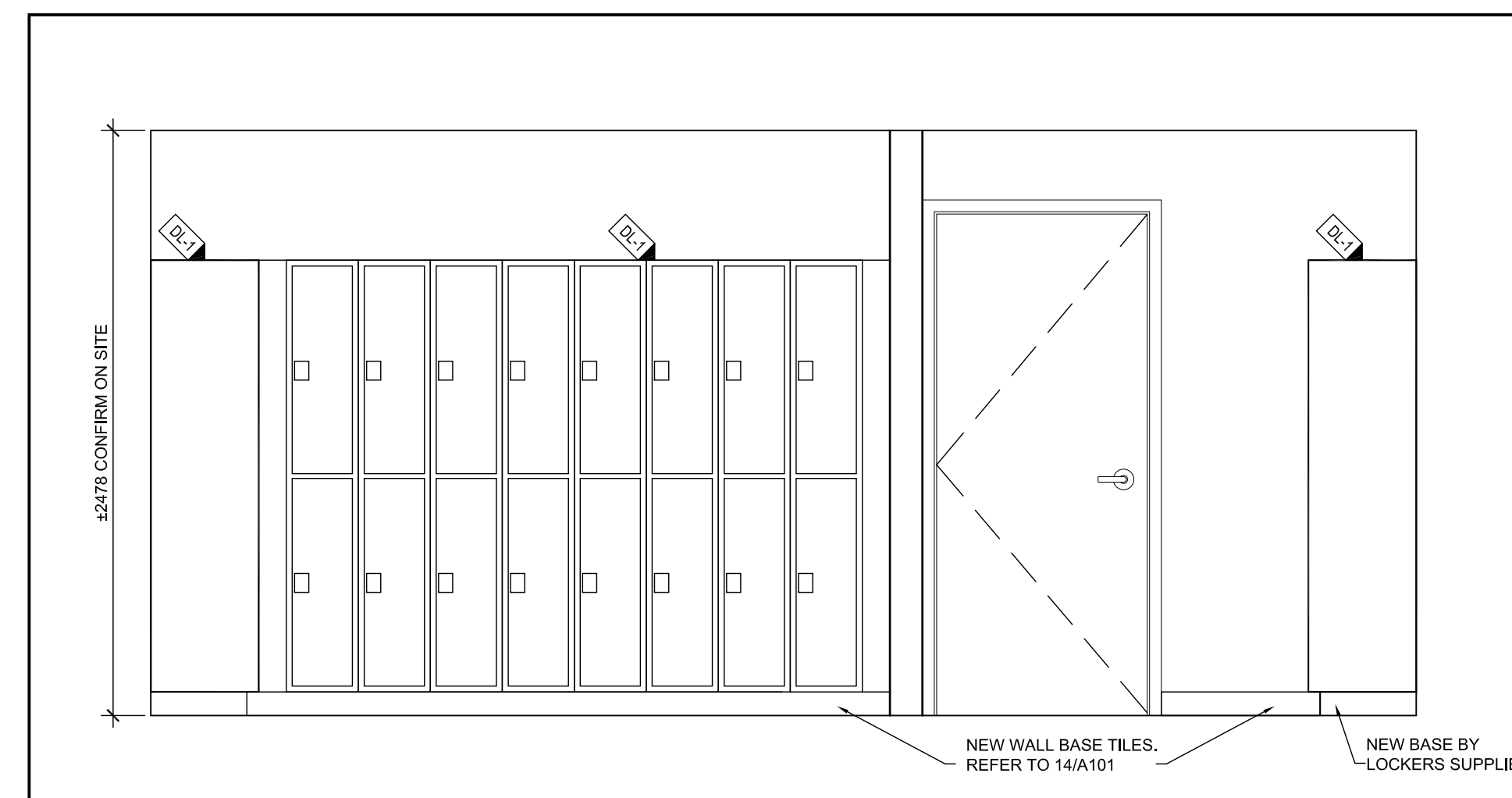
4 NORTH WOMEN'S SHOWER ELEVATION
A102 SCALE: 1:25



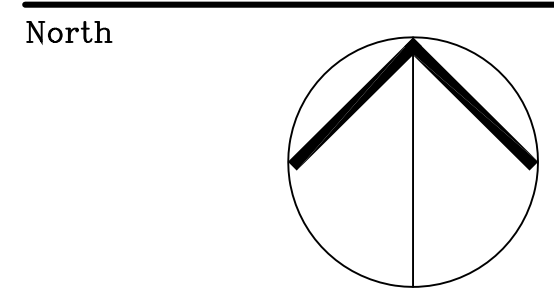
3 EAST WOMEN'S SHOWER ELEVATION
A102 SCALE: 1:25



2 EAST WOMEN'S ELEVATION
A102 SCALE: 1:25



1 NORTH WOMEN'S ELEVATION
A102 SCALE: 1:25



Revisions

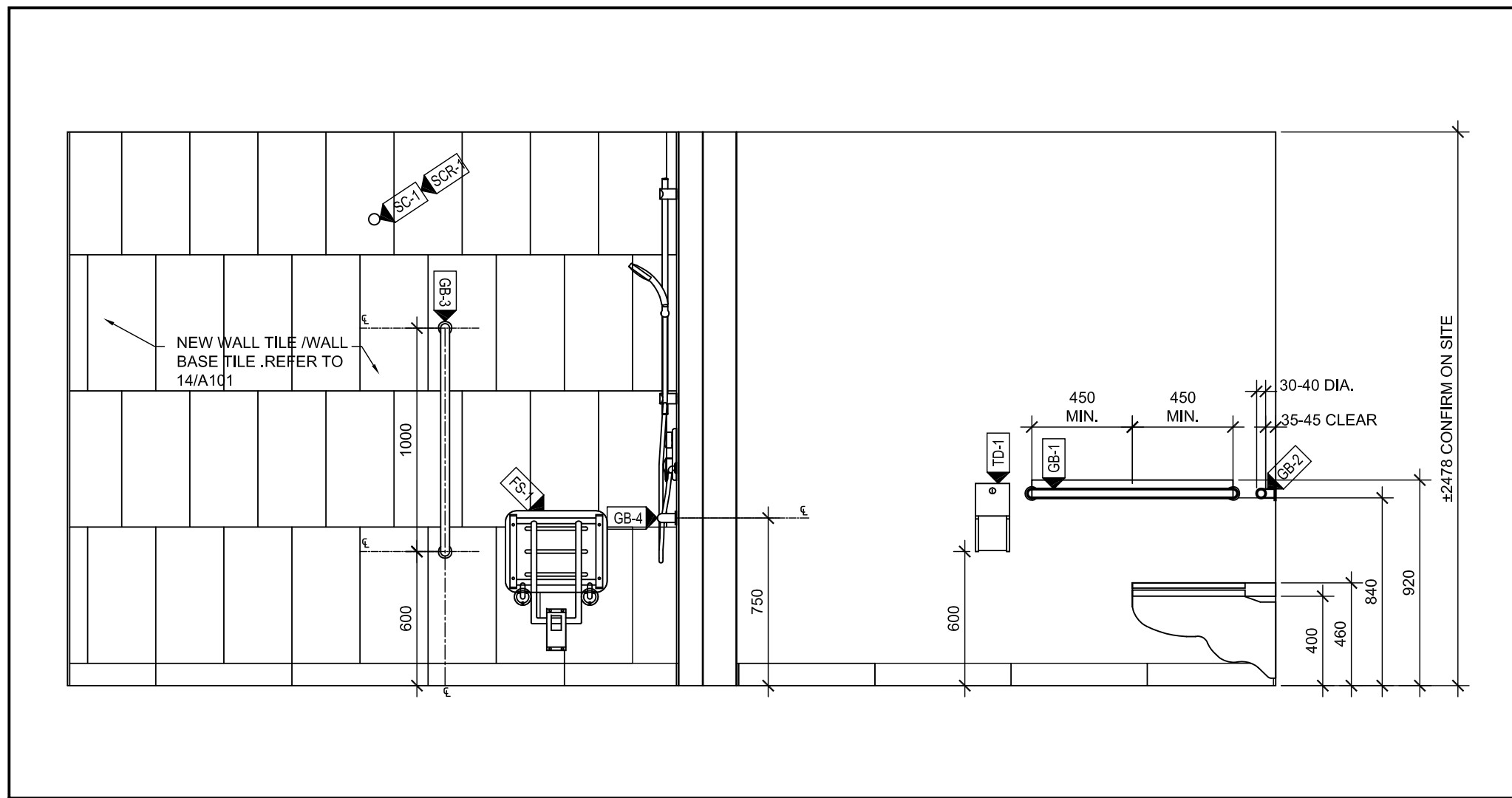
No.	By	Description	Date
01	ZAS	ISSUED FOR TENDER	26 SEP. 2017

Project
**CFIA-OTTAWA LABORATORY
FALLOWFIELD, A-WING
WASHROOM
REFURBISHMENT
OTTAWA, ON**

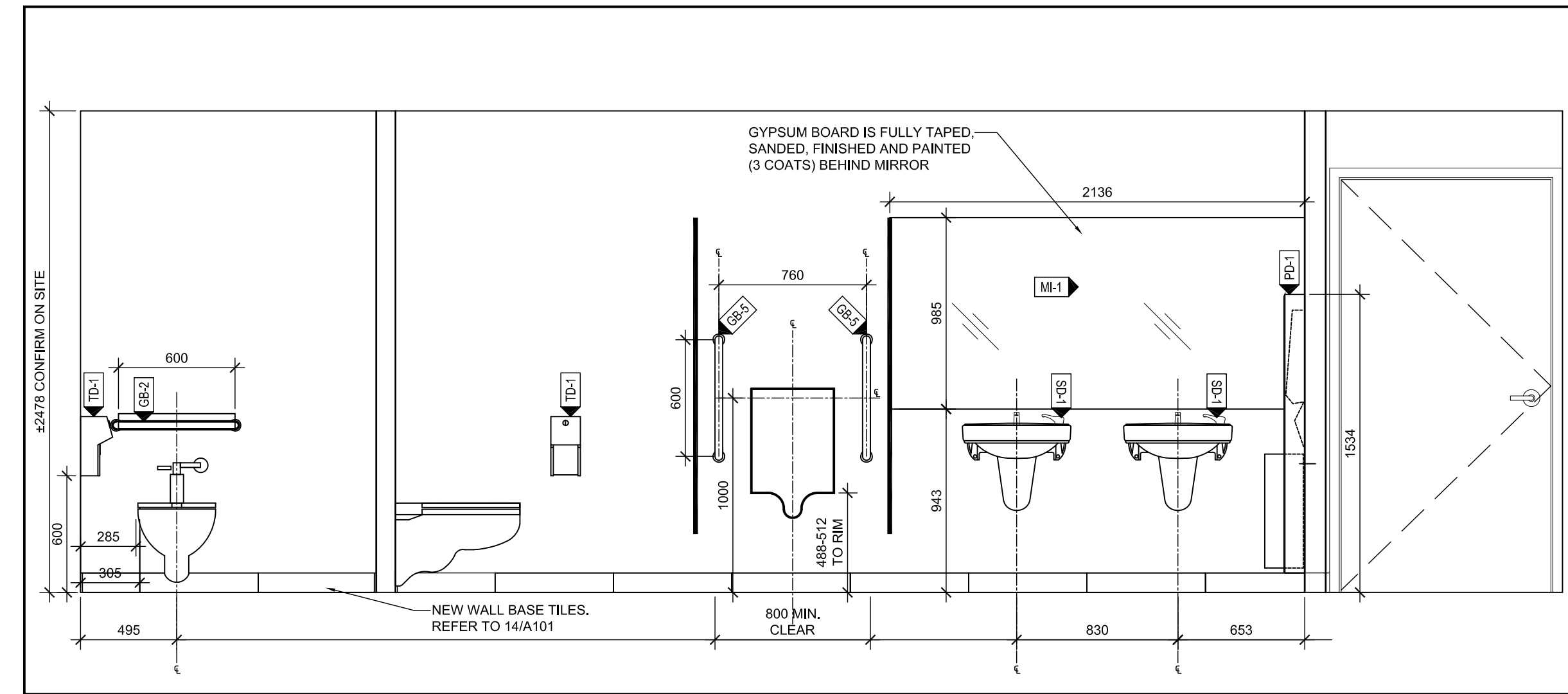
Drawing
**W.R. LEGENDS
WOMEN'S ELEVATIONS**

Scale AS NOTED
Stamp
Drawn ZAS
Checked JS

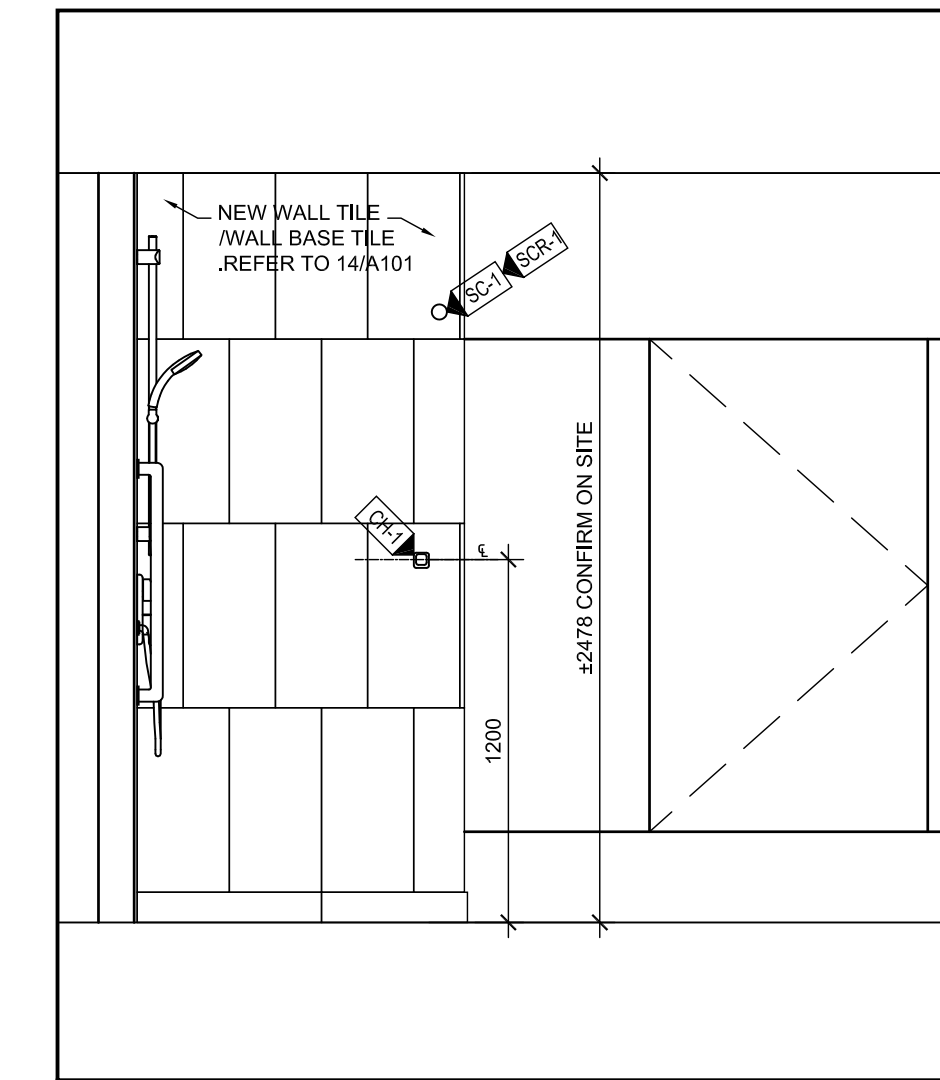
Project No. 17-166
Drawing No.
Date September 29, 2017
A102



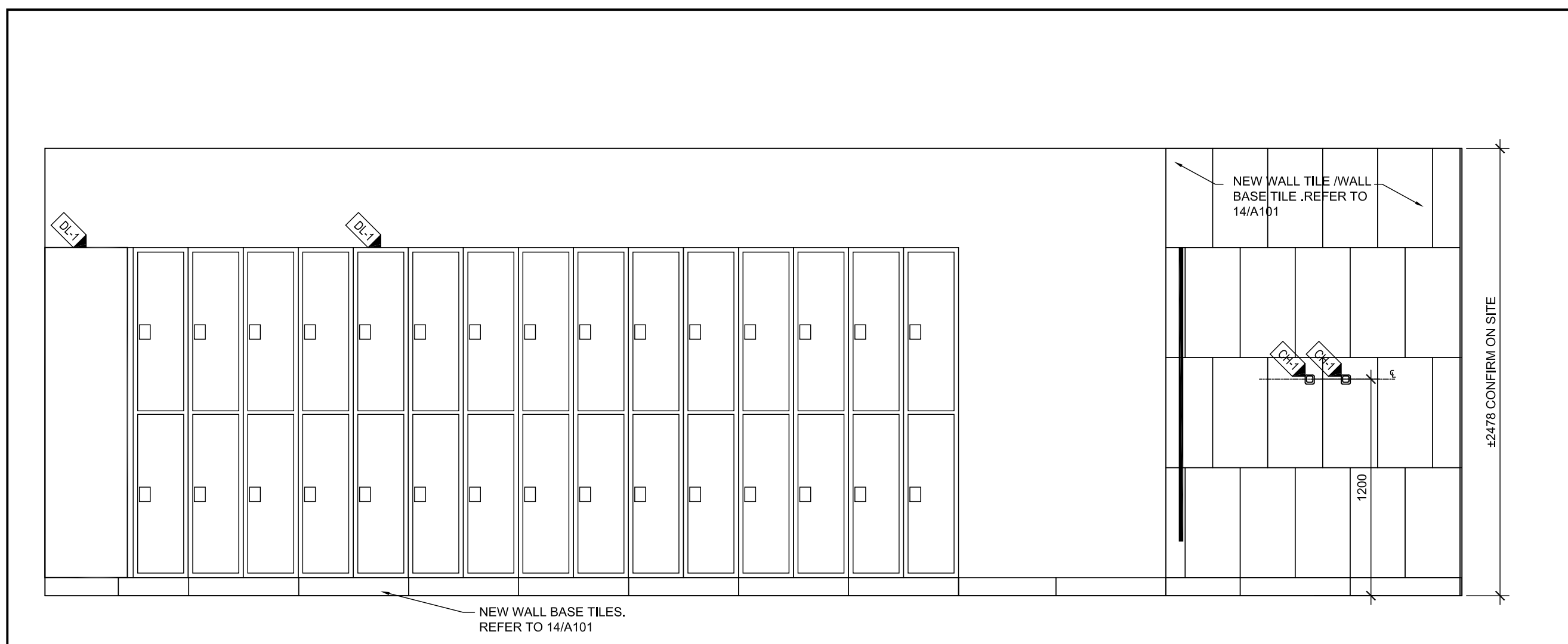
8 MEN'S NORTH ELEVATION
A103 SCALE: 1:25



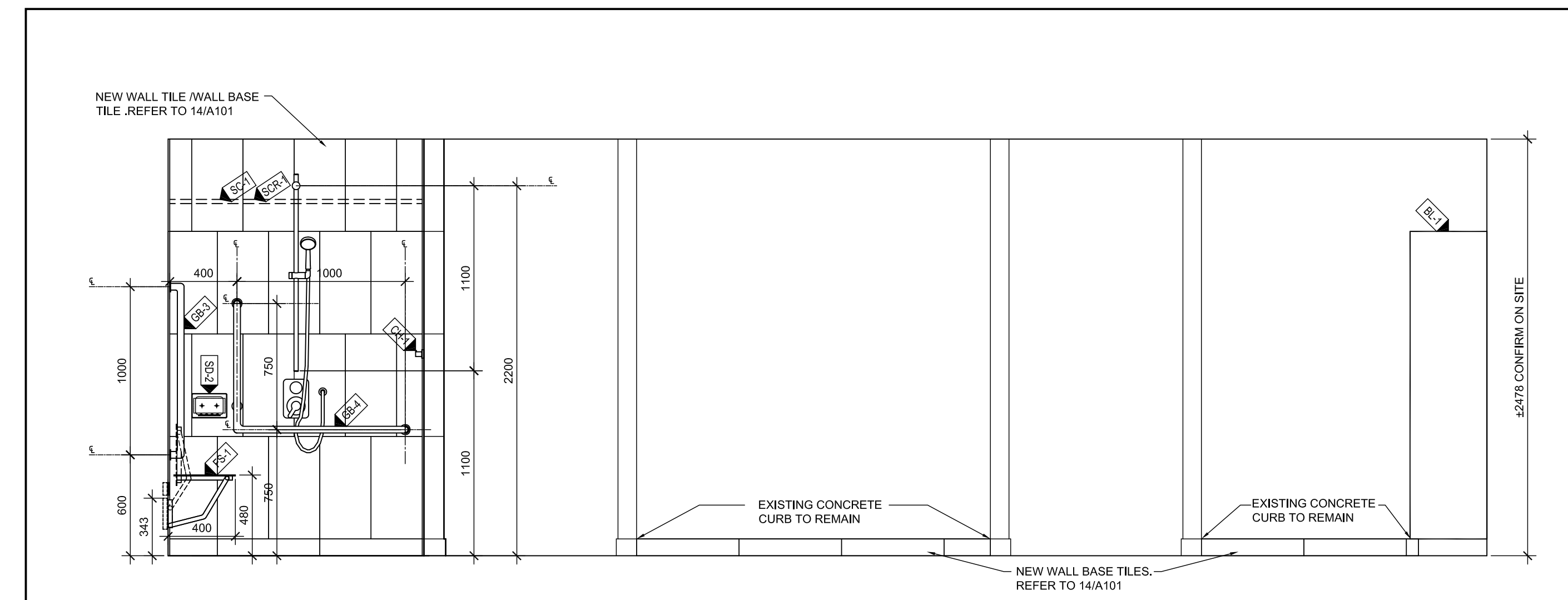
7 MEN'S WASHROOM EAST ELEVATION
A103 SCALE: 1:25



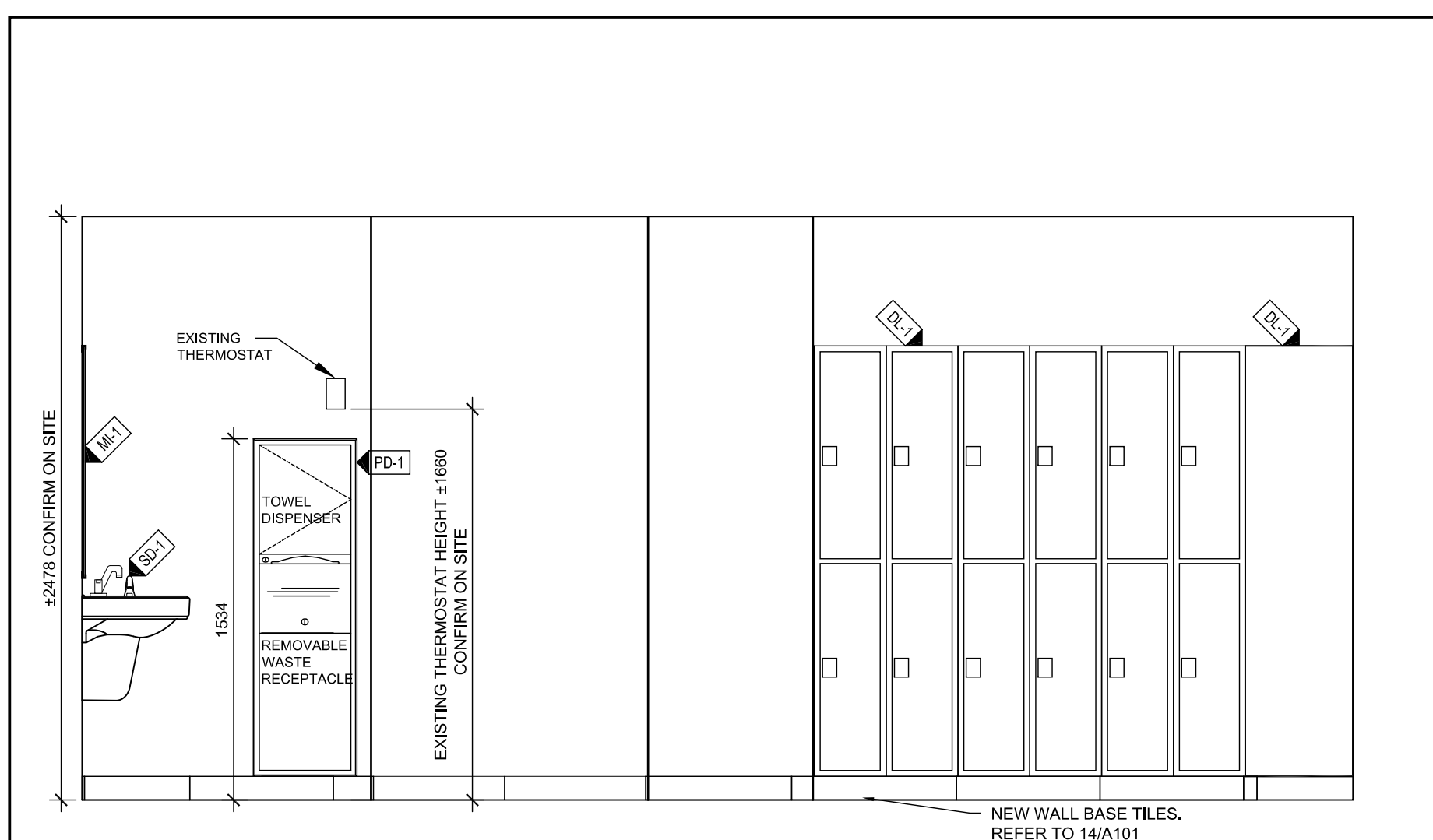
6 MEN'S SOUTH ELEVATION
A103 SCALE: 1:25



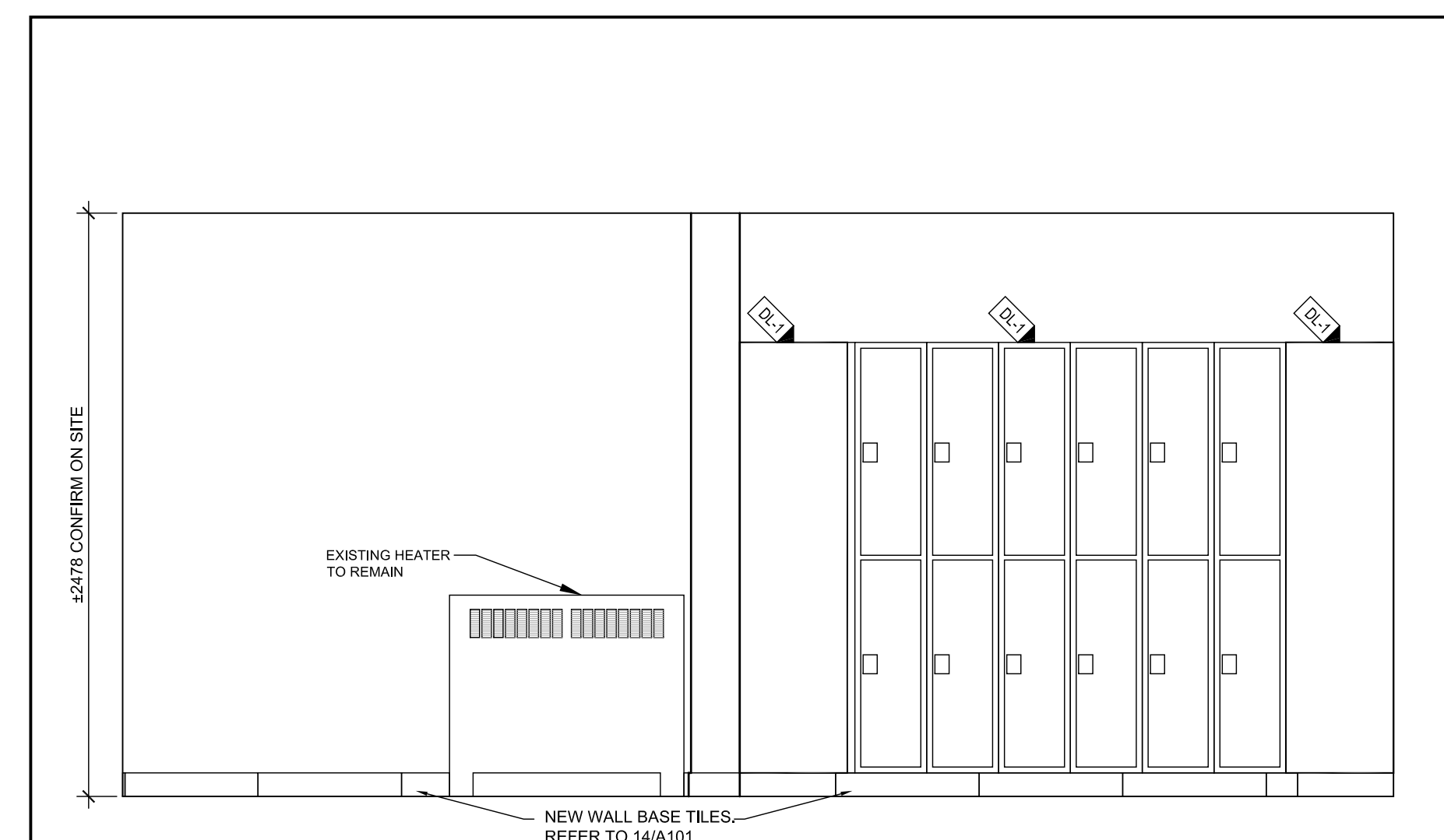
5 MEN'S WEST ELEVATION
A103 SCALE: 1:25



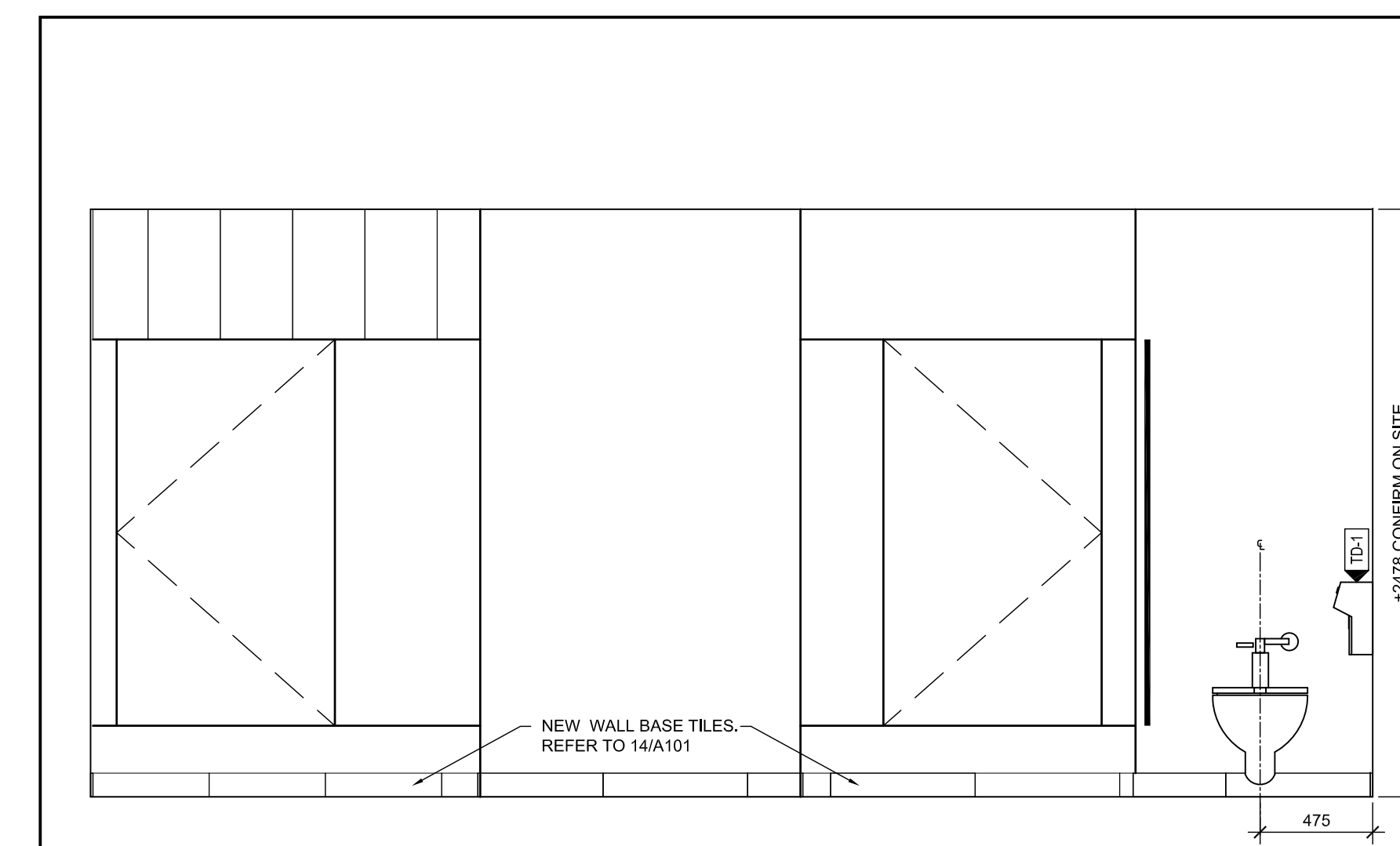
4 MEN'S EAST ELEVATION
A103 SCALE: 1:25



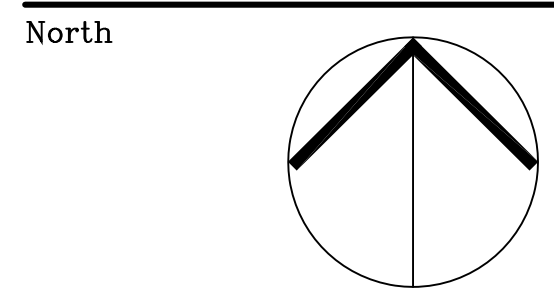
3 MEN'S SOUTH ELEVATION
A103 SCALE: 1:25



2 MEN'S SOUTH ELEVATION
A103 SCALE: 1:25



1 MEN'S NORTH ELEVATION
A103 SCALE: 1:25



Revisions

No.	By	Description	Date
01	ZAS	ISSUED FOR TENDER	29 SEP. 2017

Project
**CFIA-OTTAWA LABORATORY
FALLOWFIELD, A-WING
WASHROOM
REFURBISHMENT**
OTTAWA, ON

Drawing
MEN'S W.R. ELEVATIONS

Scale AS NOTED
Stamp
Drawn ZAS
Checked JS

Project No. 17-166
Drawing No. **A103**
Date September 29, 2017

THE EXISTING MEN'S AND WOMEN'S WASHROOMS ON ALL FOUR FLOORS OF WING A AT THE CFIA OTTAWA LABORATORY FALLOWFIELD WILL BE COMPLETELY REFURBISHED. THE EXISTING FINISHES AND FIXTURES WILL BE REMOVED AND REPLACED. THE FLOOR PLAN WILL BE ALTERED SLIGHTLY TO MEET THE BARRIER-FREE REQUIREMENTS OF THE NATIONAL BUILDING CODE.

WING A AT THE CFIA OTTAWA LABORATORY FALLOWFIELD IS AN EXISTING 4 STOREY LABORATORY BUILDING. THE BUILDING IS SPRINKLERED AND CONSTRUCTED OF NON-COMBUSTIBLE CONSTRUCTION.

WING A BUILDING AREA = APPROXIMATELY 2,100 M2

FIRE PROTECTION: THE BUILDING IS NOT SPRINKLERED

CODE REVIEW:

BUILDING CODE: NATIONAL BUILDING CODE, 2015 (NBC)

MAJOR OCCUPANCY CLASSIFICATION, NBC 3.1.2.1.:

- "GROUP F3" - LOW HAZARD INDUSTRIAL OCCUPANCY

BUILDING CLASSIFICATION UNDER NBC 3.2.2.:

3.2.2.81: GROUP F, DIVISION 3, UP TO 6 STOREYS
THE BUILDING SHALL BE OF NON-COMBUSTIBLE CONSTRUCTION

THE REQUIRED FIRE SEPARATIONS ARE AS FOLLOWS:

- FLOOR ASSEMBLIES: 1 hr
- MEZZANINES: 1 hr
- ROOF ASSEMBLIES: 1 hr
- LOADBEARING WALLS, COLUMNS AND ARCHES: 1 hr

FIRE STOPS, NBC 3.1.9.1.:

- FIRE SEPARATIONS WITH A FIRE RESISTANCE RATING OF 1 hr MUST HAVE A FIRE STOP WITH A FT RATING OF 1 hr.

PUBLIC CORRIDOR SEPARATIONS, NBC 3.3.1.4.

- SINCE THE BUILDING IS OCCUPIED BY A SINGLE TENANT THERE ARE NO PUBLIC CORRIDORS.

PLUMBING FACILITIES, NBC 3.7.2.

THE REQUIRED QUANTITY OF WATER CLOSETS AND LAVATORIES WITH A WASHROOM IS PROVIDED BY TABLE 3.7.2.2-C FOR INDUSTRIAL OCCUPANCIES. REFER TO SUMMARY BELOW OF PLUMBING FACILITIES REQUIRED AND PROVIDED.

ACCESSIBILITY, NBC 3.8
EXISTING FACILITIES WILL BE MODIFIED TO PROVIDE MEET BARRIER FREE REQUIREMENTS FOR WC'S, LAVATORIES, URINALS AND SHOWERS.

**** per Table 3.7.2.2.-C for Industrial Occupancy (NBC Appendix list Laboratory as "F3" major occupancy)**

A-Wing: where North room = Women's Washroom and Locker Room, South Room = Men's Washroom and Locker Room

Floor	Area (m2)	NBC occupant load for WC calculations	Total number of occupants	Total number of men	Total number of women	Required for Men**					Required for Women**			Proposed for Men				Proposed for Women			
						Number of wc's incl. BF stall	Number of urinals	Number of Barrier Free Stalls	Number of Barrier Free Urinals	Number of lavatories	Number of wc's incl. BF stall	Number of Barrier Free Stalls	Number of lavatories	Number of wc's incl. BF stall	Number of Barrier Free Stalls	Number of Barrier Free Urinals	Number of lavatories	Number of wc's incl. BF	Number of Barrier Free Stalls	Number of lavatories	
1	2100	50 persons based	50	25	25	2	0	1	1	1	2	1	1	2	1	1	1	2	2	1	2
2	2100	on actual number	50	25	25	2	0	1	1	1	2	1	1	2	1	1	1	2	2	1	2
3	2100	of employees (25)	50	25	25	2	0	1	1	1	2	1	1	2	1	1	1	2	2	1	2
4	2100	men + 25 women)	50	25	25	2	0	1	1	1	2	1	1	2	1	1	1	2	2	1	2

4 PROJECT DESCRIPTION AND CODE REVIEW

A104 SCALE: 1:25

- REVIEW EXISTING CONDITIONS AND VERIFY ALL INFORMATION, DETAILS AND DIMENSIONS, REPORT ANY ERRORS, OMISSIONS AND DISCREPANCIES TO THE CONSULTANT PRIOR TO COMMENCEMENT OF THE WORK.
- IN THE EVENT OF CONFLICTING INFORMATION:
 - DRAWINGS AT A LARGER SCALE (EG, DETAILS) OVER-RIDE DRAWINGS AT A SMALLER DETAIL (EG, PLANS)
 - SPECIFICATIONS OVER-RIDE DRAWINGS
 - BRING DISCREPANCIES TO THE ATTENTION OF THE CONSULTANT BEFORE PROVIDING PRICING, OTHERWISE THESE CONDITIONS WILL BE DEEMED TO HAVE BEEN MET
- DO NOT SCALE DRAWINGS - IF IN DOUBT REQUEST CLARIFICATION!
- COORDINATE ALL WORK WITH INSTALLATION OF MECHANICAL AND ELECTRICAL SYSTEMS AND EQUIPMENT.
- FIRE-STOP ALL PENETRATIONS THROUGH FIRE SEPARATIONS TO MAINTAIN THE INTEGRITY OF THE FIRE SEPARATION.
- PATCH, REPAIR, MAKE GOOD ALL WALL, FLOOR AND CEILING SURFACES AT REMOVALS.
- PROTECT ALL EXISTING FURNITURE, FLOORING AND WALLS FROM DUST & DEBRIS WITH DUST PROOF HOARDING.
- COORDINATE REMOVALS WITH MECHANICAL AND ELECTRICAL.

DEMOLITION NOTES:

- CONFIRM LOCATIONS OF ALL EXISTING SERVICES INCLUDING ELECTRICAL, DATA, PLUMBING, COMMUNICATIONS AND SECURITY PRIOR TO CUTTING INTO EXISTING WALLS.
- COORDINATE NOISY OR DUST GENERATING WORK WITH BUILDING OWNER TO MINIMIZE DISRUPTION.

HARDWARE SET - H1

- 1 DOOR GRILL VENT
- 1 DOORSTOP
- 1 AUTOMATIC DOOR OPERATOR

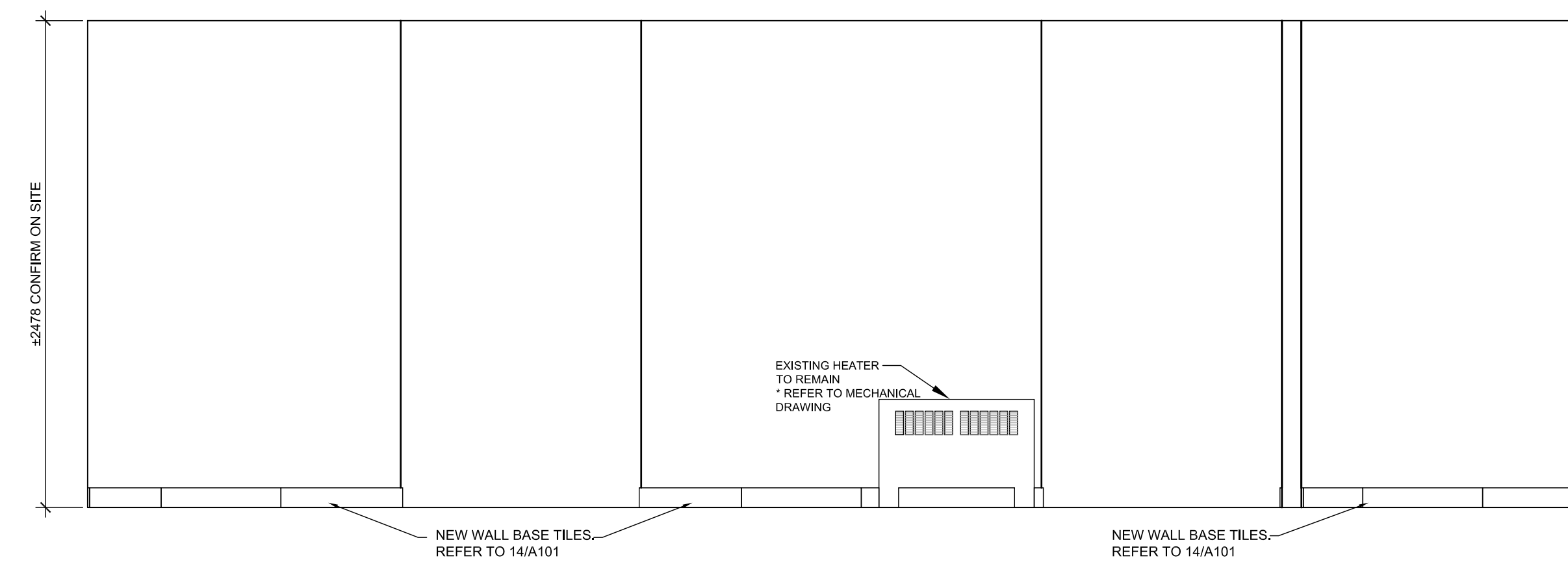
LEGEND

- RH: RIGHT HAND
- HM: HOLLOW METAL
- PS: PRESSED STEEL
- PT: PAINT
- EXIST: EXISTING

DOOR NO.	FROM		TO		DOOR							FRAME			ADDITIONAL INFORMATION
	ROOM NO.	NAME	ROOM NO.	NAME	SIZE (WxH)	SWING	TYPE	MATL.	FINISH	HDWR SET	FRAME TYPE	MATL.	FINISH		
D T01	100-S	CORRIDOR	T01	MEN'S WASHROOM	965x2135	RH	EXIST	EXIST	PT*	H1	EXIST	EXIST	PT*	* NEW PAINT FINISH REMOVE DOOR CLOSER, SIGNAGE TO REMAIN	
D T02	100-N	CORRIDOR	T04	WOMEN'S WASHROOM	965x2135	RH	EXIST	EXIST	PT*	H1	EXIST	EXIST	PT*	* NEW PAINT FINISH REMOVE DOOR CLOSER, SIGNAGE TO REMAIN	
D T01	100-S	CORRIDOR	T01	MEN'S WASHROOM	965x2135	RH	EXIST	EXIST	PT*	H1	EXIST	EXIST	PT*	* NEW PAINT FINISH REMOVE DOOR CLOSER, SIGNAGE TO REMAIN	
D T02	100-N	CORRIDOR	T04	WOMEN'S WASHROOM	965x2135	RH	EXIST	EXIST	PT*	H1	EXIST	EXIST	PT*	* NEW PAINT FINISH REMOVE DOOR CLOSER, SIGNAGE TO REMAIN	
D T01	100-S	CORRIDOR	T01	MEN'S WASHROOM	965x2135	RH	EXIST	EXIST	PT*	H1	EXIST	EXIST	PT*	* NEW PAINT FINISH REMOVE DOOR CLOSER, SIGNAGE TO REMAIN	
D T02	100-N	CORRIDOR	T04	WOMEN'S WASHROOM	965x2135	RH	EXIST	EXIST	PT*	H1	EXIST	EXIST	PT*	* NEW PAINT FINISH REMOVE DOOR CLOSER, SIGNAGE TO REMAIN	
D T01	100-S	CORRIDOR	T01	MEN'S WASHROOM	965x2135	RH	EXIST	EXIST	PT*	H1	EXIST	EXIST	PT*	* NEW PAINT FINISH REMOVE DOOR CLOSER, SIGNAGE TO REMAIN	
D T02	100-N	CORRIDOR	T04	WOMEN'S WASHROOM	965x2135	RH	EXIST	EXIST	PT*	H1	EXIST	EXIST	PT*	* NEW PAINT FINISH REMOVE DOOR CLOSER, SIGNAGE TO REMAIN	

2 DOOR AND FRAME SCHEDULE, DOOR TYPES, DOOR HARDWARE

A104 SCALE: 1:25

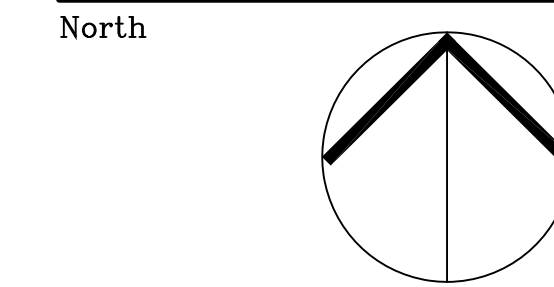


1 MEN'S WEST ELEVATION

A104 SCALE: 1:25

3 PROJECT NOTES

A104 SCALE: 1:25



Revisions

No.	By	Description	Date
01	ZAS	ISSUED FOR TENDER	29 SEP. 2017

Project

CFIA-OTTAWA LABORATORY FALLOWFIELD, A-WING WASHROOM REFURBISHMENT OTTAWA, ON

Drawing

MEN'S W.R. ELEVATIONS
DOOR SCHEDULE
CODE REVIEW

Scale AS NOTED Stamp

Drawn AK

Checked JS

Project No. 17-166

Drawing No.

Date September 29, 2017

A104