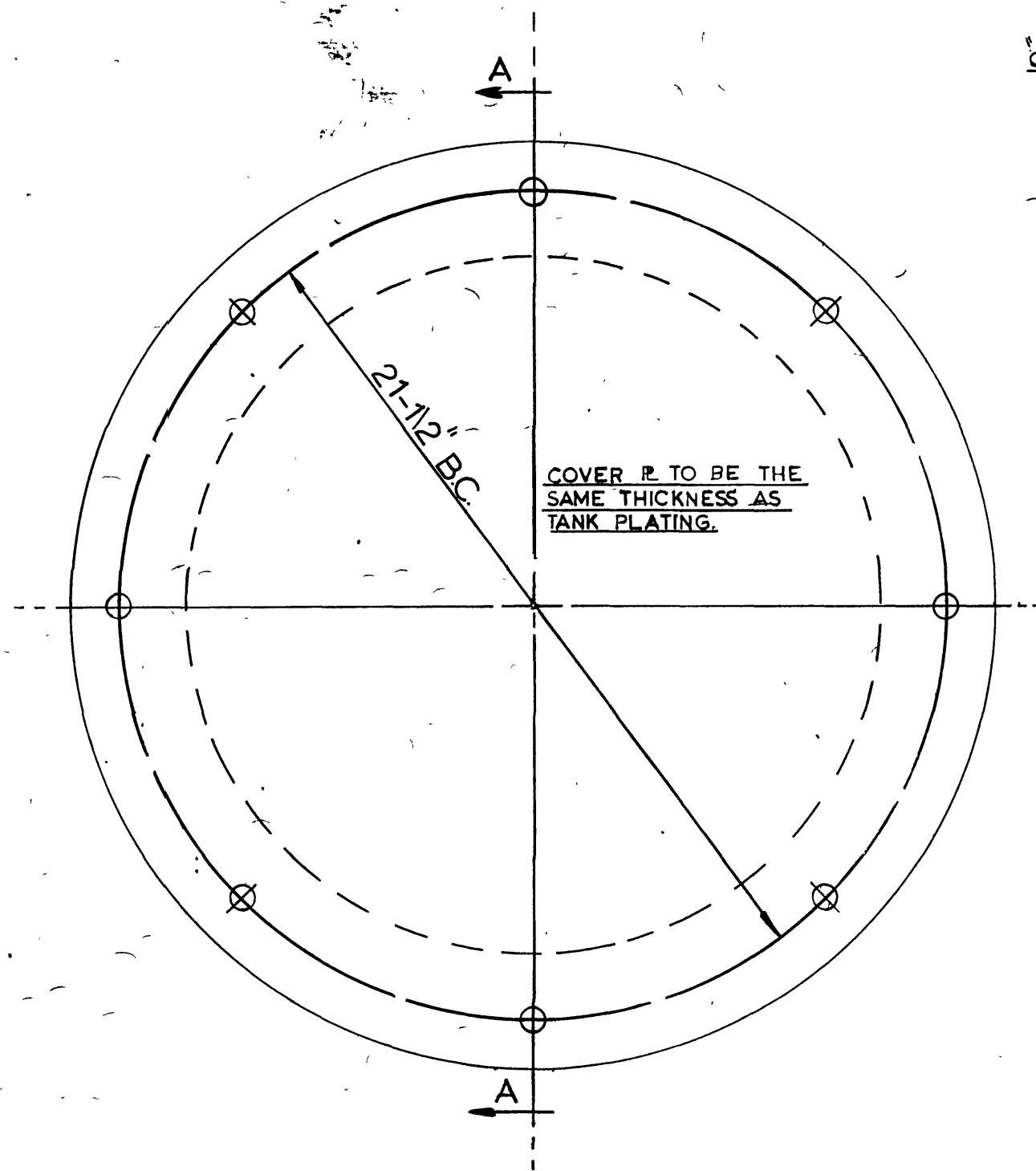


SHT. 4

703/04

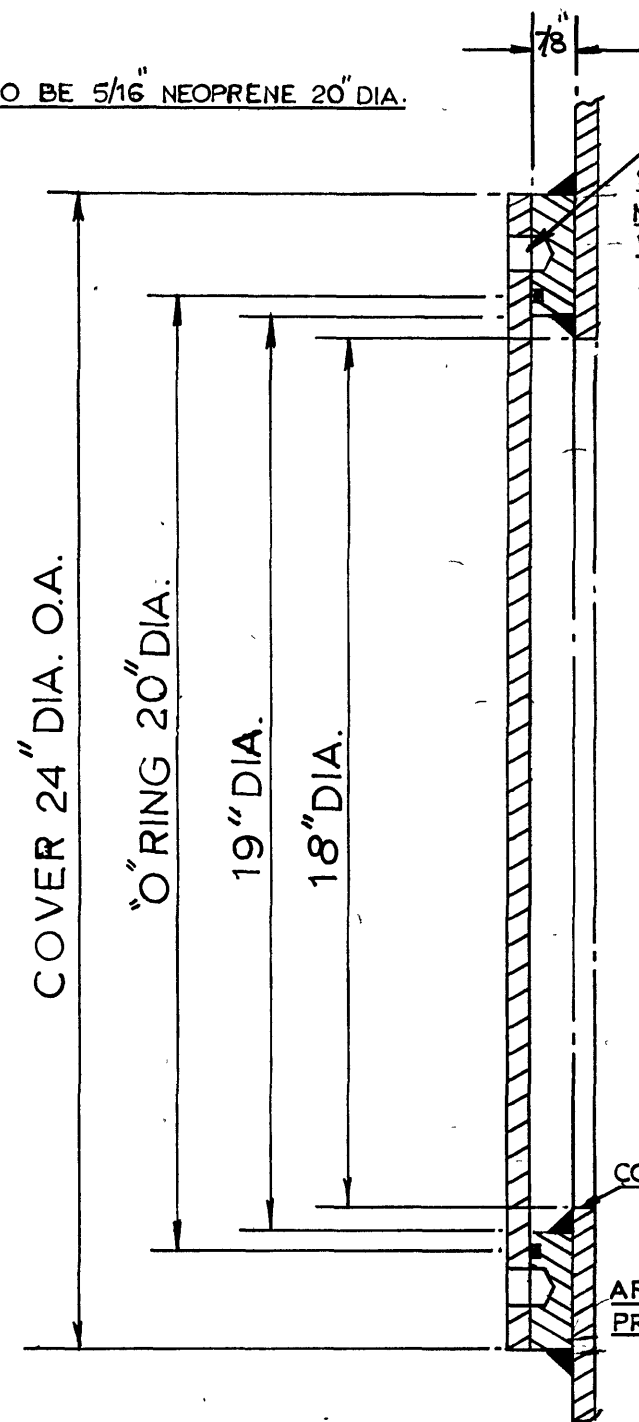


COVER P. TO BE THE
SAME THICKNESS AS
TANK PLATING.

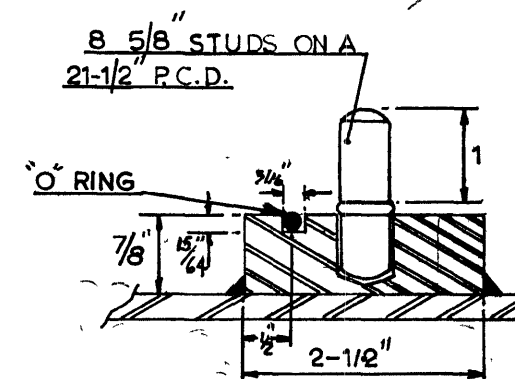
MANHOLE COVER

SCALE: 1/4" = 1"

O RING TO BE 5/16" NEOPRENE 20" DIA.



DRILLED & TAPPED FOR
STUDS 11/16" DEEP.
NUTS TO BE TREATED
WITH NEVERFREEZE
OR EQUIVALENT.



SECTION THRU SUPPORT
RING. SCALE: 1/2" = 1"

CORNERS TO BE BUFFED

APPROVED FOR TANKS WHERE THE REQUIRED TESTING
PRESSURE IS EQUAL OR SMALLER THAN 28 LB. SQ. IN.

SECTION A-A

W.T. & O.T. O RING TYPE
MANHOLE