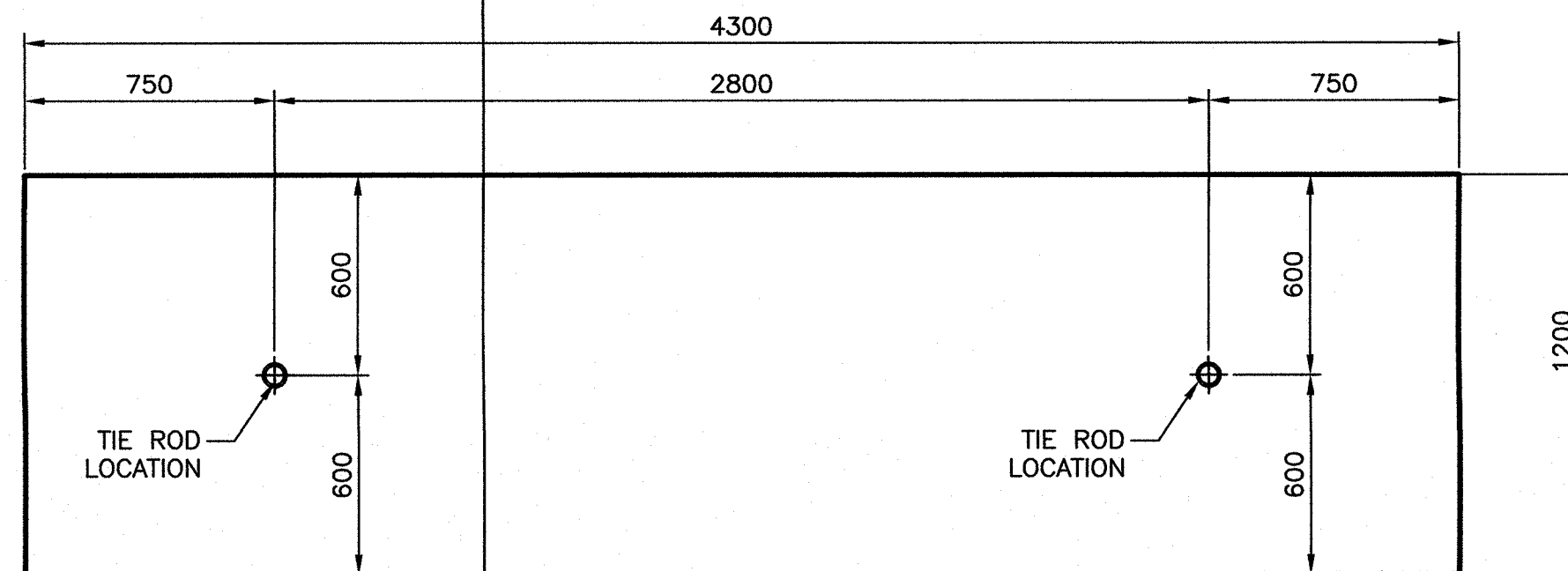
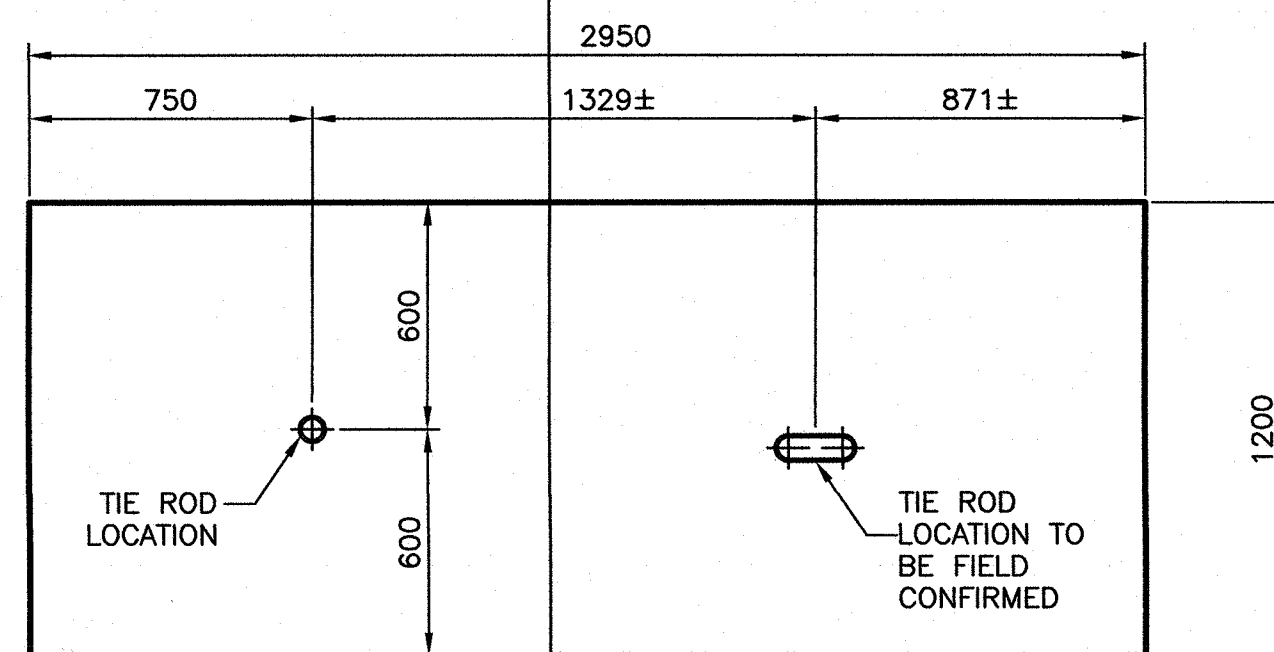


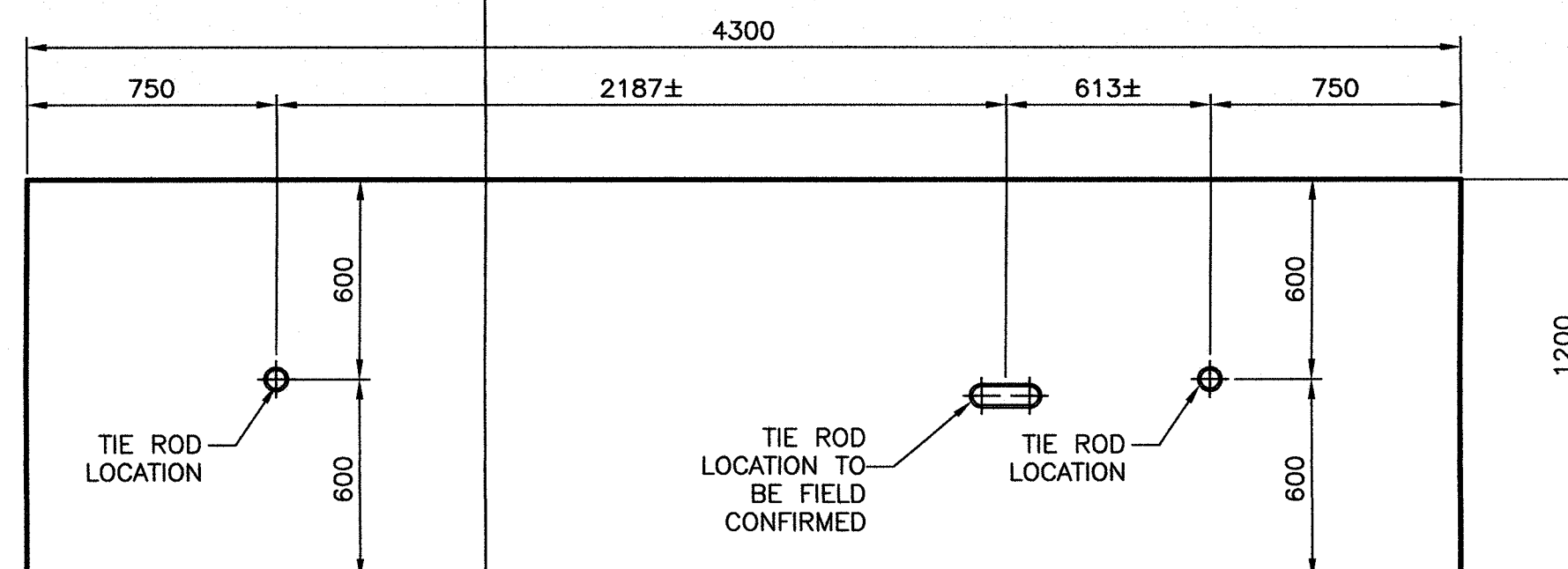
SINGLE TIE ROD ANCHOR - TYPE 1



DOUBLE TIE ROD ANCHOR - TYPE 2



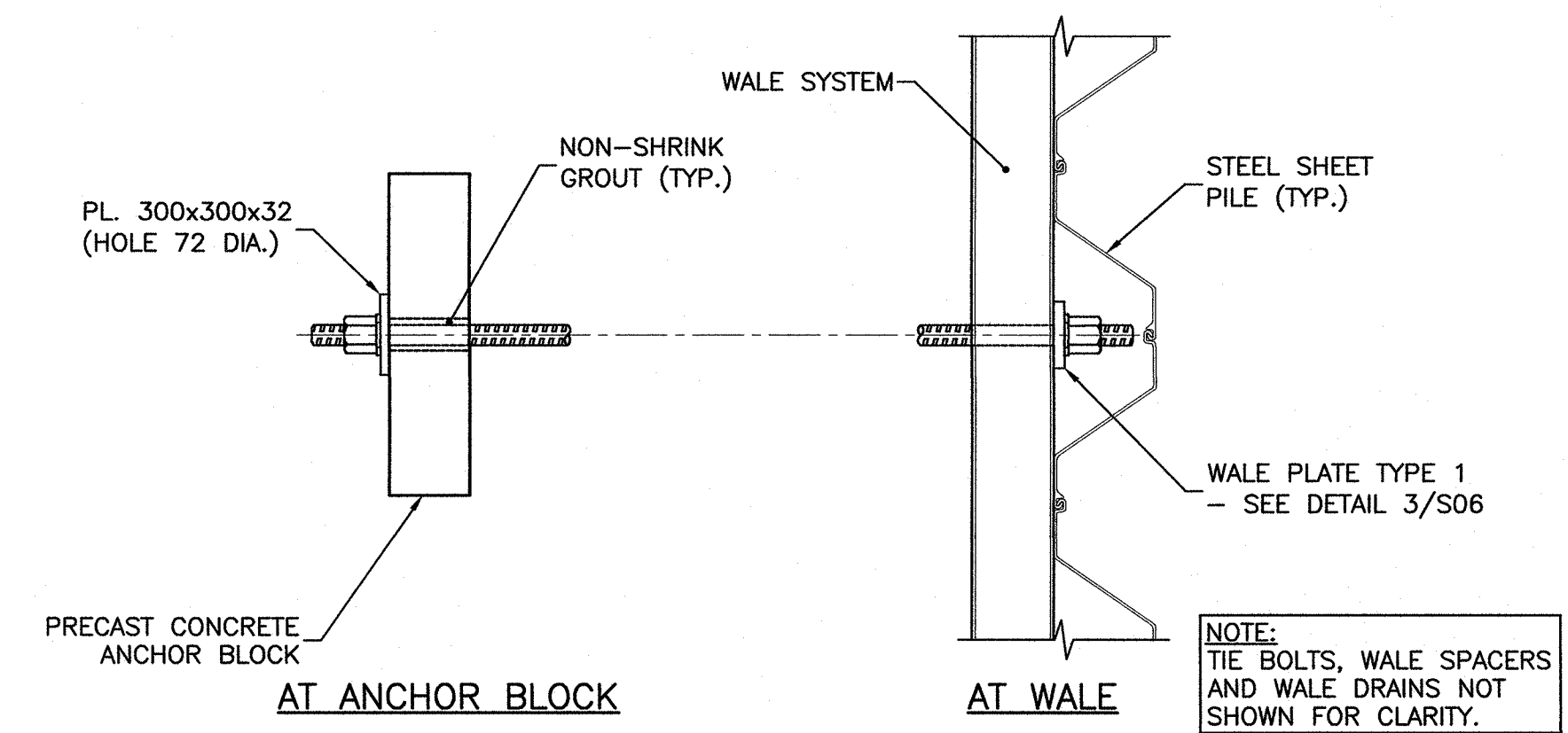
DOUBLE TIE ROD ANCHOR - TYPE 3



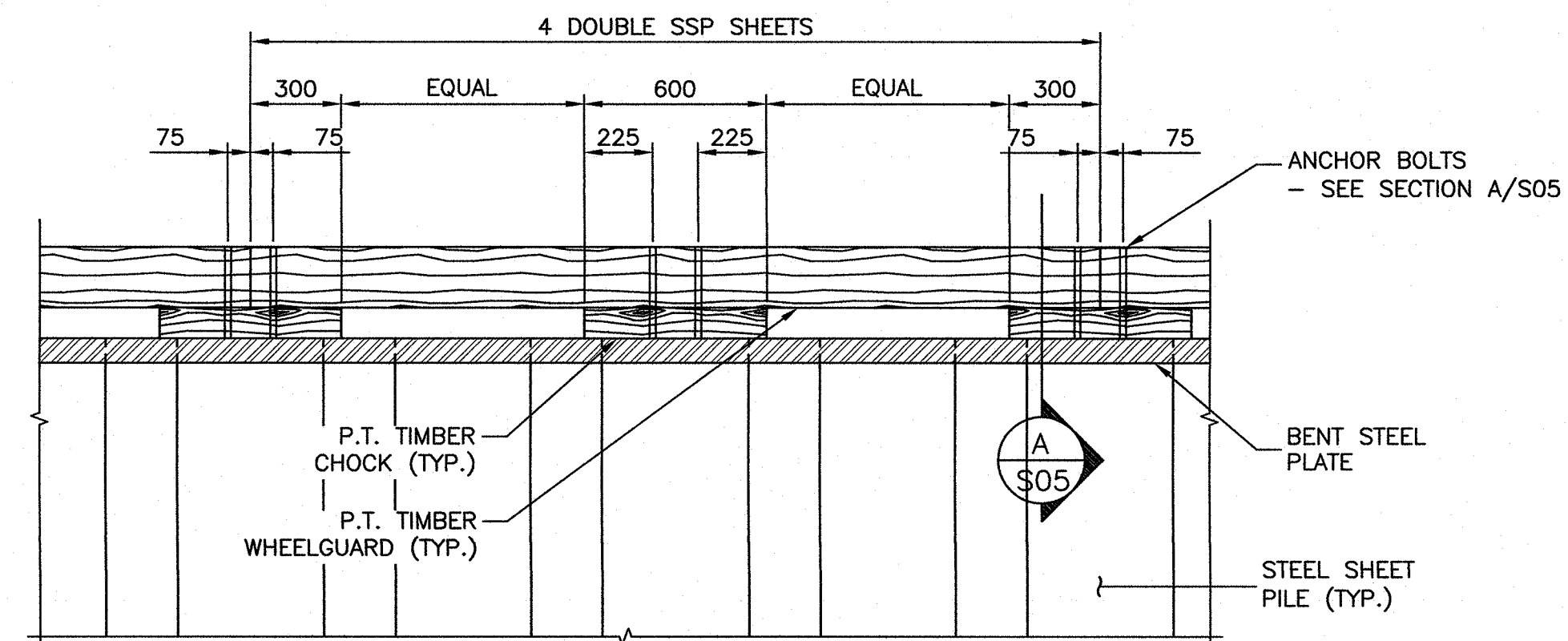
TRIPLE TIE ROD ANCHOR - TYPE 4

NOTE:  
CONCRETE COVER FOR REINFORCEMENT IS  
75mm ON ALL FACES AND 100mm AT  
CORNERS UNLESS NOTED OTHERWISE.

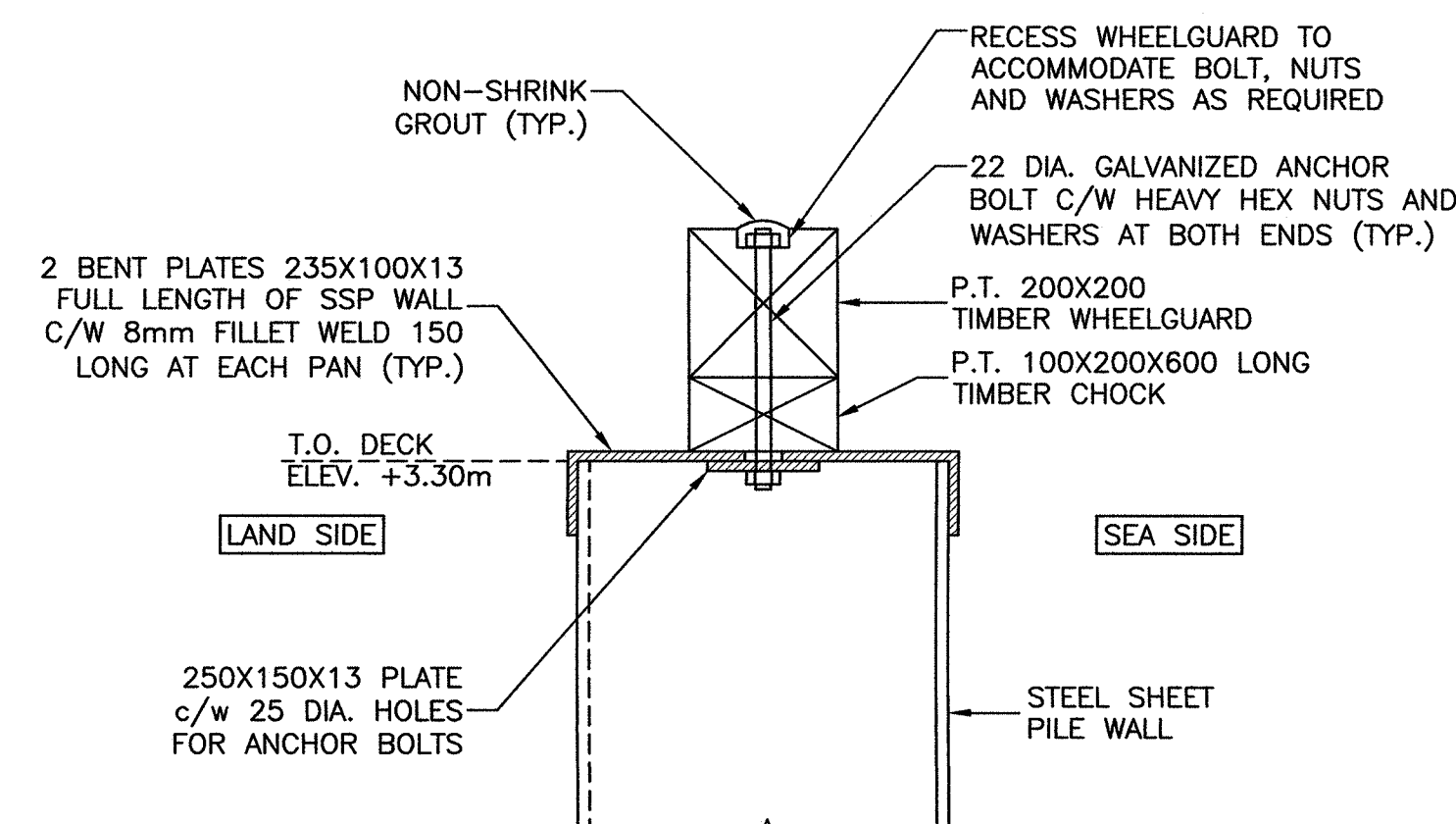
DETAIL - PRECAST ANCHOR WALL  
SCALE : 1:20



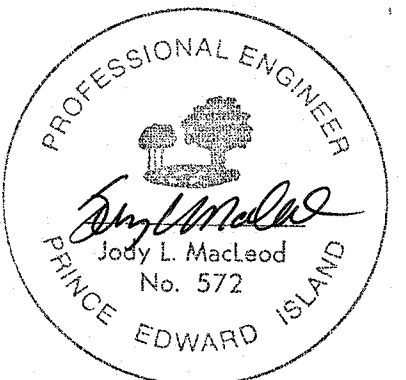
DETAIL - TIE ROD ANCHORAGE  
SCALE : 1:25



DETAIL - TIMBER WHEELGUARD  
SCALE : 1:20



SECTION - TIMBER WHEELGUARD CONNECTION  
SCALE : 1:10



0	ISSUED FOR TENDER	OCT. 19 2017
revisions		date
project		projet

NORTH LAKE  
BREAKWATER 305  
RECONSTRUCTION  
NORTH LAKE HARBOUR  
KINGS COUNTY, P.E.I.

drawing dessin

CLOSURE WALL  
SECTION AND DETAILS

designed J. MACLEOD conçu

date AUG. 2017

drawn S. MALLARD dessiné

date AUG. 2017

approved approuvé

date

Tender PWGSC Project Manager Administrateur de projets TPSGC

project number no. du projet

R.088162.001

drawing no. no. du dessin

S05