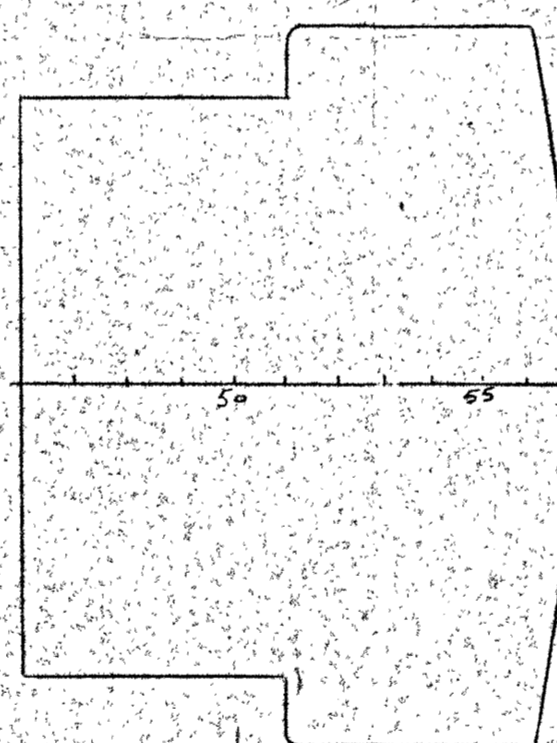


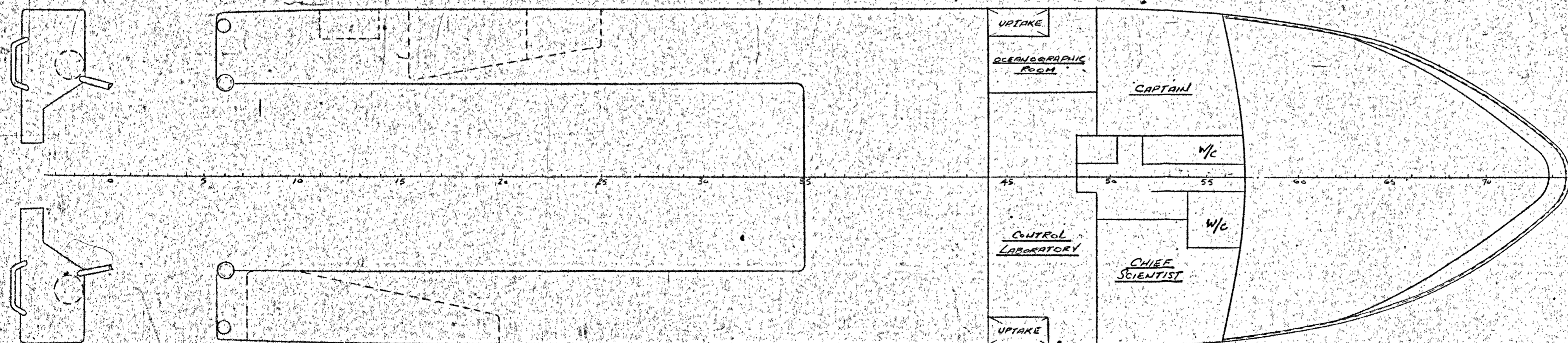
PROFILE



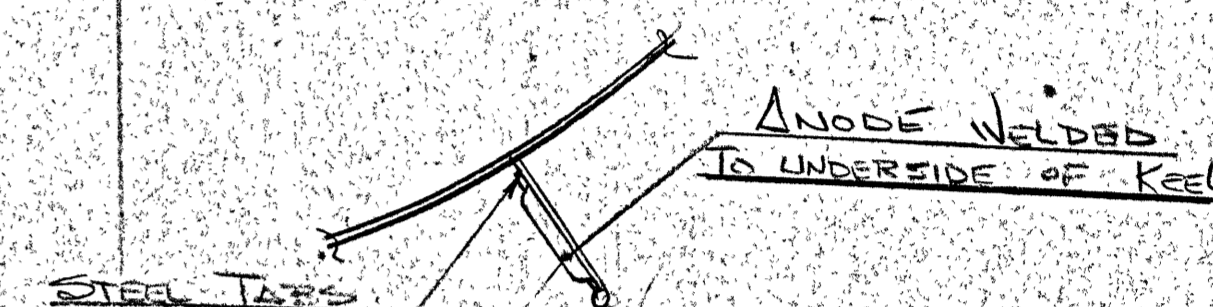
BRIDGE DECK



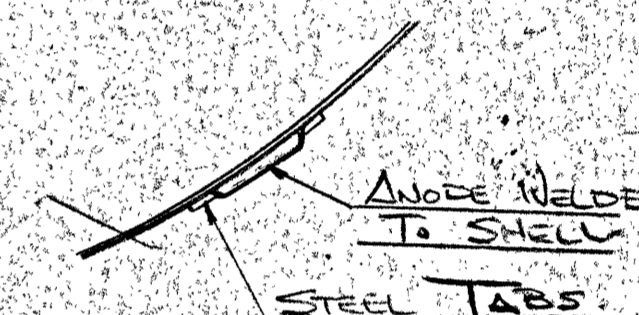
WHEELHOUSE TOP



FORECASTLE DECK



ANODES TWO BILGE KEEL



TYPICAL ANODE DETAIL

NOTES: ALL ANODES TO BE YARD STANDARD ZINC
26 LB EACH (FURNISHED)
ALL ANODES TO BE WELDED TO HULL
EXCEPT TWO FUEL TANKS
ANODE TO BE PLACED BEHIND
SHELL TRANSDUCER BLISTERS &
SONAR

AS FITTED

REV. NO.	DATE	D			
		C			
		B			
		A			
LLOYDS		REV.	BY	REVISIONS	DATE
C.S.I.					
OWNERS					
Q.A.		FERGUSON INDUSTRIES LIMITED			
EST.		N.S.			
PURCHASING		PICTOU			
ELECT.		CONTRACT 165-0" FISHERIES, RESEARCH TRAWLER			
CARP. JOIN.		POSITION OF SACRIFICIAL ANODES			
PIPE					
MACHINE					
MAR. FITTERS					
LOFT					
PLATE					
ST. ERECT					
WELDING					
OUTFITTING					
SHIP REPAIR					
TIN SHOP					
PLANNING					
APPROVED		DATE	DRAWN BY	SCALE	DATE
OWNED		20-11-80	311	1/8" = 1'-0"	27-10-80
CHECKED				DRAWING NO.	REV
APPROVED				181/01	SHT OF 1