



RETURN BIDS TO:

RETOURNER LES SOUMISSIONS À:

Bid Receiving Public Works and Government
Services Canada/Réception des soumissions Travaux
publics et Services gouvernementaux Canada
800 Burrard Street, Room 219
800, rue Burrard, pièce 219
Vancouver
British Columbia
V6Z 0B9
Bid Fax: (604) 775-9381

SOLICITATION AMENDMENT MODIFICATION DE L'INVITATION

The referenced document is hereby revised; unless otherwise
indicated, all other terms and conditions of the Solicitation
remain the same.

Ce document est par la présente révisé; sauf indication contraire,
les modalités de l'invitation demeurent les mêmes.

Comments - Commentaires

Vendor/Firm Name and Address
Raison sociale et adresse du
fournisseur/de l'entrepreneur

Issuing Office - Bureau de distribution
Public Works and Government Services Canada - Pacific
Region
800 Burrard Street, Room 219
800, rue Burrard, pièce 219
Vancouver
British C
V6Z 0B9

Title - Sujet Fire Protection System Installation	
Solicitation No. - N° de l'invitation F1571-175049/A	Amendment No. - N° modif. 002
Client Reference No. - N° de référence du client F1571-175049	Date 2017-11-28
GETS Reference No. - N° de référence de SEAG PW-\$PWY-028-8226	
File No. - N° de dossier PWY-7-40226 (028)	CCC No./N° CCC - FMS No./N° VME
Solicitation Closes - L'invitation prend fin at - à 02:00 PM on - le 2017-11-30	
Time Zone Fuseau horaire Pacific Standard Time PST	
F.O.B. - F.A.B. Plant-Usine: <input type="checkbox"/> Destination: <input checked="" type="checkbox"/> Other-Autre: <input type="checkbox"/>	
Address Enquiries to: - Adresser toutes questions à: Lam (PWY), Tian	Buyer Id - Id de l'acheteur pwy028
Telephone No. - N° de téléphone (604) 363-7968 ()	FAX No. - N° de FAX (604) 775-6633
Destination - of Goods, Services, and Construction: Destination - des biens, services et construction: DFO - Bella Bella Small Craft Harbour - Bella Bella, BC	

Instructions: See Herein

Instructions: Voir aux présentes

Delivery Required - Livraison exigée	Delivery Offered - Livraison proposée
Vendor/Firm Name and Address Raison sociale et adresse du fournisseur/de l'entrepreneur	
Telephone No. - N° de téléphone Facsimile No. - N° de télécopieur	
Name and title of person authorized to sign on behalf of Vendor/Firm (type or print) Nom et titre de la personne autorisée à signer au nom du fournisseur/ de l'entrepreneur (taper ou écrire en caractères d'imprimerie)	
Signature	Date

Solicitation No. - N° de l'invitation
F1571-175049/A

Amd. No. - N° de la modif.
002

Buyer ID - Id de l'acheteur
pwy028

Client Ref. No. - N° de réf. du client

File No. - N° du dossier CCC No./N°

CCC - FMS No./N° VME

Les documents en français seront disponibles sur demande.

The Solicitation Amendment 002 is raised to issue the Revised Addendum 001 with related drawings. This Revised Addendum 001 will supersede the previously issued Addendum 001.

Please find the Revised Addendum 001 and related drawings herein.

All other terms and conditions remain unchanged.

**Bella Bella (Martin’s Cove) Harbour, Fire Protection System Installation– 2017
Revised Addendum 001**

The following changes / clarifications in the tender documents are effective immediately. This Addendum will form part of the Contract Documents.

Response to Bidders’ Inquiries:

Please find below a response to bidder’s inquiries received to date.

1. Does the fire department connection exist on the dock by the bottom of the gangway, and if not where is it?

Answer:

Drawing number “FP1 OF 4” shows that the fire department connection will be located on the float.

Drawing number “FP2 OF 4” also shows the location of the fire department connection. Refer to the legend on the drawing and please recognize that the schematic symbols on the drawing are used to represent component of the fire protection system and are therefore not to scale.

Note that the water supply connection from the nearby fire hydrant to the fire department connection on the float is meant to occur at the time of a fire by the fire department.

2. Could you confirm that we are laying the pipes under the decking on the floats?

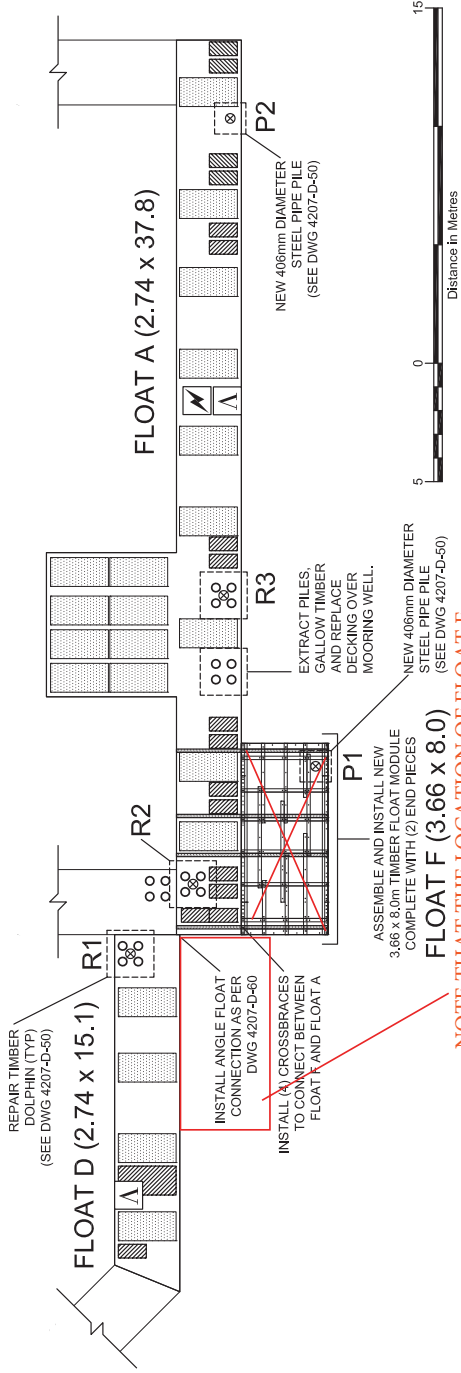
Answer:

Yes, the fire line pipes are to be installed under the decking of the floats. The fire line pipes shall be side mounted on the float below the decking.

Please refer to the attached reference drawings for typical details of the float construction at the Bella Bella (Martin’s Cove) Harbour. Note that expanded metal mesh walkway tread has been installed on the decking.

END OF REVISED ADDENDUM 001

PLAN VIEW: FLOATS A, D & E



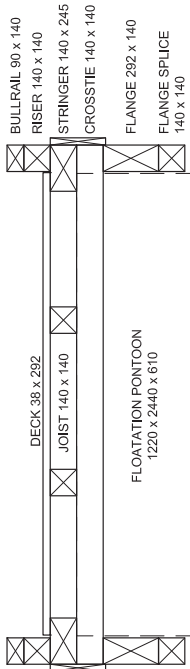
DRAWING NOTES

1. NOT AN AS-BUILT DRAWING.
2. REPAIR LOCATIONS SHOWN FOR ILLUSTRATION PURPOSES.
3. ALL DIMENSIONS AND REPAIR LOCATIONS TO BE CONFIRMED BY THE CONTRACTOR.
4. ALL FLOAT MODULES TO BE ASSEMBLED AS PER REFERENCE DRAWINGS:
FM12-END-200: 3.66m (12ft) WIDE END PIECE ASSEMBLY
FM12-END-201: 3.66m (12ft) WIDE END PIECE MEMBERS
FM12-ST-000: 3.66m (12ft) WIDE MODULE ASSEMBLY
FM12-ST-001: 3.66m (12ft) WIDE MODULE MEMBERS

REPAIR SCHEDULE 1

COMPONENT	MATERIAL	DIMENSIONS (mm)	QUANTITY	LOCATION/COMMENTS
4-PILE DOLPHIN	TIMBER	NA	1	EXTRACT AT LOCATION SHOWN
GALLOW BEAM	TIMBER	305 x 305 x 5000	1	REMOVE PLUS HARDWARE.
4-PILE DOLPHIN REPAIR WITH CENTER STEEL PILE (R)			3	REPAIR IN LOCATIONS SHOWN.
STEEL MOORING PILE INSTALLATION (P)			2	INSTALL IN LOCATIONS SHOWN.
FLOAT F - NEW 3.66 x 8.0m TIMBER FLOAT MODULE			1	ASSEMBLE AND INSTALL.
CROSS-TIES	CREO	140 x 140 x 6400	4	INSTALL AS SHOWN.
DECKING	ACZA	38 x 292 x 2440	5 PLANKS	REPLACE WHERE SHOWN.
FLOATATION A	FIBRGLAS	610 x 1200 x 2440	1 PONTOON	INSTALL/REPLACE AS SHOWN.
FLOATATION B	PLASTIC	610 x 580 x 1180	17 PONTOONS	INSTALL/REPLACE AS SHOWN.
FASCIA	ACZA	292 x 38 x TO SUIT	125 METRES	REPLACE ALL EXISTING
WALKWAY TREAD	STEEL	1220 WIDE	50 METRES	INSTALL ON TOP OF DECK
FLOAT CONNECTION	STEEL	AS SPECIFIED	1	INSTALL AS SHOWN.

TYPICAL SECTION: FLOATS A & D



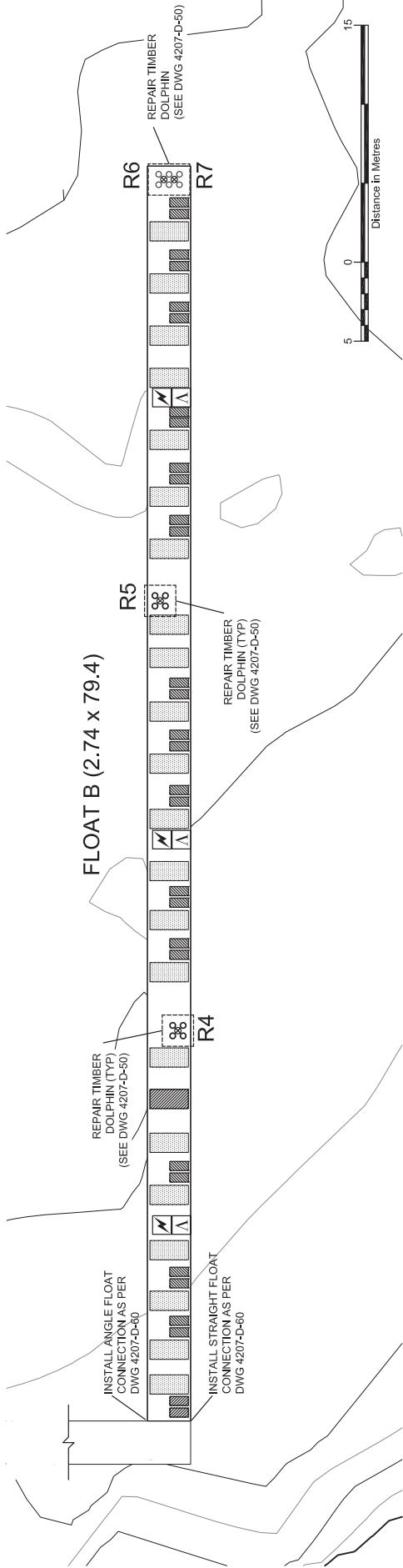
LEGEND

- EXISTING FLOATATION
- NEW FLOATATION PONTOON A (610 x 1220 x 2440)
- NEW FLOATATION PONTOON B (610 x 580 x 1180)
- NEW 406mm DIAMETER STEEL PIPE PILE
- EXISTING 4-PILE TIMBER DOLPHIN
- LAMP STANDARD
- TRANSFORMER
- ELECTRICAL RECEPTACLE

FOR REFERENCE ONLY.
THIS CONSTRUCTION HAS
BEEN COMPLETED.

Client		Fisheries and Oceans Pêches et Océans Small Craft Harbours Branch		Author		SEA FORCE CONSULTANTS INC.	
Ref. No.		REFERENCE		Checked by		PROJECT	
				Drawn by		FLOATS A, D & F LAYOUT	
				Date		FLOAT RECONSTRUCTION	
				Scale		BELLA BELLA SMALL CRAFT HARBOUR	
				Inspectors		BELLA BELLA, BRITISH COLUMBIA	
				Page		DWG. No. 4207 -D-10.3	

PLAN VIEW: FLOAT B



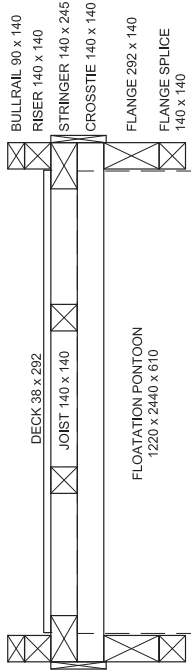
DRAWING NOTES

1. NOT AN AS-BUILT DRAWING.
2. REPAIR LOCATIONS SHOWN FOR ILLUSTRATION PURPOSES.
3. ALL DIMENSIONS AND REPAIR LOCATIONS TO BE CONFIRMED BY THE CONTRACTOR.

REPAIR SCHEDULE 2

COMPONENT	MATERIAL	DIMENSIONS (mm)	QUANTITY	LOCATION/COMMENTS
4-PILE DOLPHIN REPAIR WITH CENTER STEEL PILE (R)			4	REPAIR IN LOCATIONS SHOWN.
FLOATATION A	FIBERGLAS	610 x 1200 x 2440	1 PONTOONS	INSTALL/REPLACE AS SHOWN.
FLOATATION B	PLASTIC	610 x 580 x 1180	30 PONTOONS	INSTALL/REPLACE AS SHOWN.
FASCIA	ACZA	292 x 38 x TO SUIT	160 METRES	REPLACE ALL EXISTING.
WALKWAY TREAD	STEEL	1220 WIDE	78 METRES	INSTALL ON TOP OF DECK.
FLOAT CONNECTION	STEEL	AS SPECIFIED	2	INSTALL AS SHOWN.

TYPICAL SECTION: FLOAT B



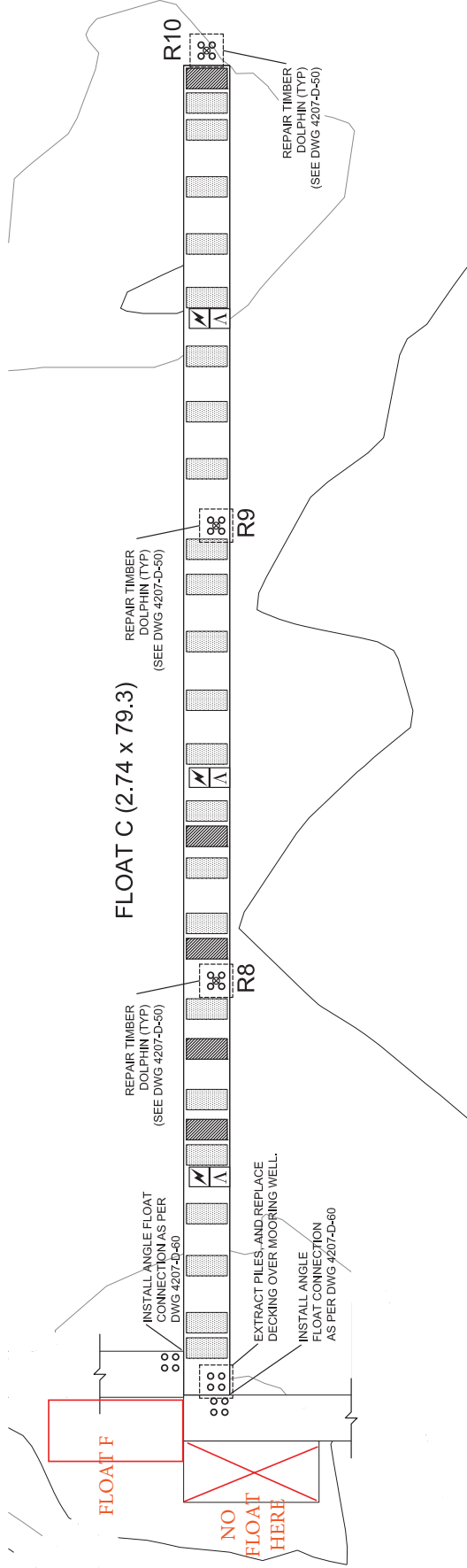
LEGEND

- EXISTING FLOATATION
- NEW FLOATATION PONTOON A (610 x 1220 x 2440)
- NEW FLOATATION PONTOON B (610 x 580 x 1180)
- NEW 406mm DIAMETER STEEL PIPE PILE
- EXISTING 4-PILE TIMBER DOLPHIN
- LAMP STANDARD
- TRANSFORMER
- ELECTRICAL RECEPTACLE

FOR REFERENCE ONLY.
THIS CONSTRUCTION HAS
BEEN COMPLETED.

Client		Fisheries Pêches et Océans		Author		PROJECT	
REFERENCE		Small Craft Harbours Branch		This document contains restricted and/or privileged information and is for the use of the use by the party with whom Sea Force Consultants Inc. has entered into a contract. This document is to be used only for the purpose of the project and no other use of the information in this document may be made without the written consent of Sea Force Consultants Inc. in form or by any means, electronic or mechanical, including photocopying, recording, or by any information storage and retrieval system.		FLOAT B LAYOUT FLOAT RECONSTRUCTION BELLA BELLA SMALL CRAFT HARBOUR BELLA BELLA, BRITISH COLUMBIA	
Ref. No.				Checked by	J.E.		
			Drawn by	D.B.			
			Date	27-MAR-15			
			Scale	1:1000			
			Inspectors	D.B. WP			
			Pages	11 x 17			
				DWG. No.		4207 -D- 20. 3	

PLAN VIEW: FLOAT C



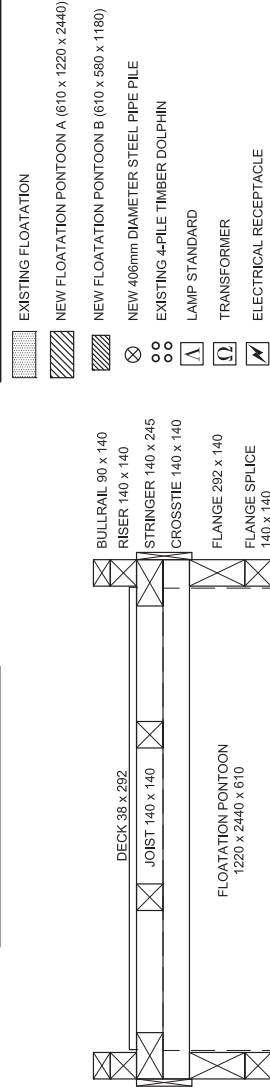
DRAWING NOTES

- NOT AN AS-BUILT DRAWING.
- REPAIR LOCATIONS SHOWN FOR ILLUSTRATION PURPOSES.
- ALL DIMENSIONS AND REPAIR LOCATIONS TO BE CONFIRMED BY THE CONTRACTOR.

REPAIR SCHEDULE 3

COMPONENT	MATERIAL	DIMENSIONS (mm)	QUANTITY	LOCATION/COMMENTS
4-PILE DOLPHIN	TIMBER	NA	1	EXTRACT AT LOCATION SHOWN.
4-PILE DOLPHIN REPAIR WITH CENTER STEEL PILE (R)			3	REPAIR IN LOCATIONS SHOWN.
DECKING	ACZA	38 x 292 x 2440	5 PLANKS	REPLACE WHERE SHOWN.
FLOATATION A	FIBERGLAS	610 x 1200 x 2440	5 PONTOONS	INSTALL/REPLACE AS SHOWN.
FASCIA	ACZA	292 x 38 x TO SUIT	160 METRES	REPLACE ALL EXISTING
WALKWAY TREAD	STEEL	1220 WIDE	78 METRES	INSTALL ON TOP OF DECK
FLOAT CONNECTION	STEEL	AS SPECIFIED	2	INSTALL AS SHOWN.

TYPICAL SECTION: FLOAT C



LEGEND

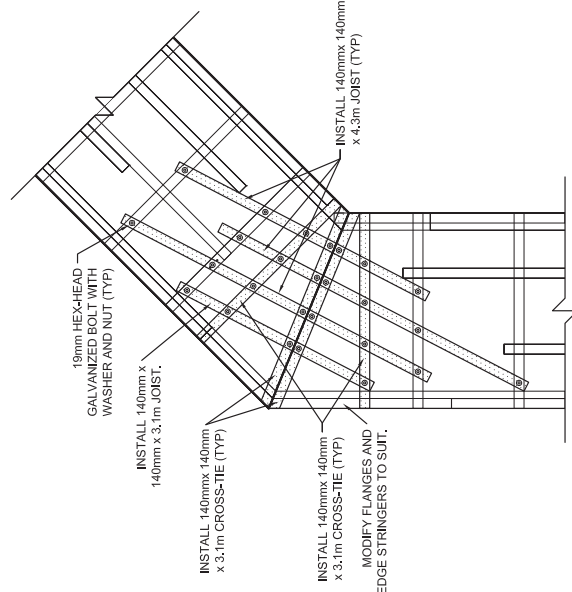
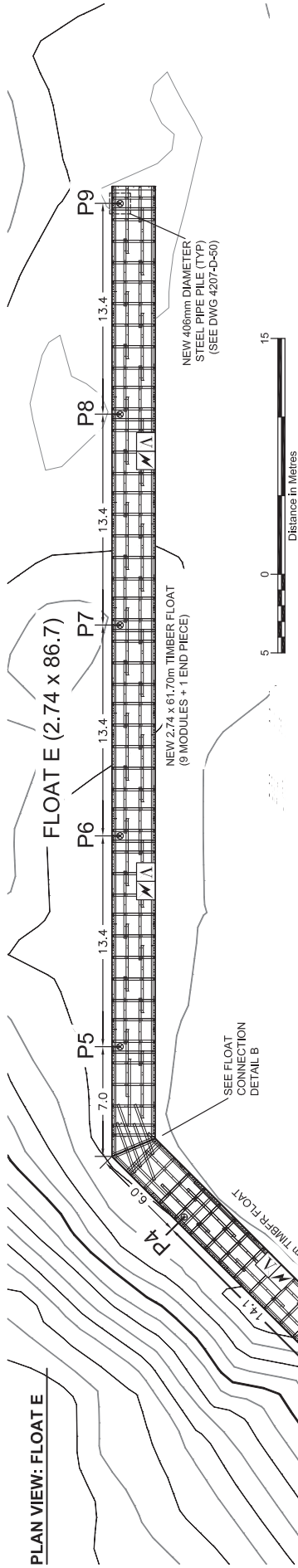
- EXISTING FLOATATION
- NEW FLOATATION PONTOON A (610 x 1220 x 2440)
- NEW FLOATATION PONTOON B (610 x 580 x 1180)
- NEW 406mm DIAMETER STEEL PIPE PILE
- EXISTING 4-PILE TIMBER DOLPHIN
- LAMP STANDARD
- TRANSFORMER
- ELECTRICAL RECEPTACLE

FOR REFERENCE ONLY.
THIS CONSTRUCTION HAS
BEEN COMPLETED.

Client		Author		Project	
Fisheries and Oceans Small Craft Harbours Branch		SEA FORCE		FLOAT C LAYOUT FLOAT RECONSTRUCTION BELLA BELLA SMALL CRAFT HARBOUR BELLA BELLA, BRITISH COLUMBIA	
Ref. No.		REFERENCE		DWG. No. 4207 -D-30.3	
SEA FORCE CONSULTANTS INC.		This document contains restricted information and has been prepared solely for use by the party with whom Sea Force Consultants Inc. has entered into a contract. This document is to be used only for the project and location specified herein. No part of the information in this document may be copied, reproduced, stored in a retrieval system, or transmitted in any form or by any means, electronic, mechanical, photocopying, recording, or by any information storage and retrieval system, without the prior written permission of Sea Force Consultants Inc.		Checked by J.E. Drawn by DB Date 27-MAR-15 Scale 1:1000 Inspectors DB, WP Pages 11 x 17	

PLAN VIEW: FLOAT E

FLOAT E (2.74 x 86.7)

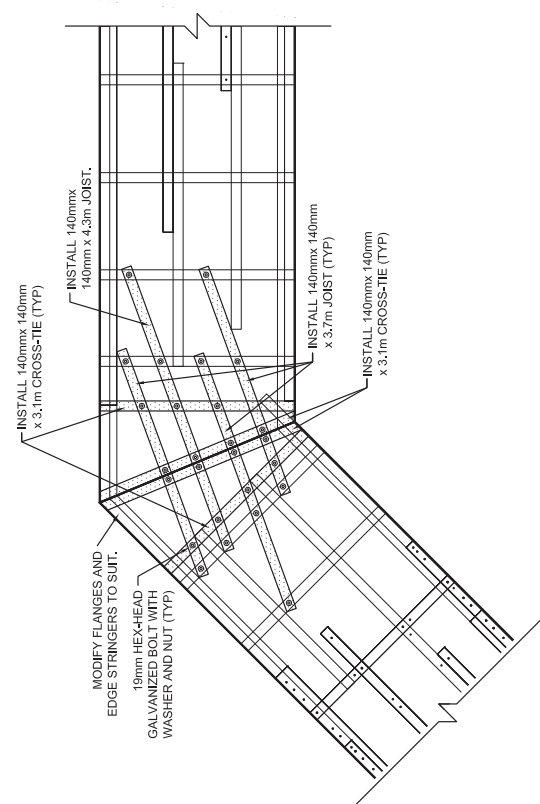


DRAWING NOTES

1. NOT AN AS-BUILT DRAWING.
2. DECKING AND OTHER MEMBERS NOT SHOWN FOR CLARITY.
3. ALL FLOAT MODULES TO BE ASSEMBLED AS PER REFERENCE DRAWINGS:
FMS-END-200: 2.74m (9ft) WIDE END PIECE ASSEMBLY
FMS-END-201: 2.74m (9ft) WIDE END PIECE MEMBERS
FMS-ST-000: 2.74m (9ft) WIDE MODULE ASSEMBLY
FMS-ST-001: 2.74m (9ft) WIDE MODULE MEMBERS
WITH 84 m OF WALKWAY TREAD AS PER DWG 4900-DD-01.3 AND 174m OF NEW 38mm x 292m ACZA FASCIA TIMBER.
4. CROSS-TIES AND CONNECTION JOISTS AS SHOWN TO BE INCLUDED WITH OWNER SUPPLIED FLOAT MODULE MATERIALS AND MODIFIED IN ORDER TO MAKE CONNECTIONS SHOWN.


FOR REFERENCE ONLY.
THIS CONSTRUCTION HAS
BEEN COMPLETED.

FLOAT CONNECTION DETAIL A



FLOAT CONNECTION DETAIL B

Ref. No.	REFERENCE
SEA FORCE CONSULTANTS INC.	



Client

Fisheries and Oceans
Small Craft
Harbours Branch

Pêches et Océans
Small Craft
Harbours Branch

This document contains restricted information and has been prepared solely for use by the party with whom Sea Force Consultants Inc. has entered into a contract. This document is to be used only for the project and no part of the information in this document may be copied, reproduced, or otherwise used without the written permission of Sea Force Consultants Inc.

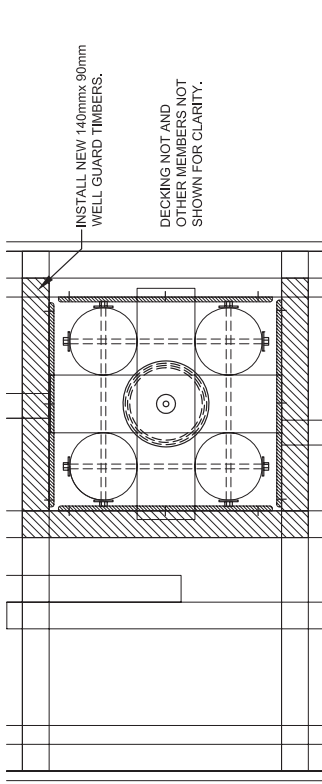
Author



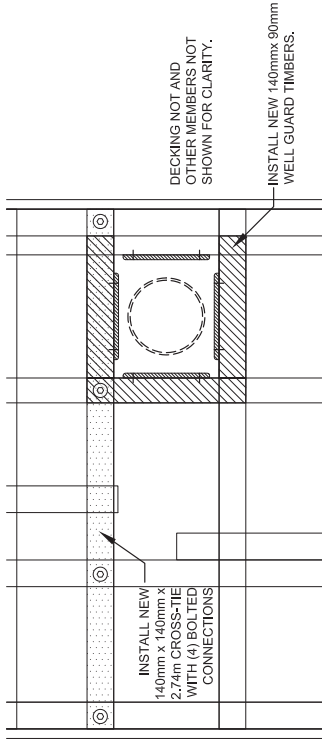
Checked by	JIE
Drawn by	DB
Date	27-MAR-15
Scale	1:1000
Inspectors	DB, WP
Pages	11 x 17

PROJECT	FLOAT E LAYOUT FLOAT RECONSTRUCTION BELLA BELLA SMALL CRAFT HARBOUR BELLA BELLA, BRITISH COLUMBIA
DWG. No.	4207 -D-40. 3

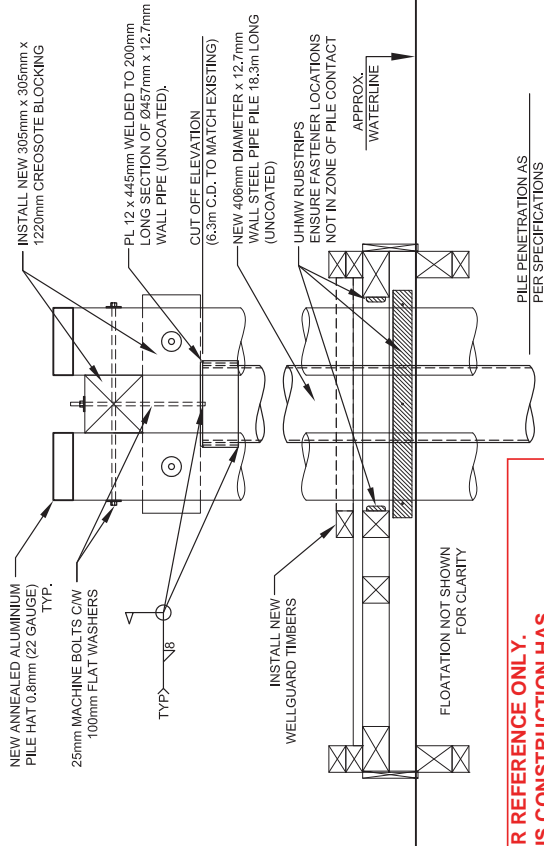
TIMBER PILE DOLPHIN REPAIR:
PLAN VIEW (TYP)



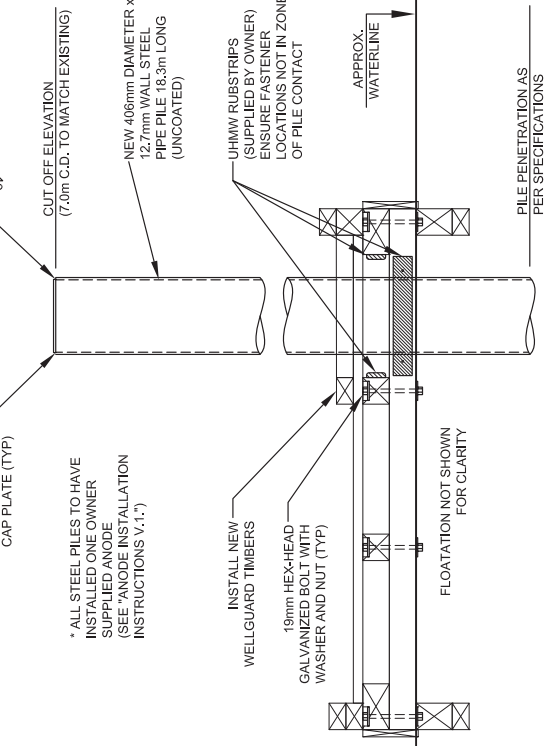
STEEL PILE INSTALLATION:
PLAN VIEW (TYP)



TIMBER PILE DOLPHIN REPAIR:
SECTION VIEW (TYP)



STEEL PILE INSTALLATION:
SECTION VIEW (TYP)



**FOR REFERENCE ONLY.
THIS CONSTRUCTION HAS
BEEN COMPLETED.**

Ref. No.	REFERENCE

Client



Fisheries and Oceans
Small Craft Harbours Branch



Author

Checked by JIE		PROJECT	
Drawn by DB		PILE DOLPHIN DETAILS	
Date 27-MAR-15		FLOAT RECONSTRUCTION	
Scale 1:25		BELLA BELLA SMALL CRAFT HARBOUR	
Inspectors DB, WP		BELLA BELLA, BRITISH COLUMBIA	
Pages 11 x 17		DWG. No. 4207 -D-50.3	

Client



Fisheries and Oceans
Pêches et Océans

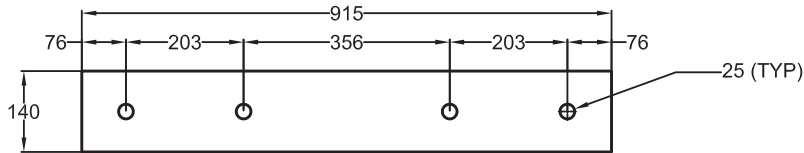
Small Craft
Harbours Branch

This document contains restricted and/or privileged information and has been prepared solely for use by the party with whom Sea Force Consultants Inc. has entered into a contract. This document is to be used only for the purpose to which it refers and none of the information in this document may be used, reproduced or transmitted, in any form or by any means, electronic or mechanical, without written permission of Sea Force Consultants Inc.

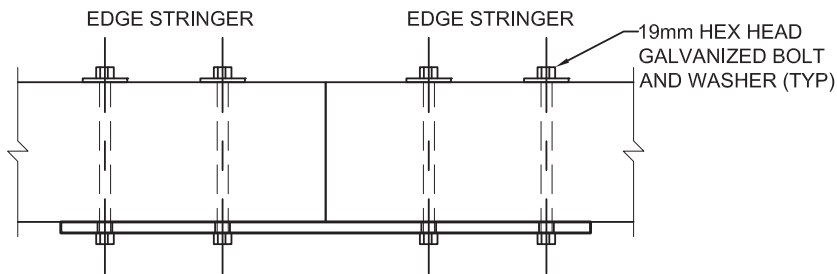
Author



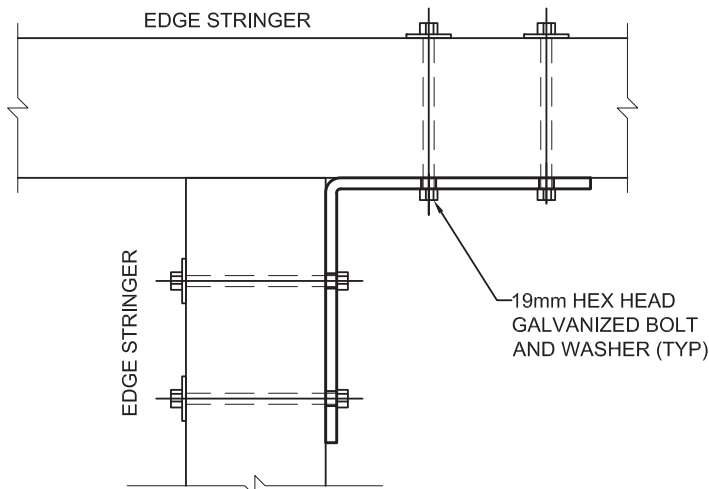
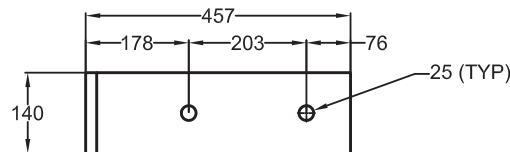
FLOAT CONNECTOR: STRAIGHT



MATERIAL: 19mm STEEL PLATE
COATING: HOT DIPPED GALVANIZED



FLOAT CONNECTOR: ANGLED



* DECKING AND OTHER FLOAT COMPONENTS NOT SHOWN FOR CLARITY.

**FOR REFERENCE ONLY.
THIS CONSTRUCTION HAS
BEEN COMPLETED.**

		Checked by XIE	PROJECT
		Drawn by DB	
		Date 27-MAR-15	
		Scale AS SHOWN	
		Inspectors N/A	
Ref. No.	REFERENCE	Paper 8.5 x 11	DWG. No. 4207 -D- 60.3

Client



Fisheries and Oceans
Pêches et Océans

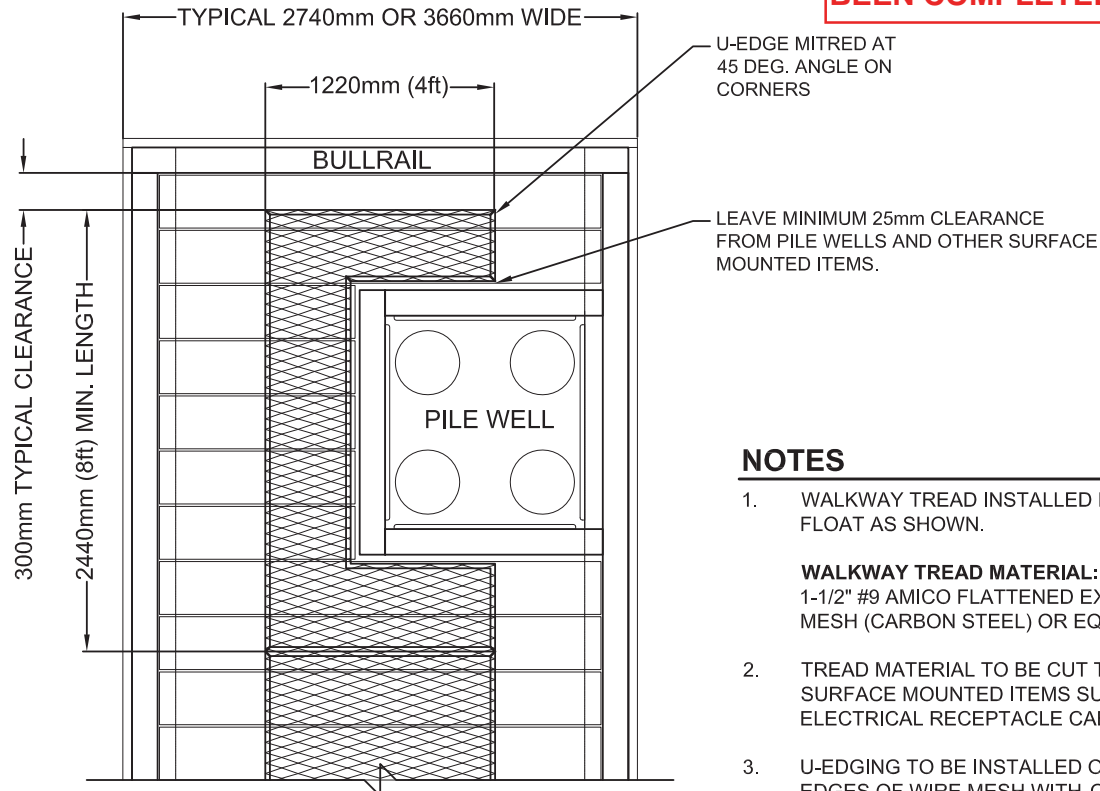
Small Craft
Harbours Branch

This document contains restricted and/or privileged information and has been prepared solely for use by the party with whom Sea Force Consultants Inc. has entered into a contract. This document is to be used only for the purpose to which it refers and none of the information in this document may be used, reproduced or transmitted, in any form or by any means, electronic or mechanical, without written permission of Sea Force Consultants Inc.

Author



PLAN VIEW WALKWAY TREAD LAYOUT (TYPICAL)



**FOR REFERENCE ONLY.
THIS CONSTRUCTION HAS
BEEN COMPLETED.**

NOTES

1. WALKWAY TREAD INSTALLED DOWN CENTRE OF FLOAT AS SHOWN.
2. TREAD MATERIAL TO BE CUT TO CONFORM TO SURFACE MOUNTED ITEMS SUCH AS PILE WELLS, ELECTRICAL RECEPTACLE CABINETS, ETC.
3. U-EDGING TO BE INSTALLED OVER ALL EXPOSED EDGES OF WIRE MESH WITH CORNERS MITRED AT 45 DEGREES.

WALKWAY TREAD MATERIAL:

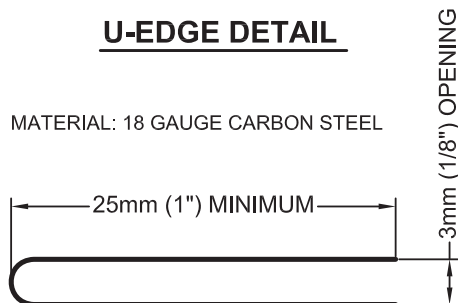
1-1/2" #9 AMICO FLATTENED EXPANDED METAL MESH (CARBON STEEL) OR EQUIVALENT.

U-EDGING MATERIAL: 18 GAUGE #401 METALMART OR EQUIVALENT WITH DIMENSIONS SHOWN.

4. U-EDGING TO BE PRE-DRILLED AND FASTENED WITH #14 STAINLESS PAN HEAD WOOD SCREWS, 38mm (1-1/2" LONG).
5. FASTENERS TO HAVE A MAXIMUM SPACING OF 500mm WITH TWO (2) CONNECTION POINTS AT EACH CORNER

U-EDGE DETAIL

MATERIAL: 18 GAUGE CARBON STEEL



		Checked by XIE	PROJECT
		Drawn by DB	
		Date 25-MAR-15	
		Scale 1:40	
		Inspectors N/A	
Ref. No.	REFERENCE	Paper 8.5 x 11	DWG. No. 4900 -D- 01 .3

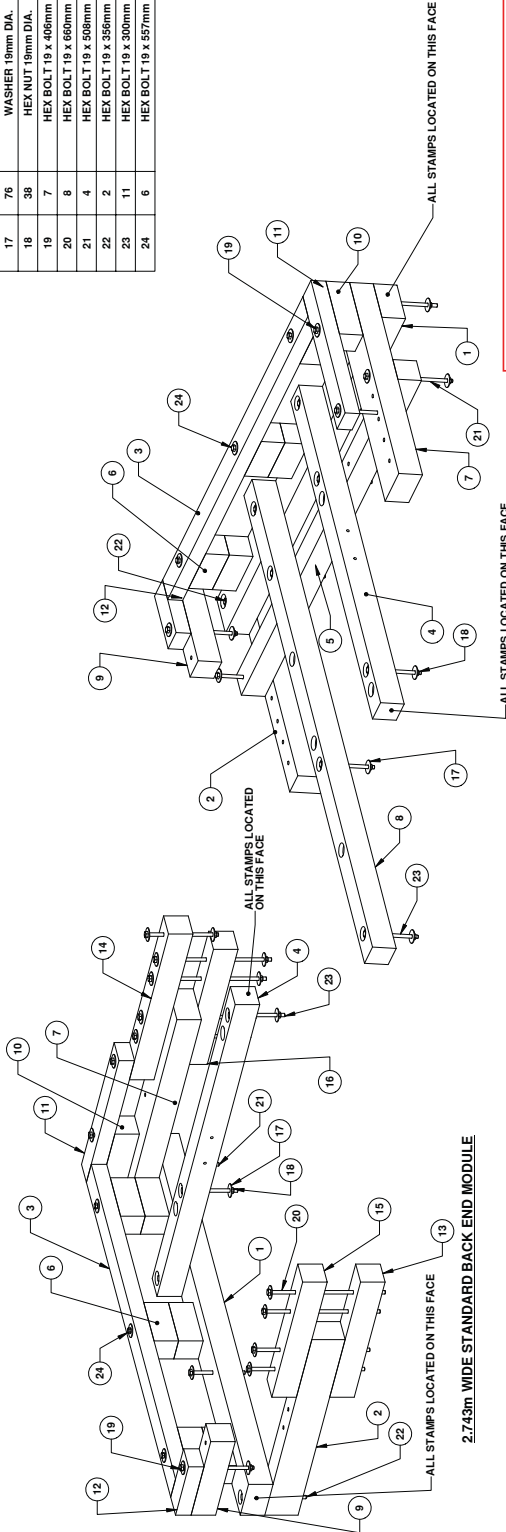
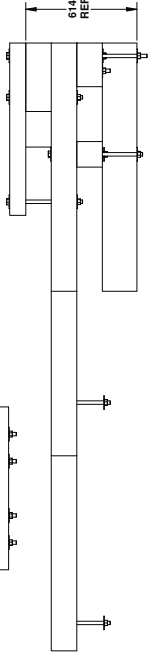
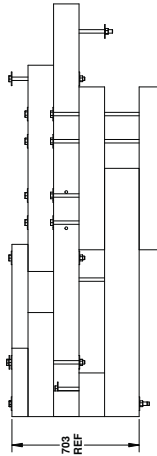
WALKWAY TREAD TYPICAL DETAIL
2.74m (9ft) AND 3.66m (12ft) WIDE TIMBER FLOATS
SMALL CRAFT HARBOURS
PACIFIC REGION, BRITISH COLUMBIA

TIMBER MEMBERS REQUIREMENTS

ITEM NO.	QTY.	TIMBER MEMBER	DESCRIPTION	MATERIAL
1	2	END CROSSTIE	(6x10) 141 x 241 x 2743 L.G.	14 LB. CREOSOTE TREATMENT #1 BTR PR
2	2	FLANGE END	(6x8) 141 x 191 x 1372 L.G.	14 LB. CREOSOTE TREATMENT #1 BTR PR
3	2	END RAIL	(4x6) 89 x 141 x 2460 L.G.	ACZA
4	2	JOIST END 'B'	(6x6) 141 x 141 x 2281 L.G.	14 LB. CREOSOTE TREATMENT #1 BTR PR
5	1	STANDARD CROSSTIE	(6x6) 141 x 141 x 2743 L.G.	14 LB. CREOSOTE TREATMENT #1 BTR PR
6	14	END BLOCK	(6x6) 141 x 141 x 300 L.G.	ACZA
7	2	STRINGER END	(6x10) 141 x 241 x 1372 L.G.	14 LB. CREOSOTE TREATMENT #1 BTR PR
8	1	MODIFIED JOIST	(6x6) 141 x 141 x 3359 L.G.	14 LB. CREOSOTE TREATMENT #1 BTR PR
9	2	SPACER END 'B'	(6x6) 141 x 141 x 575 L.G.	ACZA
10	2	SPACER END	(6x6) 141 x 141 x 378 L.G.	ACZA
11	2	RAIL END	(4x6) 89 x 141 x 952 L.G.	ACZA
12	2	RAIL END 'B'	(4x6) 89 x 141 x 378 L.G.	ACZA
13	1	LOWER FLANGE SPLICE	(6x6) 141 x 141 x 900 L.G.	14 LB. CREOSOTE TREATMENT #1 BTR PR
14	1	UPPER FLANGE SPLICE	(6x6) 141 x 141 x 1140 L.G.	ACZA
15	1	UPPER STRINGER SPLICE	(6x6) 141 x 141 x 900 L.G.	14 LB. CREOSOTE TREATMENT #1 BTR PR
16	1	LOWER STRINGER SPLICE	(6x6) 141 x 141 x 900 L.G.	14 LB. CREOSOTE TREATMENT #1 BTR PR

HARDWARE REQUIREMENTS

ITEM NO.	QTY.	DESCRIPTION
17	76	WASHER 19mm DIA.
18	38	HEX NUT 19mm DIA.
19	7	HEX BOLT 19 x 406mm
20	8	HEX BOLT 19 x 660mm
21	4	HEX BOLT 19 x 506mm
22	2	HEX BOLT 19 x 300mm
23	11	HEX BOLT 19 x 300mm
24	6	HEX BOLT 19 x 557mm



FOR REFERENCE ONLY

2.743m WIDE STANDARD BACK END MODULE

2.743m WIDE STANDARD FRONT END MODULE

2.743m WIDE END FLOAT MODULES



Fisheries & Oceans

Pêches et Océans

Small Craft

Harbours Branch

2.743m WIDE FLOAT MODULE

2011 REVISION

D FMS-ND-200 G

REVISIONS

NO.	DATE	DESCRIPTION
1	2011-01-11	ISSUED FOR CONSTRUCTION

APPROVED FOR CONSTRUCTION

DESIGNED BY: [Signature]

CHECKED BY: [Signature]

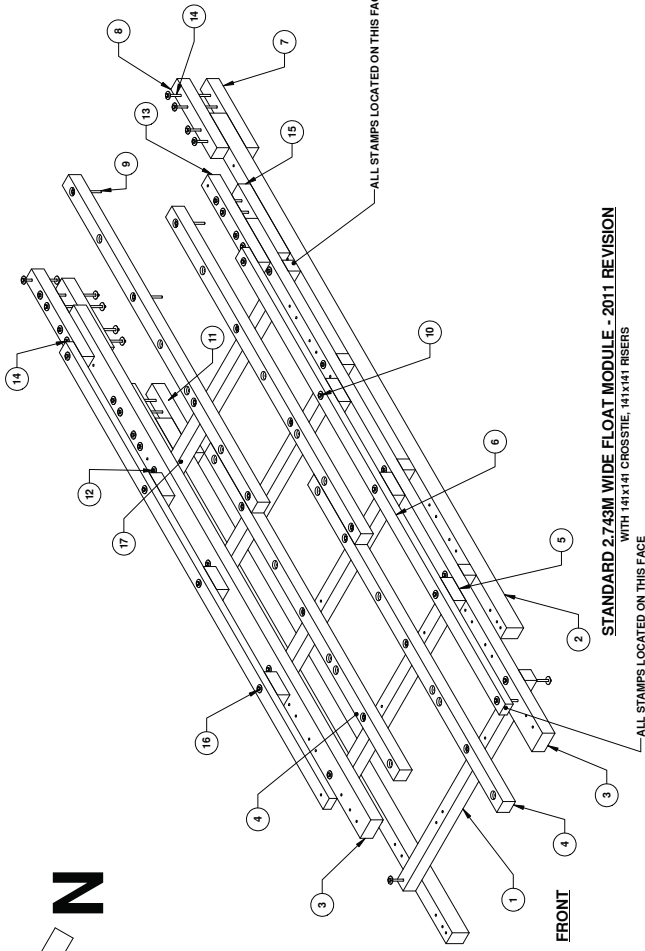
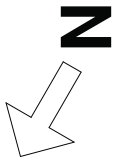
DATE: 2011-01-11

SCALE: 1/8" = 1'-0"

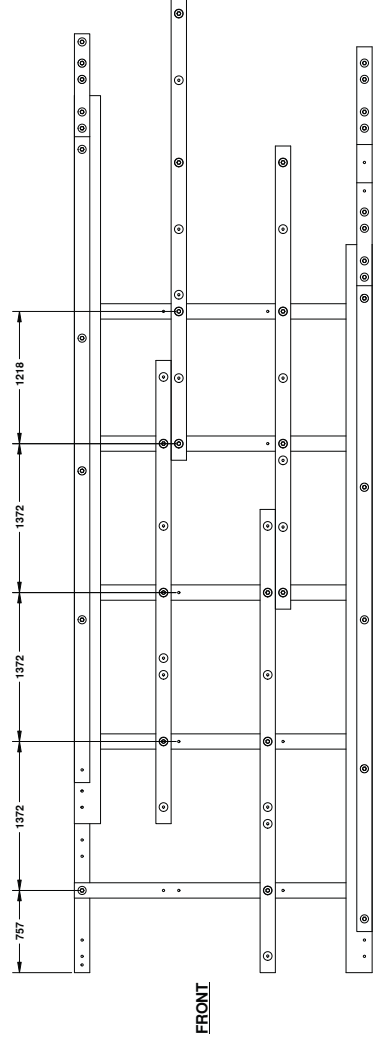
SHEET 1 OF 1

WestCAD Services Ltd.

114



STANDARD 2.743M WIDE FLOAT MODULE - 2011 REVISION
WITH 141X141 CREOSOTE, 141X141 RISERS



PLAN VIEW


TIMBER MEMBERS

ITEM NO.	QTY.	TIMBER MEMBER	DESCRIPTION	MATERIAL
1	5	CROSS TIES	(6x6) 141 X 141 X 2743 LG	14 LB CREOSOTE TREATMENT #1 BTR FIR
2	2	FLANGE	(6x6) 141 X 191 X 6706 LG	14 LB CREOSOTE TREATMENT #1 BTR FIR
3	2	STRINGER	(6x10) 141 X 241 X 6706 LG	14 LB CREOSOTE TREATMENT #1 BTR FIR
4	4	JOISTS	(6x6) 141 X 141 X 4267 LG	14 LB CREOSOTE TREATMENT #1 BTR FIR
5	6	RISERS	(6x6) 141 X 141 X 300 LG	ACZA
6	2	RAIL	(4x6) 89 X 141 X 5850 LG	ACZA
7	2	LOWER FLANGE SPLICE	(6x6) 141 X 141 X 900 LG	14 LB CREOSOTE TREATMENT #1 BTR FIR
8	2	UPPER FLANGE SPLICE	(6x6) 141 X 141 X 900 LG	14 LB CREOSOTE TREATMENT #1 BTR FIR
13	2	UPPER STRINGER SPLICE	(6x6) 141 X 141 X 1140 LG	ACZA
15	2	LOWER STRINGER SPLICE	(6x6) 141 X 141 X 900 LG	14 LB CREOSOTE TREATMENT #1 BTR FIR
17	5	FOAM BUOYANCY BILLET	1000 X 597 X 2438 LG	
19	28	DECK PLANKS	(12x2) 305 X 38 X 2440 LG	ACZA

HARDWARE REQUIREMENTS

ITEM NO.	QTY.	HARDWARE
9	14	HEX BOLT 19 x 300mm
10	100	WASHERS 19 DIA.
11	50	HEX NUT 19mm DIA.
12	10	HEX BOLT 19 x 508mm
14	16	HEX BOLT 19 x 660mm
16	10	HEX BOLT 19 x 406mm
20	192	100mm GALVANIZED SPIRAL NAILS

FOR REFERENCE ONLY



Fisheries and Oceans
Pêches et Océans
Small Craft
Harbours Branch

2011 REVISION
2.743m WIDE STANDARD
FLOAT MODULE

DATE: 12/04/11
BY: [Signature]
CHECKED: [Signature]
APPROVED: [Signature]

2011 REVISION
2.743m WIDE STANDARD
FLOAT MODULE

DATE: 12/04/11
BY: [Signature]
CHECKED: [Signature]
APPROVED: [Signature]

2011 REVISION
2.743m WIDE STANDARD
FLOAT MODULE

DATE: 12/04/11
BY: [Signature]
CHECKED: [Signature]
APPROVED: [Signature]

2011 REVISION
2.743m WIDE STANDARD
FLOAT MODULE

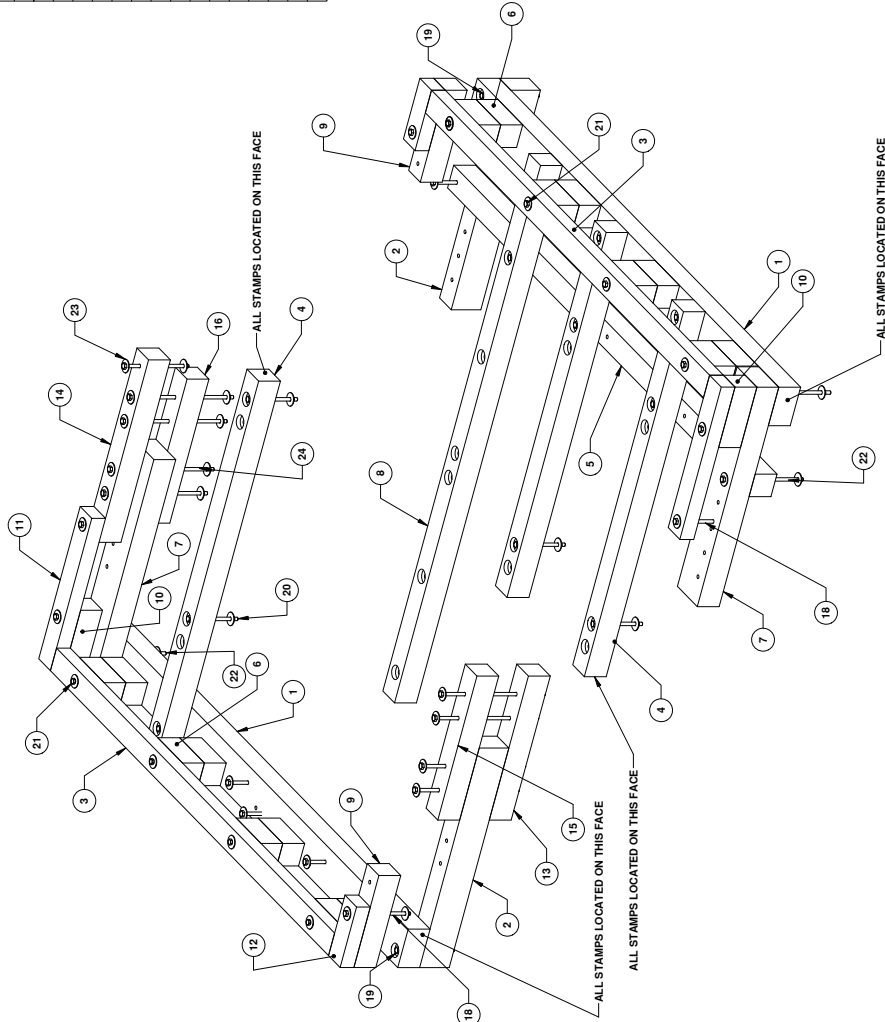
DATE: 12/04/11
BY: [Signature]
CHECKED: [Signature]
APPROVED: [Signature]

TIMBER MEMBER REQUIREMENTS

ITEM NO.	QTY.	TIMBER MEMBER	DESCRIPTION	MATERIAL
1	2	END CROSSIE	(6x10) 141 x 241 x 3658 LG.	14 LB. CREOSOTE TREATMENT #1 BTR FIR
2	2	FLANGE END	(6x6) 141 x 191 x 1372 LG.	14 LB. CREOSOTE TREATMENT #1 BTR FIR
3	2	END RAIL	(4x6) 89 x 141 x 3374 LG.	ACZA
4	3	JOIST END 'B'	(6x6) 141 x 141 x 2281 LG.	14 LB. CREOSOTE TREATMENT #1 BTR FIR
5	1	STANDARD CROSSIE	(6x6) 141 x 141 x 3658 LG.	14 LB. CREOSOTE TREATMENT #1 BTR FIR
6	16	END BLOCK	(6x6) 141 x 141 x 300 LG.	ACZA
7	2	STRINGER END	(6x10) 141 X 241 x 1372 LG.	14 LB. CREOSOTE TREATMENT #1 BTR FIR
8	1	MODIFIED JOIST	(6x6) 141 x 141 x 3389 LG.	14 LB. CREOSOTE TREATMENT #1 BTR FIR
9	2	SPACER END 'B'	(6x6) 141 x 141 x 378 LG.	ACZA
10	2	SPACER END	(6x6) 141 x 141 x 378 LG.	ACZA
11	2	RAIL END 'B'	(4x6) 89 x 141 x 982 LG.	ACZA
12	2	RAIL END 'B'	(4x6) 89 x 141 x 378 LG.	ACZA
13	1	LOWER FLANGE SPLICE	(6x6) 141 x 141 x 900 LG.	14 LB. CREOSOTE TREATMENT #1 BTR FIR
14	1	UPPER STRINGER SPLICE	(6x6) 141 x 141 x 1140 LG.	ACZA
15	1	UPPER FLANGE SPLICE	(6x6) 141 x 141 x 900 LG.	14 LB. CREOSOTE TREATMENT #1 BTR FIR
16	1	LOWER STRINGER SPLICE	(6x6) 141 x 141 x 900 LG.	14 LB. CREOSOTE TREATMENT #1 BTR FIR

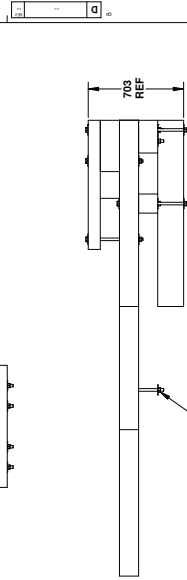
HARDWARE REQUIREMENTS

ITEM NO.	QTY.	DESCRIPTION
18	7	HEX BOLT 19 x 406mm
19	2	HEX BOLT 19 x 356mm
20	13	HEX BOLT 19 x 300mm
21	8	HEX BOLT 19 x 357mm
22	4	HEX BOLT 19 x 508mm
23	84	WASHER 19mm DIA.
24	8	HEX BOLT 19 x 560mm
25	42	HEX NUT 19mm DIA.



3.65m WIDE FLOAT END MODULES

FOR REFERENCE



Fisheries and Oceans Pêches et Océans Small Craft Harbours Branch	
3.65m WIDE FLOAT END MODULE	
2011 REVISION	
D FM12-END-200	
SCALE: 1/2" = 1'-0"	
SHEET 1 OF 1	

