
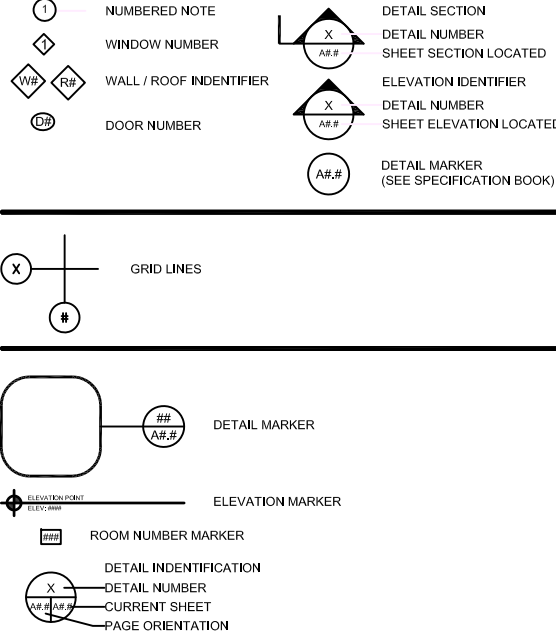
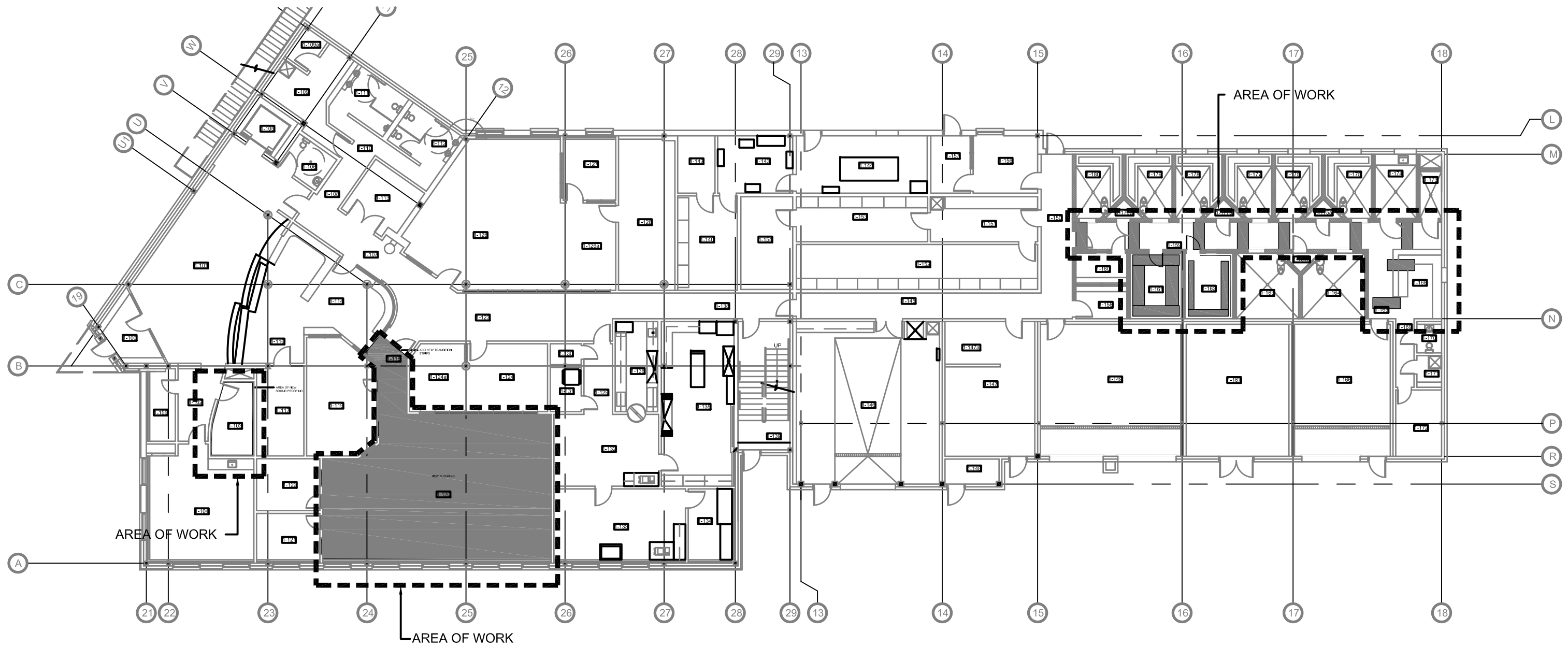


FACILITY BUILDING INTERIOR RENOVATION IQALUIT, NUNAVUT CONSTRUCTION

DRAWING LIST	CONSULTANT LIST	DRAWING SYMBOLS	ABBREVIATION LIST																																																																																																																																																																																																																																																																																																																																																																
<p>DRAWING LIST</p> <p>A0.0 TITLE PAGE A1.0 KEY PLAN A2.0 PARTIAL MAIN FLOOR PLAN A2.1 INTERIOR ELEVATION DETAILS A2.2 TELECOMMUNICATION WIRING REQUIREMENTS A2.3 S1.0 STRUCTURAL PLAN</p>	<p>PRIME CONSULTANT:</p>  <p>ENGINEERING AND DRAFTING</p> <p>STRUCTURAL CONSULTANT:</p> <p style="text-align: center;">BEACH ROCKE ENGINEERING</p>		<table border="1" style="width: 100%; border-collapse: collapse; font-size: 8px;"> <tr><td>ACOUSTIC</td><td>ACST</td><td>DRYWALL</td><td>DW</td><td>LAVATORY</td><td>LAV</td><td>ROOM</td><td>RM</td></tr> <tr><td>ADHESIVE</td><td>ADH</td><td>EACH</td><td>EA</td><td>LAY-IN ACOUSTIC TILE</td><td>LAT</td><td>ROUGH OPENING</td><td>RO</td></tr> <tr><td>ADJUSTABLE</td><td>ADJ</td><td>EACH WAY</td><td>EW</td><td>LEFT HAND</td><td>LH</td><td>RUBBER</td><td>RB</td></tr> <tr><td>AGGREGATE</td><td>AGGR</td><td>EAST</td><td>E</td><td>LEFT HAND REVERSE</td><td>LHR</td><td>RVT</td><td>RESILIENT SHEET FLOORING</td></tr> <tr><td>AIR VAPOUR BARRIER</td><td>AVB</td><td>ELECTRICAL</td><td>ELEC</td><td>LENGTH</td><td>LG</td><td>SCHEDULE</td><td>SCHED</td></tr> <tr><td>ALTERNATE</td><td>ALT</td><td>ELEVATION</td><td>EL</td><td>LIGHT</td><td>LT</td><td>SCREW</td><td>SCR</td></tr> <tr><td>ALUMINUM</td><td>ALUM</td><td>ELEVATOR</td><td>ELEV</td><td>LOUVRE</td><td>LVR</td><td>SECTION</td><td>SECT</td></tr> <tr><td>APARTMENT</td><td>APT</td><td>EPOXY</td><td>EP</td><td>MANUFACTURE</td><td>MFG</td><td>SELF ADHESIVE</td><td>SA</td></tr> <tr><td>APPROXIMATE</td><td>APPROX</td><td>EQUAL</td><td>EQ</td><td>MARK</td><td>MK</td><td>SHEATHING</td><td>SHTG</td></tr> <tr><td>ARCHITECTURE</td><td>ARCH</td><td>EQUALLY SPACED</td><td>EQ SP</td><td>MASONRY OPENING</td><td>MO</td><td>SHEET</td><td>SHT</td></tr> <tr><td>BEAM</td><td>BM</td><td>EQUIPMENT</td><td>EQUIP</td><td>MATERIAL</td><td>MAT</td><td>SHEET VINYL</td><td>SV</td></tr> <tr><td>BENCH MARK</td><td>BM</td><td>EXISTING</td><td>EXIST</td><td>MECHANICAL</td><td>MECH</td><td>SIMILAR</td><td>SIM</td></tr> <tr><td>BETWEEN</td><td>BTWN</td><td>EXPANSION</td><td>EXP</td><td>MINIMUM</td><td>MIN</td><td>SOLID CORE</td><td>SC</td></tr> <tr><td>BLOCK</td><td>BLK</td><td>EXTERIOR</td><td>EXT</td><td>MISCELLANEOUS</td><td>MISC</td><td>SOUTH</td><td>S</td></tr> <tr><td>BOARD</td><td>BD</td><td>EXTRUDE</td><td>EXTR</td><td>NEAR FACE</td><td>NF</td><td>SPECIFICATION</td><td>SPEC</td></tr> <tr><td>BOTH SIDES</td><td>BS</td><td>FACE TO FACE</td><td>F/F</td><td>NEAR SIDE</td><td>NS</td><td>SPRUCE</td><td>SPR</td></tr> <tr><td>BOTH WAYS</td><td>BW</td><td>FAR SIDE</td><td>FS</td><td>NORTH</td><td>N</td><td>SPRUCE, PINE OR FIR</td><td>S/P/F</td></tr> <tr><td>BOTTOM</td><td>BOT</td><td>FIBREBOARD</td><td>FBRBD</td><td>NOT APPLICABLE</td><td>N/A</td><td>STAIN</td><td>ST</td></tr> <tr><td>BUILDING</td><td>BLDG</td><td>FINISH</td><td>FIN</td><td>NOT IN CONTRACT</td><td>NIC</td><td>STAINLESS STEEL</td><td>SS</td></tr> <tr><td>CARPET</td><td>CPT</td><td>FLOOR</td><td>FL</td><td>NOT TO SCALE</td><td>NTS</td><td>STANDARD</td><td>STD</td></tr> <tr><td>CAST IRON</td><td>CI</td><td>FLOOR DRAIN</td><td>FD</td><td>NUMBER</td><td>NO</td><td>STEEL</td><td>STL</td></tr> <tr><td>CEILING</td><td>CLG</td><td>FLOORING</td><td>FLG</td><td>ON CENTRE</td><td>O/C</td><td>STRUCTURAL</td><td>STRUCT</td></tr> <tr><td>CEMENT BOARD</td><td>CBD</td><td>FLUORESCENT</td><td>FLR</td><td>OUT TO OUT</td><td>O/O</td><td>SQUARE FEET</td><td>SF</td></tr> <tr><td>CENTRE</td><td>CTR</td><td>FOOTING</td><td>FTG</td><td>OUTSIDE DIAMETER</td><td>OD</td><td>TEMPORARY</td><td>TEMP</td></tr> <tr><td>CENTRE TO CENTRE</td><td>C/C</td><td>FOUNDATION</td><td>FDN</td><td>OUTSIDE FACE</td><td>OF</td><td>THROUGH</td><td>THRU</td></tr> <tr><td>CERAMIC TILE</td><td>CT</td><td>FULL SIZE</td><td>FS</td><td>OVERHEAD</td><td>OH</td><td>TO MATCH EXISTING</td><td>TME</td></tr> <tr><td>CIRCLE</td><td>CIRC</td><td>GALVANIZED</td><td>GALV</td><td>PAINT</td><td>PT</td><td>TONGUE AND GROOVE</td><td>T&G</td></tr> <tr><td>CLEAR</td><td>CLR</td><td>GALVANIZED IRON</td><td>GI</td><td>PAINTED</td><td>PTD</td><td>TOP AND BOTTOM</td><td>T&B</td></tr> <tr><td>COLUMN</td><td>COL</td><td>GAUGE</td><td>GA</td><td>PARTITION</td><td>PTN</td><td>TOP OF</td><td>T/O</td></tr> <tr><td>COMPLETE WITH</td><td>C/W</td><td>GLASS</td><td>GL</td><td>PLYWOOD</td><td>PLYWD</td><td>TYPICAL</td><td>TYP</td></tr> <tr><td>CONCRETE</td><td>CONC</td><td>HARDWARE</td><td>HDW</td><td>PRECAST</td><td>PC</td><td>UNDER SIDE</td><td>U/S</td></tr> <tr><td>CONCRETE BLOCK</td><td>CBLK</td><td>HEIGHT</td><td>HGT</td><td>PRECAST CONCRETE</td><td>PC CONC</td><td>UNDERCUT</td><td>UCUT</td></tr> <tr><td>CONSTRUCTION</td><td>CONST</td><td>HEXAGON</td><td>HEX</td><td>PREFABRICATION</td><td>PREFAB</td><td>URINAL</td><td>UR</td></tr> <tr><td>CONTINUOUS</td><td>CONT</td><td>HOLLOW CORE</td><td>HC</td><td>PREFINISHED</td><td>PREFIN</td><td>VAPOUR BARRIER</td><td>VB</td></tr> <tr><td>CONTROL JOINT</td><td>CJ</td><td>HOLLOW METAL</td><td>HM</td><td>PRESSED STEEL</td><td>PS</td><td>VERTICAL</td><td>VERT</td></tr> <tr><td>COUNTERSINK</td><td>CSK</td><td>HORIZONTAL</td><td>HORIZ</td><td>QUANTITY</td><td>QTY</td><td>VINYL ASBESTOS TILE</td><td>VAT</td></tr> <tr><td>COVED SHEET VINYL</td><td>CSV</td><td>INCLUSIVE</td><td>INCL</td><td>QUARRY TILE</td><td>QT</td><td>VINYL COVE BASE</td><td>VCB</td></tr> <tr><td>DETAIL</td><td>DTL</td><td>INSIDE DIAMETER</td><td>ID</td><td>RADIUS</td><td>R</td><td>VINYL TILE</td><td>VT</td></tr> <tr><td>DEMOLISH</td><td>DEMO</td><td>INSIDE FACE</td><td>IF</td><td>RAINWATER LEADER</td><td>RWL</td><td>VINYL WALL COVERING</td><td>VWC</td></tr> <tr><td>DIAGONAL</td><td>DIAG</td><td>INSULATE</td><td>INSUL</td><td>REFERENCE</td><td>REF</td><td>WATER CLOSET</td><td>WC</td></tr> <tr><td>DIAMETER</td><td>DIA</td><td>INTERIOR</td><td>INT</td><td>REINFORCE</td><td>REINF</td><td>WEATHERSTRIPPING</td><td>WS</td></tr> <tr><td>DIMENSION</td><td>DIM</td><td>JOINT</td><td>JT</td><td>RESILIENT</td><td>RESIL</td><td>WEIGHT</td><td>WT</td></tr> <tr><td>DOOR</td><td>DR</td><td>JOIST</td><td>JST</td><td>REVERSE</td><td>RVS</td><td>WITH</td><td>W/</td></tr> <tr><td>DOUBLE</td><td>DBL</td><td>KNOCK DOWN</td><td>KD</td><td>REVISION</td><td>REV</td><td>WITHOUT</td><td>W/O</td></tr> </table>	ACOUSTIC	ACST	DRYWALL	DW	LAVATORY	LAV	ROOM	RM	ADHESIVE	ADH	EACH	EA	LAY-IN ACOUSTIC TILE	LAT	ROUGH OPENING	RO	ADJUSTABLE	ADJ	EACH WAY	EW	LEFT HAND	LH	RUBBER	RB	AGGREGATE	AGGR	EAST	E	LEFT HAND REVERSE	LHR	RVT	RESILIENT SHEET FLOORING	AIR VAPOUR BARRIER	AVB	ELECTRICAL	ELEC	LENGTH	LG	SCHEDULE	SCHED	ALTERNATE	ALT	ELEVATION	EL	LIGHT	LT	SCREW	SCR	ALUMINUM	ALUM	ELEVATOR	ELEV	LOUVRE	LVR	SECTION	SECT	APARTMENT	APT	EPOXY	EP	MANUFACTURE	MFG	SELF ADHESIVE	SA	APPROXIMATE	APPROX	EQUAL	EQ	MARK	MK	SHEATHING	SHTG	ARCHITECTURE	ARCH	EQUALLY SPACED	EQ SP	MASONRY OPENING	MO	SHEET	SHT	BEAM	BM	EQUIPMENT	EQUIP	MATERIAL	MAT	SHEET VINYL	SV	BENCH MARK	BM	EXISTING	EXIST	MECHANICAL	MECH	SIMILAR	SIM	BETWEEN	BTWN	EXPANSION	EXP	MINIMUM	MIN	SOLID CORE	SC	BLOCK	BLK	EXTERIOR	EXT	MISCELLANEOUS	MISC	SOUTH	S	BOARD	BD	EXTRUDE	EXTR	NEAR FACE	NF	SPECIFICATION	SPEC	BOTH SIDES	BS	FACE TO FACE	F/F	NEAR SIDE	NS	SPRUCE	SPR	BOTH WAYS	BW	FAR SIDE	FS	NORTH	N	SPRUCE, PINE OR FIR	S/P/F	BOTTOM	BOT	FIBREBOARD	FBRBD	NOT APPLICABLE	N/A	STAIN	ST	BUILDING	BLDG	FINISH	FIN	NOT IN CONTRACT	NIC	STAINLESS STEEL	SS	CARPET	CPT	FLOOR	FL	NOT TO SCALE	NTS	STANDARD	STD	CAST IRON	CI	FLOOR DRAIN	FD	NUMBER	NO	STEEL	STL	CEILING	CLG	FLOORING	FLG	ON CENTRE	O/C	STRUCTURAL	STRUCT	CEMENT BOARD	CBD	FLUORESCENT	FLR	OUT TO OUT	O/O	SQUARE FEET	SF	CENTRE	CTR	FOOTING	FTG	OUTSIDE DIAMETER	OD	TEMPORARY	TEMP	CENTRE TO CENTRE	C/C	FOUNDATION	FDN	OUTSIDE FACE	OF	THROUGH	THRU	CERAMIC TILE	CT	FULL SIZE	FS	OVERHEAD	OH	TO MATCH EXISTING	TME	CIRCLE	CIRC	GALVANIZED	GALV	PAINT	PT	TONGUE AND GROOVE	T&G	CLEAR	CLR	GALVANIZED IRON	GI	PAINTED	PTD	TOP AND BOTTOM	T&B	COLUMN	COL	GAUGE	GA	PARTITION	PTN	TOP OF	T/O	COMPLETE WITH	C/W	GLASS	GL	PLYWOOD	PLYWD	TYPICAL	TYP	CONCRETE	CONC	HARDWARE	HDW	PRECAST	PC	UNDER SIDE	U/S	CONCRETE BLOCK	CBLK	HEIGHT	HGT	PRECAST CONCRETE	PC CONC	UNDERCUT	UCUT	CONSTRUCTION	CONST	HEXAGON	HEX	PREFABRICATION	PREFAB	URINAL	UR	CONTINUOUS	CONT	HOLLOW CORE	HC	PREFINISHED	PREFIN	VAPOUR BARRIER	VB	CONTROL JOINT	CJ	HOLLOW METAL	HM	PRESSED STEEL	PS	VERTICAL	VERT	COUNTERSINK	CSK	HORIZONTAL	HORIZ	QUANTITY	QTY	VINYL ASBESTOS TILE	VAT	COVED SHEET VINYL	CSV	INCLUSIVE	INCL	QUARRY TILE	QT	VINYL COVE BASE	VCB	DETAIL	DTL	INSIDE DIAMETER	ID	RADIUS	R	VINYL TILE	VT	DEMOLISH	DEMO	INSIDE FACE	IF	RAINWATER LEADER	RWL	VINYL WALL COVERING	VWC	DIAGONAL	DIAG	INSULATE	INSUL	REFERENCE	REF	WATER CLOSET	WC	DIAMETER	DIA	INTERIOR	INT	REINFORCE	REINF	WEATHERSTRIPPING	WS	DIMENSION	DIM	JOINT	JT	RESILIENT	RESIL	WEIGHT	WT	DOOR	DR	JOIST	JST	REVERSE	RVS	WITH	W/	DOUBLE	DBL	KNOCK DOWN	KD	REVISION	REV	WITHOUT	W/O
ACOUSTIC	ACST	DRYWALL	DW	LAVATORY	LAV	ROOM	RM																																																																																																																																																																																																																																																																																																																																																												
ADHESIVE	ADH	EACH	EA	LAY-IN ACOUSTIC TILE	LAT	ROUGH OPENING	RO																																																																																																																																																																																																																																																																																																																																																												
ADJUSTABLE	ADJ	EACH WAY	EW	LEFT HAND	LH	RUBBER	RB																																																																																																																																																																																																																																																																																																																																																												
AGGREGATE	AGGR	EAST	E	LEFT HAND REVERSE	LHR	RVT	RESILIENT SHEET FLOORING																																																																																																																																																																																																																																																																																																																																																												
AIR VAPOUR BARRIER	AVB	ELECTRICAL	ELEC	LENGTH	LG	SCHEDULE	SCHED																																																																																																																																																																																																																																																																																																																																																												
ALTERNATE	ALT	ELEVATION	EL	LIGHT	LT	SCREW	SCR																																																																																																																																																																																																																																																																																																																																																												
ALUMINUM	ALUM	ELEVATOR	ELEV	LOUVRE	LVR	SECTION	SECT																																																																																																																																																																																																																																																																																																																																																												
APARTMENT	APT	EPOXY	EP	MANUFACTURE	MFG	SELF ADHESIVE	SA																																																																																																																																																																																																																																																																																																																																																												
APPROXIMATE	APPROX	EQUAL	EQ	MARK	MK	SHEATHING	SHTG																																																																																																																																																																																																																																																																																																																																																												
ARCHITECTURE	ARCH	EQUALLY SPACED	EQ SP	MASONRY OPENING	MO	SHEET	SHT																																																																																																																																																																																																																																																																																																																																																												
BEAM	BM	EQUIPMENT	EQUIP	MATERIAL	MAT	SHEET VINYL	SV																																																																																																																																																																																																																																																																																																																																																												
BENCH MARK	BM	EXISTING	EXIST	MECHANICAL	MECH	SIMILAR	SIM																																																																																																																																																																																																																																																																																																																																																												
BETWEEN	BTWN	EXPANSION	EXP	MINIMUM	MIN	SOLID CORE	SC																																																																																																																																																																																																																																																																																																																																																												
BLOCK	BLK	EXTERIOR	EXT	MISCELLANEOUS	MISC	SOUTH	S																																																																																																																																																																																																																																																																																																																																																												
BOARD	BD	EXTRUDE	EXTR	NEAR FACE	NF	SPECIFICATION	SPEC																																																																																																																																																																																																																																																																																																																																																												
BOTH SIDES	BS	FACE TO FACE	F/F	NEAR SIDE	NS	SPRUCE	SPR																																																																																																																																																																																																																																																																																																																																																												
BOTH WAYS	BW	FAR SIDE	FS	NORTH	N	SPRUCE, PINE OR FIR	S/P/F																																																																																																																																																																																																																																																																																																																																																												
BOTTOM	BOT	FIBREBOARD	FBRBD	NOT APPLICABLE	N/A	STAIN	ST																																																																																																																																																																																																																																																																																																																																																												
BUILDING	BLDG	FINISH	FIN	NOT IN CONTRACT	NIC	STAINLESS STEEL	SS																																																																																																																																																																																																																																																																																																																																																												
CARPET	CPT	FLOOR	FL	NOT TO SCALE	NTS	STANDARD	STD																																																																																																																																																																																																																																																																																																																																																												
CAST IRON	CI	FLOOR DRAIN	FD	NUMBER	NO	STEEL	STL																																																																																																																																																																																																																																																																																																																																																												
CEILING	CLG	FLOORING	FLG	ON CENTRE	O/C	STRUCTURAL	STRUCT																																																																																																																																																																																																																																																																																																																																																												
CEMENT BOARD	CBD	FLUORESCENT	FLR	OUT TO OUT	O/O	SQUARE FEET	SF																																																																																																																																																																																																																																																																																																																																																												
CENTRE	CTR	FOOTING	FTG	OUTSIDE DIAMETER	OD	TEMPORARY	TEMP																																																																																																																																																																																																																																																																																																																																																												
CENTRE TO CENTRE	C/C	FOUNDATION	FDN	OUTSIDE FACE	OF	THROUGH	THRU																																																																																																																																																																																																																																																																																																																																																												
CERAMIC TILE	CT	FULL SIZE	FS	OVERHEAD	OH	TO MATCH EXISTING	TME																																																																																																																																																																																																																																																																																																																																																												
CIRCLE	CIRC	GALVANIZED	GALV	PAINT	PT	TONGUE AND GROOVE	T&G																																																																																																																																																																																																																																																																																																																																																												
CLEAR	CLR	GALVANIZED IRON	GI	PAINTED	PTD	TOP AND BOTTOM	T&B																																																																																																																																																																																																																																																																																																																																																												
COLUMN	COL	GAUGE	GA	PARTITION	PTN	TOP OF	T/O																																																																																																																																																																																																																																																																																																																																																												
COMPLETE WITH	C/W	GLASS	GL	PLYWOOD	PLYWD	TYPICAL	TYP																																																																																																																																																																																																																																																																																																																																																												
CONCRETE	CONC	HARDWARE	HDW	PRECAST	PC	UNDER SIDE	U/S																																																																																																																																																																																																																																																																																																																																																												
CONCRETE BLOCK	CBLK	HEIGHT	HGT	PRECAST CONCRETE	PC CONC	UNDERCUT	UCUT																																																																																																																																																																																																																																																																																																																																																												
CONSTRUCTION	CONST	HEXAGON	HEX	PREFABRICATION	PREFAB	URINAL	UR																																																																																																																																																																																																																																																																																																																																																												
CONTINUOUS	CONT	HOLLOW CORE	HC	PREFINISHED	PREFIN	VAPOUR BARRIER	VB																																																																																																																																																																																																																																																																																																																																																												
CONTROL JOINT	CJ	HOLLOW METAL	HM	PRESSED STEEL	PS	VERTICAL	VERT																																																																																																																																																																																																																																																																																																																																																												
COUNTERSINK	CSK	HORIZONTAL	HORIZ	QUANTITY	QTY	VINYL ASBESTOS TILE	VAT																																																																																																																																																																																																																																																																																																																																																												
COVED SHEET VINYL	CSV	INCLUSIVE	INCL	QUARRY TILE	QT	VINYL COVE BASE	VCB																																																																																																																																																																																																																																																																																																																																																												
DETAIL	DTL	INSIDE DIAMETER	ID	RADIUS	R	VINYL TILE	VT																																																																																																																																																																																																																																																																																																																																																												
DEMOLISH	DEMO	INSIDE FACE	IF	RAINWATER LEADER	RWL	VINYL WALL COVERING	VWC																																																																																																																																																																																																																																																																																																																																																												
DIAGONAL	DIAG	INSULATE	INSUL	REFERENCE	REF	WATER CLOSET	WC																																																																																																																																																																																																																																																																																																																																																												
DIAMETER	DIA	INTERIOR	INT	REINFORCE	REINF	WEATHERSTRIPPING	WS																																																																																																																																																																																																																																																																																																																																																												
DIMENSION	DIM	JOINT	JT	RESILIENT	RESIL	WEIGHT	WT																																																																																																																																																																																																																																																																																																																																																												
DOOR	DR	JOIST	JST	REVERSE	RVS	WITH	W/																																																																																																																																																																																																																																																																																																																																																												
DOUBLE	DBL	KNOCK DOWN	KD	REVISION	REV	WITHOUT	W/O																																																																																																																																																																																																																																																																																																																																																												

	PROJECT TITLE: FACILITY BUILDING INTERIOR RENOVATION IQALUIT - NUNAVUT	00 ISSUED FOR CONSTRUCTION 17 04 28 RS	REV. # REVISION DATE (YY MM DD) REV. BY	SCALE: AS NOTED DATE (YY MM DD): 17 04 28	DRAWING NUMBER: A0.0
	SHEET TITLE: PARTIAL MAIN FLOOR PLAN	PROJECT NUMBER: 17-007-01-30	REV. # REVISION DATE (YY MM DD) REV. BY	REV. # REVISION DATE (YY MM DD) REV. BY	REVISION NUMBER: 00



1 KEY PLAN
 A1.0/A1.0 SCALE: NTS



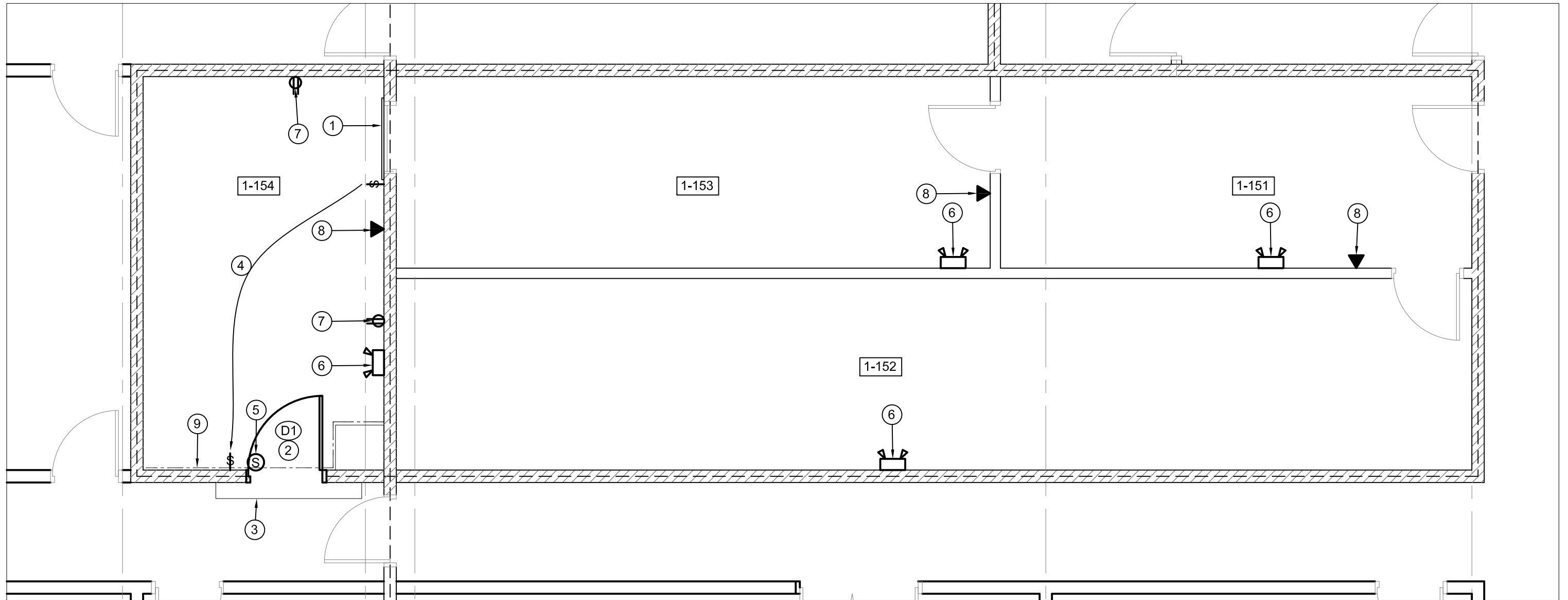
PROJECT TITLE:
FACILITY BUILDING INTERIOR RENOVATION IQUALUIT - NUNAVUT
 SOUND PROOFING AND FLOORING
 SHEET TITLE:
KEY PLAN
 PROJECT NUMBER:
17-007-01-30

00	ISSUED FOR CONSTRUCTION	17 04 28	RS
REV. #	REVISION	DATE (YY MM DD)	REV. BY

REV. #	REVISION	DATE (YY MM DD)	REV. BY
--------	----------	-----------------	---------

SCALE:
AS NOTED
 DATE (YY MM DD):
17 04 28

DRAWING NUMBER:
A1.0
 REVISION NUMBER:
00



1 PARTIAL MAIN FLOOR PLAN
 A2.0/A2.0 SCALE: 1/4"=1'-0"

DRAWING NOTES: (#)

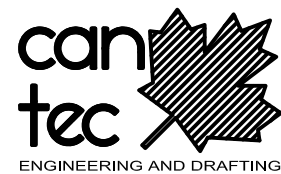
1. EXISTING DOOR TO BE CLOSED OFF PERMANENTLY. AS THE DOOR SWINGS INTO THE ROOM INSTALL 3 - 1/2" X 4" STEEL FLAT BARS AT 1/3 POINTS ALONG DOOR AND ANCHOR INTO WALL WITH 2-5/8" WEDGE ANCHORS EACH SIDE INTO MASONRY WALL. PAINT ANGLE TO MATCH EXISTING TRIM. SEE DETAIL 2 SHEET A2.2
2. CUT NEW DOOR INTO EXISTING 8" MASONRY WALL. SEE STRUCTURAL DRAWING FOR SUPPORT DETAILS. MODIFY EXISTING HALLWAY FINISHING TO ACCOMMODATE NEW DOOR. SEE DETAIL 1 SHEET A2.1 AND DETAIL 2 SHEET A2.2. INSTALL

3. INSTALL DUST TIGHT SCREEN ON BOTH SIDES OF DOOR DURING CONSTRUCTION.
4. RE-LOCATE EXISTING LIGHT SWITCH TO NEW LOCATION. LIGHT SWITCH AND NEW CONDUIT TO BE WALL MOUNTED AND PAINTED TO MATCH EXISTING COLOR.
5. RELOCATED EXISTING INTRUSION ALARM SENSOR TO NEW DOOR.
6. INSTALL NEW EMERGENCY LIGHTS WITH BATTERY PACK. ADD POWER SUPPLY AS REQUIRED AND CONNECT TO EXISTING EMERGENCY LIGHTING

7. SUPPLY NEW WALL MOUNTED DUPLEX 15A PLUG FOR FRIDGE. PLUG POWER TO BE ON GENERATOR CIRCUITS. (FINAL LOCATION TO BE SITE DETERMINED)
8. INSTALL NEW LAN DROPS
9. RE-PAINT ENTIRE INTERIOR WALL

GENERAL NOTES:

1. INSTALLATION NEW DOOR TO BE STARTED AND COMPLETED DURING THE WEEKEND TO MINIMIZE DISRUPTION TO THE BUILDING OCCUPANTS.
2. ALL MATERIALS MUST BE ON SITE AND READY FOR INSTALLATION PRIOR TO STARTING PROJECT.
3. ALL COLORS TO MATCH EXISTING COLOR SCHEME



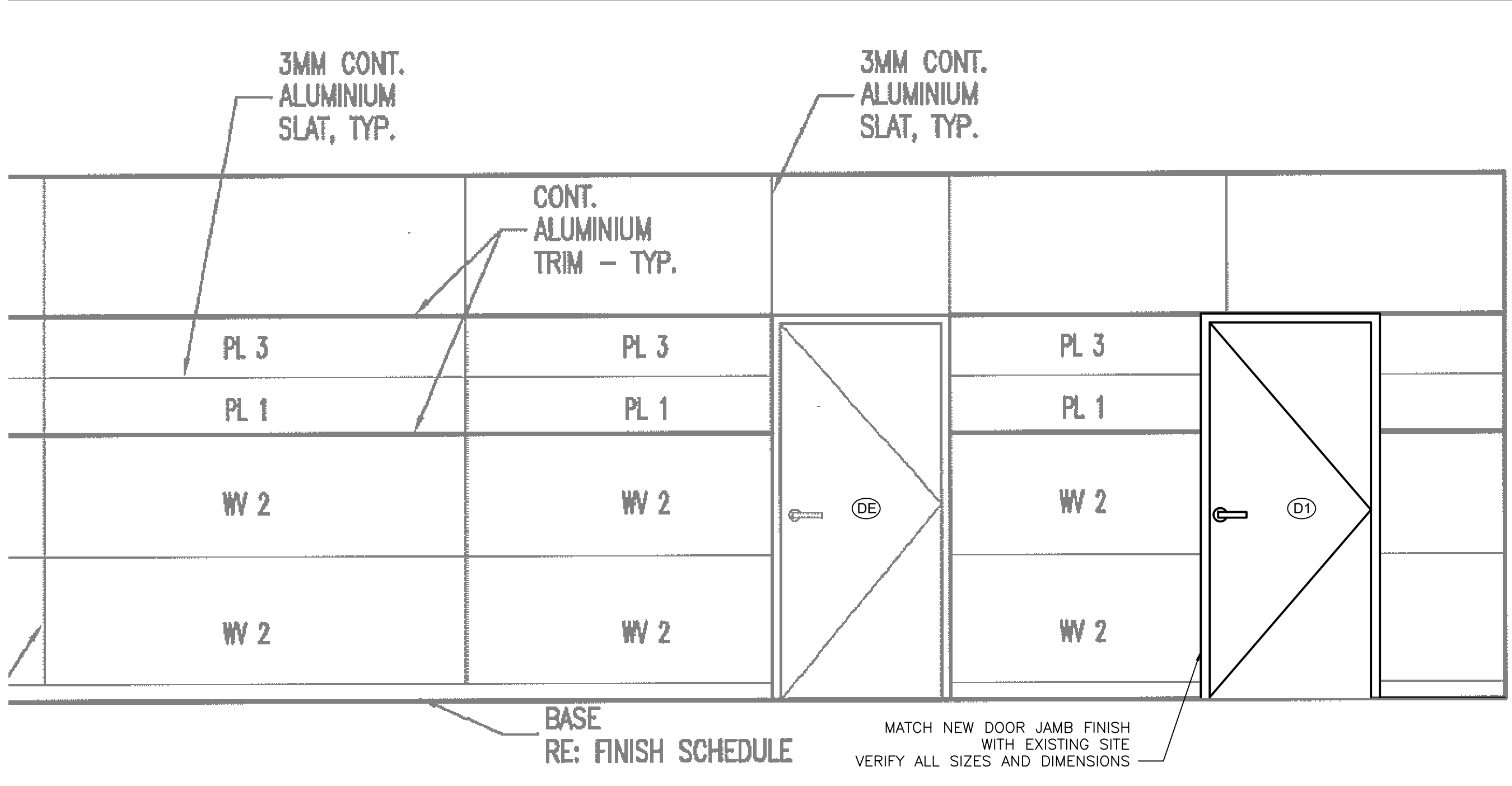
PROJECT TITLE:
FACILITY BUILDING INTERIOR RENOVATION IQALUIT - NUNAVUT
 SHEET TITLE:
PARTIAL MAIN FLOOR PLAN
 PROJECT NUMBER:
17-007-01-30

00	ISSUED FOR CONSTRUCTION	17 04 28	RS
REV. #	REVISION	DATE (YY MM DD)	REV. BY

REV. #	REVISION	DATE (YY MM DD)	REV. BY
--------	----------	-----------------	---------

SCALE:
AS NOTED
 DATE (YY MM DD):
17 04 28

DRAWING NUMBER:
A2.0
 REVISION NUMBER:
00



1 INTERIOR ELEVATION CORRIDOR
 A2.1 A2.1 SCALE: 1/2"=1'-0"



PROJECT TITLE:
 FACILITY BUILDING INTERIOR RENOVATION IQALUIT - NUNAVUT
 SHEET TITLE:
 HALLWAY ELEVATIONS
 PROJECT NUMBER:
 17-007-01-30

00	ISSUED FOR CONSTRUCTION	17 04 28	RS
REV. #	REVISION	DATE (YY MM DD)	REV. BY

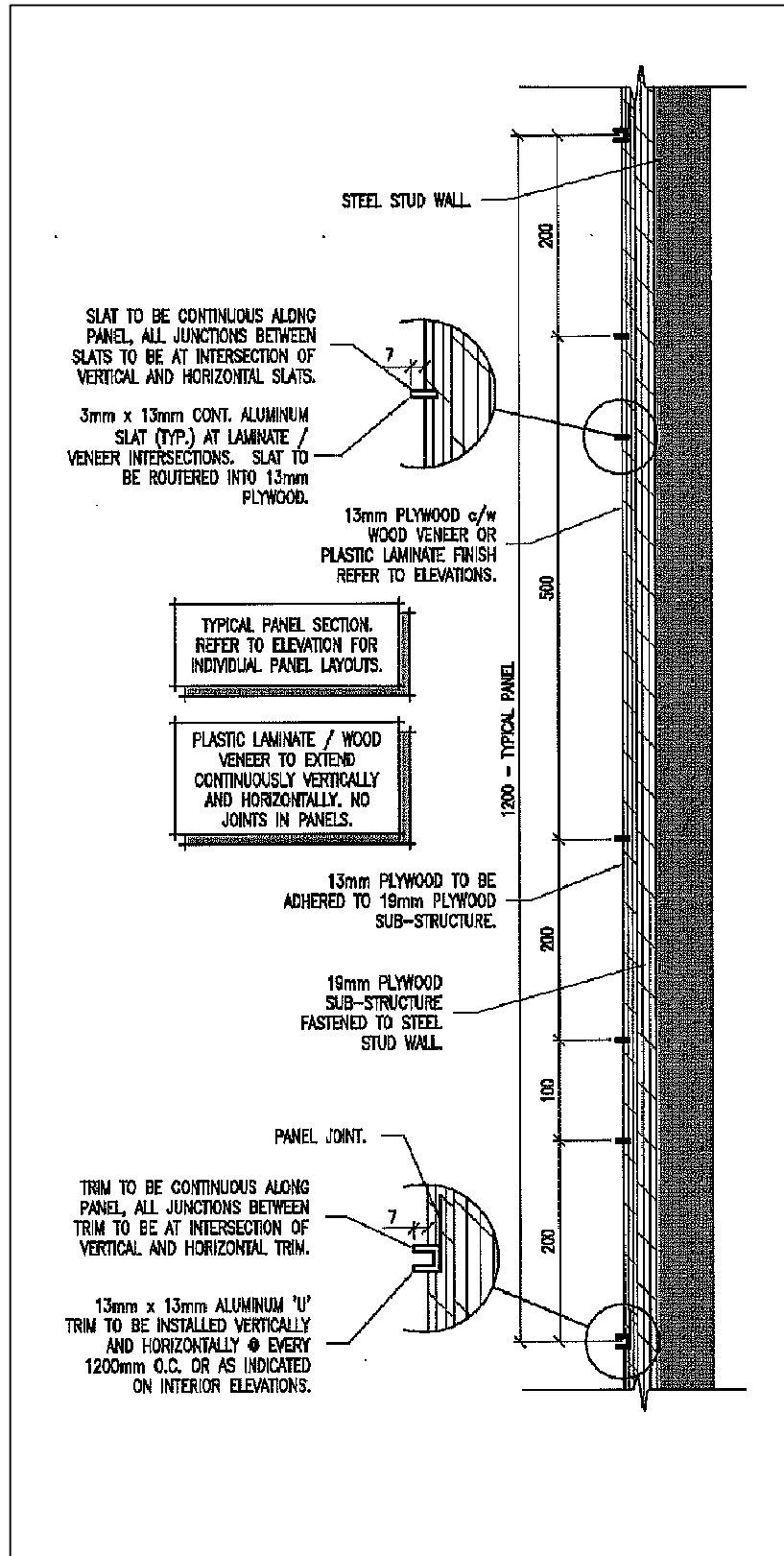
REV. #	REVISION	DATE (YY MM DD)	REV. BY
--------	----------	-----------------	---------

SCALE:
 AS NOTED
 DATE (YY MM DD):
 17 04 28

DRAWING NUMBER:

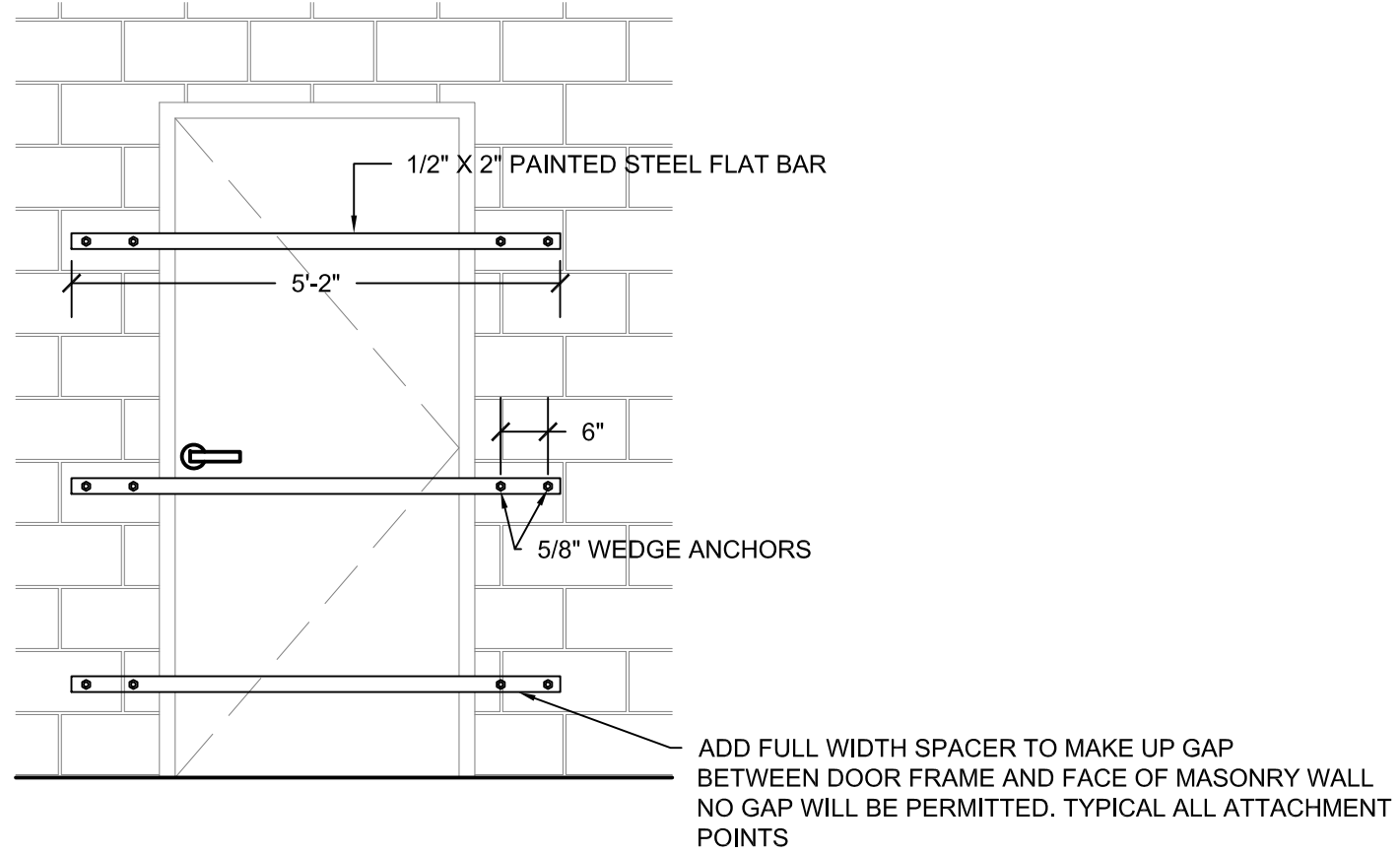
A2.1

REVISION NUMBER:
 00



1 TYPICAL PANEL SECTION
A2.2 SCALE: NTS

DOOR SCHEDULE (D###)															
MARK	SIZE	DOOR TYPE	DOOR ELEV.	DOOR CORE	DOOR FINISH	DOOR COLOR	DOOR GAUGE	FRAME MATERIAL	FRAME TYPE	FRAME FINISH	FRAME COLOR	FRAME GAUGE	HARDWARE	RATING	REMARKS
D1	36" X 7'-0" X 1 3/4" SITE VERIFY AND MATCH EXISTING	STEEL	1	HC	PAINTED	MATCH EXISTING	18 GA	STEEL	WELDED	PAINTED	MATCH EXISTING	16 GA	1	90 MIN	DOOR TO BE TEMPERATURE RISE RATED DOOR



2 DOOR ELEVATION FROM INSIDE ROOM 1-54
A2.0 | A2.2 SCALE: 1/2"=1'-0"



PROJECT TITLE:
FACILITY BUILDING INTERIOR RENOVATION IQALUIT - NUNAVUT

SHEET TITLE:
HALLWAY ELEVATIONS

PROJECT NUMBER:
17-007-01-30

00	ISSUED FOR CONSTRUCTION	17 04 28	RS
REV. #	REVISION	DATE (YY MM DD)	REV. BY

REV. #	REVISION	DATE (YY MM DD)	REV. BY

SCALE:
AS NOTED

DATE (YY MM DD):
17 04 28

DRAWING NUMBER:
A2.2

REVISION NUMBER:
00

1. Telecommunications Cabling - General Requirements

a. All new installations of data cabling for Managed LANs:

- i. Must be Category 5e (UTP) certified Installation.
- ii. Will be installed based on a zoned system.

1. The zone must not exceed 55.7 square meters (600 square feet).

a. Must be installed on a "home-run" basis from the user area to the telecommunication closet or the area assigned by Network Services.

iii. Which is run overhead, must be supported by either meshed-basket type data cable trays, or "J-hooks", installed in accordance with Category 6 specifications. The use of ladder-style or electrical cable trays is not permitted.

1. If conduits or trays are required, the bidder will provide a detailed design plan, including the physical layout, size, length, and type.

iv. Where necessary to bundle cables together, use hook and loop style strapping of a width no less than one (1)cm (3/8in). **Plastic wire ties must not be utilized.**

b. If solid walls cannot be accessed then surface mount wire mold may be used.

i. The wire mold run must be continuous from the termination box to the floor or ceiling. At no point during the run must the cable be exposed.

c. All cables must be clearly labeled with self-laminating ID labels at no more than 0.2 meters from the user area termination point of the cable.

d. All cable not installed in conduit, wire mold and/or trays must be supported by J-hooks attached to the structure of the building every two meters or less.

e. All network cabling installations must comply with:

- i. Municipal By-Laws and Building Codes
- ii. Provincial Building and Electrical Codes
- iii. The National Building Code
- iv. The Canadian Labor Code
- v. The National Fire Code
- vi. The Canadian Electrical Code

2. Telecommunications Cabling - Specifications

a. Each identified workspace shall have a minimum of three (two Data and one Voice/Data) Unshielded Twisted Pair ports (RJ45) installed.

b. All structured cabling shall consist of Belden/CDT Category 5e rated infrastructure.

c. Unless physical limitations prevent it, the terminations will all be in the same wall port at the user area end, with a flush mounted wall port.

d. All drops will:

i. Data Terminate in room 101 at existing data patch panel. Voice terminate in room 122 at existing bix boxes.

1. In the event that termination inside the LAN cabinet is not physically attainable, the termination strip can be mounted in a common-facilities cabinet or similar implement.

a. This situation can only exist if approved by the Network Services representative, and is on an exception basis.

b. Electronic floor/as-built plans of all new construction, including the location and identification number of the data ports, will be provided to the Network Services representative upon completion of the project.

ii. Be punched down using the TIA-568-A jack format.

iii. Terminate in high capacity patch panels with a density of 48 ports per 2U of rail space, supplied by the contractor.

1. There shall be one patch panel per functional grouping i.e. One panel for user data drops, one panel for user telephone drops and one panel for telephone trunk lines.

a. Refer to appendix for diagram indicating required patch panel locations.

b. Install 2U horizontal cable manager below every patch panel.

2. Termination jacks at the patch panel should be colour matched to patch panel.

a. The preferred colour is white for voice and blue for data.

3. Drops in patch panels will be labeled consecutively in the patch panel, starting with the top left port and ending with the bottom right port.

a. Must be labeled using a professional labeler. They cannot be hand written.

b. Numbering starts at port 1 and ends at port 48, per panel.

c. Each panel will have a prefix label to denote its function.

i. All user data patch panels will be terminate data wiring drops running to the user data ports.

1. The labeling scheme for user data patch panels will be D-A-01 through D-A-48 for the first panel, and D-B-01 through D-B-48 for the second panel, etc.

ii. All user telephone patch panels will terminate telephone wiring drops running to the user telephone ports.

1. The labeling scheme for user telephone patch panels will be V-A-01 through V-A-48 for the first panel, and V-B-01 through V-B-48 for the second panel, etc.

iv. Have a **minimum of five (5) meter cable reserve on the user end and three (3) meter reserve on the distribution end**, for future relocation. The cable reserves must not be coiled on the distribution end. For sites with more than 240 ports, the distribution end can be scaled back. All slack at the distribution end must be bundled in an "S" or "U" format.

v. Be tested by the installer to comply with the Category 5e specifications noted in TIA-568-B.2, with soft copies of the test results provided to the Regional Network Services representative for the project.

vi. Terminate at the user area in a wall plate or furniture mounted MUTOA.

vii. Have user end jacks colored:

1. Blue for data (colour matches faceplate).

2. White for phone.

viii. Be labeled with a professional labeler at the user area end. Drop labels cannot be hand written.

1. Identification will be the same as used in the patch panel end of run.

ix. Be located and identified on electrical page of as-built drawings.

e. Supply Patch Cables

i. Of the same manufacturer as the horizontal cabling.

ii. Of the same specification as the horizontal cabling.

iii. Which are bootless and snag less with strain relief (UTP).

iv. Of lengths and quantities consisting of:

1. A quantity of 15 foot Category 5e white or grey patch cable equal to 2/3rd the total user are drops.

2. A quantity of 4 foot Category 5e white or grey patch cables equal to 2/9ths the total user area drops.

3. Preferred Component Manufacturer and Installer Certification

a. Belden/CDT structured cabling products must be used. Belden has a proven track record with the owner and by

using Belden products, maintains uniformity throughout the organization.

b. The Contractor shall be a Belden Certified System Vendor (CSV) experienced and trained by the manufacturing company, in all aspects of the placement, terminating, connecting and testing of products described herein and provide certificate of proof prior to start of work.

c. The Contractor shall have a minimum of one (1) RCDD "Registered Communications Distribution Designer" recognized by BICSI "Building Industry Consulting Services International" on staff at local offices (the term "Local offices" as applied to RCDD, Registered Communications Distribution Designers, refers to anywhere in the Province of Manitoba) and provide certificate of proof prior to start of work.

d. The Contractor shall be experienced in all aspects of this work and shall be required to demonstrate direct experience on recent systems of similar type and size. The Contractor shall demonstrate proven expertise in the implementation of network cabling. Expertise can be illustrated through the inclusion of details of at least three projects involving the design and installation of a Category 5e, Category 6, or Augmented Category 6 (Cat 6A) balanced twisted-pair cabling system within the past two-year period. Names and contact information for each of the three projects shall be included. The Contractor shall own and maintain tools and equipment necessary for successful installation and testing of optical and proposed Category 6 metallic premise distribution systems and have personnel who are adequately trained in the uses of such tools and equipment.

4. Shop Drawings

a. Submit shop drawings and product data, for:

- i. UTP communication cable.
- ii. Cable management.
- iii. Patch panels and patch cords.
- iv. Communication Outlets.
- v. Bix mounts, connectors, adapters.

5. Warranty

a. The warranty period with regard to the project is for 25 years from the date of Substantial Performance of the Work or those periods specified in the Contract Documents for certain portions of the Work of Products.

b. The Contractor shall be responsible for the proper performance of the work.

c. The Contractor shall correct promptly, at the Contractor's expense, defects or deficiencies in the Work which appear prior to and during the warranty periods specified in the Contract Documents.

d. The Owner, shall promptly give the Contractor notice in writing of observed defects and deficiencies that occur during the warranty period.

e. The Contractor shall correct or pay for damages resulting from corrections made under the requirements of paragraph 1.8.3.

f. The Contractor shall be responsible for obtaining Product warranties in excess of one year on behalf of the Owner from the manufacturer. These product warranties shall be issued by the manufacturer to the benefit of the Owner.

g. The Contractor shall provide a twenty-five (25) year Extended Product Warranty and Lifetime Application Assurance Warranty for the Communications Network. This warranty shall be backed up by the manufacturer and taken over by the manufacturer or his representative if the Contractor fails to follow through with the requirements of the warranty.

h. The Communications Network is defined as all required passive equipment and cabling, including hardware, terminations, and jacks, configured to provide data and voice connectivity from each data or voice outlet provided by the Contractor in this Contract.

i. The System Assurance shall cover the applications that the installed system is designed to support for a twenty-five (25) year period.

j. The Extended Product Warranty and the Systems Assurance together comprise the Structured Cabling System Quality Assurance Program.

k. Upon successful completion of the Structured Cabling System installation and subsequent testing by certified technical personnel the Contractor shall provide to the Owner a numbered certificate registering the installation.



PROJECT TITLE:
FACILITY BUILDING INTERIOR RENOVATION IQALUIT - NUNAVUT

SHEET TITLE:
HALLWAY ELEVATIONS

PROJECT NUMBER:
17-007-01-30

00	ISSUED FOR CONSTRUCTION	17 04 28	RS
REV. #	REVISION	DATE (YY MM DD)	REV. BY

REV. #	REVISION	DATE (YY MM DD)	REV. BY
--------	----------	-----------------	---------


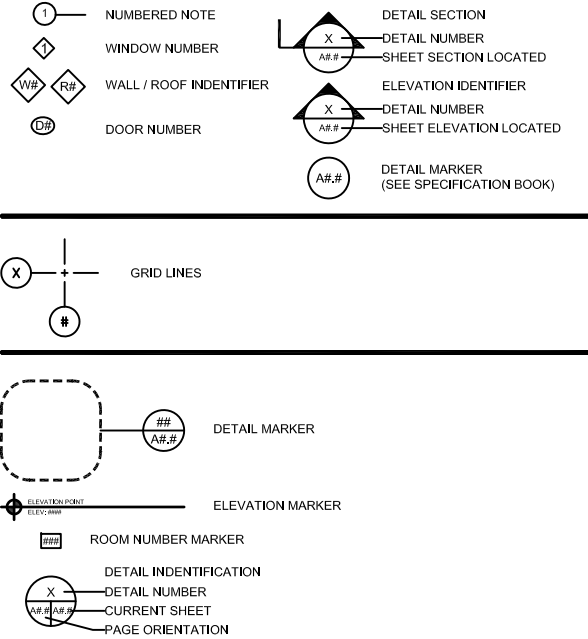
SCALE:
AS NOTED
DATE (YY MM DD):
17 04 28

DRAWING NUMBER:

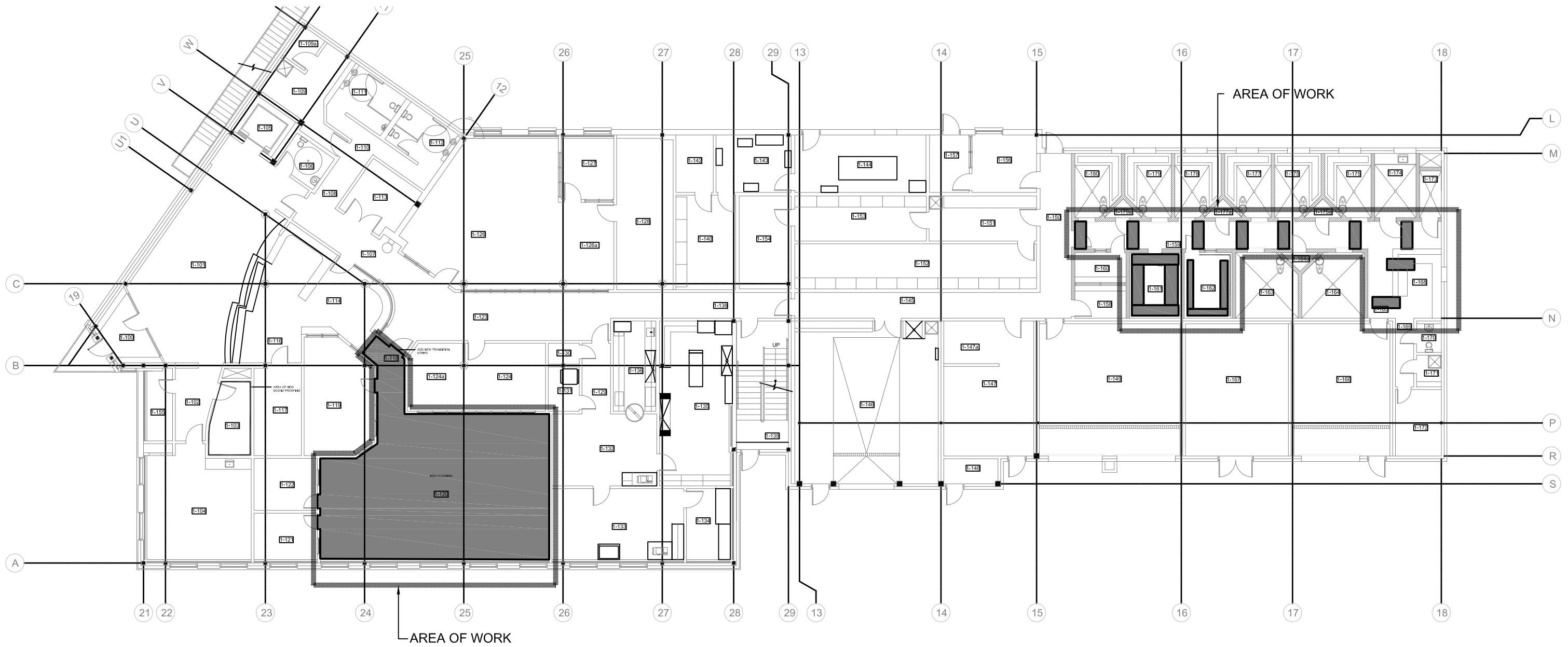
A2.3

REVISION NUMBER:
00

FACILITY BUILDING INTERIOR RENOVATION SOUND PROOFING AND FLOORING IQALUIT, NUNAVUT CONSTRUCTION

DRAWING LIST	CONSULTANT LIST	DRAWING SYMBOLS	ABBREVIATION LIST																																																																																																																																																																																																																																																																																																																																																																
<p><u>DRAWING LIST</u></p> <p>A0.0 TITLE PAGE</p> <p>A1.0 KEY PLAN</p> <p>A2.0 PARTIAL MAIN FLOOR PLAN</p> <p>A2.1 PARTIAL MAIN FLOOR PLAN</p> <p>A2.2 PARTIAL MAIN FLOOR PLAN</p>	<p>PRIME CONSULTANT:</p>  <p>can tec ENGINEERING AND DRAFTING <small>MEMBER OF THE CANADIAN SOCIETY OF ENGINEERS</small></p>		<table border="1" style="width: 100%; border-collapse: collapse; font-size: 8px;"> <tr><td>ACOUSTIC</td><td>ACST</td><td>DRYWALL</td><td>DW</td><td>LAVATORY</td><td>LAV</td><td>ROOM</td><td>RM</td></tr> <tr><td>ADHESIVE</td><td>ADH</td><td>EACH</td><td>EA</td><td>LAY-IN ACOUSTIC TILE</td><td>LAT</td><td>ROUGH OPENING</td><td>RO</td></tr> <tr><td>ADJUSTABLE</td><td>ADJ</td><td>EACH WAY</td><td>EW</td><td>LEFT HAND</td><td>LH</td><td>RUBBER</td><td>RB</td></tr> <tr><td>AGGREGATE</td><td>AGGR</td><td>EAST</td><td>E</td><td>LEFT HAND REVERSE</td><td>LHR</td><td>RVT</td><td>RESILIENT SHEET FLOORING</td></tr> <tr><td>AIR VAPOUR BARRIER</td><td>AVB</td><td>ELECTRICAL</td><td>ELEC</td><td>LENGTH</td><td>LG</td><td>SCHEDULE</td><td>SCHED</td></tr> <tr><td>ALTERNATE</td><td>ALT</td><td>ELEVATION</td><td>EL</td><td>LIGHT</td><td>LT</td><td>SCREW</td><td>SCR</td></tr> <tr><td>ALUMINUM</td><td>ALUM</td><td>ELEVATOR</td><td>ELEV</td><td>LOUVRE</td><td>LVR</td><td>SECTION</td><td>SECT</td></tr> <tr><td>APARTMENT</td><td>APT</td><td>EPOXY</td><td>EP</td><td>MANUFACTURE</td><td>MFG</td><td>SELF ADHESIVE</td><td>SA</td></tr> <tr><td>APPROXIMATE</td><td>APPROX</td><td>EQUAL</td><td>EQ</td><td>MARK</td><td>MK</td><td>SHEATHING</td><td>SHTG</td></tr> <tr><td>ARCHITECTURE</td><td>ARCH</td><td>EQUALLY SPACED</td><td>EQ SP</td><td>MASONRY OPENING</td><td>MO</td><td>SHEET</td><td>SHT</td></tr> <tr><td>BEAM</td><td>BM</td><td>EQUIPMENT</td><td>EQUIP</td><td>MATERIAL</td><td>MAT</td><td>SHEET VINYL</td><td>SV</td></tr> <tr><td>BENCH MARK</td><td>BM</td><td>EXISTING</td><td>EXIST</td><td>MECHANICAL</td><td>MECH</td><td>SIMILAR</td><td>SIM</td></tr> <tr><td>BETWEEN</td><td>BTWN</td><td>EXPANSION</td><td>EXP</td><td>MINIMUM</td><td>MIN</td><td>SOLID CORE</td><td>SC</td></tr> <tr><td>BLOCK</td><td>BLK</td><td>EXTERIOR</td><td>EXT</td><td>MISCELLANEOUS</td><td>MISC</td><td>SOUTH</td><td>S</td></tr> <tr><td>BOARD</td><td>BD</td><td>EXTRUDE</td><td>EXTR</td><td>NEAR FACE</td><td>NF</td><td>SPECIFICATION</td><td>SPEC</td></tr> <tr><td>BOTH SIDES</td><td>BS</td><td>FACE TO FACE</td><td>F/F</td><td>NEAR SIDE</td><td>NS</td><td>SPRUCE</td><td>SPR</td></tr> <tr><td>BOTH WAYS</td><td>BW</td><td>FAR SIDE</td><td>FS</td><td>NORTH</td><td>N</td><td>SPRUCE, PINE OR FIR</td><td>S/P/F</td></tr> <tr><td>BOTTOM</td><td>BOT</td><td>FIBREBOARD</td><td>FBRBD</td><td>NOT APPLICABLE</td><td>N/A</td><td>STAIN</td><td>ST</td></tr> <tr><td>BUILDING</td><td>BLDG</td><td>FINISH</td><td>FIN</td><td>NOT IN CONTRACT</td><td>NIC</td><td>STAINLESS STEEL</td><td>SS</td></tr> <tr><td>CARPET</td><td>CPT</td><td>FLOOR</td><td>FL</td><td>NOT TO SCALE</td><td>NTS</td><td>STANDARD</td><td>STD</td></tr> <tr><td>CAST IRON</td><td>CI</td><td>FLOOR DRAIN</td><td>FD</td><td>NUMBER</td><td>NO</td><td>STEEL</td><td>STL</td></tr> <tr><td>CEILING</td><td>CLG</td><td>FLOORING</td><td>FLG</td><td>ON CENTRE</td><td>O/C</td><td>STRUCTURAL</td><td>STRUCT</td></tr> <tr><td>CEMENT BOARD</td><td>CBD</td><td>FLUORESCENT</td><td>FLR</td><td>OUT TO OUT</td><td>O/O</td><td>SQUARE FEET</td><td>SF</td></tr> <tr><td>CENTRE</td><td>CTR</td><td>FOOTING</td><td>FTG</td><td>OUTSIDE DIAMETER</td><td>OD</td><td>TEMPORARY</td><td>TEMP</td></tr> <tr><td>CENTRE TO CENTRE</td><td>C/C</td><td>FOUNDATION</td><td>FDN</td><td>OUTSIDE FACE</td><td>OF</td><td>THROUGH</td><td>THRU</td></tr> <tr><td>CERAMIC TILE</td><td>CT</td><td>FULL SIZE</td><td>FS</td><td>OVERHEAD</td><td>OH</td><td>TO MATCH EXISTING</td><td>TME</td></tr> <tr><td>CIRCLE</td><td>CIRC</td><td>GALVANIZED</td><td>GALV</td><td>PAINT</td><td>PT</td><td>TONGUE AND GROOVE</td><td>T&G</td></tr> <tr><td>CLEAR</td><td>CLR</td><td>GALVANIZED IRON</td><td>GI</td><td>PAINTED</td><td>PTD</td><td>TOP AND BOTTOM</td><td>T&B</td></tr> <tr><td>COLUMN</td><td>COL</td><td>GAUGE</td><td>GA</td><td>PARTITION</td><td>PTN</td><td>TOP OF</td><td>T/O</td></tr> <tr><td>COMPLETE WITH</td><td>C/W</td><td>GLASS</td><td>GL</td><td>PLYWOOD</td><td>PLYWD</td><td>TYPICAL</td><td>TYP</td></tr> <tr><td>CONCRETE</td><td>CONC</td><td>HARDWARE</td><td>HDW</td><td>PRECAST</td><td>PC</td><td>UNDER SIDE</td><td>U/S</td></tr> <tr><td>CONCRETE BLOCK</td><td>CBLK</td><td>HEIGHT</td><td>HGT</td><td>PRECAST CONCRETE</td><td>PC CONC</td><td>UNDERCUT</td><td>UCUT</td></tr> <tr><td>CONSTRUCTION</td><td>CONST</td><td>HEXAGON</td><td>HEX</td><td>PREFABRICATION</td><td>PREFAB</td><td>URINAL</td><td>UR</td></tr> <tr><td>CONTINUOUS</td><td>CONT</td><td>HOLLOW CORE</td><td>HC</td><td>PREFINISHED</td><td>PREFIN</td><td>VAPOUR BARRIER</td><td>VB</td></tr> <tr><td>CONTROL JOINT</td><td>CJ</td><td>HOLLOW METAL</td><td>HM</td><td>PRESSED STEEL</td><td>PS</td><td>VERTICAL</td><td>VERT</td></tr> <tr><td>COUNTERSINK</td><td>CSK</td><td>HORIZONTAL</td><td>HORIZ</td><td>QUANTITY</td><td>QTY</td><td>VINYL ASBESTOS TILE</td><td>VAT</td></tr> <tr><td>COVED SHEET VINYL</td><td>CSV</td><td>INCLUSIVE</td><td>INCL</td><td>QUARRY TILE</td><td>QT</td><td>VINYL COVE BASE</td><td>VCB</td></tr> <tr><td>DETAIL</td><td>DTL</td><td>INSIDE DIAMETER</td><td>ID</td><td>RADIUS</td><td>R</td><td>VINYL TILE</td><td>VT</td></tr> <tr><td>DEMOLISH</td><td>DEMO</td><td>INSIDE FACE</td><td>IF</td><td>RAINWATER LEADER</td><td>RWL</td><td>VINYL WALL COVERING</td><td>VWC</td></tr> <tr><td>DIAGONAL</td><td>DIAG</td><td>INSULATE</td><td>INSUL</td><td>REFERENCE</td><td>REF</td><td>WATER CLOSET</td><td>WC</td></tr> <tr><td>DIAMETER</td><td>DIA</td><td>INTERIOR</td><td>INT</td><td>REINFORCE</td><td>REINF</td><td>WEATHERSTRIPPING</td><td>WS</td></tr> <tr><td>DIMENSION</td><td>DIM</td><td>JOINT</td><td>JT</td><td>RESILIENT</td><td>RESIL</td><td>WEIGHT</td><td>WT</td></tr> <tr><td>DOOR</td><td>DR</td><td>JOIST</td><td>JST</td><td>REVERSE</td><td>RVS</td><td>WITH</td><td>W/</td></tr> <tr><td>DOUBLE</td><td>DBL</td><td>KNOCK DOWN</td><td>KD</td><td>REVISION</td><td>REV</td><td>WITHOUT</td><td>W/O</td></tr> </table>	ACOUSTIC	ACST	DRYWALL	DW	LAVATORY	LAV	ROOM	RM	ADHESIVE	ADH	EACH	EA	LAY-IN ACOUSTIC TILE	LAT	ROUGH OPENING	RO	ADJUSTABLE	ADJ	EACH WAY	EW	LEFT HAND	LH	RUBBER	RB	AGGREGATE	AGGR	EAST	E	LEFT HAND REVERSE	LHR	RVT	RESILIENT SHEET FLOORING	AIR VAPOUR BARRIER	AVB	ELECTRICAL	ELEC	LENGTH	LG	SCHEDULE	SCHED	ALTERNATE	ALT	ELEVATION	EL	LIGHT	LT	SCREW	SCR	ALUMINUM	ALUM	ELEVATOR	ELEV	LOUVRE	LVR	SECTION	SECT	APARTMENT	APT	EPOXY	EP	MANUFACTURE	MFG	SELF ADHESIVE	SA	APPROXIMATE	APPROX	EQUAL	EQ	MARK	MK	SHEATHING	SHTG	ARCHITECTURE	ARCH	EQUALLY SPACED	EQ SP	MASONRY OPENING	MO	SHEET	SHT	BEAM	BM	EQUIPMENT	EQUIP	MATERIAL	MAT	SHEET VINYL	SV	BENCH MARK	BM	EXISTING	EXIST	MECHANICAL	MECH	SIMILAR	SIM	BETWEEN	BTWN	EXPANSION	EXP	MINIMUM	MIN	SOLID CORE	SC	BLOCK	BLK	EXTERIOR	EXT	MISCELLANEOUS	MISC	SOUTH	S	BOARD	BD	EXTRUDE	EXTR	NEAR FACE	NF	SPECIFICATION	SPEC	BOTH SIDES	BS	FACE TO FACE	F/F	NEAR SIDE	NS	SPRUCE	SPR	BOTH WAYS	BW	FAR SIDE	FS	NORTH	N	SPRUCE, PINE OR FIR	S/P/F	BOTTOM	BOT	FIBREBOARD	FBRBD	NOT APPLICABLE	N/A	STAIN	ST	BUILDING	BLDG	FINISH	FIN	NOT IN CONTRACT	NIC	STAINLESS STEEL	SS	CARPET	CPT	FLOOR	FL	NOT TO SCALE	NTS	STANDARD	STD	CAST IRON	CI	FLOOR DRAIN	FD	NUMBER	NO	STEEL	STL	CEILING	CLG	FLOORING	FLG	ON CENTRE	O/C	STRUCTURAL	STRUCT	CEMENT BOARD	CBD	FLUORESCENT	FLR	OUT TO OUT	O/O	SQUARE FEET	SF	CENTRE	CTR	FOOTING	FTG	OUTSIDE DIAMETER	OD	TEMPORARY	TEMP	CENTRE TO CENTRE	C/C	FOUNDATION	FDN	OUTSIDE FACE	OF	THROUGH	THRU	CERAMIC TILE	CT	FULL SIZE	FS	OVERHEAD	OH	TO MATCH EXISTING	TME	CIRCLE	CIRC	GALVANIZED	GALV	PAINT	PT	TONGUE AND GROOVE	T&G	CLEAR	CLR	GALVANIZED IRON	GI	PAINTED	PTD	TOP AND BOTTOM	T&B	COLUMN	COL	GAUGE	GA	PARTITION	PTN	TOP OF	T/O	COMPLETE WITH	C/W	GLASS	GL	PLYWOOD	PLYWD	TYPICAL	TYP	CONCRETE	CONC	HARDWARE	HDW	PRECAST	PC	UNDER SIDE	U/S	CONCRETE BLOCK	CBLK	HEIGHT	HGT	PRECAST CONCRETE	PC CONC	UNDERCUT	UCUT	CONSTRUCTION	CONST	HEXAGON	HEX	PREFABRICATION	PREFAB	URINAL	UR	CONTINUOUS	CONT	HOLLOW CORE	HC	PREFINISHED	PREFIN	VAPOUR BARRIER	VB	CONTROL JOINT	CJ	HOLLOW METAL	HM	PRESSED STEEL	PS	VERTICAL	VERT	COUNTERSINK	CSK	HORIZONTAL	HORIZ	QUANTITY	QTY	VINYL ASBESTOS TILE	VAT	COVED SHEET VINYL	CSV	INCLUSIVE	INCL	QUARRY TILE	QT	VINYL COVE BASE	VCB	DETAIL	DTL	INSIDE DIAMETER	ID	RADIUS	R	VINYL TILE	VT	DEMOLISH	DEMO	INSIDE FACE	IF	RAINWATER LEADER	RWL	VINYL WALL COVERING	VWC	DIAGONAL	DIAG	INSULATE	INSUL	REFERENCE	REF	WATER CLOSET	WC	DIAMETER	DIA	INTERIOR	INT	REINFORCE	REINF	WEATHERSTRIPPING	WS	DIMENSION	DIM	JOINT	JT	RESILIENT	RESIL	WEIGHT	WT	DOOR	DR	JOIST	JST	REVERSE	RVS	WITH	W/	DOUBLE	DBL	KNOCK DOWN	KD	REVISION	REV	WITHOUT	W/O
ACOUSTIC	ACST	DRYWALL	DW	LAVATORY	LAV	ROOM	RM																																																																																																																																																																																																																																																																																																																																																												
ADHESIVE	ADH	EACH	EA	LAY-IN ACOUSTIC TILE	LAT	ROUGH OPENING	RO																																																																																																																																																																																																																																																																																																																																																												
ADJUSTABLE	ADJ	EACH WAY	EW	LEFT HAND	LH	RUBBER	RB																																																																																																																																																																																																																																																																																																																																																												
AGGREGATE	AGGR	EAST	E	LEFT HAND REVERSE	LHR	RVT	RESILIENT SHEET FLOORING																																																																																																																																																																																																																																																																																																																																																												
AIR VAPOUR BARRIER	AVB	ELECTRICAL	ELEC	LENGTH	LG	SCHEDULE	SCHED																																																																																																																																																																																																																																																																																																																																																												
ALTERNATE	ALT	ELEVATION	EL	LIGHT	LT	SCREW	SCR																																																																																																																																																																																																																																																																																																																																																												
ALUMINUM	ALUM	ELEVATOR	ELEV	LOUVRE	LVR	SECTION	SECT																																																																																																																																																																																																																																																																																																																																																												
APARTMENT	APT	EPOXY	EP	MANUFACTURE	MFG	SELF ADHESIVE	SA																																																																																																																																																																																																																																																																																																																																																												
APPROXIMATE	APPROX	EQUAL	EQ	MARK	MK	SHEATHING	SHTG																																																																																																																																																																																																																																																																																																																																																												
ARCHITECTURE	ARCH	EQUALLY SPACED	EQ SP	MASONRY OPENING	MO	SHEET	SHT																																																																																																																																																																																																																																																																																																																																																												
BEAM	BM	EQUIPMENT	EQUIP	MATERIAL	MAT	SHEET VINYL	SV																																																																																																																																																																																																																																																																																																																																																												
BENCH MARK	BM	EXISTING	EXIST	MECHANICAL	MECH	SIMILAR	SIM																																																																																																																																																																																																																																																																																																																																																												
BETWEEN	BTWN	EXPANSION	EXP	MINIMUM	MIN	SOLID CORE	SC																																																																																																																																																																																																																																																																																																																																																												
BLOCK	BLK	EXTERIOR	EXT	MISCELLANEOUS	MISC	SOUTH	S																																																																																																																																																																																																																																																																																																																																																												
BOARD	BD	EXTRUDE	EXTR	NEAR FACE	NF	SPECIFICATION	SPEC																																																																																																																																																																																																																																																																																																																																																												
BOTH SIDES	BS	FACE TO FACE	F/F	NEAR SIDE	NS	SPRUCE	SPR																																																																																																																																																																																																																																																																																																																																																												
BOTH WAYS	BW	FAR SIDE	FS	NORTH	N	SPRUCE, PINE OR FIR	S/P/F																																																																																																																																																																																																																																																																																																																																																												
BOTTOM	BOT	FIBREBOARD	FBRBD	NOT APPLICABLE	N/A	STAIN	ST																																																																																																																																																																																																																																																																																																																																																												
BUILDING	BLDG	FINISH	FIN	NOT IN CONTRACT	NIC	STAINLESS STEEL	SS																																																																																																																																																																																																																																																																																																																																																												
CARPET	CPT	FLOOR	FL	NOT TO SCALE	NTS	STANDARD	STD																																																																																																																																																																																																																																																																																																																																																												
CAST IRON	CI	FLOOR DRAIN	FD	NUMBER	NO	STEEL	STL																																																																																																																																																																																																																																																																																																																																																												
CEILING	CLG	FLOORING	FLG	ON CENTRE	O/C	STRUCTURAL	STRUCT																																																																																																																																																																																																																																																																																																																																																												
CEMENT BOARD	CBD	FLUORESCENT	FLR	OUT TO OUT	O/O	SQUARE FEET	SF																																																																																																																																																																																																																																																																																																																																																												
CENTRE	CTR	FOOTING	FTG	OUTSIDE DIAMETER	OD	TEMPORARY	TEMP																																																																																																																																																																																																																																																																																																																																																												
CENTRE TO CENTRE	C/C	FOUNDATION	FDN	OUTSIDE FACE	OF	THROUGH	THRU																																																																																																																																																																																																																																																																																																																																																												
CERAMIC TILE	CT	FULL SIZE	FS	OVERHEAD	OH	TO MATCH EXISTING	TME																																																																																																																																																																																																																																																																																																																																																												
CIRCLE	CIRC	GALVANIZED	GALV	PAINT	PT	TONGUE AND GROOVE	T&G																																																																																																																																																																																																																																																																																																																																																												
CLEAR	CLR	GALVANIZED IRON	GI	PAINTED	PTD	TOP AND BOTTOM	T&B																																																																																																																																																																																																																																																																																																																																																												
COLUMN	COL	GAUGE	GA	PARTITION	PTN	TOP OF	T/O																																																																																																																																																																																																																																																																																																																																																												
COMPLETE WITH	C/W	GLASS	GL	PLYWOOD	PLYWD	TYPICAL	TYP																																																																																																																																																																																																																																																																																																																																																												
CONCRETE	CONC	HARDWARE	HDW	PRECAST	PC	UNDER SIDE	U/S																																																																																																																																																																																																																																																																																																																																																												
CONCRETE BLOCK	CBLK	HEIGHT	HGT	PRECAST CONCRETE	PC CONC	UNDERCUT	UCUT																																																																																																																																																																																																																																																																																																																																																												
CONSTRUCTION	CONST	HEXAGON	HEX	PREFABRICATION	PREFAB	URINAL	UR																																																																																																																																																																																																																																																																																																																																																												
CONTINUOUS	CONT	HOLLOW CORE	HC	PREFINISHED	PREFIN	VAPOUR BARRIER	VB																																																																																																																																																																																																																																																																																																																																																												
CONTROL JOINT	CJ	HOLLOW METAL	HM	PRESSED STEEL	PS	VERTICAL	VERT																																																																																																																																																																																																																																																																																																																																																												
COUNTERSINK	CSK	HORIZONTAL	HORIZ	QUANTITY	QTY	VINYL ASBESTOS TILE	VAT																																																																																																																																																																																																																																																																																																																																																												
COVED SHEET VINYL	CSV	INCLUSIVE	INCL	QUARRY TILE	QT	VINYL COVE BASE	VCB																																																																																																																																																																																																																																																																																																																																																												
DETAIL	DTL	INSIDE DIAMETER	ID	RADIUS	R	VINYL TILE	VT																																																																																																																																																																																																																																																																																																																																																												
DEMOLISH	DEMO	INSIDE FACE	IF	RAINWATER LEADER	RWL	VINYL WALL COVERING	VWC																																																																																																																																																																																																																																																																																																																																																												
DIAGONAL	DIAG	INSULATE	INSUL	REFERENCE	REF	WATER CLOSET	WC																																																																																																																																																																																																																																																																																																																																																												
DIAMETER	DIA	INTERIOR	INT	REINFORCE	REINF	WEATHERSTRIPPING	WS																																																																																																																																																																																																																																																																																																																																																												
DIMENSION	DIM	JOINT	JT	RESILIENT	RESIL	WEIGHT	WT																																																																																																																																																																																																																																																																																																																																																												
DOOR	DR	JOIST	JST	REVERSE	RVS	WITH	W/																																																																																																																																																																																																																																																																																																																																																												
DOUBLE	DBL	KNOCK DOWN	KD	REVISION	REV	WITHOUT	W/O																																																																																																																																																																																																																																																																																																																																																												

	<p>PROJECT TITLE: FACILITY BUILDING INTERIOR RENOVATION IQALUIT - NUNAVUT</p> <p>SHEET TITLE: PARTIAL MAIN FLOOR PLAN</p> <p>PROJECT NUMBER: 17-007-01-30</p>	<p>00 ISSUED FOR CONSTRUCTION 17 04 28 RS</p> <p>REV. # REVISION DATE (YY MM DD) REV. BY</p>	<p>REV. # REVISION DATE (YY MM DD) REV. BY</p>	<p>SCALE: AS NOTED</p> <p>DATE (YY MM DD): 17 04 28</p>	<p>DRAWING NUMBER: A0.0</p> <p>REVISION NUMBER: 00</p>
--	---	--	--	---	---



1 KEY PLAN
A1.0/A1.0 SCALE: NTS



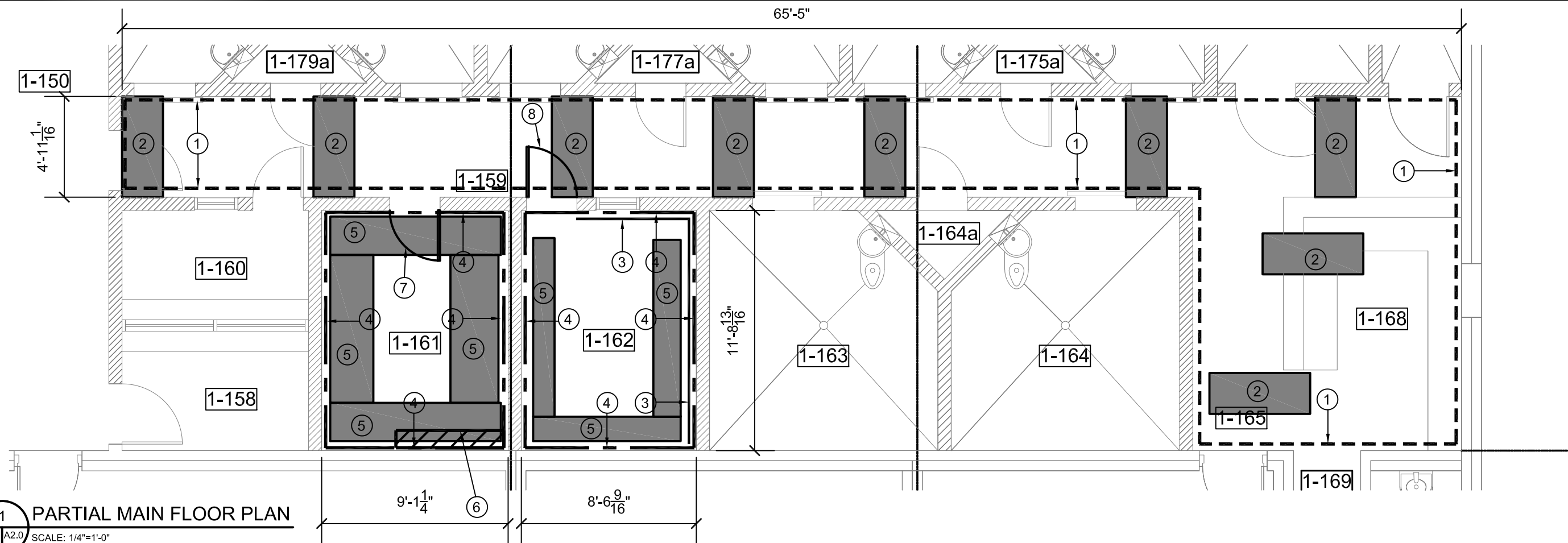
PROJECT TITLE:
FACILITY BUILDING INTERIOR RENOVATION IQALUIT - NUNAVUT
SOUND PROOFING AND FLOORING
SHEET TITLE:
KEY PLAN
PROJECT NUMBER:
17-007-01-30

00	ISSUED FOR CONSTRUCTION	17 04 28	RS
REV. #	REVISION	DATE (YY MM DD)	REV. BY

REV. #	REVISION	DATE (YY MM DD)	REV. BY
--------	----------	-----------------	---------

SCALE:
AS NOTED
DATE (YY MM DD):
17 04 28

DRAWING NUMBER:
A1.0
REVISION NUMBER:
00



1 PARTIAL MAIN FLOOR PLAN
 A2.0/A2.0 SCALE: 1/4"=1'-0"

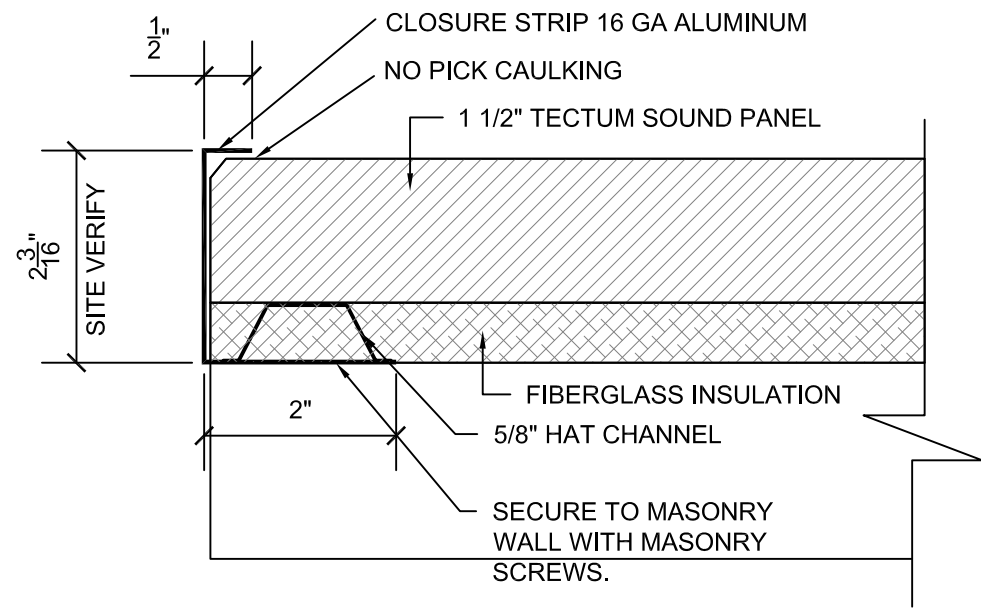
DRAWING NOTES: #

1. INSTALL NEW SOUND PROOFING FROM TOP OF WALL TO 16" BELOW. -
2. INSTALL NEW CEILING SOUND PROOFING IN LOCATIONS SHOWN. 24" WIDE BY WIDTH OF HALLWAY. ADJUST WIDTH AND LOCATION AS REQUIRED DUE TO SITE CONDITIONS . INSTALL HORIZONTAL 5/8" FURRING CHANNELS UNDER ALL PANELS. ALONG WITH FIBERGLASS INSULATION AS PER MANUFACTURERS INSTALLATION INSTRUCTIONS.
3. REMOVE EXISTING SOUND PROOFING AND READY WALL FOR INSTALLATION OF NEW PANELS
4. INSTALL NEW SOUND PANELS IN 24" WIDE VERTICALLY ALL AROUND ROOM 8" FROM TOP OF WALL TO TOP OF FIRST MASONRY BLOCK AT BASE. CUT AROUND ALL OUTLETS AND WALL MOUNTED EQUIPMENT.
5. INSTALL NEW SOUND PANELS ON CEILING ADJUST SIZES TO MATCH AVAILABLE CEILING SPACE. NEW PANELS ARE TO BE POSITIONED AS TO NOT INTERFERE WITH CEILING MOUNTED CAMERAS.
6. ELECTRICAL PANEL AND CONDUITS ARE LOCATED ON THIS WALL. (SEE PHOTOS IN SPECIFICATIONS)

7. INSTALL WEATHER PROOFING AND NEW DOOR SWEEP ON EXISTING DOOR .
8. REMOVE EXISTING SOUND DOOR AND INSTALL NEW STC 55 SOUND DOOR IN EXISTING FRAME.

GENERAL NOTES:

1. PANELS ARE TO BE RE-PAINTED IN AREAS THAT ARE CUT TO MATCH EXISTING.
2. OUTLETS, WINDOWS AND OTHER PROTRUSIONS INTO THE ROOM ARE TO HAVE THE PANELS CUT TO FIT AROUND.



2 TYPICAL PANEL EDGE DETAIL
 A2.0/A2.0 SCALE: 3"=1'-0"



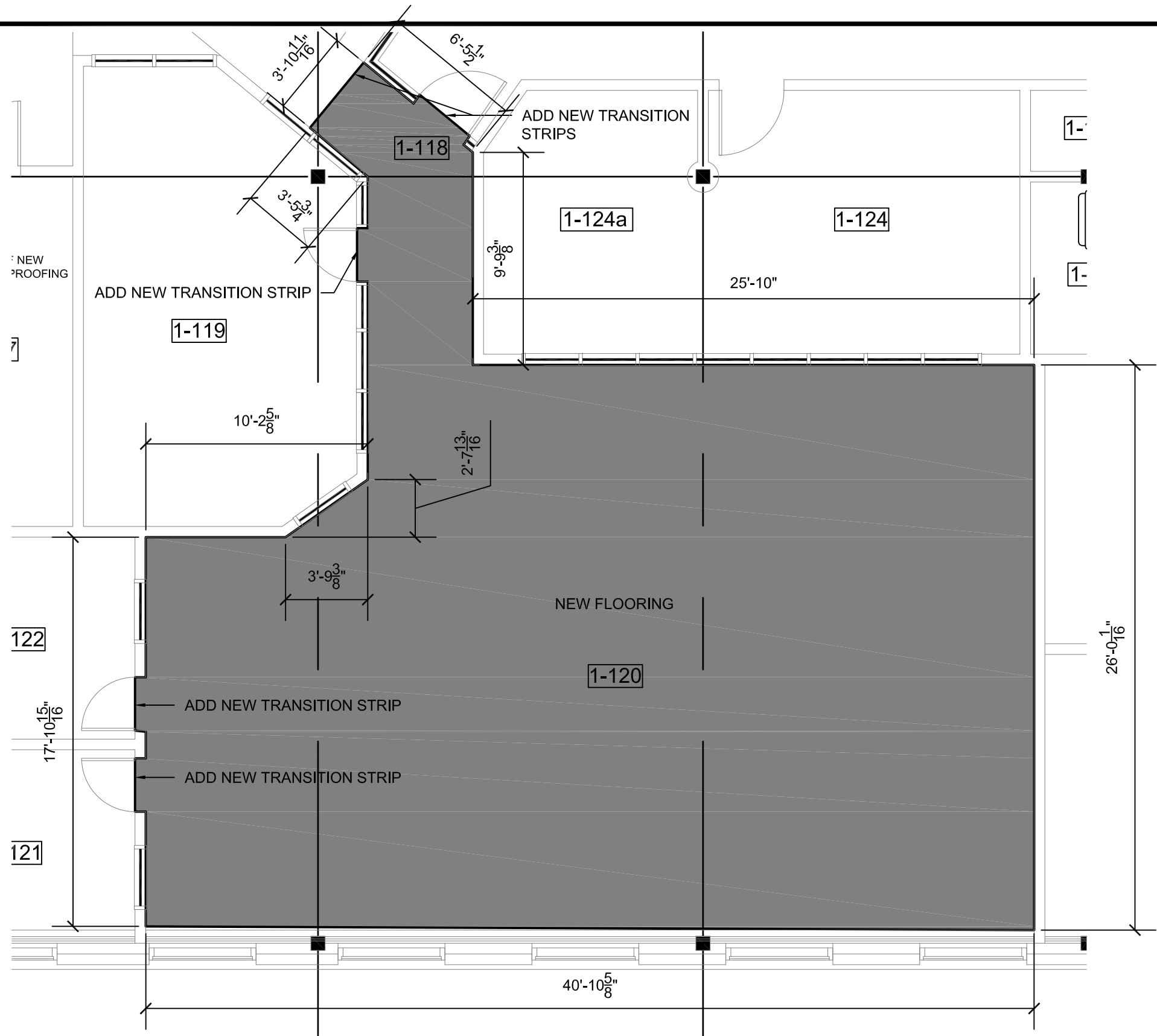
PROJECT TITLE:
FACILITY BUILDING INTERIOR RENOVATION IQALUIT - NUNAVUT
SOUND PROOFING AND FLOORING
 SHEET TITLE:
PARTIAL MAIN FLOOR PLAN
 PROJECT NUMBER:
17-007-01-30

00	ISSUED FOR CONSTRUCTION	17 04 28	RS
REV. #	REVISION	DATE (YY MM DD)	REV. BY

REV. #	REVISION	DATE (YY MM DD)	REV. BY
--------	----------	-----------------	---------

SCALE:
AS NOTED
 DATE (YY MM DD):
17 04 28

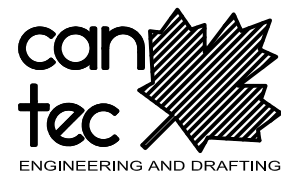
DRAWING NUMBER:
A2.0
 REVISION NUMBER:
00



FLOORING REPAIR NOTES:

1. REMOVE ALL EXISTING FLOORING, GLUE AND DAMAGED FLOOR CONCRETE.
2. INSTALL NEW 1/2" GIS PLYWOOD SUB-FLOOR ALONG WITH PLANTON OR EQUAL UNDERLAY.
3. INSTALL NEW RUBBER FLOORING TO AREA SHOWN
4. SUPPLY AND INSTALL NEW RUBBER BASE SIZE AND COLOR TO MATCH EXISTING
5. CONTRACTOR TO DISASSEMBLE AND MOVE ALL FURNITURE/FIXTURES OUT OF SPACE AND THEN RE-INSTALL ALL FURNITURE/FIXTURES IN ONCE WORK IS COMPLETE. TEMPORARY LOCATION OF FURNITURE/FIXTURES IS TO BE ON SITE.
6. FLOORING IS TO BE POLISHED AND SEALED AS PER MANUFACTURERS INSTRUCTIONS PRIOR TO RE-INSTALLATION OF FURNITURE.
7. EXTEND FLOOR OUTLETS/CLEANOUTS TO BE FLUSH WITH NEW FLOORING

1 PARTIAL MAIN FLOOR PLAN
A2.1 A2.1 SCALE: 3/16"=1'-0"



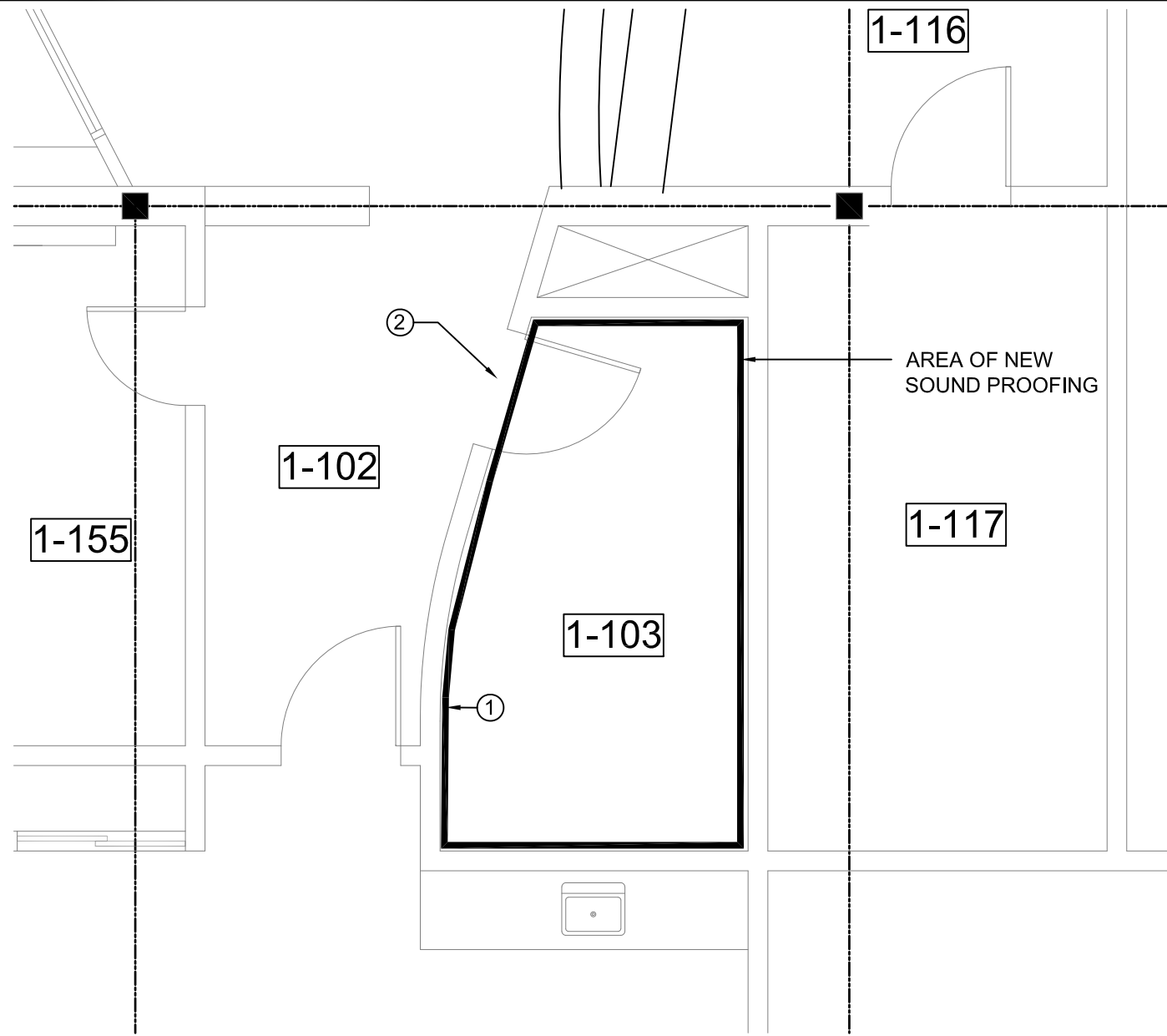
PROJECT TITLE:
FACILITY BUILDING INTERIOR RENOVATION IQALUIT - NUNAVUT
SOUND PROOFING AND FLOORING
SHEET TITLE:
PARTIAL MAIN FLOOR PLAN
PROJECT NUMBER:
17-007-01-30

00	ISSUED FOR CONSTRUCTION	17 04 28	RS
REV. #	REVISION	DATE (YY MM DD)	REV. BY

REV. #	REVISION	DATE (YY MM DD)	REV. BY

SCALE:
AS NOTED
DATE (YY MM DD):
17 04 28

DRAWING NUMBER:
A2.1
REVISION NUMBER:
00



1 PARTIAL MAIN FLOOR PLAN
 A2.2/A2.2 SCALE: 3/16"=1'-0"

DRAWING NOTES: (#)

1. INSTALL NEW SOUND PROOFING FROM TOP OF WALL TO 1" ABOVE WALL PLUGS. PROVIDE CUT OUTS FOR ALL OUTLETS, THERMOSTATS ETC. LOCATED ON THE WALLS. SITE VERIFY EXACT HEIGHT.
2. WINDOW ABOVE DOOR TO BE COVERED WITH OPAQUE FILM.

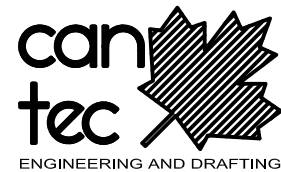
GENERAL NOTES:

1. ALL SOUND PANELS IN ROOM 1-103 ARE TO BE TYPE 2.

INSTALL OPAQUE FILM OVER ENTIRE GLASS SURFACE



2 WINDOW ABOVE SOUND DOOR
 A2.2/A2.2 SCALE:



PROJECT TITLE:
 FACILITY BUILDING INTERIOR RENOVATION IQALUIT - NUNAVUT
 SOUND PROOFING AND FLOORING
 SHEET TITLE:
 PARTIAL MAIN FLOOR PLAN
 PROJECT NUMBER:
 17-007-01-30

00	ISSUED FOR CONSTRUCTION	17 04 28	RS
REV. #	REVISION	DATE (YY MM DD)	REV. BY

REV. #	REVISION	DATE (YY MM DD)	REV. BY

SCALE:
 AS NOTED
 DATE (YY MM DD):
 17 04 28

DRAWING NUMBER:
A2.2
 REVISION NUMBER:
 00