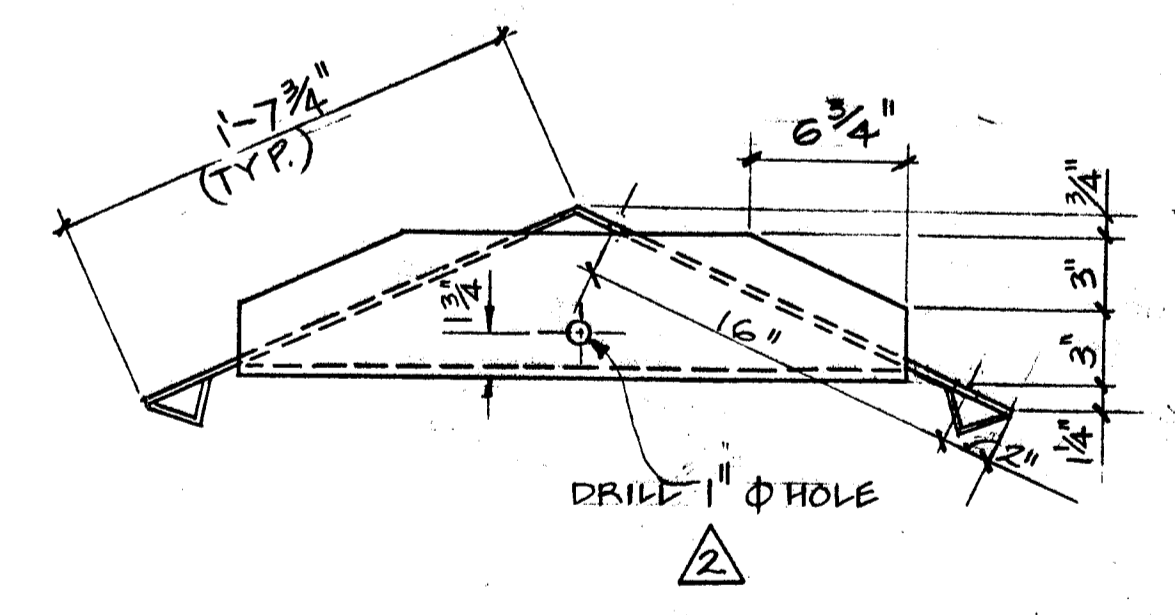
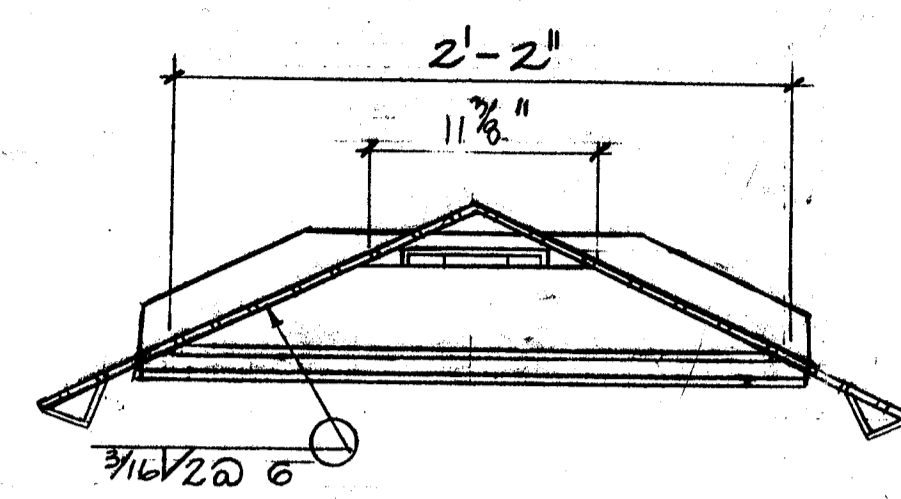


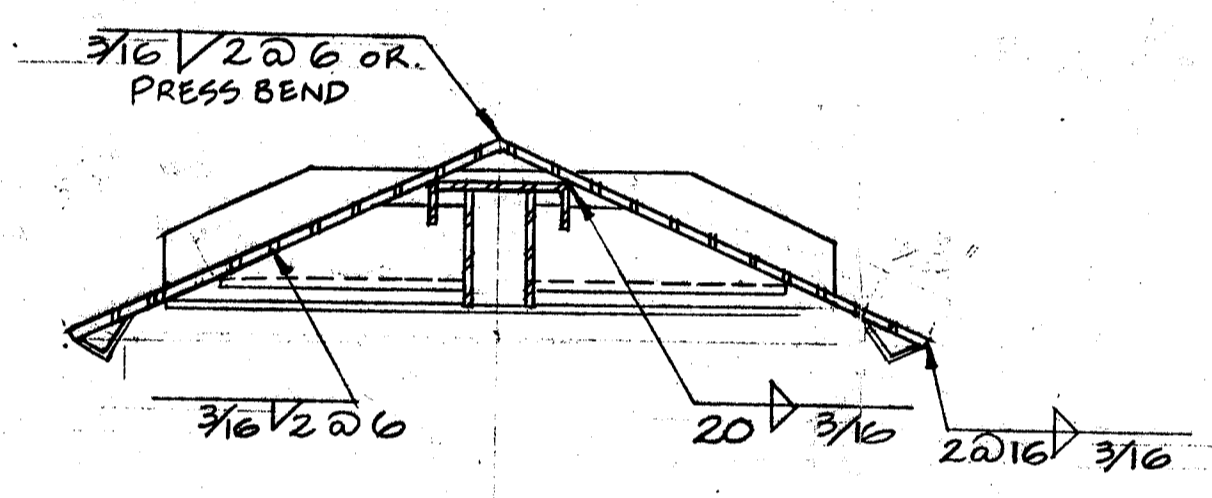
UNDERSIDE



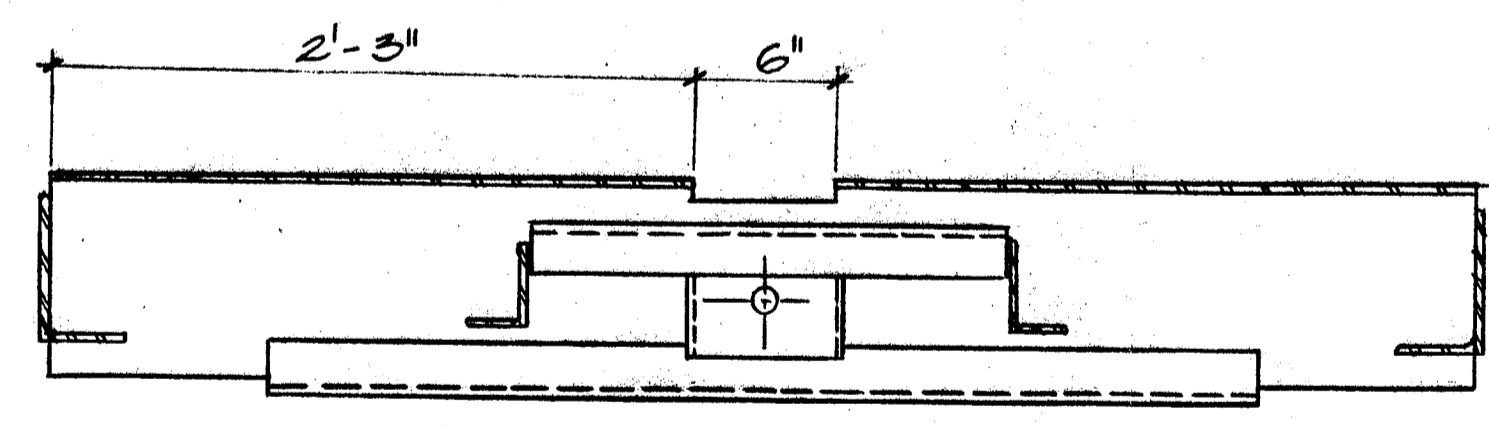
END



SECTION A-A

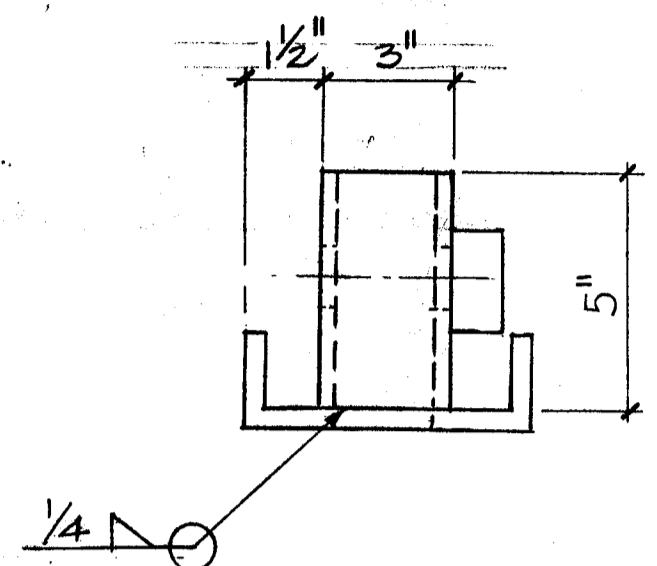


SECTION B-B

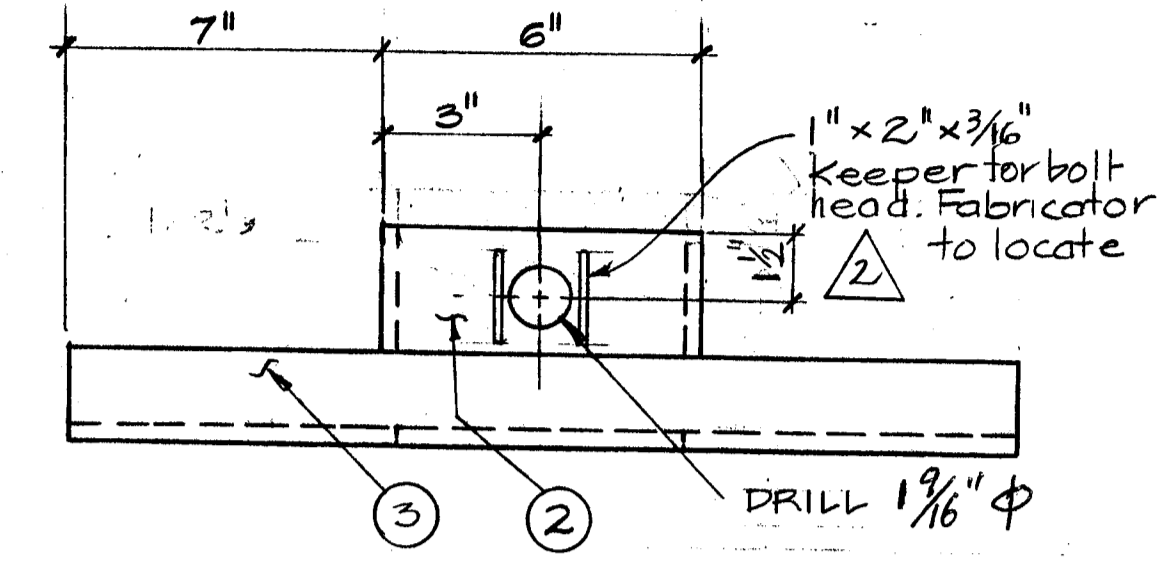


SECTION C-C

* NOTE
ALL SECTION CUTS
TAKEN THROUGH TOP
SIDE OF ANCHOR



DETAIL 1
SCALE: 1/4" SIZE



DETAIL 2
SCALE: 1/4" SIZE

NOTE: FABRICATOR SHALL SUPPLY ONE CROSBY G-400 HOT DIPPED GALVANIZED FORGED EYE NUT AND HEX NUT TO FIT THREADED END AND ONE 1/2" x 5" ASTM A193 B7 BOLT & HEX NUT (GALVANIZED) SEE NOTE 4

BILL OF MATERIALS		
ITEM	QUANTITY	DESCRIPTION
1	2	3 1/2" x 2 1/2" x 1/4" ANGLE 2'-2" LONG
2	1	6" x 5" x 3/8" RECTANGULAR TUBE SECTION SEE DETAIL 1
3	1	STANDARD C6x13 CHANNEL, 1'-8" LONG
4	2	2" x 2" x 1/4" ANGLE, 3'-6" LONG
5	2	3/16" PL, 1'-7 3/4" x 5'-0"
6	2	6" x 3 1/2" x 1/4" ANGLE, 2'-4" LONG
7	1	1 1/4" x 5" ROD SEE DETAIL 2
8	1	1 1/2" x 5" BOLT (SEE NOTE 4) & NUT

GENERAL NOTES

1. ALL PARTS TO BE GALVANIZED AFTER FABRICATION.
2. ANCHOR PLATE TO BE G40.21-44W STEEL, ANCHOR ROD TO BE CSA G40.21-44W OR EQUIVALENT.
3. ALL WELDS TO USE E70 XX ELECTRODES
4. USE ASTM A193 B7 BOLT CONNECTOR (1 1/2" x 5") FOR ROD TO PL.

Dwg. No.	Title	Dwg. No.	Title	No.	Remarks	By	Date	Chk'd.	App.	Drawing	Tracing	By	Date	Checked	Date	Approved	Date
				3	GENERAL NOTES NO. 2 CHANGED TO G40.21-44W 22 JAN 80												
				1	3/16" DIA HOLE WAS 3/8" DIA. 1 1/2" DIMENSION WAS 2 1/4". TWO 1" DIA HOLES ADDED	V.L.	JUNE 79			Survey							
				R1	ANGLES & PLATES REVISED	E.B.	AP '78			Design		B.M.	FEB '76				
										Drawing			FEB '76				
										Tracing		V.L.	MAR '78				

DEPT. OF THE ENVIRONMENT
WATER SURVEY OF CANADA, VANCOUVER, B.C.

STEEL ANCHOR PLATE
CABLEWAYS
FABRICATION DETAILS

Scale 1/2" = 1'-0" EXCEPT AS NOTED.

Sheet 1 of 1

Station No.

Dwg. No. 2812-R3