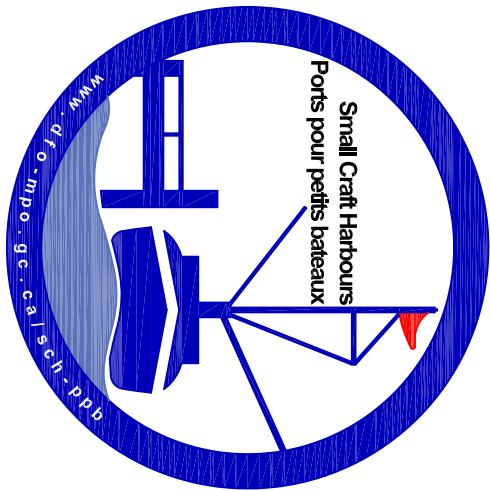
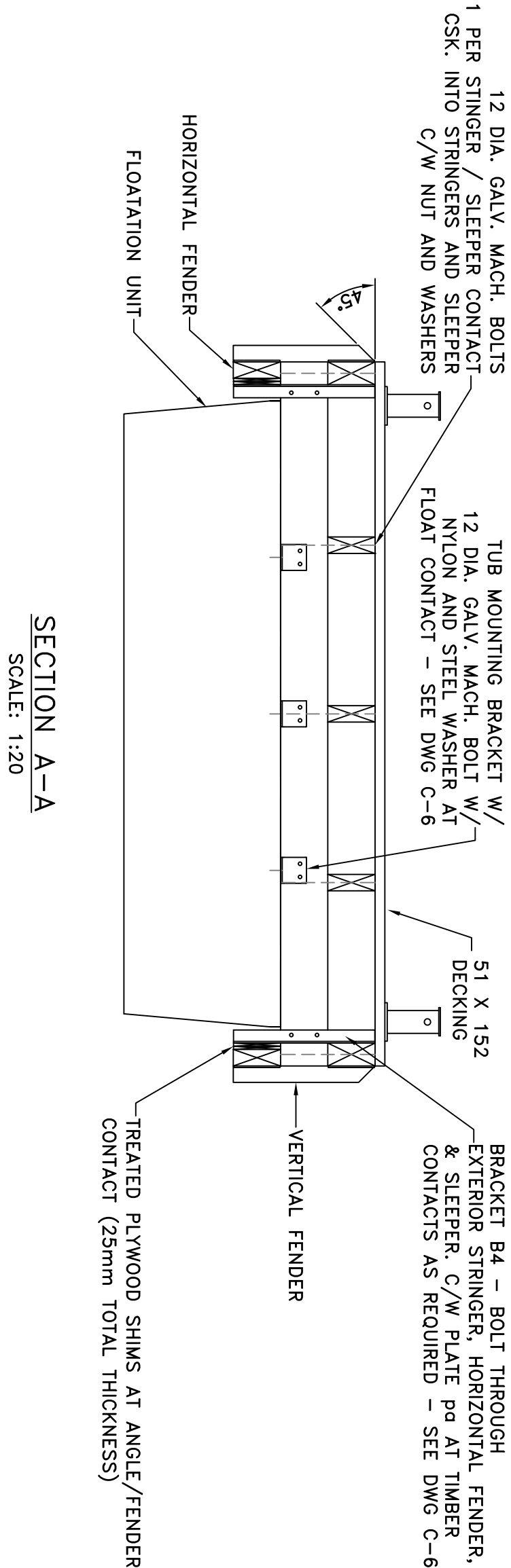


SMALL CRAFT HARBOURS
CENTRAL AND ARCTIC REGION

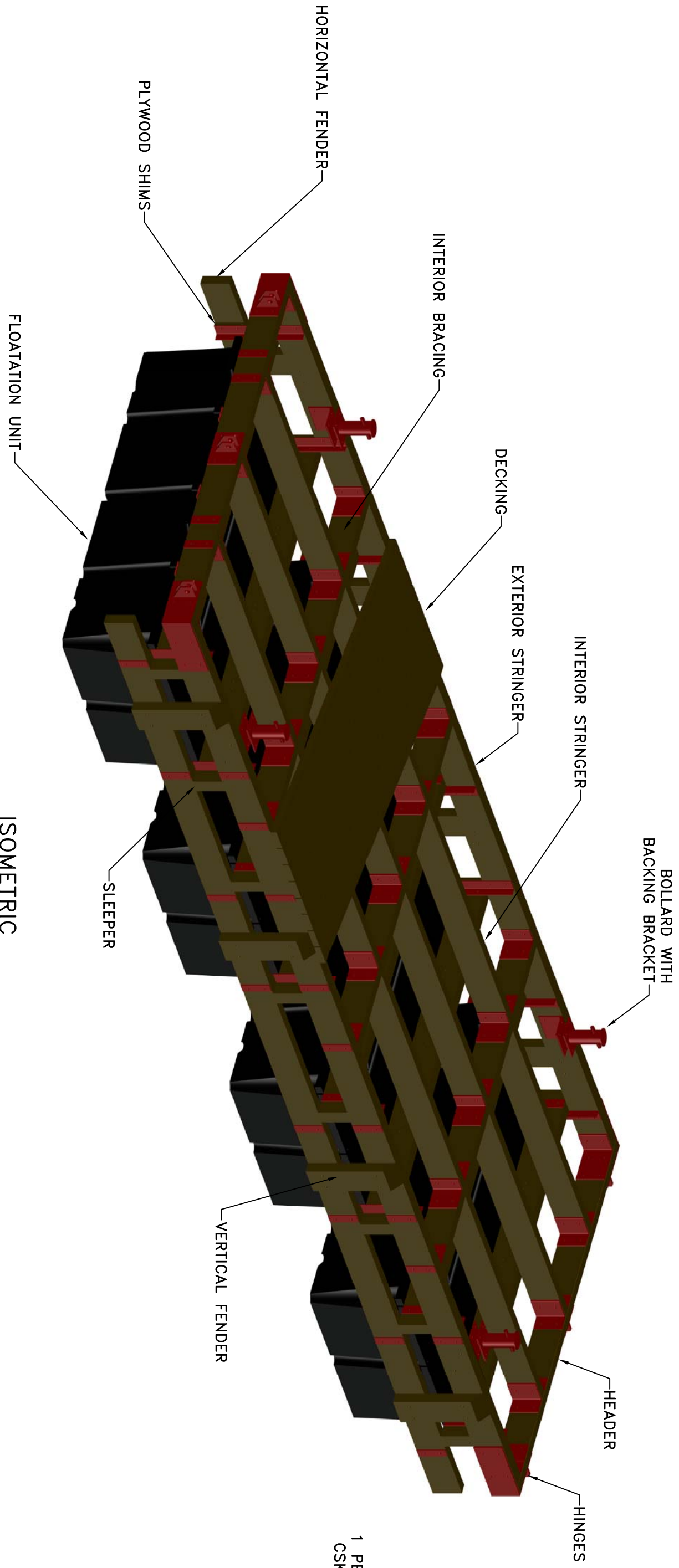


- NOTES:
- DIMENSIONS ARE IN MILLIMETRES UNLESS OTHERWISE STATED
 - CONTRACTOR TO SHOP PAINT ALL STEEL HARDWARE WITH 2 COATS OF RED RUST INHIBITOR PAINT

SECTION A-A
SCALE: 1:20



ISOMETRIC
SCALE: 1:25

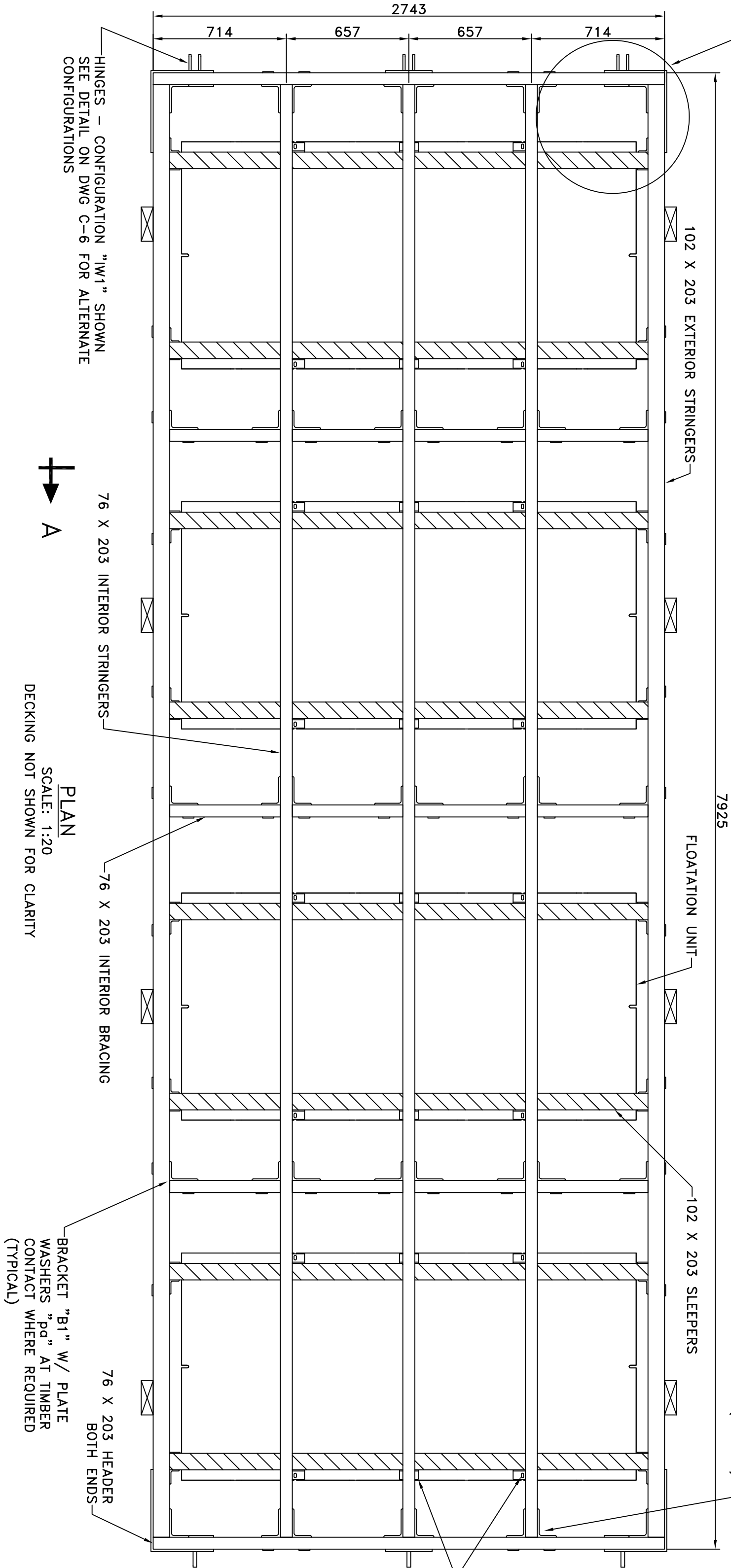


BRACKET "B1" W/ PLATE-
WASHERS "PO" AT TIMBER
CONTACT WHERE REQUIRED
(TYPICAL)

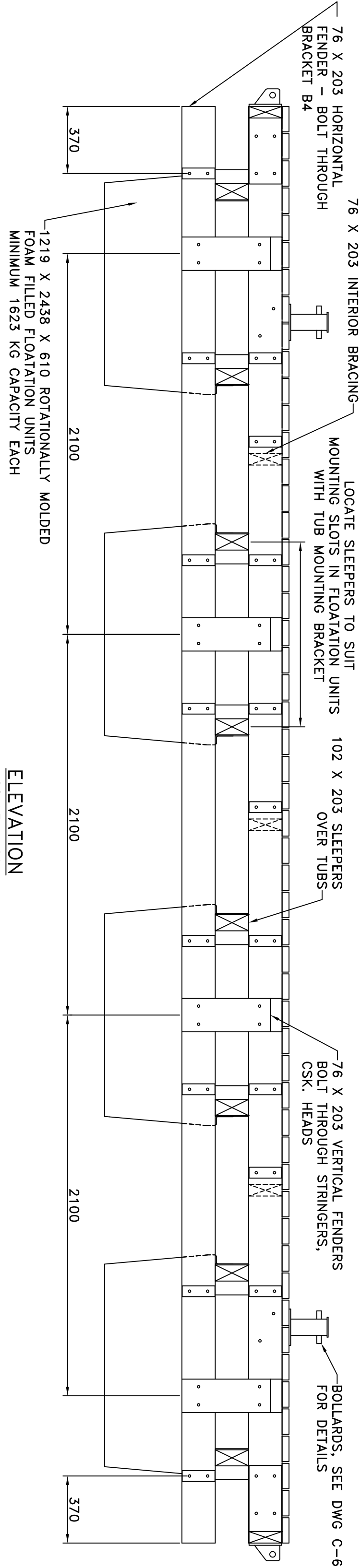
→ A

SEE DETAIL
ON DWG C-6

TUB MOUNTING BRACKETS
- SEE DWG C-6



ELEVATION
SCALE: 1:20



REVISIONS:		DATE:
0	ISSUED FOR TENDER	NOV. 9, 2017
SCALE:	AS SHOWN	CLASS:
PROJECT:		
HARBOUR REVITALIZATION		
DESCRIPTION:		
CONSTRUCTION DETAILS - 2.7m x 7.9m FLOAT WHARF		
DRAWN:	S.K	APPROVED:
DATE:	AUG. 2016	DATE:
LOCATION:		
WHITEFISH POINT MANITOBA		
DRAWING NO.:	C-5 of 6	LOCATOR CODE:
		5563