

Documents prepared by Tek Consultants Limited as instruments of service shall remain the property of the design professional.  
This design document is prepared solely for use by the party with whom Tek Consultants Limited has entered into an agreement and there are no representations of any kind made by the design professional to any party with whom the design professional has not entered into an agreement.

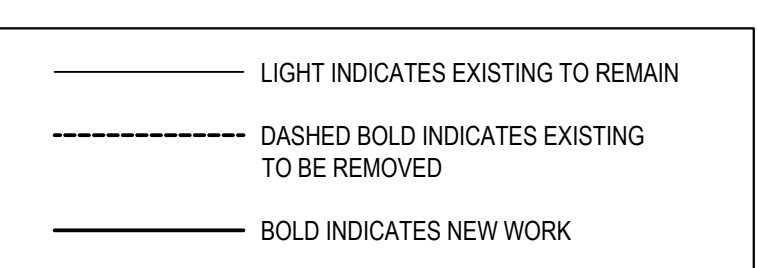
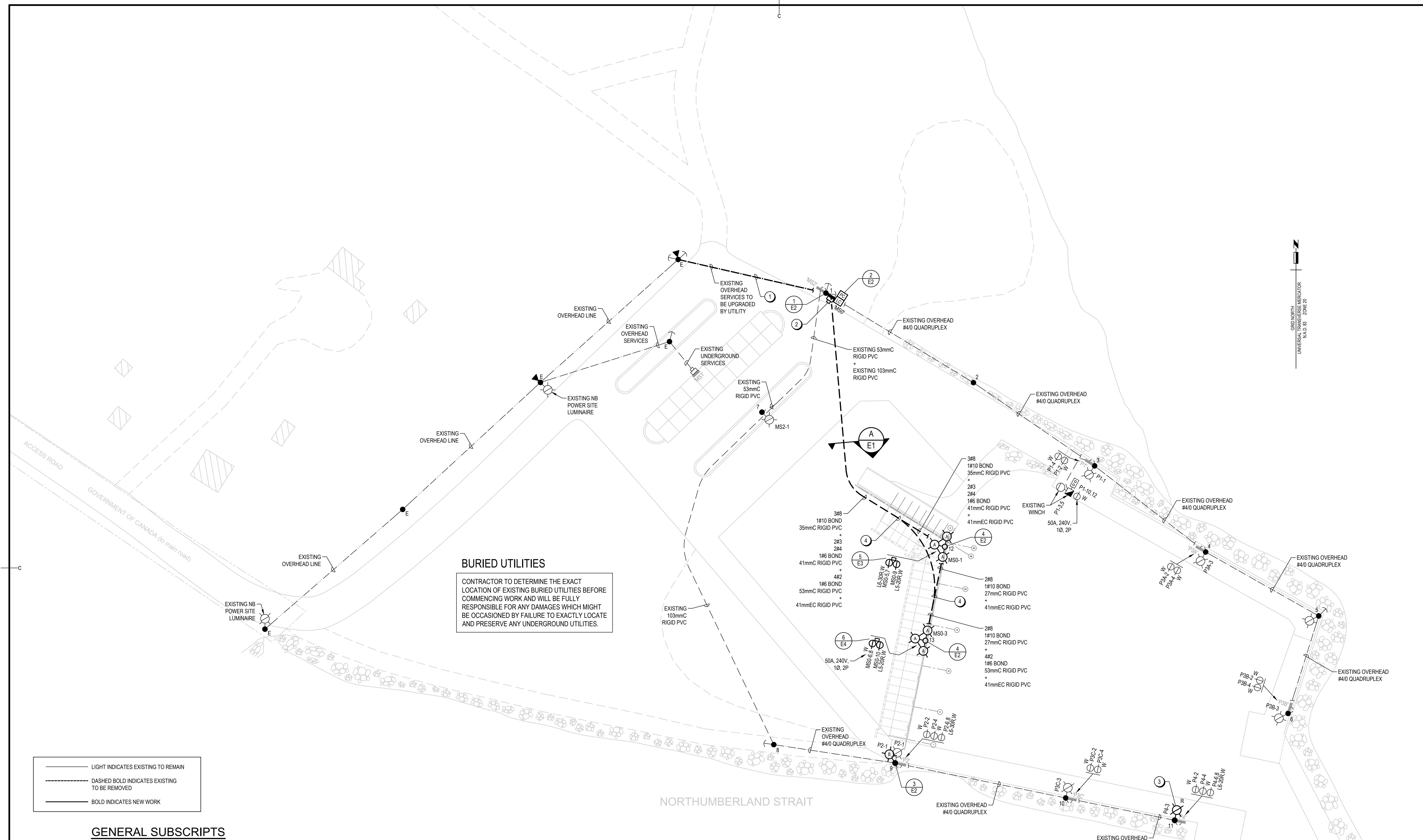


**GENERAL NOTES:**

- SITE IS TO REMAIN OPERATIONAL FOR FISHERMEN DURING RENOVATION. INSTALL NEW WORK WHILE MAINTAINING EXISTING ELECTRICAL. ONCE FISHING SEASON IS FINISHED, ENERGIZE NEW SERVICE AND REMOVE EXISTING ELECTRICAL MADE OBSOLETE INCLUDING CONDUIT AND WIRING.
- COORDINATE WITH NB POWER FOR UPGRADE OF NEW OVERHEAD SERVICE.
- COORDINATE WITH NB POWER FOR REMOVAL OF EXISTING SERVICE AND METER AND INSTALLATION OF NEW SERVICE AND METER.
- RELOCATE EXISTING SITE LUMINAIRE 90° AS INDICATED.
- INSTALL CONDUITS UNDER MARGINAL WHARF DECK. REFER TO TYPICAL MARGINAL WHARF CONDUIT DETAIL ON THIS DRAWING FOR ADDITIONAL INFORMATION.

**NOTES**

- COORDINATE WITH NB POWER FOR UPGRADE OF NEW OVERHEAD SERVICE.
- COORDINATE WITH NB POWER FOR REMOVAL OF EXISTING SERVICE AND METER AND INSTALLATION OF NEW SERVICE AND METER.
- RELOCATE EXISTING SITE LUMINAIRE 90° AS INDICATED.
- INSTALL CONDUITS UNDER MARGINAL WHARF DECK. REFER TO TYPICAL MARGINAL WHARF CONDUIT DETAIL ON THIS DRAWING FOR ADDITIONAL INFORMATION.



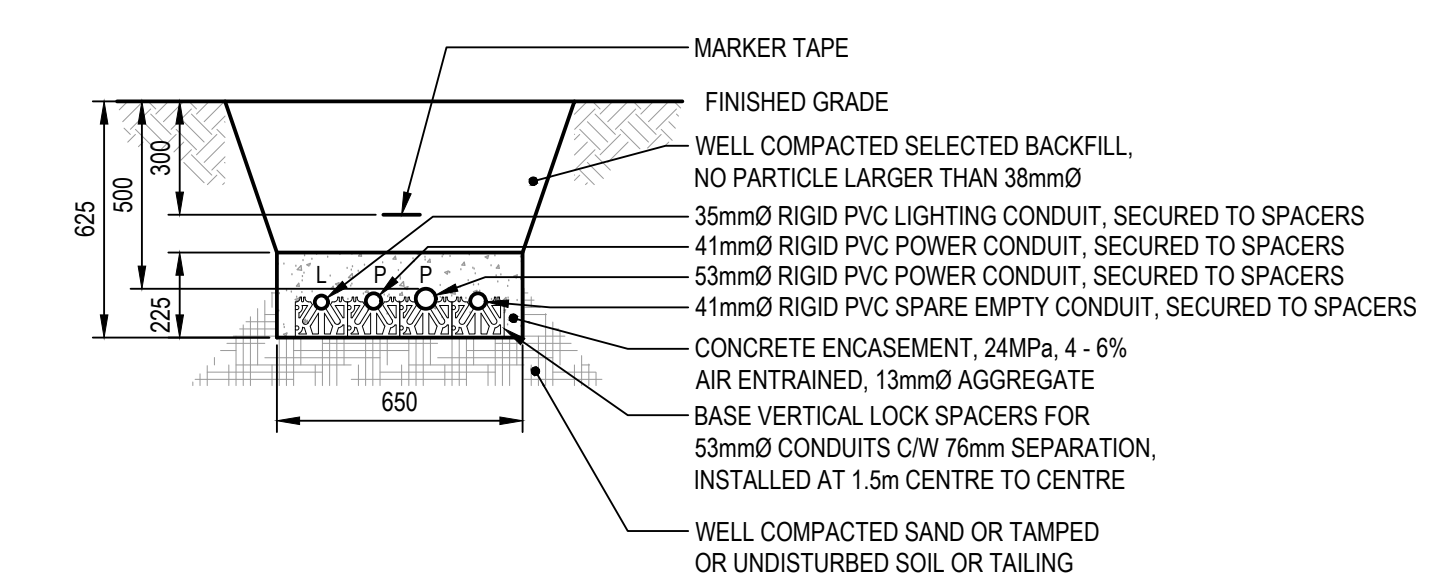
**GENERAL SUBSCRIPTS**

- E - INDICATES EXISTING TO REMAIN
- R - INDICATES RELOCATE EXISTING EQUIPMENT
- W - INDICATES WEATHERPROOF
- X - INDICATES EXISTING TO BE REMOVED

**LEGEND**

- CONDUIT AND WIRING UNDERGROUND: 21 - INDICATES CONDUIT SIZE, EC - INDICATES EMPTY CONDUIT C/W PULL ROPE
- CONDUIT AND WIRING RUN SURFACE
- AERIAL WIRING
- WOOD POLE: 1 - INDICATES POLE NUMBER
- POLE MOUNTED TRANSFORMER
- GUY WIRE
- ELECTRICAL PANEL SURFACE MOUNTED: MSO - INDICATES PANEL DESIGNATION
- MSO-1 INDICATES CIRCUIT 1 IN PANEL 'MSO'
- 2#10 TWO CONDUCTORS NUMBER 10 AWG WIRING
- UTILITY METER
- SINGLE PHASE MOTOR
- MANUAL MOTOR STARTER
- PUSHBUTTON STATION
- SINGLE RECEPTACLE: L5-20R - INDICATES SINGLE CSA TYPE L5-20R RECEPTACLE (TWISTLOCK), L6-20R - INDICATES SINGLE CSA TYPE L6-20R RECEPTACLE (TWISTLOCK), L6-30R - INDICATES SINGLE CSA TYPE L6-30R RECEPTACLE (TWISTLOCK)
- SITE LIGHTING LUMINAIRES ON DOUBLE OR TRIPLE DAVIT ARMS ON ALUMINUM POLE, CONCRETE BASE MOUNTED: A - INDICATES TYPE IN LUMINAIRE SCHEDULE, 12 - INDICATES POLE NUMBER
- EXISTING SITE LIGHTING LUMINAIRE ON EXISTING WOOD POLE
- LIGHTING CONTACTOR
- PHOTO-ELECTRIC CONTROLLER

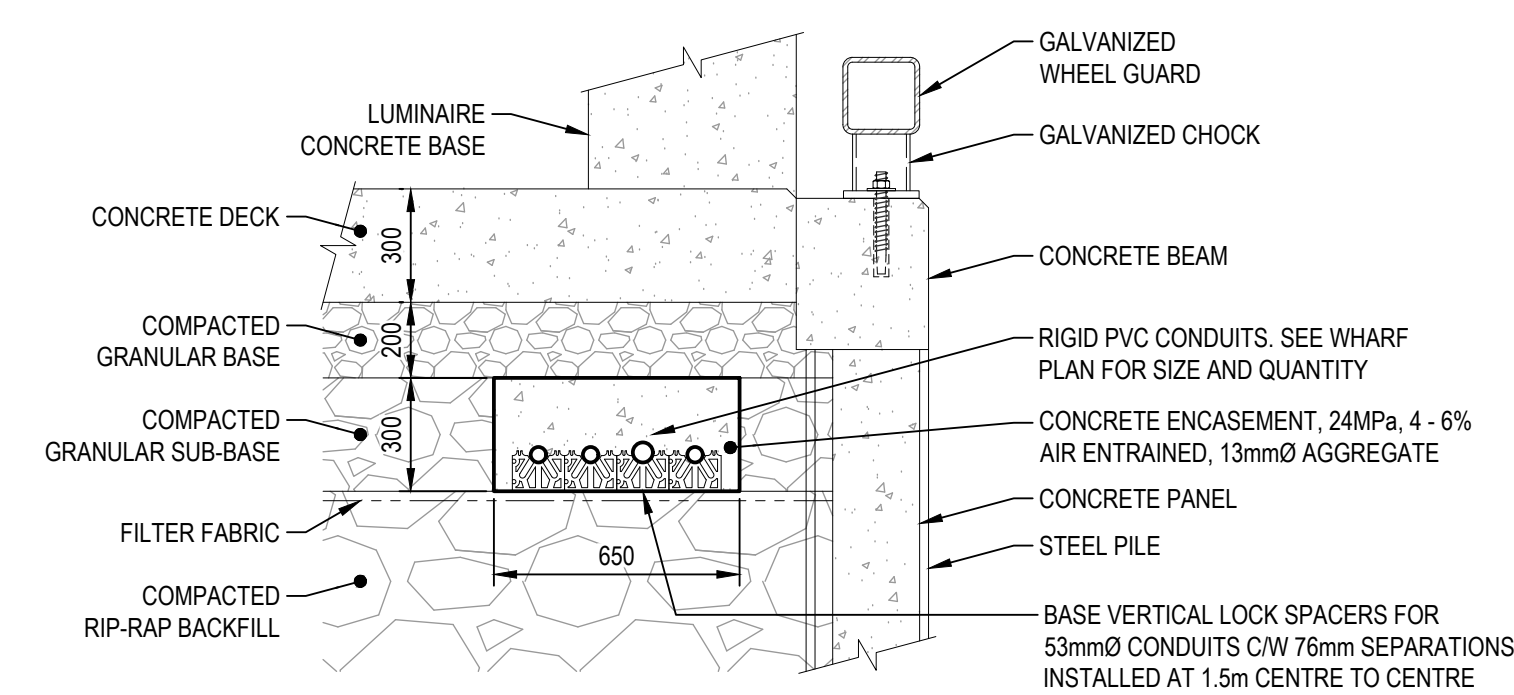
**BURIED UTILITIES**  
CONTRACTOR TO DETERMINE THE EXACT LOCATION OF EXISTING BURIED UTILITIES BEFORE COMMENCING WORK AND WILL BE FULLY RESPONSIBLE FOR ANY DAMAGES WHICH MIGHT BE OCCASIONED BY FAILURE TO EXACTLY LOCATE AND PRESERVE ANY UNDERGROUND UTILITIES.



**A TRENCH DETAIL**  
SCALE: 1:20

**WHARF PLAN - ELECTRICAL**

SCALE: 1:500



**TYPICAL MARGINAL WHARF CONDUIT DETAIL**  
SCALE: 1:20

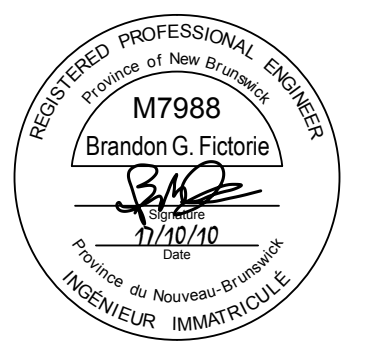
0	ISSUED FOR TENDER	OCT.10 2017
revisions		date

project	<b>NEW MARGINAL WHARF AND RAMP CAP-DES-CAISSIE WHARF</b>	project
client	KENT CO., NB	

**WHARF PLAN ELECTRICAL**

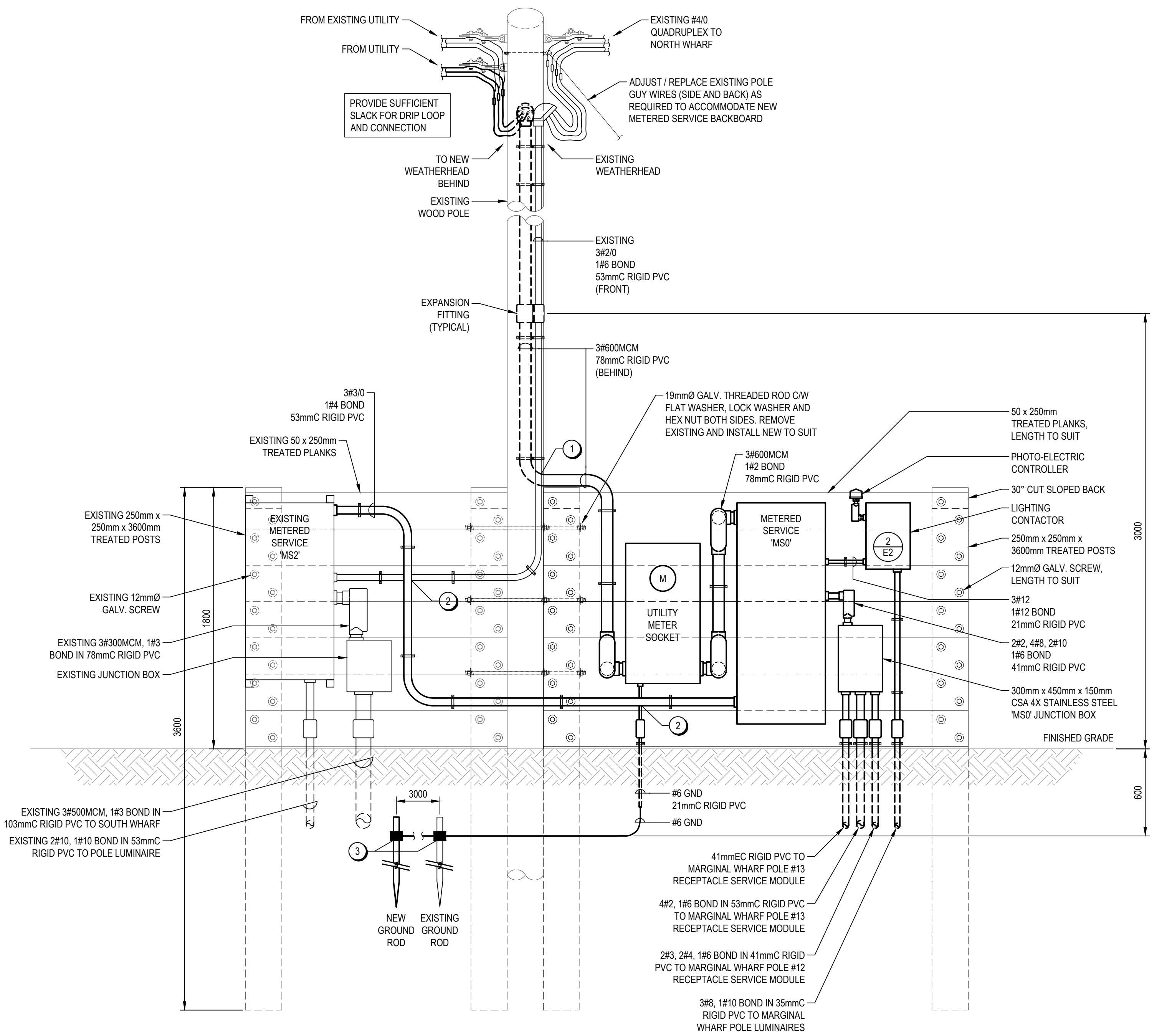
designed	BGF	conçu
date	OCTOBER 2017	
drawn	DD	dessiné
date	OCTOBER 2017	
approved	BGF	approuvé
date	OCTOBER 2017	
Tender		Soumission
Project Manager	<i>W. L. L.</i>	Administrateur de projet
project number	722234	no. du projet
drawing no.	E1 OF 6	no. du dessin

Documents prepared by Tek Consultants Limited as instruments of service shall remain the property of the design professional.  
This design document is prepared solely for use by the party with whom Tek Consultants Limited has entered into an agreement and there are no representations of any kind made by the design professional to any party with whom the design professional has not entered into an agreement.

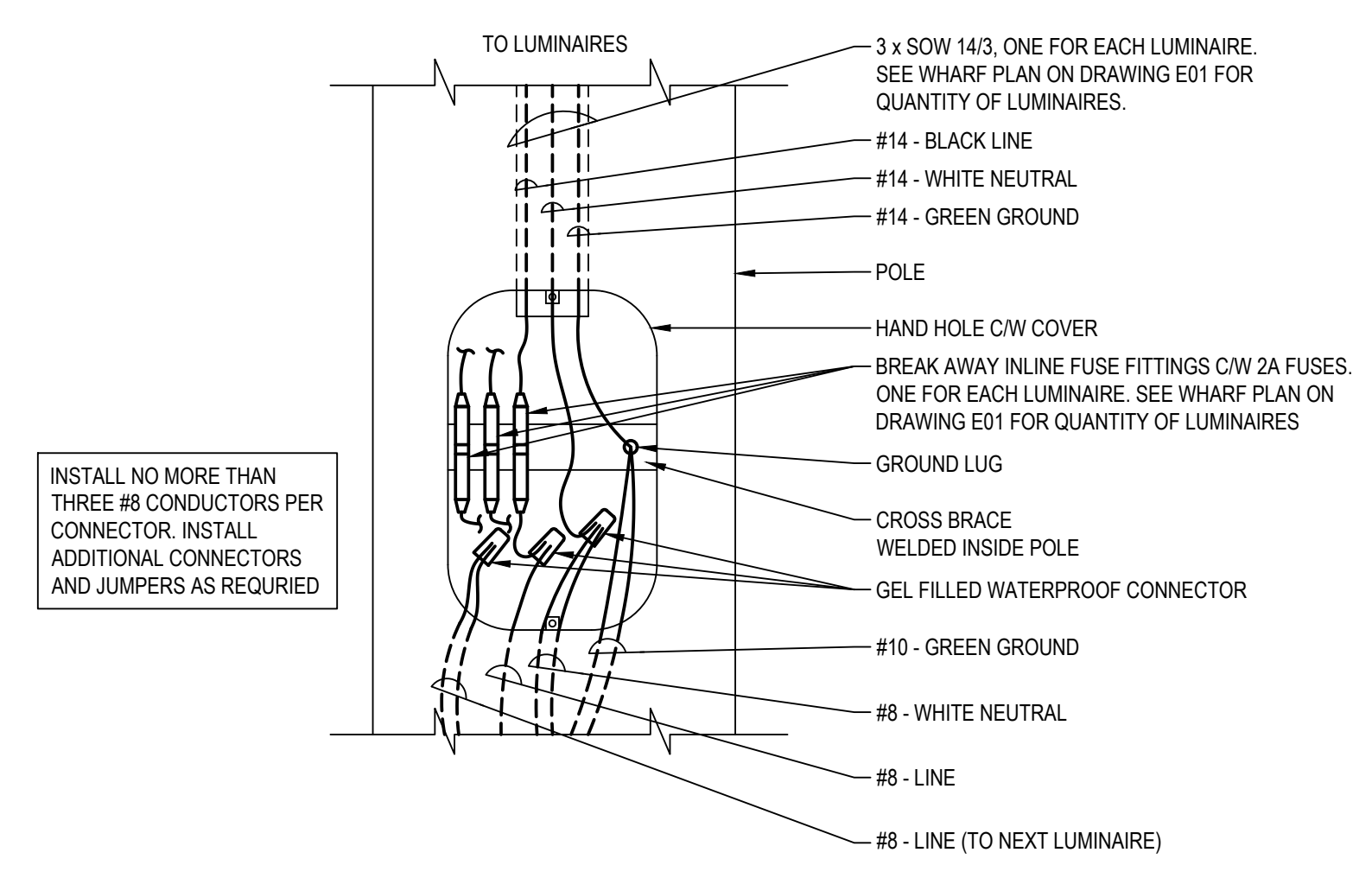


**NOTES**

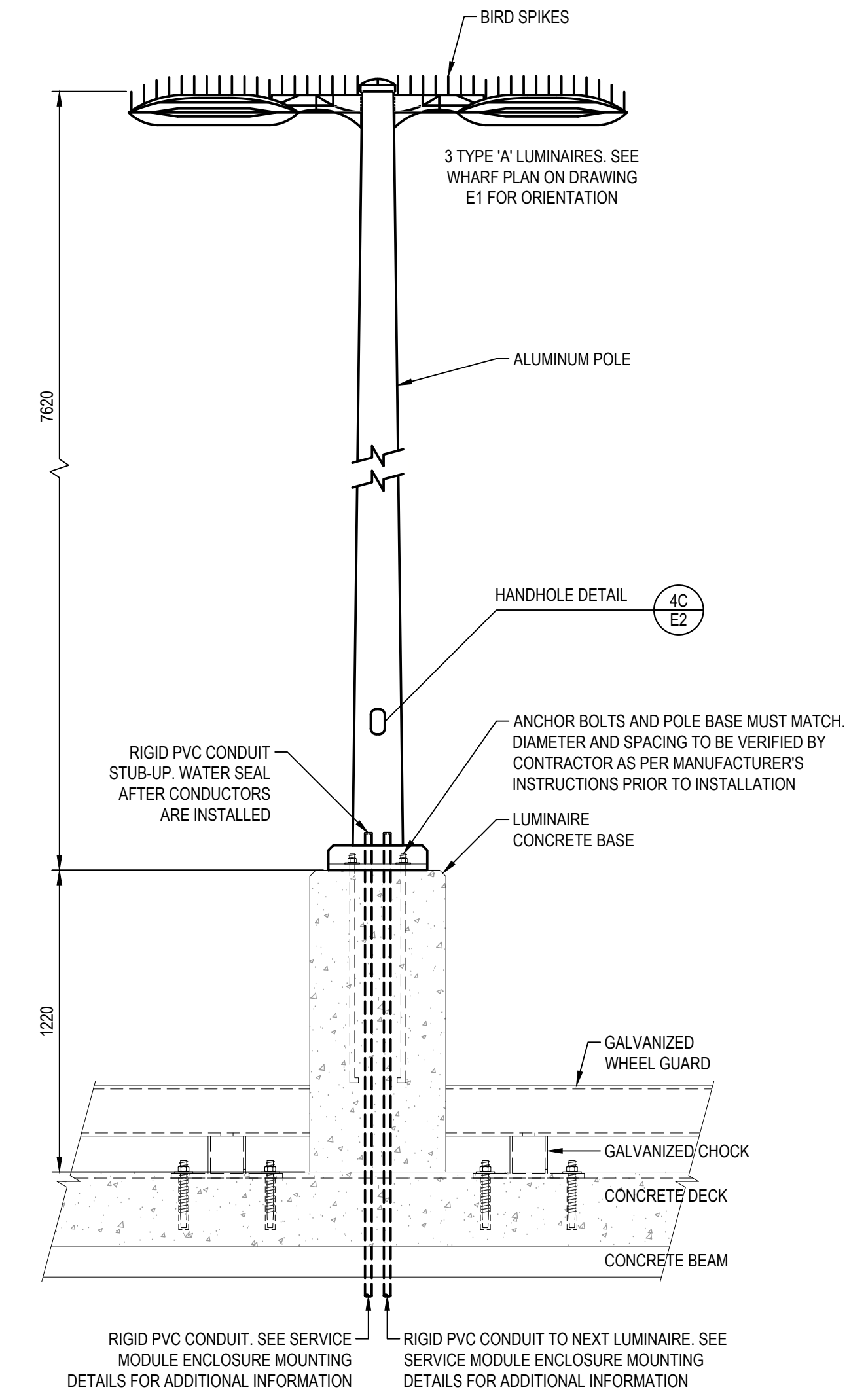
- RELOCATE EXISTING CONDUIT AS REQUIRED.
- PROVIDE OFFSET AS REQUIRED SO THAT CONDUITS ARE NOT TOUCHING.
- CONNECT GROUND WIRE TO EXISTING AND NEW GROUND RODS USING COMPRESSION CONNECTIONS. NEW COPPERWELD GROUND ROD TO BE 19mmØ x 3m, DRIVEN 600mm BELOW GRADE, 3m AWAY FROM EXISTING. COORDINATE EXACT LOCATIONS ON SITE.



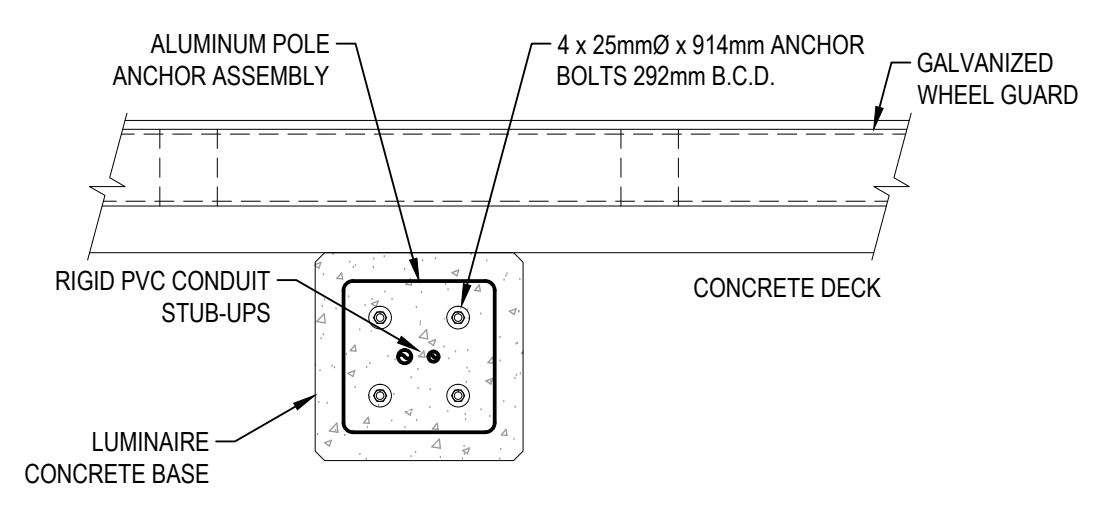
**1 METERED SERVICE 'MS0' AND 'MS2' DETAIL**  
SCALE: 1:20



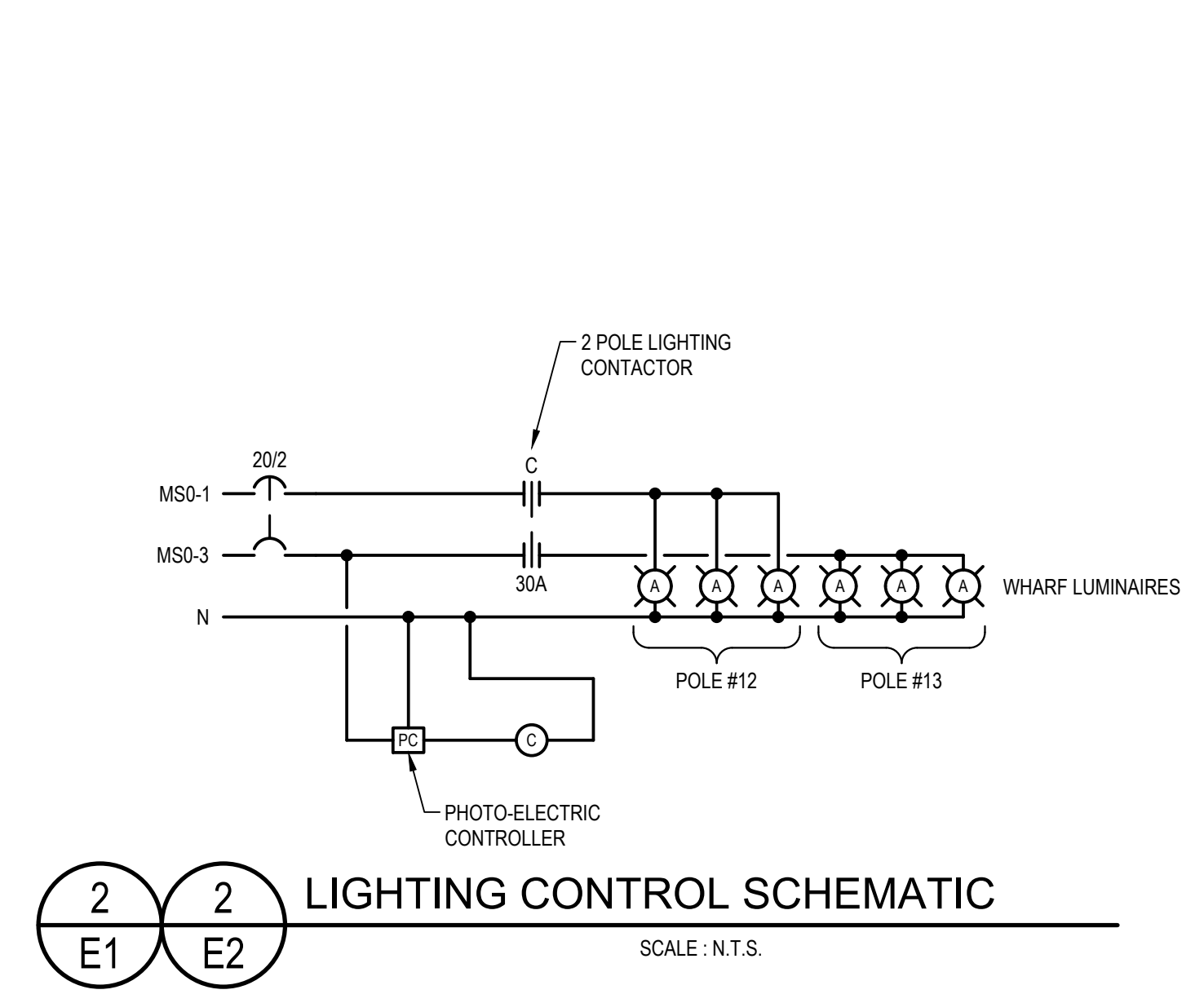
**4C HANDHOLE DETAIL**  
SCALE: N.T.S.



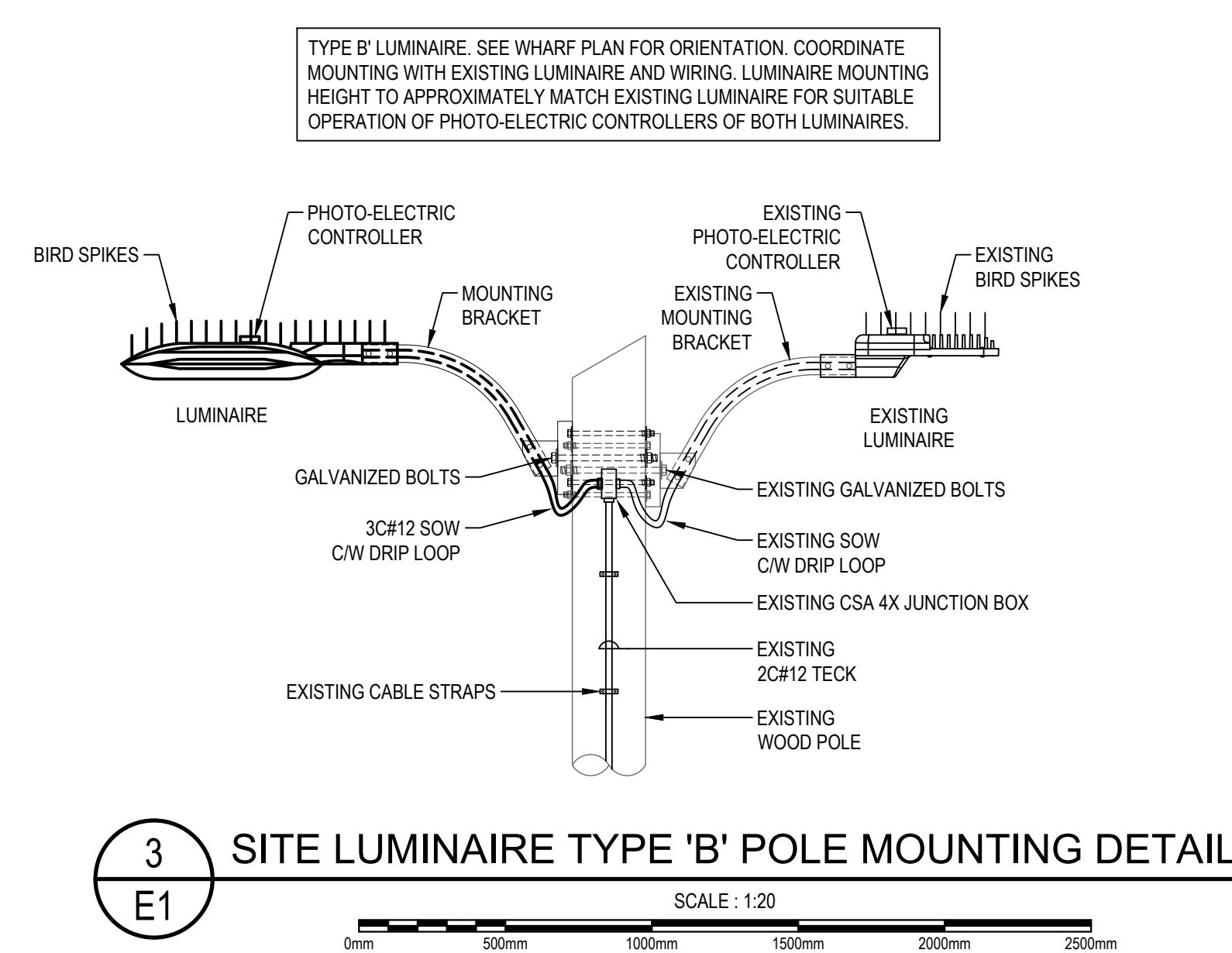
**4A SECTION**  
SCALE: 1:20



**4B PLAN VIEW**  
SCALE: 1:20



**2 LIGHTING CONTROL SCHEMATIC**  
SCALE: N.T.S.



**3 SITE LUMINAIRE TYPE 'B' POLE MOUNTING DETAIL**  
SCALE: 1:20

**4 LUMINAIRE TYPE 'A' POLE MOUNTING DETAIL**  
SCALE: 1:20

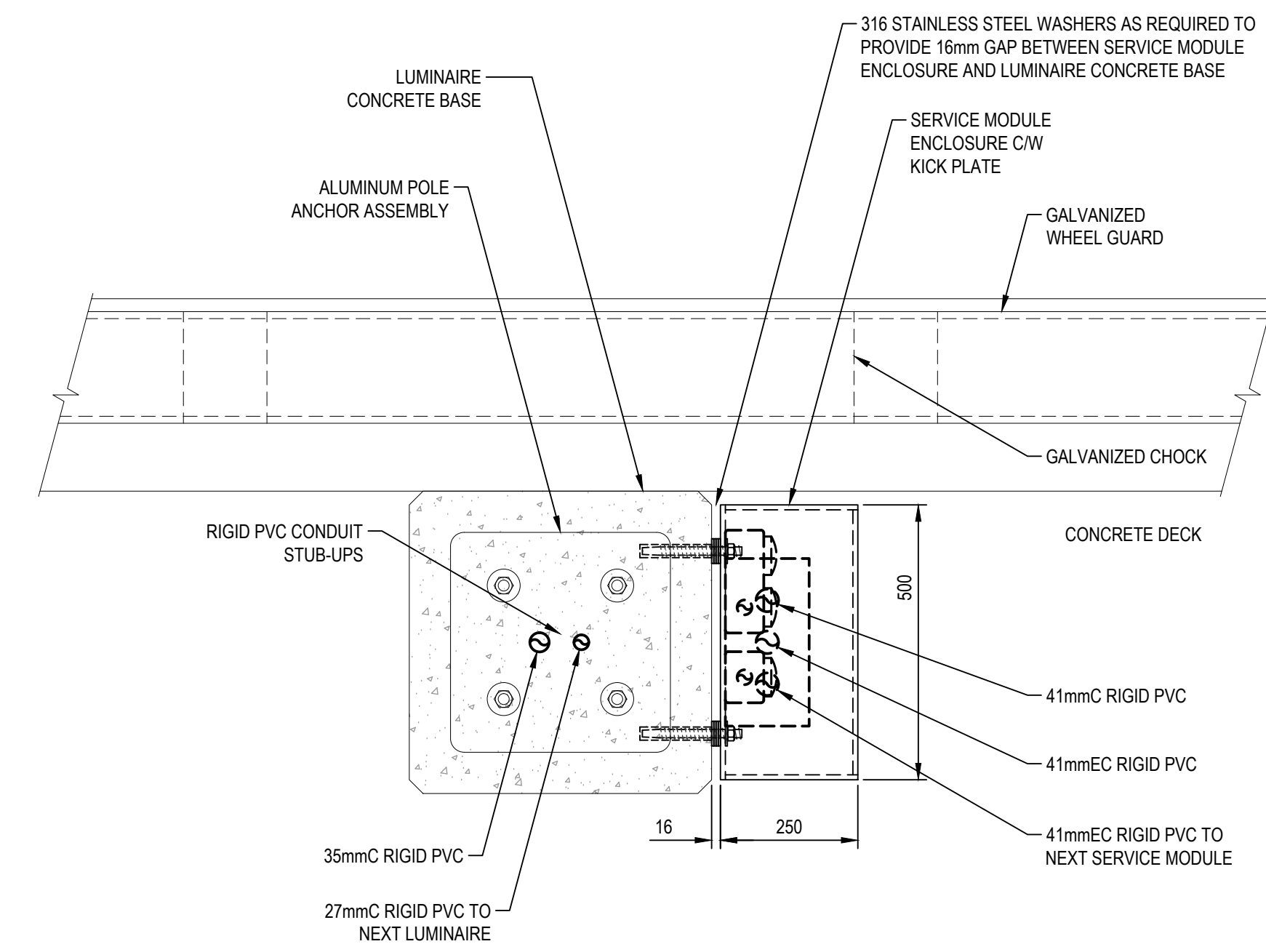
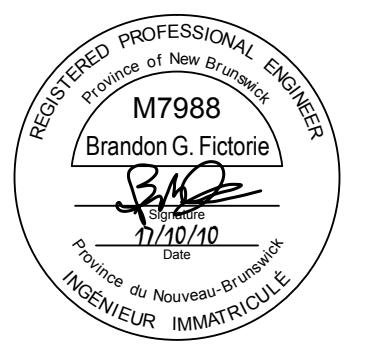
0	ISSUED FOR TENDER	OCT. 10 2017
revisions		date

project  
**NEW MARGINAL WHARF AND RAMP**  
**CAP-DES-CAISSIE WHARF**  
KENT CO., NB

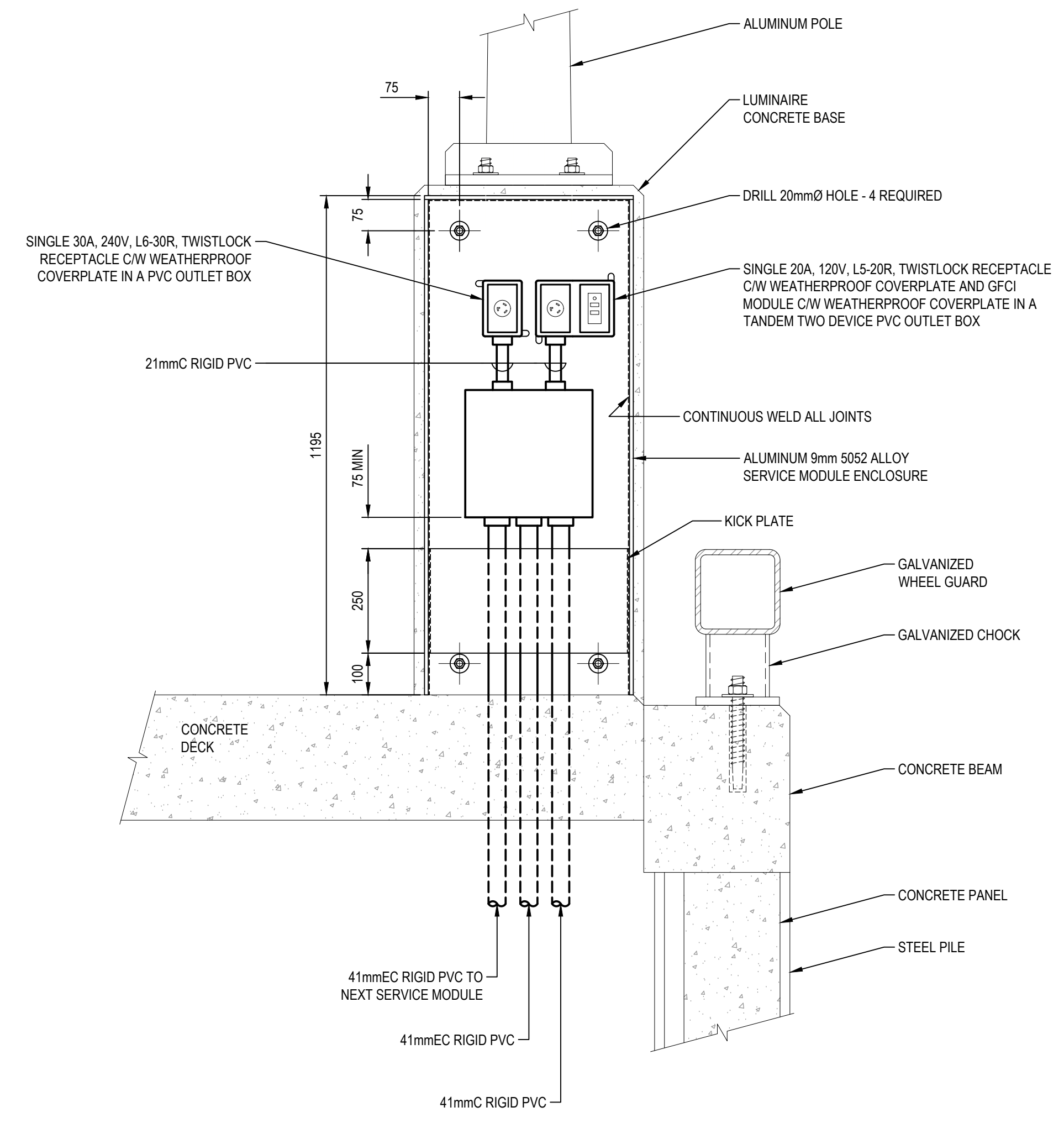
drawing  
**ELECTRICAL DETAILS**  
designé

designé	BGF	conçu
date	OCTOBER 2017	
drawn	DD	dessiné
date	OCTOBER 2017	
approved	BGF	approuvé
date	OCTOBER 2017	
Tender		Soumission
Project Manager	<i>W. L. L.</i>	Administrateur de projets
project number	722234	no. du projet
drawing no.	E2 OF 6	no. du dessin

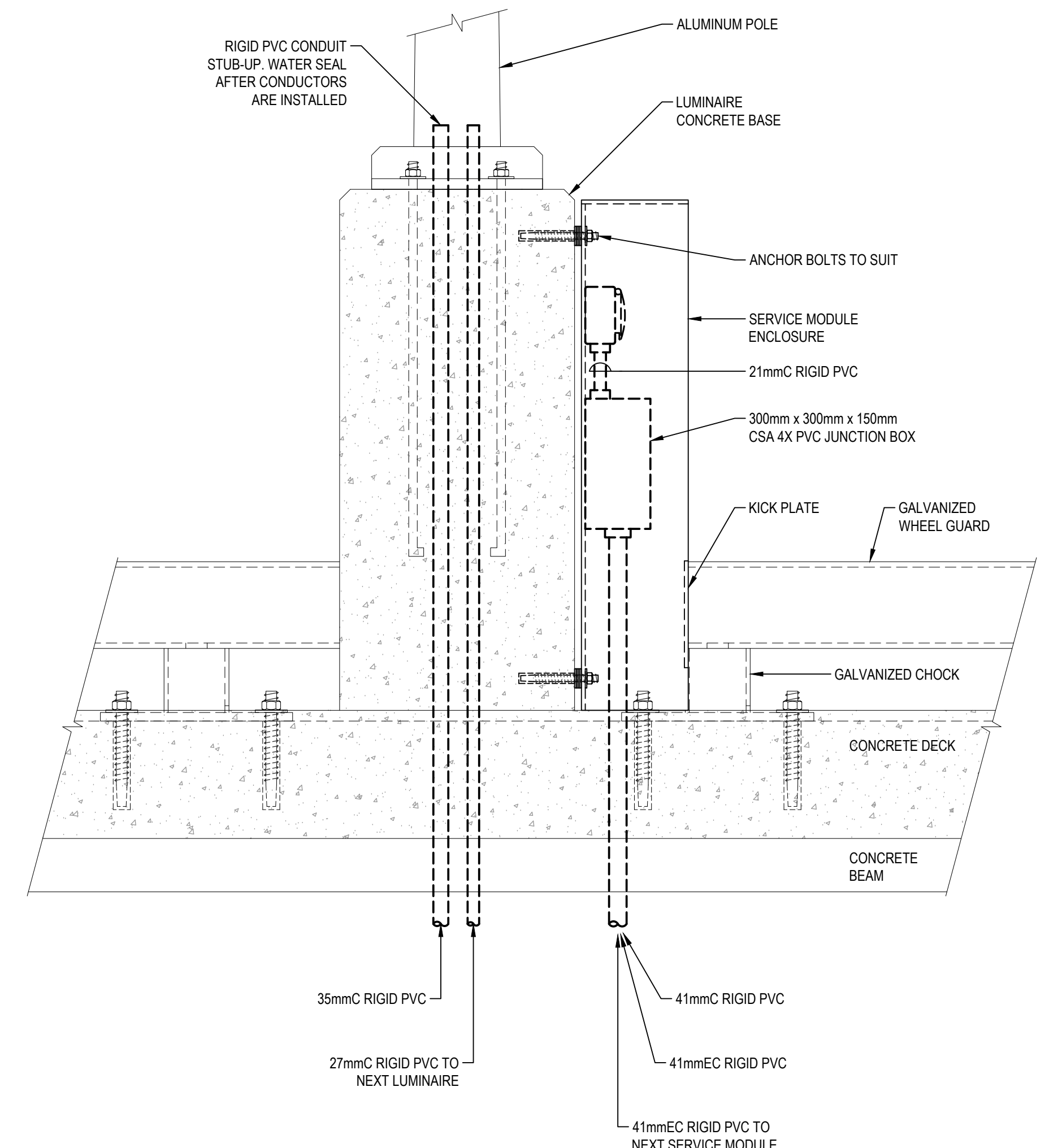
Documents prepared by Tek Consultants Limited as instruments of service shall remain the property of the design professional.  
 This design document is prepared solely for use by the party with whom Tek Consultants Limited has entered into an agreement and there are no representations of any kind made by the design professional to any party with whom the design professional has not entered into an agreement.



5C PLAN VIEW  
 E3

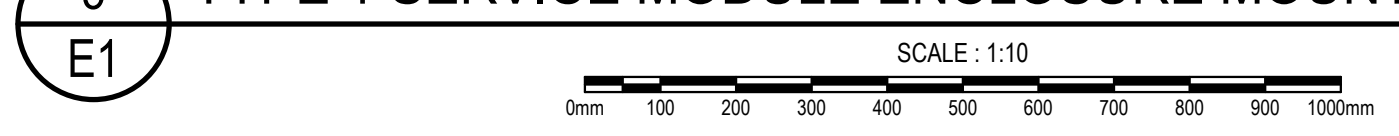


5A ELEVATION  
 E3



5B SECTION  
 E3

5 TYPE 1 SERVICE MODULE ENCLOSURE MOUNTING DETAIL



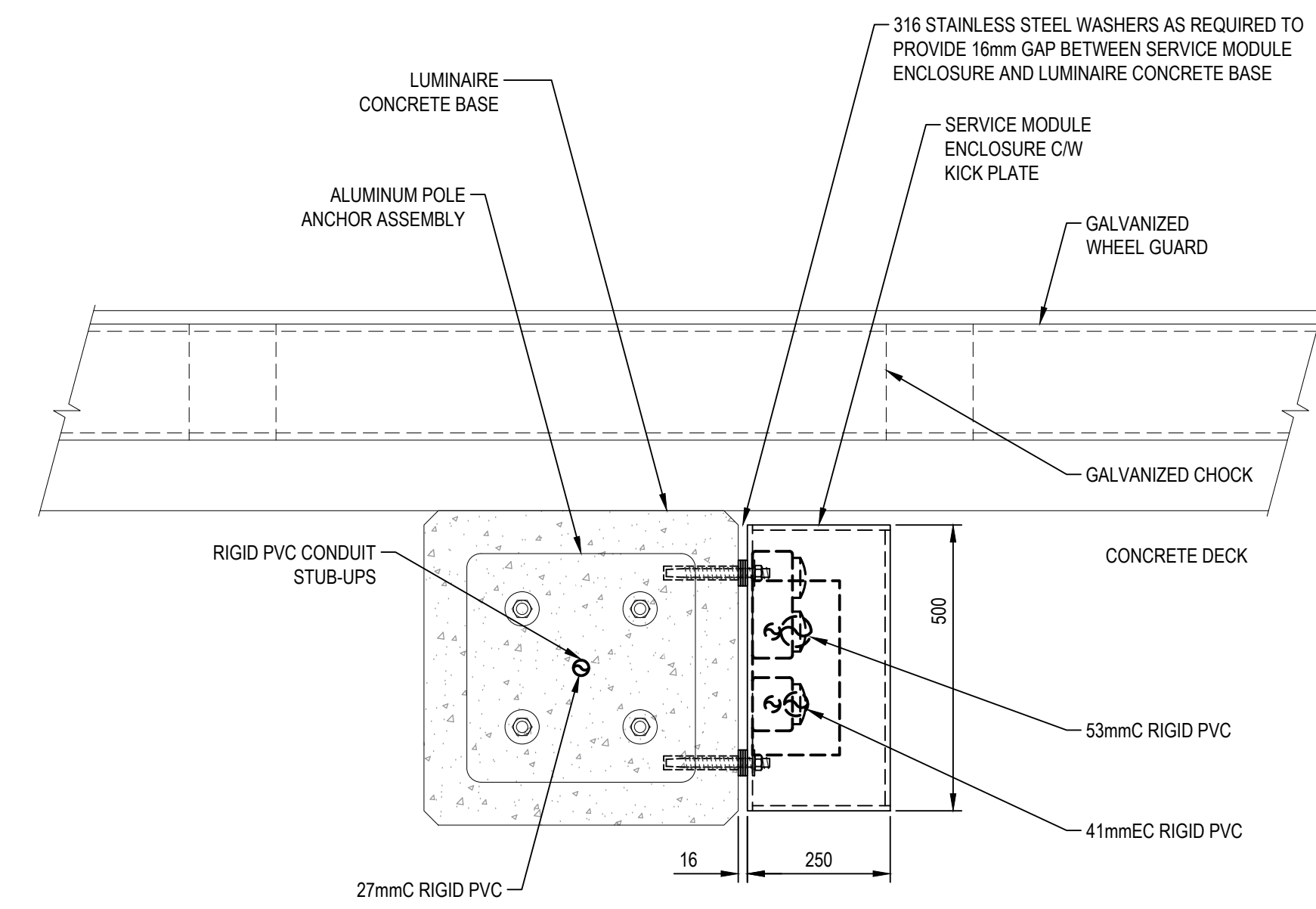
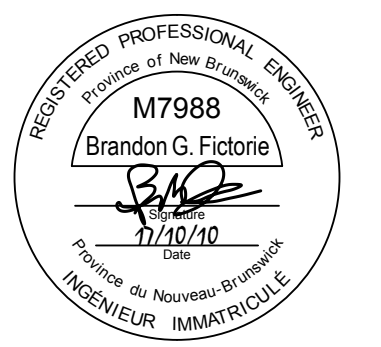
0	ISSUED FOR TENDER	OCT.10 2017
revisions		date

project / projet  
**NEW MARGINAL WHARF AND RAMP**  
**CAP-DES-CAISSIE WHARF**  
 KENT CO., NB

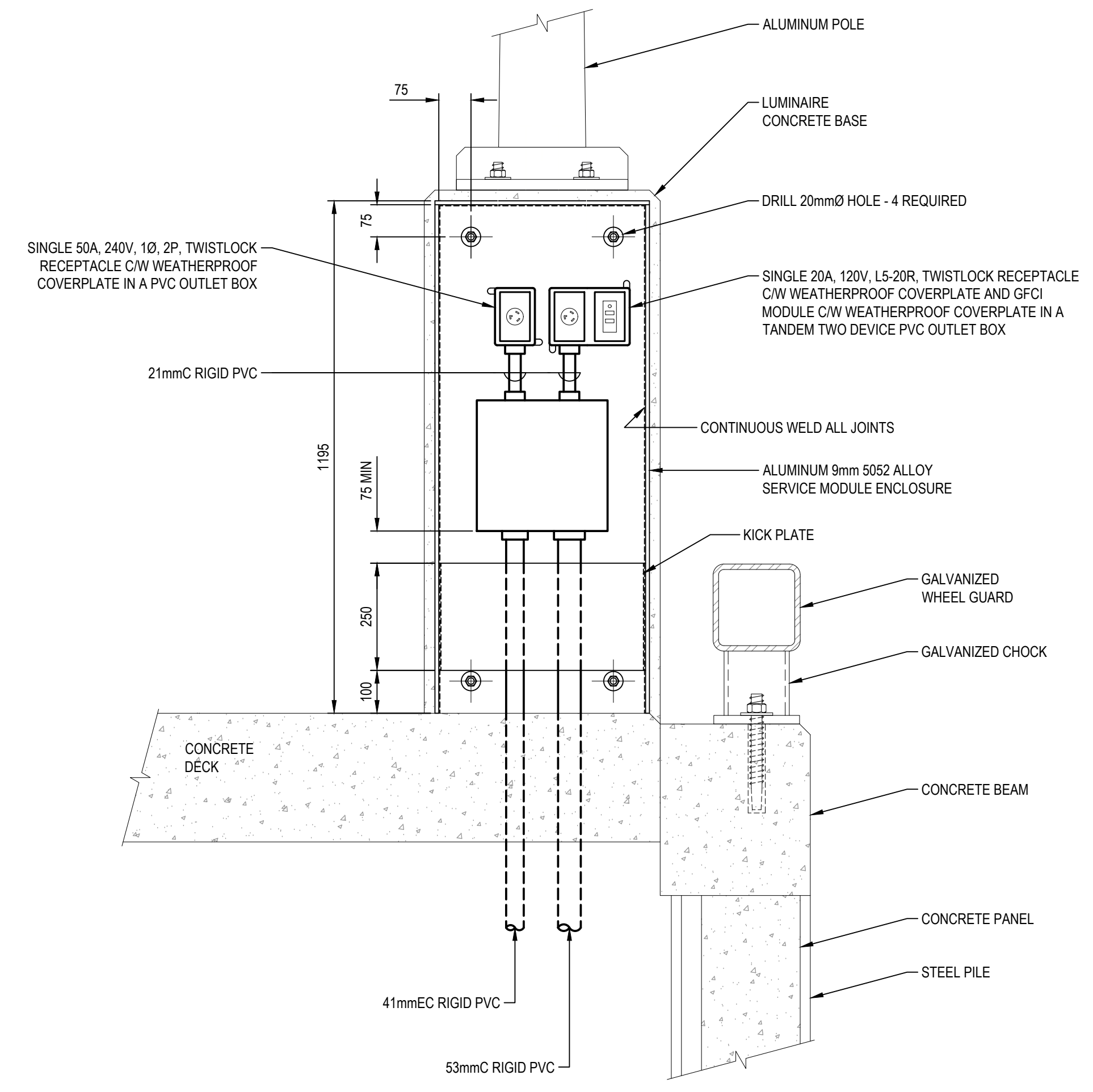
drawing / dessin  
**ELECTRICAL DETAILS**

designed BGF	conçu
date OCTOBER 2017	
drawn DD	dessiné
date OCTOBER 2017	
approved BGF	approuvé
date OCTOBER 2017	
Tender	Soumission
Project Manager <i>W. L. L.</i>	Administrateur de projets
project number	no. du projet
<b>722234</b>	
drawing no.	no. du dessin
<b>E3 OF 6</b>	

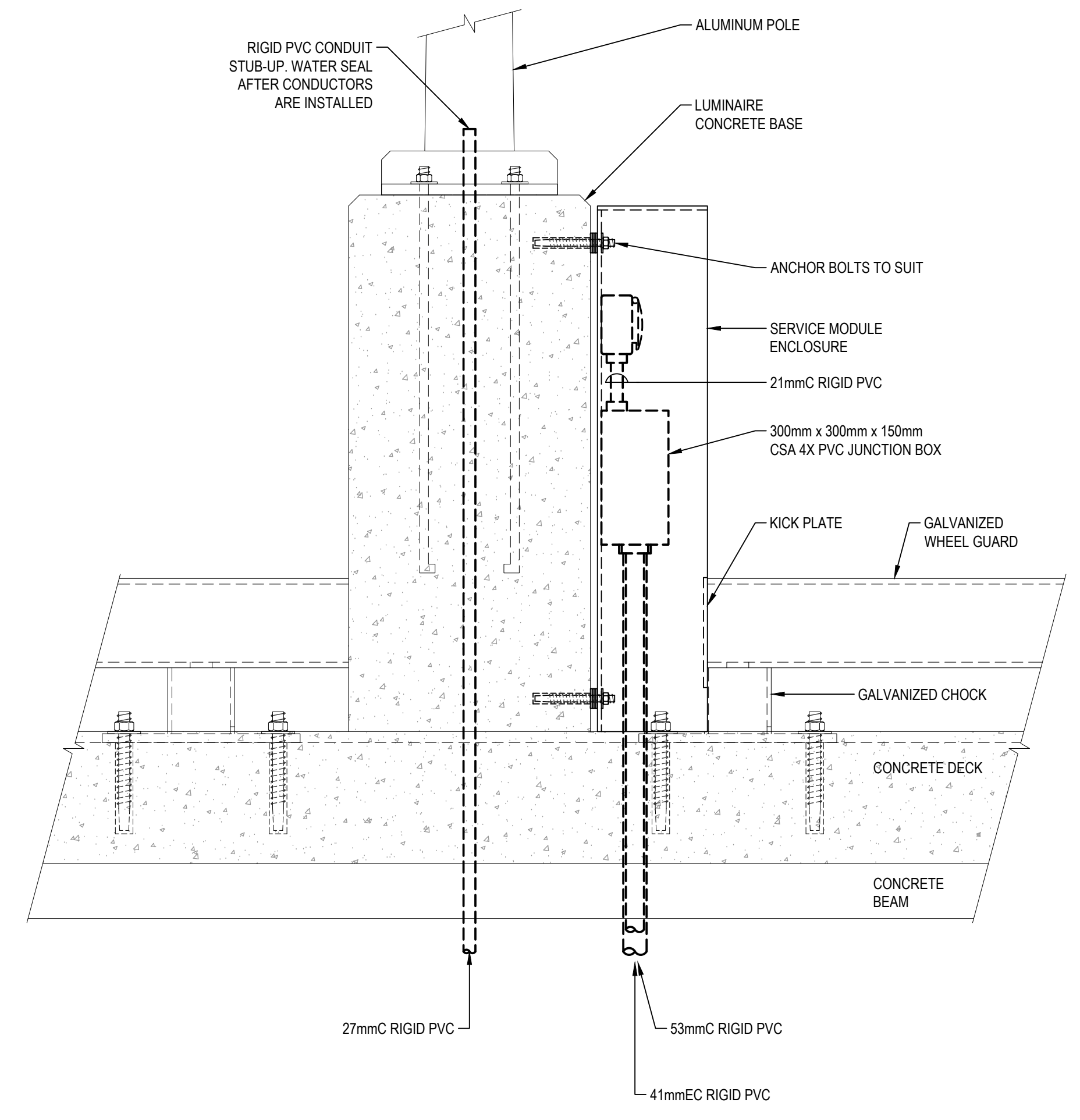
Documents prepared by Tek Consultants Limited as instruments of service shall remain the property of the design professional.  
 This design document is prepared solely for use by the party with whom Tek Consultants Limited has entered into an agreement and there are no representations of any kind made by the design professional to any party with whom the design professional has not entered into an agreement.



6C PLAN VIEW  
 E4

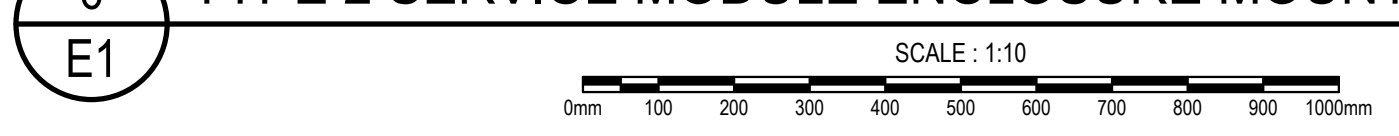


6A ELEVATION  
 E4



6B SECTION  
 E4

6 TYPE 2 SERVICE MODULE ENCLOSURE MOUNTING DETAIL



0	ISSUED FOR TENDER	OCT.10 2017
revisions		date

project	projet
NEW MARGINAL WHARF AND RAMP CAP-DES-CAISSIE WHARF KENT CO., NB	
drawing	dessin

**ELECTRICAL DETAILS**

designed	BGF	conçu
date	OCTOBER 2017	
drawn	DD	dessiné
date	OCTOBER 2017	
approved	BGF	approuvé
date	OCTOBER 2017	
Tender		Soumission
Project Manager	<i>W. Fictore</i>	Administrateur de projets
project number		no. du projet
	722234	
drawing no.		no. du dessin
	E4 OF 6	

Documents prepared by Tek Consultants Limited as instruments of service shall remain the property of the design professional.  
 This design document is prepared solely for use by the party with whom Tek Consultants Limited has entered into an agreement and there are no representations of any kind made by the design professional to any party with whom the design professional has not entered into an agreement.



**NOTES**

- DISCONNECT AND REMOVE NEUTRAL / GROUNDING JUMPER.

0	ISSUED FOR TENDER	OCT.10 2017
revisions		date

project **NEW MARGINAL WHARF AND RAMP CAP-DES-CAISSIE WHARF** project  
 KENT CO., NB

**POWER DISTRIBUTION SINGLE LINE DIAGRAM**

designed BGF	conçu
date OCTOBER 2017	
drawn DD	dessiné
date OCTOBER 2017	
approved BGF	approuvé
date OCTOBER 2017	
Tender	Soumission
Project Manager <i>W. B. G.</i>	Administrateur de projets
project number <b>722234</b>	no. du projet
drawing no. <b>E5 OF 6</b>	no. du dessin

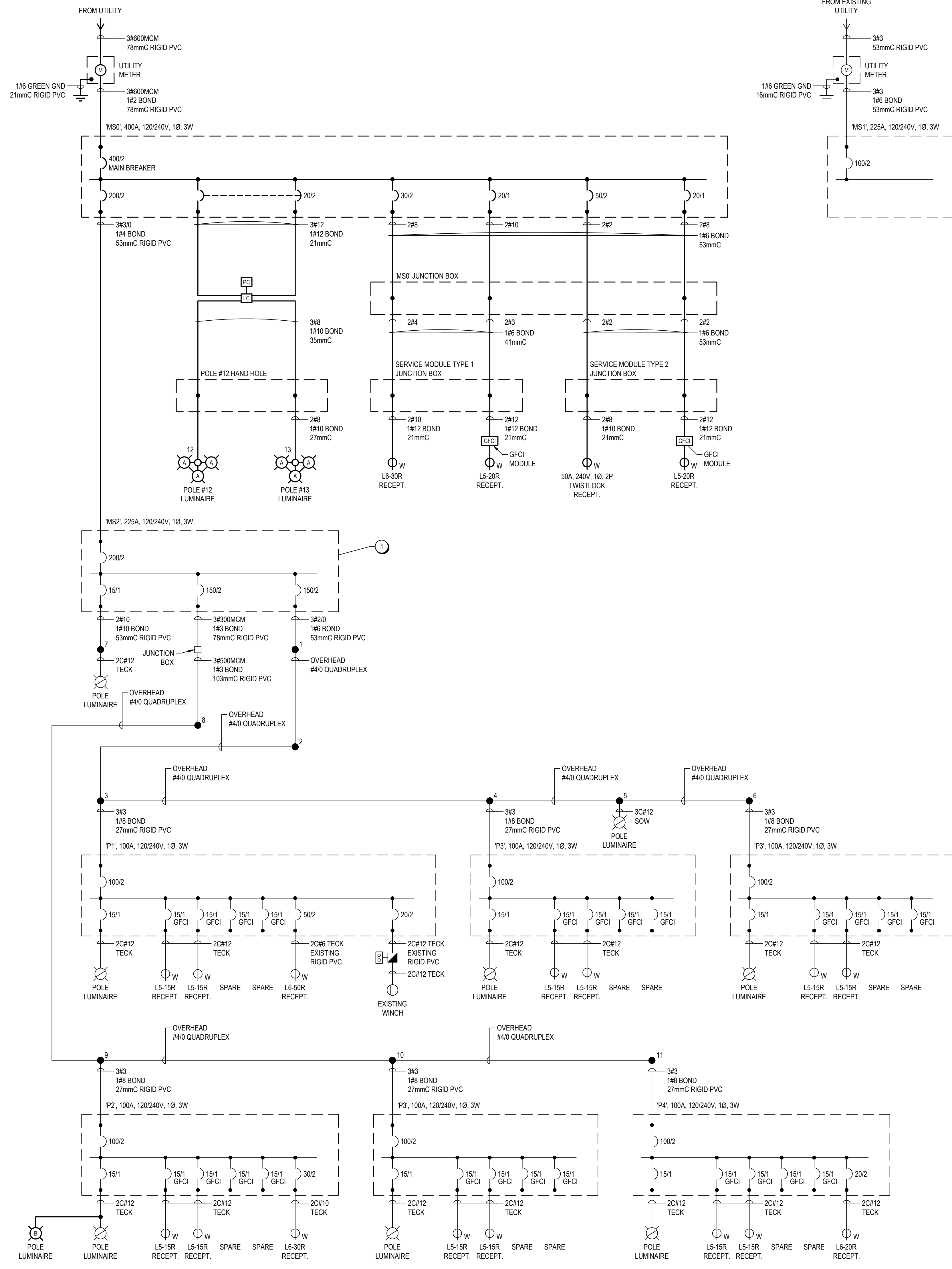
**DEMAND CALCULATION**  
**C.E.C. SECTION 78-056, WHARVES**

(1) (a)	100% OF FIRST 4 RECEPTACLES: (2 x 50A x 240V) + (2 x 30A x 240V) =	38.4 kW	x 100% =	38.4 kW
(b)	65% OF NEXT 4 RECEPTACLES: (1 x 20A x 240V) + (2 x 20A x 120V) + (1 x 15A x 120V) =	24.7 kW	x 65% =	16.1 kW
(c)	50% OF NEXT 5 RECEPTACLES: (5 x 15A x 120V) =	9 kW	x 50% =	4.5 kW
(d)	25% OF REMAINING RECEPTACLES: (6 x 15A x 120V) =	10.8 kW	x 25% =	2.7 kW
SUB-TOTAL = 38.4kW + 16.1kW + 4.5kW + 2.7kW =		61.7 kW		
SITE LIGHTING =		3.1 kW		
WINCH =		3.9 kW		
TOTAL = 61.7kW + 3.1kW + 3.9kW =		68.7 kW		
		68.7kW ÷ 240V =	286.1 A	

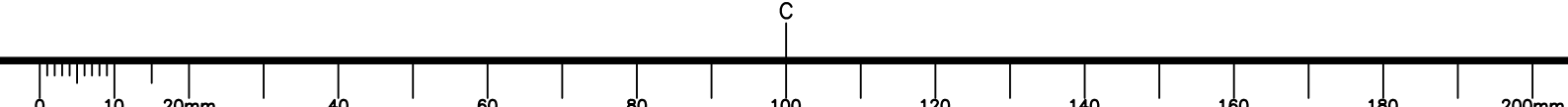
POWER SUPPLY: 120/240V, 1Ø, 3W  
 MAINS: 400A, 400A MAIN BREAKER  
 NUMBER OF CCTS: 18

PANEL "MS2"  
 MOUNTING: SURFACE  
 LOCATION: METERED SERVICE #0 BACKBOARD  
 REMARKS: CSA 4X STAINLESS STEEL ENCLOSURE

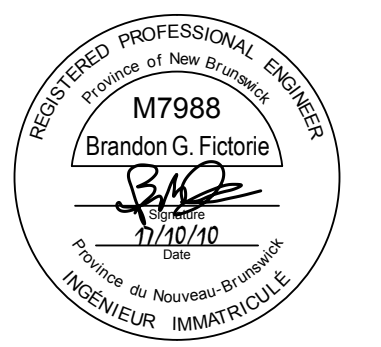
DESCRIPTION	WATTAGE		#	BKR	CIRCUIT	BKR	#	WATTAGE		DESCRIPTION
	A	B						A	B	
POLE 12 AND 13 LUMINAIRES	591		2	20	1 a 2 3 b 4	200	2	19040	18840	PANEL "MS2"
POLE 12 WELDING RECEPTACLE	2880		2	30	5 a 6 7 b 8	50	2	4800	4800	POLE 13 WINCH RECEPTACLE
POLE 12 RECEPTACLE	1920		1	20	9 a 10 11 b 12	20	1	1920	1920	POLE 13 RECEPTACLE
SPARE			1	15	13 a 14 15 b 16	15	1			SPARE
SPARE			1	15	17 a 18					SPARE
PHASE LOADS:	5391	3471							25750	23640
TOTAL LOAD:	58262									
TOTAL PHASE LOADS	31151	27111								
CURRENT (A) @ 240V:	243									



**7 POWER DISTRIBUTION SINGLE LINE DIAGRAM**  
 E5 SCALE: N.T.S.



Documents prepared by Tek Consultants Limited as instruments of service shall remain the property of the design professional.  
This design document is prepared solely for use by the party with whom Tek Consultants Limited has entered into an agreement and there are no representations of any kind made by the design professional to any party with whom the design professional has not entered into an agreement.



**GENERAL NOTES:**

- EXISTING PLAN IS ISSUED FOR INFORMATION ONLY AND SHOW MAJOR ITEMS ONLY. CONTRACTOR TO EXAMINE ELECTRICAL DRAWINGS, VISIT THE SITE TO VERIFY EXISTING EQUIPMENT AND CONDITIONS AND SCOPE OF WORK INVOLVED IN DEMOLITION PRIOR TO SUBMITTING A TENDER. EXTRAS WILL NOT BE CONSIDERED BECAUSE ACTUAL CONDITIONS DIFFER FROM DRAWINGS AND ALL COSTS RELATING TO EXISTING SITE CONDITIONS MUST BE INCLUDED IN TOTAL TENDERED PRICE.
- SITE IS TO REMAIN OPERATIONAL FOR FISHERMEN DURING RENOVATION. INSTALL NEW WORK WHILE MAINTAINING EXISTING ELECTRICAL. ONCE FISHING SEASON IS FINISHED, ENERGIZE NEW SERVICE AND REMOVE EXISTING ELECTRICAL MADE OBSOLETE INCLUDING CONDUIT AND WIRING.

**NOTES**

- COORDINATE WITH NB POWER FOR UPGRADE OF NEW OVERHEAD SERVICE.
- COORDINATE WITH NB POWER FOR REMOVAL OF EXISTING SERVICE AND METER AND INSTALLATION OF NEW SERVICE AND METER.

0	ISSUED FOR TENDER	OCT.10 2017
revisions		date

project **NEW MARGINAL WHARF AND RAMP CAP-DES-CAISSIE WHARF**  
KENT CO., NB

drawing **WHARF PLAN EXISTING ELECTRICAL** dessin

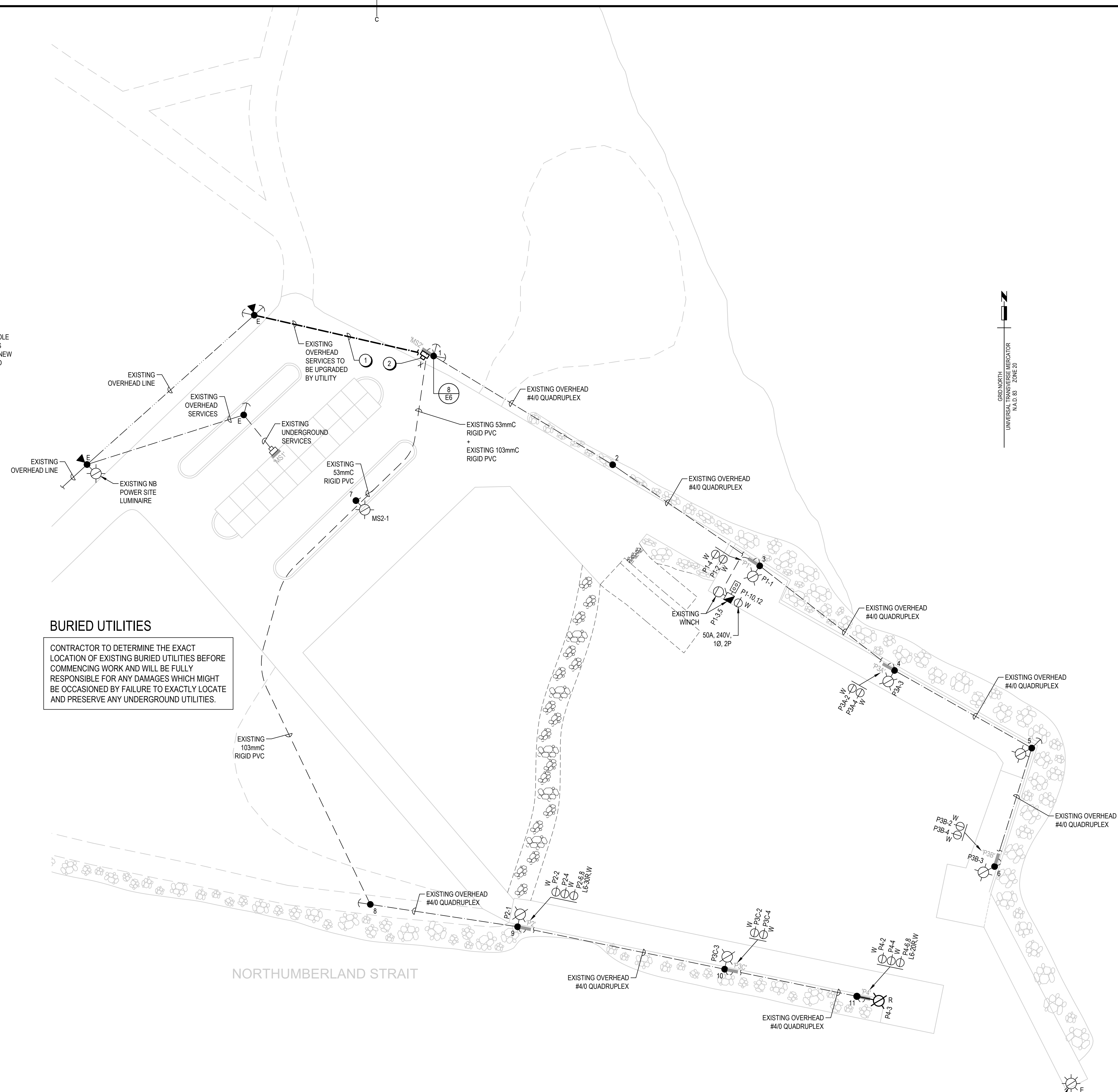
designed BGF	conçu
date OCTOBER 2017	
drawn DD	dessiné
date OCTOBER 2017	
approved BGF	approuvé
date OCTOBER 2017	

Tender *W. G. Fictore* Soumission

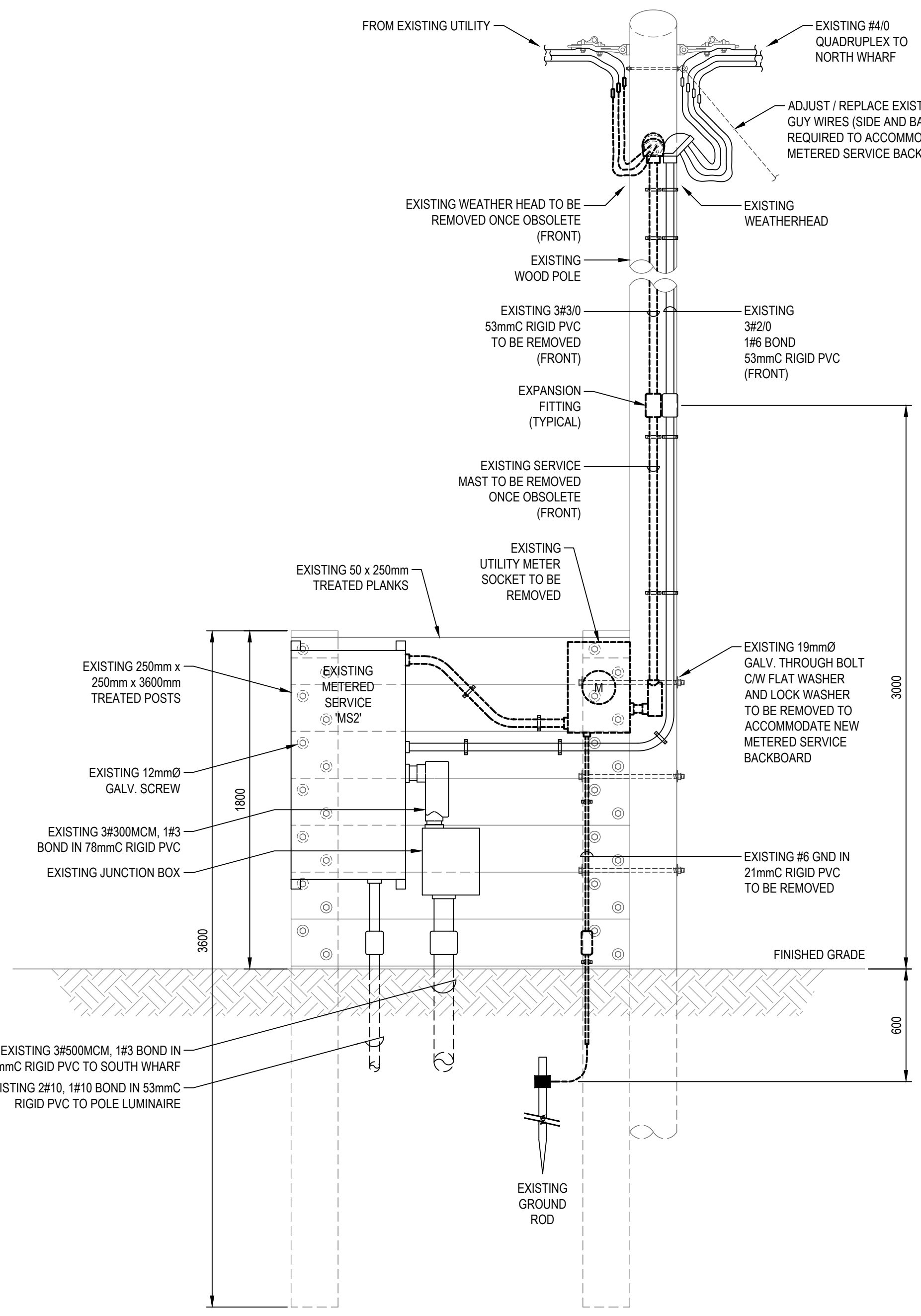
Project Manager *W. G. Fictore* Administrateur de projets

project number **722234** no. du projet

drawing no. **E6 OF 6** no. du dessin



**BURIED UTILITIES**  
CONTRACTOR TO DETERMINE THE EXACT LOCATION OF EXISTING BURIED UTILITIES BEFORE COMMENCING WORK AND WILL BE FULLY RESPONSIBLE FOR ANY DAMAGES WHICH MIGHT BE OCCASIONED BY FAILURE TO EXACTLY LOCATE AND PRESERVE ANY UNDERGROUND UTILITIES.



**8 EXISTING METERED SERVICE 'MS2' DETAIL**  
SCALE: 1:20

**WHARF PLAN - EXISTING ELECTRICAL**  
SCALE: 1:500