

KEY LOCATION PLAN

PRIME CONSULTANT

**NEVLAB ENGINEERING LIMITED**

CONSULTING ENGINEERS - PROJECT MANAGERS

SOUTH RIVER OFFICE P.O. BOX 400, ST. JOHN'S OFFICE  
 TEL. 709-786-4446 CLARKE'S BEACH, TEL. 709-738-2065  
 FAX. 709-786-4140 NL, ADA 1W0 FAX. 709-738-2066  
 e-mail: info@newlabengineering.ca

SUB CONSULTANT CORE PROJECT #17-2759

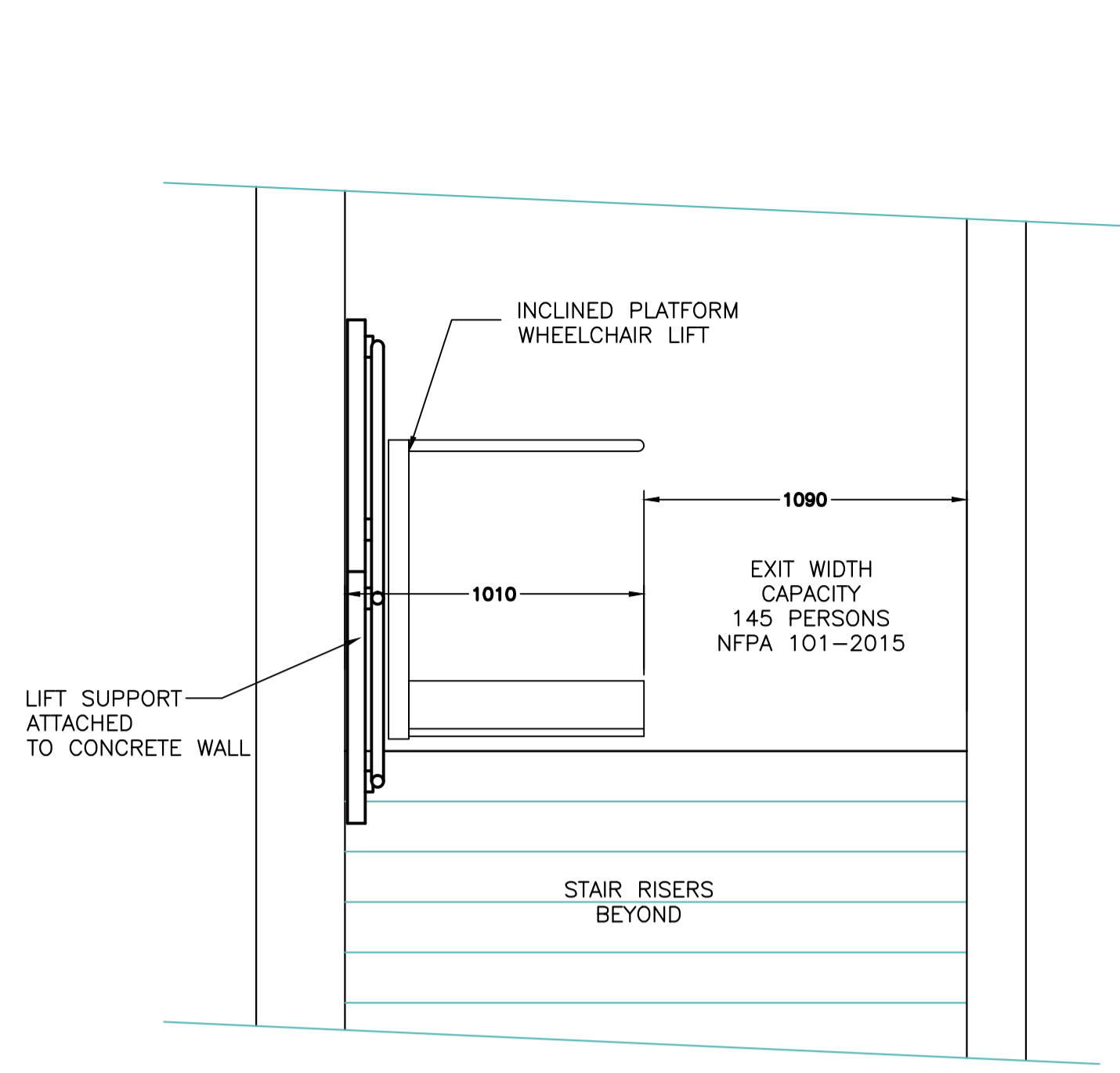
**COREC ENGINEERING INC.**

MECHANICAL & ELECTRICAL CONSULTANT

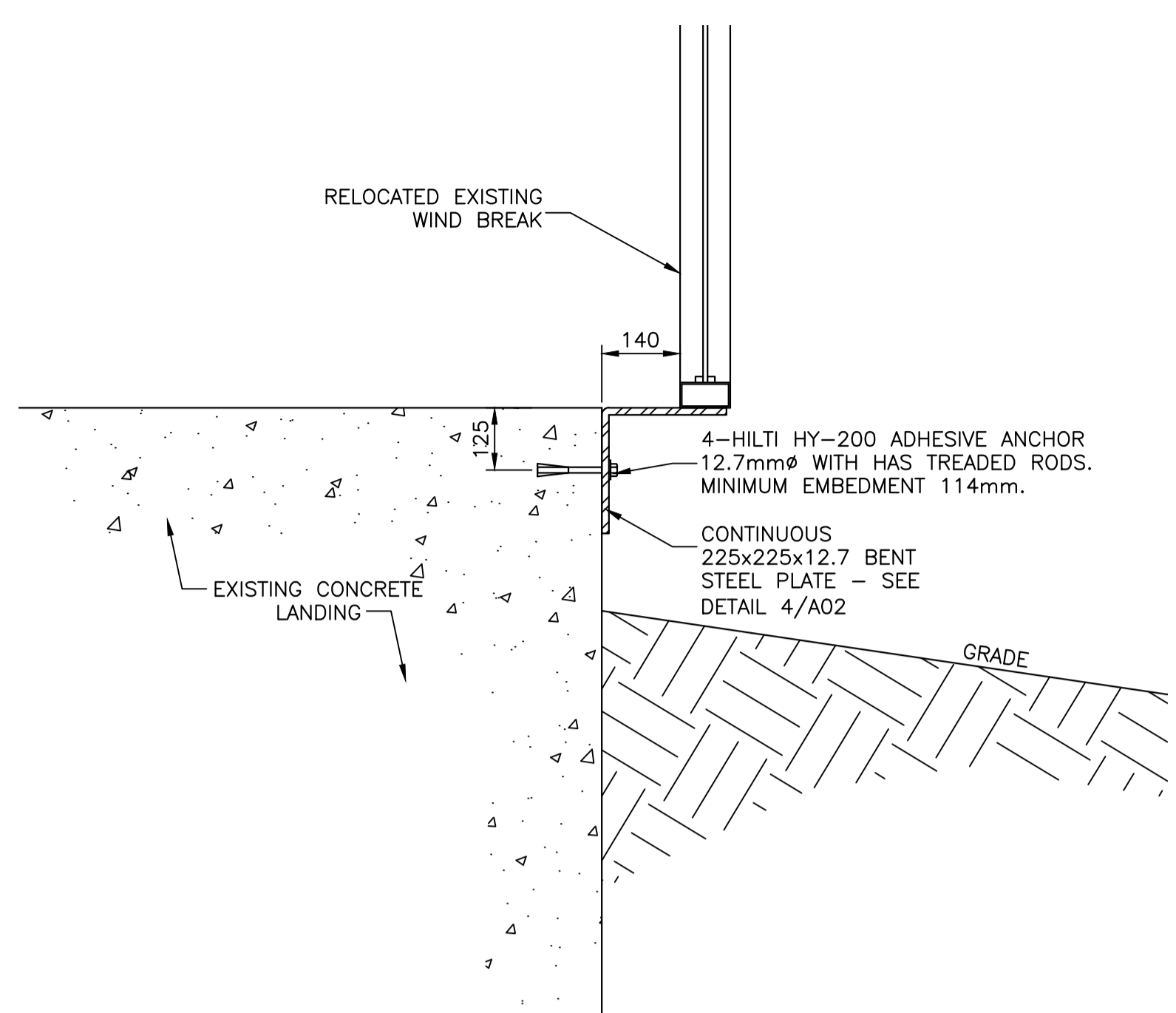
57 PRYOR PLACE ST. JOHN'S, NL, CANADA A1B 4J8 TEL. (709) 722-8813 FAX (709) 722-8810

REGISTERED PROFESSIONAL ENGINEER  
 MAXWELL MERCER  
 SIGNATURE 11/21/17  
 DATE

PROVINCE OF NEWFOUNDLAND PERMIT HOLDER CLASS "A"  
 This Permit Allows  
 NEWLAB ENGINEERING LIMITED  
 01366  
 To practice Professional Engineering in Newfoundland and Labrador.  
 Permit No. as issued by APEON 020011 which is valid for the year 2012.



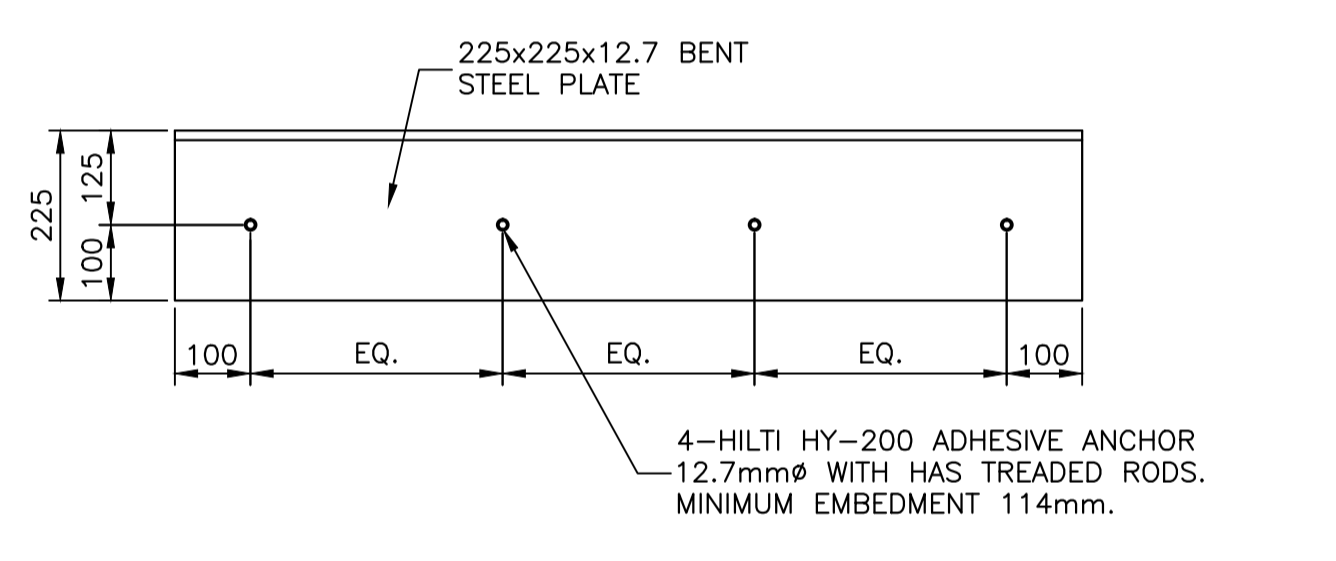
STAIR CROSS SECTION  
 SCALE : 1:20



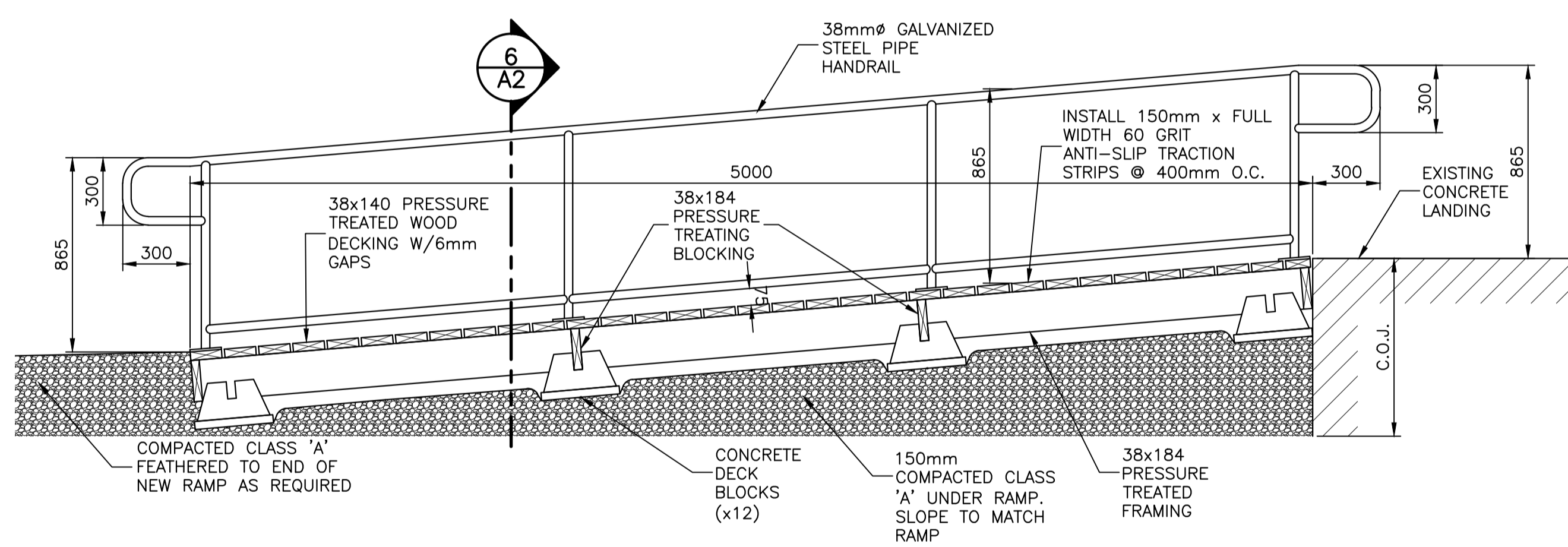
RELOCATED WIND BREAK DETAIL  
 SCALE : 1:10

- GROUP H-01
- |     |   |                    |                               |      |
|-----|---|--------------------|-------------------------------|------|
| .1  | 1 | EXIT DEVICE        | CD9408-YR08-LFSC TB/SB        | 630  |
| .2  | 3 | CYLINDER           | 97 (KEYED TO EXISTING)        | 626  |
| .3  | 1 | ELECTRIC STRIKE    | HES 9400 (SURFACE)            | 630  |
| .4  | 1 | POWER SUPPLY       | ES100                         | STD. |
| .5  | 1 | AUTOMATIC OPENER   | MAGIC FORCE (OR EQUAL)        | 628  |
| .6  | 1 | MOUNTING PLATE     | 150mm x WIDTH OF OPERATOR     | 689  |
| .7  | 1 | KEY SWITCH         | CM-170/6                      | 630  |
| .8  | 1 | SWITCH NETWORK     | CM-11                         | STD. |
| .9  | 1 | LOCKOUT RELAY      | LO-21                         | STD. |
| .10 | 1 | TRANSFORMER        | 142101-12/24V-40VA            | STD. |
| .11 | 1 | SENSING DEVICE     | DK12                          | 671  |
| .12 | 1 | SENSING DEVICE     | BODYGUARD [PULL SIDE]         | 671  |
| .13 | 1 | SENSING DEVICE     | SUPERSCAN [PUSH SIDE]         | 671  |
| .14 | 1 | PUSH BUTTON        | 60/4 [PUSH SIDE]              | 630  |
| .15 | 1 | PUSH BUTTON        | MULLION [PULL SIDE]           | 630  |
| .16 | 1 | DECAL              | CE-714 HANDICAP SYMBOL        | STD. |
| .17 | 1 | DECAL              | CE-715 CAUTION AUTOMATIC DOOR | STD. |
| .18 | 1 | DR. CONTROL DEVICE | 149-100958 12VDC              | STD. |
| .19 | 1 | DCD BACK BOX       | 041-100992LC                  | STD. |
| .20 | 1 | REQUEST TO EXIT    | REX-1000                      | STD. |
| .21 | 1 | DOOR CONTACT       | TA-4103                       | STD. |
| .22 | 1 | JUNCTION BOX       | 7490 [JB7]                    | STD. |
| .23 |   | NOTE:              |                               |      |
- FREE EXITING AT ALL TIMES.
  - DOOR CAN BE LOCKED/UNLOCKED FROM EXTERIOR KEY BY-PASS.
  - EXIT DEVICE CAN BE DOGGED OPEN FOR PUSH/PULL OPERATION.
  - PLACING CM-170/6 AT NIGHT POSITION TURNS OFF EXTERIOR PUSH PAD.
  - WHEN IN UNLOCKED POSITION EITHER OPERATOR BUTTON RELEASES DOOR AND OPENS IT.
  - WHEN IN LOCKED POSITION INTERIOR OPERATOR BUTTON RELEASES DOOR AND OPENS IT.
  - HOOK UP OF LOW VOLTAGE ITEMS BY EQUIPMENT INSTALLER.
  - LOW VOLTAGE CONNECTIONS TO BE MADE BY PLUG CONNECTORS.
  - REQUIRES 12V/24V [CONDUIT] FROM DCD LOCATION TO POWER SUPPLY LOCATION.
  - REQUIRES 12V/24V [CONDUIT] FROM DCD LOCATION TO SITE CONTROLLER LOCATION.
  - REQUIRES 12V/24V [CONDUIT] FROM POWER SUPPLY TO DCD.
  - REQUIRES 12V/24V [CONDUIT] FROM DCD TO ELECTRIC STRIKE.
  - REQUIRES 12V/24V [CONDUIT] FROM AUTOMATIC OPERATOR TO DCD.
  - REQUIRES 12V/24V [CONDUIT] FROM AUTOMATIC OPERATOR TO POWER SUPPLY LOCATION.
  - REQUIRES 12V/24V [CONDUIT] TO EACH PUSH BUTTON FROM AUTOMATIC OPERATOR.
  - REQUIRES 12V/24V [CONDUIT] KEY SWITCH FROM AUTOMATIC OPERATOR.
  - REQUIRES 120V [CONDUIT] TO HEADER LOCATION FOR AUTOMATIC OPERATOR.
  - 120V ELECTRICAL WIRING AND CONDUIT BY DIVISION 26.

DOOR HARDWARE  
 SCALE : 1:10

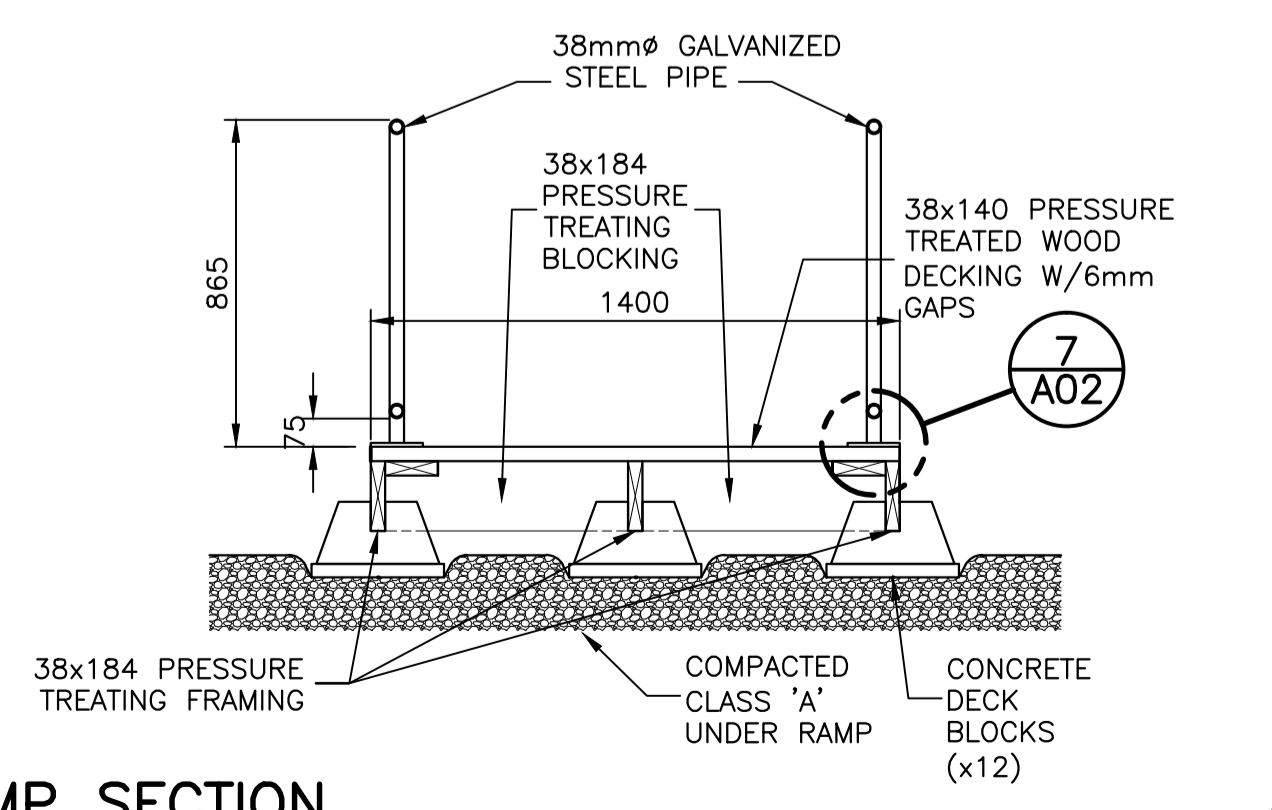


STEEL PLATE ANCHOR DETAIL  
 SCALE : 1:10

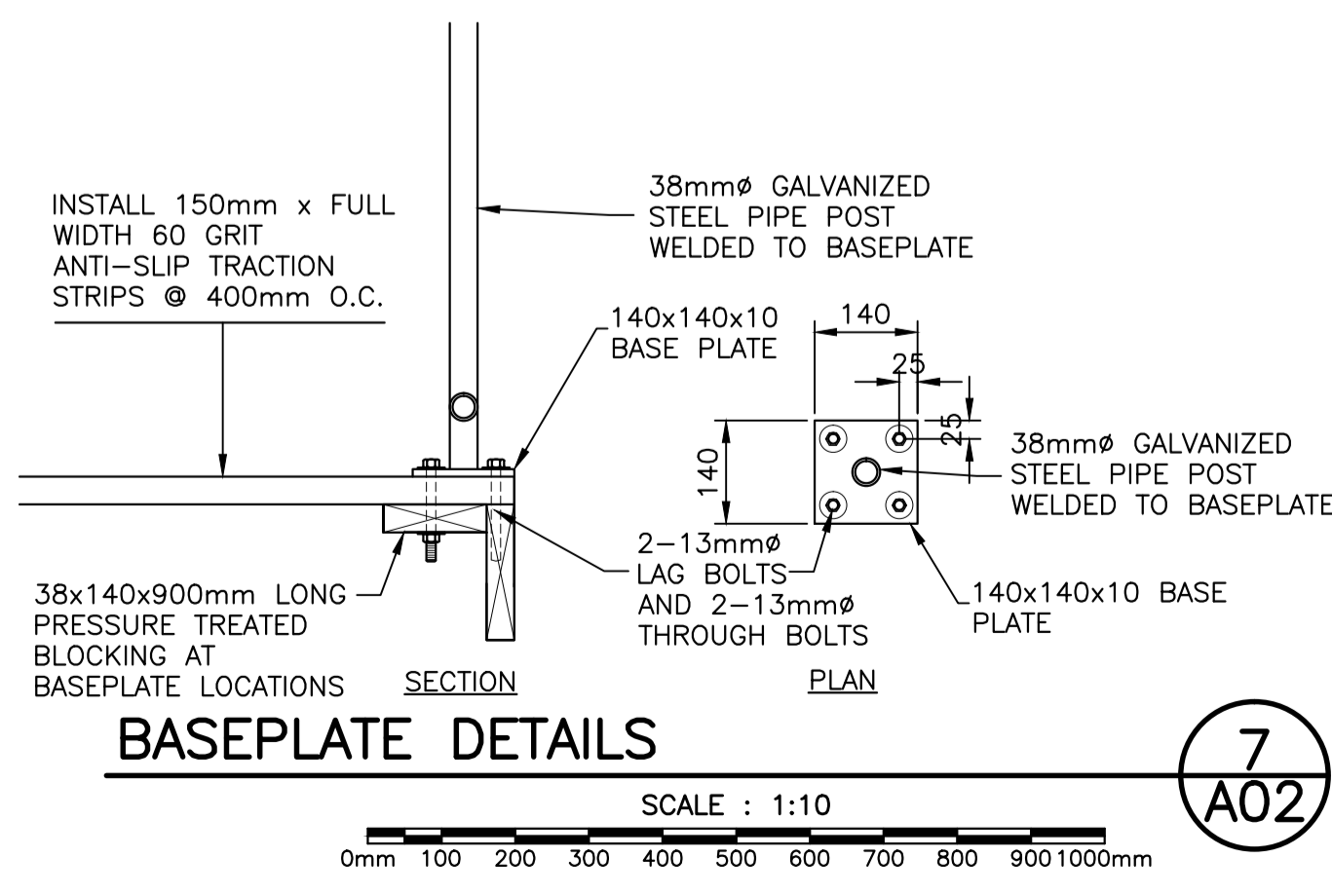


RAMP SECTION  
 SCALE : 1:20

- STEEL NOTES:
- STEEL ANGLE TO CSA G40.21 300W.
  - STEEL ANGLE PRIME PAINTED. TOUCH UP SCRATCHES AFTER ERECTION.
  - HILTI ANCHORS TO BE INSTALLED IN ACCORDANCE TO MANUFACTURER'S INSTRUCTIONS.



RAMP SECTION  
 SCALE : 1:20



BASEPLATE DETAILS  
 SCALE : 1:10

RD	ISSUED FOR TENDER	NOV.21.2017	R.B.	
no.	revision	date	by	approved
	revision	date	par	approve
Project - projet				
<b>TORRENT RIVER FISHWAY - OBSERVATION CHAMBER WHEELCHAIR LIFT INSATLLATION HAWKE'S BAY, NL</b>				
Drawing - dessin				
DETAILS				
drawn - dessine	S.L.	designed - dessine par	R.B.	
date - date	OCTOBER 2017	checked - verifie	R.B.	
scale - echelle	AS SHOWN	approved for tender - approuve pour l'offre		
project no. - projet no.	F6879-179229	drawing no. - no du dessin	1211104A010A02	sheet - feuille
				A02