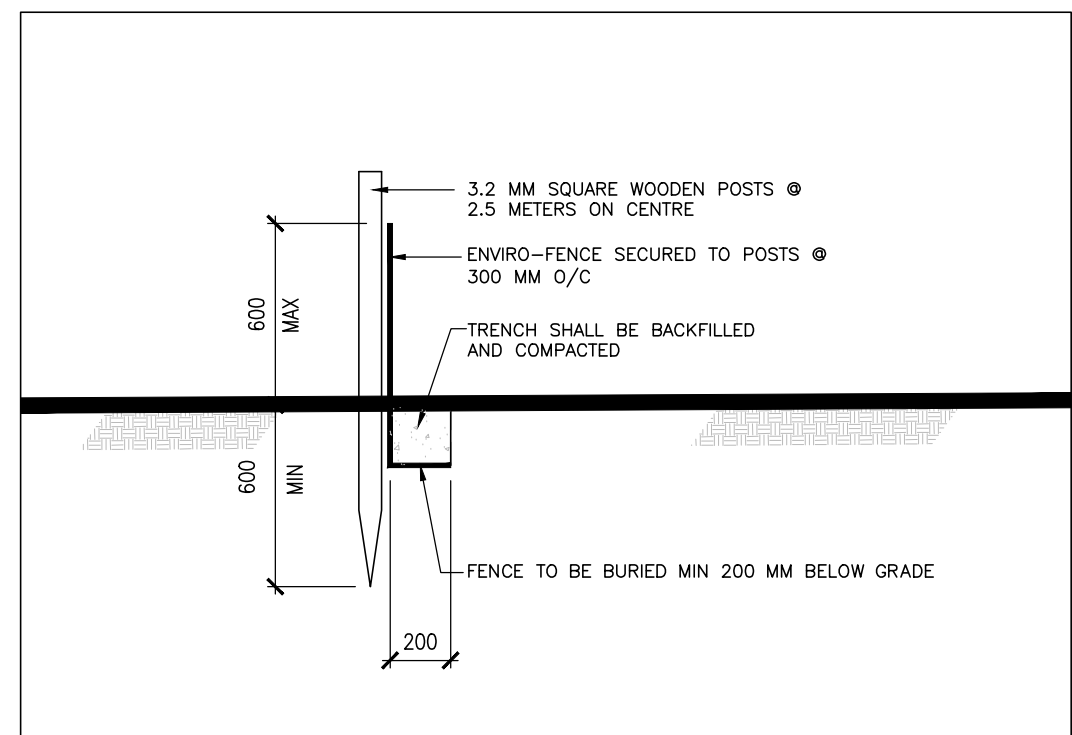
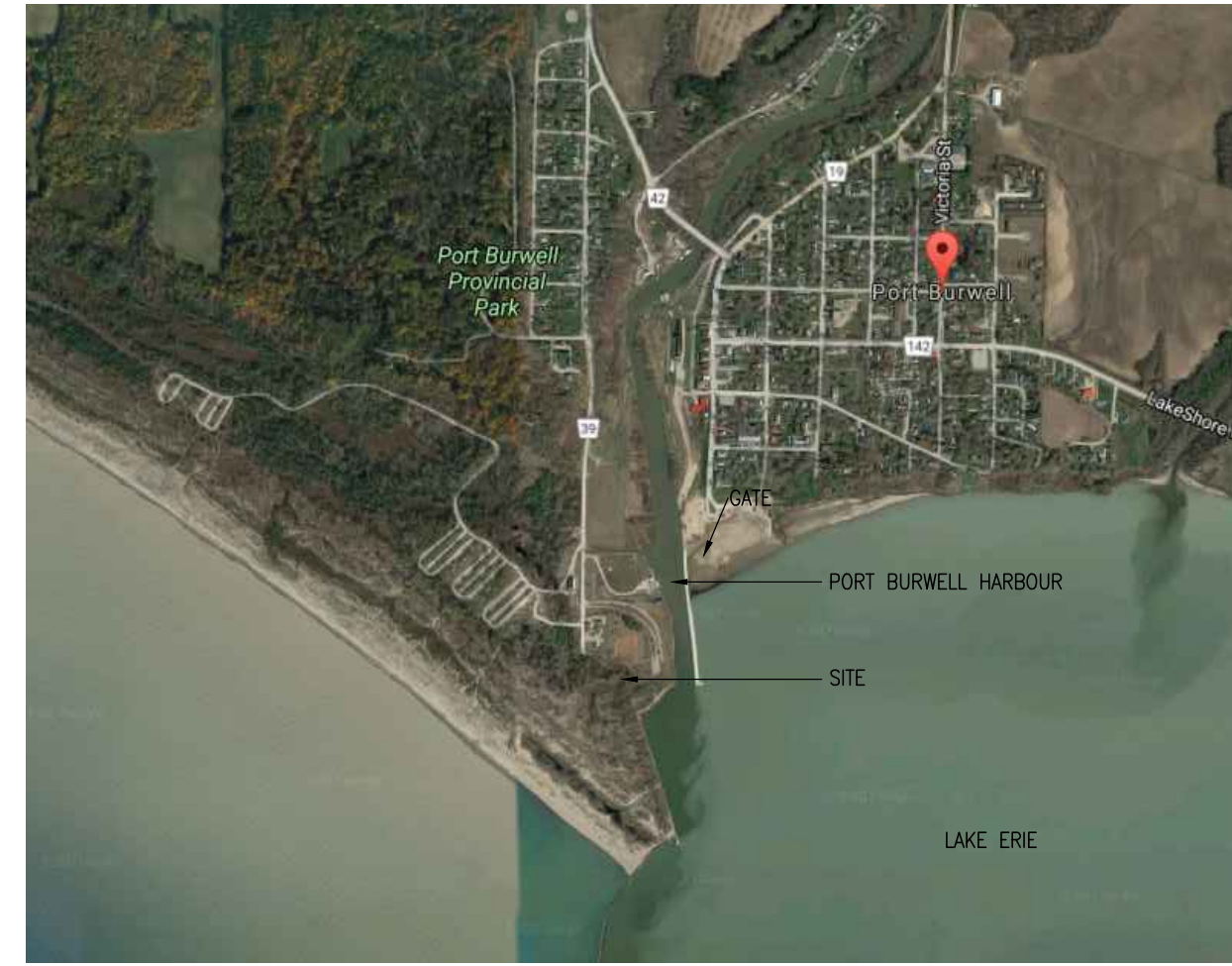


SITE ACCESS PLAN
NTS1
A100 A100
SILT FENCE DETAIL
NTS

GENERAL

1. MAINTAIN SECURITY OF SITE AT ALL TIMES.
2. DO CONSTRUCTION OCCUPATIONAL HEALTH AND SAFETY IN ACCORDANCE WITH THE CANADA LABOUR CODE AND THE ONTARIO OCCUPATIONAL HEALTH AND SAFETY ACT.
3. PROVIDE AND MAINTAIN A WORKER WASHING FACILITY AT THE ENTRANCE TO WORK AREAS.
4. REFER TO ENVIRONMENTAL PROPERTY ASSESSMENT, PORT BURWELL AUTOMATION BUILDING AT THE PORT BURWELL SMALL CRAFT HARBOUR, PORT BURWELL, ONTARIO PREPARED BY SNC-LAVALIN INC., DATED MARCH 2015.
5. COMPLY WITH THE FEDERAL SPECIES AT RISK ACT (SARA) AND THE PROVINCIAL ENDANGERED SPECIES ACT (ESA). REFER TO APPENDIX C OF THE ENVIRONMENTAL PROPERTY ASSESSMENT.

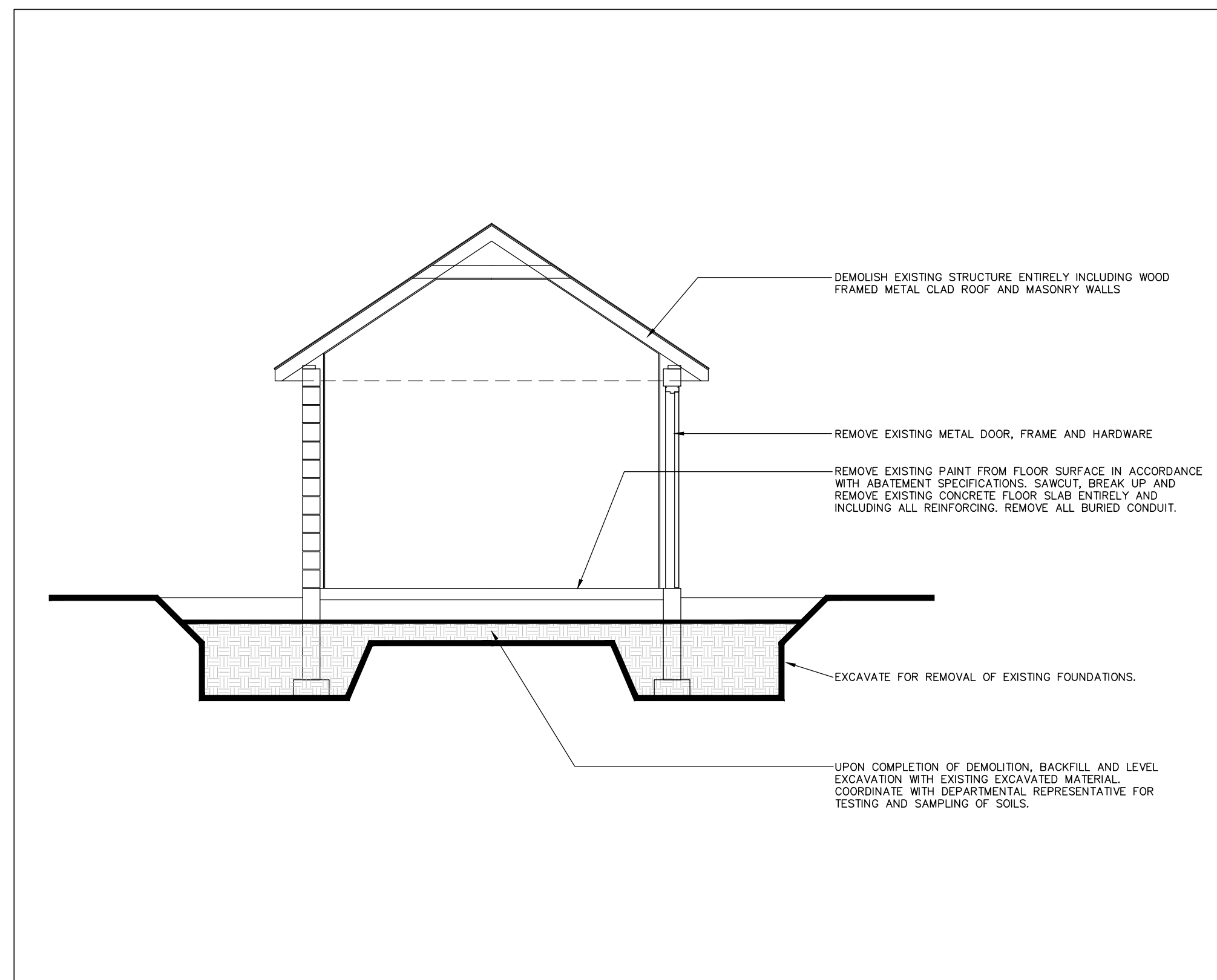
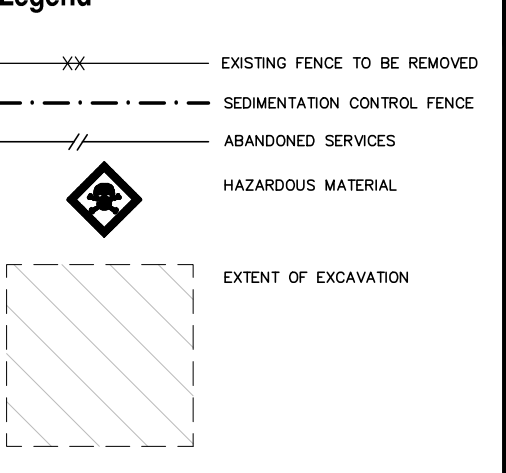
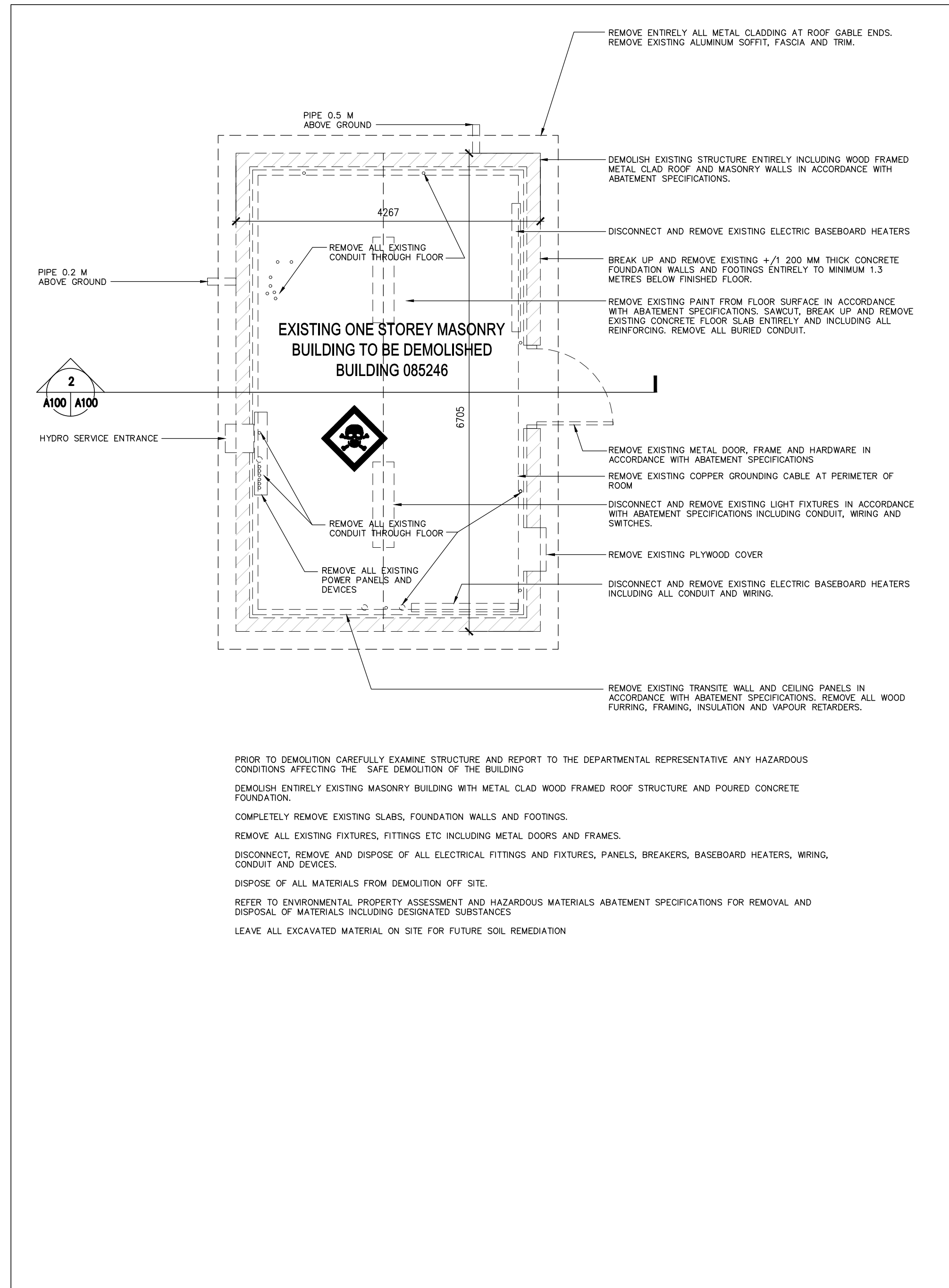
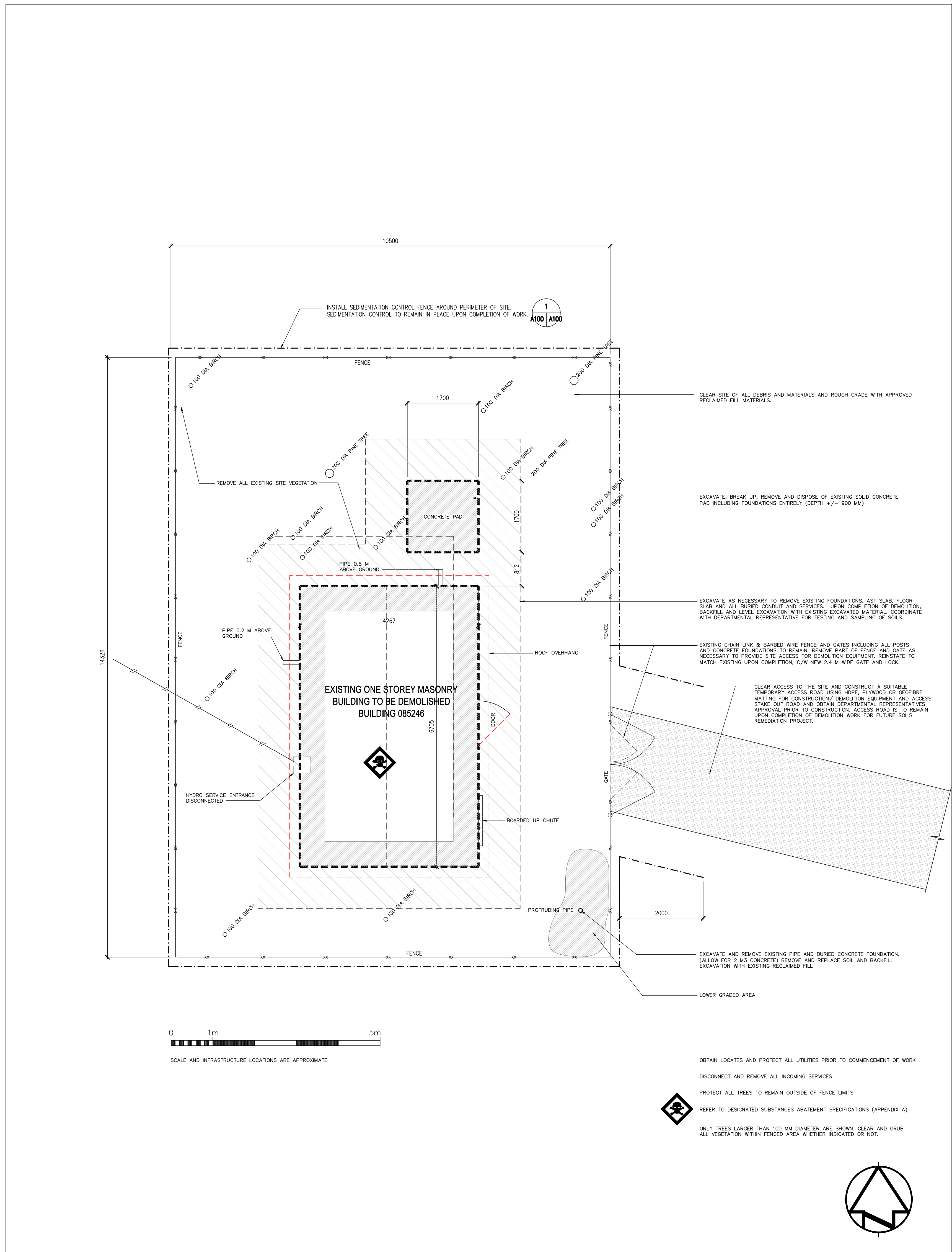
DEMOLITION AND REMOVALS

1. REGULATORY REQUIREMENTS: ENSURE WORK IS PERFORMED IN COMPLIANCE WITH OCPA, CEAA, TCCA, AND APPLICABLE FEDERAL AND PROVINCIAL REGULATIONS.
2. DEMOLITION, REMOVAL AND DISPOSAL OF ALL DESIGNATED SUBSTANCES AND HAZARDOUS MATERIALS SHALL BE IN ACCORDANCE WITH THE REQUIREMENTS OF REGULATORY AUTHORITIES AND THE HAZARDOUS MATERIALS ABATEMENT SPECIFICATIONS - PORT BURWELL AUTOMATION BUILDING DATED OCTOBER 23, 2017, PREPARED BY CANBAM INC. AND ATTACHED AS APPENDIX A TO THE SPECIFICATION.
3. ENSURE THAT DEMOLITION WORK DOES NOT ADVERSELY AFFECT ADJACENT WATERCOURSES, GROUNDWATER AND WILDLIFE, OR CONTRIBUTE TO EXCESS AIR AND NOISE POLLUTION.
4. DO NOT PUMP WATER CONTAINING SUSPENDED MATERIALS INTO WATERCOURSES, STORM OR SANITARY SEWERS, OR INTO ADJACENT PROPERTIES.
5. DO NOT DISPOSE OF WASTE OF VOLATILE MATERIALS INCLUDING BUT NOT LIMITED TO, MINERAL SPIRITS, OIL, PETROLEUM BASED LUBRICANTS, OR TOXIC CLEANING SOLUTIONS INTO WATERCOURSES, STORM OR SANITARY SEWERS.
6. CONTROL DISPOSAL OR RUNOFF OF WATER CONTAINING SUSPENDED MATERIALS OR OTHER HARMFUL SUBSTANCES IN ACCORDANCE WITH LOCAL AUTHORITIES AS DIRECTED BY DEPARTMENTAL REPRESENTATIVE.
7. ANY WATER GENERATED FROM DEMOLITION OR REMOVAL OPERATIONS MUST BE APPROPRIATELY CONTAINED, TREATED OR DISPOSED OF IN ACCORDANCE WITH APPLICABLE LEGISLATION.
8. PREVENT ADVERSELY EFFECTED OR DAMAGE OF ADJACENT STRUCTURES, SERVICES, TREES, LANDSCAPING AND SOIL BY UNLAWFUL TRENCHING, GRADING, PAVING AND UNDERSTRAINS AS REQUIRED. REPAIR DAMAGE TO ADJACENT STRUCTURES AS DIRECTED BY DEPARTMENTAL REPRESENTATIVE.
9. PREVENT DEBRIS FROM DISRUPTING OR BLOCKING SURFACE DRAINAGE SYSTEMS.
10. FIRES AND BURNING OF WASTE OR MATERIALS IS NOT PERMITTED ON SITE.
11. DO NOT BURY WASTE OR MATERIALS ON SITE.
12. PROTECT TREES, PLANTS AND FOLIAGE ON SITE AND ADJACENT PROPERTIES.
13. COVER OR WET DOWN DRY MATERIALS AND WASTE TO PREVENT BLOWING DUST AND DEBRIS. CONTROL DUST ON ALL TEMPORARY ROADS.
14. LEAVE MACHINERY RUNNING ONLY WHILE IN USE, EXCEPT WHERE EXTREME TEMPERATURES PROHIBIT SHUTTING MACHINERY DOWN.
15. ENSURE ALL PETROLEUM STORAGE DEVICES BROUGHT ON AND/OR USED ON SITE ARE IN ACCORDANCE WITH AND COMPLY WITH ALL APPLICABLE STORAGE TANK REGULATIONS AND CODES.
16. REMOVE BIRD DROPPINGS AND ROCKET NOZZLES AND OTHER PESTS AS REQUIRED BY DEPARTMENTAL REPRESENTATIVE. PROVIDE ADDITIONAL PEST CONTROL MEASURES AS REQUIRED AND DIRECTED BY DEPARTMENTAL REPRESENTATIVE.
17. LOCATE AND PROTECT UTILITIES.
18. NOTIFY AND OBTAIN APPROVAL OF UTILITY COMPANIES BEFORE STARTING DEMOLITION.
19. DISCONNECT AND CAP UTILITIES MINIMUM 1.0 METRES BEYOND THE PROPERTY LINE.
20. OTHER SERVICES: DISCONNECT ELECTRICAL SUPPLY LINES AT BOTH ENDS. IF UNDERGROUND, THE DISCONNECTED LINES ARE TO BE EXCAVATED AND COMPLETELY REMOVED AFTER DISCONNECTION.
21. BACKFILL IN AREAS AS INDICATED AND IN ACCORDANCE WITH SECTION 31.23.10 - EXCAVATING, TRENCHING AND BACKFILLING.
22. PERFORM DEMOLITION WORK IN ACCORDANCE WITH CSA 5305.
23. DEMOLISH THE COMPLETE BUILDING STRUCTURE.
24. DEMOLISH CONCRETE PADS AND REMOVE COMPLETELY INCLUDING ALL BELOW GRADE CONCRETE, UNLESS INDICATED OTHERWISE. REMOVE CONCRETE AND SUB-GRADE MATERIAL TO FACILITY ACCEPTING CONTAMINATED MATERIALS.
25. DEMOLISH FOUNDATION WALLS AND FOOTINGS, TO A DEPTH OF 1300 MM BELOW NEW FINISHED GRADE UNLESS INDICATED OTHERWISE. REMOVE CONCRETE TO FACILITY ACCEPTING CONTAMINATED MATERIALS.
26. DEMOLISH TO MINIMIZE BURNING. KEEP MATERIALS WETTED AS DIRECTED BY DEPARTMENTAL REPRESENTATIVE TO MINIMIZE SPREAD OF DUST AND MOLD SPORES.
27. AT END OF EACH DAY'S WORK, LEAVE WORK IN SAFE AND STABLE CONDITION.
28. REMOVE STOCKPILED MATERIAL AS DIRECTED BY DEPARTMENTAL REPRESENTATIVE, WHEN IT INTERFERES WITH OPERATIONS OF PROJECT.
29. CONTAIN ALL FIBROUS MATERIALS TO MINIMIZE RELEASE OF ABSORBIBLE FIBER WHILE BEING TRANSPORTED.
30. RESTORE AREAS AND EXISTING WORKS OUTSIDE AREAS OF DEMOLITION TO CONDITIONS THAT EXISTED PRIOR TO BEGINNING OF WORK AND TO MATCH CONDITION OF ADJACENT UNDISTURBED AREAS.
31. USE SOIL TREATMENTS AND PROCEDURES WHICH ARE NOT HARMFUL TO HEALTH, ARE NOT HARMFUL TO PLANTS, AND DO NOT ENDANGER WILDLIFE, ADJACENT WATER COURSES OR GROUND WATER.
32. REMOVE DEBRIS AND LEAVE WORK SITE CLEAN, UPON COMPLETION OF WORK.

EXCAVATION AND GRADING

1. REFER TO ENVIRONMENTAL PROPERTY ASSESSMENT, PORT BURWELL AUTOMATION BUILDING AT THE PORT BURWELL SMALL CRAFT HARBOUR, PORT BURWELL, ONTARIO PREPARED BY SNC-LAVALIN INC., DATED MARCH 2015.
2. PROVIDE AND MAINTAIN SEDIMENTATION CONTROL FENCING ALL AROUND SITE.
3. CLEAR AND GRUB ALL EXISTING VEGETATION AND TREES WITHIN FENCED AREA.
4. COMPLETE ALL EXCAVATION NECESSARY TO REMOVE ALL FOUNDATION, CONCRETE PADS, BURIED SERVICES AND STRUCTURES.
5. REMOVE AND DISPOSE OF EXISTING FLOOR SLAB AND SUBGRADE TO MINIMUM 600 MM BELOW TOP OF SLAB.
6. AFTER THE REMOVAL OF THE STRUCTURE, WHERE FILLING IS REQUIRED OF THE RESULTING TRENCH HOLE OR PIT BACKFILL TO THE REQUIRED GRADE USING THE EXCAVATED MATERIAL IS SUITABLE AND MOISTENED MATERIALS AS REQUIRED. BACKFILL MATERIAL SHALL BE CLEAN FILL PLACED IN LAYERS NOT EXCEEDING 150 MM AND SHALL BE COMPACTED ACCORDING TO THE REQUIREMENTS OF OPEL SOIL.
7. LEAVE ALL EXCAVATED MATERIAL ON SITE FOR FUTURE SOIL REMEDIATION.
8. LEAVE WORK SITE CLEAN UPON COMPLETION OF WORK.

Legend

2
A100 A100
BUILDING SECTION
1:50BUILDING DEMOLITION PLAN
1:50LOCATION MAPS
NTSSITE DEMOLITION PLAN
1:50

Public Works and
Government Services Canada
Architectural and Engineering Services
Ontario Region
Travaux publics et
Services gouvernementaux Canada
Services d'architecture et de génie
Région de l'Ontario

Revisions Date