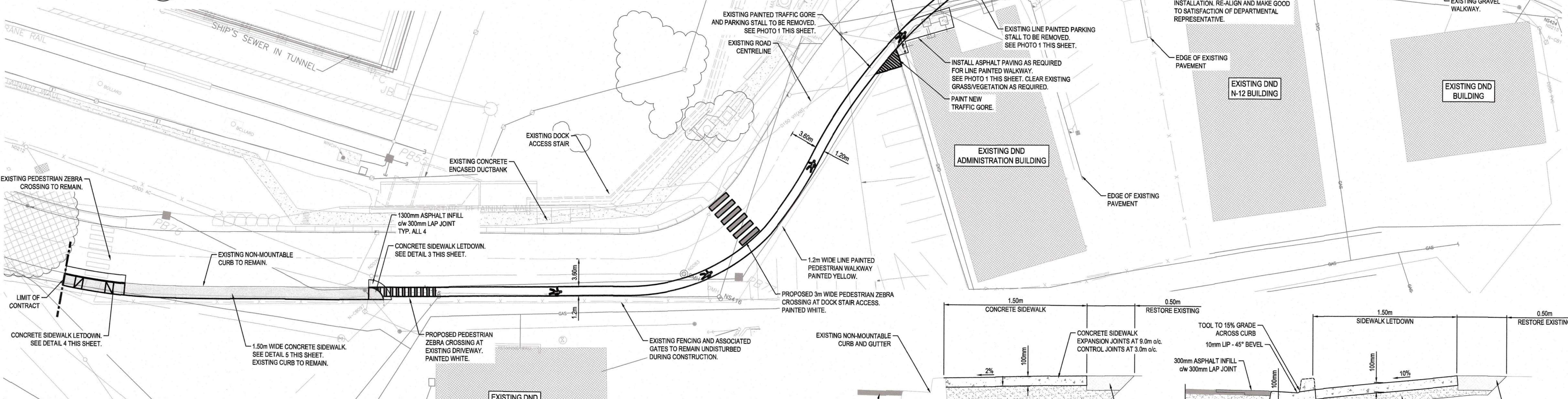


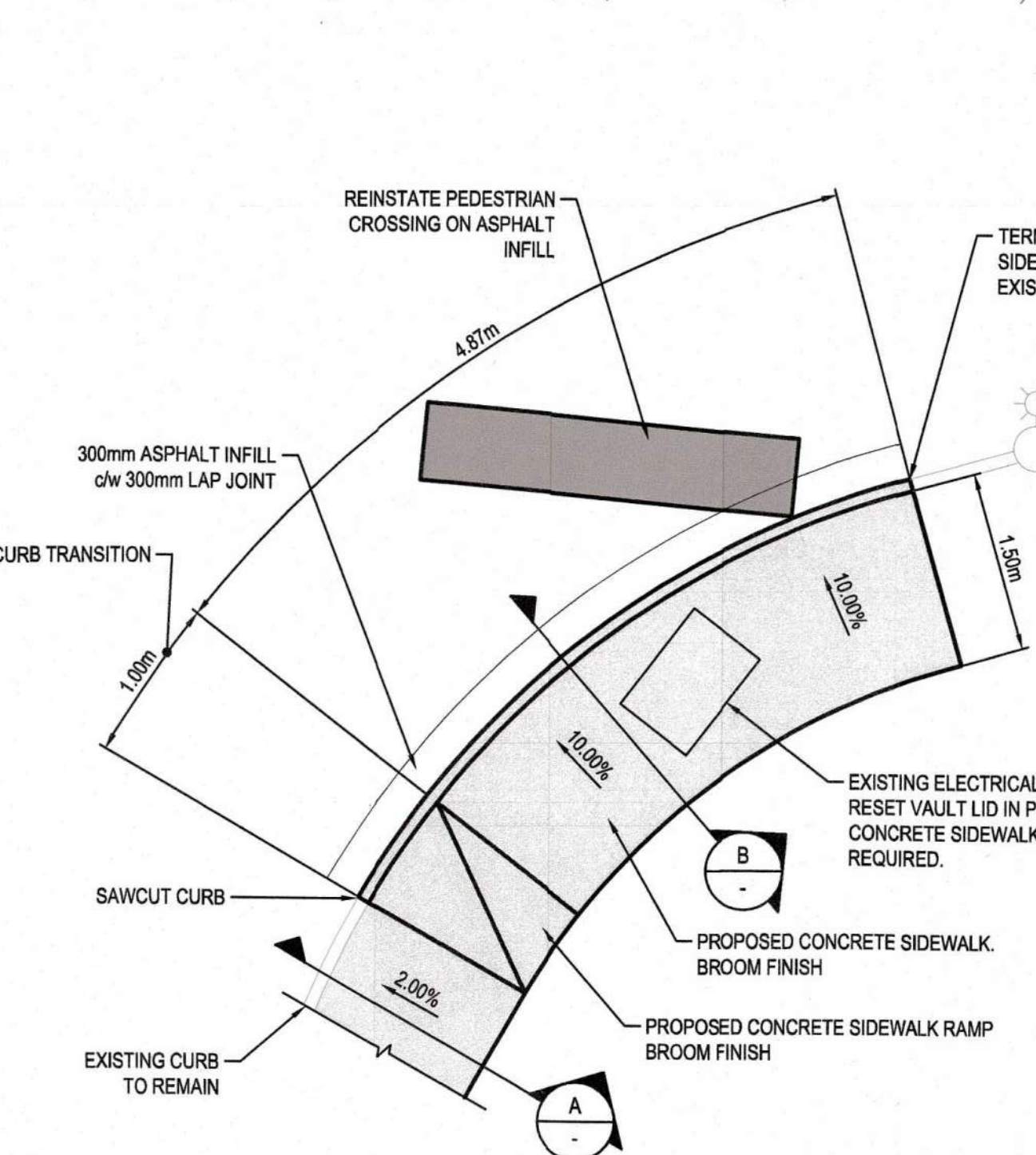
P1 DETAIL AT BUILDING CORNER
SCALE: NTS



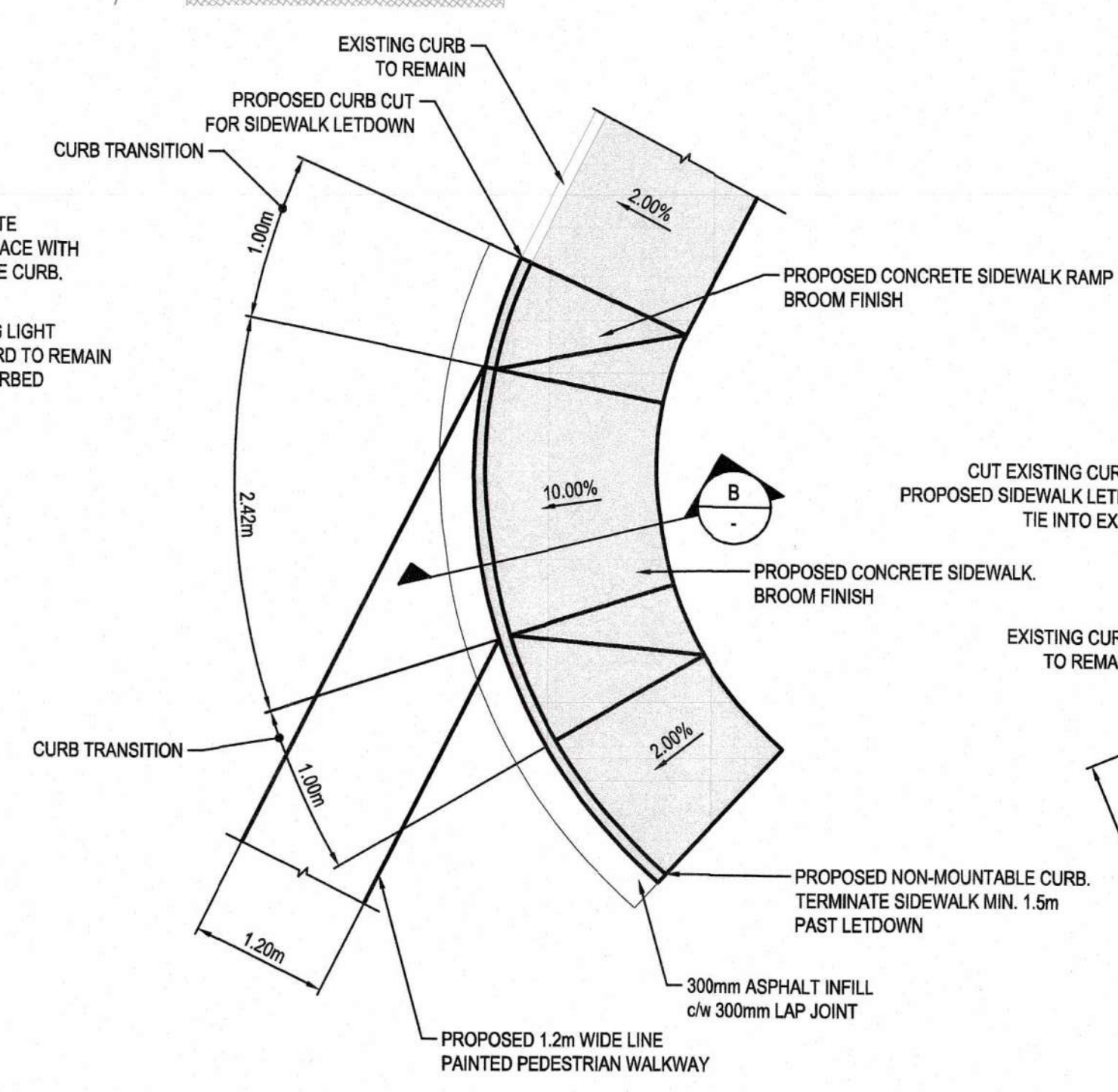
SITE PLAN
SCALE: 1:250

A CONCRETE SIDEWALK
SCALE: 1:20

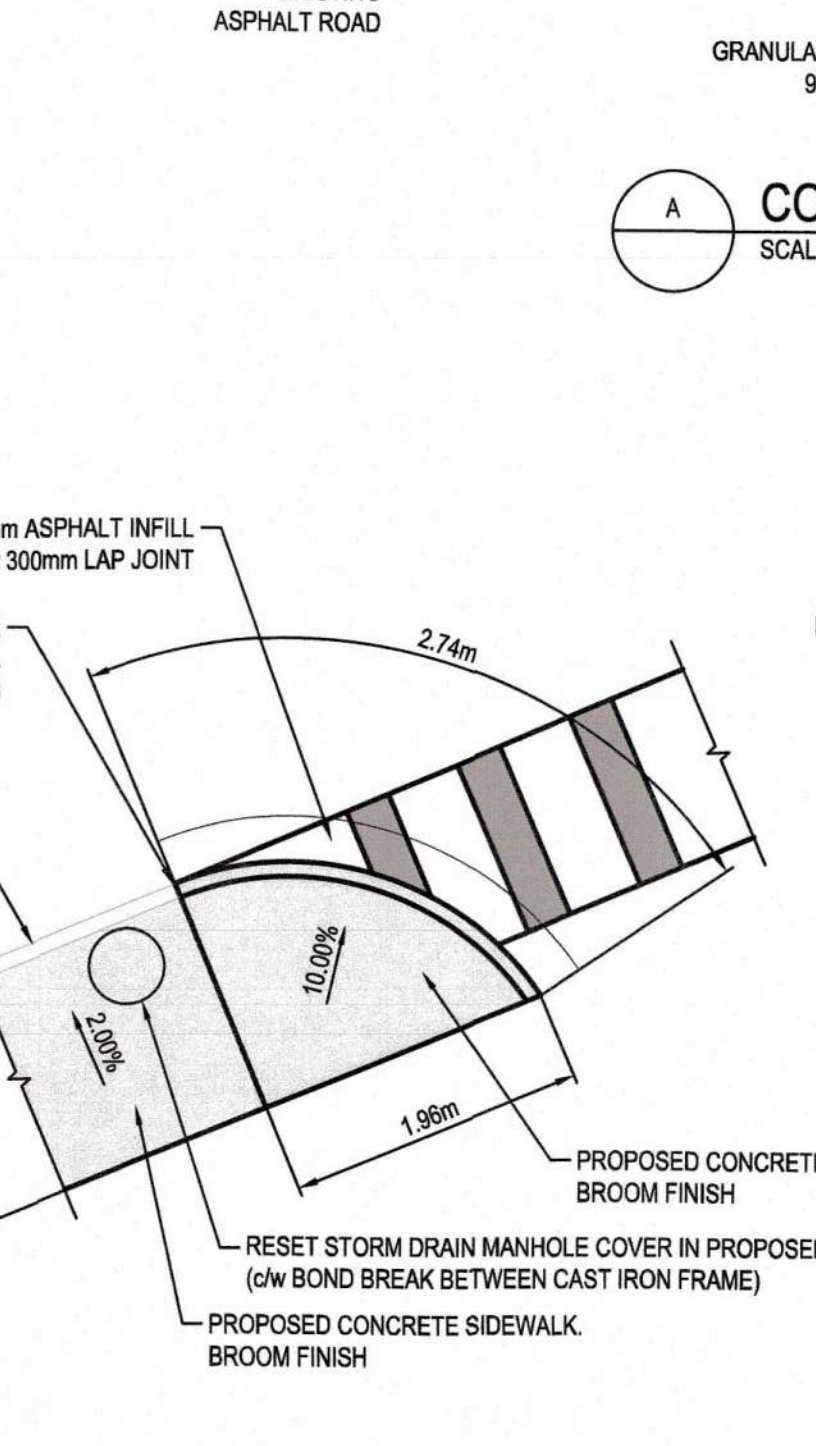
B SECTION THROUGH LETDOWN
SCALE: 1:20



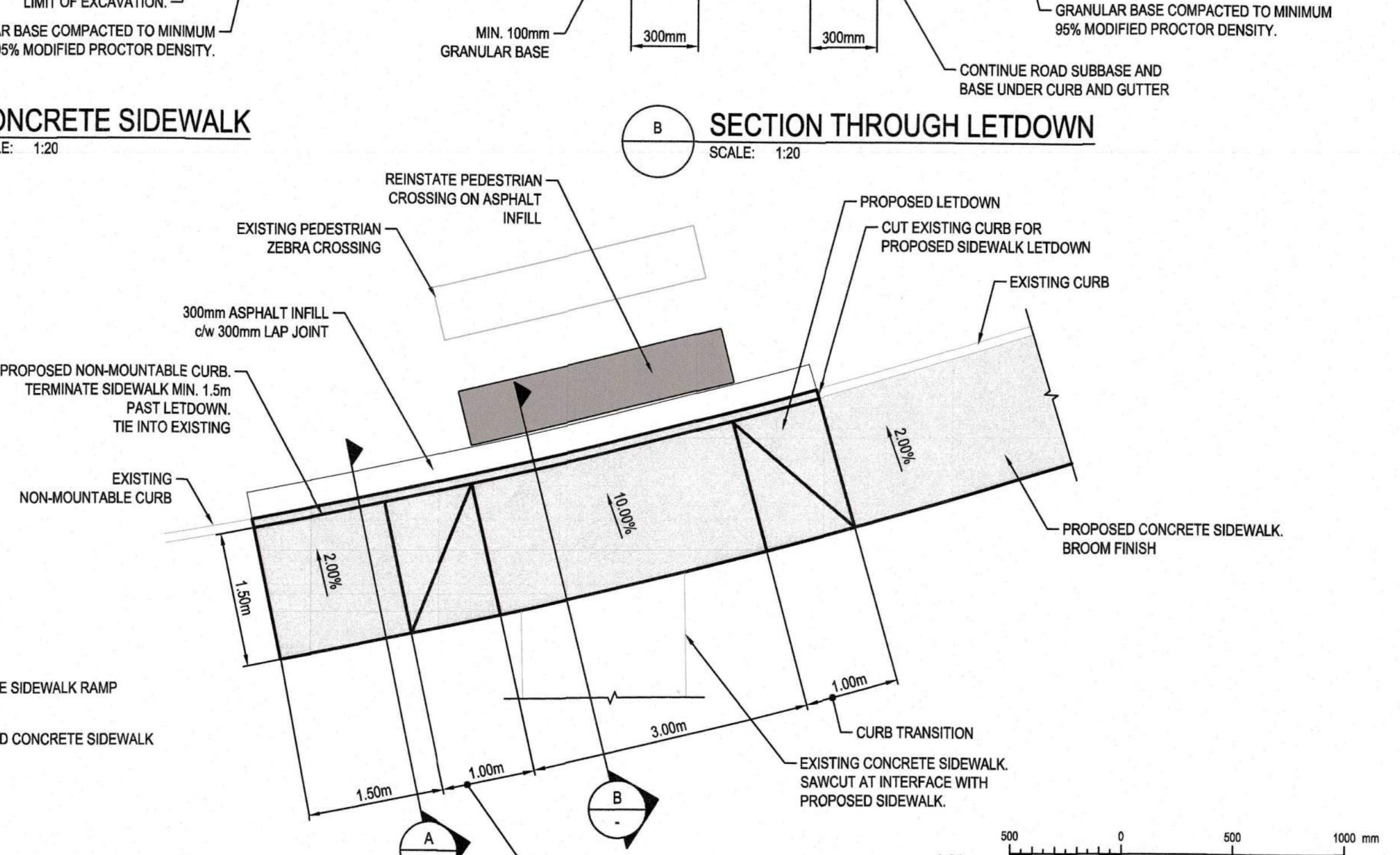
1 SIDEWALK LETDOWN
SCALE: 1:50



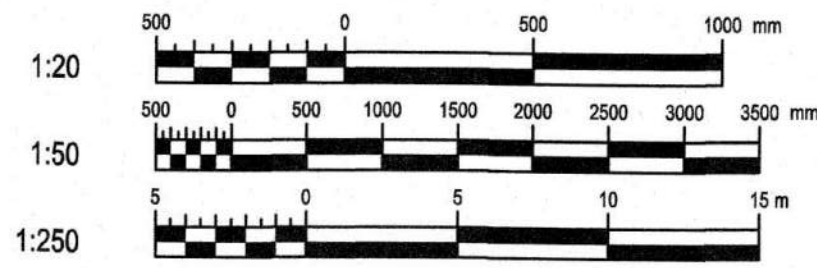
2 SIDEWALK LETDOWN
SCALE: 1:50



3 SIDEWALK LETDOWN
SCALE: 1:50



4 SIDEWALK LETDOWN
SCALE: 1:50



Public Works and Government Services Canada / Travaux publics et Services gouvernementaux Canada

REAL PROPERTY SERVICES
Pacific Region
SERVICES IMMOBILIERS
Région de Pacifique

KEY PLAN

wsp

PROJECT NUMBER: 171-06146-02

PROFESSIONAL ENGINEER
S. COLE
DEC 11, 2017

2	ISSUED FOR TENDER	2017-12-14
1	ISSUED FOR 90% DESIGN REVIEW	2017-11-21
0	ISSUED FOR 80% DESIGN REVIEW	2017-11-03

Revision Sequence Description/Description Date/Date

Client/client

PUBLIC WORKS AND GOVERNMENT SERVICES CANADA (PWGSC)

825 ADMIRALS ROAD
VICTORIA, BC

Project Title/Titre du projet
ESQUIMALT GRAVING DOCK

PEDESTRIAN WALKWAY AT SOUTH ACCESS ROAD

Consultant Signature Box Only

S. COLE
Designed by/Concept par / Approved by/Approuvée par

S. COLE

S. GAGNON
Drawn by/Designé par

JON SISKIA
PWGSC Project Manager/Administrateur de Projets TPSGC

PREETIPAL PAUL
PWGSC Regional Manager, Architectural and Engineering Services / Gestionnaire régionale, Services d'architecture et de génie, TPSGC

Drawing Title/Titre du dessin
SOUTH ACCESS WALKWAY SITE PLAN

Project No./No. du projet: R.091152.001
Sheet/Feuille: 1000
Revision no./La Révision no.: 2
1 OF 1