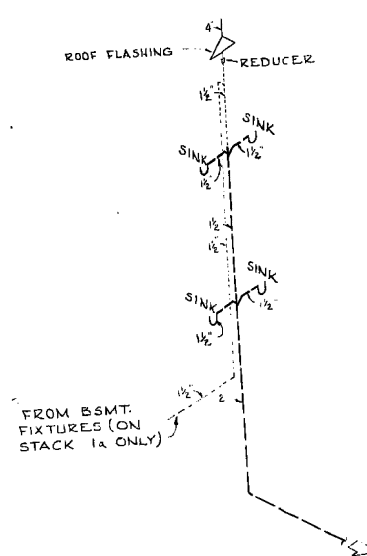
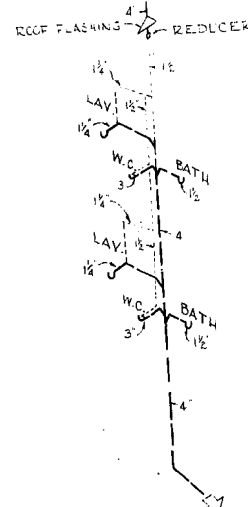


MINISTÈRE DES AFFAIRES INDIENNES ET DU NORD CANADIEN
DIRECTION DES PARCS NATIONAUX ET DES LIEUX HISTORIQUES DIVISION DU GÉNIE ET DE L'ARCHITECTURE

[illegible]

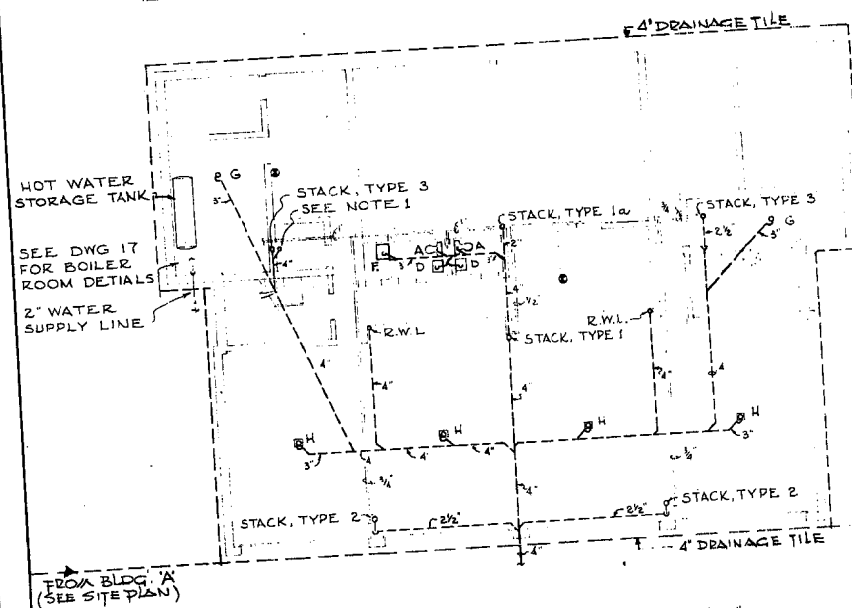
STACK 2

ISOMETRIC STACK DETAILS

- ## RIPING LEGEND

SOIL & WASTE PIPE
VENT PIPE
UNDERGROUND WATER SERVICE
COLD WATER
HOT WATER

FIXTURE SCHEDULE			
CODE	FIXTURE	SUPPLIES	TRAP
A	WATER CLOSET	3/8	3"
G	BATH TUB	1/2"	1 1/2"
C	LAV. BASIN (COUNTER TOP)	3/8	1 1/4"
D	LAV. BASIN (WALL HUNG)	3/8	1 1/2"
E	SINK (KITCHEN)	1/2"	2"
F	SINK (JANITORS)	—	3"
G	FLOOR DRAIN	—	3"
H	FLOOR DRAIN (WITH SED. BUCKET)	—	3"



BASEMENT FLOOR PLAN: SCALE: $\frac{1}{8}" = 1'-0"$

[illegible]

DESIGNED BY ÉTABLI PAR	R. G. L.	CHECKED BY VÉRIFIÉ PAR	APP. REC. BY / APP. REC. PAR	APP. BY / APP. PAR
DRAWN BY TRACÉ PAR	R. L.	SCALE AS SHOWN ÉCHELLE	CHIEF ARCHITECT DATE	CHIEF OF DIVISION DATE

PLUMBING PLAN & DETAILS

PROJECT TITLE / TITRE DU PROJET
TWO-8 SUITE APARTMENT BUILDINGS
ROGERS PASS, GLACIER NATIONAL PARK

DATE MAY 1967
REF. NO. / REF. NO.
NWG. 67/H

DESSIN N°
18