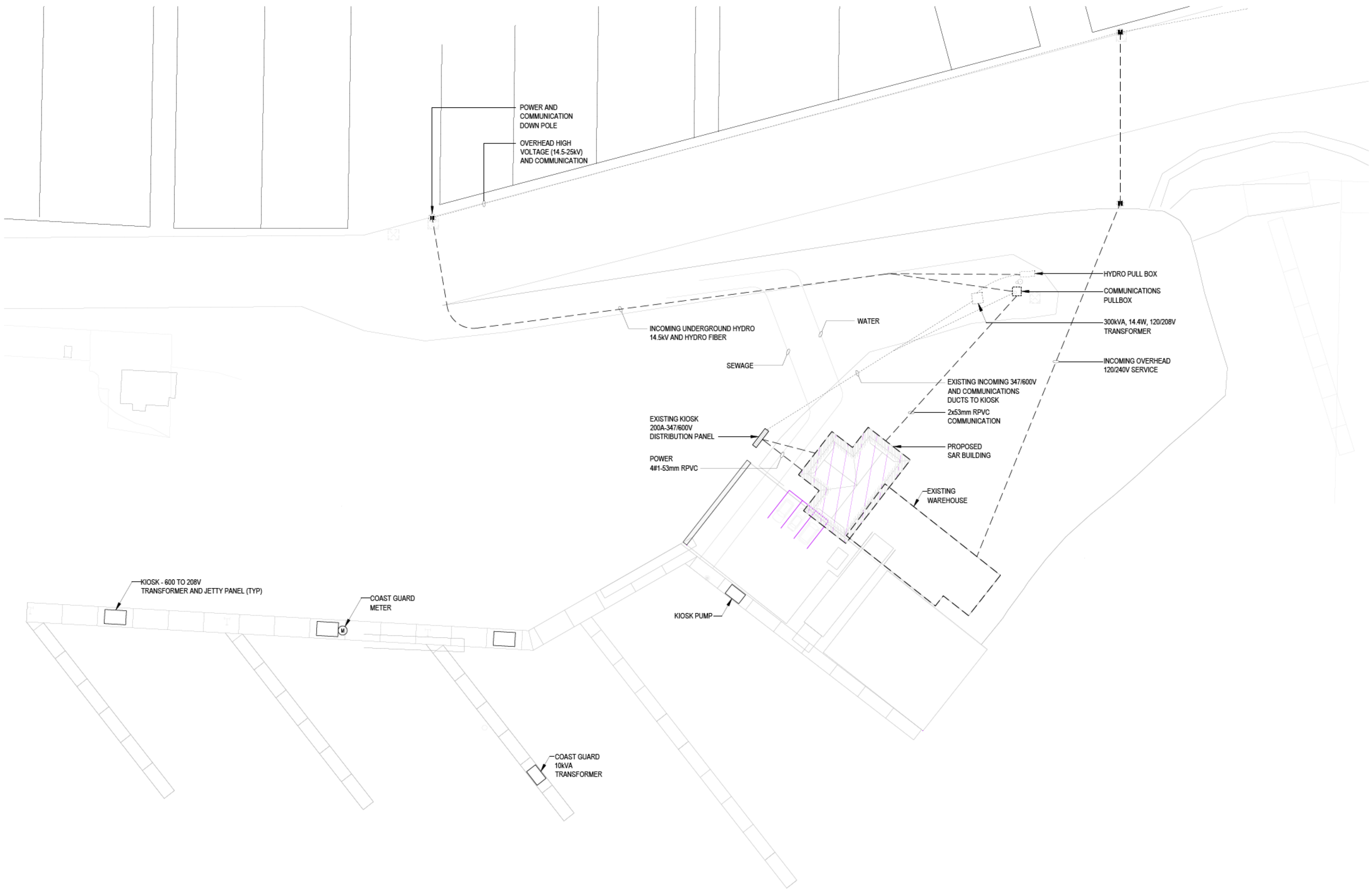


CODE LOAD	
15 PEDESTALS CW 2x30A-1P RECEPTACLES (TOTAL 30) CEC SECTION 78	
4 x 30A-1P (3800W)	= 14.4 kW
4 x 30A-1P (3800W) @ 85%	= 9.4 kW
5 x 30A-1P (3800W) @ 50%	= 9.0 kW
17 x 30A-1P (3800W) @ 25%	= 15.3 kW
	48.1 kW
SAR BOAT TRANSFORMER PUMP 2HP	= 10.00 kW (208V-1PH) = 2.00 kW = 12.00 kW = 166A (208V-3PH)
SAR BUILDING CEC SECTION 8	
1480 SQ FEET x 2.5W / PH	= 3.7 kW
MECHANICAL	= 20.0 kW
OWNER	= 10.0 kW
	33.7 kW = 94A (208V-3PH)
TOTAL LOADS - ON EXISTING 200A-600V SERVICE	
48 kW + 12 kW + 34 kW + 94 kW = 96.6A (600V)	

ELECTRICAL SYMBOL LEGEND	
ABBREVIATIONS	
NOTE	EQUIPMENT SHOWN DOTTED IS EXISTING AND TO REMAIN UNLESS INDICATED OTHERWISE
WP	WEATHER PROOF
LIGHTING	
	SURFACE MOUNTED LUMINAIRE
	SURFACE MOUNTED LUMINAIRE
	RECESSED DOWN LIGHT
SWITCHING	
	SINGLE POLE TOGGLE SWITCH, GANGED AS SHOWN
	DIMMER SWITCH
	THREE WAY TOGGLE SWITCH
	VACANCY SENSOR
	PHOTOCELL
	TIMER
	LUMINAIRE SENSOR
POWER	
	SINGLE RECEPTACLE
	DUPLEX RECEPTACLE
	5-20R DUPLEX RECEPTACLE (T-SLOT)
	ABOVE COUNTER 5-20R GFCI DUPLEX RECEPTACLE (T-SLOT)
	GROUND FAULT INTERRUPTER DUPLEX RECEPTACLE
	ABOVE COUNTER GFCI DUPLEX RECEPTACLE
	WASHER RECEPTACLE
	FRIDGE RECEPTACLE
	MICROWAVE RECEPTACLE
	DRYER RECEPTACLE
	RANGE RECEPTACLE
	KITCHEN EQUIPMENT CONNECTION
	MECHANICAL MOTOR CONNECTION
SECURITY	
	PERIMETER DOOR CONTACT
	FOB
	ELECTRIC STRIKE
	KEY PAD
	120V SMOKE ALARM COMPLETE WITH BATTERY BACKUP
	180° WALL MOUNTED INTRUSION MOTION DETECTOR
	EXTERIOR HORN
COMMUNICATIONS	
	COMBINATION TELEPHONE AND DATA OUTLET, WALL MOUNTED
SINGLE LINE	
	BREAKER
	GROUND
	SERVICE PROVIDER METER
	TRANSFORMER (DRY TYPE)
	TRANSFER SWITCH

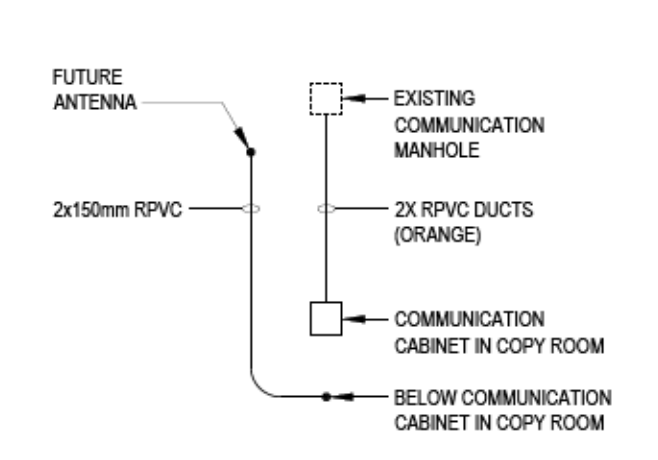


1 REVISED SITE PLAN
E1
1:500

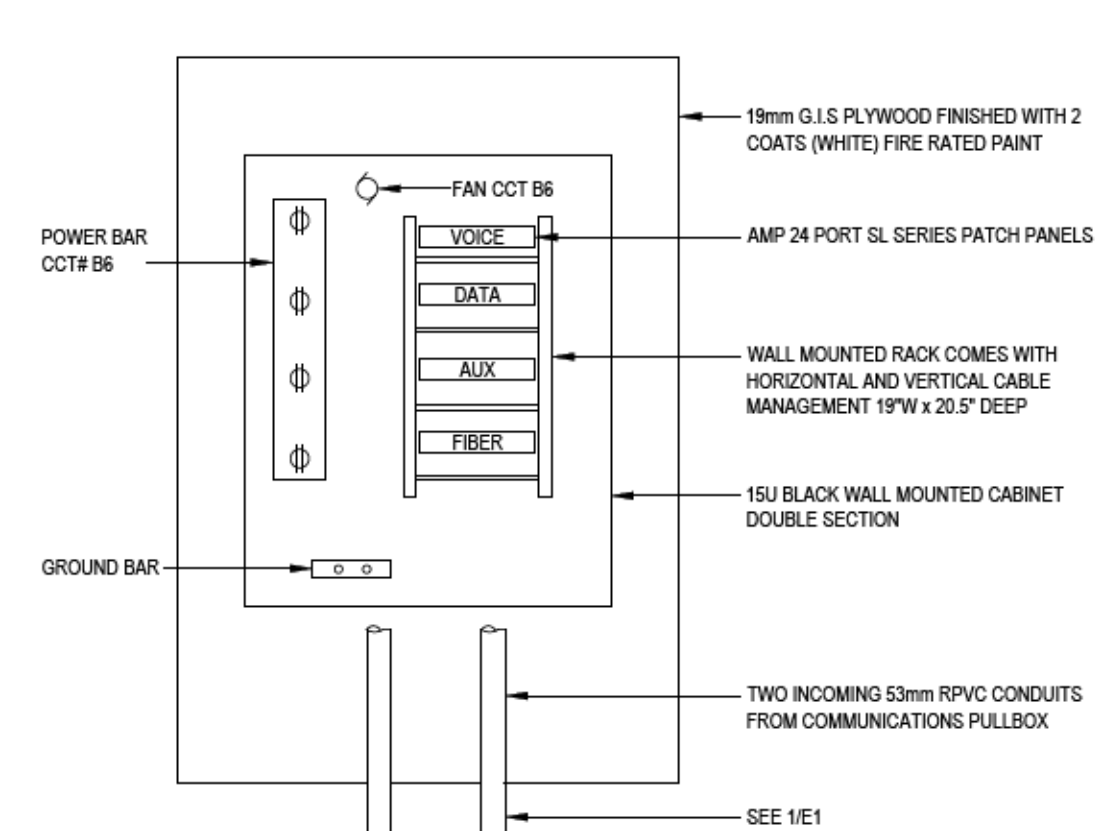


2 FOUNDATION PLAN
E1
1:100

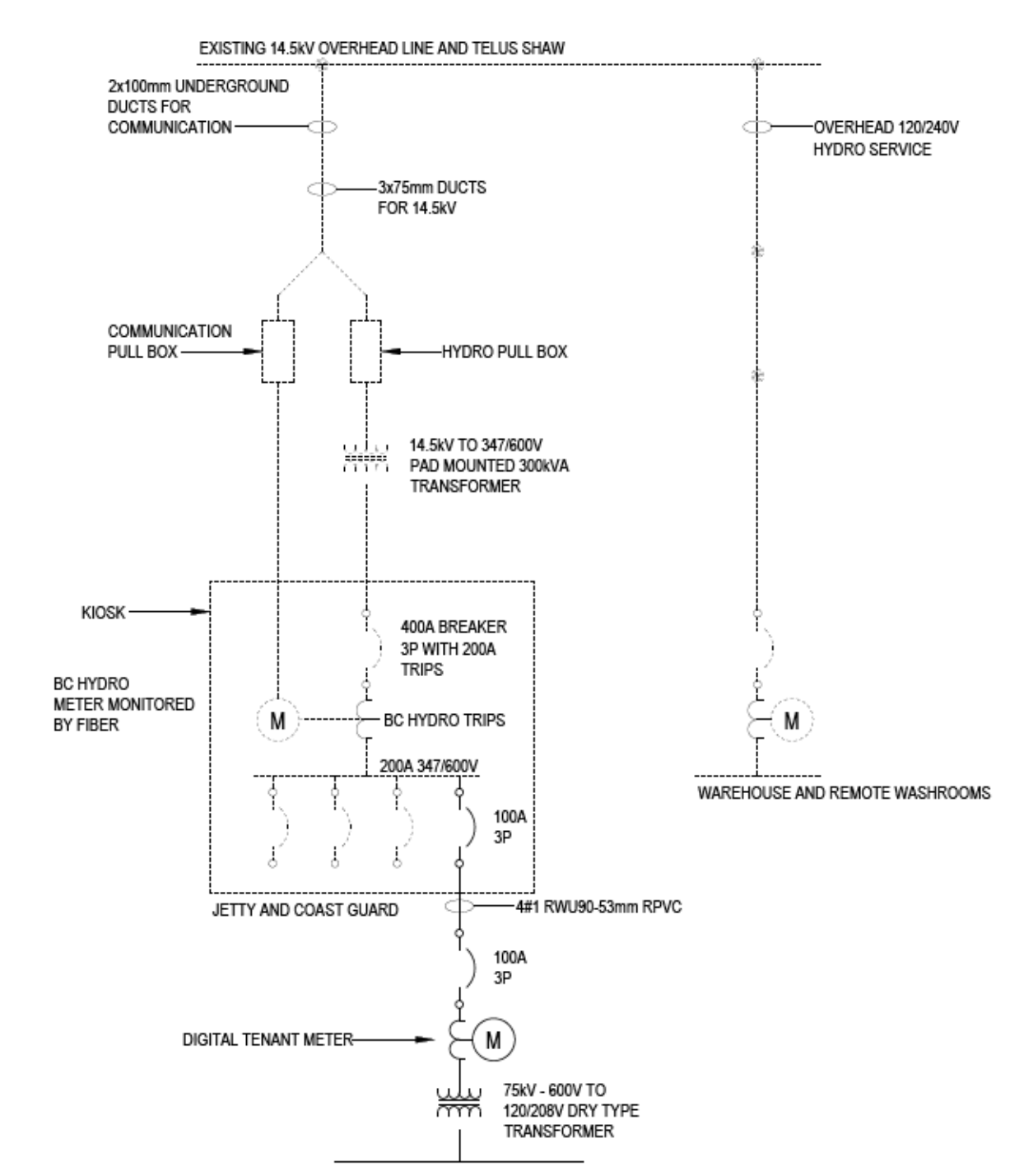
- NOTES:
- CO-ORDINATE POWER WITH MECHANICAL INSTALLATION HEAT TRACE
 - CIRCUIT B9 TO HAVE A LOCK ON BREAKER
 - PROVIDE A BLUE LED LIGHT IN CREW OFFICE AND INTERCONNECT WITH CIRCUIT B9 LIGHT. WILL BE ON UNLESS LOSS OF POWER.



3 COMMUNICATIONS CONDUCT/DUCT RISER
E1
NOT TO SCALE



4 COMMUNICATIONS CABINET
E1
NOT TO SCALE



5 SINGLE LINE DIAGRAM
E1
NOT TO SCALE

Revision/Revision	Description/Description	Date/Date
4	ISSUED FOR TENDER	29/08/17
3	PRE-TENDER REVIEW	02/08/17
2	BUILDING PERMIT	17/07/17
1	60% REVIEW	23/05/17

FISHERIES AND OCEANS,
REAL PROPERTY,
SAFETY AND SECURITY
VANCOUVER, BC
200-401 BURRARD ST.

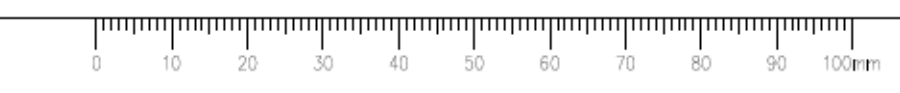
Project title/Titre du projet
4315 MARINE DRIVE
POWELL RIVER, B.C.

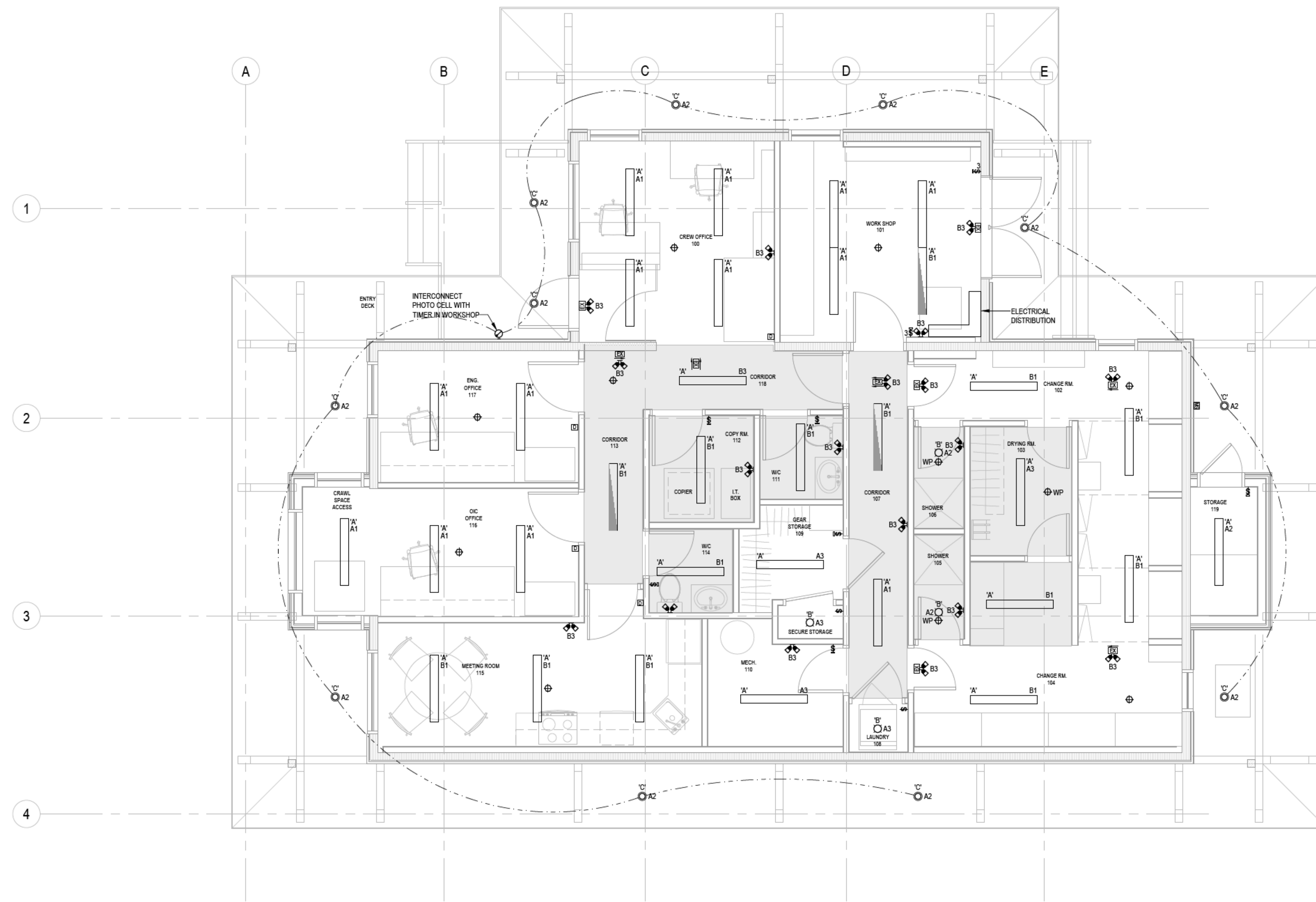
POWELL RIVER
SAR STATION

Consultant Signature Box Only
Designed by/Concept par
CT
Drawn by/Dessiné par
AD
PWGSC Project Manager/Administrateur de Projets TPSSC

PWGSC, Regional Manager, Architectural and Engineering Services/
Gestionnaire régional, Services d'architecture et de génie, TPSSC
PREETIPAL PAUL

Drawing title/Titre du dessin
SITE PLAN, FOUNDATION PLAN,
LEGEND, DETAIL, AND SINGLE LINE
DIAGRAM





4	ISSUED FOR TENDER	29/08/17
3	PRE-TENDER REVIEW	02/08/17
2	BUILDING PERMIT	17/07/17
1	60% REVIEW	23/05/17
Revision/Revision	Description/Description	Date/Date

Client/client
FISHERIES AND OCEANS, REAL PROPERTY, SAFETY AND SECURITY
 VANCOUVER, BC
 200-401 BURRARD ST.

Project title/Titre du projet
4315 MARINE DRIVE POWELL RIVER, B.C.

POWELL RIVER SAR STATION

Consultant Signature Box Only

Designed by/Concept par
CT

Drawn by/Dessine par
AD

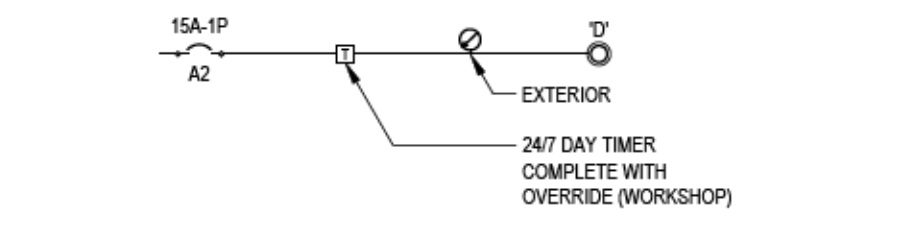
PWGSC Project Manager/Administrateur de Projets TPGSC

PWGSC, Regional Manager, Architectural and Engineering Services / Gestionnaire régionale, Services d'architectural et de génie, TPGSC
PREETIPAL PAUL

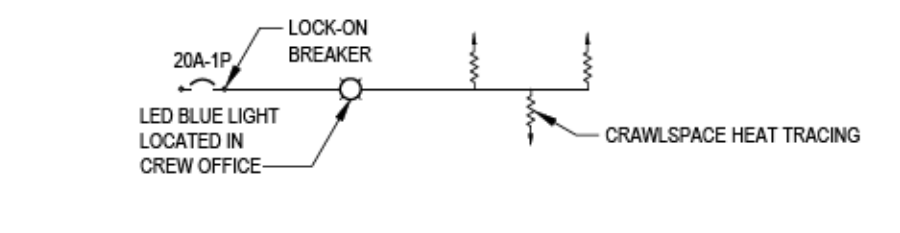
Drawing title/Titre du dessin
LIGHTING LAYOUT, DETAIL, AND LUMINAIRE SCHEDULE

Project No./No. du projet 2016521	Sheet/Feuille E2 OF 3	Revision no./ La Révision no. 4
---	------------------------------------	---

1 LIGHTING LAYOUT
E2 0 1000 2000 3000 1:50

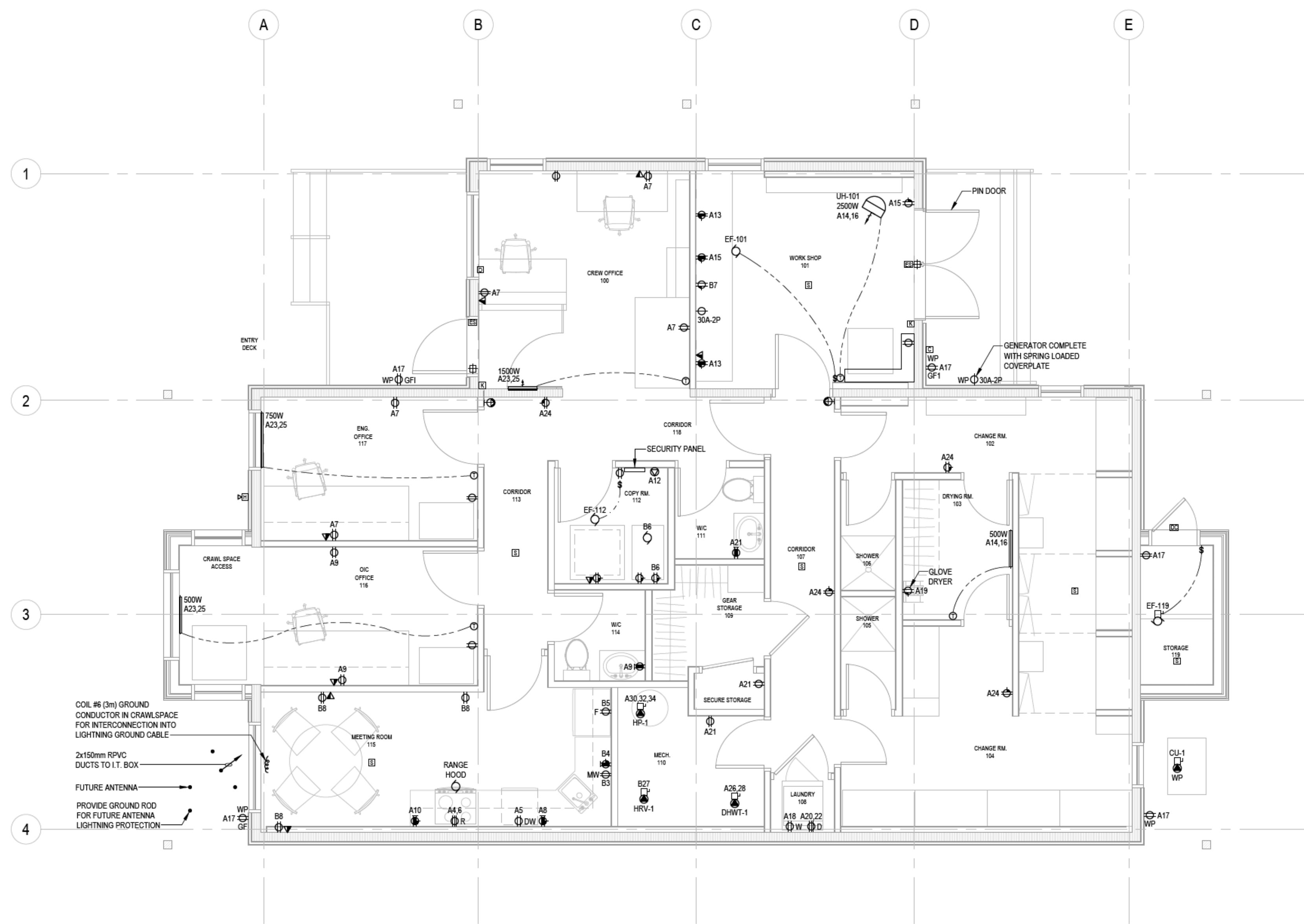


2 EXTERIOR LIGHT CONTROL DETAIL
E2 NOT TO SCALE

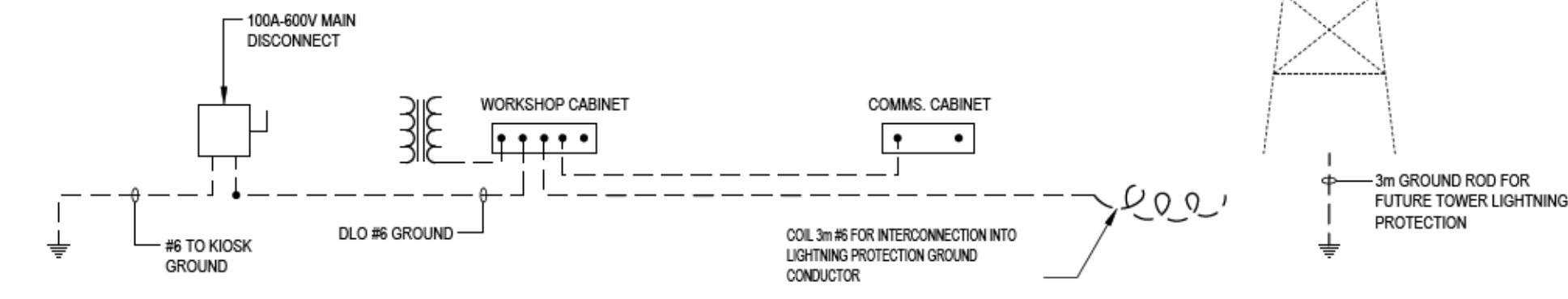


3 HEAT TRACING DETAIL
E2 NOT TO SCALE

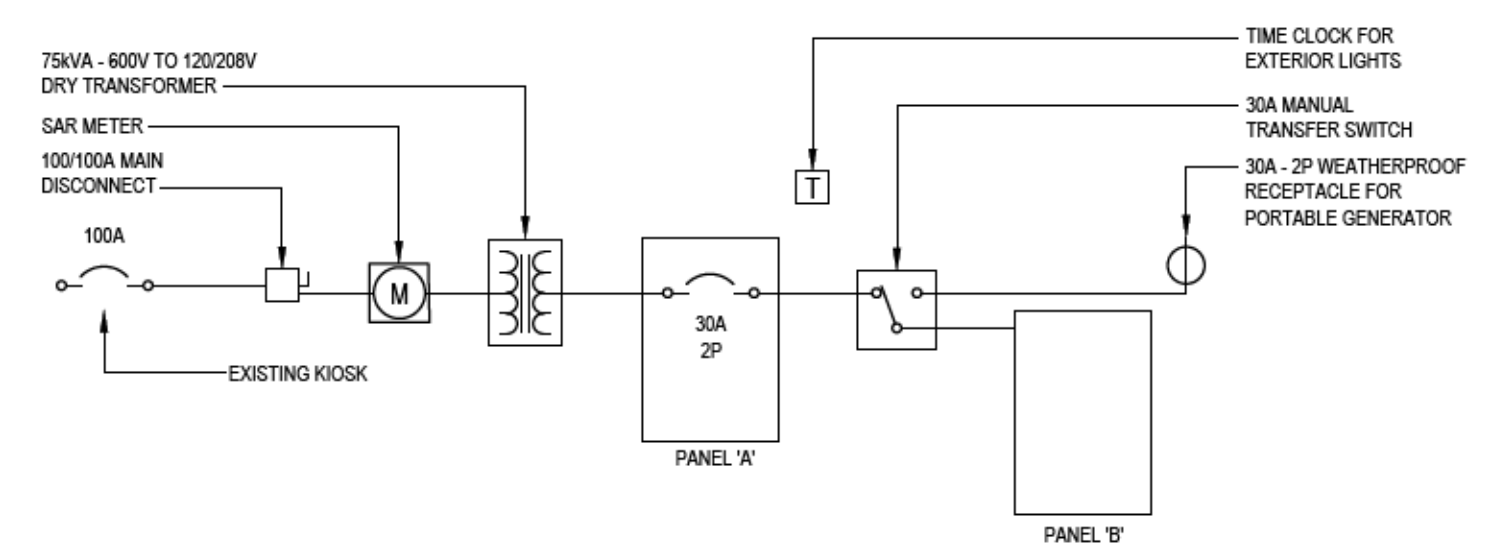
- LUMINAIRE SCHEDULE:
- TYPE 'A' SURFACE AND SUSPENDED 1200mm LONG LED LUMINAIRE COMPLETE WITH FROSTED LENS, 4000 LUMENS, 35K, 120V, 0-10V DIMMING.
 - TYPE 'B' SURFACE LED WITH LOW PROFILE, 35K, 1000 LUMENS, WHITE, WET LOCATION.
 - TYPE 'C' 16W LED, 1500 LUMENS, 3000K, PHILIPS / LIGHTOLIER LYTECASTER SERIES.
 - TYPE 'D' WALL MOUNTED LED MICRO FLOOD LIGHT, 4000K, 120V, BRONZE FINISH COMPLETE WITH MOTION SENSOR.
 - EXIT GREEN PICTORIAL RUNNING MAN WITH EMERGENCY BATTERY BACK-UP AND LIGHTS.
 - EMERGENCY LIGHTS - 2x LED HEADS WITH Ni-CAD BATTERY DELIVERING 90 MIN CAPACITY.



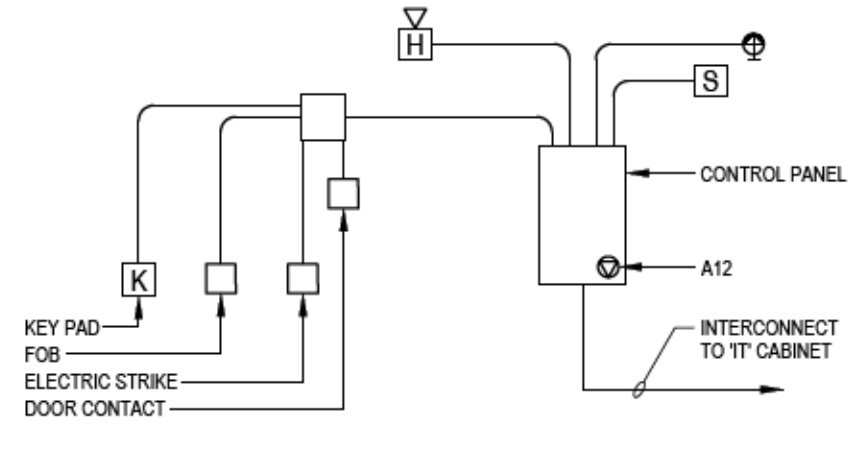
1 POWER LAYOUT
E3 NOT TO SCALE



2 GROUNDING DETAIL
E3 NOT TO SCALE



3 DISTRIBUTION DETAIL
E3 NOT TO SCALE



4 SECURITY RISER
E3 NOT TO SCALE

NOTES:
1. ELECTRIC STRIKE AT CREW OFFICE TO BE HORIZONTAL MOUNTED. ELECTRIC STRIKE AT WORKSHOP TO BE MOUNTED IN HEAD OF DOOR AT LATCH END.

- SMOKE ALARMS:**
- STORAGE
 - MEETING ROOM
 - WEST CORRIDOR
 - EAST CORRIDOR
 - CHANGE ROOM
 - CRAWLSPACE
- SECURITY ZONES:**
- WORKSHOP ENTRANCE
 - CREW OFFICE ENTRANCE
 - STORAGE DOOR
 - WEST CORRIDOR MOTION SENSOR
 - EAST CORRIDOR MOTION SENSOR

Q#	DESCRIPTION	EQUIPMENT LOCATION	LOAD			PHASE	UNIT	STARTER			DISC.	CONTROL			SUPPLY PANEL			WIRE & CONDUIT			NOTE										
			MCA	KW	HP			VOLTS	SUPPLY	MOUNT		CONNECT	TYPE	SUPPLY	MOUNT	CONNECT	TYPE	PANEL #	PANEL LOCATION	AMPS		POLE	CCT NOS	WIRE SIZE	CONDUIT SIZE (mm)	TOTAL AMPS					
HP-1	SPLIT HEATER PUMP INDOOR	110	-	-	-	208	3	M	M	F	M	M	F	F	F	E	F	M	M	M	-	A	-	30	3	-	10	4	-	-	-
CU-1	SPLIT HEATER PUMP OUTDOOR	OUTSIDE	-	-	-	208	3	M	M	F	M	M	F	F	F	E	F	M	M	M	-	A	-	30	3	-	10	4	-	-	-
HRV-1	HEAT RECOVERY VENTILATION	110	-	0.5	-	120	1	M	M	F	E	E	E	SS	E	E	E	M	M	M	-	A	-	15	1	-	12	2	-	-	-
EF-101	WORKSHOP EXHAUST FAN	101	-	-	FRAC	120	1	M	M	E	E	E	E	SS	E	E	E	-	-	-	-	A	-	15	1	-	12	2	-	-	-
EF-112	COPY ROOM EXHAUST FAN	112	-	-	FRAC	120	1	M	M	E	E	E	E	SS	E	E	E	-	-	-	-	A	-	15	1	-	12	2	-	-	-
UH-101	WORKSHOP UNIT HEATER	101	-	2.5	-	208	1	M	M	E	E	E	E	SS	E	E	E	E	E	E	T	A	-	15	2	-	12	3	-	-	2
HWT	DOMESTIC HOT WATER TANK	110	-	4.5	-	208	1	M	M	E	-	-	-	-	E	E	E	-	-	-	-	A	-	30	2	-	10	3	-	-	-
FF-100	ENTRANCE FORCE FLOW HEATER	100	-	1.5	-	208	1	M	M	E	-	-	-	-	E	E	E	E	E	E	T	A	-	15	2	-	12	2	-	-	3
BB-103	DRYING ROOM HEATER	103	-	0.5	-	120	1	M	M	E	-	-	-	-	E	E	E	E	E	E	T	A	-	15	2	-	12	2	-	-	3
-	HEAT TRACING	CRAWLSPACE	-	-	-	120	1	M	M	E	-	-	-	-	-	-	-	-	-	-	-	A	-	15	1	-	12	2	-	-	1

LEGEND
M = DENOTES BY MECHANICAL CONTRACTOR
E = DENOTES BY ELECTRICAL CONTRACTOR
T = THERMOSTAT
SS = MAGNETIC STARTER WITH START-STOP SELECTOR

NOTES
1. CO-ORDINATE POWER WITH MECHANICAL INSTALLATION HEAT TRACE.
2. STARTER TO BE COMPLETE WITH RELAY AND INTERCONNECTED WITH THERMOSTAT.
3. PROVIDE LOW VOLTAGE THERMOSTAT.

PANELBOARD SCHEDULE	
JOB NO./NAME	1-16-104 POWELL RIVER
PANEL	PANEL 'B'
SYSTEM	120/208V - 208(240V), 1Ø
TYPE	NLAB
LOCATION	WORKSHOP SURFACE
MOUNTING	SURFACE
NO. CIRCUITS	12
BUS SIZE	-
SYM. FAULT RATING	30A
OPERATE ON EMERGENCY GENERATOR (6kW)	
DESCRIPTION	BRK POLE CCT CCT POLE BRK DESCRIPTION
LIGHTS	15 1 01 02 1 15 EMERGENCY LIGHTS
MICROWAVE	15 1 03 04 1 20 15/20A RECEPTACLES
FRIDGE	15 1 05 06 1 15 I.T. BOX
15/20 RECEPTACLES	20 1 07 08 1 15 RECEPTACLES
PIPE TRACING	15 1 09 10 1 15
	11 12 1 15
* GFCI Breaker ** Arc Fault Breaker	
PANEL CW - A - P MAIN BREAKER	

PANELBOARD SCHEDULE	
JOB NO./NAME	1-16-104 POWELL RIVER SAR
PANEL	PANEL 'A'
SYSTEM	120/208V, 3Ø, 4W
TYPE	NLAB
LOCATION	WORKSHOP SURFACE
MOUNTING	SURFACE
NO. CIRCUITS	42
BUS SIZE	200A
SYM. FAULT RATING	10,000
DESCRIPTION	BRK POLE CCT CCT POLE BRK DESCRIPTION
LIGHTS	15 1 01 02 1 15 LIGHTS
LIGHTS	15 1 03 04 2 50 STOVE
DISHWASHER	15 1 05 06
RECEPTACLES	15 1 07 08 1 20 15/20 RECEPTACLES
RECEPTACLES	15 1 09 10 1 20 15/20 RECEPTACLES
COPIER	20 1 11 12 1 15 FIB DOOR PANEL
15/20 RECEPTACLES	20 1 13 14 2 15 2.5kW UNIT HEATER
15/20 RECEPTACLES	20 1 15 16
EXTERIOR RECEPTACLES	15 1 17 18 1 15 WASHING MACHINE
GLOVE DRYER	20 1 19 20 2 30 DRYER
RECEPTACLES	15 1 21 22
1.7kW, 0.75kW, 0.5kW BASE BOARD	20 2 23 24 1 20 15/20A RECEPTACLES
HRV-1 0.5kW	15 1 27 28
CU-1	30 3 29 30 3 30 HP-1
	31 32
	33 34
	35 36
	37 38
	39 40
	41 42
* GFCI Breaker ** Arc Fault Breaker	
PANEL CW - A - P MAIN BREAKER	

Revision/Revision	Description/Description	Date/Date
4	ISSUED FOR TENDER	29/08/17
3	PRE-TENDER REVIEW	02/08/17
2	BUILDING PERMIT	17/07/17
1	60% REVIEW	23/05/17

**FISHERIES AND OCEANS,
REAL PROPERTY,
SAFETY AND SECURITY**

VANCOUVER, BC
200-401 BURRARD ST.

Project title/Titre du projet
**4315 MARINE DRIVE
POWELL RIVER, B.C.**

**POWELL RIVER
SAR STATION**

Consultant Signature Box Only

Designed by/Concept par
CT

DRAWN by/Dessiné par
AD

PWGSC Project Manager/Administrateur de Projets TFSGC

PWGSC, Regional Manager, Architectural and Engineering Services/
Gestionnaire régionale, Services d'architectural et de génie, TFSGC
PREETIPAL PAUL

Drawing title/Titre du dessin

**POWER LAYOUT, SCHEDULES,
AND DETAILS**

