



JOB No. 131-19106-06



TANK SCHEDULE										
TAG	SERVICE	TYPE	ORIENTATION	VOLUME L / Us gal	DIMENSIONS mm	TOP TAPPINGS # - mm	FRONT TAPPINGS # - mm	MAX. WORKING PRESSURE kPa / psi	HEATING ELEMENTS	NOTES
T-DHW1	BLDG DOMESTIC HOT WATER	ELECTRIC	VERTICAL	285 / 75	OL: 1508 DIA: 610	2 - 20	TOP: NONE MID: NONE BOTTOM: NONE	1035 / 150	2x 4.5kW, NON-SIMULTANEOUS, 208V-3P	1, 2
ET-DHW1	BLDG DOMESTIC HOT WATER	EXPANSION	VERTICAL	10 / 3.2	OL: 381 DIA: 229	20	TOP: NONE MID: NONE BOTTOM: NONE	- / -	-	1

NOTE:  
1. REFER TO SPECIFICATIONS  
2. TAPPINGS ARE FOR PIPE CONNECTIONS. PROVIDE ADDITIONAL TAPPINGS AS REQUIRED FOR SENSORS AND SAFETY VALVES.

HEAT PUMP (SPLIT TYPE) SCHEDULE													
TAG	SERVICE	HEATING		COOLING	INDOOR UNIT						OUTDOOR UNIT		NOTES
		kW / MBH	ELEC kW	SENSIBLE kW / MBH	TYPE	AIR FLOW L/s / cfm	ESP Pa / in	MOTOR HP	VOLTS	PHASE	VOLTS	PHASE	
HP1 CU1	BUILDING HEAT/COOL	10.7 / 36.4	7.2	12.0 / 41	VERTICAL	660 / 1400	125 / 0.5	1/2	208	3	208	3	1, 2, 3, 4

NOTE:  
1. SPLIT AIR CONDITIONING UNIT SUITABLE FOR LOW AMBIENT OPERATION -10°C [14°F].  
2. HEATING SHALL BE RATED AT:  
OAT: 8.3°C [47°F] DB  
EAT: 24.4/16.7°C [76/62°F] DB/WB.  
3. COOLING SHALL BE RATED AT:  
OAT: 30°C [85°F] DB/WB.  
EAT: 24.4/16.7°C [76/62°F] DB/WB.  
4. R-410 REFRIGERANT (HCFC REFRIGERANTS SHALL NOT BE USED).

GRILLE, REGISTER AND DIFFUSER SCHEDULE								
TAG	TYPE	BORDER	MATERIAL	CORE STYLE	LOUVRE ORIENT.	VOLUME DAMPER	FASTENING	FINISH
SR1	SUPPLY REGISTER	NOTE 1	ALUMINIUM	AIRFOIL DOUBLE DEFLECTION	L	YES	SCREW	BAKED ENAMEL, NOTE 2
RG1	RETURN GRILLE	NOTE 1	ALUMINIUM	AIRFOIL LOUVRED FIXED GRILLE	L, 45°, 20mm	NO	SCREW	BAKED ENAMEL, ALUMINIUM
ER1	EXHAUST REGISTER	NOTE 1	ALUMINIUM	12 x 12 x 12 mm EGGCRATE	-	YES	SCREW	BAKED ENAMEL, NOTE 2
TG1	TRANSFER GRILLE	NOTE 1	ALUMINIUM	AIRFOIL LOUVRED FIXED GRILLE	L, 45°, 20mm	NO	SCREW	BAKED ENAMEL, NOTE 2

NOTE:  
1. SURFACE MOUNT.  
2. COLOUR TO ARCHITECT'S CHOICE.

HEAT RECOVERY VENTILATOR (HRV) SCHEDULE										
TAG	SERVICE	AIR FLOW l/s / cfm	EFFECTIVENESS %	STATIC PRESSURE Pa / in	RPM	MOTOR HP	ELECT. DATA			NOTES
							VOLTS	PHASE		
HRV1	BUILDING HRV	130 / 275	51	100 / 0.4	1350	1/3	120	1		1, 2, 3

NOTE:  
1. ACCESSORIES: AIR PROVING SWITCH, DEFROST CYCLE  
2. PLUG-IN POWER  
3. UNIT COMPLETE WITH VIBRATION ISOLATION, FLEXIBLE CONNECTIONS & SEISMIC RESTRAINT

FAN SCHEDULE										
TAG	SERVICE	AIR FLOW l/s / cfm	STATIC PRESSURE Pa / in	SONES	RPM	MOTOR HP	ELECT. DATA			NOTES
							VOLTS	PHASE		
EF101	WORKSHOP EXHAUST FAN	110 / 235	95 / 0.38	6	-	107 W	120	1		1
EF112	COPY ROOM EXHAUST FAN	35 / 75	95 / 0.38	1.4	-	34 W	120	1		1
EF119	STORAGE ROOM EXHAUST FAN	35 / 75	95 / 0.38	1.4	-	34 W	120	1		2

NOTE:  
1. COMPLETE WITH ALUMINUM GRILLE, VIBRATION ISOLATION, FLEXIBLE CONNECTIONS, SPEED CONTROLLER FOR BALANCING, CONTROL DAMPER.  
2. COMPLETE WITH ALUMINUM GRILLE, VIBRATION ISOLATION, FLEXIBLE CONNECTIONS, SPEED CONTROLLER FOR BALANCING.

### LEGEND

**HVAC SYMBOLS:**

- RETURN GRILLE
- EXHAUST GRILLE
- BRANCH DUCT, SIZE AS NOTED
- BRANCH DUCT TO BE REMOVED, SIZE AS NOTED
- SUPPLY AIR DUCT, TOWARD, AWAY
- RETURN AIR, TOWARD, AWAY
- EXHAUST AIR, TOWARD, AWAY
- ROUND DUCT, TOWARD, AWAY
- ROUND DUCT
- RECTANGULAR DUCT, SIDE FACINGxDEPTH
- 25 THICK ACOUSTIC DUCT INSULATION
- DOOR UNDERCUT
- DUCT BREAK
- FIRE DAMPER (HORIZONTAL)

**ABBREVIATIONS:**

- BD BALANCE DAMPER
- CD CONTROL DAMPER
- CV CONTROL VALVE
- DG DOOR GRILLE
- E/A EXHAUST AIR
- EF EXHAUST FAN
- EG EXHAUST GRILLE
- ER EXHAUST REGISTER
- FD FIRE DAMPER
- O/A OUTDOOR AIR
- R/A RETURN AIR
- RG RETURN GRILLE
- S/A SUPPLY AIR
- SG SUPPLY GRILLE
- SR SUPPLY REGISTER
- T/A TRANSFER AIR
- TG TRANSFER GRILLE

**PLUMBING SYMBOLS:**

- FLOOR DRAIN
- HUB DRAIN
- S-TRAP
- PIPE OFFSET UP
- PIPE OFFSET DOWN
- PIPE CAP
- PIPE CONTINUES
- CLEANOUT
- COLD WATER
- HOT WATER
- VENT TO ROOF
- SANITARY PIPING
- PLUMBING VENT
- HEAT TRACE

**FIRE PROTECTION SYMBOLS:**

- FIRE EXTINGUISHER

**ABBREVIATIONS:**

- C COLD WATER
- CO CLEANOUT
- CW CLOTHES WASHER
- DW DISHWASHER
- DSS DOWNSPOUT SHOE
- H HOT WATER
- LB LAVATORY BASIN
- FD FLOOR DRAIN
- FFL FINISHED FLOOR LEVEL
- S SINK
- SAN SANITARY PIPING
- SH SHOWER
- VTR VENT TO ROOF
- WC WATER CLOSET

MECHANICAL DRAWING LIST		
DRAWING NO.	DRAWING NAME	SCALE
M0.01	LEGEND, SCHEDULES & DRAWING LIST	N/A
M1.01	PLUMBING UNDERFLOOR PLAN	1:50
M1.02	PLUMBING MAIN FLOOR PLAN	1:50
M2.01	HVAC MAIN FLOOR PLAN	1:50

C	ISSUED FOR TENDER	2017-08-25
B	ISSUED FOR PERMIT	2017-07-17
A	50% Review	2017-05-23
Revision/Revision	Description/Description	Date/Date

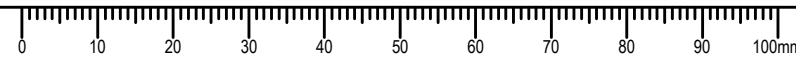
Client/Client  
**FISHERIES AND OCEANS,  
REAL PROPERTY,  
SAFETY AND SECURITY**  
  
VANCOUVER, BC  
200-401 BURRARD ST.

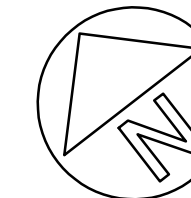
Project title/Titre du projet  
**4315 MARINE DRIVE  
POWELL RIVER, B.C.**  
  
**POWELL RIVER  
SAR STATION**

Consultant Signature Box Only  
  
Designed by/Concept par  
**ASV**  
Drawn by/Dessine par  
**DMM**  
PWGSC Project Manager/Administrateur de Projets TPSGC  
--  
PWGSC, Regional Manager, Architectural and Engineering Services/  
Gestionnaire régionale, Services d'architectural et de génie, TPSGC  
**PREETIPAL PAUL**  
Drawing title/Titre du dessin

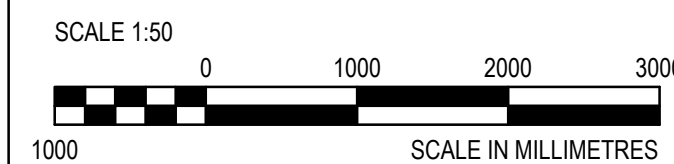
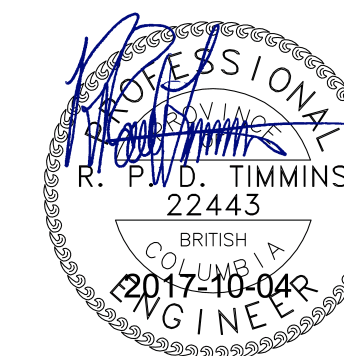
**LEGEND SCHEDULES  
&  
DRAWING LIST**

Project No./No. du projet <b>2016521</b>	Sheet/ Feuille <b>M0.01</b>	Revision no./ La Révision no. <b>C</b>
---	--------------------------------	--





JOB No. 131-19106-06



Revision/Revision	Description/Description	Date/Date
C	ISSUED FOR TENDER	2017-08-25
B	ISSUED FOR PERMIT	2017-07-17
A	60% Review	2017-05-23

Client/Client: FISHERIES AND OCEANS, REAL PROPERTY, SAFETY AND SECURITY

VANCOUVER, BC 200-401 BURRARD ST.

Project title/Titre du projet: 4315 MARINE DRIVE POWELL RIVER, B.C.

POWELL RIVER SAR STATION

Consultant Signature Box Only

Designed by/Concept par: ASV

Drawn by/Dessiné par: DMM

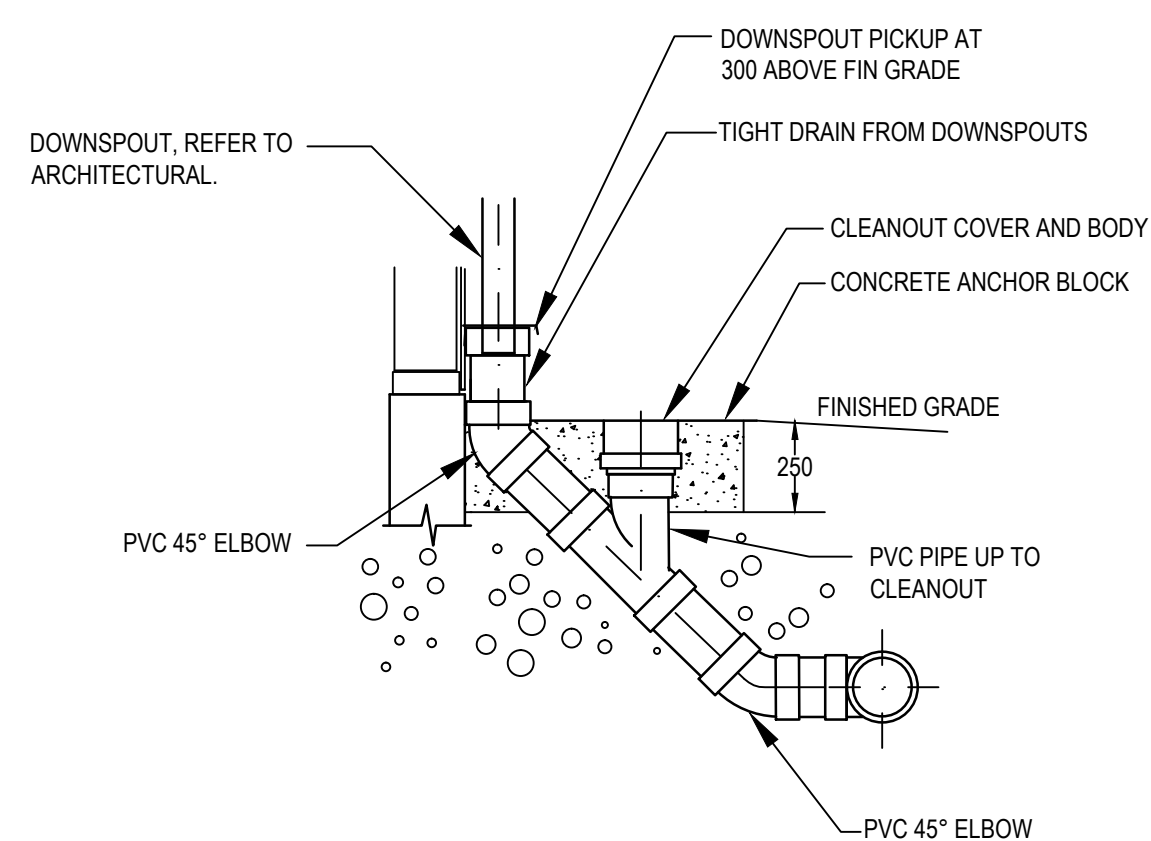
PWGSC Project Manager/Administrateur de Projets TPSGC: -

PWGSC Regional Manager, Architectural and Engineering Services/ Gestionnaire régionale, Services d'architectural et de génie, TPSGC: PREETIPAL PAUL

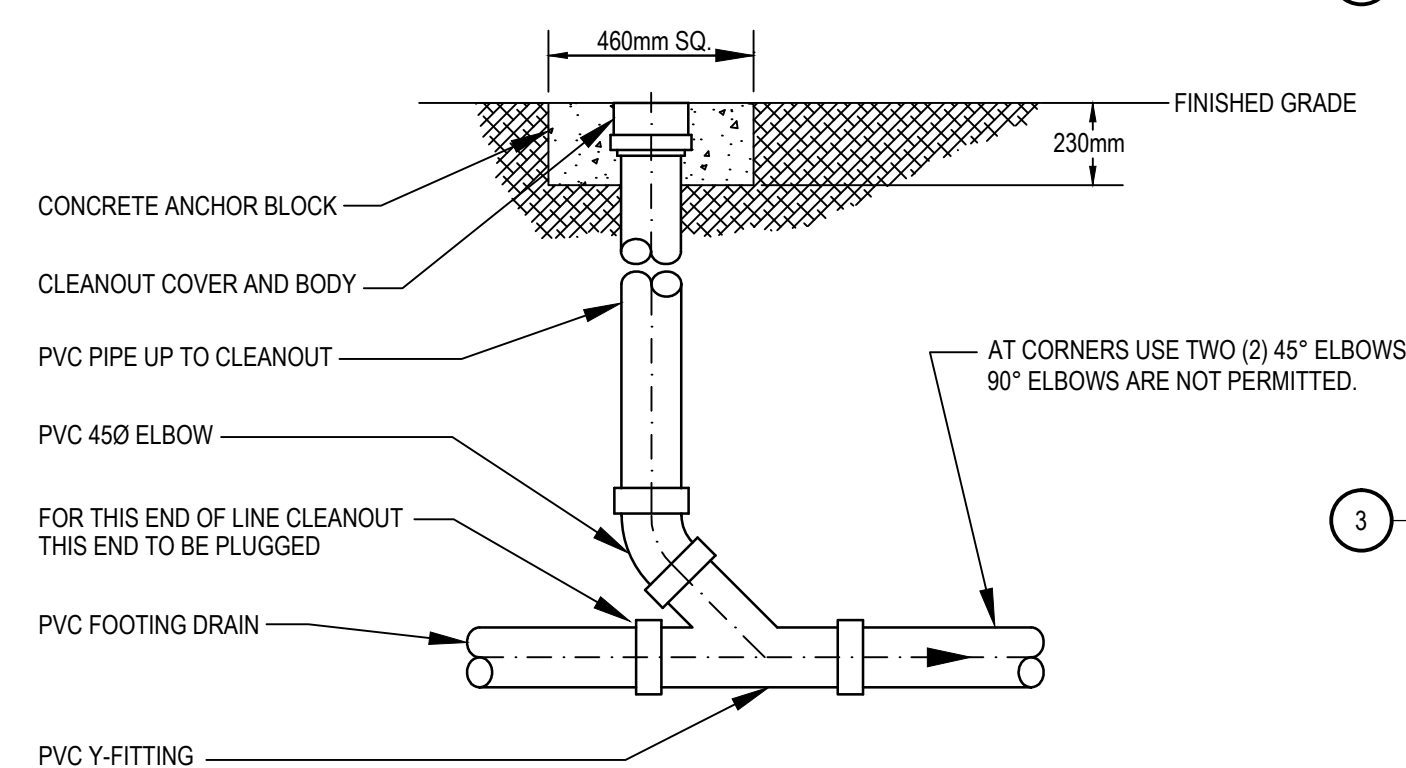
Drawing title/Titre du dessin

PLUMBING UNDERFLOOR PLAN

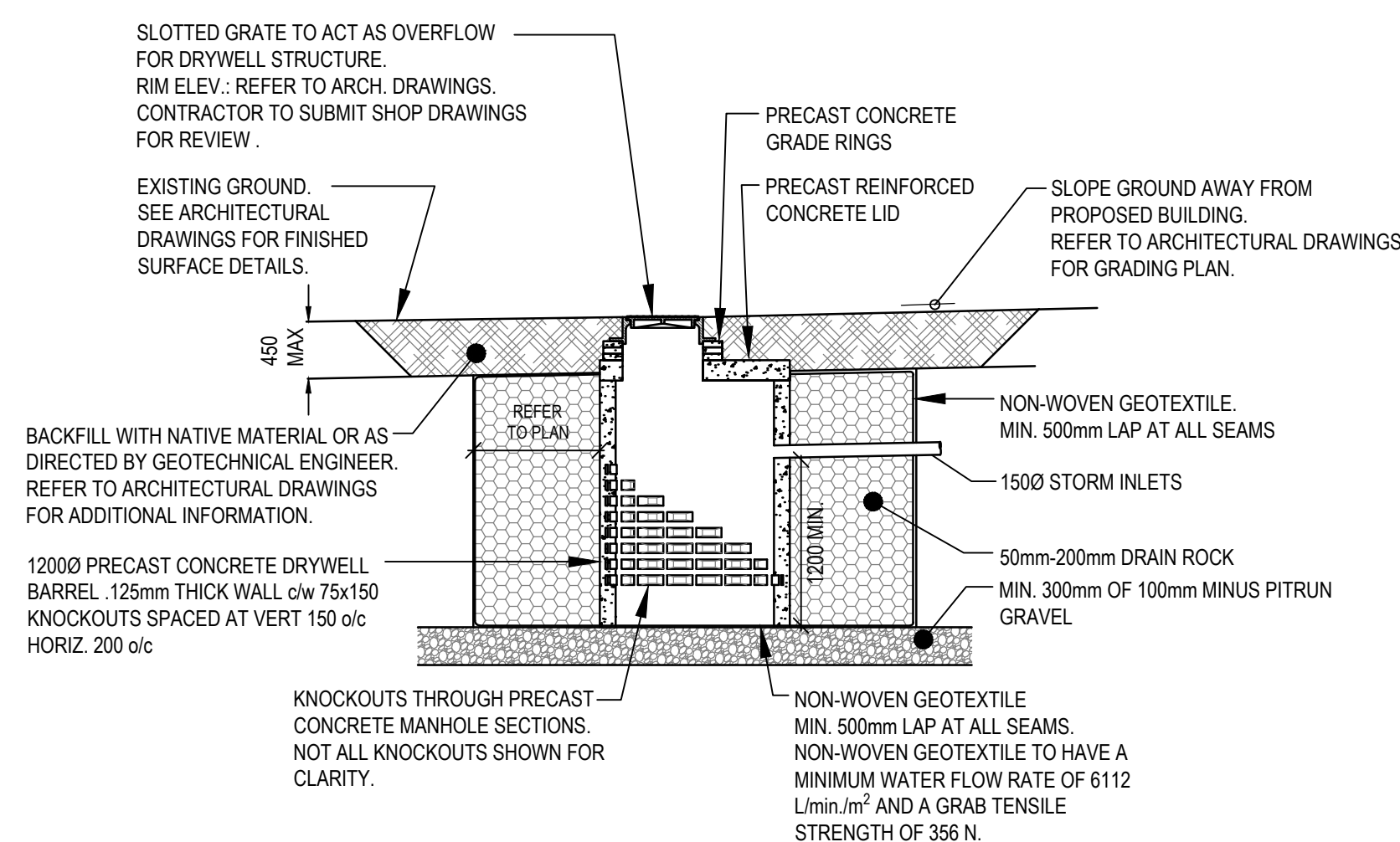
Project No./No. du projet	Sheet/ Feuille	Revision no./ La Révision no.
2016521	M1.01	C



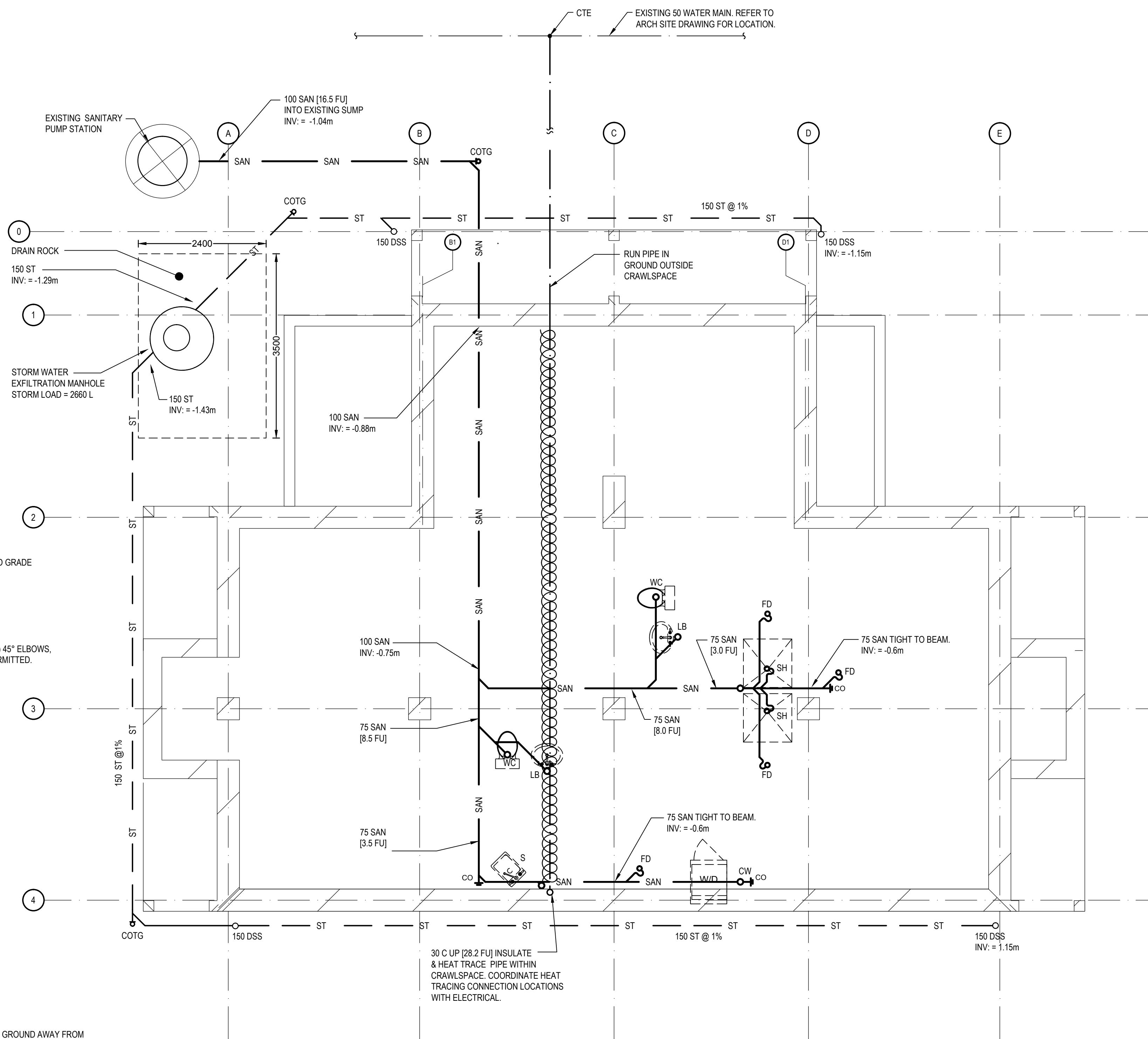
2 DOWNSPOUT AND CLEANOUT M1.01 NTS



3 CLEANOUT TO GRADE M1.01 NTS



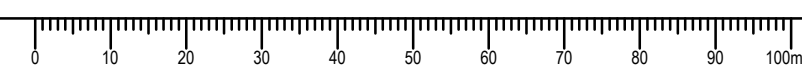
4 STORM WATER EXFILTRATION MANHOLE M1.01 NTS



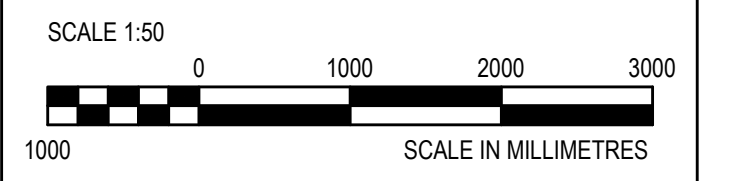
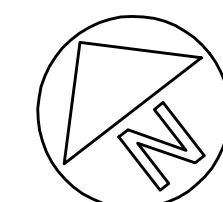
1 FOUNDATION PLAN M1.01 SCALE 1:50

GENERAL NOTES:

1. RUN SAN AT 2% UNLESS OTHERWISE NOTED.
2. INSULATE & HEAT TRACE EACH TRAP IN CRAWLSPACE. COORDINATE HEAT TRACING CONNECTION LOCATIONS WITH ELECTRICAL.
3. ALL INVERTS SHOWN ARE FROM FINISHED FLOOR LEVEL.







C	ISSUED FOR TENDER	2017-08-25
B	ISSUED FOR PERMIT	2017-07-17
A	50% Review	2017-05-23
	Description/Description	Date/Date

**FISHERIES AND OCEANS, REAL PROPERTY, SAFETY AND SECURITY**

VANCOUVER, BC  
200-401 BURRARD ST.

Project title/Titre du projet  
**4315 MARINE DRIVE POWELL RIVER, B.C.**

**POWELL RIVER SAR STATION**

Consultant Signature Box Only

Designed by/Concept par  
**ASV**

Drawn by/Dessiné par  
**DMM**

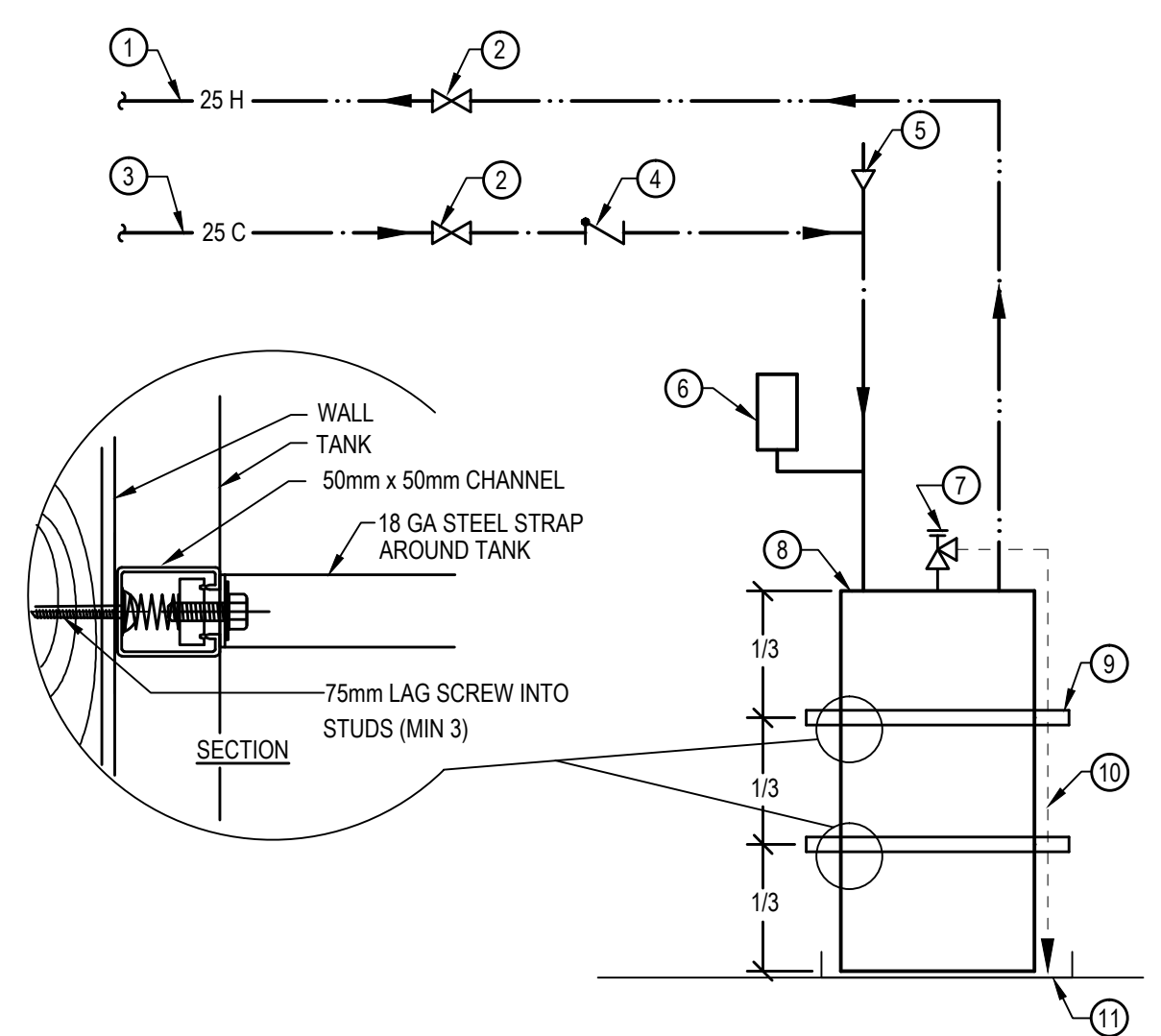
PWGSC Project Manager/Administrateur de Projets TPSGC  
--

PWGSC, Regional Manager, Architectural and Engineering Services/  
Gestionnaire régionale, Services d'architectural et de génie, TPSGC  
**PREETIPAL PAUL**

Drawing title/Titre du dessin

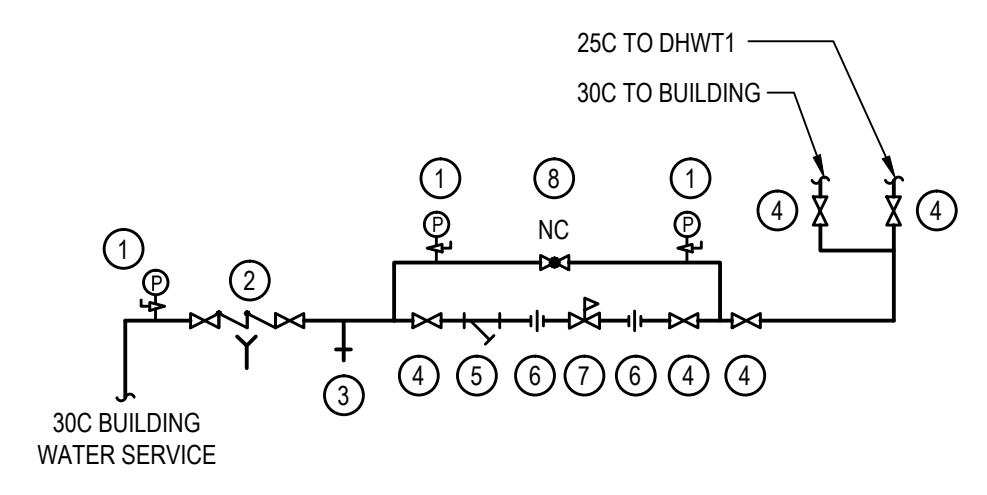
**PLUMBING MAIN FLOOR PLAN**

Project No./No. du projet <b>2016521</b>	Sheet/ Feuille <b>M1.02</b>	Revision no./ La Révision no. <b>C</b>
---	--------------------------------	---



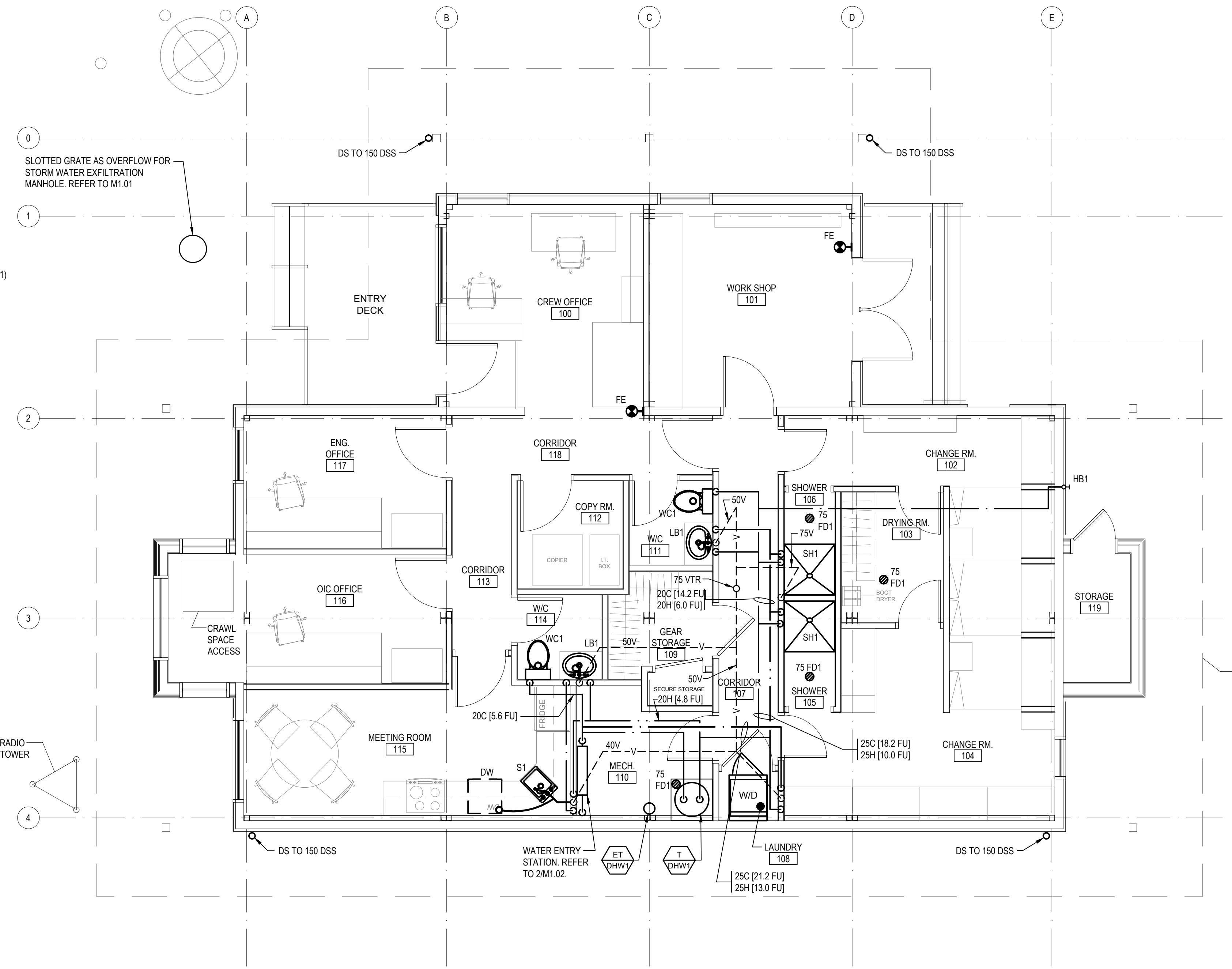
- 1 25 DOMESTIC HOT WATER SUPPLY (17.8 FU)
- 2 VALVE
- 3 25 COLD WATER SUPPLY (17.8 FU)
- 4 CHECK VALVE
- 5 VACUUM RELIEF VALVE
- 6 DIAPHRAGM TYPE PRE-PRESSURIZED EXPANSION TANK, 3 GAL. (ET-DHW1)
- 7 TEMPERATURE & PRESSURE RELIEF VALVE.
- 8 75 GAL. ELECTRIC DOMESTIC HOT WATER TANK (T-DHW1)
- 9 PROVIDE SEISMIC RESTRAINT, ANCHORED TO WALL, TYP.2. (SEE INSET).
- 10 T & P RELIEF DISCHARGES DIRECTLY OVER DRAIN.
- 11 25mm DRAIN PAN, PIPED TO DRAIN

**75 GALLON DHW TANK**  
M1.02 SCALE: NTS



- 1 PRESSURE GAUGE WITH COCK
- 2 DOUBLE CHECK VALVE ASSEMBLY
- 3 HOSE BIBB
- 4 ISOLATION VALVE
- 5 STRAINER
- 6 UNION
- 7 PRESSURE REDUCING VALVE
- 8 GLOBE VALVE (NORMALLY CLOSED)

**2 WATER ENTRY SCHEMATIC**  
M1.02 SCALE: NTS



**1 MAIN FLOOR PLAN**  
M1.02 SCALE: 1:50

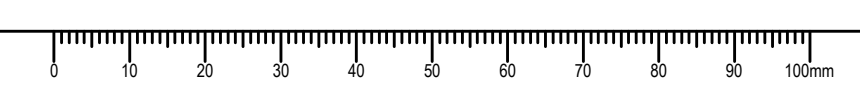
**FIXTURE ROUGH-IN SCHEDULE**

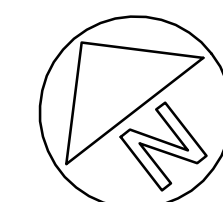
ROUGH-IN FIXTURE PIPING CONNECTIONS IN ACCORDANCE WITH THE FOLLOWING TABLE OF MINIMUM SIZES

FIXTURE	COLD WATER	HOT WATER	SANITARY	VENT	HYDRAULIC LOADS	
					C	H
FLOOR DRAIN	-	-	75	40	-	-
HOSE BIBB (20mm)	20	-	-	-	6	-
SINK (<8.3 LPM)	12	12	40	30	1.4	1.4
LAVATORY BASIN (<8.3 LPM)	12	12	40	30	2	2
SHOWER (<9.5 LPM)	12	12	50	40	4	4
WATER CLOSET (TANK <6LPM)	12	-	75	50	2.2	-
CLOTHES WASHER (3.5KG)	12	12	50	30	3	3
DISHWASHER (DOMESTIC)	-	12	40	30	-	1.4

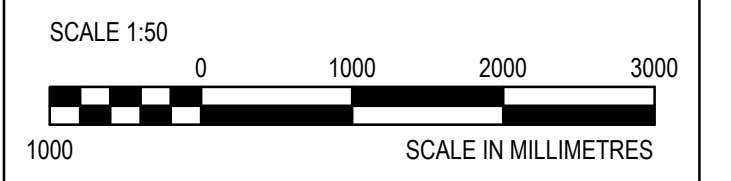
**GENERAL NOTES:**

- ALL DOMESTIC WATER AND VENT PIPES SHALL RUN IN WALLS, ABOVE CEILINGS OR IN BULKHEADS. REFER TO ARCHITECTURAL DRAWINGS FOR CEILING AND BULKHEAD LOCATIONS





JOB No. 131-19106-06



Revision/Revision	Description/Description	Date/Date
C	ISSUED FOR TENDER	2017-08-25
B	ISSUED FOR PERMIT	2017-07-17
A	60% Review	2017-05-23

**FISHERIES AND OCEANS, REAL PROPERTY, SAFETY AND SECURITY**  
VANCOUVER, BC  
200-401 BURRARD ST.

Project title/Titre du projet  
**4315 MARINE DRIVE POWELL RIVER, B.C.**

**POWELL RIVER SAR STATION**

Consultant Signature Box Only

Designed by/Concept par  
**ASV**

Drawn by/Dessiné par  
**DDM**

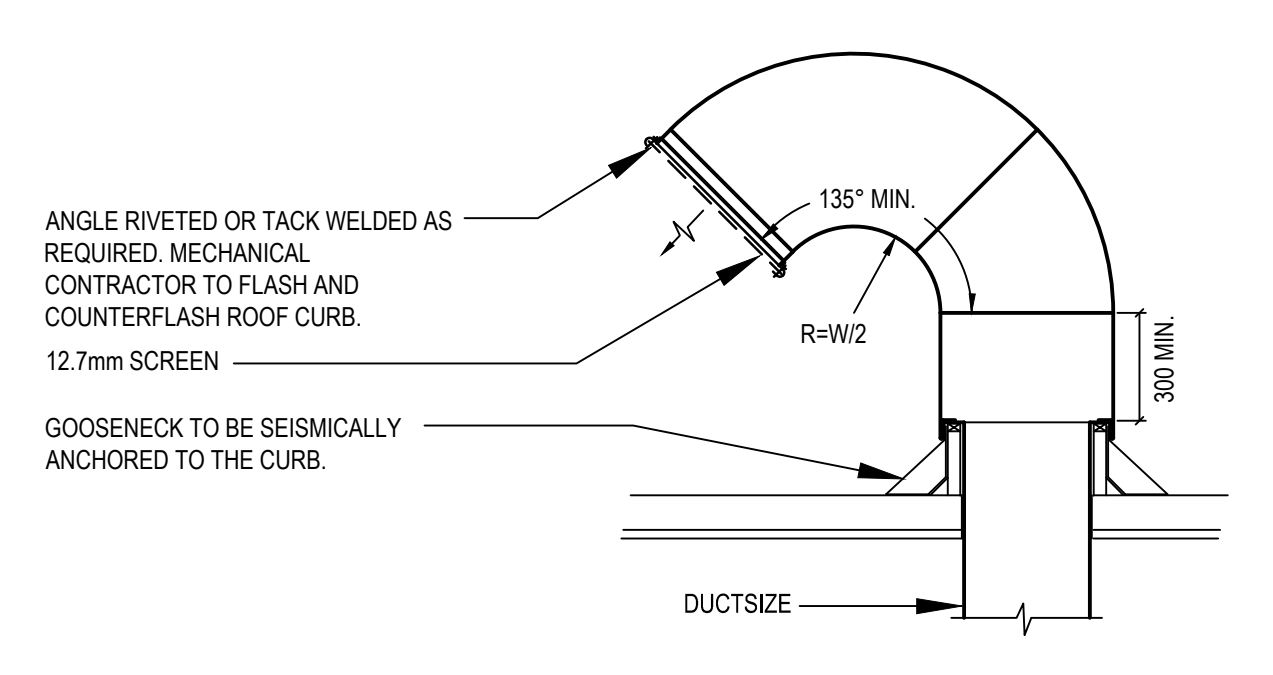
PWGSC Project Manager/Administrateur de Projets TPSGC  
--

PWGSC Regional Manager, Architectural and Engineering Services/  
Gestionnaire régionale, Services d'architecture et de génie, TPSGC  
**PREETIPAL PAUL**

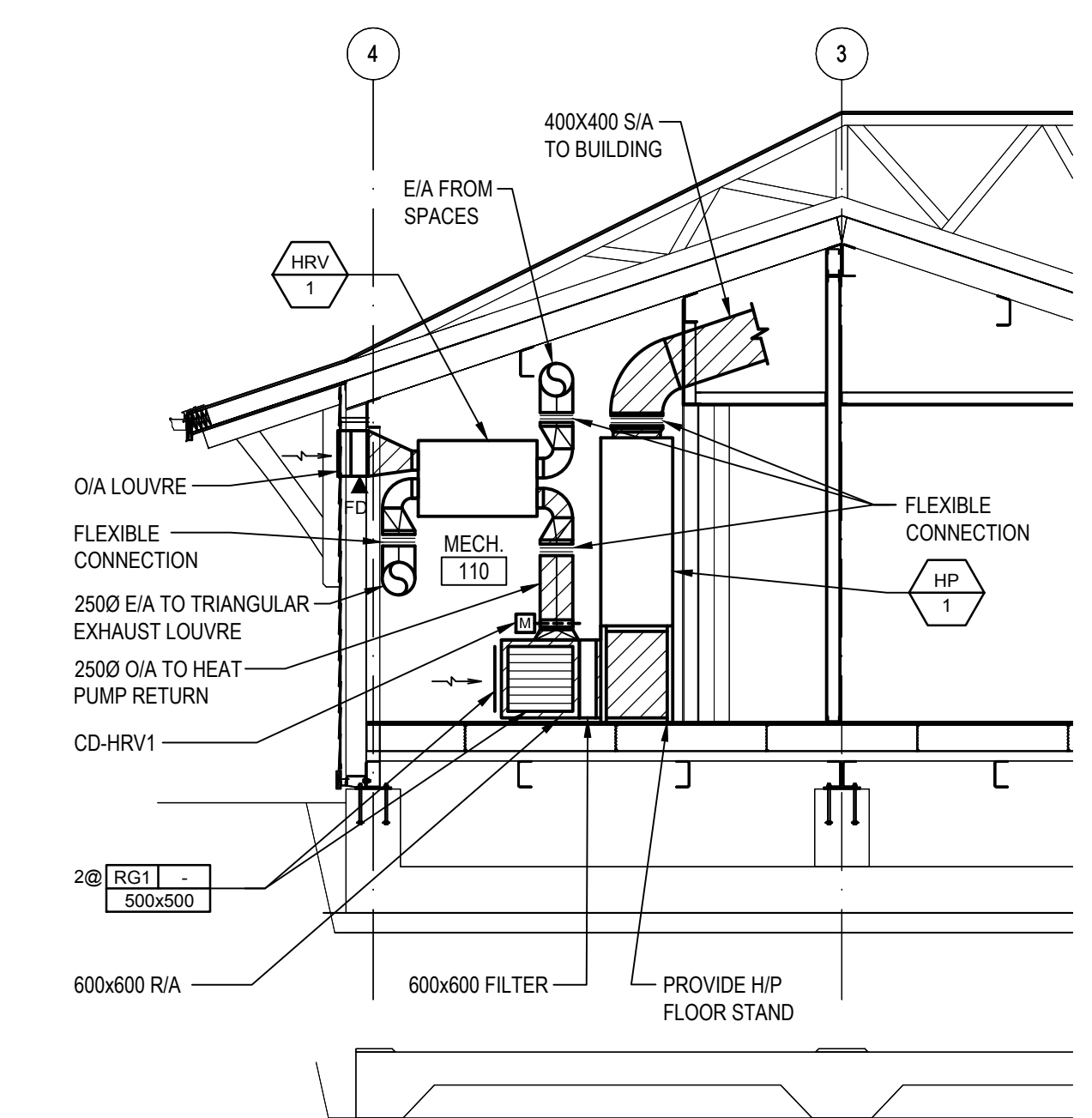
Drawing title/Titre du dessin

**HVAC MAIN FLOOR PLAN**

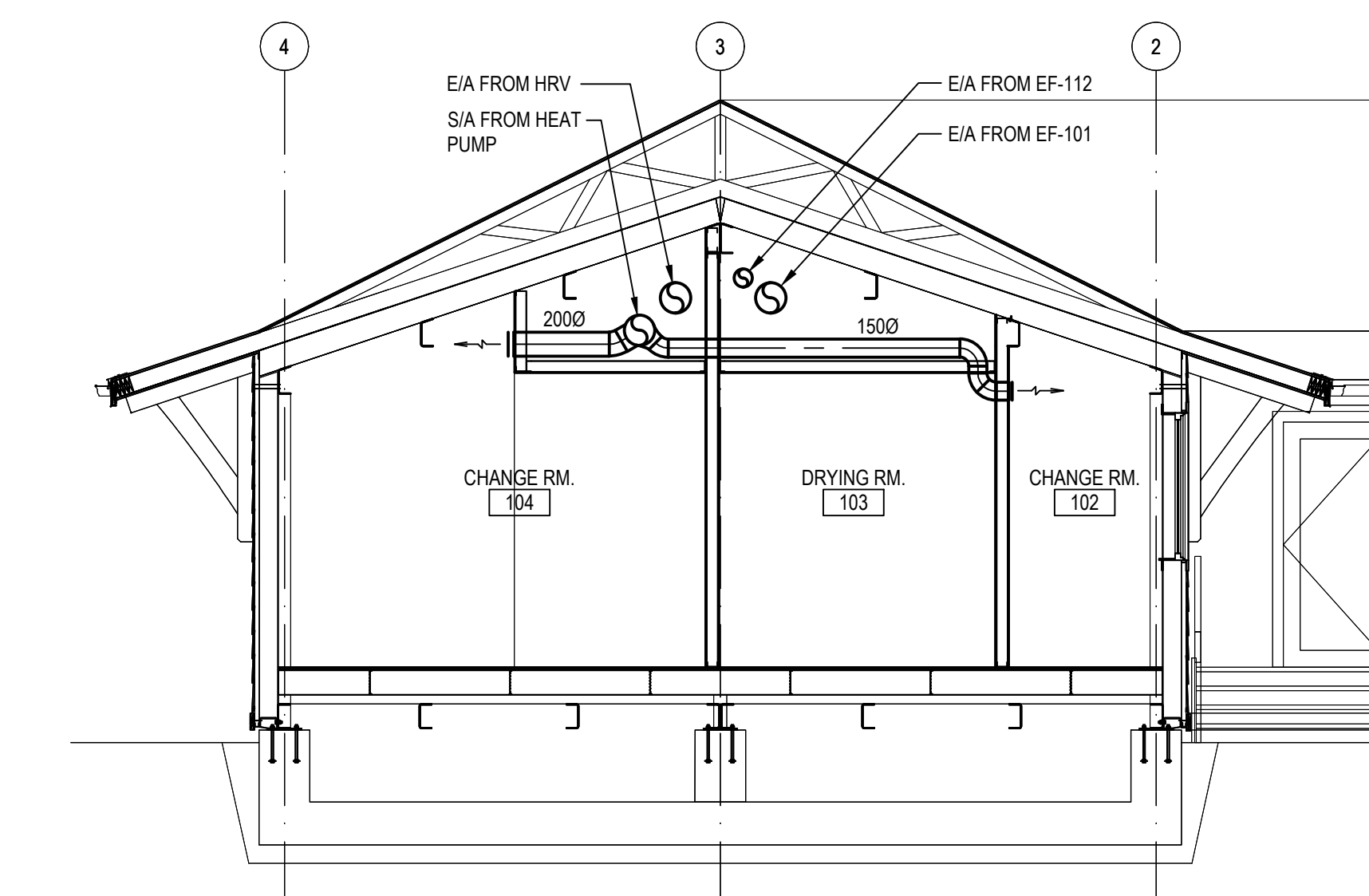
Project No./No. du projet	Sheet/ Feuille	Revision no./ La Révision no.
2016521	M2.01	C



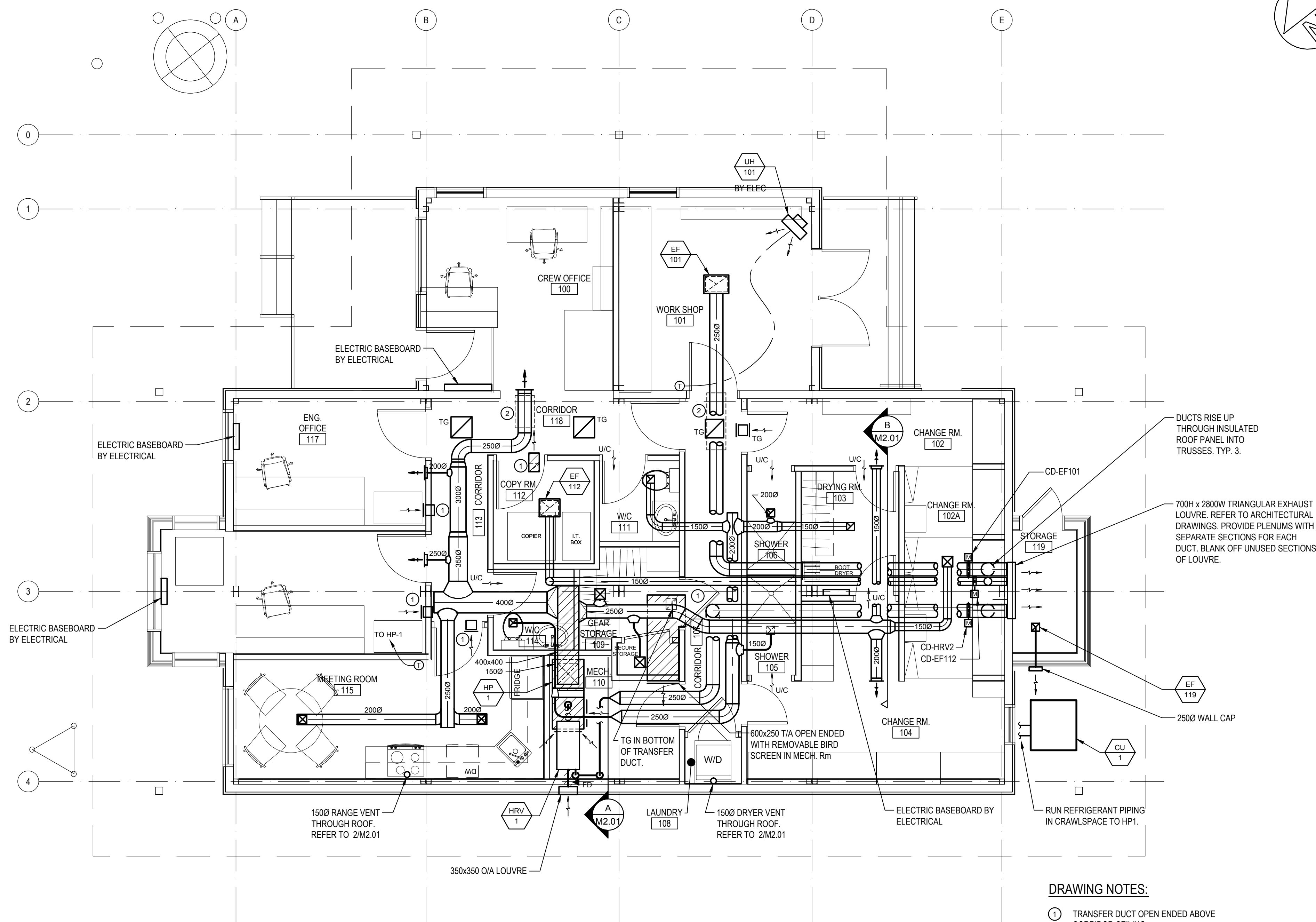
**2 ROOFTOP GOOSENECK**  
M2.01 NTS



**A SECTION**  
M2.01 SCALE 1:50



**B SECTION**  
M2.01 SCALE 1:50



**1 MAIN FLOOR PLAN**  
M2.01 SCALE 1:50

- DRAWING NOTES:**
- ① TRANSFER DUCT OPEN ENDED ABOVE CORRIDOR CEILING.
  - ② RUN INSULATED DUCT THROUGH TRUSSES ABOVE INSULATED ROOF PANEL AS REQUIRED TO AVOID CONFLICTS WITH CORRIDOR CEILING.

AIR TERMINAL SCHEDULE									
ROOM	NAME	GRILLES AND DIFFUSERS							
		TYPE	NO.	SIZE W x H	AIR FLOW l/s / cfm	TYPE	NO.	SIZE W x H	AIR FLOW l/s / cfm
100	CREW OFFICE	SR1	1	300 x 200	160 / 340	-	-	-	-
102	CHANGE RM	SR1	1	150 x 150	45 / 95	TG1	2	250 x 200	- / -
102A	CHANGE RM	SR1	1	150 x 150	40 / 80	-	-	-	-
103	DRYING RM	UNDERCUT DOOR 25mm x2		-	-	ER1	1	150 x 150	45 / 95
104	CHANGE RM	SR1	1	150 x 150	65 / 135	-	-	-	-
105	SHOWER	UNDERCUT DOOR 25mm		-	-	ER1	1	150 x 150	20 / 40
106	SHOWER	UNDERCUT DOOR 25mm		-	-	ER1	1	150 x 150	20 / 40
107	CORRIDOR	TG1	1	300 x 300	- / -	-	-	-	-
109	GEAR STORAGE	SR1	1	150 x 150	25 / 50	TG1	1	200 x 200	- / -
109A	SECURE STORAGE	SR1	1	150 x 150	12 / 25	-	-	-	-
110	MECH. RM	-	-	-	-	RG1	2	500x500	- / -
111	W/C	UNDERCUT DOOR 25mm		-	-	ER1	1	150 x 150	25 / 50
112	COPY RM	TG1	1	200 x 200	- / -	-	-	-	-
114	W/C	UNDERCUT DOOR 25mm		-	-	ER1	1	150 x 150	25 / 50
115	MEETING RM	SR1	2	200 x 200	65 / 140	TG1	1	450 x 250	- / -
116	OIC OFFICE	SR1	1	200 x 200	110 / 235	TG1	1	350 x 250	- / -
117	ENG. OFFICE	SR1	1	200 x 200	80 / 165	TG1	1	250 x 250	- / -
118	CORRIDOR	TG1	2	400 x 400	- / -	-	-	-	-

