



National Research Council  
Canada

Conseil national de recherches  
Canada

Administrative Services  
and Property Management  
Branch

Direction des services  
administratifs et  
gestion de l'immobilier

**NRC · CNRC**

**Addendum / Addenda**

No./N<sup>o</sup>  
1

Project Description / Description de projet  Shipping and Receiving Remodel		
Solicitation No./ No de sollicitation  17-22118	Project No./N <sup>o</sup> de projet  STJ-5442	W.O. No./N <sup>o</sup> d'ordre de travail
Project Engineer / Ingénieur de projet  Rod Griffiths		Date  January 12, 2018
<p><b>Notice:</b> This addendum shall form part of the tender documents and all conditions shall apply and be read in conjunction with the original plans and specifications.</p>		<p><b>Nota:</b> Cet addenda fait partie intégrale des dossiers d'appel d'offres; toutes les conditions énoncées doivent être lues et appliquées en conjonction avec les plans et les devis originaux.</p>

See attached Architectural, Mechanical and electrical Addendum items.

## Architectural ADDENDUM NO. 1

---

1. This Addendum shall form an integral part of the specification to be read in conjunction therewith. This Addendum shall take precedence over all forms of the aforementioned specification with which it may prove to be at variance or may otherwise be qualified in writing by authorized personnel.
  2. The General Conditions and all documents issued with this specification shall apply to govern all phases of the work covered by this Addendum.
  3. The purpose of this Addendum is to inform bidders of clarifications to the contract.
- 

### **.1 ARCHITECTURAL SPECIFICATIONS**

- .1 Reference Table of Contents Section 01 10 10 and revise as noted:
  - .1 Refer Section 08 33 13 Coiling Doors & Grills and change page number to read: "4".
- .2 Reference Section 08 33 13 Coiling Doors & Grills (attached)
  - .1 Refer to Item 1.5 Quality Assurance and revise as noted:
    - .1 Delete 1.5.1 and 1.5.2.
  - .2 Refer to Item 1.6 Warranty:
    - .1 Revise 1.6.1 to read "Provide a written guarantee...workmanship for a period of **2 (two) years** from the date of Substantial Completion".
  - .3 Refer to Part 2 – Products:
    - .1 Refer 2.1. Material: Revise 2.1.1.1 to read: "Acceptable material: Wayne Dalton 500 series., **C.H.I. 6500 series** or approved equal".
    - .2 Revise 2.1.2 to read: "Curtain: Flat slat aluminum".
    - .3 Revise 2.1.3 to read: "Keyed lock and handle".
    - .4 Revise 2.1.4 to read: "Head plate and cover: aluminum".
    - .5 Add 2.1.5: Manual operation.
  - .4 Refer to Item 2.2 Overhead Coiling Shutter Doors:
    - .1 Revise 2.2.5 to read: Enclose counter balance assembly with **aluminum** formed hood.
  - .5 Refer to Item 2.3 Operation:
    - .1 Delete 2.3.2.

### **.2 REFERENCE ARCHITECTURAL DRAWINGS**

- .1 Refer: Drawing 5442-A01  
Grid Labels shown  
Reference Demolition notes:  
Note #10 added "10. RELOCATION OF INVENTORY STORED IN EXISTING STORAGE UNITS BY OWNER. COORDINATE WITH OWNER."
  - .2 Refer: Drawing 5442-A02  
Grid Labels shown

---

**NRC Shipping and Receiving Renovations**

**NRC St. John's, NL**

**5442 16-6201-05**

Addendum # 1

**2018/01/12**

Page 2 of 1

---

- .3 Refer: Drawing 5442-A03  
Grid Labels shown  
Full mezzanine plan shown.  
Dimension of new door from existing wall shown.  
Partition Type 1  
Construction of Partition type one changed to reflect full height of wall and the addition of the ceiling in the battery storage.  
Partition Type 2  
Construction of Partition type two changed to reflect height of walls and the addition of a ceiling/platform above the partition.  
See attached Re-Issued Drawing 5442-A03
- .4 Refer: Drawing 5442-A05  
Reference Detail 3/A05  
Detail revised to reflect counter top and dimensions. See attached ASK 01  
Reference Detail 4/A05  
Detail revised at base, notes and dimensions added. See attached ASK 02
- .5 Refer: Drawing 5442-A06  
Reference Room and Finish Schedule  
2176 Vestibule notes a ceiling Material Gypsum Board, Finish Paint, Height 3415mm. See attached sketch ASK 03
- .6 See attached Electrical and Mechanical Addendum #1 and Sketch.

**END OF ADDENDUM # 1**

**ELECTRICAL ADDENDUM #1**  
**NRC Shipping & Receiving Renovations**  
**Issued January 10, 2018**

The following shall be added to the Electrical plans and specification to form the complete tender documents for the above noted project:

**Reference Mechanical Addendum #1**

1. Contractor to disconnect and reconnect two unit heaters as indicated on attached Mechanical Addendum #1. Extend wiring and conduit as required. Coordinate on site with Mechanical Division.

-END OF ADDENDUM-



**MECHANICAL ADDENDUM #1**  
**NRC Shipping & Receiving Renovations**  
**Issued January 9, 2018**

The following shall be added to the Mechanical plans and specification to form the complete tender documents for the above noted project:

**Reference Mechanical Drawing MD-1 – Partial Floor Plan – Demolition Layout**

1. See attached sketch MSK-1 for heater relocation and standpipe cabinet relocation.

**Reference Mechanical Drawing MV-1 – Partial Floor Plan Mechanical Layout**

1. See attached sketch MSK-1 for new supply air duct serving new office.

-END OF ADDENDUM-

PART 1 - GENERAL

- 1.1 RELATED SECTIONS
- .1 Section 05 50 00 - Metal Fabrications.
  - .2 Section 06 10 00 - Rough Carpentry.
  - .3 Section 08 71 00 - Door Hardware.
  - .4 Section 09 91 23 - Interior Painting.

1.2 REFERENCES

- .1 Codes and standards referenced in this section refer to the latest thereof.
- .2 Aluminum Association (AA).
  - .1 DAF 45, Designation System for Aluminum Finishes.
- .3 American Architectural Manufacturers Association (AAMA)
  - .1 AAMA 609/610, Cleaning and Maintenance Guide for Architecturally Finished Aluminum.
- .4 American Society for Testing and Materials International, (ASTM).
  - .1 ASTM A167, Specification for Stainless and Heat-Resisting Chromium-Nickel Steel Plate, Sheet and Strip.
  - .2 ASTM A276, Specification for Stainless and Heat-Resisting Steel Bars and Shapes.
  - .3 ASTM A480/480M, Specification for General Requirements for Flat-Rolled Stainless and Heat-Resisting Steel Plate, Sheet and Strip.
- .5 Canadian General Standards Board (CGSB).
  - .1 CAN/CGSB 1.198, Cementitious Primer for Galvanized Surfaces.
  - .2 CAN/CGSB-85.100, Painting.
- .6 Canadian Standards Association (CSA).
  - .1 CAN/CSA-O141, Softwood Lumber.
- .7 National Fire Protection Association (NFPA).
  - .1 NFPA 80, Standard for Fire Doors and Other Opening Protectives.
- .8 Underwriters' Laboratories of Canada (ULC).

- .1 CAN4-S104, Standard Method for Fire Tests of Door Assemblies.
- .2 CAN/ULC-S105, Standard Specification for Fire Door Frames.

### 1.3 SUBMITTALS

- .1 Product Data:
  - .1 Submit manufacturer's printed product literature, specifications and data sheet.
  - .2 Submit two copies of WHMIS MSDS – Material Safety Data Sheets Submit. Indicate VOC's:
    - .1 For caulking materials during application and curing.
    - .2 For door materials and adhesives.
- .2 Shop Drawings:
  - .1 Indicate each type of coiling counter door, arrangement of hardware, operating mechanism and required clearances.
- .3 Submit duplicate 300mm long pieces of coiling curtain slats, guides frame.
- .4 Manufacturer's Instructions:
  - .1 Submit manufacturer's installation instructions.
- .5 Submit copies of manufacturer's field reports.

### 1.4 CLOSEOUT SUBMITTALS

- .1 Provide operation and maintenance data for overhead coiling counter doors and hardware for incorporation into manual specified in Section 01 10 00 – General Instructions.

### 1.5 QUALITY ASSURANCE (Refer Addendum # 2 January 12, 2018 – Delete Section)

### 1.6 WARRANTY

- .1 **Provide a written guarantee, signed and issued in the name of the owner, covering the coiling counter doors for both material and workmanship for a period of 2 (two) years from the date of Substantial Completion. (Refer Addendum # 2)**

- .2 Areas which prove to be defective in any way shall be repaired or replaced and any damage to other work as a result of such defects shall be repaired at no cost to the Owner.

## PART 2 - PRODUCTS

### 2.1 MATERIALS

**(Refer Addendum # 2 )**

- .1 Coiling Counter doors.
  - .1 Acceptable material: Wayne Dalton 500 series, ***C.H.I. 6500 series*** or approved equal.
  - .2 ***Curtain: Flat slat aluminum***
  - .3 ***Keyed lock and handle.***
  - .4 ***Head plate and cover: aluminum***
  - .5 ***Manual operation.***

### 2.2 OVERHEAD COILING SHUTTER DOORS

- .1 Rivet continuous end locks to slat ends.
- .2 Provide bottom bar of equal mass, steel angles.
- .3 Construct counterbalance assembly consisting of torsion spring with 25% overload factor. Enclose spring in steel pipe to support door curtain and counterbalance mechanism with maximum deflection of 1/360th of opening width. Provide ball bearings at rotating points. Provide spring tension adjusting wheel, accessible for setting.
- .4 Support counterbalance assembly on 5 mm minimum thickness steel plate brackets, forming end enclosures.
- .5 Enclose counter balance assembly with ***aluminum*** formed hood.  
**(Refer Addendum # 2)**
- .6 Equip coiling doors for locking from inside with slide bolts and padlocking.

### 2.3 OPERATION

- .1 Equip coiling counter doors for operation by:



- .1 Hand, install two lift handles at coiling counter door bottom on inside, outside face of coiling counter door or provide continuous extruded lifting strip.

**.2 (Refer Addendum # 2 – Delete)**

**PART 3 - EXECUTION**

**3.1 INSTALLATION**

- .1 Install coiling doors in accordance with manufacturers' printed instructions.
- .2 Adjust operable parts for correct function and smooth operation.

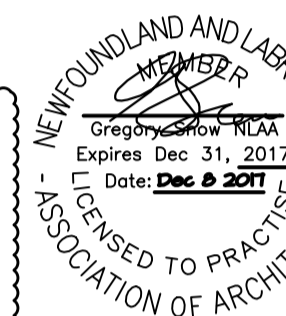
**3.2 CLEANING**

- .1 Perform cleaning of aluminum components in accordance with AAMA 609/610.
- .2 Perform cleaning after installation to remove construction and accumulated environmental dirt.
- .3 Clean aluminum with damp rag and approved non-abrasive cleaner in accordance with manufacturer's instructions.
- .4 Remove traces of primer, caulking; clean doors and frames.
- .5 Upon completion of installation remove surplus materials, rubbish, tools and equipment barriers.

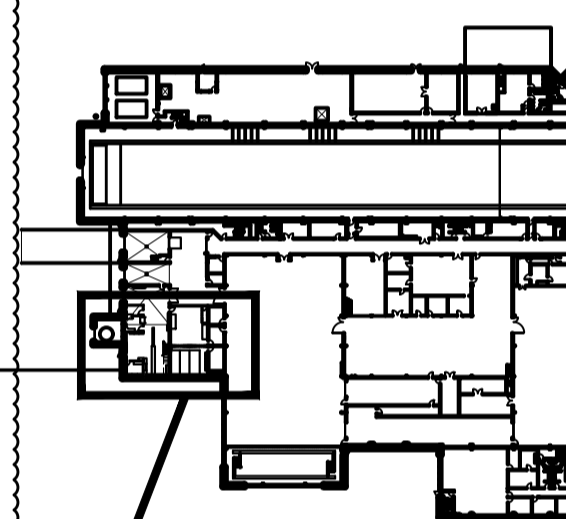
**3.3 COMMISSIONING**

- .1 Contractor to instruct maintenance personnel in operation and maintenance of doors and hardware.
- .2 Confirm operation and function for all doors and hardware.
- .3 Commissioning will be witnessed by NRC Departmental Representative and certificate will be signed by Contractor.

**END OF SECTION**



**KEY PLAN**



**AREA OF WORK**  
Contractor to verify all dimensions & conditions on site and immediately notify the engineer of all discrepancies.

0-1	ISSUED addendum #1	Jan 9 2018
0	ISSUED TENDER REVIEW	Dec 8 2017
revisions		date
Project		Project

**NRC SHIPPING RECEIVING RENOVATIONS**

**NEW FLOOR PLAN LEVEL ONE MEZZANINE**

designed	GS	conçu
date	AUG 2017	
drawn	DDW	dessiné
date	AUG 2017	
approved		approuvé
date		
Tender		Submission
PNESC Project Manager	Administrateur de projets TPSC	
Project number		no. du projet

5442

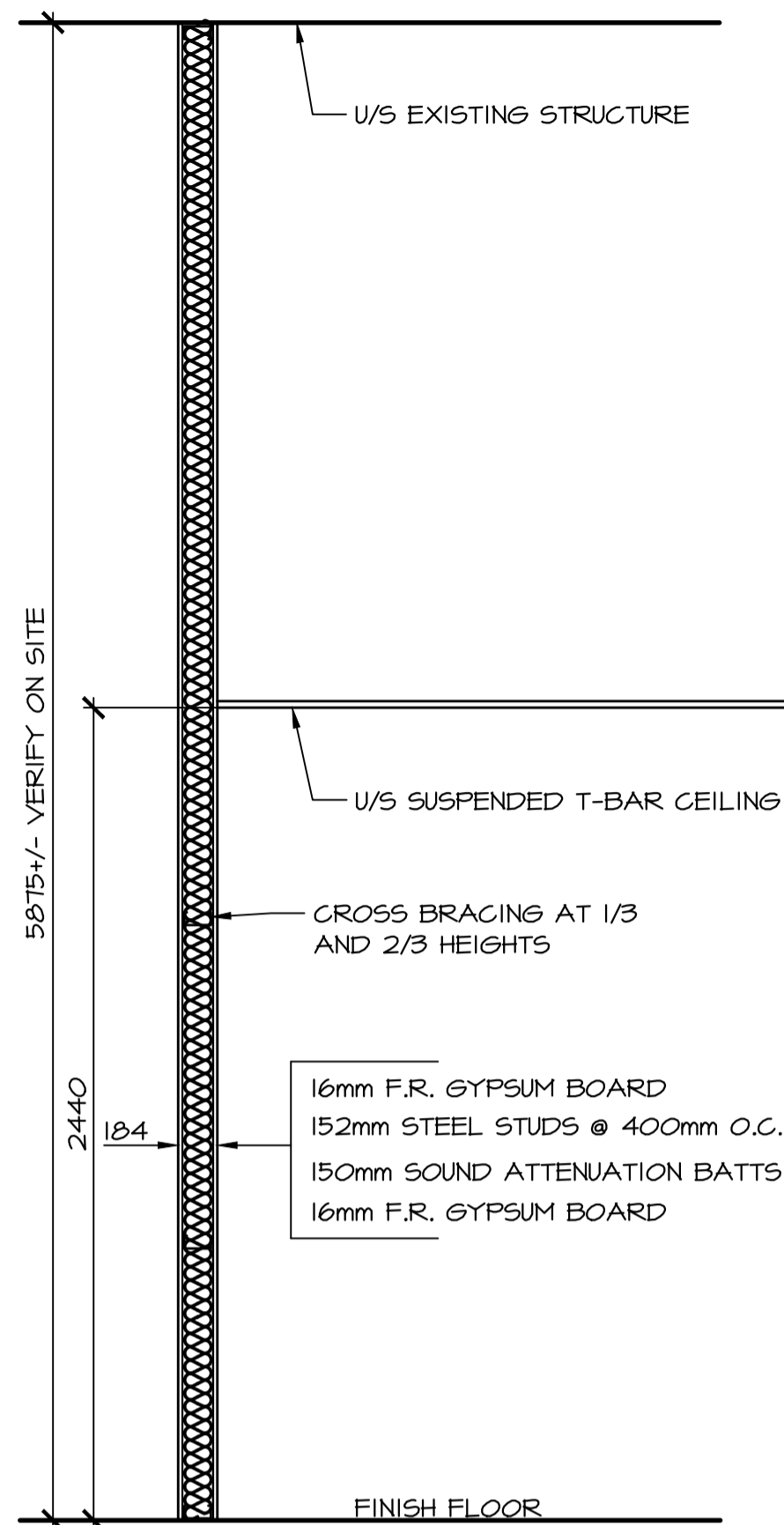
drawing no. 5442-A03 no. du dessin

**LEGEND**

- EXISTING WALL / PARTITION
- NEW WALL / PARTITION, SEE PARTITION SCHEDULE
- EXISTING DOOR AND FRAME
- NEW DOOR AND FRAME
- P# PARTITION TYPE, SEE DRAWING A-3
- #### ROOM/AREA TAG, COORDINATE WITH DRAWING A-6
- ####-H DOOR AND FRAME TAG, COORDINATE WITH DRAWING A-6

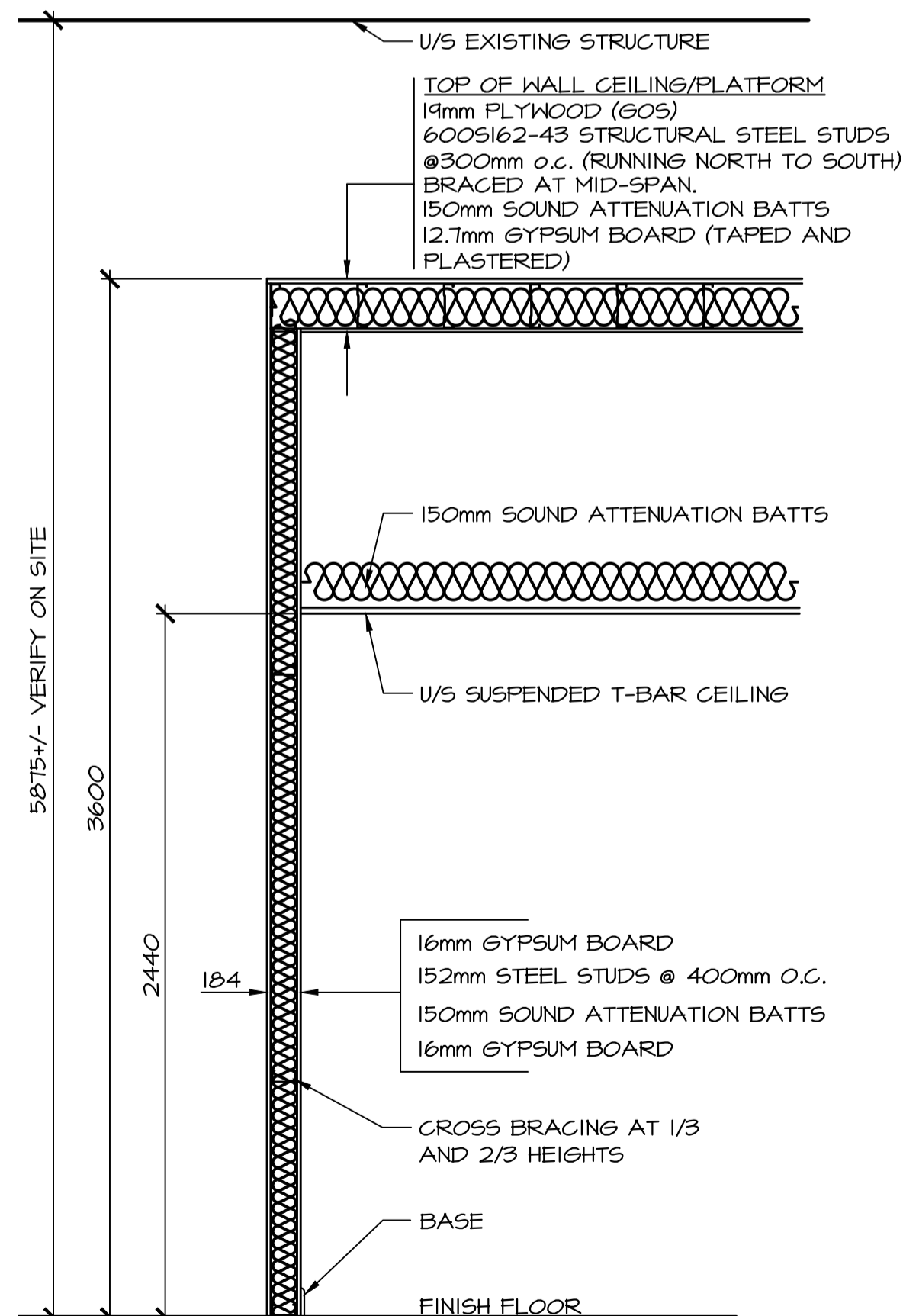
**NEW CONSTRUCTION NOTES:**

1. CONTRACTOR MUST VERIFY ALL DIMENSIONS & CONDITIONS ON SITE BEFORE PROCEEDING WITH ANY PORTION OF THIS WORK. DO NOT SCALE FROM DRAWING.
2. PATCH, PLASTER AND PAINT ANY DAMAGE TO EXISTING CONSTRUCTION TO REMAIN AS RESULT OF DEMOLITION.
3. NEW FINISHED FLOOR IN AREAS NOTED WITHIN SCOPE OF WORK.
4. NEW CEILINGS IN AREAS NOTED WITHIN SCOPE OF WORK. SEE ROOM FINISHED SCHEDULES. COORDINATE WITH MECHANICAL AND ELECTRICAL.
5. NEW 2440mm HIGH CHAIN LINK FENCE AND 2100mm HIGH GATE. TYPICAL 100mm DIA POSTS SECURED TO CONCRETE FLOOR WITH 150x150x10mm STEEL PLATE BOLTED TO CONCRETE FLOOR. TYPICAL 50mm RAILS AND STEEL MESH. PROVIDE DETAILED SHOP DRAWINGS TO SHOW COMPONENTS AND INSTALLATION OF FENCE AND GATE.
6. PAINT ALL EXISTING AND NEW FLOORS THROUGHOUT AREA OF WORK.
7. NEW 100mm HIGH VINYL BASE ON ALL NEW PARTITIONS EACH SIDE. COLOUR BLACK.

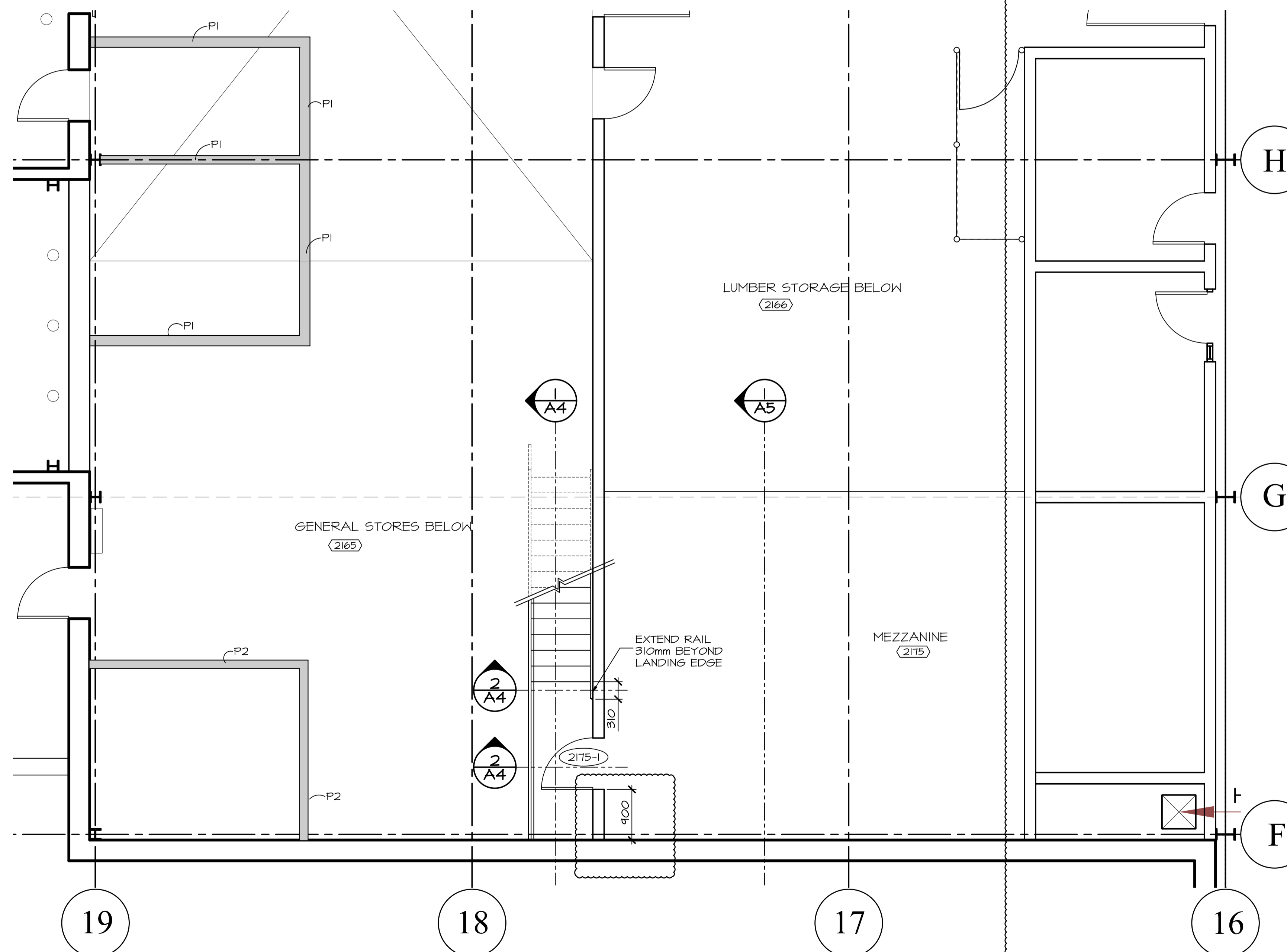


**TYPE 'P2' PARTITION**  
NTS

NOTE: TOP OF WALL CEILING/PLATFORM FULL AREA OF NEW OFFICE #2173 AND NEW VESTIBULE #2176.



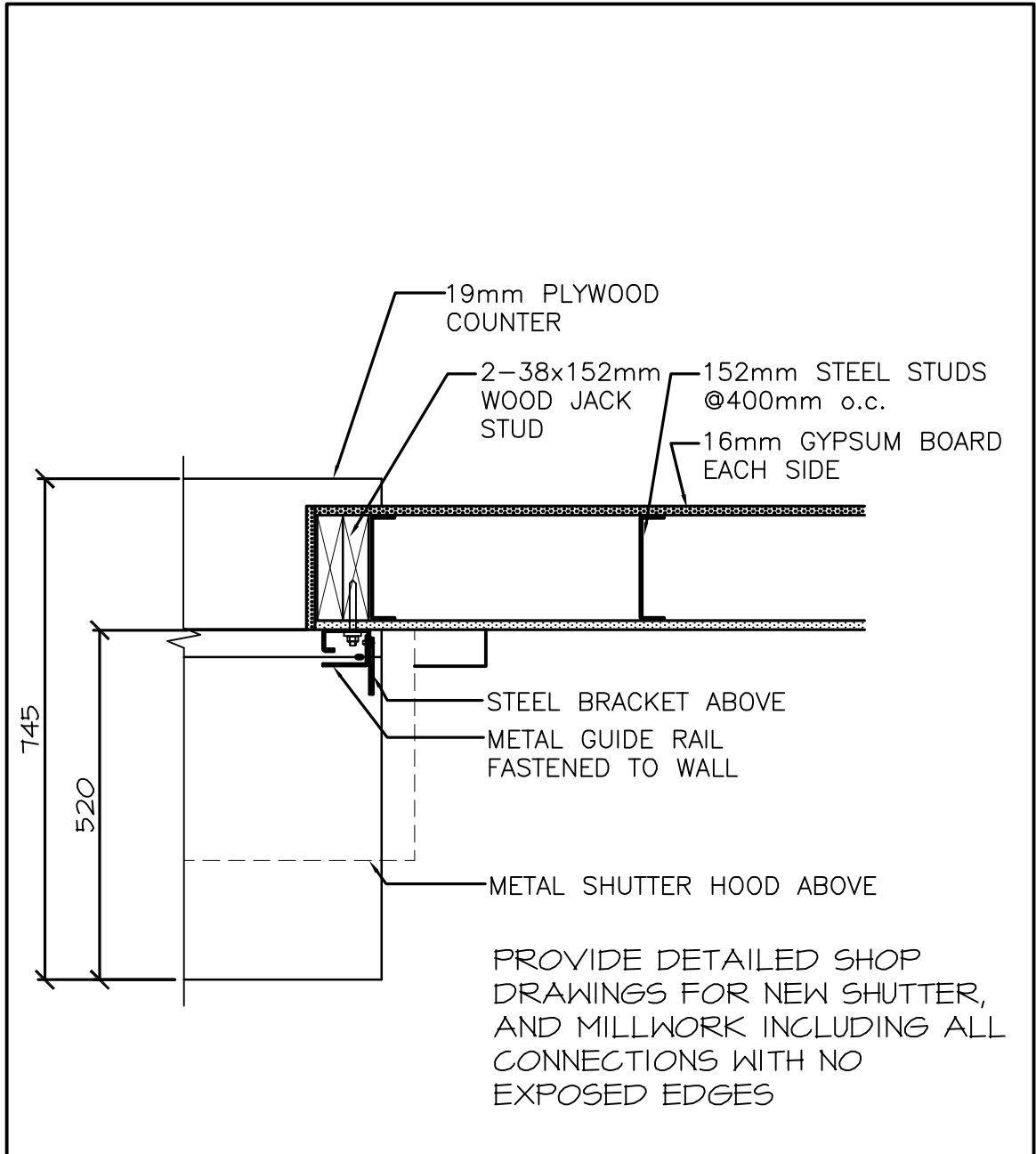
**TYPE 'P1' PARTITION**  
NTS



**PARTIAL NEW FLOOR PLAN MEZZANINE**



DETAIL REVISED TO REFLECT  
ACCURATE COUNTER TOP AND  
DIMENSIONS



### SHUTTER PLAN DETAIL

SCALE : 1:10



Public Works and Government Services Canada Travaux publics et Services gouvernementaux Canada	Drawing title / Titre du dessin <b>SHUTTER PLAN DETAIL REVISION</b>		designed / conçu GS date 18/01/05
	project / projet <b>NRC SHIPPING RECEIVING RENOVATIONS</b>		drawn / dessiné DDW date 18/01/05
		approved / approuvé GS date 18/01/05	Submission / Soumission Administrateur de projets TPSCG no. du dessin <b>ASK-01</b>
		Tender / Offre PWGSC Project Manager / Administrateur de projets TPSCG project number / no. du projet <b>5442</b>	

# PARTIAL DETAIL SHOWN TO NOTE CHANGES TO DETAIL AND INCLUSION OF DIMENSIONS.

VERIFY AND COORDINATE EXACT DIMENSIONS OF STORAGE CABINET TO BE RELOCATED WITH CLEARANCE SIZE UNDERNEATH COUNTER TOP. REFLECT SUCH IN SHOP DRAWINGS.

PROVIDE DETAILED SHOP DRAWINGS FOR NEW SHUTTER AND MILLWORK INCLUDING ALL CONNECTIONS WITH NO EXPOSED EDGES.

16ga STAINLESS STEEL TOP WRAPPED EDGES WITH NO EXPOSED EDGES.

19 mm PLYWOOD

WOOD BLOCKING

19 X 64 mm WOOD FRAMING. REF ELEVATION FOR EXTENT

19 X 38 mm WOOD FRAMING

13 mm GYPSUM BOARD FINISH

19mm PAINTED PLYWOOD GABLES EACH SIDE

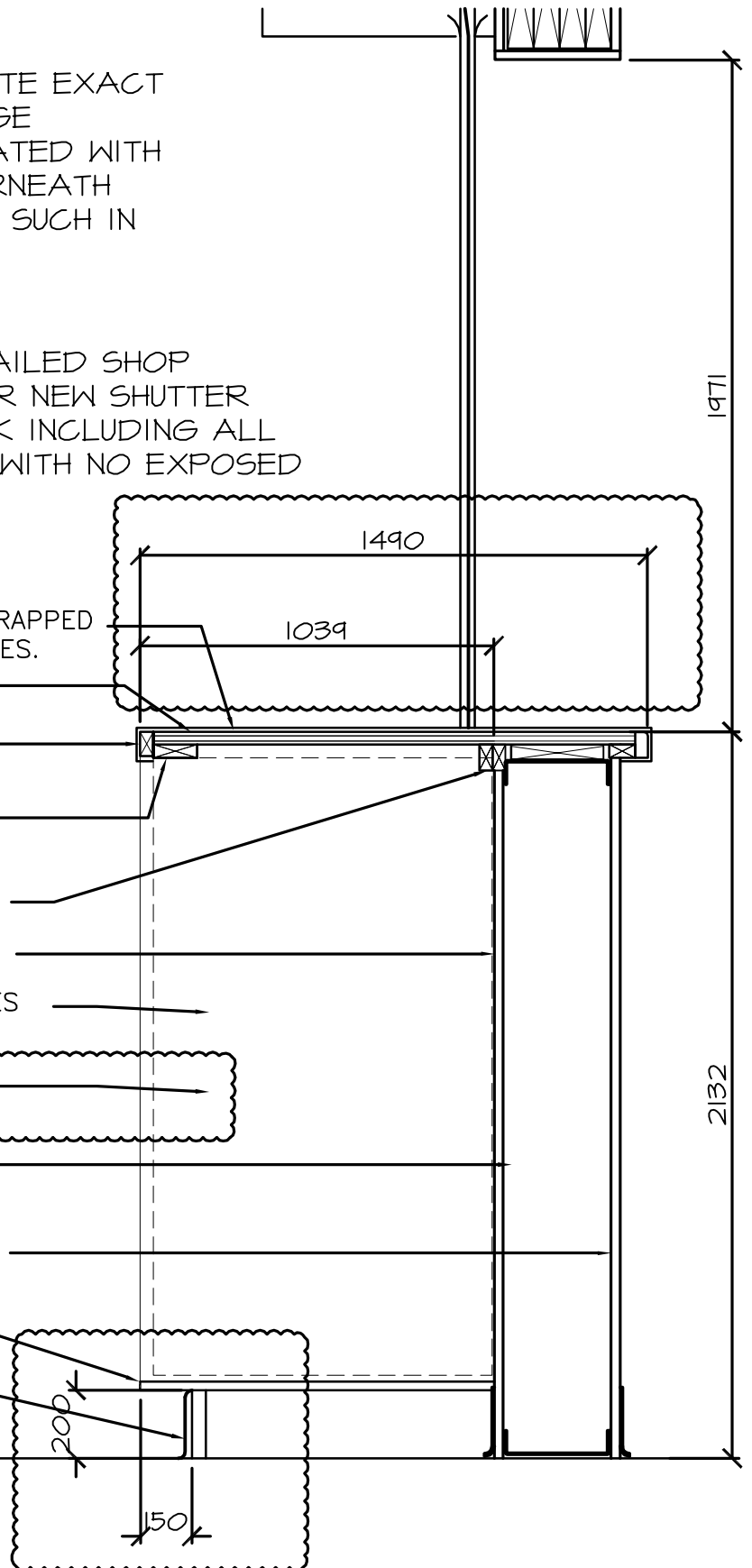
RELOCATED STORAGE UNIT. COORDINATE WITH OWNER.

152 mm METAL STUDS @ 600 mm O.C

13 mm GYPSUM BOARD FINISH

19mm PLYWOOD WITH HARDWOOD EDGING

VINYL BASE ADHERED TO 19mm MCP BOARD



## SHUTTER SECTION DETAIL



Public Works and Government Services Canada Travaux publics et Services gouvernementaux Canada	Drawing title / Titre du dessin <b>SHUTTER SECTION DETAIL REVISION</b>		designed / conçu GS date 18/01/05
	project / projet <b>NRC SHIPPING RECEIVING RENOVATIONS</b>		drawn / dessiné DDW date 18/01/05
		approved / approuvé GS date 18/01/05	Submission / Soumission Administrateur de projets TPSCG drawing no. / no. du dessin <b>ASK-02</b>
		Tender / Offre PWGSC Project Manager / Directeur de projet TPSCG project number / no. du projet <b>5442</b>	

## ROOM FINISH SCHEDULE

ROOM No.	ROOM Name	FLOOR		BASE		N-WALL		E-WALL		S-WALL		W-WALL		CEILING		REMARKS
		Mat.	Fin.	Mat.	Col.	Mat.	Finish Colour	Mat.	Finish Colour	Mat.	Finish Colour	Mat.	Finish Colour	Mat.	Finish Colour	
2059	ELECTRICAL	C	PT	-		EX	-	EX	-	EX	-	EX	-	EX	-	
2060	OFFICE	C	PT	-		EX	-	EX	-	EX	-	EX	-	EX	-	
2061	TOOL CRIB	C	PT	-		EX	-	EX	-	EX	-	EX	-	EX	-	
2165	GENERAL STORES	C	PT	-/V	BLACK	GB	PT	EX	PT	EX/GB	PT	EX/GB	PT	-	-	
2166	LUMBER STORAGE	C	PT	-		-	-	EX	-	EX	-	EX	-	EX	-	PAIN UNDERSIDE OPEN STEEL FRAME OF MEZZANINE
2172	DUST COLLECTOR	C	PT	-		EX	-	EX	-	EX	-	EX	-	EX	-	
2173	OFFICE	C	PT	V	BLACK	GB	PT	GB	PT	GB	PT	EX	PT	ACT	2440	
2174	BATTERY STORAGE	C	PT	V	BLACK	GB	PT	GB	PT	EX	PT	EX	PT	ACT	2440	
2175	MEZZANINE	C	PT	-		-	-	EX	PT	EX	PT	EX	PT	-	-	
2176	VESTIBULE	C	PT	-		GB	PT	EX	PT	GB	PT	GB	PT	GB	3415	



Public Works and Government Services Canada / Travaux publics et Services gouvernementaux Canada

project

**NRC SHIPPING RECEIVING RENOVATIONS**

project

Drawing title

**ROOM FINISH SCHEDULE REVISION**

Titre du dessin

designed **GS** date **18/01/05**

drawn **DDW** date **18/01/05**

approved **GS** date **18/01/05**

Tender

PWSSC Project Manager

project number

**5442**

no. du projet

Administrateur de projets TPSSC

no. du dessin

drawing no. **ASK-03**

