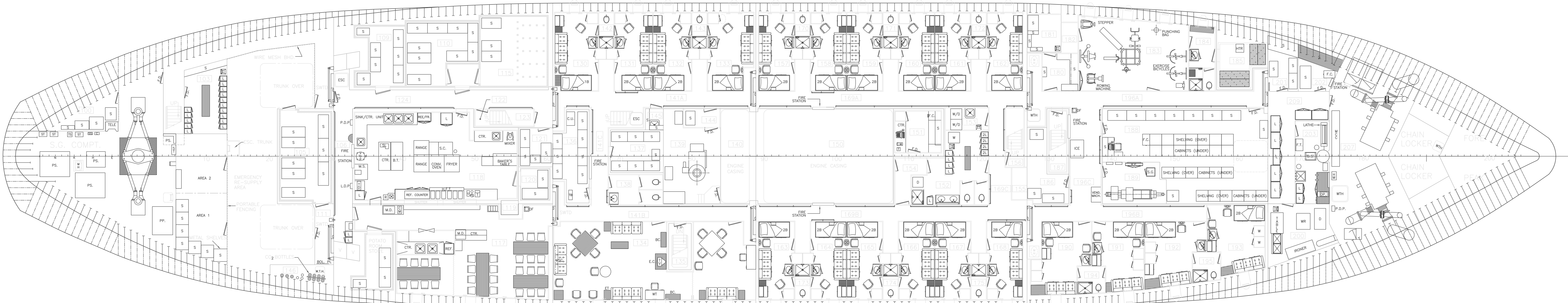


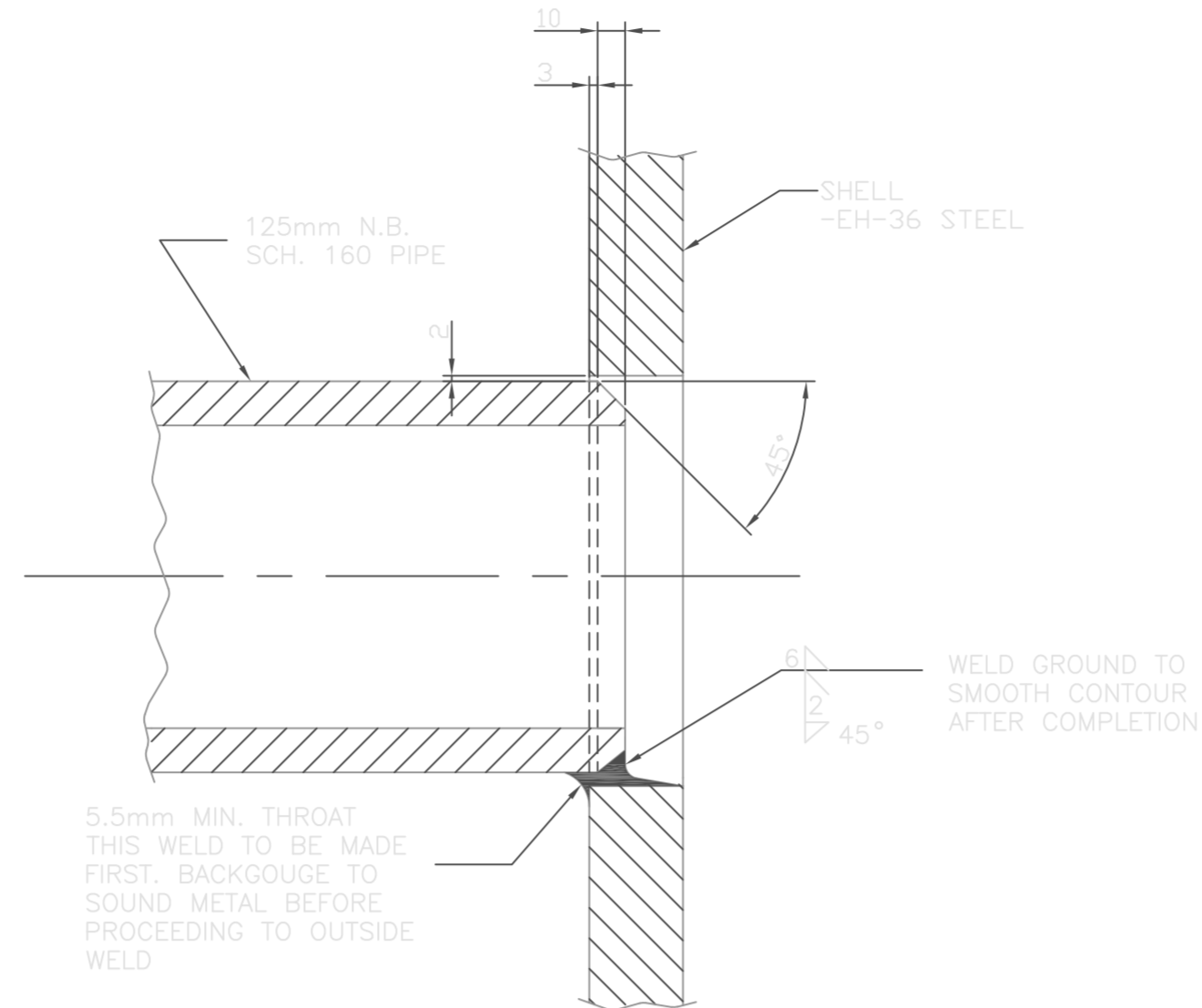
ABBREVIATIONS					
A	—	ASHTRAY	L	—	LOCKER
1B	—	1 BERTH	M.D.	—	MILK DISPENSER
2B	—	2 BERTHS	M.O.	—	MICROWAVE OVEN
BR.	—	BOOKRACK	MS	—	MEATSAW
BS.	—	BANDSAW	M.S.C.	—	MOVIE SCREEN
C	—	COMPASS	P.L.	—	PLATE LOWERATOR
CH.D.	—	CHEST OF DRAWERS	P.P.	—	POWER PACK
C.M.	—	COFFEE MAKER	P.S.	—	PUMPSET
C.U.	—	COOLING UNIT	REF.	—	REFRIGERATOR
D.C.	—	DISPLAY COUNTER	S.	—	SHELVE
DF	—	DRINKING FOUNTAIN	S.C.	—	STEAM COOKERS & KETTLES
D.P.D.	—	DOUBLE PEDESTAL DESK	SL	—	SUCER
DP.	—	DRILLPRESS	T.	—	TOASTER
D.	—	DRYER	T.B.	—	TERMINAL BOX
E.T.	—	END TABLE	T.D.	—	TENDERIZER
F.C.	—	FILING CABINET	U.	—	HOT WATER URN
FR.	—	FREEZER	V.P.	—	VEGETABLE PEELER
F.T.	—	FOLDING TABLE	W.	—	WARDROBE
H.	—	HAND DRYER	WB.	—	WORKBENCH
H.TR.	—	HEATER	WR.	—	WASHER
H.F.T.	—	HOT FOOD TABLE	W.T.	—	WRITING TABLE
F.S.	—	FOLDING SEAT	P.D.P.	—	POWER DISTRIBUTION TABLE
H.M.	—	HULL MONITOR	L.D.P.	—	LIGHTING DIST. PANEL
G.B.	—	GARBAGE BIN			

NO.	COMPARTMENT	NO.	COMPARTMENT
100	STORE	160	LEADING SEAMAN
103	CREW CHANGE ROOM	161	LEADING SEAMAN
105	REFRIG. CARGO ROOM	162	LEADING SEAMAN
108	POTATO ROOM	163	SEAMAN
109	FRUITS & VEGETABLE ROOM	164	SEAMAN
110	COOL. DAIRY ROOM	165	SEAMAN
115	COLD ROOM	166	SEAMAN
116	HANDLING ROOM	167	OILER
117	CREWS CATERERIA	168	OILER
118	GALLEY	170	WASHROOM
119	DUMB WATER	171	WASHROOM
120	GALLEY REFRIG.	172	WASHROOM
121	DRY PROVISION STORE NO.1	173	WASHROOM
123	LOCKER	174	WASHROOM
130	CHIEF COOK	175	WASHROOM
131	SECOND COOK	180	CANTEEN
132	STEWARD	181	CANTEEN STORE
133	STEWARDS	182	GYMNASIUM LOCKER
134	CREWS LOUNGE	183	GYMNASIUM
136	STORE	184	WATCH & CHANGE ROOM
137	STORE	185	SAUNA
138	DRY PROVISION STORE NO.3	186	BONDED STORE
139	INCINERATOR ROOM	188	CENTRAL STORE ROOM
143	WASHROOM	189	FAN ROOM AHU #5
144	WASHROOM	190	OILER
145	GARBAGE BIN ROOM	191	OILER
146	CO2 ROOM	192	OILER
150	ENGINE CASING	193	E/R TECHNICIAN
151	ELECTRICAL EQUIP. WORKSHOP	194	WASHROOM
152	CHANGE ROOM	195	WASHROOM
153	LAUNDRY	200	LAUNDRY
155	CABLE TRUNK	201	STORE
156	LOBBY	202	STORE
157	STOREKEEPER	203	CARPENTERS SHOP
158	SPARE	207	AIR BUBBLER MACHINERY
159	LEADING SEAMAN	209	COMPARTMENT STORES



LENGEND	
SYMBOL	DESCRIPTION
	BUTTERFLY VALVE *
	HYDRAULIC OPERATED BUTTERFLY VALVE *
	CHECK VALVE
	FLEXIBLE CONNECTION *
	PRESSURE GAUGE
	LINE NUMBER CHANGE

MACHINERY DATA		DESCRIPTION	COMP. CAP. HEAD	KW	RPM
ITEM	QTY				
①	2	SINGLE STAGE CENTRIFUGAL COMPRESSOR	6.94 M <sup>3</sup> /S	61 KPA	450 1750



DETAIL 'A' BUBBLER NOZZLE HULL PENETRATION  
(TYPICAL) SCALE 1:2.5

#### GENERAL NOTES

ALL PIPING TO BE ERW ASTM A 53 BLACK  
PIPING INSIDE TANKS, BELOW WATERLINE AND BETWEEN SHELL AND ISOLATING VALVE TO BE AS FOLLOWS:  
600mm - 24"-SCH X5 (0.5 WALL) 350mm 14" SCH.X5(0.5mm WALL)  
500mm - 20"-SCH 30 (0.5 WALL)  
125mm - 8" -SCH 160 (0.625 WALL)

PIPING OUTSIDE OF TANKS AND ABOVE WATERLINE TO BE AS FOLLOWS:  
600mm - 24"-SCH 20 (0.375 WALL)  
500mm - 20"-SCH 20 (0.375 WALL)

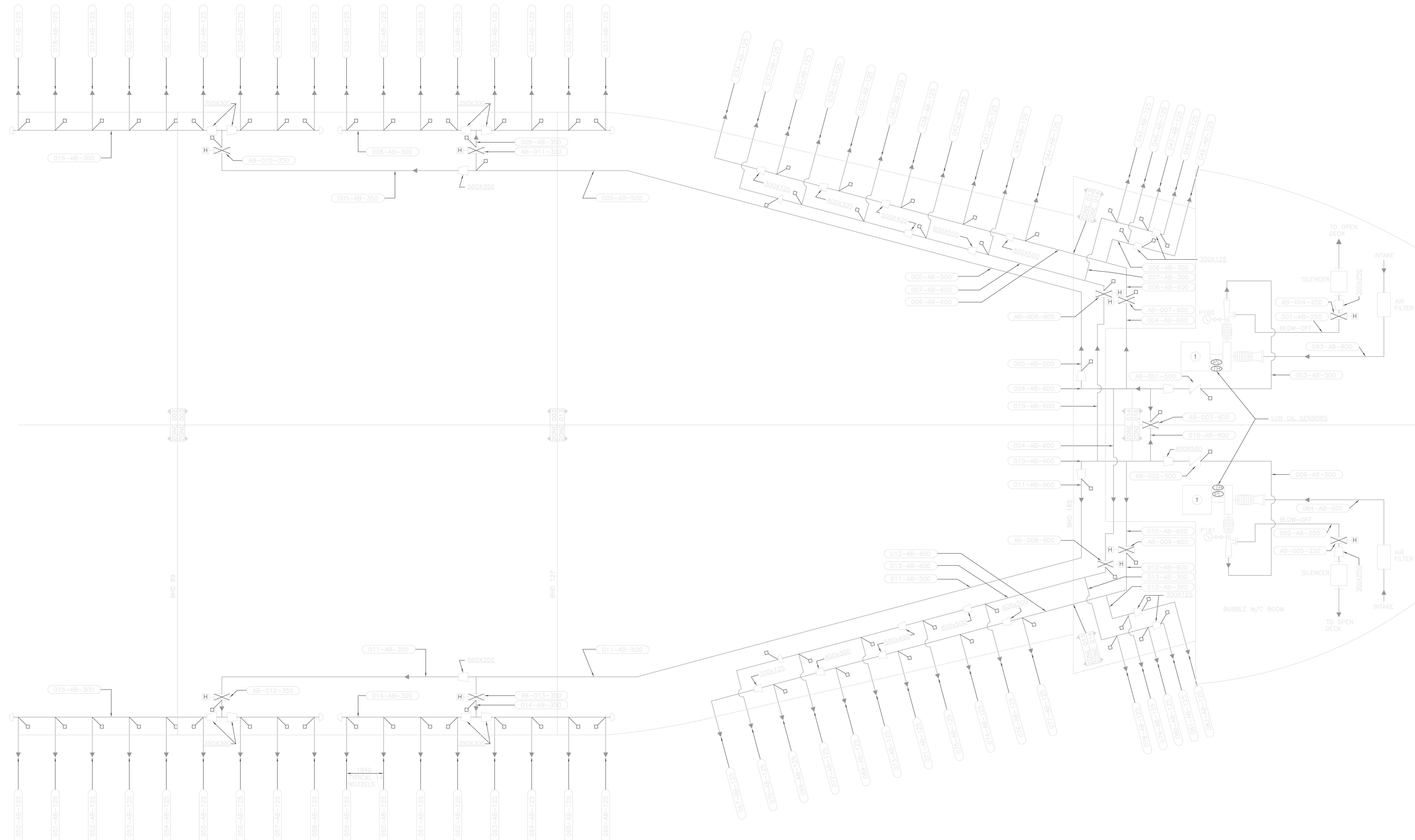
#### FITTINGS:

BUTT WELD - INSIDE TANKS AND BELOW WATERLINE  
GROOVED WELD - OUTSIDE TANKS AND ABOVE WATERLINE  
WELDING OF 5"-SCH 160 DISCHARGE PIPES TO THE HULL SHALL BE AS SHOWN IN DETAIL 'A'

#### VALVES:

SUPPLIED BY MANUFACTURER  
FOR WELDING OF NOZZELS TO HULL PLATE USE E-7018 ELECTRODES\*  
SYSTEM TO BE TESTED TO TWICE WORKING PRESSURE

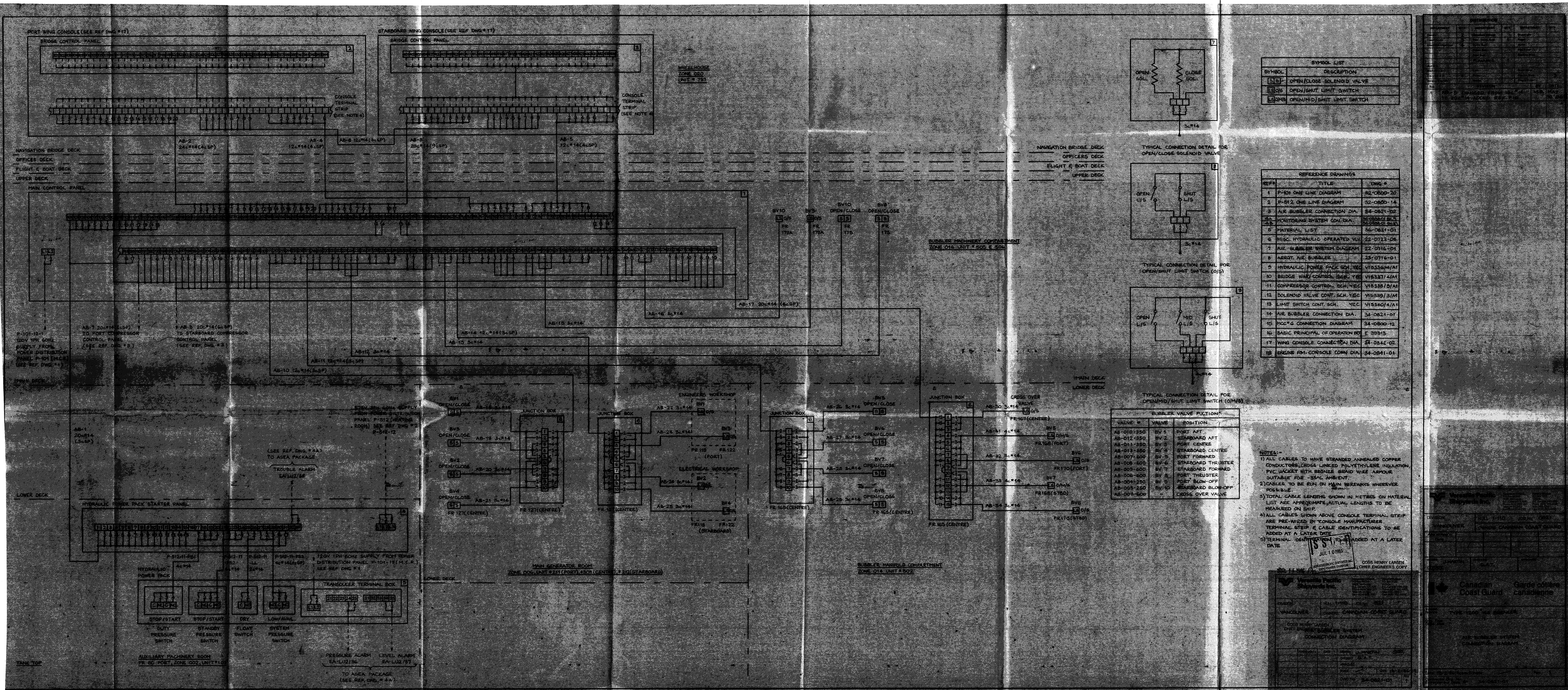
\* - TO BE LLOYDS TYPE APPROVED



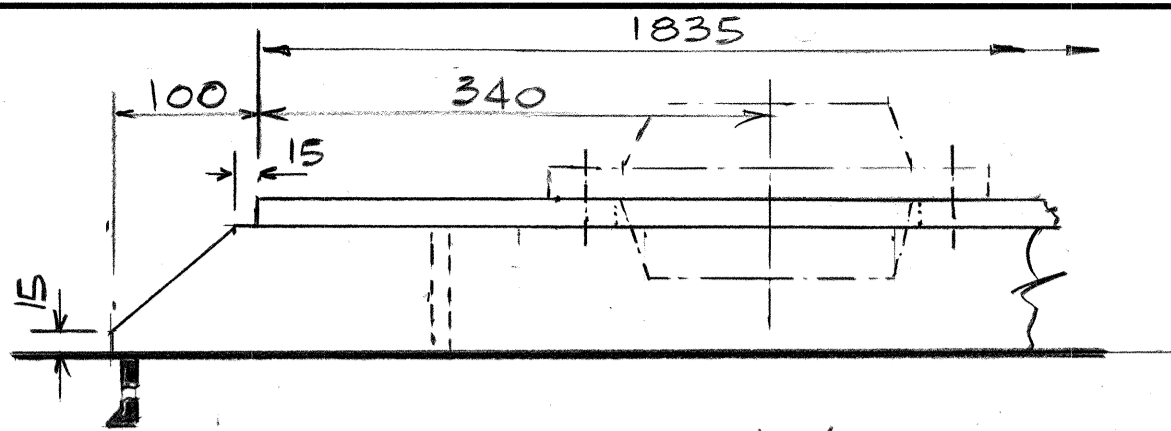




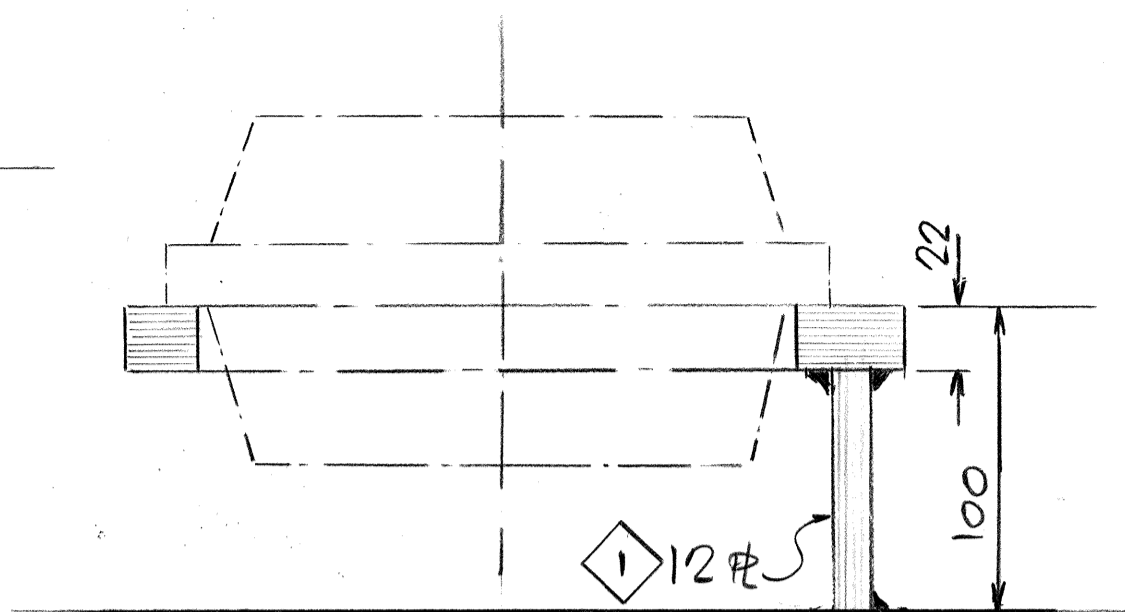




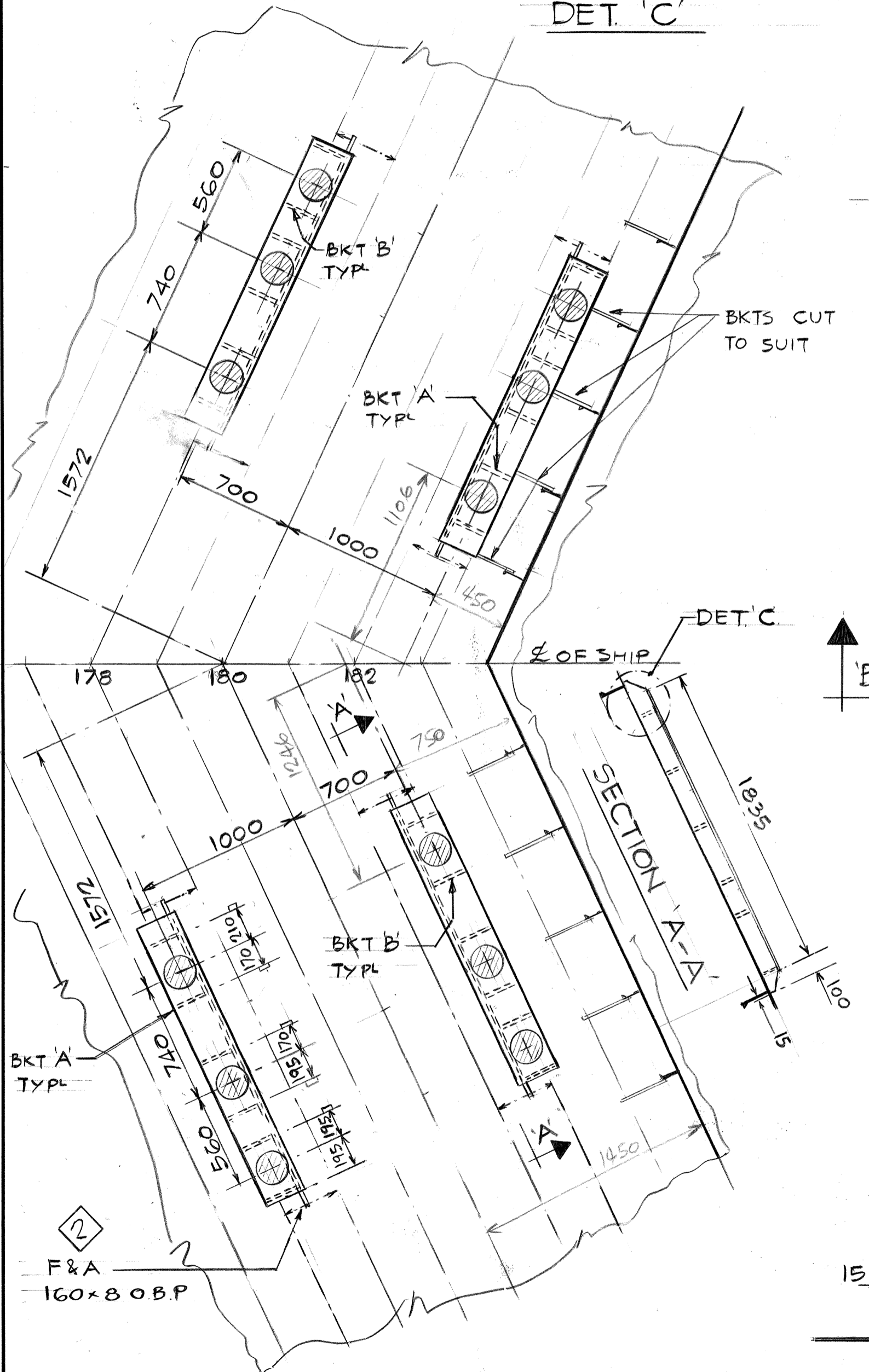




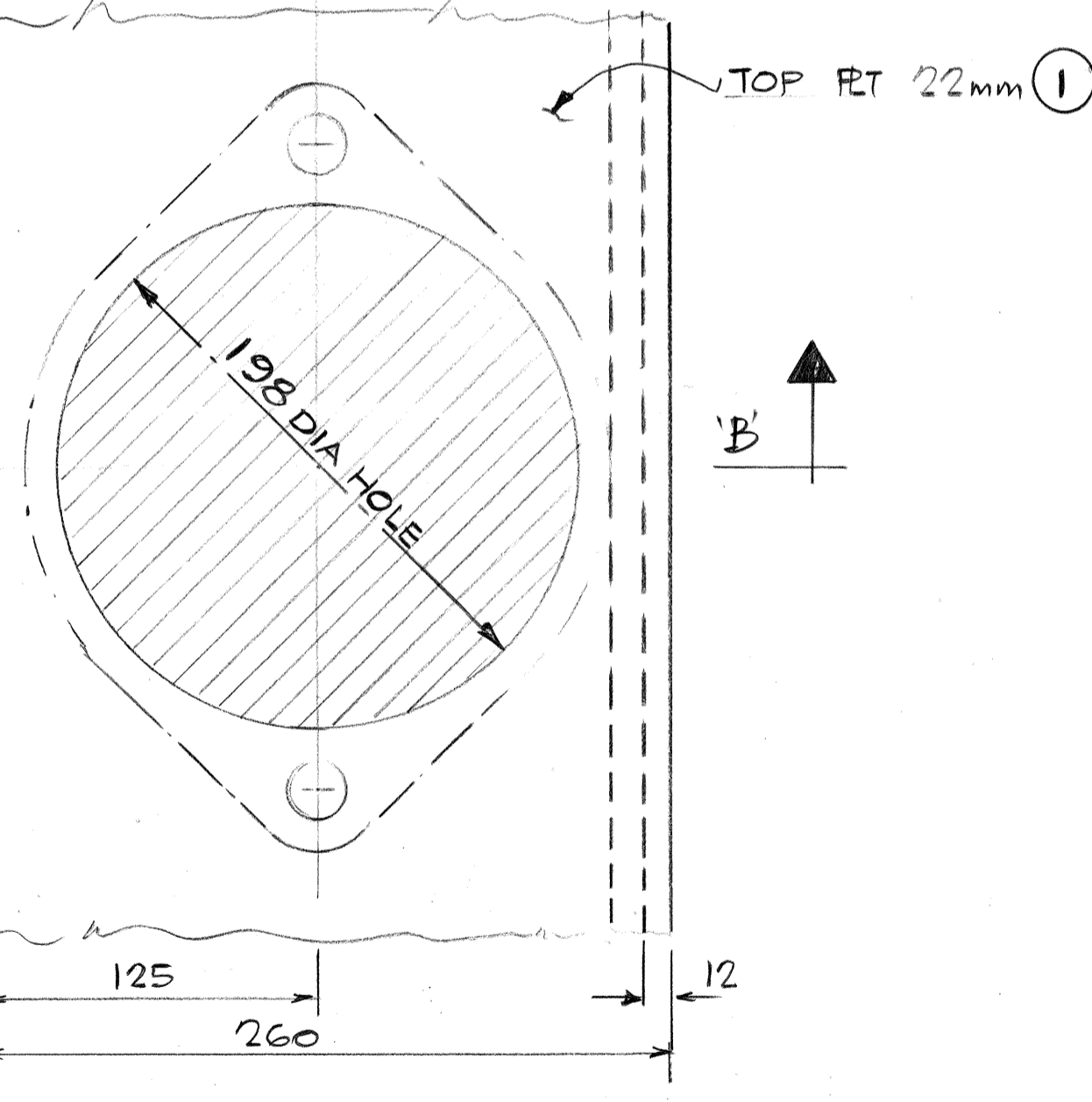
DET. 'C'



SECTION 'B-B'

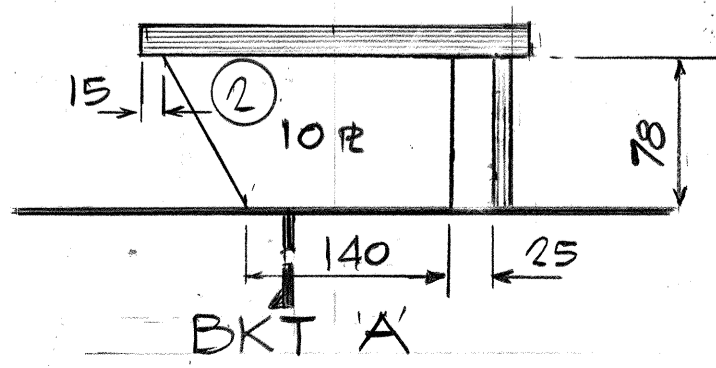


PLAN VIEW - MAIN DECK

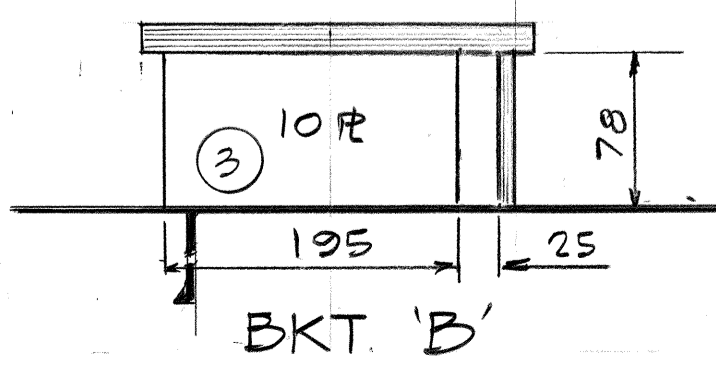


PLAN VIEW - TOP PLATE

1:2.5



BKT 'A'



BKT 'B'

## NOTES

1. WELDING  $35^\circ V$
2. REF. DWG. ARRGT-AIR BUBBLER 23-0716-02
3. POSITION OF HOLES TO BE CHECKED FROM MACHINE
4. WEIGHT OF UNIT 6120 KGS

## MATERIAL

PLATES SHT. N° A11

SHAPES SHT N° A8



SHIPBUILDERS,  
SHIP REPAIRERS,  
GENERAL ENGINEERS

Vancouver Division  
P.O. Box 86099, North Vancouver,  
British Columbia, Canada V7L 4J6  
Victoria Division  
P.O. Box 1030, Victoria,  
British Columbia, V8W 2S9

DIVISION  
VANCOUVER

HULL 110 JOB No.  
OWNERS CANADIAN COAST GUARD

App'd/App'n Date				

DRAWN R.S.	CHECKED	APPROVED 
---------------	---------	--------------



Canadian  
Coast Guard

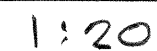
Garde côtière  
canadienne

Vessel  
Navire TYPE 1200 ICEBREAKER

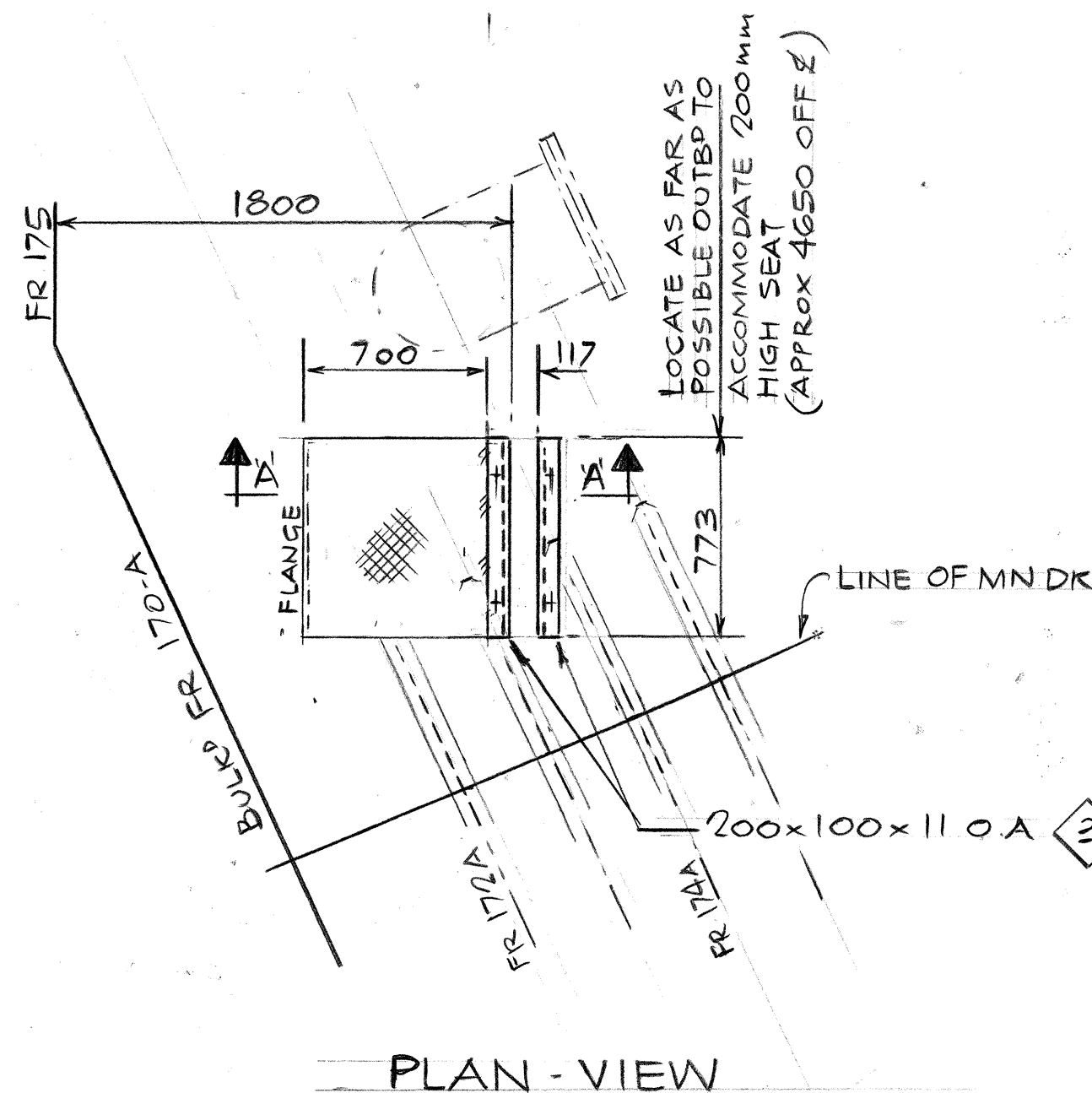
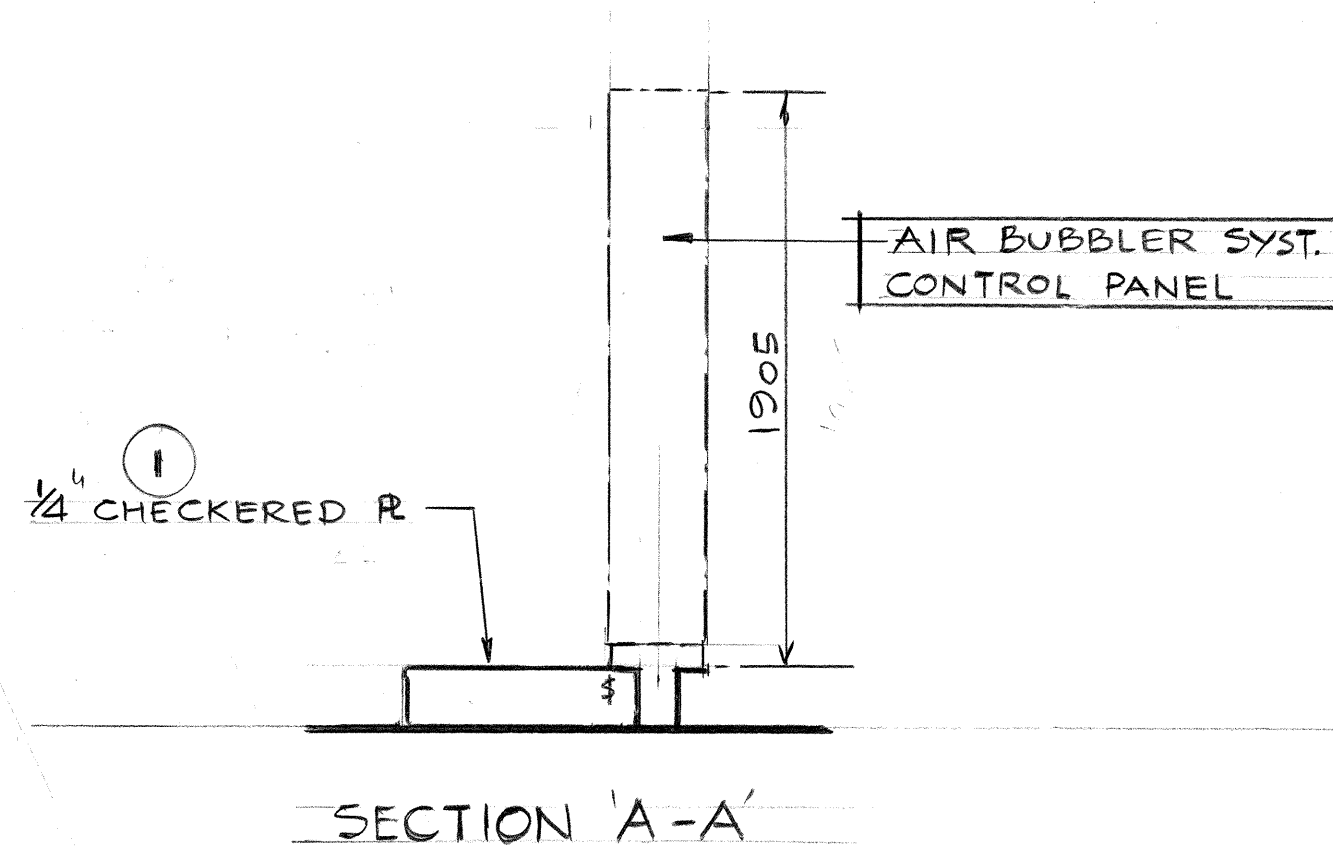
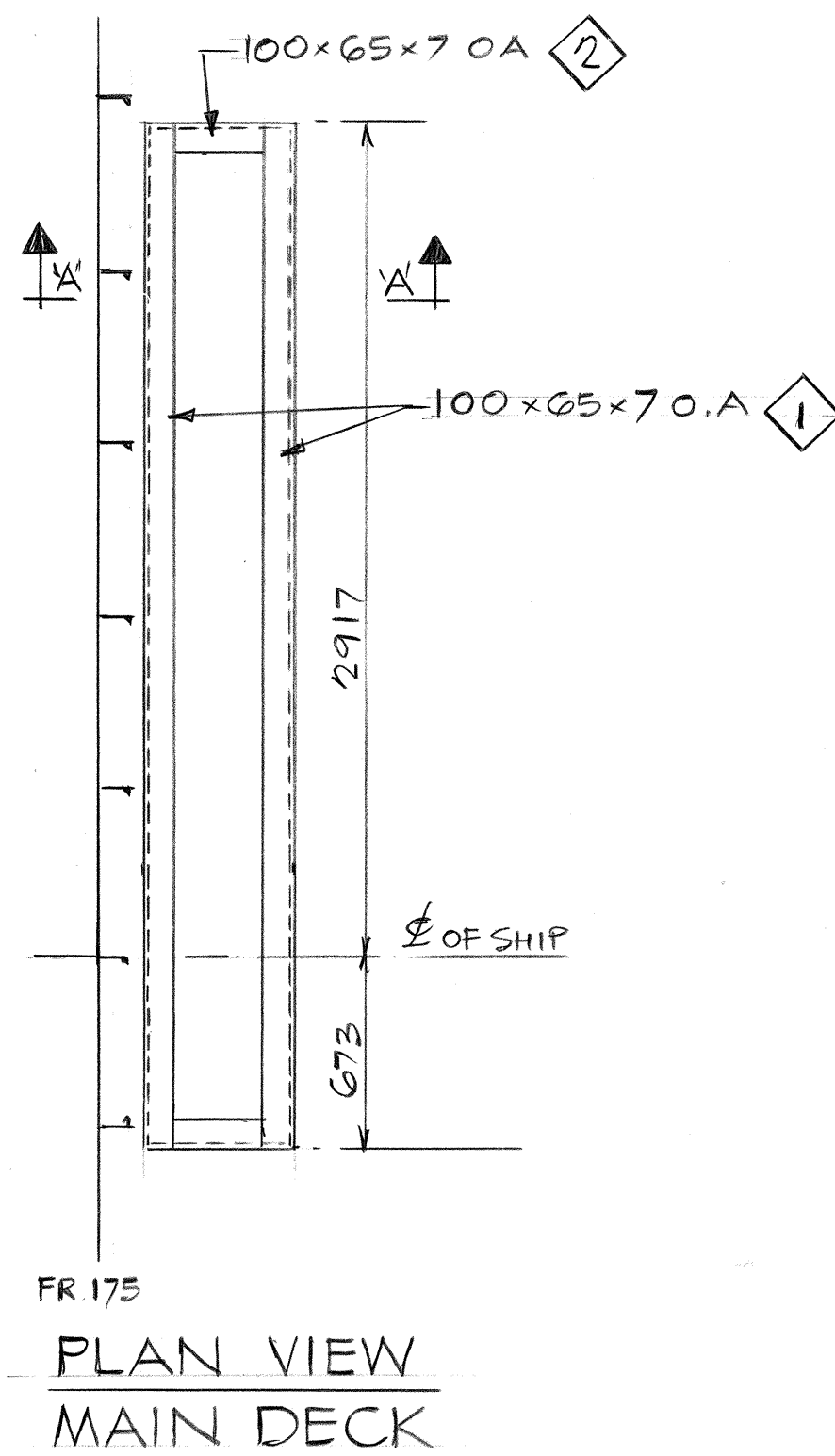
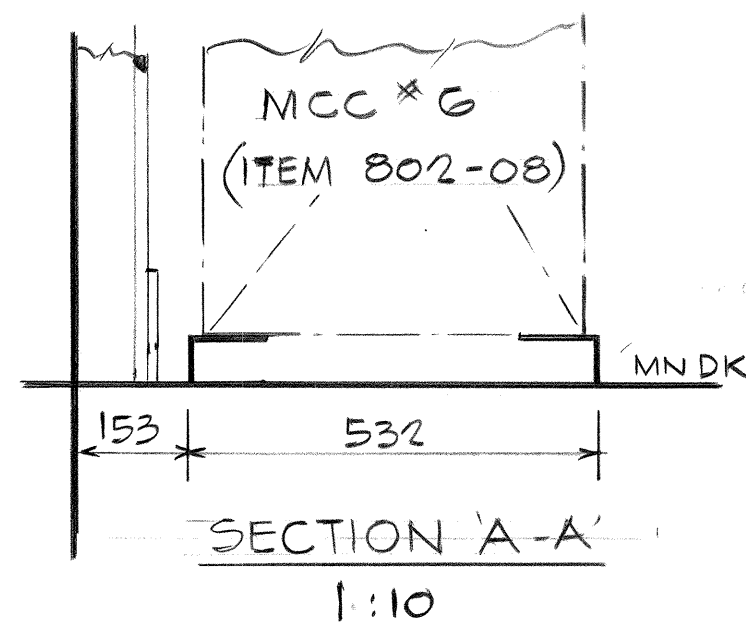
Drg. Title  
Dess. titre  
SEAT FOR UNIT \*503 ZONE 016

AIR BUBBLER COMPRESSOR  
SEAT

Date: 16 JULY 82 Scale/Echelle: 1:25 & AS SHOWN Rev.  
Contractor Drg. No.  
Entrepreneur dess. N° 1110 - 16 - 0016 - 01



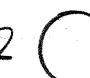
Contractor Drg. No.  
Entrepreneur dess. N° 1110 - 16 - 0016 - 02




## NOTES

1. CONSTRUCTION WELDING OF SEAT 35V
2. WELDING OF SEAT TO DK 35V 50-200

## MATERIAL


PLATE SHT N° A12 

SHAPES SHT N° A9 



SHIPBUILDERS,  
SHIP REPAIRERS,  
GENERAL ENGINEERS

Vancouver Division  
P.O. Box 86099, North Vancouver,  
British Columbia, Canada V7L 4J6  
Victoria Division  
P.O. Box 1030, Victoria,  
British Columbia, V8W 2S9

DIVISION VANCOUVER		HULL 110		JOB No.	
		OWNERS CANADIAN COAST GUARD			
App'd/App'n Date					
DRAWN R.S.	CHECKED	APPROVED 			



Canadian  
Coast Guard

Garde côtière  
canadienne

Vessel  
Navire TYPE 1200 ICEBREAKER

Drg. Title  
Dess. titre

SEATS FOR UNIT\*503 ZONE OIG

AIR BUBBLER MACHY COMPT

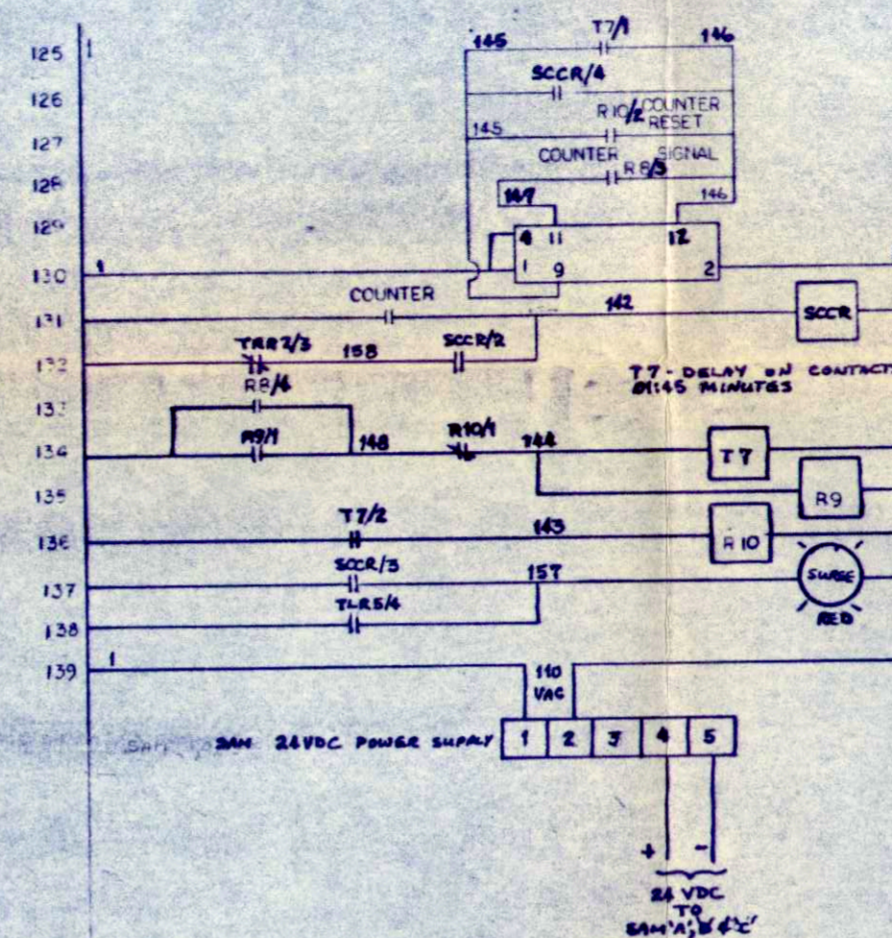
EL DO ITEM\* 802-08 M.C.C.\*6

\*821-02 AIR BUBBLER SYST CONTROL PNL

Date: Scale/Échelle: 1:25 Rev.

Contractor Drg. No.  
Entrepreneur dess. N° 1110-16-0016-03



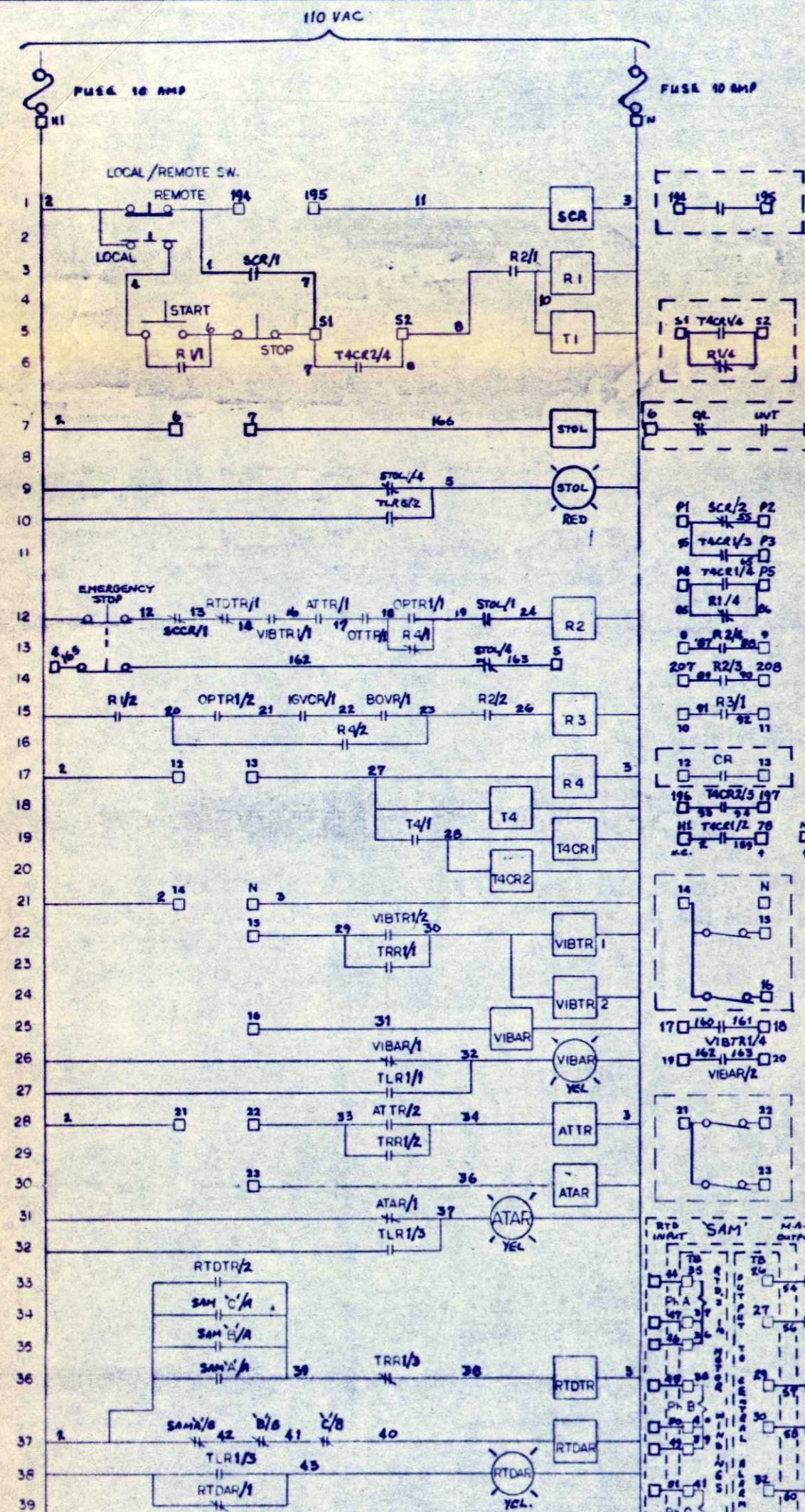


**SURGE COUNTER RESET**  
NOTE 1- WHEN A SURGE IS  
SENSED T7 COUNTS FOR  
ONE MIN. FORTY-FIVE SEC.  
IF DURING THIS PERIOD  
THE COUNTER REGISTERS  
SURGES THE COMP. IS SHUT  
DOWN OTHERWISE T7-RID  
RESET COUNTER TO ZERO

KEY DIAGRAM  
BASIC PRINCIPAL OF OPERATION  
COMPRESSOR CONTROL PANEL

**AMPOWER CANADA**  
(1982) LTD.  
ST. CATHARINES, ONTARIO, L2M 6S9

DO NOT SCALE THIS DRAWING



FROM MAIN CONTROL PANEL  
SENSE START CONTACTS

FROM PORT COMP. CONTROL  
PANEL  
START SEQUENCING CONTACTS

FROM 4160V STARTER  
OVERLOAD & UNDERVOLTAGE  
TRIP SIGNAL

TO PORT COMP. CONTROL  
PANEL  
START SEQUENCING CONTACTS

TO CENTRAL ALARM SYSTEM  
SHT 4 LINE 110/113

TO MAIN CONTROL PANEL  
TRIP INDICATION

TO 4160V STARTER  
START/STOP CONTACTS

AUX CONTACTS FROM 4160V STARTER  
INDICATE STARTER CLOSED

REMOTE OUTPUT COMP. RUNNING

REMOTE OUTPUT VIBRATION WHEN  
COMP. RUNNING

VIBRATION SWITCH  
WIRED BY VENDOR

TRIP CONTACTS OPEN AT  
MM/SEC. DELAY SEC.

ALARM CONTACTS OPEN AT  
MM/SEC. DELAY SEC.

REMOTE OUTPUT VIBRATION TRIP

REMOTE OUTPUT VIBRATION ALARM

TO 33- DISCHARGE AIR TEMP.  
TRIP CONTACTS OPEN AT 120°C

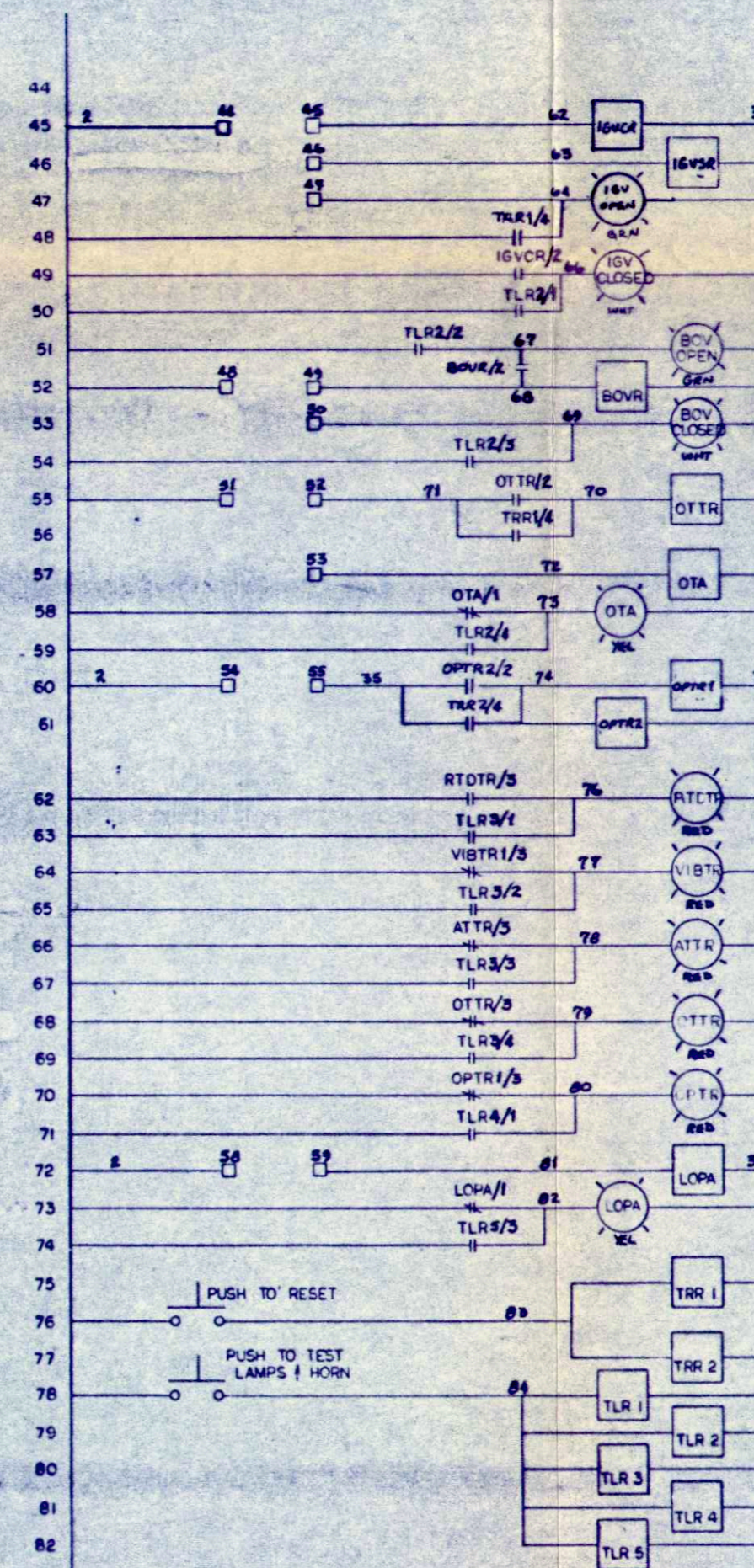
ALARM CONTACTS OPERATION  
TP-36 DISCHARGE AIR TEMP.

FOR CENTRAL ALARM SYSTEM  
SEPARATE ANALOGUE SENSOR  
SUPPLIED FOR DISCH. AIR  
TEMP. AUTONICA PT-100  
100 OHMS ± 0.1°C - RTD -

RTD RESISTANCE INPUT TO  
"SAM"

ANALOGUE OUTPUT TO CENTRAL  
ALARM SYSTEM  
OUTPUT IS 4 TO 20 MA. FOR  
0 TO 120°C

RES.	SAM	TEMP
120	4.0	0
160	8.0	50
200	12.0	100
224	16.6	130
241	19.8	160
291	25.0	200



NOTE:- THIS DRAWING RELATES TO THE ORIGINAL DRAW. NO. 23913 COMPASS REPAIR U.K.  
PORT COMPRESSOR SHTS 162 OF 4  
STBD COMPRESSOR SHTS 364 OF 4

IGV LIMIT SWITCHES  
(WIRED BY VENDOR)

IGV CLOSED LSW 10  
MAKE WHEN IGV CLOSED

IGV OPEN LSW 11  
BREAK WHEN IGV 30° TO -10°

IGV OPEN LSW 12  
BREAK WHEN IGV -10°

BOV POSITION INDICATION  
SIGNAL FROM MAIN CONTROL  
PANEL

TS36 LUBE OIL TEMP. SW.  
TRIP CONTACTS OPEN AT 70°C

ALARM CONTACTS OPEN AT 65°C  
PS-38 LUBE OIL TEMP.  
FOR CENTRAL ALARM SYSTEM  
SEPARATE ANALOGUE SENSOR  
SUPPLIED - AUTONICA PT-100  
100 OHMS ± 0.1°C - RTD -

PS-38 LUBE OIL PRESS. SW.  
CONTACTS CLOSE 140 KPA RISING  
OPEN AT 80 KPA FALLING

TO MAIN CONTROL PANEL  
LUBE OIL PRESS. TRIP SIGNAL

LOW OIL ALARM PS 12  
(WIRED BY VENDORS)

CLOSES AT 40 KPA RISING  
OPENS AT 110 KPA FALLING

REMOTE OUTPUT LOW OIL PRESS.  
ALARM

PS-38 FOR CENTRAL ALARM  
SEPARATE ANALOGUE SENSOR  
SUPPLIED FOR OIL PRESS.  
AUTONICA PT-100. SENSOR  
677/20 24V - 45 MA. SUPPLY.  
OUTPUT 4-20 MA. 0-250 KPA

1	APR 87	LINE 12 TEE 6-7 REMOVED STOL/1 ADDED	N	APR 87	LINE 48 ADD TLR1/4 LAMP TEST TO 10V OPEN	G	APR 86	LINE 12, EMERGENCY STOP TITLE ON SW.
2	APR 87	LINE 14 ADD CONTACTS TO EMERGENCY STOP/1/2	G	APR 86	LINE CO. BTWN 52 AND 53 PRESSURE SW WAS NC	G	APR 86	LINE 11, PRI BTWN S1 AND S2 WAS NO NCW NC.
3	APR 87	EDITORIAL NOTES REVISED				G	APR 86	LINE 9, DELETED CIRCUIT BTWN SSCR AND
4	APR 87	LINE 249 ADD RELAY STOL & STOL LAMP/1/2	G	APR 86	LINE 52, MAIN CONTROL PANEL CCT BTWN			SR2. CONNECT SSCR TO S1 AND SR2 TO S2
5	APR 87	TERMINAL & WIRE NO'S TO PRODUCTION AS IS.						RESP. LINE 10.
6	APR 87	ADD AC LINE FUSES 110VAC @ 10 AMPS	G	APR 86	LINES 279(275) AND 280(276) WAS NO NCW REQ'D NC.			ALL LOCAL/REMOTE AND MANUAL/AUTO SW'S
7	APR 86	LINES: 62-RTDTR: 64-VIBTR: 66-ATTR: 68-OTTR:	G	APR 86	LINES 44 AND 45 DELETED, WAS DUPLICATE OF			(BEING ONLY 2 POS'N) ARE SHOWN IN REMOTE OR
8	APR 86	70-OPTR: TITLES ON LIGHTS.	G	APR 86	ATAR TITLE ON LIGHT, LINE 37.			AUTO POS'N.

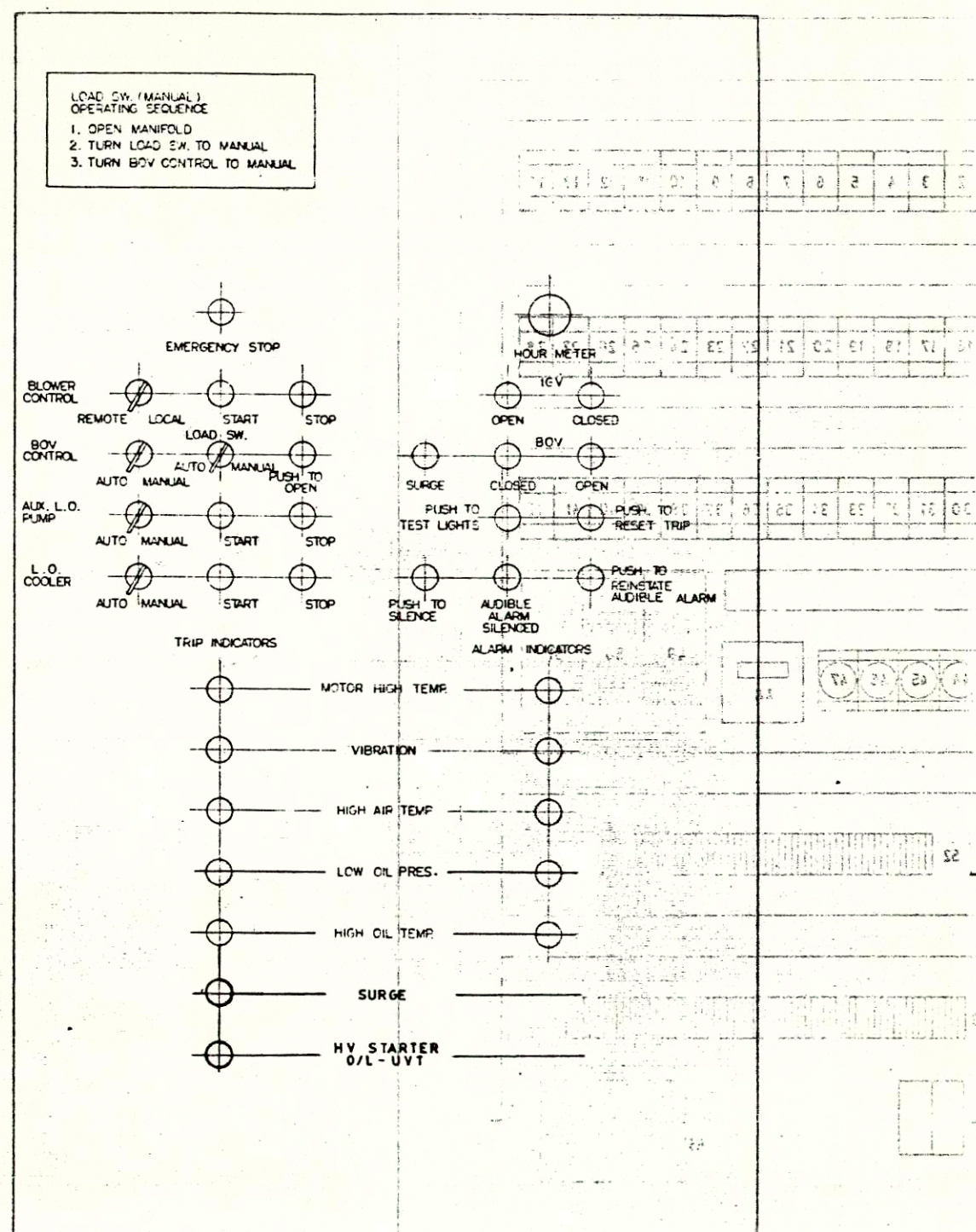
1	APR 87	PORT & STBD PANEL DRAWINGS REPRODUCED	N	APR 87	PORT & STBD PANEL DRAWINGS REPRODUCED	N	APR 87	PORT & STBD PANEL DRAWINGS REPRODUCED
2	APR 87	PORT & STBD CIRCUITS IDENTIFICATION	G	APR 86	PORT & STBD CIRCUITS IDENTIFICATION	G	APR 86	PORT & STBD CIRCUITS IDENTIFICATION
3	APR 86	NOTE: REPORT AND STBD PANEL CCTS 4-CPN	G	APR 86	NOTE: REPORT AND STBD PANEL CCTS 4-CPN	G	APR 86	NOTE: REPORT AND STBD PANEL CCTS 4-CPN
4	MAR 86	LINES 33 TO 39, 40 TO 43 DELETED.	F	MAR 86	LINES 33 TO 39, 40 TO 43 DELETED.	F	MAR 86	LINES 33 TO 39, 40 TO 43 DELETED.
5	DATE	REVISIONS	DATE	REVISIONS	DATE	REVISIONS	DATE	REVISIONS

THIS DRAWING AND THE DESIGN  
ARE EXHIBITED TO OTHERS WITH  
THE UNDERSTANDING THAT IT  
WILL BE CONSIDERED CONFIDENTIAL  
AND NOT USED FOR  
MANUFACTURING WITHOUT  
FORMAL CONSENT FROM THE  
COMPANY

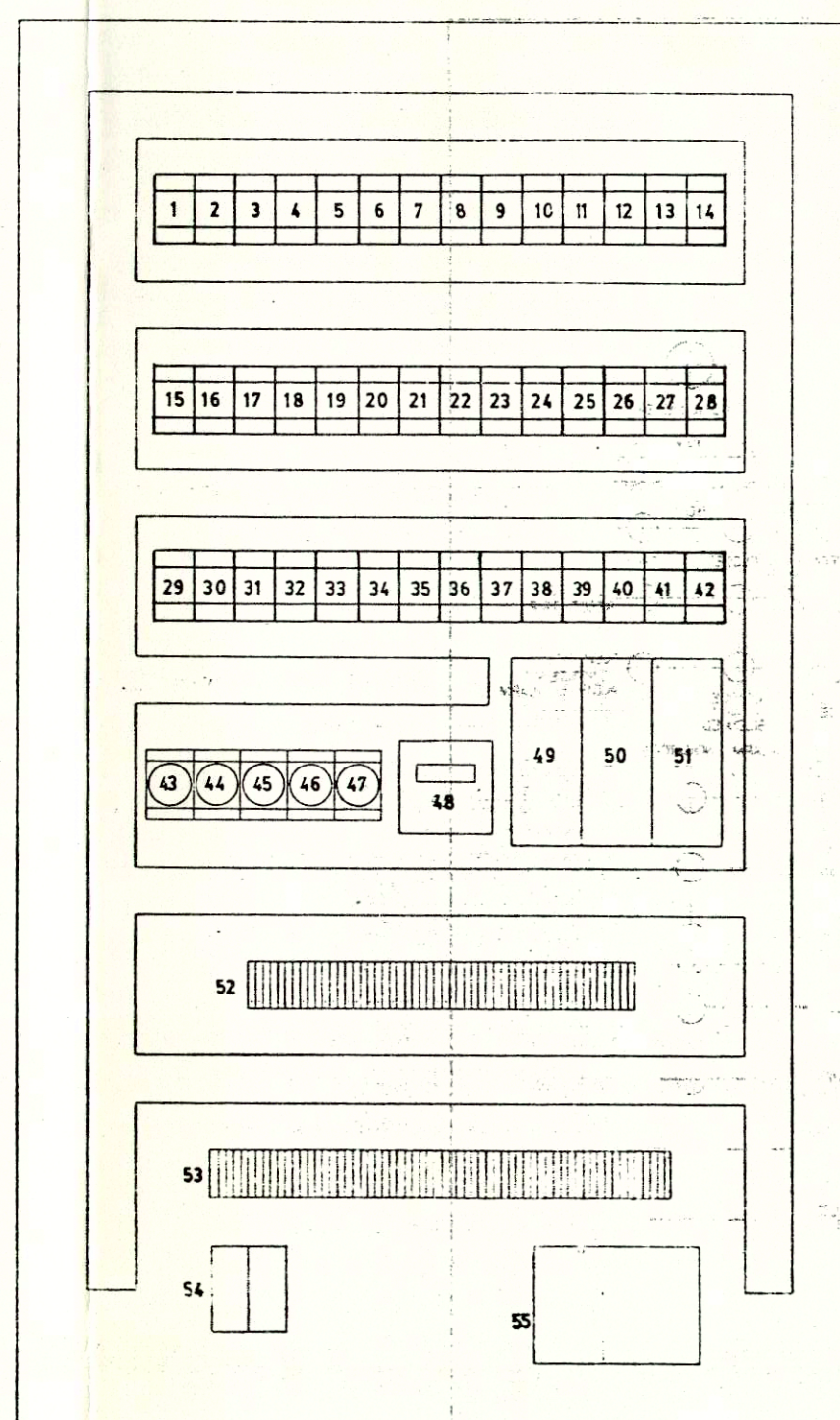
JOB No.	DATE	CUSTOMER
		AMPOWER CANADA (1982) LTD.
		ST. CATHARINES, ONTARIO L2M 6S9
TITLE	KEY DIAGRAM BASIC PRINCIPAL OF OPERATION COMPRESSOR CONTROL PANEL	
SCALE	DATE FEB. 4, 86	DRAWN BY E. C.
		APPROVED BY
Dwg. No.	E 39313	REV. 1
SHEET	3 OF 4	

DO NOT SCALE THIS DRAWING





DOOR



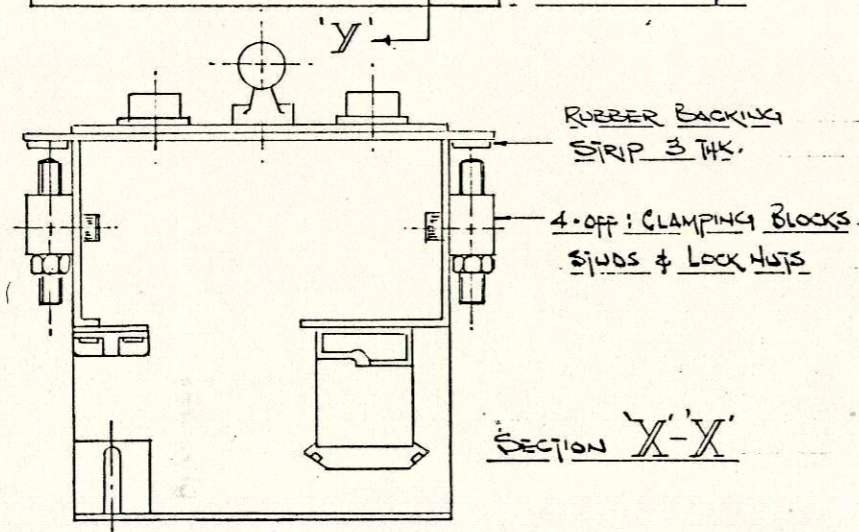
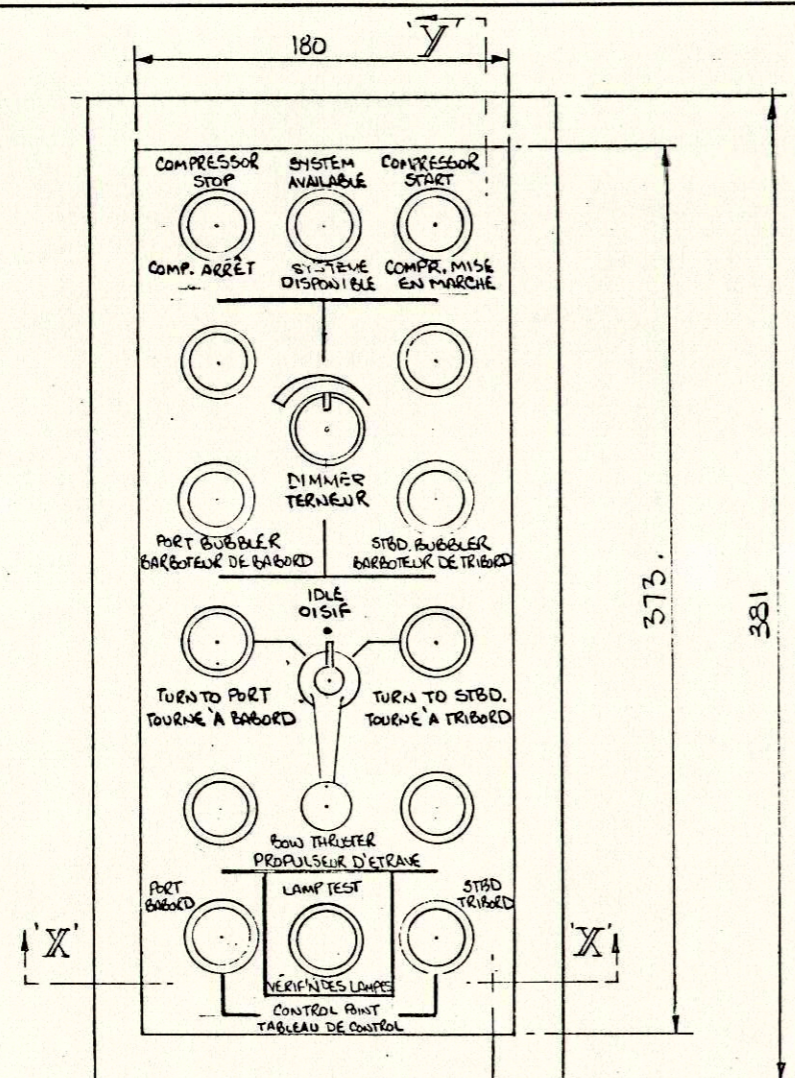
PAN

# LEGEND

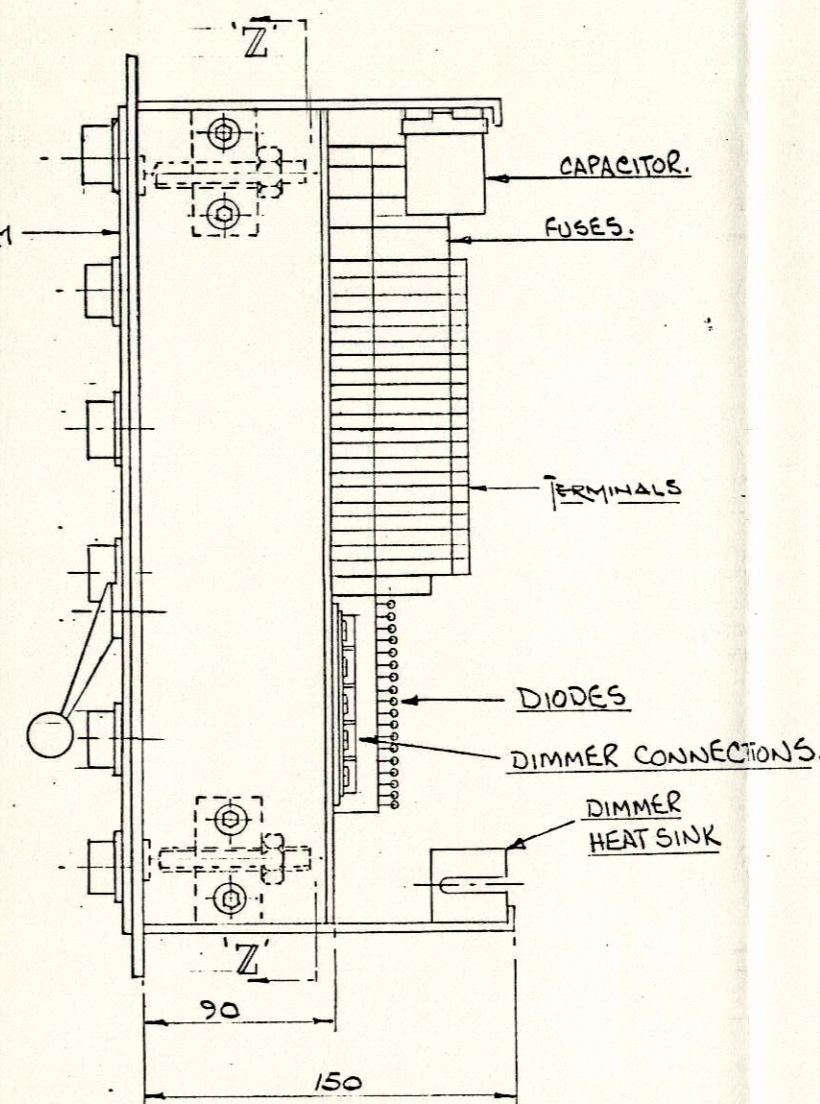
1. SCR START CONTROL RELAY
2. R1 RELAY ONE
3. R2 RELAY TWO
4. R3 RELAY THREE
5. T4CR1 TIMER FOUR CONTROL RELAY ONE
6. R4 RELAY FOUR
7. VICTR1 VIBRATION TRIP RELAY ONE
8. VICTR2 VIBRATION TRIP RELAY TWO
9. VIGAR VIBRATION ALARM RELAY
10. ATTR AIR TEMPERATURE TRIP RELAY
11. ATAP AIR TEMPERATURE ALARM RELAY
12. PTOTP MAIN MOTOR RTD TRIP RELAY
13. STAKE SPARE RELAY
14. PTODAR MAIN MOTOR ALARM RELAY
15. IGWCF INLET GUIDE VANE CONTROL RELAY
16. INWSP INLET GUIDE VANE SURGE RELAY
17. DUVR BLOW OFF VALVE RELAY
18. OTTR OIL TEMPERATURE TRIP RELAY
19. CTA OIL TEMPERATURE ALARM RELAY
20. OPTP1 OIL PRESSURE TRIP RELAY ONE
21. OPTP2 OIL PRESSURE TRIP RELAY TWO
22. LOPR LOW OIL PRESSURE ALARM RELAY
23. TRP1 TRIP RESET RELAY ONE
24. TRP2 TRIP RESET RELAY TWO
25. TLR1 LAMP TEST RELAY ONE
26. TLR2 LAMP TEST RELAY TWO
27. TLR3 LAMP TEST RELAY THREE
28. STOL STARTER OVERLOAD AND UNDERVOLTAGE RELAY
29. TLR4 LAMP TEST RELAY FOUR
30. TLR5 LAMP TEST RELAY FIVE
31. R5 RELAY FIVE
32. R6 RELAY SIX
33. IR COMPRESSOR FULL LOAD RELAY
34. R7 RELAY SEVEN
35. BOVO BLOW OFF VALVE OPEN RELAY
36. R8 RELAY EIGHT
37. HR HORN RELAY
38. SIL HORN SILENCE RELAY
39. SCCR SURGE COUNT CONTROL RELAY
40. R9 RELAY NINE
41. R10 RELAY TEN
42. T4CR2 TIMER FOUR CONTROL RELAY TWO
43. T1 TIMER ONE - LUBE OIL COOLER STARTER - DELAY OFF 10 MIN.
44. T4 TIMER FOUR - MAIN MOTOR CONTACTOR MAKE - DELAY ON 15 SEC.
45. T5 TIMER FIVE - AUX. LUBE OIL PUMP STARTER - DELAY OFF 60 SEC.
46. T6 TIMER SIX - BLOW OFF V/V DELAY CLOSE ON SURGE - DELAY OFF 15 SEC.
47. T7 TIMER SEVEN - SURGE COUNTER RESET - DELAY ON 1 MIN 45 SEC
48. COUNTER DIGITAL COUNTER FOR SURGE
49. SAM'A MAIN MOTOR WINDING RTD AMPLIFIER PHASE 'A'
50. SAM'B MAIN MOTOR WINDING RTD AMPLIFIER PHASE 'B'
51. SAM'C MAIN MOTOR WINDING RTD AMPLIFIER PHASE 'C'
52. (52)PORT TERMINAL BLOCKS - LEFT TO RIGHT - PORT PANEL  
A.C.H1.N.H1.N.190.191.192.193.200.205.206.151.152.80.81.186.187.84.85.H1.N.H1.N.H1.N.P1.P2.P3.P4.P5.51.52.62.63.64.65.66.67.68.69.N.14.15.16.21.22.23.44.45.46.47.276.277.278
53. (53)PORT TERMINAL BLOCKS - LEFT TO RIGHT - PORT PANEL  
48.51.52.53.54.55.26.27.28.29.30.31.32.33.34.58.59.60.61.70.71.72.73.74.75.76.78.79.82.83.67.10.11.12.13.56.57.90.91.8.9.17.18.19.20.88.89.86.87.35.36.37.38.39.40.41.42.43.44.45.46.47.48
52. (52)STBD TERMINAL BLOCKS - LEFT TO RIGHT - STBD PANEL  
A.C.H1.N.H1.N.H1.N.194.195.196.197.203.204.207.208.156.157.80.81.186.187.84.85.90.91.N.H1.N.P1.P2.P3.P4.P5.51.52.62.63.64.65.66.67.14.15.16.21.22.23.44.45.46.47.48.55.56.51.52.53.54.55.60.61.58.59
53. (53)STBD TERMINAL BLOCKS - LEFT TO RIGHT - STBD PANEL  
35.36.37.38.39.40.41.42.43.26.27.28.29.30.31.32.33.34.68.69.70.71.72.73.74.75.76.77.78.79.82.83.67.10.11.12.13.56.57.8.9.17.18.19.20.86.87.88.89.4.5.6.7
54. F1 & F2 AC PANEL SUPPLY FUSES
55. 24VDC POWER SUPPLY FOR SAM'S 'A', 'B', & 'C'

4491 AB	1986	VERSATILE PACIFIC SHIPYARDS INC.	MILL 110
JOB NO.	DATE	CUSTOMER	
TITLE		AMPOWER CANADA (1982) LTD.	
LOCAL CONTROL PANEL LAYOUT		ST. CATHARINES, ONTARIO, L2M 6S9	
DOOR / PAN		Dwg. No. ACS-001-29 D (ENGLISH)	
SCALE	DATE	DRAWN BY	APPROVED BY
	FEB 86	CARMONA	
NO.		DATE	REVISIONS
2	APR 87	TERMINAL W CHANGES	
2	APR 87	RED RELAYS STOL & SPARE	
1	MAR 86	WARNING LABEL	

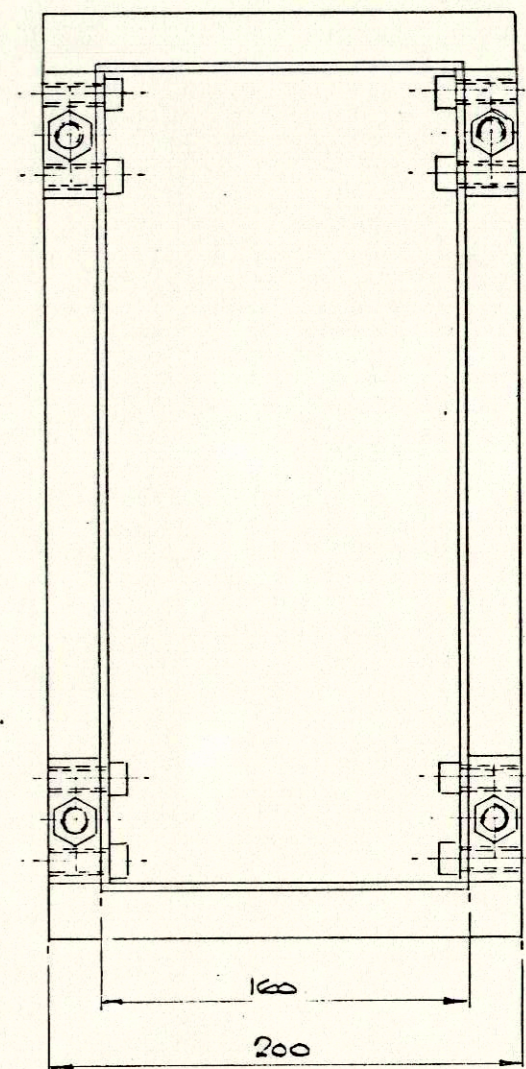
DO NOT SCALE THIS DRAWING



MIMIC DIAGRAM



Section 'Y'-'Y'

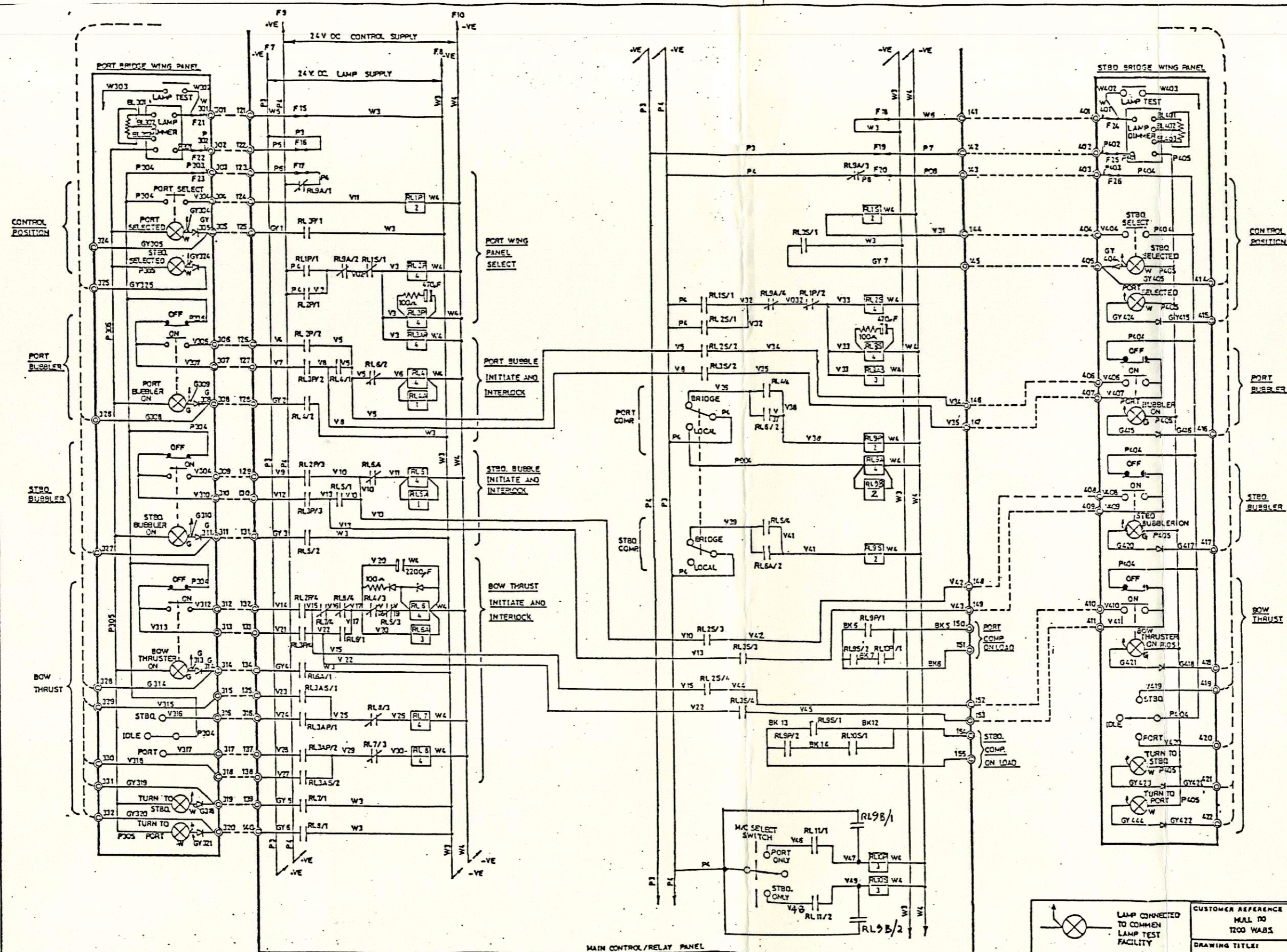


Section 'Z'-'Z'

REVISIONS	1 ORIGINAL ISSUE
ISSUE 2: MOD. P. 501, CUSTOMER REQ'S (MIMIC LAYOUT) 29.4.85	
ISSUE 3: MOD. BOW THRUST ON/OFF PUSH BUTTONS ADDED 21.29.4-85	
ISSUE 4: MOD. TO BE 'AS FITTED'. CLR 12-2-86.	



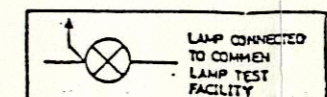
CUSTOMER REFERENCE <b>BURRARD-YARROW CORPN.</b> <u>1200-NAVAIDS.</u>		YCC REFERENCE <b>5128YCC/-</b> <b>-/C85-04-0256</b>		THIS DRAWING IS THE PROPERTY OF YCC INC. AND IS CONFIDENTIAL AND IS NOT TO BE COPIED OR DISCLOSED TO THIRD PARTIES WITHOUT THE CONSENT OF THE PROPRIETORS.
DRAWING TITLE: <b>GEN. ARRGT. OF MIMIC DIAGRAM &amp; DROP IN PANEL ASSEMBLY.</b>				
SCALE: <b>N.T.S.</b>				
YOUNG & CUNNINGHAM CANADA INC.  ST. CATHRINES, ONTARIO.		BY	DATE	DRAWING No.  <b>V15215/4 /A2</b>
	DRAWN	<b>D.S.</b>		
	TRACED			
	CHECKED			



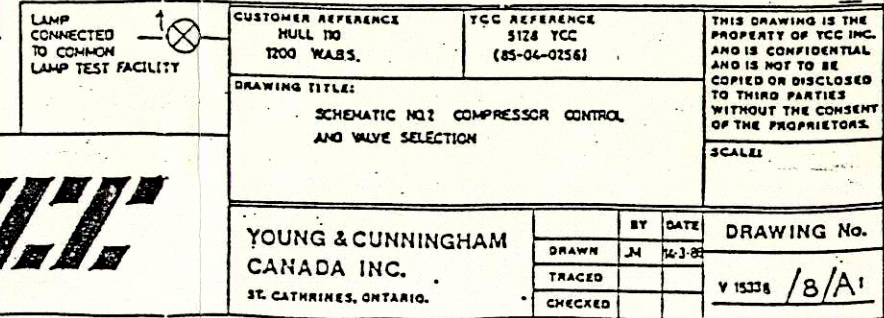
WIRING COLOUR CODE  
 P = PINK  
 W = WHITE  
 V = VIOLET  
 G = GREEN  
 GR = GREY

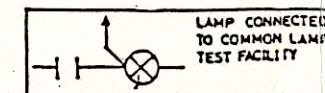
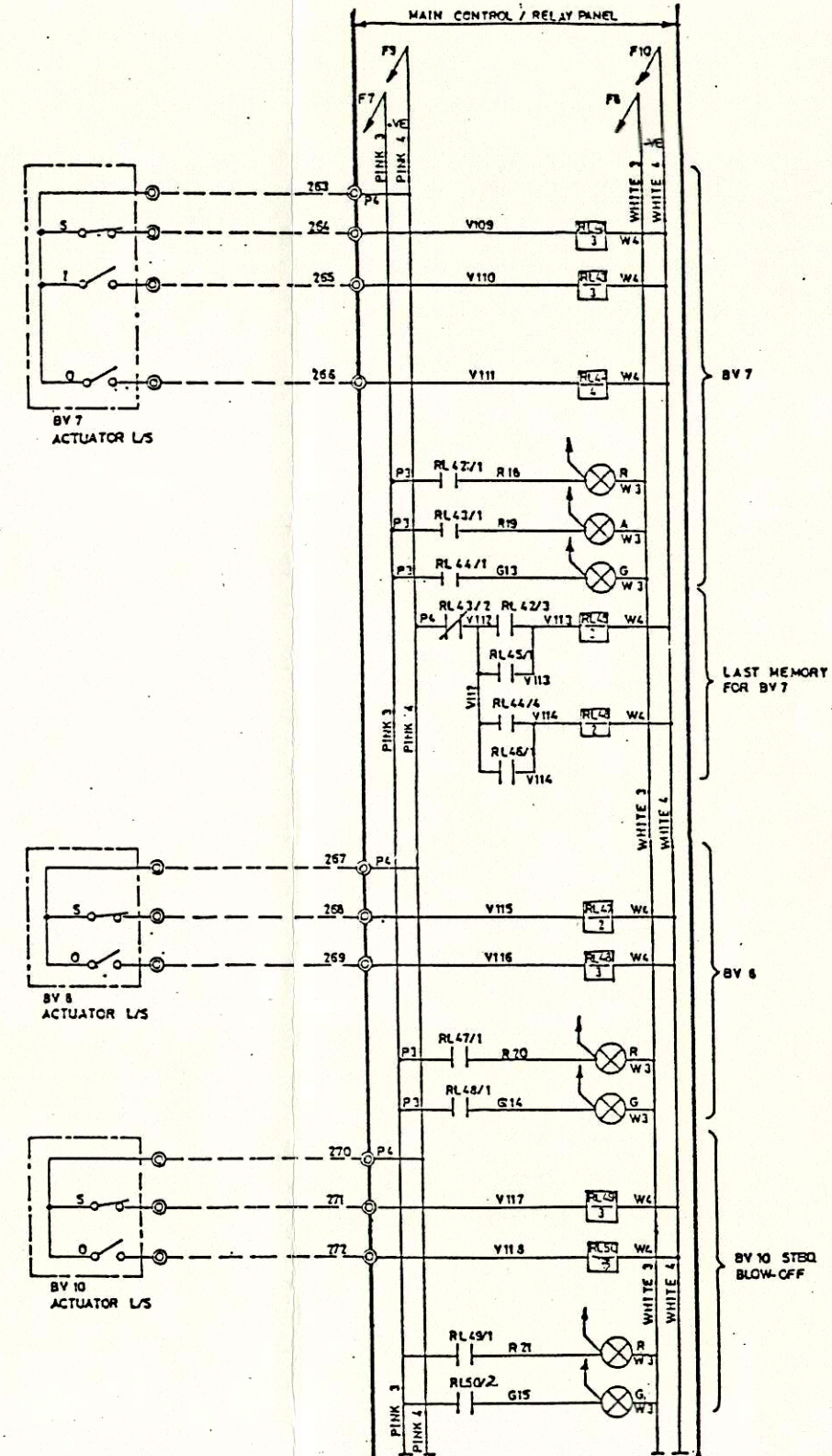
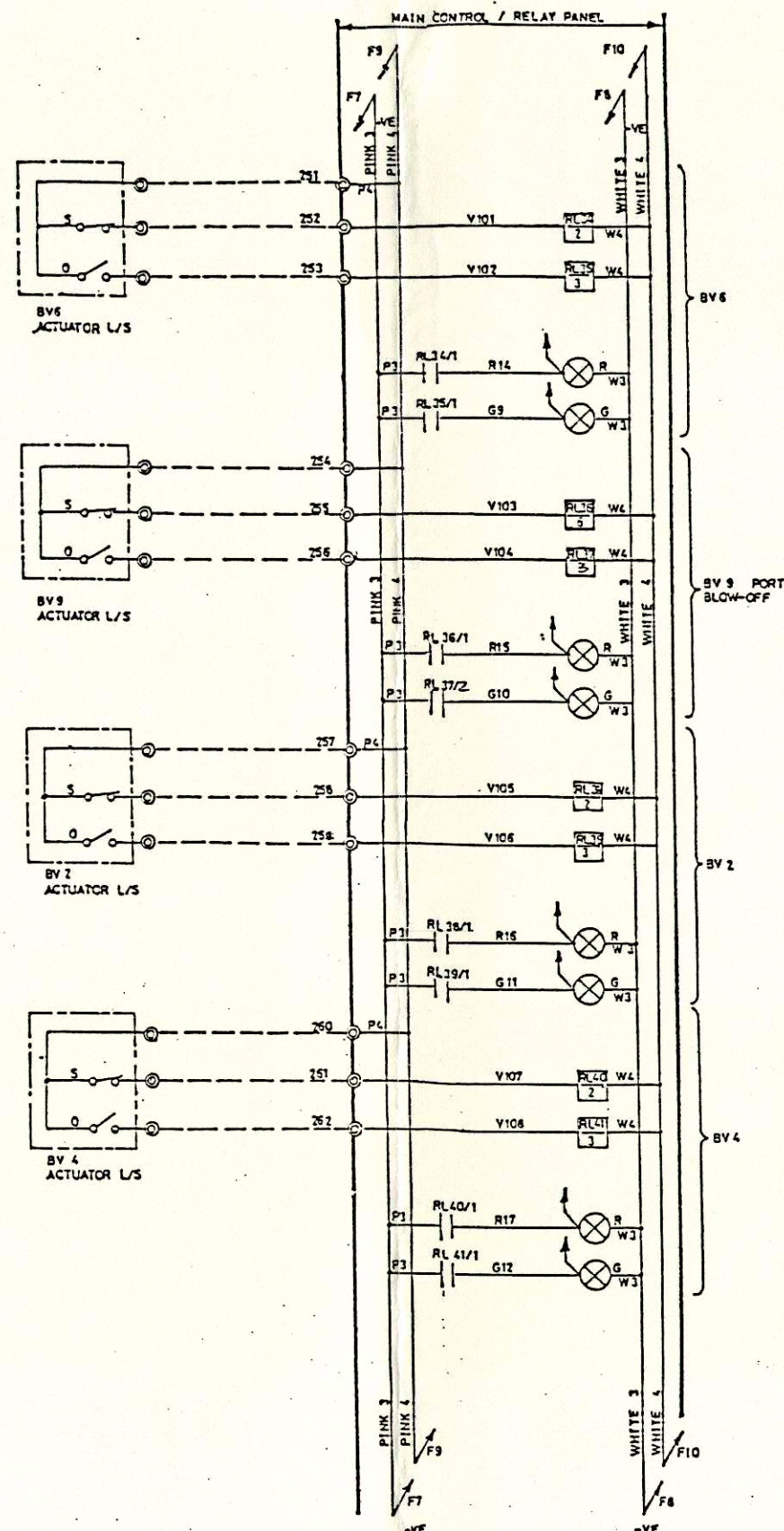
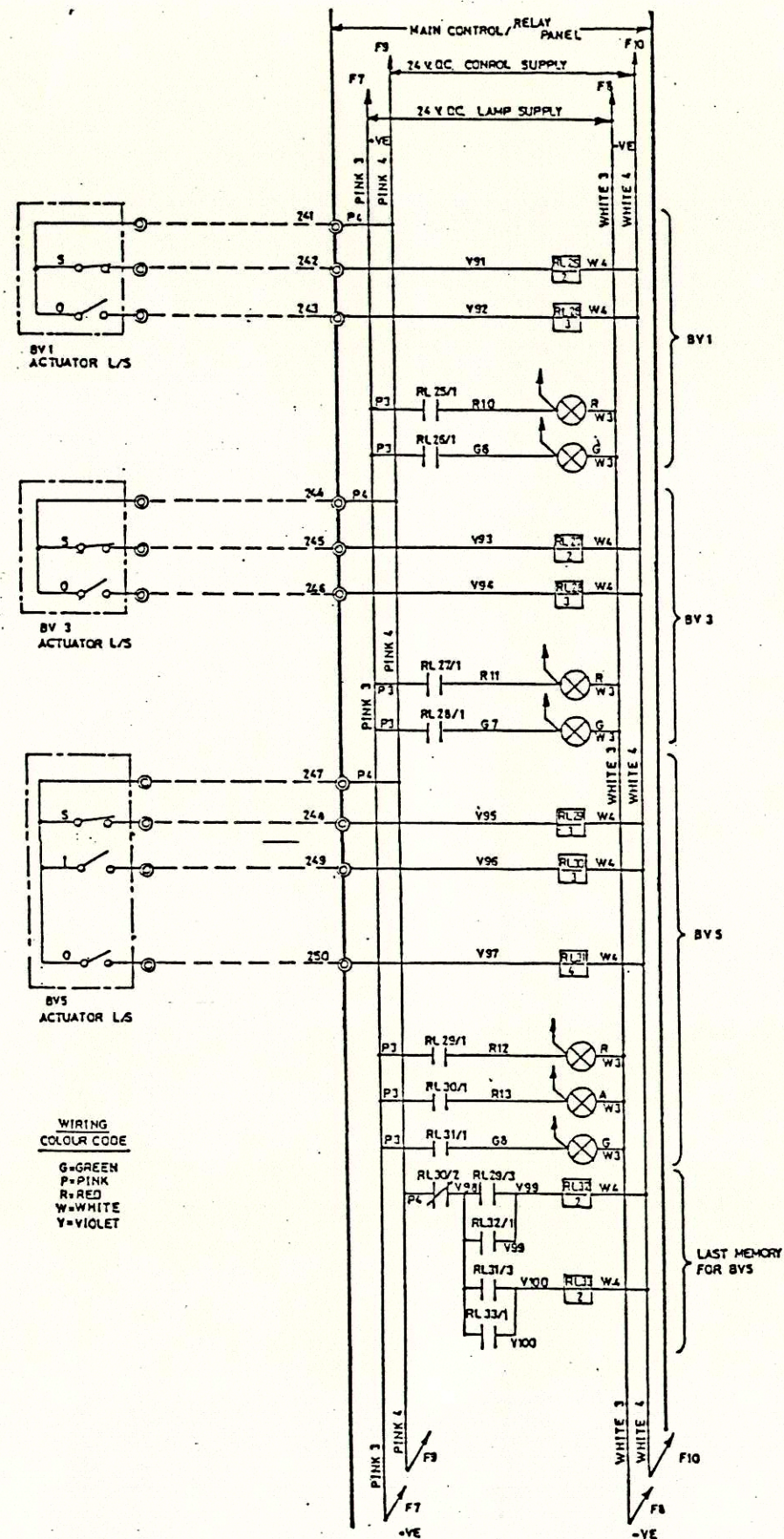
CONNECTIONS BETWEEN PORT & STBD WING PANELS		
PORT TERMINAL NUMBER	STBD TERMINAL NUMBER	
324	415	FROM
325	414	
326	418	
327	417	
328	418	
329	419	
330	420	
331	421	
332	422	

REVISIONS  
 1 ORIGINAL ISSUE  
 ISSUE 6 - WIRING COLOUR CODE ADDED IN W388  
 ISSUE 7 - RELAY RL9B ADDED PLUS CIRCUIT CHANGE ATTACHED TO M/C SELECT SW & RL10P & RL10S JES. 2.6.87



CUSTOMER REFERENCE MALL 100 WABS		YCC REFERENCE S128 YCC (85-06-0756)		THIS DRAWING IS THE PROPERTY OF YCC INC. AND IS CONFIDENTIAL AND IS NOT TO BE COPIED OR DISCLOSED TO THIRD PARTIES WITHOUT THE CONSENT OF THE PROPRIETORS.
DRAWING TITLE: SCHEMATIC N°1 BRIDGE WING PANEL CONTROL BUBBLE & BOW THRUST INITIATE				
SCALE:				
YOUNG & CUNNINGHAM CANADA INC. ST. CATHERINES, ONTARIO.		BY DATE	DRAWING NO. V 15337 / 7 / A1	

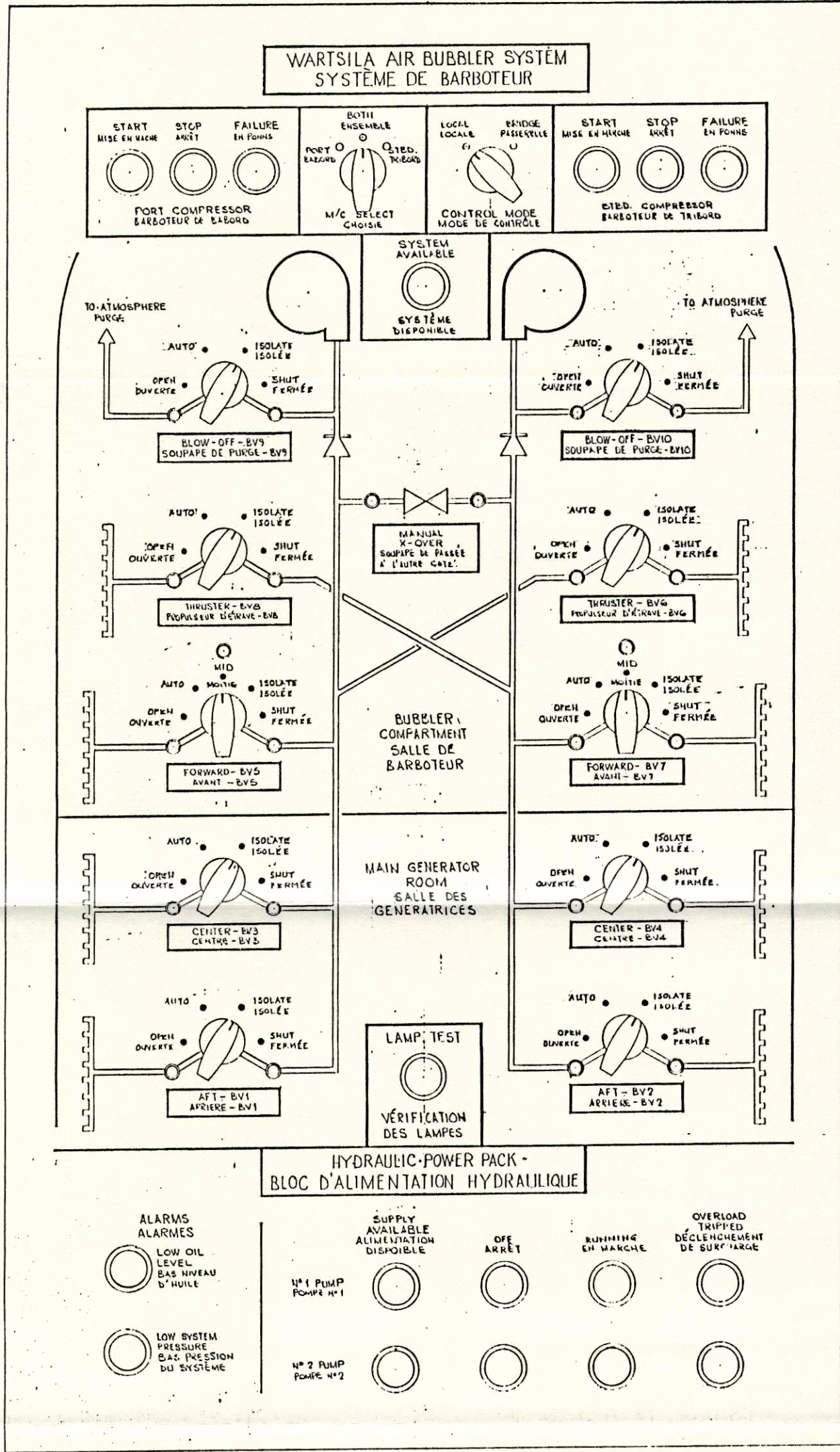




CUSTOMER REFERENCE HULL NO 1200 W.A.B.S.	YCC REFERENCE 5128 YCC (C55-04-0256)	THIS DRAWING IS THE PROPERTY OF YCC INC. AND IS CONFIDENTIAL AND IS NOT TO BE COPIED OR DISCLOSED TO THIRD PARTIES WITHOUT THE CONSENT OF THE PROPRIETORS.
DRAWING TITLE: SCHEMATIC NO.4, VALVE INDICATION & INTERLOCK.	SCALE:	
YOUNG & CUNNINGHAM CANADA INC. ST. CATHARINES, ONTARIO.	BY DATE	DRAWING No. Y15340/6/A1

REVISIONS	1 ORIGINAL ISSUE
ISSUE 1: WIRING CODE ADDED	JN 17/2/86
ISSUE 2: RL37 & RL38 CONTACT PREFIX CHANGED	183 45.97

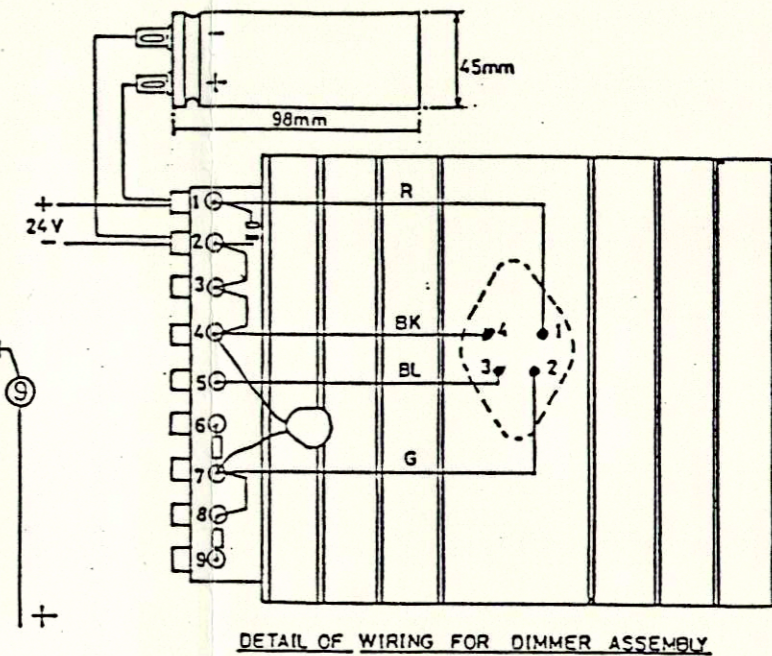
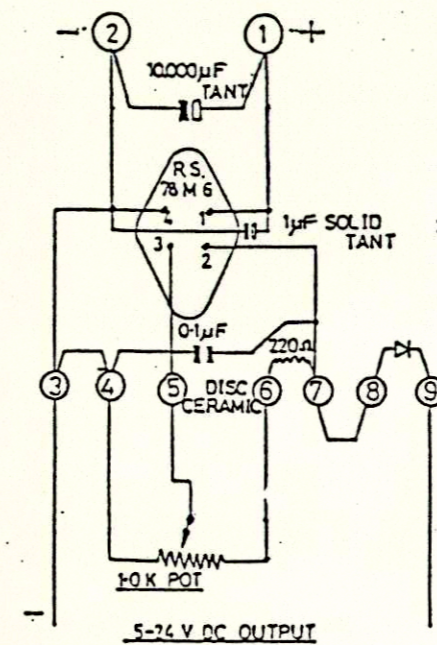
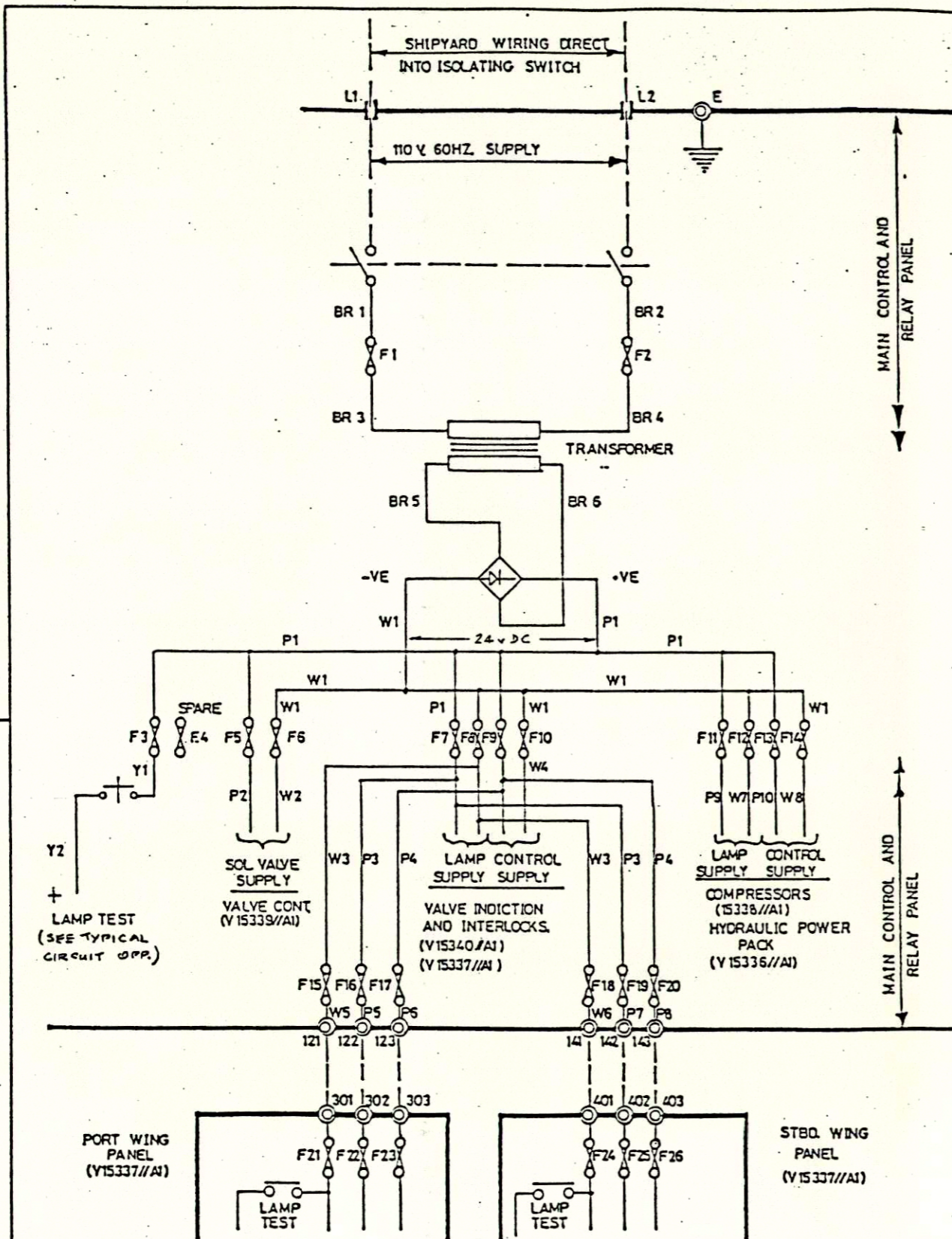
REVISIONS  
 1 ORIGINAL ISSUE  
 1.1 11.11.66  
 1.2 11.11.66  
 1.3 11.11.66  
 1.4 11.11.66  
 1.5 11.11.66  
 1.6 11.11.66  
 1.7 11.11.66  
 1.8 11.11.66  
 1.9 11.11.66  
 1.10 11.11.66  
 1.11 11.11.66  
 1.12 11.11.66  
 1.13 11.11.66  
 1.14 11.11.66  
 1.15 11.11.66  
 1.16 11.11.66  
 1.17 11.11.66  
 1.18 11.11.66  
 1.19 11.11.66  
 1.20 11.11.66  
 1.21 11.11.66  
 1.22 11.11.66  
 1.23 11.11.66  
 1.24 11.11.66  
 1.25 11.11.66  
 1.26 11.11.66  
 1.27 11.11.66  
 1.28 11.11.66  
 1.29 11.11.66  
 1.30 11.11.66  
 1.31 11.11.66  
 1.32 11.11.66  
 1.33 11.11.66  
 1.34 11.11.66  
 1.35 11.11.66  
 1.36 11.11.66  
 1.37 11.11.66  
 1.38 11.11.66  
 1.39 11.11.66  
 1.40 11.11.66  
 1.41 11.11.66  
 1.42 11.11.66  
 1.43 11.11.66  
 1.44 11.11.66  
 1.45 11.11.66  
 1.46 11.11.66  
 1.47 11.11.66  
 1.48 11.11.66  
 1.49 11.11.66  
 1.50 11.11.66  
 1.51 11.11.66  
 1.52 11.11.66  
 1.53 11.11.66  
 1.54 11.11.66  
 1.55 11.11.66  
 1.56 11.11.66  
 1.57 11.11.66  
 1.58 11.11.66  
 1.59 11.11.66  
 1.60 11.11.66  
 1.61 11.11.66  
 1.62 11.11.66  
 1.63 11.11.66  
 1.64 11.11.66  
 1.65 11.11.66  
 1.66 11.11.66  
 1.67 11.11.66  
 1.68 11.11.66  
 1.69 11.11.66  
 1.70 11.11.66  
 1.71 11.11.66  
 1.72 11.11.66  
 1.73 11.11.66  
 1.74 11.11.66  
 1.75 11.11.66  
 1.76 11.11.66  
 1.77 11.11.66  
 1.78 11.11.66  
 1.79 11.11.66  
 1.80 11.11.66  
 1.81 11.11.66  
 1.82 11.11.66  
 1.83 11.11.66  
 1.84 11.11.66  
 1.85 11.11.66  
 1.86 11.11.66  
 1.87 11.11.66  
 1.88 11.11.66  
 1.89 11.11.66  
 1.90 11.11.66  
 1.91 11.11.66  
 1.92 11.11.66  
 1.93 11.11.66  
 1.94 11.11.66  
 1.95 11.11.66  
 1.96 11.11.66  
 1.97 11.11.66  
 1.98 11.11.66  
 1.99 11.11.66  
 1.100 11.11.66



1.1 11.11.66

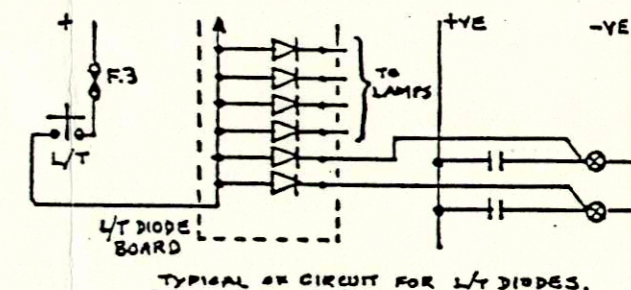


SEE DET. NO. 11550/11A, MIMIC ELECTRICAL PANEL.  
 685-04-0256  
 LAYOUT OF AIR BUBBLER SYSTEM  
 CONTROL PANEL MIMIC DIAGRAM.  
 YOUNG & CUNNINGHAM  
 CANADA INC.  
 11550/3/AO



REF.	CONTINUOUS RATING.	TYPE	
F1	10.0A	NIT	GEC R520
F2	10.0A	"	"
F3	4.0A	KLIPPON	SAKSI
F4	SPARE	"	"
F5	6.3A	"	"
F6	6.3A	"	"
F7	4.0A	"	"
F8	4.0A	"	"
F9	4.0A	"	"
F10	4.0A	"	"
F11	4.0A	"	"
F12	4.0A	"	"
F13	4.0A	"	"
F14	4.0A	"	"
F15	4.0A	"	"
F16	4.0A	"	"
F17	4.0A	"	"
F18	4.0A	"	"
F19	4.0A	"	"
F20	4.0A	"	"
F21	4.0A	"	"
F22	4.0A	"	"
F23	4.0A	"	"
F24	4.0A	"	"
F25	4.0A	"	"
F26	4.0A	"	"

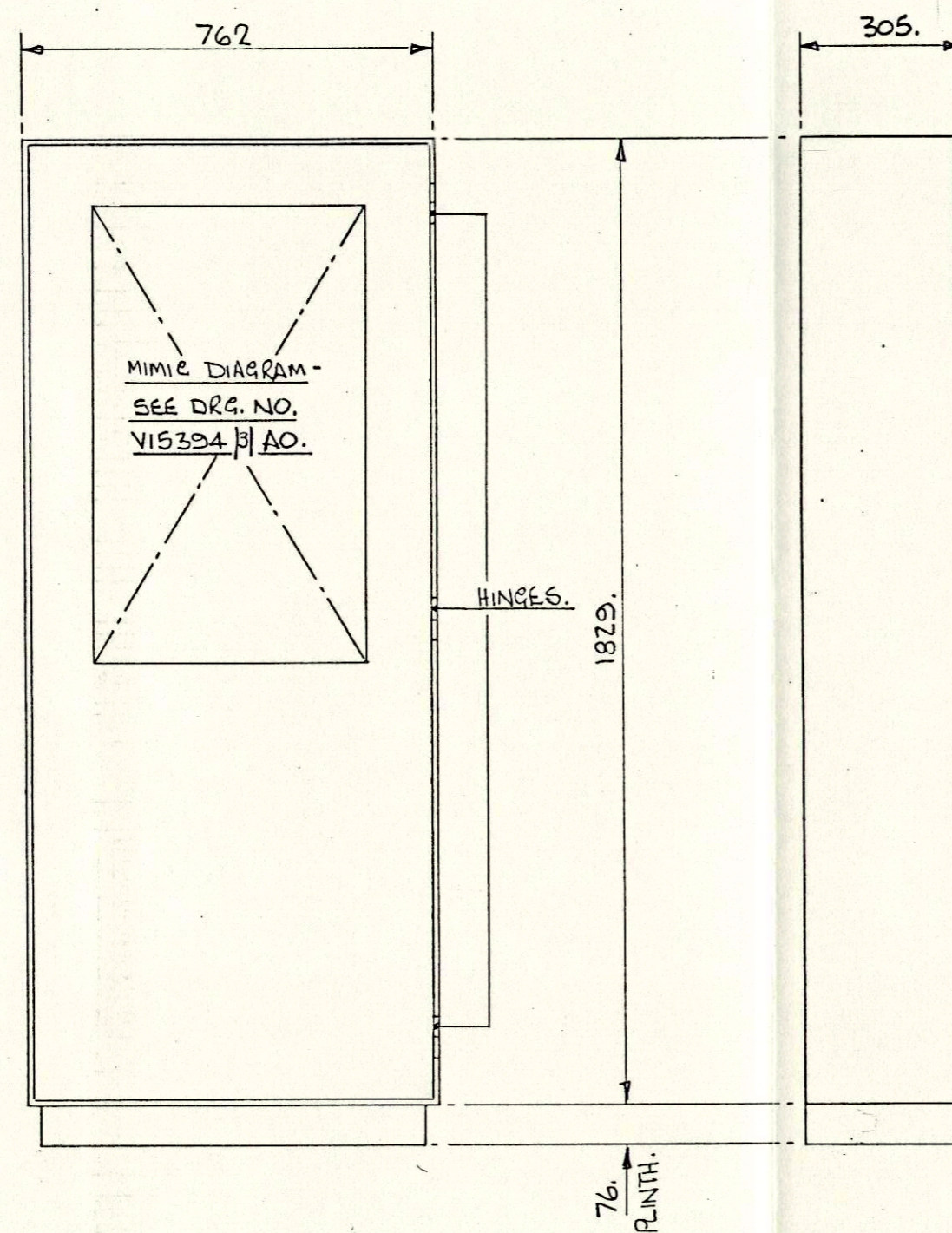
WIRING	COLOUR	CODE
BR	BROWN	
W	WHITE	
P	PINK	
Y	YELLOW	
R	RED	
BK	BLACK	
BL	BLUE	
G	GREEN	



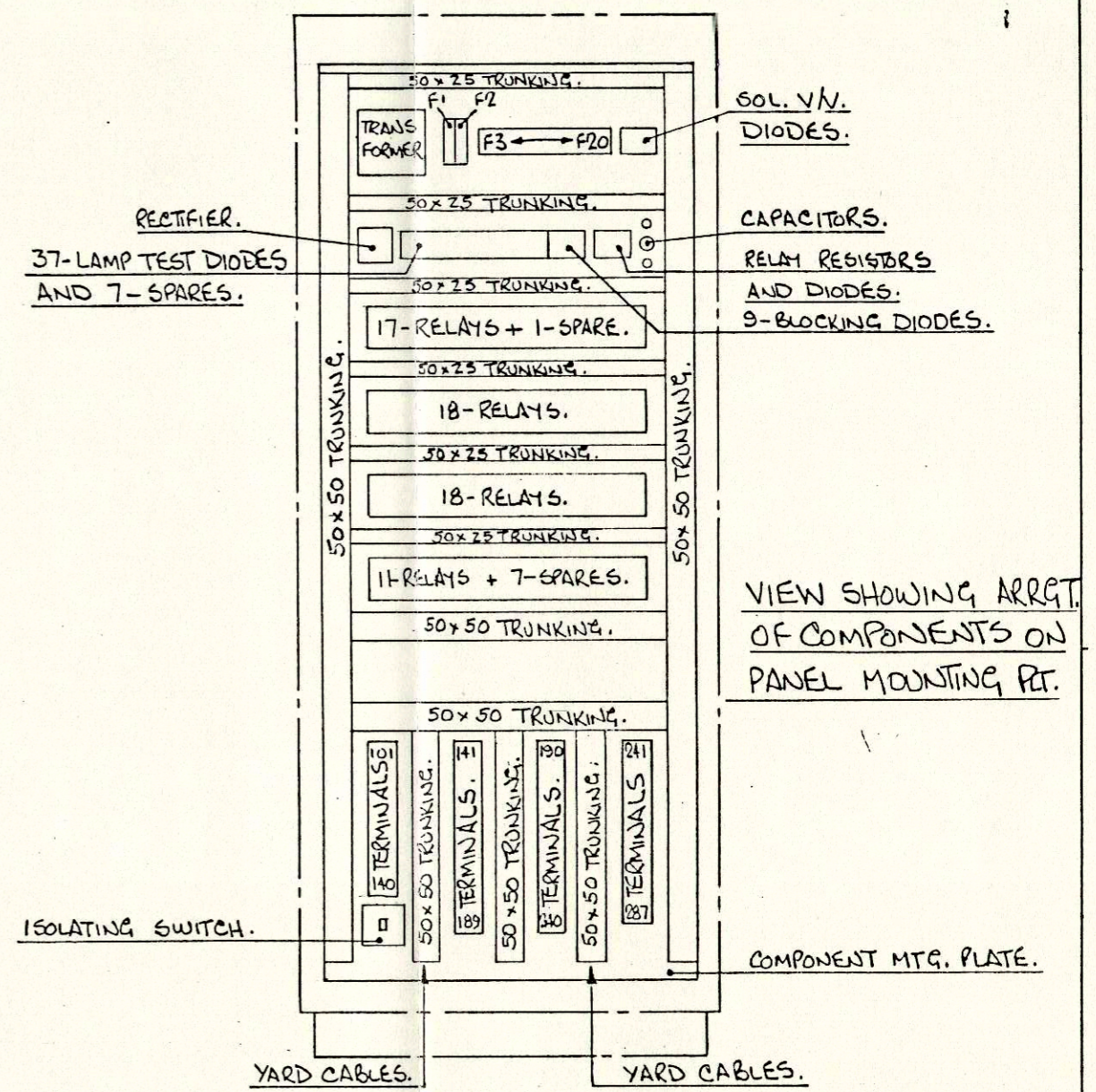
REVISIONS	1 ORIGINAL ISSUE
ISSUE 2	10000µF CAPACITOR ADDED. ALSO 1µF MOVED DOWN
ISSUE 3	LAMP TEST DIODE DETAIL ADDED
J.M.	21.5.87



CUSTOMER REFERENCE HULL 110 1200 W.A.B.S.	YCC REFERENCE 5128 YCC (C85-04-0256)	THIS DRAWING IS THE PROPERTY OF YCC INC. AND IS CONFIDENTIAL AND IS NOT TO BE COPIED OR DISCLOSED TO THIRD PARTIES WITHOUT THE CONSENT OF THE PROPRIETORS.
DRAWING TITLE: SCHEMATIC WIRING DIAGRAM — POWER SUPPLY IN MAIN CONTROL/ RELAY PANEL.		SCALE:
YOUNG & CUNNINGHAM CANADA INC. ST. CATHRINES, ONTARIO.	DRAWN GLR 20/7/86	DRAWING No. V15494/3/A2
	TRACED JM 8/4/86	
	CHECKED	



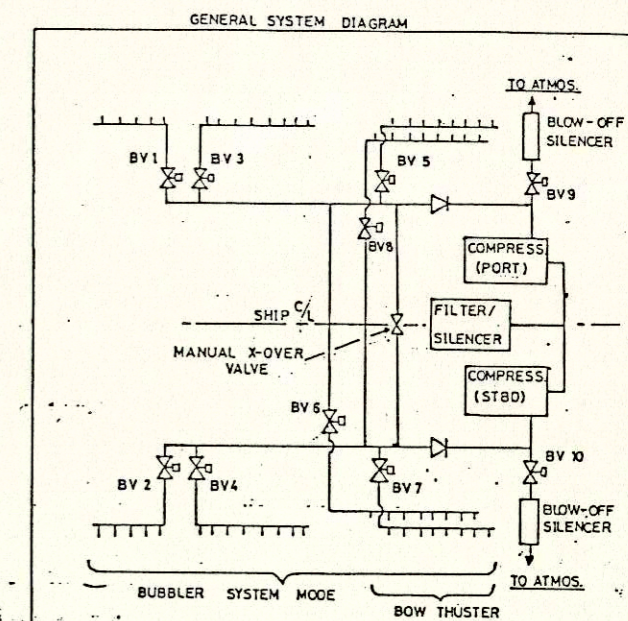
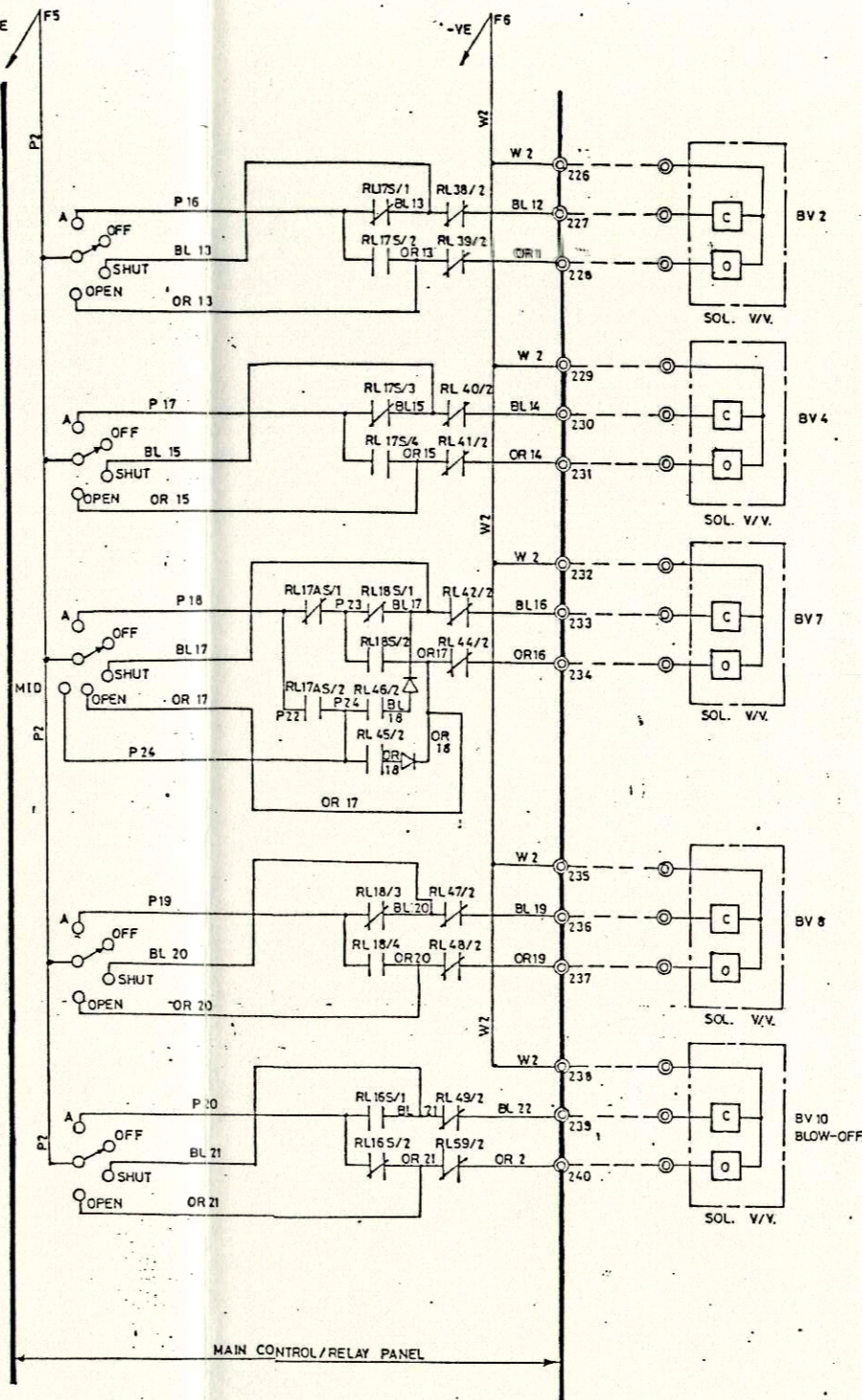
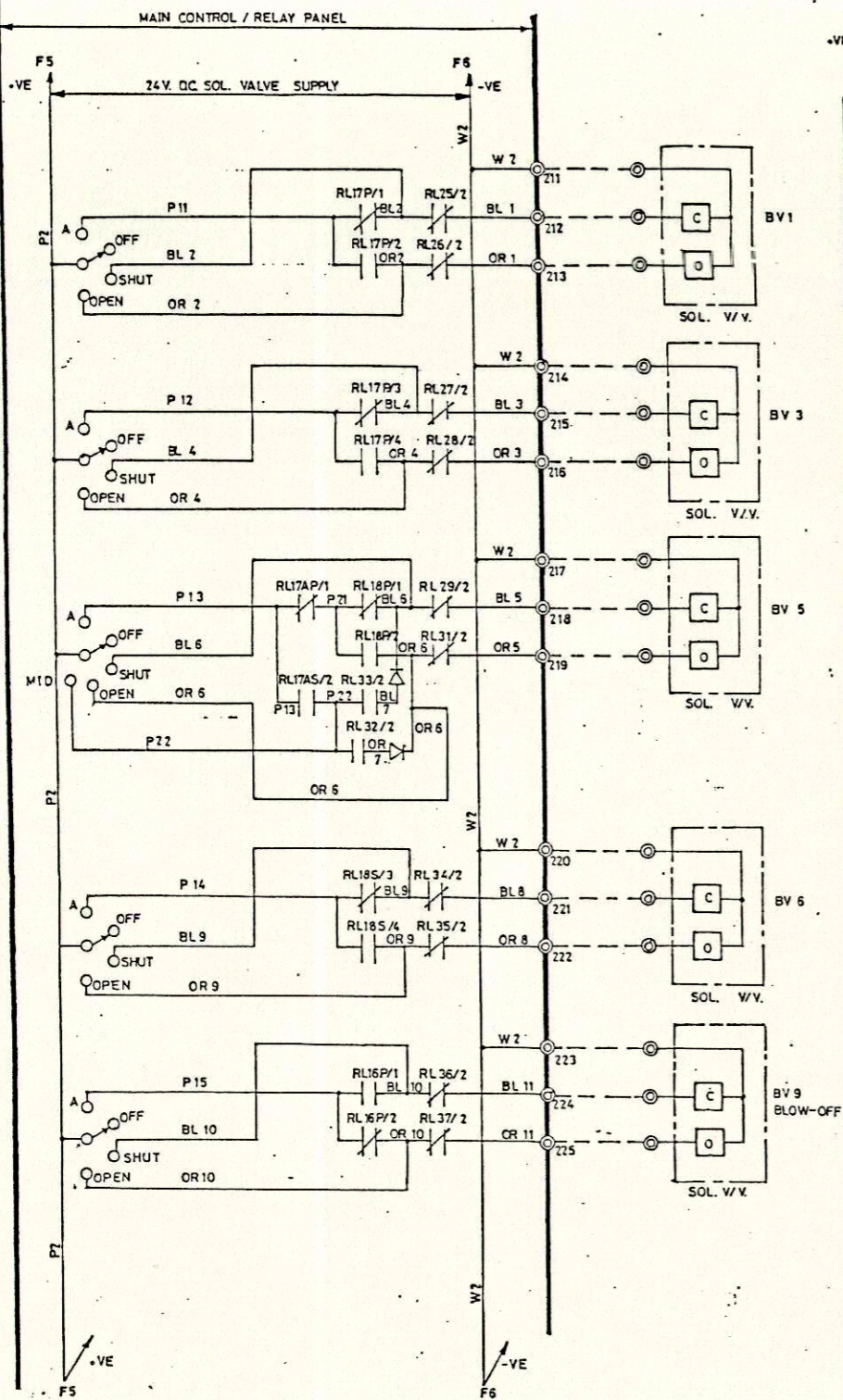
CABLE ENTRY THROUGH BOTTOM OF PANEL.



VIEW SHOWING ARRG. OF COMPONENTS ON PANEL MOUNTING PT.

REVISIONS 1 ORIGINAL ISSUE	CUSTOMER REFERENCE BURRARD-YARON CORP. 1200-NAVAIDS.		YCC REFERENCE 5128 YCC/- -/C85-04-0256.		THIS DRAWING IS THE PROPERTY OF YCC INC. AND IS CONFIDENTIAL AND IS NOT TO BE COPIED OR DISCLOSED TO THIRD PARTIES WITHOUT THE CONSENT OF THE PROPRIETORS.  SCALE: N.T.S.
	DRAWING TITLE: GEN. ARRG. OF AIR BUBBLER SYSTEM CONTROL PANEL.				
	YOUNG & CUNNINGHAM CANADA INC. ST. CATHRINES, ONTARIO.		BY G.L.R. A.1.85	DATE 1/1/85	
	DRAWING No. V15504/1/A2				





REVISIONS  
1 ORIGINAL ISSUE  
ISSUE 5: WIRING  
CODE ADDED  
J.M. 20386



CUSTOMER REFERENCE HULL 110 1200 W.A.S.	YCC REFERENCE 5128 YCC (C85-04-0256)	THIS DRAWING IS THE PROPERTY OF YCC INC. AND IS CONFIDENTIAL AND IS NOT TO BE COPIED OR DISCLOSED TO THIRD PARTIES WITHOUT THE CONSENT OF THE PROPRIETORS.		
DRAWING TITLE:  SCHEMATIC NO. 1 VALVE CONTROL & INTERLOCK		SCALE:		
YOUNG & CUNNINGHAM CANADA INC.  ST. CATHRINES, ONTARIO.		BY	DATE	DRAWING No.  V 15339 / 5 / A1
	DRAWN	GLR	4/8/85	
	TRACED			
	CHECKED			

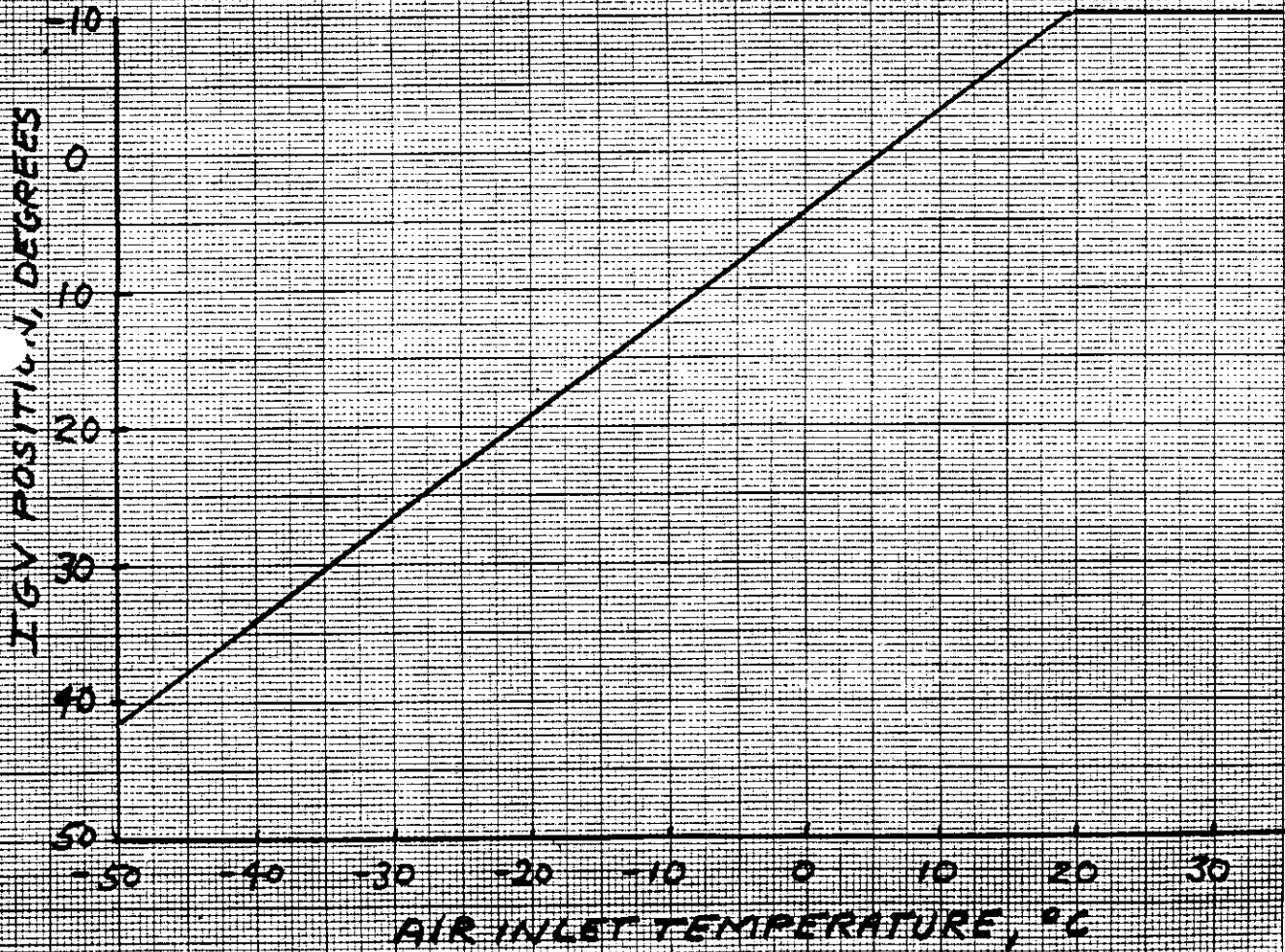
JOB NO. 90615

C7/194

INLET TEMPERATURE TRANSMITTER SETTINGS (FOLLOWING WORKS TEST)

INLET TEMP °C	SIGNAL		MAX IGV POSITION, DEGREES
	VOLTS	%	
18.93	5	100	-10
0	4.31	84.3	4.13
-20	3.71	67.7	19.07
-40	3.04	51.1	34.00
-101.58	1	0	(80)

MAX IGV = -10° (MECH STOP)  
MIN " = 75° ( " " )

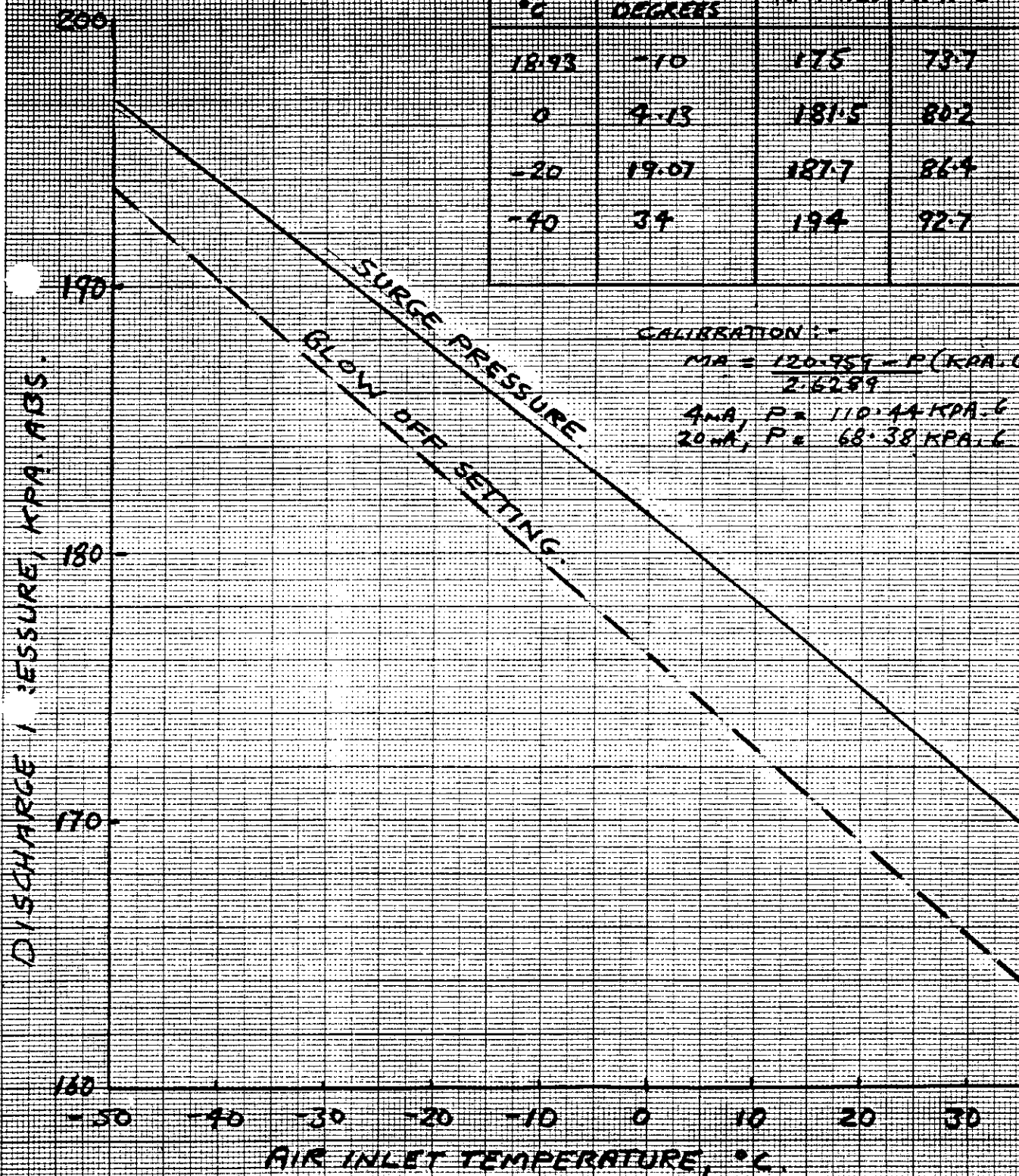


JOB No. 90615

C7/195

PRESSURE TRANSMITTER CALIBRATION - SURGE  
PROTECTION (FOLLOWING WORKS TEST)

INLET TEMP °C	MAX TGV POSITION DEGREES	SURGE PRESS	
		KPA-ABS	KPA-G
18.93	-10	175	73.7
0	4.13	181.5	80.2
-20	19.01	187.7	86.4
-40	34	194	92.7



TC7/196

TEST PERFORMANCE OF COMPRESSOR No. 9006CH-101

RESULTS CORRECTED TO:  
 BAROMETER = 1.013 BAR ABS.  
 INLET PRESSURE = 1.010 BAR ABS.  
 INLET TEMPERATURE = 0°C  
 MOTOR SPEED = 1780 RPM

