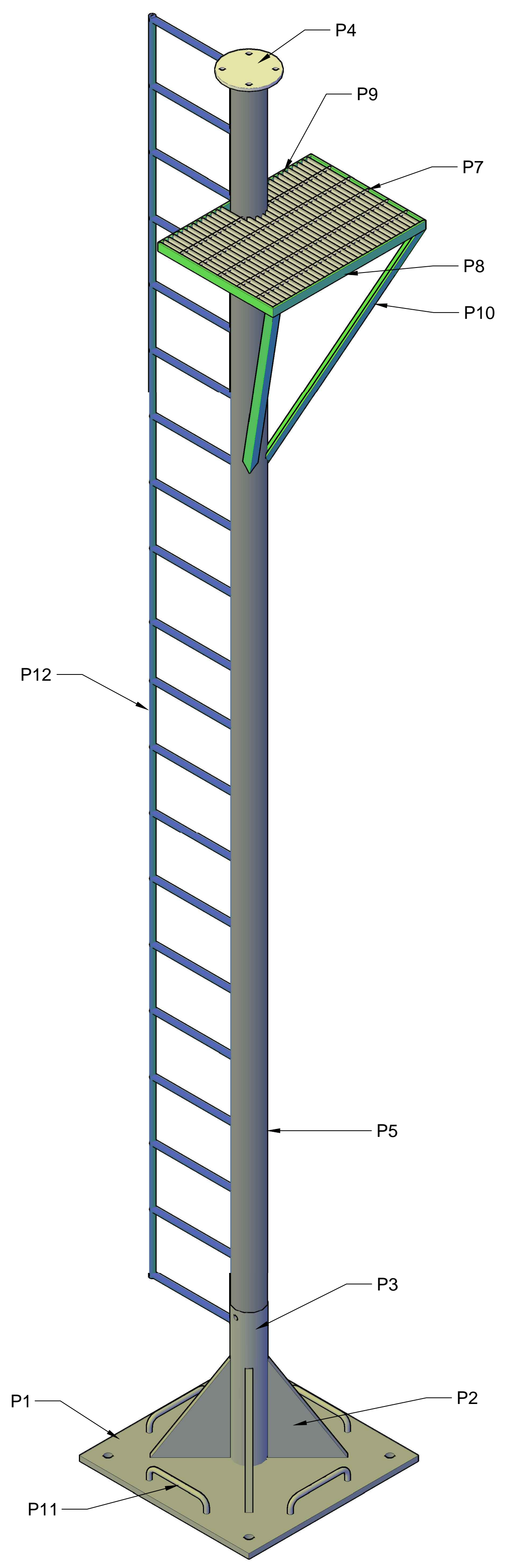
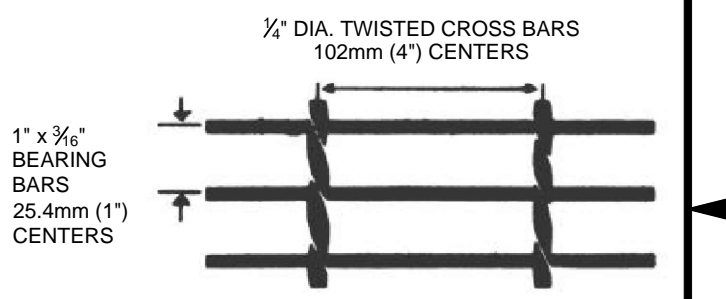
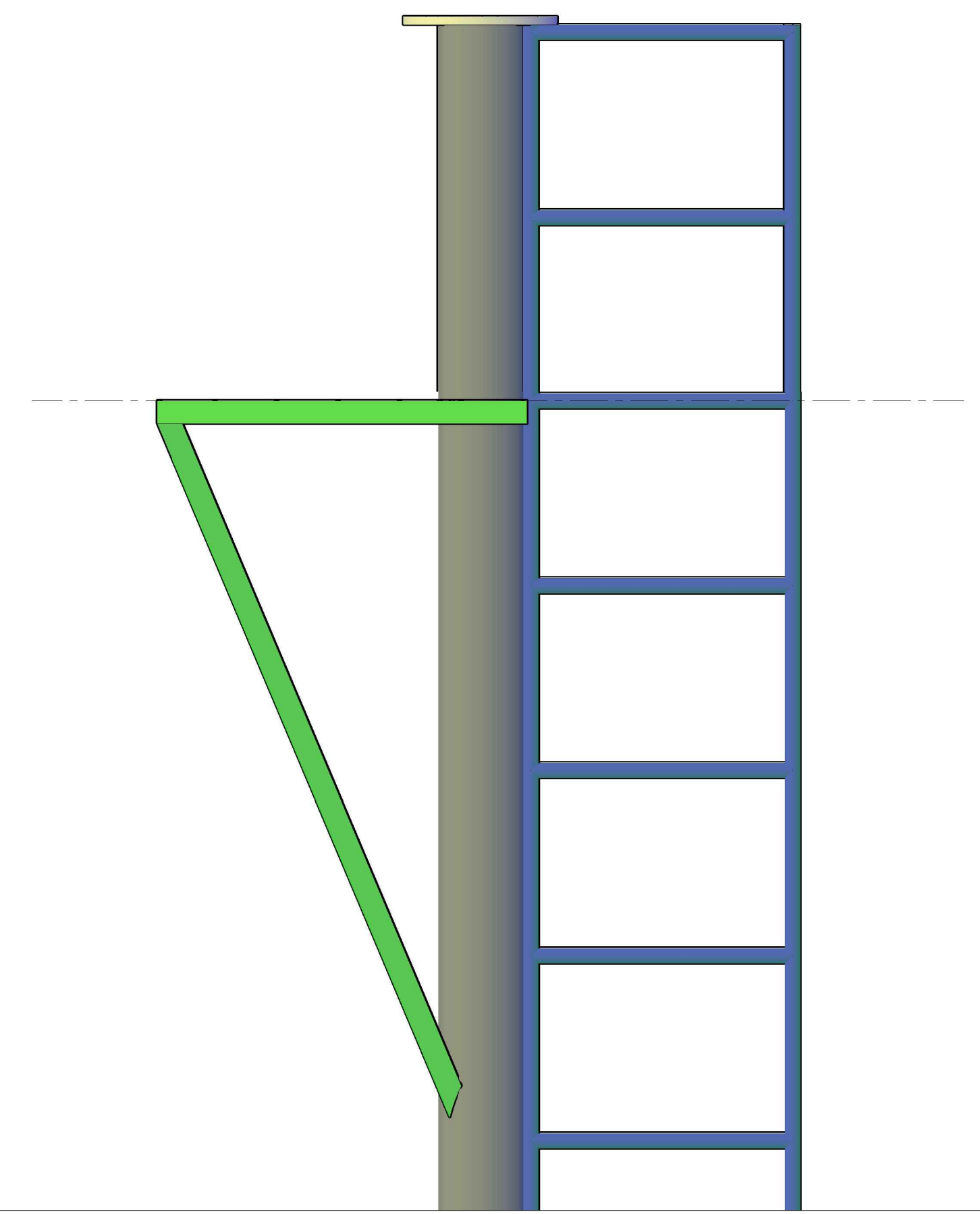


GENERAL NOTES

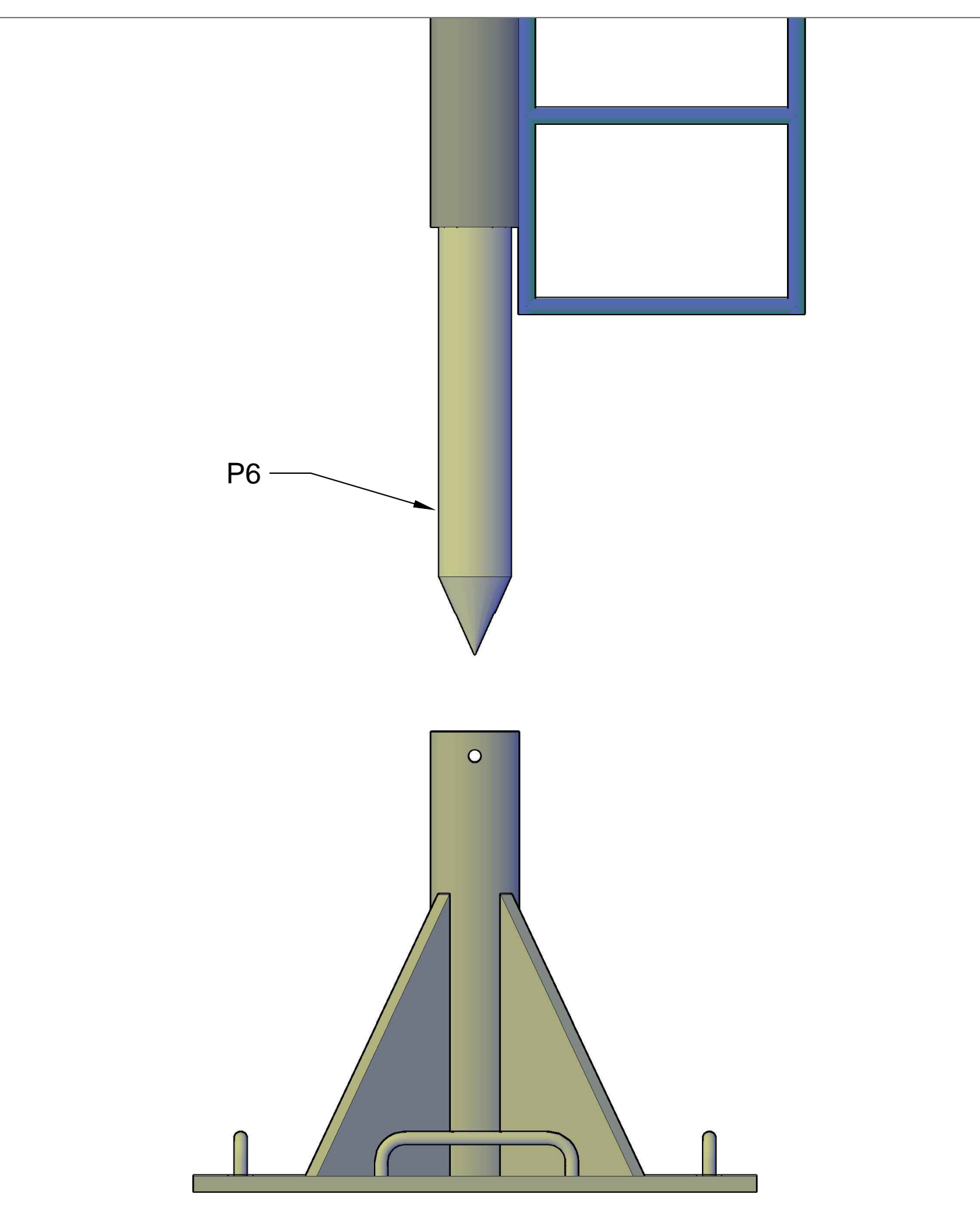
1. ALL MEASUREMENTS IN MILLIMETERS.
2. ALL MATERIAL TO BE AISI 316 STAINLESS STEEL.
3. ALL PIPE TO BE SCHEDULE 80 STAINLESS STEEL.
4. OPEN STAINLESS STEEL GRATING.
5. ALL WELDING TO BE MINIMUM  $\frac{3}{8}$ " FILLET WELDS CONTINUOUS AND ALL AROUND UNLESS OTHERWISE SPECIFIED.
6. 4" PIPE (P6) TO BE INSERTED AND FULLY WELDED TO 5" PIPE (P5).
7. LADDER TO BE STITCH WELDED TO PIPE ON BOTH SIDES WITH 203.2MM LONG WELDS CENTERED AT EVERY RUNG LEVEL. WELD USING A METHOD TO PREVENT PIPE WARPING.
8. BASE AND PIPE ASSEMBLY ARE TO BE LEFT AS TWO SEPARATE ITEMS AND JOINED ON SITE BY OTHERS.



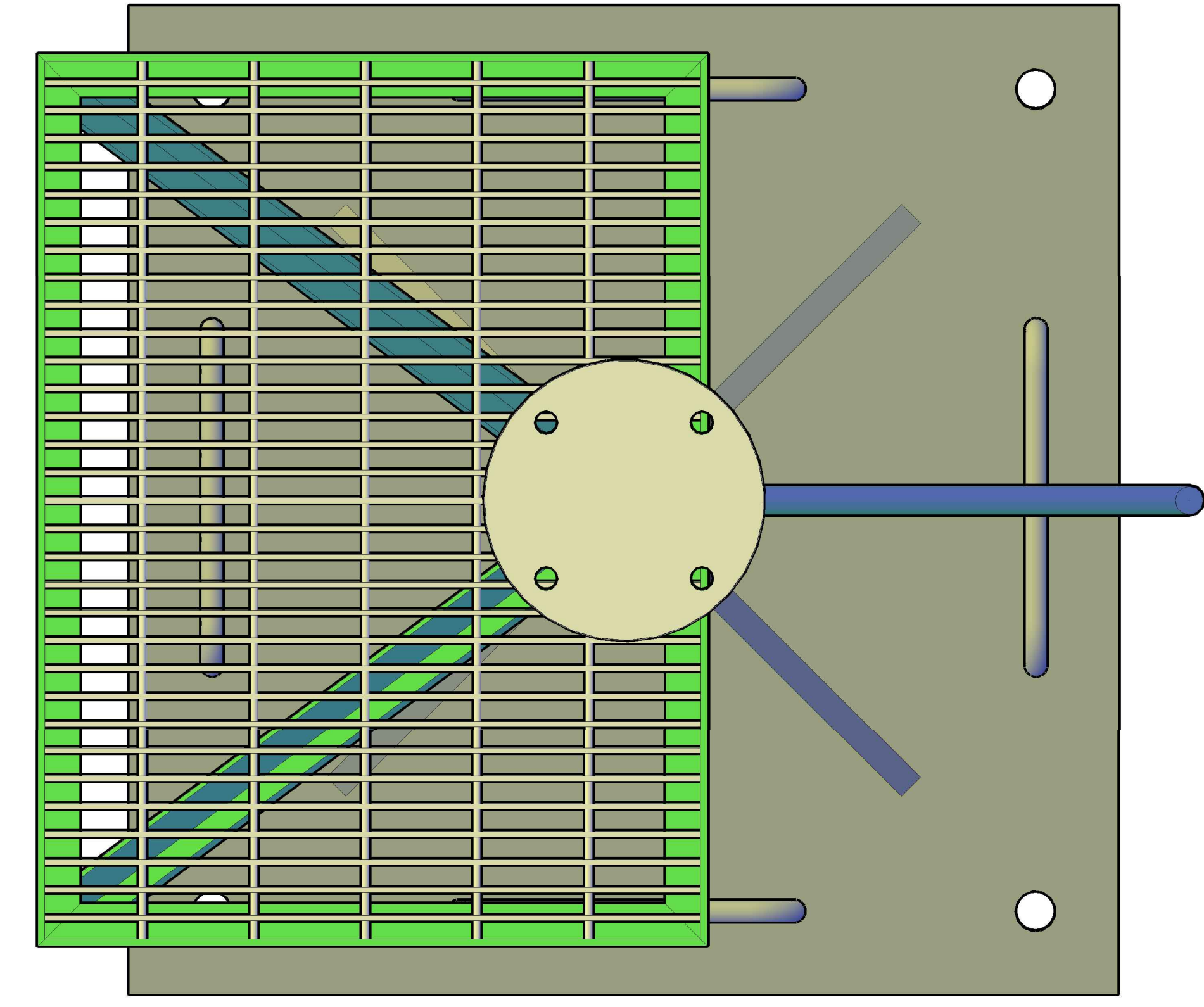
FRONT LEFT ISOMETRIC



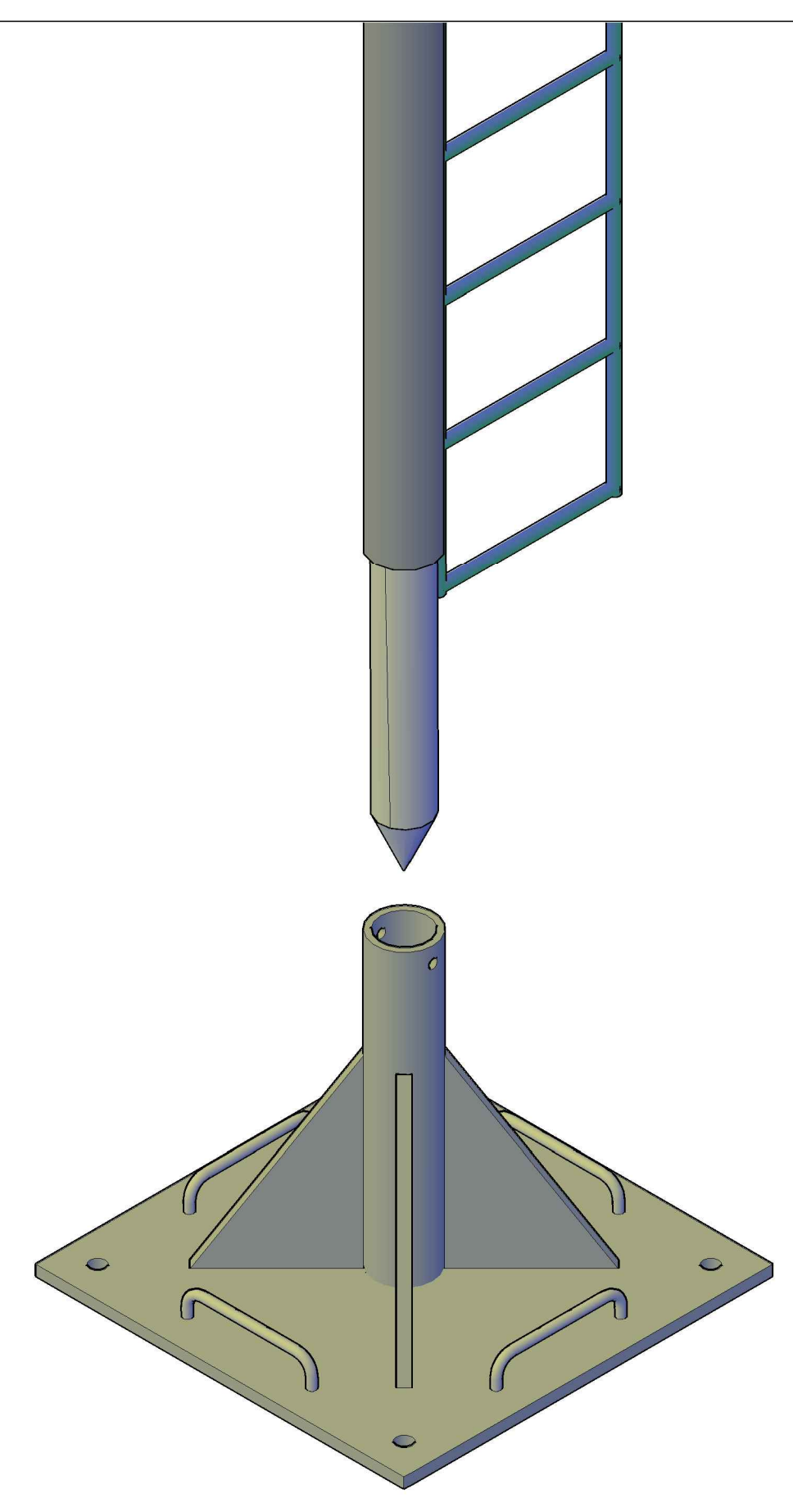
RIGHT VIEW PLATFORM



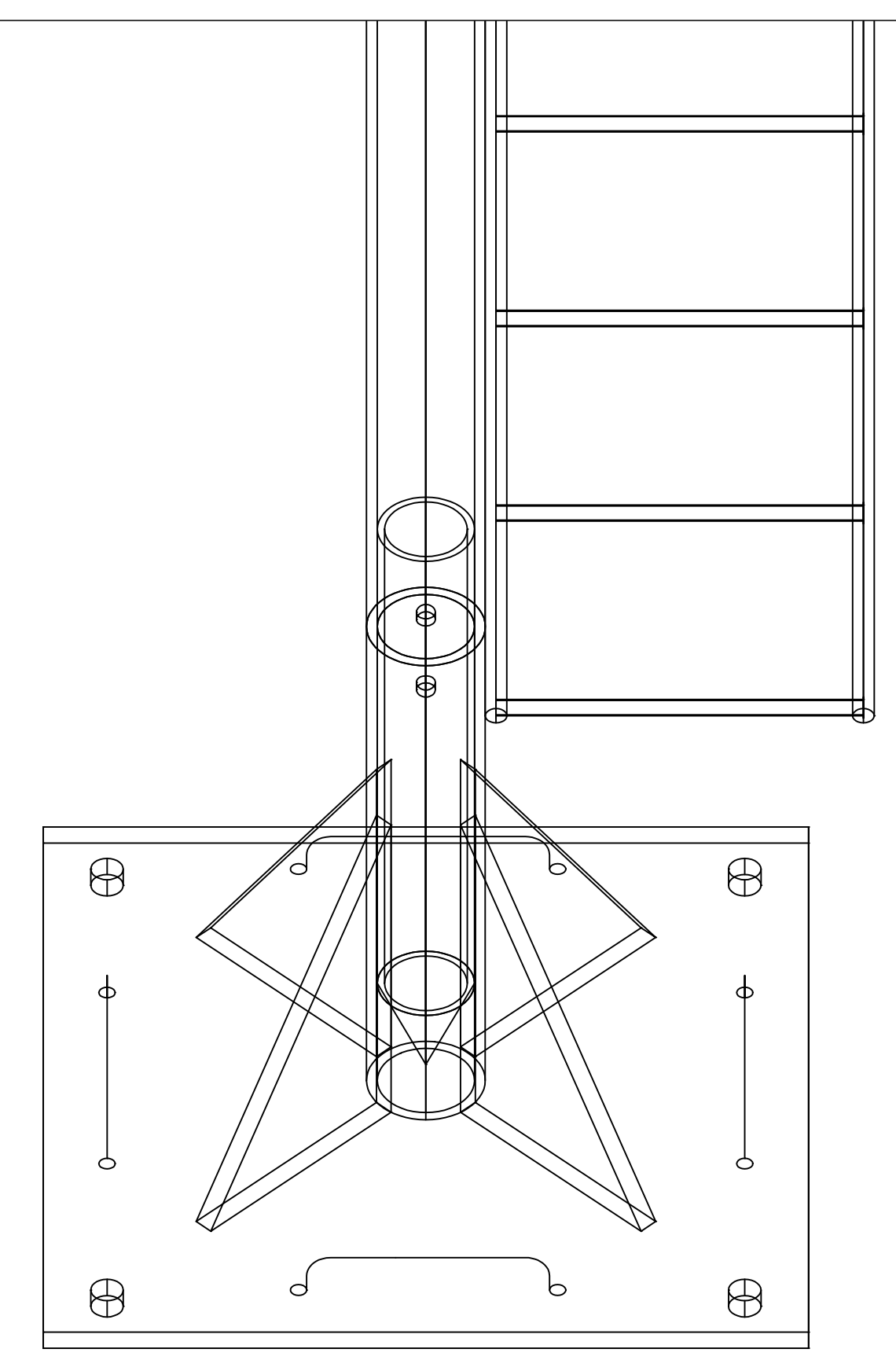
RIGHT VIEW BASE



TOP VIEW



RIGHT ISOMETRIC



RIGHT VIEW

0	DESCRIPTION	BY	yyyy-mm-dd
rev	description	par	date
Asset - Actif			
<b>MCI ENGINEERING</b>			
<b>CCG ATLANTIC</b>			
<b>STAINLESS STEEL SPINDLE</b>			
Drawing - Dessin			
<b>CONCEPTUAL DRAWING</b>			
designed - conception			date
B. BELL			2017_09_28
drawn - dessiné			date
B. BELL			2017_09_28
checked - vérifié			date
M. COOK		YYYY.MM.DD	
approved - approuvé			date
M. COOK		YYYY.MM.DD	
CCG ref. no. - no. réf. GCC			scale - échelle
			VARIES
drawing no. - no. dessin			sheet-feuille
DWG NO - NO DESS		02/02	rev-rév
		0	

DWG NO - NO DESS

Arch D File / Fichier: STAINLESS SPINDLE DWG-2017\_09\_27.DWG - Printer / Imprimé: 2017/09/28 12:43