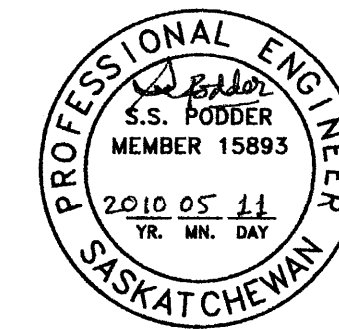


AECOM

This drawing has been prepared for the use of AECOM's client and may not be used, reproduced or relied upon by third parties, except as agreed by AECOM and its client, as required by law or for use by governmental reviewing agencies. AECOM accepts no responsibility, and denies any liability whatsoever, to any party that modifies this drawing without AECOM's express written consent.

ASSOCIATION OF PROFESSIONAL ENGINEERS
& GEOSCIENTISTS OF SASKATCHEWAN
CERTIFICATE OF AUTHORIZATION
AECOM Canada Ltd.
NUMBER C1667
PERMISSION TO CONSULT HELD BY:
DISCIPLINE SASK. REG. NO. SIGNATURE
ELECTRICAL 15893



revision	description	date
1	ISSUED FOR CONSTRUCTION	10/05/12
0	ISSUED FOR TENDER	10/02/18
B	ISSUED FOR 90% REVIEW	10/01/11
A	ISSUED FOR 65% REVIEW	08/12/11

Client

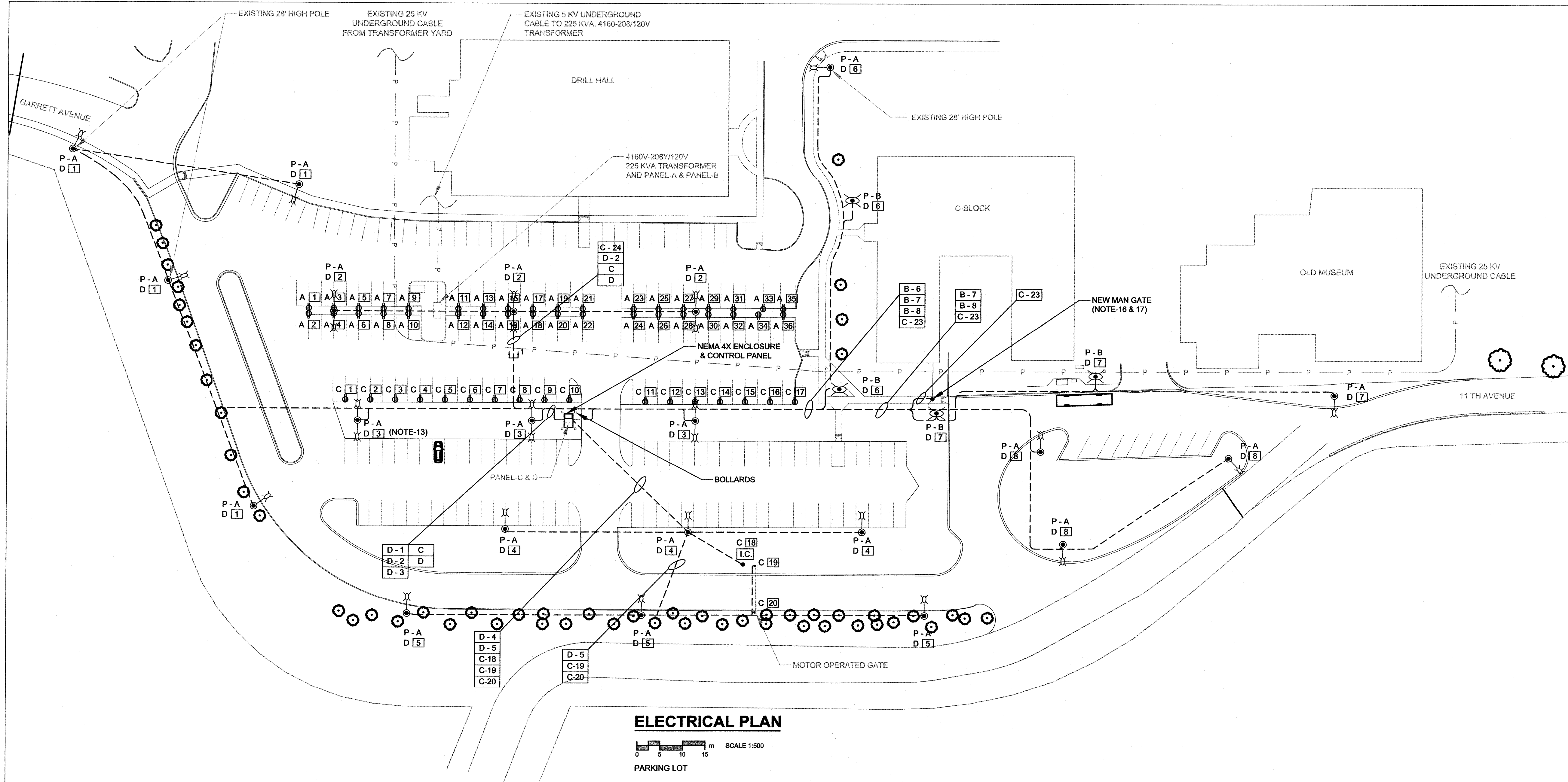
project title
**RCMP
DRILL HALL
PARKING LOT IMPROVEMENTS**

approved by
DD
designed by
SP
drawn by
SP
PWGSC Project Manager
LO
PWGSC, Architectural and Engineering Resources Manager
WAW

Client
RCMP

drawing title
**PARKING LOT
ELECTRICAL PLAN LAYOUT**

project no.	sheet	revision no.
60119309	E2 OF 3	1



ELECTRICAL PLAN

0 5 10 15 m SCALE 1:500
PARKING LOT

LEGEND:

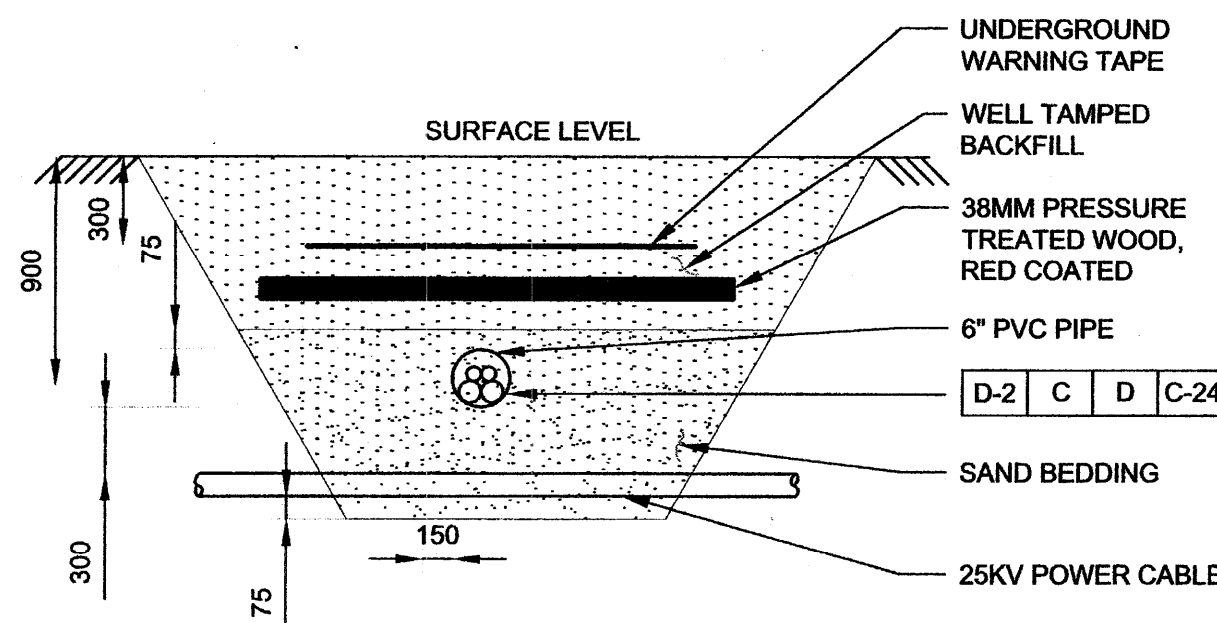
- A 1 PANEL - A, CIRCUIT NUMBER 1
- P - A LIGHTING FIXTURE TYPE P - A
- P - B LIGHTING FIXTURE TYPE P - B
- 8534 mm LIGHTING POLE WITH SINGLE ARM AND AMERICAN ELECTRIC ROADWAY SERIES 115, FIXTURE CAT NO. 115 15 S R-HPF 120 R3 DG CS
- 8534 mm LIGHTING POLE WITH DOUBLE ARMS AND AMERICAN ELECTRIC ROADWAY SERIES 115, TWO FIXTURES CAT NO. 115 15 S R-HPF 120 R3 DG CS
- CHICAGO SERIES 16" DIAMETER BASE CAST ALUMINUM POST WITH ANTIQUE STREET LAMP, AM30 E SERIES, 150S MED, ACT ACRYLIC, TB1 120 VOLT, CLEAR TEXTURED, ANBK BLACK
- I.C. IRRIGATION CONTROLLER

NOTE:

- USE 8' ARM ON 8534mm POLE TO INSTALL P-A TYPE FIXTURES BELONG TO CIRCUIT D-3.
- ALL ELECTRICAL FIXTURES SHALL BE INSTALLED AND GROUNDED IN ACCORDANCE WITH THE LATEST RULES AND REGULATIONS OF THE CANADIAN ELECTRICAL CODE AND APPLICABLE LOCAL CODES. FOR ADDITIONAL ELECTRICAL SPECIFICATIONS, REFER TO SECTION 16010, ELECTRICAL GENERAL PROVISIONS.
- EXTEND EXISTING CONTROL WIRING FROM THE EXISTING OPERATOR PANEL UP TO NEW LOCATION OF MAN GATE, VIDEO CAMERA AND INTERCOM SYSTEM.
- CONTACTOR TO VERIFY THE SIZES OF CONTROL WIRING ON THE BASIS OF CONTROL SCHEMATIC OF MAN GATE, VIDEO CAMERA AND INTERCOM SYSTEM.
- CONTRACTOR SHALL SALVAGE ALL EXISTING POLES AND ARMS. REUSE POLES AND ARMS AS SHOWN ON DRAWING C1. PROVIDE NEW POLES AND ARMS FOR REMAINING LIGHTING FIXTURES.

NOTE:

- DARK LINES DENOTE NEW WORK, LIGHT LINES DENOTE EXISTING INSTALLATION.
- MINIMUM NUMBER AND SIZE OF CONDUCTORS FOR PARKING AREA LIGHTING AND PARKING RECEPTACLES SHALL BE AS PER CABLE SCHEDULE ON DRAWING E1.
- CONTRACTOR SHALL VERIFY ACTUAL SIZE OF CONDUIT WHERE REQUIRED.
- APPROPRIATE DISTANCE SHALL BE MAINTAINED BETWEEN HIGH VOLTAGE AND LOW VOLTAGE CABLES AS PER CANADIAN ELECTRIC CODE.
- LOCATION OF 25KV AND 5KV CABLES HAVE BEEN SHOWN APPROXIMATE ONLY. CONTRACTOR TO COORDINATE WITH SASKPOWER FOR ACTUAL LOCATION OF HIGH VOLTAGE CABLES PRIOR TO EXCAVATION.
- CIRCUIT-C DENOTES 4C, 4/0 AWG TECK CABLE CONNECTING FROM 200AT BREAKER AT MDB TO 200AT BREAKER BELONGS TO PANEL-C.
- CIRCUIT-D DENOTES 4C, 2/0 AWG TECK CABLE CONNECTING FROM 200AT BREAKER AT MDB TO 100AT BREAKER BELONGS TO PANEL-D.
- INSTALL NEW ENTRANCE GATE SIGNAL LOOP. COORDINATE INSTALLATION WITH OWNER'S REPRESENTATIVE ON SECURITY CONTROL SYSTEM. SEE SPECIFICATION SECTION 16903.
- REFER TO DRAWING NO. L4 FOR EXACT LOCATION OF IRRIGATION CONTROLLER.
- REUSE SALVAGED 8534 mm LIGHTING POLES, CHICAGO SERIES CAST ALUMINUM POSTS AND ARM WHERE APPLICABLE. NEW POLES AND ARMS SHALL BE SIMILAR AS EXISTING ONES.
- LIGHTING & RECEPTACLE CONTROL PANEL SHALL BE LOCATED INSIDE SAME NEMA 4X ENCLOSURE ALONG WITH PANEL-C, PANEL-D AND OTHER COMPONENTS AS PER SINGLE LINE DIAGRAM.
- RPVC CONDUIT SLEEVE SHALL BE USED FOR THE RISER CABLES AT EACH FOUNDATION AND BOTH ENDS OF CONDUIT SLEEVE MUST BE SEALED AFTER WIRING.
- PIPE OR DUCT SHALL BE USED WHEN CABLE CROSSES ROADS OR PAVED AREAS TO FACILITATE CABLE REPLACEMENT.



SECTION

SCALE: NTS
TRENCHING
ACROSS ROADWAYS & WALKWAYS